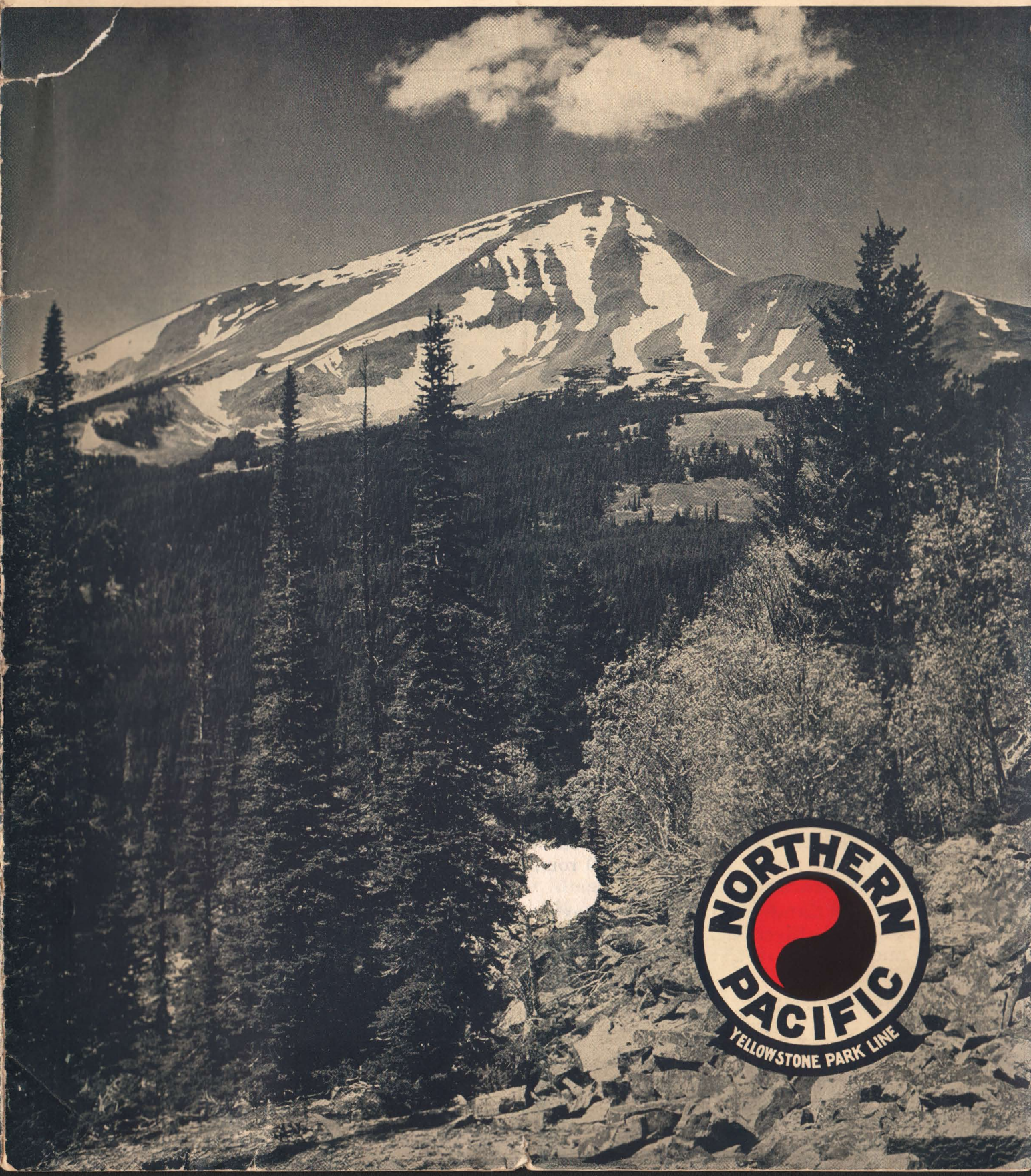


Western Vacations



Western

Special Rates

The Northern Pacific offers extremely low rates for the tours described in this booklet. Our summer tickets are available from May 15th to September 30th; to Pacific Coast and California destinations; Yellowstone Park, June 1st to September 13th, return limit, October 31st. Stop-overs are allowed anywhere en route.

What Things Cost

Detroit Lakes—Delightful hotels and cabins. Some of Minnesota's loveliest lakes. Boating, fishing, bathing. Rates, \$3.50 to \$6.00 per day, American Plan.

Winnipeg—City and Park trip, from \$1.00 to \$2.00, depending on period of time.

"Dude Ranches"—In Montana and Wyoming Rockies. Resorts high in the mountains for rest or outings. Fishing, camping, horseback riding. Rates, \$25.00 to \$75.00 per week.

Yellowstone Park—Standard 4½-day tour, \$54.00 via hotels; \$45.00 via lodges. Meals, lodging, auto sight-seeing.

Helena—Capital of Montana. "Gates of Mountains." A spectacular 15-mile boat trip on Missouri River, \$2.00; auto stage, \$3.00—worth stopping for; Broadwater Natatorium (largest covered plunge in the world). Golf if desired.

Butte—"Richest Hill in the World". Interesting mining city. Side-trip to Anaconda and smelters can be made by bus or suburban train. Rate, \$1.50. Golf.

Glacier Park—Mountains and lakes. Rates for all-expense trips range from \$14.50 for one day to \$79.75 for six days.

Spokane—Visit Davenport Hotel, Hayden Lake resorts (\$5.00 to \$8.00 per day, American Plan); Spokane Falls, orchards, Mt. Spokane, etc. Sight-seeing tours, \$1.00 and \$1.50.

Mount Baker—Bus service from Bellingham twice daily. Leave 9:00 A. M. and 3:00 P. M., arriving Mt. Baker Lodge 12:00 M. and 6:00 P. M. Returning, leave Mt. Baker Lodge 8:00 A. M. and 2:00 P. M., arriving Bellingham 10:45 A. M. and 4:45 P. M. Round trip, \$8.00. Mt. Baker Lodge, \$5.50 to \$10.00, American Plan.

Rainier Park—Auto transportation from Seattle to Paradise Valley, \$15.00 round trip; from Tacoma, \$12.00 round trip. Paradise Inn, \$5.50 to \$10.00 per day, American Plan.

Portland—Columbia Highway trip, \$3.00 to \$6.50; Mt. Hood Loop and Columbia River Highway trip, \$10.00; Portland City trip, \$1.25; Portland Heights and Council Crest, street car, 16 cents.

Tacoma—City and Beach trip, \$1.00; Fort Lewis, \$2.00; Valley of the Mountain, etc., \$2.00.

Northern Pacific Railway

Vacations

Seattle—Puget Sound and docks, parks and lakes. Motor tours, \$1.00 to \$2.00; motor and water, \$3.50.

Vancouver-Victoria—Quaint cities of English flavor. Side-trip may be made from Seattle to Victoria or Vancouver, through picturesque Puget Sound. From St. Paul and points east, free side-trip to these cities may be secured if you will ask ticket agent to add free coupon when making out your ticket. Bus sight-seeing in Victoria and Vancouver.

Lake Louise and Banff—Launch trips up Bow River and Vermilion Lakes, \$1.00; pony trip with guide, full day, \$6.00; to Moraine Lake and Valley of the Ten Peaks, one-way, \$2.50; to Emerald Lake, via Wapta and Yoho Valley, one-way, \$5.00.

Crater Lake—A lake of deep blue water in the mouth of an immense old volcano. Sunset Drive, 10 miles, \$1.00. Launch ride around lake, 15 miles, \$2.00. Round-trip stage fare from Medford or Klamath Falls, \$17.50. Lodge rate, American Plan, \$6.00 up.

San Francisco—Thirty-mile drive, \$2.50; Golden Gate Park, \$1.50; Chinatown, \$1.50; Oakland, Berkeley and Piedmont, \$3.00; Stanford University, \$3.50; La Honda, Ocean Shore, giant redwood trees, Stanford University, \$5.00; Mt. Tamalpais, Muir Woods and Marin County trip, \$6.50; Santa Rosa and Petrified Forest, \$10.50.

Yosemite Park—Yosemite Falls, Bridal Veil Falls, Yosemite Canyon. Transportation, Merced to Yosemite Valley and return, \$10.25. Lodging, \$1.50 to \$5.50, European Plan; \$4.00 to \$4.25, American.

Los Angeles—Pasadena, \$2.00; Los Angeles, Hollywood, Beverly Hills and Beaches, \$2.00 for A. M. Tours and \$2.50 for P. M. Tours; Riverside and Orange Groves, \$6.00; San Diego and Tia Juana, Mexico, \$12.00; Catalina Islands, \$3.10, round trip.

Grand Canyon—An immense canyon a mile deep and ten to thirteen miles wide and two hundred miles long. Side-trip fare from Williams to the Canyon and return, \$9.12; Rim Drive, \$3.00; one-day Bright Angel trip, \$5.00; two-day Hermit Trail trip, \$18.00; Bright Angel Cottages, \$1.50 to \$2.00, European Plan; El Tovar Hotel, \$7.00 to \$9.00 per day, American.

Zion National Park, Bryce Canyon and Cedar Breaks—Two-day tour Zion National Park, \$22.75; one-day tour Cedar Breaks, \$10.25; two-day tour Bryce Canyon and Cedar Breaks, \$27.75.

Salt Lake City—Sight-seeing tours, \$1.00 to \$6.50; five interesting trips to Great Salt Lake, Saltair Beach and Smelters; Bingham Canyon; Mt. Timpanogos Cave and Loop trip. Special organ recital in Tabernacle every week-day noon and Sundays at 2 P. M.

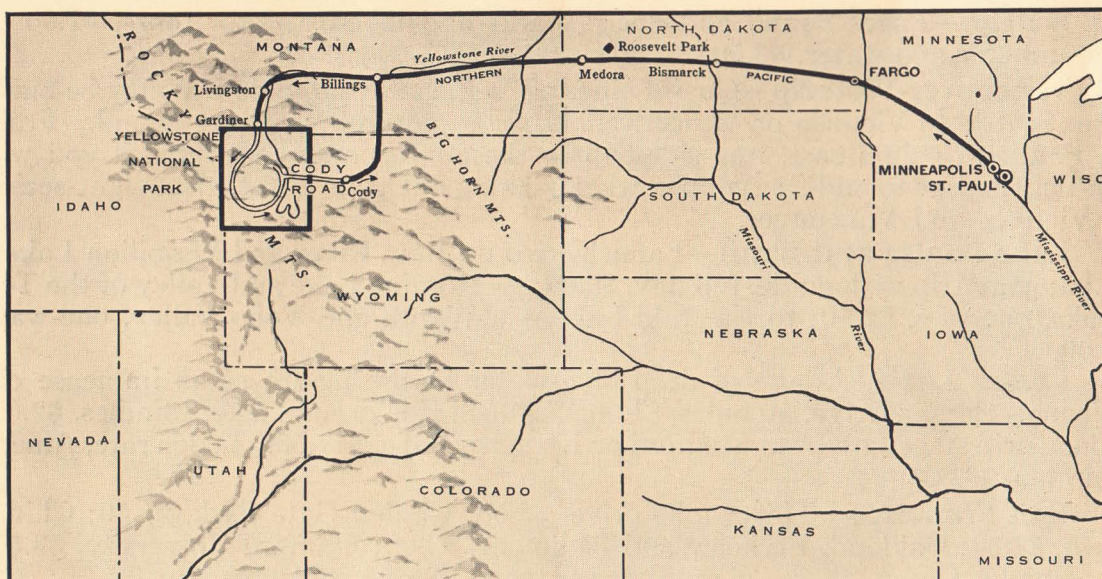
Denver—Sight-seeing trips: Lookout Mountain, \$2.50; Denver's Mountain Parks, \$4.00; Estes, \$10.50; Grand Lake, \$25.50; Georgetown Loop, \$7.00 round trip.

Colorado Springs—Sight-seeing trips: Mt. Manitou Scenic Incline, \$1.00; Pike's Peak, \$5.00 by cog road, \$6.00 by auto; Cheyenne Mountain Circle trip, \$4.50; Big Circle trip, \$10.00.

Northern Pacific Railway

Lakes, Rockies, Yellowstone, Shoshone National Forest

Tour No. 1--\$48.55 Round Trip from St. Paul



A Ten-Day Trip Through Minnesota, North Dakota, Montana and Wyoming

Time—You can make this spectacular sight-seeing trip in ten days or even eight days, if you have but little time to spare.

Stop-overs—Delightful places to stop-over are Detroit Lakes, Minn. (for lake resorts, fishing and boating); "Roosevelt Park" (for Bad Lands trip and Peaceful Valley Ranch); Billings (for "Dude Ranches"); Yellowstone National Park (of course); Cody (for ranches and lodges).

Have Your Ticket Read—St. Paul to Gardiner via the Northern Pacific; out Cody, through Billings, returning Northern Pacific. **Standard Yellowstone Park Tour**, four and one-half days, at the hotels, \$54.00; at the lodges, \$45.00.

Low cost Yellowstone Park vacation tour

Ask about Twin Cities escorted all-expense tours to Yellowstone.

M. R. Johnson, 5th and Jackson Sts.
St. Paul, Minn.
Phone Cedar 2340

For more information, mail this coupon to M. R. Johnson, Northern Pacific Ry., St. Paul, Minn.

What would be total expense of Tour No. 1? (.....)

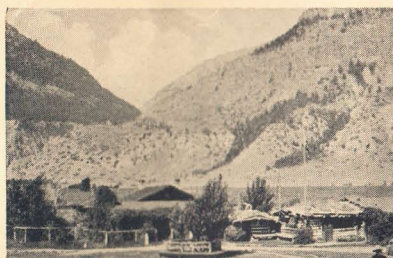
Give me details about stop-overs at

Name

Address

Hotels in the Northern Pacific Country

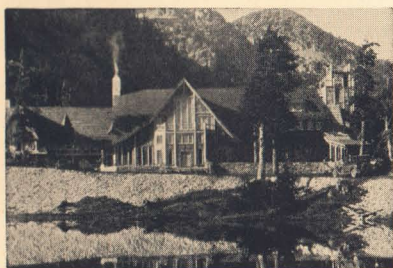
Mountain Resorts



A Typical "Dude" Ranch



Old Faithful Inn
Yellowstone National Park



Mt. Baker Lodge
Mt. Baker National Forest



Paradise Inn
Rainier National Park

THE thousands upon thousands of American vacationists who are turning more and more each summer toward the Pacific Northwest for recreation find there, in addition to much of America's finest mountain sports and scenery, the very best of hotels and accommodations.

Even out in the far mountain regions (in places still so wild that when you go there you will certainly feel you must be "the first white man" to arrive), even there, are cozy ranch homes, hidden away in the hills and valleys, waiting to welcome you, or picturesque mountain chalets, delightful and snug inside!

The assurance of comfort, cleanliness and convenience at the end of the day's fun and exertion—whether it be sight-seeing about the city or scaling a sky-tossed mountain peak—is one of a score of things that you will particularly enjoy about a Pacific Northwest vacation.

By contact with these splendid hotels, fine country homes and their hosts, more than in any other way, perhaps, will you experience that warm hospitality which is so typical of the West.

Some of the City Hotels



Spokane



Portland



Tacoma



Seattle



On the Shore of Reflection Lake—Rainier National Park



Columbia River Highway, World-Famous Scenic Drive



Grand Canyon, Yellowstone National Park