

THE MAIN LODGES ARE CENTERS OF HOSPITALITY



ONDER is the great appeal of Yellowstone Park. It brings hundreds of thousands of travelers from the world over. Wonder geysers, hot water volcanoes, boiling pools, uncanny caverns that hiss and roar, terraces richly colored, knotted trees and petrified woods, a moun-

tain of glass, lakes of green and blue, and innumerable other miracles of Nature crowd a journey through Yellowstone with amazement and overmastering interest.

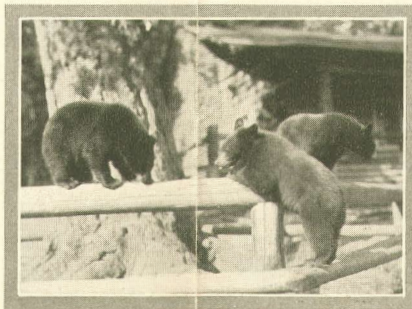
Yet Yellowstone has much more—it is beautiful as well as astonishing. Its dense forests, its lofty mountains, its meadows of flowers, its swift, clear streams with their wonderful cascades and waterfalls are quite enough for the endowment of any park.

Yellowstone Vacations

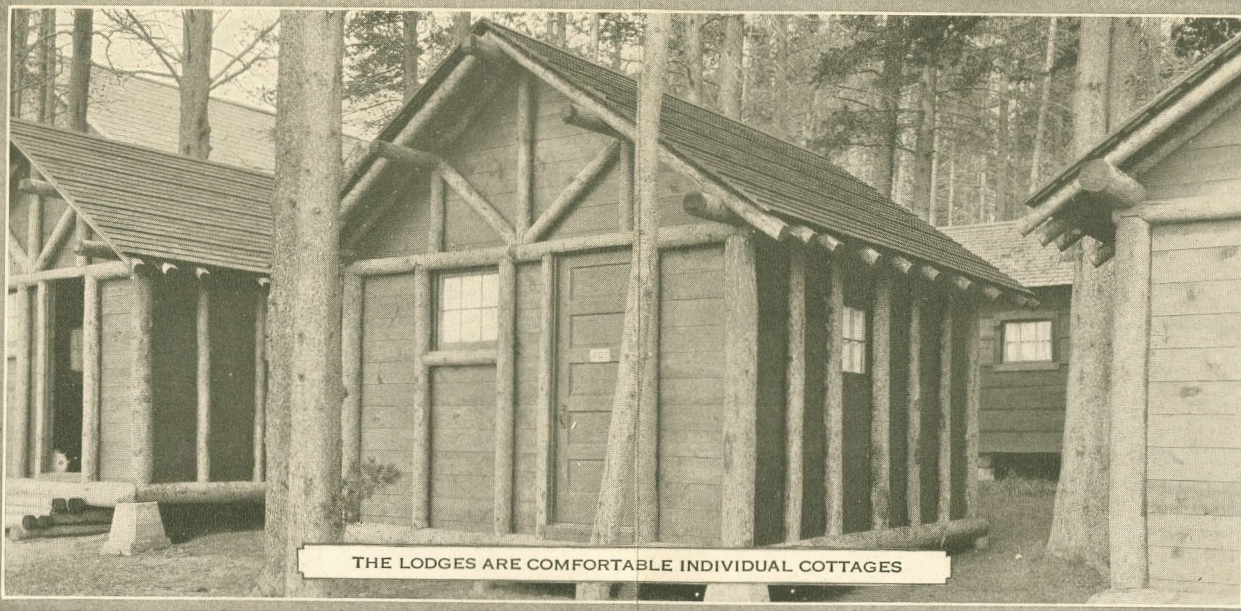
Then there is the climax, the Grand Canyon of the Yellowstone River, that sublime gulf which has baffled pen and brush to describe. Many tourists cross the continent year after year for the inspiration of the Grand Canyon. It is a dazzling and unbelievably beautiful picture.

Yellowstone Lake is another great attraction. It is more than 7,700 feet above sea-level, yet it is 20 miles long and 15 miles wide, cool, clear, deep and filled with fighting trout.

Animals and birds—what a paradise for them! Elk, deer, antelope, buffalo, moose, beaver, big-horn sheep, bear roam at will. There are scores of species of birds. They have been zealously protected for years. Today, unafraid and curious, Yellowstone animals are as interested in visitors as the visitors are in them.



Any Railroad Agent Can Tell You About Yellowstone National Park, or Address
Yellowstone Park Lodge and Camps Co., Yellowstone Park, Wyo.



THE LODGES ARE COMFORTABLE INDIVIDUAL COTTAGES

Yellowstone Park Lodges

PICTURES in this booklet show some of the typical lodge buildings. The Yellowstone Park Lodge and Camps Company has the largest lodge resort system in the world. Its buildings, both large and small, are of solid, permanent construction and most of them are new. Yellowstone's popularity has been increasing so rapidly that large crews of builders have been steadily employed during the last six years erecting new structures to accommodate the public. More than a million dollars has been expended for improvements and new buildings in the Yellowstone lodges since the war.

Mammoth Hot Springs—Facing the Springs and with verandas affording an unsurpassed view of the gorgeously colored Terrace Mountain.

Old Faithful—In the Upper Geyser Basin, within a few rods of Old Faithful, the Giant, the Giantess, Grotto and a dozen other famous geysers.

Yellowstone Lake—On the beautiful lake shore, with lodges among the woods.

Grand Canyon—Close to the Great Fall, amid the pines and within a few steps of the canyon's edge.

Roosevelt Lodge—On the Tower Falls road; a splendid place to go for extra stop-overs for saddle-horse trips to fish, rest and see beaver, bear, buffalo, deer, elk and other park animals.

Sylvan Pass Lodge—The fine new lodge on the Cody road, located amid some of the most spectacular mountain scenery in America.

Standard Park Tours \$45

The National Park Service of the United States arranges the Tours in Yellowstone Park and fixes the charges *low*. The standard four-and-half-day lodge tours entering and leaving by various gateways cost only **\$45**, including meals, lodging and auto transportation.

\$22.50 for children under 8

\$32.50 for children 8 to 12

Passengers traveling via Gallatin, Lander or Bozeman, to secure \$45 rate, must hold "long haul" rail tickets. (See page 11.)

If traveling via Lander cost of meals and lodging between Lander and Park is added.

For extra days you wish to spend at the lodges, add \$4.50. Children under 8, half rates.

Yellowstone Park Lodge and Camps Company



READY FOR GUESTS—A LODGE INTERIOR



SYLVAN PASS LODGE



CANYON LODGE FIRE
ENTERTAINMENT



SIGHTSEEING CARS SERVING
OUR GUESTS



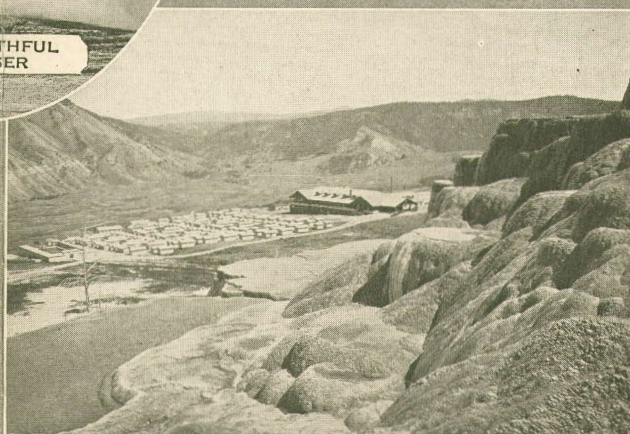
OLD FAITHFUL
GEYSER



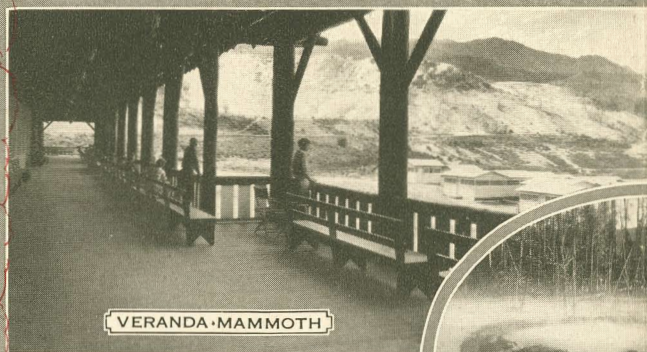
FEEDING THE WOODCHUCKS
OLD FAITHFUL LODGE



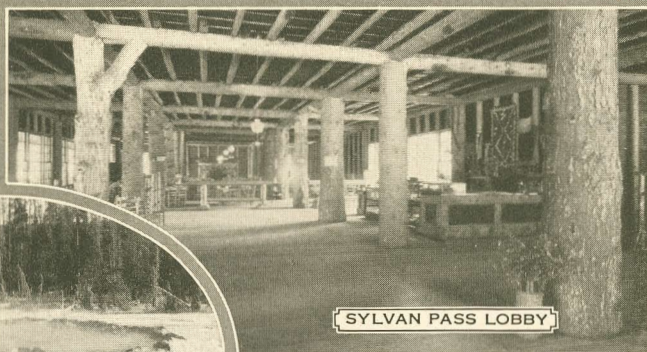
TWO YOUNG DEER



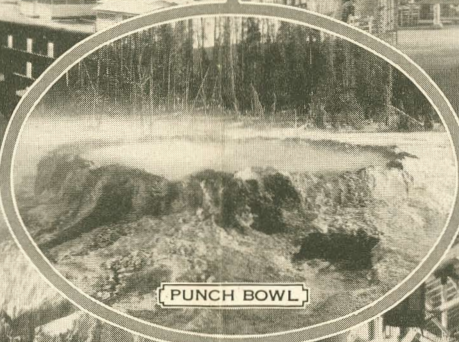
MAMMOTH LODGES FROM TERRACE



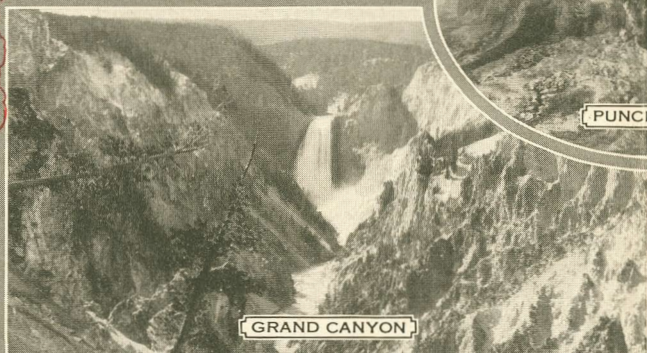
VERANDA - MAMMOTH



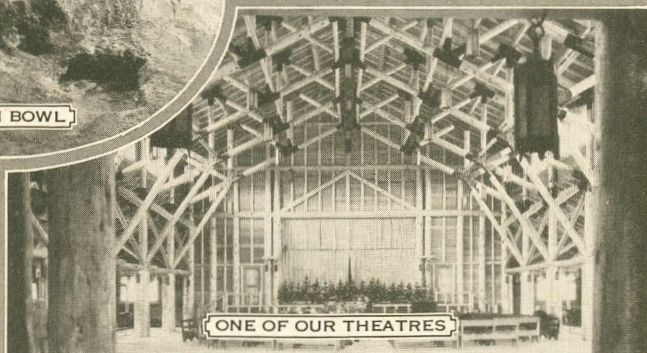
SYLVAN PASS LOBBY



PUNCH BOWL



GRAND CANYON



ONE OF OUR THEATRES



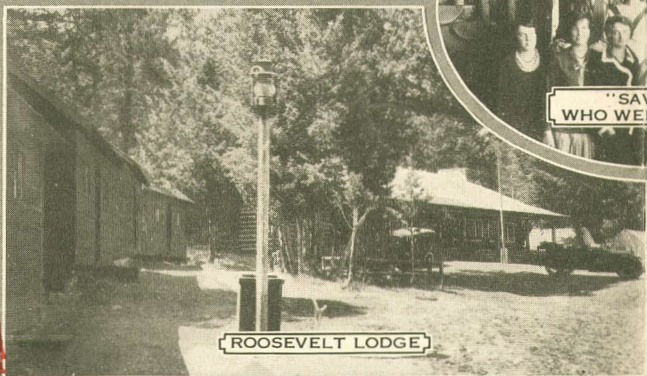
INTERIOR, OLD FAITHFUL LODGE



AT OLD FAITHFUL



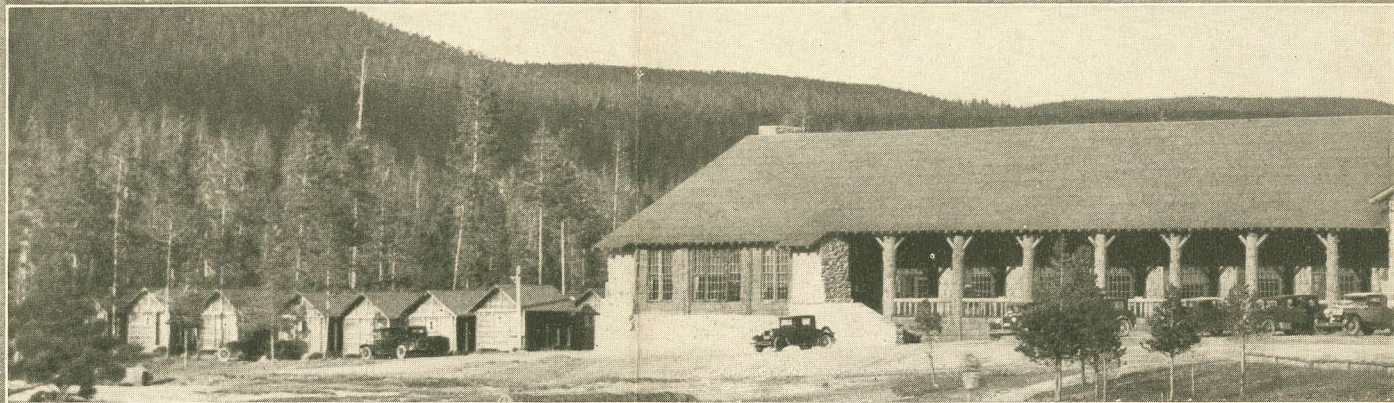
"SAVAGES"
WHO WELCOME YOU



ROOSEVELT LODGE



"ALL ABOARD!"



Information

YELLOWSTONE TICKETS can be purchased at almost any railroad ticket office in the United States. When you buy your railroad ticket, ask for a Yellowstone coupon "The Lodge Way." The standard four-and-one-half-day tour within the Park costs \$45, meals, lodging and automobile trips included.

RAILROADS serving the Park gateways are Northern Pacific, Gardiner; Union Pacific, West Yellowstone; Burlington Route, Cody; Chicago and Northwestern, Lander; C. M. & St. P., Gallatin; Northern Pacific, Bozeman. Pullman reservations for outgoing trains can be made at any camp.

PLANNED TOURS—If you have not visited Yellowstone, it is difficult to visualize its geography, road system and utilities for the accommodation of the thousands of visitors who come. Do not let this concern you. Simply select your rail route to any of the gateways to Yellowstone, and, on arrival, place yourself in the hands of the Lodge Company. Everything is prearranged. You have nothing to do but enjoy your vacation trip. Automobiles receive and deliver our guests at all rail stations serving the Park.

AUTOMOBILE tourists desiring accommodations at the lodges should purchase their tickets "The Lodge Way," as they enter the Park, in order to be sure of reservations. Meal and lodging tickets are sold at the rate of \$4.50 per day, American Plan; half of this rate for children under eight. Accommodations can be arranged at individual camps at the same rates.

CHARGES for standard park tours, under the \$45 rate, are divided as follows:

Automobile transportation for complete tour.....\$25.00

(For exceptions, see bottom of page 11)

Meals and lodgings, American Plan, for standard "four-and-one-half-day tour"..... 20.00

Division of American Plan per diem rate: Breakfast, \$1.00; Lunch, \$1.00; Dinner,

\$1.00; Lodging, \$1.50.

Children under 8, half of above rates.

The Lodge and Camps Company also operates Housekeeping Camps and Cafeterias in the principal public automobile camps. Accommodations for this service can be arranged at the individual camps.

HAND BAGGAGE to the limit of twenty-five pounds will be carried through the Park on automobiles without charge. Baggage may be checked at the Park gateways. Passengers entering the Park by one rail gateway and leaving by another rail gateway will find certain regulations for free checking of baggage to rail station from which they leave the Park. Interested railroads will waive storage charges on baggage under checking, at Livingston, Gardiner, West Yellowstone, Pocatello, Ogden, Salt Lake City, Cody, Frannie, Billings, Butte, Bozeman, Three Forks and Gallatin Gateway, for time consumed by passengers in making the Yellowstone tour.

WOMEN GUESTS—Hundreds of women annually make the "Lodge" tour singly, and in parties of two or more, without male escort. Do not hesitate to make this tour alone. The homelike nature of our lodges and camps and the women in charge, make it doubly advantageous for women to select our service.

HOSTESSES at each lodge look after the comfort and convenience of women guests.

LODGE SHOPS—We operate shops at each lodge for the sale of Haynes' Guide Book, pictures, cigars, soda fountain refreshments, sundry drug supplies, candies, newspapers, Yellowstone souvenirs, etc.



Stop-overs Re

IF you have time be sure to s
than the 4½ days of the
is a great wonderland and
can possibly arrange to s
more, at each Lodge, become th
marvels of Mammoth Hot Spring
beauties and restfulness of Yellow
of Grand Canyon build a greater
into your life. Rest or climb m
Sylvan Pass.

Unlimited stop-overs are allow
tion Company tickets. Addition
\$4.50 per day.

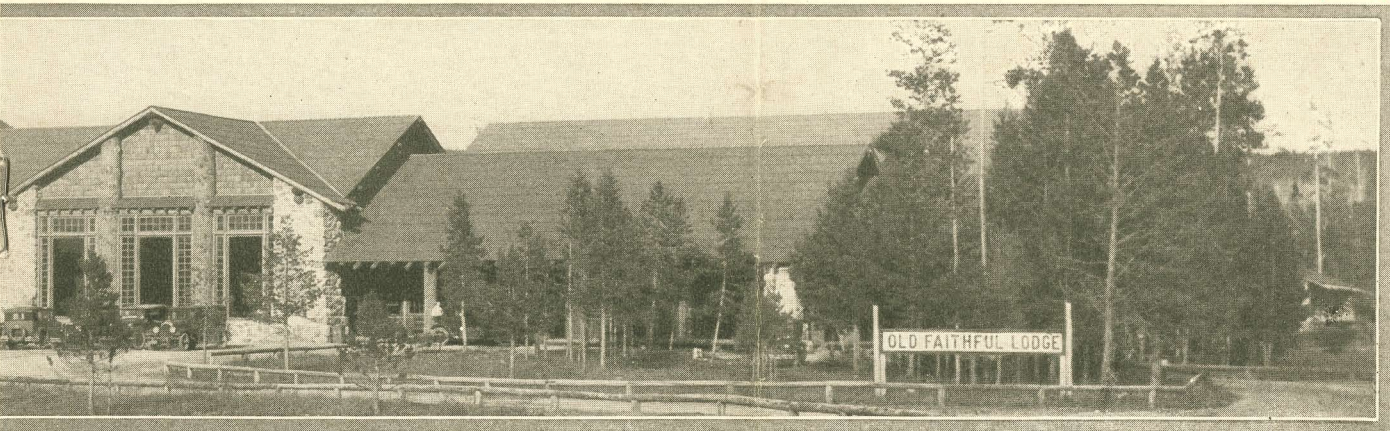
**YOU CAN LIVE IN YELLOWSTONE
AS YOU DO AT HOME! STOP
VACATION. STAY**

For further inform

YELLOWSTONE PARK LODGE

Livingston, Montana (Sept. 20 to June 15)

Vernon Goodwin
E. H. Moorman, Co



Information

SWIMMING POOLS—Our open-air plunge at Mammoth Lodge is a center for fun and good bathing. The warm water comes from the terraces of Mammoth Hot Springs. Near Old Faithful Lodge is another famous swimming pool.

MEDICAL ATTENDANCE—Trained nurses at each lodge. Resident physician in ready communication with all lodges. Completely equipped Government hospital at Mammoth Hot Springs.

MAIL—All mail should be addressed in care of Mammoth Lodge, Yellowstone Park, Wyoming, and should be called for at that point. On request to the clerk at any lodge, the management will forward mail to any point. Daily mail service between all lodges.

TELEPHONE AND TELEGRAPH—Service is available at all lodges. (Local and long distance.)

PULLMAN OFFICES—At Mammoth Lodge, West Yellowstone Station, Cody Station, Bozeman and Gallatin Gateway.

BARBER AND BEAUTY SHOPS—Located at Mammoth Lodge, Old Faithful Lodge, Lake Lodge and Canyon Lodge.

MOTORISTS—Will find our housekeeping tents, cafeterias and delicatessens of great convenience.

SEASON LIMITS—The season opens on June 20th and closes September 20th. Last entrance day for complete tour for railroad passengers is September 15th.

WHAT TO WEAR—Owing to the altitude (about 7,500 feet) the early mornings and evenings are cool. Carry an overcoat, or cloak. Outing suits are sometimes worn but are not necessary. Many travelers bring sweaters and rubbers. Overcoats, sweaters, dusters, rubbers, etc., may be rented in the Park.

GOVERNMENT—Yellowstone Park is under the charge of Superintendent R. W. Toll, a federal official. His headquarters are at Mammoth Hot Springs. All National Parks are under the control of the parks through one of its Bureaus, the National Park Service, of which Hon. Horace M. Albright is Director.

MUSEUM—The National Park Service maintains a museum and information office at Mammoth Hot Springs, and also Ranger Stations throughout the Park where visitors can secure official information. The National Park Service also supplies guides and free lectures.

SADDLE TOURS—Delightful saddle-horse trips are available from every lodge except Lake Lodge and Sylvan Pass Lodge. If possible plan to spend additional time at the lodges for horse-back trips at reasonable rates.

FISHING BUT NO HUNTING—Many trails lead to fishing places. No fishing license is required. "Hunting big game" with a camera is a favorite sport, and foot trails lead through the Geyser Basin, along the lake shores, the rim of the Grand Canyon and out from Roosevelt Lodge.

GUIDE SERVICE—At Old Faithful Lodge a guide conducts our parties over the Geyser Basin, with carefully timed arrivals at erupting geysers. Mammoth Lodge free guide service includes visits to Jupiter, Hymen and Pulpit terraces, Orange Geyser, the Devil's Kitchen and other curiosities. At the Grand Canyon the lodge is located near the canyon rim, and within easy walking distance of Artist's Point. A special guide conducts our guests down "Uncle Tom's Trail" to the very bottom of the Grand Canyon at the foot of the Great Fall.



Recommended!

Stay longer in Yellowstone Park on standard tours. Yellowstone is well worth all the time you spend there. Stay a week, or be thoroughly acquainted with the geysers and the geyser basins; let the Yellowstone Lake and the inspiration and joy and appreciation of living mountains at Roosevelt Lodge or

at all lodges on Transportation time spent at lodges only

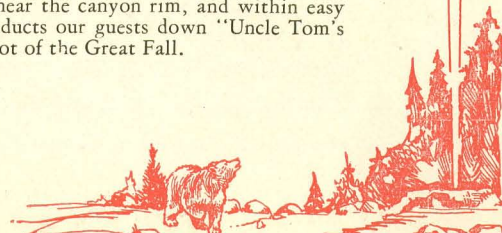
STONE PARK AS CHEAPLY
TAY FOR YOUR WHOLE
Y ALL SUMMER.

ation, address

GE AND CAMPS COMPANY

n, President
General Manager

(June 15 to Sept. 20) Yellowstone Park, Wyoming



The Friendliness of the Lodges Will Appeal to You

THE Yellowstone Park Lodges make a friend of every guest. For more than a generation they have been serving Yellowstone visitors and serving them well. The Yellowstone Lodges have personality. They have the vacation spirit. The unique bungalows, the great rustic central buildings, lobbies and amusement halls, the campfire festivals, the hospitable dining rooms, the community singing, the dancing parties, the free guide service, the college boys and girls who serve you with right good will, the restful, cordial informality and active friendliness—the real “Out-West Americanism” of the lodges—these make up the fabric of an outing adventure which will share interest with the wonder and grandeur of Yellowstone itself. If you are taking a vacation for a “change,” and to see different sorts of things and to enjoy new kinds of experiences; to leave routine, humdrum and ruts behind, go through Yellowstone Park “The Lodge Way.” You will have a real vacation.

From many years' experience, the Yellowstone Park Lodge and Camps Company has developed a truly remarkable system and service. The Lodges are located at the main centers of scenic interest. In each lodge, guests come first to great central buildings, which house lobbies, dining halls, social assembly rooms, business headquarters, curio shops and many of the usual facilities of hotels and clubs. Surrounding the main buildings are the small lodges—of one-room, two-room and four-room capacity. They are of two types—(1) log, (2) rustic clap board—all substantially built, comfortable and well furnished. Each lodge is heated by a rustic wood-burning stove (for nights and mornings are cool in the mountains), the beds are full size and of high quality, the furniture plain but adequate. Lodges are electric lighted, of course. The dining rooms serve wholesome, well-cooked food.

Lodge Dining Rooms

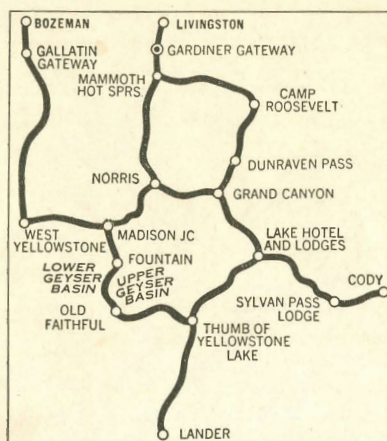


NORTHERN PACIFIC



Yellowstone Park Standard Lodge Tours \$45*

(See bottom of page 11.)



Trace Your Tour on This Map

(1) Gardiner Entrance and Exit (4½ days).

1st Day Lv. Gardiner 10:05 A. M.; Ar. Mammoth Hot Springs 10:30 A. M. (Passengers arriving afternoon train Lv. Gardiner 5:35 P. M.; Ar. Mammoth 6:00 P. M.) 2d Day Lv. Mammoth Hot Springs 8:25 A. M.; Ar. Old Faithful 12:22 P. M. Guide Service in Geyser Basin. 3d Day Lv. Old Faithful 1:50 P. M.; Ar. Yellowstone Lake 4:55 P. M. 4th Day Lv. Lake 10:00 A. M.; Ar. Grand Canyon 11:46 A. M. Canyon trips afternoon and following morning. 5th Day Lv. Canyon 1:35 P. M.; Ar. Mammoth 4:48 P. M.; Lv. Mammoth 6:30 P. M.; Ar. Gardiner 6:52 P. M.

(2) Gardiner Entrance, West Yellowstone Exit (4½ days).

1st Day Lv. Gardiner 10:05 A. M.; Ar. Mammoth Hot Springs 10:30 A. M. (Passengers arriving afternoon train Lv. Gardiner 5:35 P. M.; Ar. Mammoth 6:00 P. M.) 2d Day Lv. Mammoth 8:25 A. M.; Ar. Old Faithful 12:22 P. M. Guide Service in Geyser Basin. 3d Day Lv. Old Faithful 1:50 P. M.; Ar. Yellowstone Lake 4:55 P. M. Stop at Thumb for Fishing Cone. 4th Day Lv. Yellowstone Lake 9:10 A. M.; Ar. Grand Canyon 12:00 Noon. Afternoon and following morning for trips along the Canyon Rim and side trip to Dunraven Pass. 5th Day Lv. Canyon 2:50 P. M.; Ar. West Yellowstone (via Norris) 5:05 P. M.

(3) Gardiner Entrance, Cody Exit (4½ days).

1st Day Lv. Gardiner 10:05 A. M.; Ar. Mammoth Hot Springs 10:30 A. M. (Passengers arriving afternoon train leave Gardiner 5:35 P. M.; Ar. Mammoth 6:00 P. M.) 2d Day Lv. Mammoth 8:25 A. M.; Ar. Old Faithful 12:22 P. M. Guide Service in Basin of Geysers. 3d Day Lv. Old Faithful 1:50 P. M.; Ar. Yellowstone Lake 4:55 P. M. 4th Day Lv. Yellowstone Lake 9:10 A. M.; Ar. Grand Canyon 12:00 Noon. Afternoon for trips along the Canyon Rim. 5th Day Lv. Canyon 9:10 A. M.; Ar. Sylvan Pass Lodge 12:03 P. M.; Lv. Sylvan 1:15 P. M.; Ar. Cody 4:50 P. M.

(4) Gardiner Entrance, Lander Exit (5½ days).

1st Day Lv. Gardiner 10:05 A. M.; Ar. Mammoth Hot Springs 10:30 A. M. Free Guide Service in P. M. (Passengers on afternoon train Lv. Gardiner 5:35 P. M.; Ar. Mammoth Hot Springs 6:00 P. M.) 2d Day Lv. Mammoth Hot Springs 8:25 A. M.; Ar. Old Faithful 12:08 P. M.; Lv. Old Faithful 1:50 P. M.; Ar. Yellowstone Lake 4:55 P. M. Stop at Thumb for Fishing Cone. 3d Day Lv. Yellowstone Lake 9:10 A. M.; Ar. Grand Canyon 12:00 Noon. Side trip to Dunraven Pass. 4th Day Lv. Canyon 8:30 A. M.; Ar. Old Faithful 12:12 P. M. Guide Service in Basin of Geysers. 5th Day Lv. Old Faithful 7:45 A. M.; Ar. Moran 12:27 P. M. 6th Day Lv. Moran 8:00 A. M.; Ar. Brooks Lake 10:00 A. M.; Lv. Brooks Lake 10:30 A. M.; Ar. Dubois 12:30 P. M.; Lv. Dubois 1:30 P. M.; Ar. Lander 5:00 P. M.

(5) Gardiner Entrance, Gallatin Gateway (Bozeman) Exit (4½ days).

1st Day Lv. Gardiner 10:05 A. M.; Ar. Mammoth Hot Springs 10:30 A. M. 2d Day Lv. Mammoth Hot Springs 8:25 A. M.; Ar. Old Faithful 12:22 P. M. 3d Day Lv. Old Faithful 1:50 P. M.; Ar. Yellowstone Lake 4:55 P. M. 4th Day Lv. Yellowstone Lake 9:10 A. M.; Ar. Grand Canyon 12:00 Noon. Side trip to Dunraven Pass and return. 5th Day Lv. Grand Canyon 9:00 A. M.; Ar. West Yellowstone 11:18 A. M.; Lv. West Yellowstone 12:25 P. M.; Ar. Gallatin Gateway Station 4:15 P. M.; Ar. Bozeman 5:00 P. M.

(6) West Yellowstone Entrance and Exit (4½ days).

1st Day Lv. West Yellowstone 9:30 A. M.; Ar. Old Faithful 11:46 A. M. Guide Service through the Basin of Geysers. (Passengers arriving on afternoon train Lv. West Yellowstone 3:45 P. M.; Ar. Old Faithful 6:10 P. M.) 2d Day Lv. Old Faithful 1:50 P. M.; Ar. Yellowstone Lake 4:55 P. M. Stop at Thumb Fishing Cone. 3d Day Lv. Yellowstone Lake 10:00 A. M.; Ar. Grand Canyon 11:46 A. M. 4th Day Lv. Canyon 1:35 P. M.; Ar. Mammoth Hot Springs 4:48 P. M. 5th Day Lv. Mammoth 1:30 P. M.; Ar. West Yellowstone 4:40 P. M. Free Guides on A. M. Terrace Trips.

(7) West Yellowstone Entrance, Gardiner Exit (4½ days).

1st Day Lv. West Yellowstone 9:25 A. M.; Ar. Mammoth Hot Springs 12:01 P. M. (Passengers on afternoon train Lv. West Yellowstone 3:45 P. M.; Ar. Mammoth 6:23 P. M.) 2d Day Lv. Mammoth 8:25 A. M.; Ar. Old Faithful 12:22 P. M. Guide Service in Basin of Geysers. 3d Day Lv. Old Faithful 1:50 P. M.; Ar. Yellowstone Lake 4:55 P. M. 4th Day Lv. Yellowstone Lake 10:00 A. M.; Ar. Grand Canyon 11:46 A. M. 5th Day Lv. Grand Canyon 1:35 P. M.; Ar. Mammoth Hot Springs 4:48 P. M.; Lv. Mammoth 6:30 P. M.; Ar. Gardiner 6:52 P. M.

(8) West Yellowstone Entrance, Cody Exit (4½ days).

1st Day Lv. West Yellowstone 9:30 A. M.; Ar. Old Faithful 11:46 A. M. (Passengers arriving on afternoon train Lv. West Yellowstone 3:45 P. M.; Ar. Old Faithful 6:10 P. M.) 2d Day Lv. Old Faithful 1:50 P. M.; Ar. Yellowstone Lake 4:55 P. M. 3d Day Lv. Lake 10:00 A. M.; Ar. Grand Canyon 11:46 A. M.; Lv. Grand Canyon 1:35 P. M.; Ar. Mammoth 4:48 P. M. Time is given at Canyon on the 4th day. 4th Day Lv. Mammoth 12:45 P. M.; Ar. Grand Canyon (via Norris) 3:40 P. M. 5th Day Lv. Canyon 9:10 A. M.; Ar. Sylvan Pass Lodge 12:03 P. M.; Lv. Sylvan 1:15 P. M.; Ar. Cody 4:50 P. M.

(9) West Yellowstone Entrance, Lander Exit (5½ days).

1st Day Lv. West Yellowstone 9:30 A. M.; Ar. Old Faithful 11:46 A. M. (Passengers arriving on afternoon train Lv. West Yellowstone 3:45 P. M.; Ar. Old Faithful 6:10 P. M.) Lv. Old Faithful 1:50 P. M.; Ar. Yellowstone Lake 4:55 P. M. 2d Day Lv. Yellowstone Lake 10:00 A. M.; Ar. Grand Canyon 11:46 A. M. 3d Day Lv. Canyon 1:30 P. M.; Ar. Mammoth Hot Springs 4:48 P. M. 4th Day Lv. Mammoth 8:25 A. M.; Ar. Old Faithful 12:22 P. M. Guide Service through the Basin. 5th Day Lv. Old Faithful 7:45 A. M.; Ar. Moran 12:27 P. M. 6th Day Lv. Moran 8:00 A. M.; Ar. Brooks Lake 10:00 A. M.; Lv. Brooks Lake 10:30 A. M.; Ar. Dubois 12:30 P. M.; Lv. Dubois 1:30 P. M.; Ar. Lander 5:00 P. M.

(10) West Yellowstone Entrance, Gallatin Gateway (Bozeman) Exit (4½ days).

1st Day Lv. West Yellowstone 9:30 A. M.; Ar. Old Faithful 11:46 A. M. 2d Day Lv. Old Faithful 1:50 P. M.; Ar. Yellowstone Lake 4:55 P. M. 3d Day Lv. Yellowstone Lake 10:00 A. M.; Ar. Grand Canyon 11:46 A. M. 4th Day Lv. Grand Canyon 1:30 P. M.; Ar. Mammoth Hot Springs 4:48 P. M. 5th Day Lv. Mammoth Hot Springs 8:45 A. M.; Ar. West Yellowstone 11:23 A. M.; Lv. West Yellowstone 12:25 P. M.; Ar. Gallatin Gateway Station 4:15 P. M.; Ar. Bozeman 5:00 P. M.

(11) Cody Entrance and Exit (4½ days).

1st Day Lv. Cody Inn 9:25 A. M.; Ar. Sylvan Pass Lodge 1:00 P. M. Lv. Sylvan 1:45 P. M.; Ar. Canyon 5:22 P. M. 2d Day Lv. Grand Canyon 1:35 P. M.; Ar. Mammoth 4:48 P. M. Trips along Canyon Rim during the forenoon. 3d Day Lv. Mammoth Hot Springs 8:25 A. M.; Ar. Old Faithful 12:22 P. M. 4th Day Lv. Old Faithful 1:50 P. M.; Ar. Yellowstone Lake 4:55 P. M. 5th Day Lv. Yellowstone Lake 9:54 A. M.; Ar. Sylvan Pass Lodge 12:03 P. M.; Lv. Sylvan 1:15 P. M.; Ar. Cody Inn 4:50 P. M.

(12) Cody Entrance, Gardiner Exit (4½ days).

1st Day Lv. Cody Inn 9:25 A. M.; Ar. Sylvan Pass Lodge 1:00 P. M.; Lv. Sylvan 1:45 P. M.; Ar. Grand Canyon 5:22 P. M. Ample time at Canyon is given on 4th and 5th days. 2d Day Lv. Canyon 8:30 A. M.; Ar. Old Faithful (via Norris) 12:08 P. M. 3d Day Lv. Old Faithful 1:50 P. M.; Ar. Yellowstone Lake 4:55 P. M. 4th Day Lv. Yellowstone Lake 10:00 A. M.; Ar. Grand Canyon 11:46 A. M. 5th Day Lv. Canyon 1:35 P. M.; Ar. Mammoth Hot Springs 4:48 P. M.; Lv. Mammoth 6:30 P. M.; Ar. Gardiner 6:52 P. M.

(13) Cody Entrance, West Yellowstone Exit (4½ days).

1st Day Lv. Cody Inn 9:25 A. M.; Ar. Sylvan Pass Lodge 1:00 P. M.; Lv. Sylvan 1:45 P. M.; Ar. Yellowstone Lake 3:54 P. M. 2d Day Lv. Yellowstone Lake 10:00 A. M.; Ar. Grand Canyon 11:46 A. M. Afternoon and next morning for viewing Canyon. 3d Day Lv. Grand Canyon 1:35 P. M.; Ar. Mammoth Hot Springs 4:48 P. M. 4th Day Lv. Mammoth 8:25 A. M.; Ar. Old Faithful 12:22 P. M. 5th Day Lv. Old Faithful 3:45 P. M.; Ar. West Yellowstone 5:25 P. M. Guide Service in Basin of Geysers.

(14) Cody Entrance, Lander Exit (5½ days).

1st Day Lv. Cody 9:25 A. M.; Ar. Sylvan Pass Lodge 1:00 P. M.; Lv. Sylvan 1:45 P. M.; Ar. Yellowstone Lake 3:54 P. M. 2d Day Lv. Yellowstone Lake 10:00 A. M.; Ar. Grand Canyon 11:46 A. M. Afternoon and next morning for viewing Canyon. 3d Day Lv. Grand Canyon 1:35 P. M.; Ar. Mammoth Hot Springs 4:48 P. M. 4th Day Lv. Mammoth 8:25 A. M.; Ar. Old Faithful 12:22 P. M. 5th Day Lv. Old Faithful 7:45 A. M.; Ar. Moran (Jackson Lake Lodge) 12:27 P. M. 6th Day Lv. Moran 8:00 A. M.; Ar. Brooks Lake 10:00 A. M.; Lv. Brooks Lake 10:30 A. M.; Ar. Dubois 12:30 P. M.; Lv. Dubois 1:30 P. M.; Ar. Lander 5:00 P. M.

Yellowstone Park Standard Lodge Tours \$45*

(15) **Cody Entrance, Gallatin Gateway (Bozeman) Exit (5½ days).**
1st Day Lv. Cody 9:25 A. M.; Ar. Sylvan Pass Lodge 1:00 P. M.; Lv. Sylvan Pass Lodge 1:45 P. M.; Ar. Yellowstone Lake 3:54 P. M. 2d Day Lv. Yellowstone Lake 10:00 A. M.; Ar. Grand Canyon 11:46 A. M. 3d Day Lv. Grand Canyon 1:30 P. M.; Ar. Mammoth Hot Springs 4:48 P. M. 4th Day Lv. Mammoth Hot Springs 8:25 A. M.; Ar. Old Faithful 12:22 P. M. 5th Day Lv. Old Faithful 9:45 A. M.; Ar. West Yellowstone 11:26 A. M.; Lv. West Yellowstone 12:25 P. M.; Ar. Gallatin Gateway Station 4:15 P. M.; Ar. Bozeman 5:00 P. M.

(16) **Lander Entrance, Lander Exit (7 days).**
1st Day Lv. Lander 7:30 A. M.; Ar. Jackson Lake 4:45 P. M. 2d Day Lv. Jackson Lake 1:36 P. M.; Ar. Yellowstone Lake 5:55 P. M. 3d Day Lv. Yellowstone Lake 10:00 A. M.; Ar. Canyon 11:46 A. M. 4th Day Lv. Canyon 1:35 P. M.; Ar. Mammoth 4:47 P. M. 5th Day Lv. Mammoth 8:25 A. M.; Ar. Old Faithful 12:22 P. M. 6th Day Lv. Old Faithful 7:45 A. M.; Ar. Jackson 12:27 P. M. 7th Day Lv. Jackson 8:00 A. M.; Ar. Lander 5 P. M.

(17) **Lander Entrance, Gardiner Exit (5½ days).**
1st Day Lv. Lander 7:30 A. M.; Ar. Dubois 12:00 Noon; Lv. Dubois 1:00 P. M.; Ar. Brooks Lake 2:45 P. M.; Lv. Brooks Lake 3:00 P. M.; Ar. Moran 4:45 P. M. 2d Day Lv. Moran 1:36 P. M.; Ar. Yellowstone Lake 5:55 P. M. 3d Day Lv. Yellowstone Lake 10:00 A. M.; Ar. Grand Canyon 11:46 A. M. 4th Day Lv. Canyon 8:30 A. M.; Ar. Old Faithful 12:08 P. M. 5th Day Lv. Old Faithful 1:50 P. M.; Ar. Yellowstone Lake 4:55 P. M. 6th Day Lv. Yellowstone Lake 10:00 A. M.; Ar. Canyon 11:46 A. M.; Lv. Canyon 1:35 P. M.; Ar. Mammoth 4:48 P. M.; Lv. Mammoth 6:30 P. M.; Ar. Gardiner 6:52 P. M.

(18) **Lander Entrance, West Yellowstone Exit (5½ days).**
1st Day Lv. Lander 7:30 A. M.; Ar. Dubois 12:00 Noon; Lv. Dubois 1:00 P. M.; Ar. Brooks Lake 2:45 P. M.; Lv. Brooks Lake 3:00 P. M.; Ar. Moran 4:45 P. M. 2d Day Lv. Moran 1:36 P. M.; Ar. Yellowstone Lake 5:55 P. M. 3d Day Lv. Yellowstone Lake 10:00 A. M.; Ar. Grand Canyon 11:46 A. M. 4th Day Lv. Canyon 1:35 P. M.; Ar. Mammoth Hot Springs 4:48 P. M. 5th Day Lv. Mammoth 8:25 A. M.; Ar. Old Faithful 12:22 P. M. 6th Day Lv. Old Faithful 3:45 P. M.; Ar. West Yellowstone 5:25 P. M.

(19) **Lander Entrance, Cody Exit (5½ days).**
1st Day Lv. Lander 7:30 A. M.; Ar. Dubois 12:00 Noon; Lv. Dubois 1:00 P. M.; Ar. Brooks Lake 2:45 P. M.; Lv. Brooks Lake 3:00 P. M.; Ar. Moran 4:45 P. M. 2d Day Lv. Moran 1:38 P. M.; Ar. Yellowstone Lake 5:55 P. M. 3d Day Lv. Yellowstone Lake 10:00 A. M.; Ar. Canyon 11:46 A. M.; Lv. Canyon 1:35 P. M.; Ar. Mammoth 4:48 P. M. 4th Day Lv. Mammoth Hot Springs 8:25 A. M.; Ar. Old Faithful 12:22 P. M. 5th Day Lv. Old Faithful 1:50 P. M.; Ar. Yellowstone Lake 4:55 P. M. 6th Day Lv. Yellowstone Lake 9:54 A. M.; Ar. Sylvan Pass Lodge 12:03 P. M.; Lv. Sylvan 1:15 P. M.; Ar. Cody 4:50 P. M.

(20) **Lander Entrance, Gallatin (Bozeman), Exit (5½ days).**
1st Day Lv. Lander 7:30 A. M.; Ar. Dubois 12:00 noon; Lv. Dubois 1:00 P. M.; Ar. Jackson Lake (Moran) 4:45 P. M. 2d Day Lv. Jackson Lake (Moran) 1:38 P. M.; Ar. Yellowstone Lake 5:55 P. M. 3d Day Lv. Yellowstone Lake 10:00 A. M.; Ar. Grand Canyon 11:46 A. M. 4th Day Lv. Grand Canyon 1:35 P. M.; Ar. Mammoth Hot Springs 4:48 P. M. 5th Day Lv. Mammoth Hot Springs 8:25 A. M.; Ar. Old Faithful 12:22 P. M. 6th Day Lv. Old Faithful 9:45 A. M.; Ar. West Yellowstone 11:26 A. M.; Lv. West Yellowstone 12:25 P. M.; Ar. Gallatin Gateway Station 4:15 P. M.; Ar. Bozeman 5:00 P. M.

(21) **Bozeman (Gallatin Gateway) Entrance and Exit (4½ days).**
1st Day Lv. Bozeman 8:20 A. M.; Lv. Gallatin Gateway Station 9:00 A. M.; Ar. West Yellowstone 12:50 P. M.; Lv. West Yellowstone 1:45 P. M.; Ar. Old Faithful 4:00 P. M. 2d Day Lv. Old Faithful 1:50 P. M.; Ar. Yellowstone Lake 4:55 P. M. 3d Day Lv. Yellowstone Lake 10:00 A. M.; Ar. Grand Canyon 11:46 A. M. 4th Day Lv. Grand Canyon 1:35 P. M.; Ar. Mammoth Hot Springs 4:48 P. M. 5th Day Lv. Mammoth Hot Springs 8:15 A. M.; Ar. West Yellowstone 11:23 A. M.; Lv. West Yellowstone 12:25 P. M.; Ar. Gallatin Gateway 4:15 P. M.; Ar. Bozeman 5:00 P. M.

(22) **Bozeman (Gallatin Gateway) Entrance, Gardiner Exit (4½ days).**

1st Day Lv. Bozeman 8:20 A. M.; Lv. Gallatin Gateway Station 9:00 A. M.; Ar. West Yellowstone 12:50 P. M.; Lv. West Yellowstone 1:45 P. M.; Ar. Old Faithful 4:00 P. M. 2d Day Lv. Old Faithful 1:50 P. M.; Ar. Yellowstone Lake 4:55 P. M. 3d Day Lv. Yellowstone Lake 10:00 A. M.; Ar. Grand Canyon 11:46 A. M. 4th Day Lv. Grand Canyon 1:35 P. M.; Ar. Mammoth Hot Springs 4:48 P. M. 5th Day Lv. Mammoth Hot Springs 6:30 P. M.; Ar. Gardiner 6:52 P. M.

(23) **Bozeman (Gallatin Gateway) Entrance, West Yellowstone Exit (4½ days).**

1st Day Lv. Bozeman 8:20 A. M.; Lv. Gallatin Gateway Station 9:00 A. M.; Ar. West Yellowstone 12:50 P. M.; Lv. West Yellowstone 1:45 P. M.; Ar. Old Faithful 4:00 P. M. 2d Day Lv. Old Faithful 1:50 P. M.; Ar. Yellowstone Lake 4:55 P. M. 3d Day Lv. Yellowstone Lake 10:00 A. M.; Ar. Grand Canyon 11:46 A. M. 4th Day Lv. Grand Canyon 1:35 P. M.; Ar. Mammoth Hot Springs 4:48 P. M. 5th Day Lv. Mammoth Hot Springs 1:30 P. M.; Ar. West Yellowstone 4:45 P. M.

(24) **Bozeman (Gallatin Gateway) Entrance, Cody Exit (4½ days).**

1st Day Lv. Bozeman 8:20 A. M.; Lv. Gallatin Gateway Station 9:00 A. M.; Ar. West Yellowstone 12:50 P. M.; Lv. West Yellowstone 1:45 P. M.; Ar. Old Faithful 4:00 P. M. 2d Day Lv. Old Faithful 1:50 P. M.; Ar. Yellowstone Lake 4:55 P. M. 3d Day Lv. Yellowstone Lake 10:00 A. M.; Ar. Grand Canyon 11:46 A. M.; Lv. Grand Canyon 1:35 P. M.; Ar. Mammoth Hot Springs 4:48 P. M. 4th Day Lv. Mammoth Hot Springs 12:45 P. M.; Ar. Grand Canyon (via Norris) 3:10 P. M. 5th Day Lv. Grand Canyon 9:10 A. M.; Ar. Sylvan Pass Lodge 12:03 P. M.; Lv. Sylvan Pass Lodge 1:15 P. M.; Ar. Cody 4:50 P. M.

(25) **Bozeman (Gallatin Gateway) Entrance, Lander Exit (5½ days).**

1st Day Lv. Bozeman 8:20 A. M.; Lv. Gallatin Gateway Station 9:00 A. M.; Ar. West Yellowstone 12:50 P. M.; Lv. West Yellowstone 1:45 P. M.; Ar. Old Faithful 4:00 P. M. 2d Day Lv. Old Faithful 1:50 P. M.; Ar. Yellowstone Lake 4:55 P. M. 3d Day Lv. Yellowstone Lake 10:00 A. M.; Ar. Grand Canyon 11:46 A. M.; Lv. Grand Canyon 1:35 P. M.; Ar. Mammoth Hot Springs 4:48 P. M. 4th Day Lv. Mammoth Hot Springs 8:25 A. M.; Ar. Old Faithful 12:22 P. M. 5th Day Lv. Old Faithful 7:45 A. M.; Ar. Jackson Lake (Moran)* 12:27 P. M.

*Passengers remain at Jackson Lake (Moran) overnight and early the next morning leave via the stages of the Lander Yellowstone Transportation Company; arrive Lander, Wyoming, 5:00 P. M. the same day.

Stop-Over at Roosevelt Lodge

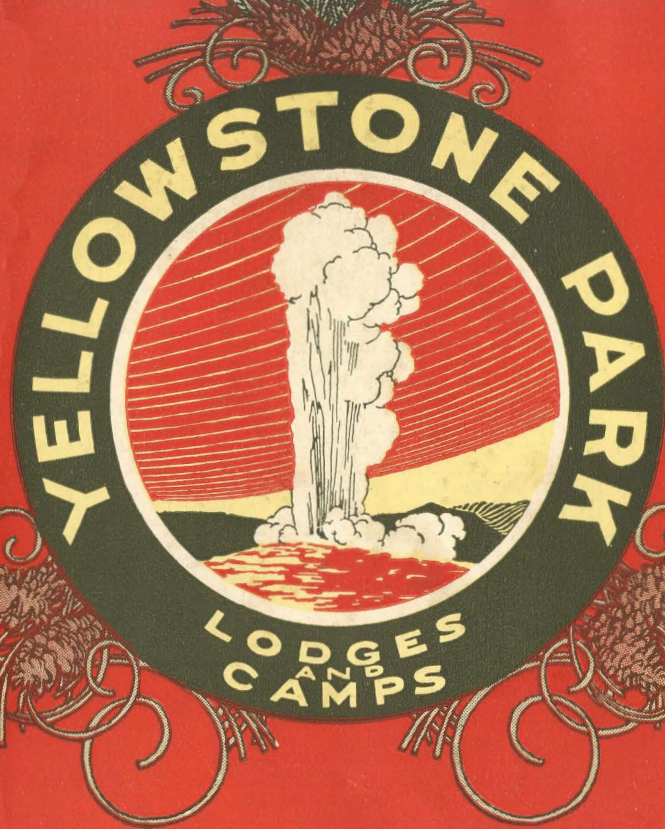
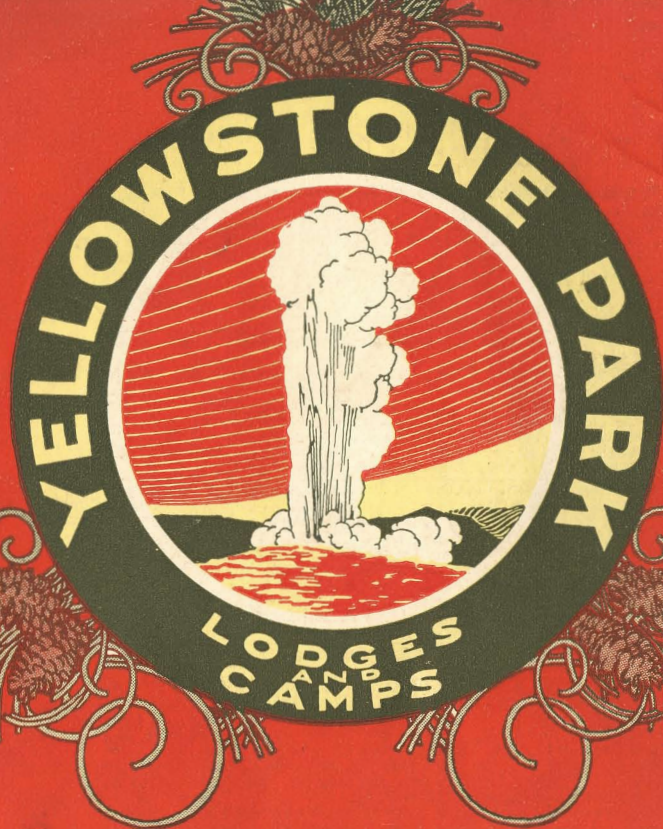
A stop at Roosevelt Lodge is not included in the standard "Four-and-One-Half-Day" sight-seeing tour. There is no hotel in this part of Yellowstone. Consequently, passengers using the regular service of the hotels or lodges, who desire to stay overtime and see this part of Yellowstone, stop at Roosevelt Lodge. Roosevelt Lodge has a charming location at the foot of great mountains. The center of the camp is a rustic Central Hall. Near by, under the firs and giant pines, are the sleeping lodges. These consist of bungalow-tents, frame cottages and log cabins. Saddle-horse trips with guide service give the fullest freedom for exploration and outing excursions.

The charges at Roosevelt Lodge are \$4.50 a day, American plan. Children under 8, half rate. Passengers who elect tours number 1-5-6-7-8-9-10-11-12-13-14-15-16-17-18-19-20-21-22-24 and 25 (see tours on pages 10 and 11), are not required to pay any extra automobile fare to go to Roosevelt Lodge, as these tours pass the lodge and unlimited stop-over privileges are allowed. Passengers using tours number 2-3-4 and 23 pay an extra transportation charge of \$5.00. For this amount they are transported back to Mammoth Hot Springs and thence resume their journey either to West Yellowstone, Cody or Lander.

TICKETS REQUIRED FOR \$45 TOURS IN CODY, BOZEMAN, GALLATIN AND LANDER

*The \$45.00 rate for standard tour, covering automobile transportation and lodge accommodations, applies to holders of round trip rail tickets and to holders of one way rail tickets reading via Northern Pacific Ry. to Gardiner or Bozeman, C. M. St. P. & P. R. R. to Gallatin Gateway, C. B. & Q. R. R. to Cody, Union Pacific System to West Yellowstone, or C. & N. W. Ry. to Lander, except as follows: For passengers holding rail tickets reading via Northern Pacific Ry. through Bozeman, or via C. M. St. P. & P. R. R. through Three Forks, the side trip fare from Bozeman, or from Three Forks via rail to Gallatin Gateway, thence Yellowstone Park Transportation Company, will be \$48.92. For passengers holding rail tickets issued west of O'Neill, Nebraska, the round trip fare from Lander will be \$78.00. The local round trip selling fares for passengers not holding rail tickets as above will be:

	In Gardiner	In Cody	In West Yellowstone	In Bozeman	In Gallatin Gateway	In Lander
Bozeman - - - - -	\$50.00	\$52.25	\$50.00	\$55.00	\$54.00	\$66.50
Gallatin Gateway - - - - -	49.00	51.25	49.00	54.00	53.00	65.50
Gardiner - - - - -	45.00	47.25	45.00	50.00	49.00	61.50
Cody - - - - -	47.25	49.50	47.25	52.25	51.25	63.75
Lander - - - - -	61.50	63.75	61.50	66.50	65.50	78.00
West Yellowstone - - - - -	45.00	47.25	45.00	50.00	49.00	61.50



Always Travel



Always Travel

