

# Rainier National Park



# Go to Rainier Park on the Northern Pacific Ry.

FROM Chicago to the North Pacific Coast our swift transcontinental trains carry you along "2000 miles of startling beauty" to Seattle and Tacoma where Park sightseeing autos await Rainier passengers.

The New North Coast Limiteds take their rightful place among the first trains in the land for travel perfection.

On the new beautiful observation-club cars you will find a fine lounge expressive of the utmost taste in interior finish with furniture, walls and floors in new soft colors con-

forming strictly to the Adam period design; a wider, permanently railed observation platform with a searchlight for night seeing, a valet, ladies' maid, ladies' lounge, barber for men, women and children, library, writing facilities, buffet, shower baths, several smoking and card rooms, specially wide, high windows. The new North Coast Limiteds are distinctly and unqualifiedly a "Five Million Dollar Travel Triumph."

You will enjoy the courteous friendly service of Northern Pacific employees and the delicious meals our chefs prepare. Big baked potatoes! Big baked apples! We believe you will enjoy every meal aboard our trains.

Let us help you plan your trip, making itinerary, reservations and arrangements for you.

A. B. Smith  
Passenger Traffic Manager  
St. Paul, Minn.



## Some of Our Principal Offices

BOSTON, MASS., 217 Old South Building.  
C. E. Foster..... G. A. P. D.  
BUFFALO, NEW YORK, 644 Ellicott  
Square.  
C. W. Beardsell..... T. P. A.  
CHICAGO, ILL., 73 E. Jackson Blvd.  
M. E. Harlan, G. A., H. M. Hauskins,  
T. P. A., J. B. Hinkson, T. P. A.  
CINCINNATI, OHIO, 1001 Neave Bldg.  
W. C. Hartnett..... G. A.  
CLEVELAND, OHIO, 708 Hippodrome  
Building.  
W. Adamson..... G. A.  
DALLAS, TEXAS, 903 Southwestern Life  
Building.  
Charles Sorg, Jr., Southwestern Agent  
DES MOINES, IOWA, 216 Equitable Bldg.  
Robert H. McCurdy..... T. P. A.  
DETROIT, MICH., 407 Transportation  
Building.  
Geo. Barnes..... G. A.  
DULUTH, MINN., 334 West Superior St.  
J. I. Thomas..... D. F. & P. A.  
KANSAS CITY MO., 115 Ry. Exchange  
Building.  
F. A. Acker..... G. A.  
LOS ANGELES, CAL., 510 Central Bldg.  
J. P. Roddy..... G. A.  
MILWAUKEE, WIS., 1126 First Wis.  
Nat'l Bank Bldg.  
R. L. Kelly..... G. A.  
MINNEAPOLIS, MINN., 522 2nd Avenue  
South.  
G. F. McNeill..... A. G. P. A.  
NEW YORK CITY, N. Y., 280 Broadway.  
W. F. Mershon..... G. A. P. D.  
PHILADELPHIA, PA., 809-10 Finance  
Building.  
B. M. Decker..... G. A.  
PITTSBURGH, PA., 518 Park Building.  
W. H. Millard..... G. A.  
ST. LOUIS, MO., 411 Olive St., Room  
301-3.  
R. K. Cross..... G. A.  
ST. PAUL, MINN., 5th and Jackson Sts.  
M. R. Johnson..... C. P. & T. A.  
SAN FRANCISCO, CAL., 633 Monadnock  
Building.  
J. L. Norton..... G. A.  
WINNIPEG, MAN., 349 Main Street.  
J. C. Spracklin..... G. A.

## RATES, PARADISE INN AMERICAN PLAN

Two, or more, persons in half of double  
bungalow tent with meals, per day,  
each..... \$5.00  
One person in half of double bungalow,  
tent, with meals, per day..... 5.50  
Two, or more, persons in room, Para-  
dise Inn, with meals, per day, each 7.00  
One person in room, Paradise Inn,  
with meals, per day..... 7.50  
Two, or more, persons in room, with  
private bath, Paradise Inn, with  
meals, per day, each..... 9.00  
One person in room, with private bath,  
Paradise Inn, with meals, per day 10.00  
Single meals: Breakfast..... 1.25  
Luncheon..... 1.50  
Dinner..... 1.50  
Children, under 8, half rates.  
Rooms in hotel, and bungalow tents, will  
be assigned only to guests taking all meals  
at Paradise Inn. Paradise Inn is operated  
on American plan only.  
A discount of ten per cent will be allowed  
patrons of Paradise Inn who remain one  
week or more.

## PARADISE CAMP

This is a tent camp, located a short dis-  
tance west of Paradise Inn, but separately  
operated in every way. Camp service only  
provided. Tent for two persons, with com-  
plete equipment except bedding, \$1.00 per  
day. Blankets rented at 25 cents per pair  
per day. Sheets, pillows, pillow-cases, two  
towels per day, rented at 40 cents for first  
day, 25 cents per day thereafter. Meals a  
la carte at moderate prices served in the  
new Camp Service Building.

To patrons remaining one week or more  
in camp a discount of ten per cent will be  
allowed on tent and bedding rental charges.

No discount can be allowed on lunch  
service.

## NATIONAL PARK INN

\$4.50 and up (American Plan). Vacation  
Rate—\$17.50 per week.

## AUTOMOBILE TRANSPORTATION CHARGES

	From Tacoma	From Seattle
Longmire Springs, round trip	\$9.00	\$12.00
Nisqually Glacier, round trip	10.00	13.00
Narada Falls, round trip...	11.00	14.00
Paradise Valley, round trip..	12.00	15.00

# A Picture Book of Rainier National Park

AMERICA'S noblest mountain peak is Mount Rainier, the King of the Cascades, which rises from the center of Rainier National Park. The beauty and majesty of Mount Rainier are indescribable. Its spell is cast over the Pacific Northwest. Girdled with forests of giant Douglas fir and pine, carpeted with a glorious profusion of wild flowers which blossom to the very snow line of the Mountain, crowned with a glistening dome, the center of one of the world's largest glacial systems whose rivers of ice reach great fingers down the sides of the Mountain like a mammoth starfish — there is no single peak in the United States comparable to Mount Rainier for noble grandeur, and few, indeed, in the world.

The Park is open from June to September. Winding through great aisles of silent tree-giants, you approach Rainier through an extensive national forest, passing the beautiful rustic gateway of the Park entrance with the forest still about you.

Just within the gate is a lodge where tourists are registered, and then comes another plunge into the towering timber. National Park Inn and Longmire Springs appear suddenly, at the foot of the real beginning of the mountain road. This is a beautiful spot, where many travelers who have come for a real stay in the Park will want to linger.

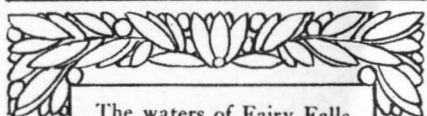
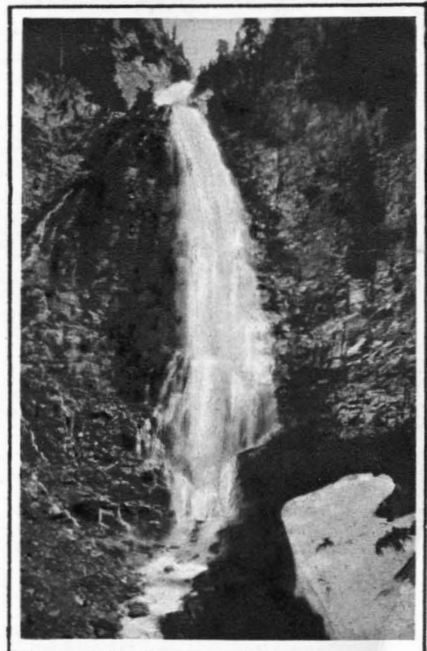
The trees are now larger and larger, and through occasional gaps when the road emerges to skirt some great gorge, come dazzling glimpses of the top of the Mountain. It seems so near now that you are excited with anticipation. Surely before long you will be right there at the foot of the glaciers!

Boisterous, roaring water-falls, rushing white rivers of glacial water, awesome canyons and thrilling jagged mountain sky-lines make the approach to Paradise Inn an unforgettable experience.

The road winds on, up and up until finally it ends where the eternal snows begin.

Paradise Inn, and a little settlement of bungalow-camps, rest in the lovely Paradise Valley, 5,400 feet above sea level. Here is a beautiful hotel of the Swiss chalet type, famous for its warm hospitality. The guide house, stores, museum and camp buildings are nearby — and, right before you, dominating everything is the great white peak of Rainier, far above, yet so near that you fall silent with reverent awe as you see in detail its monumental outline and its robe of everlasting snow.

Behind the Inn rises the Tatoosh Range, a jagged, spectacular line of mountains. Constantly in your ears is the sound of rushing water, for the glaciers feed countless clear swift streams and tumbling water-falls.

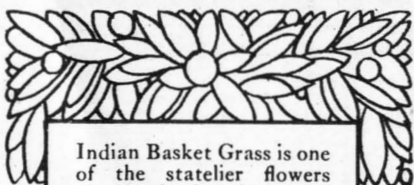


The waters of Fairy Falls drop 700 feet at the head of Stevens Canyon. There are dozens of beautiful water-falls in Rainier National Park.





"Above the forests," John Muir wrote, "there is a zone of the loveliest flowers, 50 miles in circuit and nearly 2 miles wide, so closely planted and luxurious that it seems as if Nature, glad to make an open space between woods so dense and ice so deep, were economizing the precious ground and trying to see how many of her darlings she can get together in one mountain wreath. \*\*Altogether this is the richest subalpine garden I have ever found, a perfect flower elysium."



Indian Basket Grass is one of the statelier flowers among the bewildering varieties which bloom on Rainier's slopes.

Here the adventurous spirit of Rainier Park fills you. Everyone is ready to *do* something. Hikers, skiers, toboggan parties, horseback riders and mountain climbers are starting out and returning all the time. Everyone is eager and excited about unusual experiences and thrilling sights. The guides are besieged with admiring tourists who want to photograph them and question them about *other* trips to be taken -- other sights to see.

Hans and Heinie Fuhrer, the famous Swiss Alpine guides, go and come with the most ambitious climbers who aspire to nothing short of Rainier's very summit. This is a climb of almost two days and a genuine test of endurance. When a clear yodel is heard in the distance everyone rushes out to watch the summit climbers triumphantly descend after the most strenuous and glorious experience of their lives.

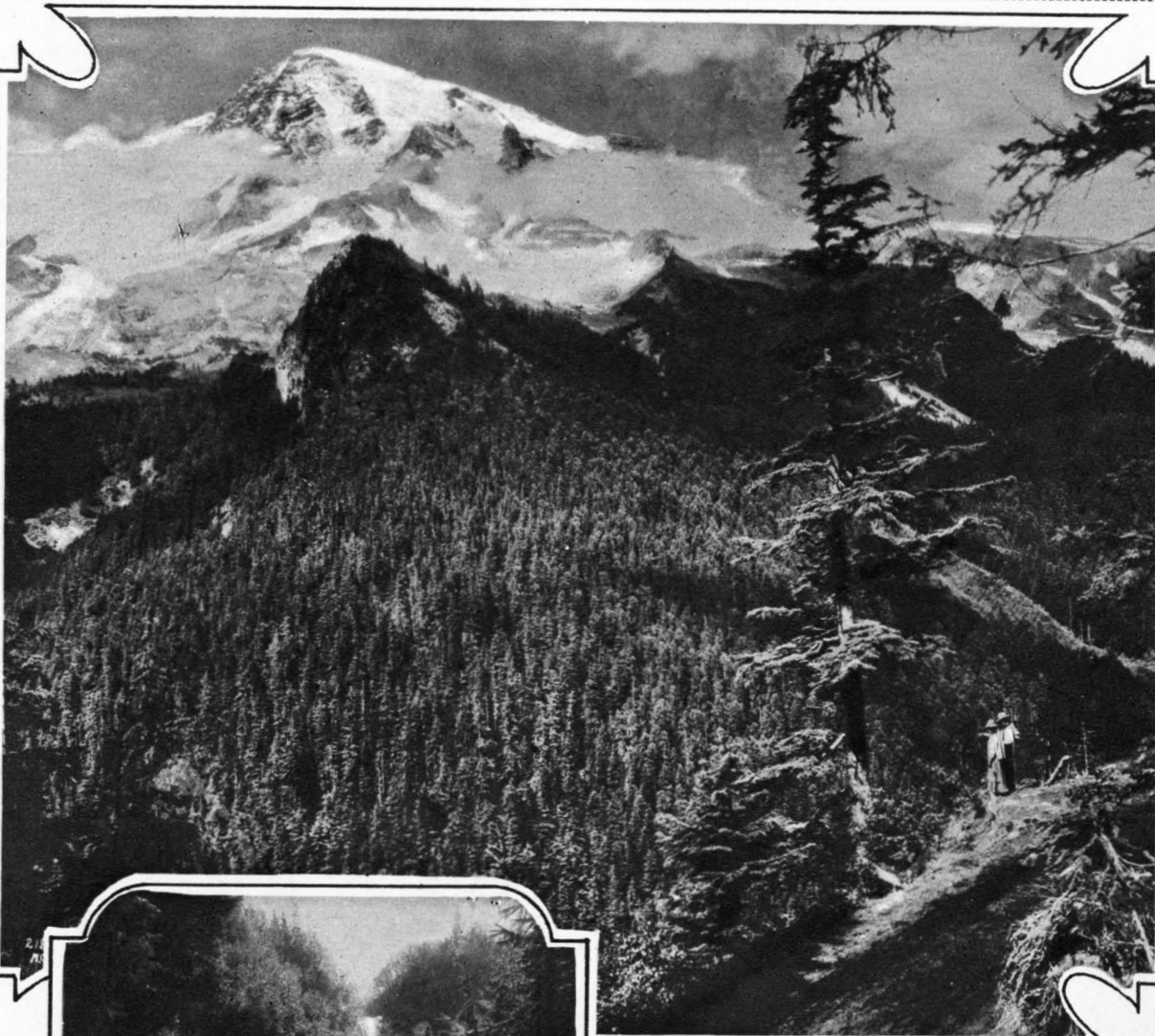
Every evening, pictures are shown in the auditorium adjoining the guide house, to illustrate the attractions of the hiking and saddle trips to be taken the next day on the glaciers and into the more remote regions of the Park. Sometimes big bon-fires and outdoor entertainments make the evenings gay, and dances in the big lobby of the Inn always keep a large group of guests busy and amused in the evening.

Excitement? Yes, plenty of it, but if you wish to rest, there is the long comfortable lounge, with great fireplaces at either end, there is the sunny porch facing Rainier's white dome, and there are numberless pleasant and easy paths leading through the flower fields and across the meadows surrounding Paradise Inn.

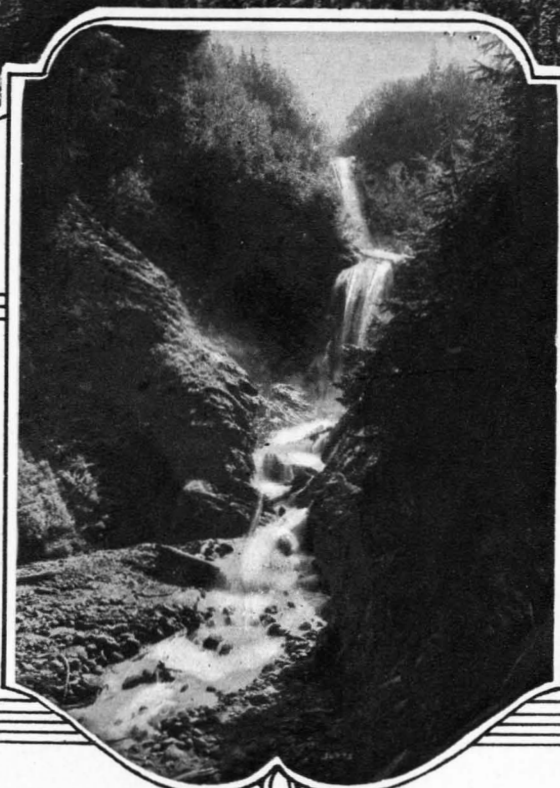
Rainier National Park is America's Switzerland. Whoever spends a vacation there is richer by far than before he entered its magic forests. He has spent wonderful hours on the slopes of "The Mountain That Was God" and he will never be able to forget them.







Nature reaches glorious scenic triumphs in Rainier—  
soft clouds, green forests, snowy peaks.



The Falls in Van Trump Creek are typical of the  
mountain streams of the park, fed by glaciers far above.





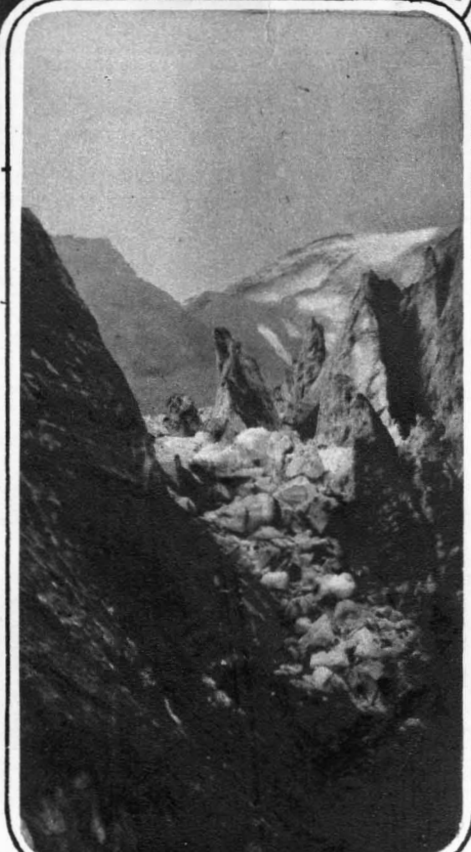
From the mountain trails of the Tatoosh Range Mount Rainier is a beautiful spectacle.

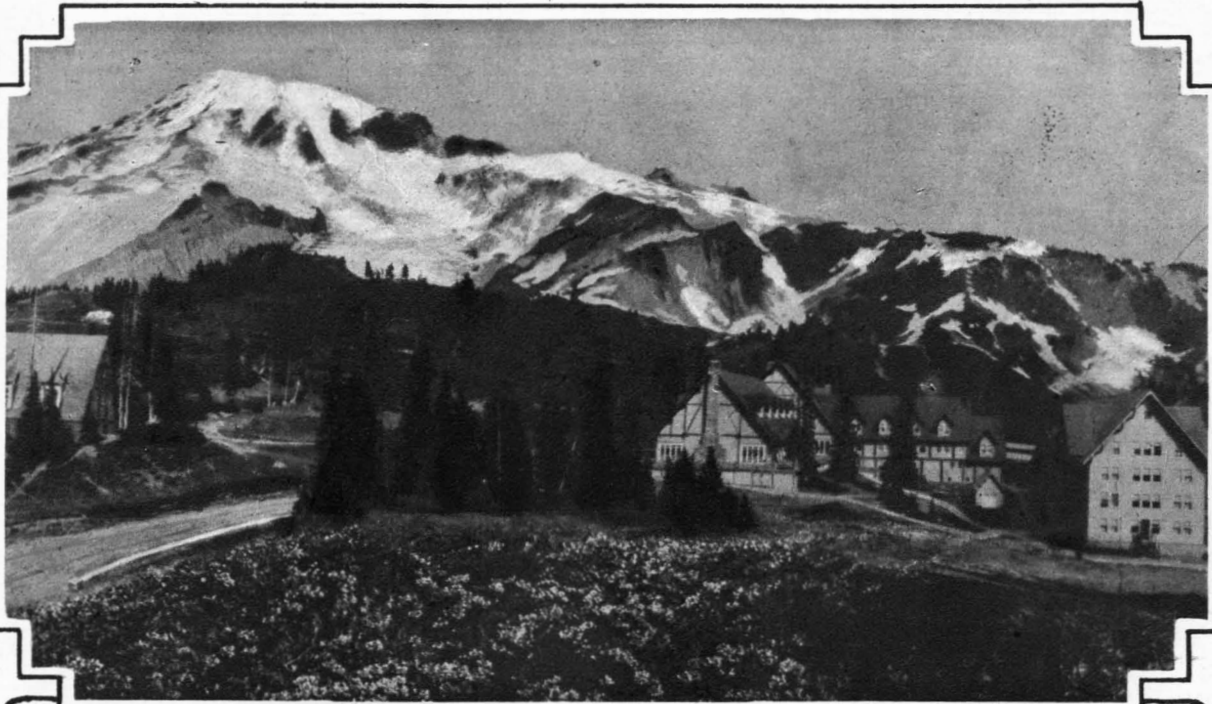


Narada Fall of the Paradise River has a sheer drop of 150 feet.



Deep crevasses in the Nisqually Glacier are explored by the tourists under expert guidance.





In summer, flowers replace the snow in the sunny meadows about the Inn and camps



Paradise Inn sleeps all winter under a blanket of snow which practically buries the hotel

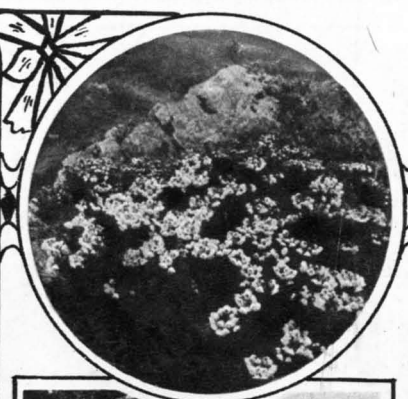




Upper—Heliotrope  
Lower—Mountain Asters



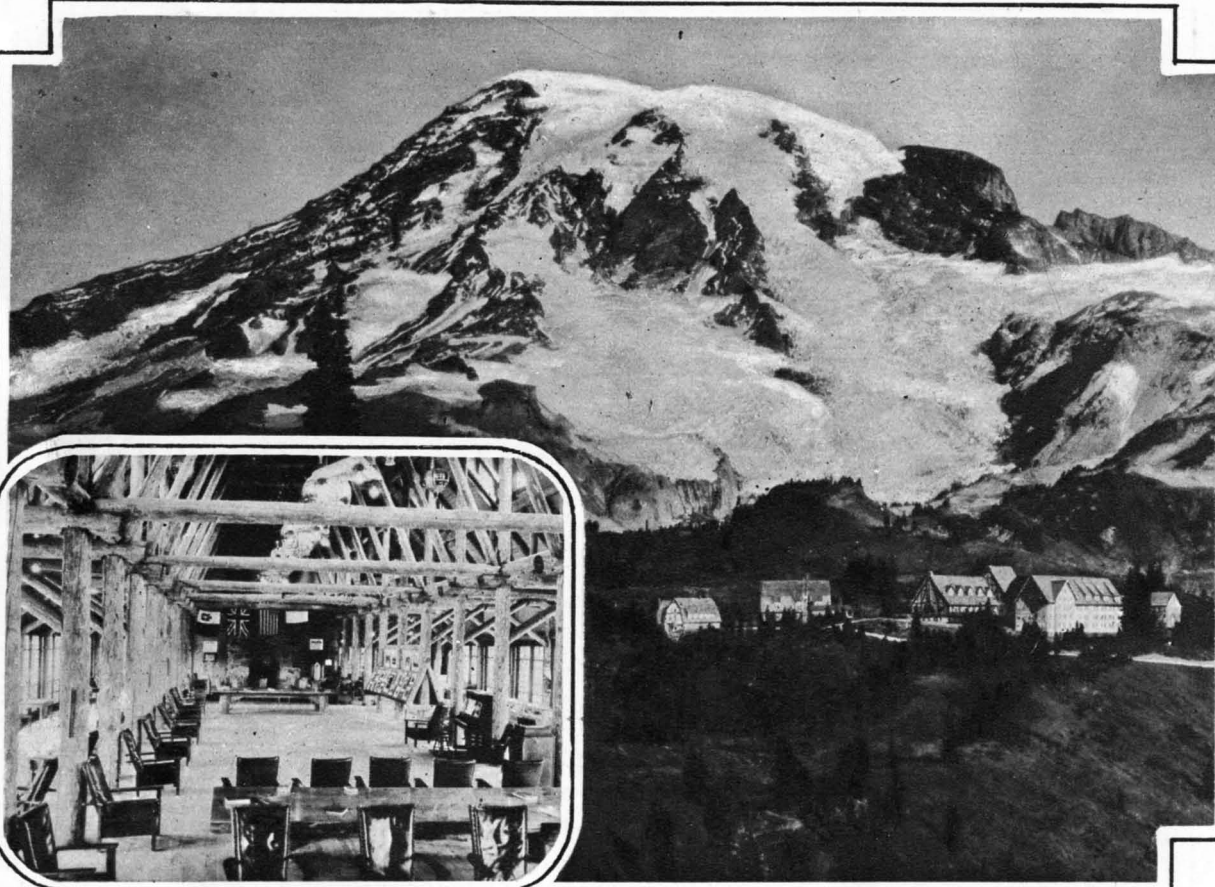
Avalanche lilies are the flowers you think of first when you think of Mt. Rainier.



Upper—Pink heather  
Lower—Fringed gentian



The anemone, a flower from 8 to 20,000 feet.



From peak of Tatoosh one looks upon a magnificent Paradise green valley the foot of the snowier's snow.

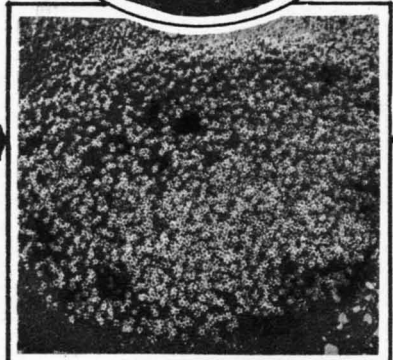
Insert: space lounge Paradise Inn. Guests enjoy the program and dance here.

"Hitting Skyline Trail one of the best recreation Park views. The horse mountain riders."

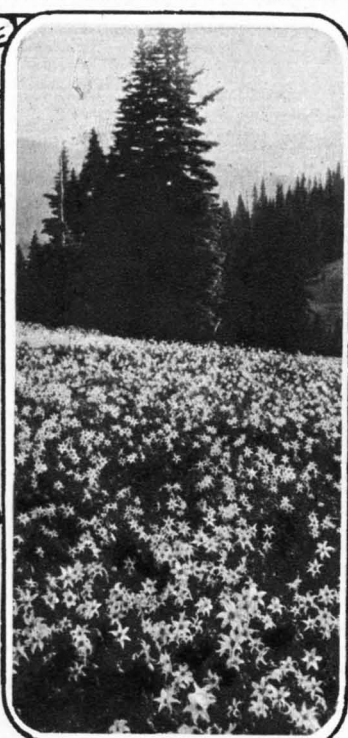
Insert: Comfortable but low to the ground cluster the horse Paradise Valley.



lavender bloom,  
inches high.



Upper—Seed pods of the anemone.  
Lower—Saxifrage.



In Klaptache Park the  
avalanche lilies are spread  
in great white carpets over  
the meadows.



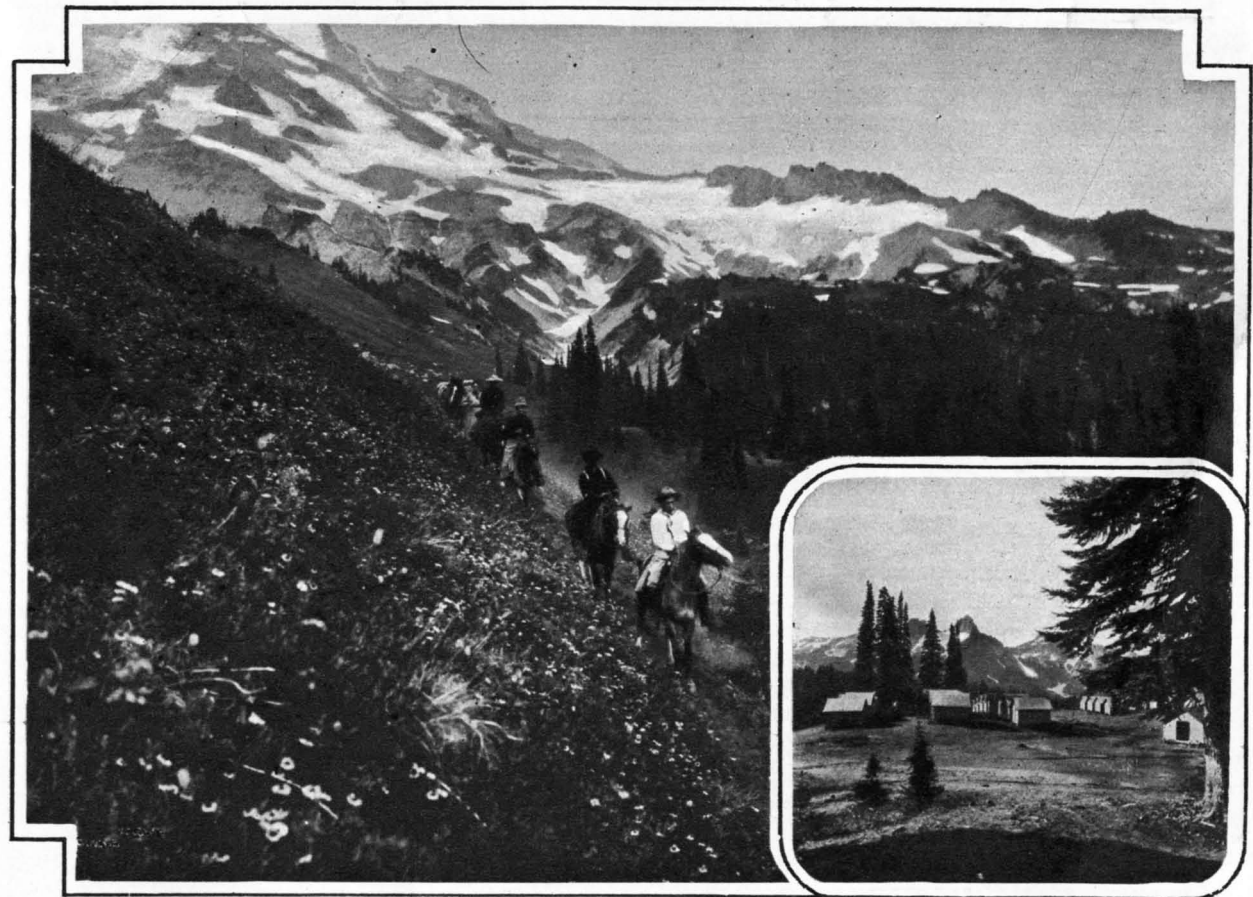
Upper—Lilies coming through  
the snow!  
Lower—Mountain phlox.

ksof the  
Range  
s down  
miniature  
Inn in a  
alley at  
of Rain-  
w fields.

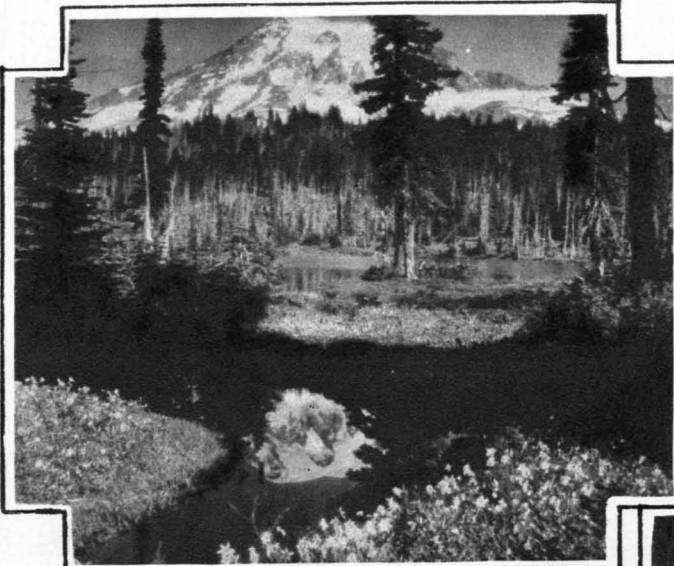
The  
ous  
e of  
dise  
uests  
ight-  
grams  
ances

g the  
rail" is  
e favor-  
tions of  
itors.  
es are  
climb-

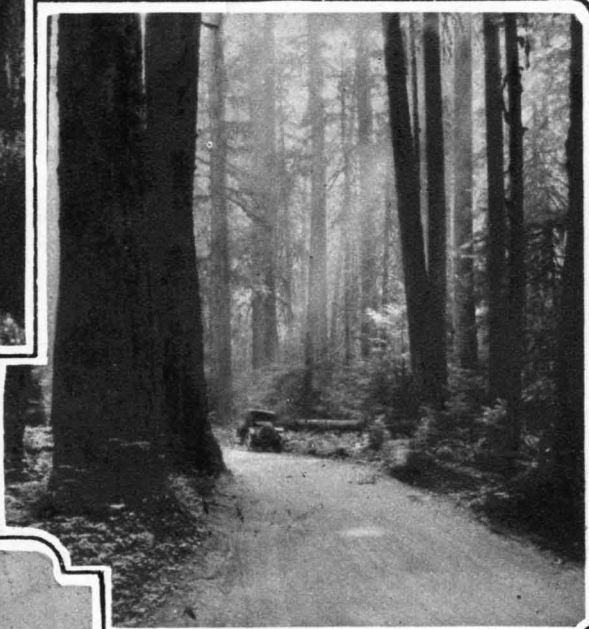
rt:  
ort-  
unga-  
ents  
near  
tel in  
dise







Mount Rainier is mirrored here in Reflection Lake, Paradise Valley. Avalanche lilies are peering in to see the picture.



Giant firs along the road to Paradise Valley dwarf man and automobile to insignificance.



Looking down upon the Tatoosh Range from its higher peaks, the mountaineer is rewarded for his climb by a wide view of sharp mountains piercing a sea of clouds.

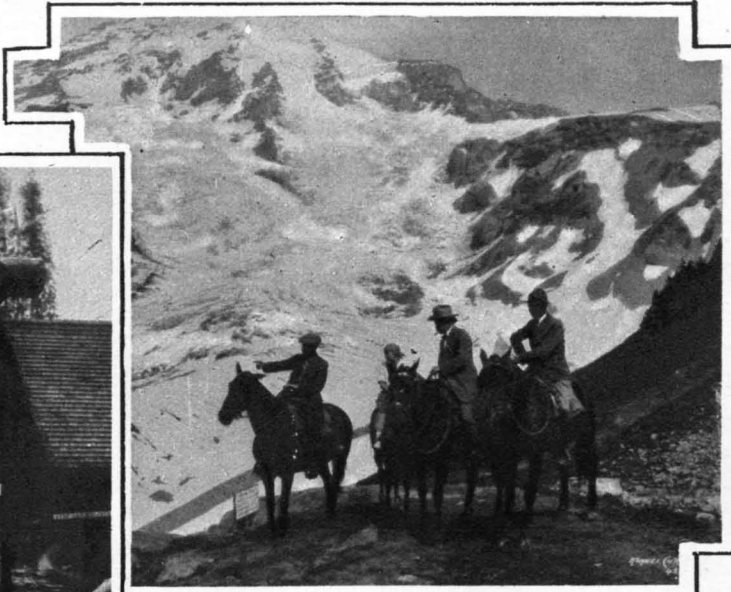


From Pinnacle Peak in the Tatoosh Range, Rainier appears through a veil of clouds. Pinnacle Glacier lies in the foreground.

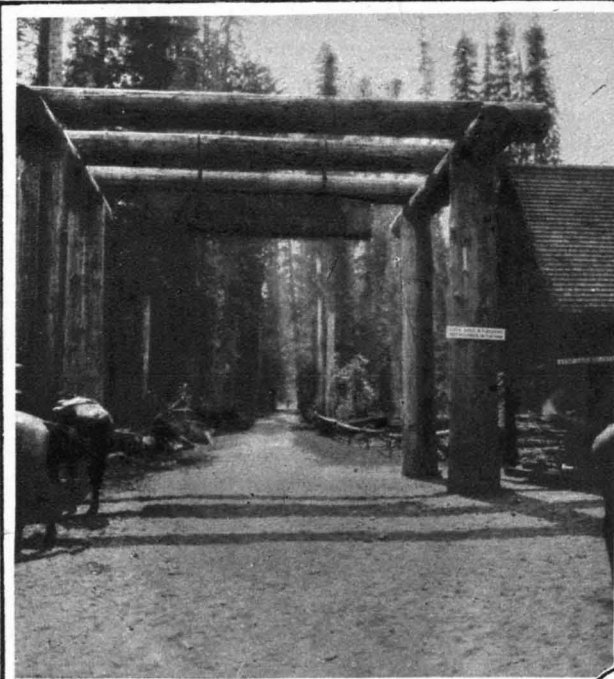




The Skyline Trail winds above Nisqually Glacier.



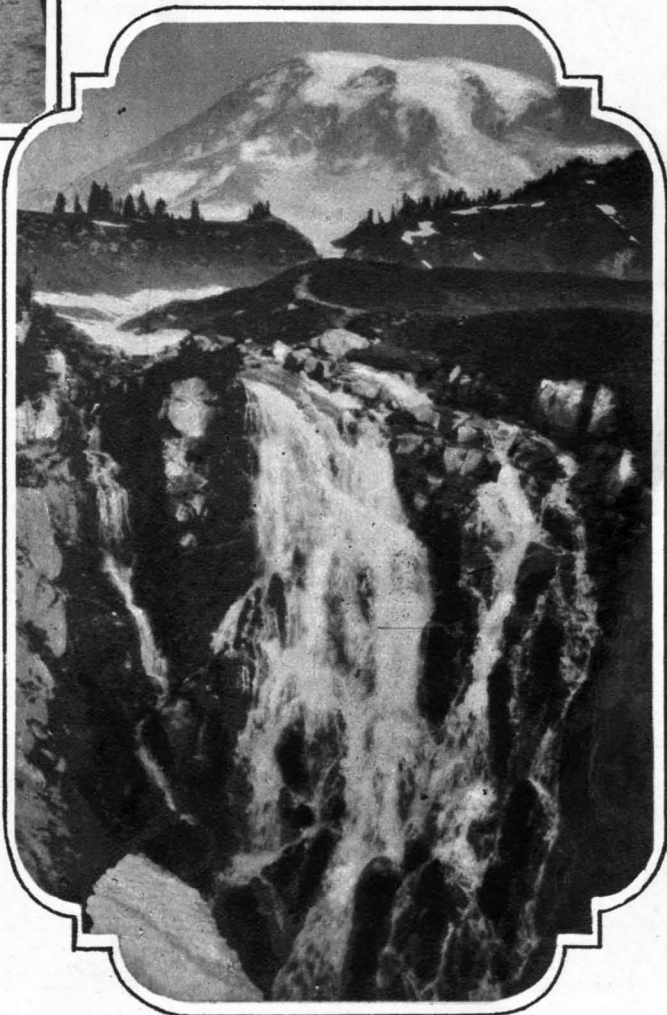
Within the gateway is America's Switzerland!

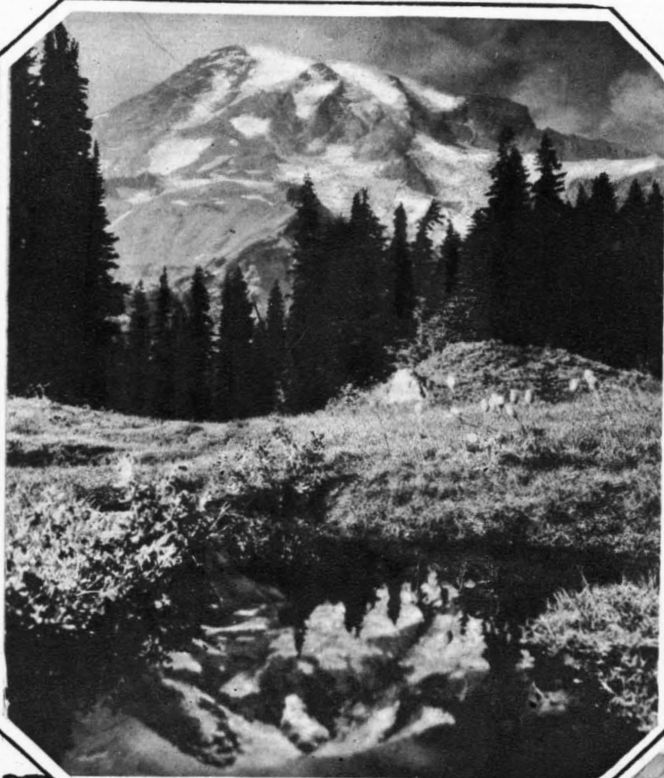


Myrtle Falls is shown issuing from the snow and falling over rocky steps.



Among the crevasses of a glacier many thrills await you! But there is no danger if you mind the guide.





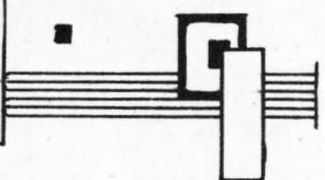
The Mountain shows its heroic profile against the sky and in the water, with a rim of evergreens between.



Cowlitz Glacier is the largest glacier on the southeast side of the mountain. There are twenty-eight glaciers clothing this mighty peak.

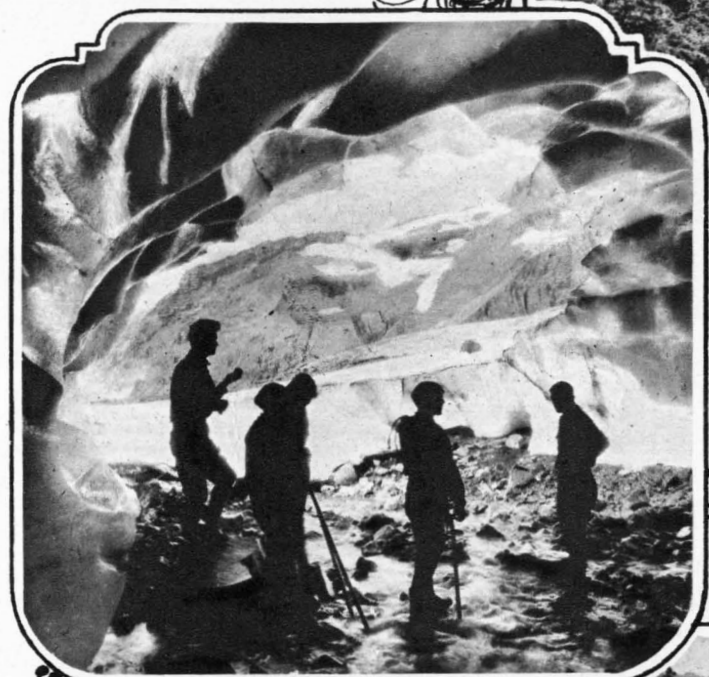
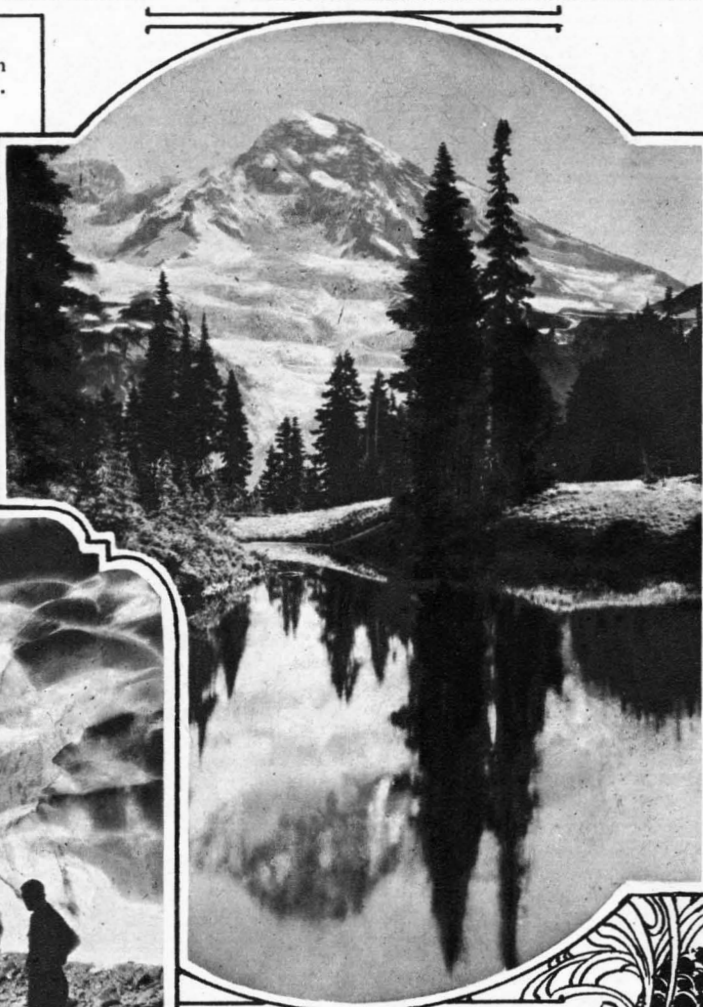


Splendid roads lead to Paradise Inn and back again to Tacoma and Seattle.





Mirror Lake is a clear, placid basin  
which lives up to its name beautifully.



Ice caves in the glaciers are beautiful  
and mysterious. Each year there are  
new ones.

Six ambitious mountain  
climbers are ready to start  
the summit climb, with  
Hans Fuhrer, famous Swiss  
guide.







Nisqually Glacier is the largest one on the south side of the mountain. It is also one of the most interesting to explore.

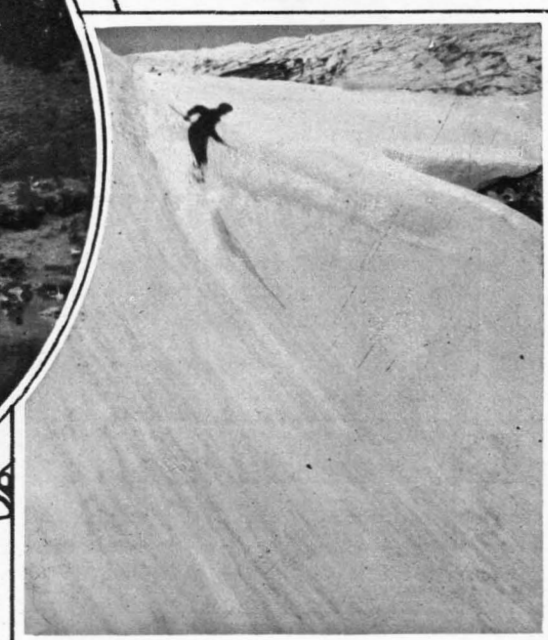


Sluiskin Fall can be seen from far down the mountain. It is named for an Indian chief.

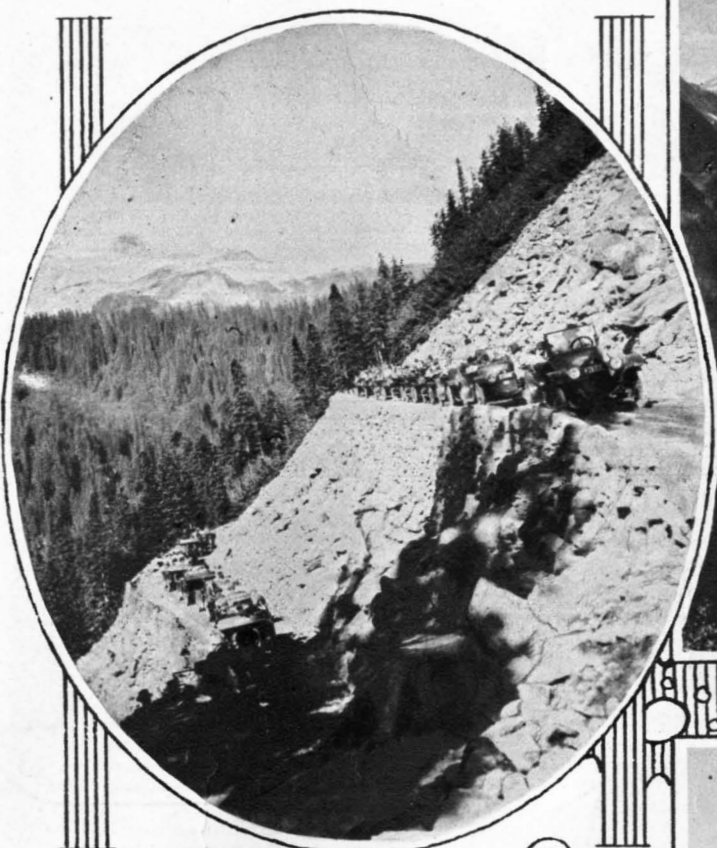


In Upper Moraine Park is a little lake of beautiful color. There are many such green and blue gems where you least expect them.

Skiing and coasting on Paradise Glacier is thrilling sport.



Mount Rainier and the Mowiche Canyon present a marvelous view from Eagle Cliff on the road to Spray Park.



A wonderful automobile road winds around the mountain leading to Paradise Valley.



The Club House at National Park Inn at Longmire Springs, an ideal vacation spot in the park.



It is hard to tell where the snow field ends and the clouds begin. The world seems very far away from a mountain top like this!



