

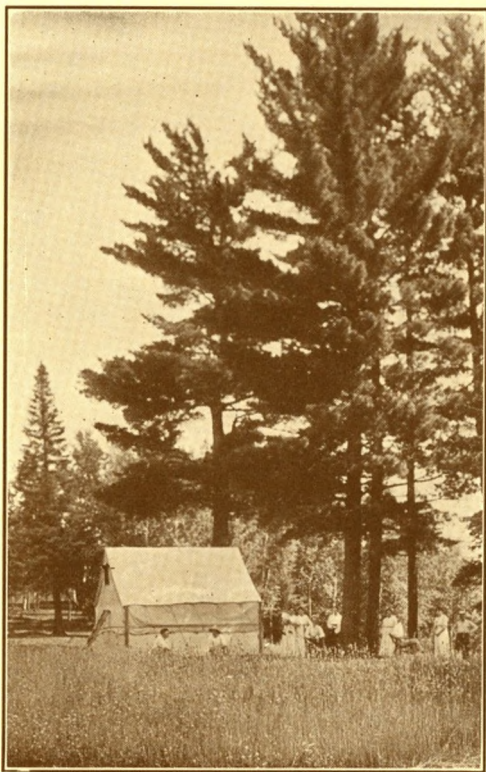
MINNESOTA LAKES



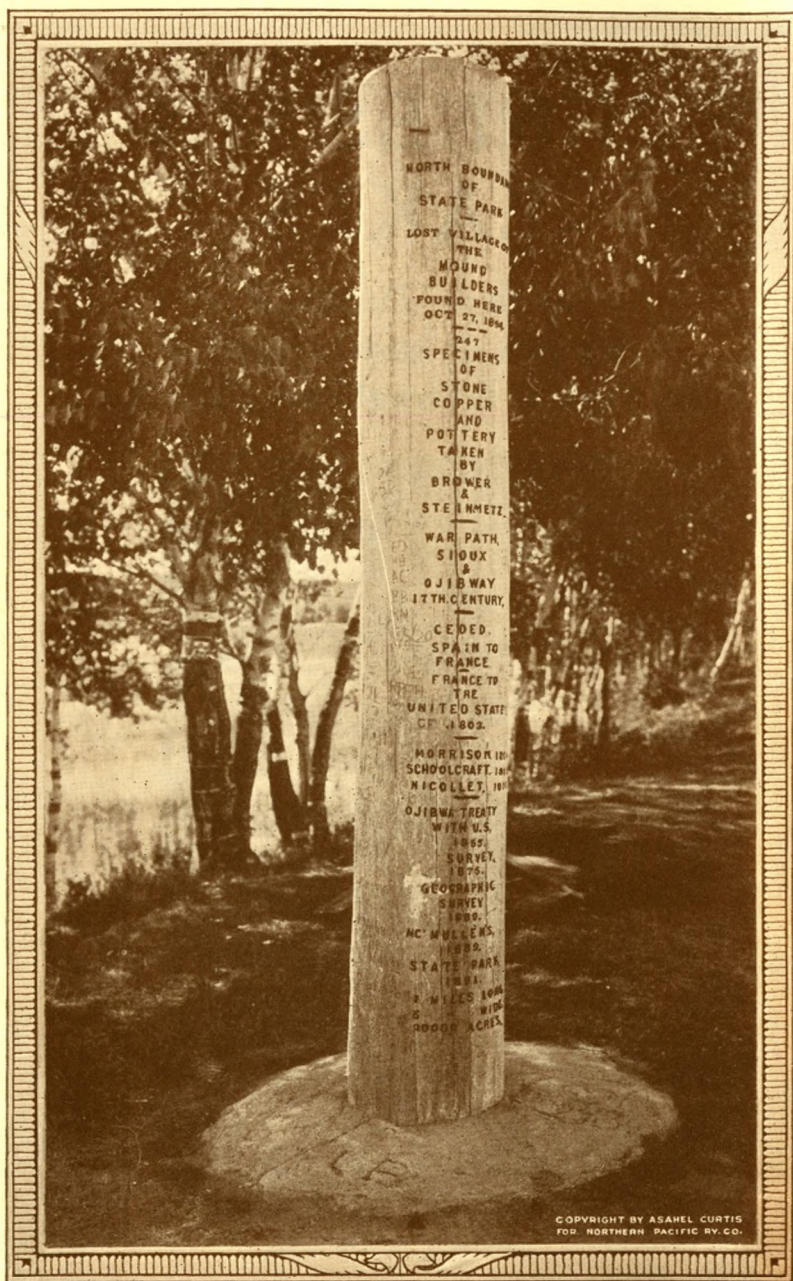
NORTHERN PACIFIC RAILWAY
MINNESOTA & INTERNATIONAL RY.
BIG FORK & INTERNATIONAL FALLS RY.

MINNESOTA LAKES

Northern Pacific Ry.
Minnesota & International Ry.
Big Fork & International Falls Ry.



Camping Among the Pines



Monument, on the Site of the Lost Village of the Mound Builders, at the Lower End of Lake Itasca, Marking Northern Boundary of Itasca State Park. The Park lies southwest of Bemidji, Minn.

Minnesota Lakes and Vacation Resorts

WHEN vacation time approaches and you begin to dream of pine woods, blue lakes, graceful birches, camp-fires and hungry, leaping fish, turn to these pages and decide what part of Minnesota appeals to you most strongly. The name "Minnesota" means "Land of Sky-Tinted water." You will find listed in this book the towns which lie in the heart of the Ten Thousand Lakes region, and under the name of each town the resorts which are to be found in and near it. The Twin Cities of St. Paul and Minneapolis on the Northern Pacific Railway are a most convenient gateway to the Minnesota Vacationland.

The lakes, the game in the vicinity, the rates of each resort or the address from which the rates can be obtained, and other facts about each resort's vacation advantages are given. The rates are not guaranteed, but the information furnished here is the result of a most careful compilation of resort data. Notification of additional resorts or revised data for this listing will be greatly appreciated.

For your convenience, the towns listed, all of which are on the main line of the Northern Pacific Railway, its various branches and allied railways and connecting lines of the lake region, have been named in the order in which they are reached from the St. Paul-Minneapolis Gateway. The map in the center of the book will help you in locating the various resorts.

Choose the district which attracts you most and then have any Northern Pacific Railway representative (the representative that is most convenient for you will be found listed in the back of the book) send you full information about the place of your choice. This is the way to find the ideal vacation you have been wanting. Minneapolis and St. Paul can be reached by rail from the cities shown below in approximately the number of hours indicated:

From Sioux City.....	8 hours.	From St. Joseph.....	16 hours.
From Milwaukee.....	11 hours.	From St. Louis.....	20 hours.
From Chicago.....	12 hours.	From Kansas City.....	18 hours.
From Des Moines.....	9 hours.	From Louisville.....	21 hours.
From Omaha.....	11 hours.	From Memphis.....	26 hours.
From Lincoln.....	13 hours.	From Nashville.....	26 hours.

Elevation and Climate

Minnesota occupies the most elevated plateau between the Mexican Gulf and Hudson Bay, the average elevation being about 1,000 feet above the level of the sea. Fogs and damp weather are almost unknown. The rarefaction and dryness of the atmosphere make the region a very healthful one.

Although there is plenty of warm weather during the summer, the heat is not excessive nor debilitating. Observations conducted at St. Paul show the mean summer temperature to be about 67 degrees. During the hottest days of the season the thermometer registers, on an average, from 85 to 90 degrees. The dryness of the atmosphere prevents the heat from being oppressive; the nights are cool and sleep refreshing. Northern Minnesota offers hay fever relief.

Open Season for Fishing

(Dates Inclusive)

Black Bass—June 15 to March 1.

Trout (Except Lake Trout)—April 15 to September 1.

Lake Trout—November 15 to October 1.

Pickeral, Pike, Muskallonge, Crappies, Sunfish, etc.—May 15 to March 1.

For detailed information send to the State Game and Fish Commission, State Capitol, St. Paul, Minnesota, for copy of laws covering both fishing and hunting.



Resorts on the Main Line of the Northern Pacific Railway

The lakes found in and around St. Paul and Minneapolis offer many delightful resorts, but these are not listed because information can be easily obtained from the Minneapolis Civic and Commerce Association and the St. Paul Association.

Northwest from St. Paul and Minneapolis the Northern Pacific Railway runs through a region noted for its rich farms, its rustic beauty, its lakes and their fish, its woods and their small game.

Anoka

Within 12 miles of Anoka are 10 lakes—fishing is good and the scenery delightful. The Lake George resort, accommodating 100 guests, is reached from Anoka, a distance of 15 miles.

F. E. Tillberg has cottages and boats for rent on Lake George. Cottages and boats may also be secured from Robert S. Hopper at this lake.

Frank Thomas has boats and cottages on Crooked Lake, an attractive, small lake $2\frac{1}{2}$ miles northeast of Anoka. There is good fishing here. John Auguston has other cottages and boats for rent at Crooked Lake.

The Jackson Hotel of Anoka has a bath in connection with each room. It accommodates 60 people at \$2.50 a day and up.

The Third Avenue Hotel of Anoka has rooms for 40 guests at \$2 a day.

Big Lake

The Big Lake Hotel, with rates of \$2 a day, accommodates summer tourists. Eagle, Thompson, Birch, Big and Mitchell Lakes are near by. Bass, pickerel, crappies and pike abound. Good camp sites, cottages and boats are also available through this hotel management.

Furnished cottages, with electric lights, screened porches, oil and cook stoves may be rented from Mrs. Albert Johnson, Box 11, Big Lake. Water is furnished in the houses. Bathing and dancing are popular recreations. Sunfish, bass and crappies are caught in the lake. There is also some duck and squirrel shooting.

Hazelwood Park, on Big Lake, is half a mile from town. Six furnished house-keeping cottages, each accommodating from 2 to 10 persons, may be rented at \$3 to \$6 a day and \$14 to \$25 a week, including rowboat. Ice is extra. Bass, crappies and sunfish are caught in the lake. A good, safe bathing beach is an added attraction. Mrs. F. W. Munger, 3614 Stevens Avenue, Minneapolis, is the proprietor.

Clear Lake

Comfortable accommodations are offered at farms near Clear Lake by the following people: George Larson, Paul Kampa and A. H. Anderson. Here you will find good fishing and opportunity for a healthful, outdoor vacation.

Little Falls

At Little Falls are The Buckman Hotel, accommodating 100 guests, rates \$3.25 a day and \$20 a week, American plan, The Mueller Hotel, rates \$2.50 a day and up, American plan, accommodating 50 guests. The American House, European plan, accommodates 50 guests, rates \$2 to \$2.50 a day and \$8 to \$10.50 a week.

Resorts on Little Falls-Morris Branch

Swanville

Lakes Pepin and Pillsbury are $2\frac{1}{2}$ miles away from Swanville; Bass Lake, 4 miles; Muns Lake, 3 miles; Long Lake, 4 miles and Moose Lake $3\frac{1}{2}$ miles. The Albion Hotel accommodates visitors at \$2 a day, \$7 a week and \$25 a month. Bass, pickerel and pike are caught in the lakes, and boats are available.

John Stroman and Fred Hildebrandt of Swanville have comfortable accommodations for fishermen and other summer guests.



Grey Eagle

Within easy reach of Lakes Birch, Bass, Big Swan, Twin, Long and Mound is the Farview Hotel of Grey Eagle, on Big Birch Lake. A limited number of guests can be accommodated at the hotels and cottages are rented for the summer. Beautiful scenery, excellent bass, pike and crappie fishing, boating, bathing, tennis and dancing make this a popular place for a vacation. Rates are \$3 a day, \$20 a week and \$75 a month for board and room at the hotel. Mrs. G. H. Blackhurst of Grey Eagle will give information about cottage rates, etc. Boats are rented for \$1 a day and \$2.50 a week. Prairie chickens and partridge are hunted in season. The hotel resort is open June 1st to November 1st.

Henry Lambrecht of Grey Eagle has furnished cottages for light housekeeping on good beaches at Big Birch Lake.

Ward Springs

Cottages furnished for vacation parties, guides and boats may be obtained from J. W. Ward of Sauk Center. There are 27 cottages at this attractive resort near Birch and Sylvia Lakes. Pike and bass are plentiful. Rates are \$2 a day, \$12 a week and \$40 a month. Medicinal spring water is a feature of the resort.

Sauk Center

Sauk Lake, Birch, Fairy and Cedar Lakes are in and near Sauk Center. The Palmer House accommodates 80 guests with rates of \$3.25 to \$3.75 a day.

Fairy Lake Resort is 5 miles from Sauk Center. It accommodates 50 guests at rates of \$2.50 to \$3 a day and \$17 to \$20 a week. Pike, bass, pickerel and crappies are caught in the lakes of this region. Furnished cottages are available. The Waldorf Hotel in Sauk Center has rooms for 40 people at rates of \$1.75 a day. Three cottages at the Country Club are rented at \$14 to \$21 a week.

B. F. Dubois, Route 2, has accommodations for summer visitors and will send rates upon application.



White Wings on a Minnesota Lake



Villard

Lakes Villard, Amelia, Leaven and other smaller lakes are about Villard, and the Hotel Villard accommodates visitors. Its rates are \$1.50 a day and \$5 a week. Black bass, pike, pickerel, crappies, perch and sunfish, and good hunting are found here. Launches may be rented.

Glenwood

Glenwood is surrounded by beautiful lakes and is one of Minnesota's favorite resort centers. It is on the shore of Minnewaska Lake, with Lakes Pelican, Villard, Reno, Amelia and Maple near by. There is excellent black bass, pike, pickerel and trout fishing, boating, bathing, and fine scenery. Launches and boats furnished—cottages and guides are all available. Glenwood has famous spring water.

The Parker, New Minton, Lakeside and Rogers Hotels of Glenwood are good commercial hotels, all modern, within a mile of the railroad station. The New Minton has rooms for 60 people and charges \$2.50 a day. It is within 3 blocks of the lake shore, and is a fine, modern hotel. The Rogers and the Lakeside each accommodate 20 people. Their rates are \$2.50 a day.

At Lawrence Point, on Minnewaska Lake, are cottages to rent, 5 miles from Glenwood. A bathing beach and a nearby golf course are added attractions to the fine fishing. Ducks, chickens and partridge are hunted. Cottages of different sizes range from \$20 to \$30 a week and are available from May 15th to November 1st. Myrtle Schnoll of Glenwood is the proprietor.

Minnewaska Health Resort, managed by H. K. Foss, accommodates 150 guests. Cottages are rented in connection with the resort proper. Boating, bathing, tennis, dancing and fishing are popular amusements. Home cooking, with plenty of fish and game in season, has added to the popularity of Minnewaska.

Sunset Beach is a family resort 4 miles from Glenwood on the lake. H. P. Peters, proprietor, offers a choice of rooms at the minimum rate of \$4 a day and \$24 a week to fishing parties from the opening of the pike season May 15th to June 15th. A good beach, spring water, shaded grounds, excellent cooking and every modern convenience needed for comfort is found here. The main building contains a central dining room and 12 sleeping rooms, besides 40 cottage rooms. A 9-hole golf course is conveniently located and tennis courts and evening dances are popular. Rates after June 15th are from \$4 to \$6 a day or \$24 to \$35 a week. Boats are rented for \$1.25 a day or \$3.50 a week. Special arrangements made for children.

Starbuck

At Starbuck, Spatz Camp entertains vacation guests. Rates are \$2 a day. Bass, pickerel and pike are caught in Lake Minnewaska. Gasoline launches, boats, guides and cottages can be had. The Starbuck Land Company rents cottages and boats to summer guests at reasonable rates. There is some good duck shooting in this region in season.

At Rairdin Camp are furnished cottages accommodating 25 guests, and good meals are served.

Morris

The Scandia Lakes and Pomme de Terre Lake are within 10 miles of Morris. Three modern commercial hotels in the city entertain summer guests—the Merchants, La Grand and the Exchange.

Resorts on Main Line—Continued

Cushing

Big Lake and Lake Alexander are near by and the following people can give information about comfortable summer accommodations at reasonable rates: E. M. Jolls, R. F. D. No. 2, Cushing, Minn. (Big Lake); J. P. Anderson and J. B.

Northern Pacific Railway



Larson, R. F. D. No. 1, Cushing, Minn. (Lake Alexander). There are a number of cottages on Lake Alexander. This is good fishing country, not too much frequented, for seclusion and a restful vacation.

Staples

In the city of Staples are three modern hotels: the St. Charles, Fletcher and the National, accommodating 200, 50 and 75 guests respectively.

Summer resorts reached from Staples include Linden Grove, 19 miles, Myers' Place, 15 miles and Hepler's Place, 11 miles from Staples.

Resorts on Staples-Breckenridge Line

Vining

Near Vining are Lakes Villard, Amelia, Leaven and others smaller. There is good fishing and hunting here—bass, pike and other game fish abound. Furnished cottages may be rented for \$1 a day. The Vining Hotel (rates \$2 a day, \$7 a week and \$20 a month) affords a comfortable summer home to vacationists.

A. L. Lund has lakeside accommodations for summer guests one mile from Vining.

Clitheral

Here is a pretty region with Lakes Clitheral, Stewart, West Battle Lake and East Battle Lake all near by, as well as other smaller lakes. Black and small-mouthed bass are caught, with pike, crappies, pickerel and "muskie" for variety. Good duck shooting and fine bathing, launches, guides and cottages help to make it a popular resort country. Lake Clitheral is 4 miles long and a mile wide, with fine beaches. Old Indian battle-fields in this region are worth visiting.

Shoreacres is an attractive summer place, with rates of \$2 a day, \$9 a week and \$28 a month.

Camp Napanee, offering cottages at \$12 a week, is on West Battle Lake, 2 miles from Clitheral. It has 10 cottages furnished for housekeeping, including bedding, linen and silver, with the use of a rowboat (ice extra). Each cottage has a 12 x 20 living room, 10 x 12 kitchen and large screened porch. Open May 1st to November 1st. Jay Stewart of Clitheral is the proprietor. This is an informal family resort.

Camp Nirvana, accommodating 100 people, also offers cottages at \$12 a week. It is 3 miles from the Clitheral station—a beautiful place at which to spend a vacation.

Camp Fernecliff cottages are rented for \$12 a week, furnished for housekeeping. Excellent fishing and all kinds of outdoor fun are offered.

Battle Lake

On the shore of Battle Lake is the town of that name in the midst of the lake park region. Here are a number of fine resorts.

Prospect Inn, with rooms for 100 guests, is only 5 blocks from the railroad station. It has a central building and 5 cottages. Rates are \$3 a day and \$15 a week, with special rates for children of \$1.50 a day and \$10 a week. Bathing, fishing, canoeing and boating are favorite amusements, many guests also enjoy horseback riding. There are always ardent fishermen on the lake catching bass, pike and crappies.

Battle Lake House, half a block from the station, is also on the shore of the lake. It is a year-around hotel, catering to summer tourists, fishermen and hunters—80 guests are accommodated here. Black bass, pike and ducks draw many sportsmen. Rates are \$2.50 a day, \$15 a week and \$50 a month. Children are allowed a half rate. Boats \$1 a day, \$5 a week and \$18 a month. Peter T. Illdold is the proprietor.



Minnesota Lakes

Camp Balmoral, on Otter Tail Lake, is 8 miles from the village. It has a central hotel building and a number of sleeping cottages with 5 housekeeping cottages. All the cottages have screened porches, electric lights and running water. Bathing, motor-boating, dancing, tennis and fishing. Room and board, including a rowboat, are \$3 a day and \$15 a week. Rates for children under 12, \$1.50 a day and \$7.50 a week. Each housekeeping cottage has two rooms and a large porch. These cottages rent for \$40 a month, \$12 a week and \$110 a season, including bedding, silver and rowboat. Auto fare from the station to camp is \$1.50—75 people are accommodated here.

Camp Corliss, on Clitheral Lake, is 3 miles from Battle Lake Station. It accommodates 50 guests, with a central building and sleeping cottages, electric lights and modern conveniences. Dancing, horseback riding, motor-boats, a good bathing beach, free use of boats, pike, bass, muskalonge and pickerel attract vacationists here. Rates are \$2.25 a day, \$12.50 a week and \$50 a month, with half rates for children under 8 years of age. Mrs. Emma L. Marheine of Battle Lake is manager.

Tanglewood and Fairhaven, with daily rates of \$2 and \$2.50, respectively, are two other attractive resorts at Battle Lake. Tanglewood rates are \$12 a week and \$48 a month, at Fairhaven, \$12.50 a week and \$50 a month.

Mrs. A. C. Hatch, Box 384, Battle Lake, offers good accommodations, with excellent home cooking, attractive fishing and swimming facilities.

The Stairns Camp furnished cottages are popular also. Rates at these comfortable cottages are \$2 a day, \$12 a week and \$48 a month.

Underwood

With Lakes Bass, Norway, Turtle, Annie, Stocker and Long close by, Underwood is an attractive place for a vacation. The Underwood Hotel charges \$2 a day, \$6.50 a week and \$25 a month. Cottages on the shores of Turtle Lake may be rented from Gustav Rolfson of Underwood. Black bass, pike, pickerel, crappies and sunfish are caught in the lakes about Underwood and there is good duck hunting.

Fergus Falls

In and near Fergus Falls vacationists find a delightful region for summer pleasures. The Hotel Kaddatz, a modern, first-class hotel, accommodating 300 people, operates on the European plan. Its rates are \$1.50 a day and up. Rates at Christiana Hotel, with rooms for 75 guests, and the Brenden, accommodating 25, are \$1 a day, also on the European plan. The Park Hotel is operated on the American plan.

Cottages may be rented at Berge's point (R. 4) and at Idledale Park.

Within easy reach of the town are Lakes Wall, Jewett, Swan, Ten-Mile, Fish, Long, Stalker, Norway, Oscar and South Turtle. Black bass, pike, pickerel, perch and other fish are plentiful. Partridge, duck and prairie chicken shooting about Fergus Falls is good in season. Boats can be rented for 50 cents to \$1 a day.

At Pelican Rapids, within 10 miles of Fergus Falls, is Dunn's Summer Lodge, a fine resort, accommodating 125 guests, \$3.50 to \$5 a day and \$21 to \$35 a week, with rowboat; Oak Lodge with rooms for 75, rates \$3 a day and \$18 a week, half rates for children; Clearview Resort, accommodating 50 people, at \$2.75 a day and \$15 a week; Maple Beach Resort for 15 people, at daily rates of \$2.50 and weekly rates of \$14 and Strand's Resort, which can accommodate 30 guests. At any of these places summer guests are comfortably cared for.

Resorts on Main Line—Continued

Verndale

On third Crow Wing Lake, at the head of Crow Wing River, 42 miles north of Verndale, is a fine place for a secluded outdoor vacation among the pine trees and connected lakes. It is managed by A. N. Rosenberg of Nevis, Minn., R. F. D. Fishing is good and there are plenty of boats.



Perham

Here are numerous charming lakes: Little Pine, 1½ miles; Big Pine, 2 miles; Little McDonald, 7 miles; Marion, 7 miles; Devils Lake and others. Pike, black bass, pickerel and other fish are plentiful.

The Van Deventer Hotel, on Little Pine Lake, has rates of \$3 daily and \$18 weekly and offers cottages (with gas, telephone and running water) at \$60 a month.

Eagle's Nest, on Marion Lake, charges \$3 a day and \$18 a week.

Grand View Heights, on Big Pine Lake, \$3.50 a day at the hotel, \$25 a week in furnished cottages, is a beautiful resort. G. E. Bowen is the manager—150 guests are accommodated in the hotel and in cottages. Boating, bathing, tennis, golf, trap-shooting and dancing are popular, as well as fishing. Special rates by the week and month.

Webster's Inn, on Dead Lake, charges \$2 a day and \$10 a week. Pleasure Beach Inn, accommodating 50 guests, charges \$2.50 by the day and \$15 by the week.

Sunny Beach Resort, Hermans' Resort and Evergreen Beach are also reached from Perham and are comfortable places for vacationing.

Henry Zitzow, J. Dertinger and Carl Herman of Perham can give information about accommodations on McDonald and Big Pine Lakes.

Frazee

In the midst of the lake region, with Lakes Graham, Murphy, Weymer, Long, Cotton, Rose, Herold and Lakes 5 and 6 near by. Black and rock bass, pike, pickerel and fine muskalonge are plentiful.

The Windsor Hotel, operated on the American plan, has 20 rooms, rates \$2.50 a day, \$9 a week and \$40 a month. Good small-game hunting and fishing. Guides are available.

Detroit

Detroit is in the center of the Lake Park Region. Twenty lakes are within a 2-hour drive of the city, which has a population of 4,500. The Detroit Country Club offers the privileges of its club houses and 18-hole golf course to summer visitors. Small-mouth and big-mouth bass, crappies, pike and pickerel are caught in Detroit Lake, Lakes Floyd, Monson, Sallie, Melissa, Eunice, Pelican, Cormorant and several others.

The Graystone Hotel, a first-class, modern hotel, has rooms from \$1.50 to \$2.50 a day. It caters, especially, to automobile parties and arranges tours to nearby places—150 guests are accommodated. Only ½ block from the N. P. Station.

The Rice Hotel accommodates 36 guests at \$1 a day and up.

The Colonial Hotel has rooms for 50 at \$1 a day.

The Shoreham Inn, 125 guests, H. O. Burritt, proprietor, is 6 miles from Detroit between Lakes Melissa and Sally. It charges \$4 a day and up and \$22 a week and up. Cottages are also rented and a large dining pavilion is popular.

Pettibone Lodge, between Lakes Sally and Melissa, accommodates 175 guests. Geo. T. Pettibone is the manager and owner. The main building and cottages are grouped on electric-lighted grounds. Tennis and an 18-hole golf course, a large dance pavilion, fishing, bathing and boating entertain the guests. This resort has an excellent cuisine. Season May 15th to September 15th. Rates are \$4.50 a day and \$25 a week.

Fair Hills, on Pelican Lake, is 13 miles from Detroit. The hotel and a number of 2- and 3-room cottages accommodate 150 guests. Tennis, horseback riding, dancing, motor-boating, bathing on a good beach and fishing are popular. A golf course is 6 miles away. Rates are \$3.50 a day and \$21 a week. Half rates for children under 8. Boats are \$1 a day and \$5 a week. The season is May 15th to September 15th. Harry B. Wiley, proprietor, Detroit.



Minnesota Lakes

Pelican Inn, T. J. Cannon, proprietor, is between Big and Little Pelican Lakes. Boating, bathing, tennis, baseball and good fishing attract guests here. Large, cool rooms, accommodating 65 guests, are available at rates of \$2.50 a day and \$15 a week and up.

Park Hill Resort, on Lake Sally, has furnished cottages and a fine beach. Charles Nelson is the proprietor. The season is June 1st to September 1st and rates are furnished upon application.

Cotton Lake Camp, with rates of \$2.50 a day and \$15 a week; Fairhaven Resort, accommodating 100 guests at \$3 a day and \$14 a week and up; Dunn's Resort (rates \$3 a day and \$21 a week) and John K. West's furnished cottages for sale or rent at Dakotah beach also accommodate large numbers of summer tourists.

The New Park Hotel, on Detroit Lake, 1 mile from Detroit, offers golf, tennis, dancing, horseback riding, motor-boating, bathing, and pike and bass fishing. Its rates are \$3 a day, \$15 a week and up, with special rates for children. Boats are rented at \$1 a day and \$3 a week. It is open until October 1st. H. P. Woodhouse, Detroit, is the proprietor.

Fairhaven Resort accommodates 100 guests at \$3 a day and \$14 a week.

Thomas Bridges, J. C. Brink, John Stearns, Ivan Stearns and Gray Brothers also have accommodations for fishermen and other summer guests and will send rates upon application.

Lake Park

At Lake Park is the Lake Park Hotel, with Lake Cormorant (6 miles distant), Lake Pelican (8 miles) and Lake Stoke (2 miles). Bass, muskalonge and other game fish are plentiful. Good hunting is found here, and guides are available. Rates at the hotel are \$1.25 a day, \$7 a week and \$25 a month.



Minnesota Resorts Are More Than Comfortable



Hawley

The Cameron Hotel and the City Hotel at Hawley accommodate summer guests—La Belle, Silver and Lea Lakes are near by. Pickerel, pike, bass and perch tempt fishermen at these lakes—all within 3 miles of town. Rates are \$2.50 and \$3 a day.

Resorts on Red Lake Falls Line

Tilden Junction

Dugdale, reached from Tilden Junction, is 6 miles from Maple Bay, a popular summer resort, where perch, pickerel, pike and other game fish are caught. Duck and chicken shooting in season is good. Guides are available. The Arcade Hotel, of Dugdale, has reasonable rates and accommodations for summer tourists.

Red Lake Falls

This resort is on the Clearwater and Red Lake rivers, with Maple Lake 14 miles away. Swimming in the river is popular. The Lincoln Hotel, of Red Lake Falls, is operated on the European plan, accommodations for 50 guests at \$1.25 a day and up.

Resorts on Duluth-Superior Short Line

White Bear

On beautiful White Bear Lake, 12 miles from St. Paul, are many summer cottages. Other lakes in the vicinity include Bald Eagle, Pine Tree and the Four Lakes Chain. Pike, pickerel, bass and crappies are caught.

Lake Shore Inn, near the village of White Bear, accommodates 50 guests, at rates of \$3 to \$5 a day, and half rates for children. Rowboats are free. A large, open air dining room overlooks the lake, and 25 of the bedrooms are outside rooms. There is also a large sleeping porch. Charles Bennett is the proprietor.

Stillwater

(On Northern Pacific Branch Line from White Bear)

Stillwater is on the beautiful St. Croix River, with Lakes Elmo, Carnelian, Big and Bass not far away. Fishing is good, with trout, bass, pike and pickerel to especially tempt sportsmen. The Elliott, Pitman House and Northwestern Hotels accommodate vacation visitors at Stillwater. Canoes can be rented at Mueller's boathouse.

Bald Eagle

On Bald Eagle Lake, the village of Bald Eagle, named for birds which once lived on a small island in the lake, is well known for its vacation advantages.

The Spring Park Villa Hotel on the lake accommodates 70 people. Cottages with screened-in sleeping porches and housekeeping cottages may be rented from the hotel management. An 18-hole golf course, tennis, dancing, horseback riding, motor-boating and bathing are attractions of the resort, and fishing is good. Board and room costs \$3.50 a day and up, or \$15 a week and up. Children's rates are \$1.50 a day or \$7 a week. Cottages completely furnished for housekeeping are rented for \$5 a day and up or \$12 a week and up. Boats are also rented. The season lasts from June 1st to September 15th. Mrs. M. D. Miller is the proprietor. She may be addressed at the White Bear Lake post office.



Forest Lake

The town of Forest Lake is located on Forest Lake, with Clear Lake, Big Lake and Doctor's Lake near by. Bass, pike, pickerel and trout fishing, and there is also some small game hunting.

The Commercial Hotel, a block from the railroad station on the shore of the lake, accommodates 50 guests. It is a modern hotel, rates \$2.50 a day and up or \$15 a week and up. Three fully equipped cottages for light housekeeping, with running water and electric lights, are also rented by the hotel management. G. S. Finnegan, of Forest Lake, is the proprietor.

The Windsor Hotel of Forest Lake has rates of \$1.50 a day, \$5 a week and \$20 a month.

Resorts on Wyoming-Taylor's Falls Branch

Chisago City

Beside Chisago Lake, tourists at Chisago City enjoy Green, Perch, Sunrise and Big Lakes. This is a beautiful resort region.

Dahl's House, on Chisago Lake, has a central lodge and sleeping cottages. It is modern and well managed. A social hostess has charge of a children's playground, story-telling hour, and all outdoor and water sports. Water tobogganing, saddle-horses, tennis, croquet, horseshoe tourneys, hiking, radio concerts, motion pictures, dancing and fishing are attractions. Three hundred guests are accommodated here. Wm. C. Riefel of Chisago City is the manager. Rates sent on request.

The Russell Beach Summer Resort, on Chisago Lake, offers cottages and a club dining room. There is a fine, sandy beach here. Sixty people can be accommodated and the rates are \$3 a day and \$14 a week. Ed. A. Bloom, proprietor.

Green Lake Summer Resort is on both Green and Chisago Lakes, 2 blocks from the railroad station—120 guests are accommodated. There is a central dining room and cottages are rented either in connection with this dining room, or separately—board and room \$2.50 a day and \$15 a week, with half rates for children. Housekeeping cottages are \$14 to \$20 a week. The resort is open May 15th to October 1st. M. A. Stromberg is the proprietor.

Squirrel's Nest Point is an attractive and comfortable resort.

At Schlemmer's Island guests are entertained at \$2 a day and \$12 a week.

Lindstrom

Near Chisago, Green, Sun, Big and Rice Lakes is the town of Lindstrom, where numerous cottages and tourist hotels are located. Fine fishing and delightful scenery attract scores of vacation seekers each season.

The Peninsula Hotel, with accommodations for 100 guests (in the hotel and in sleeping cottages), is on Lake Chisago, one block from the railroad station. Its rates are \$2.50 a day and \$14 a week, with half rates for children under 10 years of age. Boats are rented for \$1 a day and \$3 a week. Swimming, fishing and tennis facilities are good. This resort is open all year. C. O. Aker of Lindstrom is proprietor.

Willoughby Cottages, on Chisago Lake, are 3 blocks from the station, with a good bathing beach and fine fishing as attractions. There are housekeeping cottages at rates of \$15 to \$21 a week. The season is June 1st to August 31st. Duck hunting is good in the fall. W. W. Willoughby is the proprietor. He can be addressed at Lindstrom—100 guests can be accommodated.

Villa Cape Horn, with rooms for 100 guests, is one-quarter of a mile from the railroad station. Its rates are \$3 a day and up and \$14 a week. Furnished cottages for housekeeping may be rented here on the shores of Lake Chisago. Electric lights and modern conveniences are provided. Fresh eggs and milk can be obtained on the place. J. A. Nelson is the proprietor.



Squirrel Beach is on Lake Chisago at Russell beach station. Cottages are available here and an excellent main dining room. Good boating and bathing facilities. P. G. Nelson, proprietor, will furnish rates upon request.

Good meals may be had at the following places by those who rent cottages near Lindstrom: Sunnyside Inn, and the homes of J. E. Kline, C. G. Nelson, Edward Bloom, F. O. Lindstrom and J. C. Weyh.

At all of the Lindstrom resorts, fishermen will find bass, crappies, pike and pickerel.

Center City

Chisago and a chain of other beautiful lakes surround Center City. Game fish abound and bass fishing is especially good. The alluring Dalles of the St. Croix are only 9 miles distant, and the whole region is delightful.

Dew Drop Inn, with housekeeping cottages for rent and a dining room where cottagers may enjoy delicious meals, is managed by F. N. Benson of Center City. It is about halfway between Center City and Lindstrom.

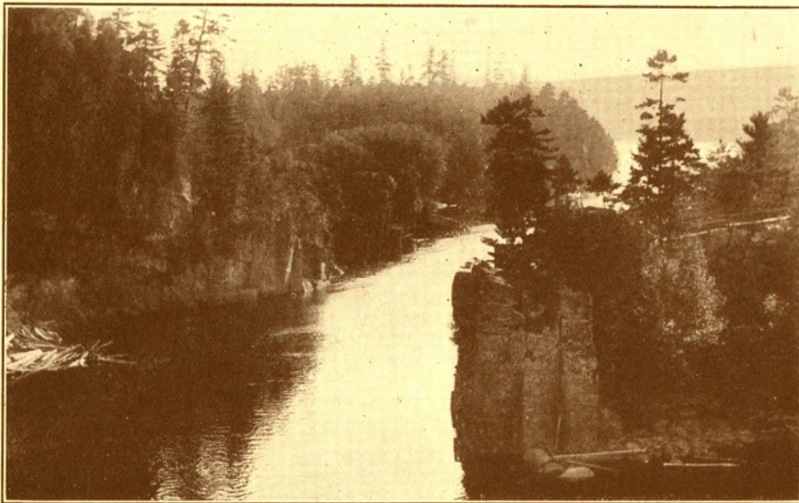
The Park Island Hotel, one-quarter mile from the railroad station, and on Chisago Lake, accommodates 100 guests, rates \$2.50 a day and \$12 a week. It is possible to stay in either the hotel or a cottage at this resort. Fishing, boating and bathing. A. L. Jonason, proprietor.

The McLeod boarding house of Center City will give rates upon request.

Taylor's Falls

With the famous Dalles of the St. Croix River and the Interstate Park as unusual scenic attractions, this town draws hundreds of summer visitors every year. Launches and canoes can be rented for trips on the St. Croix, trout, bass and pike are caught in the nearby lakes and streams (Balsam, Bass, Deer and Poplar Lakes) and the resort accommodations are good.

Mrs. J. Campbell and Mrs. Ella Fredeen oftentimes have attractive rooms for summer visitors.



The St. Croix River and Dalles at Taylor's Falls



Minnesota Lakes

The Park Hotel is a modern commercial hotel near the entrance to Interstate Park. The Taylor Place is a comfortable, home-like resort in the residence section facing the river. Excellent meals and attractive surroundings. It has accommodations for 100 people. Rates are \$3 a day and \$14 a week.

King Tut Inn has a dining and dance pavilion overlooking the St. Croix, Mr. and Mrs. Charles Angle are proprietors. Lunches are served here at all hours.

Resorts on Duluth-Superior Short Line—Cont'd Harris

Fish Lake and Horseshoe Lake are near by, offering good fishing and all kinds of outdoor sport. Pete Erickson (R. F. D., Harris) has tourist accommodations on Fish Lake and L. A. Bloomster (R. F. D. 1, Harris) on Chain Lake.

Rush City

The St. Croix River is 5 miles east of Rush City, Rush Lake is 3 miles from the town and Goose Lake, 8 miles. Pike, pickerel, bass and other game fish here.

Grant House is a commercial hotel, accommodating 75 guests, two blocks from the station. Its rates are \$2.50 a day and \$14 a week.

Eight furnished cottages are for rent by Ed Weber of Rush City from May 15th on through the hunting season. They are located on Rush Lake where pike, bass, sunfish and ducks are plentiful, \$18 a week is the rate, with an auto fare of \$2 from Rush City.

The Scheele Brothers' Farm Home is another comfortable resort on Rush Lake, which will send rates upon application.

Grantsburg, Wis.

(On Grantsburg Branch)

With Lakes Mud Hen, Wood, Spirit and Trade near by, this town offers fishermen good sport with black bass, pike and pickerel. Within 4 miles of town is the St. Croix River, offering muskalonge fishing. The hotels Olson and Norine have rates of \$1.50 a day and \$7.50 a week.

Pine City

Between two beautiful lakes, Pokegama and Cross Lake, and located on the Snake River, Pine City stands where an old Indian Village once stood named "Chengwatana", of which the present name is a translation. Squaggee and Devils Lakes are not far away; pike, bass, pickerel, perch and crappies abound.

The Agnes Hotel is a commercial and tourist hotel operated all year on the American plan with cafe in connection. Rates are \$1.25 to \$1.50 a day. It is one block from the boat landing. This is a modern, convenient hotel, managed by Otto Ingram.

The Island Hotel, on Lake Pokegama, 6 miles from Pine City, has accommodations for 75 guests. Six sleeping cottages are operated in connection with the hotel. Bathing, fishing and hunting for small game are favorite sports. Rates are \$3 a day, \$20 a week, with half price for children under 10 years of age. The season lasts from June 1st to October 1st. Dr. H. T. Eachus of Pine City is the proprietor.

Tangner's cottages, on Lake Pokegama, are rented at \$14 a week with board. Boats are available. This is a beautiful vacation spot.

Finlayson

Finlayson is surrounded by lakes—Big Pine, Elbow, Fish, Upper and Lower Pine, Big and Little Bass, Indian, Rhine and Lake St. John among them. Two hotels in the town provide accommodations for tourists at \$2 a day, \$5 a week and \$20 a month—the Adalbert and the City Hotels. Cottages may be rented

Northern Pacific Railway



at Big Pine Lake also. Boats and guides are available in this region. Black bass, pike and other game fish. At Pine Lake, 7 miles from Finlayson, Mrs. Harty conducts an attractive resort.

Moose Lake

With Moose Lake, Moose Horn Lake, Coffee, Pickerel, Sand, Sturgeon and Island Lakes all within 4 miles of the town, this is a fine place for a summer vacation. Bass, pike, pickerel, perch, crappies and sunfish are plentiful. Launches and boats may be rented. The Moose Hotel and Elm Tree Hotel have rates of from \$2.50 to \$3 a day, \$12 to \$15 a week and \$35 to \$40 a month.

Barnum

Bear Lake, Big Lake, Hanging Horn and Lake "29" are all near Barnum, and bass, pike, pickerel and other game fish are plentiful. At the Barnum Hotel the rates are \$2.70 a day. It is 3 blocks from the station.

Carlton

Carlton is on the St. Louis River near Jay Cooke State Park. Chub Lake, Otter, Silver and Black Hoof Creeks and Midway River are all near, and bass, pike and brook trout challenge fishermen to spend their vacations in this region. All the trout brooks are within 7 miles of town.

The McFalls Hotel has rates of \$1 a day and up.

Cloquet

Resorts on the Carlton-Cloquet Branch

Cloquet is on the St. Louis River with Big Lake, Chub Lake and Grand Lake within 10 miles. Jay Cooke Park is another attraction. The Solen Hotel has steam heat, electric lights and running water.

Duluth and Superior

Resorts and hotels in and near Duluth and Superior are not listed because of their large number. The Chamber of Commerce in each city will gladly furnish information about them. Resorts along the north shore of Lake Superior, detailed later, are in a district which affords relief to many hay fever sufferers.

Resorts on the Duluth-Staples Line

Cromwell

Island Lake, Eagle, Cross and Woodbury Lakes are near Cromwell, and black bass, pike, perch and pickerel are caught here. Boats, guides and launches may be rented. Small game hunting. The Lenox and the Violet Hotels receive tourists. J. H. Wright, W. W. Wright, Tony Kupferer and Ben Pippin can give information about comfortable places at which summer guests may find room and board and good fishing.

Tamarack

Round Lake is 4 miles from Tamarack; Nelson Lake, 2 miles; Birch Lake, 2 miles, and Lake Minnewawa $7\frac{1}{2}$ miles. Big Sandy Lake is within 11 miles of the town. This is both a good fishing and a good hunting region. Black bass, pike, pickerel, sunfish and crappies are plentiful, and there are both large and small game.

Lake Minnewawa Retreat, on Lake Minnewawa, is a beautiful resort with a central lodge and sleeping cottages, accommodating 75 guests. Fishing, boating and bathing, dancing and tennis keep summer guests busy here. The resort is surrounded by pine woods. Rates are moderate. Smith and McClement are the managers, and information may be secured also from Tingdale Bros., 433 Metropolitan Bank Bldg., Minneapolis.



Minnesota Lakes

Other resorts on the east side of Lake Minnewawa (to be addressed at Tamarack, Minnesota) are Breezy Rest Lodge (25 guests) and Sheshebe Inn. Rates vary from \$18 to \$25 a week. The region is an alluring one for vacationists.

McGregor

Lakes Minnewawa and Sandy are from 8 to 10 miles from McGregor, and Bass Lake, Round Lake and Rice Lake are within a few miles. Black bass and pike fishing is excellent, and pickerel, crappies, muskallonge and trout are also caught. Duck, chicken and deer hunting in season bring many sportsmen here.

In addition to the chain of lakes, there are the Sandy, Mississippi, Rice, Savannah and Prairie Rivers in this region.

In McGregor is the Hotel Sugrue, with E. J. Sugrue, proprietor.

Between Sandy Lake and Lake Minnewawa is Indian Portage, where the Theo. Micke Hotel and C. W. Bowsfield's Hotel are open to guests. On Indian Point, at Sandy Lake, Indian Point Lodge offers a charming place for a summer vacation. Rates are \$4 a day and \$25 a week. Half rates for children under 10 years. Le Baron and Fortune of Tamarack are the proprietors.

H. J. Steen manages a summer resort on Bellhorn Bay, Sandy Lake, and on the west side of Sandy Lake are Wotring's Resort (C. O. Wotring, proprietor) and Dew Drop Inn (A. W. Weber, proprietor).

Log cabins on Bellhorn Bay, Sandy Lake, may be rented through the Ecklund Brothers, W. F. Henning and H. G. Steen, of McGregor. Cottages are available on the west side of Sandy Lake at Ridge Park (G. W. Mattoon, proprietor) and at Wotring's Resort (C. O. Wotring, proprietor). Neil McKay at Libby, Minnesota, also has cottages to rent at this place.

Aitkin

Aitkin is on the Mississippi River and has 12 lakes within a radius of from 2 to 16 miles. Black and small-mouth bass, pike, pickerel, crappies and muskallonge are caught in the lakes of the region, which include Hanking, Kettle, Pine and Cedar.

Aitkin hotels are the Willard and the Foley, both operated on the American plan.

Shingwauk Inn, on Pine Lake, south of Aitkin, has furnished housekeeping cottages accommodating from 6 to 12 persons each, \$15 to \$20 a week is charged and the use of a rowboat is included in the rates for each cottage. Guests must furnish their own linen. The resort has a motor-boat. Shingwauk Inn is open from May 1st to November 1st. MacGregor-Holcomb Company of Aitkin is the proprietor.

Fred Halbkat and August Elling of Route 2, Aitkin, have comfortable farm accommodations for vacation guests. Rates are reasonable.

Lewis Guinther (P. O. Waldec, Minn.) and Fred Nichols (P. O. Nichols, Minn.) also have accommodations for summer vacationists in this locality.

Bay Park, on Cedar Lake, accommodates 50 guests, rates \$3.50 a day and \$20 a week.

Waldheim, on Hickory Lake, is 8 miles from Aitkin. Three new, completely furnished housekeeping cottages have 4 rooms each with sleeping porch, screens and awnings. They rent for \$60 a month. Rowboats, silver, linen and bedding are included in the rates. Fruit, vegetables, milk and eggs may be secured at nearby farms. Safe bathing beach, good fishing and hunting for ducks and other birds in season. Fred C. Hicks, Aitkin, is the proprietor.

Deerwood

Within 3 miles of this resort are 30 lakes, and within 12 miles are 100 lakes, including Mille Lacs, Serpent, Reno and Bay Lakes. Hay fever relief. It is a very interesting locality, as well as a beautiful one, for the old trail and portage

Northern Pacific Railway



used by the Indians traveling from the Upper Mississippi River to Mille Lacs Lake passes through Deerwood. Black bass, pike, crappies, pickerel and an occasional muskalonge are caught in the waters around the town. There is a State Fish Hatchery at Deerwood. Guides may be hired for \$2 a day.

Shannon Inn, half a block from the Northern Pacific station, has accommodations for 75 people, rates \$1.75 a day and up. E. F. Whiton is the proprietor. This inn has outside rooms only.

Ruttger's Bay Lake Resort, 5½ miles from the station, accommodates 100 guests, rates \$3.50 a day or \$21 a week. It has a large log dining room and screened and curtained bungalows for sleeping on the shore of the lake. All are electrically lighted. Golf, tennis, dancing, horseback riding and motor-boating are popular. Swimming (with a big water toboggan slide as a popular feature), and fishing for bass, pike and crappies, with small game hunting, as an additional attraction, add to the pleasure of vacationists here. Rates are \$3.50 a day and \$18 and \$21 a week, with half rates for children under 8. A. J. Ruttger, Deerwood, is the proprietor. Mr. Ruttger also has a 4-room housekeeping cottage on a 14-acre peninsula.

Nokikoming Lodge, 4 blocks from the railroad station, has accommodations for 25 guests, rates \$3.25 a day. A pleasant place in which to stay.

The Oaks, 6 miles from Deerwood, accommodates 50 guests, rates \$3.50 a day and \$18 to \$24 a week. Auto fare to the Oaks from Deerwood is \$2. Two housekeeping cottages on Indian Point are rented in addition to the hotel rooms. Airy rooms, good beds, gas lighting, and good facilities for bathing, motor-boating, billiards and tennis are offered by this hotel. Bass, muskalonge, ducks and other small game in season attract sportsmen.

Board and room rates for children are \$2.75 a day and \$15 to \$18 a week. Housekeeping cottages with 2 or 6 rooms are rented at \$20 to \$30 a week, including ice, bedding and silver. The season is May 1st to October 1st. Mrs. A. L. Miller, Deerwood, Route 1, is the proprietor.

Linden Place, 8 miles from Deerwood, accommodates 25 guests at \$3 a day and \$18 a week.

Sissegamamah Lodge, 6 miles from the station, has accommodations for 30 guests. It is on Bay Lake. There is a main lodge with sleeping porches and a double cottage with running water. Black bass, pike and crappies are caught in the lake, and there is good small game hunting in the vicinity. Rates are \$3 a day and \$18 a week, with special rates for children, and rowboats are rented at \$1 a day or \$4.50 a week. The lodge is open May 1st to November 1st. Emery G. and Marjorie A. Fuller, Deerwood, are the proprietors.

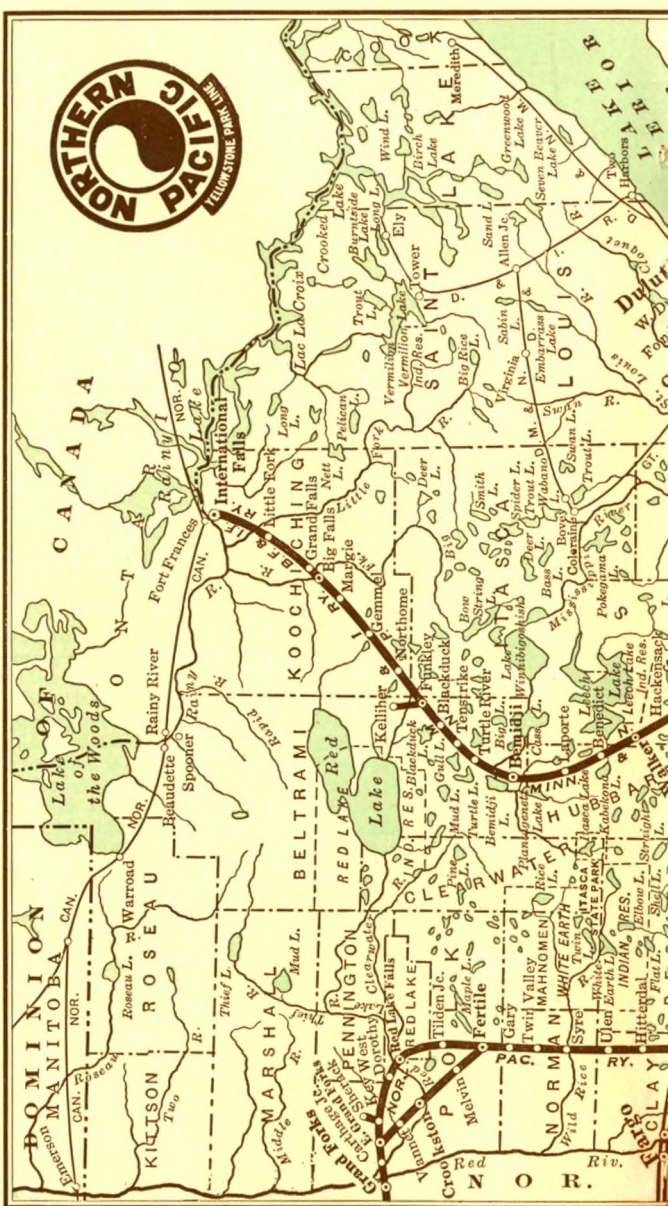
The Deerwood Hotel and Tourists' Home Hotel in the town of Deerwood have steam heat, running water and electric lights. Their rates are \$1.50 and \$1 a day respectively.

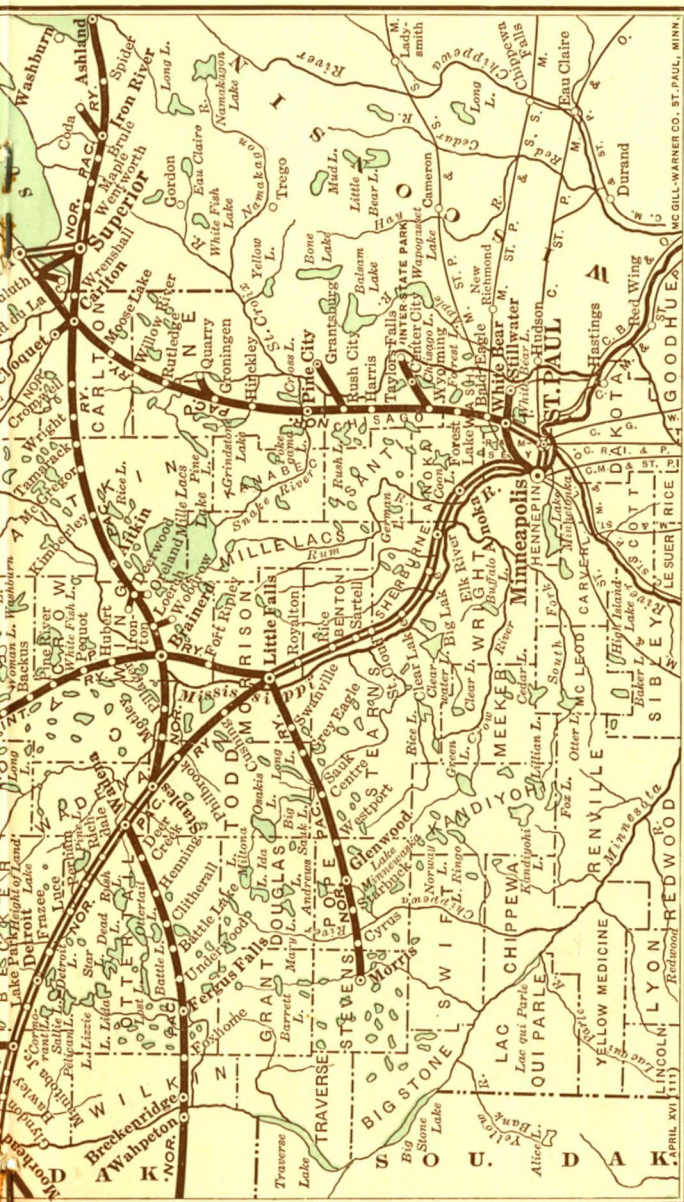
Good fishing and comfortable home accommodations may be found by communicating with any of the following people: A. N. Gray, H. E. Knieff, Albert Nelson, F. E. Fuller, John Nelson, Dave Archibald, G. W. Hunt, of Route 1, Deerwood and Mrs. R. Archibald and A. Wyness of Deerwood.

Pine Tree summer resort, on Bay Lake, is about 8 miles from Deerwood. It accommodates 50 guests in a central lodge and sleeping cabins. Five housekeeping cottages are rented at \$21.50 to \$25 a week, including ice, bedding and boats. Rates in the sleeping cottages and lodge are \$3 a day and \$21 a week, including rowboats. Children are allowed half rates. Auto fare from Deerwood is \$2.50. H. W. Adams, Route 1, Box 51, Deerwood, is the proprietor.

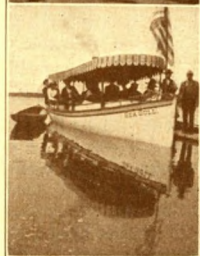
Brainerd

Resorts in and near Brainerd are described later. They are reached on the St. Paul-Brainerd-Bemidji and International Falls Line, which line includes the Minnesota & International and the Big Fork & International Falls Railways.





MC GILL-WARNER CO. ST. PAUL, MINN.





Sylvan

On Sylvan Lake is the town of Sylvan, where the Hotel Ramsey accommodates guests at \$1 a day, \$5 a week and \$20 a month. Black bass, pike and other game fish are caught here. Boats and guides for fishing and small game hunting may be obtained through A. A. Green of Sylvan.

Motley

Furnished cottages on Lake Chamineau, 6 miles from Motley, are very comfortable. Bass, pike and pickerel are plentiful. Boats may be rented for \$2.50 to \$3 a day.

Resorts on the Duluth-Superior-Ashland Line

Iron River, Wis.

In addition to many fine trout streams, Iron River has as attractions Iron, Mud, Mollenhoff, Angus and Pike Lakes. Brook and rainbow trout, pike, bass, pickerel and other game fish abound. At Park Hotel and the New Lenox Hotel of Iron River the rates are \$2.50 a day. Guides, tackle and boats may be rented here.

Ashland, Wis.

Chequamegon Bay, an arm of Lake Superior, and a number of trout streams from 3 to 15 miles distant from the city, provide good muskalonge and trout fishing at Ashland.

The Madeleine Island summer resort is an ideal resting place. Rates on application.

Commercial hotels of Ashland are the Knight, Commercial, Culver and Seventh Avenue, with rates ranging from \$2 to \$5 a day and \$7 to \$17.50 a week.

Resorts on the North Shore

On the North Shore of Lake Superior are the towns of Two Harbors, Lutsen and Grand Marais on the famous north shore drive from Duluth to Port Arthur, Canada. They are reached by boat from Duluth. Two Harbors is reached by the D. & I. R. from Duluth. There is no railroad to Lutsen or Grand Marais. Excellent fishing, hunting and outing opportunities attract tourists to this region.

Two Harbors

At Two Harbors on the North Shore the Y. M. C. A. has tub baths, shower baths and a swimming pool. Two streams flow down to Lake Superior near Two Harbors—the Stewart River and the Gooseberry River—making a most picturesque shore line. Hay fever relief.

Agate Bay Hotel is a new, modern hotel, with a large sun parlor overlooking the lake. Rooms with bath may be had there. Both the American and European plans are followed, with rates of \$1.50 to \$3 a day, or \$8.75 a week and up. Children have half rates. Guides for fishing and hunting. H. J. Letford, proprietor.

Lutsen

Excellent fishing is found in the trout streams of this beautiful region. Charles Nelson of Lutsen is the proprietor of a good hotel with comfortable accommodations, electric lights and hot and cold running water.

Grand Marais

The Lakeside and the Paine Hotels of Grand Marais, and Gateway Lodge, 30 miles from town in the Superior National Forest, take care of summer visitors on this part of the North Shore.



Gateway Lodge is on Hungry Jack Lake, reached by the picturesque Gunflint trail. There is bus service from the Lodge to town. Brook trout, black bass, wall-eyed pike, northern pike and pickerel are caught here, and deer, bear, partridge and water fowl are plentiful in season. A central dining hall and sleeping cabins and a dormitory of hotel-style rooms for the convenience of fishermen, canoeists and transient guests make up the resort. Guides are available. Reservations should be made in advance. Gapen and Wegg of Grand Marais, proprietors.

Resorts Reached by Duluth & Iron Range Connection from Duluth

Tower

This is the gateway to Lake Vermilion. It is near the Lake Superior National Forest and long canoe routes can be taken here through Lake Vermilion and the Vermilion River to a chain of lakes and streams along the Canadian border. Black bass, pike, brook and lake trout, landlocked salmon and muskallonge are plentiful, and duck, geese and partridge hunting in season is excellent. Lake Vermilion is 35 miles long, has 1,000 miles of shore line and 365 islands. It is a part of the Superior National Forest Reserve. Indians and relics of pioneer days make this a particularly interesting region. Boats and launches, which will take parties and provision to any point on Lake Vermilion, can be obtained from a number of outing companies. Hay fever relief.

The city has three commercial hotels—the Goodwills, Eden and City Hotels, offering reasonable rates.

Birch Point Inn, 8 miles from Tower, on Lake Vermilion, is reached by launch. It has a main dining room, sleeping cottages and 4 furnished housekeeping cottages. Home cooking, good beaches and excellent fishing make this an attractive resort. Rates are \$3 to \$3.25 a day for board and room, \$18 to \$21 a week, \$65 to \$75 a month, and half rates for children from 3 to 8 years old. Boats are rented at \$1 a day and \$5 a week. Rates of \$20 a week and \$65 a month include bedding and silver. May 15th to October 1st is the season. A. C. Anderson of Tower is the proprietor.

Hotel Idlewood, on the isle of Pines in Lake Vermilion, is about 8 miles by launch from Tower. It consists of hotel, sleeping cabins and housekeeping cottages in a forest of virgin pines. Fishing, hunting, berrying, launch trips on the lake and boating are the principal resort diversions. Board and room costs \$3 a day and up and \$22 a week and up. Housekeeping cottages, accommodations for 6, cost \$3.50 a day and up and \$18 a week and up. Boats are rented to guests. Herman T. Olson of Tower, Manager.

Dew Drop Inn, on Lake Vermilion, is 12 miles by auto and 8 by boat from Tower. Central buildings and sleeping cottages are comfortable and attractive. Rates are \$3.25 a day, \$18 a week, with half rates for children under 12. Boats rent for \$1 a day and \$5 a week. Swimming, dancing, motor-boating, fishing and hunting are all enjoyed at this resort. There are 7 housekeeping cottages, with rates of \$15 a week. The resort is open from May 1st to November 30th. Carl E. Leitzhe of Tower, proprietor.

Fabin's camp, on Lake Vermilion, is 13 miles from Tower. It is reached by a launch. A fine place to rest, hike, row, canoe, hunt and fish. Guests are accommodated in a main building, cabins and tents. Rates (single) are \$3.50 a day and \$18 a week (double) \$3 a day and \$16 a week. Boats are \$1 a day, \$5 a week and \$15 a month. The camp is open all year. Gus Fabin of Tower, proprietor.



Minnesota Lakes

Grand View, 9 miles from Tower on Lake Vermilion, is reached by launch. It has a log cabin hotel and sleeping cottages. Fishing, hunting and bathing are good. Rates are \$3.50 a day, \$21 a week, children under 7 are allowed half rates, boats are \$1 a day and \$5 a week. The season is May 15th to November 20th. J. E. McCord of Tower, proprietor.

Jackson's place, on Lake Vermilion, is 18 miles by launch from Tower. A central building, sleeping cottages and two housekeeping cottages make up the resort accommodations. Bathing and fishing are fine. Room and board costs \$3.50 a day (double) and \$18 a week. (Special rates for children). One cottage has 6 rooms and a large porch, renting at \$25 a week and \$75 a month. The other has 3 rooms, renting at \$17 a week. The resort, which opens on May 15th, remains open through the hunting season. Fred C. Jackson of Tower, proprietor.

Vermilion Lodge is 18 miles from Tower by launch. It has a central building and log sleeping cottages, electric lights, dancing and motor-boating facilities. Big game and excellent fishing opportunities are offered. Rates \$3 a day and \$19 a week, with half rates for children. Boats are \$1 a day and \$4 a week. There are 5 new log housekeeping cabins, with screened porches and 3 rooms each, renting at \$21 a week. The season is June 1st to December 1st. Lloyd R. Shively, Vermilion Dam P. O., proprietor.

Ely

The town of Ely is known as the gateway to 2 great national forests—the Superior National Forest in the United States and the Quetico Forest across the Canadian border. There are 1,268,000 acres of coniferous forest here and 250,000 acres of this area is water—lakes, rivers and small streams. Canoe trips are almost innumerable. Guides are good. Hay fever relief.



PHOTO BY CLOUD

A P elty Fair Day's Sport

Northern Pacific Railway



Burntside Lodge, on Burntside Lake, is 6 miles from Ely and 3 miles from the railroad station and post office of Burntside. It has a central lodge with lounge and dining rooms, and 12 double sleeping rooms, log sleeping cabins and 5 cabins equipped for housekeeping. There are from 1 to 5 rooms in the sleeping cabins and the housekeeping cabins have from 1 to 4 rooms and screened porches, electric lights, etc. Tennis, dancing, motor-boating and bathing are popular here. Fishing is good, and deer and partridges are plentiful in season. There is an excellent bathing beach. Board and room cost \$3 a day and up, \$23 a week and up, and half price is allowed for children under 10. Rowboats \$7 a week. Auto fare to the lodge from Burntside station is 50 cents. W. A. Alden, proprietor.

Camp Van Vac, on Burntside Lake, 3 miles from Burntside station and 6 miles from Ely, has 15 furnished housekeeping cabins of log and field stone with screened porches and good floors. Spring water and berries are attractions of this camp. Canoe trips through Superior National Forest. Lake trout, black bass and other fish are plentiful, and rabbits, grouse and big game in season attract hunters. Skiing and snowshoeing are enjoyed here in winter. Rowboats cost \$1 a day. Auto fare from the station is \$1. V. V. Harris of Ely, proprietor.

Crawford Lodge, on Lake Ge-Go-Ka, is 36 miles from Ely in the Superior National Forest. It has a hotel and central dining room and log cabins rented with or without housekeeping privileges. A good bathing beach and spring water are attractions. Brook trout and other fish, partridges, ducks, deer and black bears are all plentiful in season. Rates \$3 a day and up and \$21 a week and up. Mr. M. N. Crawford, post office Isabella, Lake Co., Minn., is the proprietor. The resort is reached by auto from Ely.

Arrangements for canoe trips and outfits may be made with a number of reliable concerns and good guides may be had in Ely at reasonable rates.

Resorts Reached by Duluth, Missabe & Northern Connection from Duluth Coleraine

The hotels of Coleraine, the Arcana and the Northern, accommodate fishermen and summer vacationists at reasonable rates. Trout Lake offers good fishing and boats and guides are available. This is a beautiful country.

Pengilly

Cottages may be rented at Pengilly, with pike and bass fishing in Swan Lake as a principal attraction. Rates are from \$10 to \$20 a week.

Resorts on the International Falls Line (Minnesota & International Railway and Big Fork & International Falls Railway)

Brainerd

Brainerd is a central point for summer outings among scores of beautiful lakes. Gull Lake, North and South Long Lakes and Lakes Rice and Gilbert are close by. A country golf course is open to visitors of nearby resorts and there are beautiful drives connecting Brainerd with the lakes.

The Ransford Hotel, half a block from the Northern Pacific station, accommodates 300 guests, rates \$1.50 a day and up. The Harrison, two blocks from the station, has accommodations for 80 people, rates \$1 a day and up. The National, 2½ blocks from the station, has accommodations for 60, rates 75 cents a day and up. One block from the station is the Ideal Hotel, 30 guests, rates \$1 a day and up. The Windsor accommodates 25 people, rates 75 cents a day and up. It is 4 blocks from the railroad station.



Minnesota Lakes

The Birchdale Resort, 8 miles north of Brainerd, consists of 4 furnished housekeeping cottages on Long Lake. Each cottage rents for \$3 a day, including ice, wood, and the use of a rowboat. An extra charge is made when blankets and linen are furnished. Black bass fishing is good and the bathing beach is excellent (and safe for children). Duck hunting is popular in the fall. The resort opens May 15th. George R. West is the proprietor.

Lone Pine Camp, on South Long Lake, is 10 miles south of Brainerd. It includes a central building and sleeping cottages, with accommodations for 40. One cottage in addition is furnished for housekeeping. Each of the sleeping cottages has 2 or 3 rooms and a screened porch. Rates for room, board and rowboat are \$2.50 a day, \$14 a week or \$45 a month. Rates for children are \$1.50 a day or \$30 a month. The housekeeping cottage rents for \$25 a week, including ice, bedding and a rowboat. It has 4 rooms and a screened porch. Tennis, bathing, fishing for bass, northern pike and crappies, and duck and partridge shooting in the fall are popular.

Squaw Point, between Gull and South Gull Lakes, is 11 miles from Brainerd. Six housekeeping cottages, rates \$21 a week, including ice, linen and rowboat. Board and room \$2.50 a day and \$15 a week, with half rates for children. Boats are \$1.50 a day and \$9 a week. Good bathing, good fishing and duck hunting in the fall. Guides are furnished for fishing and hunting. Ernest Ritari, 1123 Norwood Street, Brainerd, proprietor.

Lone Pine Camp opens May 1st and closes November 30th. Automobile fare from Brainerd to South Long Lake is \$4. Wm. McCall of Brainerd is the proprietor.

Merrifield

About 10 miles north of Brainerd, near Bass, Long and Edwards Lakes, is the town of Merrifield, where bass, northern pike, crappies and sunfish are caught and wild geese and ducks offer good sport in the fall.

Pine Lodge is an inviting spot, where individual cottages and dining hall service are available for guests. Bathing, fishing and boating facilities are good. Hendrickson and Peterson of Merrifield are the proprietors.

Silver Beach, on Bass Lake, 12 miles from Brainerd and 4 miles from Merrifield, accommodates 50 guests in cottages, with table board furnished if desired; 60 acres of virgin pine make this a beautiful place. Fishing and hunting are good. The Seyferth Company of Merrifield is the proprietor.

Velvet Beach, on Big Pelican Lake, is 5 miles from Merrifield. It will appeal to guests desiring rest and quiet in pleasant, home-like surroundings. Good meals and comfortable beds are offered here. The rates are reasonable. A bathing beach, good fishing and a pine grove around the resort attract tourists to Velvet Beach. Mrs. Ike Miller, of Merrifield, proprietor.

Wigwam, on Long Lake, is convenient to the railroad station and has accommodations for 25 guests. Excellent meals are served. Rates reasonable. Fishing and bathing facilities are good. Mrs. M. A. Bronson of Merrifield is the proprietor.

Hubert

Sixteen miles northeast of Brainerd, on Hubert Lake, with Gull Lake a few miles to the west. Hubert is a charming vacation region.

Camp Lincoln, formerly known as Blake Camp, is 16 miles from Brainerd on Lake Hubert. Boys from 8 to 16 are placed in junior and senior camps here. A counselor is provided for each boy. Tramping and canoe trips are special features. Rates are \$200 for the season, July 1st to August 26th. R. F. B. Cote is the camp director, Room 207 School of Business Building, University of Minnesota.

Minnewawa Lodge accommodates 50 guests, rates \$3 a day and \$20 a week and up. It is half a mile from the railroad station. Good fishing. Benjamin C. Heald, Jr., of Hubert, is the proprietor.

Northern Pacific Railway



Pukwana Lodge, on Hubert Lake, is surrounded by pines and offers good fishing, boating and bathing. Vegetables and berries from the garden. Cottages are rented also. J. R. Ressler is the proprietor. Rates are \$3 a day and \$18 a week.

Boats are rented at the lodges for 75 cents a day and \$2.50 a week. Guides \$2 a day. Cottages may be rented from D. C. Heald and Z. B. Clarke of Hubert.

Nisswa

Nisswa is near the Gull Lake Chain of 25 lakes, and is surrounded by a beautiful resort country, with pine woods everywhere. Bass, wall-eyed pike, pickerel, muskallonge, crappies and sunfish are plentiful, and ducks, partridges, prairie chickens, rabbits and squirrels are hunted in season.

Ojibwa Park, between Round and Long Lakes, is about 10 miles north of Brainerd. Cottages are rented here reasonably. John L. Smith, 211 South Fourth St., Minneapolis, will send rates upon request.

Glen Echo resort, on Lake Margaret, part of the Gull Lake chain, is 6 miles from Nisswa. Furnished housekeeping cottages at \$12 to \$18 a week are rented here (including bedding and use of a rowboat). The resort has a motor-boat also. It is reached from Nisswa by launch, auto or bus, fare \$1. The season is May 15th to October 30th. W. C. Low of Pequot is the proprietor.

Ozonite Park, on the north bay of Gull Lake, 4 miles from Nisswa, accommodates 75 guests in cottages equipped for housekeeping or in the main building. Meals are served when ordered. Safe beaches and protected waters make this a fine place for bathing. Tennis, motor-boating, hunting and fishing are favorite sports. Cottages accommodate from 3 to 12 persons. Blankets are furnished, but no linen or silver. Each cottage has its rowboat and a screened porch. Board and room is \$3 a day or \$18 to \$25 a week, and special rates are arranged for families. Housekeeping cottages rent for \$18 to \$40 a week during July and August. Special reductions are made in May, June, September and October. Telephone Brainerd 44-F-2. St. Paul office, 222 Hamm Building.

Grand View Lodge is 12 miles from Brainerd in Gull Lake Park on Gull Lake, rates \$4 a day and \$26.50 a week. It is 3 miles from Nisswa. There is a new central building at this resort, with a dining room seating 200, and a roof garden (8,000 square feet of floor space for dancing or athletics). Twenty new sleeping cottages and club house accommodations for 100 guests bring the number of people accommodated to 125. Fishing, bathing, boating, dancing, tennis, riding, golf and horseshoe pitching are amusements of vacationists at Grand View Lodge. M. V. Baker of Nisswa is the proprietor.

Rocky Point, on Gull Lake, 8 miles from Nisswa, accommodates 60 guests in a central building and cottages. Tennis, dancing, radio, bathing and boating (motor-boats) vie with fishing and deer hunting, in seasons, as the favorite amusements. Rates are \$3 a day and \$18 a week. Boats are rented for \$1 a day and \$3.50 a week. Bus or auto fare from Nisswa is \$1. Housekeeping cottages are rented here during September, October and November for \$10 to \$20 a week, including boat. The resort opens May 15th and closes November 15th. Chas. E. Anderson of Nisswa is the proprietor.

Camp Comfort, on Gull Lake, is $3\frac{1}{2}$ miles from the station. It has a central dining room and sleeping cottages and accommodates 30 people. All kinds of fishing and small game hunting are enjoyed here. Rates are \$3 a day and \$18 a week, including boat and garage. Half rates are offered for children. The season lasts from May 15th to November 1st. A. Hawkinson is the proprietor. Winter address: 969 Carroll Avenue, St. Paul, Minn.

Pine Harbor, on Gull Lake, is 7 miles from Nisswa in a pine grove. The bathing beach is good, fishing fine and motor-boats are available. This resort is open all year. Gust Almquist of Pequot will send rates upon application.

Portview Resort, on the Gull Lake Chain, is 5 miles from Nisswa. Hotel and cottage accommodations are offered here with board for \$2.50 a day and \$14.00 a



Minnesota Lakes

week, with special rates for children. Housekeeping cottages rent for \$12.50 to \$18 a week, including the use of a rowboat. The season is May 15th to November 30th. G. R. McClintock of Pequot is the proprietor.

Pine Acres, on Cullen Lake, 2 miles from Nisswa, accommodates 20 people. It has a central building and cottages for sleeping, in the midst of a pine grove. Fishing is good. Rates \$3.50 a day and \$21 to \$25 a week, with the use of a rowboat included. The season is June 1st to September 15th. Mrs. F. L. Hermann of Nisswa is the proprietor.

Inwood, 7 miles from the Nisswa station, accommodates 75 guests, rates \$4 a day and up and \$21 a week and up. It is reached by launch from Nisswa and automobile from Pequot. Guests should make arrangements in advance. For reservations address Misses Helen M. and Jessie Archer, Pequot. Winter address: 4312 Linden Hills Boulevard, Minneapolis.

In Nisswa is the Marquis Hotel with rates of \$1.50 a day and up.

Pequot

Pequot is near Whitefish, Big Pelican, Gull, Sibley and other lakes where bass, crappies, pike, pickerel and muskalonge abound. Besides ducks, geese and other small game, deer are hunted in season.

Camp Lora, on Big Whitefish Lake, is 5 miles from Pequot. It has 5 housekeeping cottages with 2 or 3 rooms, screened porches, rowboat, garage, ice, bedding, linen and silver. These cottages are rented at \$3 a day and \$15 or \$18 a week. The season is from May 15th to October 15th. This resort has a good beach and a motor-boat. Fishing is excellent. Samuel Johnson of Pequot is the proprietor.



PHOTO BY CLOUD

Aquatic Sports Are a Feature

Northern Pacific Railway



Breezy Point Lodge, on Big Pelican Lake, $5\frac{1}{2}$ miles from Pequot, is a well-known resort, accommodating 250 guests. A central lodge, sleeping cottages and furnished housekeeping cottages are grouped on the lake shore. Tennis, dancing, horseback riding, trap-shooting, water sports of all kinds, and bathing on an excellent white sand beach keep vacationists busy here. A 9-hole golf course adds to the attractions. Black bass and northern pike are plentiful, and ducks, partridges and prairie chickens in season. The lodge has a cafe. Rooms in the lodge and sleeping cottages are \$3 a day for one person and \$5 for two persons, housekeeping cottages rent for \$28 to \$36 a week for two persons (\$7 a week extra for additional persons). Children under 12 at half rates. Boats and garage are included in the rates. The season closes October 1st. W. H. Fawcett of Pequot, proprietor.

Piney Crest Lodge, on Cross and Rush Lakes, is 14 miles from Pequot. There are accommodations for 20 in the central building and the sleeping cottages. A good beach, good fishing and good small and large game hunting found at Piney Crest. \$2.50 a day, with special rates by the week or month. Boats are included in the rates. The lodge is open all year. John J. Grove (Cross Lake P. O.) is proprietor.

Goodman's Birchdale Villas are on the White Fish chain of lakes, 6 miles from Pequot. A central building and furnished housekeeping bungalows, a good bathing beach, canoeing, outdoor sports and dancing are features of this resort. Wall-eyed pike, trout, black bass and crappies are caught, and ducks, prairie chickens and partridges hunted in season. Cottages rent for \$25 per week, including boat and ice. May 15th to November 1st is the season. Geo. W. Goodman of Pequot, proprietor.

Point Narrows Resort, on Upper Gull Lake, is on 2 fishing and duck-hunting lakes, connected by water with Big Gull, Nisswa and others. New cottages, shaded by large trees, are rented here with or without board. J. A. Lundeen of Pequot is the proprietor. There is a good bathing beach, and fresh eggs, milk and vegetables can be obtained on the grounds.

Springside Resort, on Upper Gull Lake, offers new cottages at reasonable rates. Refreshing spring water. Good fishing. W. F. Sutzer of Pequot, proprietor.

Rates at The Tanzer and the Commercial Hotels of Pequot are \$2 a day and \$7 a week for comfortable accommodations.

Idle Hour Resort (20 guests) has rates of \$2.50 a day and \$15 a week, and the Camp Fire Lodge, 7 miles from Pequot, \$2 a day and \$14 a week, with accommodations for 30 people.

Inwood, Glen Echo and Portview Resorts, described under Nisswa, are conveniently reached from Pequot.

Jenkins

Jenkins has in its near neighborhood Whitefish Lake, Hay Lake and a chain of smaller lakes, bass, lake trout, crappies, pike, pickerel and muskalonge are plentiful.

Kamberling's Whitefish Lake Resort is $5\frac{1}{2}$ miles from Jenkins. It has a central lodge and sleeping cottages for 50 people. Fourteen varieties of wall-eyed pike and bass are caught here. Ducks, grouse and snipe provide sport for hunters, \$3 a day and \$17.50 a week is charged for accommodations including the use of a rowboat. Special rates are provided for children. Auto fare from Jenkins is \$1. One housekeeping cottage, furnished, with 3 rooms and a screened porch, rents for \$25 a week and \$90 a month. There is a golf course within 25 miles on the state road. Dancing and motor-boating are popular diversions. The season is all year. Charles, J. A. and F. A. Kamberling, proprietors.

Piney Ridge Resort, on the north shore of Whitefish Lake, is a shady, restful spot among the pines. The cottages are not too close together and fishing is fine (14 varieties). Tennis and dancing. Home cooked meals are served in a central



Minnesota Lakes

dining room. Eighty guests can be accommodated and the rates are \$4 a day and \$25 a week. F. W. Palmer is the proprietor.

Shadyrest Camp, on Whitefish Lake and Lake Bertha, offers the best of fishing, boating and bathing. Thirty lakes can be reached with a motor launch. P. O. Hawkinson of Pequot, proprietor. Seventy guests can be accommodated. Furnished housekeeping cottages rent for \$15 to \$40 a week.

Red Cedar Lodge, 5 miles from Jenkins, has furnished log cabins for housekeeping on Whitefish Lake. Accommodations for 50 guests. Rates \$2.50 a day and \$17.50 a week.

Lakeside Hotel and Hardy's Camp are other Jenkins resorts and Goodman's Birchdale Villas (described under Pequot) are 7 miles from Jenkins.

Pine River

Another delightful resort region surrounds the town of Pine River near Sylvan, Norway, Woman's, Whitefish, Hattie, Ada, Ponto and other lakes. Black bass, pike, muskalonge, ducks, chicken, partridge and deer in season invite the sportsman. Long canoe routes and a near by forest reserve add to the attractions.

The New Spurrier Hotel, a modern three-story building, has accommodations for 59. Rooms with baths may be had here. Norway Lake is near by. Rates are \$3.15 a day and \$25 a week, with half rates for children. It is open all year. J. F. Frances of Pine River, proprietor.

Lake View Camp, on Black Water Lake, is 18 miles from Pine River. Cabins for housekeeping are rented here. Rates are \$2 to \$3 a day and \$20 a week. Boats are rented at \$1 a day and \$6 a week. Auto fare from Pine River is \$5. Muskalonge, black bass, pike, ducks, bears, wolves and deer in season reward the sportsman who makes this his headquarters. The season lasts from June 15th to September 15th. Isak E. Norman of Pine River, proprietor.

Spring Beach, on Lake Ida, is 10 miles from Backus. Six furnished housekeeping cottages accommodating 6 persons each are rented at \$2.50 a day and up, including the use of a boat. Weekly and monthly rates will be given upon request by Ford P. Blesi, proprietor, of Pine River. The resort opens May 15th.

Fox Lake and Brook Resort, 18 miles from Pine River, has furnished cottages on Fox Lake, with a fine bathing beach. Game fish abound in the lakes. Meals are served. Rates are \$15 a week including the use of a rowboat. Auto fare from Pine River is \$3 to \$5. Harry Keep of Cross Lake, proprietor. The resort is open from May to November.

Pocahontas Lodge, on Lake Wabedo, 20 miles from Pine River, has a central building and cottages. Good fishing, hunting and bathing beach. Board and room cost \$3.50 a day and \$22 a week here, rowboat included. Auto fare from Pine River is \$7. George W. Ruscas, proprietor. The season is from May 15th to November 30th.

Wolf Lodge, 20 miles from Pine River Station, is on Wabedo and Little Boy Lakes. A main camp and cottages accommodate 50 guests. The main camp is for men only. Rates are \$3 a day for board, lodgings and use of a boat. Pike and muskalonge, partridge, ducks, bear and deer. Housekeeping cottages are from \$3 to \$5 a day, including ice, bedding, silver and rowboat. There is a good bathing beach. Auto fare from Pine River is \$8. The lodge is open May 15th to November 1st. Frank Hardy of Longville, proprietor.

Camp Sylvan, 10 miles from Pine River, accommodates 15 guests at \$2 a day and \$12 a week.

Jordan Brothers have a resort 25 miles from the town where 20 guests are accommodated at \$2 a day or \$12 a week. The Kinnes Camp has the same rates and can take the same number of people. It is 12 miles from Pine River.

Piney Ridge, 6 miles from town, has accommodations for 100 guests. Rates at this fine resort are \$3.50 a day and \$20 a week.

Idaho Lodge, 18 miles away, has room for 15 people at \$3 a day and \$18 a week.

Northern Pacific Railway



Indian Paradise, 13 miles from Pine River, will send rates upon application. It accommodates 25 guests and is a cottage resort.

On the shore of Norway Lake, 1½ miles from Pine River, Vandalia Cottages offer an inviting place for a vacation. A safe beach of hard sand and pine woods make this a most attractive spot. The cottages have two large rooms and a screened porch 8 x 18 feet. The rooms are fitted for kitchen and dining room and are completely furnished for 4 persons. Cots, additional dishes and linen can be furnished at a nominal price. The porches have adjustable shutters so they can be made into enclosed rooms. Rates are \$17 a week and \$60 a month, linen extra. A new boat is included with each cottage. Fresh vegetables and good dairy poultry products obtainable. A 9-hole golf course is free to guests of this resort. J. R. Van Arsdale of Pine River, proprietor.

Lake Ada Beach is 10 miles north of Pine River on Lake Ada. It has 4 furnished housekeeping cottages for from 4 to 6 persons. Each cottage has a screened dining room and sleeping porch. The bathing beach is safe for children. Rates are \$2 a day, \$12 a week and \$40 a month. Rowboats cost \$1 a day and \$5 a week. Sunfish, pickerel, pike, bass and crappies abound, and ducks, partridge and deer in season provide good hunting. Auto fare from Pine River is \$2.50 a trip. The season is May 1st to November 15th. F. R. Anderson, proprietor.

Gitchie Gumee Lodge, on Long Lake, is 24 miles from Pine River. It accommodates 25 in the main building and 2 housekeeping cottages, furnished. Bathing, hiking, fishing, hunting and dancing are enjoyed here. Rates are \$3 a day and \$18 a week, with children's rates of \$2 a day and \$10 a week. Housekeeping cottages will accommodate 4. Fuel and ice furnished. These cottages rent for \$2 a day. Boats are \$1 a day. The season opens May 1st and lasts until December 1st. M. V. Culhane of Longville, proprietor.



PHOTO BY CLOUD

A Family Camp Among the Birches



Minnesota Lakes

Big Trout Lake Lodge, on Big Trout Lake, accommodates 50 guests at \$3 a day, \$17 a week and \$50 a month.

Illinois Lodge, on Mule Lake, has accommodations for 14 people at \$2.50 a day and \$15 a week.

Kinnes Camp charges \$2 a day and \$12 a week and accommodates 20 guests.

Myrtle Lodge Cottages, on Whitefish Lake, cost \$20 a week. There are 5 furnished housekeeping cottages in this pleasant resort.

Shore Acres Camp has furnished cottages which rent at \$17.50 to \$25 a week. This is a very attractive spot on Woman Lake, with a fine sand beach, safe for children. Good boats are furnished and motors rented. Groceries and supplies are delivered on the grounds daily at regular prices. Cabins are of log construction, have 8-foot, full width, enclosed screened porches, and one, two and three rooms furnished for housekeeping. Each cabin faces the lake and has plenty of privacy. A nominal charge is made for linen. Mae L. Farrar, owner and manager, Pine River, Minn. (Address November 1st to May 1st: 21 9th St. N. W., Mason City, Iowa)

Backus

On the shore of Mountain Pine Lake, Backus offers many delightful places for a summer vacation.

Island Beach is one of them. On Pleasant Lake $3\frac{1}{2}$ miles from Hackensack, this resort is beautifully situated on a pine-covered peninsula. It is a family resort, with 1, 2 and 3-room cottages newly furnished for light housekeeping. A dining room is managed by the resort. Excellent food is furnished, with milk from state-tested cows. A sandy bathing beach, rowboats and a motor-boat, good fishing and hunting for small game keep the guests busy. For rates apply Huber Haterbach of Hackensack, Minn. The season lasts from May to November.

The Fairview Hotel in Backus has rates of \$2.50 a day and accommodates 40 guests. It is a block from the railroad station.

Kabekona Camp, 18 miles from Backus, has accommodations for 100 people. Rates for this attractive resort are sent upon application.

Ponto Lake Summer Resort and Dorry's Resort are 2 other places where summer guests are certain to enjoy themselves.

Camp Sylvan, 7 miles east, on a beautiful lake, is described under Pine River.

Cottages on Lake Sanborn, 4 miles east of Backus, may be rented from Dr. Frank E. Doulk and Roy De Marse, both of Backus. A. O. Miller has a cottage available on Pine Mountain Lake.

Hackensack

Hackensack, on Pine Mountain Lake, is connected with long canoe routes to chains of lakes and streams in every direction. Black bass, crappies, muskellonge, pickerel and pike are caught in these waters.

Seni-Om-Sed Lodge on Woman Lake, 12 miles from Hackensack, accommodates 80 people in barracks and cottages. Electric lights, shower baths, rooms with baths, and facilities for tennis, dancing, bathing, motor-boating, horseback riding and fishing are attractions of the resort. Board and room, including use of a rowboat, at \$3.50 a day and \$17.50 a week. Housekeeping cottages, log and frame, with 1 to 6 rooms and \$15 a week and up. The season is May 1st to November 15th. E. Stanley of Hackensack, proprietor.

Hotel Endeavor, near Birch Lake, across the street from the M. & I. station, is a good commercial hotel, catering to tourists. Rates are \$2 a day and \$10 a week. It has electric lights, tennis courts and boats (\$1 a day). Dancing, fishing and hunting are popular diversions. The hotel is always open. G. L. Beardsley of Hackensack is the proprietor.

Wi Wi Ta, on Woman Lake, 15 miles from Hackensack, has a main lodge and cabins. Golf, tennis, horseback riding, motor-boating, good fishing and hunting attract vacationists here. Rates \$3.50 a day, children at half rates. June 1st

Northern Pacific Railway



to December 20th is the season. L. M. Spain of Hackensack is the proprietor. (Special weekly rates on application)

Webb Lake Resort, near Woman Lake, is made up of furnished housekeeping cottages. It has an excellent bathing beach. Northern and wall-eyed pike, bass and crappies are caught in the lake. Supplies are easily obtainable at reasonable prices. A. R. Maeser, 3756 Colfax Ave. N., Minneapolis, proprietor.

Woman Lake Lodge Company has furnished cabins on the fine bathing beach at Woman Lake. Farm and store, boats, bait and ice on the place. J. L. Decamp of Hackensack, proprietor. Rates are \$15 a week and up.

Shady Shores, between Ten Mile and Birch Lakes (5 miles by road and 3 miles by water from the M. & I. station), offers furnished housekeeping cottages at \$20 a week and up. Pike and bass fishing is good. The resort is open from June to September. Wm. A. Moore, Sauk Center, proprietor.

Hustle-In Lodge, on Ten Mile Lake, $3\frac{1}{2}$ miles from Hackensack, has cottages for \$25 a week each, with the use of a rowboat. The bathing beach is especially good. Muskalonge, rock bass, big northern sunfish, northern pike, wall-eyed pike and black bass are caught in the lakes, and duck and deer hunting in season is good. Al. Smith is the proprietor and the resort is open until late autumn.

North Star Camp, on Woman Lake, is $12\frac{1}{2}$ miles from Hackensack. The main lodge and cottages accommodate 45 guests. Room and board, with the use of a rowboat, costs \$3 to \$3.50 a day, with special rates for children. A large housekeeping cottage rents for \$25 a week. Muskalonge, bass and pike, partridge, duck and deer in season tempt sportsmen to stay here. W. J. Spain is the proprietor. Auto fare from Hackensack is \$4 round trip.

Other resorts are Ogama Hotel, Lakeview Hotel, Johnson's Lake Resort and End of the Trail (furnished cabins \$15 to \$20 a week).

Kenfield Lodge, 7 miles from town, accommodates 35 guests, rates \$3.50 a day and \$21 a week.

It has a log cabin dining hall and log cabin sleeping cottages, a sandy bathing beach, good fishing and hunting opportunities and is open all year. This is a good place for those who like the woods in winter. Children under 9 are given half rates. Kenneth M. Wright of Hackensack is president. His winter address is 101 East 6th Street, St. Paul.

Klose to Nature's Kamp is 8 miles from the station on Ya-man-na Island. Rates \$3.50 a day and \$22.75 a week. It has room for 50 people and is a delightful place for camping fun. Mrs. A. M. Robertson and Sons are the proprietors.

Kabekona Camp, described under Backus, may be reached from Hackensack also.

Call of the Wild Cottage Resort on Ten Mile Lake has 5 furnished cottages at \$12 to \$25 a week.

Walker

Walker lies on the shores of Leech Lake, one of Minnesota's largest. The Chippewa Indian Reservation is located here. Pike, muskalonge, whitefish and bass fishing is good and there are both large and small game for the hunter.

Merritt Lodge, 14 miles from Walker, has a good bathing beach and offers both fishing and hunting. Room and board cost \$4 a day or \$25 a week. Housekeeping cottages are rented at \$35 to \$50 a week and up. Ida M. Merritt is the proprietor.

The New Chase Hotel, on Leech Lake, is convenient to the M. & I. Station. It is a modern hotel, accommodating 200. Rooms may be had with or without bath. The dining room opens toward the lake. Dancing, motor-boating, radio, concerts, tennis, golf (9-hole course), horseback riding, and both fishing and hunting make one's stay enjoyable. Rates \$3.50 a day and up, or \$24 a week, with special rates for children. Rowboats are extra. The season is from May 1st to December 1st. L. H. Chase of Walker, proprietor.

Glengary Springs, on Leech Lake, is one and one-half miles from Walker.



Minnesota Lakes

It accommodates 200 in a central building and sleeping cottages. Housekeeping cottages are also available. Modern rooms with bath may be had. Golf, tennis, horseback riding, motor-boating, bathing, fishing and hunting are the principal diversions. Rates are \$4 a day and up or \$25 a week. The season is from May 15th to October 1st. P. H. McGarry of Walker is the proprietor.

Forestview Lodge is 17 miles from Walker on Leech Lake. It has a new central lodge and sleeping cabins, also housekeeping cabins. A bathing beach and golf course, motor-boat and fine fishing are attractions at Forestview. Board and room, \$3.50 a day, \$21 a week, for children under 12, \$2 a day or \$12 a week. Boats are extra. Housekeeping cabins accommodating 4 persons rent at \$25 a week, including ice and bedding, but not linen or rowboat. Auto fare from Walker is \$5 a trip, launch fare \$6 a trip. The season lasts from May 15th to September 1st.

Fisher's Point, $1\frac{1}{2}$ miles from the station, accommodates 25 and will furnish rates upon application.

Benedict

Benedict has Lake Kabekona to attract tourists. The fishing here is very good and the scenery delightful.

Benedict Hotel and cottages offer reduced rates for children. The bus fare, round trip, is \$1.50. Launch and rowboats may be rented, and guides are furnished at \$4 a day. Thomas Brothers will send the rates upon application.

Pine Cone Camp No. 3 is also located at Benedict.

La Porte

On Garfield Lake, near Steamboat and Hart Lakes, La Porte has blue gills, bass, pike, pickerel and sunfish in large numbers. Partridge, ducks and prairie chickens are plentiful in season.

The Child summer resort on Garfield Lake is half a mile from La Porte. It has 3 cottages equipped for housekeeping and 1 tent cottage, screened. Good fishing, motor-boating and horseback riding are offered. Rates are \$15 a week. Boats are \$1 a day and \$3 a week. Linen not furnished. Reached by auto or launch from La Porte. Open May 1st to December 1st. A. E. Child is the proprietor.



On the Bemidji Golf Links



Fish Point Cottages, half a mile by launch from La Porte, offer a fine place for summer fun, fishing and hunting. There are 3 cottages, fully equipped for housekeeping at \$15 to \$20 a week. Open May 15th to October 30th. R. J. Childs, proprietor.

Cottages may also be rented from A. E. Kasten, at \$1.25 a day and up. Kabe-kona, Horseshoe, George and Itasca Lakes are within reach.

The Hotel La Porte, rates \$2.50 a day, furnishes auto transportation to nearly all the surrounding lakes at 20 cents a mile.

On Lake Itasca, Douglas Lodge offers good fishing and a charming vacation setting, with comfortable accommodations at \$2 a day and \$10 a week. It is reached by automobile from La Porte. This is in Itasca State Park. J. A. McMahon is the custodian, P. O. Arago, Minn.

Bemidji

Surrounded by the pines of Lake Bemidji, this resort town is within easy reach of Lakes Plantagenet, Campbell, Turtle, Little and Big Bass, Marquette, Irving and others, from 6 to 20 miles distant. Black bass, brook trout, pike, perch and pickerel, whitefish in October and November, and good duck hunting make Bemidji resorts especially attractive to sportsmen.

Canoe trips can be taken through chains of lakes and streams and down the Mississippi. Bemidji was named for an old chief who was patriarch of a small Indian band living near the south end of the lake. The drive around lake Bemidji is called "Trail of the Whispering Pine" and is noted for its beauty.

The Markham Hotel of Bemidji is a block from the station, accommodates 150 guests and has rates of \$3.75 a day and up. It is a modern, first-class hotel, operated on the European plan.

Commercial Hotels of the town are the Erickson (American plan), the Dalton (American plan) and the Jefferson, conveniently located and comfortable.

The New Birchmont Beach Hotel, 5 miles from town, is on the shore of Lake Bemidji. It offers every comfort, including rooms with bath, and a wide choice of outdoor diversions. Fishing, bathing, motor-boating, tennis, golf, horseback riding and dancing are all popular. In addition to the hotel, there are 18 sleeping cottages. Rates are from \$5 to \$6 a day for adults and \$3 a day for children under 8 years. Boats are rented for \$2 a day. Taxi fare from the railroad station to the hotel \$1.50. The season is from June 10th to September 10th. E. W. Byer of Bemidji is manager for the Birchmont Hotel Company.

Lone Pine Lodge, on the east shore of Lake Bemidji, is half a mile from town. It accommodates 10 people. Rates are \$3 a day, \$18 a week and special rates of \$1.50 a day and \$9 a week are offered for children under 6 years of age. The season is June 1st to October 1st. Mrs. C. F. Williams of Lavinia, proprietor.

Douglas Lodge, at Arago, 35 miles from Bemidji, accommodates 125 guests at \$4 a day and up.

Jester Farm, 8 miles from town, has room for 75 summer guests and will send rates upon application.

Turtle River

With Turtle River, Long and other lakes surrounding it, the village of Turtle River is a secluded and beautiful vacation spot.

Lanelton Place charges \$2 a day for cottages completely furnished, except for linen, and including fuel and ice. Bass, crappies, whitefish, perch, pickerel, pike and muskalonge are caught. Launches and boats may be rented. There is duck shooting in the fall. Bass are especially plentiful in Long Lake.

Tenstrike

Gull, Twin and Ericson Lakes are near Tenstrike, and pickerel, black bass, muskalonge, pike and perch abound. Hunting, big and small game. At the Davis Hotel the rates are \$2 a day, \$10 a week and \$40 a month. Boats may be rented here.



Minnesota Lakes

Blackduck

Blackduck Lake and 15 others within easy reach furnish pike, black bass and other kinds of good fishing. The Palace Hotel, new and modern, has 30 rooms, the Merchants, 20 rooms, and the West, 15 rooms. Rates are reasonable. Guides may be hired and expeditions made to the other lakes in the region of many resorts.

Northome

Northome has Battle Lake, Island Lake, Bartlett, Moose and Squaw Lakes nearby. Pickerel, pike, crappies, muskalonge and bass are caught in these waters. Big and small game hunting, with especially good duck shooting at Squaw Lake, attract many sportsmen to this region.

The Merchants Hotel accommodates 40 people at rates of \$2 a day. The Northome Hotel has rates of 75 cents to \$1 a day for rooms only. The Scenic Hotel, rates \$2.50 a day and \$10 a week and up, is a convenient, comfortable place.

Danola Lodge, 25 miles from the station at Northome, accommodates a large number of tourists each summer, in a central building and sleeping cottages. It is on Island Lake, where crappies, bass, wall-eyed pike, muskalonge and pickerel are plentiful. There are fireplaces in the main dining room and in all sleeping rooms in the separate cottages. Tennis, croquet, quoits and motor-boating vie with bathing and fishing for popularity, hunting for deer, partridge and ducks in season is also good. Rates are \$3 to \$3.50 a day and \$17.50 to \$21 a week. Children under 6 are allowed half rates. Rowboats are furnished free to guests. Auto fare from the station to the lodge is \$2 a trip. The lodge is open from May 15th until the end of the summer season. D. R. Thompson, proprietor. His winter address is 722-24 Central Ave., Minneapolis, Minn.

Cut Foot Sioux Narrows Lodge is in the Minnesota National Forest south and east of Northome, with Lake Winnibigoshish and dozens of smaller lakes within a few miles of camp. Old Indian battle-grounds, hikes through virgin Norway pine forests, berry picking, hunting Indian souvenirs, wild animal photography and fine bass and pike fishing are special attractions of this resort. Modern log cabins, with screened porches and a large rustic hotel, with 10 rooms (where meals are served), bunkhouses and tents make up the resort. The beach is excellent, ducks, partridge and big game are hunted in season. The lodge opens May 1st and closes December 1st. The post office address is Deer River, Minn. Rates are \$3.50 a day, \$24 a week and \$90 a month, American plan. Special rates for families and half rates for children are offered.

Gemmell

Clear Lake and Dark Lake are near Gemmell, and bass, pike, pickerel and other fish abound. Guides and boats are available. The scenery is delightful in this locality. The Park hotel accommodates summer guests at \$1.50 a day and up.

Big Falls

On the Big Fork river, a tributary of the Rainy River, Big Falls offers good river fishing for pike, pickerel and sturgeon, deer, grouse, partridge and other kinds of game are hunted in season. Guides may be hired for \$5 a day.

Hotel accommodations at the Robinson and the Stockholm are comfortable. The Commercial Club of Big Falls can furnish further information about this region.

International Falls

On the Rainy River, near Rainy Lake, the Canadian boundary, and Kabetogama Lake, International Falls has a beautiful setting. It is surrounded by a forest reserve, and offers opportunities for long canoe trips, launch rides, fishing, camping and other outdoor sports. Hay fever relief. The Rex Hotel, a block from the station, has 90 rooms and is a modern hotel. The Victoria Hotel has 40 rooms and is operated on the European plan.



Resorts on the Northern Pacific Main Line in North Dakota

Medora

Medora lies in the heart of the Bad Lands of North Dakota, known as Pyramid Park (the site of the proposed Roosevelt National Park). Here, on the shores of the Little Missouri River, Theodore Roosevelt ranched. The town was founded by the Marquis de Mores, a romantic figure in the early history of the region. His old chateau, furnished as it was when he lived in Medora, is open to tourists.

Peaceful Valley Ranch, 4½ miles from Medora, is an old time cattle ranch, which accommodates summer guests in neat, rustic cabins and cottages. It is on the wooded shores of the Little Missouri. Home-cooked meals are served in the main ranch house. Nearby is the most extensive petrified forest in this country. Horseback tours to the petrified forest and to dozens of other scenic spots, including the old Roosevelt ranch, may be taken. Hunting. In the evening, there are campfire parties by the river and dancing on the ranchhouse porch. Rates—\$4 a day and \$25 a week (\$35 with saddle-horse). Saddle-horses are rented at \$2.50 a day. Children under 8 years of age are allowed half rates. Season from May 15th to October 1st. Carl Olsen of Medora, proprietor. Thirty guests can be accommodated.

Michigan Resorts

Michigan resorts, on beautiful Isle Royale in Lake Superior, are reached by steamer from Duluth and Superior. The district affords relief to hay fever sufferers.

Belle Isle

The Belle Isle Resort, owned by Fred Schofield, has hotel and cottage accommodations at reasonable rates. Clock golf, tennis, baseball and volley ball in addition to fishing and boating are enjoyed here. The owner will give full information.

Rock Harbor

Rock Harbor Lodge is two blocks from the boat dock. It has a new hotel building and cottages, with accommodations for from 75 to 100 guests. Hiking, hunting for "green stones", cruising, boating of various kinds, tennis, dancing, lake trout fishing and other diversions keep guests here busy and happy. Rates are \$3 to \$5 a day, \$21 to \$35 a week, and half rates for children under 12 years. Boats cost \$1 a day and \$5 a week. The season is June 1st to October 1st. Mrs. Matt Farmer, hostess. Address, after May 1st, is Rock Harbor, Isle Royale, via Duluth, Minn. After October 1st it is 3033 Fremont Ave. So., Minneapolis, Minn.

Tobin's Harbor

The resort at Tobin's Harbor is managed by H. W. Smith. The cool Isle Royale climate, lake and brook trout fishing, and every arrangement for the comfort and amusement of guests is offered. A folder is furnished upon request.

Washington Harbor

Island House, on Washington Harbor, offers fine fishing, boating, tramping and excellent food. Singer & Courtney, proprietors. They will send a descriptive booklet upon request.

The Northern Pacific Railway

Representatives listed below will help you plan your trip

Aberdeen, Wash.	H. H. Griffin	Dist. Frt. & Pass. Agent	
Bellingham, Wash.	A. N. Bussing	General Agent	
Billings, Mont.	J. E. Spurling	Dist. Frt. & Pass. Agent	
	Neil Baird	Trav. Pass. Agent	
Boston, Mass.	C. E. Foster	General Agent Pass. Dept.	
	Jared Jernegan	Trav. Pass. Agent	
Buffalo, N. Y.	C. W. Beardsell	Trav. Pass. Agent	
Butte, Mont., 704 Metals Bank & Trust Bldg.	W. H. Merriman	Dist. Frt. & Pass. Agent	
	J. S. Kemp	General Agent	
Chicago, Ill.	R. J. Tozer	Asst. Gen. Pass. Agent	
	Harry V. Wilmot	Dist. Pass. Agent	
	J. B. Hinkson	Trav. Pass. Agent	
	R. E. Goodemote	Trav. Pass. Agent	
Cincinnati, Ohio.	W. C. Hartnett	General Agent	
	A. L. Placke	Trav. Pass. Agent	
	Geo. F. Knight	Trav. Frt. & Pass. Agent	
Cleveland, Ohio.	B. M. Decker	General Agent	
	L. Householder	Trav. Pass. Agent	
Dallas, Texas.	Charles Sorg, Jr.	Southwestern Agent	
Detroit, Mich.	Geo. Barnes	General Agent	
	J. C. Petres	Trav. Pass. Agent	
Duluth, Minn.	J. I. Thomas	Dist. Frt. & Pass. Agent	
	C. P. O'Donnell	City Pass. Agent	
Everett, Wash.	N. J. Heuchan	General Agent	
Helena, Mont.	E. S. Richards	General Agent	
	Geo. A. Miner	City Pass. Agent	
Kansas City, Mo.	F. A. Acker	General Agent	
	L. B. Heinen	Trav. Pass. Agent	
Lewiston, Idaho.	A. F. Shirley	Trav. Frt. & Pass. Agent	
Los Angeles, Cal.	L. W. Tuttle	Trav. Pass. Agent	
	J. P. Roddy	General Agent	
Milwaukee, Wis.	J. C. McCutchen	General Agent	
	G. Walter Rodine	Trav. Pass. Agent	
Minneapolis, Minn.	G. F. McNeill	Asst. Gen. Pass. Agent	
	H. C. Hasberg	City Passenger Agent	
Missoula, Mont.	R. J. Dee	Trav. Frt. & Pass. Agent	
New York City.	W. F. Mershon	General Agent Pass. Dept.	
	V. L. BeDell	City Passenger Agent	
Philadelphia, Pa.	P. W. Pummill	General Agent	
	L. Herchelroth	Trav. Pass. Agent	
Pittsburgh, Pa.	W. H. Millard	General Agent	
	C. T. Penn	Trav. Pass. Agent	
Portland, Ore., 531 Northwestern Bank Bldg.	A. D. Charlton	General Pass. Agent	
	C. F. Duffy	Trav. Pass. Agent	
	L. E. Beach	City Passenger Agent	
	A. L. Arnold	Agent, Con. Tkt. Office	
St. Louis, Mo., 411 Olive Street, Room 301-3.	R. K. Cross	General Agent	
	C. R. Throckmorton	Trav. Pass. Agent	
St. Paul, Minn.	L. P. Gellerman	Trav. Pass. Agent	
	Geo. W. Moberg	Trav. Pass. Agent	
	5th & Jackson Sts.	M. R. Johnson	City Pass. & Ticket Agent
	H. W. Beyerly	Gen. Immigration Agent	
San Francisco, Cal.	J. L. Norton	General Agent	
	J. F. Simmons	City Passenger Agent	
	H. E. Petersen	Trav. Pass. Agent	
Seattle, Wash.	W. E. Coman	Western Traffic Manager	
	E. E. Nelson	Asst. Gen. Pass. Agent	
	E. L. Carey	Gen. Agt. Pass. Dept.	
	A. G. Kinsman	City Passenger Agent	
Spokane, Wash., 701 Sprague Ave., cor. Wall St.	F. J. Berry	General Agent	
	M. A. Berg	Trav. Pass. Agent	
	E. F. Baird	City Passenger Agent	
	10 South Wall St.	C. E. Arney	Western Industrial and Immigration Agent
Tacoma, Wash.	112 South Tenth Street.	R. T. Bretz	Ass't Gen. Frt. & Pass. Agent
		J. O. McMullen	City Pass. & Tkt. Agent
Vancouver, B. C.	601 Hastings St. West.	W. H. Jaynes	General Agent
	605 Hastings St. West.	C. E. Lang	City Passenger Agent
Victoria, B. C.	912 Government St.	E. E. Blackwood	General Agent
Walla Walla, Wash.	103-4 First National Bank Bldg.	S. J. Miller	Dist. Frt. & Pass. Agent
Winnipeg, Man.	349 Main Street.	J. C. Spracklin	General Agent
		T. J. O'Donnell	City Frt. & Pass. Agent
Yakima, Wash.		H. A. Glen	Dist. Frt. & Pass. Agent
BRAINERD, MINN.	W. H. Gemmell	President M. & I. and B. F. & I. F. Rys.	

A. B. Smith, Passenger Traffic Manager, St. Paul, Minn.

Form 5117—7-24-10M Printed in U. S. A.



MINNESOTA LAKES



NORTHERN PACIFIC RAILWAY
MINNESOTA & INTERNATIONAL RY.
BIG FORK & INTERNATIONAL FALLS RY.