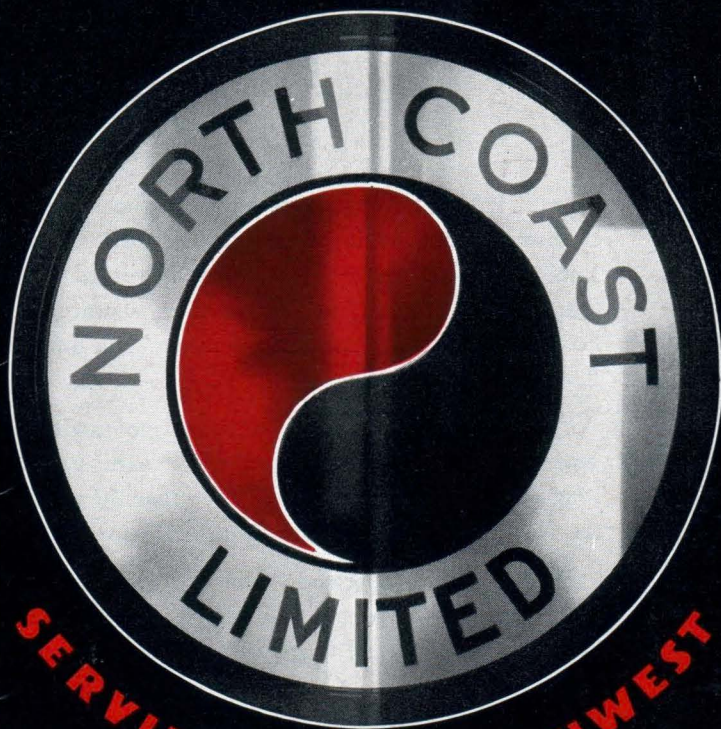


SERVING THE NORTHWEST

*Air-Conditioned...  
Roller-Bearing*



SERVING THE NORTHWEST

*Air-Conditioned...  
Roller-Bearing*

N O R T H E R N N O R T H E R N  
P A C I F I C P A C I F I C  
R A I L W A Y R A I L W A Y



**“THE SCENERY WAS BEAUTIFUL  
AND THE SERVICE ELEGANT”**

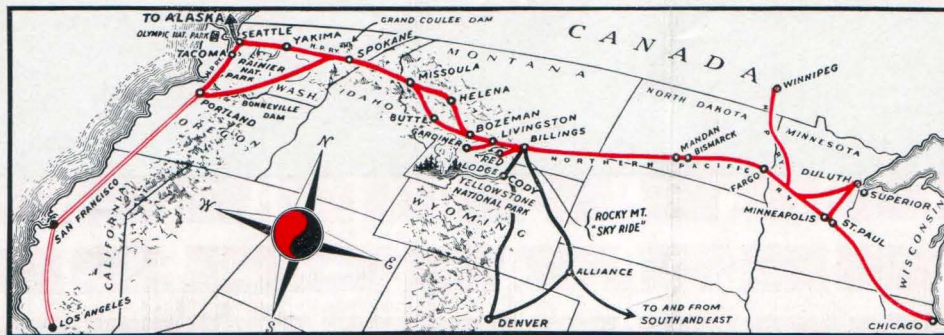
**T**HAT'S how travelers have often expressed themselves after making a trip on the North Coast Limited. Some have commented in detail on "thoughtful train crews," "gracious stewards," "comfortable cars," "magnificent meals" and other features they noticed.

These and other "traits" which have merited praise have been developed by work, care, planning and experience during the more than 40 years the North Coast Limited has been in service.

Having always operated under the same name, it is nationally known as the train which follows the historic Lewis and Clark trail en route to and from western ranches, Yellowstone Park, Rainier National Park, Mt. Hood, Mt. Baker, Olympic National Park, the Pacific Coast and Alaska.

On the North Coast Limited you can travel either by de luxe coach, tourist sleeping car or standard sleeping car and you have an economical range of fares from which to choose. Let us make your reservation on this train. What space would you like, please?

**Route of the  
Air-Conditioned, Roller-Bearing  
NORTH COAST LIMITED**



This train's giant roller-bearing locomotives embody 4,600 horsepower.

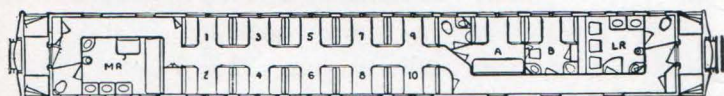
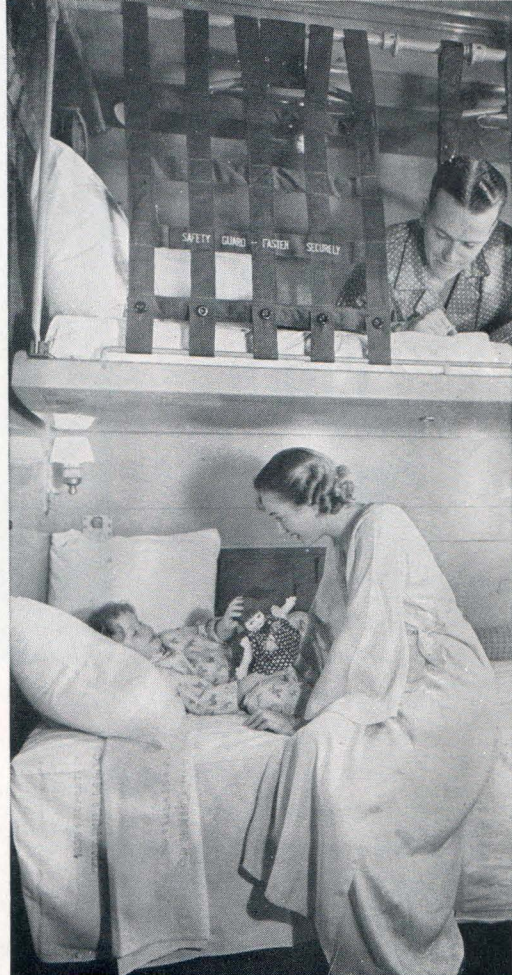
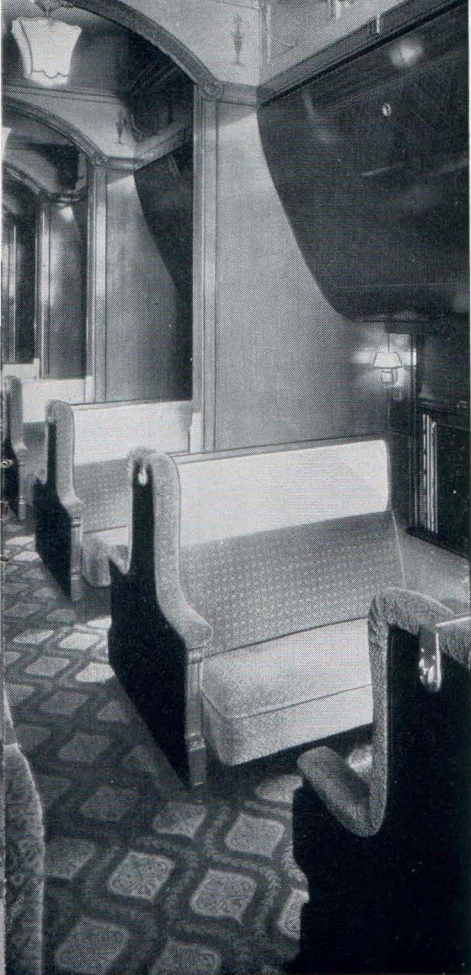




# STANDARD PULLMANS

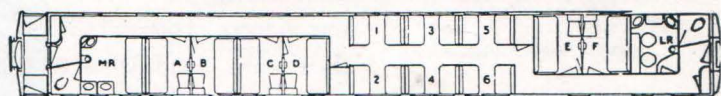
## And Bedroom Cars

**S**TANDARD Pullmans, as restful as they are beautiful, and handsome new double bedroom cars for private room travel at low cost provide de luxe accommodations on the North Coast Limited. Each Standard Pullman has only ten sections, one drawing room and one compartment, assuring more space per passenger. Double bedroom cars contain six sections and six rooms, the latter suitable for use two en suite. Each double bedroom, with sofa, berth, private toilet and washstand, can accommodate as many as two adults and two small children, but is ideal for two adults. For one person the cost is approximately the regular section rate (upper and lower) and for two or more persons, approximately two lower berth fares.



MR—Men's dressing room.  
A—Drawing room.

LR—Ladies' dressing room.  
B—Compartment.



MR—Men's Dressing Room.  
A, B, C, D, E, F—Bedrooms.

LR—Ladies' Dressing Room.  
1 to 6—Regular Sections.

Air-conditioned comfort helps keep children happy all the way.

Ample dressing-room space, with no crowding, starts the day right.

Rooms en suite combine the charms of privacy, ease and convenience.

Double bedrooms permit economical privacy, private meals if desired.





# FAMOUSLY GOOD MEALS



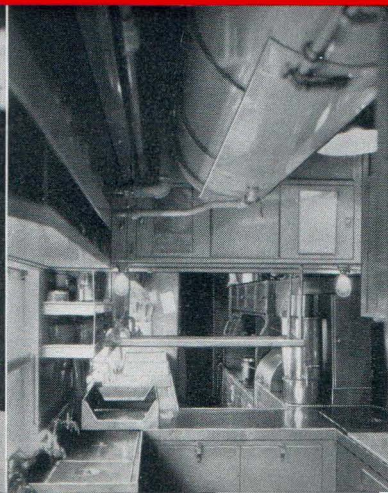
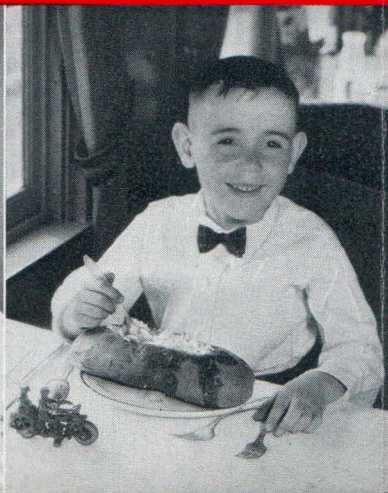
**A**TTENTIVE dining car conductors greet and escort passengers to their tables in the most popular car on the train—the handsome dining car. A new note has been sounded in the interior design of these cars, giving eloquence to simplicity. In their tone and line they serve as assimilative aids to “famously good” Northern Pacific meals which skillful chefs produce almost magically in mysteriously small kitchens. Prime food products of the territory through which the train passes are among the irresistible attractions of the dining cars. Menus range from thrifty plate servings, as low as 50 cents, to sumptuous dinners. Economical tray service is available to tourist car and coach passengers at their seats. Sandwiches 10, 15 and 20 cents; pie, 10 cents; milk, 10 cents; coffee, 5 cents.

Sweet chimes herald “famously good” meals aboard the North Coast Limited.

“Striking it rich” with a Northern Pacific 2-pound Great Big Baked Potato.

In compact dining car kitchens like this, extensive meals are produced.

From steak to dessert, Northern Pacific meals feature prime Northwest products.





# OBSERVATION- CLUB CAR

**F**ULL clear vision of the scenic parade en route is only one of the functions of palatial North Coast Limited observation-club cars. Evening as well as daylight hours are made the more enjoyable by their lounge-club facilities — easy chairs, magazine tables, reading lamps, ladies' lounge, handsome card room, a built-in cabinet radio and a broad observation platform. An obliging barber-valet-porter is in constant attendance. Club service includes barber and beauty shop, shower baths, and soda bar from which light refreshments as well as beverages are dispensed. Lounge-club windows look out upon the procession of natural beauty which delights travelers en route to or from Yellowstone Park, the Dude Ranch country, Rainier Park, the Pacific Coast and Alaska.

Like bridge? You'll find this cozy card room in the observation-club car.

No need to forego your usual shower — an observation-club car bath.

Beverages hot or iced are on tap in the train's soda fountain.

Vacation enjoyment is heightened by the broad observation platform.

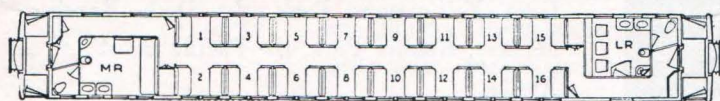






# COMFORTABLE TOURIST CARS

**B**ETTER than standard sleeping cars were a few years ago are the improved North Coast Limited tourist sleepers. These cars supply all required sleeping comfort for overnight travel at a substantial saving, both in cost of railroad ticket and in berth fare. Lower berths are fitted with box spring mattresses. The upholstery is attractive mohair instead of the former tourist car leather. Aisles are carpeted. Individual lamps are provided both in upper and lower berths. The ladies' and men's dressing rooms are commodious and well appointed. One hundred per cent air-conditioning excludes dust and noise and assures a constant supply of air at the right temperature. These cars are highly popular with thrifty travelers who wish essential comforts at the lowest cost. Through tourist sleepers operate daily on the North Coast Limited between Chicago and Seattle and Chicago and Portland.



MR—Men's room.

LR—Ladies' room.

A glimpse of the men's room in the improved tourist sleepers.

Tourist sleeping car berths are attractive, comfortable and economical.

Tray service provides low-cost food for coach and tourist car passengers.





# LUXURIOUS COACHES

**D**E LUXE travel with the advantage of air-conditioning at the lowest fares in the West is enjoyed in the luxurious North Coast Limited coaches. Fully air-conditioned, always clean, quiet and properly ventilated, these coaches are furnished and equipped for comfort. They have individual reclining chairs which give ample room in upright or reclining position. Their deep upholstery is "form-fitting"—a Northern Pacific development. An individual reading light at each pair of seats supplements diffused general illumination. A porter is in charge. Pillows are supplied at a small rental. Adjustable tables are available at seats for work or letter writing. At one end of the main section of the car is a "chummy" smoking room furnished with comfortable leather upholstered chairs. At the opposite end is the ladies' dressing room fitted with mirrors, dressing table, chairs and wash basins.



The smoking room may be enjoyed by both ladies and gentlemen.

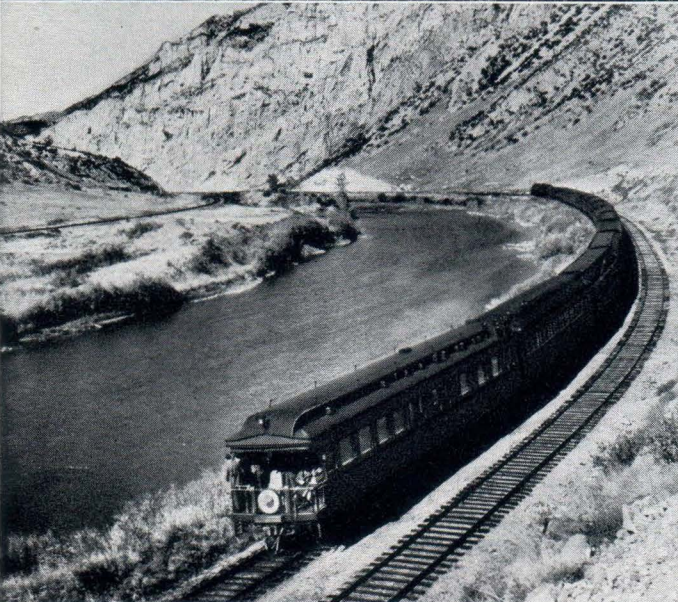
Individual reading light when wanted, without bothering others.

The ladies' dressing room—new coach style—real comfort on the rails.

The coach seats may be adjusted for utmost comfort.







## COMPANION OF MOUNTAINS

**F**OR more than a thousand miles the wild grandeur of Rockies and Cascades accompanies the traveler on the North Coast Limited between Chicago and the North Pacific Coast. No less than 28 ranges of mountains and 1,406 miles of rivers are visible from the train windows, making this one of America's most scenic routes.

**E. E. NELSON**  
Passenger Traffic Manager  
St. Paul, Minn.



## NORTHERN PACIFIC RAILWAY

**"MAIN STREET  
OF THE NORTHWEST"**

