

RIDE-ENGINEERED from roadbed to roof

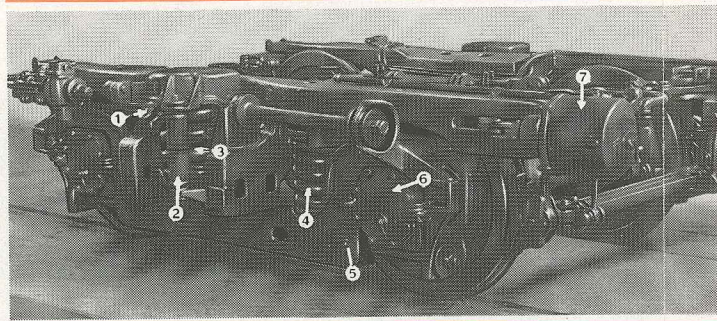
The smooth riding qualities of The Milwaukee Road's Midwest HIAWATHA are the result of the careful balancing of every important factor. These include a seasoned, well-ballasted roadbed, heavy rail, the use of diesel-electric and powerful steam locomotives, and the design of the cars themselves.

The new Midwest HIAWATHA equipment rolls on the exclusive Milwaukee Road type of truck pictured here. Rubber mountings are generously used throughout the trucks, couplers and buffer plates to prevent vibration or noise from passing into the body of the car. In addition, walls, floors

and ceilings are treated with plastic sound deadener and with highly efficient insulating materials. Electrically actuated brake controls of a new type act instantaneously throughout the length of the train and permit exceptionally smooth and rapid stops.

Even at highest speeds, you will find the unusual silence and smoothness of the new Midwest HIAWATHA give an agreeable sense of easy relaxation that makes travel hours pass more pleasantly than ever before.

WM. WALLACE.....Asst. Passenger Traffic Mgr., Chicago, Ill.
H. SENGSTACKEN.....Passenger Traffic Mgr., Chicago, Ill.



1 Lateral shock absorber. 2 Hydraulic shock absorber. 3 Bolster spring. 4 Equalizer spring. 5 Equalizer. 6 Anti-friction bearing. 7 Brake cylinder. This silent and smooth riding truck is specially designed to reduce sidesway. There are lateral shock absorbers, and the bolster springs and hydraulic shock absorbers are placed considerably outside of the wheels for added stability. Brakes are actuated by new electrical controls.

CONDENSED SCHEDULES

Westbound

Eastbound

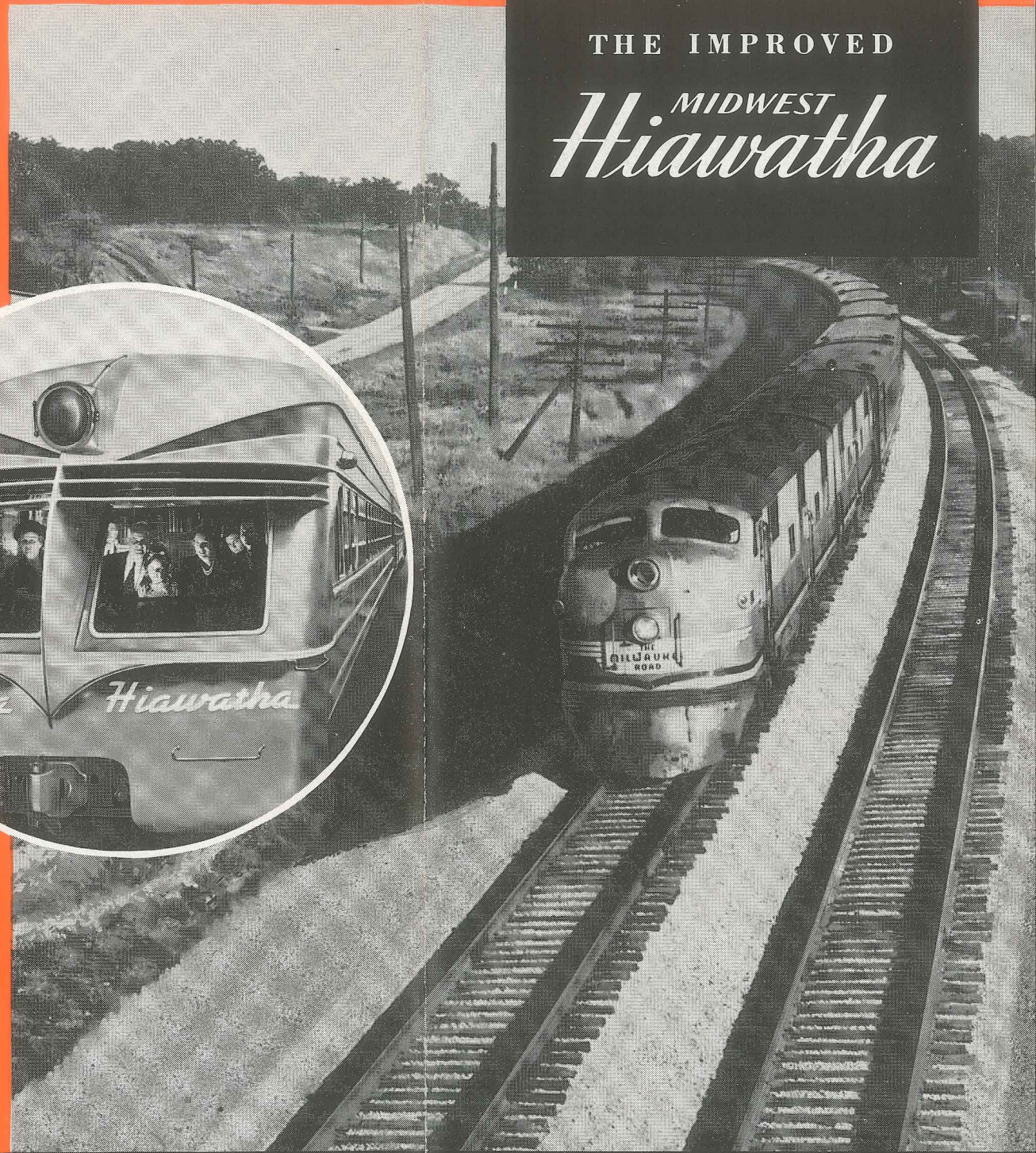
Lv. Chicago	12.50 pm	Lv. Omaha	12.40 pm
Ar. Davis Jct. (Rockford).....	2.09 pm	Lv. Council Bluffs.....	12.54 pm
Ar. Savanna	3.10 pm	Lv. Sioux Falls.....	9.25 am
Ar. Dubuque	4.30 pm	Lv. Sioux City.....	11.40 am
Ar. Marion (Cedar Rapids).....	4.45 pm	Ar. {Des Moines}.....	4.10 pm
Ar. Tama	5.33 pm	Lv. {Des Moines}.....	2.05 pm
Ar. {Des Moines}.....	7.35 pm	Lv. Tama	4.17 pm
Lv. {Des Moines}.....	5.25 pm	Lv. Marion (Cedar Rapids).....	5.08 pm
Ar. Sioux City.....	10.08 pm	Lv. Dubuque	5.05 pm
Ar. Sioux Falls.....	12.25 am	Lv. Savanna	6.39 pm
Ar. Council Bluffs.....	8.56 pm	Lv. Davis Jct. (Rockford).....	7.44 pm
Ar. Omaha	9.20 pm	Ar. Chicago	9.10 pm

EQUIPMENT

Beaver-Tail, Drawing Room Parlor Car between Chicago and Sioux City—Sioux Falls. Drawing Room, Parlor Car between Chicago and Omaha. Tip Top Tap-Diner between Chicago and Omaha, also Sioux City and Sioux Falls. Reclining Seat Lounge Coaches between Chicago and Omaha, also Sioux City and Sioux Falls.

Your Favorite Speedliner is now finer than ever . . .

THE IMPROVED
MIDWEST
Hiawatha



THE MILWAUKEE ROAD

THE MILWAUKEE ROAD



Plenty of space for passengers and luggage in these airy coaches decorated in cheerful, pleasing colors and lighted with fluorescent tubes.



Sink back and relax. The "Sleepy Hollow" chairs are padded with soft foam rubber, have reclining backs and adjustable foot rests.



The Tip Top Tap-diner is open to all passengers. The lounge end, shown here, has booths with deeply upholstered seats.

Luxurious new cars for happier travel hours

MIDWEST
Hiawatha

CHICAGO—CEDAR RAPIDS—DES MOINES—OMAHA—SIOUX CITY—SIOUX FALLS

Ever since its inaugural run in 1940, The Milwaukee Road's Midwest HIAWATHA has been a favorite train through the Corn Belt. In 1948 this daytime Speedliner was re-equipped — made finer than ever to make your travel time even more delightful!

The improved Midwest HIAWATHA embodies a host of advances in engineering, design and construction. Its smoothness, silence and comfort are based upon the knowledge and experience gained through more than *twelve million miles* of Hiawatha operation.

At the head of the train are brand new coaches with alternate cars upholstered in contrasting color schemes of lime and burgundy, green and gray. The "Sleepy Hollow" reclining chairs are padded with soft foam rubber and have adjustable foot rests. There are wide luggage racks and glare-free fluorescent lighting. Each car has an exceptionally spacious men's lounge, and a charmingly colorful and dainty lounge for women.

The new Tip Top Tap-diner was designed expressly for service on the Midwest HIAWATHA. There is a fully equipped galley for the preparation of appetizing a la carte and table d'hote meals. The cheerfully decorated dining section has seats for 32. The remainder of the car is occupied by a gay

cocktail lounge with variously shaped booths and tables. The dining and lounge sections are open to all passengers on the train.

The first parlor car is brand new and contains a new type drawing room with an enclosed lavatory. The seat section can be made up into a standard berth—a unique Milwaukee Road feature. The body of this car contains 32 reclining arm chairs on swivel bases. There is a small drop-leaf table beside each seat.

The last car on the Midwest HIAWATHA is a Beaver Tail parlor car. In addition to the conventional seating arrangements in the body of the car, it has a delightfully comfortable smoking and lounge room in the streamlined after end.

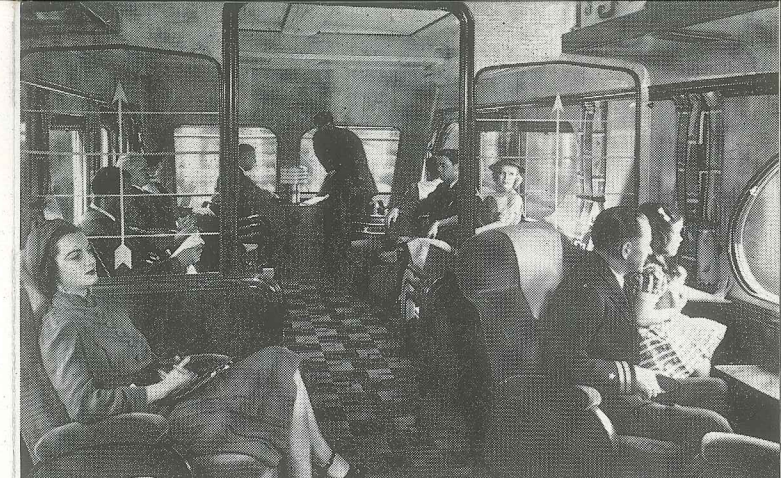
All cars on the Midwest HIAWATHA are air conditioned to provide year 'round cleanliness and comfort. Concealed loud speakers are used for station announcements, and also permit passengers to enjoy radio entertainment.

Midwest HIAWATHA equipment operates as a unit east of Manilla. West of Manilla, one train serves Council Bluffs-Omaha, the other serves Sioux City and Sioux Falls. For details of equipment, see information on back page of this folder.



Left—The women's lounge has walls of pale green plastic decorated with colored fashion prints. There is a comfortable sofa for four and plenty of mirrors.

Right—The exceptionally large men's lounge is divided into separate lavatory and smoking sections, and has a 110-volt outlet for electric razors.



The Beaver Tail observation lounge is open to all parlor car passengers. It has comfortable arm chairs and a big sofa facing the rear windows.



The luxurious parlor car seats may be faced in any direction. A small drop-leaf table beside each chair is for magazines or writing materials.



Appetizing Milwaukee Road meals are the chief attraction here, but you'll also enjoy the smart decorative scheme of the restaurant section.