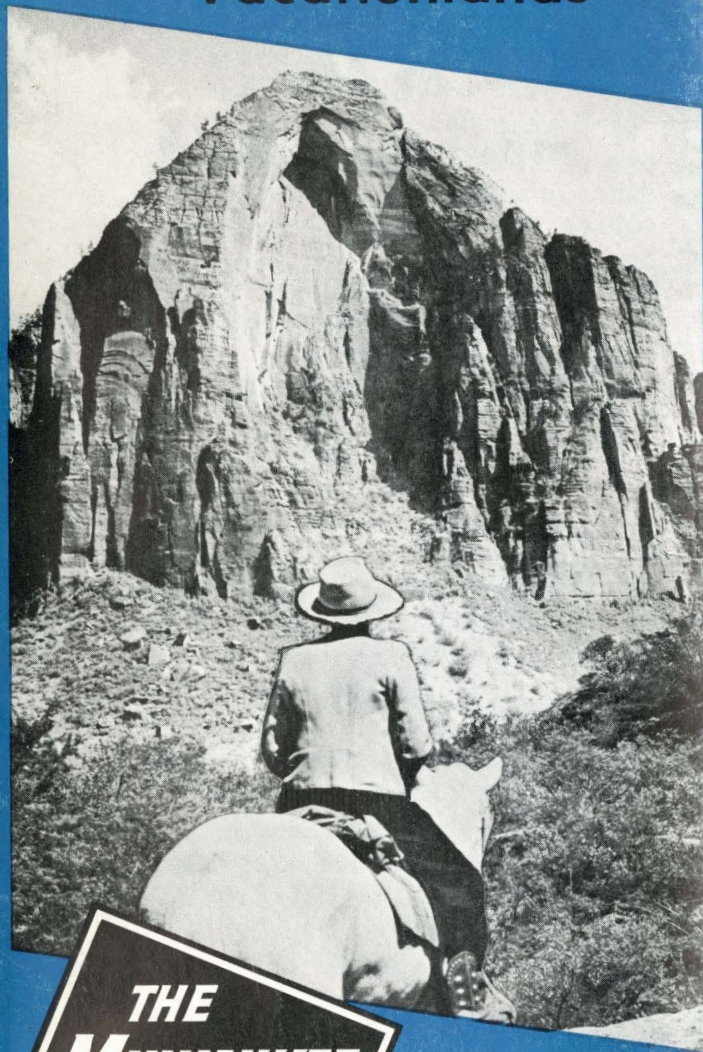


COLORADO UTAH

and other Mountain
Vacationlands

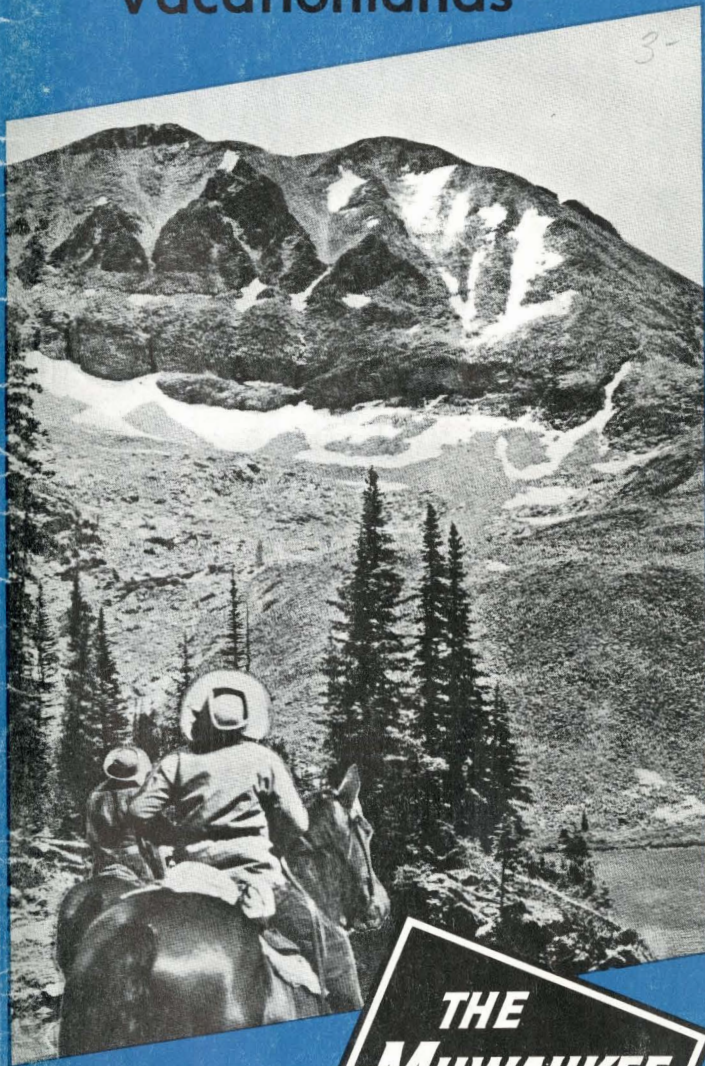


**THE
MILWAUKEE
ROAD**

*Red Arch Mountain in
Zion National Park*

COLORADO UTAH

and other Mountain
Vacationlands



**THE
MILWAUKEE
ROAD**

*Rictofen Mountain in
the Colorado Rockies*



The spacious world of the mountain West

This Milwaukee Road travel brochure presents to you a land that is at once enchanted and exciting, serene and challenging.

It pictures and describes the highlights of the mountainous central West from the east slope of the Rockies to the California border. Included in its scope are Colorado, parts of Wyoming and Idaho, Utah, some of Nevada and the northwest corner of Arizona.

Here is an empire larger than any European country except Russia. Here is a land with progressive cities and ghost towns . . . with farms and cattle lands . . . with irrigated valleys and deserts . . . with vegetation ranging from cactus and sagebrush to dense forests of conifers. But dominating it all is a vast complex of mountain ranges with more than a thousand peaks towering over two miles into the blue, western sky.

This is a vacationland with such an immense variety of riches that it can delight people of all ages and of the most varied tastes. And it is an

- *The gateway rocks of the Garden of the Gods near Colorado Springs from mighty Pike's Peak.*

accessible land that you can reach swiftly, comfortably and at moderate cost on the famous Western "CITIES" Streamliners. These through trains are operated by The Milwaukee Road between Chicago and Omaha; then on the Union Pacific and Southern Pacific.

Here are your trains. Via The Milwaukee Road and Union Pacific: the Streamliner CITY OF DENVER for Colorado . . . the Domeliner CITY OF PORTLAND for Sun Valley and Oregon . . . the Domeliners CITY OF LOS ANGELES and THE CHALLENGER for Salt Lake City, Southern Utah, Nevada and California. Via The Milwaukee Road, Union Pacific and Southern Pacific, the Streamliner CITY OF SAN FRANCISCO. Flexible planning enables you to start on one train, make a stop-over at any desired point and resume traveling on another. You can circle the West, going one way and returning over a different route.

The various side trips and sightseeing tours described here can be made at moderate cost in comfortable motor coaches. And, of course, drive-yourself cars are available at many points.

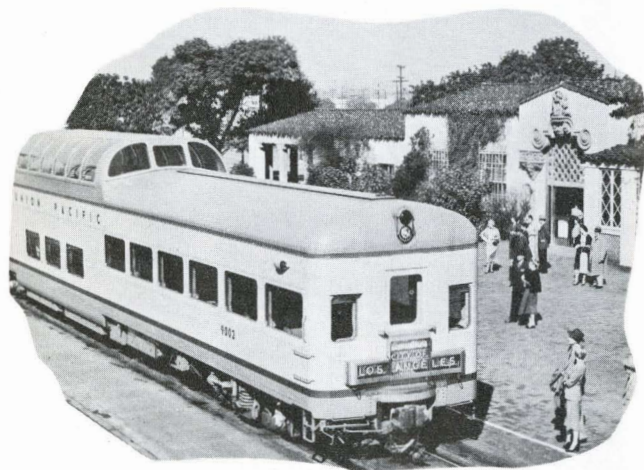


From your seat in a dome-diner on two of the "CITIES" trains you can enjoy the beauty of the American West.

Smartest setting for dinner en route—the Gold Room on the lower deck of a dome-diner.



A club-lounge car is a delightful spot to read, chat, relax or enjoy a refreshing beverage.



Dome cars similar to this are carried on three of The Milwaukee Road's Western "CITIES" Streamliners.





- *Taylor Peak looms up behind lovely Loch Vale in Rocky Mountain National Park.*

the 10,000 foot level, the highest registered yacht club in the world, the nation's largest sand dunes—the superlatives could be carried on indefinitely.

But, first and foremost, Colorado is a magnificently beautiful land offering an endless variety of opportunities for outdoors enjoyment.

There are countless miles of trails for riders and hikers . . . skyline roads where every turn opens vistas of new enchantment . . . mile upon mile of racing, snow-fed streams plentifully stocked with trout. There are ghost towns and mining camps to explore . . . green meadows tapestried with flowers, and dark forests that stretch endlessly over the ranges. You can go climbing on "easy" mountains or ones that would tax the skill of a Swiss guide. You can explore modern cities or prehistoric ruins where the long centuries look down on the homes of the earliest Americans.

Colorado . . . the heart of the Rockies

With an area of over 100,000 square miles, Colorado has an average elevation of about 6,800 feet—the highest of any state in the Union.

The mountainous area of Colorado is six times that of Switzerland and there are 52 peaks over 14,000 feet as against only nine in the Swiss Alps. The State has the highest automobile roads on the continent and some of the world's highest railroad passes. There are hundreds of lakes above

- *Thousands of miles of riding trails through scenic country offer happy hours in the saddle.*



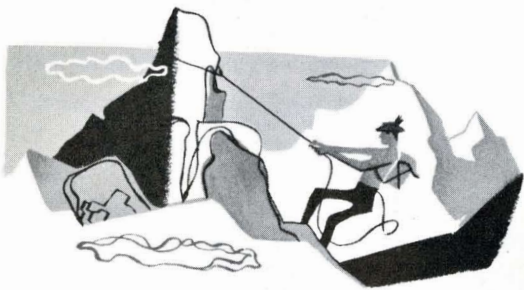
You'll find Colorado's climate an invitation to activity. The long summer days are filled with sunshine, the air is crisp and dry, the nights cool and clear. Many people vacation here chiefly because of the tonic effect of the invigorating air, or because they seek relief from hay fever.

And don't forget Colorado's winter appeal. Deep, powder snow and marvelous open slopes have made a skier's heaven of the areas around Berthoud and Rabbit Ears Passes, Gunnison, Arapahoe, Aspen and many more. Facilities and accommodations are unexcelled.

Denver . . . City in the sky

As you approach by rail from the east, the great rampart of the Rockies is visible for a hundred miles. A brief final climb and you are at Denver with the steps of its gold-domed State Capitol at an altitude of exactly one mile.

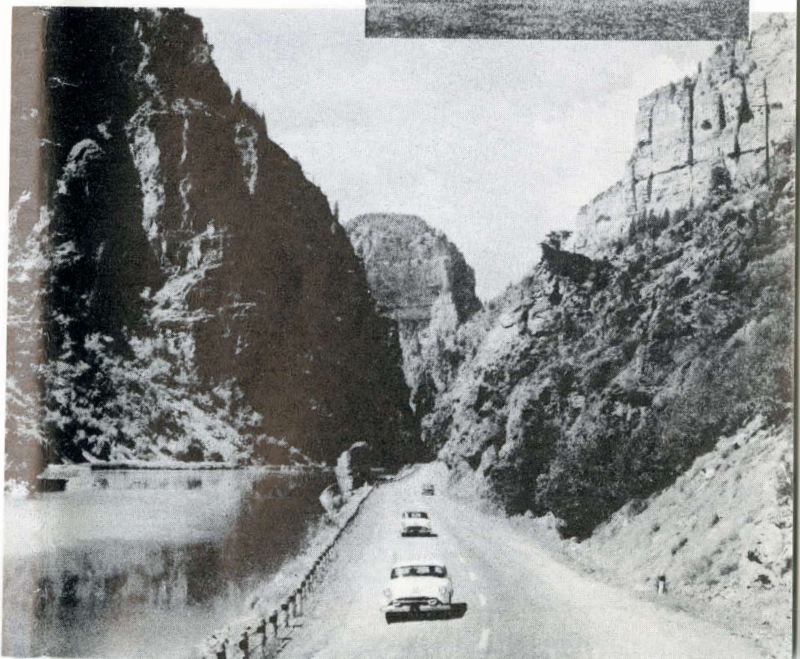
Denver is the gateway to a host of National Parks and Monuments. But it is more than that. It is a city so beautiful and interesting in its own right that you will want to spend some time visiting its attractions.

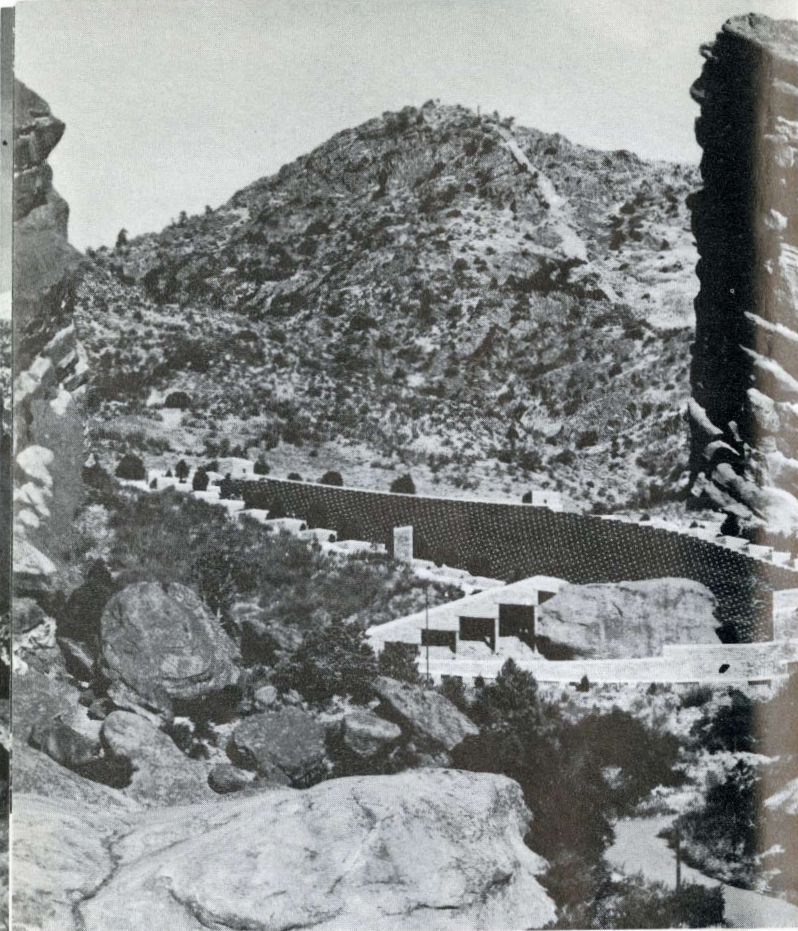


The historic mining town of Central City now offers an added attraction — a summer opera season.

The City and County Building of Denver is typical of the handsome municipal structures.

Colorado's mountain highways are famous. Here U.S. 6 and 24 enters dramatic Glenwood Canyon.





- *The outdoor stadium in Park of the Red Rocks near Denver is famed for its superb acoustics.*

of 100 miles of the Rockies. Another goes out through Golden, with its famous Colorado School of Mines, and over the Lariat Trail to Lookout Mountain with the grave of Buffalo Bill Cody. Other popular tour objectives are the mining town of Central City . . . Mt. Evans where you travel 14,260 feet above sea level on the loftiest road in North America . . . Echo Lake, Troutdale, Evergreen and Bear Creek Canyon. Close to the city is Red Rocks Park with a magnificent natural amphitheater widely known for its superb acoustics. Boulder, home of the University of Colorado, is only about 30 miles northwest of Denver. A little farther away are the attractive cities of Greeley and Fort Collins.

Rocky Mountain National Park

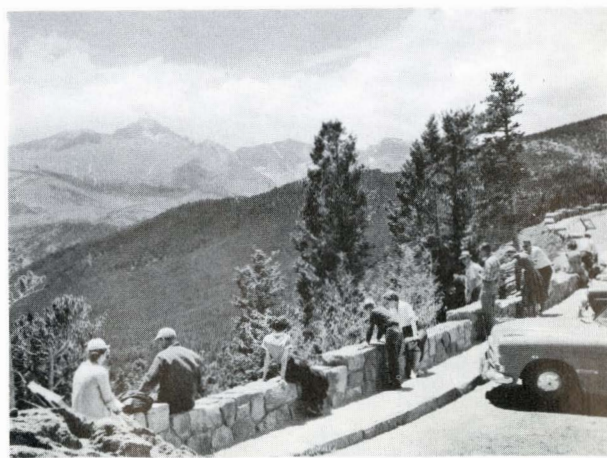
In addition to thousands of beautiful homes and the Capitol, Denver has City and County Buildings, the United States Mint and Customs Building, the Colorado Museum of Natural History and Denver University. Its Civic Center includes an open-air theater for 9,000 and there are over 40 city parks. Hotel and restaurant facilities are excellent.

A number of delightful sightseeing tours are available either in private cars or in buses. Most of them include some of Denver's famous Mountain Parks, 150 square miles of scenic playgrounds connected by over 100 miles of highways.

Tours range from an hour and a half to all-day excursions. Even the shortest—Denver city tour—includes Mountain View Park with a panorama

Set astride the Continental Divide, this 400 square mile upland is something not to be missed whether as an interesting side trip from Denver or as a vacation objective in itself.

- *Trail Ridge Road is a highway in the sky that offers an unending series of glorious panoramas.*



- *Chasm Lake lies below the nearly vertical east face of monumental Long's Peak.*



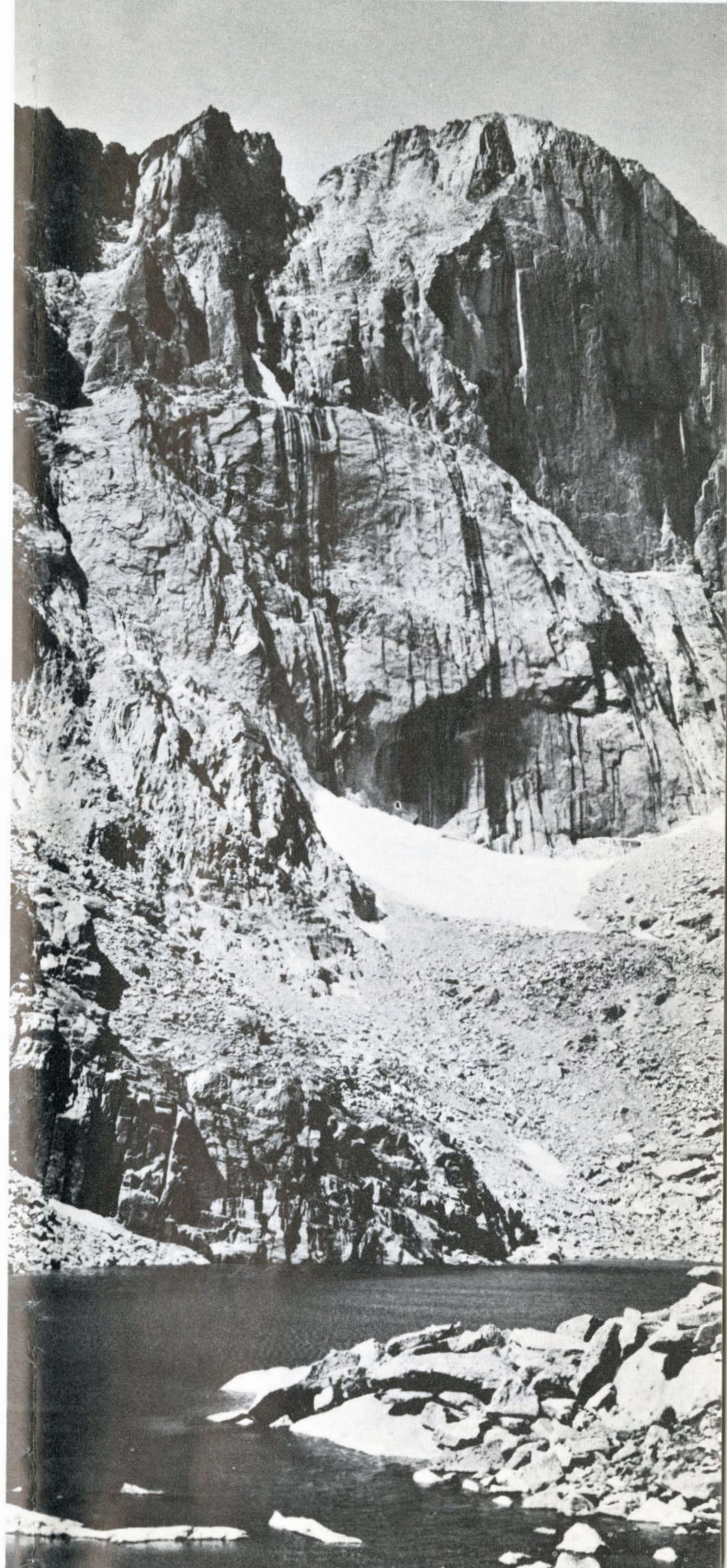
Dominated by 14,225-foot high Long's Peak, Rocky Mountain Park is a labyrinth of deep valleys and lofty ranges. Lacy waterfalls leap down rocky escarpments and join the rivers that race through almost every valley and canyon. There are beaver meadows where the deer and elk browse at evening, and remote ridges that are the home of big horn sheep.

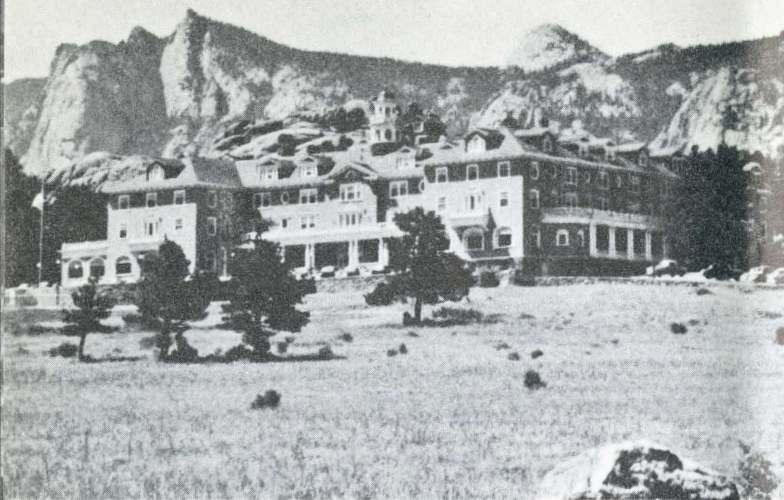
Trail Ridge Road that crosses the Divide at 11,800 feet surely ranks among the world's most scenic mountain highways. Another is Bear Lake Road with its views of Dream and Emerald Lakes, of Tyndall Glacier and Loch Vale. A hundred varieties of birds sing in the sunny glades and wild flowers dot the mountain meadows. Colorful miniature flowers catch the eye even above timberline.

At the west end of the Park is Grand Lake village with its two mile long lake a mile and a half above sea level. Here is the highest yacht anchorage with a club that sponsors a mid-summer regatta.

Scattered through the region are many resorts offering accommodations, saddle horses, guides and fishing equipment. You can take a pack trip, fish the clear, cold lakes and streams, go camera hunting for big game or just take it easy and revel in the glory of the mountain country.

Rocky Mountain Park has limited accommodations open through the year, but the official season is from mid-June to the latter part of September.





- *Estes Park village offers a variety of accommodations including the comfortable Stanley Hotel.*

Estes Park

Estes Park, at an average elevation of 7,500 feet, is three-quarters surrounded by Rocky Mountain Park. Its village is therefore an ideal headquarters for exploring the region. There are excellent hotels, resorts and lodges, stores and churches, a motion picture theater, auditorium, a golf course, swimming pool and stables for riding horses.

Estes Park village is situated at the confluence of Big Thompson and Fall Rivers, and is a junction point for almost every motor road leading into Rocky Mountain Park.

With several national forests in the area, many visitors become interested in the various species of trees. Commonest are ponderosa and lodgepole pine, Douglas fir and the famous Colorado blue spruce. At higher elevations, these give way to Engelmann spruce, birch and alpine fir. Another

- *Penrose Stadium at Colorado Springs is the site of the "Pike's Peak or Bust" Rodeo each August.*

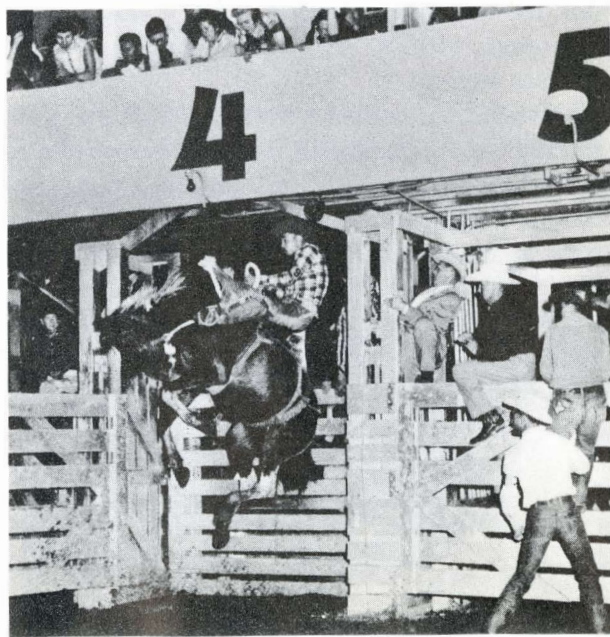
favorite is the aspen that girdles the lakes with a golden blaze in autumn.

Timber line in the park area is at about 11,000 feet. Trees become gnarled and stunted, twisted by the roaring gales of the high places. Above the line, vegetation consists of tough grasses, then of moss and lichens.

Motor bus service from Denver reaches Estes via Boulder, Longmont and Big Thompson Canyon, or via South St. Vrain Canyon and Long's Peak. A two day Grand Lake Circle tour from Denver covers the entire area in a run of 240 miles to Estes Park, across the Divide to Grand Lake, then circling back over Berthoud Pass to Idaho Springs and Denver. In addition to the regular bus service, a variety of special sight-seeing tours are available covering Estes and Rocky Mountain parks, Clear Creek Canyon, the mining town of Central City with its famous Opera House, Lookout Mountain and the Lariat Trail.

Colorado Springs

Turn south from Denver for 75 miles and you arrive at Colorado Springs in the heart of a vaca-





- *Just look up Pike's Peak Avenue in downtown Colorado Springs and you see the famous mountain.*

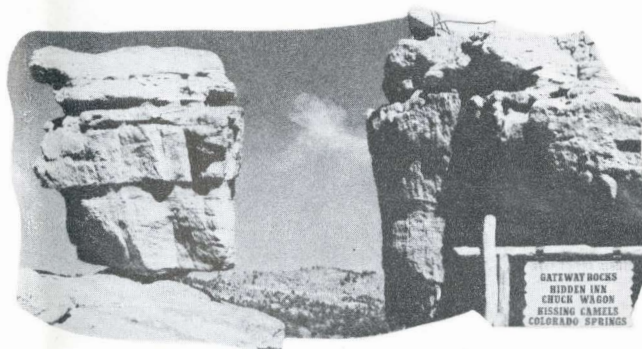
tion area quite different from the wild and rugged mountain parks. This trip can be arranged without extra cost as a part of your rail ticket. You can return to Denver, or continue your trip westward from Colorado Springs.

The home of Uncle Sam's new Air Force Academy, Colorado Springs lies on a high plateau with the mountains just to the west. The summer climate is delightful and the city is extremely well organized to handle the great volume of vacationists who enter its gates. There are plenty of modern hotels, a busy shopping section, fine parks and a host of attractions within twenty miles, all served by an excellent network of roads. Facilities are available for golf, tennis and swimming as well as the usual western sports of fishing and mountaineering.

What else would you like to do? There is ice skating at the Broadmoor Ice Palace, and an Ice Revue each August. There is a big rodeo also in August and a golf tournament; dog racing

through most of the summer; theaters and outdoor musical events; archery, shuffle board and roque in the city parks; even the famous Pike's Peak Auto Race. There is an excellent Fine Arts Center and a Pioneer Museum.

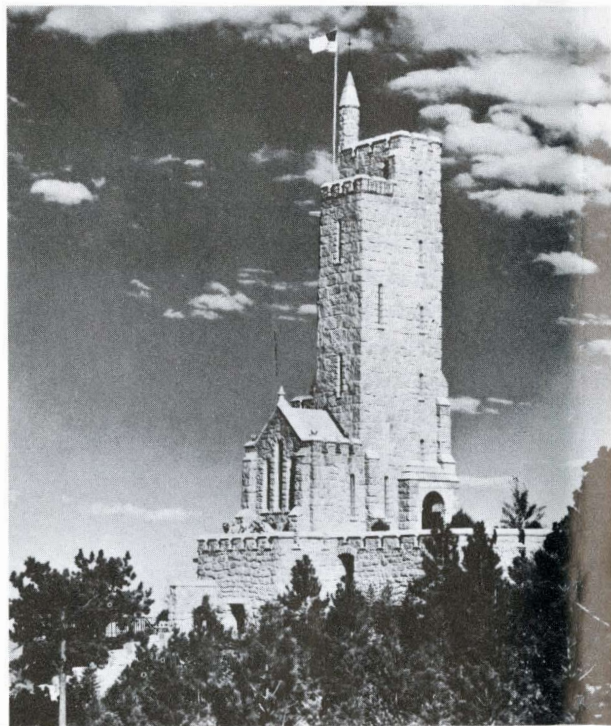
A great number of sightseeing tours are available ranging from a little over three hours to all day. Several hotels and tour companies offer "package" all-expense tours of from one to four days that cover all the nearby attractions.



- *Balanced Rock stands just ahead of the bow of Steamship Rock in the Garden of the Gods.*



The diesel-electric cog railroad takes visitors on a scenic trip to the very top of Pike's Peak.



The handsome Will Rogers Shrine of the Sun is on Cheyenne Mountain just outside Colorado Springs.



Pike's Peak

If there is a single mountain in the country known above all the rest, it is Pike's Peak, located by Lieutenant Zebulon Pike in 1806 and declared by him to be unscalable. So famous is the Peak that many visitors are amazed to learn there are 25 Colorado mountains surpassing it in altitude.

Each summer, tens of thousands of people travel to the very top of "unscalable" Pike's Peak—and they even have a choice of routes. You can travel over a good mountain highway or you can go via the diesel-electric Pike's Peak Cog Railway, the highest in the world. Whichever you choose, you'll find it a breath-taking experience, and you'll stand on the 14,110 foot summit with an astonishing panorama of the west around you. From the peaks of the Continental Divide of the Rockies 100 miles to the north, to the jagged Sangre de Cristos in the south, a sweep of your eyes can cover an area of nearly 60,000 square miles.

For more mountaineering the easy way, you can go to Cheyenne Mountain. Stop off part way up at the handsome zoo. Higher up, at the 8,000 foot level, stands the graceful Will Rogers Memorial Tower of pink Colorado granite. The 9,500 foot crest of the mountain is 4,000 feet above Colorado Springs and offers a magnificent view of the countryside.

Garden of the Gods

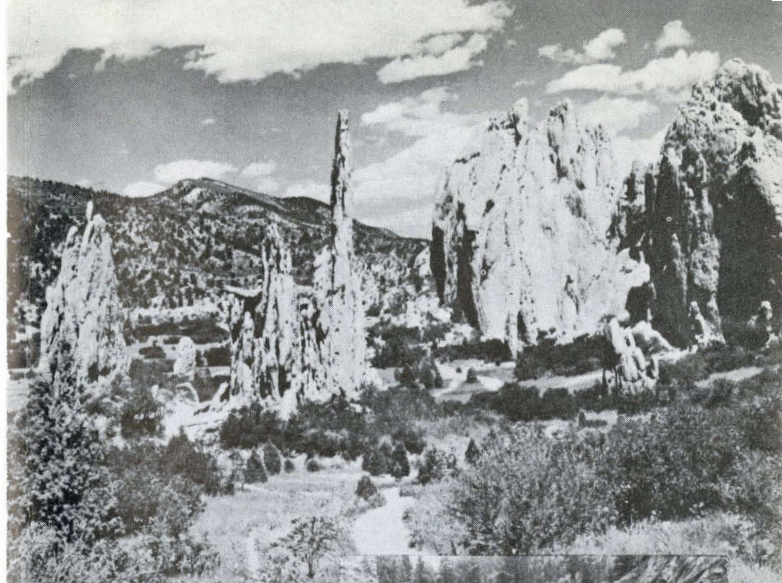
A short drive out Mesa Road from Colorado Springs brings the visitor to one of the world's most spectacular city parks—the famed Garden of the Gods. 370 acres of rolling mesa contain an amazing cluster of wind- and weather-eroded sandstone formations ranging up to skyscraper size. You see Kissing Camels, Indian Head, Balanced Rock, Scotsman and Cathedral Spires where an Easter sunrise service is held.

The deep red sandstone, here and there slashed with veins of golden yellow, glows in the sun and makes marvelous color pictures. There are picnic tables and grills in the Park as well as Hidden Inn with its roof-top observatory.

Other short drives take you to Manitou Springs at the foot of Manitou Mountain . . . to North Cheyenne Canyon where Army troops stage rock climbing demonstrations twice a week on the granite walls . . . to lovely Seven Falls and Helen Hunt Falls . . . through Williams Canyon to the Cave of the Winds. Monument Valley Park, also maintained by the city, has a wide variety of recreational facilities. A little farther afield over the Gold Camp Road is the famous mining town of Cripple Creek.

Some 45 miles south of Colorado Springs lies the town of Pueblo on the Arkansas River. To the west of it is the famous Royal Gorge near Canon City. In the extreme southwestern corner of the State is Mesa Verde National Park with its well-preserved cliff dwelling dating back about a thousand years.

- *You travel this serpentine highway enroute to Cave of the Winds in Williams Canyon.*



Slender spires and huge monoliths of red sandstone create a magical landscape in the Garden of the Gods.

Seven Falls is one of the scenic highlights in South Cheyenne Canyon near Colorado Springs.





Luxury Service to Colorado

The nearest of the great western mountain regions, Colorado is reached quickly, comfortably and economically by rail.

The Streamliner CITY OF DENVER leaves Chicago's Union Station in the late afternoon via The Milwaukee Road and arrives in Denver the following morning.

Air conditioned and smooth riding, this fine train carries the latest type Pullmans with open sections, roomettes and bedrooms. Seats are reserved in leg rest coaches with plenty of luggage space and attractive lounge-dressing rooms.

The beautiful diner features a varied menu of moderately priced table d'hote meals and a la carte selections. There is also a lounge car with random tables and overstuffed chairs that is the perfect spot for a beverage or a friendly visit.

You may, of course, continue west from Denver or other Colorado points to Salt Lake City, Yellowstone Park or California.

Information about the other Western "CITIES" Streamliners via The Milwaukee Road is given on the last pages of this booklet. You will also find there a list of representatives who will be glad to provide full details about train service and help lay out the itinerary for your entire trip.



The club-lounge car for Pullman passengers on the CITY OF DENVER. The famous "Pub" car is open to all riders on the train.

Bedrooms with two spacious and comfortable berths have complete private facilities.

Guests on the Streamliner CITY OF DENVER dine in these delightful surroundings. Menus are exceptionally varied.



Coach seats with full-length leg rests enable you to stretch out comfortably.

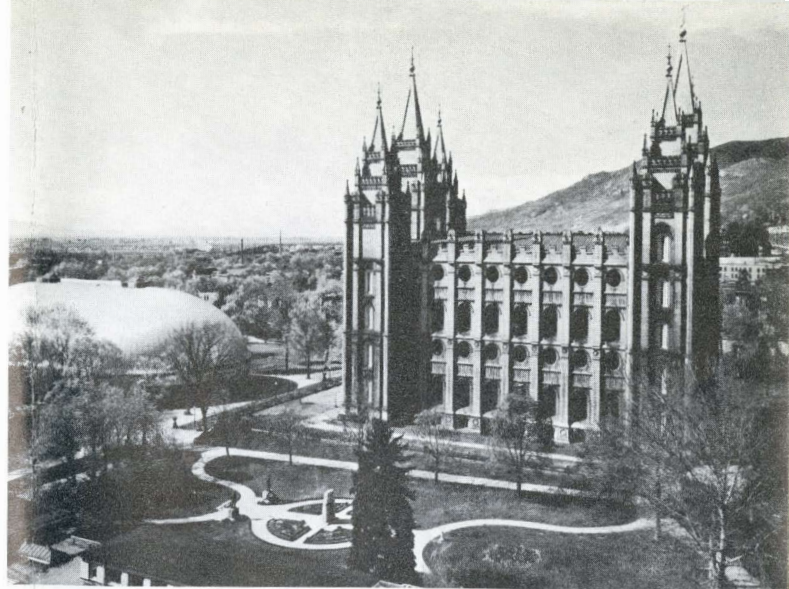
Salt Lake City, Utah

Though its average elevation is quite high, and though it boasts such major ranges as the Wasatch and Uinta Mountains, Utah is a relatively "open" western state. Rainfall in most areas is rather scanty but the fertile land produces bountiful crops under irrigation. Variations in altitude and rainfall cause the vegetation to range from Sonoran desert types to sub-arctic.

Considerable parts of Utah were originally settled by the Mormons whose covered wagons trekked west from winter quarters on the Missouri in 1847. Their leader, Brigham Young, must be credited with remarkable vision in selecting the seemingly arid valley around what is now Salt Lake City as the "promised land" for the Latter Day Saints.

Salt Lake City is not only the capital of the State, but the principal city of the inter-mountain region. Lying on the lower slopes of the granite Wasatch Mountains, it overlooks a green, irrigated valley producing a variety of crops.

There are fine hotels, attractive parks and residential districts, and the imposing State Capitol. Undoubtedly the number one tourist attraction is Mormon Square. Here is the gray, pin-naled mass of the Temple and the smaller Tabernacle with its unusual barrel-vaulted roof and an exceptionally fine pipe organ. There is



The famous Temple dominates Mormon Temple Square. The low building to the left is the Tabernacle.



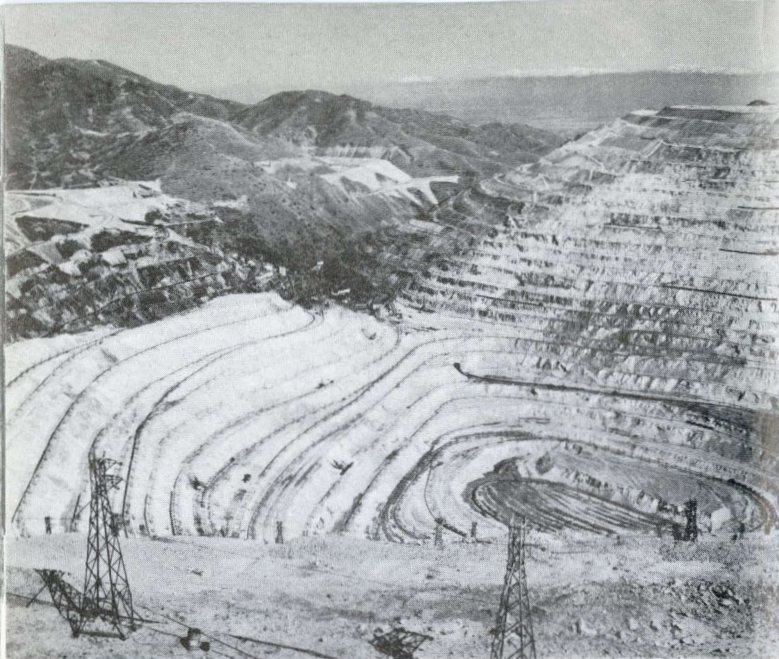
an administration building, the historic Lion and Beehive houses and the Deseret Museum. The Seagull Monument on the Square commemorates an occasion when a great flight of gulls from Salt Lake saved the crops from destruction by a plague of grasshoppers.

America's "Dead Sea"

Numerous tours are available in Salt Lake City covering the attractions of the town and the nearby area. Most of them include a visit to

- *Looking down South Main Street in Salt Lake City toward the rugged Wasatch Mountains.*





Ore trains are dwarfed on the tracks following the terraces of Bingham Mine near Salt Lake City.

Great Salt Lake, a remnant of prehistoric Lake Bonneville. You'll have time for a swim in waters so salty that you literally can't sink. You also see the salt flats and part of the old Mormon Trail.

Other tours are through the spectacular gorge of Big Cottonwood Canyon to Brighton. On this trip, you have an opportunity to ride the 4,000-foot lift to the top of Mt. Millicent—popular with camera fans for spectacular scenic views.

Another tour objective is Bingham Canyon, a mining town that is just one street wide. You visit the world famous Utah Open Cut Copper Mine, usually in time to see one of the blasting operations. This tremendous pit contains many miles of railroad tracks for handling the ore. This, again, is a spot that delights photographers.

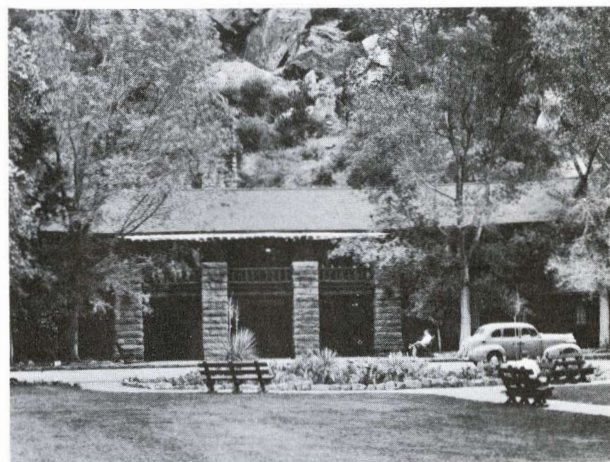
Not far from Salt Lake City is Ogden, second city of Utah, Provo on Utah Lake and the mining towns of Park City, Tintic and Alta, the latter well known as a skiing resort. You'll find plenty to see and do around Salt Lake City.

Utah-Arizona Parks

This interesting area may be visited as an extension of your trip to Colorado or Salt Lake City, as an objective in itself, or as a stopover enroute to California.

Cedar City, Utah, terminus of a Union Pacific branch line from Lund, is the starting point for motor tours operated by the Railroad covering scenic areas unlike any others on our continent. Only their isolated location has kept them from world renown, yet you can visit them very easily either from Salt Lake or en route to California. Excellent accommodations are provided at Cedar City and in the Parks by hotels and lodges built by the Union Pacific and operated by the Utah Parks Company. All rates are approved by the National Park Service.

In this land are color contrasts ranging from the subtle to the stunning that defy description. Here is a land in giant scale where eons of patient erosion by wind and water has revealed millions of years of the story of creation.



Zion Lodge is typical of the attractive Park hotels built by the Union Pacific.



Here you are on the East Rim of Zion Canyon looking into the National Park.

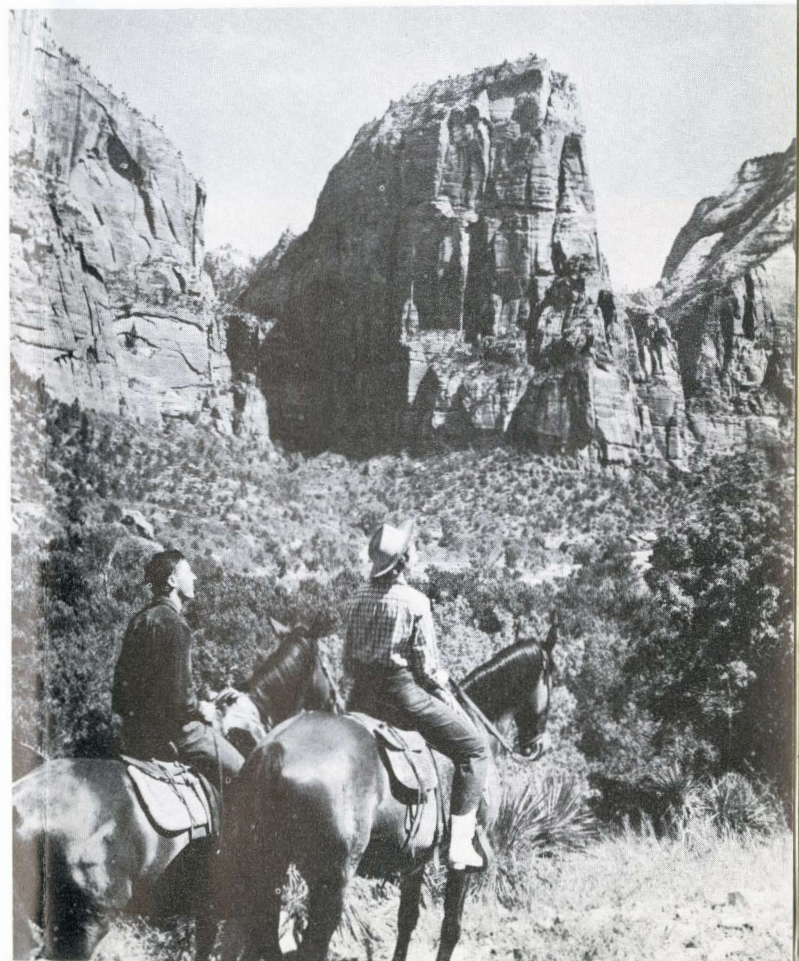
Zion National Park

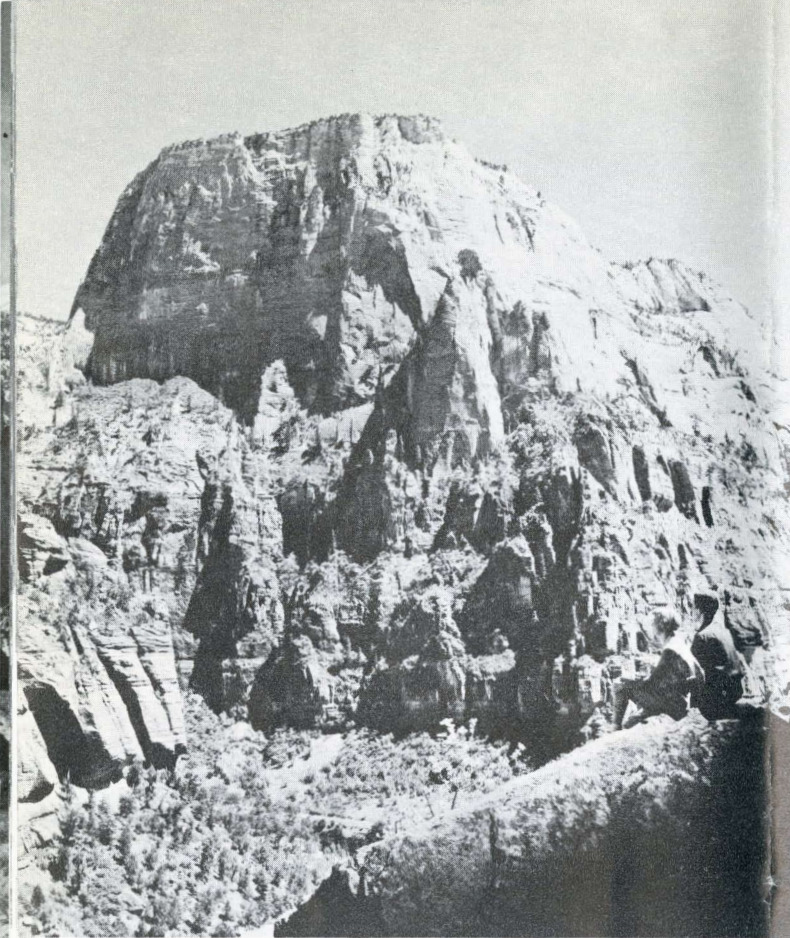
Originally named "Little Zion Canyon" by the Mormons who discovered and settled it, Zion was carved from the sandstone plateau by the Rio Virgin and several feeder streams. It is an irregular canyon containing huge, isolated peaks of harder rock. The subdued colors are mostly in pastel shades ranging from purplish reds through light browns and rosy buffs to almost pure white. As in most of this country, there are willows and cottonwoods along the streams with a scantier covering of piñons and junipers on the slopes.

Park headquarters are near the south end of the canyon. As you travel northward you see East Temple, Mountains of the Sun, Three Patriarchs, the Great White Throne, Angels Landing, Weeping Rock and Temple of Sinawava.

The Great White Throne rises almost 2,500 feet from the canyon floor. Its lower levels are dark red with the entire upper section a chalky

- *From the floor of Zion Canyon, these riders look up at massive Angel's Landing.*





● *From just off Zion's West Rim Trail, visitors get this view of the colorful Great White Throne.*

to over 9,000 feet and consists largely of ponderosa pine, fir, spruce and some aspen. There is very little underbrush beneath the dense trees so that the forest floor looks remarkably clean and park-like. You will probably see black-tail or mule deer and, if you are sharp-eyed, the famous white-tailed Kaibab squirrel. This stocky, gray fellow has long, tufted ears and a bushy, pure white tail. He is found only in this area, though he has a tufted-eared cousin living south of the Grand Canyon.

The Grand Canyon of the Colorado

The mere measurements of the canyon are imposing but they cannot suggest its wild grandeur and ever-changing beauty. More than a mile deep, the gorge is from four to eighteen miles wide and is 280 miles long from Marble Canyon on the east to Grand Wash on the west.

Actually, the canyon is a tangle of interlaced side canyons and contains mountains, buttes and plateaus of its own. Most of the rock was laid down by water, though some is volcanic in

white. The flat, inaccessible top is crowned with evergreens dwarfed by distance.

The canyon may be viewed from its green floor on short trips north and south from Zion Lodge. If you prefer, you may join a friendly guide and ride up winding trails to the rim.

You leave Zion by the famous Mt. Carmel Highway, a mile of which is actually a tunnel just within the wall of a cliff. Windows cut in the rock at intervals reveal the wild beauty of the side canyon.

Up on the plateau, you cross the dramatically colored Prismatic Plains and then enter Kaibab National Forest. This area of more than 1,700 square miles stands at elevations of from 7,500



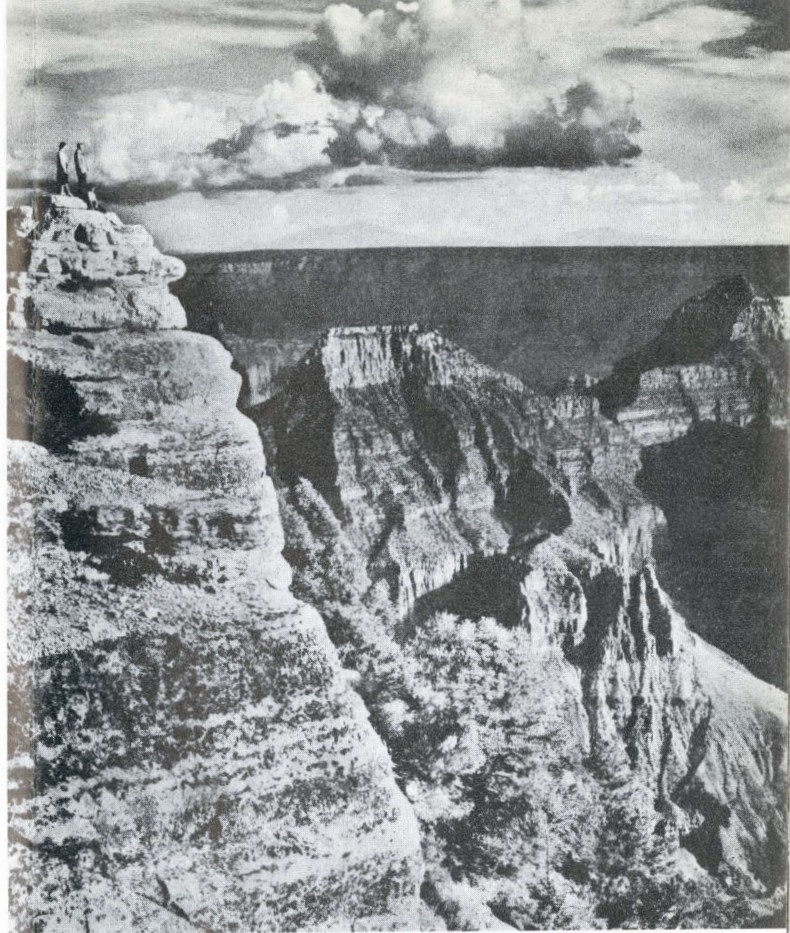
- *A small thunderhead drifts over the Grand Canyon, viewed here from the North Rim.*

origin. While the formations are geologically old, the canyon itself has probably been not much more than a million years in the making.

Rock colors range from dull red and chocolate brown to gray, green, pink and light buff. But it means little to list the colors for they change ceaselessly as the sun arches overhead and the cloud shadows drift along. From morning to evening, each hour presents a new facet of the mysterious and ever-changing chasm.

Grand Canyon Lodge, operated by the Union Pacific, is located at Bright Angel point. Perhaps your first glimpse of the canyon will be from the broad windows of the lobby. Motor roads lead to Point Imperial (highest place on the rim) Cape Final, Cape Royal and Point Sublime. Each one offers superb panoramas and picture-taking possibilities. They'll tell you at the Lodge which location is best for a particular time of day.

Well-trained horses and qualified guides are available either for trips along the rim or, if you have more time and are more adventurous, right down to the bottom of the canyon on Bright Angel Trail. Don't be in too much of a hurry at Grand Canyon. It is so big and its impact is so stunning that you can't take it in at a glance. Give it a little time for a really memorable experience.



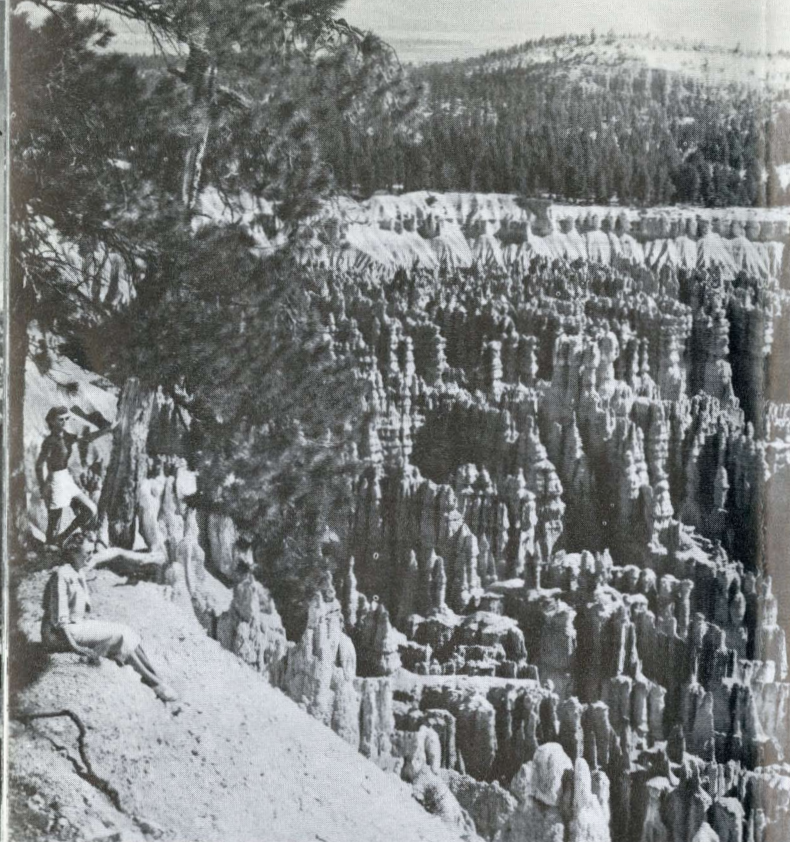
Bryce Canyon National Park

Back northward the route goes through Kaibab Forest and past Kanab to Bryce Canyon for another startling example of why this is the land of contrasts.

After the immensity of the Grand Canyon, Bryce seems comparatively small and friendly, well within the compass of the mind and the

- *Handsome Grand Canyon Lodge, operated by the Union Pacific, stands at the brink of the North Rim.*

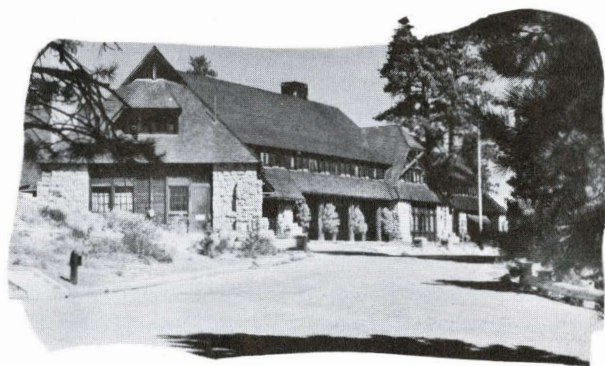




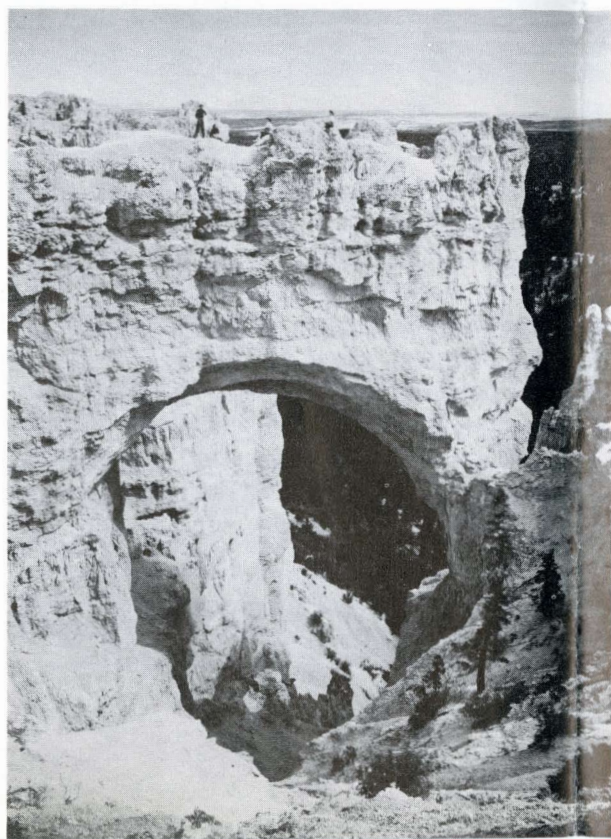
- *Lacy and delicate, the rock formations of Bryce Canyon glow in the afternoon sun.*

emotions. Yet its central horseshoe bowl is a thousand feet deep and about two miles wide by three miles long—ample space for a sizable city.

Just as different is Bryce in its coloring and spirit. The limestone is almost entirely orange, pink and white plus delicate, intermediate tones that the ladies can describe. And the atmosphere is one of fantasy. Here are bewildering thousands of formations—castles and gargoyles, spires and minarets, turrets, battlements and peaks.



Here is attractive Bryce Canyon Lodge.



Again the changing angles and intensity of the light work miracles in color and form. Human heads and crouching, grotesque animals appear that a little later revert to inert masses of stone. Go down from the rim on foot or on horseback. From the floor of the amphitheater, the formations resume their true scale. What looked from above like a delicate and graceful figure becomes a soaring monolith of weathered stone.

Bryce Lodge is on the rim of the canyon and has modern, comfortable guest houses scattered among the surrounding trees.

- *A natural bridge formation in Bryce Canyon shows what water and wind erosion can accomplish.*

Cedar Breaks National Monument

In many respects Cedar Breaks is the greatest of Utah's canyons. It lacks the snug symmetry of Bryce, but its sixty square miles of linked bowls slashed 2,000 feet deep into the plateau offer a tremendous range of colors and forms.

Again the tone is predominantly light with an abundance of pink, terra cotta and orange shades, but there are many deeper colors—chocolate, rose, wine and purple.

There are sheer cliffs and long slopes fretted with a network of drainage channels. Dragons and dinosaurs in vari-colored rock crawl on the canyon floor.

The Union Pacific's Cedar Breaks Lodge, a short distance from the rim, has comfortable accommodations including a dining room, lounging and rest rooms, and a curio and souvenir shop.

Details of one to five-day tours including costs are printed on a separate leaflet enclosed in this book.

Las Vegas...sun and fun

In the triangle of southern Nevada wedged between the Arizona and California lines, lies the resort city of Las Vegas that has more than quadrupled in size during the past ten years and claims over five million annual visitors to the area. The reasons are not hard to find.

Nature endowed Las Vegas with a maximum of sunshine, with handsome desert scenery and nearby mountains. Man took care of the rest.

- *Practically every hotel has a swimming pool in Las Vegas, Nevada where the sun always shines.*



Cedar Breaks National Monument offers this view of the "circle of painted cliffs."



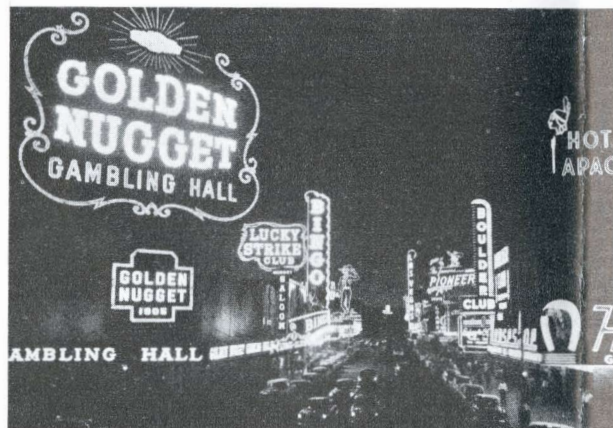


The five mile long "Strip" has been called everything from "Boulevard of Dreams" to "Broadway of the Sagebrush." It has as fabulous an array of hotels and motels as any spot in America. The big hotels feature floor shows with the top stars of Hollywood, Broadway and television—and there is no cover charge. The luxurious gambling casinos never close and offer every kind of game. There are dozens of outdoor swimming

You can see that the ranch country around Las Vegas has a variety of attractions.



A stroll in the sun in Las Vegas.



Fremont Street in downtown Las Vegas lights the desert sky every night with its neon glow.

pools . . . a fine golf course . . . tennis courts and shuffle board . . . dude ranches right on the edge of town.

You're never dressed wrong in Las Vegas. The "come as you are" policy of this hospitable town makes it commonplace to see dinner jackets and Paris gowns mingling with sport clothes and western outfits at the casinos and hotels.

To the west are the AEC's proving grounds at Yucca Flat and Frenchman Flat. If an atomic "shoot" is scheduled, gay parties frequently stay up all night to see the brilliant atomic mushroom flood the dawn sky with eerie light.

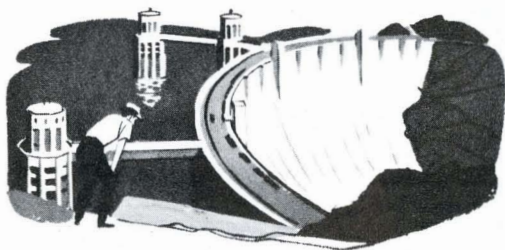
Hoover Dam and Lake Mead

Millions of people can tell you that a giant dam is one of the world's most fascinating sights and most dramatic testimonials to the achievements of man.

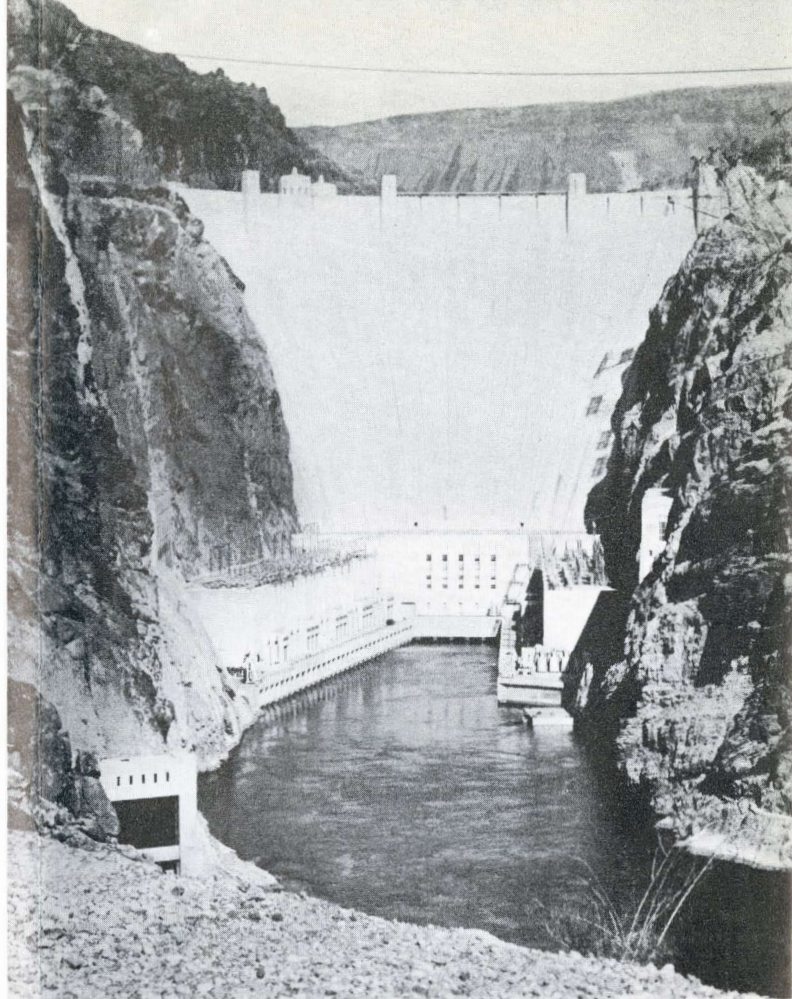
Hoover Dam in the Black Canyon of the Colorado is easily the highest in the world, rising 726 feet above bedrock. Its base is 660 feet thick, the top 45 feet, and the roadway from canyon wall to canyon wall is almost a quarter of a mile long. There is enough concrete in the dam to pave a two-lane highway from New York to San Francisco.

The water impounded by the dam eliminates the danger of flood damage on the lower Colorado, irrigates several hundred thousand acres of fertile land, and supplies domestic water to about 50 incorporated cities as well as to large rural areas. In addition, Hoover Dam generates $1\frac{1}{4}$ million kilowatt-hours of electricity for home and industrial use.

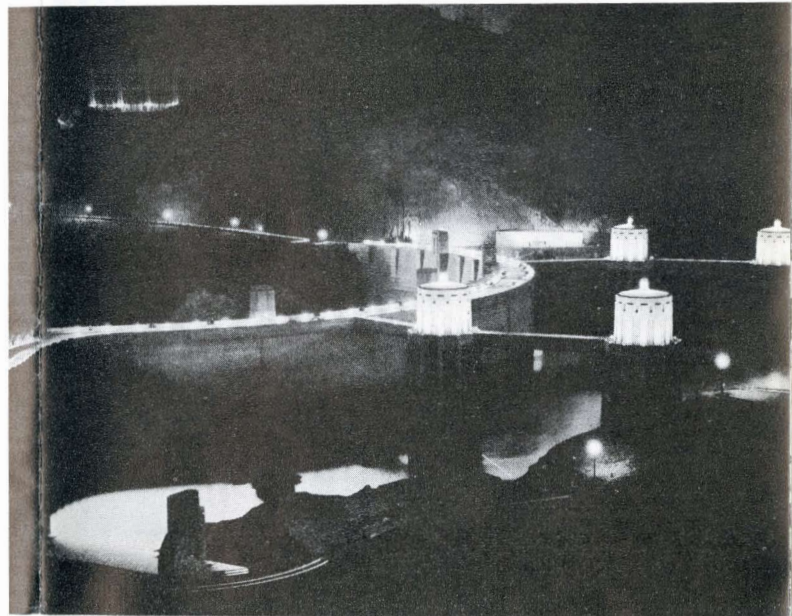
About a million people visit the dam each year, and many of them take the guided tours through the dam and powerhouse. Tours are continuous from 8:00 AM to 5:00 PM, and take 45 minutes each. Prices are 30¢ each for adults, free to children under twelve years of age.

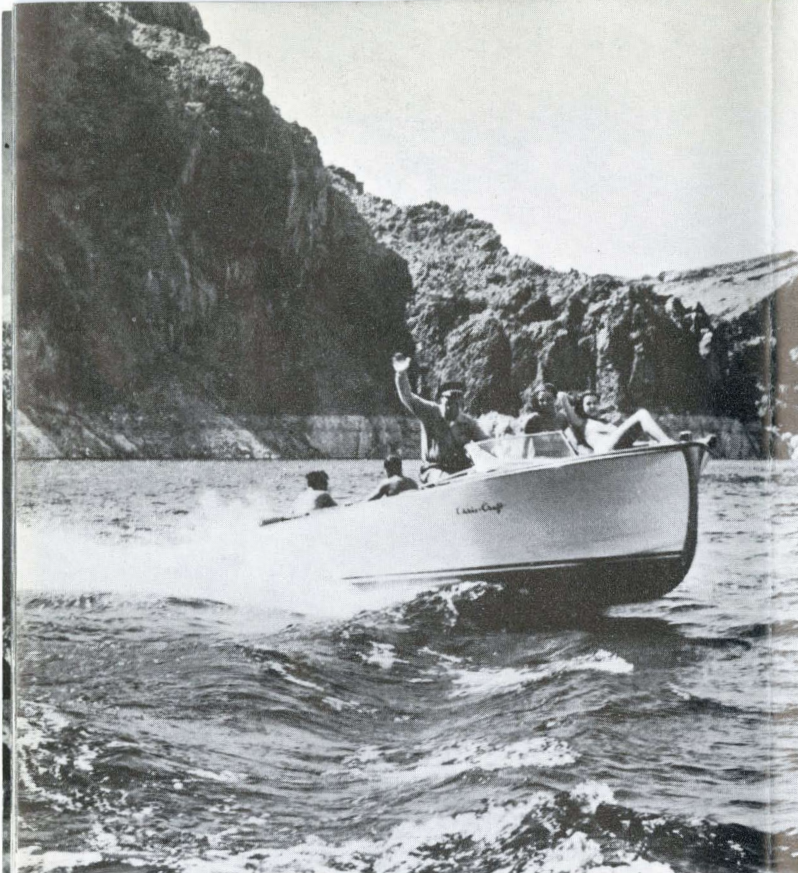


- *This night view is from the upstream side of mighty Hoover Dam.*



Hoover Dam, the highest in the world, checks the turbulent Colorado 30 miles from Las Vegas.





Aquaplaning behind a fast boat is one of many water sports to be enjoyed on Lake Mead.

A national recreation area

Twisting back through the colorful canyons and mesaland of the southwest, Lake Mead attracts more than two million people annually to enjoy its excellent bass fishing and varied water sports.

Lake Mead extends 115 miles above the dam with the largest volume of water of any artificial lake in the world. And included in the area is

- *Boating and fishing are provided on Lake Mead 365 days a year. No closed season on the fish.*

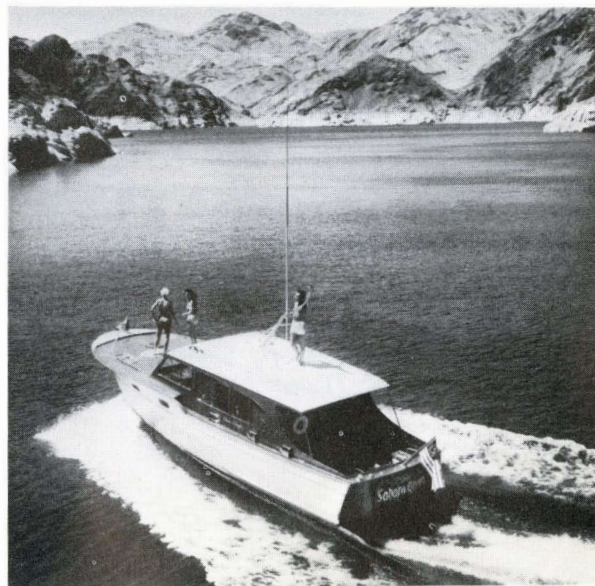


Lake Mojave which extends from the tailrace of the dam 67 miles downstream to Davis Dam.

On these endlessly fascinating waterways that open up hitherto untouched sections of country, you will see cabin cruisers moored in secluded coves. There are sailing regattas and outboard races. Rowboats and outboards for fishermen can be rented on the lakes, while thousands of sportsmen bring their own craft either on the roof of the family car or on a trailer behind it.

Fishing is excellent and there is no closed season. You have a fine chance to take a heavy string of black bass, bluegills, crappies or catfish. If you want to try something more strenuous, the waters are ideal for aquaplaning or water skiing.

Travelers to Las Vegas via The Milwaukee Road and the Union Pacific receive bus transportation between Las Vegas and Hoover Dam-Lake Mead without charge when issued in connection with rail tickets.



Vacations begin on the Domeliners

It's a long way from the East or Middle West to Salt Lake City, the Utah-Arizona parks or Las Vegas-Hoover Dam. A long way, but a short and happy trip filled with pleasant hours of relaxation when you go by rail. Even if you travel alone, you will soon get acquainted with congenial companions from all parts of the country.

Your trains are the famous CITY OF LOS ANGELES and the CHALLENGER operated between Chicago and Omaha by The Milwaukee Road, west of Omaha by the Union Pacific. You are assured of a smooth, quiet ride, of appetizing meals and friendly service.

The Domeliner CITY OF LOS ANGELES is an all-Pullman train with roomettes, bedrooms, compartments and drawing rooms, an Astra Dome observation-lounge car and a bedroom club car. There is also a dome-diner where you can have dinner under the stars, or breakfast and lunch where you can enjoy panoramic views of the scenic West.

The CHALLENGER Domeliner is an all-coach train with the latest in reserved seat coaches with leg rests, an Astra Dome coach, a lounge car and diner. There is ample luggage space and big lounge-dressing rooms in each car.

During the Parks season, service is provided from Salt Lake City and from Los Angeles to Lund, Utah; also through sleeping cars to Cedar City, starting point for circle tours of the Utah-Arizona parks.

- This is the lower level of a dome-diner on one of The Milwaukee Road's Western "CITIES" fleet.



Divan-type, angled seats for two make it easy to enjoy the scenery from the glass-enclosed domes.



Reclining chairs with leg rests and a soft pillow help coach passengers to sleep comfortably.




Sun Valley, Idaho

Even though it lies considerably to the north of the ground we have been covering, a book about the inter-mountain West would scarcely be complete without some mention of this delightful resort built and operated by the Union Pacific.


If you are a skier or winter sports fan, you probably know about Sun Valley. If you are not, you may not realize that this is also a wonderful spot for a summer vacation.

Very complete accommodations are provided at the Challenger Inn and Sun Valley Lodge with a wide range in prices. Horses are available for casual riding or pack trips with guides. You can fish trout-filled streams, ice skate on an outdoor pond, skeet shoot, swim, play golf, bowl or dance—do just about anything you please including taking a trip up the mountain in a chair-type ski lift.

Service to Sun Valley via Shoshone and Ketchum is on the Domeliner CITY OF PORTLAND carrying Pullmans, Astra Dome observation-lounge car, a dome-diner, cafe lounge for coach passengers, reserved-seat, leg rest coaches and an Astra Dome coach.

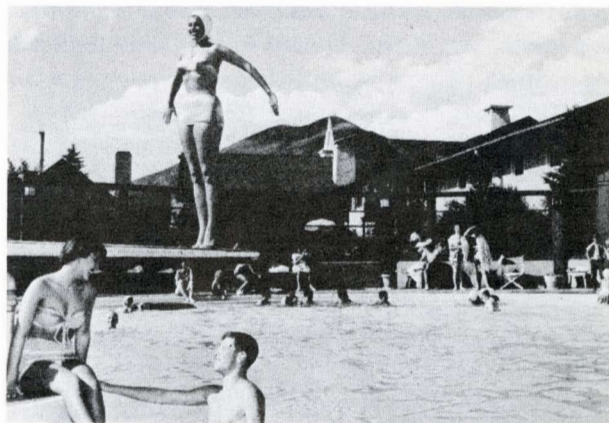


Riders on Penny Mountain trail stop to look back at Sun Valley Lodge and Challenger Inn.



The chair-type ski lift offers a thrilling ride up the mountain.

Artificial freezing keeps the outdoor ice arena in use all summer.



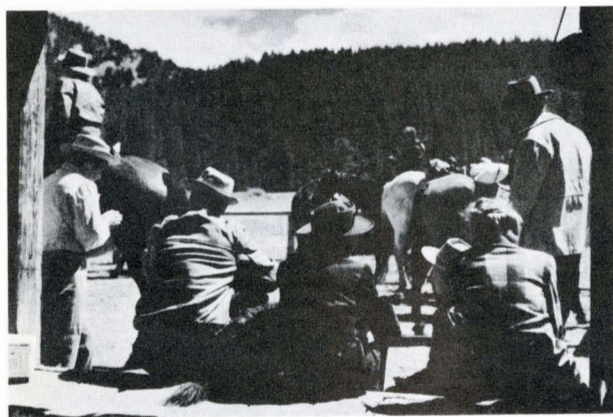
A dip in the pool is pleasant and refreshing.

- *Nearly all western dude ranches feature trips on scenic mountain trails.*

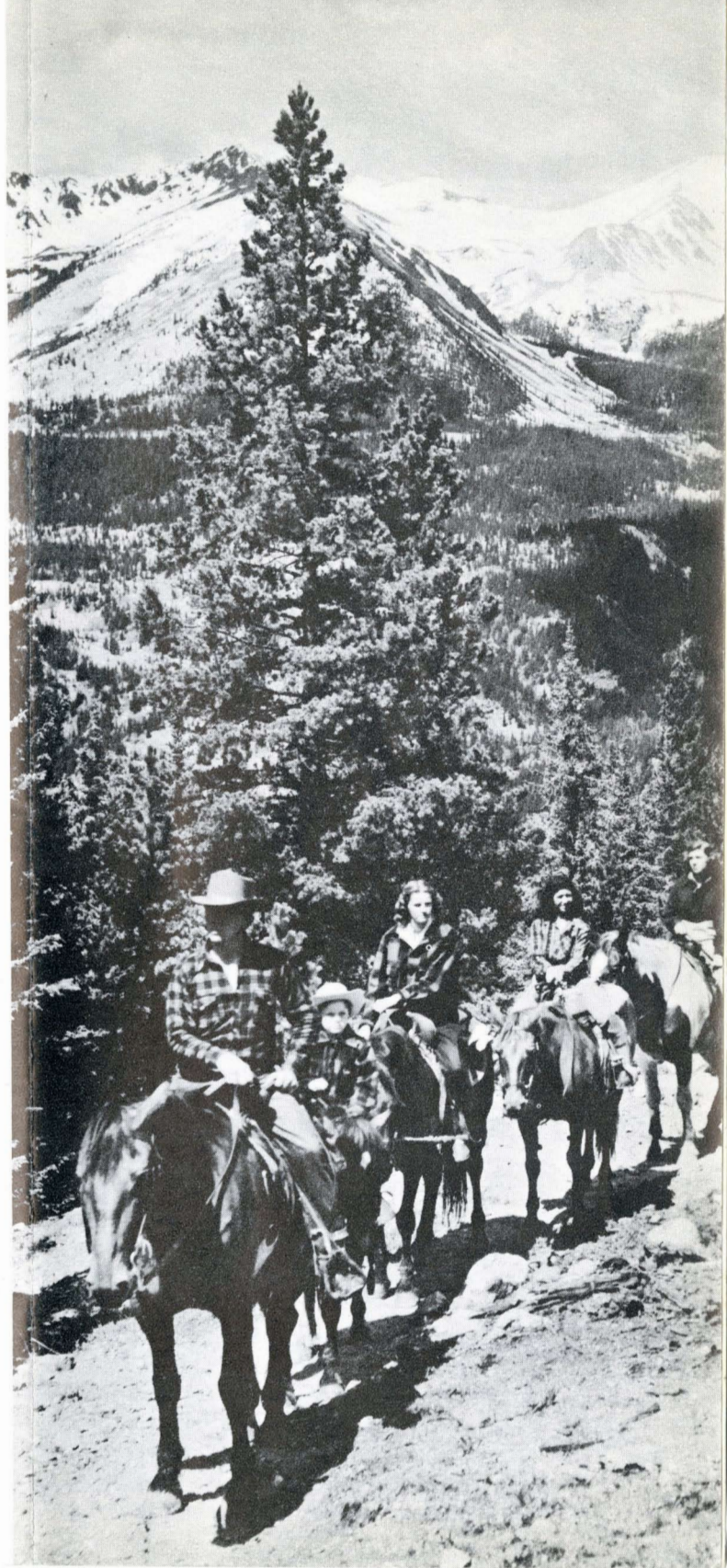
Dude Ranches in the West

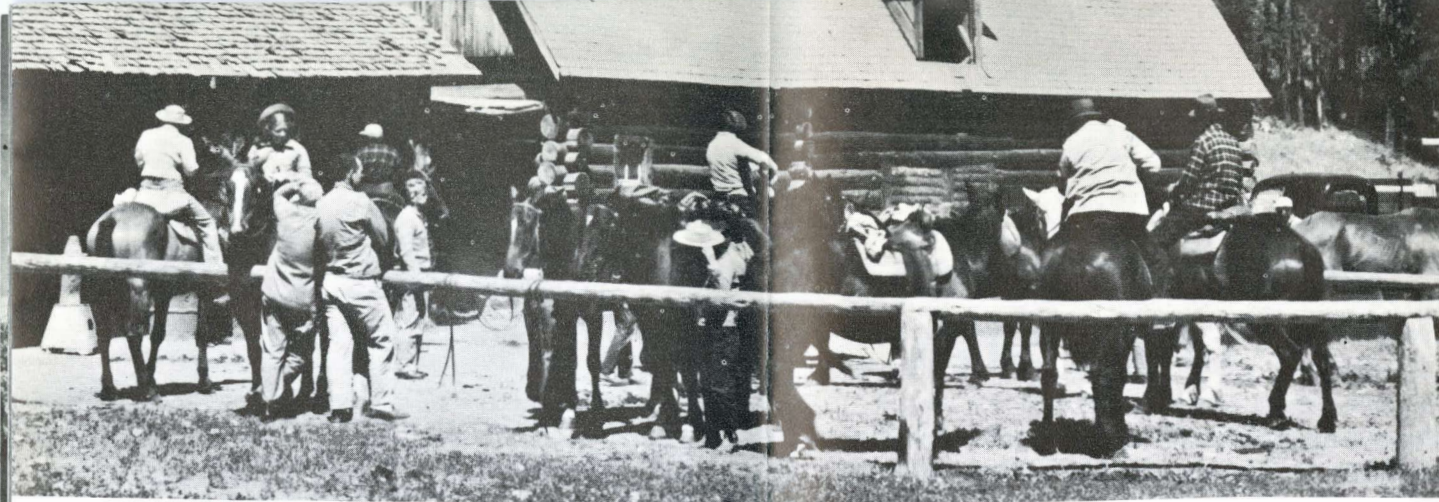
There are a few unfortunate people to whom it is impossible to explain the lure of a dude ranch vacation. But in most of us there is enough of the latent cowboy to imagine ourselves sitting tall in the saddle while our horse threads his way along a mountain trail and emerges on an open bench with the wide, wonderful world spread around us. We see, too, the pioneer West of traders and mountain men, of wagon trains and Indians, of miners and sod-busters.

What keeps most of us back is the familiar cry, "But I don't ride." Forget it. A few days with a wise western wrangler and you'll know all you need to about handling a horse. By the end of your vacation, you'll be a knowing critic of the stunt riders at the rodeo. In many ways, a horse is much less complicated than an automobile. And, besides, the horse often *helps*.



Waiting for the horses before the morning ride.





Saddled up and ready to go—group of riders on a Montana dude ranch.



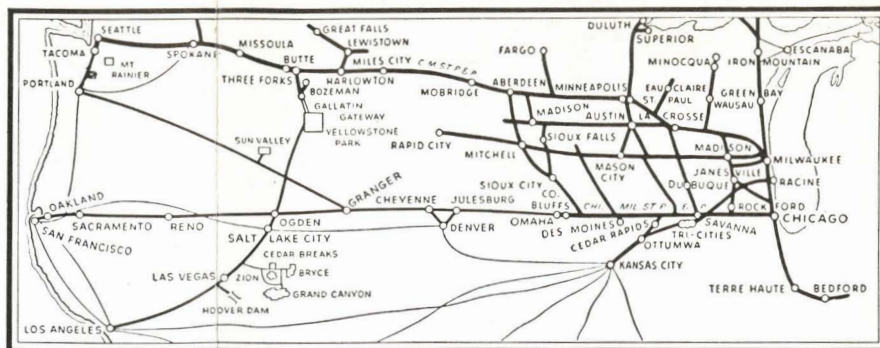
You'll find dude ranches all through the areas that are described in this booklet—in Colorado, Utah, Nevada and also California. Some are working ranches of huge acreage where the guests eat with the cowhands and maybe help out with the roundup. Some are elaborate in their accommodations and are strictly for dudes. (Don't mind "dude"—it's a friendly term in the West.) Most of them offer other attractions in addition to riding and pack trips—usually fishing and swimming, maybe skeet or trap-shooting, tennis or golf. And there's a friendly social life revolving around chuck wagon breakfasts, steak and fish fries by roaring camp fires, square dances at the home ranch or in a nearby town. Incidentally, you may find your first whirl at square dancing more strenuous than a session in the saddle.

Tell us where you'd like to go. We have a listing of a number of ranches, their guest capacity and weekly rates. You can select several that look appealing and seem to offer what you want. Then a letter mailed directly to the proprietors will bring you full information including, in most instances, an illustrated brochure.

● *A wrangler and his pack horses lead the way on this trip into the Rocky Mountains.*



TRAVEL and INFORMATION BUREAUS



ABERDEEN, S. D., "Milwaukee" Station, 1 North Main St. Phone 2219
 A. F. Reuland, Division Passenger Agent
 ATLANTA 3, Ga., 521-522 Healey Bldg. Phone Walnut 6585
 G. J. Sattelle, General Agent
 BELOIT, WIS., "Milwaukee" Station. Phone EMerson 2-2756
 M. M. Marske, Passenger and Ticket Agent
 BOSTON 8, MASS., 294 Washington St. Phone Liberty 2-9812
 W. D. Goss, General Agent
 BUFFALO 3, N. Y., 295 Main St. Phone Washington 0634
 W. A. Stauffer, General Agent
 BUTTE, MONT., "Milwaukee" Station. Phone 3251
 V. E. Strauss, Assistant General Passenger Agent
 CEDAR RAPIDS, IOWA, 501 First Ave., S. E. Phone 3-4744
 O. R. Lambertson, General Agent
 CHICAGO 6, ILL., 240 Union Station Bldg. Phone Central 6-7600
 S. E. Pilson, General Agent Passenger Department
 R. V. Gertz, 163 W. Jackson Blvd., Zone 4. City Ticket Agent
 CINCINNATI 2, OHIO, 324 Dixie Terminal. Phone GARfield 1-5247—1-5248
 R. T. Dempsey, General Agent
 CLEVELAND 14, OHIO, 925 Euclid Ave. Phones MAin 1-2457—1-2458
 R. G. Davison, General Agent
 CLINTON, IOWA, 60 Fourth Ave. Phone 712
 M. O. Schorr, Passenger Agent
 COUNCIL BLUFFS, IOWA, 1300 South 6th St. Phone 2767
 J. I. McGuire, Agent
 DAVENPORT, IOWA, Union Station, Foot Harrison St. Phone 2-5304
 A. T. Paulsen, Passenger and Ticket Agent
 DES MOINES 9, IOWA, Union Station, 5th and Cherry Sts. Phone 3-6277
 C. P. Cassidy, Division Passenger Agent
 DETROIT 26, MICH., 144 W. Lafayette Blvd. Phones WOodward 2-3716-17
 W. G. Lacey, General Agent
 DUBUQUE, IOWA, "Milwaukee" Sta., 3rd St. & Central Ave. Phone 2-1559
 R. J. Kemp, Passenger and Ticket Agent
 DULUTH 2, MINN., 420 W. Superior St. Ph. RA. 2-0524, Sup. EX. 2-2502
 P. P. Gehrig, General Agent
 EUGENE, ORE., Ardel Offices, 33 E. 10th Ave. Phone DIamond 3-6525
 A. G. Brett, District Passenger Agent
 FREEPORT, ILL., "Milwaukee" Sta., 410 E. Stephenson St. Phone MAin 1302
 R. L. Fuller, Ticket Agent
 GREEN BAY, WIS., "Milw." Sta., End S. Washington St. Ph. HE 2-5575
 C. P. Devereaux, Agent
 INDIANAPOLIS 4, IND., 421 Board of Trade Bldg. Phone MElrose 2-1369
 W. G. Orr, General Agent
 JANEVILLE, WIS., "Milw." Sta., 225 N. High St. Phone PLeasant 6946
 J. M. Brown, Passenger and Ticket Agent
 KANSAS CITY 6, MO., 646 Board of Trade Bldg. Phone VICTor 6390
 E. C. Derr, General Southwestern Agent
 LACROSSE, WIS., "Milw." Sta., St. Andrew & Caledonia Sts. Ph. 2-7151
 E. A. Freund, District Passenger Agent
 A. C. Anderson, Ticket Agent
 LOS ANGELES 14, CALIF., 210 W. Seventh St. Phone TRinity 9555
 R. B. Amis, General Agent
 MADISON 3, WIS., "Milwaukee" Station. Phone ALPine 5-4561
 R. K. Hurlbut, District Passenger Agent
 MASON CITY, IOWA, "Milwaukee" Station. Phone 82
 H. W. Frazee, Passenger and Ticket Agent
 MILES CITY, MONT., "Milwaukee" Sta., N. Cottage Grove Ave. Phone 362
 W. C. Boyle, Passenger and Ticket Agent
 MILWAUKEE 2, WIS., 210 E. Wisconsin Ave. Ph. BRoadway 6-1864
 C. F. Dahnke, Assistant General Passenger Agent
 O. R. Bartel, Station Ticket Agent, 4th Ward Pk. Ph. BR 1-6120
 MINNEAPOLIS 1, MINN., "Milwaukee" Station. Ph. FEderal 9-1616
 H. M. Larson, Assistant General Passenger Agent
 D. G. McMillan, 707 Marquette Ave., G.A.P.D. Ph. FEderal 9-1616
 R. S. Luce, Station Ticket Agent, 3rd Ave. So. Ph. FEderal 9-1616

WM. WALLACE, Assistant Passenger Traffic Manager, Chicago 6, Ill.

H. SENGSTACKEN, Passenger Traffic Manager, Chicago 6, Ill.

MISSOULA, MONT., "Milwaukee" Station. Phones 3-3186 & 6-6639
 G. B. Baker, Passenger and Ticket Agent
 NEW ORLEANS 12, LA., 210 Baronne St. Phone TUlane 5678
 C. T. Carter, General Agent
 NEW YORK 17, N. Y., 122 East 42nd St. Phone OXford 7-2220
 C. C. Burns, General Agent Passenger Department
 OAKLAND, CALIF., 436 14th St. Ph. TEmpLe Bar 6-0897 & 98
 A. S. Price, District Passenger Agent
 OMAHA 2, NEBR., 222 So. 15th Street. Phone JAckson 4481
 G. A. Henkens, General Agent Passenger Department
 OTTUMWA, IOWA, "Milwaukee" Station, Jefferson St. Phone MU 2-4561
 I. R. Carlson, Passenger and Ticket Agent
 PHILADELPHIA 9, PA., 123 Broad St. Phones PENnypacker 5-0407 and 08
 P. A. Larson, General Agent
 PITTSBURGH 22, PA., 518-519 Oliver Bldg. Phones ATLantic 1-2438-39
 Geo. Neu, General Agent
 PORTLAND 4, ORE., 528 S. W. Yamhill St. Phone CApitol 8-0204
 R. J. Daniel, General Agent
 RACINE, WIS., Union Station, 607 Park Ave. Phone MElrose 4-7333
 W. E. Ernst, City Passenger and Ticket Agent
 ROCKFORD, ILL., 625 South Main Street. Phone 4-3381
 L. E. Martin, General Agent
 SACRAMENTO, CALIF., 1107 9th St. Ph. GLibert 3-4681-82
 P. L. Cowling, District Passenger Agent
 ST. LOUIS 1, MO., 611 Olive Street. Phone CHEstnut 1-0337
 H. E. Ridenour, General Agent
 ST. PAUL 1, MINN., Minnesota Bldg. Phone CA 2-4491
 J. E. Griller, General Agent Passenger Department
 SALT LAKE CITY 1, UTAH, 405 S. Main Street. Phone EMpire 3-4184
 J. G. MacDonald, General Agent
 SAN FRANCISCO 5, CALIF., 681 Market Street. Phone DOuglas 2-4912
 R. G. Graham, District Passenger Agent
 SEATTLE 1, WASH., 306 Union St. Phone ELiot 6800
 R. E. Schaffert, General Agent Passenger Department
 SIOUX CITY 1, IOWA, "Milwaukee" Sta., 2nd & Pierce Sts. Phone 8-0511
 T. L. Ericson, Station Ticket Agent
 SIOUX FALLS, S. D., "Milwaukee" Sta., 5th St. & Phillips Ave. Ph. 4-5547
 J. D. Wohlenberg, General Agent
 SPOKANE 1, WASH., North One Post Street. Phone MAin 2261
 J. G. Cain, District Passenger Agent
 TACOMA 2, WASH., 112 South Ninth Street. Phone MAket 2101
 J. M. Stanger, District Passenger Agent
 O. R. Powels, Sta. Agt. "Milw." Sta., E. 11th & Milwaukee Way
 TERRE HAUTE, IND., 300 Rea Bldg. Phone CRawford 2852
 Peter Braun, Division Passenger Agent
 TORONTO 1, ONT., 503 Canadian Pacific Bldg. Phone EMpire 8-8381
 R. G. Luscombe, General Agent
 TULSA 3, OKLA., 321 S. Boston St. Phone CHerry 2-9921
 H. A. Washburn, Commercial Agent
 VANCOUVER 2, B. C., 793 Granville Street. Phone MArine 8177
 E. C. Chapman, General Agent
 VICTORIA, B. C., 920 Douglas St. Phone 2-7254
 C. E. Blaney, Jr., Agent
 WASHINGTON 5, D. C., 310 Sheraton Bldg. Phones REpublic 7-1038-39
 J. B. Cunningham, District Passenger Agent
 WAUSAU, WIS., "Milwaukee" Station, 739 Grant St. Phone 5166
 A. W. Schulz, Passenger and Ticket Agent
 WINNIPEG 2, MAN., 211 Portage Avenue. Phone 925-753
 J. H. Bradley, General Agent
 WINONA, MINN., "Milwaukee" Station, Mark and Center Sts. Phone 4062
 L. M. Petrie, Passenger and Ticket Agent
 WINSTON-SALEM 3, N. C., 403 N. Main Street. Phone 2-6502
 R. E. Anderson, Traveling Passenger Agent

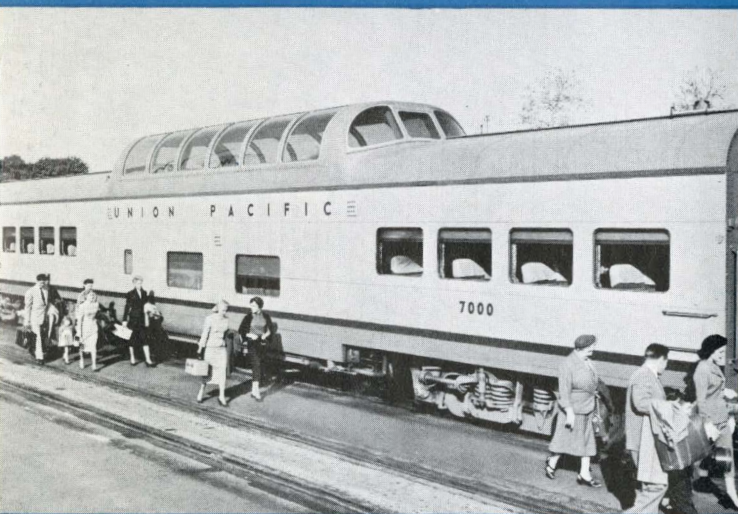
O. R. ANDERSON, General Passenger Agent, Seattle 1, Wash.

THE MILWAUKEE ROAD

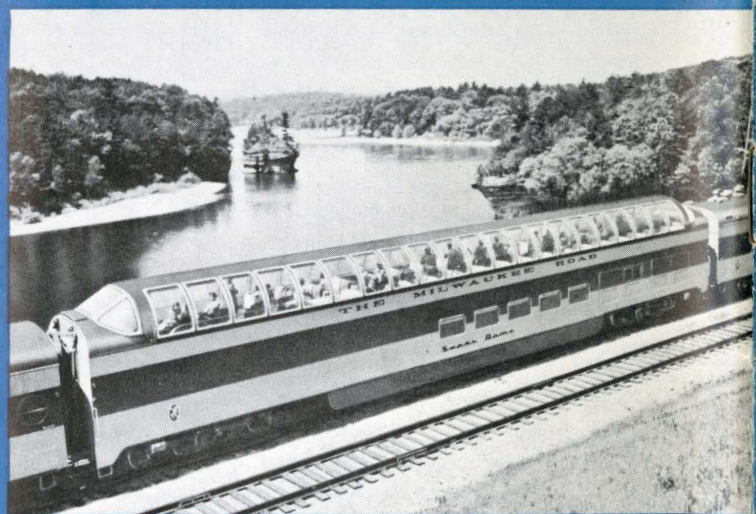
Route of the Super Dome HIAWATHAS and Western "CITIES" Streamliners



Modern equipment and friendly service add to the joy of a western vacation on The Milwaukee Road. You see more from a dome car such as the one pictured at the left. The diners are famous for appetizing meals.



A Milwaukee Road Western "CITIES" Domeliner.



A Super Dome HIAWATHA passes the Wisconsin Dells.

THE MILWAUKEE ROAD

COLORADO
UTAH