

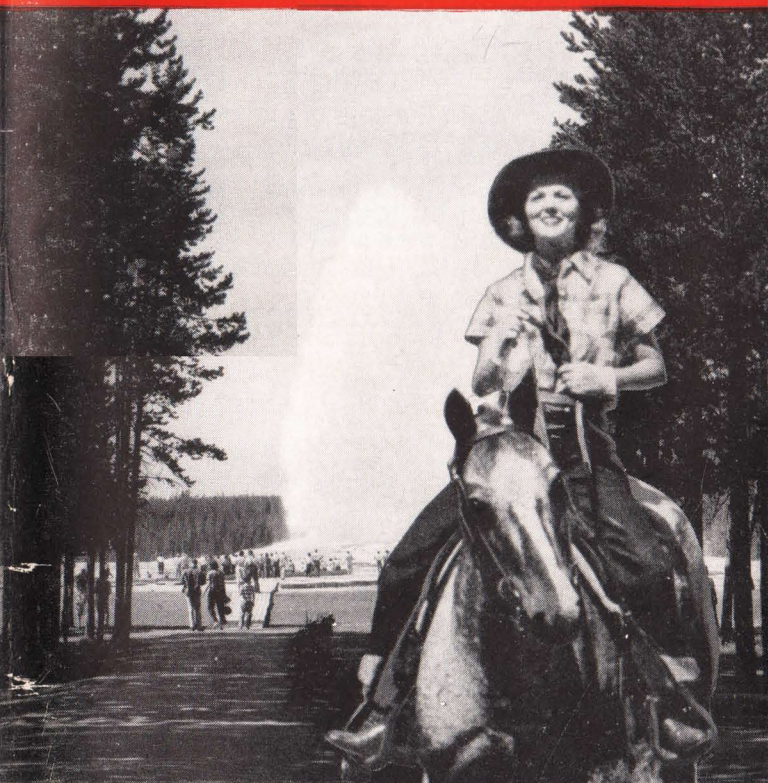
# Yellowstone

via  
Gallatin Gateway  
MONTANA



# Yellowstone

via  
Gallatin Gateway  
MONTANA



## The Milwaukee Road



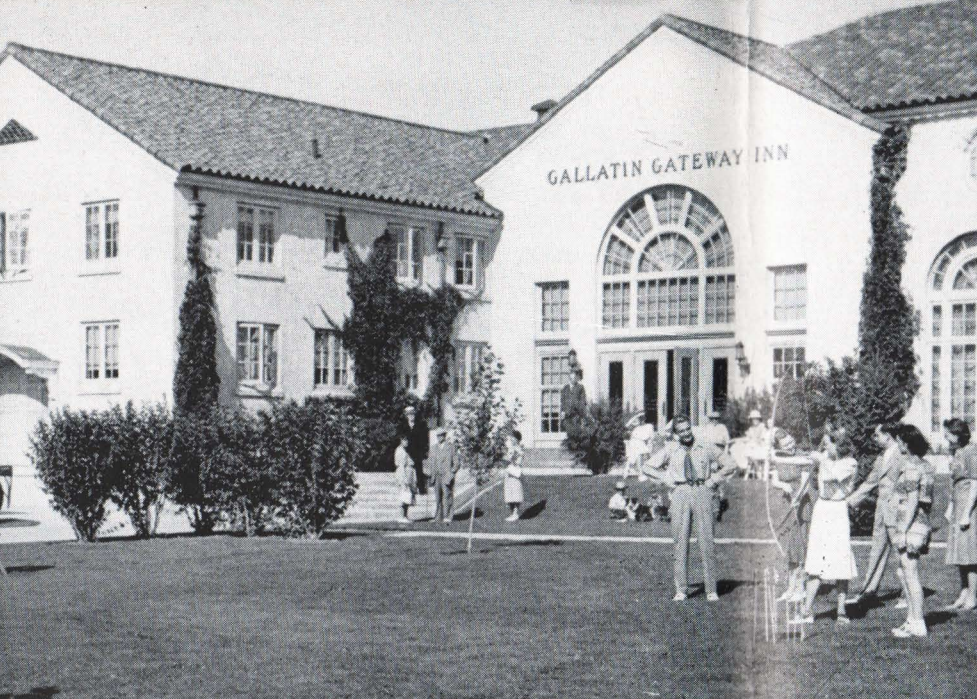
The friendly Railroad of  
the friendly West

## The Milwaukee Road



The friendly Railroad of  
the friendly West





*Set in green lawns, the attractive and informal Gallatin Gateway Inn is staffed by people imbued with the open-hearted spirit of the West. You'll feel at home here right from the moment you step off the comfortable motor coach.*

## Start your glorious western vacation at GALLATIN GATEWAY INN

Composed in equal parts of natural beauty, mystery and fascination, Yellowstone Park has long taken rank as one of America's and the world's show places. Recently it has entertained as many as a million visitors in a single summer.

Now *you* are planning a Yellowstone vacation. We propose, in this booklet, to give you a foretaste of the wonders that lie ahead. To show you some of the advantages of entering the Park via the scenic Gallatin Gateway, and to suggest the entertainment possibilities of a few extra days spent at Gallatin Gateway Inn.

Gallatin Gateway Inn lies about thirty-five miles south of Three Forks, Montana, on the mainline of The Milwaukee Road. The Inn was built by the Railroad and is operated for the convenience of Yellowstone passengers as well as for the entertainment of guests who wish to stay over for a short time.

Of modified Spanish design, the hospitable Inn is surrounded by the green, irrigated mead-

ows of the lovely Gallatin valley. In the background rise the timber-clad mountains of the Bridger, Gallatin and Madison ranges of the Montana Rockies.

At its elevation of almost 5,000 feet, the climate is ideal throughout the summer months. There is a high percentage of bright, sunny days yet it is always cool enough at night to enjoy the comfort of woolen blankets.

Passengers for Yellowstone on The Milwaukee Road's COLUMBIAN taking regular Park tours have only an hour or two at the Inn. However, passengers on the new Olympian HIAWATHA arrive at the Inn in mid-afternoon and do not ordinarily leave for the Park till next day after lunch. With a knowledge of the Inn and its facilities, you can plan to take fullest advantage of your time there. And, of course, you may decide to extend your stay.

Set in wide lawns and gardens, Gallatin Gateway Inn is a delightfully comfortable place. It



*Outdoor activities and mountain air are a combination that make Gallatin Inn's famous food taste even better. The bedrooms, far right, are airy and comfortable.*



has bright, airy bedrooms, a spacious two-story living room, a sun-lit dining room and the friendly Corral cocktail lounge. The food is procured from the Inn's own gardens, from nearby farms and ranches, and from markets along the route of The Milwaukee Road. Prepared by skilled chefs and expertly served, it is guaranteed to be just right for the hearty appetites generated by mountain air.

Your genial host at Gallatin Gateway Inn combines a full understanding of hotel operation with an intimate knowledge of the surrounding

country. His staff takes pride in seeing that you enjoy every minute of your stay.

On your way to or from Yellowstone, a few days at the Inn will prove a pleasant interlude. You can spend those days in quiet loafing, in active sports, or in making exploratory trips.

Some of the things to do and places to go are briefly outlined in these pages. Transportation can be obtained for side trips, also horses and guides, fishing tackle and licenses, etc. Whatever you do you'll like the comfort and the congenial atmosphere of Gallatin Gateway Inn.

*The spacious, two-story lounge has an open fireplace, piano, and plenty of easy chairs. Writing desks, too, to catch up on postcards and letters.*





## See Vigilante Relics at Virginia City

Just a pleasant motor trip from the Inn is Virginia City, one of the oldest towns in Montana. Your road leads from the Gallatin Valley across the Madison range, and then up the Madison Valley and over the Vigilante Trail to the town which lies in a bowl among the hills. A gold rush in Civil War times brought in numbers of notorious "road agents" who terrorized the district until the citizens organized a Vigilante committee to deal with the outlaws. On Jan. 14, 1864, five notorious bandits were hanged at the Vigilante Headquarters, and their bodies later interred on Boot Hill overlooking the town. Identification markers on the graves will make a good snapshot for your album.

Today, Virginia City is more or less a "ghost town" with many of the original buildings still in existence, and with a museum filled with interesting relics of early days.

## Try Gold Panning in Alder Gulch

'Way back in 1863, a group of six men headed by Bill Fairweather discovered gold in a little creek just outside of Virginia City. The gulch was named Alder, the mining district Fairweather, and it proved to be one of the richest placer mines of all time with \$100,000,000 in gold produced.

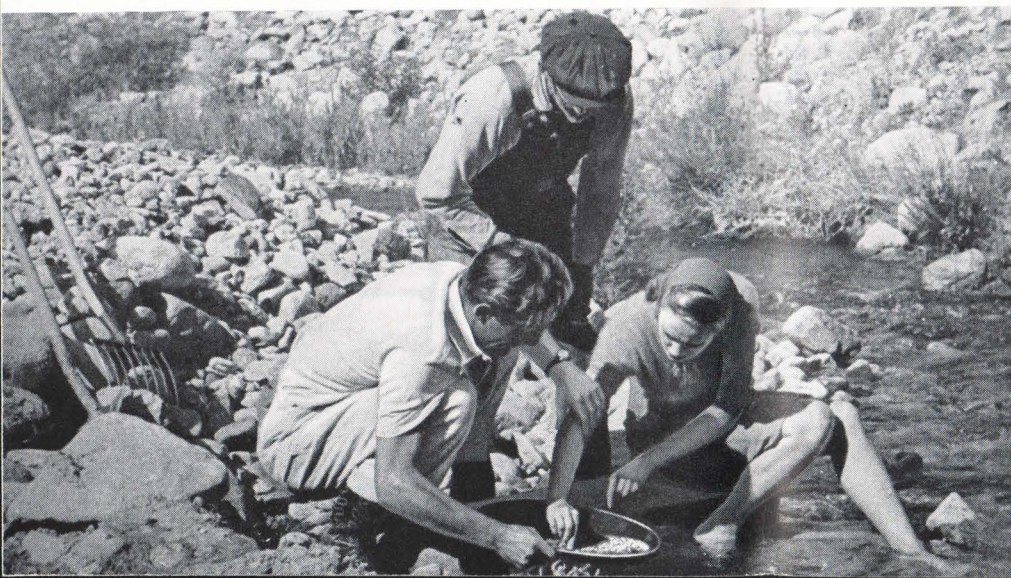
*From the cross-arm projecting from the roof of Hangman's Building at Virginia City, many a bad man danced on the wind.*



In modern times, most of Alder Gulch was re-mined with the mechanical aid of the largest land dredge ever used for such work. This huge structure that lumbered along under its own power performed the complete processing operation right from soil to pure gold dust. The remains of the long-abandoned machine still stand beside the Gulch, a bleak specter of the great past.

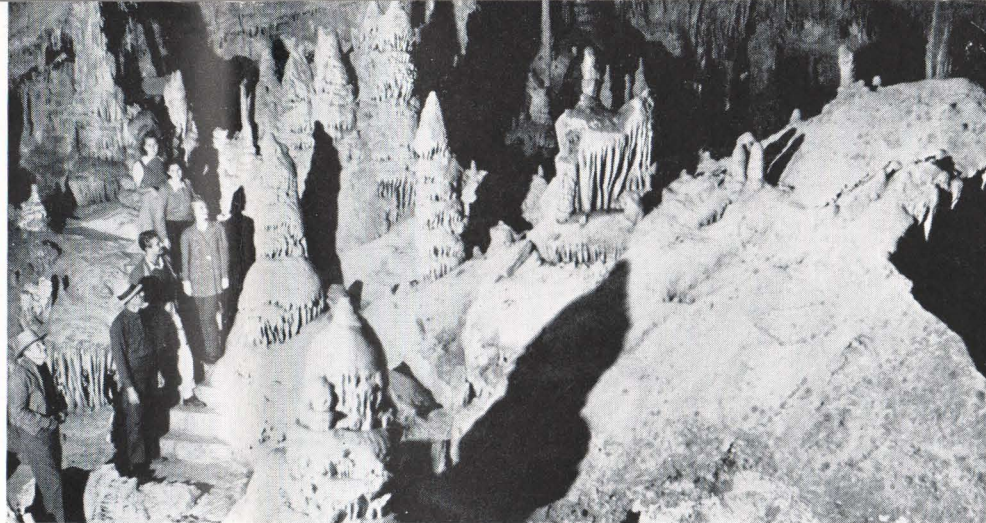
Mining still goes on in a small way. You'll have a chance to dip your own pan into the stream, pick up some of the sand and rock it until the flakes of yellow gold appear. Probably you'll find some Montana garnets, too, ranging in color from deep red to pale sapphire. In any case, you'll have fun and you'll experience in a small way the "gold fever" that has driven men to the ends of the earth.

*Small flakes of yellow metal can still be panned from the sands of Alder Gulch, but you won't run much risk of getting gold fever—or of getting rich.*





*The Cathedral Room is the biggest chamber in the cave and presents a wonderful array of stalagmites and stalactites that were thousands of years a-growing. The ghostly underground world is full of soft colors and fantastic shapes.*



## Explore Lewis and Clark Cavern

A little over half an hour's drive from Three Forks is the objective of another extremely interesting trip—Lewis and Clark Cavern State Park. The last part of the drive is a rapid climb up to an automobile parking area where there are rest rooms and a refreshment stand. A short walk up a wide trail or a ride on the "Jeep Railway" brings the visitor to the mouth of the Cave which is located at an altitude of 5,400 feet in the Tobacco Root range of the Rockies. Below lies a glorious panorama of the

*The "jeep railroad" is a recent addition that saves you the climb from the parking area to the mouth of Lewis and Clark Cavern. The exit is at a lower level.*



Jefferson River valley, of the Gallatin, Madison and Tobacco Root mountains.

Lewis and Clark Cavern was discovered by Dan Morrison in 1902. He partially explored and improved the Cave. More recently, the work was taken over by the Government National Park Service, and the facilities have been greatly improved.

The Cave consists of seven major chambers connected by passages of varying lengths, and descends through the mountainside a distance of about three-quarters of a mile. The Cave remains at a constant temperature of about 52 degrees throughout the entire year, and its formations are still "growing" through the action of lime-bearing water seeping down through the rock. It is not at all unlikely that new chambers will be discovered and opened to the public in future years.

Lewis and Clark Cavern is noted for the delicacy and colorfulness of its rock formations. It is completely electric lighted and every turn reveals fantastically formed stalactites and stalagmites, weirdly convoluted passages, great chambers with high, vaulted ceilings, ghost-like "forests" of lacy rock formation.

After you have had your fill of subterranean exploration, you leave the bottom chamber by a tunnel that emerges at a point below the entrance, and walk back over a level trail.





*Here is a typical group of dude ranchers taking to the trail for a mountain ride.*

## Places to go . . . things to do around Gallatin Gateway Inn

There is something about the atmosphere of Montana that creates a desire to get into the saddle. By making arrangements a little in advance, it is possible to take a pack trip into some nearby mountain area.

One favorite objective for campers is the Gallatin National Forest. With a guide and pack horses, you can ride up to Moon or Deer Lakes high in the Spanish Peaks at an elevation of ten thousand feet. The two day trip takes you into glorious country and provides an opportunity to fish for the rare golden trout. Such a trip, with its vistas of untouched beauty, is an experience you'll treasure through the years.

Would you like to see a real working ranch in operation? From the Inn you can travel to a western cattle kingdom that spreads over

half a million acres and markets many thousand prime steers each year. You can take a look at life on the "home ranch" and in outlying camps, in the corrals and cattle pens, and out on the ranges. If you're lucky, you may see part of a round-up, or some dogies going through the squeeze-box for branding.

Perhaps you have been cherishing the notion that some day you would try a dude ranch vacation. In that case, Gallatin Gateway Inn is the perfect spot to acquire some firsthand information. Within easy driving distance there are a dozen or more dude ranches of all types.

Whether or not you take any trips, you'll surely want to try the fishing. The swift-flowing Gallatin is only a short walk from the door, and there are over 200 miles of good fishing



*Fording Montana streams like this one is easy enough for the horses, but not so easy for the riders. There is always someone who wants to stop and catch a few of the plentiful trout.*







*Sitting in the sun, swapping lies and listening to the legends of the West is part of the fun on a dude ranch vacation. These quiet interludes also offer an opportunity to practice "rolling your own" or a new rope trick.*



waters nearby. Dry flies, wet flies and "garden hackle" are all killers in these waters. Skill counts, of course, but even a novice has a good chance of fishing a three pound beauty from the cold, fast-flowing water. There are big Rainbows, Cutthroats and native Brook to thrill you in the stream and delight you at the dinner table. Tackle and licenses are available at the Inn.

Just a few last, brief tips. Clothing requirements at Gallatin Inn are informal. Sport clothes, riding breeches or slacks are in order; better have a sweater or windbreaker, too. Blue denim "Levis", cowboy boots and other popu-

lar ranch clothes are available locally. Your traveling clothes will do for dress-up occasions such as a party at the Inn or a square dance at some nearby ranch.

Bring your camera, movie or still. There is a wealth of fresh material in and around Gallatin, on the ranches and in the mountains. Films and developing service are available locally.

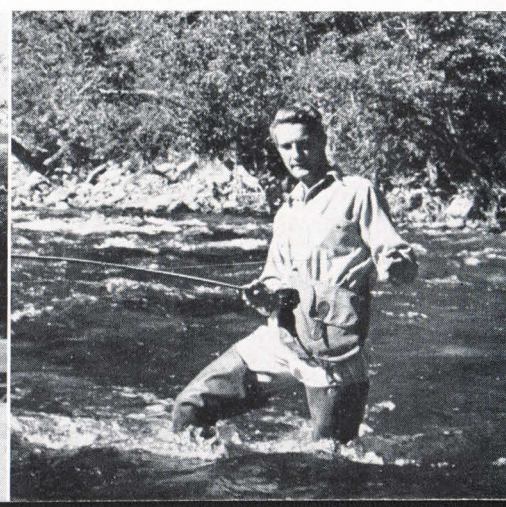
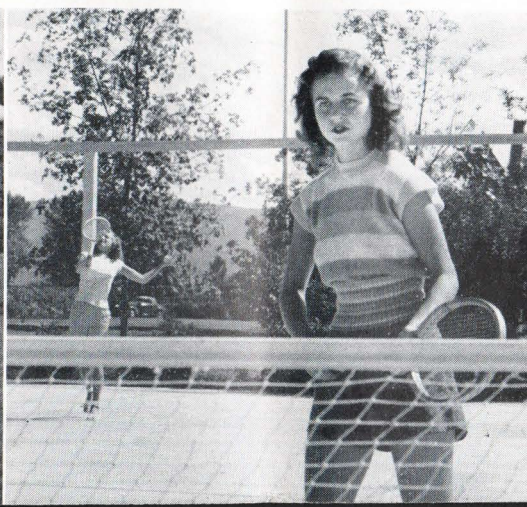
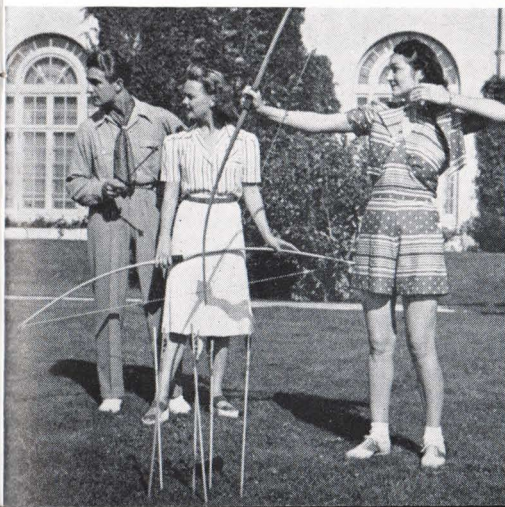
The altitude at the Inn is just over 4,900 feet. Most hayfever sufferers find quick relief in the pure air of this mountain valley where the pollen count is consistently low.

7

*Archery is popular at Gallatin Inn; also clock golf and horseshoes.*

*Plenty of racquets are available if you'd like to try a game of tennis.*

*It's just a short walk to the Gallatin river, a first class trout stream.*







*The Gallatin valley is a long succession of lovely prospects. Here the camera catches an S-curve in the river at Sagebrush Point. The full 80 miles from Gallatin Gateway to Yellowstone are a scenic delight that you'll long remember.*



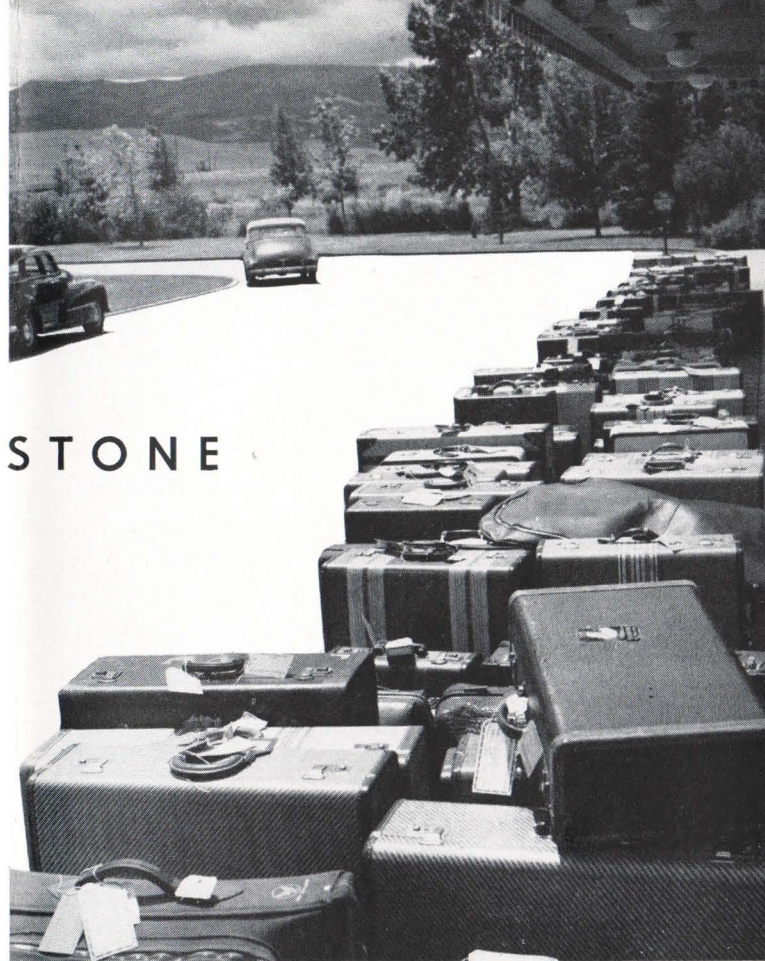
## OFF TO YELLOWSTONE

Chance turned the footsteps of the first white man toward Yellowstone. In 1807, John Colter, a member of the Lewis and Clark Expedition, was wounded in an Indian battle near Jackson Hole. In escaping, he journeyed northward and penetrated Yellowstone as far as what is now known as Tower Falls.

More than twenty years later, Jim Bridger, a famous frontier guide, also entered the region that had come to be known as "Colter's Hell" and verified the fantastic tales of his predecessor. But even then, no one accepted the story. Colter and Bridger were in the position of Marco Polo who had discovered an empire so strange that its very existence was doubted.

Not until 1870, when a public exploring party made a thorough study of the region, were its wonders accepted as fact. Then, action quickly followed. In 1872 a bill was introduced before congress and speedily passed, that established Yellowstone as the first of our National Parks. A vast rectangle of 3,438 square miles lying in the northwest corner of Wyoming and overlapping into Montana and Idaho, Yellowstone is a broad, volcanic plateau with an average elevation of 8,000 feet, and with mountain peaks in and around the park rising as high as ten and twelve thousand feet . . . more than two million enchanted acres with the greatest and most varied array of wonders in all the earth.

But all this is recent history. Take a brief look at the amazing past of Yellowstone. More than a million years ago, the present plateau was a parched, arid plain sheltered behind the



buttresses of the continent's two great mountain ranges—Appalachia in the East and Cascadia in the West. Slowly, the land sank and Yellowstone was buried a hundred fathoms deep under the arctic waters of the Sundance Sea. As the invading waters retreated, a shift in temperature changed Yellowstone into a huge subtropical marsh where giant dinosaurs drowsed and fed in the green half-light that filtered down through jungle trees.

The next great geologic change saw Yellowstone thrust skyward by the slow buckling of earth's crust . . . scorched and shaken by a million years of volcanic activity . . . covered by a vast sea of molten rhyolite. The hot lava slowly cooled and was in turn engulfed by creeping rivers of blue-green glacial ice.

As this new ice age withdrew, countless sedi-





*The Cathedrals are natural Gothic spires of hard stone that resisted erosion by the river when it carved the deep gorge of Galatin Canyon. These formations are especially beautiful under a Montana moon.*

ment-bearing streams roared down from the melting glaciers and, aided by the bitter winds of high places, began carving Yellowstone into its present form.

Even today, Yellowstone is a "young" land that is undergoing relatively rapid changes. The subterranean heat that causes its geyser activity is slowly subsiding.

Old geysers die out and new ones grow in power and regularity. Imperceptibly, the canyons deepen, and erosion carves new patterns on rocky walls.

This is the land . . . rich in forests and wild life, and gemmed with sparkling mountain lakes . . . that has been set aside for the perpetual enjoyment of our people. This is Yellowstone, oldest and greatest of America's National Parks.

Your trip to Yellowstone via The Milwaukee Road takes you through the most spectacular of all entrances—Gallatin Gateway.

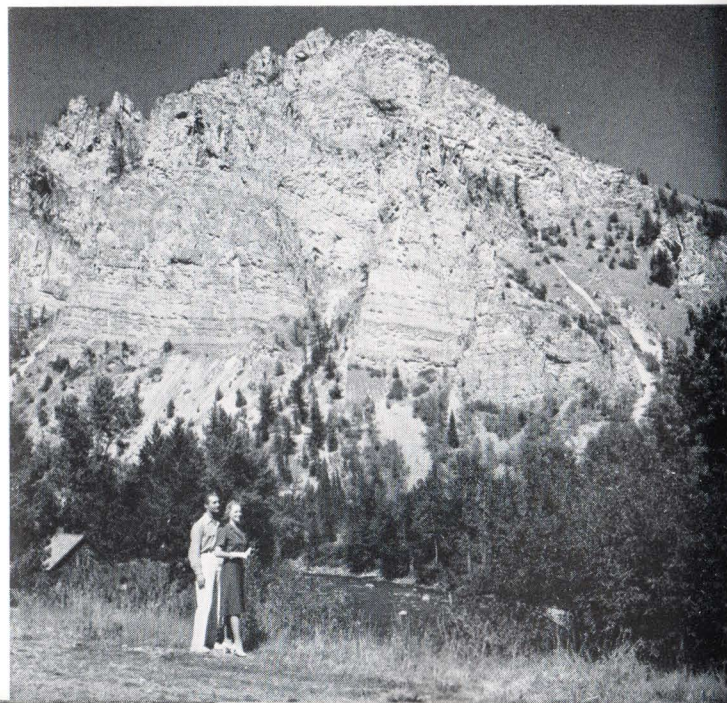
You leave the train at Three Forks, Montana, on the main transcontinental line of The Milwaukee Road. Just outside of town the Gallatin, Madison and Jefferson rivers flow together to form the headwaters of the mighty Missouri.

Lewis and Clark's expedition camped here in 1805 on their way to the Pacific Northwest.

*Pale shades of gray, buff, yellow and orange-red give rich color to the face of Sheep Mountain in Gallatin Canyon. Dark conifers cling to the lower slopes.*

There is a bronze tablet in the town park dedicated to Sacajawea, the Indian girl who guided the explorers. Three Forks was established as a trading post for the Missouri Fur Company in 1810.

Leaving the train, you board a motor coach for a delightful drive of a little over an hour to Gallatin Gateway Inn.





*Accurately carved by a strange quirk of nature, Pulpit Rock towers high above the Gallatin Valley. Formations of this kind are not too unusual, and result when a core of hard rock is surrounded by softer material.*



*Yellowstone-bound, a Park motor coach starts up the Gallatin Valley with Castle Rock in the background. The comfortable buses have roll-back tops that permit full views of the surrounding rocky walls.*



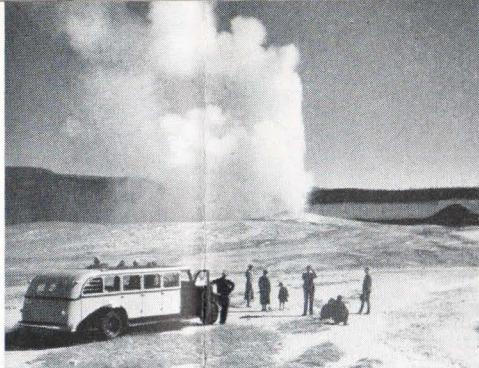




*Riverside Geyser is an irregular performer that sends its plume-like jet diagonally out over the Firehole River. Higher up, the Firehole is a good fishing stream, but here its waters are strongly charged with minerals from the geysers and hot springs.*



*A bus load of visitors has stopped for a look at Old Faithful shooting its mighty column skyward. The Ranger at the far right indicates one of the hundreds of tinted pools that dot the geyser basins.*



## First Stop . . . Geyserland

One of the chief attractions of entering Yellowstone via Gallatin Gateway is the 80 mile motor trip through glorious mountain country that you enjoy without extra charge.

Promptly after lunch, you leave Gallatin Gateway Inn in one of the luxurious motor coaches of the Yellowstone Park Company and begin the trip southward.

In a short time you enter spectacular Gallatin Canyon. Just beyond Roaring Creek lie the huge, eroded battlements of Castle and Cathedral Rocks, majestic cliffs that dwarf the tiny river flowing swiftly at their base. This is the famed Montana dude ranch country, and you glimpse many of the ranches in the innumerable little valleys that are tributary to the Gallatin.

You'll see Sagebrush Point where the Gallatin flows in a graceful S-curve hundreds of feet below the road . . . the broad cone of Lone Mountain rising to a height of ten thousand feet and Pulpit Rock, oddly and accurately carved by some freak of Nature.

Perhaps you'll catch sight of a moose feeding on lily roots in a pond beside the road, or a band of elk emerging warily from the timber. Over there is a new beaver dam, and that gray shadow skirting the road is a coyote.

Crossing dozens of creeks with picturesque, western names, you enter the boundaries of Yellowstone. Again leaving the Park, the road winds through the Madison National Forest, skirts Hebgen Lake, crosses the Madison and

*Old Faithful Inn is said to be one of the highest and largest log buildings in the world. Its pleasantly rustic public rooms have long made it a favorite with Park visitors. Facilities are exceptionally complete.*







*Its curiously formed cone has earned it the name of Grotto Geyser. In its two major basins, Yellowstone has more active geysers than all the rest of the world, but you'll never tire of their varied fascination.*

brings you to West Yellowstone—your official entrance to the Park.

The Motor trip from Gallatin Gateway is a perfect introduction to Yellowstone, and shows you country unlike any within the Park.

## Here Comes Old Faithful

From West Yellowstone, the route follows the Madison through Christmas Tree Park, and then down the lovely valley of the Firehole River into geyserland. There are more geysers in Yellowstone than in all the rest of the world, and the greatest of them are here in the Lower and Upper Basins. The hiss of steam, low, subterranean mutterings and the roar of geysers in action make this landscape a scene from the Inferno. You see Fountain, Great Fountain, Riverside and Giant geysers, Morning Glory Pool and Fountain Paint Pot, and reach Old Faithful for dinner and the night.

The most famous geyser in the world, Old Faithful may be depended upon to stage its

almost hourly shows for your special benefit. Approximately every sixty-five minutes it growls and hisses for a moment, and then leaps into action sending its glorious plume of boiling water 120 or more feet into the sky.

Old Faithful is a perfect spot for your first stay in Yellowstone and offers a variety of attractions that will make your time here seem all too short. Besides the many nearby geysers, you will see the iridescent turquoise of Morning Glory Pool with its flower-tinted cone . . . Black Sand Pool and Sapphire Springs . . . Firehole Lake with its flame-like streamers of gas bubbling to the surface, Chinaman Pool and numerous other steaming pools and springs.

*Yellowstone's Ranger-Naturalists are always on hand to give interesting explanations of the numberless wonders of the Park.*





*Giant Geyser, though an irregular performer, is the largest in the Park. At full discharge it sends its huge stream of boiling water and steam from 200 to 250 feet in the air. The rumble and roar of the geysers can be heard for long distances in the clear mountain air.*







*Across the Firehole River clouds of drifting steam mark the Firehole Geyser Basin—another reason why beautiful Yellowstone is the most photographed of our National Parks.*

There is an enclosed swimming pool and a museum. A variety of short walking trips may be taken with the ranger-naturalists, and longer trips made on horseback with colorful wranglers who know the phenomena of the Park.

Old Faithful Inn itself is built wholly of native materials. Within its friendly walls, you dine, dance, play and meet congenial fellow travelers before the great open fireplace.

The following day, your caravan moves on from Old Faithful past the beautiful Kepler Cascades of the Firehole, and over the Continental Divide. Here is the Rocky Mountain watershed that sends the rivers on one side flowing down to the Atlantic and the Gulf of Mexico, and on the other side, to the Pacific. To the south lie Shoshone Lake and the snowy peaks of the Teton range.

*Here is part of the crowd clustered around Old Faithful as it nears time for an eruption. This famous geyser discharges with almost clock-like regularity at intervals of about 65 minutes.*

## Lovely Yellowstone Lake

At Thumb, the road descends to the shore of Yellowstone Lake. 7,730 feet above sea level, this huge lake covering more than 130 square miles, is America's highest navigable body of water. Past Fishing Cone, the road skirts the shore of the Lake for many miles to the mouth of the Yellowstone River. Many Yellowstone visitors enjoy fishing or boating on the lake.

Big, hard-fighting trout of several species inhabit the deep, perpetually cold waters of the lake, and afford the finest kind of sport. Boats, guides and fishing tackle are available.

There are also a number of modern speedboats that were painstakingly hauled up to the lake. These mahogany beauties make regular







*Mile-and-a-half high Yellowstone Lake is ringed by the snow-capped Absaroka mountains.*

passenger trips and give a real thrill as they race over the sparkling water. Yellowstone Lake is one of the few places in America where you may still see wild swans—the last survivors of once-numerous flocks of these majestic birds. Pelicans are plentiful on Molly Island.

But now our tour continues. Winding through

beautiful Hayden Valley, the road continues, for the most part, close beside the Yellowstone River and then past Mud Volcano. Soon we cross over Chittenden Bridge, pass the Upper and Lower Falls and reach hospitable Canyon Hotel that is superbly situated at the head of the Grand Canyon of the Yellowstone.

*Pine trees cling precariously to the rocky walls of Kepler Cascades where the Firehole River drops down a series of picturesque falls and rapids.*







*At the head of the Grand Canyon, the Yellowstone River roars thunderously down the great falls. Here, from viewpoints on either side of the canyon, is one of the most gloriously colorful scenes on this continent.*



## Magnificently Colorful . . . the Grand Canyon

To many visitors, the Grand Canyon is the highpoint of Yellowstone. And well it may be, for the views from Artist or Inspiration Points are scarcely rivaled in all the world. A third of a mile wide and more than a thousand feet deep, the mighty gorge has been fantastically carved by the rushing waters of the Yellowstone River. Ranging in tone from pale lemon to tawny buff, the rock walls of the canyon are splashed with a hundred shades of crimson, blue and green—a glorious play of color that changes hourly with the passage of the sun. And far down at the bottom winds the jade green ribbon of the Yellowstone. Muted by distance, you hear the thunder of the Great Falls where the river leaps out and down, 308 feet into the gorge.

To those who have seen it, the Canyon remains one of the scenic highlights of a lifetime. Warm yet delicate in coloring, big but not so big that it staggers the imagination, the gorge

is as perfect and complete as a flawless gem.

Leaving Canyon Hotel, you continue northward through Dunraven Pass, where the road climbs the shoulder of Mt. Washburn. If you wish, you may take the more spectacular route to the very summit of the 10,317 foot mountain for the finest panorama of the Park.

Soon the road rejoins the Yellowstone River and you see Tower Falls. Flowing down from the high plateau, Tower Creek plunges down a 132-foot drop to join the Yellowstone in its long course eastward. Needle-like volcanic rocks stand sentinel at the head of the falls and nearby are strange buttresses of hard basalt forming palisades as regular as if they had been cut by man.

A little farther up the road is a forest of petrified trees. These fallen giants of hard stone reproduce, in astonishing detail and in a variety of rich colors, the bark and wood fibers of which they were once composed.

*Downstream from the main part of the canyon, the Yellowstone River winds in a narrow ribbon through the gray and buff walls of a rocky gorge. With the changing light, the river varies from silver to jade green.*



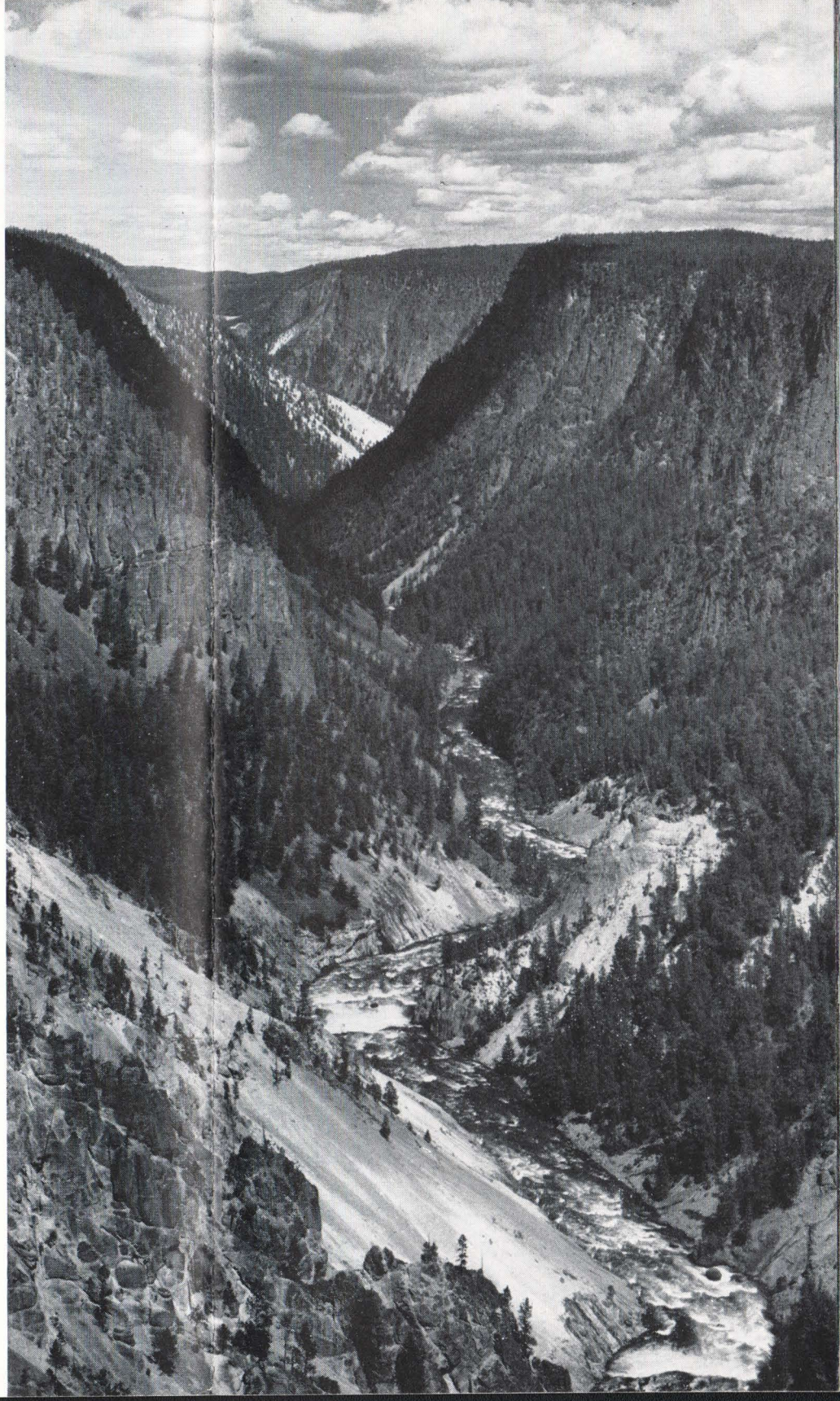




*Not far from Chittenden Bridge, the Yellowstone plunges down the Upper Falls. Seen from the lookout platform or from the camera viewpoint here, the fury and power of the cataract is indescribably impressive.*



*Looking northeast from Inspiration Point, the canyon of the Yellowstone spreads its splendor before you. Do an about-face here and the view is toward the lower falls. Rapids lace the dark water with creamy foam.*







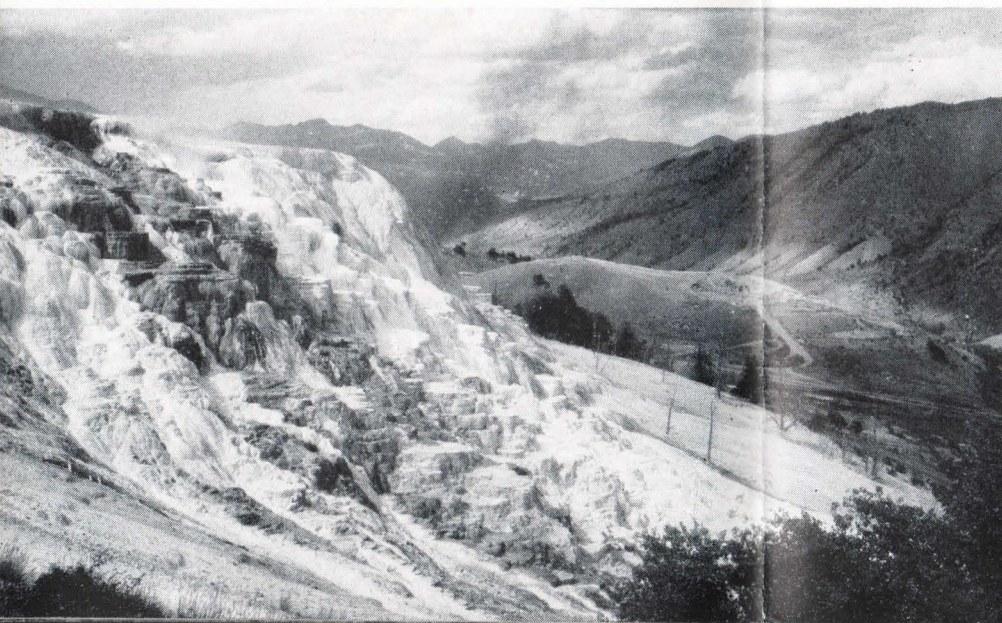
*Pulpit Terrace at Mammoth Hot Springs has been built up from the mineral laden waters of hot springs. Ashy white in its dry, natural state, the rocky walls are tinted rainbow colors by living algae in the waters.*

## Fantasy in Stone . . . Mammoth Terrace

Built up and sculptured by the hot mineral waters, the smooth terraces of white stone at Mammoth Hot Springs are given a thousand delicate tints of vermillion, orange, pink and

yellow by the living algae in the waters. You see Pulpit Terrace, Minerva, Cleopatra, White Elephant and the Devil's Kitchen.

Southward from Mammoth Hot Springs is Norris Geyser Basin with its collection of smaller geysers, hot springs and other phenomena. Here you will see the Black Growler, emitting super-heated steam at a temperature of 284 degrees.



*Here is huge Jupiter Terrace. These colorful formations change constantly in appearance as one spring temporarily dries up and another begins to flow. The more water, the more color is the general rule.*



*From a bluff just north of the community the buildings of Mammoth Hot Springs are spread before the camera. This is the administration center for Yellowstone Park, and, with the tourist facilities, comprises a small town in itself.*



The Chocolate Pots just beyond, demonstrate the remarkable chemical coloring from which they derive their name.

Depending on the gateway selected for exit from the Park, schedules of Park tours vary slightly. Complete itineraries for the various tours are shown elsewhere in this book.

This brief summary is a far from complete outline of what may be seen and done in Yellowstone. You might profitably spend an entire summer within the confines of the Park or—as many do—come back repeatedly.

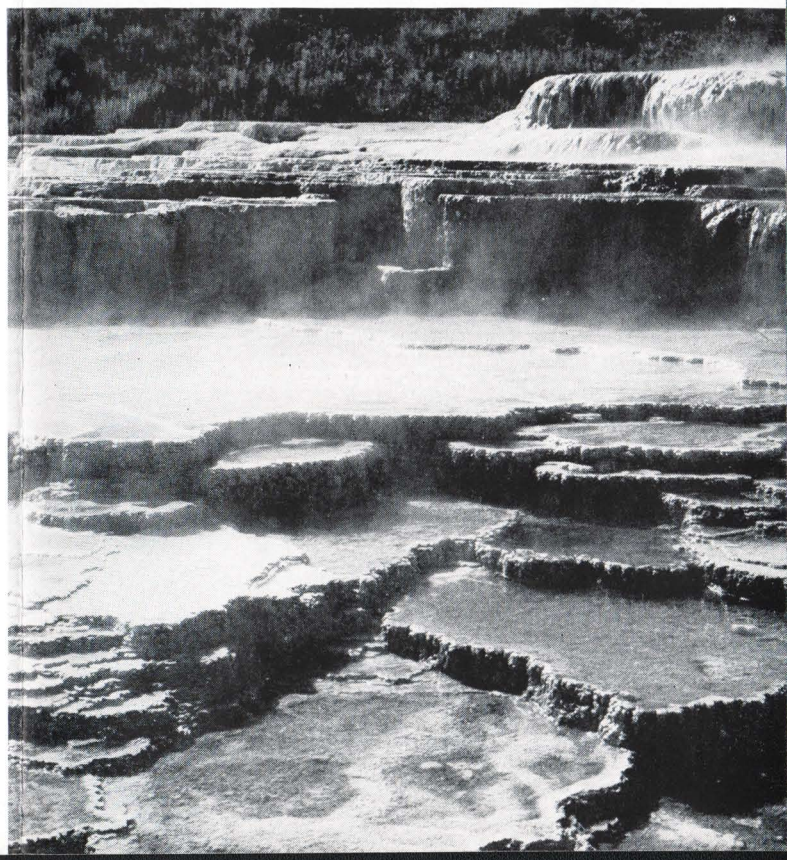
## Wild Life in Abundance

Yellowstone is a great wild animal refuge where the game is protected and therefore quite unafraid of humans. You will see dozens and dozens of the famous bears whose clumsy antics are an unfailing source of amusement. Among them is the grizzly bear, rightfully the most respected of all the wild animals. In meeting bears on the roads and paths, never tease the animals with food.

Almost anywhere in the Park you may catch glimpses of deer, and perhaps of buffalo, antelope, elk and mountain sheep as well as smaller animals such as marmots, beaver and chipmunks. You will have ample opportunity to

take short walking trips. You can fish and swim; join community singing around huge campfires; listen to lectures on the geology and animal life of the Park; see informal entertainments by the boys and girls who staff the lodges and hotels; join in the fun of informal dances.

Whether you have little time or much, no finer vacation spot exists than magnificent, incredible Yellowstone. Boundless in wonders and in hospitality, this is your Park, your playground . . . the magic land where dreams come true.



*Almost like man-made rice paddies are these dikes and terraces engineered by nature from minerals carried in the waters of the hot springs.*





## Yellowstone Fun

1. A tour party with a Ranger guide starts through Old Faithful geyser basin.
2. Dances and friendly gatherings are nightly features at the hotels and lodges.
3. Although boats are available, many anglers prefer to try their luck from Fishing Bridge.
4. Gamy, solid-fleshed trout like these reward the fisherman in Yellowstone Lake.
5. If you feel like having a dip, there's a warm, indoor pool at Old Faithful.







## Yellowstone Animals

1. Swift and handsome, the pronghorn antelope is more easily seen in Yellowstone than anywhere else.

2. A few bison have multiplied into large herds frequently seen from the roads.

3. This camera fan has moved in for a close-up of a good-sized black bear.

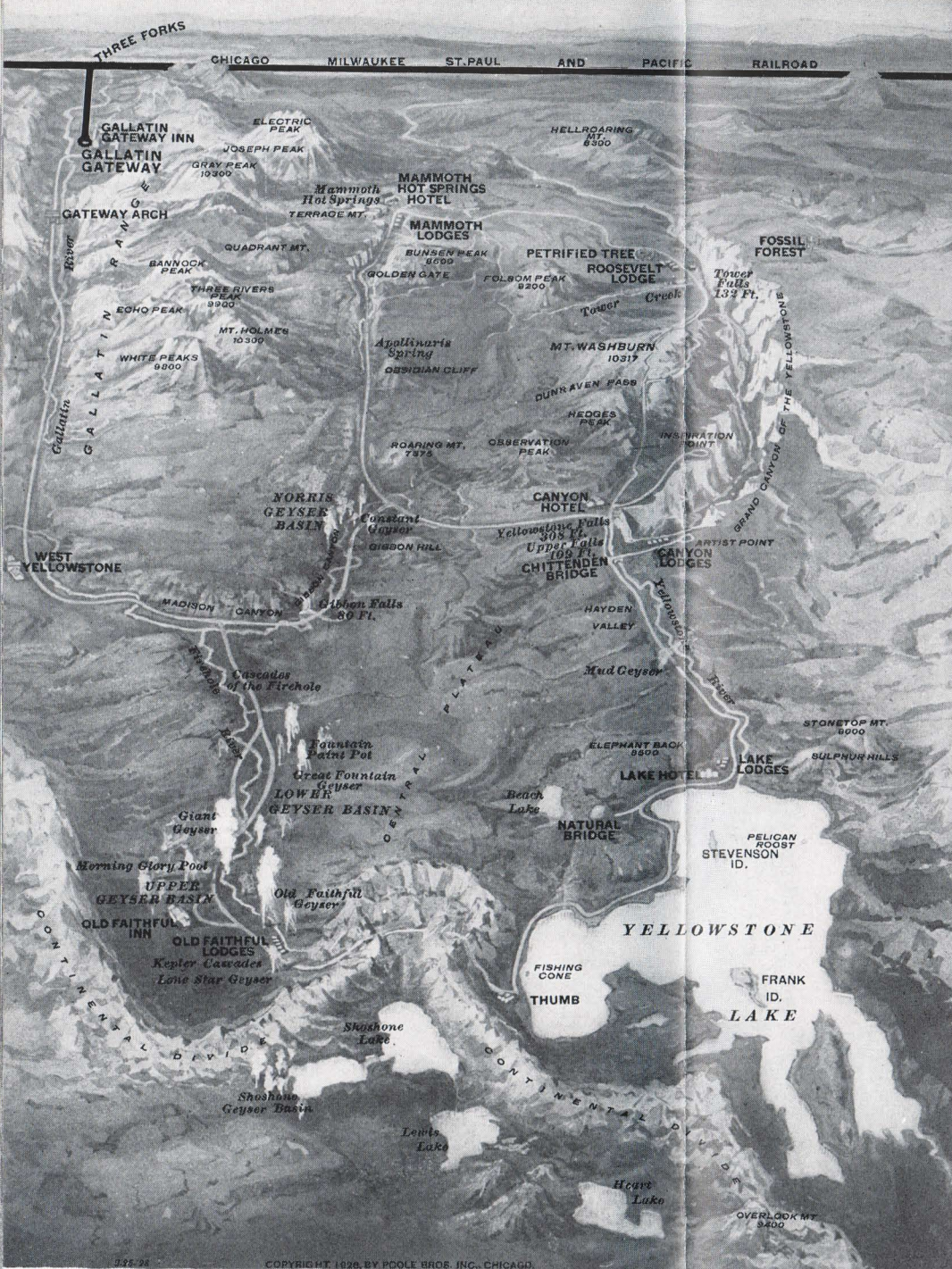
4. The horns of this young bull elk are "in the velvet" during the summer.

5. Deer are plentiful and comparatively tame throughout the Park.

25







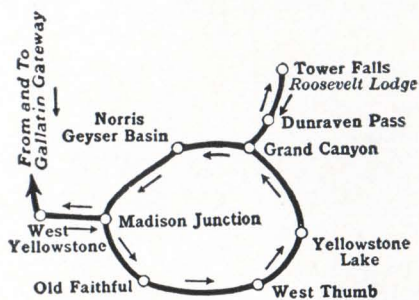
*This relief map of Yellowstone shows all the features of the Park, the road from Gallatin Gateway Inn—the geyser basin, the road over the loop of the Continental Divide, the lake, the river and the circle of road up to Mammoth Hot Springs.*

*Geysers are the trademark of Yellowstone. Here is another view of a steaming basin.*



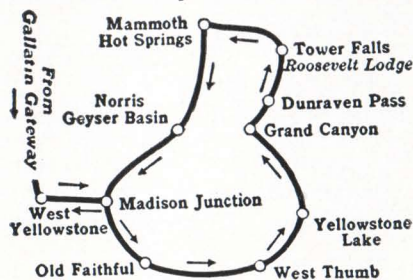


## Park Motor Transportation Schedule In and out the GALLATIN GATEWAY



		MEALS			
		Breakfast	Lunch	Dinner	Lodging
1st Day					
Lv. Gallatin Gateway	1:05 P.M.		1		
Ar. Old Faithful	6:11 P.M.			1	1
2nd Day					
Lv. Old Faithful	1:30 P.M.	1	1		
Ar. Grand Canyon (Via Artist Point)	5:10 P.M.			1	1
3rd Day					
Lv. Grand Canyon (Tower Falls Side Trip)	8:20 A.M.	1			
Ar. Grand Canyon	10:09 A.M.		1		
Lv. Grand Canyon	1:00 P.M.				
Ar. West Yellowstone	2:40 P.M.				
Lv. West Yellowstone	3:00 P.M.				
Ar. Gallatin Gateway	5:19 P.M.			1	

## In Gallatin Gateway out West Yellowstone



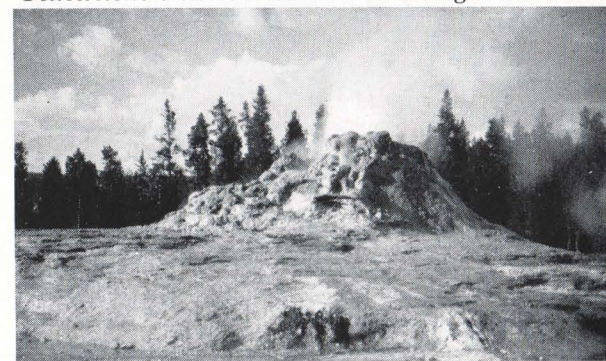
		MEALS			
		Breakfast	Lunch	Dinner	Lodging
1st Day					
Lv. Gallatin Gateway	1:05 P.M.		1		
Ar. Old Faithful	6:11 P.M.			1	1
2nd Day					
Lv. Old Faithful	1:30 P.M.	1	1		
Ar. Grand Canyon (Via Artist Point)	5:10 P.M.			1	1
3rd Day					
Lv. Grand Canyon	9:45 A.M.	1			
Ar. Mammoth Hot Springs	12:31 P.M.		1		
Lv. Mammoth Hot Springs	2:30 P.M.				
Ar. West Yellowstone	5:08 P.M.			1	



*Plenty of trout in the lakes and rivers.*



*Yellowstone visitors used to ride in stages like this.*



*Castle Geyser at ease.*

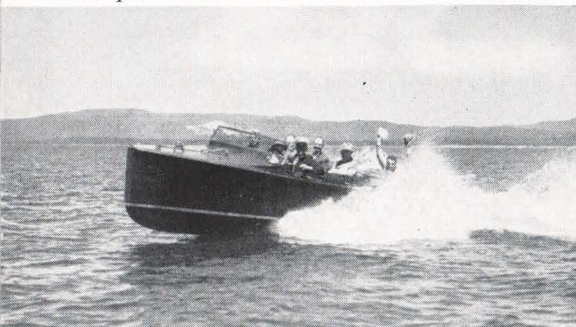


*Indian Chiefs of the Nez Perce Tribe.*





Rock pinnacles cluster around Tower Falls.



Take a speedboat ride on Yellowstone Lake.

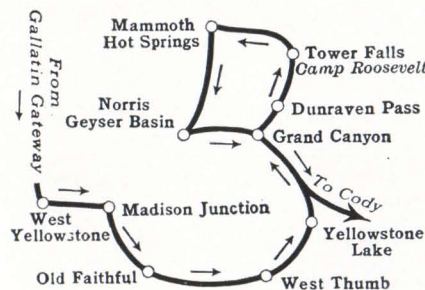


East and West flow the rivers of the continent.



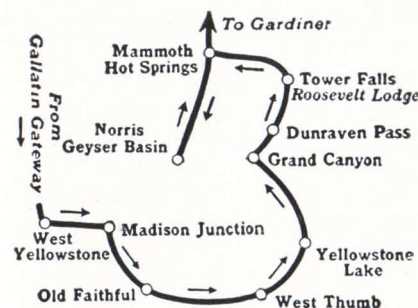
The Wedding Cake rises from a hot spring.

## In Gallatin Gateway out Cody



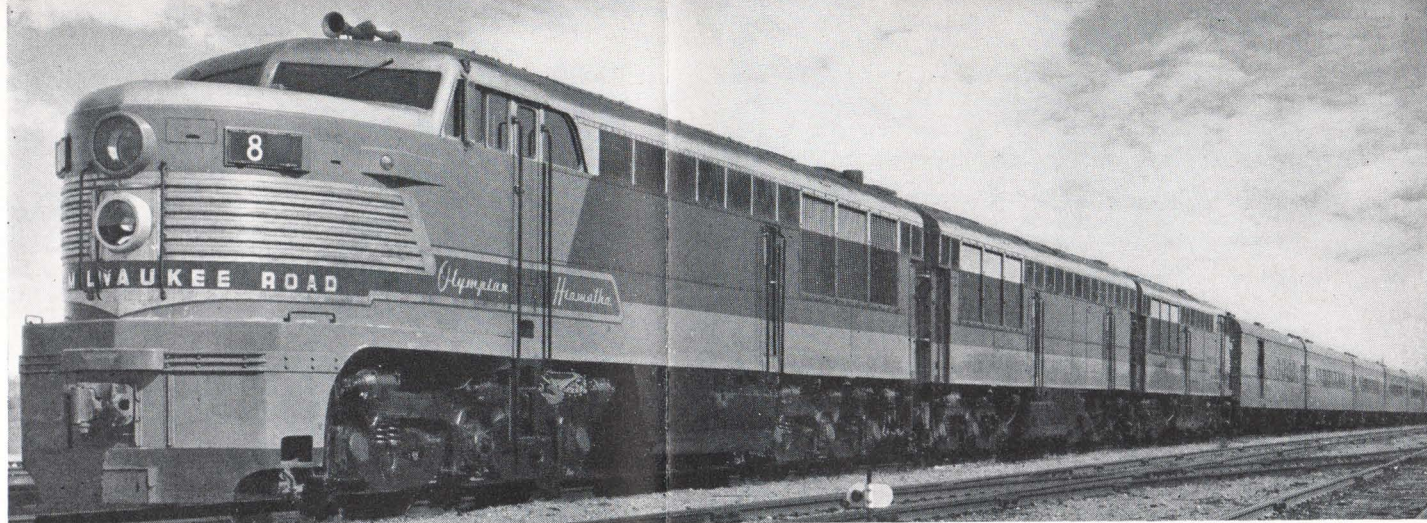
		MEALS			
		Breakfast	Lunch	Dinner	Lodging
1st Day					
Lv. Gallatin Gateway	1:05 P.M.		1		
Ar. Old Faithful	6:11 P.M.			1	1
2nd Day					
Lv. Old Faithful	8:30 A.M.	1			
Ar. Grand Canyon (Via Artist Point)	12:10 P.M.		1		
Lv. Grand Canyon	2:30 P.M.				
Ar. Mammoth Hot Springs	5:16 P.M.			1	1
3rd Day					
Lv. Mammoth Hot Springs	8:15 A.M.	1			
Ar. Grand Canyon	10:21 A.M.		1		
Lv. Grand Canyon	1:30 P.M.				
Ar. Cody Inn	5:51 P.M.			1	

## In Gallatin Gateway out Gardiner



		MEALS			
		Breakfast	Lunch	Dinner	Lodging
1st Day					
Lv. Gallatin Gateway	1:05 P.M.		1		
Ar. Old Faithful	6:11 P.M.			1	1
2nd Day					
Lv. Old Faithful	1:30 P.M.	1	1		
Ar. Grand Canyon (Via Artist Point)	5:10 P.M.			1	1
3rd Day					
Lv. Grand Canyon	2:30 P.M.	1	1		
Ar. Mammoth Hot Springs	5:16 P.M.			1	
Lv. Mammoth Hot Springs	7:00 P.M.				
Ar. Gardiner	7:20 P.M.				





For extra luxury and speed . . .

## THE OLYMPIAN *Hiawatha*

Part of the fun of your trip to Yellowstone will be the ride on The Milwaukee Road's super-speed Olympian HIAWATHA—only one night en route from Chicago.

Equipment of this new Speedliner includes private-room sleepers with glass-enclosed Sky-top Lounge for sky-high and horizon-wide scenic views. The luxurious double bedrooms have enclosed lavatory, full length mirror, clothes closet, air conditioning and radio controls, circulating ice water and electric outlet. Adjoining bedrooms open to form connecting suites. The cozy roomettes, for those who travel alone, have room facilities in more compact form.



The Olympian HIAWATHA also carries The Milwaukee Road's unique Touralux sleeping cars that offer berth comfort and privacy at intermediate fares. The 48-seat Luxurest coaches have individual reclining chairs and spacious lounging rooms for real comfort at lowest cost. Open to all passengers on the train are the striking diner and the distinctive Tip Top Grill—a full car with snack section and cocktail room that provides additional lounging space. All cars are air conditioned for cleanliness and comfort, and wired for station announcements and radio entertainment.

## Additional service on the electrified COLUMBIAN

This air conditioned train provides accommodations in standard Pullman sleepers with berth sections and bedrooms; also in improved tourist sleeping cars and Hiawatha coaches. You enjoy the thrill of electric operation through the Belt Mountains and Montana Canyon.

The COLUMBIAN is especially convenient for travel to Yellowstone. Westbound, passengers reach Three Forks in the morning, have lunch at Gallatin Gateway Inn and leave for the Park immediately afterward. Those traveling on the Olympian HIAWATHA reach Three Forks in mid-afternoon and remain at the Inn until after lunch the following day. By eliminating the stay at the Inn, you save money traveling on the COLUMBIAN. There is also some saving of time from Chicago despite the more leisurely schedule of this train.



# GENERAL INFORMATION

## Prepaid, All-Expense Tours Personally Escorted

Many Yellowstone Park travelers prefer to travel with special parties of congenial people under the popular all-expense plan. These tours will be operated during the Yellowstone Park season and those desiring to join one of the parties should call on any of the Chicago, Milwaukee, St. Paul and Pacific Railroad travel bureaus shown on the opposite page of this booklet or write direct to Mr. H. Sengstacken, Passenger Traffic Manager, The Milwaukee Road, Union Station, Chicago 6, Ill.

## The Park Season

The regular Park season is June 19th to September 9th.

## Motor Transportation

The Yellowstone Park Company, under contract with the Government operates a transportation line between the Park entrances and the various hotels and points of interest.

## Hotels

All service is under the supervision of the Government and is maintained at a high standard at rates fixed by the Government.

Each hotel is individual in character and architecture, completely and modernly equipped.

Old Faithful Inn is a striking structure of logs and stone. Its unusual lobby is 75 feet square and 92 feet high to the peak of the roof, with balconies around three sides.

Old Faithful Geyser is nearby the Inn, and not far away are many other geysers too numerous to mention here.

The Canyon Hotel, one of the finest hotels in the country with every comfort and convenience, is particularly well known for its spacious and beautiful plate-glass enclosed lounge. It has a wonderful setting high up on one side of Yellowstone Canyon, not far from the Lower Falls.

Mammoth Hot Springs hotel is most modern in style and appointments.

## The Climate

Far from the least attraction of an invigorating outing is the climate. An average elevation of 8,000 feet brings a clear and bracing atmosphere. Hot mineral baths and outdoor sleeping, best of Nature's medicines, may be enjoyed throughout the season. During the tourist season the mean average temperature ranges from 54° to 64° with a maximum of 88°. There is little choice as to the best time for visiting the Park. Early summer finds more snow in the mountains; August and September bring floral decorations in all their beauty and charm.

## What to Wear

Warm clothing should be worn, and one should be prepared for sudden changes of temperature common at an altitude of 7,500 feet. Men should have medium weight overcoats and sweaters, and women should have coats or sweaters. Slacks or riding breeches are recommended for both men and women. Stout shoes should be worn as they are most comfortable and best suited for walking about the geysers, terraces and other formations. Tinted glasses, serviceable gloves and field glasses will be found useful.

## Park Administration

Yellowstone, like all other National Parks, is under the supervision of the National Park Service, with a local superintendent located at Mammoth Hot Springs, headquarters of the Park administration.

## Church Services

Religious services are conducted at convenient locations in the park. Information provided at hotel desks.

## Medical Service in Yellowstone

Physicians and surgeons with headquarters at Mammoth Hot Springs are available for call to any place in the Park. Trained nurses and a dispensary are at each of the hotels in the Park. At Mammoth is a well-equipped hospital with skilled personnel.

## Saddle Horse Trips and Guides

Saddle horses, as well as competent guides, are available at all hotels and lodges at established rates made by the National Park Service. Those who desire to do so may get far off the beaten path and into the more remote and scenic regions of the Park.

## Cost of Park Tour from Gallatin Gateway

(which will be added to the excursion fare to Gallatin Gateway)

	Including Motor Transportation and Meals and Lodging
For Adults and children 12 years old and over . . . . .	\$44.75
For children 8 years old and under 12 years . . . . .	32.25
For children under 8 years . . . . .	22.40
(Federal tax extra)	

Longer time than is provided by the regular "two-and-one-half days" tour may be spent at the stopover points, if desired. For such additional time, meals and lodging are on the basis of \$8.00 to \$11.00 per day. American plan. (Children's Tickets for motor transportation and hotel accommodations are sold at Park entrances only.)

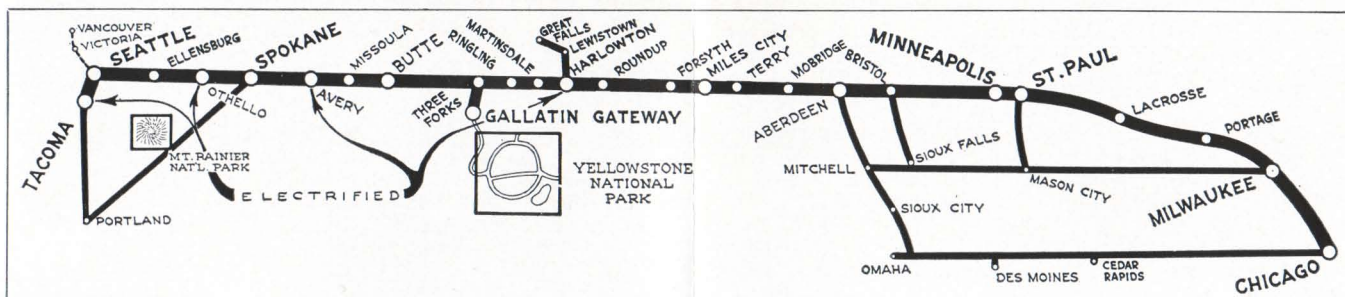
## Baggage

The Yellowstone Park Company will carry free, two pieces of hand baggage for each person, not to exceed sixty pounds in total weight, with a limited liability of \$25.00 for each piece for loss or damage. Passengers desiring additional protection may obtain an insurance policy at small cost from the transportation agent at Gallatin Gateway. Trunks cannot be transported in the automobiles. Tourists contemplating a prolonged trip through the Park can make arrangements with representatives of the Transportation Company at Gallatin Gateway for the forwarding of trunks.

Railroads store baggage free at Gallatin Gateway, Three Forks, Butte, Livingston, Gardiner, Cody, Frannie or Billings, West Yellowstone, Pocatello, Idaho Falls, Ogden or Salt Lake City, for actual length of time spent in the Park. Baggage may be checked to Gallatin Gateway, Gardiner, Cody or West Yellowstone.

Passengers entering the Park via one station and leaving via another can make arrangements for free checking of baggage to station via which they leave the Park.





## TRAVEL AND INFORMATION BUREAUS

ABERDEEN, S. D., "Milwaukee" Station, 1 North Main St. Phone 2219  
 E. J. Albrecht Division Passenger Agent  
 ATLANTA 3, GA., 521-522 Healey Bldg. Phone Walnut 6585  
 E. C. Derr General Agent  
 BELOIT, WIS., "Milwaukee" Station Phone College 257  
 H. M. HARRIS Passenger and Ticket Agent  
 BOSTON 8, MASS., 294 Washington St. Phone Liberty 2-9812  
 W. D. Goss General Agent  
 BUFFALO 3, N. Y., 295 Main St. Phone Washington 0634  
 W. A. Stauffer General Agent  
 BUTTE, MONT., 47 West Park St. Phone 3251  
 H. B. Brownell Assistant General Passenger Agent  
 CEDAR RAPIDS, IOWA, "Milwaukee" Station, 401 First Ave. S. E. Phone 6027  
 B. P. Dvorak Passenger and Ticket Agent  
 CHICAGO 3, ILL., 711-100 West Monroe Bldg. Phone Central 6-7600  
 V. L. Hitzfeld General Agent Passenger Department  
 R. V. Gertz, 179 W. Jackson Blvd., Zone 4 City Ticket Agent  
 CINCINNATI 2, OHIO, 49 East Fourth St. Phone Main 5010  
 G. C. Armstrong General Agent  
 CLEVELAND 14, OHIO, 925 Euclid Ave. Phones Main 1-2457-58  
 R. G. Davisson General Agent  
 CLINTON, IOWA, 60 Fourth Ave. Phone 712  
 M. O. Schorr Passenger Agent  
 COUNCIL BLUFFS, IOWA, 1300 South 6th St. Phone 2767  
 J. I. McGuire Agent  
 DAVENPORT, IOWA, Union Station, Foot Harrison St. Phone 2-5304  
 A. T. Paulsen Passenger and Ticket Agent  
 DES MOINES 9, IOWA, 517 Locust St. Phone 3-6468  
 H. W. Warren Division Passenger Agent  
 DETROIT 26, MICH., 132 W. Lafayette Blvd. Phones Woodward 2-3716-17  
 E. D. Schaffer General Agent  
 DUBUQUE, IOWA, "Milwaukee" Station, 3rd St. and Central Ave. Phone 134  
 F. M. Duffy Passenger and Ticket Agent  
 DULUTH 2, MINN., 420 West Superior St. Phones Melrose 524, Sup. 2-2502  
 P. P. Gehrig General Agent  
 EVANSTON, ILL., 909 Church St. Phone University 4-1000  
 H. F. Bitz Agent  
 EXCELSIOR SPRINGS, MO., "Milwaukee" Station Phone 177  
 H. F. Owen Passenger and Ticket Agent  
 FREEPORT, ILL., "Milwaukee" Station, 410 E. Stephenson St. Phone Main 1302  
 R. L. Fuller Ticket Agent  
 GREEN BAY, WIS., "Milwaukee" Station, End S. Wash. St. Phone Adams 866  
 E. D. Crim Passenger and Ticket Agent  
 INDIANAPOLIS 4, IND., 420 Board of Trade Bldg. Phone Franklin 7582  
 W. G. Lacey General Agent  
 JANESVILLE, WIS., "Milwaukee" Station, 225 N. Hight St. Phone 6946  
 J. M. Brown Passenger and Ticket Agent  
 KANSAS CITY 6, MO., 202 East 11th St. Phone Victor 6390  
 M. A. Oberg General Agent Passenger Department  
 LA CROSSE, WIS., "Milwaukee" Sta., St. Andrew & Caledonia Sts. Phone 76  
 A. O. Sundet Ticket Agent  
 LOS ANGELES 14, CALIF., 210 W. Seventh St. Phone Trinity 9555  
 H. W. Porter General Agent  
 MADISON 3, WIS., "Milwaukee" Station Phone 5-4561  
 R. K. Hurlbut District Passenger Agent  
 MASON CITY, IOWA, "Milwaukee" Station Phone 82  
 H. W. Frazee Passenger and Ticket Agent  
 MALES CITY, MONT., "Milwaukee" Station, No. 10th St. Phone 362  
 W. C. Boyle Passenger and Ticket Agent  
 MILWAUKEE 2, WIS., 210 E. Wisconsin Ave. Phone Daily 8-1864  
 C. F. Dahnke Assistant General Passenger Agent  
 J. P. Paulus, Station Ticket Agent, 4th Ward Pk. Phone Marquette 8-6120  
 MINNEAPOLIS 2, MINN., 527 Marquette Ave. Phone Fillmore 1616  
 H. M. Larson Assistant General Passenger Agent  
 D. G. McMillan, 700 Marquette Ave. G.A.P.D. Phone Fillmore 1616  
 S. F. Luce, Station Ticket Agent, 3rd Ave. So. Phone Fillmore 1616

WM WALLACE, Assistant Passenger Traffic Manager, Chicago 6, Ill.

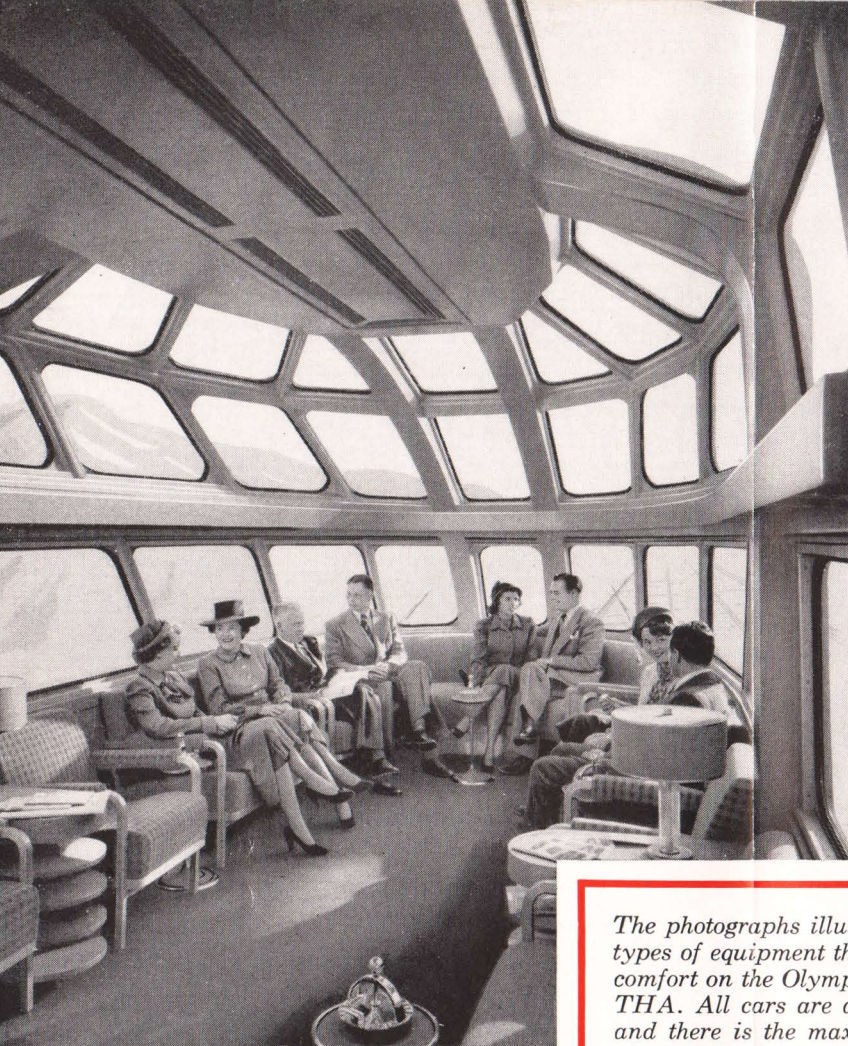
H. SENGSTACKEN, Passenger Traffic Manager, Chicago 6, Ill.

MISSOULA, MONT., "Milwaukee" Station. Phones 3186 & 6639  
 G. B. Baker Passenger and Ticket Agent  
 NEW ORLEANS 12, LA., 210 Baronne St. Phone Tulane 5678  
 C. T. Carter General Agent  
 NEW YORK 20, N. Y., 630 Fifth Avenue Phone Circle 7-1680  
 C. C. Burns General Agent Passenger Department  
 OMAHA 2, NEBR., 1611 Farnam Street Phone Jackson 4481  
 G. A. Henkens General Agent Passenger Department  
 OTTUMWA, IOWA, "Milwaukee" Station, Jefferson St. Phone 776  
 I. R. Carlson Passenger and Ticket Agent  
 PHILADELPHIA 9, PA., 123 S. Broad Street, Phones Pennypacker 5-0407 and 08  
 T. A. Morgan General Agent  
 PITTSBURGH 22, PA., 518-519 Oliver Bldg. Phones Atlantic 1-2458-39  
 C. M. Park General Agent  
 PORTLAND 4, ORE., 528 S. W. Yamhill St. Phone Atwater 1397  
 F. A. Swanson General Agent  
 RACINE, WIS., Union Station, 709-15 Wisconsin Ave. Phone Jackson 4-7333  
 W. E. Ernst City Passenger and Ticket Agent  
 RAPID CITY, S. D., "Milwaukee" Station, 307 Seventh St. Phone 454  
 L. H. Shuck Passenger and Ticket Agent  
 ROCKFORD, ILL., 625 South Main Street Phone 4-3381  
 L. E. Martin General Agent  
 ROCK ISLAND, ILL., "Milwaukee" Station, 1st Ave. & 17th St. Phone 779  
 W. E. Biggs Passenger and Ticket Agent  
 ST. LOUIS 1, MO., 611 Olive Street Phone Chestnut 0337  
 H. E. Ridenour General Agent  
 ST. PAUL 2, MINN., 362 St. Peter Street Phone Cedar 4491  
 P. J. Nikolai General Agent Passenger Department  
 SALT LAKE CITY 1, UTAH, 310-311 Dooly Building Phone 3-4184  
 J. G. MacDonald General Agent  
 SAN FRANCISCO 5, CALIF., 681 Market Street Phone Garfield 1-5951  
 A. Tansley District Passenger Agent  
 SEATTLE 1, WASH., 4th Ave. and Union St. Phone Eliot 6800  
 R. E. Carson General Agent Passenger Department  
 SIOUX CITY 14, IOWA, "Milwaukee" Station, 2nd & Pierce Sts. Phone 8-0511  
 T. L. Ericson Station Ticket Agent  
 SIOUX FALLS, S. D., "Milwaukee" Station, 5th St. & Phillips Ave. Phone 217  
 J. D. Wohlenberg General Agent  
 SPOKANE 8, WASH., North One Post Street Phone Main 2261  
 J. G. Cain District Passenger Agent  
 TACOMA 2, WASH., 112 South Ninth Street Phone Main 2101  
 M. P. Burns District Passenger Agent  
 R. A. Grummel, "Milwaukee" Sta., S. 25th & A Sts. Station Ticket Agent  
 TERRE HAUTE, IND., 300 Rea Bldg. Phone Crawford 2852  
 F. W. Baker Division Passenger Agent  
 TORONTO 1, ONT., 68 Yonge Street Phone Waverley 6538  
 R. S. Moore Canadian Passenger Agent  
 TULSA 3, OKLA., 321 S. Boston Street Phone 2-9921  
 H. A. Washburn Commercial Agent  
 VANCOUVER, B. C., 793 Granville Street Phone Marine 8177  
 E. C. Chapman General Agent  
 VICTORIA, B.C., 612 View St. Phone Beacon 2622  
 C. E. Blaney, Jr. Agent  
 WASHINGTON 5, D. C., 229 Shoreham Bldg. Phones Republic 1038-39  
 T. A. Morgan General Agent  
 WAUSAU, WIS., "Milwaukee" Station, 739 Grant St. Phone 5166  
 H. C. Cleveland Passenger and Ticket Agent  
 WINNEPEG, MAN., 211 Portage Avenue Phone 95-753  
 J. H. Bradley General Agent  
 WINONA, MINN., "Milwaukee" Station, Mark and Center Sts. Phone 4062  
 J. T. Brandt Passenger and Ticket Agent  
 WINSTON-SALEM 3, N. C., 403 N. Main Street Phone 6502  
 R. E. Anderson Traveling Passenger Agent

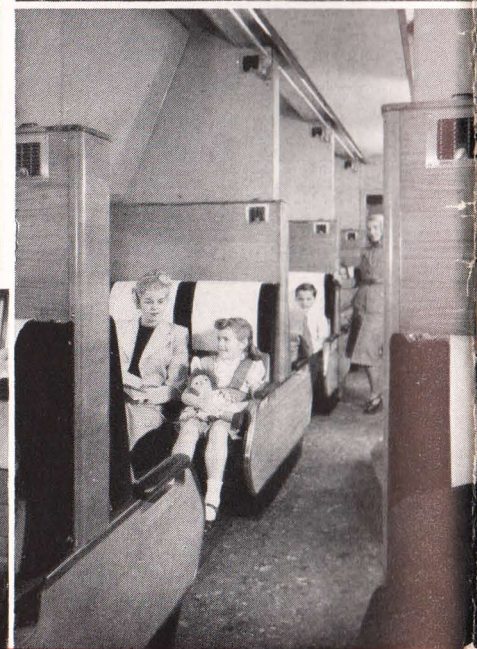
O. R. ANDERSON, General Passenger Agent, Seattle 1, Wash.

# THE MILWAUKEE ROAD





*The photographs illustrate the latest types of equipment that insure your comfort on the Olympian HIAWATHA. All cars are air conditioned and there is the maximum amount of extra lounging space whether you travel in Luxurest coaches, Touralux cars or private-room sleepers. You'll enjoy the friendly hospitality of The Milwaukee Road.*



**THE MILWAUKEE ROAD**