

THE MILWAUKEE ROAD



Newest of the Speedliners...



TWIN CITIES
Hiawathas



Designed for your travel pleasure ...

1948 is a Hiawatha year! It is a year in which The Milwaukee Road's Speedliner fleet has been re-equipped and enlarged to provide even finer service than ever before in its distinguished history.

This booklet pictures and describes the cars of the PM Twin Cities HIAWATHA. They are typical of the equipment of the daytime Hiawathas, and typical of the advanced design and workmanship characterizing cars built in The Milwaukee Road's own car building shops.

Colorful upholstery fabrics, finely finished, modern wall materials and fresh, imaginative decorative schemes combine to give the Hiawatha a cheerful and restful atmosphere. The physical

comfort of the passengers is assured by scientific seat design, draught-free air conditioning, a smooth, silent ride and the provision of every necessary facility for enjoyable travel.

More than twelve million miles of Hiawatha service since 1935 have given The Milwaukee road a vast fund of experience in the design, construction and operation of high speed, luxury trains. This knowledge has been fully utilized in giving today's Hiawathas the ideal combination of pleasing beauty, satisfying comfort and perfection of appointments.

H. SENGSTACKEN

Passenger Traffic Manager
Chicago 6





Space—and plenty of it — is a big feature of Hiawatha coaches. Upholstery colors vary in alternate cars; lime and burgundy in one, gray and green in the next. The wide, easy to reach luggage racks carry fluorescent light tubes in their outer edge that diffuse an even, glare-free illumination.

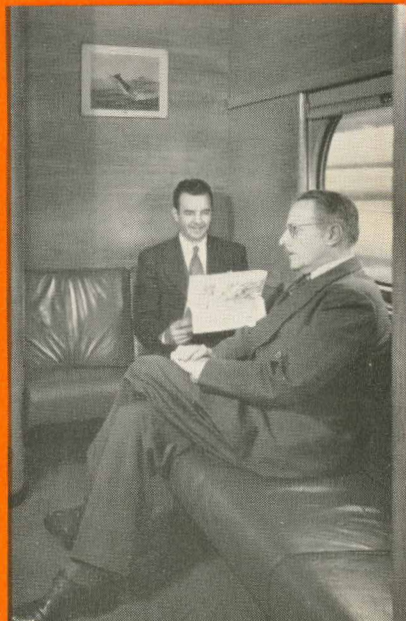
Coach chairs are of the "Sleepy Hollow" type, carefully contoured to provide maximum relaxation, and padded with soft foam rubber. Seat backs recline and each passenger has an adjustable footrest. Pilasters between the wide windows are paneled with natural colored walnut, hand-rubbed to a smooth finish.





The men's lounge is exceptionally large and provides comfortable seats for ten. Structural glass panels separate the smoking and lavatory sections. There is a well-lighted, angled mirror and a 110-volt electric outlet.

Finished with green plastic and ivory walls, the dainty lounge for women is decorated with colorful flower prints and has a wide sofa. There is a full length mirror in the door as well as the large one above the wash basins.





An unusual decorative scheme visually divides the big, 48-seat dining car into three sections of four tables each. The center section is finished with blue-green wallpaper with a darker figure. The ceiling and coves are lemon yellow. A strikingly handsome car with an air of unusual speciousness.





Snow white linens and gleaming silver add to the enjoyment of famous Milwaukee Road meals selected from a la carte or table d'hote menus. The dining car steward has a microphone connected to the train's speaker system. All passengers on the train are welcome in the diner as well as in the Tip Top Tap car.

The cocktail lounge in the Tip Top Tap car on the PM Twin Cities HIAWATHA has a smart, curved bar backed by a pantry. Walnut wall panels and irregularly shaped booths upholstered in a variety of pleasing colors give this room an air of easy informality. There is a radio for music and entertainment.





Different in design but with the same facilities and service is the Tip Top Tap car on the AM Twin Cities HIAWATHAS. These cars amplify lounging and dining space on both trains. Beverages of all kinds, sandwiches and light snacks are provided. A pleasant spot to while away an hour or two.

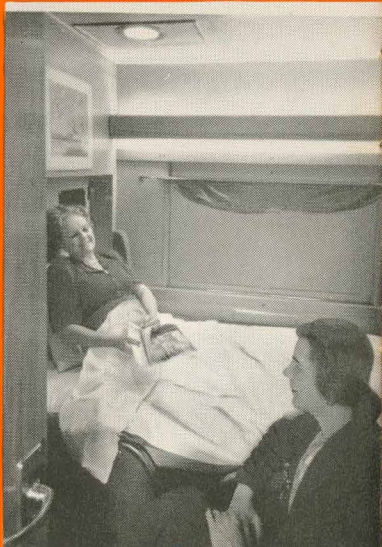
Hiawatha parlor cars are as quiet and luxurious as the reading room of a fine club. The big, deeply upholstered chairs pivot freely so that you may face in any direction, and have adjustable, reclining backs. Magazines and writing materials are provided, and there is a small drop-leaf table beside each seat.





Each parlor car has a new type of drawing room with four facing seats and a comfortable pull-up chair. There is also a private lavatory. These rooms provide full privacy for parties of three to five people.

The seats in the drawing room may be made down into a delightfully comfortable standard berth for the convenience of invalids or elderly travelers. This is a feature found only on The Milwaukee Road's HIAWATHAS.

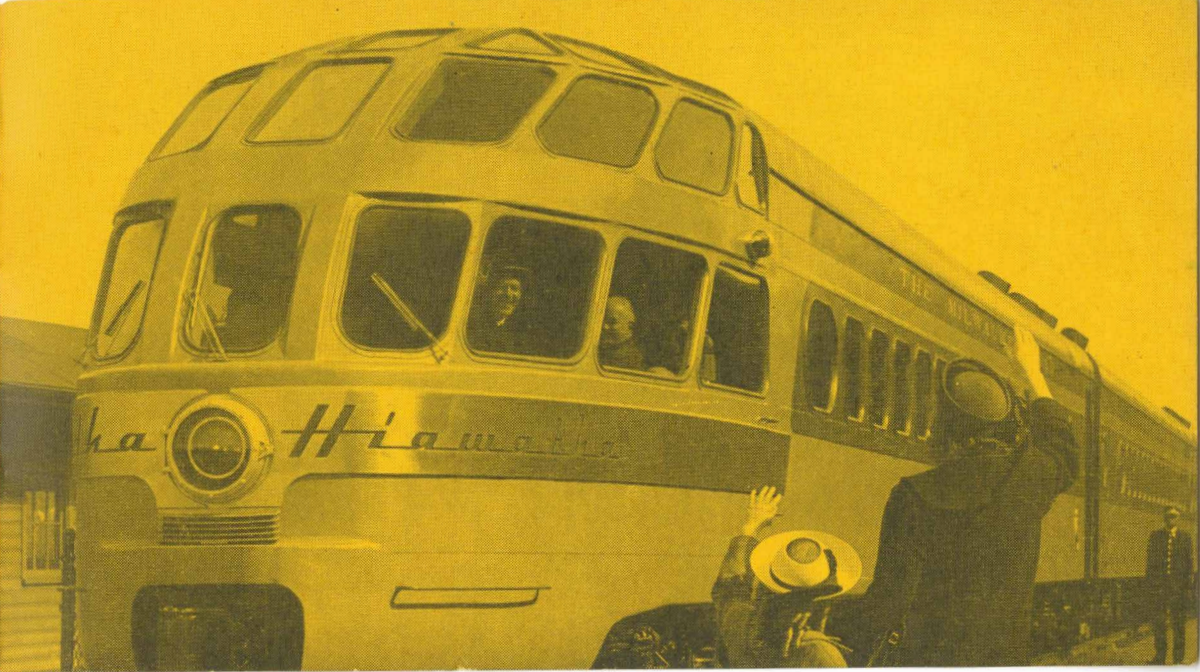


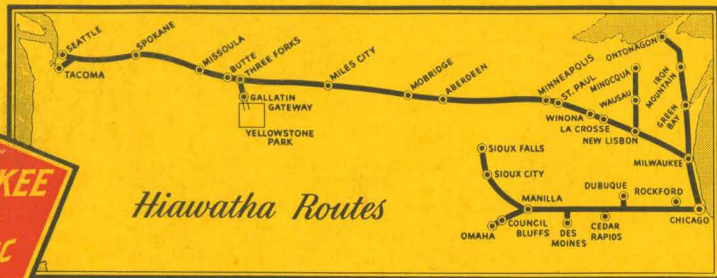
Here, in sofas or in comfortable chairs, passengers may read, smoke or chat. The wide expanse of windows permit thrilling scenic views right from trackside to the very crest of the Mississippi palisades. The daytime schedules of the Twin Cities HIAWATHAS permit full enjoyment of the scenic route.





The after end of the last parlor car on each of the Twin Cities HIAWATHAS is given over to a Skytop Lounge observation room open to all parlor car passengers. Almost wholly enclosed in glareproof, heat resistant glass, there is nothing like this delightful room on any other train.





Twin Cities HIAWATHAS

Morning and Afternoon:
Chicago-Milwaukee-St. Paul-Minneapolis

Olympian HIAWATHA

Chicago-Pacific Northwest

Midwest HIAWATHA

Chicago-Des Moines-Omaha
Sioux City-Sioux Falls

Chippewa HIAWATHA

Chicago-Milwaukee-Green Bay
Upper Michigan

North Woods HIAWATHA

New Lisbon-Wausau-Minocqua