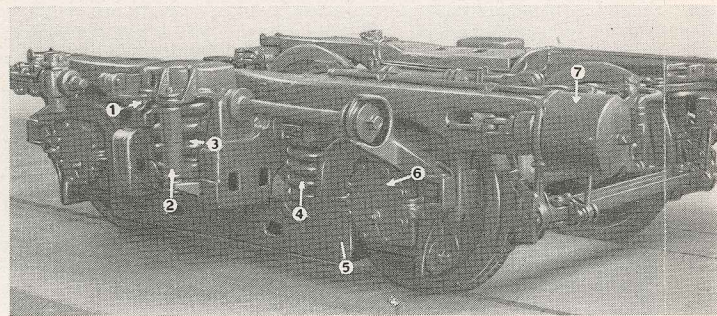


Performance proved

...by millions of miles and millions of passengers

THE Milwaukee Road's HIAWATHAS have long been recognized as providing "the smoothest ride on rails." These newest model Speedliners carry velvety smoothness and hushed silence to a new peak of perfection.

The superb ride begins with the exclusive Milwaukee Road type of truck pictured below. Rubber mountings are generously used in the trucks, couplers and buffer plates to prevent the transmission of vibration and sound into the body of the car. Walls, floors and ceilings are treated with plastic sound deadener and with highly efficient insulating materials. The braking system is of a



new and advanced type with electrically actuated controls that permit exceptionally smooth and rapid deceleration.

Drawn by 4,000 horsepower diesel-electric locomotives, the Twin Cities HIAWATHAS roll on heavy rail over a thoroughly seasoned, well-ballasted roadbed. With easy gradients and wide-radius curves, it is the natural high speed route—and the *only* double tracked route all the way between Chicago and the Twin Cities.

WM. WALLACE....Asst. Passenger Traffic Mgr., Chicago, Ill.
H. SENGSTACKEN.....Passenger Traffic Mgr., Chicago, Ill.

1—Lateral shock absorber. 2—Hydraulic shock absorber. 3—Bolster spring. 4—Equalizer spring. 5—Equalizer. 6—Anti-friction bearing. 7—Brake cylinder. This silent and smooth riding truck is specially designed to reduce sidesway. There are lateral shock absorbers, and the bolster springs and hydraulic shock absorbers are placed considerably outside of the wheels for added stability. Brakes are actuated by new electrical controls.

Northbound			
Union Station	MORNING HIAWATHA	AFTERNOON HIAWATHA	OLYMPIAN HIAWATHA
Lv. Chicago.....	10:30 am	1:00 pm	3:30 pm
Lv. Milwaukee.....	11:52 am	2:15 pm	4:45 pm
Lv. Watertown.....	12:44 pm		
Lv. Columbus.....	1:04 pm		
Lv. Portage.....	1:33 pm	3:34 pm	6:07 pm
Lv. New Lisbon.....	2:24 pm	4:11 pm	
Lv. Sparta.....	3:07 pm		
Ar. La Crosse.....	3:32 pm	5:00 pm	7:28 pm
Ar. Winona.....	4:09 pm	5:34 pm	
Ar. Red Wing.....	5:15 pm	6:32 pm	
Ar. St. Paul.....	6:05 pm	7:15 pm	9:45 pm
Ar. Minneapolis.....	6:45 pm	7:45 pm	10:15 pm

Morning Hiawatha Equipment

Skytop Lounge drawing room parlor car . . . drawing room parlor car . . . dining car, table d'hote and a la carte meal service . . . Tip Top Tap car, beverages and light refreshments; radio-equipped . . . reclining chair lounge coaches.

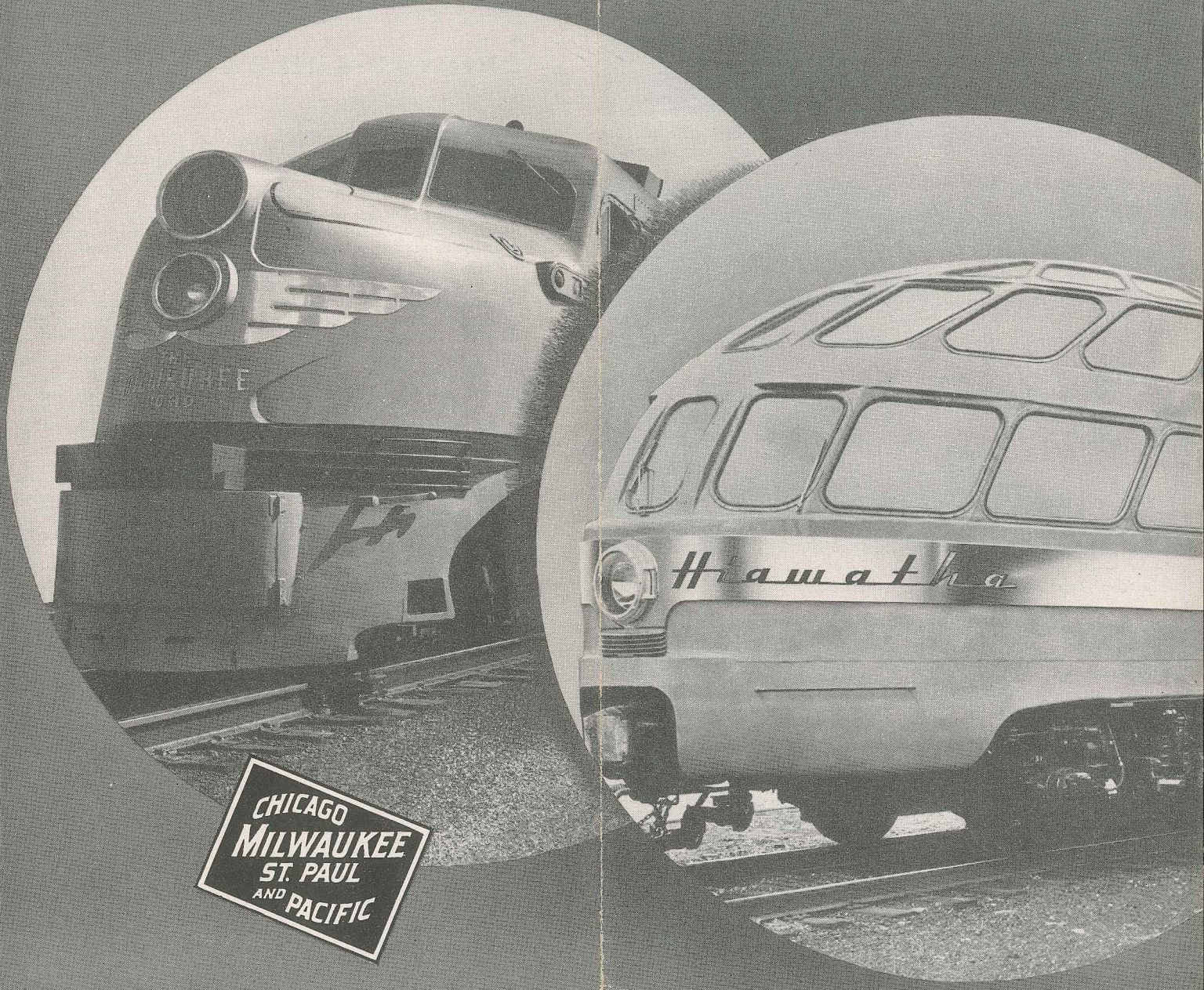
Southbound			
Milwaukee Road Station	MORNING HIAWATHA	AFTERNOON HIAWATHA	OLYMPIAN HIAWATHA
Lv. Minneapolis.....	7:50 am	12:30 pm	7:00 am
Lv. St. Paul.....	8:25 am	1:00 pm	7:30 am
Lv. Red Wing.....	9:03 am	1:38 pm	
Lv. Winona.....	9:59 am	2:34 pm	
Lv. La Crosse.....	10:33 am	3:08 pm	9:40 am
Lv. Sparta.....	10:55 am		
Lv. New Lisbon.....		3:57 pm	
Lv. Portage.....	11:56 am	4:32 pm	11:02 am
Lv. Columbus.....	12:20 pm		
Lv. Watertown.....		5:10 pm	
Ar. Milwaukee.....	1:20 pm	5:55 pm	12:25 pm
Ar. Chicago.....	2:40 pm	7:15 pm	1:45 pm

Afternoon Hiawatha Equipment

Skytop Lounge drawing room parlor car . . . drawing room parlor car . . . dining car, table d'hote and a la carte meal service . . . Tip Top Tap car, beverages and light refreshments; radio-equipped . . . reclining chair lounge coaches.

Fashioned for your travel pleasure

THE NEW TWIN CITIES Hiawathas





Upholstery materials of different colors in alternate cars give pleasing variety to the coaches. The large luggage racks are easy to reach.



Light meals at moderate cost are served in the snack section of the Tip Top Tap car. There is a radio for music and entertainment.



The cocktail lounge, also in the Tip Top Tap car, has a smart, curved bar, informal seating arrangements and a cheerful decorative scheme.

New design ideas . . . new beauty . . . new luxury

TWIN CITIES *Hiawathas*

CHICAGO—MILWAUKEE—LA CROSSE—ST. PAUL—MINNEAPOLIS

IT is far from easy to create trains that offer any marked improvements over the famed Twin Cities HIAWATHAS. Yet these new Milwaukee Road Speedliners present not one or two, but a whole series of triumphant advances in car design and construction.

These latest model HIAWATHAS are new from end to end, but they incorporate the knowledge and experience gained through more than *twelve million miles* of Hiawatha operation since 1935.

Throughout the train you will notice how fine craftsmanship and imaginative design have been combined to create a pleasingly cheerful and restful atmosphere. Rich floor coverings, colorful upholstery fabrics and modern wall materials such as English oak, bleached walnut, and linen-finished plastic are skillfully blended.

Your first impression of the coaches is one of airy spaciousness. The individual reclining chairs have adjustable footrests and are padded with restful foam rubber. There are wide luggage racks, and fluorescent tubes provide ample, glare-free light. At one end of the car is an exceptionally large men's lounge; at the other end is a dainty and complete lounge for women.

The Tip Top Tap car in the PM Hiawatha is a delightful innovation with its variously shaped booths and tables. Divided in the center by a curved bar backed by a pantry, this car has a smart cocktail lounge and a snack section. The late model Tip Top Tap car formerly carried on the PM Hiawatha is now on the AM, and is the *only* car that is not brand new.

With an unusual decorative scheme that seems to divide the car into three sections, the big diner seats 48 and has plenty of room

for all. Gleaming silver and snowy linens will add to your enjoyment of appetizing foods chosen from table d'hote or a la carte menus. The diner and Tip Top Tap are open to all passengers.

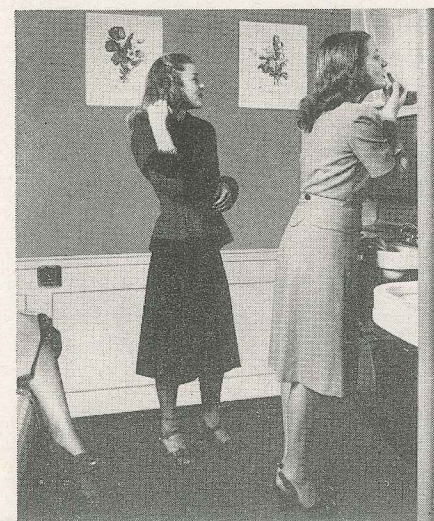
Each parlor car on the Twin Cities HIAWATHAS includes a drawing room with four facing seats and a pull-up chair—ideal for small parties, a card game or just friendly conversation. An entirely novel feature is the fact that the seat section can be made up into a standard berth. Each drawing room has a private lavatory and a 110 volt electric outlet.

The last parlor car on each train has a Skytop Lounge in its after end. Almost wholly enclosed in special glass that is glare-proof and heat resistant, this delightful room permits passengers to view everything from track side to the very crest of the Mississippi palisades. The Skytop Lounge is open to all parlor car passengers.

All cars on the Twin Cities HIAWATHAS are air conditioned for year 'round cleanliness and comfort, and have concealed loud speakers for station announcements or radio entertainment. Vestibules are carefully sealed against dust and dirt, and car steps are of the folding, disappearing type.

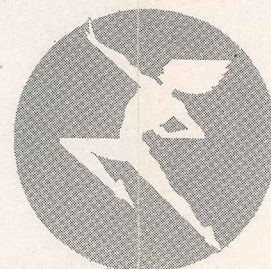
The Milwaukee Road has called upon its vast fund of experience in the design, construction and operation of high speed, luxury trains to make the Twin Cities HIAWATHAS outstanding in every respect. We think you will find in them a happy combination of pleasing beauty, restful comfort and perfection of appointments.

No extra fare on these fine trains

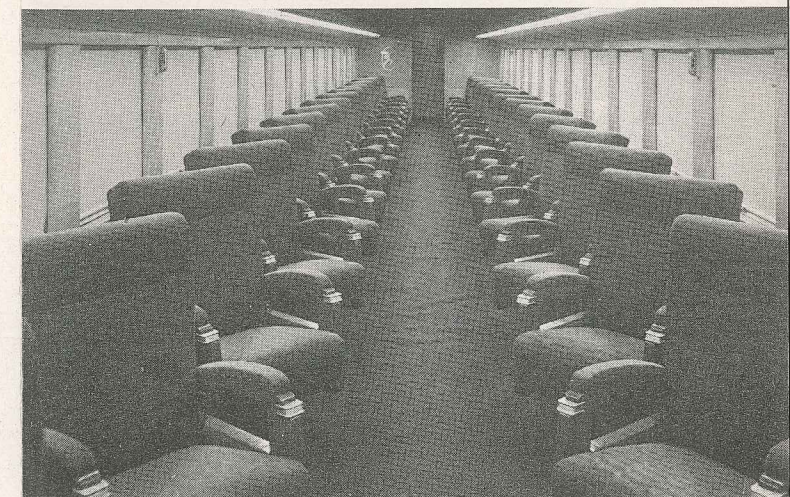


Left—The women's lounge has walls of pale green plastic decorated with colored fashion prints. There is a comfortable sofa for four and plenty of mirrors.

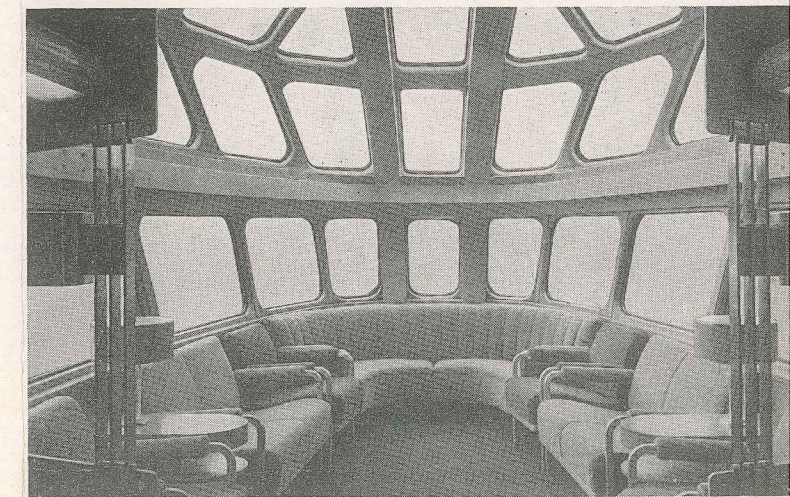
Right—The exceptionally large men's lounge is divided into separate lavatory and smoking sections, and has a 110-volt outlet for electric razors.



Fresh and charming as it is in appearance, you are most likely to remember the Hiawatha dining car for its delicious Milwaukee Road meals.



The luxurious parlor car seats tilt back for complete relaxation. A small drop-leaf table beside each chair holds magazines or writing materials.



There are comfortable chairs in the Skytop Lounge that is specially designed for thrilling scenic view of the Mississippi valley.