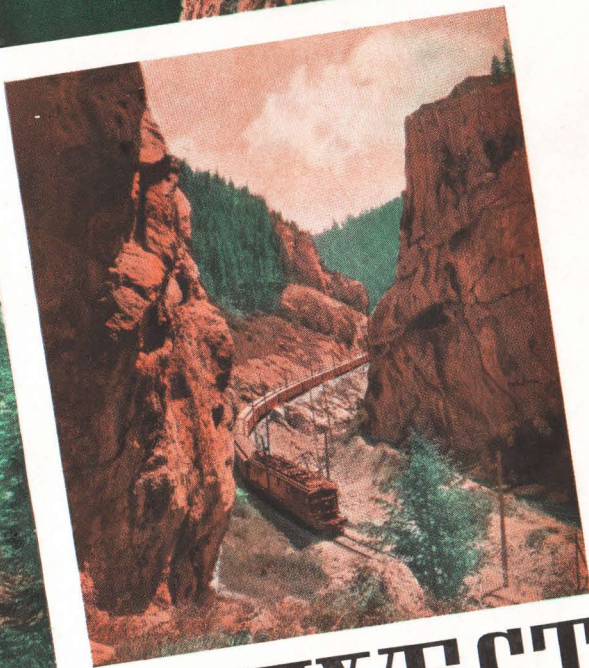
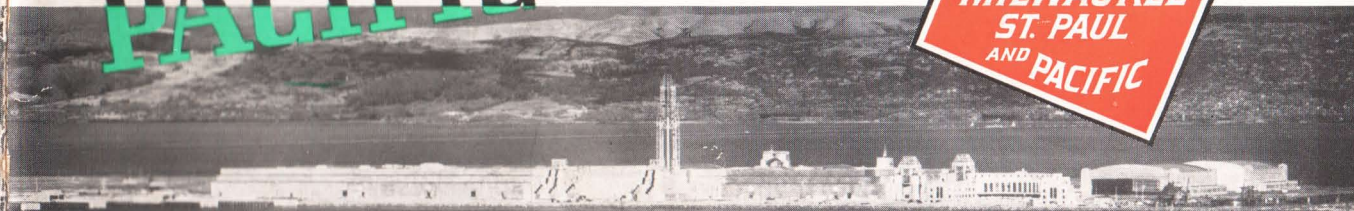


VACATION SUGGESTIONS



PACIFIC NORTHWEST



...AND THE SAN FRANCISCO FAIR



During the summer, special open observation cars enhance the enjoyment of your trip through the mountains.

High Spots of America's Greatest Vacationland



SAN FRANCISCO WORLD'S FAIR

via the glorious Pacific Northwest—Seattle, Mt. Rainier, Portland, San Francisco. Pages 16, 17, 18, 19, 22, 23, 24.



YELLOWSTONE— UTAH—COLORADO

Yellowstone via The Milwaukee Road's Gallatin Gateway, most thrilling Park entrance; Salt Lake City, Royal Gorge, Colorado Springs, Denver. Pages 18, 19, 25, 26, 27, 28, 29, 30, 31.



INLAND EMPIRE

including the lovely lake regions of Spokane and Northern Idaho, Spokane Falls, The Shadowy St. Joe River, Hayden Lake, Lake Coeur d'Alene, Grand Coulee Dam. Pages 14, 15, 38.



PUGET SOUND COUNTRY

Mt. Rainier National Park, Olympic Peninsula, Mt. Baker National Forest, The Cascade Mountains, San Juan Islands, Olympic National Park, Skagit Power Project. Pages 10, 11, 12, 13, 16, 36, 37, 38.



THE OLYMPIAN between Chicago, Milwaukee, St. Paul, Minneapolis and the Pacific Northwest makes your trip a memorable part of your vacation. Air conditioned, silent roller bearings and 656 electrified miles over four mountain ranges.



A L A S K A

The land of vast glaciers, spectacular fjords, Indians, totem poles, the "midnight sun," gold rush memories; a wonderful cruise over protected waters; calls at ports of adventure. Pages 32 and 33.



CALIFORNIA— GRAND CANYON

via Seattle, Tacoma, Portland, the Columbia River Drive, San Francisco, Los Angeles—all the scenic Pacific coast. Pages 16, 17, 18.



C A N A D A

via Seattle, Mt. Rainier National Park, and Puget Sound; Victoria—"a bit of Old England," Vancouver, B. C., The Canadian Rockies, Lake Louise, Banff. Pages 10, 11.



DUDE RANCHES— SPORTSMAN'S PARADISE

Montana, Idaho, Washington, The Olympic Peninsula, "Ranching," Fishing, Hunting, Exploring. Pages 25, 34, 35, 36, 37.



How best to plan your vacation trip... and get the most for your time and money

IN the succeeding pages are detailed descriptions of Vacation Trips to many sections of The Milwaukee Road's romantic Northwest and to other picturesque recreation spots in the West and Southwest and the Canadian Northwest.

These "Vacation Suggestions" are varied in character and appeal, designed to meet divergent tastes and pocketbooks, but in each instance they are planned for a maximum of pleasure and recreation. However, space permits mention only of the most outstanding attractions on these trips, which are chock full of carefully selected sight-seeing and entertainment.

The costs given are approximate. We have made up costs for three kinds of trips (1) Standard Pullman (2) Tourist Sleeping Car (3) Coach. With improved equipment, air conditioning, fast schedules and fares graduated according to the kind of accommodations you travel in, a new era of travel by train is opening. This era is in keeping with the new desire for recreation through travel at sensible prices, suited to the purse of the individual. Nowadays you don't have to go de luxe—in special train, private car or yacht to see America. You can enjoy yourself in a coach as well as in a compartment or drawing room.

Our figures allow for all ordinary expenses and you can safely set up your vacation budget using the costs quoted. Personal or small incidental expenses will vary with the individual, but we feel that our estimate will cover those of the average person. It is possible, of course, that none of the suggestions listed herein is in accord with your ideas. To provide for such contingencies, The Milwaukee Road offers personalized Vacation Trips, fitted to the individual's wishes and to the time and money at his command. Simply tell one of the Travel Bureaus, listed on page 40, what you have in mind, the extent of your leisure and funds, and you will be given specially prepared itineraries in keeping with your thoughts and covering all necessary expenses.

To the traveler bent on pleasure, no country in the world offers such a wealth of opportunity as our own. Something of beauty, interest or glamour waits at every turn in the trail through the great American scene.

Whether you choose from these "Vacation Suggestions" or have an itinerary fashioned to your own plans, you can rest assured that your trip will include the greatest dollar-for-dollar value in thrills and pleasure you've ever had. The Milwaukee Road Travel Specialists know the West and can advise you how to get the most for your money. Take advantage of their skill and experience and let them be your travel counsellors.

If you plan to visit the Golden Gate International Exposition at San Francisco, The Milwaukee Road offers a most complete arrangement for your hotel reservation, sightseeing, Fair admission tickets, etc., for two to six days stopovers. Attractive descriptive folder may be secured at any Milwaukee Road Ticket Office.

The Famous OLYMPIAN

One of a famous fleet of Milwaukee Road trains, the silent roller bearing Olympian represents the highest development of modern rail travel. Rolling swiftly and smoothly on its boulevard of steel, it is the counterpart, on land, of the mighty liners that bridge the Atlantic and Pacific Oceans. The Olympian caters as completely to your comfort, is as luxuriously appointed and offers its traditional hospitality. You may even secure three kinds of tickets (Standard, Tourist Sleeping Car or Coach) so that your trip accommodations may be in keeping with your taste and purse.

The semi-enclosed sections in standard sleeping cars give rest and privacy by day.



• EVERY CAR AIR CONDITIONED

Every car in The Olympian is air conditioned and automatically ventilated by the most modern methods. No matter how hot it may be in the daytime, or how chilly the mountain nights, you will travel in complete comfort in clean, draught-free air that is regulated exactly to the temperature and humidity you prefer. Thus, regardless of the weather outdoors, you will always be comfortable on The Olympian and your trip through the Northwest Wonderland will be one of the most restful and enjoyable parts of your vacation.

Ample opportunity for reading, writing or quiet relaxation is provided in the handsomely equipped observation car. Tea is served here every afternoon.





You'll welcome the notes of the chimes that call you to the dining car on The Olympian.

● COMPLETELY APPOINTED

From coil spring mattresses to barber shop and valet service, nothing has been overlooked that could contribute to the enjoyment of your trip aboard The Olympian. You will find the standard sleeping cars with berths, bedrooms, compartments and drawing-rooms, observation

and club cars all luxuriously appointed and tastefully decorated throughout. In the observation car is a library of books and current magazines; daily market report and radio. An open observation car, available to all sleeping car passengers, is carried through scenic mountain sections. Milwaukee Road meals, by the way, are justly famous among discriminating travelers, further reference to them may be found in succeeding pages. You will find them not only delightfully prepared and served, but very moderate in price.

The club section of the observation car where a touch of the bell brings prompt, smiling service.



Special features of the accommodations available to standard sleeping car passengers on The Olympian are ample lounge and smoking facilities for both men and women, shower baths, valet service, library, soda fountain, buffet service and four o'clock tea each afternoon in the observation car.

New Type Tourist Sleeping Cars



Snug comfort in roomy, individually lighted berths; fresh, snowy linen every day; aisle illumination; sleep as soundly as in your own bed.

floor lights illuminate the aisles. The commodious men's and women's dressing rooms and lounges afford ample toilet facilities as well as a place to loaf and smoke.

Snow white sheets and pillow cases are provided fresh and clean each night while a supply of clean linen towels is always on hand in the wash-rooms. There is porter service at all times.

Tourist car passengers are cordially invited to use the diner on The Olympian. Excellent meals are provided at unusually modest prices—breakfasts, luncheons and dinners from 50c up. The "Hiawatha" luncheon at noon and the "Chef's Selection Plate" at night are culinary gems for only 50c. There is also a convenient off-the-tray service for those who wish to dine in their seats which provides sandwiches at 10c, pie 10c, milk 10c, and coffee 5c.

In effect, tourist sleeping cars enable the passenger who is interested in economy to enjoy much of the comfort and privacy of Pullman travel at a much lower cost.

Here is the modern "cabin class" of rail travel. These comfortable sleeping cars make your transcontinental journey a restful, delightful interlude . . . and save approximately one-half the cost of standard sleeping car accommodations.

On The Olympian they are modern in every respect, air conditioned, well lighted, attractively decorated and with carpeted aisles. You will find the deep, plush-upholstered seats exceptionally comfortable. In addition to general illumination there are individually controlled lights in the roomy upper and lower berths while concealed

Commodious women's dressing room and lounge.



There's plenty of space in the men's smoking room.



Brand New Luxury Lounge Coaches



You will find extreme comfort in these modern coaches—well upholstered, adjustable seats; diffused lighting and plenty of room for luggage. At left: Convenience as well as comfort is provided in men's room—seats for ten.

Streamlined outside and luxury-lined inside, these new type cars provide a degree of spaciousness, comfort and beauty never before enjoyed by coach passengers. They offer one-third more room per passenger; club-like men's smoking room and women's lounge; overstuffed, adjustable reclining seats, the backs individually lowered with hand levers; diffused lighting, and silence that results from the use of roller bearings, insulated walls and rubber mounted trucks. These new coaches are attractively decorated and like all other cars in The Olympian they are air conditioned. There is an electric water cooler, porter service, sanitary towels, and hot and cold water. Coach passengers may also avail themselves of the facilities of the dining car or the off-the-tray service described on the preceding page.

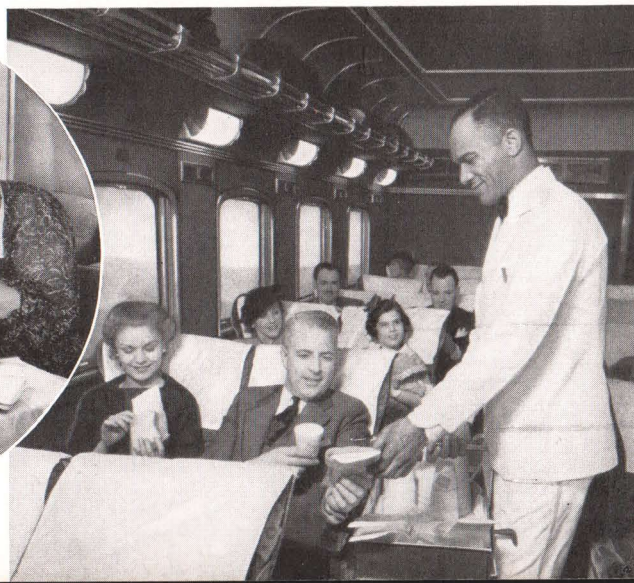


Above: The spacious women's lounge has a vanity and mirror as well as the porcelain lavatory and seats for five.

In circle: Coach passengers are invited to use the dining car. Meals from 50c up.



At right: Off-the-tray service at your seat in coaches and tourist sleeping cars.



The Trail of The Olympian



Over the Continental Divide with electric power. Substations reduce the voltage from 100,000 to 3,000 and change it from A.C. to D.C. before sending it out over the trolleys.

Switchbacks over the Bitter Roots are a remarkable engineering achievement. The higher track level is visible in the distance.



● THE ROUTE INCOMPARABLE

There is infinite variety in the beauty of country traversed by **The Olympian**.

From Chicago and Milwaukee, the trail during the night swings north and westward to the broad valley of the Mississippi which it follows to the twin metropolis, St. Paul and Minneapolis.

Westward through the Great Plains Country of Minnesota and the Dakotas, the trail of **The Olympian** follows the route of Lewis and Clark . . . touches sections steeped in Indian lore . . . crosses the Missouri at Mobridge, South Dakota and penetrates at last to the mountain country of Montana.

From Harlowton on, the scenery becomes more rugged until Montana Canyon in the Big Belt mountains unfolds its magnificent panorama—strata upon strata of rock sculptured into grotesque shapes. Your train swings smoothly onward over the Continental Divide of the Rockies; climbs in a series of switchbacks, a marvel of engineering, up and then down the Bitter Roots; and follows the valley of the shadowy St. Joe River to Spokane.

Moving onward, **The Olympian** descends into the beautiful Kittitas valley within sight of Mt. Rainier. Soon begins the climb over the last—and perhaps the loveliest—of the ranges that bar the way to the Pacific Coast. Through Snoqualmie Tunnel and you emerge on the western side of the verdant Cascades and descend to Seattle and Tacoma.

Swiftly, smoothly and comfortably you have crossed the continent; the most important mountain ranges and picturesque rivers of the West, including the Mississippi, Missouri, Jefferson, Hell Gate, St. Joe, Spokane and Columbia.

You have seen forested mountains and bare, craggy wastes, geological phenomena, immense tracts of virgin timber, historic "bad lands," wealthy mining country, vast cattle ranches, farm lands and mile-high orchards. This is the way of **The Olympian**—the route incomparable—**Electrified Over the Mountains to the Sea.**



AMERICA'S LONGEST ELECTRIFIED RAILROAD

From Harlowton, Montana, over the Big Belts, Rockies and Bitter Roots to Avery, Idaho, and again from Othello, Washington, over the Saddle and Cascade mountains to Seattle-Tacoma, The Olympian is electrified for 656 miles. Nine times as much electrified mileage as all other transcontinental lines combined!

This great zone of electrification represents an engineering achievement that stands alone in the annals of railroading. Deep in the mountain fastnesses, many power stations harness the turbulent energy of rushing streams and convert it into electric power.

In the 440-mile section from Harlowton to Avery, The Olympian is drawn by Quill type locomotives as illustrated on the front cover, while in the 216-mile western section, the locomotives are of the Bi-Polar gearless type. On the down grades, these motors reverse their function and utilize the momentum of the heavy trains to re-generate electric power. In this way, about twelve per cent of the total power consumed is recovered.

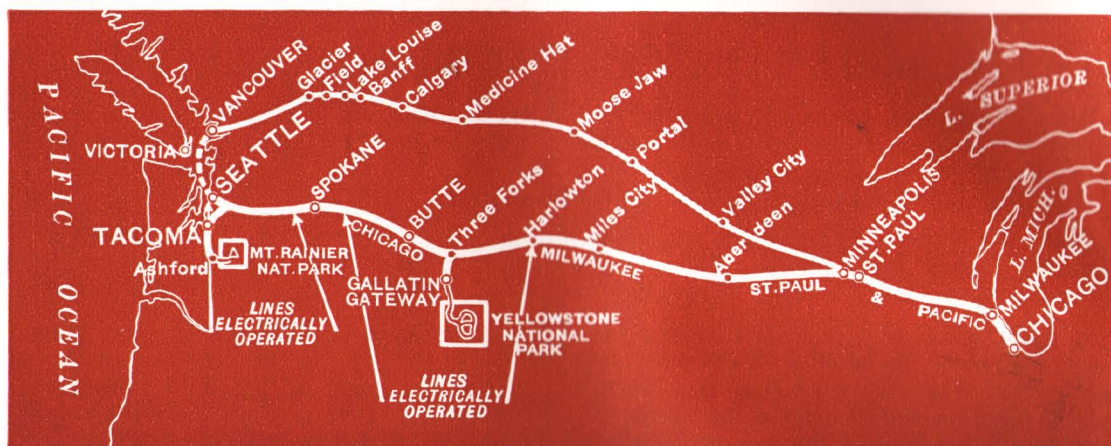
What does it all mean to the passenger? Simply this: that the electrified Olympian moves with almost unbelievable smoothness. There is a complete absence of jolting, jars, shock and side sway both in stopping and starting; no smoke, cinders or fumes. With the power and speed of an eagle the great train soars up and over the mountains.

Bi-Polar Gearless Type Locomotives speed The Olympian smoothly over the Cascade Mountains.



Insert: Open observation cars. No smoke, soot or cinders, no acrid fumes in tunnels—thanks to electrification.

Tour Number 1



FIRST DAY—

All Aboard, Northwest Wonderland

The Milwaukee Road's new Olympian awaits you every evening at Union Station, Chicago. You'll find genuine hospitality on this de luxe "Queen of the Rails." Air conditioning in every car and smooth, silent roller bearings assure you a pleasant, restful journey. Nothing has been overlooked to give your vacation a happy beginning.

SECOND DAY—Westward Ho!

Early risers may enjoy, between La Crosse and St. Paul, one hundred and forty miles of picturesque river scenery as The Olympian skirts the wide upper reaches of the Mississippi. Just after breakfast a short stop is made at St. Paul, the marble capitol building, that wonderful piece of architecture, being visible, and then your train crosses the Mississippi again on an immense trestle and brings you to Minneapolis. Leaving Minneapolis, you are on your westward way, over the prairies of Minnesota and Dakota, across the Missouri River and past picturesque Indian Reservations through a section known as the Great Plains Country. It is early evening when you cross the Missouri within sight of Ashley Island, where the Lewis and Clark expedition camped on October 8, 1804, among the Arickaree Indians. Plenty of restful enjoyment on board, and you don't care whether the winds from the Dakota "Bad Lands" blow hot or cold—thanks to air conditioning.

THIRD DAY—Electrified Travel

Early today, at Harlowton, Mont., a giant electric locomotive takes charge of your train, and presently you cross the rugged Big Belt mountains. An outstanding piece of railroad engineering enables you to enjoy the charming ride that follows through the castellated corridors of magnificent Montana Canyon to the historic Three Forks of the Missouri. It is at the town of Three Forks that passengers bound for Yellowstone National Park leave the main line and travel southward to Gallatin Gateway, The Milwaukee Road's scenic entrance to the Park. This side trip is described on pages 30 and 31. Continuing westward, powered by energy from tumbling snow-fed streams, you follow the Canyon of the Jefferson River, cross the Continental Divide and enjoy a day of sootless, cinderless, *electrified* travel amid magnificent mountain scenes of the Rockies. A short stop is made at Butte, world-famous mining city. As the afternoon draws to a close the climax of the second day's trip is reached with the

crossing of the Bitter Root Mountains. Here spectacular scenic effects and the engineering feats accomplished in conquering this magnificent section vie for your attention. A stop at Spokane enables the passenger to take a short stroll before retiring.

FOURTH DAY—Vacation Headquarters

After registering at the hotel, a day of interesting sight-seeing by land or sea awaits you. In Seattle, there's a visit to the colorful markets, to the waterfront flying the flags of all nations, and a tour of the city—parks, boulevards, Lakes Washington and Union, the wonderful ship canal, perhaps to the Navy Yard.

FIFTH DAY—Mt. Rainier National Park

Leave Seattle by motor coach following National Park Highway through vast forests and flowering meadows, past Longmire Springs and Nisqually Glacier to Paradise Valley. Horseback trips along skyline trails; hiking to snowfields and glaciers on the ice-sheathed monarch of mountains occupy the afternoon. In the evening there is always some activity that sends you to bed, tired after a thrill-filled day, but happy.

SIXTH DAY—Good bye, Rainier!

The morning passes quickly enjoying Winter sports. Alpine costumes, equipment and guides are procurable for a small sum. Prices generally are reasonable and meals may be had in the restaurant or the cafeteria. You leave Paradise Valley in midafternoon, arriving Seattle for dinner and night at your hotel.

SEVENTH DAY—Hello, Canada!

Leave Seattle in the morning for a cruise up Puget Sound, among the wooded San Juan Islands to Victoria, B. C., on Vancouver Island. Your steamer is one of the Canadian Pacific Princess liners—a trim, smaller sized edition of one of that company's great Trans-Pacific steamers. Shortly after noon you dock at Victoria—"a bit of old England" that is sometimes said to be more British than the British Isles themselves. The afternoon and evening may be spent in city sight-seeing. There is the Parliament House, the huge dry docks; or trips to nearby points such as Butchart's Gardens or the Observatory. For dinner a mutton chop or that delightful, economical and strictly English dish, "fish and chips." In the sea air of this maritime city you'll sleep the sleep of the just.

EIGHTH DAY—Cosmopolitan Vancouver

Again shortly after lunch, you board a yacht-like steamer for Vancouver enjoying the relaxation of your



deck chairs, playing shuffle board or just enjoying the beauty of the Georgian Straits. Arrive at Vancouver, the leading city of Western Canada, in early evening and have a chance to see something of this cosmopolitan city before bedtime.

NINTH DAY—Turning Eastward

After breakfast you say good bye to Vancouver and are bound for the picturesque Rockies and two full days chock full of interest and delight at Lake Louise and Banff.

TENTH DAY—Lovely Lake Louise

A memorable trip through the awe-inspiring scenery. Brief stop at Field, under gigantic snow-peaks. Arriving at Lake Louise for luncheon, you have a full afternoon to enjoy the charm and beauty of this most beautiful of mountain lakes. Hike along its wooded shores; row on its crystal clear, sky blue waters to the foot of Victoria Glacier; ride or motor to nearby scenic vantage points; swim in the pool bordering the Lake. Evening and over night at charming Chateau Lake Louise or rustic Deer Lodge.

ELEVENTH DAY—Beautiful Banff

After breakfast at Lake Louise you leave by motor or train for Banff Hot Springs and a round of sight-seeing. Banff is gay of a summer evening and you'll find plenty to do not far from your hotel.

TWELFTH DAY—Au Revoir, Rockies

A morning full of swimming, boating, golf, tennis, sight-seeing on foot, or horseback or by motor—take your choice. In Banff as elsewhere on this tour you may suit your fancy and your pocketbook. In the evening you board your train, homeward bound.

THIRTEENTH DAY—Through Canada

Down from the Rockies and over the fertile prairies of Alberta, Saskatchewan and Manitoba. You re-enter the United States through Portal, N. D.

FOURTEENTH DAY—Home Stretch

At the Twin Cities, you transfer to The Milwaukee Road's famous Hiawatha for a charming day trip through the scenic Upper Mississippi Valley, Wisconsin's picturesque lake lands, past the beautiful Dells of the Wisconsin River. Reach Chicago, Union Station, early the same afternoon, concluding a trip that will be an outstanding memory.



Guides on Mt. Rainier with a giant Swiss Alpine horn.

TRIP NUMBER 1

WORLD'S LONGEST CONTINUOUS ELECTRIFIED RIDE OVER FOUR GREAT MOUNTAIN RANGES—PACIFIC NORTH COAST—MT. RAINIER NATIONAL PARK—PUGET SOUND—BRITISH COLUMBIA—THE CANADIAN ROCKIES—LAKE LOUISE—BANFF.

*ESTIMATED COSTS

From Chicago

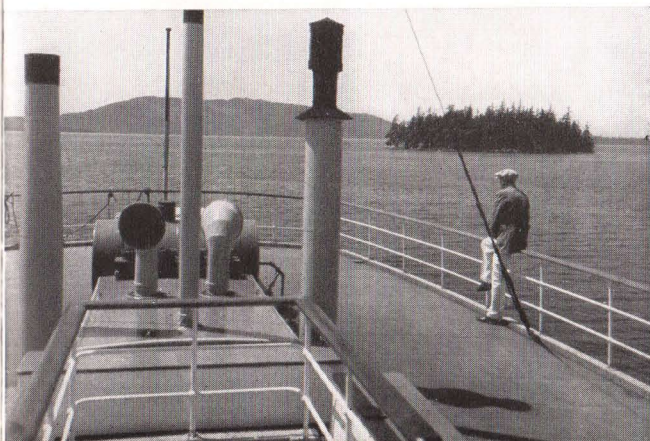
	Standard Sleeper	Tourist Sleeper	Coach
Round trip rail fare	\$ 90.30	\$ 74.00	\$ 65.00
Lower Berth	31.55	16.35
Meals, transfers, hotels, sight-seeing	104.50	68.75	57.50
	\$226.35	\$159.10	\$122.50

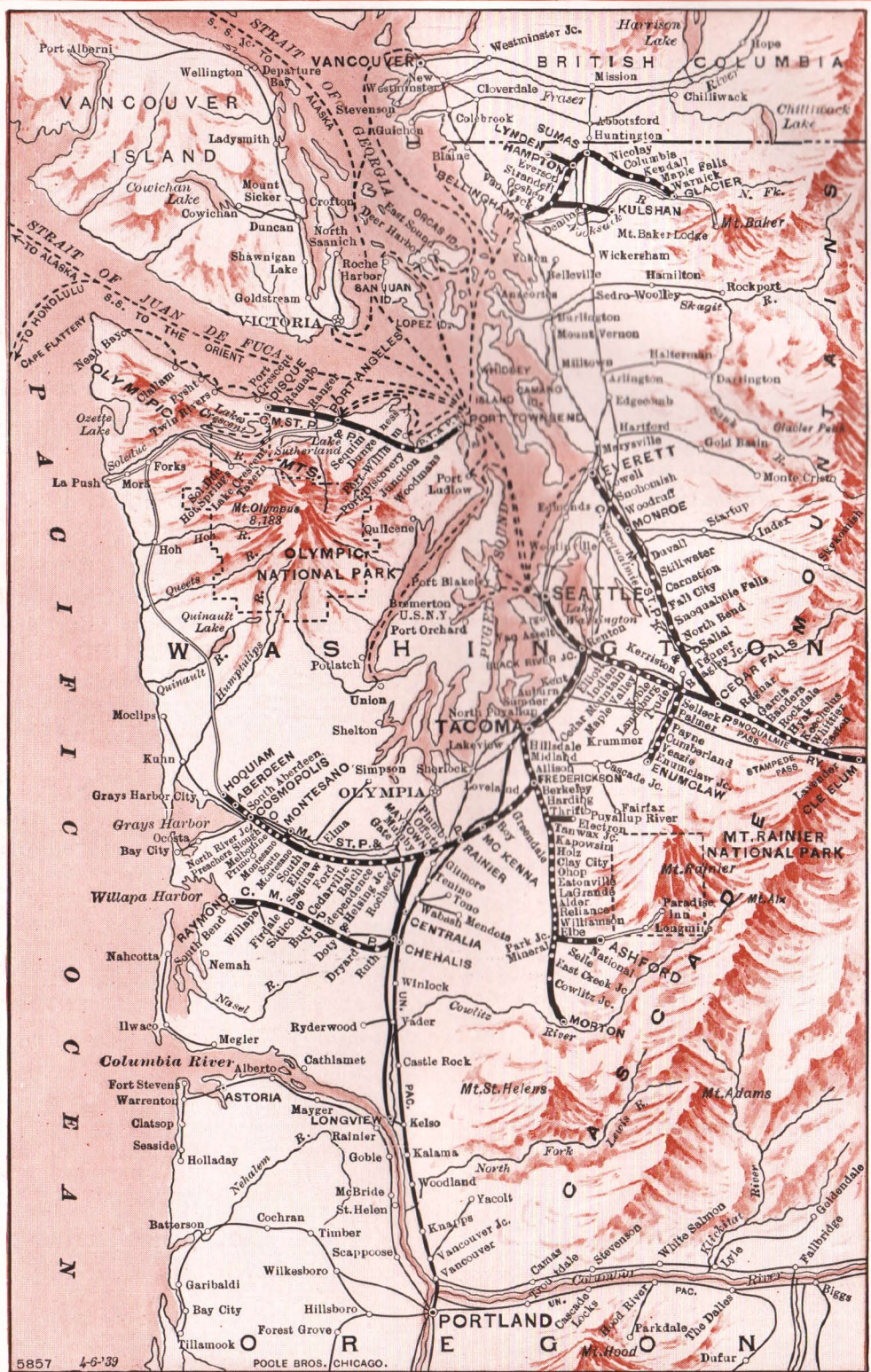
Covering nearly five thousand miles in two countries; traveling by railroad, motor and steamer, this trip is unequalled for scenic grandeur on the North American Continent. Seven nights at hotels or lodges; six nights on board trains. The standard and tourist prices quoted above will be decreased per passenger in the event two occupy a lower berth or one occupies an upper. Hotel rates are based on one to a room so that in the case of standard, tourist or coach passengers the price will be slightly less if there are two to a room.

*COSTS FROM OTHER CITIES—The costs of this trip from points east and south of Chicago increase as rail fares, sleeping car rates and incidental expenses become higher; from points west of Chicago rail fares, sleeping car rates and incidentals decrease.

Our representatives can tell you what has been allowed for your meals, what hotels you can stop at, what sight-seeing may be included to keep within your vacation budget and approximately what it will cost and how long it will take from your home town.

The wooded San Juan Islands dot Puget Sound





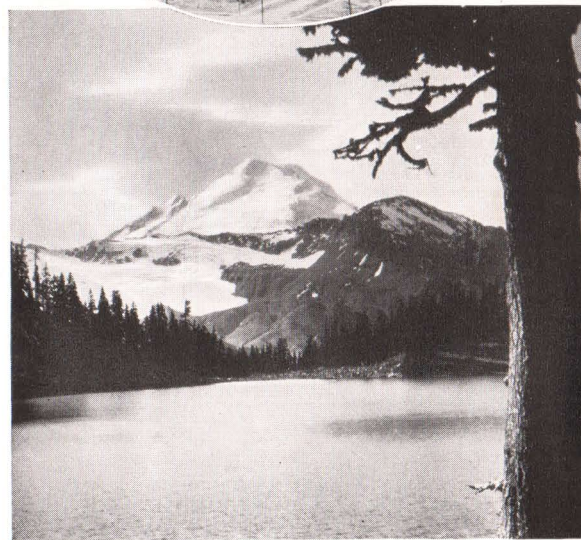
The Puget Sound Country

This is the "charmed land"—the evergreen playground! Centering around the modern cities of Seattle and Tacoma, the Puget Sound Country is an inexhaustible storeroom of varied vacation pleasures. The Sound itself is a perfect setting for delightful cruises that may continue interminably—among the picturesque San Juan Islands and on through the Straits of Juan de Fuca to the Orient and the South Seas . . . northward to Victoria and Vancouver . . . up through the "inside passage" past rugged coasts and fjords to Alaska, land of the midnight sun, of Indians and totem poles, of "gold rush" memories.

Across Puget Sound, but a few hours from Seattle by boat, is the wilderness paradise of the Olympic Peninsula, a vast area of virgin timber; of sparkling lakes nestling high in the snow-peaked Olympics; of crystal streams rushing to the Pacific. Comfortable resorts, exploring by pack train, shooting the rapids in dugout canoes, swimming on Pacific Ocean beaches, trout fishing and big game hunting are at their best in this "last frontier" of the old West.

Southeast of Seattle and east of Tacoma, within easy reach in comfortable motor coaches, is Mt. Rainier National Park—America's Switzerland. You can rent "Alpine costumes" at a nominal price; go tobogganing or skiing in midsummer on great snow fields; hike with Park guides on living glaciers; wander knee-deep in the flower-carpeted Alpine meadows of Paradise Valley, or make the strenuous ascent to Columbia Crest nearly three miles up.

A few hours north of Seattle, en route to Vancouver by rail, is Bellingham. From here, a thrilling motor highway leads to snow-clad Mt. Baker in the center of the 75,000 acre Mt. Baker Recreational Area. This region includes Mt. Shuksan and the lake-dotted Heather



Top: Mt. Rainier as seen from Seattle.
Below: Mt. Baker, the "Great White Watcher."

Pacific Ocean Strands, Olympic Peninsula



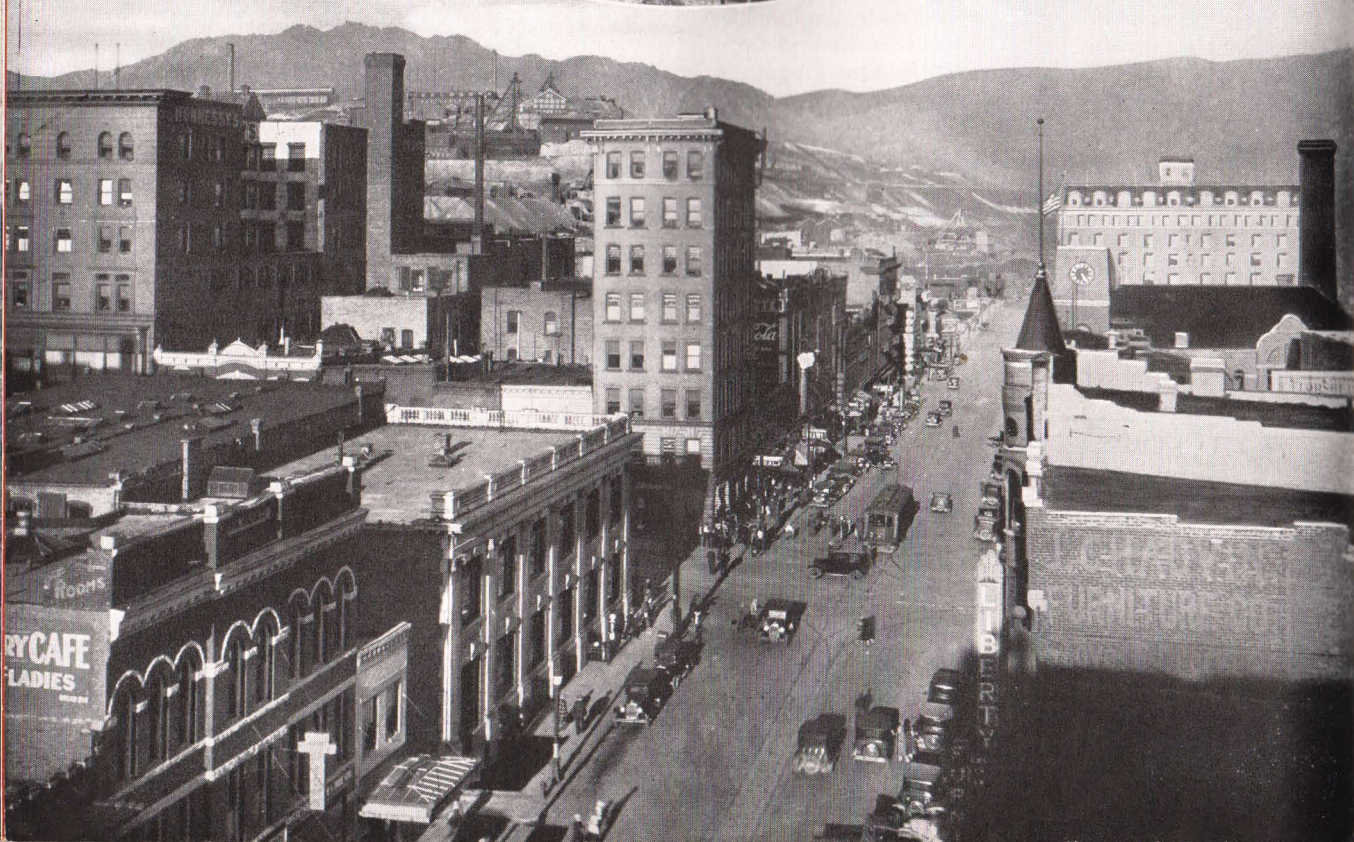
Meadows. Exploring primeval forests or boating, bathing and fishing fill happy days.

Seattle itself offers days of amusement and adventure. You may visit the waterfront on Elliott Bay where lie ships of the seven seas . . . the business and shopping districts . . . gay restaurants and modern theatres . . . Chinatown . . . the residential sections . . . beautiful freshwater lakes connected with Puget Sound by the "ship canal" . . . and the nearby Cascade Mountain resorts. Short steamer and ferry trips take you to the U. S. Navy Yard at Bremerton, to Port Townsend, Everett and other cities on Puget Sound.



*Right: Spokane,
the capital of the
Inland Empire.*

*Below: Down-
town Butte look-
ing toward the
"diggings."*



Spokane and Butte

Spokane itself is a beautiful modern city with the **Spokane River** flowing through its heart. It has nearly two thousand acres devoted to natural parks and children's playgrounds all connected by a splendid system of boulevards.

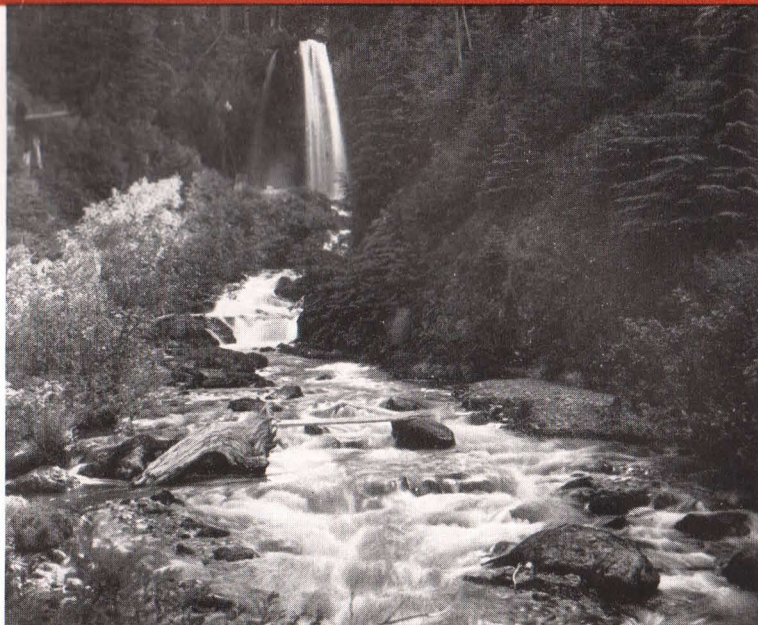
Immediately surrounding Spokane is a vast recreational region offering the vacationist every opportunity for enjoyment. There is Mount Spokane with an auto highway leading to its summit from which one may view a magnificent panorama including parts of Washington, Idaho and British Columbia.

Within a radius of one hundred miles are the shadowy St. Joe River, Lake Coeur d'Alene, Grand Coulee Dam, Hayden Lake, Lake Chatcolet, Newman Lake, Lake Pend Oreille, Pend Oreille River, Box Canyon, Priest and Twin Lakes, Spirit Lake and Liberty Lake offering excellent resort accommodations for visitors. Those who wish to rough it can easily hike or make pack trips to secluded streams and lakes buried in the heart of a mountain wilderness.

BUTTE

"The Richest Hill in the World"

Gold has always been the celebrated and storied object of mining operations, yet Butte, founded upon the gold dust and nuggets panned from the bed of Silver Bow Creek, never achieved its romantic position as

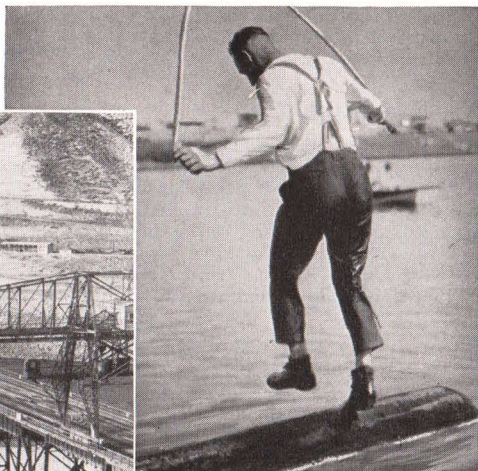


In the heart of a mountain wilderness along the Olympian Trail.

"the nation's mining capital" until its huge deposits of another metal were unearthed. Though gold and silver contributed their share, unique, colorful and democratic Butte owes its position primarily to copper.

From 2700 miles of underground workings—a whole city under a city—Butte produces one-third of the copper mined in the United States; has produced as much as one-fifth of the total amount mined in the entire world.

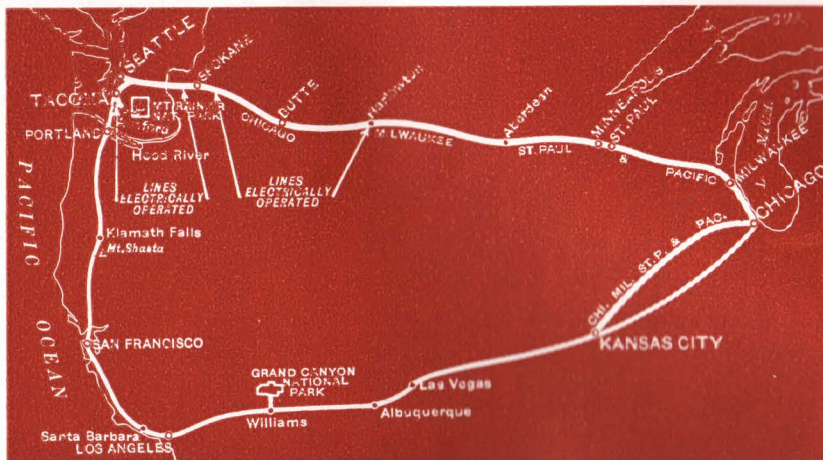
From a placer mining camp in 1864, Butte has become a city of forty thousand, the home of the famous School of Mines of Montana University, and with a record of wealth production unequaled in the world.



A good trick if you can do it. Lumberman rolling a log and the water's cold

The Grand Coulee Dam across the Columbia River under construction

Trip Number 2



FIRST, SECOND, THIRD, FOURTH AND FIFTH DAYS ARE DESCRIBED UNDER TRIP NUMBER 1, PAGE 10.

SIXTH DAY—Seeing Tacoma

After breakfast you leave Mt. Rainier National Park for Tacoma, arriving there in time for lunch. The afternoon may be spent in sight-seeing. Tacoma is located on Commencement Bay, a large inlet of Puget Sound and the waterfront and deep water harbor of this World Port contain much of interest. Tacoma is a city of attractive residences, modern schools and beautiful parks. Because Tacoma leads in the manufacture of forest products, it is known as the "Lumber Capital of America." You leave Tacoma in the early evening and arrive Portland in time to get settled at your hotel and enjoy a full night's sleep.

SEVENTH DAY—Columbia River

An early breakfast, then a day of outstanding adventure seeing this beautiful city from which three snow-capped peaks are visible, motoring along the world-renowned Columbia River Highway. Towering cliffs, splendid waterfalls—Multnomah, Latourell, Horsetail—salmon fishing, Indians, beautiful Mt. Hood. You will agree that this drive is incomparable. Depart same evening for San Francisco.

EIGHTH DAY—Past Mt. Shasta

A restful day of superbly scenic travel along the base of great mountains, through rugged canyons. Grand Mt. Shasta, with its snowy head in the clouds, is in view many hours and the train passes through Shasta Springs, noted for its mineral water. Later in the day your route is through the Sacramento Valley to Martinez and across the Carquinez Straits. You arrive San Francisco early in evening. Night at hotel.

NINTH, TENTH AND ELEVENTH DAYS—The World's Fair City

San Francisco is a city with a personality, a place of unending interest. And this year the great Golden Gate International Exposition on Treasure Island will add its countless attractions to the charm and beauty of this famous city. Three full days of sight-seeing—you will enjoy every minute.

TWELFTH DAY—Down the Golden Coast

Leave San Francisco in the morning. Four hundred and seventy miles of interesting sights. Charming suburban cities, fabulously fertile valleys, orchards, Summerland where you see oil being pumped from beneath the ocean bed, Missions, Monterey Bay, the Coast Range, enchanting Santa Barbara—along the Pacific shore to Los Angeles. Night at hotel.

THIRTEENTH DAY—Magic Los Angeles

After breakfast, a motor coach tour over Los Angeles boulevards through palatial residence districts to Hollywood, capital of "moviedom," Beverly Hills, home of noted film stars, past great oil fields to the gay beach cities—Santa Monica and Venice. In the evening, a visit to one of the magnificent photoplay theatres.

FOURTEENTH DAY—The Orange Groves

Forenoon sight-seeing in Los Angeles. Leave in early afternoon passing through orange groves, then the Sierra Madre Mountains on your way to the earth's grandest spectacle.

FIFTEENTH DAY—Grand Canyon

Breakfast, then a day all too short to comprehend the overwhelming grandeur, the bewildering beauty and the gorgeous colors of the most sublime sight on the globe. A motor tour may be taken to outstanding viewpoints on Grand Canyon's rim. You may have circled the world itself in search of something out of the ordinary. Here it is in your own land. To the scientist, the Canyon offers a bird's-eye view of the earth's strata and a wealth of specimens; to the naturalist, the plant life of half a continent within the space of half a dozen miles; to the artist, the multi-colored lines of its million acres; to the sensation seeker, the thrills of zig-zagging trails; to the average man or woman on vacation bent, an event never to be eclipsed.

SIXTEENTH DAY—New Mexico

Colorful mesas, lofty mountains and Indian communities diversify this day of restful travel.



SEVENTEENTH DAY—Kansas City

Following the Santa Fe trail across Kansas to Kansas City, Mo. Arrive Chicago in evening.

TRIP NUMBER 2

AMERICA'S LONGEST ELECTRIFIED RAILROAD—FOUR GREAT MOUNTAIN RANGES—PUGET SOUND—MT. RAINIER NATIONAL PARK—COLUMBIA RIVER DRIVE—CALIFORNIA—SAN FRANCISCO WORLD'S FAIR—THE GRAND CANYON

*ESTIMATED COSTS

From Chicago

	Standard Sleeper	Tourist Sleeper	Coach
Round trip rail fare	\$97.30	\$79.00	\$68.00
Lower berth	44.45	22.35
Meals, transfers, hotels, sight-seeing	110.15	82.90	69.35
	\$251.90	\$184.25	\$137.35

On this trip you see the Pacific Coast and the San Francisco World's Fair. You travel nearly six thousand miles in sixteen states and, in addition to the scenic high spots and National Parks, visit Seattle, Tacoma, Portland, San Francisco and Los Angeles.

Nine nights in hotels or lodges and seven on board trains.

The standard and tourist prices quoted above will be decreased per passenger in the event two occupy a lower berth or one occupies an upper. Hotel rates are based on one to a room so that in the case of standard, tourist or coach passengers the price will be slightly less if there are two to a room.

The Columbia River Highway near Portland. A niche cut in the side of towering palisades.



Top: The Pacific Ocean with its golden strand, the Highway and the Mountains at Santa Monica, California.

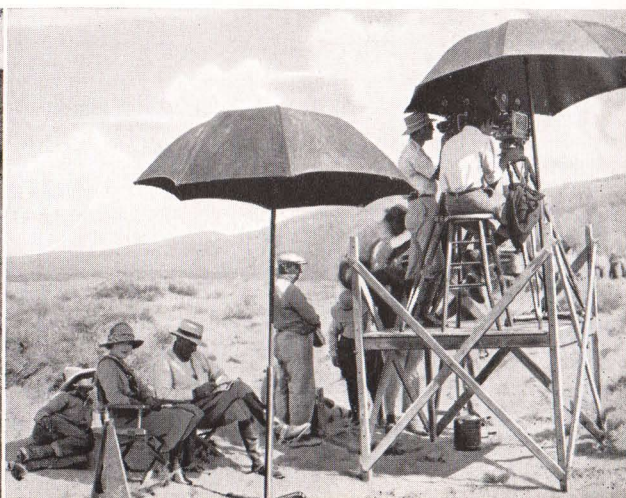


Below: Trail Riders in the Grand Canyon enjoying a scenic spectacle that no artist has ever been able to paint.

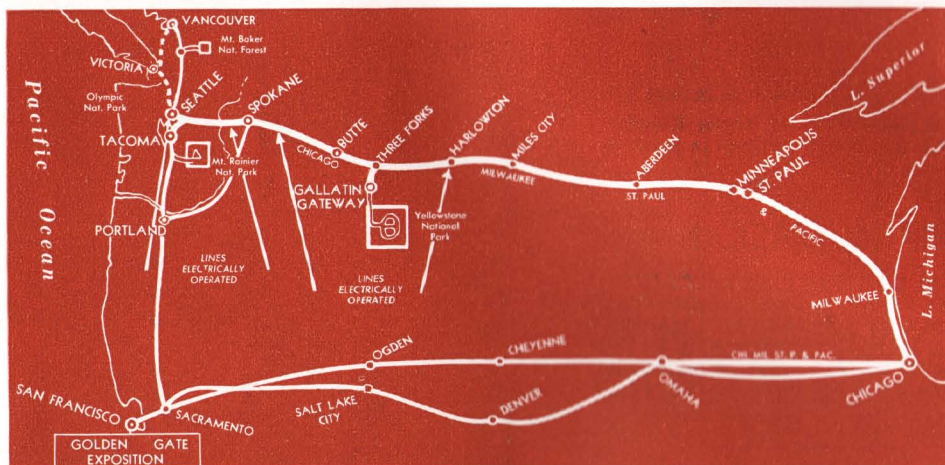
***COSTS FROM OTHER CITIES**—The costs of this trip from points east and south of Chicago increase as rail fares, sleeping car rates and incidental expenses become higher; from points west of Chicago rail fares, sleeping car rates and incidentals decrease.

Our representatives can tell what has been allowed for meals, what hotels you may stop at, what sight-seeing may be included to keep within your budget and approximately what it will cost and how long it will take from your home town.

On location—a movie company shoots a scene in the desert country of Southern California.



Trip Number 3



Among the High Sierras

TRIP NUMBER 3

THE FIRST ELEVEN DAYS OF THIS TRIP ARE DESCRIBED
UNDER TRIP NUMBER TWO ON PAGES 16 AND 17

ELEVENTH DAY—Goodbye San Francisco

After dinner you board the ferry from Oakland Pier. As you cross San Francisco Bay you get a magnificent view of the fairyland on Treasure Island and the great San Francisco-Oakland bridge. You have time for a little sightseeing in Oakland before you board the train for home.

TWELFTH DAY—Nevada and Utah

Depending on the route selected, early morning finds you leaving the Feather River Canyon or traveling through the glorious High Sierra country and across the California-Nevada border. The mining towns flash by the window as you speed eastward and as evening falls your train crosses the Great American Desert—or by another route “goes to sea by rail” across Great Salt Lake. If time permits, your tour should be extended to enjoy a stopover at Salt Lake City for a view of the famous Mormon Temple and Tabernacle, as well as a trip to Saltair Beach.

THIRTEENTH DAY—East of the Rockies

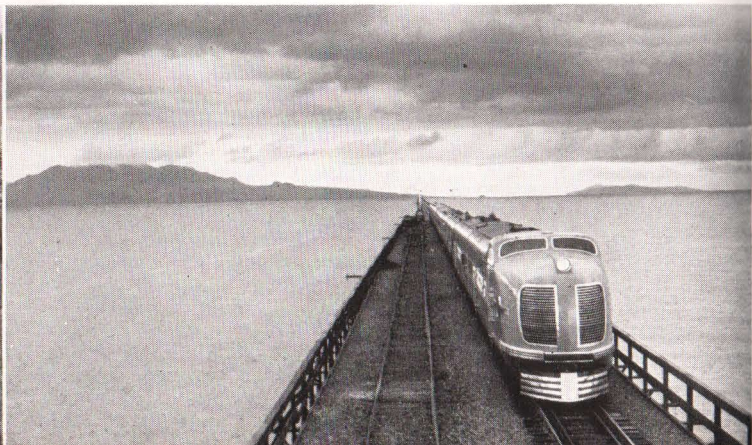
On one route through the Moffatt Tunnel under the Rockies in the morning; while via the other route you go over the Rockies in Wyoming at an altitude of 8,013 feet. A brief sightseeing tour of Denver, “the mile high city”, can be made before departure in late afternoon for the east.

FOURTEENTH DAY—Chicago

Arrive Chicago in the morning.

(Below, left) Feather River Canyon

(Below) Crossing Great Salt Lake





TRIP NUMBER 3

AMERICA'S LONGEST ELECTRIFIED RAILROAD . . .
FOUR GREAT MOUNTAIN RANGES . . . PUGET SOUND
. . . MT. RAINIER NATIONAL PARK . . . COLUMBIA
RIVER DRIVE . . . SAN FRANCISCO WORLD'S FAIR.

*ESTIMATED COSTS

From Chicago

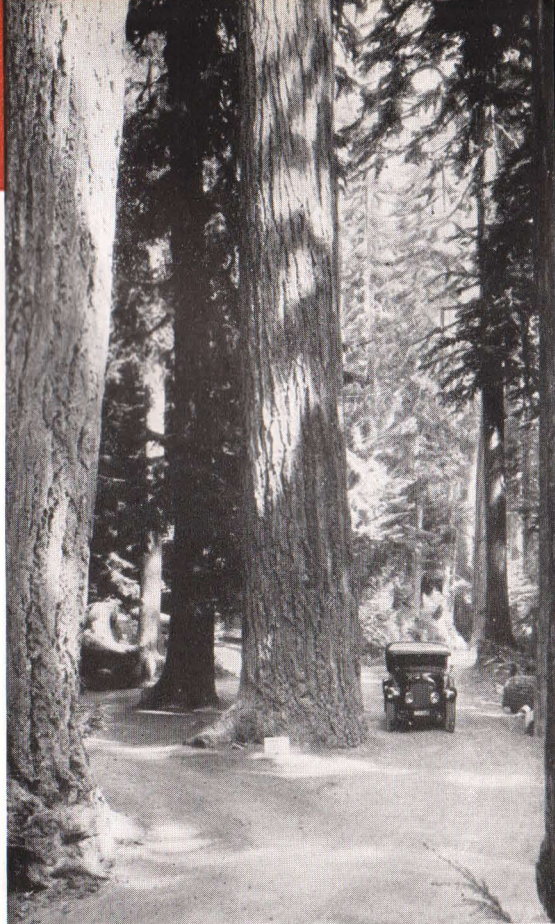
	<i>Standard Sleeper</i>	<i>Tourist Sleeper</i>	<i>Coach</i>
Round-trip rail fare	\$ 90.30	\$ 74.00	\$ 65.00
Lower berth	39.70	20.80
Meals, transfer, hotels, sight-seeing	85.15	63.65	54.15
	<u>\$215.15</u>	<u>\$158.45</u>	<u>\$119.15</u>

On the trip you see the glorious Pacific Northwest and the San Francisco World's Fair. You travel more than five thousand miles in fifteen states. Seven nights on board trains and six nights in hotels or lodges.

The standard and tourist prices quoted above will be decreased per passenger in the event two occupy a lower berth or one occupies an upper. Hotel rates are based on one to a room so that in the case of standard, tourist or coach passengers the price will be slightly less if there are two to a room.

***COSTS FROM OTHER CITIES**—The costs of this trip from points east and south of Chicago increase as rail fares, sleeping car rates and incidental expenses become higher; from points west of Chicago rail fares, sleeping car rates and incidentals decrease.

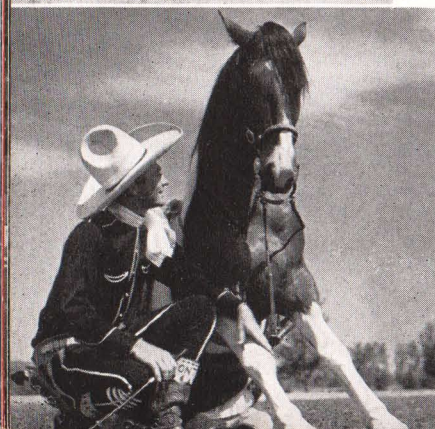
Our representatives can tell you what has been allowed for meals, what hotels you may stop at, what sight-seeing may be included to keep within your budget and approximately what it will cost and how long it will take from your home town.

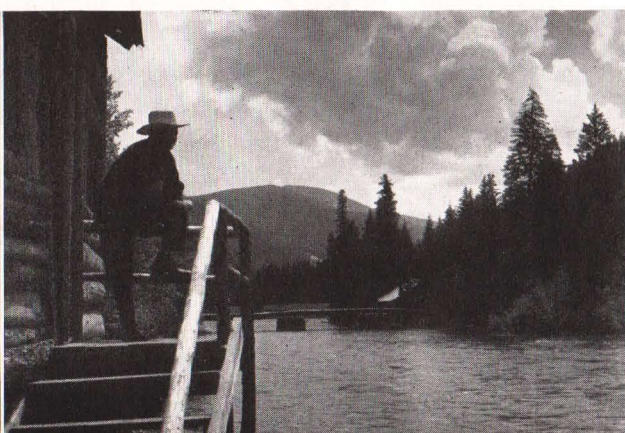


Douglas firs—some of them six hundred years old—Alaska cedars, hemlocks and other great evergreens line the highway leading to Mt. Rainier.

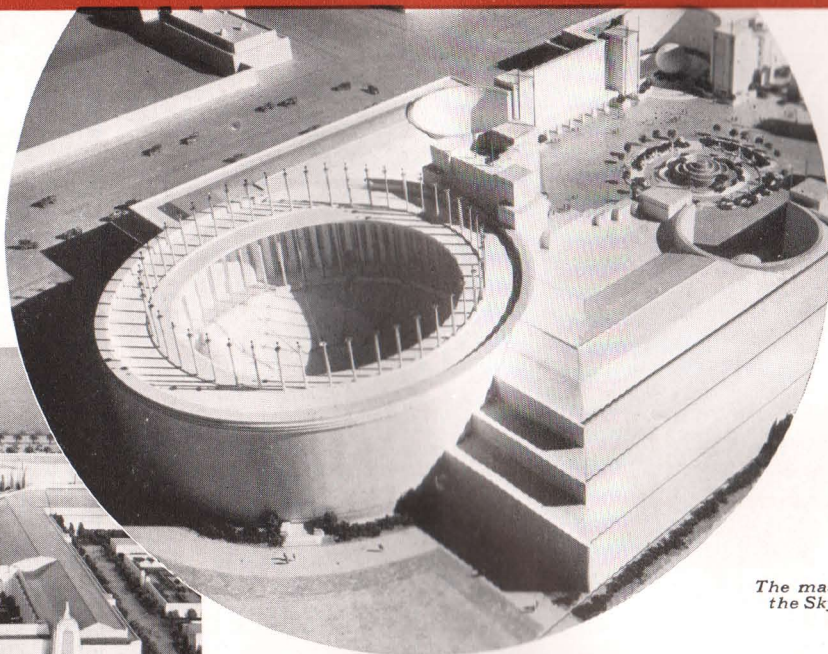
Tacoma's natural, deep-water harbor at Commencement Bay will handle ships of any draught, and makes this city an important world port.







San Francisco World's Fair 1940



The massive Theatre of the Sky and its court



The Temple of Music and Lake of All Nations

TREASURE ISLAND HOLDS THE ROMANCE OF THE WEST

This year you'll want to include San Francisco and its Golden Gate International Exposition in your vacation tour of the Pacific Northwest. You can do it at surprisingly low cost. For you can travel to Seattle-Tacoma on the OLYMPIAN, then south to San Francisco and back east via Salt Lake City and Colorado or via Los Angeles and Arizona for the same rail fare that applies for direct routes from most points in the United States and eastern Canada. Hundreds of additional miles of delightful travel without extra cost! Double your pleasure by going one route and returning another.

SEE A MAGIC WORLD

At first sight, you'll fall in love with the Pageant of the Pacific. No other Fair has had a setting of such incomparable beauty and charm. Situated in the center of San Francisco Bay, 400-acre Treasure Island connects directly with the tremendous San Francisco-Oakland Bay Bridge. Over a mile long and almost two-thirds of a mile wide, it is the largest man-made island in the world—and every foot of it is packed with beauty, entertainment and romance. Enchantingly colorful by day and by night, you'll find new beauties, new thrills every minute of your stay. You'll never see anything like it in architecture, in landscaping or in warm, vital charm. And remember—this is the paradise where all good camera fans go.



A gigantic golden Phoenix crowns the 400 foot Tower of the Sun

Readily accessible by ferry or by the Bay Bridge, Treasure Island is air conditioned by the soft breezes of the Pacific. You may be sure of enjoying comfortably cool days all through the summer. And, because the Island was designed, built, landscaped and illuminated expressly for a Fair, it is exactly right in size and in atmosphere. Spacious enough to house a world of wonders and to avoid uncomfortable crowding, it is still sufficiently compact to enable you to tour the grounds without fatigue.

Architecturally, the Fair represents a happy mingling of Occidental and Oriental design. For this is a "Pacific" Fair that is representative of the whole world surrounding the great western ocean. Here you will find the mystery and romance of Hawaii, China and Japan, of Bali, Java and the Antipodes, of Central and South America. There are spacious avenues converging in broad courts; there are shady lanes and the tinkling music of many fountains. Illuminating engineers have performed miracles. At night the buildings are literally "painted with light."

A world traveler who visited the Fair on its opening days says—"The setting, the architecture and the lighting make for the most pleasing effect it has been my pleasure to experience. No confusion, no complexities, no jarring notes. The result is a beautiful serenity that makes you glad you're alive in the world as it is today."



The Court of Reflections and Triumphal Arch

Treasurer Island and The Fair Buildings as seen from the Bay Bridge





The Court of the Hemispheres

ENTERTAINMENT AND INSTRUCTION

There is amusement for every taste on Treasure Island. You can visit the Hall of Science and see a demonstration of the great "atom smasher" developed by the California Institute of Technology . . . the miracle of "Water farming" by which fruits and vegetables are grown without soil . . . the story of the development of medical science. You will see the newest ideas in television and radio; explore the shafts and tunnels of a mine; travel to the very bottom of the sea. Priceless collections of paintings, porcelain, tapestries and statuary have been gathered from famous museums, and await your inspection as you stroll through the streets of the World.

FUN ON THE GAYWAY

No Exposition would be complete without a "Midway." And Treasure Island has one that will delight your heart. The 40-acre Fun Zone has everything from movies to Chinese opera. There are thrilling roller-coaster rides and swing bands . . . an aerial crane that affords a breath-taking view of the Island, of Bay Bridge and Golden Gate

Bridge . . . symphony concerts . . . restaurants featuring the exotic dishes of the world's far places . . . Balinese dancers and hula girls . . . intimate supper clubs and huge movie "sets" where Hollywood camera men and stars are at work.

ALL ARRANGEMENTS MADE FOR YOU

You can plan your tour via the OLYMPIAN allowing at least three days at the Golden Gate International Exposition. We can make all arrangements for your stay in San Francisco. You can pay one lump sum to include hotels, meals, sightseeing around San Francisco, admissions to the Fair, etc. Costs are moderate, and you are certain of having just the hotel accommodations you choose in advance, regardless of how crowded the city may be. It's the economical worry-free way to see the Fair. For itineraries including San Francisco, see Trips 2 and 3 in this book.

We suggest that you write for a free copy of our San Francisco World's Fair folders which give detailed information describing the buildings and exhibits of the Fair, and pictures of its many attractions.

Gallatin Gateway to Yellowstone

YOURS FOR A REAL WESTERN VACATION

Located in the heart of the Montana Rockies, hospitable Gallatin Gateway Inn is maintained by The Milwaukee Road for the pleasure and entertainment of its guests.

Whether you stay a few days, a week or longer, you will enjoy a vacation so different and exciting that you'll be talking about it for years. You'll get acquainted with real western people, see new things and experience new thrills through days of carefully planned activities that show you the best of the west at surprisingly low cost.

SEE RELICS OF VIGILANTE DAYS AT HISTORIC VIRGINIA CITY. A beautiful drive through the mountains takes you to this unique "ghost town" with its museum of frontier relics . . . its Hangman's Building and Vigilante Headquarters dating from pioneer days . . . its "Boot Hill" cemetery with the graves of notorious outlaws.

PAN GOLD AT ALDER GULCH. Go just outside of Virginia City to the scene of Montana's greatest gold strike—the gulch that yielded over a hundred million dollars in gold in a few short years. Try your own hand at panning for the flakes of yellow gold and vari-colored Montana sapphires.

VISIT NEWLY DISCOVERED MORRISON CAVE. Situated high up in the Tobacco Root mountains, this spectacular cave is rapidly winning fame for the unusual delicacy and beauty of its colorful rock formations.

SPEND A DAY ON A GREAT CATTLE RANGE. Find out how cowboys really live and what they do. See the activities of a ranch as big as a county with an annual "crop" of thousands of sturdy, white-faced steers.

VISIT MONTANA'S FAMED DUDE RANCHES. Sit on the corral fence and swap stories with the head wrangler. See the varied activities that are making dude ranching one of America's fastest-growing



Enjoy sports at Gallatin Gateway Inn

kinds of vacation. Pick out the ranch you'll want to visit next year.

TAKE A PACK TRIP INTO THE SPANISH PEAKS. Climb onto a horse of your own for a one or two day trip. Fish for rare Golden Trout in hidden lakes far above timberline. Camp under Montana stars.

FISH RACING MOUNTAIN STREAMS. There's grand trout water within walking distance of the Inn, and there's a total of more than two hundred miles within easy reach in the Gallatin valley.

ENJOY TENNIS, PUTTING, ARCHERY, QUOITS OR JUST LOAFING. There's plenty to occupy your time right around the Inn—and there are always congenial fellow guests whose company you will enjoy.

Gallatin Gateway Inn is thoroughly modern in its appointments with airy bedrooms, a spacious two-story living room, souvenir shop and a big, sunny dining room where delicious meals are tailored to suit hearty, mountain appetites. Rates are very reasonable, and can be quoted to include the cost of such side-trips as you may care to select.

If you're going to Yellowstone, by all means plan to spend a few days at Gallatin Gateway Inn.

Camp Fire Tales



Intriguing Morrison Cave





Yellowstone National Park

At historical Three Forks, Montana, confluence of the Gallatin, Jefferson and Madison rivers, the traveler to Yellowstone leaves the main electrified line of The Milwaukee Road and journeys by motor southward to mountain-cradled Gallatin Gateway Inn, on the threshold of Yellowstone Park. Here is the Recreation Headquarters of the Rocky Mountain vacation region in the very heart of the Dude Ranch country. From Gallatin Gateway Inn a thrilling 80 mile ride in comfortable motor coaches, through the spectacular Gallatin river valley and canyon, brings you to Yellowstone, largest of our national parks. The geyser basins alone are worth the trip to Yellowstone. Here, in a limited area, are more geysers than in all the rest of the world. Hundreds of them regularly stage their marvelous spectacle, shooting huge columns of boiling water, five to sixty feet in diameter, hundreds of feet in the air. Here "Old Faithful," the world's most perfect example of geyser phenomenon, sends its towering plume of water and steam into the air every sixty-five minutes.

Akin to the geysers are the seething Paint Pots of Yellowstone—and the boiling, hot springs holding in solution minerals and algae which



Leaving Gallatin Gateway Inn for the Park

impart rare and beautiful tints to the water. Mammoth Hot Springs offers a special phenomenon of its own. Gushing from the hillside, its mineral-charged waters have built up vast terraces of rock sculptured in every conceivable form and marvelously tinted by microscopic plant life.



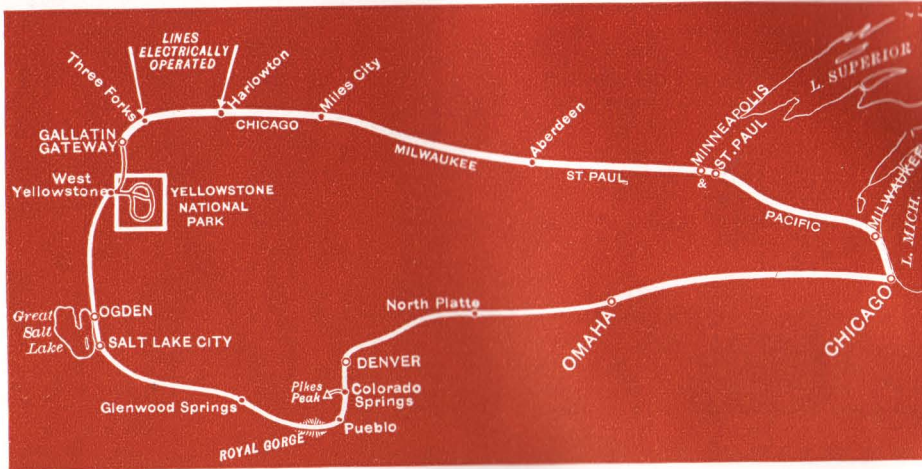
You can almost set your watch by Old Faithful. Every 65 minutes it sends its column of water 120 to 170 feet into the air. The most celebrated geyser in the world.

There is lovely Yellowstone Lake lying nearly eight thousand feet above sea level—the highest navigable body of water on the continent. From the north end of the lake, the Yellowstone River flows quietly away until it plunges downward over two precipices of 109 and 308 feet into its tremendous gorge and swirls away in its canyon 2000 feet wide and 1200 feet deep. Nothing in the world is comparable with the Grand Canyon of the Yellowstone for the overpowering splendor of its brilliant color and exquisite beauty.

Yellowstone is a vast game preserve abounding in friendly wild life. You will see bear and deer at many points along the highway; and if you are alert you will see buffalo, elk, antelope, big horn sheep and mountain goats ranging the forests, mountains and plains. Fishing, boating, swimming, motoring, hiking, horseback riding and mountain climbing all can be enjoyed in Yellowstone. You'll revel in the pure, keen air; in the warmth of the sunny days and the coolness of mountain nights; in that feeling of the "Old West"—the intangible thing called "atmosphere" in which Yellowstone abounds.

On page 30 you will find a map of the route through Yellowstone, also a further description of the Gallatin Gateway to the Park and the motor transportation, hotel and lodges in the Park. If you have not a copy of our "Yellowstone" booklet, we suggest you send for it.

Trip Number 4



FIRST DAY—Away to Yellowstone Park

Evening departure on The Milwaukee Road's de luxe Olympian, the air-conditioned, roller bearing train. See description under Trip Number 1, on page 10.

SECOND DAY—Minnesota, South Dakota

Mississippi River, St. Paul-Minneapolis, the Great Plains Country, the Missouri River and Indian Reservations. See description under second day Trip Number 1, on page 10.

THIRD DAY—Gallatin Gateway

Travel behind giant locomotives, sootless, cinderless, fumeless, *electrified* travel over the Big Belt Mountains, through magnificent Montana Canyon, on The Olympian, "Queen of Transcontinental Trains." Leave Olympian at Three Forks, Mont. and motor to The Milwaukee Road's beautiful, luxurious, mountain-cradled Gallatin Gateway Inn. Lunch at the Inn. (A more detailed description of the Gallatin Gateway trip and schedules of tour of the Park will be found under **YELLOWSTONE SIDE TRIP** on pages 30 and 31.) Thrilling 80-mile motor coach tour, available only via Gallatin Gateway, through picturesque, historic Gallatin Canyon to Old Faithful, visiting famous geysers, prismatic pools, cascades and paint pots en route. Evening, with entertainment, and night at Old Faithful.

FOURTH DAY—World's Great Geysers

Forenoon devoted to exploring Yellowstone's world-renowned geysers, exquisitely tinted pools and other strange phenomena. After lunch, motor trip over Continental Divide to Yellowstone Lake and through Hayden Valley, with its wild life, to the gorgeous canyon and mighty cataracts of the Great Fall of the Yellowstone River—one of the world's outstanding scenes. Evening entertainment and night at Canyon.

FIFTH DAY—Grand Canyon

Leave Grand Canyon by motor tour through Dunraven Pass, past Tower Fall and Camp Roosevelt to Mammoth, with its enchanting hot water terraces. Lunch at Mammoth, thence by motor to West Yellowstone, where you board train for Salt Lake City in late afternoon.

SIXTH DAY—Salt Lake City, Utah

Early morning arrival; motoring tour of the historic city, including the Temple and famous Mormon Church buildings. Mormon Tabernacle organ recital. Night at Salt Lake City.

SEVENTH DAY—Great Salt Lake

Trip to Saltair Beach, for swim in Great Salt Lake, where you can't sink. Evening departure for Colorado.

EIGHTH DAY—Through the Royal Gorge

Traveling all day among the loftiest, most spectacular peaks of the Rockies. Across the Continental Divide at Tennessee Pass (10,240 feet), through stupendous Royal Gorge, see the sensational hanging bridge above the roaring Arkansas River. Early evening arrival at Colorado Springs.

NINTH DAY—Colorado Springs

Your choice of many wonderful sight-seeing trips available: to the colorful, fantastic Garden of the Gods, Manitou Springs at the foot of Pikes Peak, Seven Falls, Cheyenne Mountain, Cliff Dwellings. Evening departure for Denver, with late evening arrival.

TENTH DAY—"Mile High" Capital

Sight-seeing in Denver, the Capitol Building with the golden dome, the observatory and Denver Mountain Parks. Leave Denver in late afternoon.

ELEVENTH DAY—The Overland Trail

A fast, delightful ride, with morning arrival in Chicago.



TRIP NUMBER 4

ELECTRIFIED THROUGH MONTANA CANYON—GALLATIN GATEWAY—YELLOWSTONE—SALT LAKE CITY—THE ROCKIES—ROYAL GORGE—COLORADO SPRINGS, DENVER.

*ESTIMATED COSTS

From Chicago

Standard
Sleeper

Round trip rail fare.....	\$ 49.30
Lower Berth.....	19.40
*Meals, transfers, hotels, sight-seeing..	80.00
	<u>\$148.70</u>

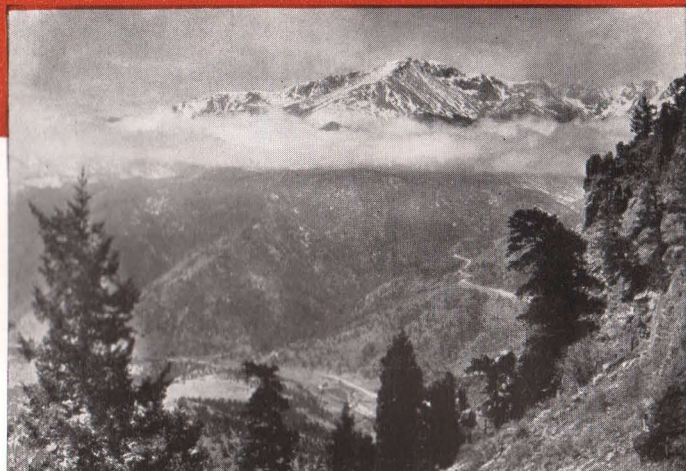
Ask about prepaid, personally escorted, all expense tours.

Standard sleeping car accommodations only are quoted. If coaches are used, there will be a saving of \$19.40.

*Costs include 2½ days in Yellowstone Park with accommodations at hotels. Accommodations at lodges \$2.50 lower.

Yellowstone Hotels were designed to fit their surroundings. Guest rooms offer metropolitan accommodations. In the dining room there are appetizing meals faultlessly served. In the evening you may lounge, dance or listen to lectures.

The spectacular Royal Gorge where the thundering Arkansas River cleaves its way through the Rockies.



The motor road up Pike's Peak is the last word in mountain highways.

*Includes cost of motor transportation, meals and accommodations at hotels while making complete 2½ day tour of Yellowstone National Park, \$36.00.

This trip covers nearly 4000 miles by train and motor through twelve states. Five nights are spent on board trains and five at hotels or lodges. It's a trip of constantly changing scenes and wide variety.

The prices quoted above will be decreased per passenger in the event two occupy a lower berth or one occupies an upper. Hotel rates are based on one to a room (except in Yellowstone) so that the price will be slightly less if there are two to a room.

Yellowstone Park hotels do not guarantee single rooms during rush periods except on payment of slight additional charge.

*COSTS FROM OTHER CITIES—The costs of this trip from points east and south of Chicago increase as rail fares, sleeping car rates and incidental expenses become higher; from points west of Chicago rail fares, sleeping car rates and incidentals decrease.

Our representatives can tell you what has been allowed for your meals, what hotels you can stop at, what sight-seeing may be included to keep within your vacation budget and approximately what it will cost and how long it will take from your home town.

The Mormon Temple and Tabernacle at Salt Lake City—two masterpieces of American architecture.



Yellowstone Side Trip

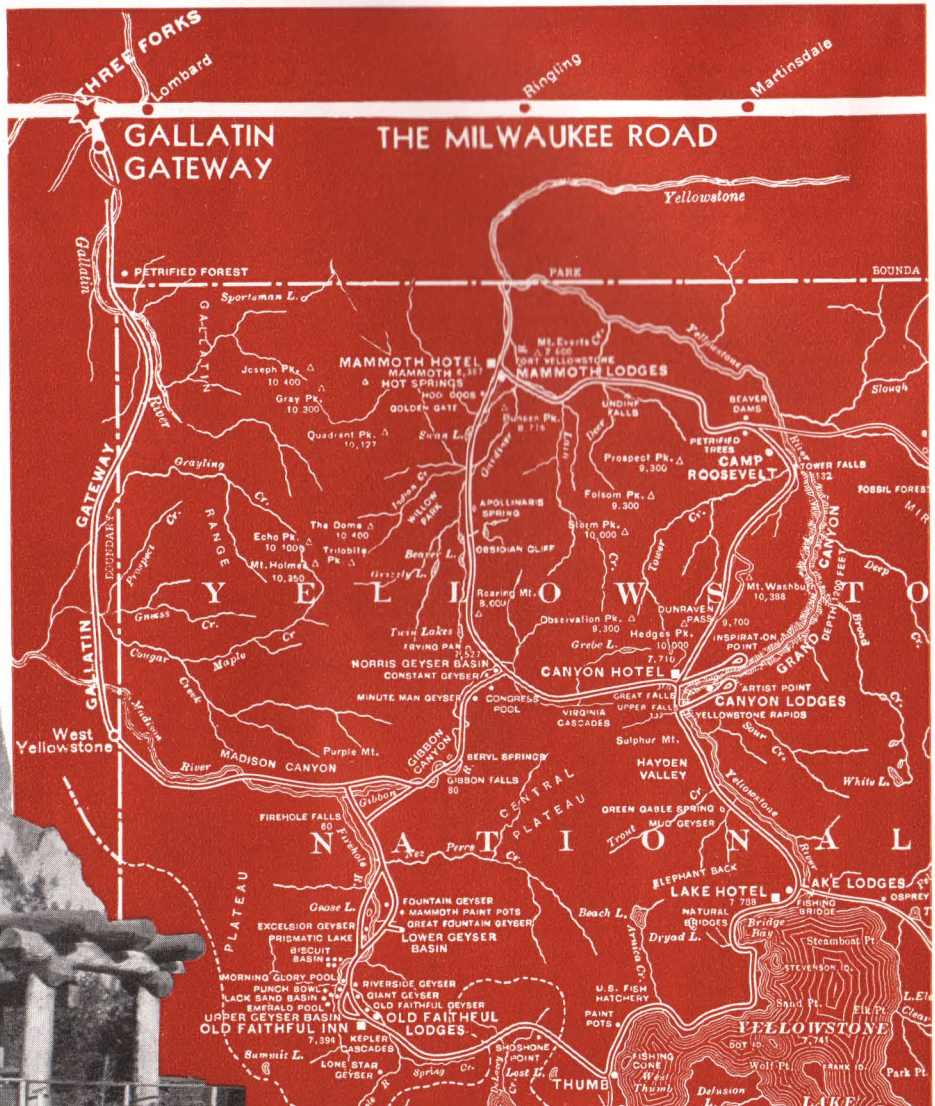
Going or returning to the Pacific North Coast, via The Milwaukee Road, a side trip may be arranged to Yellowstone National Park from Three Forks, Mont. The entrance to the Park is through scenic, historic Gallatin Gateway and the tour of the Park this way includes 160 extra miles of mountain motoring. It also includes overnight lodging at The Milwaukee Road's mountain-

cradled Gallatin Gateway Inn. All of these extras actually cost you only \$1.25 more than the tour of Yellowstone Park itself.

Operating on the schedule shown on the following page, comfortable motor coaches leave Gallatin Gateway Inn for the thrilling 85 mile trip up Gallatin River Canyon—past Spanish Peaks, within close range of Cathedral Rocks, Pulpit Rock, Sheep Mountain

Map showing Gallatin Gateway Entrance and routes through the Park.

When you pass through this arch—The Gallatin Gateway—you are well on your way to Yellowstone.





and across the numerous windings of Grayling Creek. Scenes of inspiring beauty unfold as the highway winds through pine-scented woodlands, along the rims of chameleon canyons, beside sparkling streams and waterfalls, within constant view of rugged peaks, buttes and snow crowned ranges. Gallatin Gateway is the portal to the last remnant of the romantic Old West of Nez Perce, Crow and Flathead, of John Colter, of trappers, of Custer. A fitting prelude and conclusion to Yellowstone's geysers and other mystic phenomena.

Cost of Park Tour as side trip from Three Forks, Mont.

Including Motor Transportation and Meals and Lodging

At Hotels \$37.25 — At Lodges \$34.75

A longer time than is provided by the regular "two-and-one-half days" tour may be spent at the various stopover points, if desired. For such additional time, meals and lodging are charged for at the following rates: At the hotels, \$6.50 to \$9.00 per day; at the lodges, \$4.50 to \$4.75 per day. American plan.

Motor Transportation Schedules Through the Park

In and out the GALLATIN GATEWAY as side trip from Three Forks, Mont.

		MEALS				SHORT STOPOVERS EN ROUTE AT
		Breakfast	Lunch	Dinner	Lodging	
1st Day						
Lv. Gallatin Gateway Inn.....	12:50 P.M.	.	1	.	Fountain Paint Pot.	
Ar. Old Faithful.....	5:41 P.M.	.	.	1		
2nd Day						
Lv. Old Faithful.....	1:15 P.M.	1	1	.	Yellowstone Lake.	
Ar. Grand Canyon.....	4:55 P.M.	.	.	1		
3rd Day						
Lv. Grand Canyon.....	8:10 A.M.	1	.	.	Dunraven Pass.	
Ar. Grand Canyon.....	10:15 A.M.	.	1	.	Norris Basin.	
Lv. Grand Canyon.....	12:40 P.M.	.	.	.		
Ar. West Yellowstone.....	2:20 P.M.	.	.	.		
Lv. West Yellowstone.....	2:40 P.M.	.	.	.		
Ar. Gallatin Gateway Inn.....	4:59 P.M.	.	.	1		

In GALLATIN GATEWAY out West Yellowstone as in Trip No. 4

		MEALS				SHORT STOPOVERS EN ROUTE AT
		Breakfast	Lunch	Dinner	Lodging	
1st Day						Fountain Paint Pot.
Lv. Gallatin Gateway Inn.....	12:50 P.M.	.	1	.	.	
Ar. Old Faithful.....	5:41 P.M.	.	.	1	1	
2nd Day						Thumb Paint Pots.
Lv. Old Faithful.....	1:15 P.M.	1	1	.	.	
Ar. Grand Canyon.....	4:55 P.M.	.	.	1	1	
3rd Day						Dunraven Pass. Norris Basin.
Lv. Grand Canyon.....	9:45 A.M.	1	.	.	.	
Ar. Mammoth Hot Springs.....	12:31 P.M.	.	1	.	.	
Lv. Mammoth Hot Springs.....	2:30 P.M.	
Ar. West Yellowstone.....	5:08 P.M.	.	.	1	.	

Tumbling mountain fishing streams wend their way through rugged Gallatin Canyon.

The lounge at hospitable Gallatin Gateway Inn is an evening gathering place.



Alaska Extension

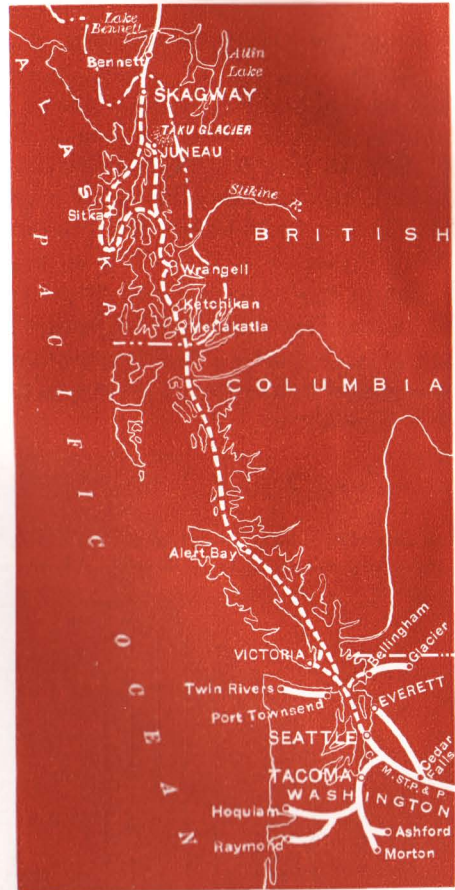
Alaska, land of the midnight sun, of totem poles, of Robert W. Service, of the gold rush days, can be taken out of the pages of fiction and made a reality. This land of adventure is now within easy reach of the vacationist. Faster train and ship schedules and lower fares enable you to stop dreaming about it and actually take an Alaska trip.

As an independent trip to the Pacific North Coast or in connection with Trip number 1, 2 or 3, you may make a marvelous and thrilling extension cruise to Alaska on the palatial steamships from Seattle. This season, a nine day trip provides an opportunity to visit Alaska within the ordinary two or three weeks' vacation period.

This nine day cruise through the Inside Passage, calling at all the important cities of Southeastern Alaska, is unusual in many respects. You sail for 2500 miles through a protected waterway, on sheltered seas in view of some of the most spectacular mountain scenery. Truly an ocean voyage, yet with none of the discomforts that being on the open sea brings to some.

Your ship visits Taku Glacier, near Juneau. Slowly moving toward open water, Taku and other such "living" glaciers present a most awe-inspiring sight as they loom hundreds of feet above your steamer's deck. Tons of blue ice crash down the face of the glacier into the water at the will of your captain, who merely has to blow a blast from the ship's whistle to cause this phenomenon. The most Northern port of call is Skagway, a town still rich in the reminders of the rip-roaring gold rush days when the stampede was on to the Klondike. And you'll enjoy the visit to dreamy Sitka with its dramatic Russian and native history and a superb natural setting. You stop at other interesting ports of call; you'll see totem poles; Indians; the activities of the Great Alaskan fishing industry, and fjords that rival those of Norway.

You'll enjoy every minute of your time on shipboard—lounging in your deck chair—joining, if you care to, in pleasant social



The "inside passage" to Alaska.

activities in spacious public quarters—participating in shuffle board and other deck games. Shore parties are always a bit of gay adventure. And my how you can eat—"six a day"—breakfast, morning bouillon, luncheon, afternoon tea, dinner and supper.

COSTS

All-expense, nine to eleven full days on cruise—Seattle to Skagway and return; including transportation, meals and standard state room accommodations, \$105.00 and up.

You sail 2500 miles and spend every night on the steamer.

In order to be sure of your accommodations on these cruises, reservations should be made well in advance. Ask any Milwaukee Road Travel Bureau for information about other Alaska cruises.

CHICAGO MILWAUKEE ST. PAUL AND PACIFIC

1940 ALASKA SAILINGS

STEAMER	NORTHBOUND						
	LEAVE SEATTLE 9:50 A.M.	ARRIVE KETCHIKAN	ARRIVE WRANGELL	ARRIVE PETERSBURG	ARRIVE JUNEAU	ARRIVE HAINES (CHILKOOT BARRACKS)	ARRIVE SKAGWAY
DENALI	May 7	May 9	May 9	May 10	May 11	May 11	May 12
Mt. McKinley	May 14	May 16	May 16	May 17	May 18	May 18	May 19
*DENALI	May 21	May 23	May 23	May 24	May 24	May 25
*DENALI	May 31	June 2	June 3	June 3	June 4	June 4	June 5
DENALI	June 11	June 13	June 13	June 14	June 15	June 15	June 16
ALASKA	June 14	June 16	June 16	June 17	June 18	June 18	June 19
*YUKON	June 21	June 23	June 23	June 24	June 24	June 25
DENALI	June 25	June 27	June 27	June 28	June 29	June 29	June 30
*ALASKA	June 28	June 30	June 30	July 1	July 1	July 2
YUKON	July 2	July 4	July 4	July 5	July 6	July 6	July 7
ALASKA	July 9	July 11	July 11	July 12	July 13	July 13	July 14
YUKON	July 16	July 18	July 18	July 19	July 20	July 20	July 21
ALASKA	July 23	July 25	July 25	July 26	July 27	July 27	July 28
YUKON	July 30	Aug. 1	Aug. 1	Aug. 2	Aug. 3	Aug. 3	Aug. 4
ALASKA	Aug. 6	Aug. 8	Aug. 8	Aug. 9	Aug. 10	Aug. 10	Aug. 11
YUKON	Aug. 13	Aug. 15	Aug. 15	Aug. 16	Aug. 17	Aug. 17	Aug. 18
ALASKA	Aug. 20	Aug. 22	Aug. 22	Aug. 23	Aug. 24	Aug. 24	Aug. 25
YUKON	Aug. 27	Aug. 29	Aug. 29	Aug. 30	Aug. 31	Aug. 31	Sept. 1
ALASKA	Sept. 3	Sept. 5	Sept. 6	Sept. 6	Sept. 7	Sept. 7	Sept. 8

*Nine Day Totemland Cruise.

ADDITIONAL SAILINGS: SS. Denali is also scheduled to make three additional 11-day Inside Passage Cruises, to sail from Seattle at 9 a.m. Friday, August 9; 9 a.m. Thursday, August 22; 5 p.m. Wednesday, September 4, calling at Ketchikan, Wrangell, Petersburg, Taku Glacier, Juneau, Haines, Skagway. Sitka—thence Southbound calling at Sitka, Ketchikan, and Seattle.

SOUTHBOUND

LEAVE SKAGWAY	LEAVE JUNEAU	LEAVE SITKA	LEAVE PETERSBURG	LEAVE WRANGELL	LEAVE KETCHIKAN	ARRIVE SEATTLE
May 12	May 13	May 14	May 15	May 15	May 16	May 18
May 19	May 20	May 21	May 22	May 22	May 23	May 25
May 25	May 26	May 26	May 27	May 27	May 28	May 30
June 5	June 6	June 6	June 7	June 7	June 8	June 10
June 16	June 17	June 18	June 19	June 19	June 20	June 22
June 19	June 20	June 21	June 22	June 22	June 23	June 25
June 25	June 26	June 26	June 27	June 27	June 28	June 30
June 30	July 1	July 2	July 3	July 3	July 4	July 6
July 2	July 3	July 4	July 4	July 5	July 7
July 7	July 8	July 9	July 10	July 10	July 11	July 13
July 14	July 15	July 16	July 17	July 17	July 18	July 20
July 21	July 22	July 23	July 24	July 24	July 25	July 27
July 28	July 29	July 30	July 31	July 31	Aug. 1	Aug. 3
Aug. 4	Aug. 5	Aug. 6	Aug. 7	Aug. 7	Aug. 8	Aug. 10
Aug. 11	Aug. 12	Aug. 13	Aug. 14	Aug. 14	Aug. 15	Aug. 17
Aug. 18	Aug. 19	Aug. 20	Aug. 21	Aug. 21	Aug. 22	Aug. 24
Aug. 25	Aug. 26	Aug. 27	Aug. 28	Aug. 28	Aug. 29	Aug. 31
Sept. 1	Sept. 2	Sept. 3	Sept. 4	Sept. 4	Sept. 5	Sept. 7
Sept. 8	Sept. 9	Sept. 10	Sept. 11	Sept. 11	Sept. 12	Sept. 14

The fleet is in—Elliott Bay, Seattle.



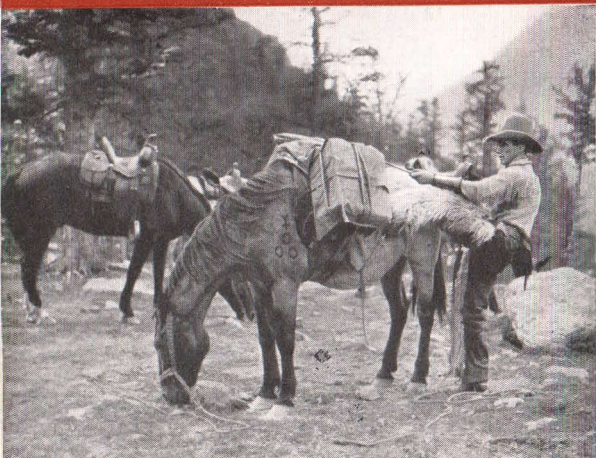
Afternoon tea in sheltered seas en route to Alaska.

Romance and grandeur in Alaska waters.



Indian totem pole in Alaska.

Dude Ranches



A good horse wrangler throws the complicated Diamond Hitch as easily as you can tie a shoelace.



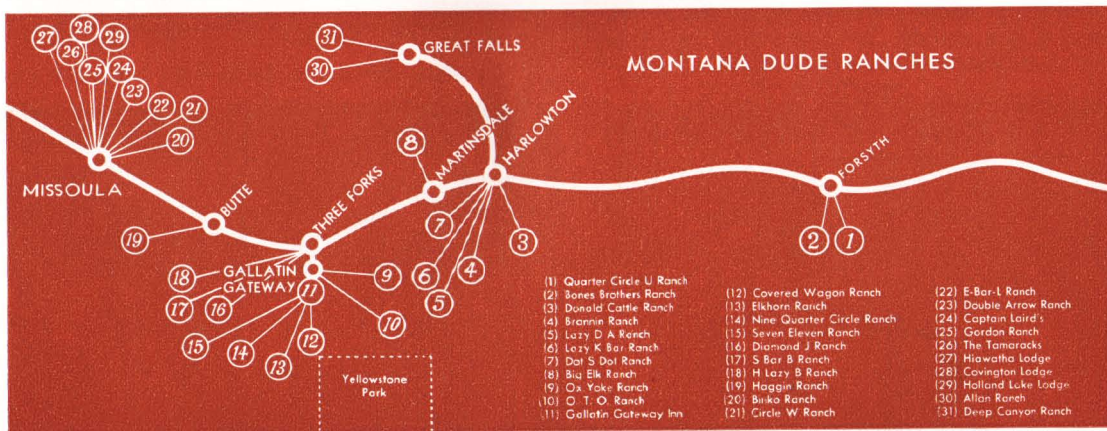
Looking over the "cavvy" from the corral fence. A favorite observation point at any Dude Ranch.

If you have never been at a Dude Ranch, you have a treat coming. It's genuine ranch life with this difference—the ranches are devoted wholly, or in part to the entertainment of their guests. And what a job they do! In clear, sparkling air, surrounded by superb mountain scenery, you'll enjoy a thrilling program of outdoor activity. You'll be made comfortable and "at home" by true western hospitality that is satisfied with nothing less than giving you the grandest time of your life.

On the main line of The Milwaukee Road, excellent Dude Ranches are within easy reach of Baker, Forsyth, Harlowton, Martinsdale, Great Falls and Butte. There are many of them in the country immediately surrounding Gallatin Gateway Inn, and another group in the section north of Missoula.

If you have any love for the outdoors—go to Montana and spend your vacation on a ranch. Though there is a wide variety of activities open to you, most of them center around the corral. You needn't be an expert horseman—and may be completely inexperienced. Under the wise guidance of a good "wrangler" and with a well-broken, sure-footed horse at your command, you will soon be at home in the saddle.

These ranches are neither luxurious country clubs nor primitive cabins. They offer simple, modern comforts, well-prepared, wholesome food and a unique opportunity for outdoor enjoyment. There is no need to carry an extensive wardrobe as most, or all, of your time will be spent in outing clothes.





"Far from the madding crowd"—Dude Ranches feature solid comfort and healthful outdoor activities.

A foursome in the Pacific Northwest wonderland.



Almost any ranch you would select is near good trout water that may be stocked with native brook trout, rainbows, brownies, steelheads or loch leven. So bring along your fishing tackle. Licenses and additional supplies are generally obtainable at the ranch.

We will be glad to give you further information about these ranches, or put you in touch with ranch proprietors.

It is desirable to make your reservations in advance of your arrival.

Gallatin Gateway Inn

To those who want to come "out" and see, or gather first hand information about the ranches around the Gallatin and Madison rivers north of Yellowstone, we suggest a visit at Gallatin Gateway Inn. The Inn is located thirty-five miles south of Three Forks on the Gallatin River and is an ideal recreational headquarters. But a short canter away on picturesque trails or but a stone's throw from motor highways are secluded ranches and mountain resorts that will welcome a visit of inspection from you.

Mountain-cradled Gallatin Gateway Inn in the heart of Dude Ranch country.



The Sportsman's Paradise

Every mile of The Milwaukee Road's Northwest, from the Dakotas to the Olympic Peninsula, offers almost unlimited opportunity for indulging a taste for outdoor sports. Obviously, in the limited compass of these pages, we cannot give detailed information, but can only sketch roughly the thrills that await you in the pursuit of your favorite pastime and suggest you call on our Travel Bureaus for further information.

The Olympic Peninsula

The Olympic Peninsula in Washington may be last on the trail of The Olympian, but it is first in the hearts of sportsmen who have been there. Here in the deep water of Lake Crescent are found the big, gamy Beardslee trout and his smaller relative, the Crescent. Lake Quinault, the Quinault River, the Queets, the Humptulips and the lesser lakes and streams abound in steelheads, mountain trout, bass and tyee.

Between "strikes" one may run through the "white water" of mountain streams in Indian dugouts; or blaze a new trail through the forest primeval to Mt. Olympus, Mt. Queets, Mt. Christie or some unnamed peak. Big game is plentiful. Deer, elk and bear may be shot in season, while cougar, wildcat, and lynx may be hunted at any time.

Among the resorts where sportsmen may make their headquarters and leave their families while roughing it in the wilds, are those listed on the right hand side of opposite page.

Hunting and Fishing in Washington, Idaho and Montana

In this section the ardent fisherman can find waters to suit his taste from the deep sea fishing of Puget Sound and the Pacific, where King, Tyee and Chinook salmon are found, to the headwaters of the Missouri in Montana. While there is a considerable variety of fish to be taken, the finest and most common fishing in the lakes and streams of the west is for trout—trout of many varieties and tremendous size, trout from glacier-fed, roaring mountain streams, from deep, forest-lined lakes and tiny mountain pools far up above the timber line. It is impossible to enumerate all of the streams, but some of the best

known are the Gallatin, Madison and Jefferson in south central Montana; the water of the Hell Gate, the Missoula and Clark's Fork farther west in Montana; the St. Maries in Idaho and the many streams of Washington. All have their enthusiastic champions.

In the mountainous country of Montana, Idaho and Washington, bears (brown, black and grizzly) abound. There are deer, elk, moose, antelope, mountain lion and mountain goat. And if you push up into the wild and lonely peaks, you may have even the thrill of stalking the big-horn sheep—the mighty *Ovis Canadensis*, reckoned one of the finest of big game trophies by hunters all over the world. Some animals may be hunted at all seasons of the year, for example—coyote, wolf and mountain lion.

Some of the Dude Ranch owners and many resort proprietors have facilities for caring for hunting parties during the seasons. Guides and camping equipment are furnished by the management, but arrangements should be made in advance through The Milwaukee Road Travel Bureaus shown on page 40.

Mountain Climbing

Long one of the favorite sports of Europe, and now rapidly gaining enthusiastic advocates in this country, is mountain climbing. And there are mountains here affording ideal climbs for everyone from the rank beginner and the novice to the experienced amateur. The ascents of Mt. Rainier, Mt. Baker or Mt. Olympus are as testing climbs as anyone can desire if you go to the very summits; yet their lower slopes are ideally suited to the less ambitious. There are Alpine meadows carpeted with flowers. There are vast glacier fields, deep crevasses and sheer, rocky precipices that would more than test the agility of a goat.

Besides the peaks mentioned, the climber has his choice of the hundreds of lesser known peaks of the Big Belts, Rockies, Bitter Roots, Cascades and Olympics. Dozens of them afford sport of the most thrilling nature—and there are many peaks, in isolated ranges within easy pack train distance, that you can be the very first to conquer!



There are hundreds of fast-running trout streams in the Northwest.

OLYMPIC PENINSULA RESORTS

ABERDEEN, WASH.
Morck Hotel
FORKS, WASH.
Woodland Hotel
HOQUIAM, WASH.
Emerson Hotel
LAKE CRESCENT, WASH.
P. O., Port Angeles
Lake Crescent Tavern
Ovington's Summer Resort
Rosemary Inn,
LA PUSH, WASH.
Culley's Hotel
OLYMPIA, WASH.
New Governor Hotel
Hotel Olympian
PACIFIC BEACH, WASH.
Pacific Beach Hotel
PORT ANGELES, WASH.
Olympic Hot Springs
Sol Duc Hot Springs
PORT TOWNSEND, WASH.
Chevey Chase
QUINAULT, WASH.
The Quinalt

'Way up above the clouds. These adventurous climbers are nearing Columbia Crest, Mt. Rainier.



Above: Bands of elk come down to the water holes every day. You can hunt with a camera.

Left: The "Modern and Primitive" on the Olympic Peninsula—outboard motor and Indian dugout

New Developments in the Pacific Northwest

Olympic National Park


By special act of Congress 643,000 acres on the Olympic Peninsula have been set aside as Olympic National Park. Within its confines are primeval forests of giant Douglas fir, a section of the Olympic mountain range and innumerable lakes and streams. Trails and interesting mountain roads, include the spectacular Hurricane Ridge Drive. Improved ferry service will be provided from Seattle, and connections made with motor coaches traveling over the 350-mile Olympic Highway Loop.

Skagit Power Project

Partially within Mt. Baker National Forest is the Skagit Power Project which supplies electricity for Seattle. Huge concrete dams have changed the rocky gorges into sparkling blue lakes. A two day trip by rail and boat includes Diablo Dam and Gorge, Ruby Dam and Reservoir, Ladder Creek Cascades and dozens of other beauty spots.

Grand Coulee Dam

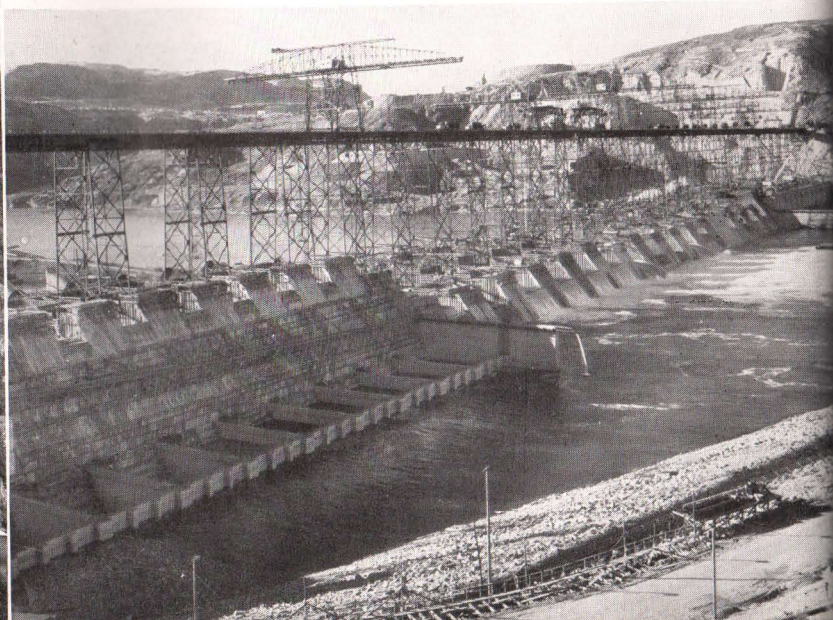
Easily accessible by motor coach from Spokane, Grand Coulee Dam is by all odds the largest man-made structure in the world. The finished dam will be 4,300 feet long at the crest and 3,000 feet long at the base, impounding a lake 151 miles long averaging 4,000 feet in width and with a depth of 375 feet. The turbines operating the huge generators will have a horsepower rating of 2,700,000—nearly a million more than Boulder Dam.



Snow crowns the tall peaks of the Olympic mountains all summer long. In the distance lies Bailey Range.

389 feet high, Diablo Dam impounds a lake $6\frac{1}{2}$ miles long and produces a million horsepower. Note the inclined railway.

(Below, right) Big? Yes, but this is only part of the foundation of Grand Coulee Dam. Cofferdams have been removed and the Columbia river is flowing through the gaps.



Travel by Rail



A private tour party. Right: Seven Falls, Colorado Springs.

More and more smart people the country over are appreciating the convenience, comfort, safety and economy of travel by rail. There is no nervous strain, no fatigue, no traffic congestion or parking problem, no hazard due to weather or road conditions. The engineer does the driving while you travel in swift, restful comfort. On The Milwaukee Road's famous Olympian you ride relaxed and at ease while the grandest scenery in the world rolls by your window.

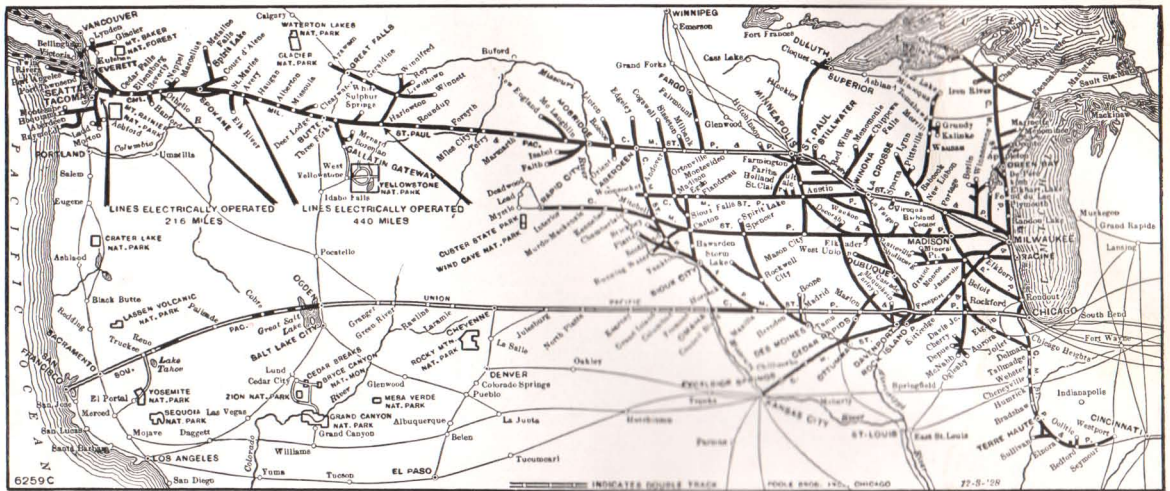
In many western cities **TRAIN-AUTO SERVICE** enables you to arrange in advance for a current model automobile for your individual use. The car will be at the station ready for you on arrival and may be used in the same manner as your own car. Details can be handled by your local Ticket Agent at the time you purchase your ticket. Car may be occupied by one to five persons at same low cost. There is no service charge for making the necessary arrangements.

At all points of interest, sight-seeing trips in comfortable, specially designed motor coaches are available at reasonable prices. At slightly higher cost, private motor cars with competent, well posted chauffeurs may be hired. For those who wish to have their own automobiles at hand when they reach their destination, The Milwaukee Road has evolved a convenient and economical shipping plan. Without any crating or special preparation, your car may be placed aboard a train and transported at a very low rate. Any Milwaukee Road agent will gladly give you complete details of this plan.

Banff Springs, Canadian Rockies.



The Milwaukee Road Travel Bureaus



TRAVEL AND INFORMATION BUREAUS

Our Travel Bureaus are eager to tell you of the advantages of Milwaukee Road service to the West and Northwest. Vacation Itineraries will be cheerfully arranged.

ABERDEEN, SO. DAK.	Milwaukee Station, 1 N. Main Street, Phone 2325	R. A. Burns, D. P. A.
ATLANTA, GA.	717 Healey Bldg., Phone Walnut 6585	G. L. Crosby, Gen. Agt.
BELOIT, WIS.	Milwaukee Station, Phone 257	C. O. Swanberg, P. & T. A.
BOSTON, MASS.	294 Washington St. (510-12 Old South Bldg.), Phone Liberty 9812	T. A. Morgan, Gen. Agt.
BUFFALO, N. Y.	295 Main St. (206 Ellicott Square Bldg.), Phone Washington 0634	R. F. Trumper, Gen. Agt.
CEDAR RAPIDS, IOWA	Milwaukee Station, 401 First Ave., Phone 6027	G. A. Crabb, Tkt. Agt.
CHICAGO, ILL.	179 W. Jackson Blvd. or 711 "100 W. Monroe" Bldg., Phone Central 7600	B. J. Schilling, G. A. P. D.
CINCINNATI, OHIO	49 E. Fourth St. (204 Dixie Terminal), Phone Main 5010	G. C. Armstrong, Gen. Agt.
CLEVELAND, OHIO	925-927 Euclid Ave. (937 Union Commerce Bldg.), Phone Main 2457	C. M. Park, Gen. Agt.
DAVENPORT, IOWA	Union Station, Foot Harrison St., Phone 2-5304	J. H. Judge, D. P. A.
DENVER, COLO.	1706 Welton St. (217 Patterson Bldg.), Phone Tabor 5962	H. L. Holmes, Gen. Agt.
DES MOINES, IOWA	501 Locust St., Phone 3-6468	H. W. Warren, D. P. A.
DETROIT, MICH.	131 LaFayette Blvd. W. (806 Trans. Bldg.), Phones Rand. 3716-3717	W. A. Murphy, Gen. Agt.
DUBUQUE, IOWA	Milwaukee Station, Phone 174	W. F. Keefe, D. P. A.
DULUTH, MINN.	509 Alworth Bldg., Phone Melrose 524, Superior 1730	R. E. Beauvais, Gen. Agt.
GREEN BAY, WIS.	Milwaukee Station, Phone Adams 866	E. D. Crim, P. & T. A.
JANESVILLE, WIS.	Milwaukee Station, Phone 191	J. M. Brown, P. & T. A.
KANSAS CITY, MO.	202 E. 11th St. (11th and Grand), Phone Victor 6390	M. A. Oberg, G. A. P. D.
LA CROSSE, WIS.	Milwaukee Station, Phone 76	H. J. Troger, Pass. Agt.
LOS ANGELES, CALIF.	210 W. 7th St. (1024 Van Nuys Bldg.), Phone Trinity 9555	H. W. Porter, Gen. Agt.
MADISON, WIS.	Milwaukee Station, Phone Badger 6300	M. L. Olson, D. P. A.
MASON CITY, IOWA	9th St. and So. Pennsylvania Ave., Phone 324	W. F. Cody, D. P. A.
MILWAUKEE, WIS.	East Wisconsin Ave. at No. Water St., Phone Daly 1864	C. F. Dahnke, G. A. P. D.
MINNEAPOLIS, MINN.	700 Marquette Ave. (La Salle Bldg.), Phone Main 3441	H. M. Larson, G. A. P. D.
NEW ORLEANS, LA.	1522 Canal Building, Phone Raymond 7581	C. T. Carter, Gen. Agt.
NEW YORK, N. Y.	630 Fifth Ave. (Rockefeller Center), Phone Circle 7-1680	G. L. Cobb, G. A. P. D.
OMAHA, NEBR.	1611 Farnam St. (New Farnam Bldg.), Phone Jackson 4481	W. E. Bock, G. A. P. D.
PHILADELPHIA, PA.	123 So. Broad St. (Fidelity-Phila. Trust Bldg.), Phone Pennypacker 0407-08	E. K. Garrison, G. A.
PITTSBURGH, PA.	7th Ave. and Grant St. (1122 Gulf Bldg.), Phones Atlantic 2438-39	J. M. Cunningham, G. A.
PORTLAND, ORE.	532 S. W. Yamhill St., Phone Atwater 1397	F. A. Swanson, Gen. Agt.
ST. LOUIS, MO.	611 Olive St. (2003 Railway Exchange), Phone Chestnut 0337	G. W. Stoltz, Gen. Agt.
ST. PAUL, MINN.	362 St. Peter St. (5th and St. Peter), Phone Cedar 4491	J. J. Osie, G. A. P. A.
SALT LAKE CITY, UTAH	503 Utah Oil Bldg., Main and Broadway, Phone Wasatch 3625	Geo. B. Miller, Gen. Agt.
SAN FRANCISCO, CALIF.	653 Market St. (Palace Hotel Bldg.), Phone Garfield 5951	A. Tansley, D. P. A.
SEATTLE, WASH.	4th Ave. and Union St. (White Bldg.), Phone Eliot 6800	J. F. Bahl, G. A. P. A.
SIOUX CITY, IOWA	Milwaukee Station, 2nd and Pierce Sts., Phone 8-0511	Clyde Zane, D. P. A.
SIOUX FALLS, SO. DAK.	Milwaukee Station, 5th and Phillips, Phone 217	L. F. West, P. & T. A.
SPOKANE, WASH.	Sprague Ave. and Post St., Phones Main 2261 and 4121	J. R. Reagan, D. P. A.
TACOMA, WASH.	112 South Ninth Street, Phone Main 2101	R. E. Schaffert, C. P. A.
VANCOUVER, B. C.	793 Granville Street, Phone Seymour 4611	F. J. Calkins, Gen. Agt.
VICTORIA, B. C.	902 Government Street, Phone Garden 7041	Eric Marshall, Agt.

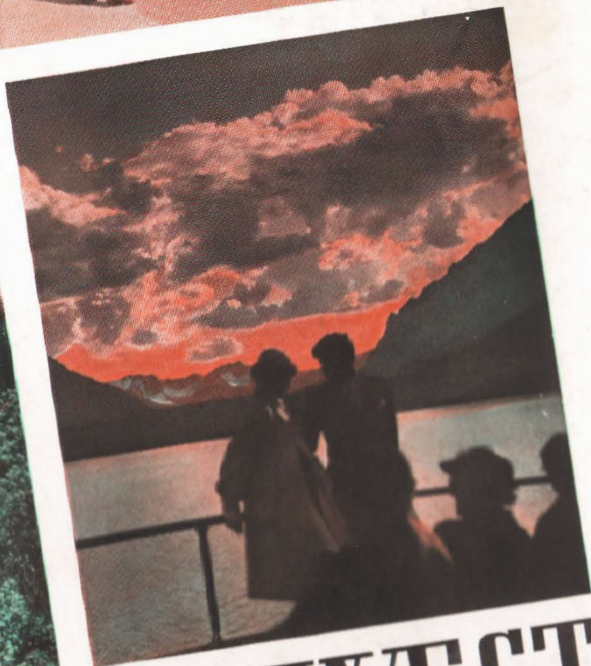
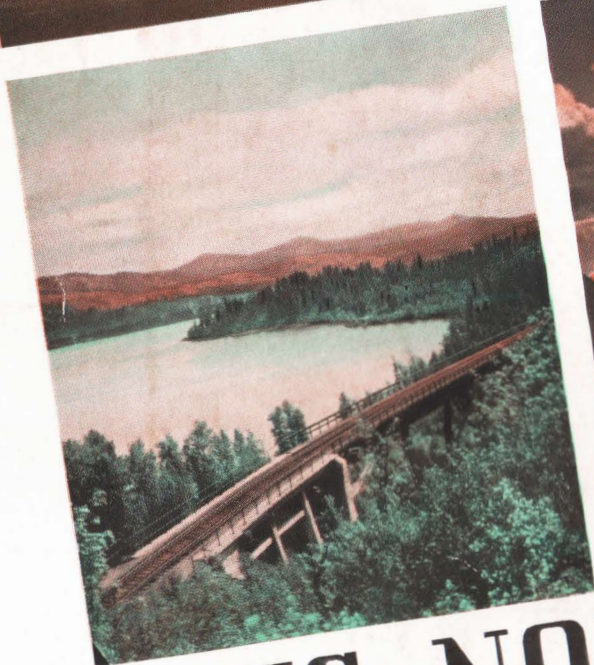
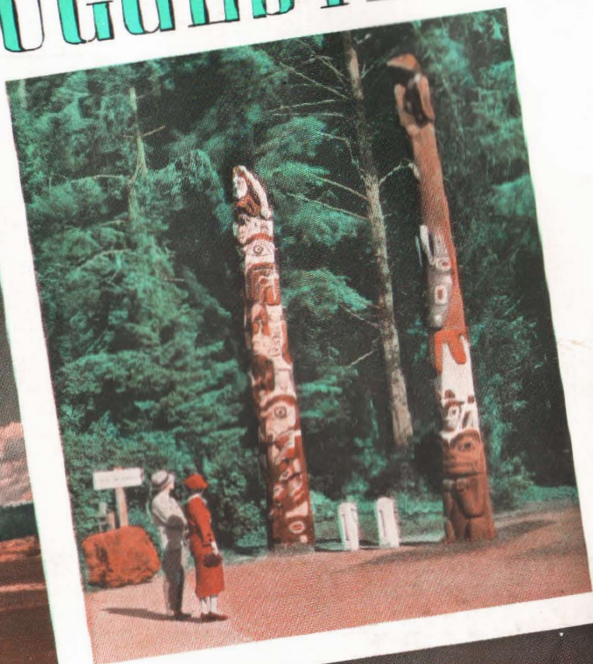
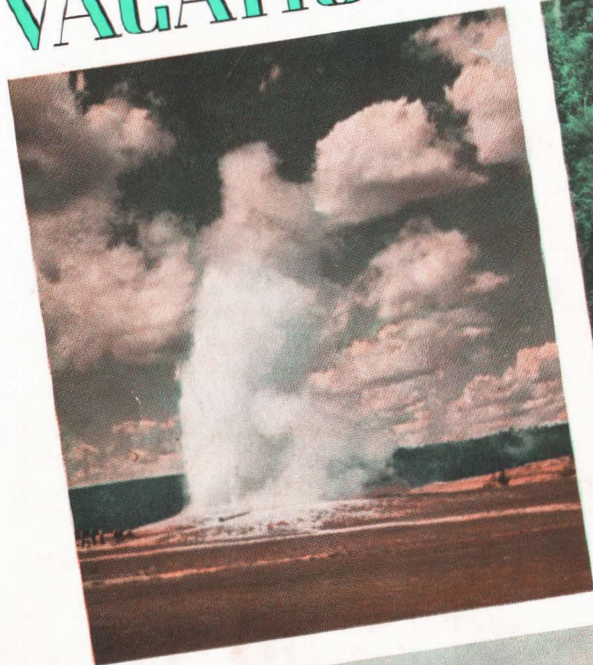
F. N. HICKS
Passenger Traffic Manager

H. SENGSTACKEN
General Passenger Agent

CHICAGO, ILL.

The MILWAUKEE ROAD
AMERICA'S LONGEST ELECTRIFIED RAILROAD

VACATION SUGGESTIONS



PACIFIC NORTHWEST

CHICAGO
MILWAUKEE
ST. PAUL
AND PACIFIC

