

*Electrified over four
mountain ranges*

THE OLYMPIAN

CHICAGO
MILWAUKEE
ST. PAUL
AND PACIFIC

CHICAGO
MILWAUKEE
ST. PAUL
AND PACIFIC

THE OLYMPIAN

COMPLETELY AIR-CONDITIONED





CHICAGO - ST. PAUL - MINNEAPOLIS - BUTTE - SPOKANE - SEATTLE - TACOMA

America's favorite transcontinental train over a famous scenic route

CHICAGO - ST. PAUL - MINNEAPOLIS
BUTTE - SPOKANE - SEATTLE - TACOMA

PERHAPS no other rail journey in the world holds the same appeal for the traveler as the journey from Chicago to the Pacific Northwest on the silent, roller bearing Olympian. Here is the perfect combination of a magnificently beautiful route and a supremely luxurious train.

Whether it is traversing the Great Plains region, the fertile Inland Empire or soaring swiftly over the mountains, you are always cradled in comfort on The Olympian. Air conditioning keeps the whole train clean and at the proper temperature — keeps you rested and refreshed. You enjoy beautifully appointed accommodations, flawless service, delightful meals and a thrilling 656 mile electrified ride. All good reasons why your first trip on The Olympian will give you a new conception of the complete, restful comfort of travel via The Milwaukee Road.

Tune in your favorite program while the waiter brings whatever you wish.



The club-observation car provides a comfortable place to read, relax or meet fellow passengers.

The women's lounge
is as delightful as
your living room.



Nothing like
a shower to
refresh you.



There is com-
fort and seclu-
sion in the
men's lounge.



The comforts of home plus the service of a de luxe hotel

• • •

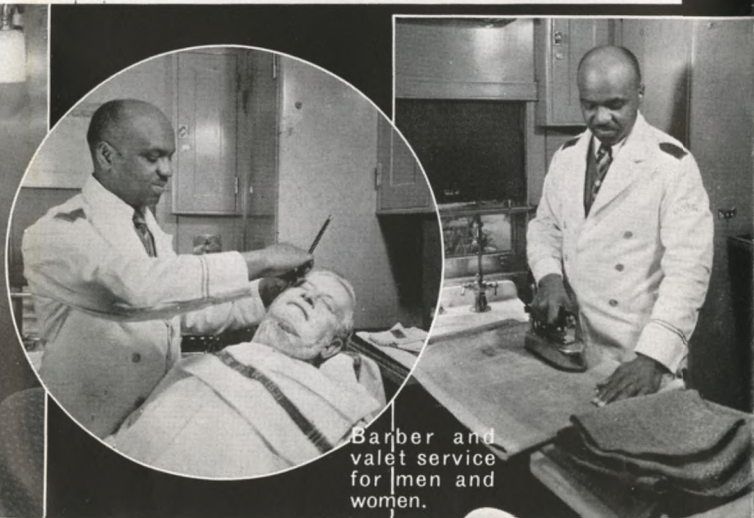
From your first waking hour to the moment when you switch out the light and snuggle down in your soft, roomy berth for a refreshing night's sleep, you will find everything needed for your comfort on The Olympian.

The tastefully decorated club-observation car with its deeply upholstered, comfortable chairs and conveniently placed lights is your lounge. Radio, magazines and newspapers are provided for your entertainment; a writing desk enables you to catch up on your correspondence or work on business problems. If you wish playing cards, a beverage, light refreshments or smokes, you have only to touch the bell beside your chair for prompt, smiling service.

The sleeping cars are the last word in providing every facility for happy living. Pleasing decorations accent an atmosphere of spaciousness and charm. Seats are unusually comfortable and the roomy berths are fitted with luxurious coil spring mattresses. Individually controlled lighting, immaculate linen and a fresh pillow for a daytime nap are small touches that all add to enjoyment.

The men's and women's dressing rooms and lounges are large and well-lighted. They provide ample toilet facilities and plenty of space for smoking or lounging during the day. A shower bath, barber shop and valet service are also available and help materially in creating the satisfying feeling that you have at your command, every comfort and convenience that would be found in a private club or a fine hotel.

Every car on The Olympian is, of course, completely air conditioned. There is no dust, soot or cinders. The air is always refreshingly clean and kept at exactly the right temperature and humidity.



Barber and
valet service
for men and
women.



Unusual comfort and beauty in the standard sleeping cars. Headboards make each section semi-private.

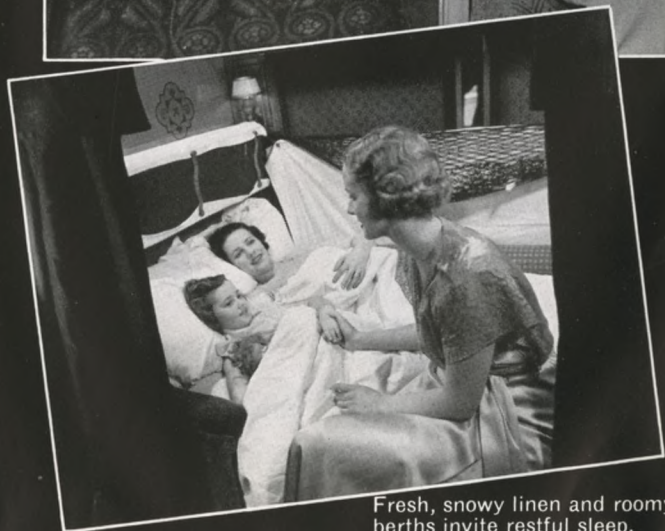


Pillows add to your comfort.



Commodious men's wash room.

Women's wash room features a dressing table and large mirrors.



Fresh, snowy linen and roomy berths invite restful sleep.

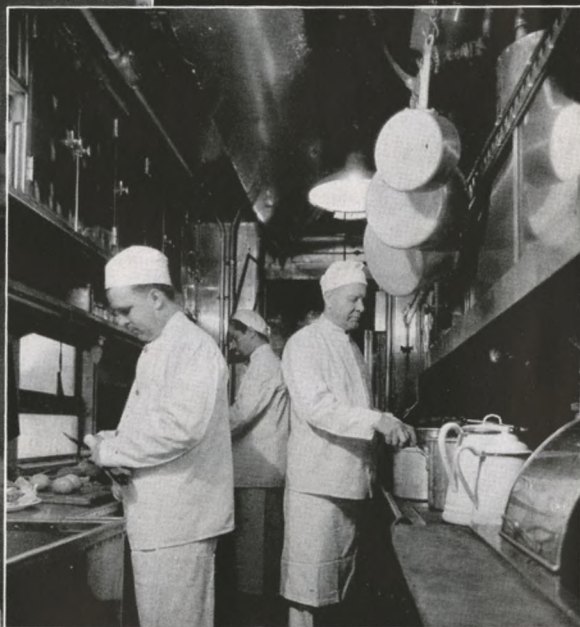


And here is the chief miracle-worker.
Thrilling performances three times a day.

Culinary Miracles ... those meals on The Olympian

When the dulcet tones of the chimes announce meal time on The Olympian, our guests instinctively look forward to an adventure in the high art of dining . . . to meals so flawlessly prepared and served that they have brought seasoned travelers back again and again to ride on this great train.

The commissary of The Milwaukee Road has at its disposal the choice products of a market two thousand miles long. The resourceful, carefully trained chefs working in amazingly compact and efficient galleys prepare a surprising variety of tempting dishes, each one an appetizing gem. The menu



Culinary miracles are performed
in the compact, modern galley.

offers an almost unlimited variety of table d'hote and a la carte dishes.

The service and surroundings are, of course, an important part of happy dining. We believe you will approve of both on The Olympian. The pleasing decorations of the dining cars, the fresh, pure air and snowy napery form an ideal setting for agreeable dining, while the stewards and waiters are trained to be courteous, deft and helpful.

Not least in importance is the surprisingly modest cost of meals on The Olympian. There are club breakfasts from 50c, luncheons and dinners from 75c. The "Chef's Selection Plate" served at noon and at night provides a hot, appetizing meal of meat, vegetables, bread and butter and a beverage for only 50c. A special off-the-tray service is also provided for tourist sleeping car and coach passengers who prefer to dine at their seats. This includes a variety of sandwiches at 10c, pies at 10c and coffee at 5c.

Air conditioned dining cars and faultless service make delicious meals seem even better.

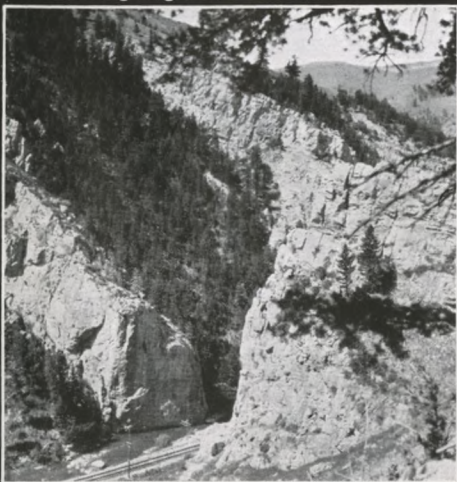


There is a special menu for children.





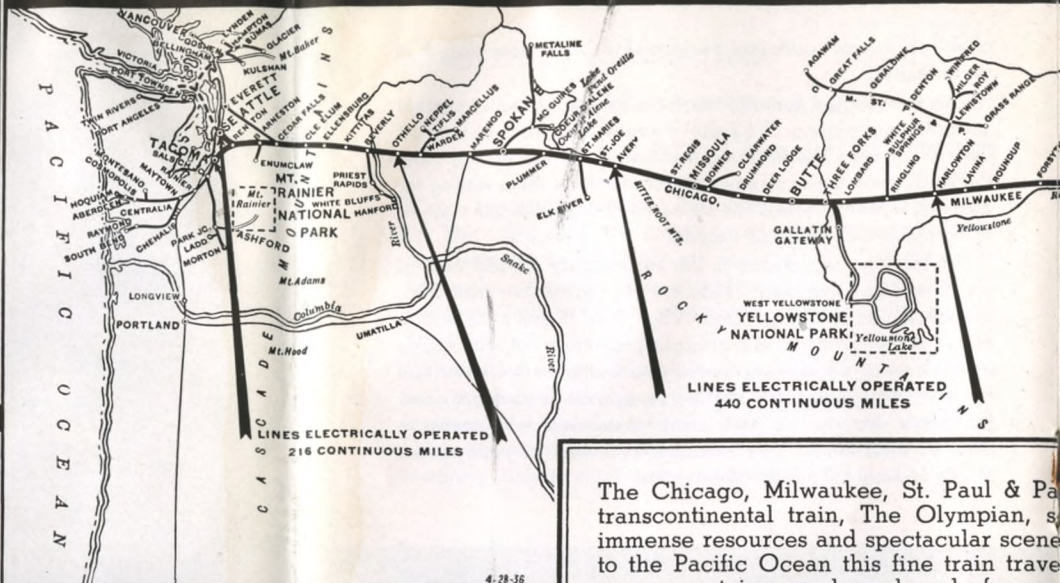
Leaving Eagle's Nest Tunnel.



The Gateway, Montana Canyon.

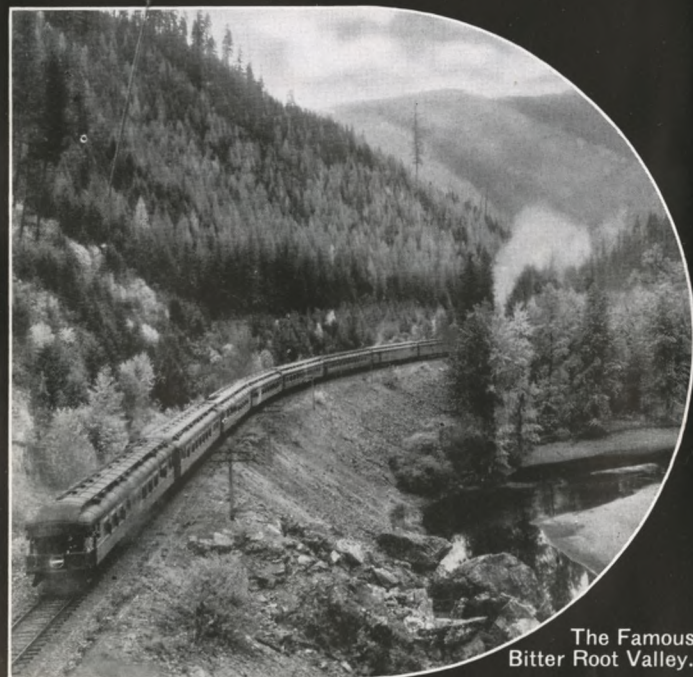


A Winding Descent of the Bitter Root Mountains.

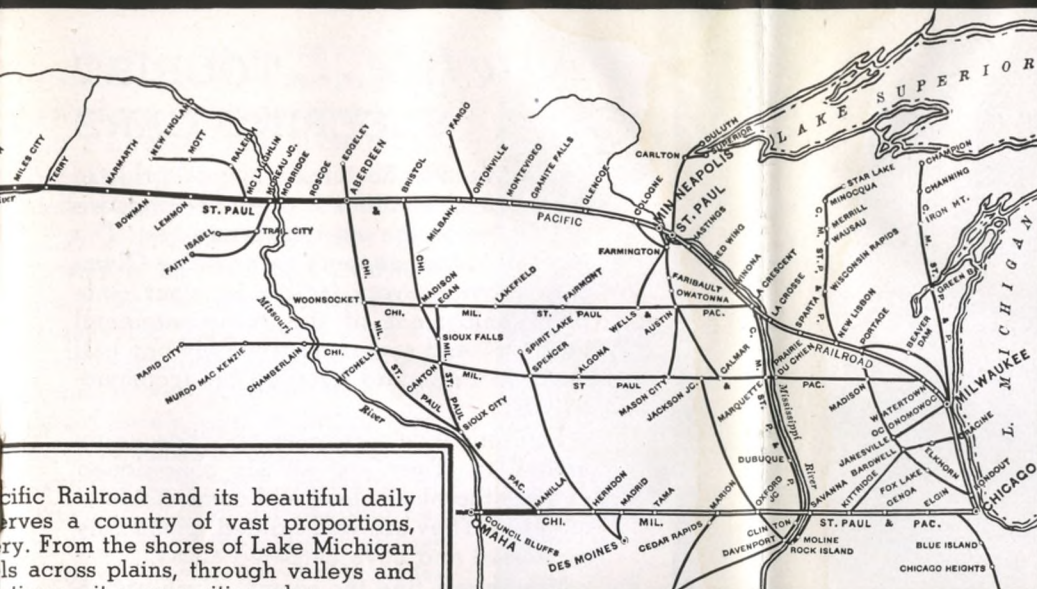


The Chicago, Milwaukee, St. Paul & Pacific transcontinental train, The Olympian, savoring the immense resources and spectacular scenery to the Pacific Ocean this fine train travels over mountains you have heard of many have stood for Western progress since the great Pacific Northwest!

When you visit this most amazing region of all transcontinental trains, over the scenic route, scenically supreme—The famous

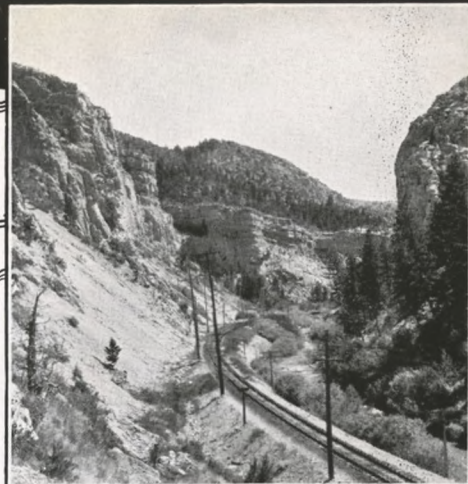


The Famous Bitter Root Valley.

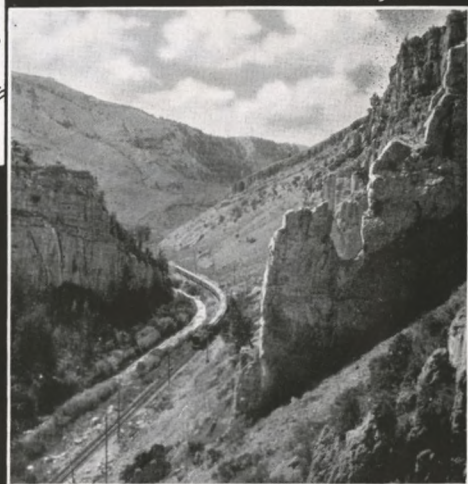


Specific Railroad and its beautiful daily
serves a country of vast proportions,
ry. From the shores of Lake Michigan
ls across plains, through valleys and
times—it serves cities whose names
e days of Indian warfare. This is the

of all America, make use of the finest
otless, cinderless, fumeless, electrified
Olympian!



In Montana Canyon.



Rock Walls Towering Heavenward.



The Olympian
in the Cascades.



Source of the Missouri River, near Three Forks.



Comfort and privacy at moderate cost in these modern tourist sleeping cars.

New type . . . TOURIST SLEEPING CARS

The Milwaukee Road takes special pride in the unusual facilities it offers for comfortable travel at the most moderate cost. The modern tourist sleeping cars on The Olympian provide every facility for your complete enjoyment of the transcontinental journey—and save approximately one-half the cost of standard sleeping car accommodations.

The tourist cars are new and thoroughly up-to-date. They are all air conditioned and are therefore clean and comfortable at all times. They are well lighted, pleasingly decorated and have carpeted aisles.

Passengers find the roomy, plush-upholstered seats exceptionally comfortable. The luxurious upper and lower berths have individually controlled lights while concealed floor lights illuminate the aisles. If you enjoy reading in bed, you will find it possible to do so with complete comfort in these cars.



The appointments of the men's and women's wash rooms are complete and ample.

The men's and women's dressing rooms and lounges are large and afford ample toilet facilities as well as a comfortable place to loaf, smoke and get acquainted with fellow passengers.

A courteous Milwaukee Road porter is on duty at all times in each car. He provides snow white sheets and pillow cases fresh and clean each night, sees that the wash room is well supplied with clean linen towels, and is always ready to do anything he can for your comfort and enjoyment. In short, you will find that tourist sleeping cars give much of the comfort and privacy of Pullman travel at considerably lower cost.

Tourist car passengers are cordially invited to use the diner on The Olympian where they will find a wide choice of excellent meals at moderate prices. Off-the-tray service at your seat if desired.

Tourist cars have porter service, too.



Berths are roomy, comfortable and individually lighted.



Convenient
Off-the-Tray
Service at your seat.

Coach passengers
may dine at
their seats.



Luggage racks
are bigger and
easier to reach.

L U X U R Y C O A C H E S

The special type coaches developed and used exclusively by The Milwaukee Road afford the coach passenger a new degree of spaciousness, comfort and beauty. They are all air conditioned, stream styled outside and luxury-lined inside. Silence and riding comfort are assured by the use of roller bearings, rubber-mounted trucks and insulated walls.

These unique coaches actually offer one-third more room per passenger. They are fitted with overstuffed, adjustable, reclining seats; club-like men's smoking room and women's lounge. The decorative scheme is as attractive as it is unusual. There are three-phased lighting, water cooler, porter service, sanitary towels, and hot and cold water. Dining car facilities are available, or you may use the special off-the-tray service at your seat. Nothing is lacking for a clean, restful, comfortable trip.

The smartly-fitted women's lounge is complete in every detail.





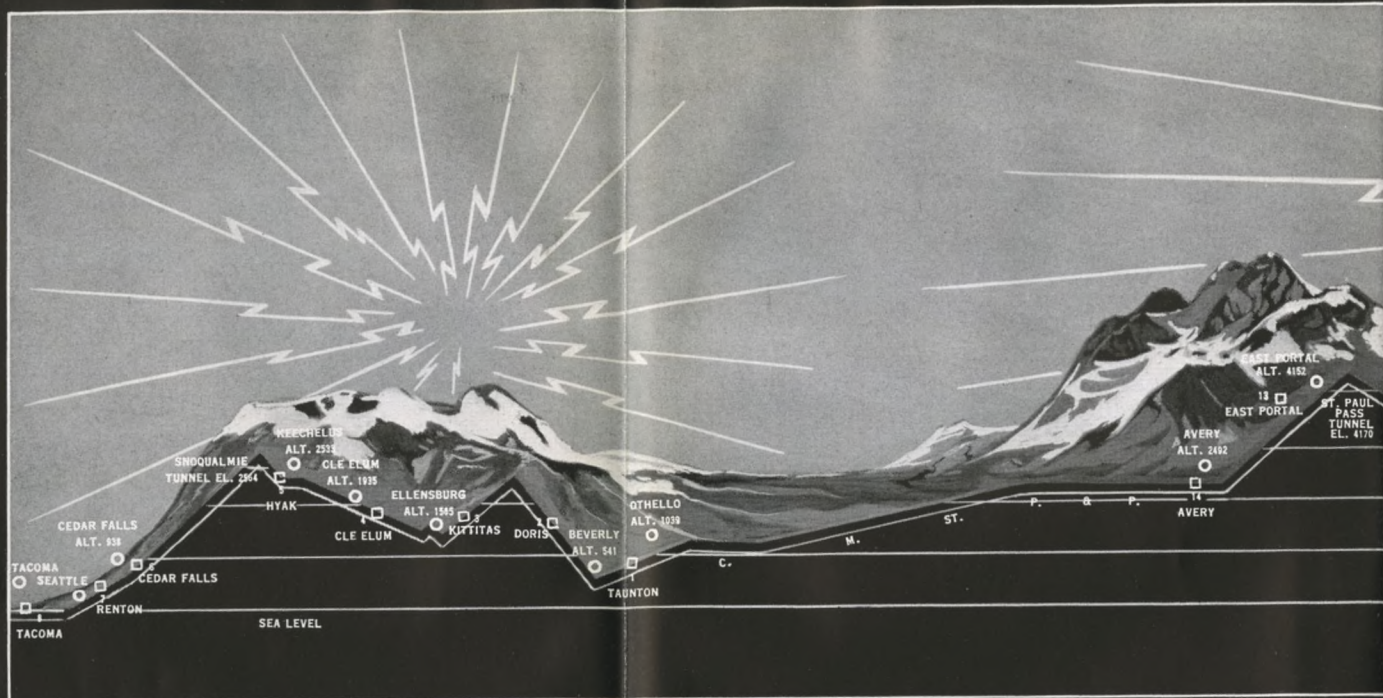
Individually-controlled reclining seats are thoroughly comfortable—even for a nap.



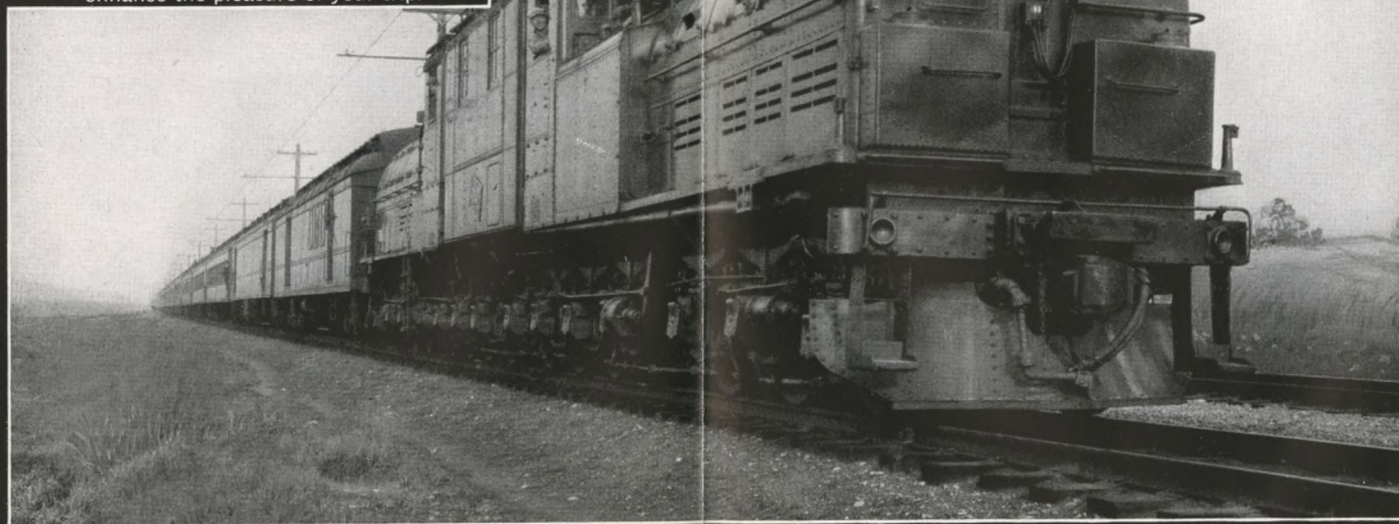
The water cooler and filter is conveniently at hand.

Plenty of comfortable seats in the roomy men's lounge.





Open observation cars
enhance the pleasure of your trip.



The big, bi-polar type electric locomotives climb easily over the Cascade Mountains.



Electrified over the Mountains

Framed by your car window as you pass through the mountains are countless rushing streams that tumble down the rocky inclines in a foaming race of white water. And these very streams provide the power that sends your train smoothly and silently along.

At 22 sub-stations scattered along the main line of The Milwaukee Road through the Belt, Rocky, Bitter Root and Cascade ranges, this water power is converted into direct current of 3,000 volts, and carried by feeder wires to the trolley above the tracks.

To the passenger, this electrification is much more than an engineering marvel—it is the means of providing 656 miles of the cleanest, smoothest, most delightful travel in the world. Jolts, jars and sidesway are eliminated. It is a big share of the nation's total railroad electrification—nine times as much transcontinental mileage as all other railroads combined.



One of the Hydro-Electric Power Stations.



Quill-type electric locomotives are used in the Belt, Rocky and Bitter Root Mountains.



TRAVEL SPECIALISTS at your Command

• • •

Wherever you're going, whatever the nature of your travel — extended tour or short business trip, you'll find helpful, often money-saving information at The Milwaukee Road's Travel Bureaus maintained in many of the principal cities, where detailed information may be obtained. Our travel experts through years of experience in the preparation of itineraries and planning of tours aim to seek out the best in the many details that enter into travel. No tour is complete unless it includes a trip over The Milwaukee Road — America's Longest Electrified Railroad.

ABERDEEN, SO. DAK.	Milwaukee Station
ATLANTA, GA.	717 Healey Bldg.
BOSTON, MASS.	510 Old South Bldg.
BUFFALO, N. Y.	206 Ellicott Square Bldg.
BUTTE, MONT.	33 West Park Street
CEDAR RAPIDS, IA.	Milwaukee Station
CHICAGO, ILL.	100 West Monroe Bldg. or 179 West Jackson Blvd.
CINCINNATI, OHIO	204 Dixie Terminal Bldg.
CLEVELAND, OHIO	937 Union Trust Bldg.
DALLAS, TEXAS	1108 Allen Bldg.
DENVER, COLO.	217 Patterson Bldg.
DES MOINES, IA.	501 Locust Street
DETROIT, MICH.	806 Transportation Bldg.
DULUTH, MINN.	503 Alworth Bldg.
GREEN BAY, WIS.	Milwaukee Station
JANESVILLE, WIS.	Milwaukee Station
KANSAS CITY, MO.	817 Walnut Street
LA CROSSE, WIS.	Milwaukee Station
LOS ANGELES, CALIF.	1024 Van Nuys Bldg.
MADISON, WIS.	Milwaukee Station
MASON CITY, IOWA	9th St. and So. Pennsylvania Ave.
MILWAUKEE, WIS.	701 North Water St.
MINNEAPOLIS, MINN.	700 Marquette Ave.
MISSOULA, MONT.	Higgins Ave. and 3rd Street
NEW ORLEANS, LA.	1522 Canal Bank Bldg.
NEW YORK, N. Y.	630 Fifth Ave.
OMAHA, NEB.	1611 Farnam Street
PHILADELPHIA, PA.	123 South Broad Street
PITTSBURGH, PA.	1122 Gulf Bldg.
PORTLAND, ORE.	532 S. W. Yamhill Street
ST. LOUIS, MO.	2003 Railway Exchange Bldg.
ST. PAUL, MINN.	365 Robert Street
SALT LAKE CITY, UTAH.	503 Utah Oil Bldg.
SAN FRANCISCO, CALIF.	661 Market Street
SEATTLE, WASH.	4th Ave. and Union Street
SIOUX CITY, IOWA	518 Nebraska Street
SIOUX FALLS, S. D.	Milwaukee Station
SPOKANE, WASH.	Sprague Ave. and Post Street
TACOMA, WASH.	112 South Ninth Street
TULSA, OKLA.	925 Kennedy Bldg.
VANCOUVER, B. C.	793 Granville Street
VICTORIA, B. C.	902 Government Street
WINNIPEG, MAN.	1105 McArthur Bldg.

• • •

GEO. B. HAYNES
Passenger Traffic Manager

W. B. DIXON
General Passenger Agent

CHICAGO

Cuneo Press, Chicago, Ill.

The MILWAUKEE Road