



CHICAGO
MILWAUKEE
ST. PAUL
AND PACIFIC

Vacation Suggestions
PACIFIC NORTHWEST

America's Greatest Vacationland

Snow-clad mountains, National Parks, National Forests, wild animals, glaciers, guest ranches, Indians, Pacific ocean beaches, lakes, big timber—endless attractions in the spectacular Northwest Wonderland.



YELLOWSTONE— UTAH—COLORADO

Yellowstone via The Milwaukee Road's Gallatin Gateway, newest, most thrilling Park entrance; Salt Lake City, Royal Gorge, Colorado Springs, Denver. Pages 12, 13, 22, 23, 26, 27.



INLAND EMPIRE

including the lovely lake regions of Spokane and Northern Idaho, Spokane Falls, The Shadowy St. Joe

River, Hayden Lake, Lake Coeur d'Alene. Pages 20, 21, 24, 25.



PUGET SOUND COUNTRY

Mt. Rainier National Park, Olympic Peninsula, Mt. Baker National Forest,

The Cascade Mountains and the San Juan Islands. Pages 10, 11, 14, 15, 16, 17, 20, 21.



A L A S K A

The land of vast glaciers, spectacular fjords, Indians, totem poles, the "midnight sun," gold rush memories;

a wonderful cruise over protected waters; calls at ports of adventure. Pages 28 and 29.



CALIFORNIA— GRAND CANYON

via Seattle, Tacoma, Portland, the Columbia River Drive, San Francisco, Los Angeles—all the scenic Pacific coast. Pages 14, 15, (Portland, Pages 20 and 21).



C A N A D A

via Seattle, Mt. Rainier National Park, and Puget Sound; Victoria—"a bit of Old England," Vancouver,

B. C., The Canadian Rockies, Lake Louise, Banff. Pages 10, 11, 21.



ESCORTED TOURS

Travel with congenial companions; everything arranged for; no travel worries; experienced couriers; via The Milwaukee Road and through the Northwest Wonderland. Pages 34 and 35.



GUEST RANCHES— SPORTSMAN'S PARADISE

Montana, Idaho, Washington, The Olympic Peninsula, "Ranching," Fishing, Hunting, Exploring. Pages 30, 31, 32, 33.



How best to plan your vacation trip... and get the most for your time and money

IN the succeeding pages are detailed descriptions of Vacation Tours to many sections of The Milwaukee Road's romantic Northwest and to other picturesque recreation spots in the West and Southwest and the Canadian Northwest.

These "Vacation Suggestions" are varied in character and appeal, designed to meet divergent tastes and pocketbooks, but in each instance they are planned for a maximum of pleasure and recreation. However, space permits mention only of the most outstanding attractions on these tours, which are chock full of carefully selected sight-seeing and entertainment.

The costs given are approximate. And, for the first time, we have made up costs for three kinds of tours (1) Standard Pullman (2) Tourist Sleeping Car (3) Coach. With improved equipment, air conditioning, fast schedules and fares graduated according to the kind of accommodations you travel in, a new era of travel by train is opening. This era is in keeping with the new desire for recreation through travel at sensible prices, suited to the purse of the individual. Nowadays you don't have to go de luxe—in special train, private car or yacht to see America. You can enjoy yourself in a coach as well as in a compartment or drawing room.

The Chicago World's Fair, attended with enjoyment by people from every walk of life, taught Americans that they did not have to be wealthy to go places and see things. And, to millions, travel by train proved to be the carefree, economical, popular way.

Our prices allow for all ordinary expenses and you can safely set up your vacation budget using the costs quoted. Personal or small incidental expenses will vary with the individual, but we feel that our estimate will cover those of the average person. It is possible, of course, that none of the suggestions listed herein is in accord with your ideas. To provide for such contingencies, The Milwaukee Road offers personalized Vacation Trips, fitted to the individual's wishes and to the time and money at his command. Simply tell one of the Travel Bureaus, listed on page 36, what you have in mind, the extent of your leisure and funds, and you will be given specially prepared itineraries in keeping with your thoughts and covering all necessary expenses.

For those who prefer traveling on the *personally escorted all-expense* plan, we have a variety of economically priced tours, briefly described on pages 34 and 35, of varying lengths covering similar territories and leaving Chicago on certain dates throughout the summer season.

Whether you choose from these "Vacation Suggestions" or have your tour fashioned to your own plans, you can rest assured that your trip will include the greatest dollar-for-dollar value in thrills and pleasure you've ever had. The Milwaukee Road Travel Specialists know the West and can advise you how to get the most for your money. Take advantage of their skill and experience and let them be your travel counsellors.

The Famous OLYMPIAN

Flagship of a famous fleet of Milwaukee Road trains, the silent roller bearing Olympian represents the highest development of modern rail travel. Rolling swiftly and smoothly on its boulevard of steel, it is the counterpart, on land, of the mighty liners that bridge the Atlantic and Pacific Oceans. The Olympian caters as completely to your comfort, is as luxuriously appointed and offers its traditional hospitality. You may even secure three kinds of tickets (Standard, Tourist Sleeping Car or Coach) so that your tour accommodations may be in keeping with your taste and purse.

The semi-enclosed sections in standard sleeping cars give rest and privacy by day.



● EVERY CAR AIR CONDITIONED

Beginning this summer, every car in The Olympian will be air conditioned and automatically ventilated by the most modern methods. No matter how hot it may be in the daytime, or how chilly the mountain nights, you will travel in complete comfort in clean, draught-free air that is regulated exactly to the temperature and humidity you prefer. Thus, regardless of the weather outdoors, you will always be comfortable on The Olympian and your trip through the Northwest Wonderland will be one of the most restful and enjoyable parts of your vacation.

The radio provides entertainment in the observation car—or you can catch up on your correspondence at the writing desk. Tea is served here every afternoon.





You'll welcome the notes of the chimes that call you to the dining car on The Olympian.

● COMPLETELY APPOINTED

From coil spring mattresses to barber shop and valet service, nothing has been overlooked that could contribute to the enjoyment of your tour aboard The Olympian. You will find the standard sleeping cars with compartments and drawing-rooms, observation and club cars all

The club section of the observation car where a touch of the bell brings prompt, smiling service.



luxuriously appointed and tastefully decorated throughout. In the observation car is a library of books and current magazines; a daily news bulletin and radio. An open observation car is carried through scenic mountain sections. Milwaukee Road meals, by the way, are justly famous among discriminating travelers, further reference to them may be found in succeeding pages. You will find them not only delightfully prepared and served, but very moderate in price.

Special features of the accommodations available to Pullman passengers on The Olympian are ample lounge and smoking facilities for both men and women, shower baths, valet service, library, soda fountain, buffet service and four o'clock tea each afternoon in the observation car.

New Type Tourist Sleeping Cars



Snug comfort in roomy, individually lighted berths; fresh, snowy linen every day; aisle illumination; sleep as soundly as in your own bed.

floor lights illuminate the aisles. The commodious men's and women's dressing rooms and lounges afford ample toilet facilities as well as a place to loaf and smoke.

Snow white sheets and pillow cases are provided fresh and clean each night while a supply of clean linen towels is always on hand in the wash-rooms. There is porter service at all times.

Tourist car passengers are cordially invited to use the diner on The Olympian. Excellent meals are provided at unusually modest prices—club breakfasts from 50c, luncheons and dinners from 75c. The "Chef's Selection Plate" served at noon and night includes meat, vegetables, bread and butter and a beverage for only 50c. There is also a convenient off-the-tray service for those who wish to dine in their seats which provides sandwiches at 10c, pie 10c and coffee 5c.

In effect, tourist sleeping cars enable the passenger who is interested in economy to enjoy much of the comfort and privacy of Pullman travel at a much lower cost.

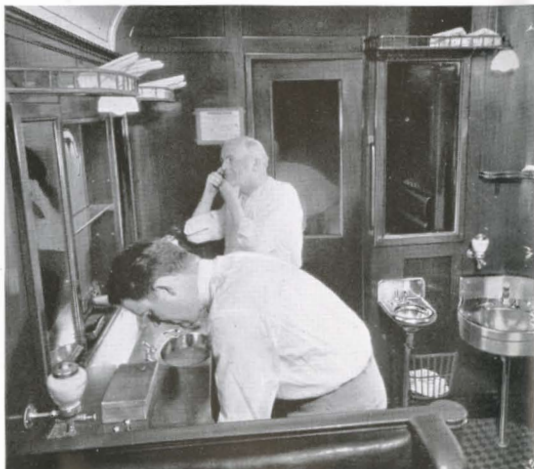
Here is the modern "cabin class" of rail travel. These comfortable sleeping cars make your transcontinental journey a restful, delightful interlude . . . and save approximately one-half the cost of standard sleeping car accommodations.

On The Olympian they are modern in every respect, air conditioned, well lighted, attractively decorated and with carpeted aisles. You will find the deep, plush-upholstered seats exceptionally comfortable. In addition to general illumination there are individually controlled lights in the roomy upper and lower berths while concealed

Commodious women's dressing room and lounge.



There's plenty of space in the men's smoking room.



Brand New Luxury Lounge Coaches



She'll have no trouble putting the doll to sleep—or sleeping herself—in the comfortable seats of this quiet coach. At left: The spacious women's lounge has a vanity and mirror as well as the porcelain lavatory and seats for five.



Streamlined outside and luxury-lined inside, these new type cars provide a degree of spaciousness, comfort and beauty never before enjoyed by coach passengers. They offer one-third more room per passenger; club-like men's smoking room and women's lounge; overstuffed, adjustable reclining seats, the backs individually lowered with hand levers; diffused lighting, and silence that results from the use of roller bearings, insulated walls and rubber mounted trucks. These new coaches are attractively decorated and like all other cars in The Olympian they are air conditioned. There is an electric water cooler, porter service, sanitary towels, and hot and cold water. Coach passengers may also avail themselves of the facilities of the dining car or the off-the-tray service described on the preceding page.



Above: Convenience as well as comfort is provided in men's room—seats for ten.

In circle: Coach passengers are invited to use the dining car. Meals from 50c up.



At right: Off-the-tray service at your seat in coaches and tourist sleeping cars.

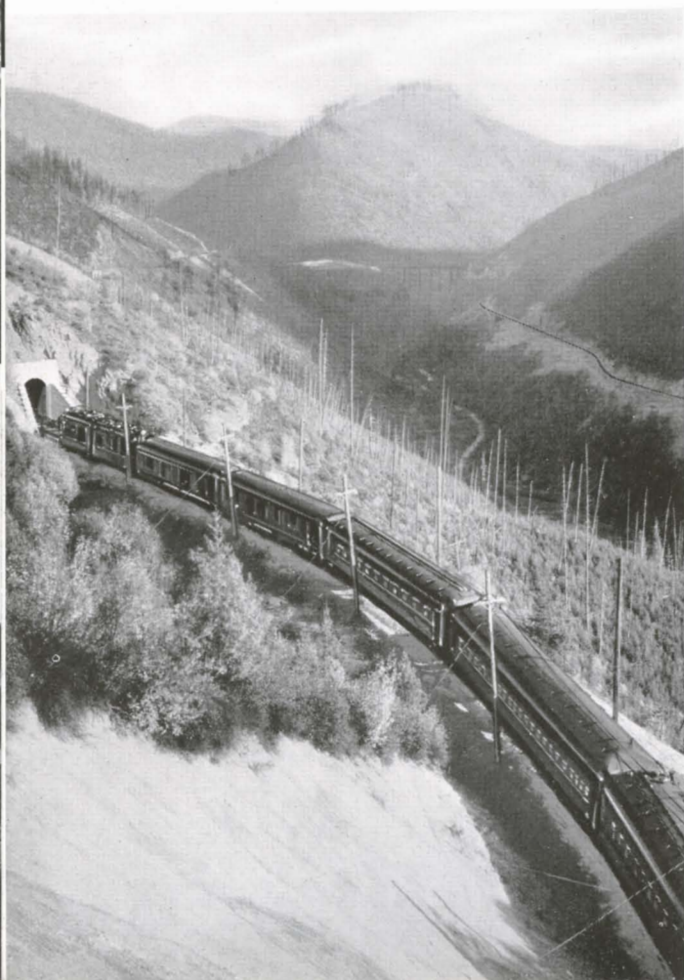


The Trail of The Olympian



Over the Continental Divide with electric power. Substations reduce the voltage from 100,000 to 3,000 and change it from A.C. to D.C. before sending it out over the trolleys.

Switchbacks over the Bitter Roots are a remarkable engineering achievement. The lower track level is visible in the distance.



● THE ROUTE INCOMPARABLE

There is infinite variety in the beauty of country traversed by The Olympian.

From Chicago and Milwaukee, the trail during the night swings north and westward to the broad valley of the Mississippi which it follows to the twin metropolis, St. Paul and Minneapolis.

Westward through the Great Plains Country of Minnesota and the Dakotas, the trail of The Olympian follows the route of Lewis and Clark . . . touches sections steeped in Indian lore . . . crosses the Missouri at Mobridge, South Dakota and penetrates at last to the mountain country of Montana.

From Harlowton on, the scenery becomes more rugged until Montana Canyon in the Big Belt mountains unfolds its magnificent panorama—strata upon strata of rock sculptured into grotesque shapes. Your train swings smoothly onward over the Continental Divide of the Rockies; climbs in a series of switchbacks, a marvel of engineering, up and then down the Bitter Roots; and follows the valley of the shadowy St. Joe River to Spokane.

Moving onward, The Olympian descends into the beautiful Kittitas valley within sight of Mt. Rainier. Soon begins the climb over the last—and perhaps the loveliest—of the ranges that bar the way to the Pacific Coast. Through Snoqualmie Tunnel and you emerge on the western side of the verdant Cascades and descend to Seattle and Tacoma.

Swiftly, smoothly and comfortably you have crossed the continent; the most important mountain ranges and picturesque rivers of the West, including the Mississippi, Missouri, Jefferson, Hell Gate, St. Joe, Spokane and Columbia.

You have seen forested mountains and bare, craggy wastes, geological phenomena, immense tracts of virgin timber, historic "bad lands," wealthy mining country, vast cattle ranches, farm lands and mile-high orchards. This is the way of The Olympian—the route incomparable—Electrified Over the Mountains to the Sea.



AMERICA'S LONGEST ELECTRIFIED RAILROAD

From Harlowton, Montana, over the Big Belts, Rockies and Bitter Roots to Avery, Idaho, and again from Othello, Washington, over the Saddle and Cascade mountains to Seattle-Tacoma, The Olympian is electrified for 656 miles. Nine times as much electrified mileage as all other transcontinental lines combined!

This great zone of electrification represents an engineering achievement that stands alone in the annals of railroading. Deep in the mountain fastnesses, many power stations harness the turbulent energy of rushing streams and convert it into electric power.

In the 440-mile section from Harlowton to Avery, The Olympian is drawn by Quill type locomotives as illustrated on the back cover, while in the 216-mile western section, the locomotives are of the Bi-Polar gearless type. On the down grades, these motors reverse their function and utilize the momentum of the heavy trains to re-generate electric power. In this way, about twelve per cent of the total power consumed is recovered.

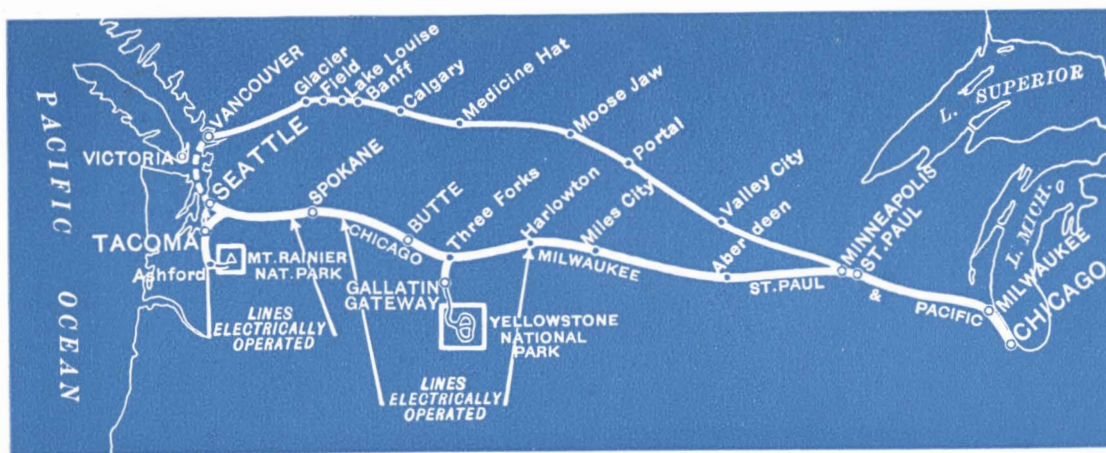
What does it all mean to the passenger? Simply this: that the electrified Olympian moves with almost unbelievable smoothness. There is a complete absence of jolting, jars, shock and side sway both in stopping and starting; no smoke, cinders or fumes. With the power and speed of an eagle the great train soars up and over the mountains.

Bi-Polar Gearless Type Locomotives speed The Olympian smoothly over the Cascade Mountains.



Insert: Open observation cars. No smoke, soot or cinders no acrid fumes in tunnels—thanks to electrification.

Tour Number 1



FIRST DAY—

All Aboard, Northwest Wonderland

The Milwaukee Road's new Olympian awaits you every evening at Union Station, Chicago. You'll find genuine hospitality on this de luxe "Queen of the Rails." Air conditioning in every car and smooth, silent roller bearings on every car assure you a pleasant, restful journey. Nothing has been overlooked to give your vacation a happy beginning.

SECOND DAY—Westward Ho!

Early risers may enjoy, between La Crosse and St. Paul, one hundred and forty miles of picturesque river scenery as The Olympian skirts the wide upper reaches of the Mississippi. Just after breakfast a short stop is made at St. Paul, the marble capitol building, that wonderful piece of architecture, being visible, and then your train crosses the Mississippi again on an immense trestle and brings you to Minneapolis. Leaving Minneapolis, you are on your westward way, over the prairies of Minnesota and Dakota, across the Missouri River and past picturesque Indian Reservations through a section known as the Great Plains Country. It is early evening when you cross the Missouri within sight of Ashley Island, where the Lewis and Clark expedition camped on October 8, 1804, among the Arickaree Indians. Plenty of restful enjoyment on board, and you don't care whether the winds from the Dakota "Bad Lands" blow hot or cold—thanks to air conditioning.

THIRD DAY—Electrified Travel

Early today, at Harlowton, Mont., a giant electric locomotive takes charge of your train, and presently you cross the rugged Big Belt mountains. An outstanding piece of railroad engineering enables you to enjoy the charming ride that follows through the castellated corridors of magnificent Montana Canyon to the historic Three Forks of the Missouri. It is at the town of Three Forks that passengers bound for Yellowstone National Park leave the main line and travel southward to Gallatin Gateway, The Milwaukee Road's scenic entrance to the Park. This side trip is described on pages 26 and 27. Continuing westward, powered by energy from tumbling snow-fed streams, you follow the Canyon of the Jefferson River, cross the Continental Divide and enjoy a day of sootless, cinderless, *electrified* travel amid magnificent mountain scenes of the Rockies. A short stop is made at Butte, world-famous mining city. As the afternoon draws to a close the climax of the second day's trip is reached with the

crossing of the Bitter Root Mountains. Here spectacular scenic effects and the engineering feats accomplished in conquering this magnificent section vie for your attention. A stop at Spokane enables the passenger to take a short stroll before retiring.

FOURTH DAY—Vacation Headquarters

After registering at the hotel, a day of interesting sight-seeing by land or sea awaits you. In Seattle, there's a visit to the colorful markets, to the waterfront flying the flags of all nations, and a tour of the city—parks, boulevards, Lakes Washington and Union, the wonderful ship canal, perhaps to the Navy Yard.

FIFTH DAY—Mt. Rainier National Park

Leave Seattle by motor coach following National Park Highway through vast forests and flowering meadows, past Longmire Springs and Nisqually Glacier to Paradise Valley. Horseback trips along skyline trails; hiking to snowfields and glaciers on the ice-sheathed monarch of mountains occupy the afternoon. In the evening there is always some activity that sends you to bed, tired after a thrill-filled day, but happy.

SIXTH DAY—Good bye, Rainier!

The morning passes quickly enjoying Winter sports. Alpine costumes, equipment and guides are procurable for a small sum. Prices generally are reasonable and meals may be had in the restaurant or the cafeteria. You leave Paradise Valley in midafternoon, arriving Seattle for dinner and night at your hotel.

SEVENTH DAY—Hello, Canada!

Leave Seattle in the morning for a cruise up Puget Sound, among the wooded San Juan Islands to Victoria, B. C., on Vancouver Island. Our steamer is one of the Canadian Pacific Princess liners—a trim, smaller sized edition of one of that company's great Trans-Pacific steamers. Shortly after noon you dock at Victoria—"a bit of old England" that is sometimes said to be more British than the British Isles themselves. The afternoon and evening may be spent in city sight-seeing. There is the Parliament House, the huge dry docks; or trips to nearby points such as Butchart's Gardens or the Observatory. For dinner a mutton chop or that delightful, economical and strictly English dish, "fish and chips." In the sea air of this maritime city you'll sleep the sleep of the just.

EIGHTH DAY—Cosmopolitan Vancouver

Again shortly after lunch, we board our yacht-like steamer for Vancouver enjoying the relaxation of our



deck chairs, playing shuffle board or just enjoying the beauty of the Georgian Straits. We arrive at Vancouver, the leading city of Western Canada, in early evening and have a chance to see something of this cosmopolitan city before bedtime.

NINTH DAY—Turning Eastward

The morning may be devoted to sight-seeing in this picturesque metropolis of British Columbia. Various tours are available: Stanley Park, Marine Drive, The Beaches, Capilano Canyon, the Oriental section with its colorful Hindu and Chinese quarters. In midafternoon we leave Vancouver bound for lovely Lake Louise.

TENTH DAY—Lovely Lake Louise

A memorable morning trip through the awe-inspiring Canadian Rockies. Brief stops at Glacier and Field, under gigantic snow-peaks. Arriving at Lake Louise for luncheon, you have a full afternoon to enjoy the charm and beauty of this most beautiful of mountain lakes. Hike along its wooded shores; row on its crystal clear, sky blue waters to the foot of Victoria Glacier; ride or motor to nearby scenic vantage points; swim in the pool bordering the Lake. Evening and over night at charming Chateau Lake Louise or rustic Deer Lodge.

ELEVENTH DAY—Beautiful Banff

A morning at Lake Louise; then, after lunch, by motor or train to Banff Hot Springs and a round of sight-seeing. Banff is gay of a summer evening and you'll find plenty to do not far from your hotel.

TWELFTH DAY—Au Revoir, Rockies

A morning full of swimming, boating, golf, tennis, sight-seeing on foot, or horseback or by motor—take your choice. In Banff as elsewhere on this tour you may suit your fancy and your pocketbook. In the afternoon you board your train, homeward bound.

THIRTEENTH DAY—Through Canada

Down from the Rockies and over the fertile prairies of Alberta, Saskatchewan and Manitoba. You re-enter the United States through Portal, N. D.

FOURTEENTH DAY—Home Stretch

At the Twin Cities, you transfer to The Milwaukee Road for a charming day trip through the scenic Upper Mississippi Valley, Wisconsin's picturesque lake lands, past the beautiful Dells of the Wisconsin River. Reach Chicago, Union Station same evening, concluding a tour that will be an outstanding memory.



Guides on Mt. Rainier with a giant Swiss Alpine horn.

TOUR NUMBER 1

WORLD'S LONGEST CONTINUOUS ELECTRIFIED RIDE OVER FOUR GREAT MOUNTAIN RANGES—PACIFIC NORTH COAST—MT. RAINIER NATIONAL PARK—PUGET SOUND—BRITISH COLUMBIA—THE CANADIAN ROCKIES—LAKE LOUISE—BANFF.

*ESTIMATED COSTS

From Chicago

	Standard Sleeper	Tourist Sleeper	Coach
Round trip rail fare	\$ 86.00	\$ 68.80	\$ 57.35
Lower Berth	30.00	15.75
Meals, transfers, hotels, sight-seeing	99.75	69.25	56.10
	<u>\$215.75</u>	<u>\$153.80</u>	<u>\$113.45</u>

Covering nearly five thousand miles in two countries; traveling by railroad, motor and steamer, this tour is unequalled for scenic grandeur on the North American Continent. Seven nights at hotels or lodges; six nights on board trains. The standard and tourist prices quoted above will be decreased per passenger in the event two occupy a lower berth or one occupies an upper. Hotel rates are based on one to a room so that in the case of standard, tourist or coach passengers the price will be slightly less if there are two to a room.

*COSTS FROM OTHER CITIES—The costs of this tour from points east and south of Chicago increase as rail fares, sleeping car rates and incidental expenses become higher; from points west of Chicago rail fares, sleeping car rates and incidentals decrease.

Our representatives can tell you what has been allowed for your meals, what hotels you can stop at, what sight-seeing may be included to keep within your vacation budget and approximately what it will cost and how long it will take from your home town.

The wooded San Juan Islands dot Puget Sound.





Yellowstone National Park

At historical Three Forks, Montana, confluence of the Gallatin, Jefferson and Madison rivers, the traveler to Yellowstone leaves the main electrified line of The Milwaukee Road and journeys by motor southward to mountain-cradled Gallatin Gateway Inn, on the threshold of Yellowstone Park. Here is the Recreation Headquarters of the Rocky Mountain vacation region in the very heart of the Guest Ranch country. From Gallatin Gateway Inn a thrilling 85 mile ride in comfortable motor coaches, through the spectacular Gallatin river valley and canyon, brings you to Yellowstone, largest of our national parks. The geyser basins alone are worth the trip to Yellowstone. Here, in a limited area, are more geysers than in all the rest of the world. Hundreds of them regularly stage their marvelous spectacle, shooting huge columns of boiling water, five to sixty feet in diameter, hundreds of feet in the air. Here "Old Faithful," the world's most perfect example of geyser phenomenon, sends its towering plume of water and steam into the air every sixty-five minutes. Akin to the geysers are the seething Paint Pots of Yellowstone—and the boiling, hot springs holding in solution minerals and algae which



You can almost set your watch by Old Faithful. Every 65 minutes it sends its column of water 120 to 170 feet into the air. The most celebrated geyser in the world.



Chinaman Pool does excellent wet wash.

impart rare and beautiful tints to the water. Mammoth Hot Springs offers a special phenomenon of its own. Gushing from the hillside, its mineral-charged waters have built up vast terraces of rock sculptured in every conceivable form and marvelously tinted by microscopic plant life.

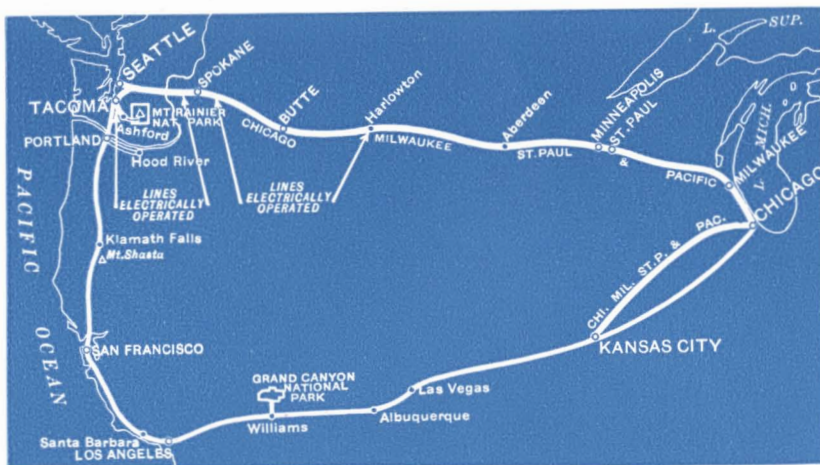
There is lovely Yellowstone Lake lying nearly eight thousand feet above sea level—the highest navigable body of water on the continent. From the north end of the lake, the Yellowstone River flows quietly away until it plunges downward over two precipices of 109 and 308 feet into its tremendous gorge and swirls away in its canyon 2000 feet wide and 1200 feet deep. Nothing in the world is comparable with the Grand Canyon of the Yellowstone for the overpowering splendor of its brilliant color and exquisite beauty.

Yellowstone is a vast game preserve abounding in friendly wild life. You will see bear and deer so tame that they will eat from your hand; and if you are alert you will see buffalo, elk, antelope, big horn sheep and mountain goats ranging the forests, mountains and plains.

Fishing, boating, swimming, motoring, hiking, horseback riding and mountain climbing all can be enjoyed in Yellowstone. You'll revel in the pure, keen air; in the warmth of the sunny days and the coolness of mountain nights; in that feeling of the "Old West"—the intangible thing called "atmosphere" in which Yellowstone abounds.

On page 26 you will find a map of the route through Yellowstone, also a further description of the Gallatin Gateway to the Park and the motor transportation, hotel and lodges in the Park.

Tour Number 2



FIRST, SECOND, THIRD, FOURTH AND FIFTH DAYS ARE DESCRIBED UNDER TOUR NUMBER 1, PAGES 10 AND 11.

SIXTH DAY—Seeing Tacoma

After breakfast we leave Mt. Rainier National Park for Tacoma, arriving there in time for lunch. The afternoon may be spent in sight-seeing. Tacoma is located on Commencement Bay, a large inlet of Puget Sound and the waterfront and deep water harbor of this World Port contain much of interest. Tacoma is a city of attractive residences, modern schools and beautiful parks. Because Tacoma leads in the manufacture of forest products, it is known as the "Lumber Capital of America." You leave Tacoma in the early evening and arrive Portland in time to get settled at your hotel and enjoy a full night's sleep.

SEVENTH DAY—Columbia River

An early breakfast, then a day of outstanding adventure seeing this beautiful city from which three snow-capped peaks are visible, motoring along the world-renowned Columbia River Highway. Towering cliffs, splendid waterfalls—Multnomah, Latourell, Horsetail—salmon fishing, Indians, beautiful Mt. Hood. You will agree that this drive is incomparable. Depart same evening for San Francisco.

EIGHTH DAY—Past Mt. Shasta

A restful day of superbly scenic travel along the base of great mountains, through rugged canyons. Grand Mt. Shasta, with its snowy head in the clouds, is in view many hours and the train passes through Shasta Springs, noted for its mineral water. Later in the day your route is through Sacramento to Benicia where your cars are ferried across Carquinez Straits on the largest car ferries in the world. You arrive San Francisco early in evening. Night at hotel.

NINTH DAY—Delightful San Francisco

San Francisco is a city with a personality, a place of unending interest. Your sight-seeing may include the magnificent bay district—ships from the Seven Seas; the Presidio, Telegraph Hill, beautiful Golden Gate Park, Cliff House and Twin Peaks with its panorama of the entire city. Evening brings a visit to mysterious Chinatown, with its strange Oriental bazaars, cafes and theatres.

TENTH DAY—Down the Golden Coast

Leave San Francisco in the morning. Four hundred and seventy-five miles of interesting sights. Charming suburban cities, fabulously fertile valleys, orchards, Summerland where you see oil being pumped from beneath the ocean bed, Missions, Monterey Bay, the Coast Range, enchanting Santa Barbara—along the Pacific shore to Los Angeles. Night at hotel.

ELEVENTH DAY—Magic Los Angeles

After breakfast, a motor coach tour over Los Angeles boulevards through palatial residence districts to Hollywood, capital of "moviedom," Beverly Hills, home of noted film stars, past great oil fields to the gay beach cities—Santa Monica and Venice. In the evening, a visit to one of the magnificent photoplay theatres.

TWELFTH DAY—The Orange Groves

Forenoon sight-seeing in Los Angeles. Leave at noon passing through orange groves, then the Sierra Madre Mountains on your way to the earth's grandest spectacle.

THIRTEENTH DAY—Grand Canyon

Breakfast, then a day all too short to comprehend the overwhelming grandeur, the bewildering beauty and the gorgeous colors of the most sublime sight on the globe. A motor tour may be taken to outstanding viewpoints on Grand Canyon's rim. You may have circled the world itself in search of something out of the ordinary. Here it is in your own land. To the scientist, the Canyon offers a bird's-eye view of the earth's strata and a wealth of specimens; to the naturalist, the plant life of half a continent within the space of half a dozen miles; to the artist, the multi-colored lines of its million acres; to the sensation seeker, the thrills of zig-zagging trails; to the average man or woman on vacation bent, an event never to be eclipsed. Night in sleeping car, or in hotel at Williams, Ariz.

FOURTEENTH DAY—New Mexico

Colorful mesas, lofty mountains and Indian communities diversify this day of restful travel. Brief stops at historic Albuquerque and Las Vegas.



FIFTEENTH DAY—Kansas City

Following the Santa Fe trail across Kansas to Kansas City, Mo. Here passengers holding standard sleeping car or coach tickets board The Milwaukee Road's famous SOUTHWEST LIMITED for Chicago.

SIXTEENTH DAY—Home

Arrive in the morning at Chicago.

TOUR NUMBER 2

AMERICA'S LONGEST ELECTRIFIED RAILROAD—FOUR GREAT MOUNTAIN RANGES—PUGET SOUND—MT. RAINIER NATIONAL PARK—COLUMBIA RIVER DRIVE—CALIFORNIA—THE GRAND CANYON.

*ESTIMATED COSTS

From Chicago

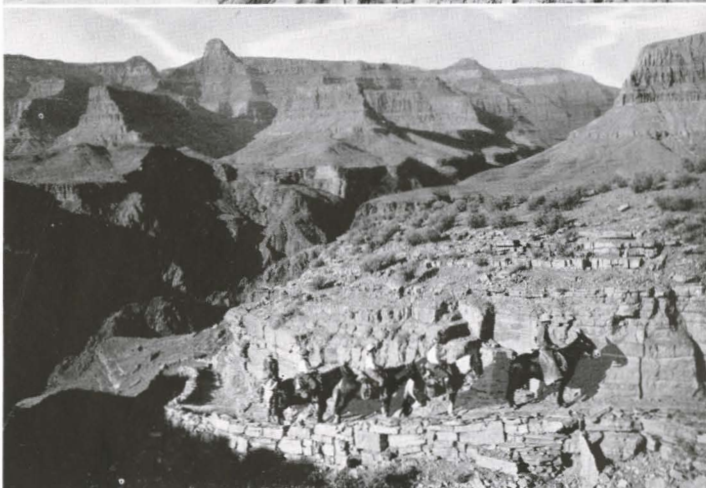
	Standard Sleeper	Tourist Sleeper	Coach
Round trip rail fare	\$86.00	\$68.80	\$57.35
Lower berth	41.75	20.50
Meals, transfers, hotels, sight-seeing	87.75	68.00	54.65
	\$215.50	\$157.30	\$112.00

On this tour you see the Pacific Coast. You travel nearly six thousand miles in sixteen states and, in addition to the scenic high spots and National Parks, visit Seattle, Tacoma, Portland, San Francisco and Los Angeles.

Those traveling in standard sleeping cars have seven nights in hotels and eight on board trains while those traveling "tourist" or "coach" have seven nights on trains and eight in hotels.

The standard and tourist prices quoted above will be decreased per passenger in the event two occupy a lower berth or one occupies an upper. Hotel rates are based on one to a room so that in the case of standard, tourist or coach passengers the price will be slightly less if there are two to a room.

The Columbia River Highway near Portland. A niche cut in the side of towering palisades.



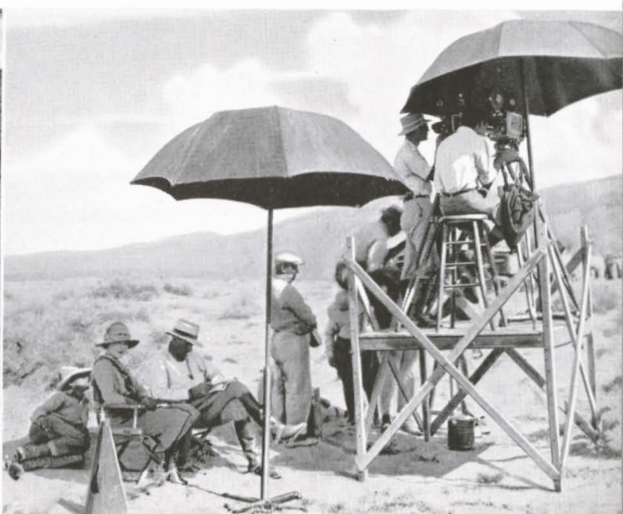
Top: The Pacific Ocean with its golden strand, the Highway and the Mountains at Santa Monica, California.

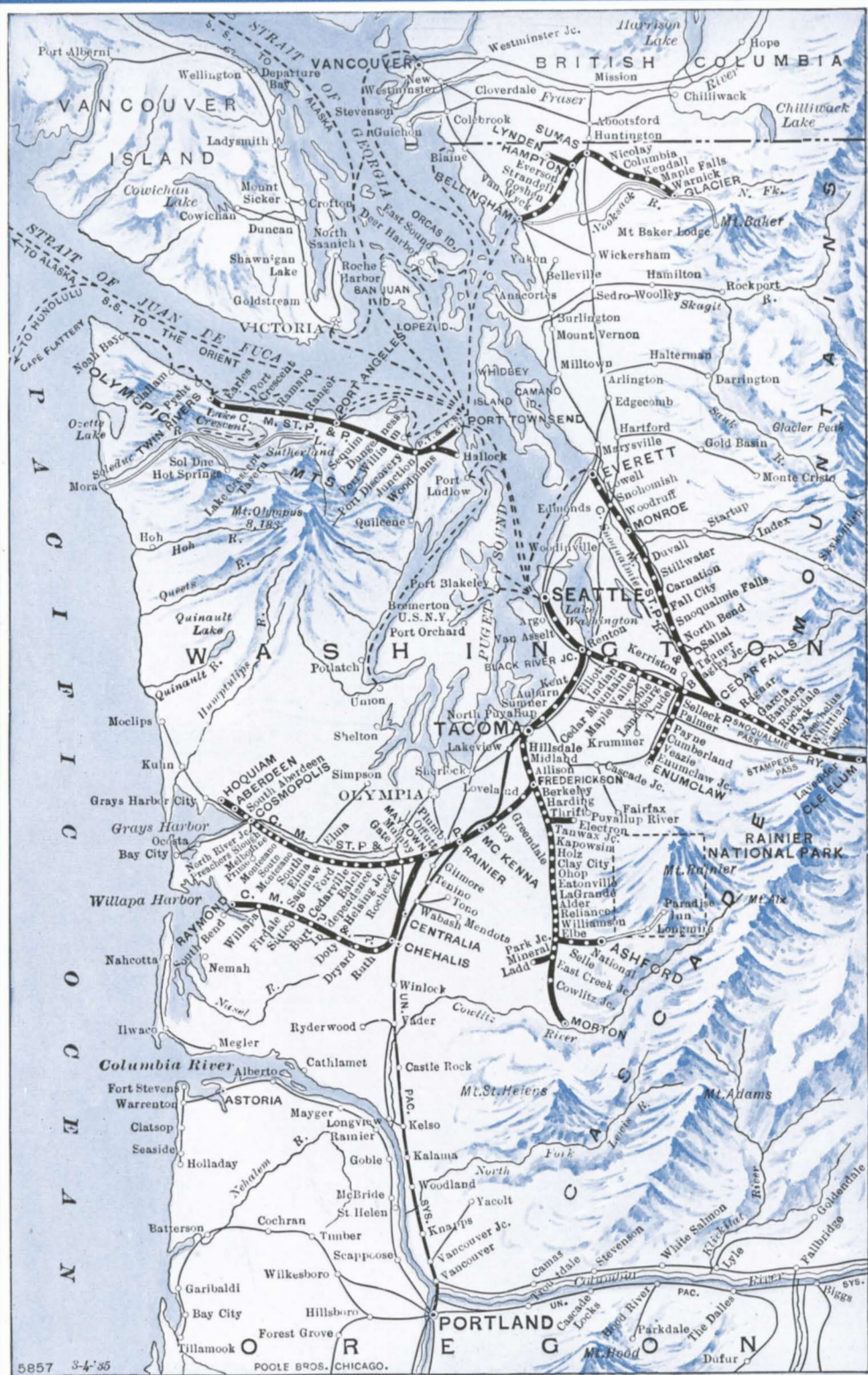
Below: Trail Riders in the Grand Canyon enjoying a scenic spectacle that no artist has ever been able to paint.

***COSTS FROM OTHER CITIES**—The costs of this tour from points east and south of Chicago increase as rail fares, sleeping car rates and incidental expenses become higher; from points west of Chicago rail fares, sleeping car rates and incidentals decrease.

Our representatives can tell what has been allowed for meals, what hotels you may stop at, what sight-seeing may be included to keep within your budget and approximately what it will cost and how long it will take from your home town.

On location—a movie company shoots a scene in the desert country of Southern California.





The Puget Sound Country

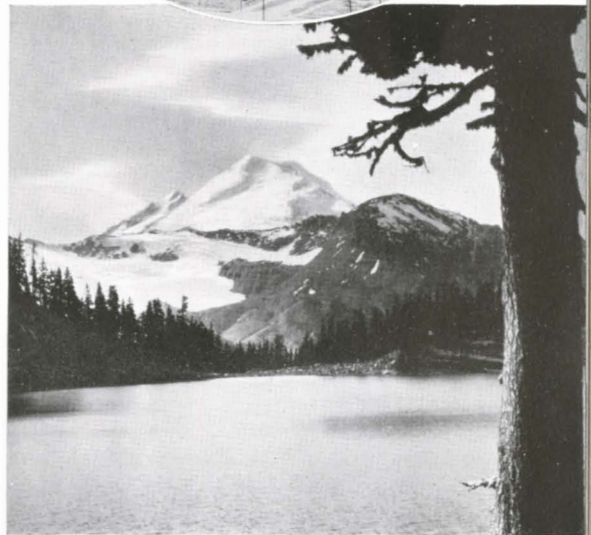
This is the "charmed land"—the evergreen playground! Centering around the modern cities of Seattle and Tacoma, the Puget Sound Country is an inexhaustible storeroom of varied vacation pleasures. The Sound itself is a perfect setting for delightful cruises that may continue interminably—among the picturesque San Juan Islands and on through the Straits of Juan de Fuca to the Orient and the South Seas . . . northward to Victoria and Vancouver . . . up through the "inside passage" past rugged coasts and fjords to Alaska, land of the midnight sun, of Indians and totem poles, of "gold rush" memories.

Across Puget Sound, but a few hours from Seattle by boat, is the wilderness paradise of the Olympic Peninsula, a vast area of virgin timber; of sparkling lakes nestling high in the snow-peaked Olympics; of crystal streams rushing to the Pacific. Comfortable resorts, exploring by pack train, shooting the rapids in dugout canoes, Indian ceremonials, swimming on Pacific Ocean beaches, trout fishing and big game hunting are at their best in this "last frontier" of the old West.

Southeast of Seattle and east of Tacoma, within easy reach in comfortable motor coaches, is Mt. Rainier National Park—America's Switzerland. You can rent "Alpine costumes" at a nominal price; go tobogganing or skiing in midsummer on great snow fields; hike with Park guides on living glaciers; wander knee-deep in the flower-carpeted Alpine meadows of Paradise Valley, or make the strenuous ascent to Columbia Crest nearly three miles up.

A few hours north of Seattle, en route to Vancouver by rail, is Bellingham. From here, a thrilling motor highway leads to snow-clad Mt. Baker in the center of the 75,000 acre Mt. Baker Recreational Area. This region includes Mt. Shuksan and the lake-dotted Heather

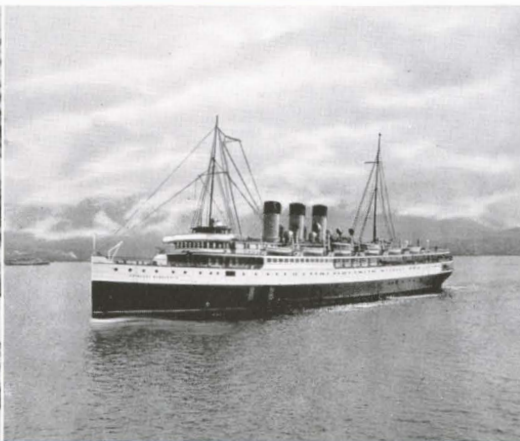
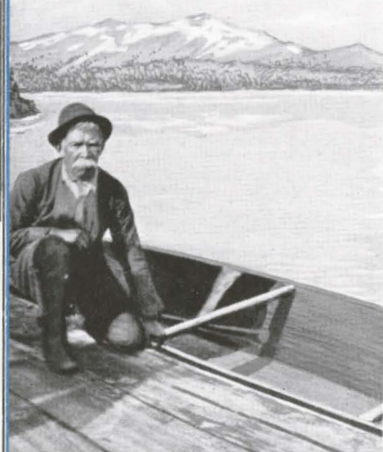
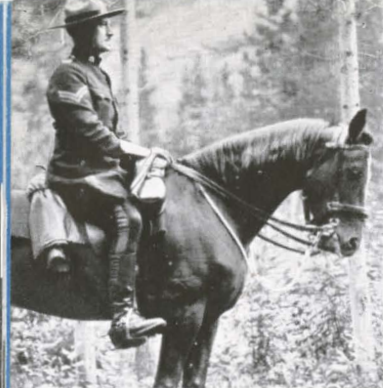
Where your steamer docks at Victoria, B. C.

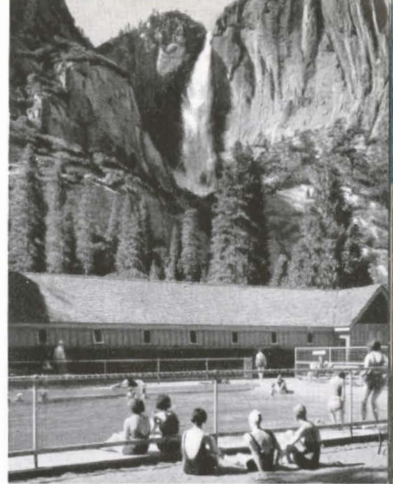


*Top: Mt. Rainier as seen from Seattle.
Below: Mt. Baker, the "Great White Watcher."*

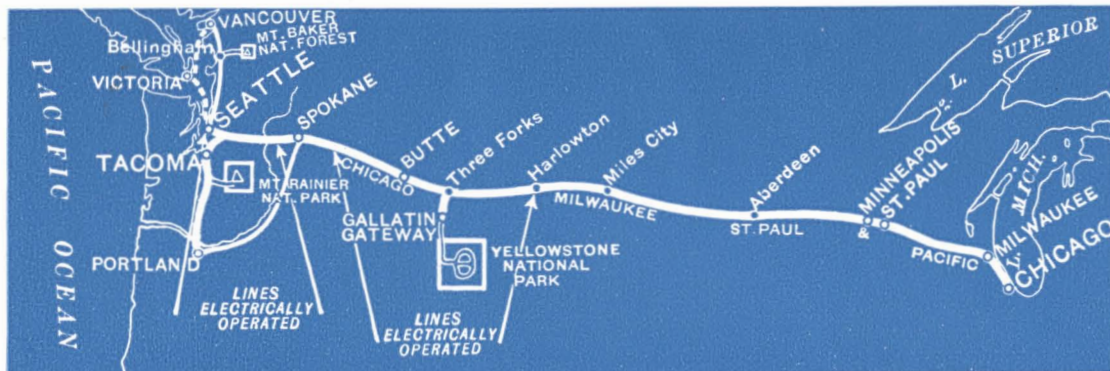
Meadows. Exploring primeval forests or boating, bathing and fishing fill happy days.

Seattle itself offers days of amusement and adventure. You may visit the waterfront on Elliott Bay where lie ships of the seven seas . . . the business and shopping districts . . . gay restaurants and modern theatres . . . Chinatown . . . the residential sections . . . beautiful freshwater lakes connected with Puget Sound by the "ship canal" . . . and the nearby Cascade Mountain resorts. Short steamer and ferry trips take you to the U. S. Navy Yard at Bremerton, to Port Townsend, Everett and other cities on Puget Sound.





Tour Numbers 3 and 3a



TOUR NUMBER 3

FIRST AND SECOND DAY ARE DESCRIBED UNDER TOUR NO. 1 ON PAGES 10 AND 11.

THIRD DAY—

Same as Third Day described under Tour No. 1 on pages 10 and 11, except that you leave The Olympian at Spokane and spend night at hotel in that city.

FOURTH DAY—Spokane.

You spend the day sight-seeing in and around Spokane, the center of a vast and beautiful region blessed with a balmy climate and rich in natural resources. Through the heart of Spokane flows the Spokane River, roaring over the cataracts of the Falls in the midst of the city's business section. There are several beautiful drives in this modern city itself, while nearby are numerous lakes, waterfalls, orchards and mountains. We leave in the late evening.

FIFTH DAY—Portland, the Rose City.

Those who are up early will enjoy their first view of the celebrated Columbia River Drive from the car window. From The Dalles westward, some of the grandest river scenery comes to view, including Multnomah and Horsetail Falls. Aside from the Columbia River drives, there is much to do and see in Portland. Embowered in flowers, its wide streets lead to many beautiful parks, and residential districts. Portland Harbor is situated at confluence of the Willamette and Columbia Rivers, and is one of the greatest fresh water ports. Leave Portland in the late evening.

SIXTH DAY—Seeing Seattle.

After registering at the hotel, the day is free for sight-seeing. For those who love the tang of the sea, there is the waterfront where a great ocean-going steamer may be moored close to a schooner from the South Seas. Seattle is on Elliott Bay, an arm of Puget Sound, and at times Uncle Sam's Pacific fleet lies in this great anchorage. Ferry and short steamer trips are always available. There are trips to Lakes Union and Washington, two large bodies of fresh water; beautiful parks, the Zoo, the University, homes set in colorful gardens and, of interest to most women, the great public markets.

SEVENTH DAY—Mt. Rainier.

Leave Seattle by motor coach following National Park Highway. The road through the park takes you through great forests of giant Douglas Fir, past Longmire Springs and Nisqually Glacier to Paradise Valley. In "tin pants," the name given to the Alpine costumes that can be rented for a small sum, you can enjoy the sensation of "nature sliding"; explore glaciers, ice caves and flower strewn Alpine meadows. Night at Paradise Lodge or Paradise Cabins.

EIGHTH DAY—Taking-in Tacoma.

After breakfast we leave Mt. Rainier for a beautiful drive to Tacoma, arriving for lunch. Tacoma, beautifully situated on Commencement Bay, holds much for the sight-seer. There is Point Defiance Park overlooking the Bay, Wright Park containing over hundreds of varieties of trees and shrubs, and nearby Fort Lewis, the largest permanent Army cantonment in the U. S. In the evening you board The Olympian, for your return journey.

NINTH, TENTH DAYS—Eastward.

Crossing four great mountain ranges with "white coal" for power. Again you see America's grandest mountain scenery unsullied by soot or cinders.

ELEVENTH DAY—Home Again.

Arrive Chicago Union Station at 9:00 a.m.

TOUR NUMBER 3a

FIRST, SECOND, THIRD AND FOURTH DAYS —SAME AS DESCRIBED IN TOUR NO. 1 ON PAGES 10 AND 11.

FIFTH DAY—Hello, Canada!

Leave Seattle in the morning for a cruise up Puget Sound, among the San Juan Islands to Victoria, on Vancouver Island. Our steamer is one of the trim "Princess" Liners. Shortly after noon you dock at Victoria—"a bit of Old England." Here there is the Parliament House, the huge dry docks; or trips to nearby points such as Butchart's Gardens or the Observatory. For dinner a mutton chop or that delightful, economical and strictly English dish, "fish and chips." Then the overnight steamer trip across Georgia Sound.



SIXTH DAY—Vancouver, Canada's Seaport.

For sight-seeing in this picturesque metropolis of British Columbia, various tours are available: Stanley Park, Marine Drive, The Beaches, Capilano Canyon, the Oriental section with its colorful Hindu and Chinese quarters. Night at hotel.

SEVENTH DAY—Back to the U. S. A.

Leave Vancouver in the morning for Bellingham, Wash. A short time is spent in this seaport and gateway city to the San Juan Islands and Mt. Baker; leave by afternoon motor for Mt. Baker National Forest. The approach to Mt. Baker and Mt. Shuksan, over a wonderful mountain highway affords magnificent views of the two great peaks. Night at Mt. Baker hotel or cabins.

EIGHTH DAY—Good bye, Mt. Baker.

Leave Mt. Baker by motor early in the morning for Bellingham, then by train back to Seattle, in time for half a day of additional sight-seeing before boarding The Olympian for your return trip.

NINTH, TENTH DAYS—Homeward Bound.

ELEVENTH DAY—Chicago Again.

Arrive Chicago Union Station at 9:00 a.m.

TOUR NUMBER 3

656 ELECTRIFIED MOUNTAIN MILES—SPOKANE—PORTLAND
COLUMBIA RIVER DRIVE—SEATTLE—MT. RAINIER

*ESTIMATED COSTS

From Chicago

	Standard Sleeper	Tourist Sleeper	Coach
Round-trip rail fare.....	\$ 86.00	\$ 68.80	\$57.35
Lower berth.....	34.50	18.00
Meals, transfers, hotels, sight-seeing.....	54.75	42.00	33.65
	\$175.25	\$128.80	\$91.00

This tour covers nearly 5,000 miles through nine states including many miles of motoring over scenic highways. You spend seven nights on train and three at hotels.

TOUR NUMBER 3a

656 ELECTRIFIED MILES—SEATTLE—PUGET
SOUND—VICTORIA, VANCOUVER, MT. BAKER

*ESTIMATED COSTS

From Chicago

	Standard Sleeper	Tourist Sleeper	Coach
Round-trip rail fare.....	\$ 86.00	\$ 68.80	\$57.35
Lower berth.....	32.00	17.00
Meals, transfers, hotels, sight-seeing.....	56.50	43.50	36.20
	\$174.50	\$129.30	\$93.55

You cover nearly 5000 miles via train, steamer and motor, in two countries and eight states. You spend six nights on train, one night on steamer and three at hotels.

***COSTS FROM OTHER CITIES**—The costs of these tours from points east and south of Chicago increase as rail fares, sleeping car rates and incidental expenses become higher; from points west of Chicago rail fares, sleeping car rates and incidentals decrease.

The standard and tourist prices quoted above will be decreased per passenger in the event two occupy a lower berth or one occupies an upper. Hotel rates are based on one to a room so that in the case of standard, tourist or coach passengers the price will be slightly less if there are two to a room. Our representatives can tell you approximately what it will cost from your home town.

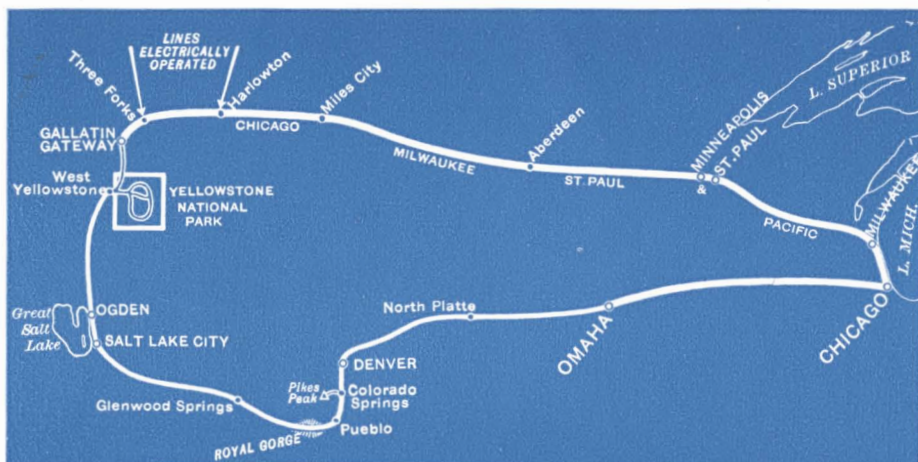


Douglas firs—some of them six hundred years old—Alaska cedars, hemlocks and other great evergreens line the highway leading to Mt. Rainier.

Tacoma's natural, deep-water harbor at Commencement Bay will handle ships of any draught, and makes this city an important world port.



Tour Number 4



FIRST DAY—Away to Yellowstone Park

Evening departure on The Milwaukee Road's de luxe Olympian, the air-conditioned, roller bearing train. See description under Tour Number 1, on page 10.

SECOND DAY—Minnesota, South Dakota

Mississippi River, St. Paul-Minneapolis, the Great Plains Country, the Missouri River and Indian Reservations. See description under second day Tour Number 1, on page 10.

THIRD DAY—Gallatin Gateway

Travel behind giant locomotives, sootless, cinderless, fumeless, *electrified* travel over the Big Belt Mountains, through magnificent Montana Canyon, on The Olympian, "Queen of Transcontinental Trains." Leave Olympian at Three Forks, Mont. and motor to The Milwaukee Road's beautiful, luxurious, mountain-cradled Gallatin Gateway Inn. Lunch at the Inn. (A more detailed description of the Gallatin Gateway trip and schedules of tour of the Park will be found under **YELLOWSTONE SIDE TRIP** on pages 26 and 27.) Thrilling 85-mile motor coach tour, available only via Gallatin Gateway, through picturesque, historic Gallatin Canyon to Old Faithful, visiting famous geysers, prismatic pools, cascades and paint pots en route. Evening, with entertainment, and night at Old Faithful.

FOURTH DAY—World's Great Geysers

Forenoon devoted to exploring Yellowstone's world-renowned geysers, exquisitely tinted pools and other strange phenomena. After lunch, motor trip over Continental Divide past Yellowstone Lake, through Hayden Valley, with its wild life, to the gorgeous canyon and mighty cataracts of the Great Falls of the Yellowstone River—one of the world's outstanding scenes. Evening entertainment and night at Canyon.

FIFTH DAY—To Mammoth Terraces

Leave Grand Canyon by motor tour through Dunraven Pass, past Tower Fall and Camp Roosevelt to Mammoth, with its enchanting hot water terraces.

Lunch at Mammoth and return to Canyon for the evening and night.

SIXTH DAY—Grand Canyon

At Canyon until mid-afternoon sight-seeing at Grand Canyon, thence by motor to West Yellowstone where you board train for Salt Lake City in late afternoon.

SEVENTH DAY—Salt Lake City, Utah

Early morning arrival; motoring tour of the historic city, including the Temple and famous Mormon Church buildings. Mormon Tabernacle organ recital. Night at Salt Lake City.

EIGHTH DAY—Great Salt Lake

Trip by trolley to Saltair, for swim in Great Salt Lake, where you can't sink. Evening departure for Colorado.

NINTH DAY—Through the Royal Gorge

Traveling all day among the loftiest, most spectacular peaks of the Rockies. Across the Continental Divide at Tennessee Pass (10,240 feet), through stupendous Royal Gorge, see the sensational hanging bridge above the roaring Arkansas River. Early evening arrival at Colorado Springs.

TENTH DAY—Colorado Springs

Your choice of many wonderful sight-seeing trips available: to the colorful, fantastic Garden of the Gods, Manitou at the foot of Pikes Peak, Seven Falls, Cheyenne Mountain, Cliff Dwellings. Evening departure for Denver, with late evening arrival.

ELEVENTH DAY—"Mile High" Capital

Sight-seeing in Denver, the Capitol Building with the silver dome, the observatory and Denver Mountain Parks. Leave Denver in late afternoon.

TWELFTH DAY—The Overland Trail

A restful day, riding through Iowa, with evening arrival in Chicago.



TOUR NUMBER 4

ELECTRIFIED THROUGH MONTANA CANYON;—GALLATIN GATEWAY—YELLOWSTONE—SALT LAKE CITY—THE ROCKIES—ROYAL GORGE—COLORADO SPRINGS, DENVER.

*ESTIMATED COSTS

From Chicago

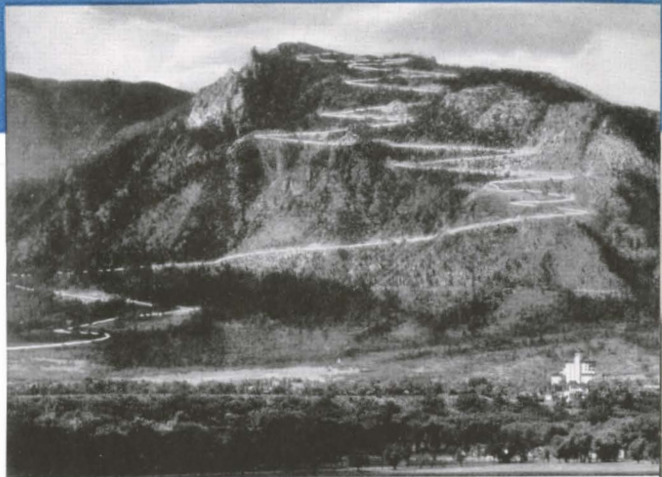
Standard
Sleeper

Round trip rail fare.....	\$ 46.95
Lower Berth.....	20.50
★Meals, transfers, hotels, sight-seeing..	85.75
	\$153.20

Standard sleeping car accommodations only are quoted. If coaches are used, there will be a saving of \$20.50.

★Costs include 3½ days in Yellowstone Park with accommodations at lodges where every guest is made a friend. The unique bungalows, great, rustic central buildings, hospitable dining rooms, campfire festivals and cordial spirit of informality make the "lodge way" share interest with Yellowstone itself. Accommodations at hotels, \$7 higher.

The spectacular Royal Gorge where the thundering Arkansas River cleaves its way through the Rockies.



The famous motor road up Pike's Peak—the last word in mountain highways.

★Includes cost of motor transportation, meals and accommodations at lodges while making complete 3½ day tour of Yellowstone National Park, \$38.

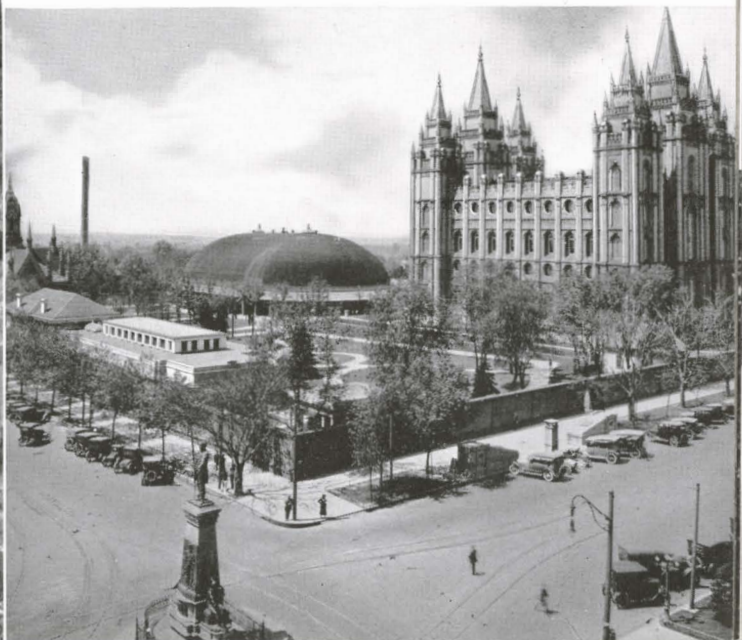
This tour covers nearly 4000 miles by train and motor through twelve states. Five nights are spent on board trains and six at hotels or lodges. It's a trip of constantly changing scenes and wide variety.

The prices quoted above will be decreased per passenger in the event two occupy a lower berth or one occupies an upper. Hotel rates are based on one to a room so that the price will be slightly less if there are two to a room.

*COSTS FROM OTHER CITIES—The costs of this tour from points east and south of Chicago increase as rail fares, sleeping car rates and incidental expenses become higher; from points west of Chicago rail fares, sleeping car rates and incidentals decrease.

Our representatives can tell you what has been allowed for your meals, what hotels you can stop at, what sight-seeing may be included to keep within your vacation budget and approximately what it will cost and how long it will take from your home town.

The Mormon Temple and Tabernacle at Salt Lake City—two masterpieces of American architecture.





*Right: Spokane,
the capital of the
Inland Empire.*

*Below: Down-
town Butte look-
ing toward the
"diggings."*



Spokane and Butte

Spokane itself is a beautiful modern city with the Spokane River flowing through its heart. It has nearly two thousand acres devoted to natural parks and children's playgrounds all connected by a splendid system of boulevards.

Immediately surrounding Spokane is a vast recreational region offering the vacationist every opportunity for enjoyment. There is Mount Spokane with an auto highway leading to its summit from which one may view a magnificent panorama including parts of Washington, Idaho and British Columbia.

Within a radius of one hundred miles are the shadowy St. Joe River, Lake Coeur d'Alene, Hayden Lake, Lake Chatcolet, Newman Lake, Lake Pend Oreille, Pend Oreille River, Box Canyon, Priest and Twin Lakes, Spirit Lake and Liberty Lake all offering excellent resort accommodations for visitors. Those who wish to rough it can easily hike or make pack trips to secluded streams and lakes buried in the heart of a mountain wilderness.

BUTTE

"The Richest Hill in the World"

Gold has always been the celebrated and storied object of mining operations, yet Butte, founded upon the gold dust and nuggets panned from the bed of Silver Bow Creek, never achieved its romantic position as



Trout fishing in the St. Joe along The Olympian trail.

"the nation's mining capital" until its huge deposits of another metal were unearthed. Though gold and silver contributed their share, unique, colorful and democratic Butte owes its position primarily to copper.

From 2700 miles of underground workings—a whole city under a city—Butte produces one-third of the copper mined in the United States; has produced as much as one-fifth of the total amount mined in the entire world.

From a placer mining camp in 1864, Butte has become a city of forty thousand, the home of the famous School of Mines of Montana University, and with a record of wealth production unequaled in the world.



A good trick if you can do it. This lumberman is rolling a log while he jumps the rope—and the water's cold.



Lake Pend Oreille. The Grand Coulee region is rich in geological phenomena.

Yellowstone Side Trip

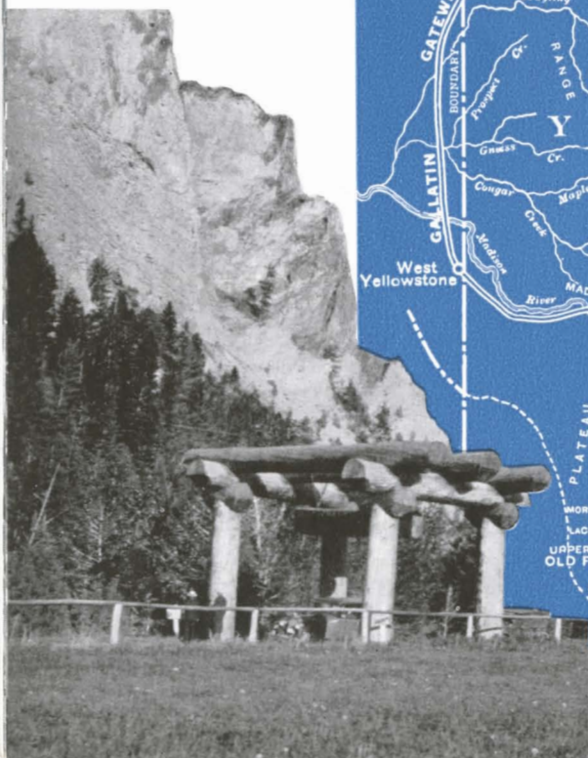
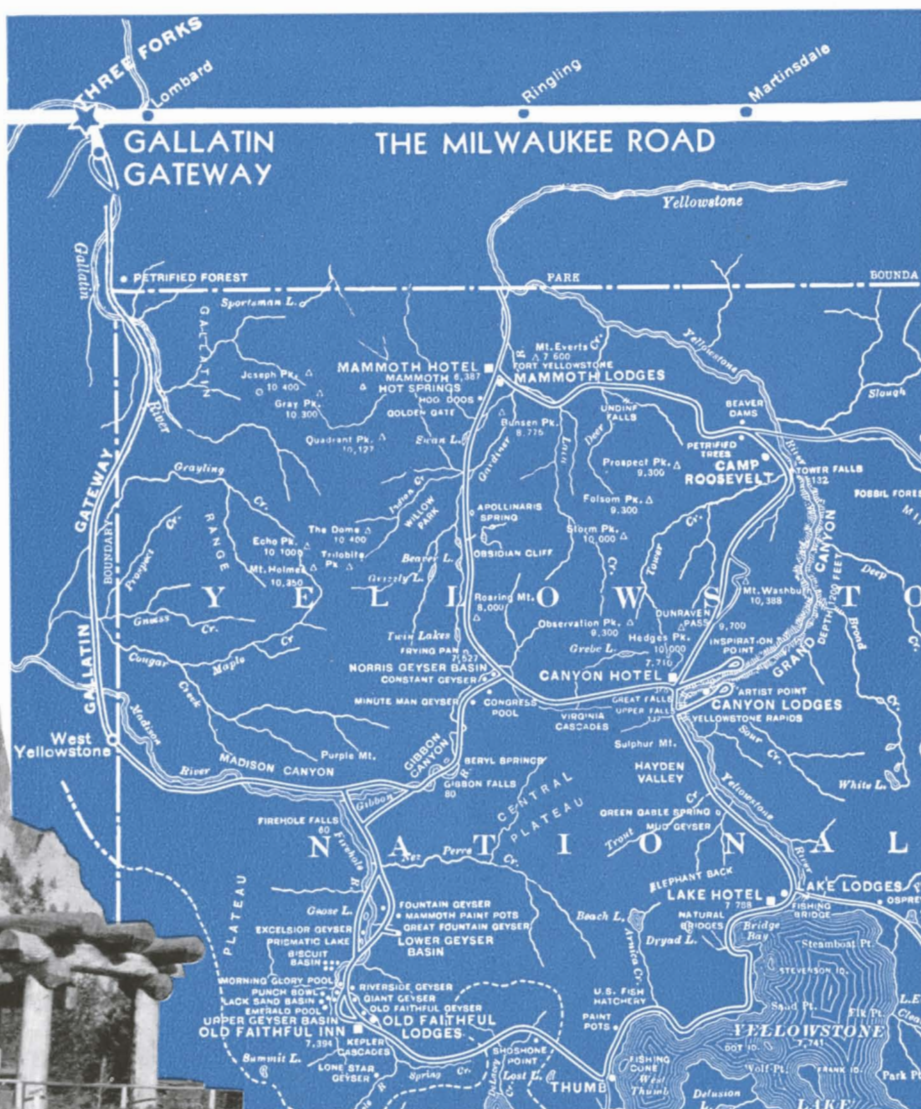
Going or returning to the Pacific North Coast, via The Milwaukee Road, a side trip may be arranged to Yellowstone National Park from Three Forks, Mont. The entrance to the Park is through scenic, historic Gallatin Gateway and the tour of the Park this way includes 170 extra miles of mountain motoring. It also includes overnight lodging at The Milwaukee Road's mountain-

cradled Gallatin Gateway Inn. All of these extras actually cost you only \$1.15 more than the tour of Yellowstone Park itself.

Operating on the schedule shown on the following page, comfortable motor coaches leave Gallatin Gateway Inn for the thrilling 85 mile trip up Gallatin River Canyon—past Spanish Peaks, within close range of Cathedral Rocks, Pulpit Rock, Sheep Mountain

Map showing Gallatin Gateway Entrance and routes through the Park.

When you pass through this arch—the Gallatin Gateway—you are well on your way to Yellowstone.





and across the numerous windings of Grayling Creek. Scenes of inspiring beauty unfold as the highway winds through pine-scented woodlands, along the rims of chameleon canyons, beside sparkling streams and waterfalls, within constant view of rugged peaks, buttes and snow crowned ranges. Gallatin Gateway is the portal to the last remnant of the romantic Old West of Nez Perce, Crow and Flathead, of John Colter, of trappers, of Custer. A fitting prelude and conclusion to Yellowstone's geysers and other mystic phenomena.

Cost of Park Tour as side trip from Three Forks, Mont.

Including Motor Transportation and Meals and Lodging

At Hotels \$46.15 — At Lodges \$39.15

A longer time than is provided by the regular "three-and-one-half days" tour may be spent at the various stopover points, if desired. For such additional time, meals and lodging are charged for at the following rates: At the hotels, \$6.50 to \$10.00 per day; at the lodges, \$4.50 per day. American plan.

Motor Transportation Schedules Through the Park

In and out the GALLATIN GATEWAY as side trip from Three Forks, Mont.

		MEALS				SHORT STOPOVERS EN ROUTE AT
		Breakfast	Lunch	Dinner	Lodging	
1st Day						
Lv. Gallatin Gateway Inn.....	12:15 P.M.	.	1	.	.	Gallatin Canyon.
Ar. Old Faithful.....	5:35 P.M.	.	.	1	1	Fountain Paint Pot.
2nd Day						
Lv. Old Faithful.....	1:30 P.M.	1	1	.	.	
Ar. Grand Canyon.....	5:55 P.M.	.	.	1	1	
3rd Day						
Lv. Grand Canyon.....	9:00 A.M.	1	.	.	.	Dunraven Pass.
Ar. Mammoth Hot Springs.	1:00 P.M.	.	1	.	.	
Lv. Mammoth Hot Springs.	2:00 P.M.	
Ar. Grand Canyon.....	4:15 P.M.	.	.	1	1	
4th Day						
Lv. Grand Canyon.....	12:40 P.M.	1	1	.	.	Norris Basin.
Ar. West Yellowstone.....	2:30 P.M.	
Lv. West Yellowstone.....	2:40 P.M.	
Ar. Gallatin Gateway Inn.....	5:40 P.M.	.	.	1	.	Gallatin Canyon.

In GALLATIN GATEWAY out West Yellowstone as in Tour No. 4

		MEALS				SHORT STOPOVERS EN ROUTE AT
		Breakfast	Lunch	Dinner	Lodging	
1st Day						
Lv. Gallatin Gateway Inn. . .	12:15 P.M.	.	1	.	.	Gallatin Canyon.
Ar. Old Faithful.	5:35 P.M.	.	.	1	1	Fountain Paint Pot.
2nd Day						
Lv. Old Faithful.	1:30 P.M.	1	1	.	.	
Ar. Grand Canyon.	5:55 P.M.	.	.	1	1	
3rd Day						
Lv. Grand Canyon.	9:00 A.M.	1	.	.	.	Dunraven Pass.
Ar. Mammoth Hot Springs.	1:00 P.M.	.	1	.	.	
Lv. Mammoth Hot Springs.	2:00 P.M.	
Ar. Grand Canyon.	4:15 P.M.	.	.	1	1	
4th Day						
Lv. Grand Canyon.	3:30 P.M.	1	1	.	.	Norris Basin
Ar. West Yellowstone. . . .	5:25 P.M.	.	.	1	.	

The smooth Gallatin Highway skirts the river; 85 miles of mountain motoring.



The lounge at hospitable Gallatin Gateway Inn is an evening gathering place.



Alaska Extension

Alaska, land of the midnight sun, of totem poles, of Robert W. Service, of the gold rush days, can be taken out of the pages of fiction and made a reality. This land of adventure is now within easy reach of the vacationist. Faster train and ship schedules and lower fares enable you to stop dreaming about it and actually take an Alaska trip.

As an independent trip to the Pacific North Coast or in connection with Tour number 1, 2 or 3, you may make a marvelous and thrilling extension cruise to Alaska on the palatial steamships from Seattle. This season, a nine day trip provides an opportunity to visit Alaska within the ordinary two or three weeks' vacation period.

This nine day cruise through the Inside Passage, calling at all the important cities of Southeastern Alaska, is unusual in many respects. You sail for 2500 miles through a protected waterway, on sheltered seas in view of some of the most spectacular mountain scenery. Truly an ocean voyage, yet with none of the discomforts that being on the open sea brings to some.

Your ship visits Taku Glacier, near Juneau. Slowly moving toward open water, Taku and other such "living" glaciers present a most awe-inspiring sight as they loom hundreds of feet above your steamer's deck. Tons of blue ice crash down the face of the glacier into the water at the will of your captain, who merely has to blow a blast from the ship's whistle to cause this phenomenon.

The most Northern port of call is Skagway, a town still rich in the reminders of the rip-roaring gold rush days when the stampede was on to the Klondike. And you'll enjoy the visit to dreamy Sitka with its dramatic Russian and native history and a superb natural setting. You stop at other interesting ports of call; you'll see totem poles; Indians; the activities of the Great Alaskan fishing industry, and fjords that rival those of Norway.

You'll enjoy every minute of your time on



The "inside passage" to Alaska.

shipboard—lounging in your deck chair—joining, if you care to, in pleasant social activities in spacious public quarters—participating in shuffle board and other deck games. Shore parties are always a bit of gay adventure. And my how you can eat—"six a day"—breakfast, morning bouillon, luncheon, afternoon tea, dinner and supper.

ITINERARY of the Nine-Day Totemland Cruise

SAILING DATES:

Monday, July 8th; Friday, July 19th;
Monday, July 29th; Friday, August 9th.



Northbound

Lv. Seattle.....	9:00 a. m., Monday	Friday
Ar. Ketchikan.....	a. m., Wednesday	Sunday
Lv. Ketchikan.....	p. m., Wednesday	Sunday
Ar. Wrangell.....	p. m., Wednesday	Sunday
Lv. Wrangell.....	p. m., Wednesday	Sunday
Ar. Petersburg.....	a. m., Thursday	Monday
Lv. Petersburg.....	a. m., Thursday	Monday
Ar. Taku Glacier.....	a. m., Thursday	Monday
Lv. Taku Glacier.....	a. m., Thursday	Monday
Ar. Juneau.....	a. m., Thursday	Monday
Lv. Juneau.....	p. m., Thursday	Monday
Ar. Skagway.....	7:00 a. m., Friday	Tuesday

Southbound

Lv. Skagway.....	7:00 p. m., Friday	Tuesday
Ar. Haines.....	p. m., Friday	Tuesday
Lv. Haines.....	Midnight, Friday	Tuesday
Ar. Sitka.....	p. m., Saturday	Wed'sy
Lv. Sitka.....	p. m., Saturday	Wed'sy
Ar. Ketchikan.....	a. m., Monday	Friday
Lv. Ketchikan.....	a. m., Monday	Friday
Ar. Seattle.....	a. m., Wed'sy	Sunday

COSTS

All-expense, nine full days on cruise—Seattle to Skagway and return; including transportation, meals and standard state room accommodations, \$85.00 and up.

You sail 2500 miles and spend every night on the steamer.

In order to be sure of your accommodations on these cruises, reservations should be made well in advance. Ask any Milwaukee Road Travel Bureau for information about other Alaska cruises.



Indian totem pole in Alaska.



Your deck chair is a ringside seat for scenes such as this along the rugged Alaskan Coast.

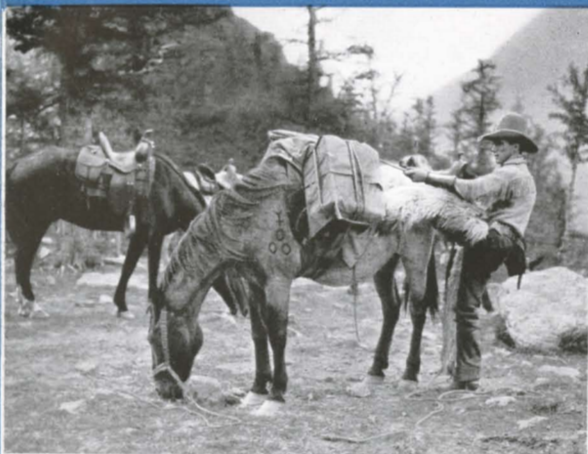
The fleet is in—Elliott Bay, Seattle.



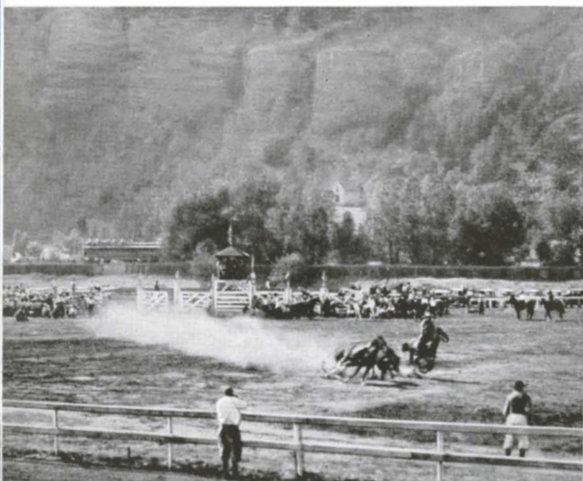
Coming to dock in an Alaskan fishing port.



Guest Ranches



A good horse wrangler throws the complicated Diamond Hitch as easily as you can tie a shoelace.



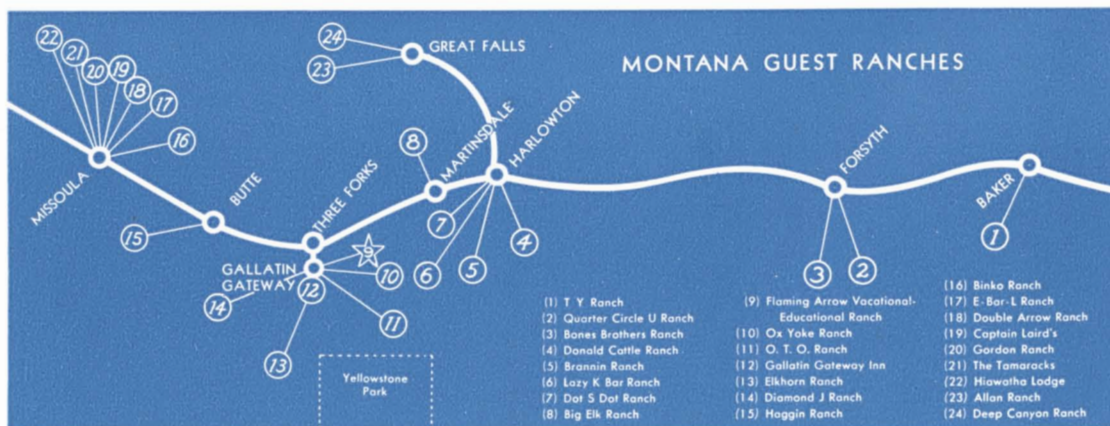
Tough luck, cowboy—but spills like this are what make rodeos exciting. Informal rodeos in your corral are equally thrilling.

If you have never been at a Guest Ranch, you have a treat coming. It's genuine ranch life with this difference—the ranches are devoted wholly, or in part to the entertainment of their guests. And what a job they do! In clear, sparkling air, surrounded by superb mountain scenery, you'll enjoy a thrilling program of outdoor activity. You'll be made comfortable and "at home" by true western hospitality that is satisfied with nothing less than giving you the grandest time of your life.

On the main line of The Milwaukee Road, excellent Guest Ranches are within easy reach of Baker, Forsyth, Harlowton, Martinsdale, Great Falls and Butte. There are many of them in the country immediately surrounding Gallatin Gateway Inn, and another group in the section north of Missoula.

If you have any love for the outdoors—go to Montana and spend your vacation on a ranch. Though there is a wide variety of activities open to you, most of them center around the corral. You needn't be an expert horseman—and may be completely inexperienced. Under the wise guidance of a good "wrangler" and with a well-broken, sure-footed horse at your command, you will soon be at home in the saddle.

These ranches are neither luxurious country clubs nor primitive cabins. They offer simple, modern comforts, well-prepared, wholesome food and a unique opportunity for outdoor enjoyment. There is no need to carry an extensive wardrobe as most, or all, of your time will be spent in outing clothes.





"Far from the madding crowd"—Guest Ranches feature solid comfort and healthful outdoor activities.

A foursome in the Pacific Northwest wonderland.

Almost any ranch you would select is near good trout water that may be stocked with native brook trout, rainbows, brownies, steel-heads or loch leven. So bring along your fishing tackle. Licenses and additional supplies are generally obtainable at the ranch.

We will be glad to give you further information about these ranches, or put you in touch with ranch proprietors.

It is desirable to make your reservations in advance of your arrival.

Gallatin Gateway Inn

To those who want to come "out" and see, or gather first hand information about the ranches around the Gallatin and Madison rivers north of Yellowstone, we suggest a visit at Gallatin Gateway Inn. The Inn is located thirty-five miles south of Three Forks on the Gallatin River and is an ideal recreational headquarters. But a short canter away on picturesque trails or but a stone's throw from motor highways are secluded ranches and mountain resorts that will welcome a visit of inspection from you.

Mountain-cradled Gallatin Gateway Inn in the heart of the Guest Ranch country.



The Sportsman's Paradise

Every mile of The Milwaukee Road's Northwest, from the Dakotas to the Olympic Peninsula, offers almost unlimited opportunity for indulging a taste for outdoor sports. Obviously, in the limited compass of these pages, we cannot give detailed information, but can only sketch roughly the thrills that await you in the pursuit of your favorite pastime and suggest you call on our Travel Bureaus for further information.

The Olympic Peninsula

The Olympic Peninsula in Washington may be last on the trail of The Olympian, but it is first in the hearts of sportsmen who have been there. Here in the deep water of Lake Crescent are found the big, gamy Beardslee trout and his smaller relative, the Crescent. Lake Quinault, the Quinault River, the Queets, the Humptulips and the lesser lakes and streams abound in steelheads, mountain trout, bass and tye.

Between "strikes" one may run through the "white water" of mountain streams in Indian dugouts; or blaze a new trail through the forest primeval to Mt. Olympus, Mt. Queets, Mt. Christie or some unnamed peak. Big game is plentiful. Deer, elk and bear may be shot in season, while cougar, wildcat, and lynx may be hunted at any time.

Among the resorts where sportsmen may make their headquarters and leave their families while roughing it in the wilds, are those listed on the right hand side of opposite page.

Hunting and Fishing in Washington, Idaho and Montana

In this section the ardent fisherman can find waters to suit his taste from the deep sea fishing of Puget Sound and the Pacific, where King, Tyee and Chinook salmon are found, to the headwaters of the Missouri in Montana. While there is a considerable variety of fish to be taken, the finest and most common fishing in the lakes and streams of the west is for trout—trout of many varieties and tremendous size, trout from glacier-fed, roaring mountain streams, from deep, forest-lined lakes and tiny mountain pools far up above the timber line. It is impossible to enumerate all of the streams, but some of the best

known are the Gallatin, Madison and Jefferson in south central Montana; the water of the Hell Gate, the Missoula and Clark's Fork farther west in Montana; the St. Maries in Idaho and the many streams of Washington. All have their enthusiastic champions.

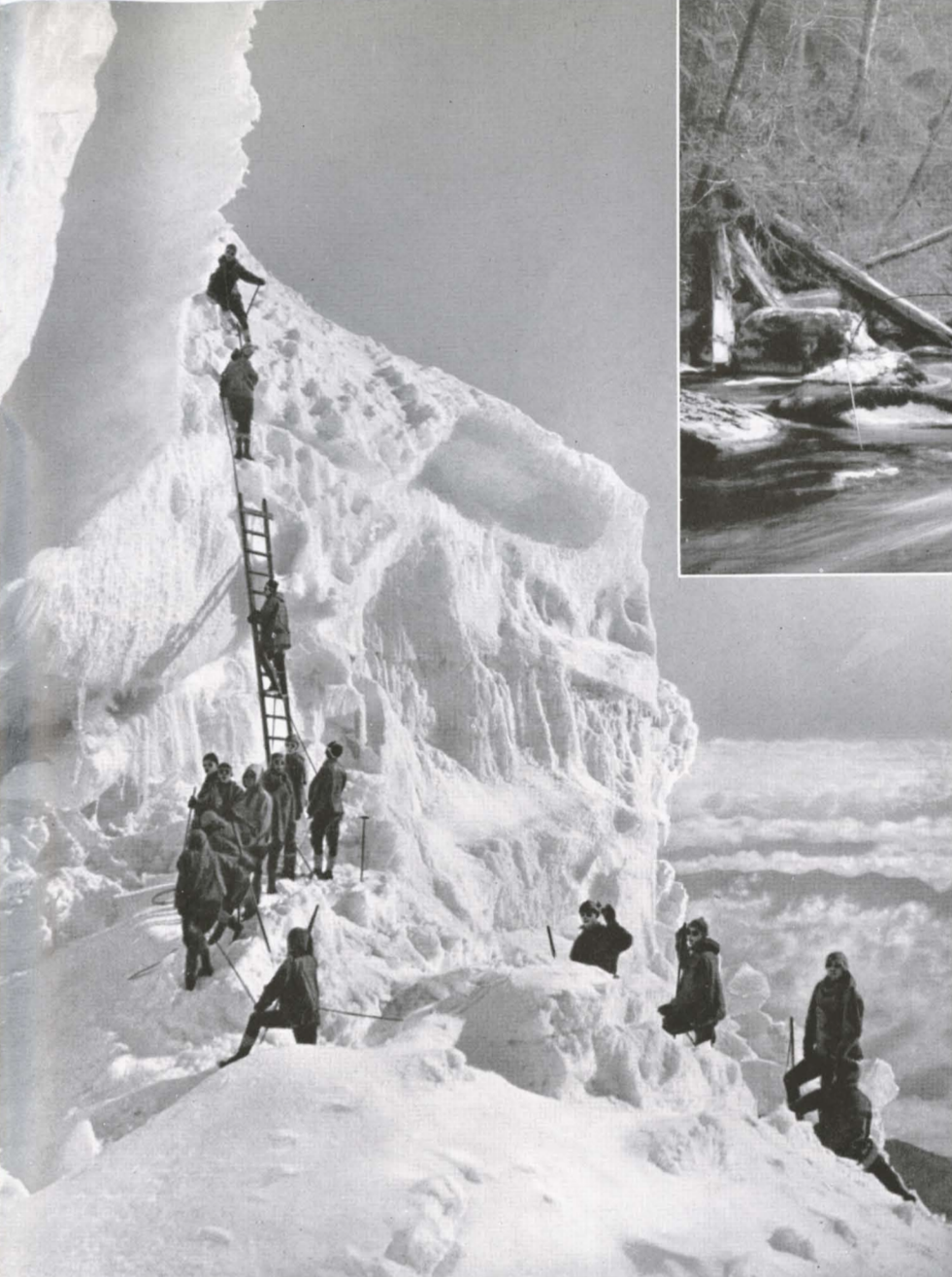
In the mountainous country of Montana, Idaho and Washington, bears (brown, black and grizzly) abound. There are deer, elk, moose, antelope, mountain lion and mountain goat. And if you push up into the wild and lonely peaks, you may have even the thrill of stalking the big-horn sheep—the mighty *Ovis Canadensis*, reckoned one of the finest of big game trophies by hunters all over the world. Some animals may be hunted at all seasons of the year, for example—coyote, wolf and mountain lion.

Some of the Guest Ranch owners and many resort proprietors have facilities for caring for hunting parties during the seasons. Guides and camping equipment are furnished by the management, but arrangements should be made in advance through The Milwaukee Road Travel Bureaus shown on page 36.

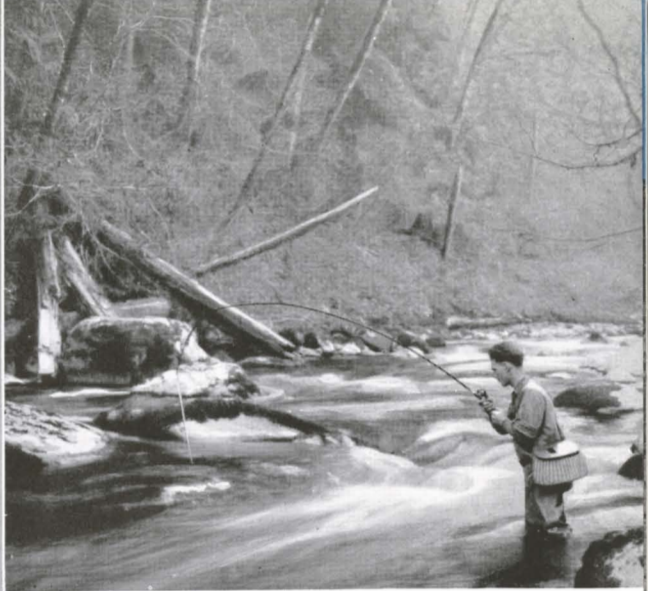
Mountain Climbing

Long one of the favorite sports of Europe, and now rapidly gaining enthusiastic advocates in this country, is mountain climbing. And there are mountains here affording ideal climbs for everyone from the rank beginner and the novice to the experienced amateur. The ascents of Mt. Rainier, Mt. Baker or Mt. Olympus are as testing climbs as anyone can desire if you go to the very summits; yet their lower slopes are ideally suited to the less ambitious. There are Alpine meadows carpeted with flowers. There are vast glacier fields, deep crevasses and sheer, rocky precipices that would more than test the agility of a goat.

Besides the peaks mentioned, the climber has his choice of the hundreds of lesser known peaks of the Big Belts, Rockies, Bitter Roots, Cascades and Olympics. Dozens of them afford sport of the most thrilling nature—and there are many peaks, in isolated ranges within easy pack train distance, that you can be the very first to conquer!



'Way up above the clouds. These adventurous climbers are nearing Columbia Crest, Mt. Rainier.



There are hundreds of fast-running trout streams in the Northwest.

OLYMPIC PENINSULA RESORTS

ABERDEEN, WASH.
 Morck Hotel
 FORKS, WASH.
 Woodland Hotel
 HOQUIAM, WASH.
 Emerson Hotel
 LAKE CRESCENT, WASH.
 P. O., Port Angeles
 Lake Crescent Tavern
 Ovington's Summer Resort
 Rosemary Inn,
 LA PUSH, WASH.
 Culley's Hotel
 OLYMPIA, WASH.
 New Governor Hotel
 Hotel Olympian
 PACIFIC BEACH, WASH.
 Pacific Beach Hotel
 PORT ANGELES, WASH.
 Olympic Hot Springs
 Sol Duc Hot Springs
 PORT TOWNSEND, WASH.
 Chevey Chase
 QUINAULT, WASH.
 The Quinalt



Above: Bands of elk come down to the water holes every day. You can hunt with a camera.

Left: "But you should have seen the one that got away!" And they really are big on the Olympic Peninsula.

Escorted Tours



A hiking party, with experienced guide, explores Paradise Valley. On Mt. Rainier your mountain climbing can be as adventurous as you choose. The costumes and equipment you see are rented at low cost.

At the mountain resorts of the West, luxurious swimming pools enable you to enjoy your swim several miles above sea level.



Many discriminating travelers prefer to travel the *all-expense, personally escorted* tour way. Many attractive Escorted Tours are operated during June, July and August via The Milwaukee Road.

As a member of these Tours you travel in an escorted party, conducted by an experienced courier. You have no tickets to buy, no hotel reservations to make, no sight-seeing to arrange, *no baggage worries!* Everything is handled by travel experts; and your certificate of membership in an Escorted Tour becomes a magic carpet which transports you everywhere without a single travel worry.

Railroad, steamship and hotel accommodations, meals and sight-seeing are all first class throughout, furnished to you at a cost surprisingly low when you consider what you receive. Your travel dollar goes a long way because you get the benefit of favorable contract arrangements with hotels and sight-seeing companies all along the route.

You travel with a jolly, congenial group . . . people of culture and refinement who enjoy travel for its educational and recreational value, and who enjoy having a good time! A Tour of this kind is a pleasant travel experience you will always cherish.

Sight-seeing at the stops en route is done in small parties, with experienced guides and lecturers who personally conduct each group. There are no "gaps" in the service . . . no possibilities of confusion, no waste of valuable vacation time. Motors wait at station platforms and hotel doors; train schedules are easily met. Your baggage disappears as if by magic when you "set it out" at your hotel . . . it is in your room waiting for you when you arrive at your next stop. And that is typical of the service in every detail. Your experienced escort takes care of everything.

You know before you start exactly what your trip will cost, and what will be furnished. Once the tour begins, you have nothing to do but enjoy yourself.

Here are some "samples" of Escorted All-Expense Tours for 1935 via The Milwaukee Road. Plan now to join one of these groups for a happy, carefree vacation you'll never forget.

SERIES "A": Gallatin Gateway, Mt. Rainier, Seattle, Victoria, Vancouver, Lake Louise, Banff. 14 days from Chicago; all expenses from \$217 with meals, or \$175 without meals. 3 days in Yellowstone National Park may be added for \$38.00 additional, lodge way, or \$45.00 additional, hotel way through the Park.

A Popular Vacation Idea



A tour party at Pike's Peak. Right: Seven Falls, Colorado Springs.

SERIES "AA": Alaska, with Gallatin Gateway, the Pacific Northwest and Canadian Rockies. 21 days from Chicago; all expenses from \$333 with all meals, or \$295 with meals only for the 9-day Alaska cruise.

SERIES "B": Yellowstone National Park through Gallatin Gateway, Old Faithful, Grand Canyon, Mammoth, then Salt Lake City, the Royal Gorge, Denver and Colorado Springs. 12 days from Chicago; all expenses from \$155 with meals, or \$137 with meals only in Yellowstone Park. Hotel way in Yellowstone, \$7 additional. Three days to Estes-Rocky Mountain National Park may be added for \$25 additional.

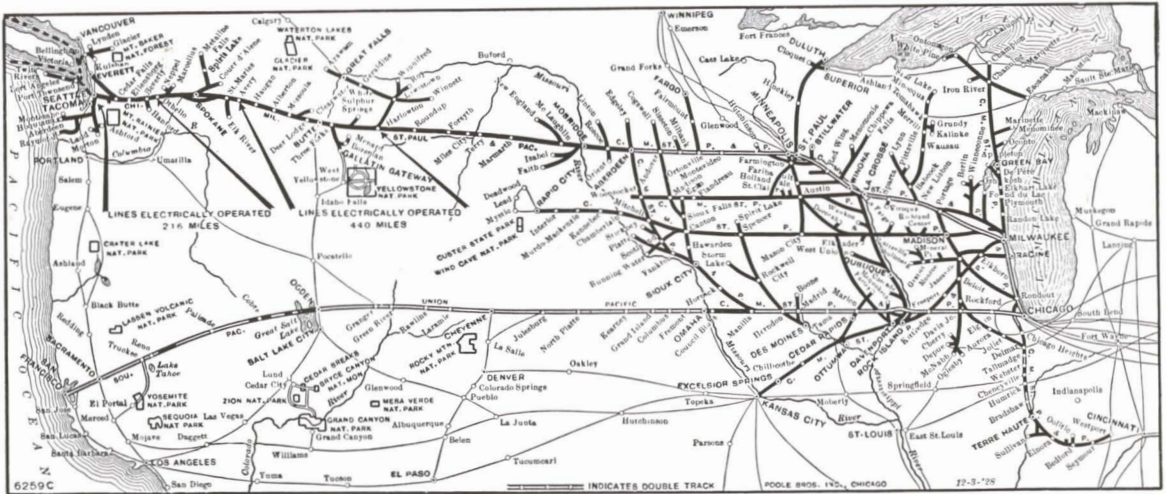
SERIES "D": Yellowstone National Park through Gallatin Gateway, returning via the famous Cody Road . . . with the complete motor trip through the Park, stopping at Old Faithful and Grand Canyon. 8 days from Chicago; all expenses from \$116 lodge way through the Park, or \$123 hotel way . . . all meals included throughout.

All parties will leave Chicago on the famous air-conditioned, roller bearing Olympian of The Milwaukee Road. The prices quoted include first-class transportation throughout, but Tourist Class may be substituted on Tours "A" and "AA" for those who wish.

Literature describing Escorted Tours is available . . . giving complete schedules and rates . . . showing exactly where you go and when . . . telling what is included in the rates . . . and our Travel Bureaus will gladly quote the rate from your home.



The Milwaukee Road Travel Bureaus



TRAVEL AND INFORMATION BUREAUS

Our Travel Bureaus are eager to tell you of the advantages of Milwaukee Road service to the West and Northwest. Vacation Itineraries will be cheerfully arranged.

ABERDEEN, SO. DAK.	Milwaukee Station, 1 N. Main Street.	Phone 2325
ATLANTA, GA.	717 Healey Bldg.	Phone Walnut 6585
BELOIT, WIS.	Milwaukee Station.	Phone 257
BOSTON, (9) MASS.	294 Washington St. (510-12 Old South Bldg.)	Phone Liberty 9812
BUFFALO, N. Y.	295 Main St. (206 Ellicott Square Bldg.)	Phone Washington 0634
CEDAR RAPIDS, IOWA	Milwaukee Station, 401 First Ave.	Phone 6027
CHICAGO, ILL.	Corner Monroe and Clark Sts.	Phone Central 7600
CINCINNATI, OHIO	49 E. Fourth St. (204 Dixie Terminal)	Phone Main 5010
CLEVELAND, OHIO	925-927 Euclid Ave. (937 Union Trust Bldg.)	Phone Main 2457
DENVER, COLO.	1706 Welton St. (217 Patterson Bldg.)	Phone Tabor 5962
DES MOINES, IOWA	501 Locust St.	Phone 3-6468
DETROIT, MICH.	131 LaFayette Blvd. W. (806 Trans. Bldg.)	Phones Randolph 3716-3717
DUBUQUE, IOWA	Milwaukee Station.	Phone 686
GREEN BAY, WIS.	Milwaukee Station.	Phone Adams 866
KANSAS CITY, MO.	817 Walnut St., Scarritt Arcade.	Phone Main 6390
LA CROSSE, WIS.	Milwaukee Station.	Phone 76
LOS ANGELES, CALIF.	210 W. 7th St. (1024 Van Nuys Bldg.)	Phone Trinity 9555
MADISON, WIS.	Milwaukee Station.	Phone Badger 6300
MASON CITY, IOWA	9th St. and So. Pennsylvania Ave.	Phone 324
MILWAUKEE, WIS.	701 No. Water St. (Title Guaranty Bldg.)	Phone Marquette 6120
MINNEAPOLIS, MINN.	45 South Seventh St. (Radisson Hotel)	Phone Main 3441
NEW ORLEANS, LA.	1522 Canal Bank Building.	Phone Main 6449
NEW YORK, N. Y.	547 Fifth Ave. at 45th St. (French Bldg.)	Phone Vanderbilt 3-3721
OMAHA, NEBR.	1611 Farnam St. (New Farnam Bldg.)	Phone Jackson 4481
PHILADELPHIA, PA.	123 So. Broad St. (Fidelity-Phila. Trust Bldg.)	Phone Pennypacker 0407-08
PITTSBURGH, PA.	7th Ave. and Grant St. (1122 Gulf Bldg.)	Phone Atlantic 2438
PORTLAND, ORE.	802 Southwest 6th Ave.	Phone Beacon 7338
ST. LOUIS, MO.	611 Olive St. (2003 Railway Exchange)	Phone Chestnut 0337
ST. PAUL, MINN.	Corner 5th and Robert Streets.	Phone Cedar 4491
SALT LAKE CITY, UTAH	503 Clift Bldg., Main and Broadway.	Phone Wasatch 3625
SAN FRANCISCO, CALIF.	661 Market St. (Palace Hotel Bldg.)	Phone Garfield 5334
SEATTLE, WASH.	4th Ave. and Union St. (White Bldg.)	Phone Eliot 6800
SIOUX CITY, IOWA	518 Nebraska St. (Lobby Commerce Bldg.)	Phone 8-2555
SIOUX FALLS, SO. DAK.	Milwaukee Station, 5th and Phillips.	Phone 217
SPOKANE, WASH.	Sprague Ave. and Post St.	Phone Main 2261
TACOMA, WASH.	112 South Ninth Street.	Phone Main 2101
VANCOUVER, B. C.	793 Granville Street.	Phone Seymour 165
VICTORIA, B. C.	902 Government Street.	Phone Garden 7041

GEO. B HAYNES

Passenger Traffic Manager

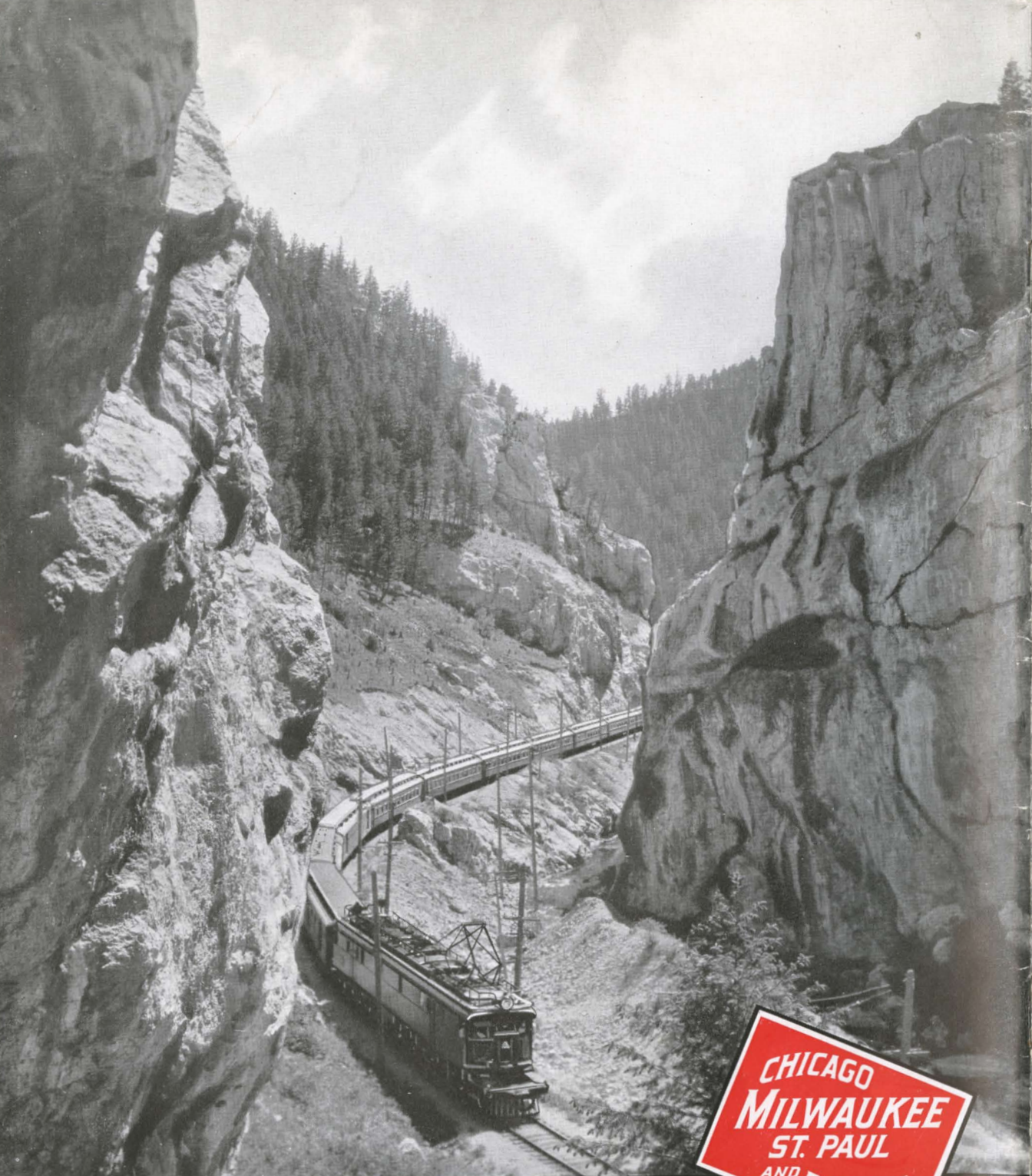
W. B. DIXON

General Passenger Agent

CHICAGO, ILL.

The MILWAUKEE ROAD

Printed in U.S.A. 4-1-35



CHICAGO
MILWAUKEE
ST. PAUL
AND PACIFIC

Vacation Suggestions
PACIFIC NORTHWEST