

# Yellowstone

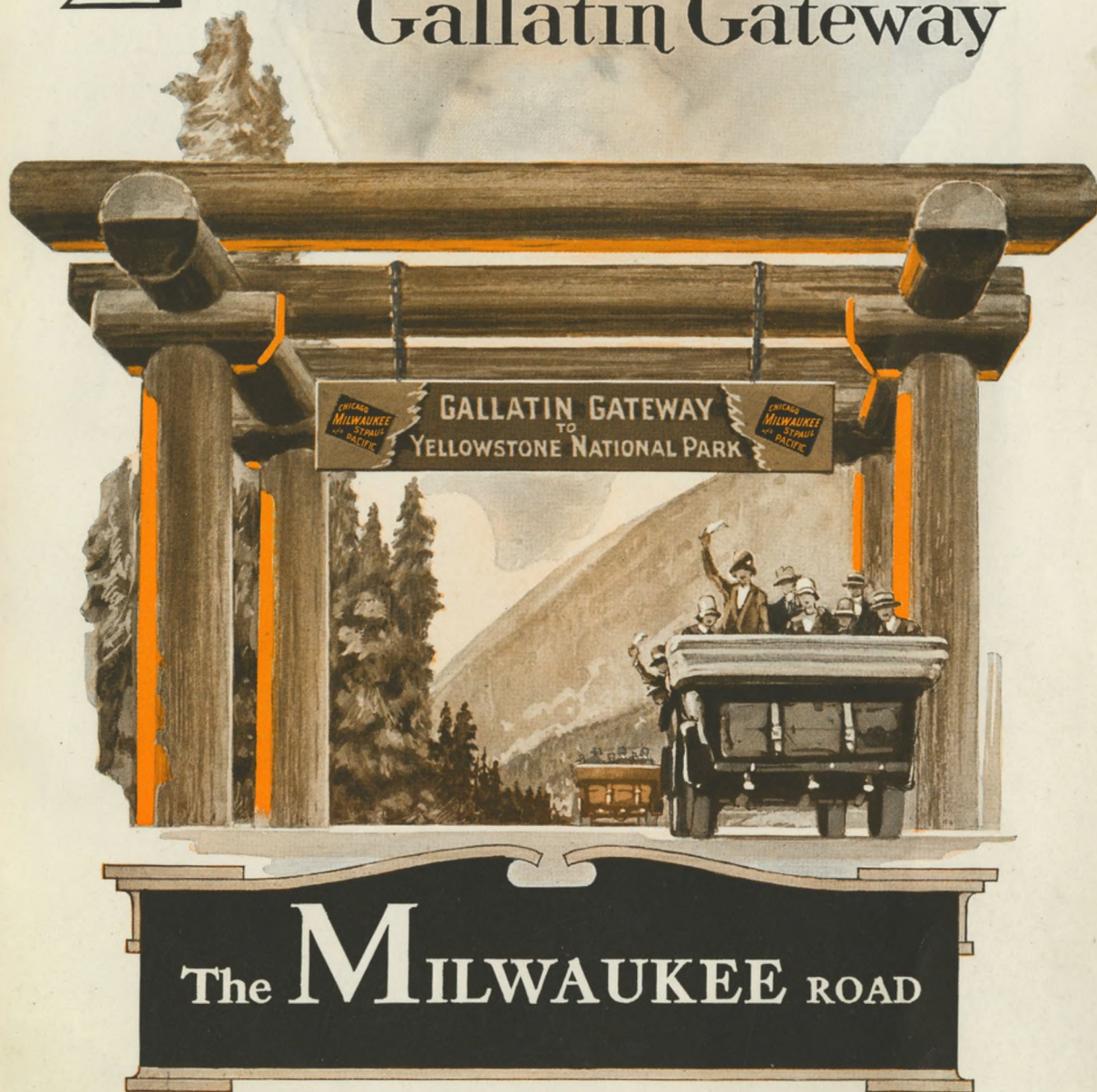






# Yellowstone

through the  
Gallatin Gateway





# Yellowstone



It is the Land of the Magic Wand! With a terrific roar a river shoots straight up from the Bowels of the Earth . . . Mighty, Powerful, Mad . . . tearing, crashing, charging. Suddenly it changes to a huge White Plume of Peace. The delicate colors of Rainbows playfully dance among its folds. Gracefully it sways against a background of azure blue sky that blends into the Infinite and then . . . it disappears as suddenly as it came into Being. There is a low far-away murmur . . . Silence. The Great Magician has waved his Magic Wand!

A never ending bolt of thick white silk turns to Water and unrolls through green velvet of Silent Pines . . . suddenly it leaps over a tremendous precipice into a Valley whose walls are lined with golden Yellow Stones. It is a Valley splashed brilliant with the colors of Rubies, Emeralds, Topaz, and Amethyst and stained with streaks as Brown as the Ivory of an old Opium Pipe . . . it





is a Valley of Roaring Demons . . . it is a Valley where the Great Artist wiped his Brushes . . . . it is a Valley where the Great Sculptor modeled fantastical Cathedral Spires and carved freakish Gargoyles to satisfy a Temperamental Whim!

Not far away the Earth spits Mud from Unknown Depths . . . . in a basin bleached White with suffering Heat, a little pool as blue as the sky and as delicate as a Morning Glory springs into existence . . . . hideous Mud puddles become pallettes of dazzling colors . . . . countless bottomless pits fill with boiling water that never cools . . . . flowers skip across Meadows . . . . armies of giant Pines guard caches of Hidden Treasures . . . . terraces, tier upon tier, turn to Marble . . . . Plains of the Dead where not a Lizard treads or a Weed grows appear in Valleys of Plenty where the Buffalo, the Elk, the Cougar, the Lynx, the Bear roam in Undisturbed Contentment . . . . a mountain changes into Black Glass . . . . and the Magic Wand waves on!

There is Beauty and Ugliness everywhere . . . . Peace and Chaos, the Pastoral and the Sublime. It is the only place on Earth where the Great Magician displays all his Tricks of Entertainment . . . . and over it all He spreads a thin Veil of Mystery



*The Milwaukee Road*



## Through Gallatin Gateway

through which we see, but only our Imagination enters. It is the Land of the Magic Wand . . . . the Yellowstone!

The Yellowstone has always been a Land of Mystery! Fearless Indian warriors and hunters at the time of the coming of early White Trappers shunned this Land with Superstition and Horror. They believed that the Evil Spirits dwelt there and created Beauty as a Decoy to entice the weak into the jaws of Oblivion. And yet they knew of a weak and harmless race of the Taukuarikas who existed at one time within this Yellowstone without Fear and without Harm . . . . although these same people had a Tradition that their Ancestors, a most powerful race, had been destroyed by a terrible convulsion of Nature. Who these people were, what they looked like, how they lived, when and why they left and what became of them . . . . only the Great Magician knows. And He forever adds to the Great Mystery . . . . the Magic Wand moves on!

Always a Land of Mystery! Only Yesterday the people laughed at the amazing reports of the early discoverers. Through fear of ridicule, the newspaper editors refused to publish them. Such phenomena could not exist! Jim Bridger, one of the earliest





Whites to see the Wonders of the Yellowstone, was branded the worst Liar in seven states. And even today, the Stay-at-Homes are inclined to doubt. Yet, it is all there under the eternal spell of Enchantment . . . . greater, more beautiful, more amazing than can be told . . . it is there waiting for you to come, to see, and to believe.



And when you go, enter this Land of Magic through the Gallatin Gateway . . . . it is the only place of Entering-in where the Veil of Mystery wraps you so enticingly within its folds of Fascination . . . . it is the only place where you skim through the Mist of Reality on a Magic Carpet in just the order the Great Magician would have you view his Sorcery . . . . it is the only place where the shifting scenes of this Phantom Land will forever drift back with the Tide of Memory . . . . it is the Portal of the Land of the Magic Wand!

"Open Sesame!"



*The Milwaukee Road*



# Yellowstone

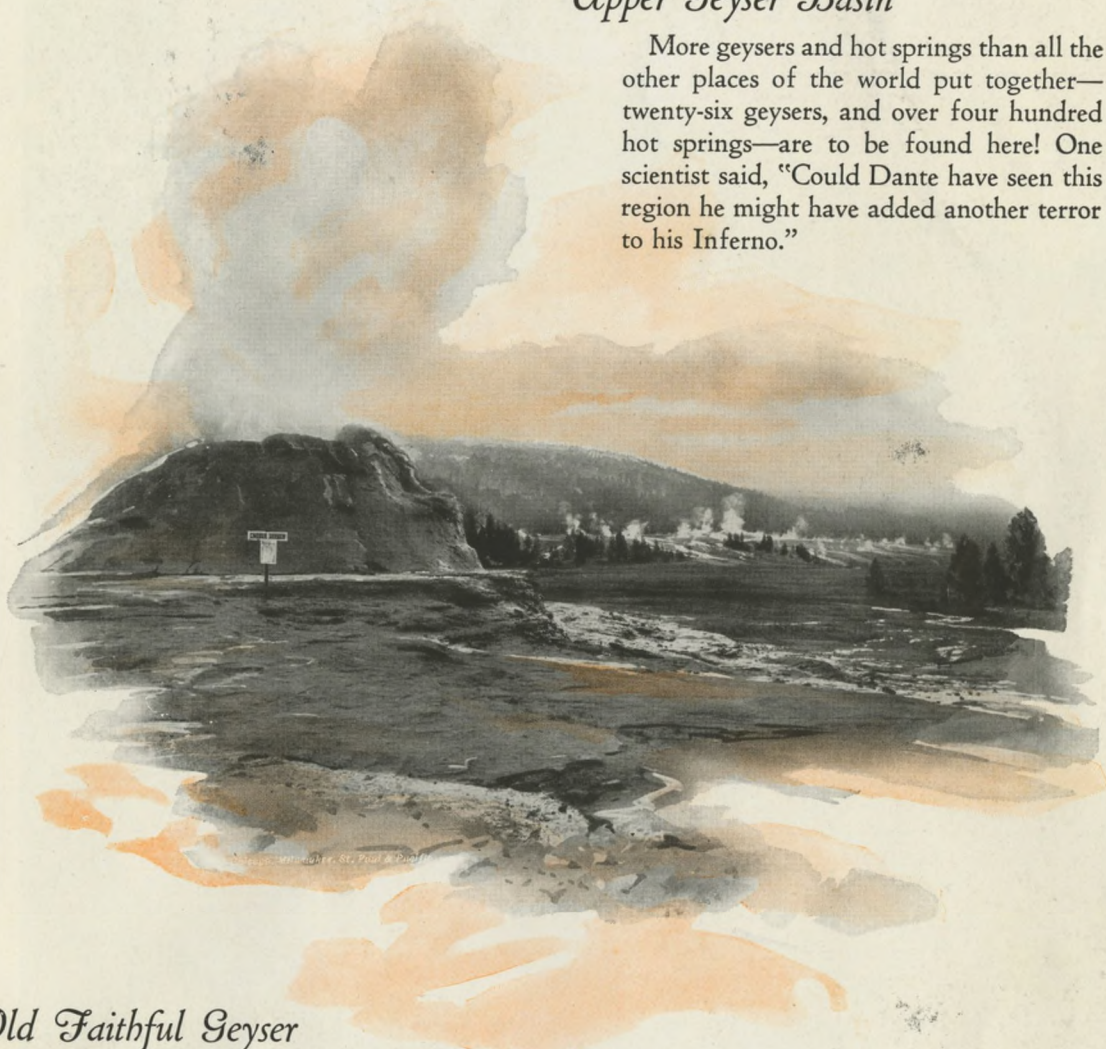


© Chicago, Milwaukee, St. Paul & Pacific



## *Upper Geyser Basin*

More geysers and hot springs than all the other places of the world put together—twenty-six geysers, and over four hundred hot springs—are to be found here! One scientist said, "Could Dante have seen this region he might have added another terror to his Inferno."



## *Old Faithful Geyser*

Old Faithful, the most famous geyser in the Park, regularly goes into eruption every hour. Several minutes before it begins to play, its pent-up waters roar beneath the Earth's crust. Then . . . with a muffled explosion it throws a stream of boiling water over 150 feet high for about four minutes. The temperature of its waters at the time of eruption is over 200° F. At night a searchlight plays from the roof of the near-by inn and breaks the spouting waters into delicate folds of entrancing colors.



# Through Gallatin Gateway





## *Yellowstone Motor Coaches*

Eleven-passenger motor coaches comfortably carry the visitors from the Gallatin Gateway Inn over the entire Park route, stopping at the most interesting points while the driver explains them. Special arrangements can be made for the use of Lincoln touring cars.



### *Entrance Rock near Gallatin Gateway*

The famous Gallatin Gateway lies in one of the most romantic and adventurous regions of Western history. Lewis and Clark, the trail breakers to the Pacific-Northwest, pitched one of their camps near here. The Blackfeet, Crows, Shoshone and Nez Perces found it the hunting Grounds of Plenty. Trails of early fur trappers centered here. And today it is the Greatest Gateway to the Greatest National Park, where the visitor begins his journey to view the amazing magic and beauty of this Wonderland in the most fascinating sequence.



# Yellowstone

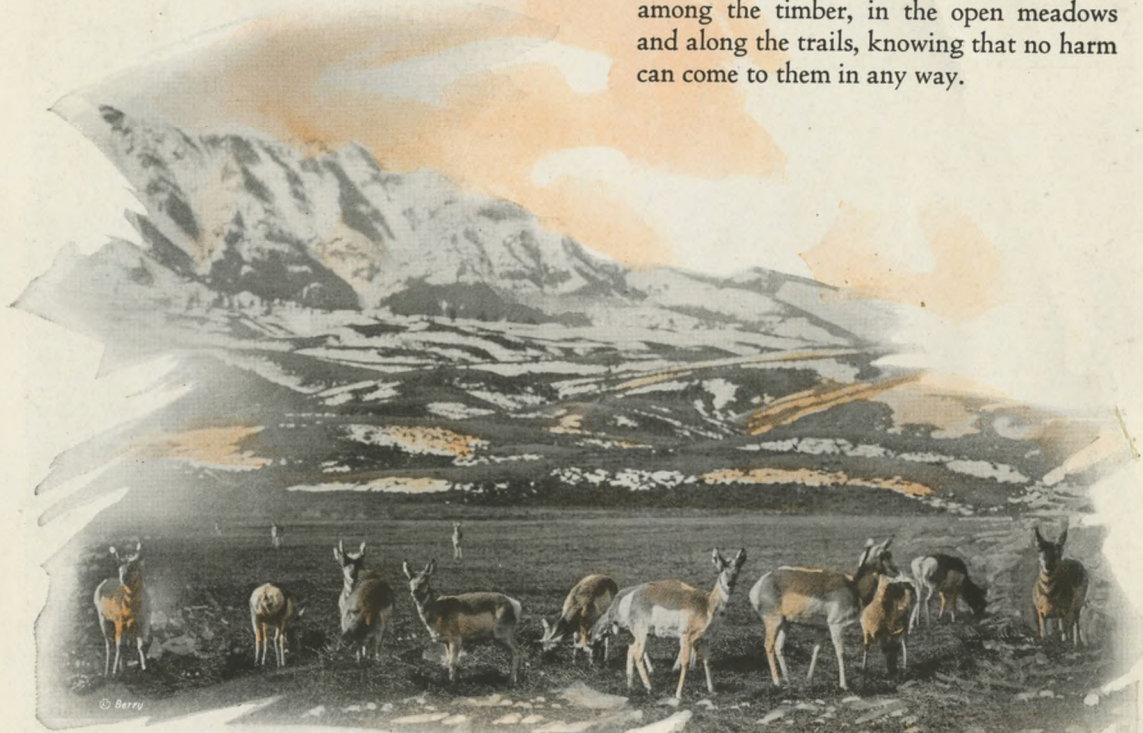


© Chicago, Milwaukee, St. Paul & Pacific



## *Wild Animals*

Yellowstone is a wild animal Paradise—one of the largest wild animal refuges in the world. Elk and deer graze peaceably among the timber, in the open meadows and along the trails, knowing that no harm can come to them in any way.



## *The Lower Falls of the Yellowstone*

There is not a grander sight in the world! After the Yellowstone River hurriedly hops over the 105-foot wall of the Upper Falls, roars through a vent in the forest, contracts itself into half its normal width, it seems to hesitate—for a moment—on the verge of a greater precipice . . . then, with a majesty and beauty all its own, it leaps 308 feet, with a terrific roar, in one unbroken fall into the canyon below! . . . it becomes a shining mass of silver foam scattering millions of little rainbows through the mist that rises at its feet . . . then, with renewed determination, it again starts on its long adventurous journey to the sea.



# Through Gallatin Gateway

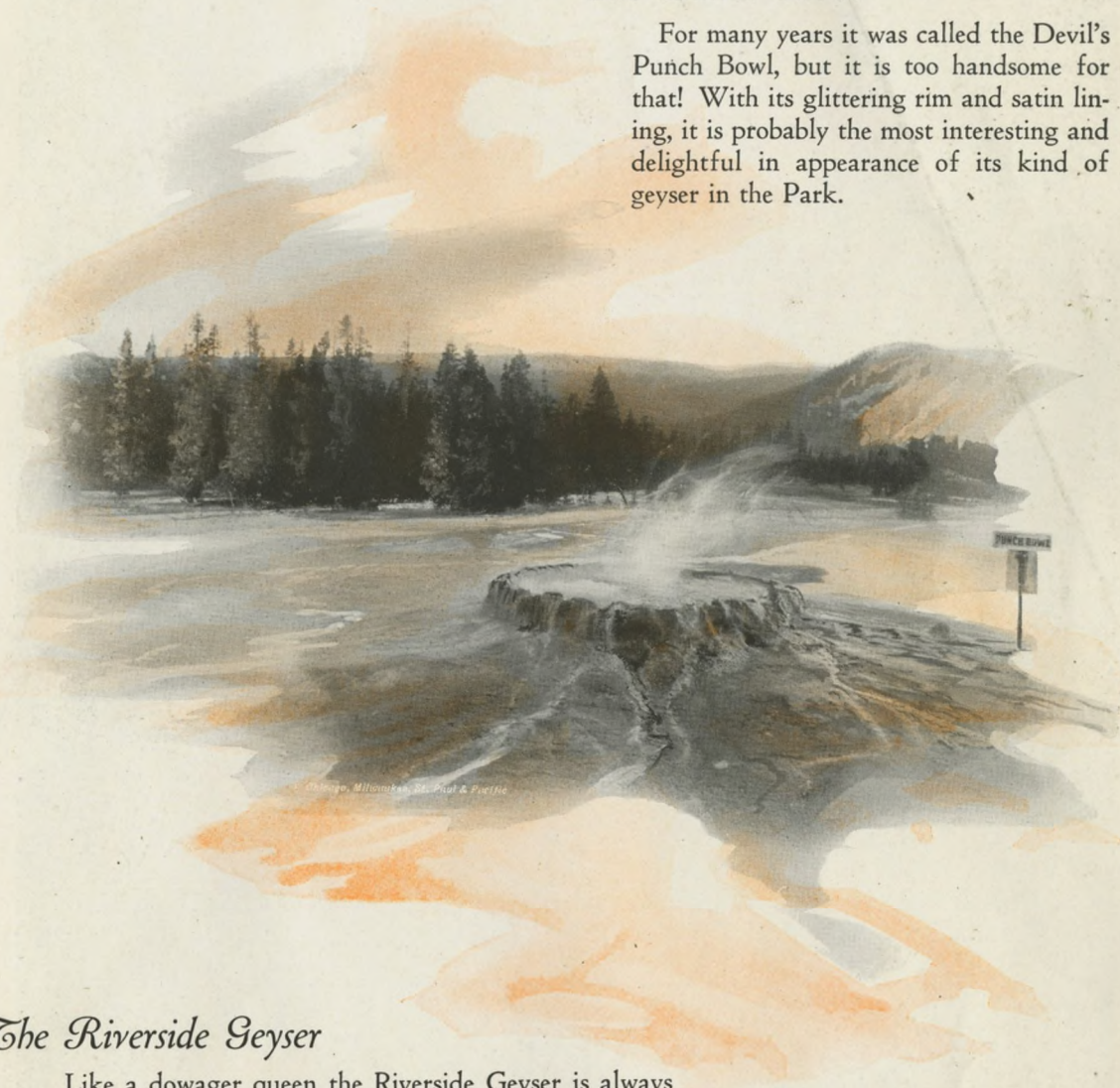


© Chicago, Milwaukee, St. Paul & Pacific



## *The Punch Bowl*

For many years it was called the Devil's Punch Bowl, but it is too handsome for that! With its glittering rim and satin lining, it is probably the most interesting and delightful in appearance of its kind of geyser in the Park.



## *The Riverside Geyser*

Like a dowager queen the Riverside Geyser is always announced before her arrival by a little crater near it that begins playing about twenty minutes before Her Highness appears! Then, . . . from her throne on the bank of the Firehole River she makes a fifteen-minute appearance every five or six hours in a stream of water about 100 feet high, and with the utmost politeness she plays at an oblique angle in order not to drench her admiring audience on the near-by road!



# Yellowstone





## *Yellowstone Lake*

Yellowstone Lake, at an elevation of 7,730 feet, the highest navigable lake in North America, twenty miles across and one hundred miles around, reflects as in a mirror, its majestic setting of mountains and forests.



## *Pulpit Rock*

Soon after passing under the Gallatin Gateway Arch, the Images of Fantasy, like Pulpit Rock, begin to make their appearance and prepare the visitor for the crowded wonders of the Land of the Magic Wand, that are to come. On both sides of the road — with the river first on one side and then on the other — these spectacles jump up like puppets in a Judy show . . . the foothills clothed in the green velvet of pines creep to the edge of the road in friendly greeting . . . the rolling meadows beckon you on . . . and the valleys spread out as if opening their arms in welcome!



# Through Gallatin Gateway



*Photo by Haynes*



## *Bears*

On their never-satisfied perennial prow for food these brigands of the road do not hesitate to take it when found, any time, anywhere. Bears of all kinds are usually seen at feeding time around the hotels and camps.

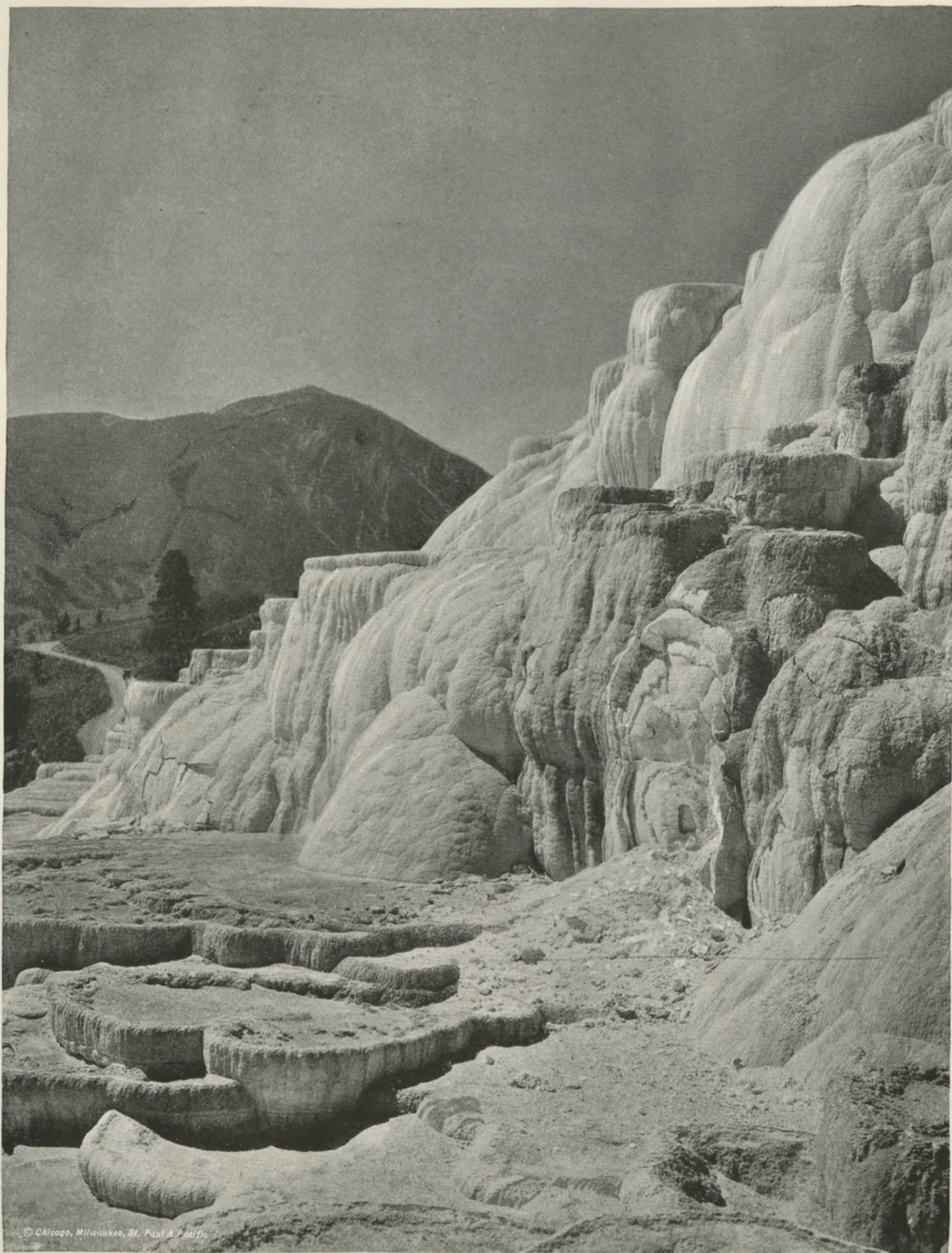


## *The Giant Geyser*

With a throat four feet wide and a cone ten feet high, the Giant Geyser is the highest geyser in the world, dwarfing all other geysers in magnificence as it plays its waters 250 feet into the air for over an hour at a time. Jealous little craters around it constantly hiss and spout with streams of water they steal from the Great Giant, robbing it of the energy that it would otherwise exert in producing an even grander and more spectacular sight and at more frequent and regular intervals.



# Yellowstone



© Chicago, Milwaukee, St. Paul & Pacific



## *The Oblong Geyser*

Along the west bank of the Firehole River, just off the road, is a strange, interesting thing — the Oblong Geyser, with its rough mouth of tan-colored lips, frothing and bubbling with boiling blue waters like a frenzied demon!



## *Pulpit Terrace*

In some bygone days this vast country may have been an open-air cathedral of a race of giants, for here we find their tremendous pulpit! In reality, it is a group of stalactites, colored with reds, pinks, blues and grays forming a part of Jupiter Terrace, the largest hot springs terrace in existence, whose waters rise to the earth's surface from unknown depths. Throughout the immediate vicinity are numerous other quaint forms of colored terraces and caves all within easy reach—such as Cleopatra, Minerva, Orange Spring, White Elephant, Angel, Canary, Cheops, Devil's Kitchen and Poison Cave.



# Through Gallatin Gateway



© Curtis



## *The Handkerchief Pool*

A laundry that receives and returns goods neatly done the same day! Your handkerchief, rolled in a ball and tossed in the boiling water of this natural tub, disappears and then comes up a few minutes later unrolled and neatly washed.



## *Along the Gallatin River*

As the magnificent panorama of peaceful mountain scenery begins to unroll, and the lonely old white-topped peaks—realizing that a friendly stranger is in their midst—all but nod, the green river begins to twist and turn, leaping and cascading in ecstasy over boulders and fallen pine trees as if playing hide-and-seek with the near-by road. But with all its deceptive dodging the river remains in close proximity to the road guiding it through the choicest of scenery before it speeds it on its way through the greater splendors just beyond.

# *The Milwaukee Road*



# Yellowstone

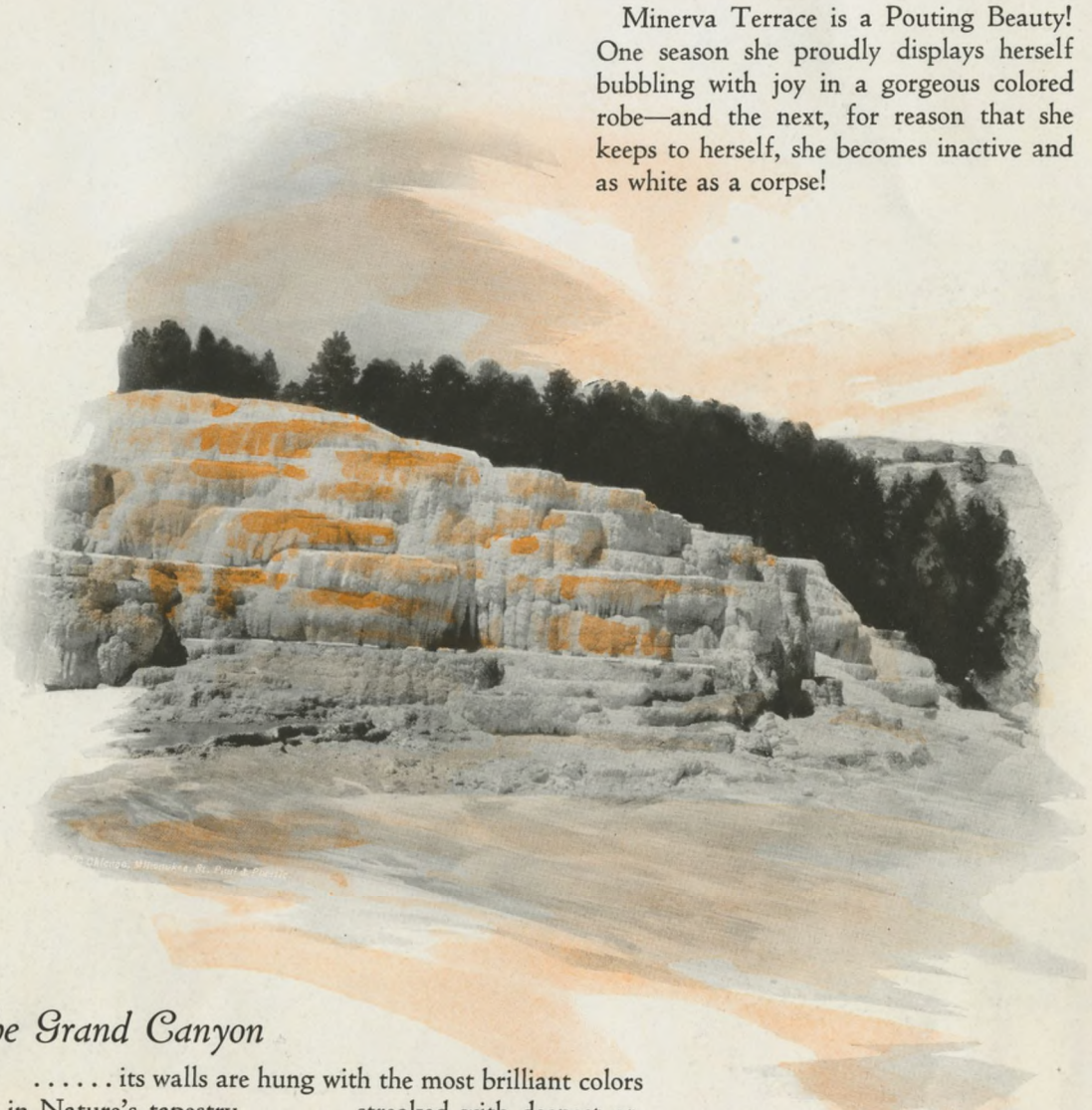


Chicago, Milwaukee, St. Paul & Pacific



## *Minerva Terrace*

Minerva Terrace is a Pouting Beauty!  
One season she proudly displays herself  
bubbling with joy in a gorgeous colored  
robe—and the next, for reason that she  
keeps to herself, she becomes inactive and  
as white as a corpse!



## *The Grand Canyon*

..... its walls are hung with the most brilliant colors  
in Nature's tapestry ..... streaked with deepest or-  
ange to faintest lemon, with deepest crimson to softest  
pink, with black through all the grays to white .....  
above are the dark greens of the pine forests ..... a  
thousand feet below, the jade greens of the foaming,  
mighty river cut their way, deeper and deeper, through  
cathedral spires and fantastical gargoyles ..... all un-  
der the dome of the bluest sky!



# Through Gallatin Gateway



*The Gallatin Gateway Inn*





**I**N an ideal spot in the Gallatin Valley reposes the richest achievement that the hand of Man has contributed to this Wonderland—the \$300,000.00 Gallatin Gateway Inn. It is an imposing structure of semi-Spanish design patterned after a country club with a beautiful foyer, an artistically furnished lounge, comfortable bedrooms with baths, broad verandas, a spacious dining room and thoroughly modern kitchen, shower baths, rest rooms, baggage and check rooms. It is especially suited for the visitor who cares to enjoy a brief or extended stop-over between the arrival or departure of trains and motors.

*The Milwaukee Road*



# Yellowstone



© Chicago, Milwaukee, St. Paul & Pacific



## *The Main Highway near Tower Falls*

From Gallatin Gateway a splendid, wide, gravel road of over 235 miles winds through the forests and canyons, over the mountains and meadows, across the Continental Divide and rivers, circling the Park and visiting all the principal points of interest.



## *Mt. Washburn*

From the crest of Mt. Washburn, 10,317 feet, the Land of the Magic Wand becomes a relief map spread out at our feet! A winding automobile road up the flower-covered side of the mountain to its very top is one of the best mountain highways in the world, constantly twisting and turning the better to display Wonderland's ever-changing pictures. A trip to the summit will be included in your tour if you desire it.



# Through Gallatin Gateway





## *The Morning Glory Pool*

This delicate and modest little thing attempted to hide its beauty in a cluster of pine trees just off the road—so the road was built around it! It is one of the most exquisitely colored pools in the Park—quite indescribable.



## *Old Faithful Inn*

Old Faithful is the most extensive log structure in the world. It is an eight-story, modern hotel with every convenience and luxury. Practically every bit of the material from the foundation to the roof was obtained from the surrounding mountains and forests. The other hotels in the Park are Mammoth Hot Springs, Lake and Canyon—all providing the same splendid service on the American plan. During the evenings at the various hotels, the Forest Rangers give interesting talks on the life, history and phenomena of the Park.



# Yellowstone



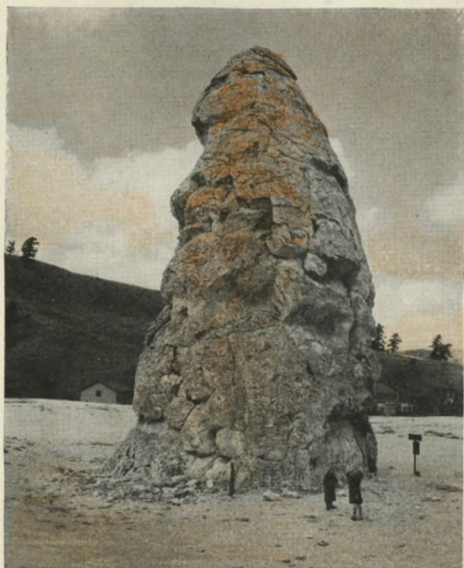
© Chicago, Milwaukee, St. Paul & Pacific



## *Administration Buildings*

Mammoth Hot Springs, the location of the Park Administration buildings, was known as Fort Yellowstone when the U. S. Cavalry troops were quartered here.

Liberty Cap, in the vicinity, is an extinct hot spring cone 38 feet high and 20 feet in diameter at its base.

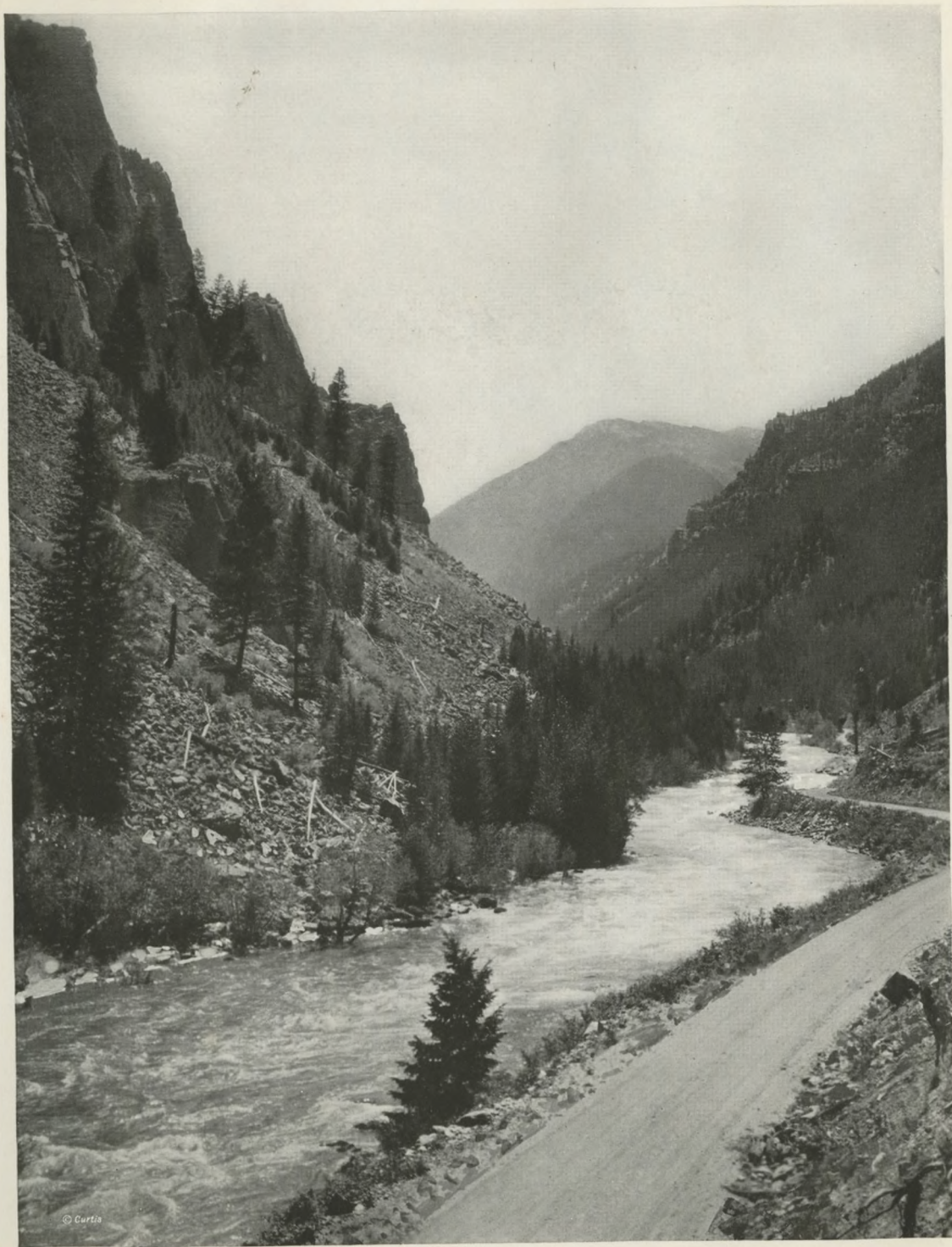


## *The Golden Gate*

Between yellow-stained rocky walls 300 feet high, sparkling in the sun like gold, the road runs along Len Creek through the rugged pass between the Terraces of Mammoth Hot Springs and the lofty elevation of Bunsen Peak. And without any hint of what is to come, the country changes from rocky, disordered narrowness into a broad, level meadow covered with flowers, streaked with creeks, within a circle of the distant forests and mountain peaks.



# Through Gallatin Gateway





### *The Fountain Paint Pot*

Here is the Palette on which the Great Magician mixed His paints to decorate the Land of the Magic Wand!—a boiling pit of cream, rose, pink and red pasty muds, that continually bubbles and plops into odd shapes.



### *West Gallatin Canyon*

Always in close proximity to the mountains, along the banks of the turbulent streams, through forested canyons and across valleys of green, the road from the Gallatin Gateway leisurely winds its way into the Park, with the Madison Range on the west and the Gallatin Range on the east. For eighty miles between the Gallatin Gateway and West Yellowstone the road twists and turns through the forests, between narrow, rocky gateways, and crosses and recrosses the rivers and their tributary creeks again and again, unrolling its ever-changing scenes in fascination and wonder as it draws the visitors into the Park.



# Yellowstone



Photo by Haynes



## *Buffalo*

A wild herd of a thousand buffalo roams the hills of the Magic Land far from the roads, and a tame herd chews its cud in corals at Mammoth Hot Springs and dreams of the adventurous life their ancestors led in roaming the plains as a conquering army!



## *The Canyon Hotel*

Not far from the Grand Canyon of Yellowstone, within sound of the roar of the Lower Falls, is the Canyon Hotel, accommodating over six hundred guests. To spend an extra day at this hotel will be one of the most enjoyable of your Yellowstone adventures. The cozy foyer, extensive lounge and the tremendous dining room are all elegantly furnished in keeping with the surroundings. Concerts and dances are given in the lounge at this and the other hotels in the Park.



# Through Gallatin Gateway

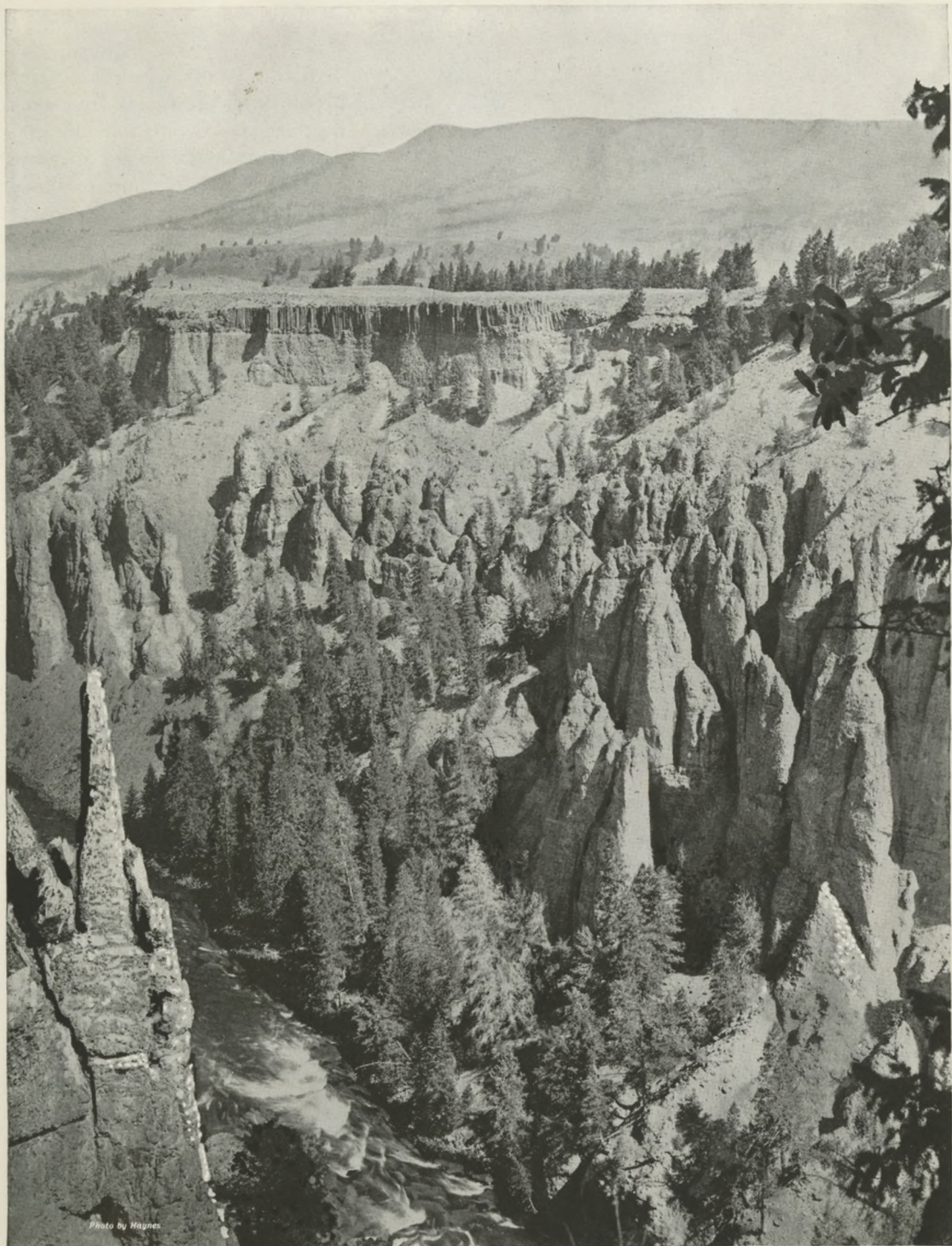
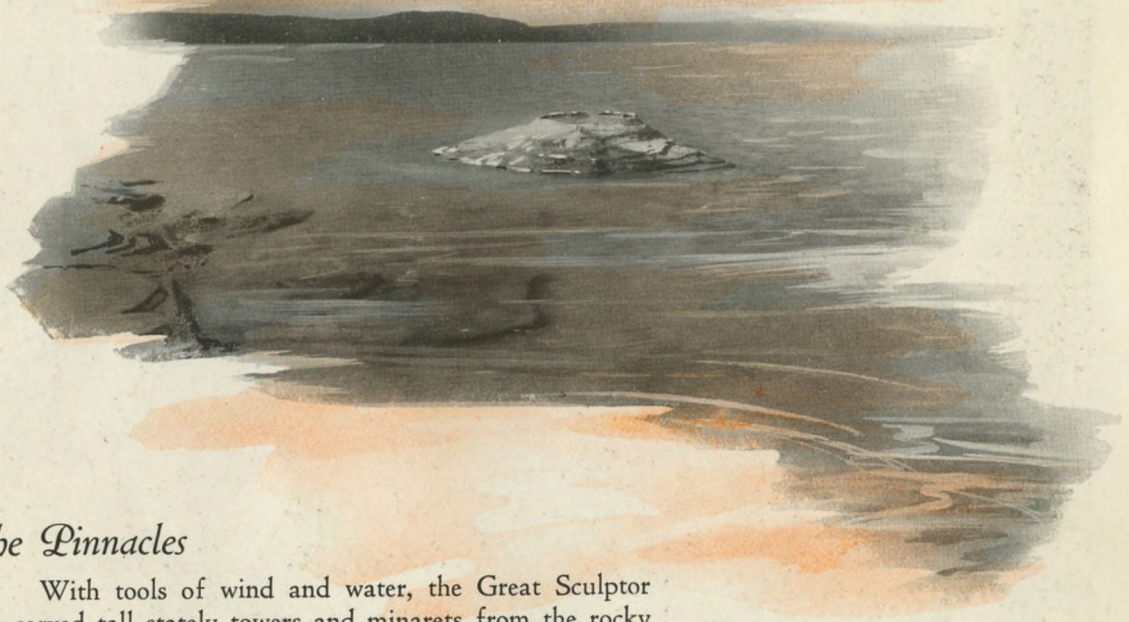


Photo by Hynes



### *The Fishing Cone*

The Fishing Cone, named by the expedition of 1870, lies on the western shore of Yellowstone Lake close to the water's edge. It has a boiling spring in its center which projects above, and is surrounded by the cold water of the lake.



### *The Pinnacles*

With tools of wind and water, the Great Sculptor carved tall stately towers and minarets from the rocky walls at the lower end of the Grand Canyon near Tower Falls . . . . . one of them, called The Needle, rises nearly 300 feet above the Yellowstone River like a solitary watch tower to guard the priceless treasures of the canyon beyond, while others serve as Nature's monument to John Colter, the discoverer of the Park, who forded the river near this spot over 120 years ago . . . . . and just across the way are long vertical slabs of stone, shaped like a great wall to confine the Wonders of the surrounding country.



# Yellowstone





## *Camp Fires*

At night at the different lodges a tremendous camp fire is usually built in a clearing among the pines. The Forest Rangers tell stories of life in the Park and explain many of its baffling phenomena—one of the most entertaining features of the Park tour.

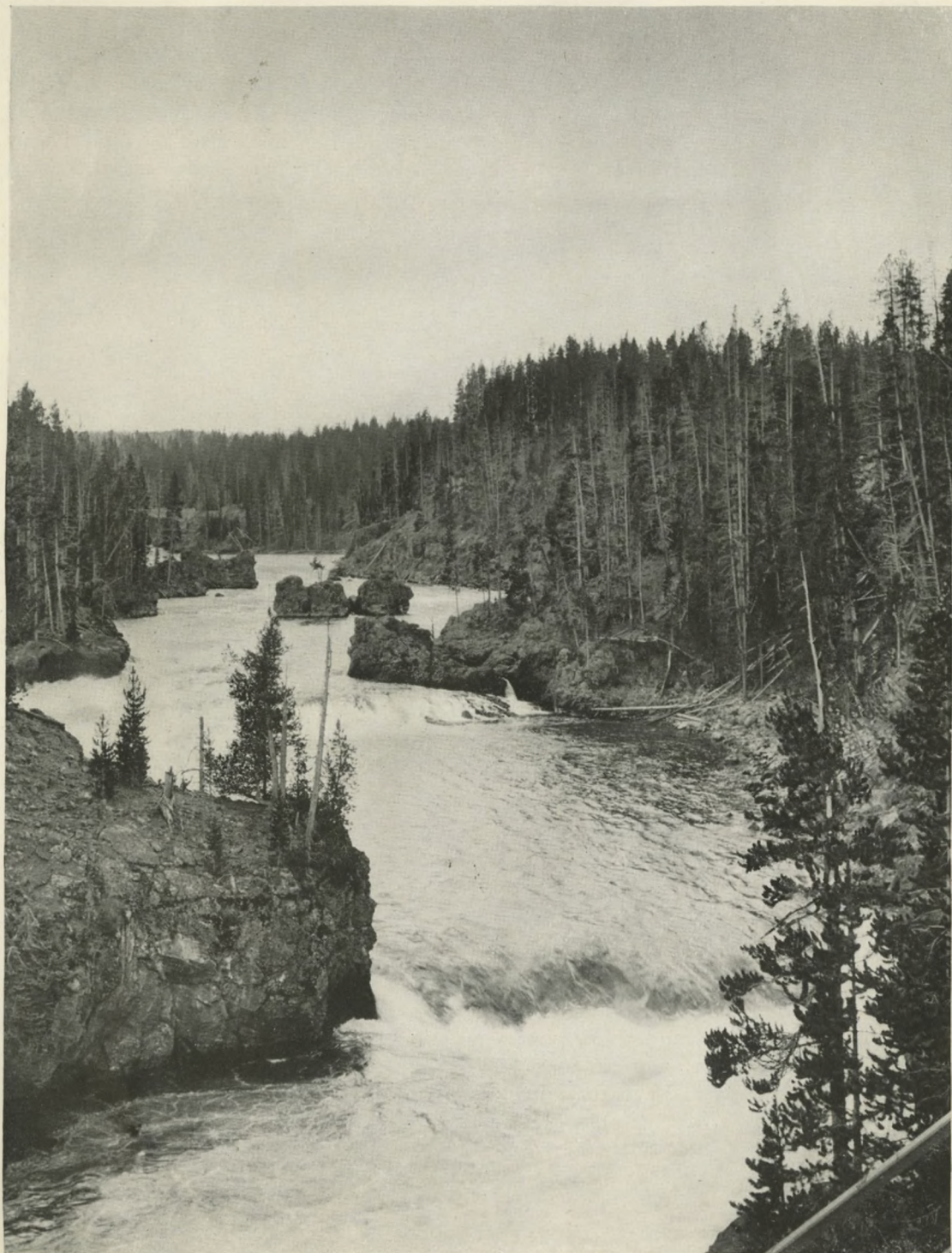


## *Lodges*

For those who prefer "roughing it in comfort" to stopping at the Park hotels, there is maintained a series of lodges or camps with rustic but comfortable accommodations. The lodges usually are made up of a central community building containing the dining room and a large recreation hall for dancing and concerts and a number of small cabins, plainly but comfortably furnished. Lodges are located at Mammoth Hot Springs, Old Faithful, the Lake, Grand Canyon, and near Tower Falls and all Park motor coaches stop at the lodges as well as the hotels.



# *Through Gallatin Gateway*





## *Norris Geyser Basin*

Just a step away from the Inferno! Here the earth's surface is a thin crust through which the old geysers constantly change their size and shape and new geysers spring into existence without warning.



## *Yellowstone River Above the Falls*

The Lake sends Yellowstone River on its way . . . . . it is peaceful and calm . . . . . soon, it enters the confines of the forests . . . . . once out of sight, it begins its mad dash over rapids and cascades, widens into Hayden Valley, twists itself into fantastic designs and then with a final rush through a niche in the dense pines, it plunges over two gigantic falls into the Canyon of the Yellowstone! And with all its eccentricities, its waters for trout fishing are the finest in the world.



# Yellowstone



© Chicago, Milwaukee, St. Paul & Pacific



## *The Petrified Forest*

Like unto Silent Historians of the Past, the trunks of a Forest turned to stone stand on the slopes of Amethyst Mountain several miles from the main highway. Petrified Tree, a specimen of this forest, is seen on the regular tour.



## *The Grand Geyser*

Across the road on the east bank of the Firehole River between Old Faithful and The Giant, a Path of Enchantment winds through a playground of gushing waters where more than a score of geysers display their individual charms and personalities. Here the Grand Geyser, roaring like a maddened god, twice a day for about 15 minutes at a time, rises in a series of eruptions higher and higher to over 200 feet where it proudly spreads itself in steady, graceful streams, like the tail of some Giant Peacock!



# Through Gallatin Gateway





YELLOWSTONE, the largest of our National Parks, created by an act of Congress, March 1st, 1872, is located in northwest Wyoming and overlaps into Montana on the north and Idaho on the west. It is approximately sixty-two miles long and fifty-four miles wide—3,348 square miles.

The Park is entirely a volcanic region of which the central portion is a broad elevated plateau rimmed with mountains rising to over 12,000 feet above the sea. Its geological formation is ash and lava—material once ejected from depths far below the surface. Positive evidence of this volcanic origin is apparent in the black glass of the obsidian cliff, the whorled and contorted rocks along the road near Mt. Washburn and the decomposed colored sands in the lower depths of the canyon. Strange as it may seem, the Park is geologically young.

The Continental Divide crosses the Park irregularly from the southeast to northwest forming the water-shed where rise rivers that ultimately reach the Atlantic and the Pacific. Mountain slopes are clothed with dark green forests, principally of lodge pole pine and douglas fir, while the broad, open expanses are carpeted with a growth of luxuriant grasses and a profusion of wild flowers.

Within the Park are more than one hundred geysers and over four thousand boiling springs, pools colored with suspended minerals, boiling caldrons of hot, colored mud, the most gorgeously colored canyon on earth, fantastical crags and towers like cathedral spires, countless waterfalls—one of them more than twice as high as Niagara—cascades, rapids, petrified forest, a mountain of volcanic glass, the largest herd of wild buffaloes in one of the largest wild animal refuges in the world, miles upon miles of forests, hundreds of streams and lakes teeming with fish—one of its lakes the highest navigable in North America—millions of wild flowers, especially on the slopes of Mt. Washburn, hotels rivaling the finest resort hotels and lodges—miles from the railroad—with an Inn at the Gallatin Gateway that is probably the most delightful and comfortable hostelry of its kind in the West. Truly, it is the Land of Wonders.

There is only one way in which these Wonders can be viewed in their most fascinating sequence and that is to enter the Park through the Gallatin Gateway—the new entrance of The Milwaukee Road.



## Milwaukee Service to Yellowstone



THE Olympian and The Columbian . . . . . famed transcontinental trains of The Milwaukee Road . . . . . take you there. But unlike Yellowstone there is no mystery, no phenomena, about these trains. As splendid as the Park is weird, they carry you in luxurious comfort to that newest of Yellowstone Gateways, Gallatin, where the Gallatin Gateway Inn, new, modern and astonishingly attractive provides you with a welcome of comfort and good cheer which is a fitting forerunner of the joys to follow.

Whether you come from the East or West, The Olympian or The Columbian will carry you through mountain regions of surpassing grandeur..the austere grandeur that belongs to the mighty Rockies alone. And for a good part of the way your train will be hauled by electric power . . . . the white coal of the mountains . . . . that assures you of more comfortable riding and a greater freedom from dust and dirt than with steam operation. And for 660 miles of its main transcontinental line The Milwaukee Road is thus electrified!

Both trains carry the usual observation cars and in addition they carry, during the summer season, through the mountain sections, open-air observation cars which give passengers the



delightful feeling of a more intimate touch with the passing scenery as well as a much greater scope of vision.

But perhaps the most satisfying feature of Milwaukee service is the meals in the dining cars. For Milwaukee meals are marvels of excellence in the quality and variety of food and in their preparation and service. And the dining cars themselves, in their beauty and refinement, give the last dainty touch of perfect environment which rounds out the satisfaction of a perfect meal perfectly served.

Last but not least in Milwaukee service is the courtesy and consideration which every employee from the least to the greatest is expected to accord the traveler in all his relations with the company, from his first casual inquiry about fares or schedules till the completion of his journey. The Milwaukee Road feels it is rendering a worth-while public service and wishes to do so in a manner so pleasing and satisfactory to the traveler that it will be his pleasure to use The Milwaukee Road again and again and to recommend it to his friends.

Any Milwaukee representative (see list on last page) will be glad to furnish copies of our folder "Gallatin Gateway into Yellowstone Park" which contains complete details of Yellowstone Park fares, routes and schedules. Also folders and booklets containing maps and describing and illustrating Milwaukee service and tours to the Pacific Coast, Alaska, the Orient and Round the World and also to the resorts of Minnesota, Wisconsin, the Grand Lakes region, Excelsior Springs and elsewhere.



# Through Gallatin Gateway

## Chicago, Milwaukee, St. Paul and Pacific Railroad

### INFORMATION AND TRAVEL BUREAUS

ABERDEEN, S. D., "Milwaukee" Station, 1 North Main St., Phone 2325.....	O. F. Waller, Div. Pass'r Agent
ABERDEEN, WASH., 223 Finch Bldg., Phone 5148.....	F. A. Swanson, Traveling Pass'r Agent
ATLANTA, GA., 717 Healey Bldg., Phone Walnut 6585.....	G. C. Hiltel, General Agent
BELLINGHAM, WASH., 1100 Railroad Ave., Phone 616.....	Geo. W. Blair, Traveling Pass'r Agent
BELOIT, WIS., "Milwaukee" Station, Phone 257.....	L. J. Lightfield, Pass'r and Ticket Agent
BOSTON (9), MASS., 552 Old South Bldg., Phone Liberty 9256.....	F. D. Dodge, General Agent
BREMERTON, WASH., 224 Front St. (Bremer Bldg.), Phone 722.....	A. F. Lee, Agent
BUFFALO, N. Y., 204-A-Ellicott Square Bldg., Phone Seneca 0634.....	R. F. Trumper, General Agent
BUTTE, MONT., 30 West Park St., Phones 5805 and 5806.....	M. G. Murray, Division Pass'r Agent
CEDAR RAPIDS, IOWA, "Milwaukee" Station, 401 First Ave., Phone 507.....	C. L. Sherwood, Pass'r and Ticket Agent
CHICAGO, ILL., Room 307-"100 W. Monroe Bldg.", Phone Central 7600.....	B. J. Schilling, General Agent Pass'r Dept. A. Tansley, Traveling Passenger Agent
CINCINNATI, OHIO, 204 Dixie Terminal, Phone Main 5010.....	G. C. Armstrong, General Agent
CLEVELAND, OHIO, 937 Union Trust Bldg., Phone Main 2457.....	F. E. Clark, General Agent
DALLAS, TEXAS, 1315-1316 Pratorian Bldg., Phone X 5291.....	J. M. Allen, General Agent
DAVENPORT, IOWA, Union Station, Foot of Harrison St., Phone Dav. 880.....	A. Mallum, Division Pass'r Agent
DENVER, COLO., 217 Patterson Bldg., Phone Main 7940.....	J. C. Fitzgerald, General Agent
DES MOINES, IOWA, Union Station, Phone Walnut 464.....	H. W. Warren, Division Pass'r Agent
DETROIT, MICH., 806 Transportation Bldg., Phones Randolph 6854-5.....	H. W. Steinhoff, General Agent
DUBUQUE, IOWA, Fifth and White Sts., Phone 686.....	W. F. Keefe, Division Pass'r Agent
DULUTH, MINN., 322 West Superior St., Phones Melrose 524 and 525.....	G. M. Bowman, General Agent
EVERETT, WASH., 1515 Hewitt Ave., Phone Main 130.....	H. H. Tavenner, General Agent
EXCELSIOR SPRINGS, MO., "Milwaukee" Station, Phone 177.....	H. F. Owen, Pass'r and Ticket Agent
GALLATIN GATEWAY, MONT., "Milwaukee" Station.....	Albert F. Becker, Pass'r and Ticket Agent R. W. Myles, Traveling Pass'r Agent F. A. Kennedy, Traveling Pass'r Agent
GREAT FALLS, MONT., 226 2d Ave. South, Phone 9696.....	M. E. Randall, Division Pass'r Agent
GREEN BAY, WIS., "Milwaukee" Station, Phone Adams 866.....	Paul Wilson, Division Passenger Agent
INDIANAPOLIS, IND., 717 Merchants Bank Bldg., Phone Lincoln 1077.....	Wm. Pasho, General Agent
JANESVILLE, WIS., "Milwaukee" Station, Phone 191.....	J. M. Brown, Pass'r and Ticket Agent
KANSAS CITY, MO., 817 Walnut St., Phones Main 6390, Victor 2546.....	E. G. Woodward, General Agent Pass'r Dept.
LA CROSSE, WIS., "Milwaukee" Station, Phone 76.....	H. J. Troger, Pass'r and Ticket Agent
LEWISTOWN, MONT., "Milwaukee" Passenger Station, Phone 166.....	G. G. Conrod, Pass'r and Ticket Agent
LOS ANGELES, CALIF., 701 Van Nuys Bldg., Phone Trinity 9555.....	F. C. Fairbairn, General Agent
MADISON, WIS., "Milwaukee" Station (Washington Ave.), Phone Badger 6300.....	A. B. Batty, City Pass'r Agent
MASON CITY, IOWA, 9th St. and S. Pennsylvania Ave., Phone 324.....	W. F. Cody, Division Pass'r Agent
MILES CITY, MONT., 507 Main St. (Olive Hotel), Phone 149.....	J. J. Foley, Division Pass'r Agent
MILWAUKEE, WIS., 405 E. Water St., Phone Broadway 5720.....	J. C. Prien, General Agent Pass'r Dept.
MINNEAPOLIS, MINN., 45 S. Seventh St. (Radisson Hotel), Phone Main 3441.....	J. J. Osie, City Pass'r Agent
MISSOULA, MONT., Higgins Ave. and Third St., Phone 319.....	M. J. Emmert, Pass'r and Ticket Agent
MOBILE, ILL., "Milwaukee" Passenger Station, Phone 733.....	J. C. Lang, Pass'r and Ticket Agent
NEW ORLEANS, LA., 1522 Canal Bank Bldg., Phone Main 6449.....	W. H. Rogers, General Agent
NEW YORK, N. Y., 547 Fifth Ave., at 45th St., Phone Vanderbilt 3721.....	G. L. Cobb, General Agent Pass'r Dept.
OMAHA, NEB., 306 S. Sixteenth St., Phone Jackson 4481.....	W. E. Bock, General Agent Pass'r Dept.
OTTUMWA, IOWA, Jefferson St., Phone 776.....	J. W. Calvert, Pass'r and Ticket Agent
PHILADELPHIA, PA., 1006 Finance Bldg., Phones Rittenhouse 0891-2.....	A. H. Murphy, General Agent
PITTSBURGH, PA., 201 Park Building, Phone Atlantic 2438.....	H. L. McLaughlin, General Agent
PORTLAND, ORE., 180 Sixth St. (Pacific Bldg.), Phone Beacon 7538.....	C. H. McCrimmon, District Pass'r Agent
RACINE, WIS., 7th and Wisconsin Sts., Phone Jackson 6500.....	H. F. C. Brown, City Passenger and Ticket Agent
RAYMOND, WASH., 6th and Franklin Sts., Phone 139.....	W. A. Pease, Pass'r and Ticket Agent
ROCKFORD, ILL., 609 South Main St., Phone Main 120.....	W. A. Johnson, General Agent
ROCK ISLAND, ILL., "Milwaukee" Station, Phone 363.....	W. E. Biggs, Pass'r and Ticket Agent
ST. LOUIS, MO., 2003 Railway Exchange, Phone Chestnut 0337.....	C. J. Peterson, General Agent
ST. PAUL, MINN., 365 Robert St., Phone Cedar 4491.....	T. A. Morken, General Agent Pass'r Dept.
SALT LAKE CITY, UTAH, 503 Cliff Building, Phone Wasatch 3625.....	H. W. Howell, General Agent
SAN FRANCISCO, CALIF., 661 Market St. (Palace Hotel), Phone Garfield 5334.....	R. F. Randall, District Pass'r Agent
SEATTLE, WASH., 4th Ave. and Union St., Phone Eliot 6800.....	J. F. Bahl, Ass't General Pass'r Agent R. E. Carson, General Agent Passenger Department
SIoux CITY, IOWA, 503 Fourth St. (Hotel Martin), Phone 57086.....	B. O. Searles, Division Pass'r Agent
SIoux FALLS, S. D., "Milwaukee" Station, Phone 134.....	R. W. Riewert, Pass'r and Ticket Agent
SPOKANE, WASH., Sprague Ave. and Post St., Phones Main 4116 and 2261.....	J. G. Cain, City Pass'r Agent
TACOMA, WASH., 112 S. Ninth St., Phone Main 2100.....	F. A. Valentine, City Pass'r Agent
TERRE HAUTE, IND., 300 Rea Bldg., Phone Wabash 1296.....	P. M. Fagan, Division Pass'r Agent
TULSA, OKLA., 925 Kennedy Building, Phone 2-9921.....	H. S. Zane, General Agent
VANCOUVER, B. C., 533 Granville St., Phone Seymour 165.....	F. J. Calkins, General Agent
VICTORIA, B. C., 902 Government St., Phone 72.....	A. P. Chapman, General Agent
WINNIPEG, MAN., 1105 McArthur Bldg., Phone A 5161.....	J. M. Cunningham, General Agent
WINONA, MINN., "Milwaukee" Station, Phone Tri-State 1198.....	L. W. Smock, Pass'r and Ticket Agent

W. B. DIXON, General Passenger Agent, Chicago, Ill.  
GEO. B. HAYNES, Passenger Traffic Manager, Chicago, Ill.









CHICAGO  
**MILWAUKEE**  
AND ST. PAUL  
PACIFIC