



# CALIFORNIA

WINTER'S SUMMER GARDEN

CALIFORNIA

WINTER'S SUMMER GARDEN

# CALIFORNIA







CHICAGO, MILWAUKEE & ST. PAUL RAILWAY

COPYRIGHT 1911 by F.A. MILLER



The CHICAGO  
MILWAUKEE  
AND ST. PAUL  
RIVER



**I**N GOING to California you will make your trip all the more enjoyable if you name your route to the ticket agent. There is but one California, and when you consider excellence of service, elegance of equipment and comfort of travel, there is but one way to travel—via The San Francisco Overland Limited of the Chicago, Milwaukee & St. Paul-Union Pacific-Southern Pacific Line.

Leaving Union Passenger Station, Chicago, at 8.30 p. m., this famous train arrives at principal points in California the third day. With its electric lighting, its observation parlor and club-room, its ample dressing-rooms, its unsurpassed sleeping and dining service, the San Francisco Overland Limited embodies all the luxuries of railroad travel thus far conceived.

**C**ALIFORNIA! For generations the name has brought with it visions of conquests, wealth and beauty. Today it is not the religious ardor of the friars nor the search for gold by miners that leads tens of thousands to California every year. The tourist and health-seeker find a subtle charm in the climate and the environments of the sea and mountain and all that is grand and beautiful. Nowhere except in California can one behold such opposites—millions of roses blooming in midwinter at the foot of some gray old mountain, the summit white with its perpetual crown of

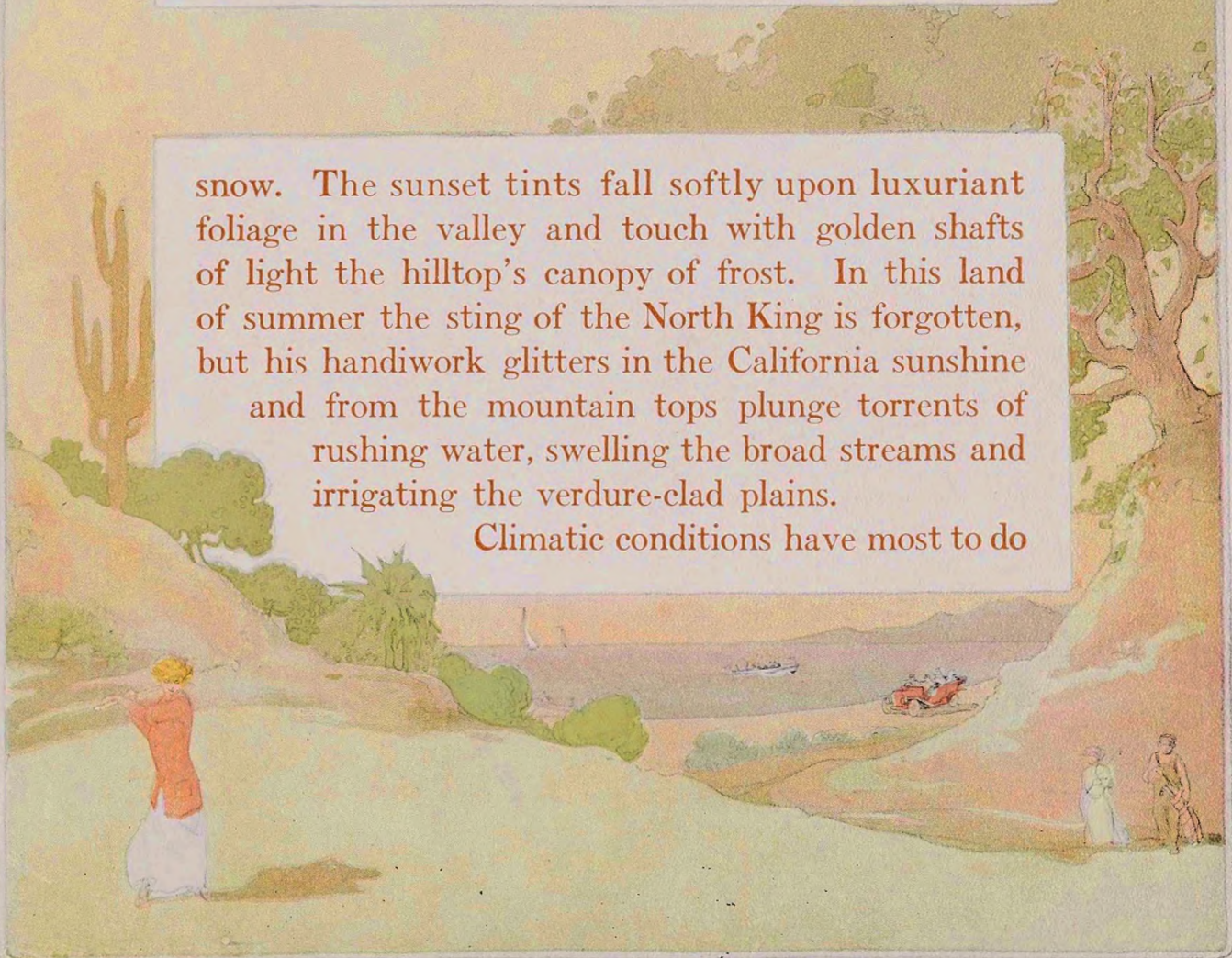






snow. The sunset tints fall softly upon luxuriant foliage in the valley and touch with golden shafts of light the hilltop's canopy of frost. In this land of summer the sting of the North King is forgotten, but his handiwork glitters in the California sunshine and from the mountain tops plunge torrents of rushing water, swelling the broad streams and irrigating the verdure-clad plains.

Climatic conditions have most to do





with the attract-  
iveness of California.

In California you can pick roses in  
January and throw snowballs in July; you can  
sail for miles along the sunny Pacific in winter, and  
you can find coolness, shade and the air of springtime  
among the hills in midsummer.

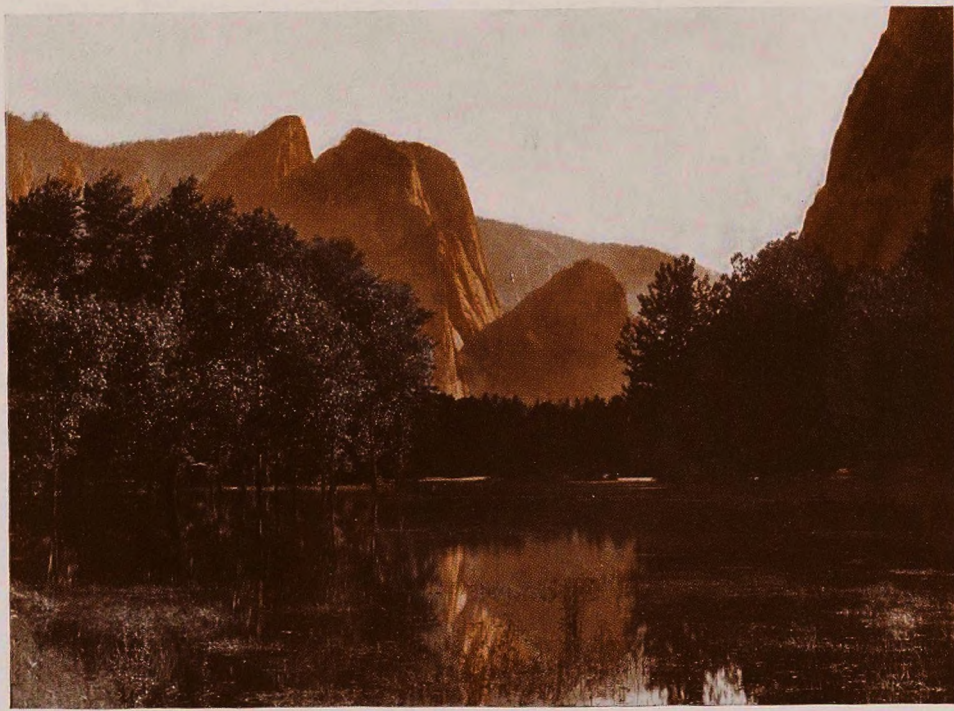
Increasing thousands who spend the winter in  
California testify to the delights of Winter's Summer  
Garden. They enjoy fishing, sailing, bathing, riding,  
driving and a score of other outdoor sports for which  
opportunities equaled nowhere else in America are

abundantly offered. The hotels and boarding-houses are excellent, and their rates are reasonable. You will find a month in California cheaper than staying at home, and the benefits cannot be counted.

San Francisco, rebuilt within four years, at a cost of over \$500,000,000, is a city greater and grander in every way than the one destroyed. The 1910 census shows a population of nearly half a million, and including the suburbs, about three-quarters of a million, giving the California metropolis first place among the cities of

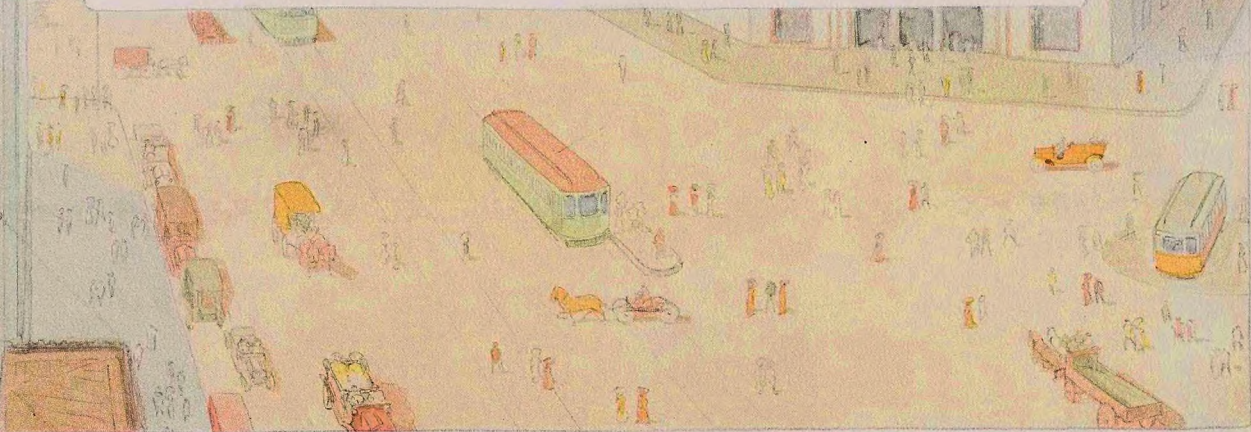


the Pacific Coast. In October, 1910, the sum of \$7,500,000 was subscribed by the people of San Francisco for the Panama-Pacific International Exposition, to be held in 1915. Since then the amount has been increased by bond issues to \$17,500,000. The new San Francisco has all that the old city had to entertain and charm the visitor, and a great deal that the old city had not. For one thing, the hotel accommodations are more commodious and complete than in any other American city. If the entire army of the United States (90,000) marched into San Francisco today every man could be given





comfortable accommodations before nightfall. San Francisco is the most Bohemian and cosmopolitan city in the United States, and its hotels and cafes are world-renowned. The rides and drives in and about the metropolis and the little journeys of a day from the city help to make it the Mecca of all tourists. Measured laterally, the United States presents five capital cities—New York, Chicago, San Francisco, Honolulu and Manila. Of these,



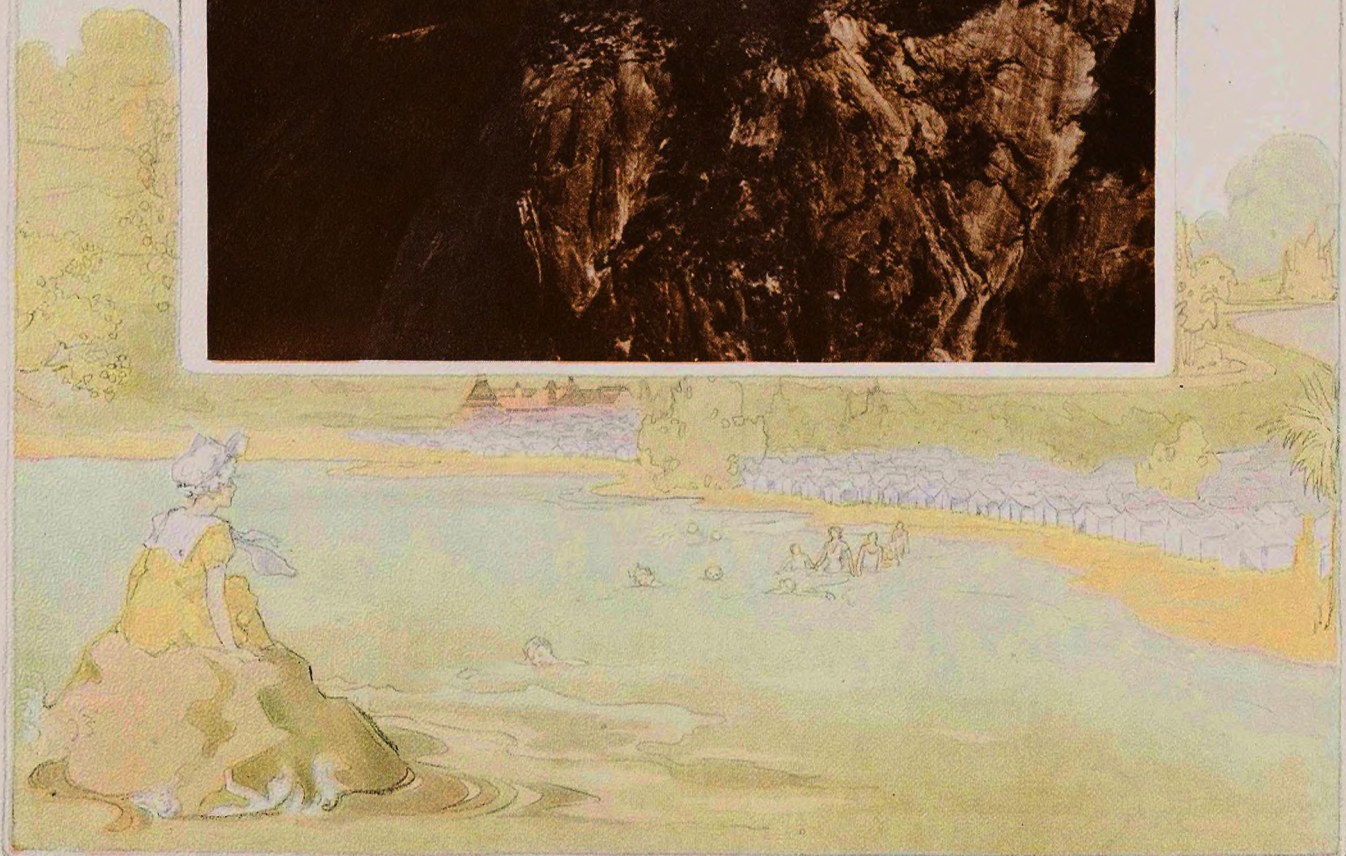
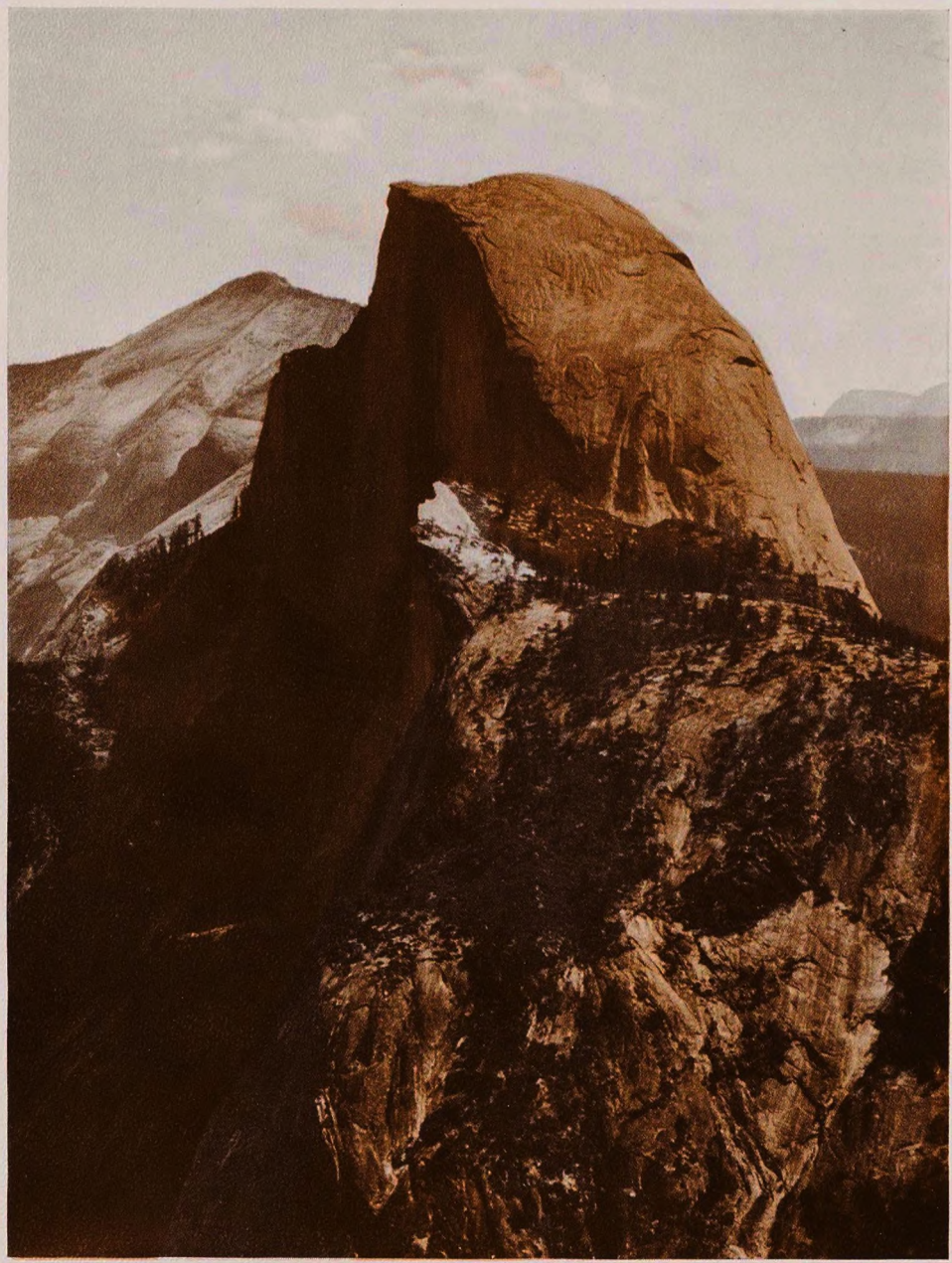


San Francisco is the median capital, not the exact geographical median, because it is nearer east than west—nearer to New York than to Manila.

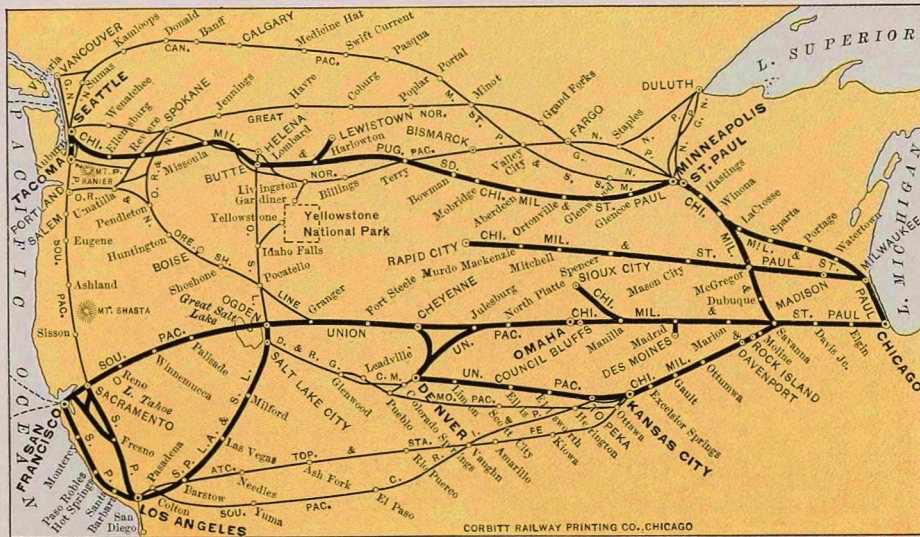
Yosemite Park, now reached by rail, with 36,000 acres of marvelous scenery, is the crowning triumph of California. One of the most delightful rides in California is along the Coast Line, from San Francisco to Los Angeles. Redlands, Riverside and Santa Monica

will please the most critical visitor. At Monterey is the famous Hotel Del Monte and the seventeen-mile drive of shaded avenues with handsome homes. Pasadena lies in the midst of a fertile section, with beautiful orange groves and fruit fields all about it. During most of the year every garden in Pasadena is a mass of bloom, this riot of color backed by the towering heights of the Sierra Madres. Twenty odd miles out in the Pacific is Santa Catalina Island. These and many other ideal resorts along the coast will combine to make your trip to California—"Winter's Summer Garden"—the trip of a lifetime.









Chicago, Milwaukee & St. Paul Railway and Connections

## PASSENGER REPRESENTATIVES Chicago, Milwaukee & St. Paul Railway

**BOSTON, 260 Washington Street**  
J. H. SKILLEN, New England Passenger Agent

**BUFFALO, 303 Main Street**  
G. H. WESCOTT, Commercial Agent

**CHICAGO, 95 Adams Street**  
C. N. SOUTHER, General Agent Passenger Dept.

**CINCINNATI, 204 Traction Building**  
C. C. MORDOUGH, Traveling Passenger Agent

**CLEVELAND, 426 Superior Ave., N. W.**  
E. G. HAYDEN, Traveling Passenger Agent

**DAVENPORT, IOWA, 303 Brady Street**  
P. L. HENRICH, Commercial Agent

**DENVER, 821 17th Street**  
EDW. MAHONEY, District Passenger Agent

**DES MOINES, 410 Walnut Street**  
C. E. HILLIKER, Division Passenger Agent

**DETROIT, 212 Majestic Building**  
H. W. STEINHOFF, Michigan Passenger Agent

**DUBUQUE, IOWA,**  
S. N. BAIRD, Division Passenger Agent

**HOUGHTON, MICH., 78 Sheldon Street**  
H. E. STEWART, Commercial Agent

**KANSAS CITY, 907 Main Street**  
G. L. COBB, Southwestern Passenger Agent

**LIVERPOOL, ENG.,** } 18 Chapel Street  
                                  } 9 James Street

J. JACKSON & SONS

**LOS ANGELES, 130 West 6th Street**  
E. K. GARRISON, Commercial Agent

**J. H. HILAND, Vice-President**  
Chicago

**MADISON, WIS.**  
W. W. WINTON, District Passenger Agent

**MASON CITY, IOWA**  
W. F. CODY, Division Passenger Agent

**MILWAUKEE, 400 East Water Street**  
W. J. BOYLE, General Agent Passenger Department

**MINNEAPOLIS, 328 Nicollet Avenue**  
C. R. LEWIS, City Passenger and Ticket Agent

**NEW YORK, 381 Broadway**  
W. W. HALL, General Agent

**OMAHA, 1524 Farnam Street**  
F. A. NASH, General Western Agent

**OTTUMWA, IOWA**  
W. C. PARKER, Division Passenger Agent

**PHILADELPHIA, 818 Chestnut Street**  
GEO. J. LINCOLN, Commercial Agent

**PITTSBURG, Room D, Park Building**  
JOHN R. POTT, District Passenger Agent

**SALT LAKE CITY, 106 W. Second South St.**  
C. S. WILLIAMS, Commercial Agent

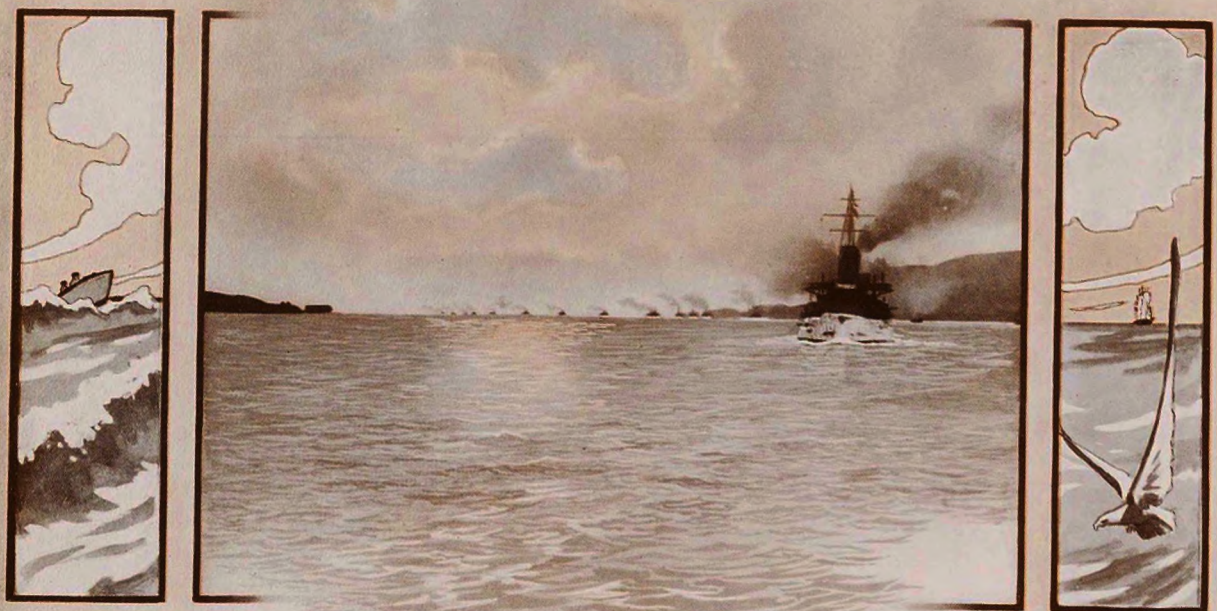
**SAN FRANCISCO, 22 Powell Street**  
L. E. STANTON, General Agent

**SIOUX CITY, 501 Fourth Street**  
C. N. CURTIS, Division Passenger Agent

**ST. PAUL, 365 Robert Street**  
W. B. DIXON, Assistant General Passenger Agent

**TORONTO, 8 King Street, East**  
A. J. TAYLOR, Canadian Passenger Agent

**F. A. MILLER, General Passenger Agent**  
Chicago



CORNETT  
PRINTING  
COMPANY  
CHICAGO



