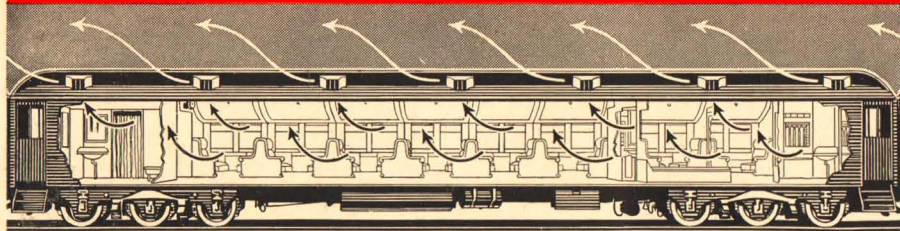


WHAT THE PULLMAN COMPANY OFFERS TO TRAVELERS....

PULLMAN CARS, operating on substantially all the railroads, carry Pullman safety, comfort and quality throughout North America. They draw into a close-knit and co-ordinated system the travel facilities of nearly half the railroad mileage of the world.

OVER 9,500 Pullman cars, as varied as the services to which they are adapted, cover this railway gridiron, providing facilities unparalleled anywhere else. Pullman cars were the pioneers, as they are now the standard, of de luxe railroad equipment.

VENTILATION



MOVEMENTS OF AIR CURRENTS IN AND FROM A PULLMAN

THERE is more fresh air in a Pullman than almost anywhere else indoors. Analysis of thousands of air samples has proved it. Pullman exhaust ventilation expels the used air, brings in fresh; makes no drafts. Pullman ventilators will discharge from 130,000 to 180,000 feet of air hourly from a moving car, changing the air so completely and so often that it simply hasn't a chance to get stale. A wheel or elsewhere, there's no better ventilation system.

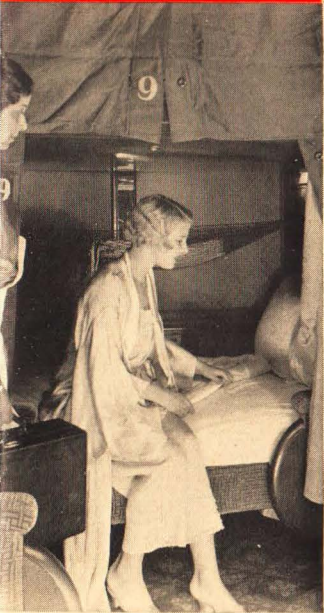
PULLMAN SERVICE MADE LAND TRAVEL, FOR THE FIRST TIME IN HUMAN EXPERIENCE, A PLEASURE AND AN OPPORTUNITY RATHER THAN A GRIM INFLICTION.

LIGHTING

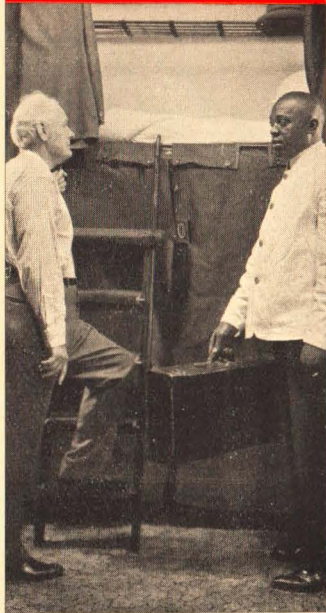
SCORES of electric lights illumine every nook and cranny of the car. Once, there were two candles! Then oil, gas, till Pullman applied electricity—the last word. Nothing has added so much to travel comfort; light everywhere it's required, yet the traveler in his berth is assured all the darkness he needs for sleep.



LOWER



UPPER



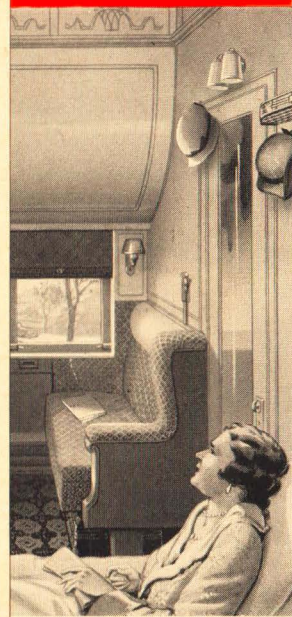
SECTION



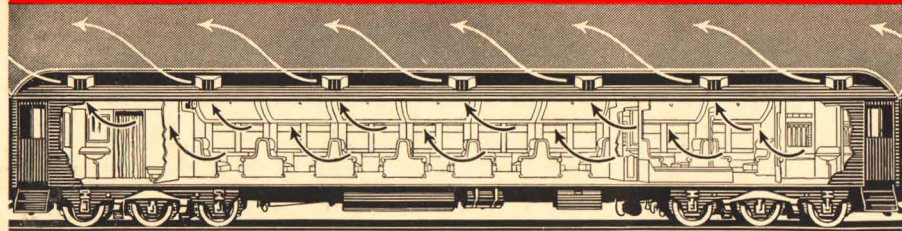
BED ROOM



DRAWING ROOM



VENTILATION



MOVEMENTS OF AIR CURRENTS IN AND FROM A PULLMAN

THERE is more fresh air in a Pullman than almost anywhere else indoors. Analysis of thousands of air samples has proved it. Pullman exhaust ventilation expels the used air, brings in fresh; makes no drafts. Pullman ventilators will discharge from 130,000 to 180,000 feet of air hourly from a moving car, changing the air so completely and so often that it simply hasn't a chance to get stale. A wheel or elsewhere, there's no better ventilation system.

PULLMAN SERVICE MADE LAND TRAVEL, FOR THE FIRST TIME IN HUMAN EXPERIENCE, A PLEASURE AND AN OPPORTUNITY RATHER THAN A GRIM INFLECTION.

LIGHTING

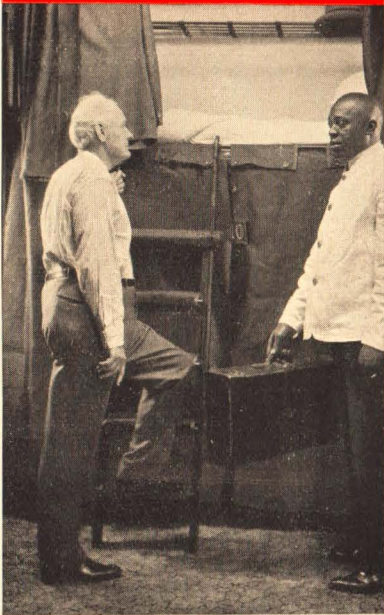
SCORES of electric lights illumine every nook and cranny of the car. Once, there were two candles! Then oil, gas, till Pullman applied electricity—the last word. Nothing has added so much to travel comfort; light everywhere it's required, yet is assured all the darkness h



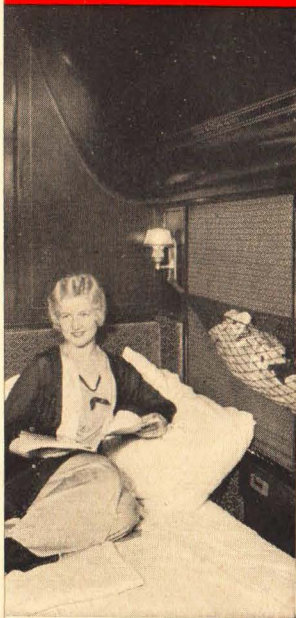
THE LOWER BERTH, 6 ft. 2 $\frac{3}{4}$ in. long, 41 $\frac{3}{16}$ in. wide; coil spring and hairtop mattress; electric lights; shelf, hangers, hammock for clothes and luggage; electric call bell, sash ventilator, mirror; luxurious pillows, profusion of finest blankets and linen. No better bed courts sleep anywhere; nowhere are the satisfactions of real rest more fully assured.

THE UPPER BERTH, reached by a safety ladder, with all the lower's facilities, costs considerably less. Similarly ample conveniences for clothes and luggage; same roomy, inviting bed and bedding, electric lights, excellent ventilation. Every detail of Pullman service.

UPPER



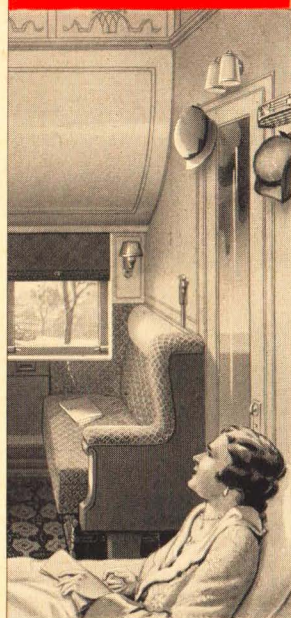
SECTION



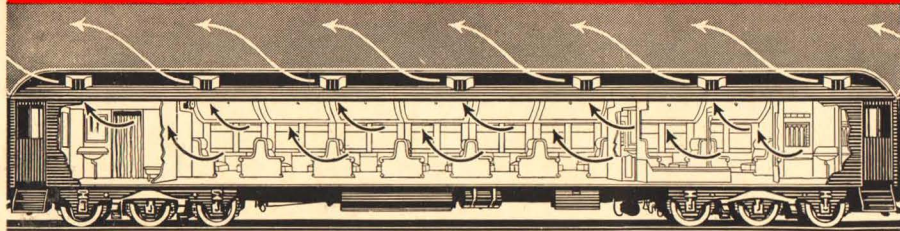
BED ROOM



DRAWING ROOM



VENTILATION

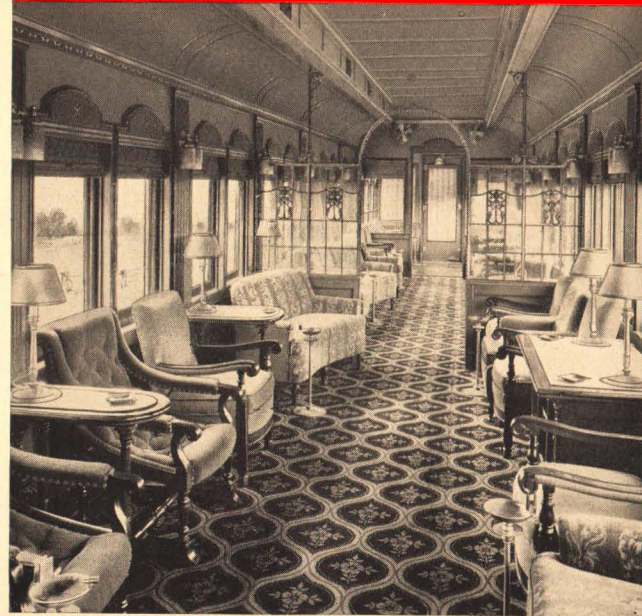


MOVEMENTS OF AIR CURRENTS IN AND FROM A PULLMAN

THERE is more fresh air in a Pullman than almost anywhere else indoors. Analysis of thousands of air samples has proved it. Pullman exhaust ventilation expels the used air, brings in fresh; makes no drafts. Pullman ventilators will discharge from 130,000 to 180,000 feet of air hourly from a moving car, changing the air so completely and so often that it simply hasn't a chance to get stale. Awheel or elsewhere, there's no better ventilation system.

**PULLMAN SERVICE MADE LAND TRAVEL, FOR THE FIRST TIME IN
AN OPPORTUNITY RATHER THAN A G**

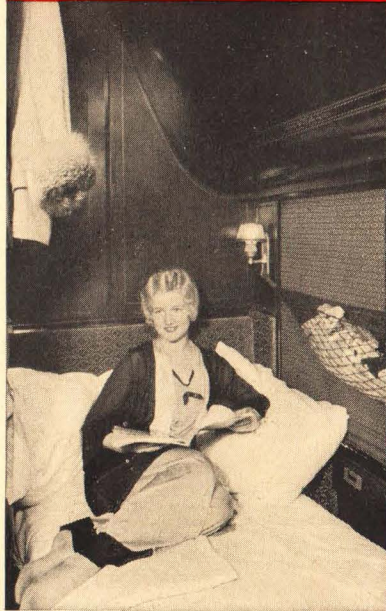
NEW LOUNGE CAR



THE SECTION, for a single passenger, best accommodation procurable on one rail fare. Passenger holds both seats: privacy day and night. Upper berth remaining closed, lower is prepared at night with both mattresses, extra pillows and blankets. Affords a roomy, private apartment for dressing: all at new reduced rate—cost of lower plus half the cost of upper.

THE LOUNGE CAR—the newest thing on wheels. Chairs of all types and all of them comfortable. Ideal for enjoyment of scenery, inviting to easy sociability; in most cases has buffet service. The world's most fetching railroad vehicle. No added charge.

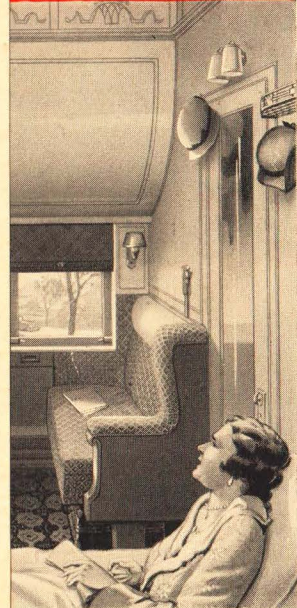
SECTION



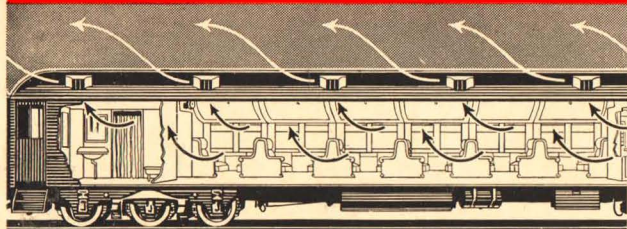
BED ROOM



DRAWING ROOM



VENTILATION

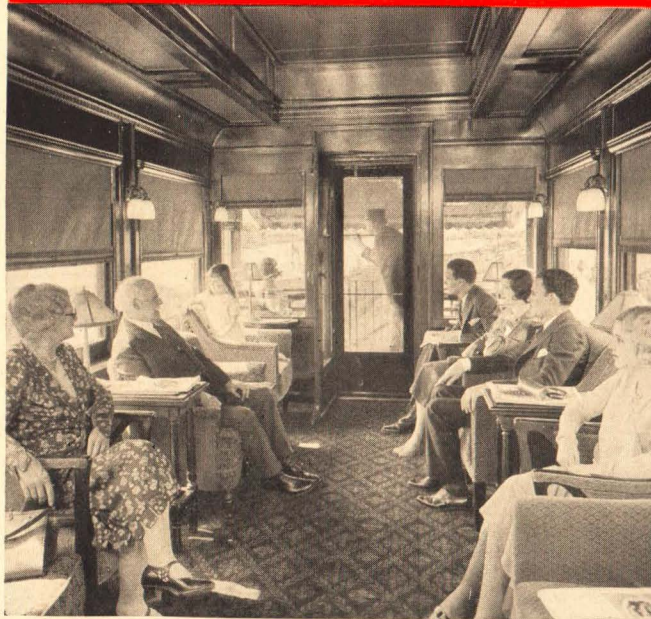


MOVEMENTS OF AIR CURRENTS IN AND FROM

THERE is more fresh air in a Pullman than elsewhere indoors. Analysis of thousands of air samples shows that Pullman exhaust ventilation expels the used air. Pullman ventilators will displace 180,000 feet of air hourly from a moving car so completely and so often that it simply hasn't time to get stale. A wheel or elsewhere, there's no better ventilation.

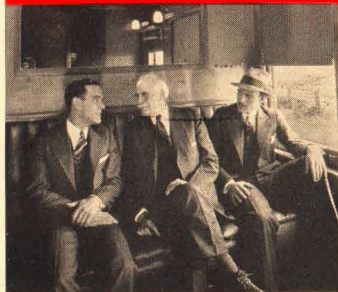
PULLMAN SERVICE MADE LAND TRAVEL
AN OPPORTUNITY

OBSERVATION ROOM



THE OBSERVATION CAR is the train's "living room"; generous windows and observation platform. With lavish lighting, easy, informal seating, writing facilities, magazines, it translates traveling tedium into relaxation. Available to all Pullman patrons without extra cost; it is the real social center of the train, a living room, with sun-room or open platform.

FORUM



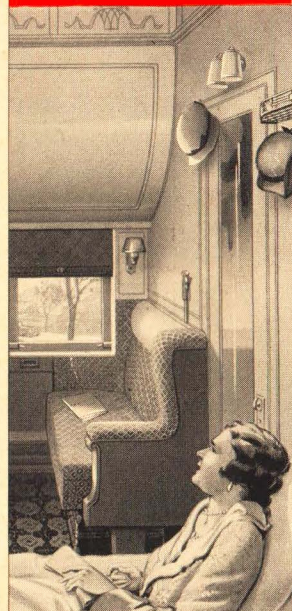
THE SMOKING ROOM is America's anecdote exchange; headquarters for political and general discussion. The train's gathering-place for masculinity at its best.

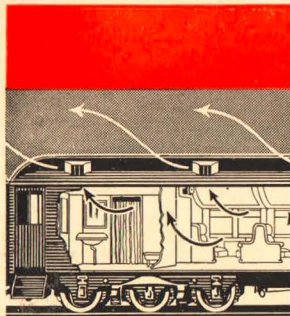
THE BED ROOM appeals to a large class of travelers. Full toilet facilities; stationary bed, some convertible into a day lounge; folding washstand with mirror and side lights above; drop shelf for writing or meal service; luggage space under bed, and in roomy racks. Cheval mirror inside door. Air intake in door, electric fan, thermos water bottle, individual heat control. Two rooms may be secured *en suite* if desired. This arrangement provides the most appealing mode of travel for family or other groups of persons wishing individual quarters with all conveniences.

BED ROOM



DRAWING ROOM

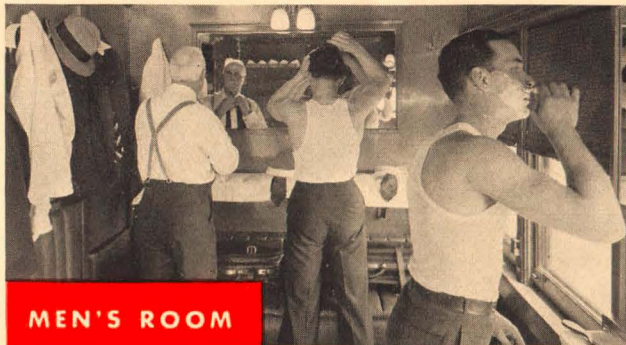




MOVEMENTS C

THERE is more f
else indoors. An
it. Pullman exhaust
makes no drafts. Pul
to 180,000 feet of air
so completely and so c
Awheel or elsewhere.

PULLMA



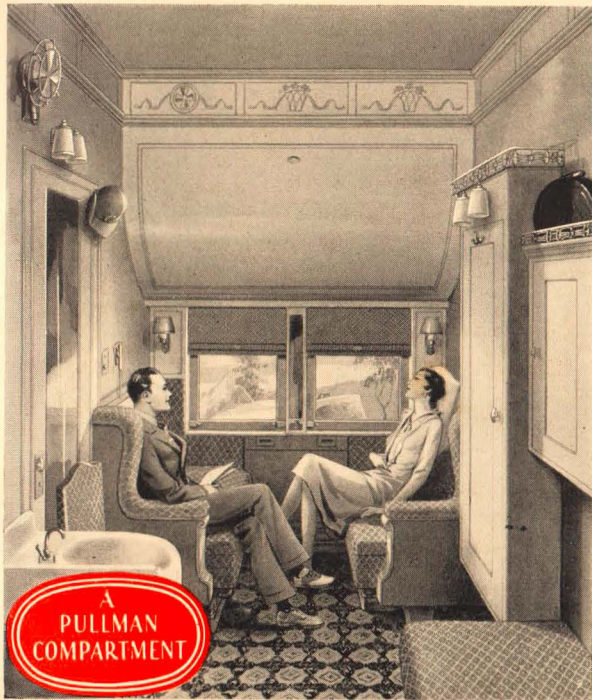
MEN'S ROOM



WOMEN'S ROOM

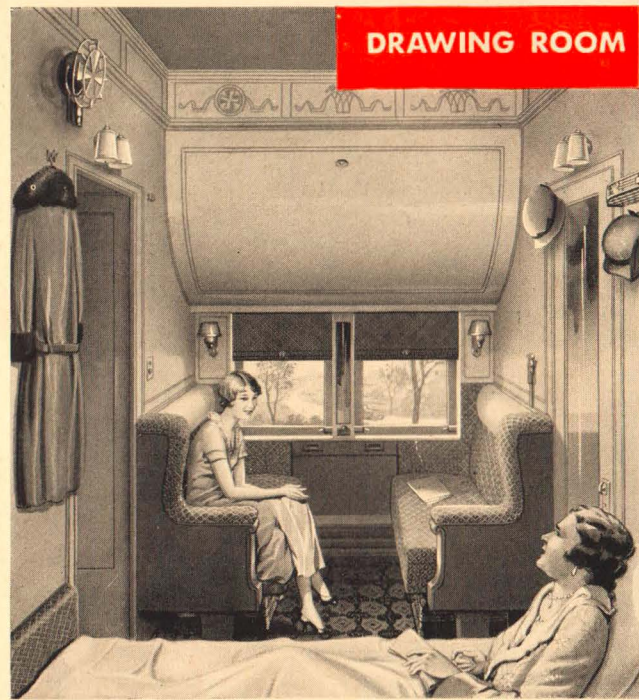
MEN'S WASHROOM, with area up to 64.3 square feet; nickel or porcelain wash-bowls; dental lavatory; lavish supplies of towels and soap; large mirrors; chairs and lounge, clothes hooks and shelf:—all toilet appurtenances. Everything provided, yet so compact, so skilfully arranged, as to give the effect of spaciousness.

THE WOMEN'S WASHROOM in all more recent cars is of 50.5 square feet area; with three generous sized mirrors, three wash bowls and dental lavatory, it has all the feminine air and accessories appropriate to its purpose. Under the row of mirrors, a dressing table 6 feet 8 inches long; three chairs; racks and hooks for clothing; generous supply of toilet linen.



THE DRAWING ROOM, final word in Pullman luxury; an apartment with individual toilet facilities; 58 square feet floor space; upper and lower berth; a long, wide lounge invites those daytime naps so grateful to travelers, and makes down into an excellent bed.

THE COMPARTMENT, slightly less roomy, has complete toilet facilities, upper and lower berth. In the newer types of cars clothes lockers and cabinets for little personal belongings are standard compartment equipment.



PARLOR CAR



THE PARLOR CAR provides traveling comfort on daylight trips as the sleeper does by night. The parlor car passenger gets a ticket which entitles him to a particular seat. Every parlor car seat is a window seat. The absence of crowding, the maximum of space and attention of an experienced porter make parlor car service pleasant and desirable.

PULLMAN STANDARDS
SAFETY
COMFORT
SERVICE
PROGRESS

PUBLISHED BY THE PULLMAN COMPANY, CHICAGO

Printed in U. S. A.