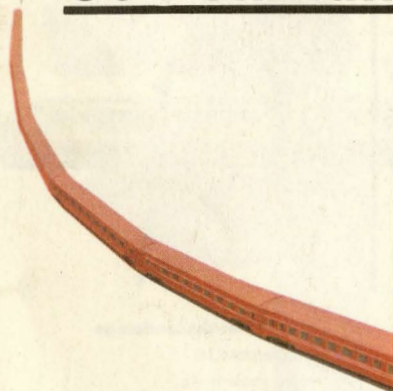
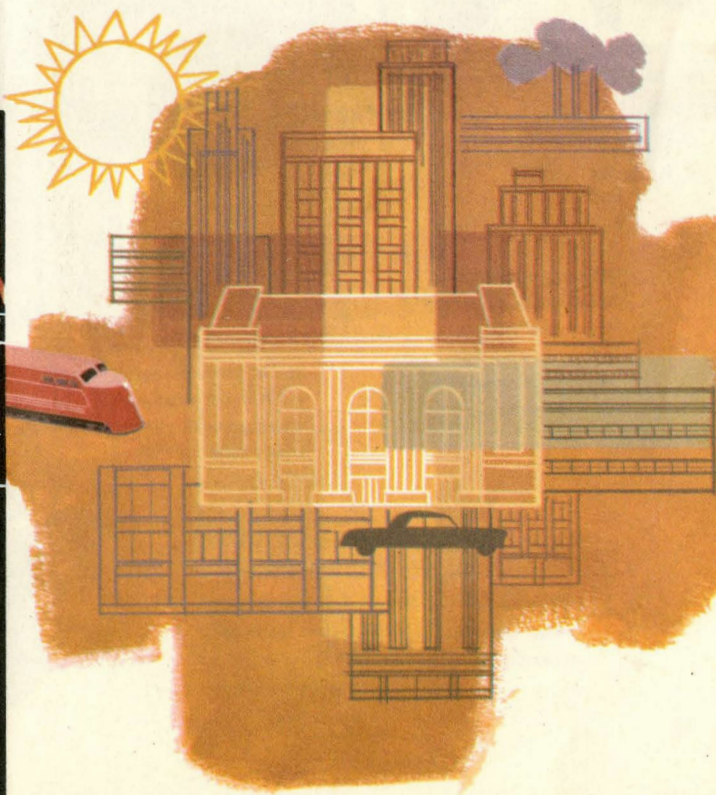
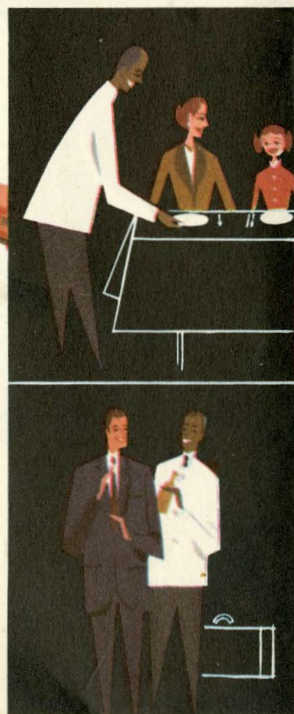


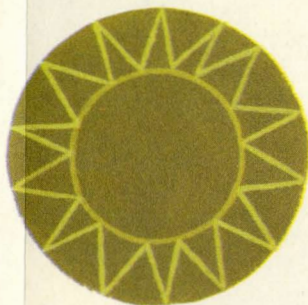
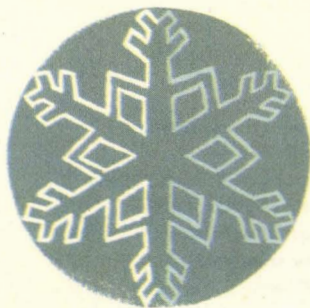
Courteous service, comfortable and relaxing accommodations, restful sleep, gracious club and dining facilities all are yours to enjoy when you Go Pullman.

Go Pullman for "heart of town" convenience



As you sleep, you are carried safely and surely to your destination. You arrive right on time and right where you want to be . . . right in the heart of things.





any season is the best



Winter's enchanted scenes take on added charm for you when viewed from the picture windows of Pullmans.

Spring showers, too, are fun and relaxing when you are on the sunny side—the inside of a Pullman.

Summer's heat is in full retreat when you travel in the comfort of air conditioned Pullmans.

Fall—when the landscape is splashed in vivid colors—is best enjoyed by Going Pullman.

"The signs are right"
—whether day or night and
wherever you go—
when you Go Pullman.

season to Go Pullman

You'll find the Pullman
accommodation that best fits your
travel needs on these pages.

ACCOMMODATIONS	PAGE NO.
Double Bedrooms	6, 8 and 10
Bedroom Suites	7, 9 and 11
Compartments	12 and 13
Drawing Rooms	14
Duplex Single-Rooms	15
Roomettes	16 and 17
Duplex-Roomettes	18
Sections	19
Upper Berth	20
Lower Berth	20

NOTE: Pullman sleeping accommodations described and illustrated in this folder are those of the *new and improved* types, and *all* are designed to give you the ultimate in modern comfort while traveling.

This booklet describes the outstanding conveniences, accommodations, and personal services that are yours when you Go Pullman. Call or visit your railroad ticket agent in advance for help in planning your next trip.

Your Pullman Conductor. His duty is supervision of Pullman service and looking to your comfort and welfare.

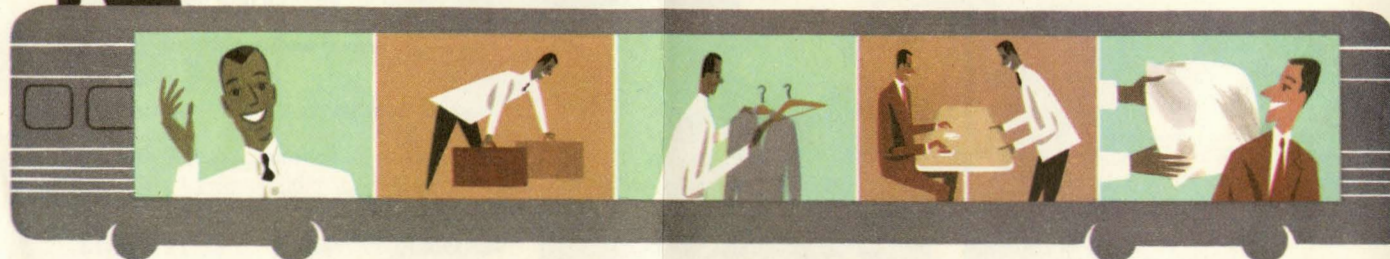
Your Pullman Porter. He is at your service to make each trip a pleasant one. Call him for any service you desire.

Luggage. Ample luggage space is provided in every Pullman unit. Your porter stows your personal luggage as you wish it and, at your destination, asks permission to remove it.



Pullman

TRAVEL OFFERS "FINE HOTEL"



Conveniences. Clothes racks, coat hangers, ash receivers, electric fans, and many other conveniences are available to Pullman travelers.

Clothes Brushing. Your porter does this when you reach destination or whenever you wish.

Sanitation. Every Pullman car, and every accommodation in it, is cleaned and inspected before each trip. Every precaution is taken to maintain rigid sanitation standards en route.

Lighting. Modern lighting facilities are provided in all Pullmans. For your convenience, all fixtures in your accommodation are subject to your own control.

Room Service. In many instances, food or refreshments may be served in your accommodation. Your porter will be pleased to convey your order to dining car personnel.

Shoe Shine. Your porter will polish your shoes during the trip if you leave them beneath your berth or in the shoe box provided in your room.

Lost Articles. Tell your porter if you miss anything while en route. Otherwise, call or write Lost & Found Dept., The Pullman Co., Merchandise Mart Plaza, Chicago 54, Ill., or local Pullman office.

Lounge Cars. Club, buffet, observation, lounge and restaurant cars are provided for your pleasure. You may order refreshments, read magazines, write letters, or just sit and enjoy the friendly company of fellow travelers.

Electric Razors. An electric-razor outlet is provided in dressing rooms and room units.

Call Bells. Use the call bell in your accommodation to summon your porter.

Leaving Calls. Leave word with your porter if you wish to sleep late in the morning or if you wish to be awakened at a specific time.

Towels & Bedding. Freshly laundered sheets and towels are provided along with snowy pillow cases and plenty of warm woolen blankets. Ring your porter for extra blankets or towels.

Sending Telegrams. While en route, your porter will deliver telegrams or help you send them.

Hotel Red Book. This handy guide is provided to help you make advance hotel selections.

Air Conditioning & Heating. All Pullman cars are well ventilated and air conditioned. In most room units you may adjust temperature to suit your personal preference, or you may ask your porter to adjust it for you.

SERVICE AND CONVENIENCES



Pillows in Daytime. The porter will offer you a big, comfortable pillow for daytime lounging.

Drinking Cups. A supply of sanitary, individual drinking cups and pure cool water is provided on every Pullman. Room units have specially cooled water on tap or in thermos bottles.

Pets. Pets (no more than two) may be taken into Pullman rooms when in suitable containers. Dogs must be muzzled and on leash.



Rail-Auto Travel Plan. Arrive fresh and rested and have a "rent-a-car" waiting for you. Ask your ticket agent to make all arrangements.



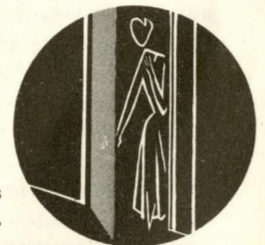
Double Bedroom

These double bedrooms are divided by a folding partition and may be had singly, or en suite as shown on the opposite page. Each room is equipped with two full-size beds, one lower and one upper, also with separately enclosed toilet and wash basin facilities. In the bedroom which has a folding chair and a contoured sofa seat the beds are lengthwise of the car. In the other bedroom, which has a full-length sofa, the beds are crosswise of the car.

Ideal for two people, the bedroom is air conditioned and has separate fan and heat controls. Other conveniences of bedrooms of the types shown here include wardrobe lockers, ample luggage space, folding arm-rests, mirrors, electric razor outlets and shoe lockers.

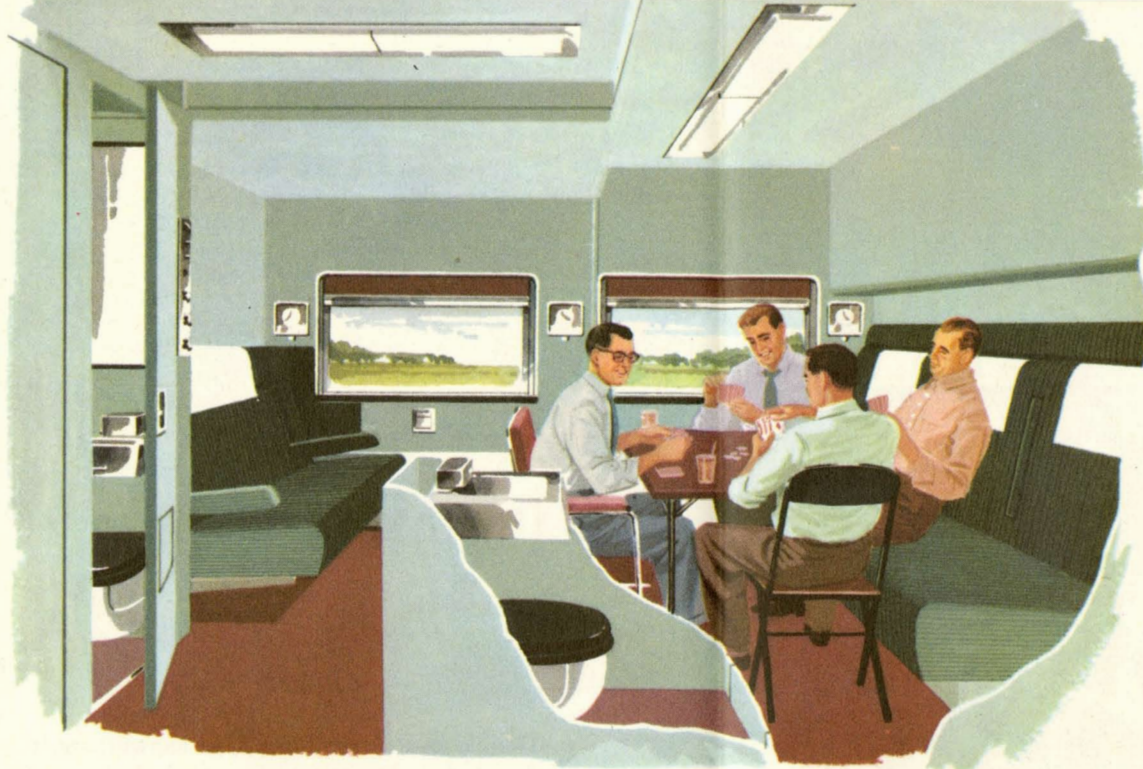


General and individual lighting is subject to your control.



Toilet and wash basin facilities are in a separate annex.

The long deep-cushioned sofa in the bedroom to the left provides ample seating space for two or three. Parents traveling with a child will find this accommodation especially suitable for their needs.



When the partition between these two double bedrooms is folded back, the en suite arrangement makes a commodious room for group or family travel. A table and extra chairs for recreation or dining will be furnished if you wish.

Four big beds made with fresh, crisp linen, warm blankets and soft snow-white pillows. Upper berth safety guards and ladders are part of the equipment. The partition may be closed to provide separate rooms if preferred.

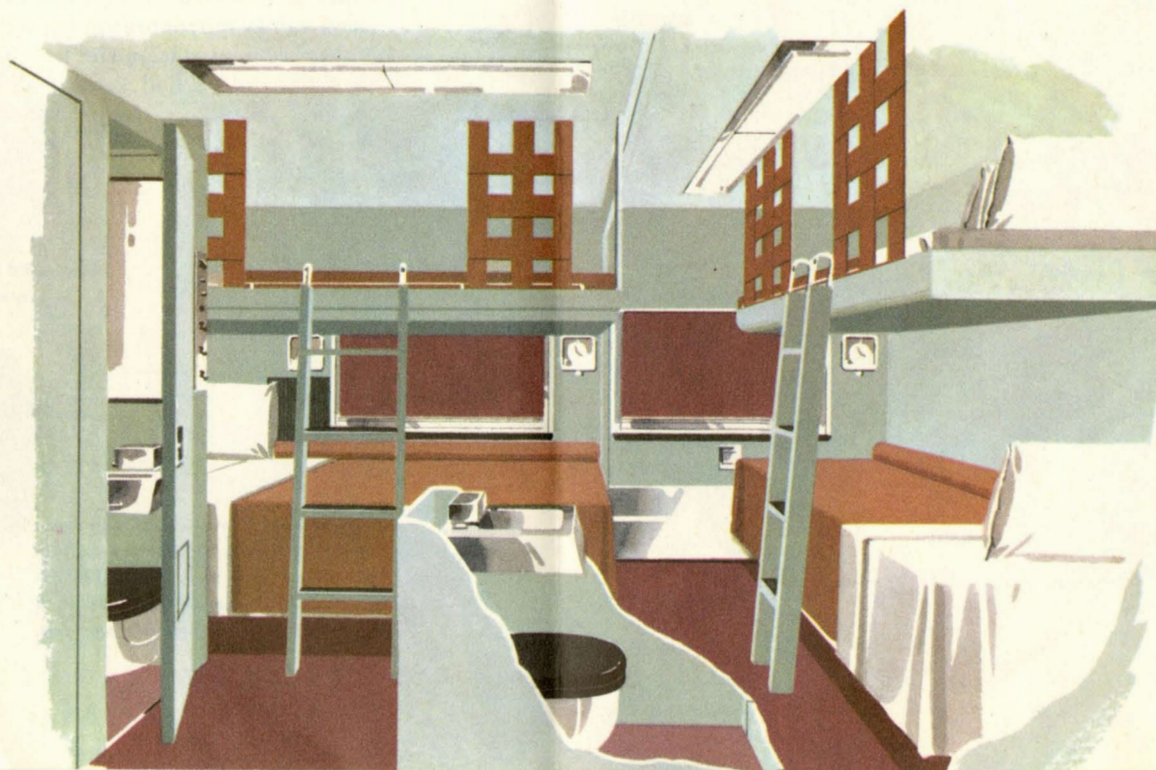
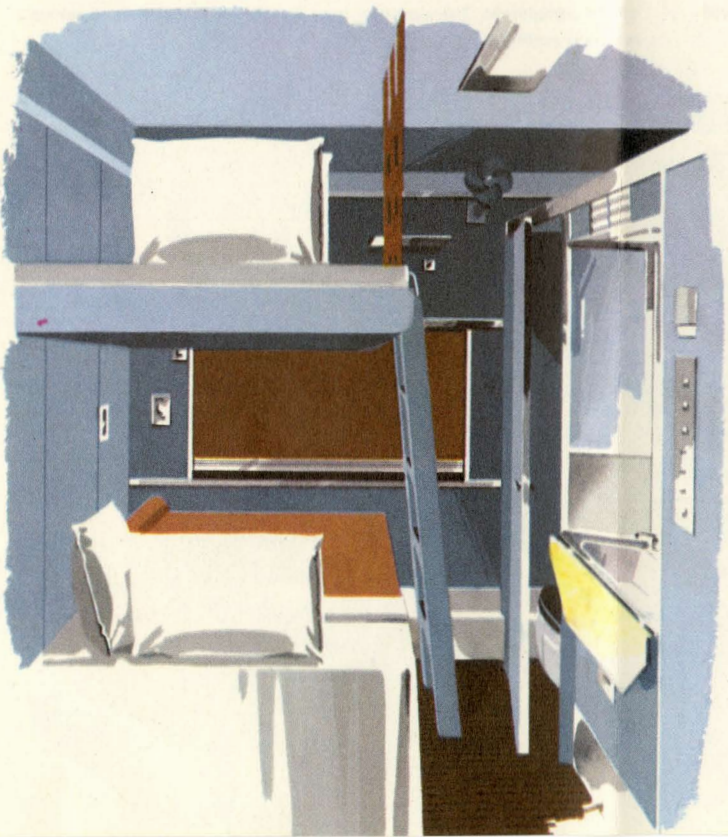




Table for meal service, games or writing letters is as close as the porter call bell at your finger tips. The two large and comfortable lounge chairs for daytime use are stored under the bed at night.

Double Bedroom

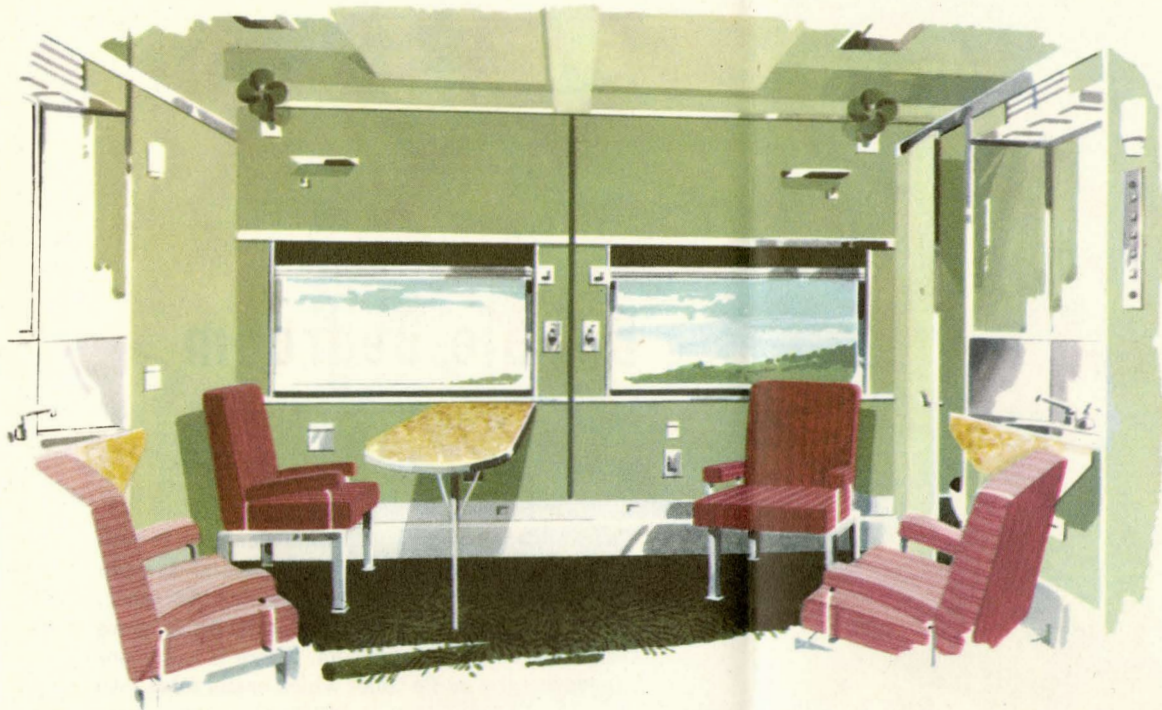
Double bedrooms of the type shown here in day and night use provide ample living and sleeping space for two people. Air conditioning, individual heat, fan and light controls, plenty of room for clothes and luggage, private toilet annex, freshly supplied drinking water and a wide wash basin below a three-sided vanity mirror are among the other extras of this accommodation and which add so much to the comfort and relaxation of Pullman travel.



Foot pedal water control aids in washing, make-up.

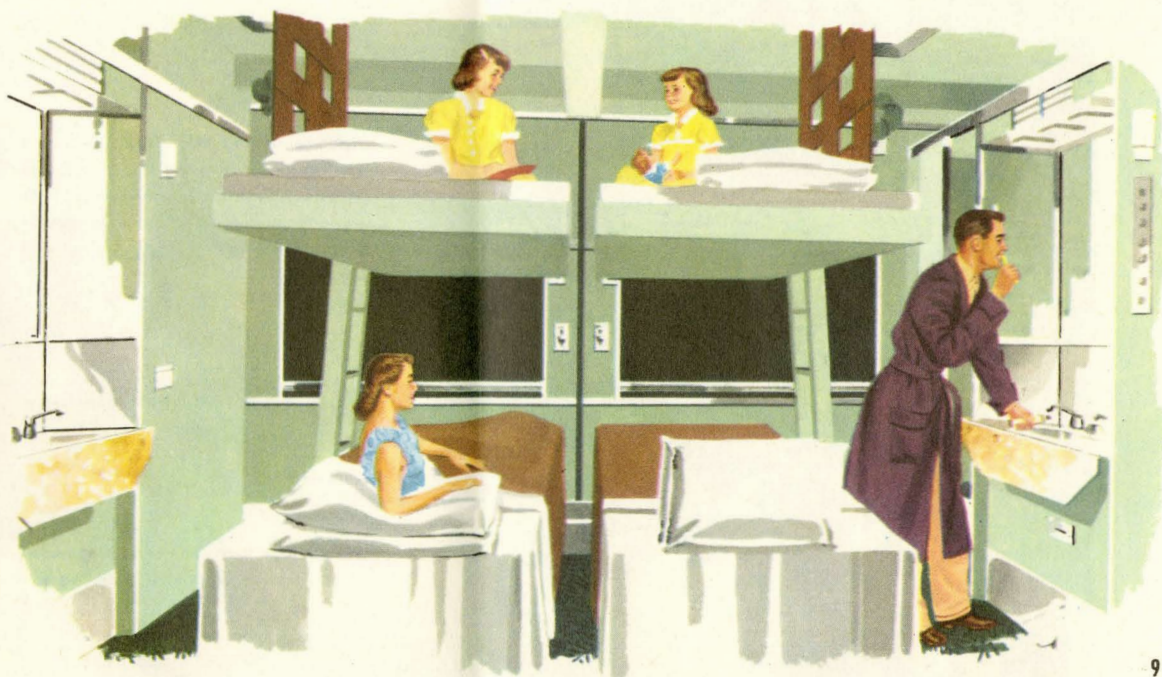
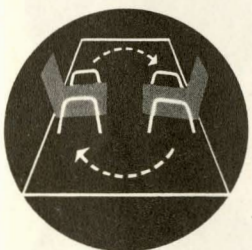
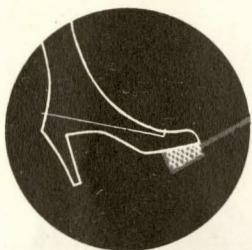
Movable chairs give flexible seating arrangement.

The lower bed is of the fold-in-the-wall type and the upper berth is lowered from the ceiling. Both beds are full-length and are crosswise of the car. Upper berth ladder and safety guards are provided.



The bedroom suite, consisting of two connecting double bedrooms, appeals particularly to parents traveling with children. It is also favored by groups of business men who wish to have available en route a single large room for business conferences or social gatherings.

In nighttime use, the bedroom suite sleeps as many as four people with a separate bed for each. If less than four are to be accommodated, or if the party so prefers, the porter will be glad to prepare only the number and particular beds desired.





Each bedroom is air conditioned. Heat, lights and ventilation may be controlled to suit the preference of the occupants. The full length sofa is ideal for daytime naps.

Double Bedroom

The double bedroom pictured here is shown in both daytime and nighttime arrangements. It contains a wide comfortable sofa which, at night, forms a sleep-inviting bed. The upper berth opens from its niche above the sofa. There is a stationary washstand and a toilet which easily folds into a convenient cabinet. Additional conveniences include ample space for clothing and luggage, cool drinking water, hand towels, mirrors and a locker for shoes which the porter will shine if desired.



Nighttime use of this double bedroom has the sofa converted into a bed and the upper berth moved into place, with the latter equipped with safety guards and a safety ladder to ease access and exit.

Deep carpets and colorful upholstery add to relaxed travel.

Partition between connecting bedrooms can be folded back.

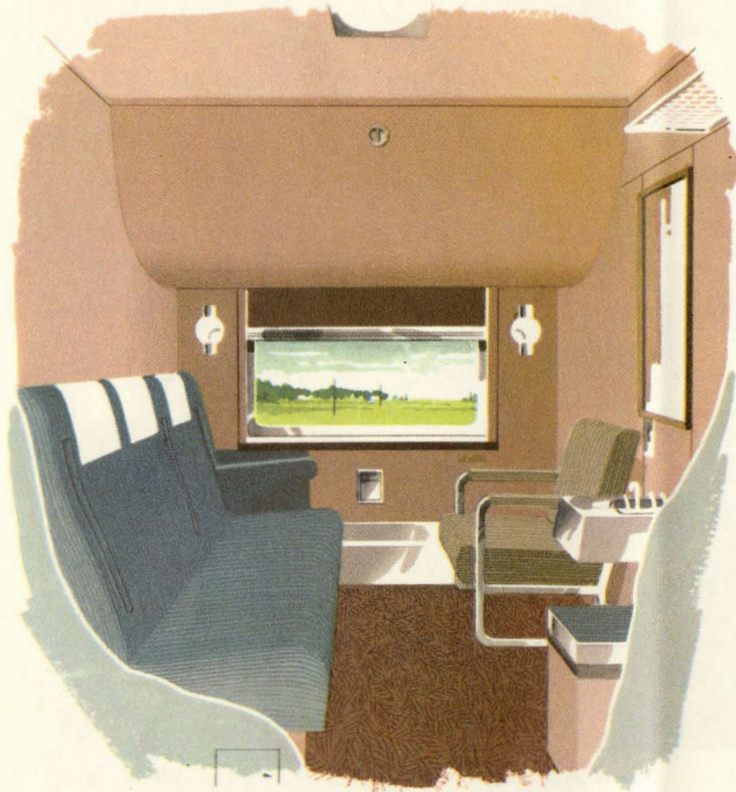




Ideal for group or family travel, connecting bedrooms in the bedroom suite arrangement become one large room when the partition is folded back. A table and folding chairs can be set up for meals or games to be enjoyed in complete privacy and comfort.

Time to retire means time to get a good night's sleep in four comfortable beds in surroundings equal to those found in the best of hotels. You awake in the morning, rested and relaxed, with everything needed to complete your toilet right at hand.





If you're two, or two plus a youngster, you will find the comfort and privacy of this compartment ideal for your travel needs. And, the sofa is always handy for daytime naps.

Compartments

There's generous living and lounging space in the compartment, whether it's of the type shown on this page or of that shown on the opposite page. In the one to the left, the long deep-cushioned sofa and lounge chair will comfortably seat up to four for daytime travel. At night the sofa gives way to a sleep-inviting bed. There is also an upper berth which levels off above the window, at right angle to the sofa-bed.

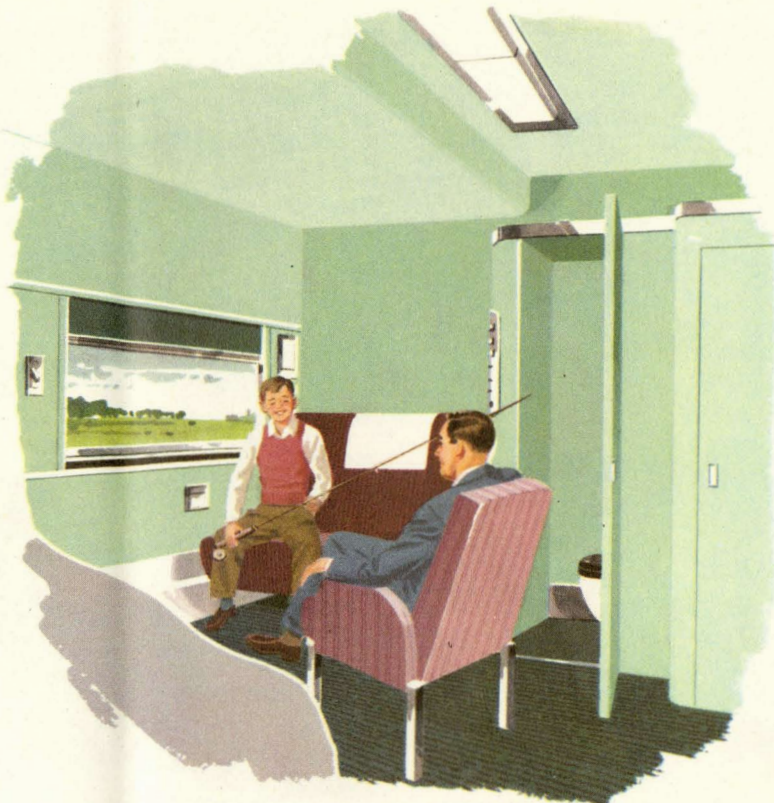


Upper berths are equipped with safety guards.



Other conveniences of this compartment include private toilet and washing facilities, air conditioning, thermostatic control of heat and individual regulation of ventilation and lights.

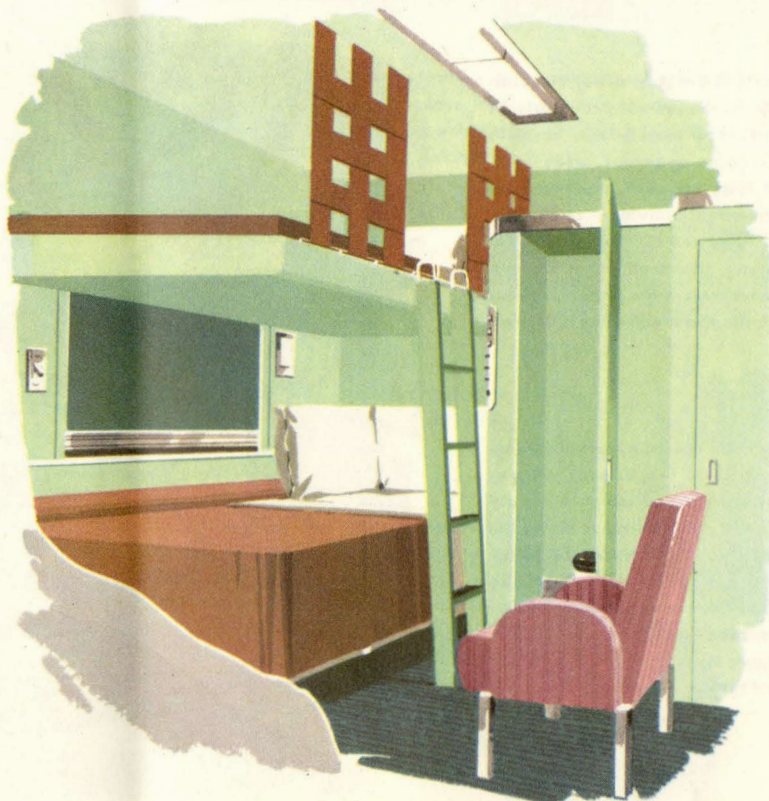
Try a compartment on your next Pullman trip. You will be pleased with its comfortable furnishings and tasteful decorations, also with its exceptionally fine seating arrangement.



In the compartment to the right the two beds are lengthwise of the car. The lower bed is of the fold-in-the-wall type, while the upper berth, directly above, lowers from the ceiling. Both beds feature restful mattresses, fresh crisp linen and soft warm blankets. Complete toilet and wash basin facilities are enclosed in a separate annex. Liberal space is available for the storing of luggage, wraps and other belongings.



Luggage space is ample for sports equipment.



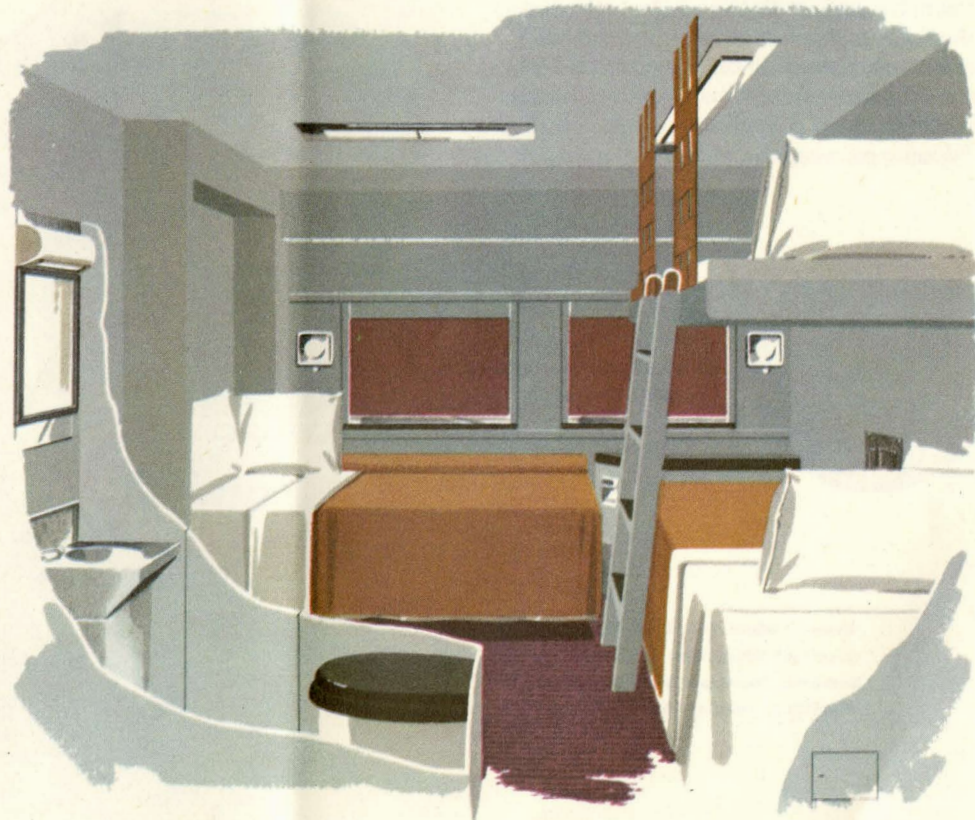
Even at night with both beds made there is plenty of elbowroom in the compartment. The ladder to the upper berth is firmly affixed and remains in position throughout the night.

Drawing Room

Complete with every personal need, the drawing room is especially suited for family or group travel. By day it is a spacious living room, with wide sofa, two movable lounge chairs and two large windows. Toilet and washing facilities are completely enclosed in a separate annex. There is a large wardrobe locker for hanging clothes full-length.

Among the many other conveniences of the drawing room are its roominess for meal service, business conferences or games, wide overhead luggage rack, complete air conditioning, individual controls of heat, lights and air flow, cool drinking water, electric shaver outlet, well placed mirrors and a locker for shoes which the porter will shine if desired.

At night the drawing room makes up with three full-length beds, all featuring mattresses which are truly sleep inviting. The lounge chairs are folded and placed under the longitudinal bed which opens from the wall, the transverse sofa converts into a second bed and the third bed is an upper brought down from along one of the cross walls.



Duplex Single-Room

These private rooms, designed for use by one person, are arranged on two levels, the lower rooms at aisle floor level and the upper rooms three steps above it. Each room has complete toilet facilities, a comfortable lounge sofa with arm rests, ample space for luggage, a folding table for meals or writing, air conditioning and individual controls for heat, air flow and lights.



Communicating doors connect adjoining rooms on the same level and may be opened. Each room has a locker for shoes to be shined by the porter if desired.

At night the roomy sofa becomes a comfortable bed. The toilet facilities are available at all times. There's always plenty of floor space for dressing and undressing.

The folding table is hinged to one of the walls.

A full-length mirror aids in dressing, primping.





Roomette

The Roomette is a completely enclosed, private room and offers more than ample space for *one person*. It is equipped with a premade fold-in-the-wall type bed over six feet long, a comfortable sofa seat, complete toilet facilities and individual controls for heat, lights and air conditioning. The door can be locked from the inside for complete privacy for lounging or sleeping.

At night you can lower the bed when you wish to retire, or the porter will be glad to lower it. A zipper type curtain in the doorway allows you added space for getting into or out of the bed.

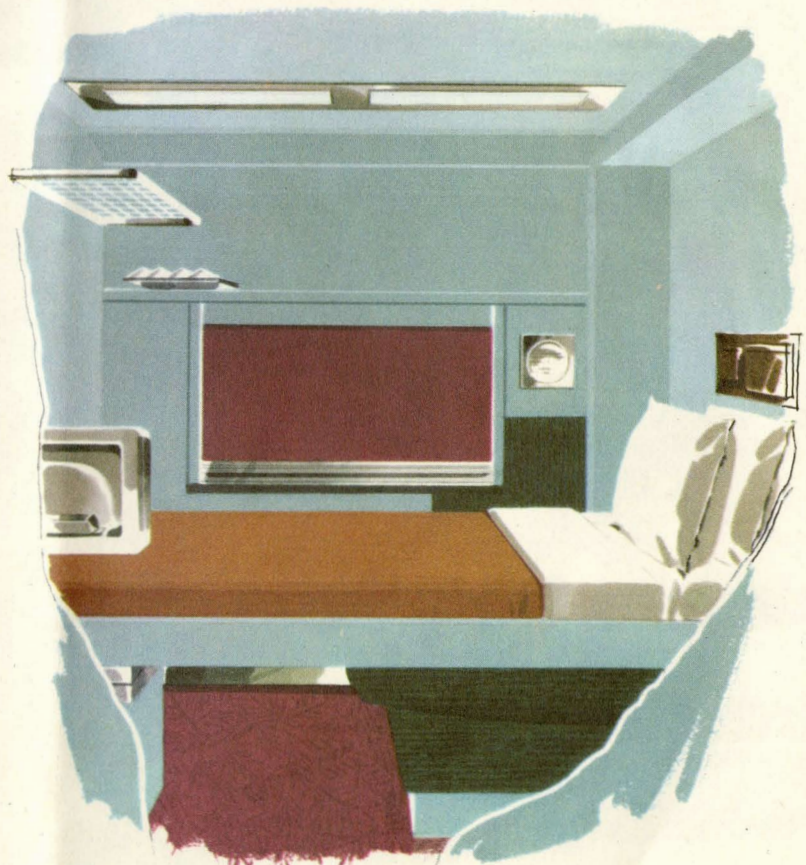


Cold drinking water, freshly supplied, is at hand.



Smoking facilities are aided by efficient ventilation.

Daytime use of the Roomette finds the bed in its wall niche. The relaxing sofa seat and wide picture window enable you to view and enjoy the passing panorama in restful and solid comfort.



Roomette

The Roomette pictured here, also designed for single occupancy, has the front edge of the folding type bed contoured at the lower end. Complete and private toilet facilities, ample luggage space, plenty of room for lounging and dressing, chilled drinking water and individual heat, light and air conditioning controls add to your comfort and enjoyment.



Day or night you are assured of complete privacy if that should be desired. In addition to the lights for general illumination, there also are reading and mirror lights for your individual control.

The bed when lowered for night use is over six feet long. It has a sleep inviting mattress and is pre-made with two pillows, crisp clean sheets and woolen blankets.

Careful pre-making of the bed adds to restful sleep.



The wash basin is accessible, both day and night.



Duplex-Roomette

The duplex-roomette is a compact private room for use by one person. It contains complete toilet facilities and offers full privacy at a cost only slightly over that of a lower berth. Duplex-roomettes are arranged on two levels on each side of a center aisle, with the lower rooms at aisle level and the upper rooms two steps up.

Each duplex-roomette has a sliding door which may be locked. Other conveniences include a comfortable sofa seat next to a wide window, ample luggage space, cool drinking water, mirror and electric shaver outlet. The bed in the upper room is of the fold-in-the-wall type while that in the lower room slides out of its niche below the upper room.



Individual control of heat, lights and ventilation.



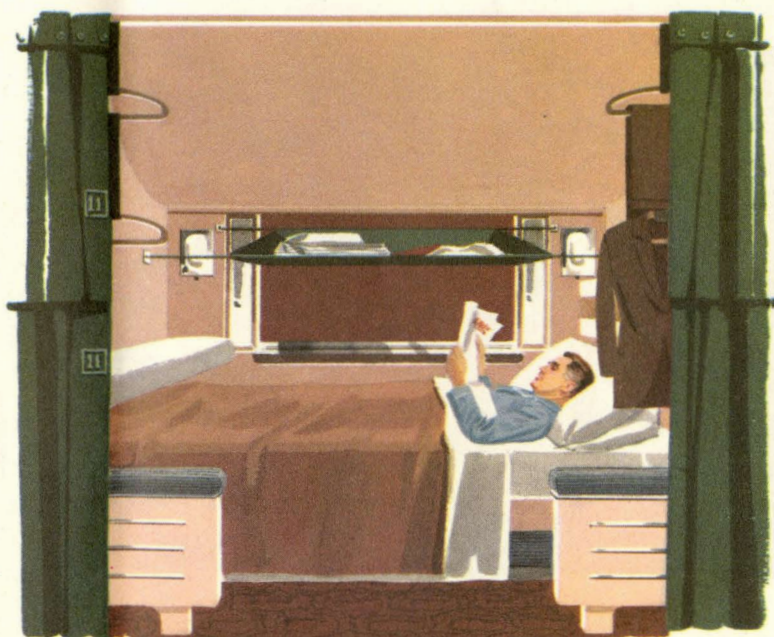
A locker for shoes to be shined by the porter.

Section

During the daytime berth and section passengers are accommodated in comfortable sofa seats, especially suited for lounging or window gazing. Individual reading lights are provided and there is ample room for luggage and wraps. Completely equipped toilet and dressing rooms elsewhere in the car are always available.

NOTE: A "Section" is the space of both a lower and upper berth, but where one berth only will be prepared for night use. Where lower and upper berths within the confines of a section are purchased for separate use, the accommodations furnished will be as described and pictured on page 20.

Where a section for single occupancy is purchased the occupant has exclusive use of all of the facilities in the section, including both seats, extra luggage space and extra pillows and blankets as desired. In the use of a section in nighttime service, as pictured at the right, both the upper and lower berth mattresses are placed on the lower berth to make for more restful sleep. The upper berth is closed to provide more head room and four clothes hangers are furnished.



Stretch to
your heart's content.



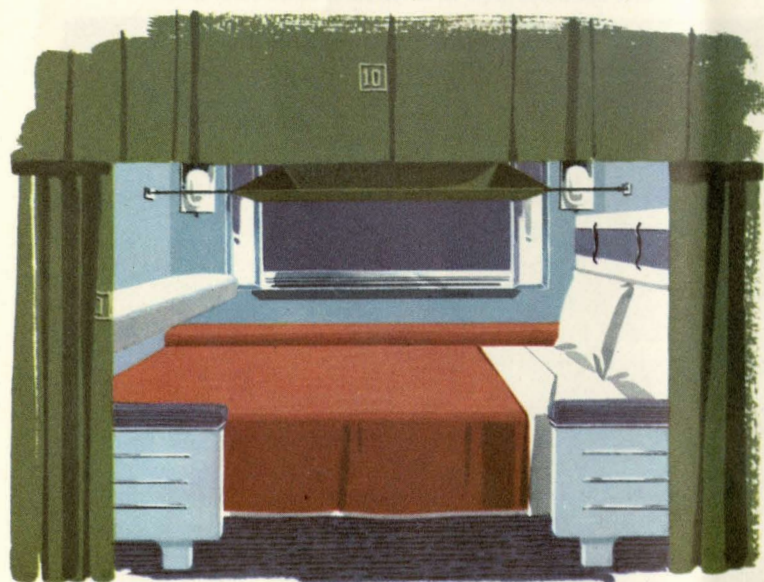


Upper Berth

Lowest priced of all Pullman sleeping accommodations, the upper berth is a full-size comfortable bed equipped with a soft, sleep-inviting mattress. The bed is prepared with crisp linen, warm blankets and two fluffy pillows. Other conveniences include clothes hangers, a rack for toilet articles and underclothing, individually controlled reading lights and a porter call bell. A safety ladder makes access and exit easy. Berth curtains assure complete privacy.



Hangers help keep clothing neat.



Lower Berth

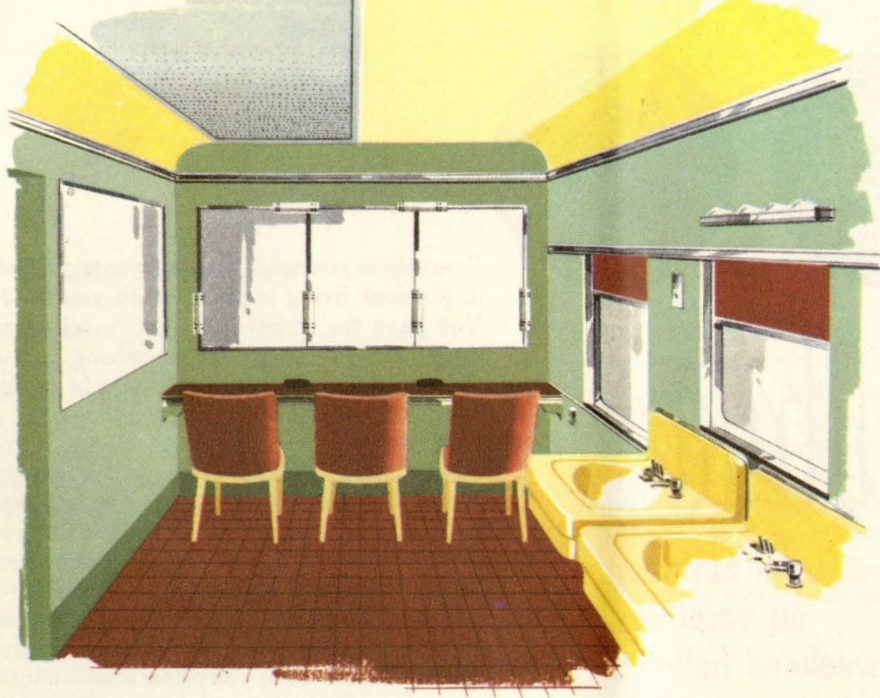
The cushions of the daytime section seats drop down to form a base for the innerspring mattress of the lower berth. There's a shelf for toilet articles or an overnight case, hangers and a rack for clothing, heavy curtains to insure privacy and ample space for luggage.



Seats can be adjusted to suit your needs.

Lights placed for proper illumination.





Women's Dressing Room

There is a dressing room for women in each car having section and berth accommodations. Sparkling clean at all times, its furnishings include a dressing table, chairs, wash basins and a generous number of mirrors. There is plenty of soap and hot water, an ample supply of fresh towels and a wealth of well-diffused light. The toilet is in a separate annex.



Men's Dressing Room

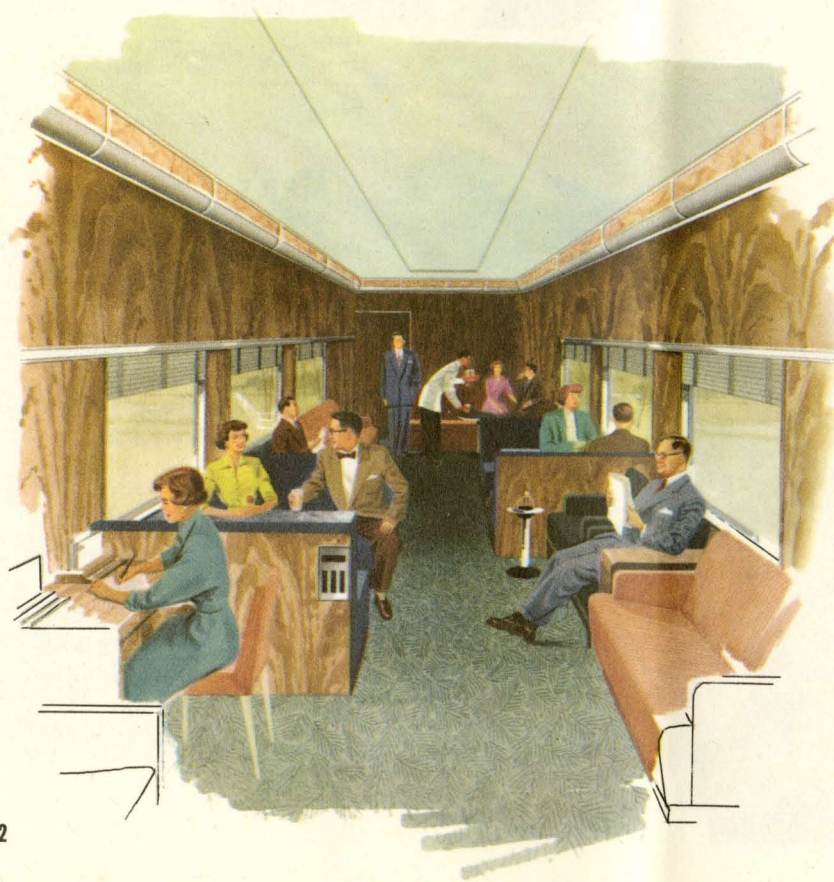
This masculine room contains all the conveniences needed for proper grooming. There are big wash basins with well-lighted mirrors, a dental basin, automatic soap dispensers electric razor outlets, wall hooks for clothes and a shelf for shaving equipment. It is also an ideal room for lounging and smoking. A full-length mirror graces the door leading to the private toilet.



Go Pullman

... on business,
on vacations,
or on weekend holidays

Everything you need to make your trip an adventure in gracious living is yours when you *Go Pullman*. You have the widest choice of travel accommodations that can be found anywhere, and all were designed to give you the ultimate in modern comfort. To many, Pullman means thoughtful, personal service and conveniences; to others it means an opportunity to relax and enjoy the luxuries of the lounge and observation cars that are made available to them. But to all travelers who use these facilities, *Go Pullman* means the finest in sleeping accommodations. Day or night, you will enjoy comfort, service, and safety in Pullman-operated cars that no other way of going places fast can match. So pick the type of space you prefer and *Go Pullman*, too.



The lounge car with its luxurious furnishings is there for you to enjoy. Relax in deep, comfortable chairs and read the latest magazines or sit back and marvel at the constantly changing scenery. Like a private club, you will find that congenial atmosphere and pleasant companionship makes time quickly pass by . . . much too quickly.



how Pullman serves you

To offset the wide seasonal and geographic variations in the demand for Pullman service, The Pullman Company maintains a fleet of some 4,500 sleeping cars. From this fleet the railroads request cars as the need arises and The Pullman Company provides the conductors, porters and many other personnel who serve you unseen when you *Go Pullman*.

In an average week The Pullman Company serves more than 275,000 travelers. It requires about 1,700 conductors, 8,000 porters, a small army of car cleaners and hundreds of maintenance specialists. The Pullman laundries wash and iron some 2,248,000 sheets, 2,377,000 pillow slips, plus 2,937,000 towels and 982,000 other pieces, every month. Take the world's greatest hotel, multiply its operation many times—and then put the whole thing on wheels. That will give you some idea of the enormity of Pullman's task.

it takes a lot of people

While 59 of the leading American railroads now own The Pullman Company, the schooling of some 20,250 Pullman employees, the coordination and conduct of Pullman service remains in the capable hands of the original organization.

Thus, the uniform standard of service, comfort, and safety—unmatched by any other way of travel—developed and perfected by the 95 year old Pullman organization is maintained by the people responsible for its reputation and standing.

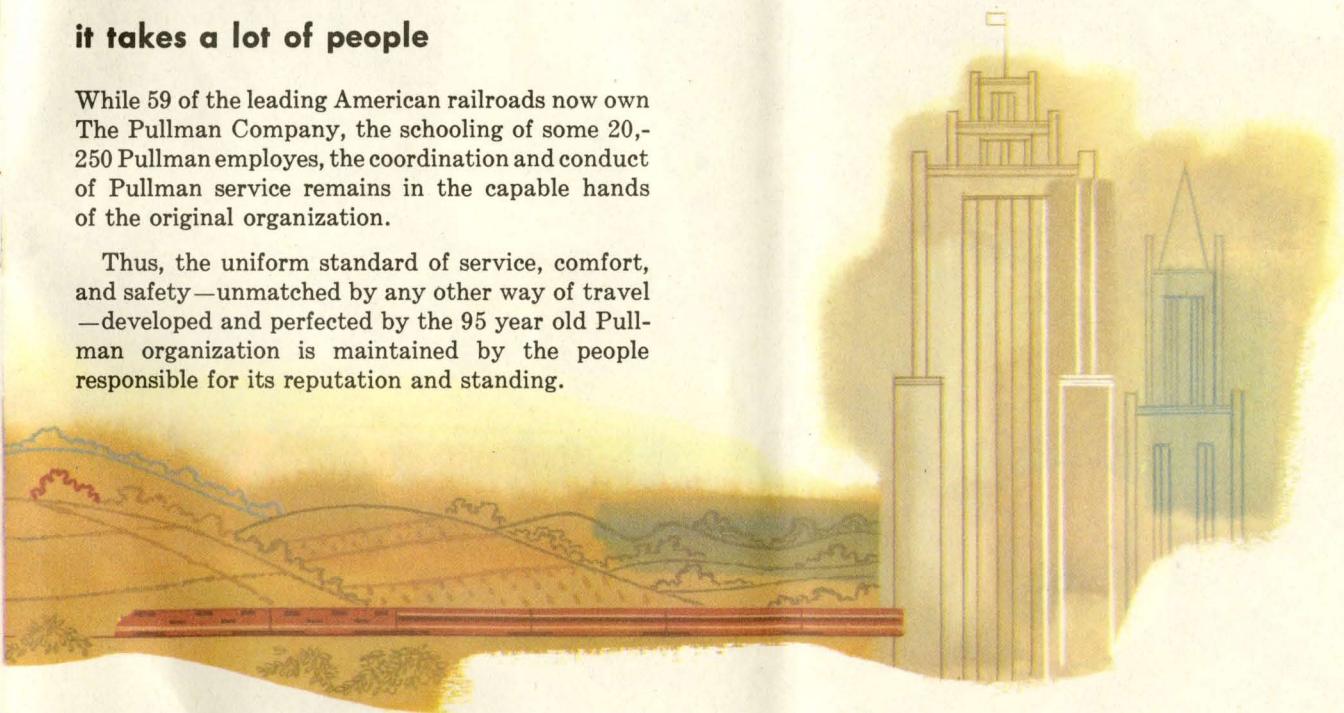
a look to the future

Though our achievements have been many in the past, we of The Pullman Company are more interested in the Pullman service you receive today and tomorrow. We fully expect to improve accommodations, service, comfort, and convenience as much in the years ahead as in those gone by. Any suggestions you may have that you think will improve Pullman travel now or in the future will be gratefully received by your Pullman conductor or porter. Or, if you prefer to write, address your suggestions to:

CARROLL R. HARDING, President

The Pullman Company

Merchandise Mart Plaza, Chicago 54, Illinois



Go Pullman

for travel at its best

Go Pullman

by day...by night

