



ON A DEMONSTRATION RUN OF THE NEW G.M. TRAIN PASSENGERS DINE IN THE "ASTRA DOME" 15½ FEET ABOVE RAILS. TWO MORE DINING ROOMS ARE DOWNSTAIRS

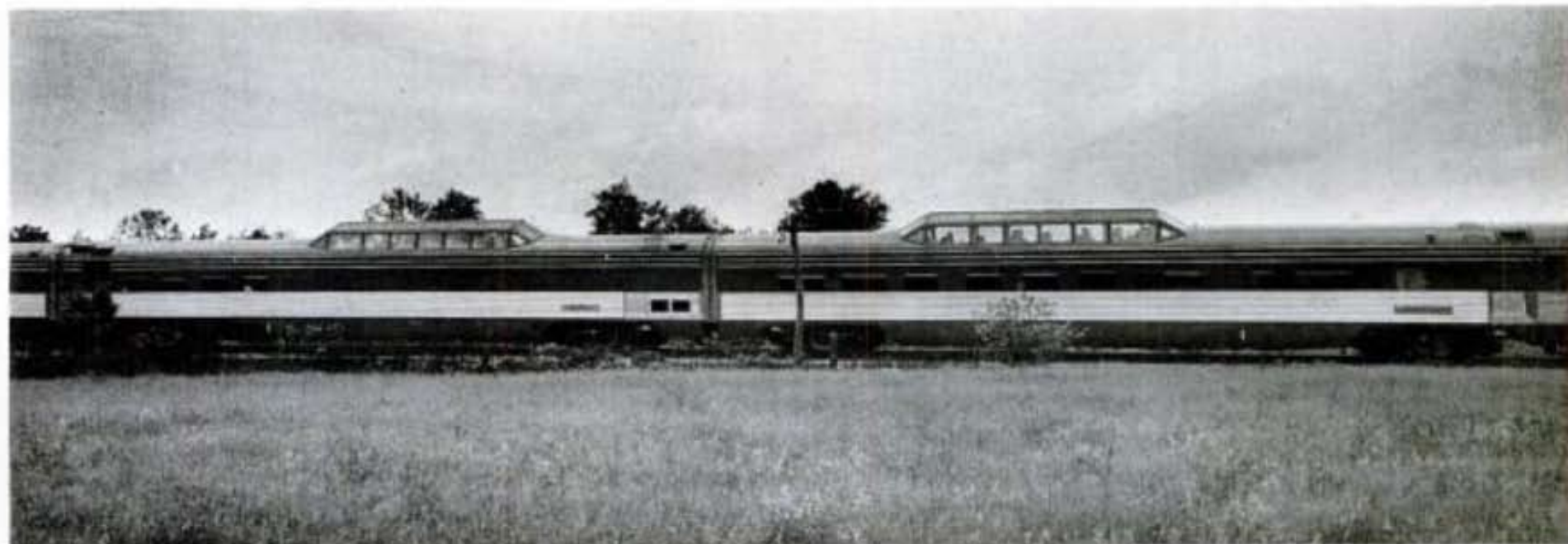
ASTRA DOME TRAIN

Radical new cars give passengers
a fine view and a sway-proof ride

For more than seven years the U.S. railroads have been bumping over the countryside in equipment that was too old even before the war. Simultaneously their officials have belabored the public with rosy promises of great trains. But so far all the public has seen are the various artists' conceptions of these trains and the statement by gadfly Robert R. Young that all the U.S. railroads combined have ordered less than 100 new passenger cars this year. On May 28, however, the railroads

were confronted with a real postwar train, ready for operation. It was designed not by a railroad but by General Motors, an automobile builder.

The train, which G.M. calls the "Train of Tomorrow," was developed at a cost of about \$1,500,000. It is topped by "Astra Dome" rooms to give passengers a good look at where they are going (above). It has a sway-proof ride, four levels and space for a children's playroom. General Motors plans to exhibit it, then sell it to the highest bidder.



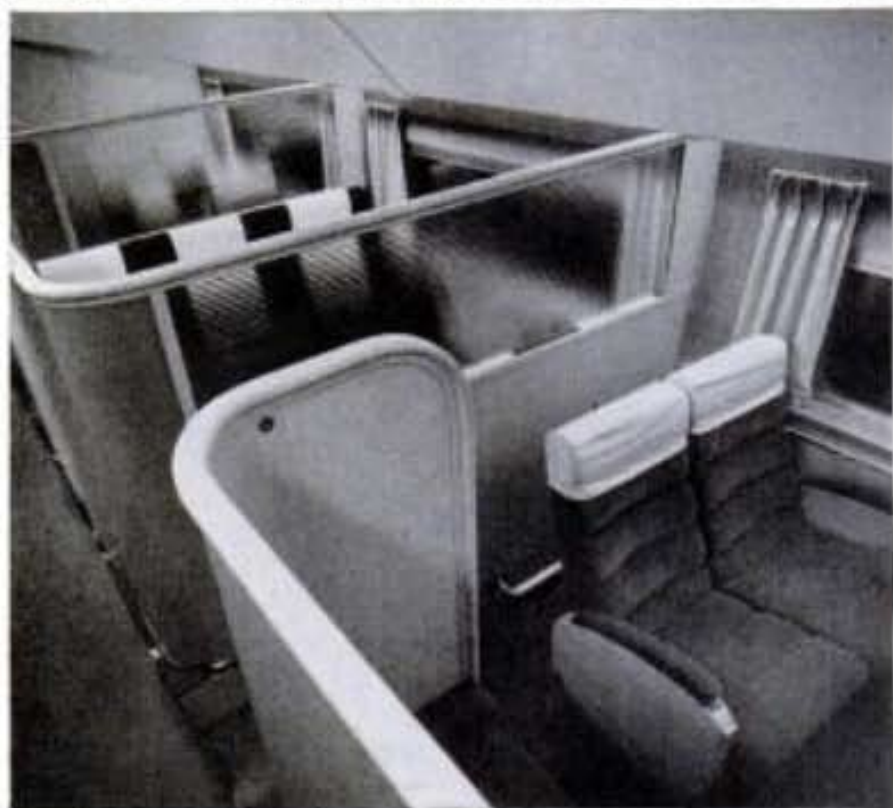
DINER AND CHAIR CAR (above, left to right) are each 85 feet long. The train can carry 216 passengers.

Astra Domes are 30 feet long, seat 24 and extend two feet above car-roof level. G.M. Vice President C. R. Osborn

conceived the dome idea after riding in fireman's seat of a diesel locomotive and noting the improved view.



LOCOMOTIVE is 2,000-hp diesel, runs 100 mph. Rigid couplings between passenger cars enable engineer to start and stop the train without usual jerk.



COACH CAR has compartments on lower level set off by half-partitions (above) where friends or families can travel at normal fare in semi privacy.



RADIO-TELEPHONE enables passengers to call home from speeding train. Demonstration guests called Queen Elizabeth at sea, talked with the captain.



COCKTAIL LOUNGES are built into observation car at two levels (above). Bar is in background beneath dome. Decor is green, ivory, turquoise, peach.



PRIVATE DINING ROOM (left) is sunken compartment, lowest of dining car's four levels. Main room is at right. Each car has separate diesel power unit.