

## ST. PAUL-MINNEAPOLIS TO WINNIPEG

Central Standard Time

Leave	St. Paul	8:55 P.M.
Leave	Minneapolis	9:30 P.M.
Leave	St. Cloud	11:00 P.M.
Leave	Sauk Centre	11:44 P.M.
Leave	Alexandria	12:11 A.M.
Leave	Fergus Falls	1:01 A.M.
Leave	Barnesville	1:37 A.M.
Leave	Ada	2:37 A.M.
Leave	Crookston	3:27 A.M.
Leave	Warren	4:17 A.M.
Leave	Hallock	5:32 A.M.
Arrive	Winnipeg	8:15 A.M.



## Travel on these other fine GREAT NORTHERN TRAINS

**EMPIRE BUILDER:** incomparable streamliner every day, each way between Chicago and Seattle-Portland via St. Paul, Minneapolis, Spokane. Great Dome Lounge Car, Ranch Car, Dining Car, Dome Coaches, most modern Pullmans—all types of accommodations.

**WESTERN STAR:** sleek streamliner between Chicago and Minneapolis via St. Paul, Minneapolis, Grand Forks, Great Falls, Spokane. Stops daily at eastern and western entrances to Glacier National Park between June 15 and September 10.

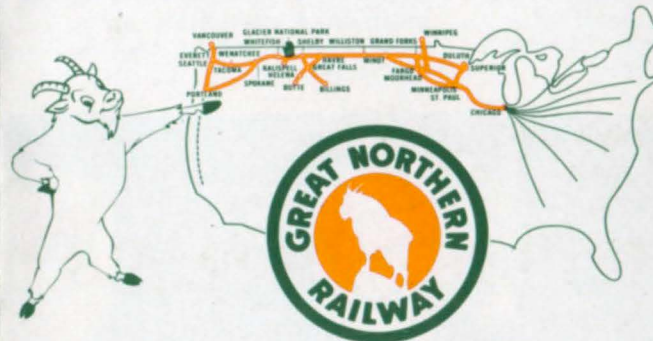
**RED RIVER:** streamlined train between Grand Forks and Minneapolis and St. Paul via Fargo, Fergus Falls, Alexandria and St. Cloud. Makes daily round trip.

**INTERNATIONALS:** streamlined service three times a day between Seattle and Vancouver, B. C. Morning, noon and early evening departures from each terminal.

**CASCADIAN:** daily each way between Seattle and Spokane; beautiful daylight ride over the Cascade Mountains and through 8-mile Cascade Tunnel.

**GOPHER and BADGER:** superlative train service in morning and afternoon between St. Paul-Minneapolis and Duluth-Superior.

Great Northern Travel Offices  
in Principal Cities of  
U. S. and Canada



# WINNIPEG LIMITED

Overnight Between  
St. Paul-Minneapolis  
and Winnipeg



## WINNIPEG TO MINNEAPOLIS-ST. PAUL

Central Standard Time

Leave	Winnipeg	7:55 P.M.
Leave	Hallock	10:27 P.M.
Leave	Warren	11:25 P.M.
Leave	Crookston	12:19 A.M.
Leave	Ada	1:10 A.M.
Leave	Barnesville	2:30 A.M.
Leave	Fergus Falls	3:10 A.M.
Leave	Alexandria	4:10 A.M.
Leave	Sauk Centre	4:43 A.M.
Leave	St. Cloud	5:40 A.M.
Arrive	Minneapolis	7:00 A.M.
Arrive	St. Paul	7:30 A.M.

You Go Great  
When you  
Go Great Northern



# A Great Ride...

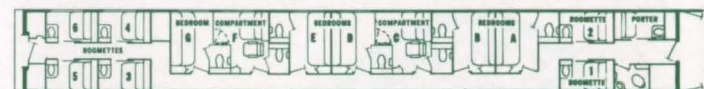
## BETWEEN ST. PAUL-MINNEAPOLIS AND WINNIPEG



Spacious Day-Nite Coach with 48 seats . . . roomy washrooms.



Pullman Sleeping Cars provide duplex roomettes, roomettes, double bedrooms and compartments.



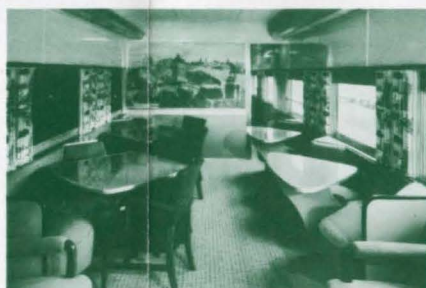
Sleeping Accommodations are varied on the Winnipeg Limited. Choose from these.



Buffet-Lounge-Sleeping Car offering complete overnight travel accommodations.



**LOUNGE SECTION** affords pleasant facilities for relaxation. Beverage and snack service.



**LIGHT BREAKFASTS** are served in the modern buffet-lounge. Evening beverage and snack service.

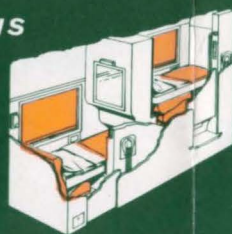


**SPACIOUS COACHES** with reclining leg-rest seats let you take it easy all the way.

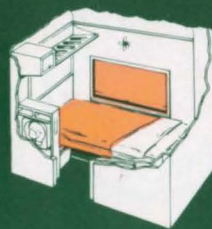
**You Go Great** between the Twin Cities of St. Paul and Minneapolis and Winnipeg, on Great Northern's WINNIPEG LIMITED. It's a fast, comfortable, carefree overnight trip. Call your Great Northern agent for information and reservations.

SLEEPING ACCOMMODATIONS ON THE

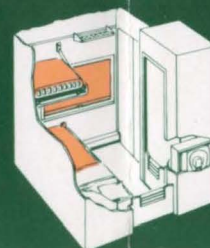
# WINNIPEG LIMITED



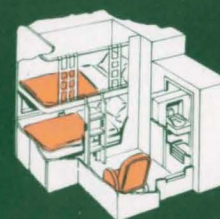
Duplex-Roomettes, private rooms for only 10% more than lower berths. Complete toilet facilities.



Roomettes for single occupancy. All toilet and personal facilities. Arm-rest seat.



Double Bedrooms for one or two persons. Can be purchased en suite, a splendid living room on rails.



Compartments provide excellent space for one or two persons. Also available en suite with Double Bedroom.