

## carefree way to go...

Without worry, without a wasted moment. Your vacation starts when you step aboard a Great Northern train. Travel in comfort... arrive rested, ready for fun.

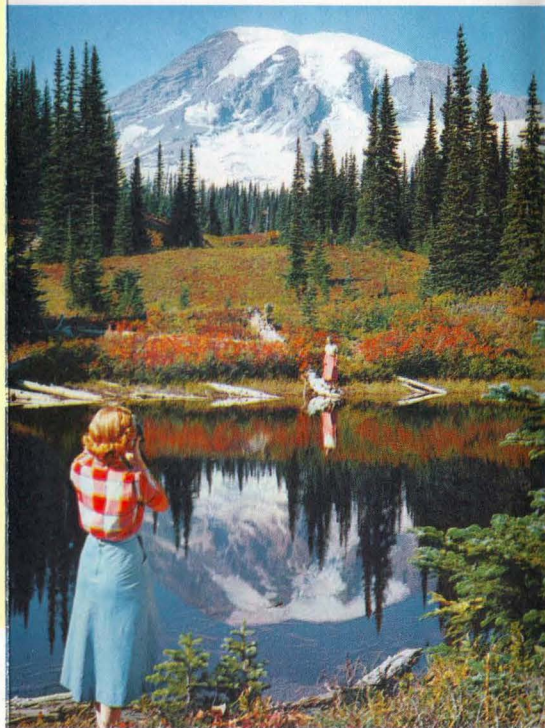
**EMPIRE BUILDER** every day, each way between Chicago • St. Paul • Minneapolis • Spokane and Seattle-Portland. Modern streamlined luxury, with Great Dome cars for sightseeing fun, every scenic mile.

**WESTERN STAR** daily between Chicago • St. Paul • Minneapolis • Glacier National Park • Spokane • Seattle-Portland. Reclining seat coaches, Pullmans, dining and lounge facilities.

GREAT NORTHERN TICKET OFFICES IN PRINCIPAL CITIES OF U.S. AND CANADA.

Your agent will gladly arrange transportation, hotel accommodations and sightseeing trips.

For information, write:  
Passenger Traffic Manager  
Great Northern Railway  
St. Paul, Minn. 55101, or

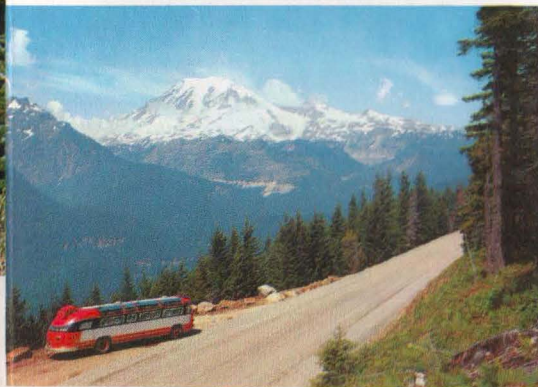


**MT. RAINIER'S** snow-mantled peak is mirrored in a mountain pool, framed by the colors of autumn.

# Mt. Rainier...lofty monarch of the snow-capped Cascades



**SLIDING ON "TIN PANTS"** Visitors enjoy this unique experience and a wide variety of snow-sports on the gentle slopes of Mt. Rainier.

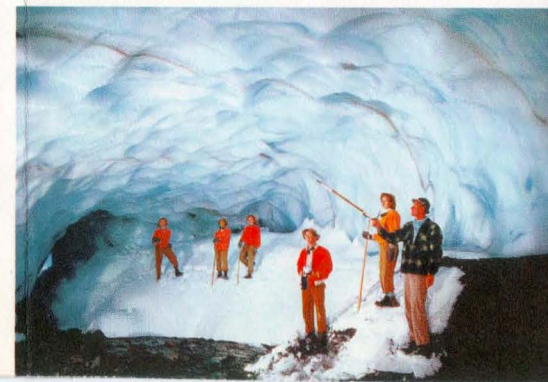


**INDIANS CALLED IT "GOD"**. Majestic Mt. Rainier is the highest and most spectacular peak in the Cascade range. About 35 miles southeast of Tacoma, in the center of unspoiled Rainier National Park, the ageless profile of Rainier reaches over 14,000 feet into the clouds. Twenty-eight glaciers crust the face of Mt. Rainier, largest system of glaciers in the U.S. Below these rivers of ice, and above the rugged tree-line, placid alpine meadows blossom in beautiful flowering plants...like colorful offerings before the throne of this huge, silent sentinel of the Northwest.



**GLACIAL CAVES**, formed by nature, lead to the very core of giant ice masses. Iridescent reflections and moving shadows paint a wondrous, many-hued picture.

**BUS TOURS** take you from Tacoma and Seattle to the very face of Mt. Rainier. Visit famed Paradise Inn and National Park Inn, high up the mountain. Circle the majestic peak with its ever-changing scenes and spectacle.



## majestic Mt. Rainier



**SEATTLE-TACOMA**  
evergreen playground...

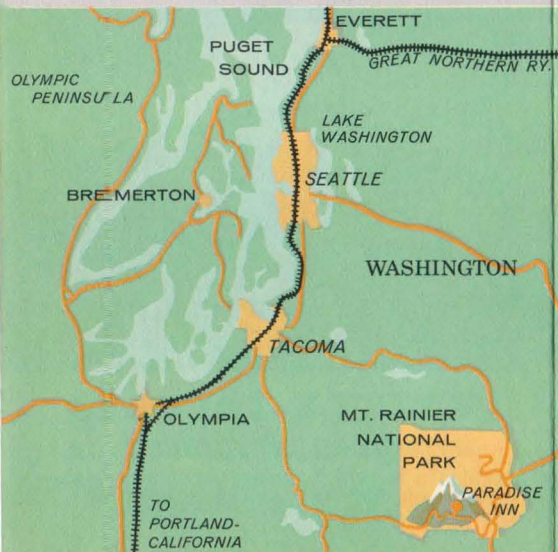


go great...  
**GO GREAT NORTHERN**





## Vacationland, U.S.A.



*every mile packed  
with vacation excitement*

This thrilling vacation paradise is close when you travel Great Northern. Go in comfort . . . see breathtaking scenery all the way, to this Washington vacationland.

## salt spray and snow country

*... enjoy 'em both*

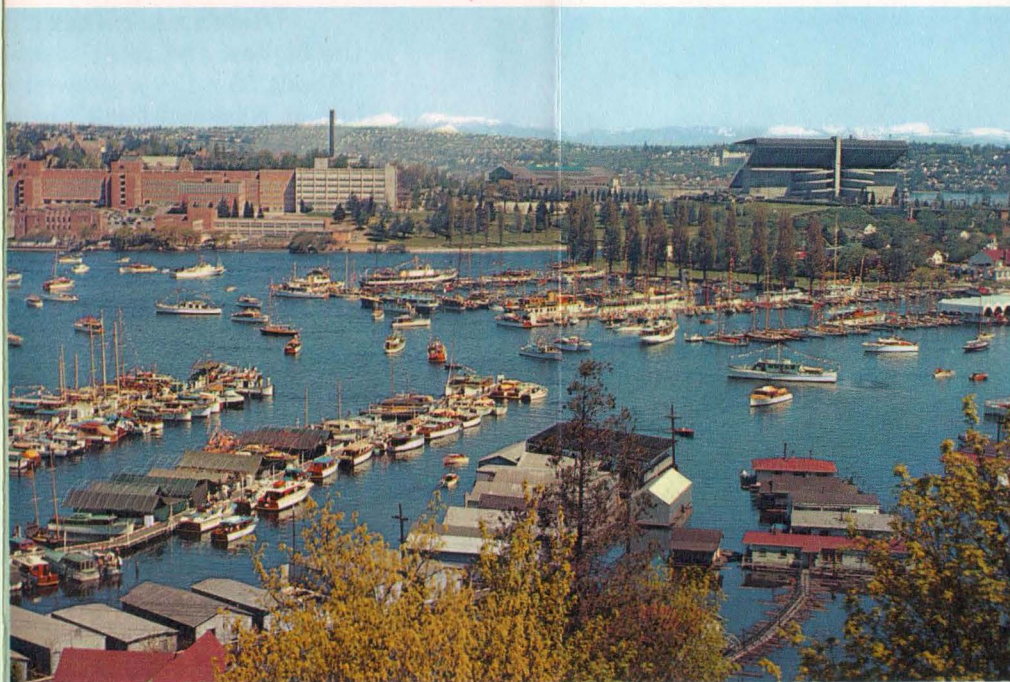
Contrasts abound in this magic triangle of vacation pleasure. Seattle-Tacoma and Mt. Rainier offer a panorama of ever-changing adventure for the visitor.

**SEATTLE**—"America's front door to the Far East". A thriving, international shipping port, 125 miles from the Pacific Ocean, on salt water Puget Sound. Site of Space-Age World's Fair. Among permanent attractions is the 600-foot Space Needle. "Dine in the sky" in its revolving crown.

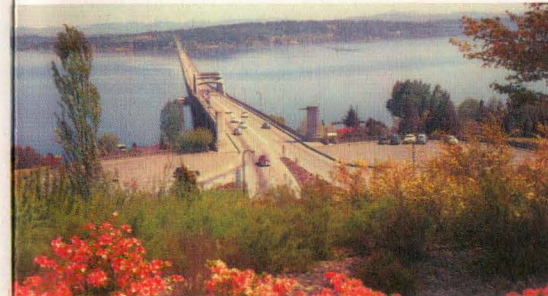
**TACOMA**—23 miles south of Seattle on Puget Sound, is a shipping and lumber capital, feeding the needs of an ever-building world with cedar, spruce, hemlock, fir. Gateway to Mt. Rainier.

**MT. RAINIER**—an extinct volcano, largest glacial system in the U.S. Reaching 14,410 ft., Mt. Rainier is the center of Rainier National Park . . . a quarter-million acre wilderness of unspoiled natural beauty. Pleasant, comfortable inns and hotels offer adventurous retreats for visitors. And snow and ice sports await your pleasure.

# Seattle...queen city of the evergreen Pacific Northwest



**PORTAGE BAY**, in the heart of Seattle, reflects an interest in water sports and boating that has spawned the famous Seattle Seafair, Aqua Follies and the classic Gold Cup power boat races. Seattle is rightfully called "City on the Water".



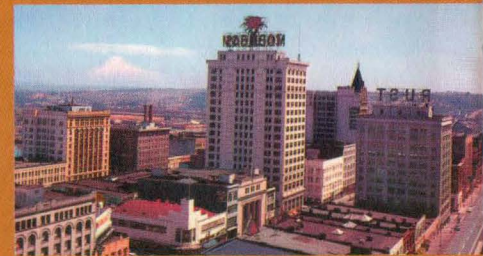
**FLOATING BRIDGE** across Lake Washington. Over a mile long, it is the largest floating structure in the world.



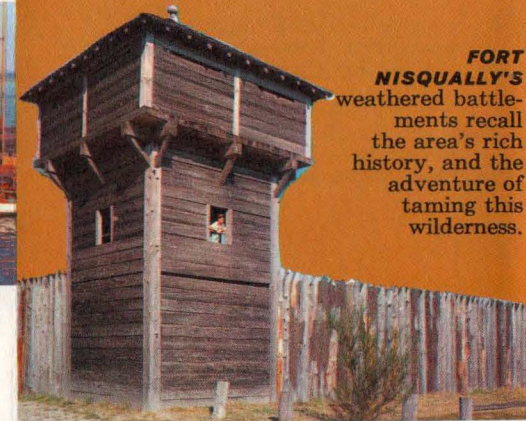
**SIGHTSEEING SHIPS** tour fresh-water Lake Washington, through canals and Government Locks to salt-water Puget Sound.

## Tacoma

*Puget Sound lumber  
and fishing center*



**MODERN TACOMA**, lumber and shipping center south of Seattle. Gateway to famed Mt. Rainier.



**FORT NISQUALLY'S** weathered battle-towers recall the area's rich history, and the adventure of taming this wilderness.