

## How to get there in carefree comfort

Go great... go Great Northern on luxury streamliners through the heart of "great dam country"—from Hungry Horse (near Whitefish, Montana) and Grand Coulee (near Spokane) to Bonneville (near Portland) and many dams near Seattle.

**EMPIRE BUILDER** every day, each way between Chicago • St. Paul • Minneapolis • Spokane and Seattle-Portland. Great Dome coach cars and full-length Dome Lounge for close-up viewing. Diner, Ranch Car, finest Pullmans.

**WESTERN STAR** daily streamliner both ways between Chicago and Seattle-Portland via St. Paul • Minneapolis • Grand Forks • Great Falls • Spokane. Excellent coach and Pullman accommodations.

*Great Northern Ticket Offices are located in principal cities of U.S. and Canada*

Your ticket or travel agent will gladly arrange transportation, lodging and side tours. (Rental cars available in Spokane, Wenatchee, Portland.)

For information write:  
Passenger Traffic Manager  
Great Northern Railway  
St. Paul 1, Minn., or



*Exciting education for the whole family!*

# Land of Great Dams

Your vacation in the "great dam country" offers almost continual contrast and variety—from bewildering sights of massive man-made structures to nature's own surrounding splendors: snow-crowned mountains, rushing streams, deep gorges and evergreen forests. Bring your camera and be prepared for countless "got-to-take-that-picture" views!

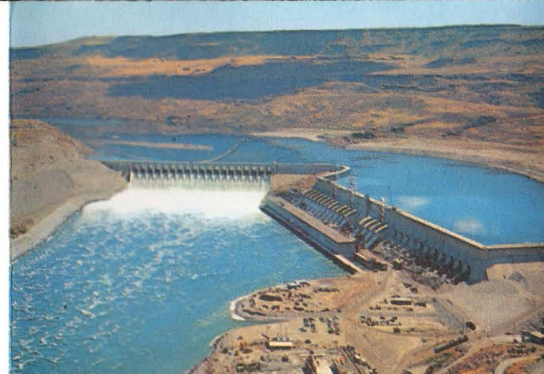
**COLUMBIA BASIN PROJECT** is a vast power-irrigation development—an astounding example of man's ingenuity. For here a vast, dry wasteland has been transformed into more than a million acres of lush, irrigated valleys and rich, rolling farmlands. A veritable Eden wrested from the wilderness! (The Basin abounds with golden grain, famous Washington State apples, and 50 other crops.)

**GEOLOGICAL WONDERS** invite exploration throughout the area—from Glacier National Park (near Hungry Horse Dam) and Colville National Forest

(above Grand Coulee) to the Columbia and Snake River Gorges. A typical striking phenomenon: 500-ft. Dry Falls of the Glacial Columbia, where once roared the mightiest cataract in history.

**RECREATION**—Hike a trail, catch a trout, hunt a deer. Swim in a man-created lake or brisk mountain pool. Visit a silver mine, logging camp or Indian reservation. Or—just relax and ride horseback at one of the Methow Valley's famed dude ranches. Vacation fun in the Land of the Great Dams is unlimited—and ever so accessible.

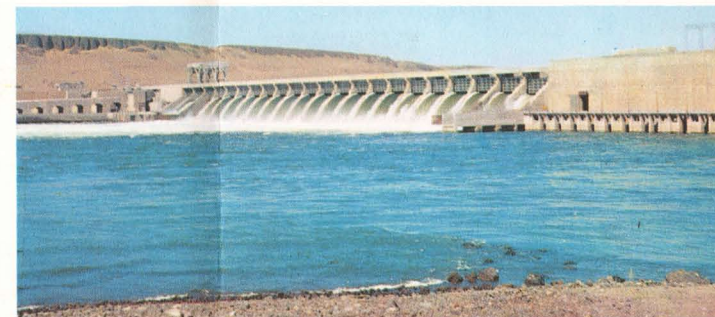
**Lush crops** now blanket an area the size of Delaware. In striking contrast—rugged, pine-festooned mountains and glacial peaks just a few hours away.



**Chief Joseph Dam**, living tribute to the gallant Nez Perce leader. A popular stop-over en route to famed Lake Chelan. (Okanogan country in foothills of Cascades.)



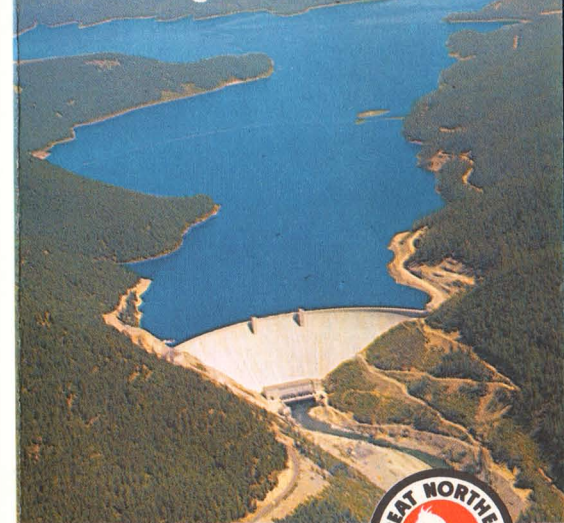
**Long "drink"** for thirsty croplands is supplied by irrigation network. Ultimate goals of Columbia Basin project include 4,500 miles of "feeder" waterways.



**"Injun country"** surrounds McNary Dam just south of fabulous Yakima Valley fruit orchards. History book names come alive as you visit nearby Old Fort Walla Walla and Sacajawea State Park.

# GREAT DAMS

Spectacular sights  
in the great Northwest



Hungry Horse Dam



*Go great...*

**GO GREAT NORTHERN**



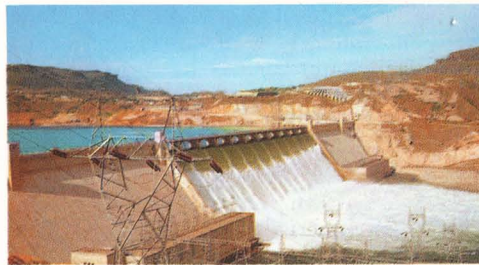
## Mighty miracles of modern man

The Columbia River rises in the Canadian Rockies and twists and turns and plunges 1,200 miles to the Pacific. Other rivers rush down from the Cascade and Olympic ranges. Knifing through spectacular mountains, plains, forests and gorges, these mighty waters mark trail for a glorious vacation tour. And their frothing turbulence is the key to nearly half of the nation's hydroelectric power.

To harness this great natural force and utilize its energy, engineers have built the greatest system of dams and power projects in history... a vast network that stretches from Hungry Horse in northwestern Montana to Bonneville, near Portland, up to the Cushman Dams near Puget Sound.

Many of these concrete titans dwarf New York skyscrapers, put the pyramids to shame. Grand Coulee, often called the "8th wonder of the world", is the largest single structure ever built by man. This great dam—a mecca for sightseers—has transformed arid wasteland into fertile fields and gardens, given birth to a city, helped create thriving industries.

Come follow the scenic Great Northern route to America's great dams. Explore nearby mountains and national parks. Fish and swim in cool, clean man-made lakes. See civilization bustling on the edge of wondrous wilderness!



**Power enough** to supply the needs of Chicago and San Francisco combined—14½ billion kw/hrs. is generated by Grand Coulee. Visitors welcome!

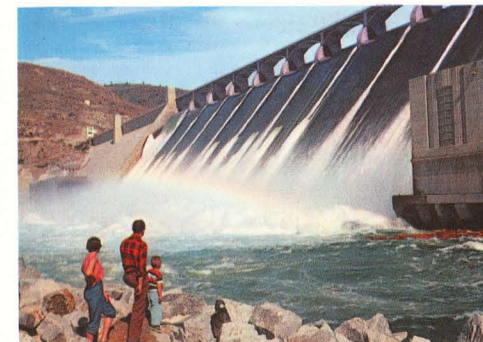


**Man-made lakes**—like 150-mile long Lake Roosevelt, formed by Grand Coulee—offer great fishing, swimming, boating. (Above: lake between Dam and Coulee City.)

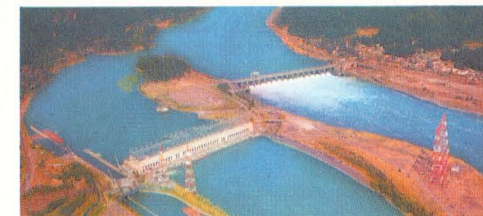


A thrilling adventure... following this

# Pathway of Power and Progress



**Twice as high as Niagara Falls**, spillway at Grand Coulee sends water crashing down 46 stories in a 15-acre curtain. Color-illuminated at night!



**Fighting salmon** are counted, marked and guided upstream over fish ladders at Bonneville Dam—40 scenic miles up the Columbia from Portland.