

**Scenic way to go...**

Great Northern's transcontinental streamliners take you up the Mississippi, through Minnesota's Land of Lakes, past Glacier National Park in the Montana Rockies, to Seattle or Portland. Great scenery all the way. Fun begins when you step aboard.

**EMPIRE BUILDER**

Daily between Chicago • St. Paul • Minneapolis • Spokane • Seattle-Portland. Great Dome Coaches and full-length Dome Lounge for scenic viewing. Diner, Ranch Car, excellent Pullmans.

**WESTERN STAR**

Also serves Grand Forks, Great Falls, Glacier National Park in the Montana Rockies. Diner, Coffee Shop Car, Lounge Car, fine coaches and Pullmans.

**GOOD CONNECTIONS** at Seattle or Portland for California points. Let Great Northern arrange all transportation, hotel accommodations and sightseeing side trips.

**GREAT NORTHERN TICKET OFFICES**  
IN PRINCIPAL CITIES OF U.S. AND CANADA

For information, write:  
Passenger Traffic Manager,  
Great Northern Railway,  
St. Paul 1, Minn., or



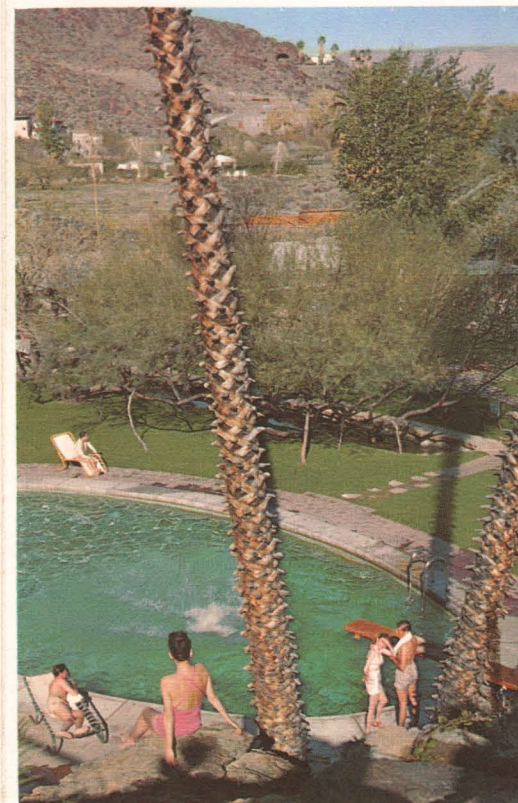
**CITY OF ANGELS** stretches over a larger area than any other in the world. Limited access "freeways" from principal suburbs converge on downtown Los Angeles.

*Big, glamorous, exciting!* **LOS ANGELES**



**TELEVISION CITY** near Hollywood... CBS-TV's Coast headquarters. Many star-studded network TV shows originate in this maze of huge and awesome studios.

There's never time for all you'll want to do in vast, sprawling, wonderful Los Angeles. Distances are enormous (13 miles from downtown to the ocean!) So plan carefully, and take your pick of these: Disneyland, Knott's Berry Farm, Ocean Park. TV and movie studios... stars' homes in Beverly Hills, Brentwood, Bel Air... Hollywood Bowl Symphony, Sunset Strip, restaurant row on La Cienega, fabulous Wilshire shops. Santa Monica beaches, Catalina, Marineland. Farmers Market, the Coliseum and the L.A. Dodgers! Whatever you do, you're bound to have fun.

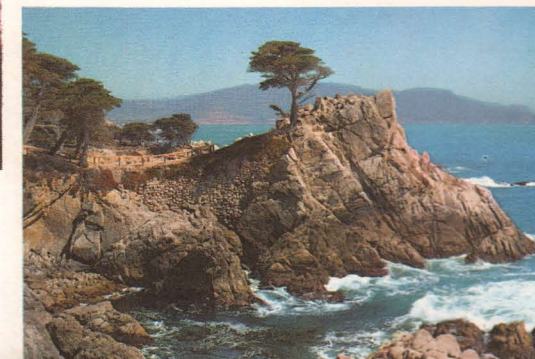


**PALM SPRINGS**, fabulous desert oasis at the foot of two-mile-high Mt. San Jacinto. Swimming pools everywhere! See the Racquet Club, fanciful restaurants, palatial homes. Just 107 miles from Los Angeles.



**ORANGE GROVES**, nestled in the sunny foothills of the San Bernardino Mountains. Magnificent in blossom time, many groves in this region bear big juicy navel oranges twice or more each year.

**MONTEREY PENINSULA**, a rewarding side-trip from San Francisco. Take the spectacular 17-mile drive past Pebble Beach, Del Monte Lodge to picturesque Carmel-by-the-Sea. Charming shops, restaurants.

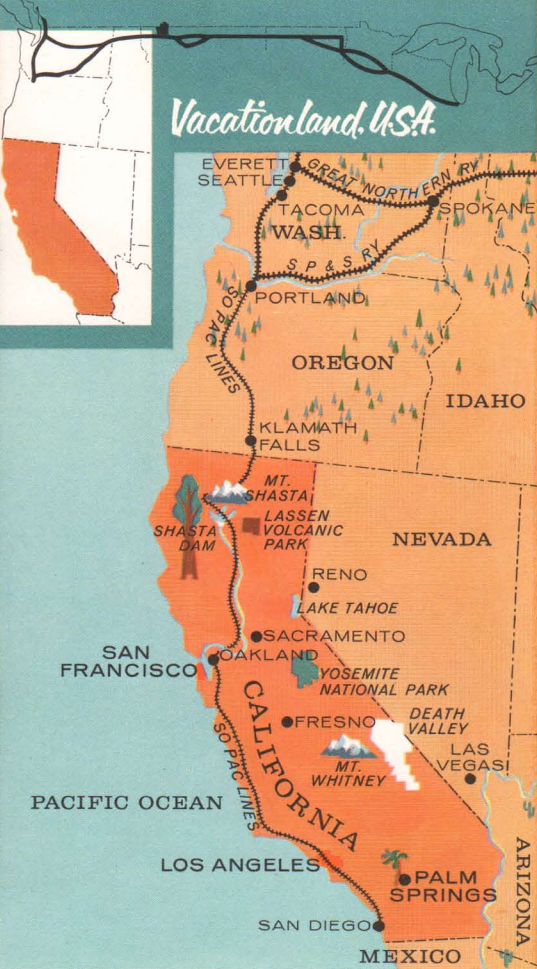


**CALIFORNIA**  
*via the evergreen*  
**PACIFIC NORTHWEST**



**GO GREAT...**  
**Go Great Northern**





## Every moment's golden in the Golden State

Vast and fabulous land of contrasts—that's California. Big? It's farther from San Francisco to Los Angeles than from Boston to Baltimore . . . farther from the Oregon border to San Diego than from New York to St. Louis, with glorious scenery every mile south from Portland via train.

Death Valley, in America's largest desert, is its hottest spot year round . . . yet San Francisco summer nights call for topcoats and furs.

Take a dip in Pacific salt water after breakfast; ski in the Sierras that afternoon. View Mt. Whitney, the highest peak, and Salton Sea, the lowest point in our land . . . all in a day. See Sequoia Park's giant redwoods, the oldest living things; and Hollywood's youngest and prettiest.

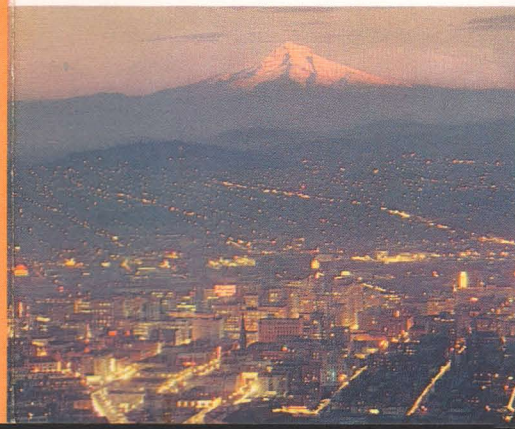
California's beaches are famous . . . its national parks and mountains, magnificent . . . its cities, enchanting. Yes, the combination of scenery and cities like Los Angeles, San Francisco, Sacramento and San Diego are what make this land such a vacationer's paradise.

Best way to enjoy the most of California—plus the finest scenery en route; go Great Northern to Seattle or Portland; then travel fine connecting trains the length of the Golden State.



**SEATTLE**, queen city of the evergreen Pacific Northwest. A pleasure-packed stop en route to California. Cruise on Puget Sound, visit Mt. Rainier, the Olympic Peninsula.

**PORTLAND**, city of roses and scenic rewards. See the majestic Columbia River Gorge, lofty snow-capped Mt. Hood before changing trains for the Golden State.



**MT. SHASTA**, 14,161-foot snow-mantled monarch of the High Sierras, is a spectacular sight from your train window.

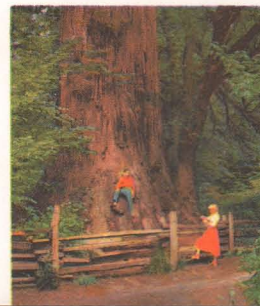


## NORTHERN CALIFORNIA

### Land of Many Wonders

There's far more to Northern California than big trees and lofty mountains like Shasta. You'll pass through dense national forests, cross wilderness streams teeming with trout. You'll see the world's highest overflow dam—Shasta Dam; Lassen Volcanic Peak and its lava formations. No other approach to California cities offers such unusual scenery.

**REDWOOD TREES** this big are commonplace in Northern California. Further south, giant Sequoias grow more than 250 feet tall, and date back to 2000 B.C.



## SAN FRANCISCO "Baghdad by the Bay"

Gay, cosmopolitan, compact! Sightseer's paradise . . . gourmet's Eden. Spectacular bridges . . . entrancing views of bay and ocean. Chinatown, cable cars, the baseball Giants! Fisherman's Wharf, Seal Rocks, teeming world port on the Embarcadero. Charming shops, superb hotels. You'll fall in love with San Francisco.

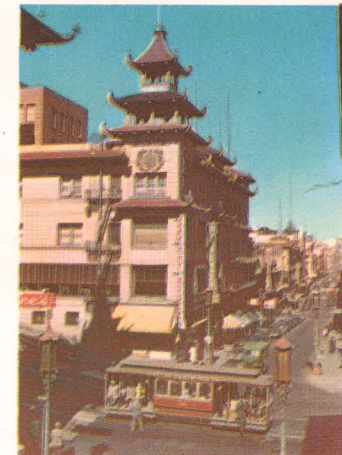


**THE SAN FRANCISCO — OAKLAND BAY BRIDGE** underlines the big city's impressive skyline. Over eight miles long, the span tunnels through Yerba Buena Island in mid-bay.



**CHINATOWN**, largest Chinese settlement outside the Orient. Ride a cable car to Grant Avenue, street of exotic shops.

**FISHERMAN'S WHARF**. The fleet harbored here supplies the world-famed sea fare served in the cluster of nearby restaurants.



Great way to California!