



The dramatic Memorial Coliseum is an inspiring and breath-taking addition to Portland's skyline.

MENU

SPOKANE, PORTLAND AND SEATTLE

R A I L W A Y



THE NORTHWEST

DINNER

(Price Opposite Entree is Cost of Complete Meal)

Crisp Celery	Olives	Carrot Slices
Soup du Jour	Choice of one	
Consomme, Hot or Jellied	Chilled Tomato or V-8 Juice	Orange-Grapefruit Cup
	Chilled Apple Juice	
ROAST PRIME RIBS OF BEEF - AU JUS		4.10
BAKED COLUMBIA RIVER SALMON FILLET		3.65
BAKED SWISS STEAK, MUSHROOM SAUCE		3.65
CHICKEN a la KING - BISCUIT		3.50
Potatoes		Vegetable
	Salad	
	Choice of Dressing	
Hot Tea Biscuits	Assorted Bread	
Fresh Baked Pie	Vanilla Ice Cream, Cookies	
Cheese, Toasted Wafers	Half Grapefruit	
Coffee	Tea	Milk

STEAK WITH ABOVE DINNER \$5.40

PLATE DINNER

No. 2 — \$2.60		
Chef's Suggestion		
or		
Potatoes	Ham or Cheese Omelet	Vegetable
	Assorted Bread	
	Ice Cream — Cookies	
Coffee	Tea	Milk

Steward _____

Will appreciate any errors or omissions in service being called to his attention.

Employee
den to s
al or

Please
number
selection

BEVER

Beer
Whisky-
Bourbo
Rye,
Scotch
Blended W
Vodka Co
Screw Dr
Gi
Cocktails
Dry Mart
Manhatta
Old Fashi

Hi-Balls w
water, l

Wines—
Sauterne
Sherry,
Port,

Club Soda
Ginger
Seven-
Coca-C

Alcoholic Beverage
where laws, regul
permit. No sales o
or Cigars to minors
in presence of guest

H. WENTZIEN, S



A LA CARTE

Crab or Shrimp Cocktail, 1.00

Fruit Cocktail, .85

RELISHES

Hearts of Celery, .35

Olives, .35

Sweet Pickles, .20

Sliced Tomatoes, .45

SOUPS

Chicken, .55 Vegetable, .55 Cream of Mushroom, .55 Consomme, .55

Soup of Today (Cup), .35 Tureen, .55

ENTREES

Plain Omelet, .75

All Combination Omelets, 1.15

Lamb Chops (3) on Toast, 1.90

Ham or Bacon with Eggs, 1.50

Broiled N.Y. Cut Steak, 3.75

Swiss Steak, 1.70

Roast Beef, 1.90

Chicken a la King, 1.60

Domestic Sardines, .75

Available Fresh Fish, 1.60

VEGETABLES

Parsley Potatoes, .30

Whole Kernel Corn, .35

Stringless Beans, .35

Potatoes to Order, .35

Green Peas, .35

Stewed Tomatoes, .30

SALADS

Orange and Grapefruit, 1.05

Lettuce and Tomato, .85

Head Lettuce, .60

Fruit, 1.05

SANDWICHES

Bacon, Lettuce and Tomato, 1.05

Cheese, .75

Tuna Fish Salad on Toast, .95

Roast Beef, 1.05

Sliced Chicken on Toast, 1.05

DESSERTS

Fresh Baked Pie, .45 Ice Cream, .25; with Cookies, .35 Half Grapefruit, .30

Cheese and Toasted Crackers, .55

Canned Fruits, .35

BREADS and BEVERAGES

Assorted Breads, .35

Tea Biscuits, .30

Milk Toast, .55

Toast, Dry or Buttered, .35

Coffee, pot, .30

Instant Sanka Coffee, pot, .30

Postum, pot, .30

Tea, pot, .30

Hot Chocolate, pot, .30

Sweet Milk or Buttermilk, .20

Malted Milk, .35

Hot Breads and Pies are Baked on this Car daily.

A service charge of Fifty Cents is made for each adult person served outside dining car
(Items Served in Washington Subject to Tax)

Parents may share their portions with children without extra charge.

s forbid-
serve verb-
orders.

order by
and write
on check.

RAGES

, .45

—Bonded

on, 1.00

1.00

n, 1.05

Whisky, .85

llins, 1.00

iver, 1.00

n, .75

ini } .85
n
oned

ith charged
5c extra

...

Domestic

, Pt. 1.10

Pt. 1.10

Pt. 1.10

, Split .15

Ale, .15

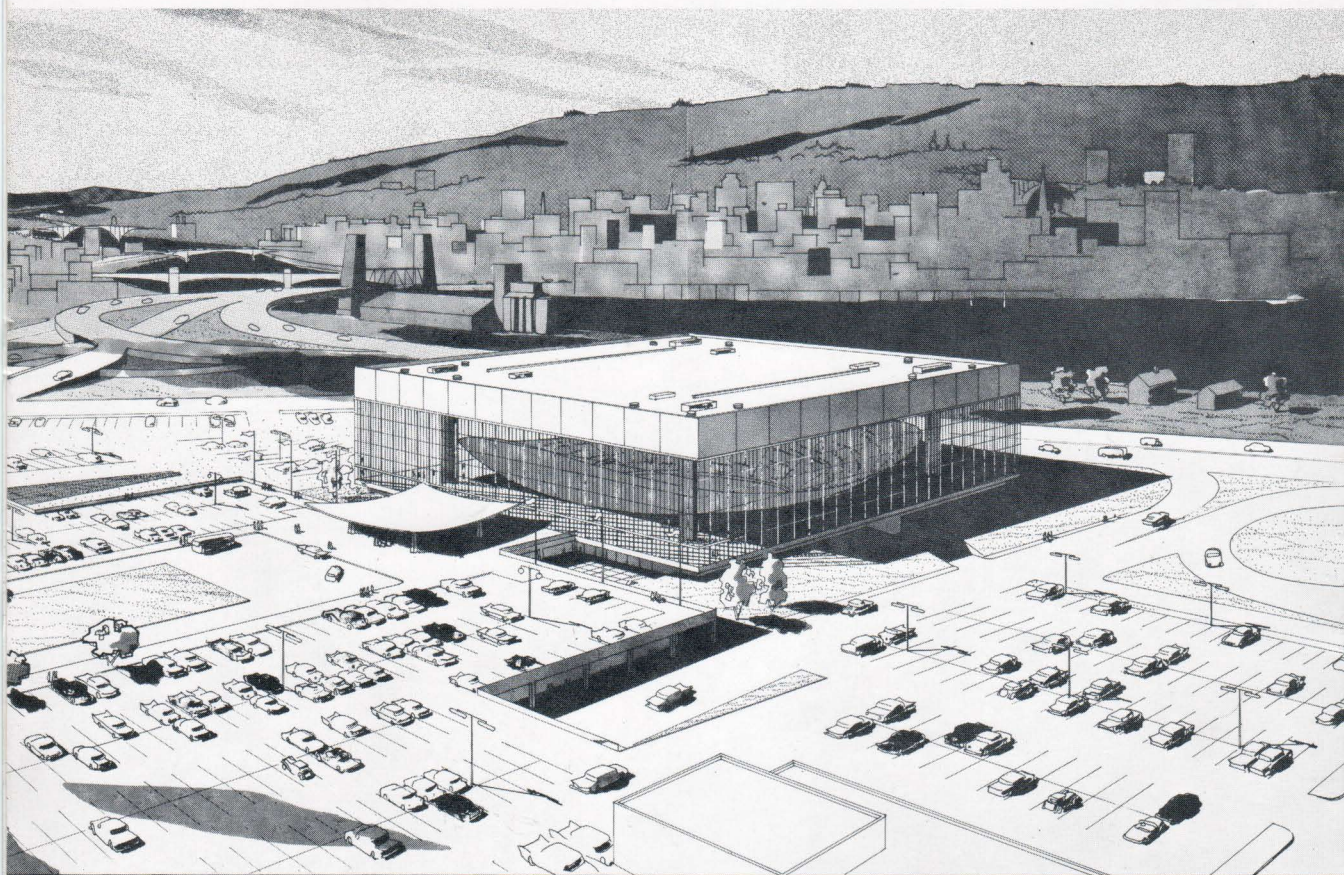
Up, .15

ola, .15

s will only be sold
ations and license
Liquors, Cigarettes
All bottles opened
s.

UPT. DINING CARS

7-65



MEMORIAL COLISEUM

Portland, Oregon

Dedicated as a living memorial to the war dead in January, 1961, Portland's majestic Memorial Coliseum is the largest and most spectacular multi-purpose facility of its kind in the entire Northwest.

Constructed at a cost of \$8,000,000, the "Glass Palace," as Portlanders have come to call it, is situated on the East banks of the Willamette River between the Broadway and Steel Bridges.

Perfectly suited for all kinds of events, ranging from Basketball and Ice Hockey games to large Conventions and Trade Shows, the completely air-conditioned coliseum is a masterpiece of design and beauty.

It provides parking for approximately 2,000 cars on the site and will facilitate crowds in excess of 12,500 people. The vast arena is encircled by 9,000 upholstered, theater-type seats and is enhanced by the absence of pillars. There is also a huge exhibit hall (53,000 square feet) and eight meeting rooms with capacities from 120 to 1,200 persons.