

OCTOBER 26, 1958
Subject to change without notice



The Northwest's Own Railway

THROUGH SERVICE

VIA

NORTH COAST
LIMITED

EMPIRE
BUILDER



TIME TABLES

Pacific Standard Time

TRAVEL THE
COLUMBIA RIVER
SCENIC ROUTE
THROUGH THE
CASCADE RANGE

OCTOBER 26, 1958
Subject to change without notice



The Northwest's Own Railway

THROUGH SERVICE

VIA

NORTH COAST
LIMITED

EMPIRE
BUILDER



TIME TABLES

Pacific Standard Time

TRAVEL THE
COLUMBIA RIVER
SCENIC ROUTE
THROUGH THE
CASCADE RANGE



SPokane, PORTLAND AND SEATTLE RAILWAY SYSTEM

S. P. & S. RY. — OREGON TRUNK RY. — OREGON ELECTRIC RY. — (Subsidiaries of Northern Pacific and Great Northern Railways)

TRANSCONTINENTAL TRAIN SERVICE—BETWEEN PORTLAND, PASCO AND EAST

SPokane, PORTLAND AND SEATTLE, NORTHERN PACIFIC AND CHICAGO, BURLINGTON AND QUINCY RAILWAYS

West Bound, Read Down

Eastbound, Read Up

Daily C. B. & Q. 31	Daily The Main- streeter C. B. & Q. 47	Daily North Coast Ltd. No. 25	Chicago, Burlington and Quincy Railway (Central Time)	Mil. f'm Prt No. 26	Daily North Coast Ltd. No. 26	Daily The Main- streeter C. B. & Q. 48	Daily C. B. & Q. 22
2.00 b2.36 4.10 6.18 8.46	11.00 11.41 1.51 2.24 4.37 7.35	12.10 b12.47 2.24 4.36 6.55	Lv Chicago (Union Station).....Ar 2327 Lv Aurora.....Ar 2289 Lv Savanna.....Ar 2182 * LaCrosse.....Ar 2030 Ar St. Paul (Union Station)....Lv 1900	1.45 12.56 11.19 9.04 7.00	7.55 7.10 5.16 2.04 11.20	2.45 2.05 12.32 10.21 8.25	
③N.P.3	N.P.1		Northern Pacific Railway		N.P.2	③N.P.4	
8.50 9.35	8.40 9.15	7.15 7.45	Lv St. Paul (Union Station)....Ar 1900 Lv Minneapolis (Hen. Av. Stn.)Ar 1890	6.40 6.10	10.15 9.42	7.15 6.40	
6.05 6.16	7.25 7.39	6.05 6.16	Lv Duluth.....Ar 1881 * Superior.....Ar 1877	7.30 7.14	10.55 10.34	7.30 7.14	
1.15 5.30 8.35 11.28 11.10 2.10 ④4.46	11.51 2.30 4.27 6.30 6.57 8.10 10.43 12.35 1.45 4.23	9.56 11.55 1.30 3.10 5.17 6.12 7.32 8.32 10.25	Lv Staples.....Ar 1733 * Fargo.....Ar 1622 * Jamestown.....Ar 1530 * Bismarck.....Ar 1428 * Mandan (Mountain Time)....Ar 1423 * Dickinson.....Ar 1322 * Glendive.....Ar 1217 * Miles City.....Ar 1138 * Forsyth.....Ar 1093 Lv Billings.....Ar 991	3.44 1.42 12.03 10.20 9.04 7.16 5.14 3.48 2.56 1.06	6.55 4.05 2.13 12.31 11.08 9.03 6.36 4.51 3.42 1.23	1.56 10.15 7.35 4.50 3.20 12.30 9.45	
.....	#9.45	Lv Gardiner (Yel. Nat'l Park)Ar 929	
.....	7.25 8.27 11.30 11.30	12.33 1.19 3.49 3.20	Lv Livingston.....Ar 875 * Bozeman.....Ar 851 * Butte.....Ar 756 * Helena.....Ar 753 * Garrison.....Ar 704 * Missoula.....Ar 636 * Paradise (Pacific Time)....Ar 565 * Sandpoint.....Ar 446 * Athol.....Ar 418 Ar Spokane (N.P. Station)....Lv 378	10.56 10.11 7.40 7.35 6.29 5.08 2.17 10.45	10.43 9.45 6.25 6.45 4.45 2.56 11.56 9.40 9.03 8.18 2.15 10.35 9.40 8.30	
N.P.5	Lv Spokane (N.P. Station)....Ar 378 Ar Pasco.....Lv 231	10.38 7.50	7.58 4.50	N.P.6	
7.25 10.35	8.50 12.01	10.53 1.33				6.50 3.35	
S.P.S. No. 5	S.P.S. No. 3	S.P.S. No. 1	Spokane, Portland and Seattle Railway	S.P.S. No. 2	S.P.S. No. 4	S.P.S. No. 6	
2.50 5.35 7.50 8.20	1.05 3.25 5.30 *6.00	2.55 5.00 6.50 7.15	Lv Pasco.....Ar 231 Ar Wishram.....Lv 106 * Vancouver.....Ar 10 Ar Portland (Union Station)....Lv 0	7.10 5.05 3.23 3.00	2.15 12.05 10.10 9.45	2.00 11.25 8.55 8.30	

3-21-43	29	C.B. & Q. Connections at Billings for Denver & Mo. River Points	30	42-20-12
8.45 5.00 6.35 10.20 12.25 7.15	Lv St. Louis (Wab.).....Ar Lv Kansas City (CB & Q)....Ar Lv St. Joseph.....Ar Lv Omaha.....Ar Lv Lincoln.....Ar Ar Billings.....Lv	9.45 1.15 11.41 8.20 6.50 11.00
.....	9.40 5.20	Lv Denver.....Ar Ar Billings.....Lv	7.15 1.15

a—Stops to let off or pick up revenue passengers from or to Missoula and east or Pasco and west where scheduled to stop.

b—Stops to receive revenue passengers for all scheduled stops.

c—Stops to discharge revenue passengers from west of Minneapolis.

*Passengers may remain in sleeping cars at Portland until 7:30 A.M.

#Daily, except Sunday.

① Arrive ② Leave Glendive daily except Sunday.

③ Leave St. Paul daily except Saturday.

EQUIPMENT

VISTA-DOME NORTH COAST LIMITED BETWEEN CHICAGO AND PORTLAND

All Lightweight Equipment

S. P. & S. 1-2, N. P. 25-26, C. B. & Q. 25-26

STANDARD SLEEPER-CLUB-LOUNGE CAR—With 6 roomettes, 3 double bedrooms. Between Pasco and Portland. (Car 10 westbound, Car 20 eastbound.)

OBSERVATION LOUNGE-SLEEPING CAR—Between Chicago and Pasco. Four double bedrooms, 1 compartment, spacious lounge, radio, library, writing desk. Buffet service. (259 westbound, 269 eastbound.)

STANDARD SLEEPING CAR—Between Chicago and Portland. Newest type all-room car. 3 double bedrooms, 1 compartment, 6 roomettes, 8 duplex roomettes. (257 westbound, 267 eastbound.)

VISTA-DOME COACH—Between Chicago and Portland. Chaise lounge "sleepy hollow" seats with leg rests for reclining full length. (C252 westbound, C262 eastbound). Seats reserved in advance. No extra charge.

LEWIS & CLARK TRAVELLER'S REST BUFFET-LOUNGE CAR—Between Chicago and Pasco. Select and a la carte meals, snacks and beverages, magazines, lounge section.

DINING CAR SERVICE—Between Chicago and Portland. Club breakfasts, \$1.55 to \$2.20; Table d'hote dinner, \$3.40; Table d'hote luncheon, \$2.60. Special plate luncheons and dinners, \$2.20. Also a la carte service.

STEWARDESS NURSE SERVICE—A Stewardess, who is also a registered nurse, is a member of the train personnel between Chicago and Pasco.

TICKETS—All classes of regular and reduced rate rail tickets will be honored for passage on the North Coast Limited.

THE MAINSTREETER

BETWEEN CHICAGO AND PORTLAND

S. P. & S. 3-4, N. P. 1-2, C. B. & Q. 47-48

SLEEPER-BUFFET-LOUNGE CAR—Between Spokane and Portland. (Car 30 westbound, car 40 eastbound.)

HOLIDAY LOUNGE—Between St. Paul and Pasco—Luxurious new Lounge car; lounge section with snack and beverage service open to all passengers.

STANDARD SLEEPING CARS—Between Chicago and Spokane 8 Duplex Roomettes, 3 Double Bedrooms, 1 Compartment and 6 Roomettes. (105 westbound, 205 eastbound.)

Through passengers will make station taxicab transfer at Spokane at no additional cost.

DINING CAR SERVICE—Between St. Paul and Pasco.

DELUXE RECLINING SEAT COACHES—Between Chicago and Pasco. Between St. Paul and Portland.

S. P. & S. No. 5 - 6, (Diesel Power), N. P. No. 5-6

COLUMBIA RIVER EXPRESS

BETWEEN SPOKANE, PASCO AND PORTLAND

Reclining seat coach between Pasco-Portland and between Spokane-Pasco.

Light face figures denote A.M. time.

Bold face figures denote P.M. time.

Ar. Arrive.

Lv. Leave.

/Stop on Signal.

S. P. & S. RY. — OREGON TRUNK RY. — OREGON ELECTRIC RY. — (Subsidiaries of Northern Pacific and Great Northern Railways)



VIA CHICAGO, BURLINGTON & QUINCY AND GREAT NORTHERN
SPOKANE, PORTLAND AND SEATTLE RAILWAYS

Westbound, Read Down				Eastbound, Read Up							
Daily Western Star		Daily Empire Builder		Chicago, Burlington and Quincy Railroad		Miles from Portland		Daily Empire Builder		Daily Western Star	
No. 47		No. 31		(Central Time)				No. 32		No. 48	
11.00		2.00		Lv Chicago (Un. Stn.).....Ar		2260		2.00		7.55	
11.41		②2.36		" Aurora....."		2222		③1.18		7.10	
1.51		4.10		" Savanna....."		2115		11.39		5.16	
4.37		6.18		" LaCrosse....."		1963		9.21		2.04	
7.35		8.46		Ar St. Paul (Un. Stn.).....Lv		1833		7.15		11.20	
C'h's only								C'h's only			
No. 27		No. 3		Great Northern Ry.						No. 4	
9.30		8.30		9.10		Lv St. Paul (Un. Stn.)...Ar		1833		7.00	
10.03		9.00		9.40		" Minneapolis (GN Stn.)..Ar		1822		6.25	
11.45		11.12		12.55		Lv Willmar.....Ar		1731		4.40	
1.50		10.18		12.55		" Breckenridge....."		1618		2.42	
		10.18				" St. Cloud....."				8.38	
		12.24				" Fergus Falls....."				6.18	
2.55		3.05		1.50		" Fargo....."		1571		1.23	
		3.49		3.49		" Grand Forks....."		1493			
5.13		7.30		5.35		" New Rockford....."		1447		10.57	
6.55		10.15		7.55		Ar Minot.....Lv		1338		8.55	
		9.30		7.05		Ar Williston (Central Time) Lv		1218		6.30	
		12.40		①9.45		Lv Williston (Mountain " Ar		1218		5.20	
		4.01		12.26		" Glasgow.....Ar		1062		2.45	
						" Havre....."		909		11.50	
		7.01		③3.20		Ar Great Falls.....Lv		903		⑧8.50	
		7.25				Lv Great Falls.....Ar		903			
		10.15		2.15		Lv Shelby.....Ar		804		10.03	
		10.50		2.48		" Cut Bank.....Ar		780		9.35	
11.50		1.28				" Glacier Park....."		733			
1.56		1.56				" Belton....."		676			
						" Columbia Falls....."		661			
		①1.30		②5.40		Lv Kalispell.....Ar		676		②7.00	
		2.05		6.00		Lv Whitefish.....Ar		653		6.25	
		5.05				" Libby.....Ar		537			
		5.30		8.50		Ar Troy (Mountain Time) ..Lv		519		3.30	
		4.35		7.60		Lv Troy (Pacific Time)....Ar		519		2.30	
		5.28				" Bonner's Ferry....."		488			
		6.09				Lv Sandpoint.....Ar		454			
		8.00		11.20		Ar Spokane (GN Stn.)....Lv		379		11.05	
				Spokane, Portland and Seattle Railway							
No. 3		No. 1						No. 2		No. 4	
9.45		11.59		Lv Spokane, (GN Stn.) ..Ar				379		10.25	
1.05		2.55		" Pasco.....Lv				231		7.25	
3.25		5.00		Ar Wishram.....Lv				106		5.05	
5.30		6.50		" Vancouver....."				10		3.23	
*6.00		7.15		Ar Portland (Un. Stn.)....Lv				0		3.00	
										6.10	
										2.45	
										12.05	
										10.10	
										9.45	

(Lightweight Streamlined Equipment Only)

CB&Q 31-32, GN 31-32, SP&S 1-2

Standard Sleeper-Club-Lounge car with 6 Roomettes, 3 Double Bedrooms,
between Spokane and Portland. (Car 10 Westbound, Car 20 Eastbound.)

Great Dome Buffet-Lounge. Luxurious full length Dome Lounge with colorfully appointed Beverage Lounge in lower section between Chicago and Spokane.

Standard Sleepers offering seven latest types of Pullman accommodations. Drawing Rooms, Compartments, Double Bedrooms, Duplex-Roomettes, Lower and Upper Berths. Between Chicago and Portland, one sleeper (311 Westbound, 321 Eastbound). Advanced reservations of Pullman accommodations may be made at any time prior to scheduled departure except as follows: Pullman space on the "Empire Builder" for intermediate travel between any two stations west of Havre or between any two stations east of Havre may not be reserved until 48 hours prior to train departure time eastbound from Portland or westbound from Chicago.

Great Dome Coach. Reclining seats with leg rests, forming a couch for sleeping. Radio reception. Between Chicago and Portland one 46-seat coach (103 Westbound, 203 Eastbound). Advance coach seat reservations should be made so that definite coach seat assignment may be obtained before departure. All seats reserved in advance (including seat for children under 5 years of age) at no extra charge.

DeLuxe Coach between Spokane and Portland, 56 reclining seats. (Seats not reserved.)

The Coffee Shop Car—Between Chicago and Spokane. Radio reception. Coffee shop with counter and table service at economical meal prices. Club breakfasts: fruits and fruit juices, cereals, eggs, toast, rolls, doughnuts and beverages. Plate luncheons and dinners. Soups, sandwiches, salads, desserts and beverages available throughout the day.

Dining car with the most modern furnishings, decor and semi-private dining sections between Chicago and Portland. Radio reception. Traditional famous Great Northern meals. Club breakfasts, plate luncheons, table d'hôte luncheons, plate dinners, table d'hôte dinners. Also a la carte service for all meals.

To avoid standing in line for dinner, passengers have the choice of one hour dining periods beginning at 5 P.M. Passenger Representatives on the train arrange dinner reservations.

Tickets. Tickets endorsed Clergy, Charity, Employee, D.V.S., V.A.H., Blind and Attendant, Circus, Show, Banana Messenger, Drover's or Caretaker's tickets and Livestock Contracts will not be honored.

Baggage. Limited amount of checked baggage will be handled.

THE STREAMLINED WESTERN STAR (Lightweight Streamlined Equipment)

CHICAGO-PORTLAND NO EXTRA FARE

CB&Q 47-48, GN 3-4, SP&S 3-4

ALL CLASSES OF TICKETS HONORED

Sleeper-Buffer-Lounge Car between Spokane and Portland—(Car 30 Westbound, Car 40 Eastbound).

Standard Sleeping Cars offering modern Pullman accommodations between Chicago and Portland, one car containing 4 Sections, 8 Duplex Roomettes and 4 Double Bedrooms. Double Bedrooms are connecting and may be sold ensuite (32 Westbound, 42 Eastbound).

Streamlined Day-Nite Coaches between Chicago and Spokane. Deluxe coaches between Spokane and Portland.

Buffet Service between Spokane and Portland.

Dining Car Service between St. Paul and Spokane. Traditional famous Great Northern meals. Club breakfasts, plate luncheons, table d'hote luncheons, plate dinners, table d'hote dinners. Also a la carte service for all meals.

Lounge-Observation Car between Chicago, St. Paul and Minot.

*Passengers may remain in sleeping cars at Portland until 7:30 A. M. ①Stops to receive revenue passengers for all scheduled stops. ②Stops to discharge revenue passengers from west of Minneapolis. c—No. 31 stops at Glasgow to discharge revenue passengers from Minot and East and to receive revenue passengers for Spokane and West where No. 1 is scheduled to stop. d—No. 32 stops at Glasgow to discharge revenue passengers from Spokane and West and to receive revenue passengers for Minot and East where No. 2 is scheduled to stop. e—No. 31 stops at Cut Bank to discharge revenue passengers from Williston and east and to receive revenue passengers for scheduled stops Spokane and West. g—No. 32 stops at Cut Bank to discharge revenue passengers from Spokane and West and to receive revenue passengers for scheduled stops Williston and East. ④ Bus service, rail tickets honored.

SPOKANE, PORTLAND AND SEATTLE RAILWAY SYSTEM

S. P. & S. RY. - OREGON TRUNK RY. - OREGON ELECTRIC RY. - (Subsidiaries of Northern Pacific and Great Northern Railways)



PORTLAND - REDMOND - BEND TRAINS

Read Down		Read Up			
No. 105 Sat. Only	No. 103 Daily Ex. Sat. & Sun.	Oregon Trunk Ry.		Miles from Prt'd	No. 102 Daily Ex. Sun.
3618	7.00	Lv Bend	Ar	257.6	7.00
3572	7.11	Deechutes		250.3	6.35
2983	7.30	Redmond		240.7	6.15
2918	7.35	Prineville Jct.		238.4	5.50
2863	7.40	Terrebonne		235.6	5.45
2850	7.52	Opal City		227.7	5.31
2624	8.02	Culver		221.1	5.18
2517	8.12	Metolius		216.3	5.10
2458	8.25	Madras		211.1	5.00
2169	8.35	Paxton		205.9	4.34
1787	8.51	Gateway		200.1	4.18
1254	9.13	South Jct.		191.9	3.56
	9.18	Axford		189.0	3.49
1203	9.24	Kaskela		186.2	3.45
1074	9.40	Hardy		179.7	3.31
1012	9.50	Dant		173.6	3.19
960	9.57	Nena		169.9	3.11
852	10.20	Maupin		160.7	2.53
788	10.28	Tuskan		156.9	2.45
783	10.35	Sherar		153.4	2.39
606	10.51	Oakbrook		145.8	2.23
510	11.10	Sinamox		136.5	2.04
508	11.18	Dike		132.5	1.55
354	11.35	Lockit		124.4	1.38
286	12.01	Moody		112.0	1.13
166	12.15	Ar Wishram	Lv	106.1	1.00

SAVE MONEY ON HALF-FARE FAMILY TRAVEL PLAN!

Take advantage of our Family Fares. Start your going trip on Monday, Tuesday, Wednesday or Thursday, with return any day of the week.

ONE-WAY TRAVEL—Head of family pays regular one-way fare, first class or coach, other parent and children, 12 through 21, each pay half fare. Children 5 through 11, pay one-quarter fare. Children under five are carried free.

ROUND-TRIP TRAVEL—Head of family pays regular round trip fare, first class or coach, other parent and children, 12 through 21, each pay one-way fare for the round trip. Children, 5 through 11, pay half of the one-way fare for round trip. Children under five are carried free.

For details consult any Spokane, Portland and Seattle Railway travel representative.

FREIGHT SERVICE ONLY

is operated on the following Branches

S. P. & S. Railway

GOLDENDALE BR.

Miles	STATIONS
0	Lyle
10.3	Pitt
13.4	Klickitat
16.9	Wahkiakus
30.2	Warwick
35.3	Centerville
41.6	Goldendale

KEASEY BRANCH

Miles	STATIONS
0	Portland
7.3	Linnon
11.7	Burlington
17.1	Bowers Junction
21.9	North Plains
27.5	Banks
31.7	Manning
43.1	Braun
48.5	Vernonia
57.0	Keasey

HAMMOND BRANCH

Miles	STATIONS
0	Warrenton
1.8	Flavel
2.7	Hammond

Oregon Electric Railway

PORTLAND-SEALM-ALBANY-EUGENE LINE

Miles	STATIONS
0	Portland
21.5	Forest Grove Jct
27.6	Beaverton
32.1	Tigard
36.1	Tualatin
39.0	Tonquin
43.0	Wilsonville
49.1	Donald
57.4	St. Louis
63.1	Hopmere
64.1	Quinaby
71.2	Salem
79.9	Orville
96.5	Albany Yard
97.8	Albany
124.2	Harrisburg
128.7	Junction City
142.8	Eugene

FOREST GROVE BRANCH

Miles	STATIONS
0	Forest Grove Jct
0.8	Orengo
4.5	Hillsboro
7.9	Cornelius
10.6	Forest Grove

SANTIAM BRANCH

Miles	STATIONS
0	Albany Yard
4.5	Proman
6.7	Fry
8.4	Goltra
10.3	Tallman
14.8	Lebanon
15.9	Weldwood
20.2	Waterloo
22.1	Nye
28.8	Sweet Home
31.9	Foster
0	Sweet Home
6.4	Holley
8.1	Callapooya
11.8	Mitchell
15.5	Dollar

PACIFIC TRAILWAYS

Read Down			PORTLAND - BEND			Read Up		
Dly.	Dly.	Dly.				Dly.	Dly.	Dly.
6.15	3.15	7.30	Lv PORTLAND	Ore	Ar	5.55	1.20	5.15
9.23	6.25	10.45	Ar Madras	Ore	Lv	2.40	10.05	2.05
10.00	7.08	11.28	Ar Redmond	Ore	Lv	2.05	9.25	1.22
10.25	7.35	12.01	Ar BEND	Ore	Lv	1.45	9.00	1.00

Rail tickets routed via OT - S. P. & S. Railways from or to Central Oregon points will be honored to or from Portland, Oregon by the Mt. Hood Stages (Pacific Trailways). Ask agent for details. * Except Sundays and holidays.

FREIGHT SERVICE

Route your freight shipments via the Spokane, Portland and Seattle Railway for fast and dependable service—between Portland, Astoria, Pasco, Spokane, Yakima, Walla Walla, Pendleton, Lewiston, Bend and all points east and south.

Let Us Handle Your Transportation Problems

FREIGHT SERVICE ONLY

Portland — St. Helens — Astoria Line

0	Portland	71.2	Westport
7.3	Linnon	73.5	Wauna
19.9	Scappoose	76.8	Bradwood
27.6	St. Helens	86.5	Knappa
41.9	Prescott	99.7	Astoria
45.8	Rainier	105.6	Warrenton
58.0	Locoda	108.3	Camp Clatsop
62.2	Clatskanie	118.0	Seaside

EQUIPMENT BETWEEN PORTLAND and BEND

Trains Nos. 4-102 and 105-3. Coaches daily between Portland and Wishram and Daily except Sunday between Wishram and Bend. Observation Lounge Buffet cars daily between Portland and Wishram. See pages 2, 3 and 4.

RAIL TRAVEL CREDIT CARD PLAN

permits purchase of Rail and Pullman tickets from any S. P. & S. Ry. Co. agent on Credit by securing a Credit Card from the Rail Travel Credit Agency, Room 436 Union Station, Chicago, Ill.

"DRIVURSELF" RAIL-AUTO SERVICE

provides a new automobile at your destination or stop over point. Ask the agent for further details on any of the above plans.



You can CHARGE TELEGRAMS

Anywhere

Simply write your message on a telegraph blank (available on all Trains) and include your own name and address. Give it to any of the Train's personnel for sending. The charges will be billed to you at home or business.

On any Occasion
it's wise
to wire

WESTERN UNION

Light face figures denote A.M. time.

Bold face figures denote P.M. time.

Ar. Arrive.

Lv. Leave.

/Stop on Signal.

t Telegraph Office.



SPOKANE, PORTLAND AND SEATTLE RAILWAY SYSTEM

S. P. & S. RY. - OREGON TRUNK RY. - OREGON ELECTRIC RY. - (Subsidiaries of Northern Pacific and Great Northern Railways)

GENERAL INFORMATION

NOTE—This folder has been compiled with care, but may contain errors. Furthermore, it is sometimes necessary to change schedules without notice, trains shown are sometimes unavoidably delayed and connections missed. We hope none of our patrons will be inconvenienced by any of these causes, but the Railway Company will not be liable therefor.

ADJUSTMENT OF FARES. In cases of dispute with conductors or agents, passengers should pay fare required, take receipt and communicate with Auditor Revenue Accounts, S. P. & S. Ry., Box 571, Portland 7, Ore.

REDEMPTION OF TICKETS. Wholly unused tickets will be redeemed by selling agent. Partly used tickets will be redeemed under tariff regulations on application to Auditor Revenue Accounts.

TICKET LIMITS. Tickets will be honored for continuous passage to destination when presented not later than 4:00 a.m. standard time of the day following date of expiration as punched or otherwise shown on ticket. One-way tickets will be honored for passage within 30 days, round-trip tickets 6 months, in addition to date of sale.

FEDERAL TAX. Fares quoted in this folder do not include 10% Federal tax.

STOPOVERS will be allowed at all regular scheduled stops within limits, on application to Conductor.

CHILDREN'S FARES. Children under five years of age, when accompanied by parent or guardian, will be carried free of charge. Children five years of age and under twelve years of age will be charged one-half of the adult fares. Children of five and under twelve years of age who are not mature enough to take care of themselves when traveling alone must not be ticketed unless accompanied by parent or guardian. Children twelve years of age and over will be charged the adult fare.

MARK YOUR BAGGAGE. All baggage should show name and permanent address of owner. Appropriate gummed labels may be secured from Ticket or Baggage Agent.

HAND BAGGAGE in Pullmans is restricted to what can be conveniently placed in berth or at seat occupied by passenger.

BAGGAGE MAXIMUMS. Ordinarily 150 lbs. is free allowance for each adult ticket. No single piece of baggage exceeding 300 pounds in weight, or exceeding \$2500.00 in value will be checked. Free allowances are subject to tariff stipulation as to contents, weight, value and size.

BAGGAGE INSURANCE. A charge of only twenty-five cents is made for each hundred dollars value declared above \$100 for baggage checked for each adult passenger and above \$50 for each half-fare ticket. The maximum baggage valuation which may be insured on a single ticket is \$2500.

LIMITED LIABILITY. Excess value of baggage must be declared and paid for at time of checking.

BICYCLES (not motorcycles), baby carriages, dogs and guns are carried in baggage cars subject to tariff regulations.

LOST ARTICLES should be inquired for at the Baggage Office, Union Station, Portland, Oregon, or S. P. & S. Station, Spokane, Wash.

RESPONSIBILITY. No responsibility is assumed for unchecked articles left in stations or cars.

GENERAL OFFICES

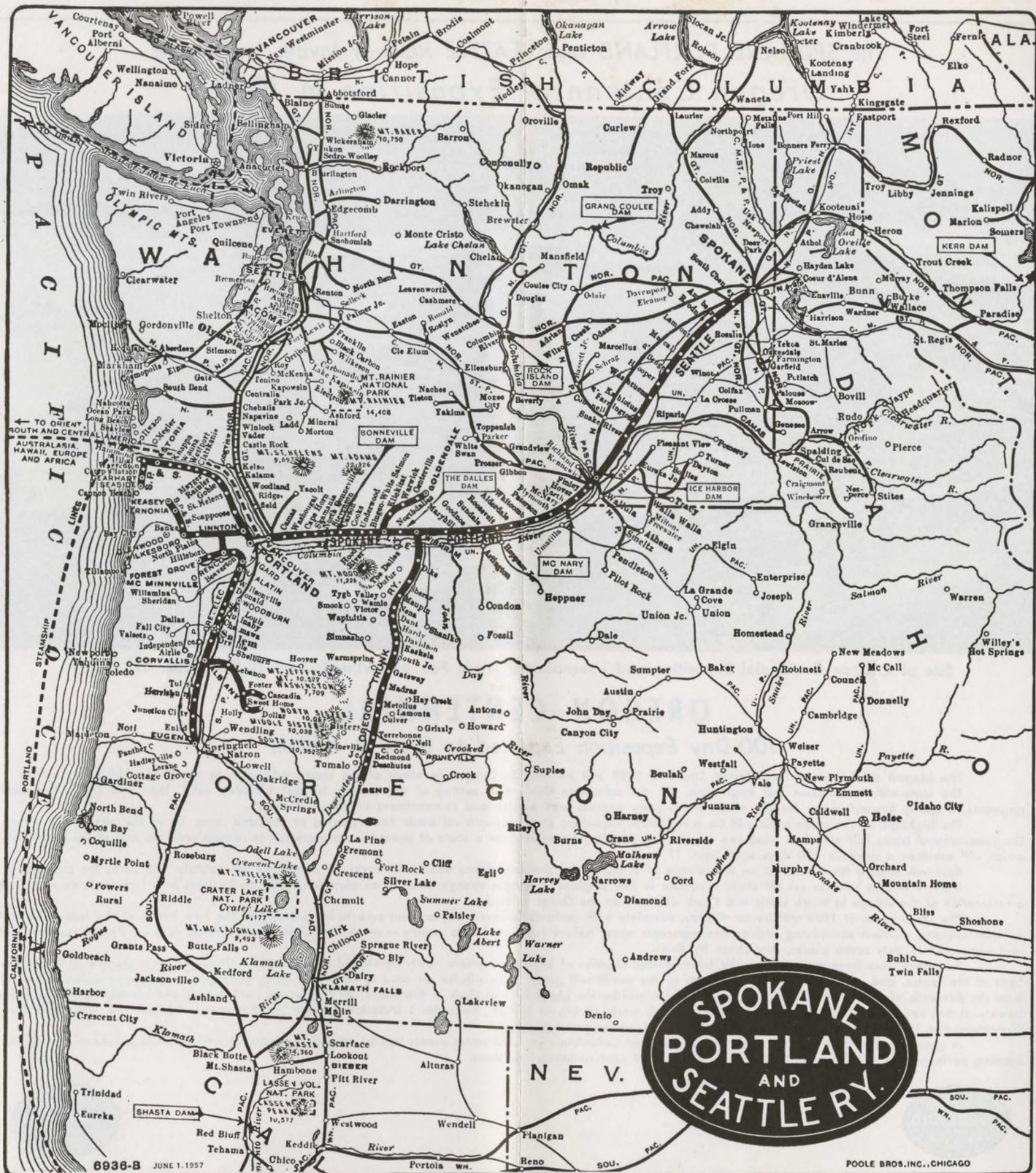
Amer. Bank Bldg., 621 S.W. Morrison St., Box 571, Portland 7, Oregon

JOHN M. BUDD.....	President	St. Paul 1, Minn.
R. S. MACFARLANE.....	Vice-President	St. Paul 1, Minn.
L. W. ALBERTSON.....	Vice-President	Portland, Oregon
N. S. WESTERGARD.....	General Manager	Portland, Oregon
GEO. F. EHLEN.....	Traffic Manager	Portland, Oregon
H. W. SHIELDS.....	Asst. Traffic Manager	Portland, Oregon
W. J. CROSBIE.....	General Passenger Agent.....	Portland, Oregon
E. H. BLOCK.....	General Freight Agent.....	Portland, Oregon
R. A. LAWRENCE.....	Gen. Industrial Agent.....	Portland, Oregon
C. S. JOHNSON.....	Asst. General Industrial Agent.....	Portland, Oregon
J. L. MONAHAN.....	Superintendent	Portland, Oregon
D. J. RITCHIE.....	Gen'l Supt. Motive Power.....	Vancouver, Wash.
H. F. MOY.....	Secretary and Chief Engineer.....	Portland, Oregon
T. L. PADDEN.....	Treasurer	Portland, Oregon
W. T. COWAN.....	Purchasing Agent	Portland, Oregon
C. E. BROEDER.....	Comptroller	Portland, Oregon
H. L. KENDALL.....	Auditor Disbursements	Portland, Oregon
F. G. BURGARD.....	Auditor Revenue Accounts.....	Portland, Oregon
L. F. LAWSON.....	Auditor Misl. Accounts.....	Portland, Oregon
G. C. GRAHAM.....	Auditor Machine Section.....	Portland, Oregon
W. J. SHEEHAN.....	Gen'l Claim Agent.....	Portland, Oregon
W. P. GARRETT.....	Right of Way and Tax Agent.....	Portland, Oregon
H. WENTZIEN.....	Superintendent Dining Cars.....	Portland, Oregon

Representatives

ALBANY, ORE.	J. E. ROWE (Phone Wabash 61546 or 61547)....	Ag't., O. E. Ry. Sta.
ASTORIA, ORE.	R. C. BAKER, 20th & Commercial (Phone 113) Ag't.	
BEND, ORE.	E. A. KOSKELA (Ev. 2-3911) Ag't. Passenger Sta.	
	G. A. SILK WORTH (Ev. 2-2901) General Agent	
EUGENE, ORE.	W. C. BODNO (Ph. DI 5-8757) Ag't., O.E.Ry.Sta.	
	W. Z. MYERS (Ph. Diamond 5-8759) General Ag't.	
	F. J. KIRCHHOFF...Traveling Frt. & Pass Agent	
HILLSBORO, ORE.	C. F. DUERR (Ph. 1944) Ag't., O.E.Ry.Frt.Depot	
JUNCTION CITY, ORE.	R. E. MILLER (Ph. M. 382) Ag't., O.E.Ry.Frt.Dep.	
LOS ANGELES 14, CALIF.		
	Great Northern Railway Room 317 510 West Sixth St., Ph. Madison 9-1473	
	C. V. PAULSON.....Traveling Passenger Agent	
	Northern Pacific Railway 510 West Sixth St., Phone Madison 7-2321	
	D. F. WALKER.....General Agent	
OAKLAND 12, CAL.		
	Great Northern Railway 807 Financial Center, Ph. Templebar 2-7672	
	C. G. ALEXANDER.....District Passenger Agent	
	Northern Pacific Railway.....611 First Western Bank Bldg.	
	Ph. Glencourt 1-8717	
PORTLAND 7, ORE.....	SPENCER A. JEWELL.....General Agent	
	M. L. THOMSON.....GAPD (SP&S-NP. Rys.)	
	439 S.W. 6th Ave., Telephone Capitol 2-1311	
	A. W. GUSEY.....GAPD (SP&S-GN. Rys.)	
	607 S.W. Washington St., Telephone CA 3-7273	
	F. M. SMITH, Ticket Ag't., Union Station, Foot of N.W. 6th Ave., Telephone Capitol 7-3421	
	T. J. MARTIN.....District Passenger Agent	
	H. F. ERZ.....General Agent, Freight Dept.	
	J. H. TAYLOR.....Trav. Frt. & Pass. Agent	
	J. W. JONES.....City Freight Agent	
	C. S. POWELL.....City Freight Agent	
	H. W. MILLER.....City Freight Agent	
	J. D. SURLES, Local Freight Agent, N. W. 11th and Hoyt, Phone Capitol 8-9111.	
REDMOND, ORE.	P. V. McMAHON (Phone 13) Ag't., Passenger Sta.	
SACRAMENTO 14, CAL.	R. L. LAMB, Gen. Ag't., G. N. Ry., 223 Forum Bldg.	
ST. HELENS, ORE.....	J. L. McGRAW (Phone 658) Ag't., S.P.&S. Station	
SALEM, ORE.	R. C. TETZLAFF (Ph. 3-3129) Ag't., O.E.Ry. Fr. Dep.	
SAN FRANCISCO 5, CAL.		
	Northern Pacific Railway 681 Market St.-Phone Sutter 1-1078	
	DANIEL TINNEY.....General Agent	
	Great Northern Railway 679 Market St. Phone Sutter 1-6051; 1-6052	
	A. L. SCOTT.....Ass't. Gen. Passenger Agent	
SEASIDE, ORE.	H. SWENSON (Ph. 45) Ag't., S.P.&S. Ry. Sta.	
SPOKANE 8, WASH.....	A. H. STUCKERT.....General Agent	
	D. W. MORRISON, Traveling Frt. & Pass. Ag't.	
	925 Old National Bank Building, Ph. Main 4238	
	RAY L. DUBOIS, General Agent, Passenger Dept., Davenport Hotel, Phone MA 4-5141	
	R. E. MATTHEWS, JR., District Passenger Agent, W. 221—First Avenue	
	B. B. McCANNON..Ticket Agent, Gt. Nor. Ry. Sta.	
VANCOUVER, WASH....	T. S. BRACE, Ag't. (Ph. Oxford 3-1491), SP&SR Sta.	
	C. M. WAGNER (Phone Oxford 4-5151) Pass. Sta.	

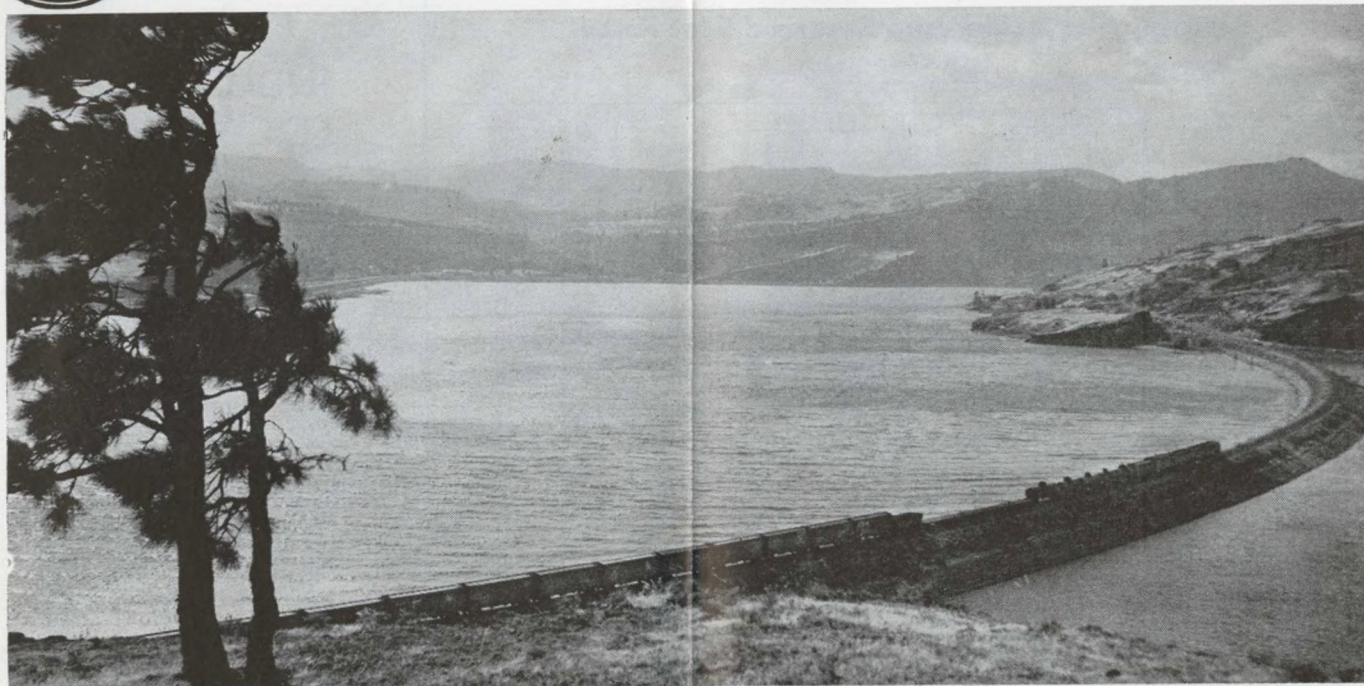
Agents of the Great Northern and Northern Pacific Rys. throughout the United States are the direct representatives of the Spokane, Portland and Seattle Railway Co., Oregon Trunk Railway and Oregon Electric Railway Co.



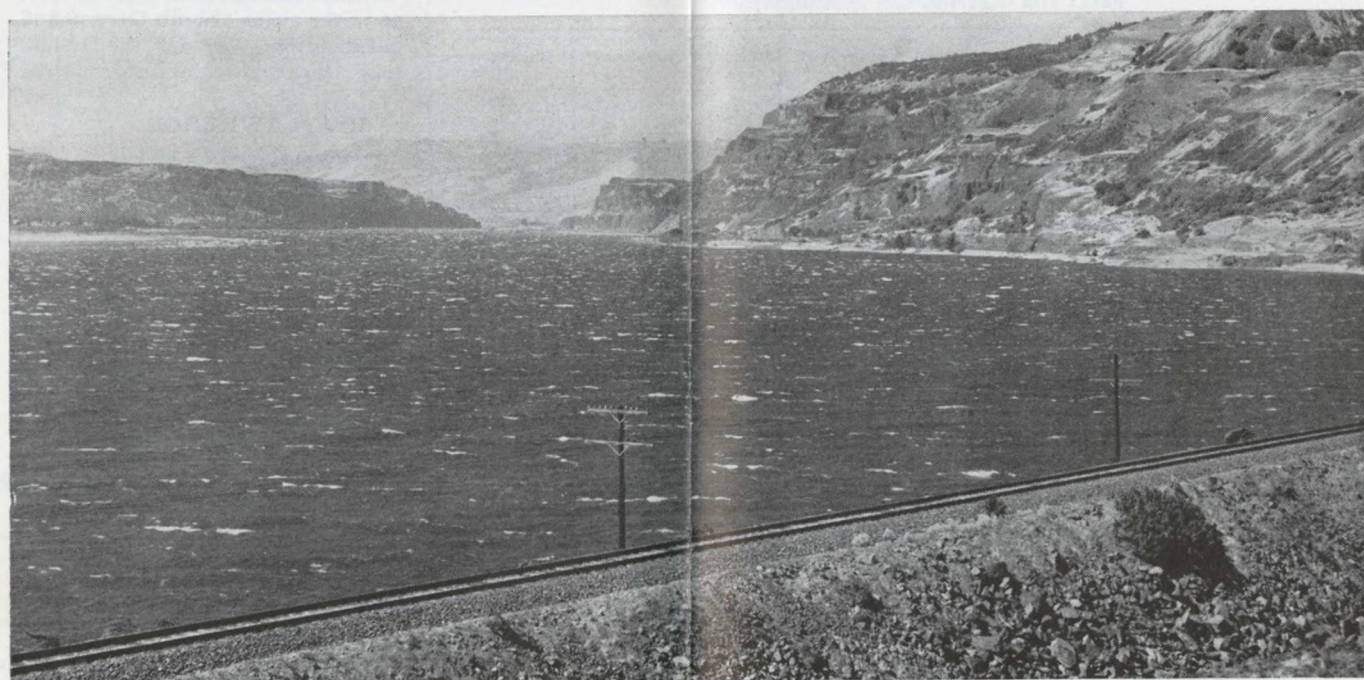


SPOKANE, PORTLAND AND SEATTLE RAILWAY SYSTEM

S. P. & S. RY. — OREGON TRUNK RY. — OREGON ELECTRIC RY. — (Subsidiaries of Northern Pacific and Great Northern Railways)



S. P. & S. Ry. Near Bingen-White Salmon, Washington



S. P. & S. Ry. Along The Columbia River Near Lyle, Washington

SPOKANE, PORTLAND AND SEATTLE RAILWAY SYSTEM

S. P. & S. RY. — OREGON TRUNK RY. — OREGON ELECTRIC RY. — (Subsidiaries of Northern Pacific and Great Northern Railways)



Oregon Trunk Ry. Near Moody, Oregon



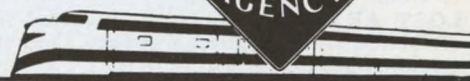
Your Choice of...Three Daily Trains

Between PORTLAND and SPOKANE

See Page 4 For Detailed Schedules

EASY way
to ship anything

Just phone Railway Express.
Prompt pick-up and fast
delivery within established
vehicle limits.



... safe, swift, sure



SPOKANE, PORTLAND AND SEATTLE RAILWAY SYSTEM

CONNECTIONS AT PORTLAND

S. P. & S. RY. - OREGON TRUNK RY. - OREGON ELECTRIC RY. - (Subsidiaries of Northern Pacific and Great Northern Railways)

PORTLAND - PUGET SOUND - BRITISH COLUMBIA

Northern Pacific Ry. - Great Northern Ry. - Union Pacific R. R.

Northbound—Read Down

G.N.	G.N.	N.P.	U.P.		G.N.	N.P.	U.P.	G.N.
401	459	407	457		460	408	458	402
Daily	Daily	Daily	Daily		Daily	Daily	Daily	Daily
11.45	1.30	5.25	9.00	Lv Portland, Un. Sta. Ar	12.30	4.30	9.15	6.05
12.11	1.49	5.44	9.21	Lv... Vancouver, Wn. Ar	12.08	4.08	8.51	5.30
12.52				Ar... Kalama... Lv	11.35			4.55
1.17	2.28	6.24	10.01	Ar... Kelso-Longview... Lv	11.24	3.24	8.04	4.38
1.32				Ar... Castle Rock... Lv	11.12			4.10
2.19	3.12	7.06	10.43	Ar... Chehalis... Lv	10.39	2.39	7.18	3.20
2.30	3.23	7.16	10.53	Ar... Centralia... Lv	10.32	2.32	7.11	3.00
	v 3.46	b 7.39	b 11.16	Ar... East Olympia... Lv	b 10.08	b 2.08	v 6.47	f 2.08
4.15	4.31	8.24	12.01	Ar... Tacoma... Lv	9.26	1.26	6.02	1.15
k 6.00	k 5.30	k 9.25	u 1.00	Ar... Seattle... Lv	k 8.30	k 12.30	u 5.00	k 11.45

Southbound—Read Up

358	362	360		357	359	361
8.05	6.25	2.00	Lv... Seattle... Ar	12.10	4.35	10.25
8.56	7.20	2.51	Lv... Everett... Lv	11.15	3.47	9.31
10.28	8.53	4.21	Lv... Bellingham... Lv	9.41	2.22	8.00
11.59	10.20	5.40	Ar... Vancouver, B.C. Ar	8.00	12.50	6.30

b To and from Olympia by bus k King Street Station
p Stops from Portland and beyond u Union Station
v No connecting bus service between East Olympia and Olympia.

CONNECTIONS AT SPOKANE AND PASCO

Bus Ex. Sun.	Bus Dly	Great Northern Ry.	Bus Dly	Bus Dly
2.20	9.20	Lv... Spokane... Ar	12.45	7.30
2.50	9.52	Ar... Deer Park... Ar	12.05	6.55
3.50	10.45	Ar... Chewelah... Ar	11.20	6.00
4.20	11.20	Ar... Colville... Lv	10.45	5.30
4.40	11.52	Ar... Kettle Falls... Lv	10.30	4.55
	12.43	Ar... Northport... Ar		4.10
	1.40	Ar... Trail, B.C. Lv		3.20
	4.25	Ar... Nelson... Lv		10.50

Great Northern Ry. Bend, Klamath Falls Bieber

(Freight Service Only)

Miles		SP&S 4	SP&S 2	SP&S 6	Northern Pacific Walla Walla	SP&S 3	SP&S 1	SP&S 5
0	Bend...	9.45	3.00	8.30	Lv... Portland... Ar	6.00	7.15	8.20
15	Lava Jet...	2.15	7.10	2.00	Ar... Pasco... Lv	1.05	2.55	2.50
32	La Pine...							
52	Crescent...							
68	Chemult...							
110	Chiloquin...	8.00	7.50	3.55	Lv... Pasco... Ar		10.25	1.15
133	Algoma...	8.20	8.10	4.15	Lv... Wallula... Ar		10.10	12.55
144	Klamath Falls...	9.05	8.50	5.00	Ar... Walla Walla... Lv		9.50	12.15
159	Merrill...							
210	Scarface...							
222	Lookout...							
234	Bieber...							

MARK YOUR BAGGAGE

All baggage, whether checked or carried with you, should be plainly marked with your name and permanent address. This will insure prompt recovery should it become lost or go astray. Remove all obsolete labels and addresses.

JEWELRY, CURRENCY, VALUABLE PAPERS and LIQUIDS should not be placed in baggage intended for checking. The railway will not assume responsibility for loss of, or damage to such articles.

4-311 Daily	NORTHERN PACIFIC	314-3 Daily
9.45	Lv... Portland... Ar	6.00
7.58	Ar... Spokane... Lv	8.50
8.45	Lv... Spokane... Ar	8.30
f 9.14	Ar... Spangle... Ar	f 8.02
f 9.35	Ar... Rosalia... Ar	f 7.41
f 9.51	Ar... Oakesdale... Ar	f 7.25
f 10.11	Ar... Garfield... Ar	f 7.05
10.31	Ar... Palouse... Ar	6.48
10.59	Ar... Pullman... Ar	6.22
11.18	Ar... Moscow... Ar	6.01
12.04	Ar... Kendrick... Ar	5.14
f 12.11	Ar... Juliaetta... Ar	f 5.07
12.45	Ar... Lewiston... Ar	4.30

SOUTHERN PACIFIC COMPANY

Southbound—Read Down

19	11	9		12	20	10
10.15	4.45	7.45	Lv... Portland... Ar	8.15	7.55	11.25
11.57	5.57	8.57	Ar... Salem... Lv	7.02	5.57	10.11
12.42	6.28	9.28	Ar... Albany... Lv	6.34	5.15	9.43
2.17	8.18	11.15	Ar... (a) Corvallis (a) Lv	10.35	4.30	10.20
1.35	7.08	10.09	Ar... Eugene... Lv	5.55	4.10	9.04
7.25	11.33	2.25	Ar... Klamath Falls... Lv	1.35	10.20	4.40
1.20	4.10	6.35	Ar... Redding... Lv	9.16	3.47	12.14
6.55	7.15	9.40	Ar... (a) Sacramento (a) Lv	5.50	8.35	9.00
6.15	7.30	9.57	Ar... Martinez... Lv	5.44	9.45	8.45
7.15	8.20	10.40	Ar... Oakland, 16th St. Lv	4.45	8.45	8.00
7.45	9.00	11.20	Ar... San Francisco... Lv	4.10	8.10	7.20
10.40	7.15	10.40	Ar... Los Angeles... Lv	6.40		6.20

a—via P G Lines Bus

EQUIPMENT OF TRAINS

Trains 9-10, Shasta Daylight—Streamlined Air Conditioned Train—Parlor Obs. Reclining Chair Cars between Portland and San Francisco. Coffee Shop service. All seats reserved.

Train 58 will take transfers from No. 9 at Martinez.

Train 57 will make transfer to No. 10 at Oakland 16th Street Station.

Train 11-12, Cascade—(Streamlined, Air Conditioned). Between Portland and San Francisco. Standard sleeping cars with drawing rooms, compartments, bedrooms, roomettes, lounge and dining car. Reserved seat chair car.

Train 19-20, Passenger—(Air Conditioned). Between Portland and San Francisco. Chair car only. No meal service.

SAN FRANCISCO - LOS ANGELES - COAST LINE

90	76	98	M		75	91	99
12.20	9.00	8.30	0	Lv... San Francisco... Ar	8.30	5.25	6.15
1.40	10.11	9.33	47	Ar... San Jose... Lv	7.13	4.15	5.20
9.07	3.08	1.38	248	Ar... San Luis Obispo... Lv	2.15	9.07	1.06
12.50	5.58	3.56	367	Ar... Santa Barbara... Lv	11.34	4.30	10.45
4.30	8.30	6.15	470	Ar... Los Angeles... Lv	9.00	1.00	8.30

SAN FRANCISCO - LOS ANGELES - VALLEY LINE

60	58	52	M		57	51	59
	9.00	6.50	0	Lv... San Francisco... Ar	8.30	7.05	
	9.35	7.30	4	Ar... Oakland Pier... Ar	7.13	6.25	
7.45		7.45		Lv... Sacramento... Ar		5.55	8.10
12.01	2.50	11.59	205	Lv... Fresno... Lv	2.30	2.00	4.10
2.20	5.15	2.03	313	Ar... Bakersfield... Lv	11.50	11.50	1.15
7.35	10.40	7.15	482	Ar... Los Angeles... Lv	6.20	6.40	7.35

Read Down

UNION PACIFIC RAILROAD

Read Up

18 Daily	106 Daily	12 Daily		17 Daily	105 Daily	11 Daily
9.30	5.00	8.00	Lv... Portland... Ar	5.30	7.30	7.30
10.54	f 6.18	9.39	Ar... Hood River... Lv	3.47	f 6.01	5.07
11.30	6.50	10.10	Ar... The Dalles... Lv	3.10	5.30	4.35
3.05	9.08	1.05	Ar... Pendleton... Lv	11.00	3.10	1.20
7.00	12.10	4.35	Ar... Baker... Lv	7.02	11.53	9.39
10.23		7.52	Ar... Payette... Lv	5.34		8.05
10.35		8.05	Ar... Ontario... Lv	5.24		7.56
11.35	4.05	8.55	Ar... Nampa... Lv	4.15	10.08	6.50
12.10	4.30	9.35	Ar... Boise... Lv	3.35	9.40	6.10
5.20	8.20	2.50	Ar... Pocatello... Lv	10.20	6.55	12.50
8.45		6.30	Ar... Ogden... Lv	6.40		8.50
10.05		8.20	Ar... Salt Lake... Lv	5.25		6.45
	6.35	5.50	Ar... Cheyenne... Lv		7.50	
		6.05	Ar... Denver... Lv	7.00		

Light face figures denote A.M. time.

Bold face figures denote P.M. time.

Ar. Arrive.

Lv. Leave.

f/Stop on Signal.

SPOKANE, PORTLAND AND SEATTLE RAILWAY SYSTEM

S. P. & S. RY. - OREGON TRUNK RY. - OREGON ELECTRIC RY. - (Subsidiaries of Northern Pacific and Great Northern Railways)



Sleeping, Parlor Car and Reserved Seat Fares

Federal Tax Extra

For information only. Subject to change without notice.

BETWEEN		PORTLAND		SPOKANE		BETWEEN		PORTLAND		SPOKANE	
AND	Parlor Car Seat	Lower Berth Standard	Lower Berth Standard	AND	Parlor Car Seat	Lower Berth Standard	Lower Berth Standard	AND	Parlor Car Seat	Lower Berth Standard	Lower Berth Standard
Billings.....Mont.		\$12.25	\$ 7.90	Minneapolis.....Minn.		\$20.80	\$17.70	New Orleans.....La.		29.05	26.80
Bingen-Wh. Salmon, Wn.			5.80	Missoula.....Mont.		8.70	5.80	New York.....N.Y.		33.20	29.50
Boston.....Mass.		33.20	29.50					Oakland.....Calif.		9.50	14.05
Bozeman.....Mont.		11.00	6.70					Omaha.....Neb.		20.80	17.70
Buffalo.....N.Y.		29.50	26.00					Pasco.....Wn.	2.35	5.80	5.80
Butte.....Mont.		9.95	5.80					Philadelphia.....Pa.		32.15	28.70
Camas.....Wn.			5.80					Pittsburgh.....Pa.		28.70	25.00
Chicago.....Ill.		24.20	20.80					Portland.....Ore.			5.80
Cincinnati.....Ohio		26.80	23.15					St. Louis.....Mo.		23.15	20.15
Cleveland.....Ohio		27.50	24.20					St. Paul.....Minn.		20.80	17.70
Denver.....Colo.		17.00	15.90					Sacramento.....Calif.		9.20	13.75
Detroit.....Mich.		26.80	23.15					San Francisco.....Calif.		9.50	14.05
Duluth.....Minn.		20.80	17.70					Seattle.....Wn.	① 1.60	5.80	5.80
Eugene.....Ore.	1.35	5.80	7.05					Spokane.....Wn.	2.95	5.80	
Fargo.....N.D.		18.85	14.70					Stevenson.....Wn.			5.80
Gardiner.....Mont.		11.75	7.55					Tacoma.....Wn.	① 1.20	5.80	5.80
Glacier Park.....Mont.		9.50	5.80					Vancouver.....Wn.			5.80
Great Falls.....Mont.		11.75	7.05					Washington.....D.C.		32.15	28.70
Havre.....Mont.		11.75	7.55					Wishram.....Wn.	1.20		5.80
Helena.....Mont.		9.95	5.80								
Kansas City.....Mo.											
(Via St. Paul, Minn.)											
Klamath Falls.....Ore.	3.05	5.80	9.50								
Livingston.....Mont.		11.45	7.05								
Los Angeles.....Calif.		13.75	13.10								
Louisville.....Ky.		26.80	23.15								
Lyle.....Wn.			5.80								

① Railroad Owned Cars.

RATES FOR SLEEPING CAR ACCOMMODATIONS

Where Standard Lower Berth Is	Upper Berth Is	Duplex Room-ette Is	ROOMETTE		Duplex Single Room		BEDROOM		Bedroom Suite	Compartment		Drawing Room	
			For One Person	For Two Persons	For One Person	For Two Persons	For One Person	For Two or More Persons		For One Person	For Two or More Persons	For One Person	For Two or More Persons
\$ 5.80	\$ 4.40	\$ 6.35	\$ 8.10	\$ 9.20	\$ 9.20	\$10.40	\$10.90	\$12.75	\$21.85	\$11.55	\$13.85	\$15.90	\$19.35
6.70	5.15	7.40	9.40	10.65	10.65	12.05	12.75	14.65	25.45	13.40	16.05	18.40	22.40
7.05	5.40	7.85	9.95	11.40	11.40	12.85	13.40	15.50	26.75	14.10	16.95	19.40	23.65
7.55	5.65	8.30	10.55	12.05	12.05	13.60	14.40	16.65	28.80	15.10	18.10	20.75	25.25
7.90	6.10	8.75	11.05	12.75	12.75	14.30	15.10	17.50	30.15	15.85	19.00	21.75	26.55
8.70	6.65	9.65	12.20	13.90	13.90	15.55	16.65	19.20	33.30	17.45	20.90	23.95	29.20
9.20	6.95	10.15	12.80	14.55	14.55	16.30	17.50	20.20	35.00	18.40	22.10	25.30	30.80
9.50	7.15	10.55	13.25	15.25	15.25	17.05	18.15	20.95	36.25	19.05	22.85	26.20	31.90
9.95	7.55	10.95	13.80	15.90	15.90	17.75	18.90	21.90	37.75	19.90	23.85	27.40	33.35
11.00	8.40	12.25	15.50	17.65	17.65	19.85	20.95	24.30	41.95	22.05	26.45	30.35	36.90
11.45	8.65	12.70	16.00	18.25	18.25	20.60	21.70	25.20	43.45	22.90	27.50	31.50	38.35
11.75	9.00	13.05	16.60	18.95	18.95	21.25	22.35	25.95	44.75	23.55	28.25	32.35	39.45
12.25	9.25	13.55	17.10	19.45	19.45	22.00	23.25	26.90	46.55	24.50	29.45	33.70	41.05
13.75	10.50	15.25	19.20	22.00	22.00	24.65	26.10	30.35	52.20	27.50	33.00	37.80	46.05
14.05	10.70	15.45	19.70	22.45	22.45	25.30	26.80	31.00	53.60	28.15	33.75	38.70	47.15
14.70	11.35	16.25	20.70	23.70	23.70	26.75	28.10	32.45	56.20	29.45	35.30	40.45	49.25
15.90	12.10	17.55	22.20	25.40	25.40	28.55	30.10	34.95	60.25	31.80	38.15	43.70	53.25
17.00	12.90	18.85	23.75	27.10	27.10	30.50	32.25	37.40	64.50	34.05	40.80	46.80	57.00
17.70	13.55	19.45	24.75	28.25	28.25	31.80	33.65	39.05	67.30	35.40	42.50	48.70	59.35
18.10	13.70	19.95	25.25	28.85	28.85	32.45	34.35	39.75	68.70	36.15	43.40	49.75	60.55
18.45	14.00	20.30	25.85	29.45	29.45	33.10	35.10	40.60	70.20	36.90	44.30	50.75	61.85
18.85	14.30	20.70	26.25	29.95	29.95	33.80	35.75	41.35	71.50	37.65	45.20	51.80	63.10
20.15	15.35	22.20	28.20	32.20	32.20	36.20	38.35	44.40	76.70	40.35	48.40	55.50	67.55
20.80	15.90	22.95	29.15	33.45	33.45	37.50	39.65	45.85	79.30	41.60	49.95	57.25	69.70
23.15	17.65	25.50	32.45	37.10	37.10	41.70	44.00	50.95	87.95	46.35	55.60	63.70	77.65
24.20	18.40	26.60	33.80	38.50	38.50	43.40	45.90	53.05	91.80	48.35	58.05	66.50	81.00
25.00	18.95	27.45	34.80	39.75	39.75	44.80	47.35	54.80	94.70	49.95	59.95	68.70	83.65
26.00	19.85	28.60	36.40	41.70	41.70	46.80	49.40	57.25	98.75	52.00	62.40	71.55	87.10
26.80	20.40	29.50	37.50	42.80	42.80	48.20	50.95	58.95	101.85	53.60	64.30	73.70	89.75
27.50	20.95	30.35	38.50	44.05	44.05	49.65	52.25	60.50	104.55	55.00	66.00	75.65	92.15
28.70	21.90	31.60	40.20	45.85	45.85	51.55	54.55	63.15	109.15	57.35	68.80	78.85	96.10
29.05	22.15	31.95	40.65	46.50	46.50	52.30	55.15	63.90	110.30	58.10	69.70	79.90	97.30
29.50	22.40	32.45	41.20	47.10	47.10	52.95	56.00	64.90	112.05	58.95	70.75	81.05	98.75
32.15	24.50	35.35	45.00	51.40	51.40	57.80	61.05	70.65	122.10	64.30	77.15	88.45	107.70
33.20	25.30	36.65	46.60	53.25	53.25	59.90	63.20	73.20	126.35	66.45	79.70	91.40	111.30

INDUSTRIAL LOCATIONS

National concerns continue to come to the Pacific Northwest and are choosing the Portland area as a location for their distribution warehouses. This is not only because of the tremendous growth in population but because of the strategic location for distribution throughout the Pacific Northwest, Alaska, the Hawaiian Islands, and the Orient. In addition, industries requiring lower power costs, better labor, or climatic working conditions, continue to locate throughout the area.

The SP&S RAILWAY SYSTEM owns and serves a great many industrial locations along the Columbia and Willamette Rivers as well as in the cities of both Oregon and Washington. Contact the Industrial Department for information.

R. A. LAWRENCE

General Industrial Agent

American Bank Building

P. O. Box 571

Portland 7, Oregon

Through sleeping cars not operated in all trains; fare applies for continuous trip via direct connections. A duplex roomette is a single private room with wash basin and toilet; a bedroom contains lower and upper berth, wardrobe and complete toilet facilities; a compartment is a private room with lower and upper berths, wash basin and toilet; a drawing room has a divan berth in addition.

Exclusive occupancy of a drawing room, two bedrooms en suite or a bedroom and compartment en suite requires 1 1/4 adult rail tickets, or their equivalent; for compartment, duplex-roomette, single or double bedroom, one adult ticket between S. P. & S. - N. P. - G. N. and connections; 1-1/10 tickets between certain other lines; for section, one adult ticket for each berth.

*The SPOKANE, PORTLAND and SEATTLE Railway Invites You to the
Oregon Centennial Exposition in 1959*



Site of Oregon Centennial Exposition and International Trade Fair at Portland, June 10-September 17, 1959.

OREGON CENTENNIAL

100-Day Exposition Expected to Draw 8 Million

The biggest celebration in the United States in 1959 will be held in Oregon in honor of the state's admission to the Union 100 years earlier.

The state-wide celebration will begin Feb. 14, the admission date, with cutting of the world's biggest birthday cake. Then will follow historical pageants, a spring housecleaning for the whole state, pony express mail service and re-enactment of historical events.

The highlight of the celebration will be a mammoth exposition and international trade fair opening at Portland June 10 at the site shown above. The international trade fair will close after two weeks, but exhibits from more than a score of countries are expected to remain until the end of the exposition, which will continue a symbolic 100 days until Sept. 17.

Research experts have forecast an attendance of 8 million for the exposition, which will cover 65 acres and use another 100 acres for parking.

Visitors will be able to set off chain reactions in two displays of atomic energy; ride on an elephant train; do business in a frontier town and view a restoration of the village in which Lewis and Clark wintered on the Oregon Coast.

The ideal home of 1969 will be on display, complete with gadgets seldom seen now but sure to be included in the new homes of the future. So will a forest industry pavilion embodying architectural concepts never before translated into reality—seven hyperbolic paraboloids, with a 24,000 square foot roof supported in only seven places, and there by 2x4's.

Ten acres have been set aside for the International Garden of Tomorrow, where newly-developed flowers will be displayed as a preview of the flower beds of the future, and native shrubs from all parts of the world will grow. Here will be an area of calm and quiet, providing a respite of quiet repose far from the demands of industry and business. In the garden will be the biggest floral clock in the world, 30 feet across, with hands and numbers made of living flowers. It will actually tell time, powered by electric clock works as big as a desk. Near the 1 o'clock mark will stand a candle 25 feet tall, which will burn throughout the 100 days of the exposition as a symbol of international good will.

A grandstand will be built on the bank of the cool Columbia river and water events will be staged in a natural setting, while ice shows and similar evening performances will be presented indoors in the 8000 seat centennial coliseum.

