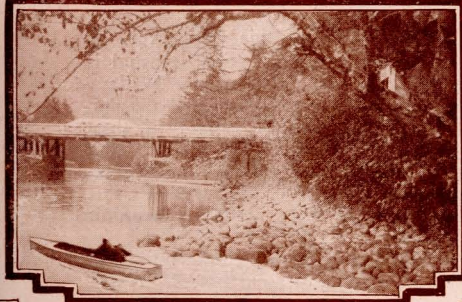


CLATSOP BEACH, PACIFIC OCEAN, A SHORT TRIP FROM PORTLAND

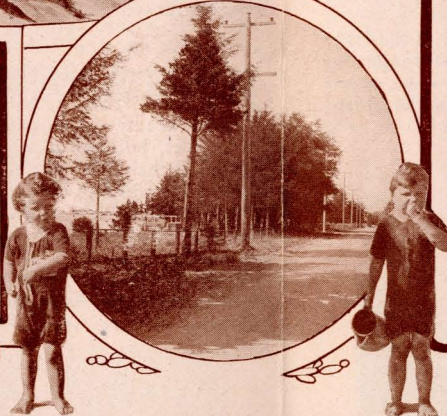


*Enjoying the
Ozone of the Sea*

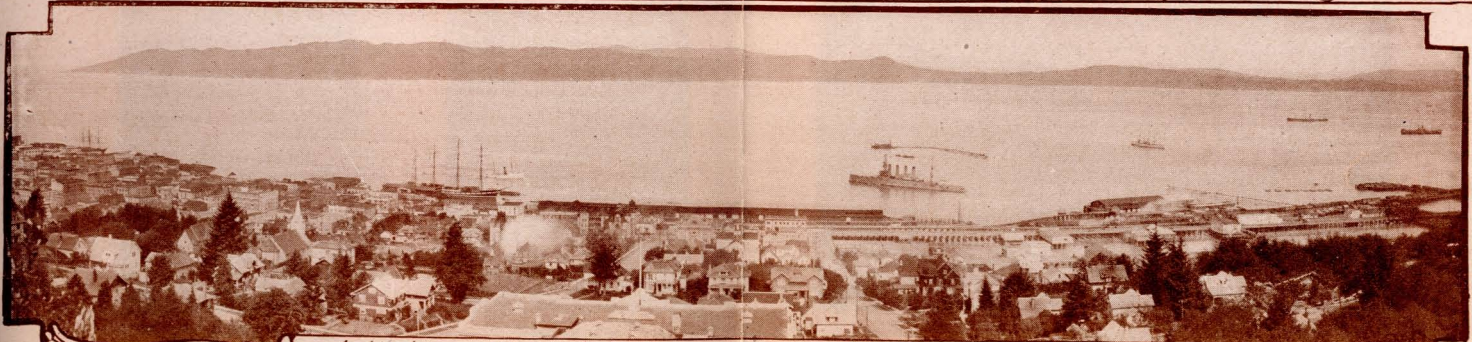
*Tillamook Head, Protecting
Promontory of Clatsop Beach*



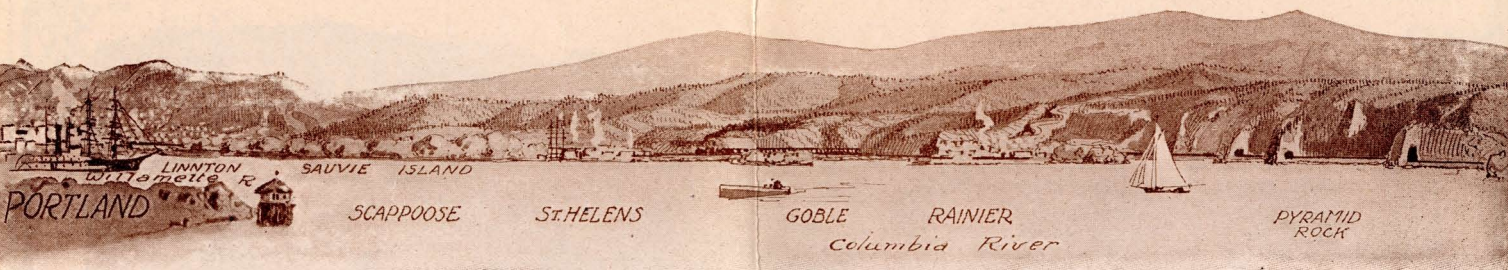
*Necanicum River,
Boating and Fishing Stream*



*Typical "Comfy" Cottages
in Beach Groves.*



Astoria— Oldest American City on the Pacific Coast.



PACIFIC NORTHWEST

Vacation Land

PEOPLE of every age and circumstance require the rest and recreation of the vacation time.

Nature has blessed the Pacific Northwest with rare and varied resorts and retreats—seashore, mountains, rivers, lakes and forests—unexcelled in all the land, offering selection to suit any wish. Some of these districts are described herein, principally by the camera.

Spokane to Portland

Columbia River—Cascade Mountains

THE trip from Spokane to Portland on limited trains of The North Bank Road gives the visitor splendid views of some of the choicest scenery in the Northwest.

Leaving Spokane the line passes onto a great plateau, skirts grain districts, small lakes, through rock cuts and tunnels to the rim of the walls of the Snake River Canyon, which it descends by easy grade to and crosses the great Columbia River at Pasco. The dominating browns and yellows in volcanic rock bespeak the geological origin of this region.

From Pasco to Vancouver, Wash., the north bank of the river is followed—hence the popular name of this line—through the very heart of the Cascade Mountains.

For many miles the chaste contours of snow-capped Mt. Hood (elevation 11,225 feet) are seen.



Columbia River and Cascade Mountains

The current of the river grows swifter as the shores narrow or the channel is cut by islands of rock; at Fallbridge are Celilo Falls, crossed by the bridge of the Oregon Trunk Railway, which leads to Central Oregon. The foot of the mountains reach the track itself along the river shore, and forests of pine and fir clothe their lower reaches. White Salmon, Carson and Stevenson are good stopover places for visits into the fishing and mountain resort districts. At these and other stations are splendid vantage points for viewing the wonderful mountain and river scenery. At the head of the White Salmon Valley stands Mt. Adams (elevation, 12,307 feet), a favorite Alpine climb. The railroad from Lyle or a splendid motor road from Maryhill leads over the heights to Goldendale, from which also Mt. Adams may be reached. Meritorious hot mineral springs are found at Carson. The mountain, health, river and fishing districts just mentioned may be reached also by trips from Portland.

Over the mountain cliffs on the Oregon shore drop numerous crystal cataracts, and for miles may be seen the threading line of the Columbia River Highway.

At Vancouver the railroad crosses again the Columbia River, then the Willamette, and follows the line of the lower harbor, past lumber mills and many other extensive industrial concerns on its double-tracked entrance to Portland.

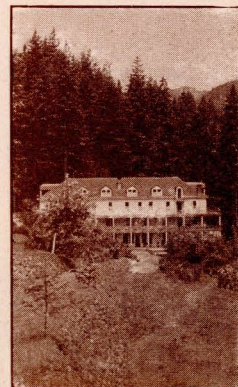
Portland

PORTLAND, OREGON, is the center of this wonderful out-of-doors land. It is a city of 260,000 population, unusual in the beauty of situation, lying on both sides of the Willamette River, builded upon easy slopes from the river and the surrounding heights, watched over by mountain ranges in three directions, while to the fourth lies the beautiful and fertile valley of the Willamette—all encompassed by the richness of evergreen forests. The climate of Portland is delightful; the summer's soft, temperate days, the cool nights, the air from ocean or mountain bring unfailing rest and refreshment.

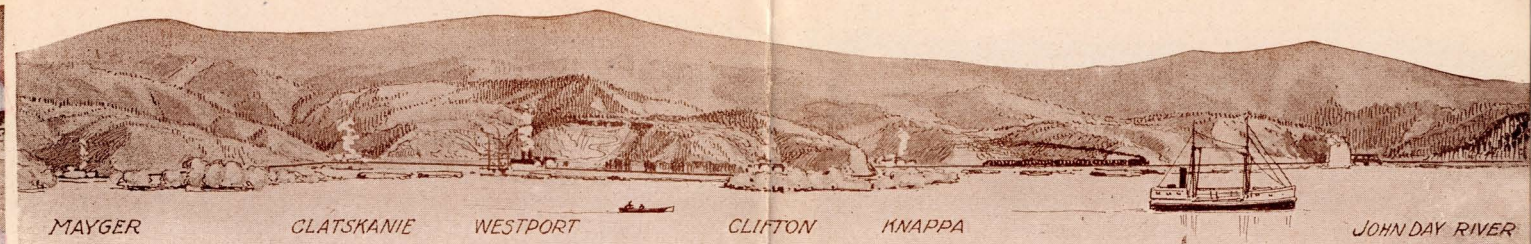
Portland has splendid hotels, homes, parks, public buildings, libraries, theatres, stores, bazaars and amusement places. A sys-



Mt. Adams



Hot Springs, Carson



tem of paved boulevards covering the city, surrounding districts of scenic advantage and the distant countryside affords visitors surprisingly delightful automobile trips, of constant and varying interest. The longest and most wonderfully constructed of these is the well-famed Columbia River Highway—leading from Portland eastward along the sheer cliffs of the Columbia River and into the heart of the Cascade Mountains. Indeed it reveals an amazing and changing panorama of snow-peaked mountains, Hood and Adams, the expanding waters of the Columbia, glacial-fed cataracts, forests of fir, pine, larch and cedar, and matchless effects of cloud and of the rising and setting sun.

The gardens and parks of Portland are filled with flowers of endless variety and of prodigal bloom. Here rose culture has reached such perfection and general favor that Portland is called the Rose City.

Along the Columbia River

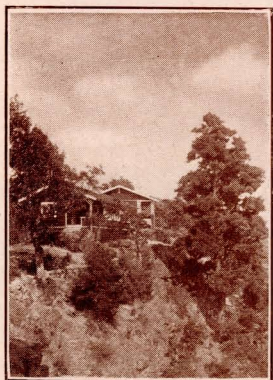
To Astoria and the Sea

IN ALL THIS LAND of interest no short trip gives the visitor so varying and complete a view of sweeping river, forest, mountain, ocean, lumbering and fishing as this. Something of its character is suggested by the running sketch at the top of these pages. A journey of one hundred miles in a fast train of The North Bank Road along the shores of the Willamette and Columbia Rivers gives the eye nature's true tints of a beautiful picture, rare in its composition, variety and extent.

Astoria

THE first American settlement on the Pacific Coast was at Astoria. In the City Park, occupying a site on the heights with a commanding outlook, is a replica of old Fort Astoria. The log stockade visualizes the setting of historic events portrayed in Irving's "Astoria."

Rising on the slopes above the Columbia River, the homes and public buildings overlook a vast panorama of mountain, forest, river and ocean.



Eyrie, White Salmon



Mt. Hood

Astoria's modern maritime importance is evidenced by the miles of busy waterfront, the shipping, docks, lumber and flouring mills, salmon canneries and other enterprises.

The city is the center of the salmon fishing and canning industries. The acres of net racks, the canneries and the fleets of fishing boats constitute a sight of unusual interest.

Following the extensive waterfront of the city, The North Bank Road crosses a long bridge over Young's Bay, and runs through meadows, fields of wild flowers and evergreen woods to Clatsop Beach on the Pacific Ocean.

Clatsop Beach

SOUTHWARD for twenty-five miles from the mouth of the Columbia River reach the smooth, surf-washed sands of Clatsop Beach, ending at the dominating, timbered heights of Tillamook Head.

Upon this vast natural veranda of the Pacific Ocean hotels, cottages, homes and camps abound. There are accommodations for all desires, from the first-class hotels and roomy cottages to modest boarding places and comfortably furnished tents.

Clatsop Beach is devoid of the barrenness sometimes associated with the seacoast. Here are rolling, grassy meadows and groves of evergreen trees, with a background of primitive forest reaching to the nearby mountain tops.

It is an all-year resort, for freezing weather is seldom known, and the ever refreshing and recreating influence of the soft salt air and music of the sea wave, in surroundings of unusual richness and beauty, entice lovers of nature and the weary



Portland and Mt. Hood



to this spot at all seasons. Spring and autumn are delightful. But the glory of the year is summer, when conditions here reach perfection, with azure sky, argent cloud, ocean's deep blue, salt breeze, soft days and cool nights inviting open fires, blankets and slumber. Clatsop Beach is supplied with pure spring water from the mountains. It is extremely healthful, and there are no mosquitoes or similar pests. Aside from the pleasures of bathing in the surf, lolling in the sands or tramping for miles the wave-beaten shore, visitors find that nature has been generous in furnishing many attractions for out-of-door life. Tillamook Head provides a good climb through forest of giant spruce, rewarded by grand views of ocean, mountain and timberland; mountain streams give fine fishing in season; tide-washed rivers invite canoeing or boating; trails to distant points through meadows and woods allure the pedestrian; and man has constructed splendid highways for automobile or horse.

At Gearhart an eighteen-hole golf course is laid upon rolling sweeps between ocean front and evergreen forest. Its natural situation is a real joy to lovers of this game. A salt water natorium is nearby.

Gearhart Park has enjoyed a fine growth in population from numbers of people who appreciate the delightful advantages of homes at the seashore, and have builded hundreds of cottages, large and small, facing the sea, or near the friendly spruce groves.

Seaside, a short distance south of Gearhart, is a city of several thousands during the summer season, and is open to visitors all the year. It is well equipped with modern improvements—

paved streets, light and water. It has numerous markets, stores, restaurants, hotels, boarding houses, cottages for rent, tents, natorium, theatres, etc. Crabs, clams and other sea foods are served as specialties on the tables of hotels and restaurants. A list of hotels is shown on another page, but special mention of the new Seaside Hotel is merited. It occupies the location of the former Hotel Moore, on the ocean front; provides accommodation for three hundred guests, and is designed and furnished to meet the requirements of the best resort patronage, and is open all year. It and other hotels, cottages, boarding and rooming houses, tent and camp facilities provide a range in accommodation and price to meet varying wishes or needs.

Cannon Beach

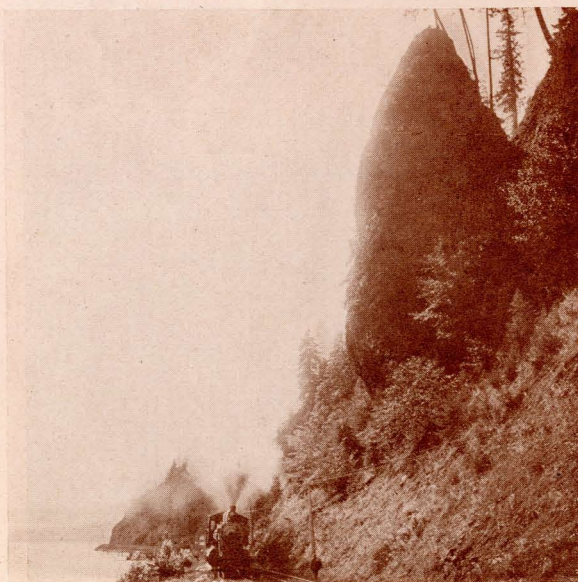
TEN MILES south of Seaside by a good road leading through splendid forest and over Tillamook Head is Elk Creek, beyond which for twelve miles stretch the wide, hard sands of Cannon Beach, a most beautiful combination of fantastic rocks, forests and ocean fronts.

Cragged headlands project into the breakers and a series of solitary, imposing pillars of rock lend a distinction not exceeded on the entire Western Coast. Resort homes, camps and hotels are found along this beach.

North Beach

On the Washington side of the Columbia River, extending northward, is North Beach. Its chief attraction is the beach itself. It faces the Pacific for twenty-five miles, and at low tide affords a boulevard the entire distance some four hundred feet wide of compact sand.

Little summer hamlets sheltered in pretty groves of spruce are strewn along the shore in goodly number, each provided with comfortable hotel, cottage and camp accommodations. The principal points are Seaview, Long Beach, Breakers and Ocean Park.



Pyramid Rock, West of Portland

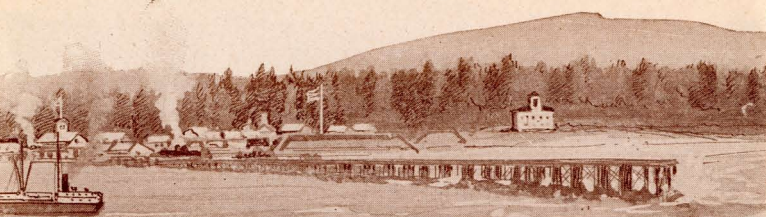


Golf Links, Gearhart



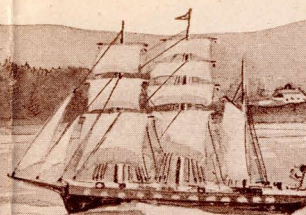
SEASIDE HOTEL

New Hotel.



HAMMOND

FORT STEVENS LIGHT HOUSE



COLUMBIA BEACH *Pacific*

North Beach is ideal for surf bathing. The descent is so gradual that bathers wade out a long distance before getting into deep water. At night the great delight is bonfires.

It is a great place for the pedestrian, who may take short or long walks to points of changing interest, including the ocean itself, the North Head promontory and Willapa Harbor.

Willamette Valley Trips

EXTENDING south of Portland for one hundred and thirty miles, between the Cascade and Coast Ranges of mountains lies the beautiful and fertile valley of the Willamette River. Its rich soil produces splendid crops of grains, grasses, hops, fruit, berries and garden stuffs. To the East rise snow-capped mountain peaks and to the West a rakish range separates it from the ocean. Throughout the valley itself and covering the mountains are forests of evergreen. Snow-fed streams and rivers water its lands, and provide rare sport for the fisherman. Its towns and cities are progressive and beautifully situated, with ample and comfortable accommodations for tourists and visitors. Salem is the capital of Oregon and the seat of Willamette University; Albany is the center of the Valley, Corvallis the seat of the Oregon Agricultural College, and Eugene of the University of Oregon, are all located on the Willamette River surrounded by productive agricultural and horticultural districts. Hillsboro and Forest Grove are within an hour's ride from Portland.

The best trout fishing is found adjacent to Eugene, and lodging accommodations are convenient to the waters.

The Oregon Electric Railway, climbing the hills which overlook Portland, traverses the length of the Willamette Valley, and its numerous trains of limited and local character furnish many delightful trips through this beautiful country.

Central Oregon

EAST of and separated from the Willamette Valley by the Cascade Mountains is a great plateau country which covers the center of Oregon. It is from 1,000 to 4,000 feet in

elevation. Its generally rolling surface is cut here and there by deep canyons, at the bottom of which flow crystal streams, and marked by the characteristic buttes which approach mountainous heights. To its west lies the Cascade Range, from which rise the snow-capped peaks of Mounts Adams, Hood, Jefferson, Washington, the Three Sisters and others. At their bases are deep, clear lakes, full of gamey trout of different varieties, and here also the hunter finds big game.

The Oregon Trunk Railway, leaving the Spokane, Portland & Seattle Railway at Fallbridge, serves this great district, and terminates at Bend.

For much of the way the railroad passes through the deep canyon of the Deschutes River, reputed to be the best stream for trout in the Northwest. It climbs the canyon walls to the plateau, traverses a stock, grain and hay section, crosses Crooked River canyon on one of the country's high bridges (320 feet), and enters the edge of a great belt of pine forest which reaches well to the top of the mountains. Besides the Deschutes, the Metolius and Crooked Rivers are meritoriously famed for splendid trout fishing, as are the mountain lakes, Paulina, Davis, Suttle and Odell, easily reached from Redmond and Bend, enterprising cities with comfortable accommodations for tourists; in particular the Pilot Butte Inn at Bend is attractive in situation, design, and appointments, which invite protracted visits.

Crater Lake is reached from Bend, over an interesting automobile road on which regular service is maintained during the summer.



Open all Year



Clatsop Beach Surf



North Beach Bathing

CLATSOP BEACH ocean

CLATSOP BEACH HOTELS

Place	Name	Season and Capacity	Day	Week
Seaside, Ore.	Seaside Hotel	All Year...300	\$6.00 up	American Plan
	Locksley Hall	" 40	\$3.00 "	\$16, Am. Plan
	Del Mar Apts	" 7	"	\$25.00
	Necanicum Inn	" 35	\$3.50	\$12.00 up
	Depot	" 45	\$2.00	"
	Rollins	" 20	\$2.00	"
	Broadway	" 35	\$1.50	"
	Colonial	" 80	\$2.00	"
	American	" 11	\$2.00	"
	Pacific View	" 26	\$2.00	"
	Beacon	" 27	\$2.00	"
	Natatorium Inn	" 15	\$2.00	"
	Kerwell	" 40	\$2.00	"
	Royal	" 16	\$2.00	"
	McGuire	" 40	\$0.50	\$ 5.00
	Andera	" 30	\$3.00	\$20.00
	Simpson	" 15	\$3.00	\$20.00
Gearhart, Ore.	Ocean View	Summer...30	\$3.00	\$15.00 "

CANNON BEACH HOTELS

Ecola, Ore....	Warren Hotel	All Year...30	\$3.50, \$4.50	\$25, Am. Plan
P. O.	Arch Cape	" 10	\$3.50	\$20, Am. Plan
	Cannon Beach	Summer 26	\$3.50	\$20, Am. Plan

NORTH BEACH HOTELS

Long Beach, Wn.....	Long Beach	All Year...75	\$3.00 up	Special
	Driftwood	" 75	\$3.00 "	"
	Harvest Home	" 40	\$2.00 "	"
OceanPk., Wn.	Taylor	" 50	\$2.50 "	"
Seaview, Wn.	Seaview	" 60	\$3.50 "	"

CASCADE MOUNTAIN HOTELS

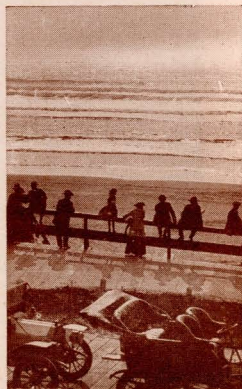
Carson, Wn..	Hot Springs Hotel..	All Year...*	\$5 \$4.00 up	\$25, Am. Plan
	Gov. Min. Springs..	June, Oct..*	35 \$2.50	\$20, Am. Plan
Foley Springs, Ore.....	Foley Hot Springs..	All Year...*	20 \$3.50	\$21, Am. Plan
Belknap Spgs. Ore.....	Belknap Lodge.....	June, Oct..*	18 \$2.00	\$12, Am. Plan
McKenzie Bridge, Ore.	McKenzie Br. Hotel	Apr.-Oct..	24 \$2.50	\$15, Am. Plan
Guler, Wn.....	Guler	All Year...	50 \$2.50	\$15, Am. Plan
White Salmon, Wn.....	"The Eyrie"	May-Oct...	35 \$7.00	\$42, Am. Plan
Vida, Ore....	Colburn	All Year...	25 \$1.00	European Plan
	Nimrod Hotel.....	All Year...	30 \$2.50	\$15, Am. Plan

*Star indicates number of rooms, otherwise number of guests.

For detailed information managers of hotels shown above may be addressed.



Deschutes River



Pacific Sunset

GEARHART

NECANICUM CA

SUMMER FARES TO CLATSOP BEACH AND NORTH BEACH POINTS

Round-trip fares from points shown below, and other stations in the Northwest will be in effect daily, May 27 to September 30, 1921, with return limit October 31. Stopover granted at any point.

WASHINGTON		Spokane	Hood River
Aberdeen	\$14.62	\$27.58	\$ 9.66
Centralia	11.52	14.34	22.74
Collfax	25.68	6.80	18.48
Davenport	30.92	19.98	Portland 6.00
Dayton	21.90	26.14	Redmond 19.45
Eureka	21.23	10.40	Salem 8.95
Goldendale	13.35	23.47	The Dalles 10.92
OREGON		IDAHO	
Kennewick	19.08	Albany	10.50
Lyle	10.95	Baker	25.74
Palouse	31.50	Bend	20.40
Pasco	19.35	Corvallis	11.10
Pullman	26.76	Eugene	13.10
Ritzville	24.01	Forest Grove	7.65
Seattle	16.66	Hillsboro	7.20
		Coeur d'Alene	29.44
		Grangeville	31.50
		Lewiston	26.35
		Moscow	27.30
		Stites	30.75
		Wallace	31.92

WEEK-END ROUND-TRIP FARES FROM PORTLAND

To Clatsop Beach Points and North Beach Points \$4.50

In effect Friday, Saturday and Sunday, May 27 to September 25, 1921, return limit following Monday.

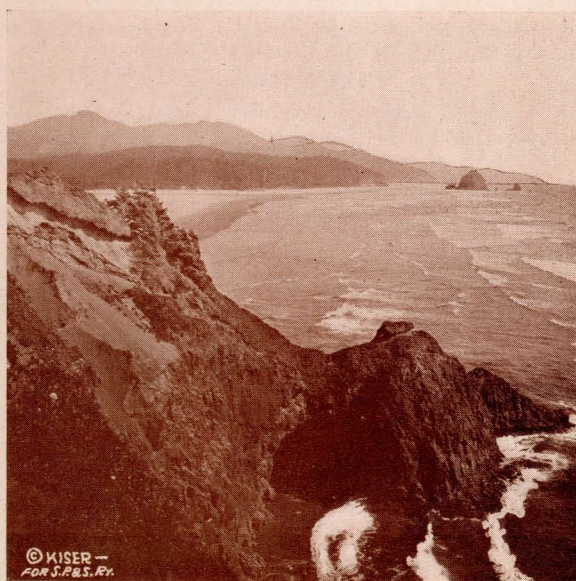
To Cascade Mountain Points:

Carson	\$2.82	Granddallies	\$4.56	Stevenson	\$2.64
Cascades	2.40	Hood	3.42	Underwood	3.48
Collins	3.00	Lyle	4.14	Wahclella	2.16
Cooks	3.18	Sepsecan	3.06	White Salmon	3.66

In effect Saturday and Sunday, May 28 to October 31, 1921, return limit following Monday. No stopovers. Add 8 per cent war tax to all fares.

TENT HOUSES AND CAMPS

At Seaside, Ore.—Nelson's Tent City, Hooper's Tent City, George Hill Tent City, Walker's Tent City and Rose City Tents at moderate rents. Furnished tents with floors, beds, wood, water, light, etc. Free camp grounds with water, light, etc., are provided by the city.



Cannon Beach



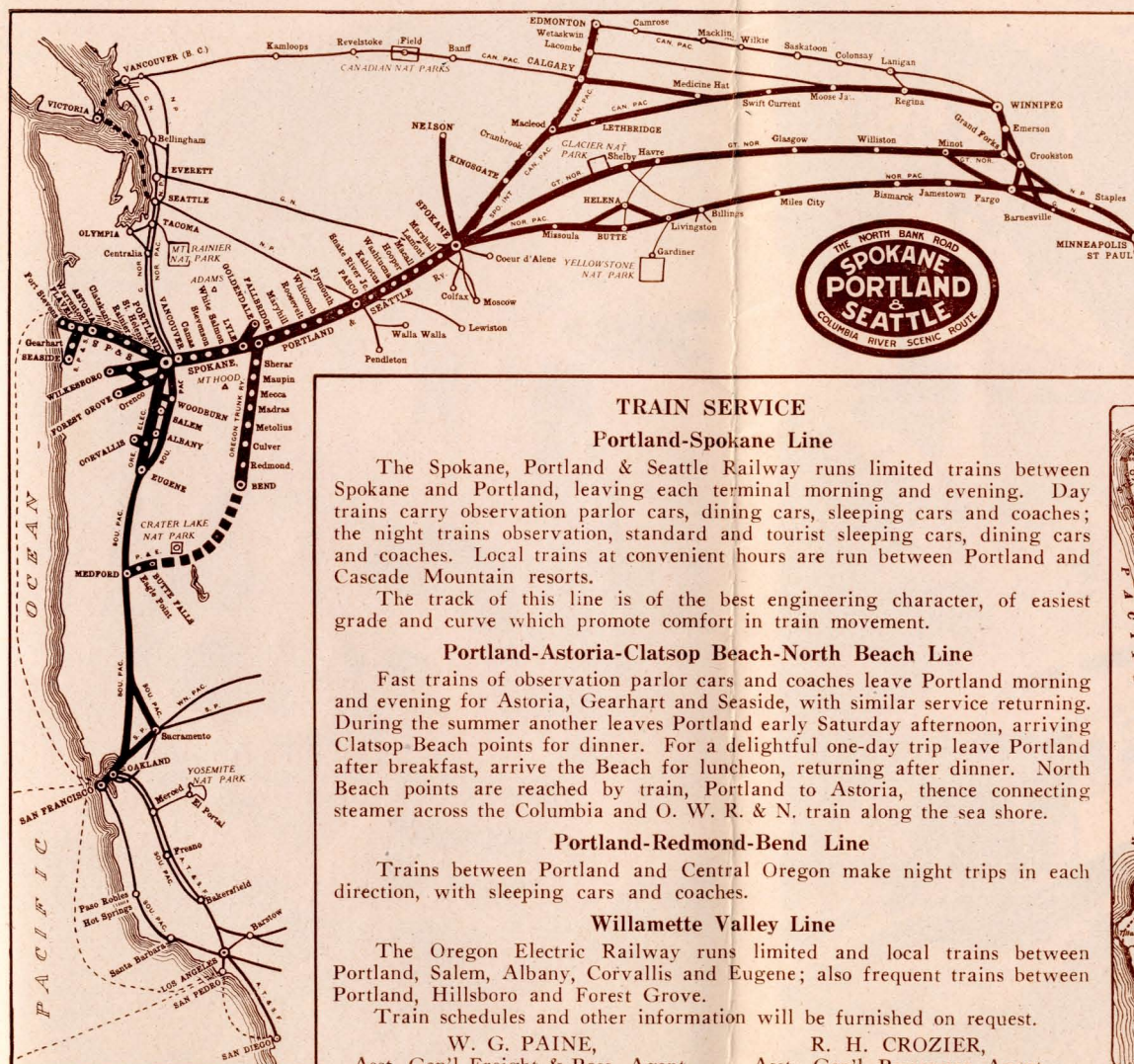
SEASIDE

HOLLADAY

Trail to Cannon Beach

TILLAMOOK HEAD

BALD MT



TRAIN SERVICE

Portland-Spokane Line

The Spokane, Portland & Seattle Railway runs limited trains between Spokane and Portland, leaving each terminal morning and evening. Day trains carry observation parlor cars, dining cars, sleeping cars and coaches; the night trains observation, standard and tourist sleeping cars, dining cars and coaches. Local trains at convenient hours are run between Portland and Cascade Mountain resorts.

The track of this line is of the best engineering character, of easiest grade and curve which promote comfort in train movement.

Portland-Astoria-Clatsop Beach-North Beach Line

Fast trains of observation parlor cars and coaches leave Portland morning and evening for Astoria, Gearhart and Seaside, with similar service returning. During the summer another leaves Portland early Saturday afternoon, arriving Clatsop Beach points for dinner. For a delightful one-day trip leave Portland after breakfast, arrive the Beach for luncheon, returning after dinner. North Beach points are reached by train, Portland to Astoria, thence connecting steamer across the Columbia and O. W. R. & N. train along the sea shore.

Portland-Redmond-Bend Line

Trains between Portland and Central Oregon make night trips in each direction, with sleeping cars and coaches.

Willamette Valley Line

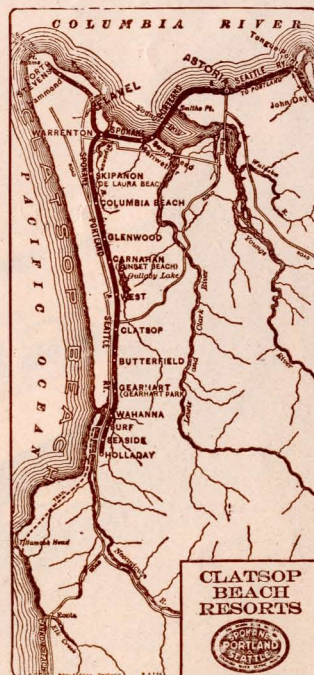
The Oregon Electric Railway runs limited and local trains between Portland, Salem, Albany, Corvallis and Eugene; also frequent trains between Portland, Hillsboro and Forest Grove.

Train schedules and other information will be furnished on request.

W. G. PAINE,
Asst. Gen'l Freight & Pass. Agent,
Spokane, Wash.

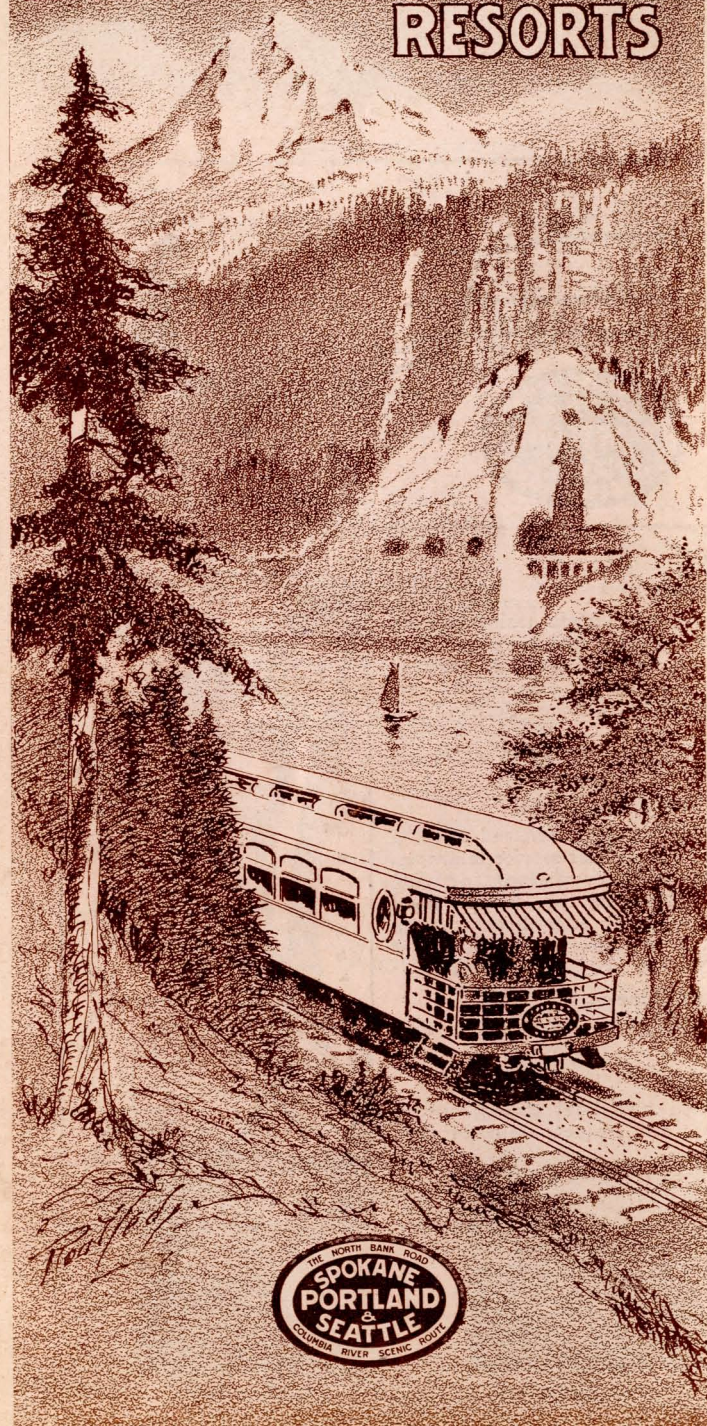
R. H. CROZIER,
Asst. Gen'l Passenger Agent,
Portland, Ore.

W. D. SKINNER,
Traffic Manager,
Portland, Ore.



MOUNTAINS

COLUMBIA RIVER RESORTS



CLATSOP BEACH

PACIFIC OCEAN OREGON

