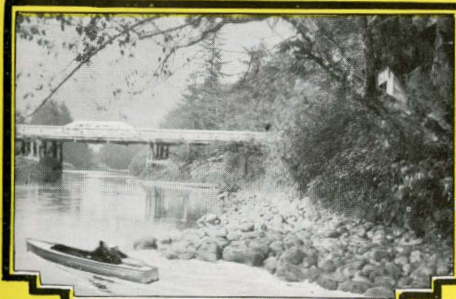


*Enjoying the
Ozone of the Sea*

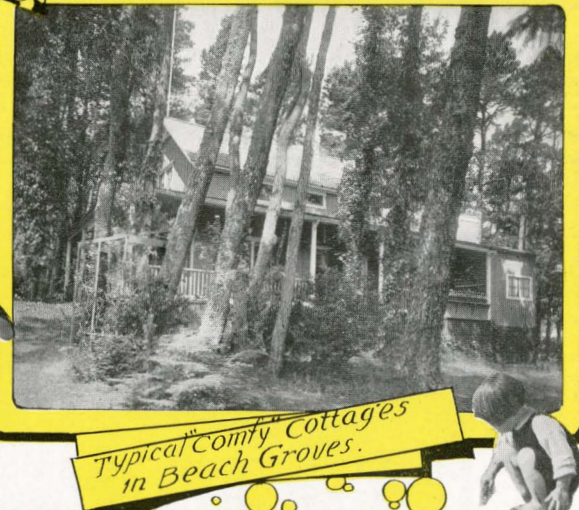
*Tillamook Head, Protecting
Promontory of Clatsop Beach*



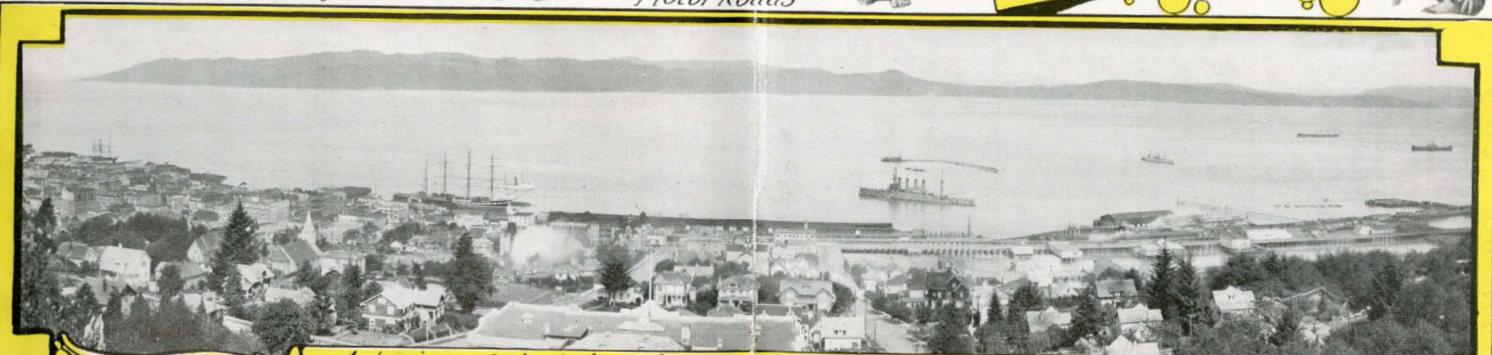
*Necanicum River,
Boating and Fishing Stream*



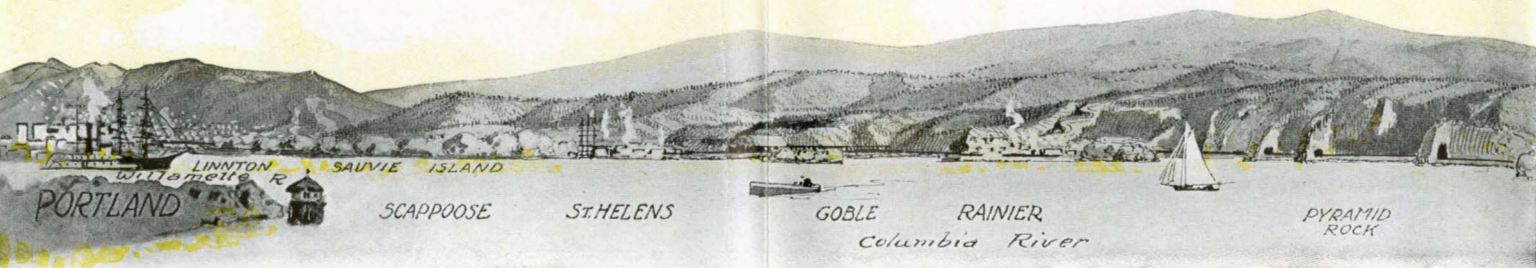
*Many Miles of
Motor Roads*



*Typical Comfy Cottages
in Beach Groves.*



Astoria— Oldest American City on the Pacific Coast.



A panoramic illustration is shown on the upper margin of these pages of the short trip from Portland to the Pacific Ocean which will convey a relative idea of the route of The North Bank Road to Clatsop Beach resorts, near the mouth of the Columbia River, and the features which appeal to vacationists.

Vacations by the Seashore

MEN of the mountains seek the sea; men of the lowlands seek the mountains. Thus is the eternal balance established and the vacation hours of the toil-worn made hours of true rest because they are so different. Clatsop Beach is the popular, all-year recreation resort for people of the Pacific Northwest and the inland and intermountain country. More and more the pleasures, advantages and natural charm of this premier resort are making themselves felt. Especially to the people of the inland and intermountain sections does an annual pilgrimage down to the ocean shore appeal. The change from torrid sun and brown-burned surroundings to the refreshing evergreen country west of the Cascades, and the buoyant airs of old ocean is like turning life's clock back a few years. Clatsop Beach is



The Kiddies' Playground.

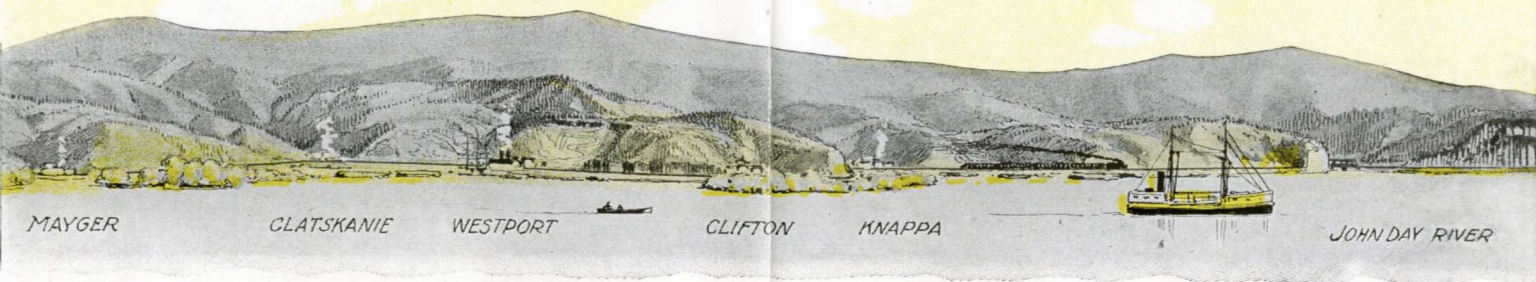
easily pre-eminent among the North Coast resorts because of its accessibility. For example, one may take a night train at a far inland point and have a sea-food luncheon next noon at any of the resorts. It is an attractive stopover point for travelers to or from California. For the Portlander and for those of many neighboring cities the short trip may be made at the end of a business day and the week-end train service of The North Bank Road is particularly convenient for week-end recreation. The summer season fares are very low from all Northwest points. The fares to North Beach points are the same as to Clatsop Beach, and persons going to North Beach resorts have the option of rail or steamer.

Portland, Pivotal Point

PORTLAND is a natural pivotal point for seashore and mountain outings. The brief suggestions herein, if followed, will add much to the pleasure of a vacation or sight-seeing trip. The recreational haunts of the seashore, the Cascade and Coast Mountains, the Willamette Valley, the lakes and rivers of Central Oregon, are quickest and easiest of access from this city. In point of time the Pacific Ocean is nearest to Portland of any of the larger cities of the Pacific Northwest. Nearly every eastern and inland visitor desires to see the ocean. As the Pacific is not seen at any of the principal Northwest cities tourists should bear this fact in mind when consulting agents for ticketing arrangements, as suggested on pages 17 and 27.

Portland possesses a most agreeable summer climate. The soft, temperate days, the cool nights, the breezes from ocean, rivers, the evergreen valleys and snow-capped mountains towering on the skyline of the Cascade Range composed scenes and atmosphere restful and refreshing.

One of America's most beautifully situated cities, Portland has all cosmopolitan features to satisfy the tourist. There are numerous splendid hotels, public buildings, apartments, clubs and a new Municipal Auditorium, the finest in the west, a feature of which is a great pipe organ. The social life of the city impresses the visitor; state societies and fraternities are well represented. Theaters, stores, shops, Oriental bazaars, grills and places of amusement rank with the best.



Accessible by street and interurban cars and automobiles are heights from which an expanding panorama of city, rivers, forests, valleys and snowy summits charm the eye. There are hundreds of miles of paved avenues, among them Terwilliger, Hillside, Fairmount and other scenic boulevards, in and around the city.

Trips by launch, motorboat and steamers on the Willamette and Columbia Rivers are intensely interesting and attractive.

The modern, parlor-car trains of the Oregon Electric Railway traverse the most attractive portions of the country and the cities of the Willamette Valley for 130 miles southward.

Columbia Highway, A King's Road

A superb boulevard through Nature's own art gallery is the Columbia River Highway, connected with the city boulevard system and reaching into the Cascade Mountains eastward a distance of sixty miles.

This highway is pronounced the most remarkable scenic road in America. It rivals some features of the famous highways of the old world. Its scenic beauties are quite distinctive, yet present in bewildering array, within a comparatively short distance, a stupendous spectacle of natural wonders—comparable with the Alps, the Rhine, the Hudson, the St. Lawrence and other scenic water courses.

Going east from Portland the road is paved forty-seven miles, has no grade greater than five per cent and pierces the gorge of the Columbia, heretofore inaccessible to vehicles. Passing through a most attractive suburban section over magnificent hard-surfaced highways, the beautiful Sandy River is crossed, and by a gradual ascent leads to the rim of the south portal of the Columbia gorge, a point where the precipitous mountain shores end and the open country begins. This point presents a grand tableaux of the gorge, a view extending fully thirty-five miles in either direction. This is called Crown Point Observatory, 25 miles from the city's center. This point towers above Rooster Rock, a familiar scenic beacon in the river and is 700 feet above the water. From this eminence the highway spirals downward by a series of loops, called the figure 8, into and

through a succession of natural wonders. By the roadside, so closely that the spray from cataracts touch the spectator, are a dozen beautiful water falls within almost an equal number of consecutive miles—Multnomah, Latourelle, Sheperd's Dell, Bridal Veil, Coopey, Dalton, Mist, Wahkeena, Benson, Horsetail, Oneonta and others. The falls are from fifty to seven hundred feet in height. Each possesses different characteristics, framed in the splendor that is given by varicolored cliffs, and richly verdured forest growth.

Further eastward there are St. Peter's Dome, Cathedral Rock, Bonneville, home of the largest salmon hatchery, and Mitchell's Point, which is penetrated by a tunnel 385 feet in length and containing five openings in the outer wall, fashioned like Gothic windows, looking riverward, at an elevation of one hundred feet above the river.

Every mile presents matchless combinations of color, shore and sky. The highway gracefully winds around and underneath overhanging pinnacle and crag, over deep chasms, spanned with artistic concrete bridges, around the face of sheer ledges, past numerous silvery streams, through forested growth and athwart narrow, deep cut canyons out of which sweep the fragrant breath of the everlasting mountains.



A Safe Beach for Surf Bathing.

TONGUE POINT

ASTORIA,

Columbia River

YOUNG'S BAY

SADDLE MT.

G.N.P.S.S.
FLAVEL

PORTLAND TO ASTORIA AND THE OCEAN

SPEEDING seaward from Portland on the comfortably equipped limited trains of The North Bank Road the south shore of the wide-spreading Columbia River is quickly reached and followed while the influence of the ocean air and tides become more pronounced mile after mile.

In the run of a little more than three hours are many scenes novel to the tourist—milling and logging operations, the river and ocean craft, the fishing villages and fleets of fishermen's boats and the vistas of forested coast ranges, clearly in view from the train. For miles, soon after leaving Portland, Mt. St. Helens dominates the skyline of the Cascade Range in Washington.

Passed on the way are St. Helens, home of important ship-building industries; Scappoose, rendezvous for game hunters of the frontiersman's time and which was settled contemporaneously with Hudson Bay trappers; Goble, a ferry transfer point for Puget Sound; Rainier, center of a prosperous lumber milling and farming country; Clatskanie, where important reclamation work of rich tidelands is in progress, and Kerry, Westport, Wauna, Knappa and other milling settlements.

The track follows the sheer shore, the stream gradually widening until the opposite shore becomes a hazy outline. The high, bold forested headland, Tongue Point, which partly encloses Astoria Bay on the east, is crossed at the narrowest point where it extends from the mainland. Along the harbor line and into the city of Astoria the train proceeds upon a long trestle.

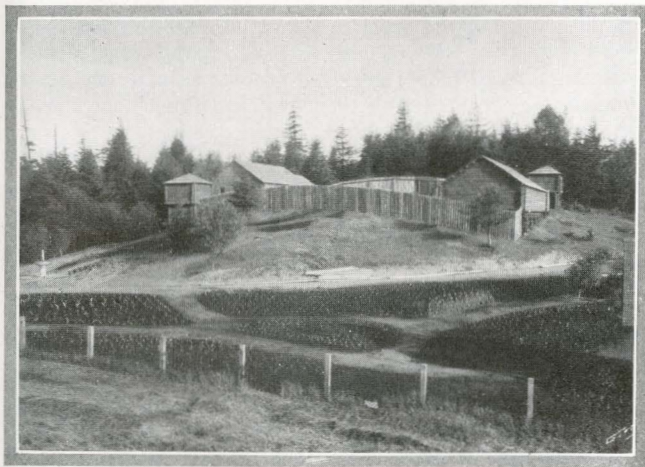
The first American settlement on the Pacific Coast was in Astoria. There are many interesting spots here that figured in history. In the City Park, occupying a site on the heights with a commanding outlook, is a replica of old Fort Astoria. The log stockade visualizes for the modern the setting of historic scenes that were grouped about Astoria in the beginning. The narrative of these events are portrayed in Irving's "Astoria."

Rising on the hill slopes above the Columbia River and the bay, the splendid homes and attractive public business buildings overlook a vast panorama of Young's Bay, Gray's River, Lewis and Clark River—named for the Jefferson exploring expedition of 1805—and the commingling waters of river and ocean to the westward.

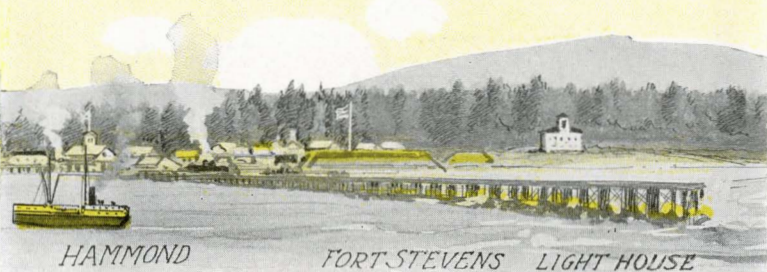
Astoria's modern day maritime importance is in evidence in the miles of busy waterfront, the shipping, the lumber mills, ship-building yards, salmon canneries and other industries.

The city is the center and headquarters of the salmon fishing and canning industries. Gill-netters, trap-wheel and seine fishermen of the Columbia River harvest a crop worth as much as \$7,000,000.00 annually. The acres of net racks, the canneries, the fleets of fishing boats in the season for fishing in the river constitute a sight unequalled for picturesque. It is well worth while to visit the canneries, or, better still, the seining grounds, reached by launch within a few minutes' run from city wharves. On the sand reefs in mid-river seining is conducted on a mighty scale. The nets are dragged from the river by teams of horses, containing hundreds of thirty to sixty-pound salmon, the king of all food fish.

Passing through the extensive waterfront of the city, The North Bank Road crosses a long bridge over Young's Bay. Warrenton is the first point of interest. This is the junction of the Fort Stevens branch. Within sight is the Flavel dock, the northern port of the California liners, the steamships "Great Northern" and "Northern Pacific."



Replica of Fort Astoria, City Park, Astoria.



HAMMOND

FORT STEVENS LIGHT HOUSE



Columbia River Bar

COLUMBIA BEACH Pacific

GEARHART AND SEASIDE, ON CLATSOP BEACH

CLATSOP BEACH extends from Fort Stevens southward from the mouth of the Columbia River to Tillamook Head, twenty-five miles of smooth, surf-washed hard-packed sand. Still further south of Tillamook Head is Cannon Beach, a twelve-mile stretch of ocean esplanade, with romantic surroundings every mile of the way, and within touch of the centers of beach life, Seaside and Gearhart Park, by a fifty-minute drive by auto over the highway that links the beach colonies together.

Upon this vast natural veranda of the Pacific Ocean hotels, cottages, homes and camps abound. There are accommodations for all desires, from the exclusive hotels to furnished tents at a dollar a day and up.

Oregon beach resorts are devoid of the barrenness sometimes associated with the seacoast. There are rolling, grassy meadows with a background of primitive forest. Dwellings are located within sheltering groves, along small streams, or faced upon the Necanicum River (a splendid course for rowing, motorboating and boat fishing) or fronting the ocean.

Summer cottages, tents and tent houses are equally the vogue with families that enjoy the change from conventional surroundings. The hotels, restaurants and boarding houses provide their guests with the comforts, accommodations and service of the city. A specialty is made of sea food—crabs, clams, mussels and cod, flounder and various other kinds of fish caught from the rocks or pleasure pier.

A factor of no small consequence is the pure, abundant supply of mountain spring water with which Gearhart Park and Seaside are supplied. The district is extremely healthful.

In summer the atmosphere is perfect. The evenings are cool enough to make a little fire cozy and enjoyable. Official reports show that the average summer temperature of Clatsop Beach is a few degrees lower than that of the Atlantic Coast.

For every season Clatsop Beach has its lures and devotees. Spring and summer naturally have delights for the greatest number. Many persons turn to it for their mid-winter vacations. Freezing weather is practically unknown. Out of door life is heartily enjoyed while the inland country shivers under biting winds and snow.

The Christmas, New Year, Easter-tide and other holidays of universal enjoyment and relaxation, are the rallying time for city-wearied folk who return for a period to recuperate

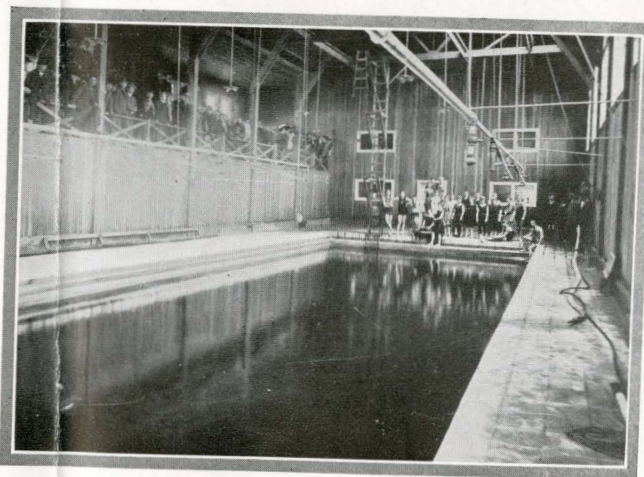
at hotel or cottage finding in the tang of the salt air the very tonic they require.

Furnished cottages, tents and tent-houses may be obtained at Gearhart Park and Seaside at all prices. Furnished apartments, with every modern convenience, are to be had at Seaside. Cottages of four to six rooms and upwards may be rented for the season at \$125 and upwards. Summer camp houses and tents range from \$6 per week upwards. Camping sites can be had for nominal rentals.

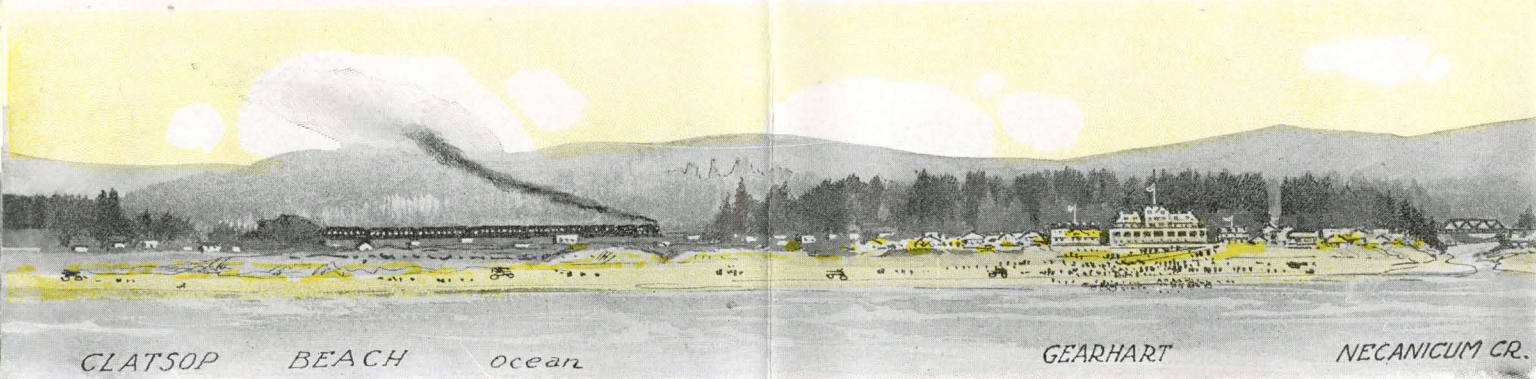
Gearhart Park

REACHED through a grove of stately spruce and fir trees, framing vistas of many pretty homes, a short distance from the railway station, is Gearhart Park. The Gearhart hotel, known far and wide among habitual visitors, was recently destroyed by fire. The surviving conveniences are the golf links and natatorium, which, with its heated sea-water is a delight for devotees of the plunge as well as a variation of the daily surf dip.

Meals and lodgings are to be had at cottages which offer comfortable accommodations. Owing to the limited number



Modern Natatoria at Seaside and Gearhart.



of these, it is well to arrange in advance for the accommodations desired.

Lodgings and meals may be obtained at the Lombard Cottage, and Tyberg rooming house.

The domestic water supply is the purest to be had. It comes from the mountains. Furnished cottages and houses and tent houses are to be had. The social environment is of the best.

Golf Links Overlook Ocean

THE golf links occupy a sweep of grassy knolls between the sea and the bordering forest growth. The course consists of eighteen holes and is in charge of a well-known instructor and an expert at the game. Championship matches are played off here every season and the grounds are favorite with many past masters at this game. It is not overlooked that there are many who would like to learn to play golf. An instructor is provided expressly for the purpose of encouraging the diffident ones in the fascinating pleasure as well as the science of this pastime.

The golfing course is suitable for use all season and the visitors in midwinter find it attractive. The sixth tee over-

looks the Pacific Ocean, Tillamook Head and the jetty at the mouth of the Columbia River and commands a panoramic view of Gearhart, Saddle Mountain and scenic surroundings.

Other pastimes, such as horseback riding, motoring, tennis, lawn bowling, canoeing on the streams Neacoxie and Necanicum, nightly bonfires and dances, fishing, walks by the surges or along the sheltered pathways of the woods, and numerous other social diversions cause time to pass swiftly and merrily.

Seaside

SEASIDE, three miles beyond Gearhart, has a normal population of several hundreds, but the influx of tourists, health-seekers and vacationists from May until September augments it by several thousands.

The residential sections have an outlook upon river or ocean, or spruce forests and are comprised of handsome bungalows and cottages, many of which are surrounded by yards of beautiful flowering shrubs, flowers and grass. The mountain-fed stream, Necanicum, forms a peninsula on which a large part of the community is located, and flows into the ocean between Gearhart and Seaside. Abundance of native trees provide shade and protection from seaward winds.

The Hotel Moore occupies attractively landscaped grounds directly facing the ocean. A pleasure pier extends into the surf and a promenade walk parallels the beach. The Moore has accommodations for two hundred and fifty guests.

In addition to the Hotel Moore there are a number of other hotels—Locksley Hall, the Torrey, Royal, Commercial, McGuire, American, Colonial, Rollins, Mears, and others, a list of which, with prices of accommodations, is found on page 29.

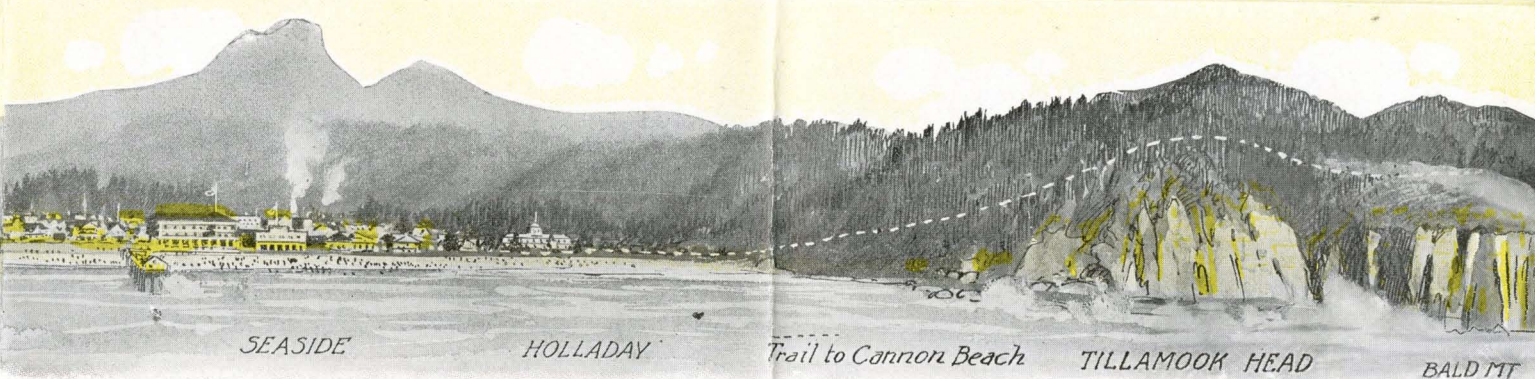
There are private boarding and rooming houses which offer a range of rates suited to the wants and purses of everyone.

There is a new \$35,000 natatorium, a skating rink, stores, markets, novelty shops and the usual amusements found at oceanside resorts.

Tents and tent-and-board houses which accommodate a small family may be rented with furnishings for as low as \$7 per week. Comfortably furnished cottages and houses may be rented for the season, or by the month, at reasonable prices, ranging from \$25 per month upwards. Furnished houses are customarily rented for the season of three months. See page 29.



Hotel and Natatorium, Seaside.



SEASIDE

HOLLADAY

Trail to Cannon Beach

TILLAMOOK HEAD

BALD MT

Cannon Beach

ANOTHER resort district lying south of Tillamook Head is known as Cannon Beach. This beach gained its name from the finding of a brass cannon of the earliest gunners' designs in the wreckage of an old galleon.

At the foot of the southern slopes of Tillamook Head are low-lying jagged surf rocks where almost any summer day, hundreds of sea lions may be watched basking on the ledges, playing and fighting. It is a very interesting sight if one will take a day for the jaunt to the proper observatory point on the Head.

A macadamized road leads from Seaside to Elk Creek. At Elk Creek begins a beach twelve miles in length with the grandest scenery that ocean and land can combine to make. The highway merges with the beach on a natural speedway of wave-tamped sand and ends at the rocky walls of Arch Cape as abruptly as it begins.

Cragged headlands project into the breakers and a series of solitary, imposing pillars of rock lend a distinction not exceeded on the entire Western Coast. Resort homes, camps and hotels are found along this beach.

Haystack Rock rises three hundred feet from the white-crested combers. Hug Point, Seal Rocks, Bird Rocks, Humbug Point and many other interesting points dot the broad strand.

The highway between Cannon Beach and Seaside and Gearhart is much frequented by autos, equestrians, tally-ho parties and pedestrians. The adjacent forests invite camping. The deep recesses of the woods yield game, and the streams fish. The Cannon Beach Hotel is at Elk Creek, Ecola Inn and Warren's Hotel, further down the beach, and the Arch Cape Hotel at Arch Cape. Ecola is the postoffice point for all these places.

Jaunts Afoot

ABENEFICIAL and popular form of diversion at the seashore is walking trips, or, as the soldiers say, "hiking." There are any number of interesting jaunts afoot, short or long. To those not familiar with the strength-building ozone of the sea it will be an agreeable surprise to find that they can indulge in a very unusual amount of exercise without fatigue.

The beach towards Fort Stevens and the Coast Life-Guard station, as well as southward along Cannon Beach, and the trails and paths through the adjacent forests, offer attractive variety.

From Seaside an interesting trail winds up to the summit of Tillamook Head, and from this outlook a wonderful view is had of Tillamook Rock lighthouse, the ocean, and far up the broad Columbia.

The harder devotees of mountain climbing will be drawn toward Saddle Mountain, a culminating peak of the Coast range. Climbers' clubs designate it as the "biggest little mountain" in Oregon. It rises in sheer precipice to 3316 feet and the trail is steep enough to challenge the prowess of the most ambitious alpinist. The view from the summit is well worth the climb. There is a good road to Marxen's, four miles from the mountain. From Marxen's there is a good trail kept in condition by the Astoria Saddle Mountain Club. There is fishing and hunting along the route. Several hundred people make this trip every summer.

What amateur anglers consider one of the best of trail trips—and it has features that appeal to others—is the upper Lewis and Clark river. The trail leads from Wahanna station eastward, first following the road to Thompson's Falls.



Salmon Seining Near Astoria.



There it winds up the hill and drops over just below the first dam. On the east bank of the river is a fair path. Abandoned cabins here make an excellent temporary camping place.

A hiking trip down the beach to Reed's Tavern, on Neah-Kah-Nie Mountain, on the Nehalem River is, and has been, in vogue for many seasons.

The hiking parties may start from Gearhart or Seaside and follow the splendid highway through the magnificent forest back of Tillamook Head to Elk Creek, or Ecola, and thence down the wonderful Cannon Beach to Arch Cape (which can be passed only at low tide) then along Mowitza Beach and from this place the narrow trail takes to the declivitous shore line and the edge of the primeval forest.

There are two trails, one a rugged course almost constantly giving an outlook upon the ocean, and the other winding through the forest. It is a leisurely jaunt of one

day and is taken by men, women and children. The ocean-side trail, near the Nehalem river, winds around the sheer flanks of Neah-Kah-Nie Mountain, overlooking a wild surf, a thousand feet below. The grandeur of this view makes a lasting impression. For all who love mild adventure, the combination of open sea, rugged heights, and wooded wilds, this tramp may excel other charms of this section. Summer after summer, since the trails have been kept open, the number of people that take this trip have been increasing; many, indeed, spending days meandering en route, and camping out with a light kit. Mussels on the surf rocks at many points, crabs and surf fish, also trout in the brooks, supplement the camp commissary.

Trout streams and game are found in the forests along the way. Sea foods are served at the hotels. Reed's Tavern is a romantic place and one always is inclined to prolong the stay here.

HOW TO GO TO CLATSOP BEACH

DURING the summer limited trains of observation-parlor cars and modern coaches leave Portland daily at a convenient morning hour, arrive Astoria and Clatsop Beach points for luncheon, and return to Portland

after the dinner hour. For week-end visitors, the Week-End Special leaves Portland after luncheon Saturday, reaches beach points before dinner, and returns Monday morning. Throughout the year trains similarly equipped are run between Portland and these points.

For the accommodation of patrons of North Beach resorts (on the Washington shore) connection is made at Astoria with boats for Megler, and through tickets to any of the North Beach resorts are sold by agents of this Company and agents of other lines throughout the Northwest.

From points in the Willamette Valley the fast, frequent trains of the Oregon Electric Railway connect with North Bank trains in The North Bank Station, Portland, and make it convenient for season and week-end trips to Clatsop Beach. Tickets should read via Oregon Electric to Portland; from points in Central Oregon tickets should read via Oregon Trunk Railway, and thence Spokane, Portland & Seattle Railway in both directions.

From Puget Sound points tickets should read via Great Northern or Northern Pacific Railway to Portland, thence Spokane, Portland & Seattle Railway in both directions.

From Montana points excursion tickets to Clatsop Beach points may read in both directions via Spokane and the



A Clambake on the Pacific's Shore.

ECOLA PO

HAYSTACK ROCK

WARREN'S

Spokane, Portland & Seattle Railway, or in one direction via this line and via Puget Sound in the other. From points in Eastern Washington and Northern Idaho routings are via Spokane or Pasco and the Spokane, Portland & Seattle Railway in both directions.

From California, tourist tickets should read via Great Northern Pacific S. S. Co. and Spokane, Portland & Seattle Railway. Travelers to or from California may enjoy a stop-over at Clatsop Beach within the limits of tickets by presenting them to the agent of The North Bank Road at Astoria or Portland and making payment of thirty-five cents for a ten-day round-trip ticket from Astoria to Seaside or Gearhart.

For those who are interested in California tours a special publication has been prepared. It is illustrative and descriptive of the 26-hour ocean sail on the twin palaces, the steamships Great Northern and Northern Pacific, between the Golden Gate and Astoria-Flavel. This publication will be sent upon request to representatives named on page 30.

The round trip fares from the Middle West are the same to Astoria as to Portland, Seattle and other Pacific Northwest cities.

Make Astoria the destination of your ticket at time of purchase and upon presentation of the ticket to the agent

of The North Bank Road at Portland or Astoria a free round-trip ticket will be issued to Gearhart or Seaside.

Fares From Nearby Points

Oregon—Albany, \$6.10; Corvallis, \$6.50; Eugene, \$7.80; Forest Grove, \$4.00; Harrisburg, \$7.15; Hillsboro, \$3.80; Junction City, \$7.30; Portland, \$3.00; Salem, \$5.00; Woodburn, \$4.50.

Washington—Camas, \$4.00; Goldendale, \$8.05; Granddallies, \$6.75; Lyle, \$6.40; Maryhill, \$7.55; Stevenson, \$5.15; Underwood, \$5.95; Vancouver, \$3.60; Washougal, \$4.10; White Salmon, \$6.00.

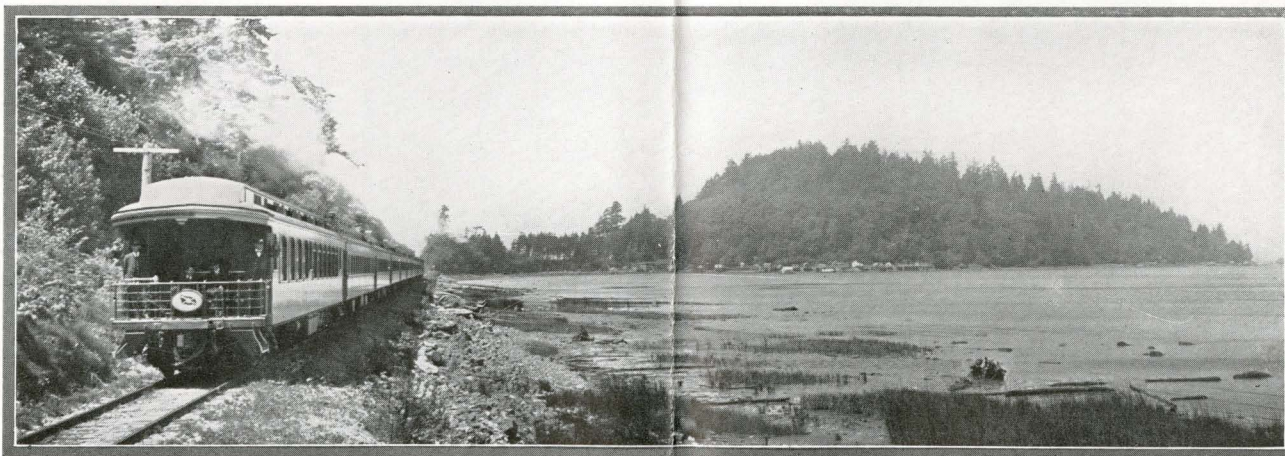
The tickets above named are on sale Saturday and Sunday, return limit Monday following. No stop-overs are permitted. These fares are in effect throughout the year.

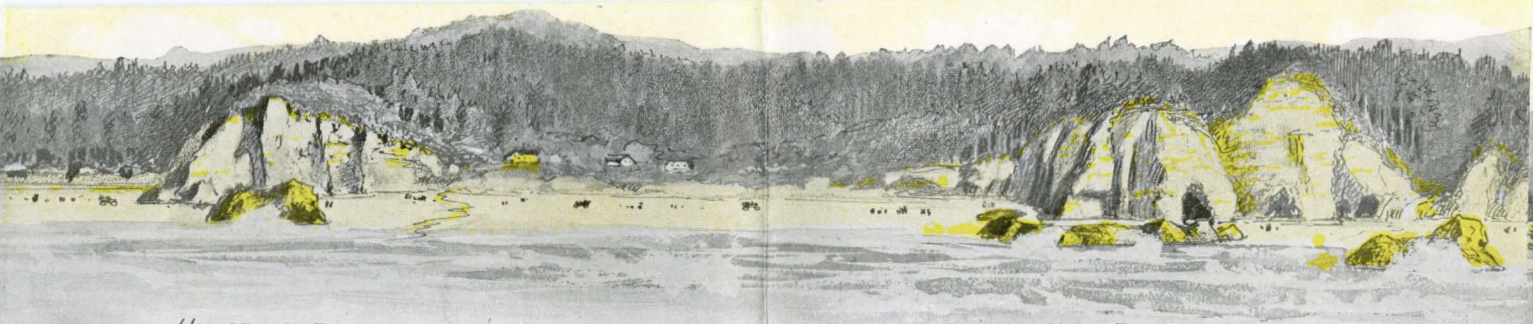
\$4.00—Tickets from Portland on sale daily, return limit six months. Stop-overs are permitted at and west of Astoria on tickets to Clatsop Beach.

\$3.00—Tickets on sale Saturday and Sunday, return limit Monday following. No stop-overs allowed.

\$15.00—Five round trips to Clatsop Beach points from Portland, on sale daily, limited to one year, good only for purchaser and no stop-overs allowed. All these fares are in effect throughout the year.

Summer season fares from Northwest points are shown on page 28.





HUMBUG POINT

HUG POINT

MINERAL SPRINGS AND OTHER RESORTS IN CASCADE MOUNTAINS

MT. ADAMS, 12,307 feet in height, ranks third among the great snow peaks of the Pacific Northwest country and is very accessible. White Salmon, Wash., from which point alpine parties start for the trip for the ascent of this mountain, is two and one-quarter hours from Portland. Near the foot of the mountain is Trout Lake village, where guides and outfits may be obtained and hotel accommodations found. Auto stages make the trip from the railroad station at White Salmon to Trout Lake in three hours. Some of the most remarkable glaciers in the United States are found here, also lava and ice caves. Mt. Hood is reached from Portland by rail or auto.

In the Columbia River country and in the Cascade Mountains are numerous health, pleasure and fishing resorts. Trout fishermen and campers frequent many places along The North Bank Road, by short trips from Portland, for outings

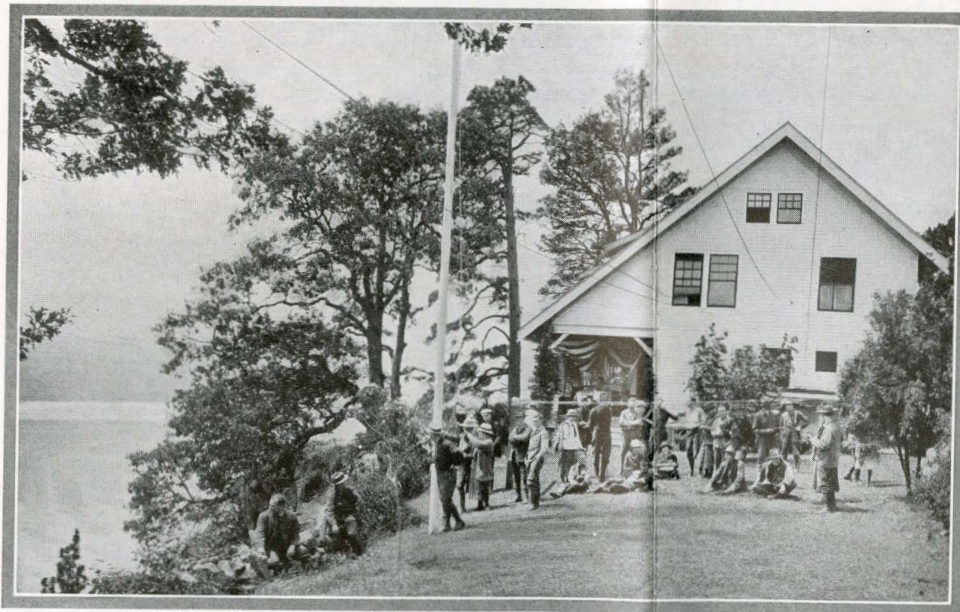
of a day, a week-end or longer—the Washougal River near Cape Horn or Washougal, the lakes near Cascades, Hamilton and Rock Creeks near Rand, Wind River at Carson, Little White Salmon River at Crooks, White Salmon River at Underwood or White Salmon, and Klickitat River at Lyle, Klickitat, Maddocks, or Goldendale. The Klickitat Springs at Klickitat are cold mineral waters of curative properties.

Shipherd's Mineral Hot Springs, at Carson, is a well known resort whose medicinal waters have a splendid curative effect upon many ailments. The temperature is 117 degrees Fahrenheit. The analysis of this water shows the following: Silica .51, calcium carbonate 14.03, magnesium carbonate 28.14, magnesium chloride 12.01, sodium 16.07, sodium sulphate 21.73, potassium chloride 7.01, total 99.50.

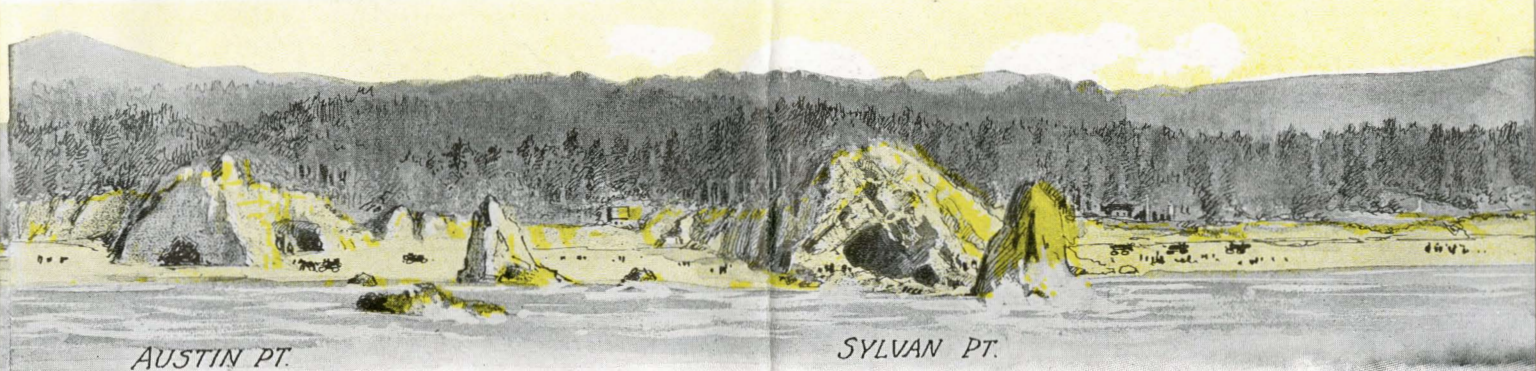
The St. Martin's Springs are nearby.

Government Mineral Springs are situated sixteen miles

from Carson, Wash., and regular auto service is provided between the springs and Carson station. The springs are situated on Trapper Creek, a fork of Wind River, in the heart of the Columbia National Forest Reserve, surrounded by two billion feet of large fir and cedar. One hundred miles of standard government trails lead through the dense shady forest in which are good fishing streams, high waterfalls and extinct craters. The elevation at the springs is 1365 feet. From the springs one can go by a good trail to Observation Peak, an elevation of 5000 feet. From this point seven snow-capped mountains can be counted. One can get as far from civ-



Outing Party at "The Eyrie," White Salmon.



AUSTIN PT.

SYLVAN PT.

ilization by going sixteen miles from Carson to the springs as can be found anywhere on the Pacific Coast and have telephone connection with the outside world.

Analysis of the water, in parts per million, shows the following: Lithium chloride, trace; potassium sulphate, 49.9; sodium chloride, 737.7; sodium silicate, 87.7; calcium sulphate, 380.3; calcium bicarbonate, 582.6; iron and aluminum oxide, 32; magnesium sulphate, trace; calcium phosphate, trace; free ammonia, .50; albuminid ammonia .16; total solids, 1870.

At White Salmon, Wash., are resort inns—The Eyrie and Jewett's Farm Home—commanding unsurpassed views of mountain, gorge, valley and river scenery, offering home-like accommodations and mountain water and air.

Central Oregon

THE Deschutes River is one of the most remarkable streams in the West for big gamey Redsides trout.

Cradled in a canyon of thousand-foot walls its scenic wonders and formations for one hundred miles rival some of the other great gorges of Western America.

Points on this stream are reached by The North Bank Road and Oregon Trunk Railway. Trains leave Portland each evening, arriving at Deschutes points at early morning hours. Maupin, Mecca, North Junction, Vanora, Kaskela, Bend and other places are favored fishing points.

Central Oregon towns are reached by an over-night journey. Automobiles make accessible all places of interest off the railway. At Bend the railroad again reaches the beautiful upper Deschutes River and the vast park-like pine forests which cover the eastern slope of the Cascade Mountains. The Metolius

River and Davis, Suttle and other lakes are noted for trout.

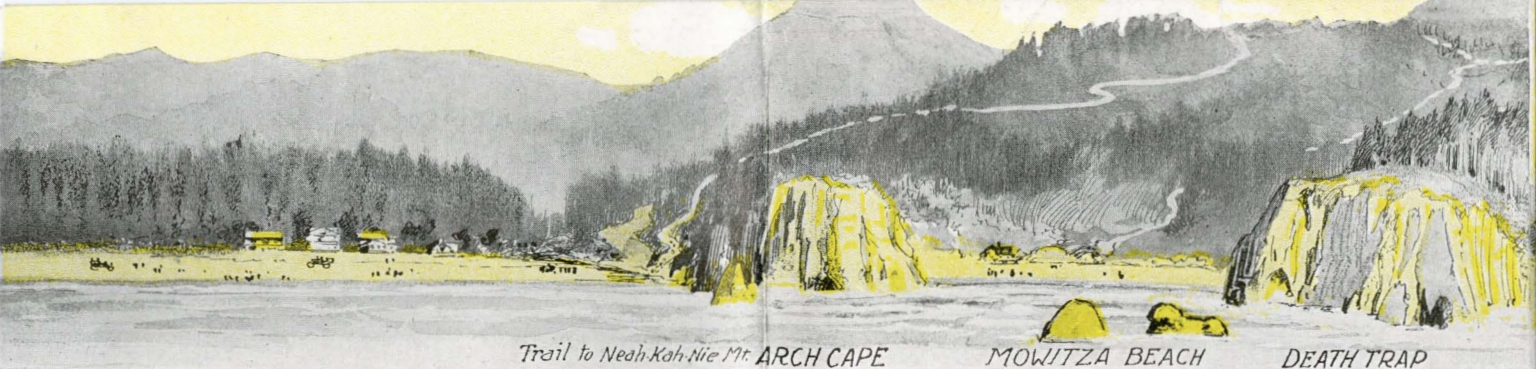
Crater Lake is reached by auto from Bend. In some respects this route through pine forests fully equals, if it does not surpass, any other route, and the expense is about the same. It is quite feasible to go in via Bend and return via Medford, or the reverse.

Bend is the gateway to the vast interior of Central Oregon, not yet reached by railroad. It is a thriving city, prettily located on the banks of the Deschutes River. Pilot Butte Inn, a new, modern tourist hotel, offers inducements to the visitor to prolong his stay and the traveler to or from the interior to make this a stopover point.

In the Bend district, within easy auto journey, are a series of cascading streams and deep lakes, in virginal country which are attractive for camping and fishing and hunting. At Paulina, O'Dell and Suttle Lakes there are camp lodge accommodations. Boats are kept at these places. There are two ranch inns on the Metolius River which take boarders and lodgers. There are also lodging accommodations at Pringle Falls on the upper Deschutes for fishermen.



Pilot Butte Inn, Bend, Ore.



Trail to Neah-Kah-Nie Mt. ARCH CAPE

MOWITZA BEACH

DEATH TRAP

Oregon's Second Crater Lake

A BOOK might be written of Paulina and East Lakes, in Newberry Crater, about thirty miles southeast of Bend and a little over two hours' auto journey east of La Pine. Of the Paulina Mountain proper and the view from its summit, of the lakes, hot springs, flora and peculiar geologic formations the enthusiasts declare it a rival, among the scenic wonders of Oregon, of Crater Lake.

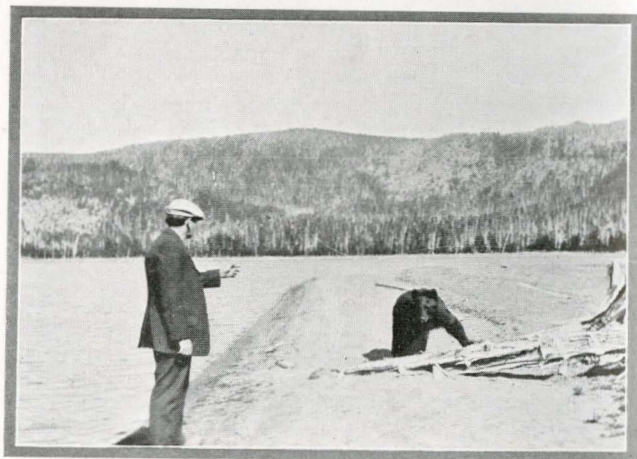
The summit is a huge crater, circular in shape, some six miles in diameter from rim to rim and hence nearly twenty miles in circumference. The rim rises from one thousand to two thousand feet above the floor of the crater. The highest point on the rim, which is named Paulina Peak, is on the south and has an elevation of 8,475 feet. It is used by the Forest Fire Service as a fire observation station. Extending down into the crater from Paulina Peak is a well-defined lava stream which is pronounced by Professor Russell of the U. S. Geological Survey, the most recent lava flow in the United States.

On the floor of the crater are two beautiful lakes, both of great depth. The name Paulina has been given to one and

East Lake to the other. Each is approximately two miles in diameter at its widest point. They are a short distance apart. Four years ago both lakes were stocked with steel-head trout which have thriven and some of them have attained a weight of fifteen pounds.

The Hot Mineral Springs are on East Lake and there is a small lodge here and the keeper has boats to let.

A fairly good road leads through the lodge pole forests to near the shore of Paulina Lake. The nearby forests provide hunting. By climbing to the ramparts of the crater magnificent views may be obtained. From the crest of Paulina Peak an aeroplane view is had of all Central Oregon. To the north, east and south extends the high, treeless plateau of this section of Oregon. Silver Lake can be seen and Steens Mountain shows in the distance. Looking westward the Cascade Range stretches out through three states with its beacons—Shasta, McLoughlin or Pitt, Mazama, Scott, Thielsen, Diamond Peak, Maiden Peak, Bachelor Butte, Broken Top, Three Sisters, Washington, Three Fingered Jack, Jefferson, Hood and Adams—seventeen snow peaks, a majestic spectacle in the clear atmosphere of that elevation.



Unexpected Encounter on East Lake.



One of the Lakes in Newberry Crater.



THROUGH WILLAMETTE VALLEY BY INTERURBAN

THE Oregon Electric Railway, the "Willamette Route," affords a pleasant side trip to the principal cities in the Willamette Valley. From Portland the main line of the Oregon Electric Railway runs 122 miles directly through the center of this attractive and fertile section, to Eugene, at the head of the valley.

Leaving Portland the interurban trains gradually ascend the low range of hills giving splendid views of the Willamette River, the far-spreading suburban sections of the city and Mt. Hood, dominating the Cascades in the distance. The Willamette is crossed on a high bridge at Wilsonville and interesting farming country is traversed.

Salem, the capital, with its state institutions and handsome civic center; Albany, prettily located on the river in almost the geographical center of the Valley, and Corvallis, seat of the State Agricultural College, one of the leading institutions of its kind, are all well worth seeing. At Eugene the State University is an attraction for tourists.

The round trip through the Valley may be easily made in a day, with time enough to make one or two sight-seeing stopovers.

Another division of the Oregon Electric reaches the Oreneo, where is located the largest nursery in the United

States; Hillsboro, center of a rich farming area, and Forest Grove, a pioneer home center where is located one of the pioneer colleges.

Eugene is the gateway to the McKenzie River. Summer camps are scattered for many miles on the McKenzie. This stream offers all the thrills as well as the trophies for the rod and creel, and the angling season open early on this water course. The most exciting form of this sport is to hire a boat, with an experienced pilot and drift down, shooting the rapids and trolling for Redsides and Dolly Vardens. A representative of the Oregon Electric will, if desired, engage boat and pilot and otherwise assist in the details of carrying out such a plan.

Fifty-seven miles from Eugene is McKenzie Bridge, an attractive hotel built of mammoth logs. A few miles distant is Belknap Mineral Hot Springs, which flows from under a mountain ledge, 168 degrees Fahrenheit. A new hotel, with bathing features, has been opened here this season. Four miles south of McKenzie Bridge is Foley Springs, with the same temperature. Here are a hotel, cottage and tent-house accommodations, a swimming pool and bathhouses.

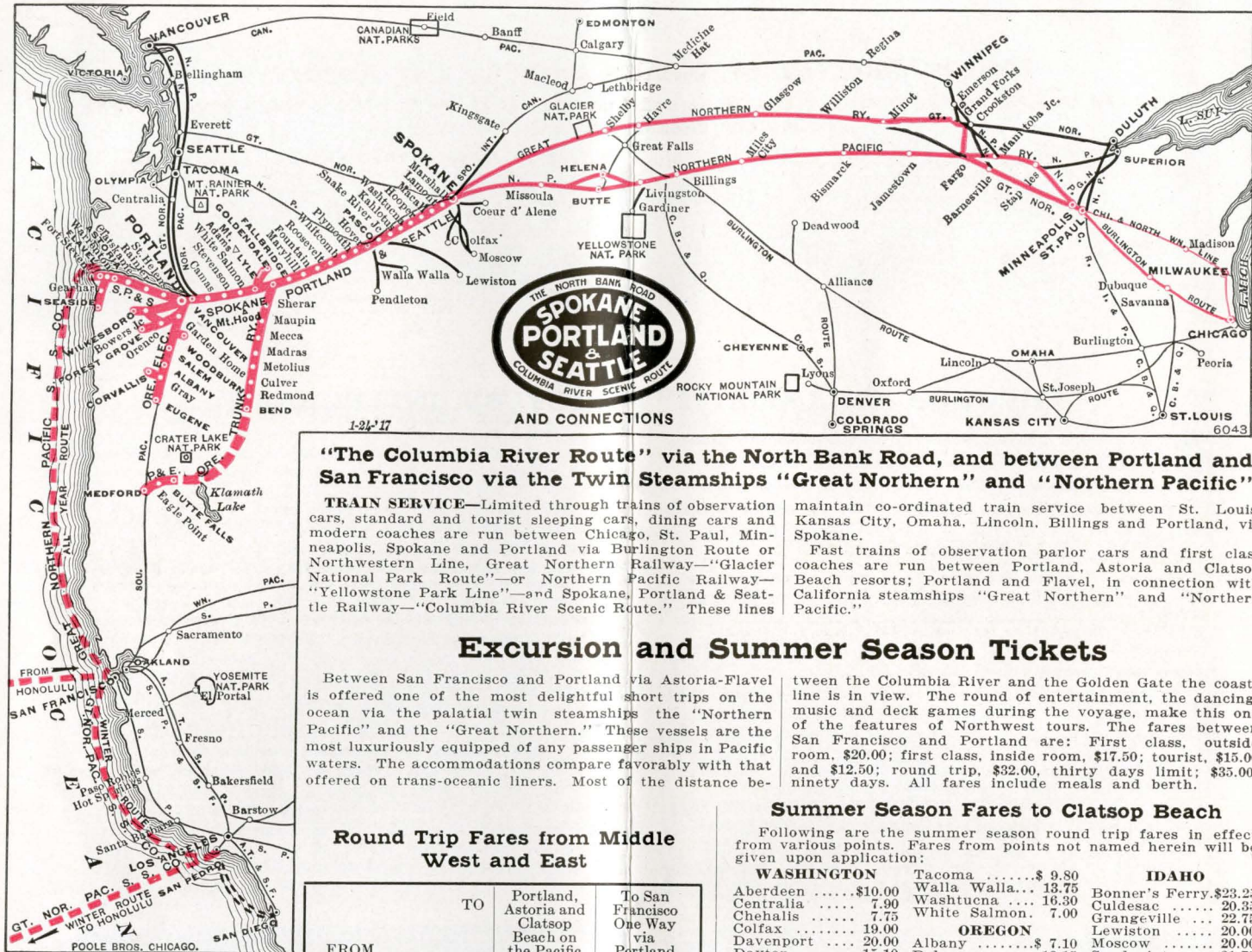
The source of the McKenzie is Clear Lake, a beautiful sheet of ice cold crystal water of wonderful depth, whose submerged forest trees, standing upright as they once grew, are one of the but little known wonders of Oregon.



Mineral Hot Springs at Carson, Wash.



Summer Camps in the Cascades.



"The Columbia River Route" via the North Bank Road, and between Portland and San Francisco via the Twin Steamships "Great Northern" and "Northern Pacific"

TRAIN SERVICE—Limited through trains of observation cars, standard and tourist sleeping cars, dining cars and modern coaches are run between Chicago, St. Paul, Minneapolis, Spokane and Portland via Burlington Route or Northwestern Line, Great Northern Railway—"Glacier National Park Route"—or Northern Pacific Railway—"Yellowstone Park Line"—and Spokane, Portland & Seattle Railway—"Columbia River Scenic Route." These lines

maintain co-ordinated train service between St. Louis, Kansas City, Omaha, Lincoln, Billings and Portland, via Spokane.

Fast trains of observation parlor cars and first class coaches are run between Portland, Astoria and Clatsop Beach resorts; Portland and Flavel, in connection with California steamships "Great Northern" and "Northern Pacific."

Excursion and Summer Season Tickets

Between San Francisco and Portland via Astoria-Flavel is offered one of the most delightful short trips on the ocean via the palatial twin steamships the "Northern Pacific" and the "Great Northern." These vessels are the most luxuriously equipped of any passenger ships in Pacific waters. The accommodations compare favorably with that offered on trans-oceanic liners. Most of the distance be-

tween the Columbia River and the Golden Gate the coastline is in view. The round of entertainment, the dancing, music and deck games during the voyage, make this one of the features of Northwest tours. The fares between San Francisco and Portland are: First class, outside room, \$20.00; first class, inside room, \$17.50; tourist, \$15.00 and \$12.50; round trip, \$32.00, thirty days limit; \$35.00, ninety days. All fares include meals and berth.

Round Trip Fares from Middle West and East

TO	Portland, Astoria and Clatsop Beach on the Pacific	To San Francisco One Way via Portland
Chicago.....	\$73.00	\$90.50
St. Louis.....	70.50	88.00
Peoria.....	71.95	89.97
Milwaukee.....	73.00	92.54
St. Paul.....	60.50	86.47
Minneapolis.....	60.50	86.47
Duluth.....	60.50	89.51
Kansas City.....	60.50	78.00
Omaha.....	60.50	78.00
Sioux City.....	60.50	80.60
Denver.....	55.50	73.00
Colorado Springs.....	55.50	73.00
Pueblo.....	55.50	73.00
Oklahoma City.....	71.90	86.20

Summer Season Fares to Clatsop Beach

Following are the summer season round trip fares in effect from various points. Fares from points not named herein will be given upon application:

WASHINGTON		IDAHO	
Aberdeen	\$10.00	Walla Walla.....	\$ 9.80
Centralia	7.90	Washtucna	16.30
Chehalis	7.75	White Salmon. 7.00	
Colfax	19.00	OREGON	
Davenport	20.00	Albany	\$ 7.10
Dayton	15.10	Baker	18.15
Eureka	13.75	Bend	13.95
Goldendale	9.10	Corvallis	7.50
Hoquiam	10.15	Eugene	8.80
Kennewick	13.15	Forest Grove.. 5.00	
Lyle	7.40	Harrisburg	8.15
North Yakima. 13.75		Hillsboro	4.80
Oakdale	20.00	Hood River	6.55
Olympia	9.20	Huntington	20.00
Palouse	20.00	La Grande	16.10
Raymond	9.80	Madras	12.15
Pasco	13.20	Pendleton	13.15
Pullman	20.00	Redmond	13.25
Ritzville	17.00	Salem	6.00
Seattle	11.50	The Dalles	7.40
Spokane	20.00	Woodburn	5.50
		MONTANA	
		Anaconda	\$34.25
		Billings	43.80
		Bozeman	38.20
		Butte	34.25
		Garrison	32.30
		Great Falls	34.25
		Hamilton	31.20
		Helena	34.25
		Kalspell	29.60
		Livingston	39.20
		Missoula	29.25

These tickets are on sale daily June 1 to October 15, with return limit of not later than October 31.

Fares for Short Trips between Portland and Nearby Points

Following are round trip fares from Portland to nearby points referred to in the pages of this folder:

Round Trips	
Clatsop Beach Points.....	\$3.00 Week-end
(Gearhart or Seaside)	4.00 Season
Astoria	\$3.00 Week-end
	4.00 Season
Albany	\$3.10 Week-end
	4.80 Season
Eugene	\$4.80 Week-end
	7.20 Season
Carson (Mineral Springs)	\$2.20 Week-end
	3.00 29 days
	1.90 Sunday

Corvallis	\$3.50 Week-end
	5.20 Season
Salem	\$2.00 Week-end
	2.75 Season
White Salmon	\$3.00 Week-end
	3.80 29 days
	2.30 Sunday
Bend	\$ 7.45 One way
	14.90 Season
Cascades (Mineral Springs).....	\$ 1.50 Sunday
Spokane	\$11.20 One way
	22.40 Season

Deschutes River Fishing Points (Summer):	
Sherar	\$ 5.80 Week-end
	8.70 Season
Maupin	\$ 6.15 Week-end
	9.20 Season
South Junction	\$ 7.35 Week-end
	11.00 Season
Coleman	\$ 7.50 Week-end
	11.20 Season
Crater Lake (via rail from Portland and auto from Bend for parties of four; auto fare not guaranteed)	\$26.90 Season

R. H. CROZIER, Assistant General Passenger Agent S. P. & S. Ry., Portland, Oregon

Hotels, Recreation, Health and Fishing Resorts

Condensed Information of Outing Places Reached from Portland by The North Bank Road, Oregon Electric and Oregon Trunk Railways

Clatsop Beach Hotels

Place	Name	Open	Capacity	Day	Week
Gearhart, Ore.	Lombard Cottage....	June, Oct.	25	\$3.00 up	\$15.00 up
	Tyberg House.....	All Year	30	\$0.75 up	European
Seaside, Ore..	Y.W.C.A. Cottage....	Jy 1-Spt. 1	40	Upon Appl'n
	Hotel Moore.....	All Year	250	\$3.50 up	Amer. Plan
	Locksley Hall.....	All Year	40	\$2.50 up	\$16. Am. Plan
	Torrey.....	Summer	*35	\$2.50 up	\$16.00 up
	Del Mar Apts.....	All Year	7	\$10.00
	Necanicum Inn.....	All Year	*35	\$2.00 up	\$12.00 up
	Depot.....	All Year	*45	\$1.00	\$ 7.00
	Rollins.....	All Year	*20	\$1.00	\$ 7.00
	Broadway.....	All Year	*35	\$0.50	\$ 3.00
	Colonial.....	All Year	*80	\$1.00	\$ 7.00
	American.....	All Year	*11	\$1.00	\$ 7.00
	Pacific View.....	All Year	*26	\$1.00 up	\$ 6.00
	Allen.....	All Year	*27	\$1.00 up	\$ 7.00
	Pickwick.....	All Year	*15	\$1.00 up	\$ 7.00
Flavel, Ore...	Mears.....	All Year	*40	\$1.00	\$ 7.00
	Royal.....	All Year	*16	\$1.00	\$ 7.00
	McGuire.....	All Year	*40	\$0.25 up	\$ 2.00 up
	Flavel Hotel.....	All Year	*89	\$2.00 up	\$12.00 up

Cannon Beach Hotels

†Ecola, Ore...	Warren Hotel.....	All Year	30	\$2.50, \$3.50	\$15, Am. Plan
	Arch Cape.....	All Year	*10	\$2.00	\$12, Am. Plan
	Cannon Beach.....	Summer	*26	\$2.00	\$12, Am. Plan

†Ecola is the postoffice for Cannon Beach and Elk Creek.

Astoria Hotels

Astoria, Ore..	Weinhard-Astoria...	All Year	150	\$1.50 up	European
	Merwin.....	All Year	60	.75	\$ 3.50
	Astor.....	All Year	75	.50	\$ 5.00
	Bay View.....	All Year	30	.50	\$ 5.00
	Centennial.....	All Year	35	.50
	Northern.....	All Year	55	\$1.00
	Occident.....	All Year	60	.50	\$ 3.00
	Oregon.....	All Year	25	\$1.00	\$ 3.00

Cascade Mountain Hotels

Carson, Wn...	Hot Springs Hotel..	All Year	*85	\$2.50 up	\$16, Am. Plan
	St. Martins.....	All Year	60	\$2.00	\$12, with baths
Foley Springs, Ore.....	Government Min-eral Springs.....	June, Oct.	*35	\$2.50	\$14, Am. Plan
	Foley Hot Springs..	All Year	*20	\$2.50	\$14, Am. Plan
Belknap Spgs. Ore.....	Belknap Log.....	June, Oct.	*18	\$2.00	\$12, Am. Plan
McKenzie Bridge, Ore.	McKenzie Br. Hotel.	Apr.-Oct.	24	\$1.50	\$15, Am. Plan
Husum, Wn...	Husum.....	All Year	15	\$1.50	\$9, Am. Plan
Guler, Wn....	Mountainbrook Inn	May-Oct.	20	\$2.00	\$10.50, Am. Pl.
	Guler.....	All Year	50	\$1.50	\$9, Am. Plan
White Sal-mon, Wn...	"The Eyrie".....	May-Oct.	35	\$3.00	\$18, Am. Plan
Klickitat, Wn.	Jewett Farm Home.	May-Oct.	25	\$2.50	\$15, Am. Plan
	Seven Oaks Inn....	All Year	\$2.50
Blockhouse, Wn.....	Klickitat.....	All Year	*25	\$1.50	\$12, Am. Plan
	Mineral Springs....	All Year	*32	\$2.00	\$12, Am. Plan

* Star indicates number of rooms; otherwise number of guests.
For detailed information managers of hotels shown above may be addressed.

Tent Houses

Nelson's Tent City has been conducted for several years at Seaside. There are 26 fully equipped housekeeping tents furnished complete with all conveniences including wood and water. A tent with one full bed, accommodating two people, rents for \$6 per week. A tent, with full bed and cot, accommodating three people, rents for \$7 per week. A tent for four people, \$8 per week; five people, \$9 per week, and six people, \$10 per week. Tents and board houses in a grove, one block from the ocean and near to the retail center of the town. The grounds are kept clean and sanitary. Season June 1 to Labor Day. Address Mr. and Mrs. W. W. Nelson, Box 65, Seaside, Oregon.

There are also: Hoopes' Tent City, 25 tents; George Hill Tent City, 15 tents; Rose City Tents, on boardwalk, 15 tents; Walker Tent City, 10 tents.

Deschutes River Fishing Resorts—Reduced round trip fares in effect Saturdays—good until Monday following—via The North Bank Road and Oregon Trunk Ry. from April until October. Hotels furnish comfortable accommodations at Sherar's (postoffice address Tygh Valley), Maupin and Coleman, at \$1.50 per day and upward. For information as to accommodations or outings in the interior write to the Commercial Club of Bend, Redmond, Madras, Culver, Metolius, Lapine or Sisters, Ore.

Central Oregon Lakes—O'Dell, Paulina and Suttle Lakes are reached from Bend. Lodging accommodations in camps are obtainable at these places. For Suttle Lake take auto stage for Sisters and thence to Suttle Lake to Heathman's. For O'Dell and Paulina Lakes, at Bend inquire at Pilot Butte Inn.

Metolius River Fishing Resorts, Heising and Allen Ranches—About 39 miles from Bend, or Culver, or Redmond Ore. Big game, fish. Tennis courts; elevation 2600 feet. House and tent house accommodations for 40 people. Rates \$2.00 per day, \$10.00 per week. Furnished tent \$1.00 per day, without board. Write to Dan Heising, Midway Ranch, or Allen Ranch, Sisters, Ore.

Carson, Wash., Hot Springs—Take North Bank trains to Carson. Auto livery service to Shipherd's, Government and St. Martins' Springs.

White Salmon River Fishing Resorts—Take North Bank trains to White Salmon, Wash. Hotel accommodations at White Salmon, Husum and Guler.

Maddock's Springs—On Goldendale branch, The North Bank Road. Camping and boarding resort on Klickitat River. Accommodations for 18 people; tent houses, etc. Write Mrs. J. G. Maddock, Waukiakus, Wash.

Klickitat Springs—On Goldendale branch, The North Bank Road. Mineral waters, hotel and camping place. Write Klickitat Hotel, or W. H. Robertson, Klickitat, Wash.

Goldendale, Wash.—Information of fishing and camping trips in Klickitat or Mt. Adams country, etc., will be supplied upon request to Edward Abeling, secretary Commercial Club, Goldendale, Wash.

McKenzie River Resorts—Take Oregon Electric Railway trains from the North Bank station, Portland to Eugene, Ore. Foley Hot Springs—168 degrees F.—by auto or stage from Eugene. Tub and pool baths. Hotel, tent-house and camping accommodations. Fishing, hunting, mountain climbing. Belknap Hot Springs—168 degrees F.—near Foley's. Hotel and camping privileges. McKenzie Bridge Hotel, at junction of highway, five miles from Foley's and four miles from Belknap's. Hotels at Deerhorn and Blue River.

Further information about resorts reached by the lines of this company, or assistance in arranging for outing trips will be cheerfully furnished upon request to W. D. Skinner, Traffic Manager, Portland, Ore.

PASSENGER STATIONS

Portland, Ore.—Tenth and Hoyt Streets, North Bank Station.
Spokane, Wash.—Great Northern and Northern Pacific Stations.
R. H. CROZIER, W. C. WILKES,
Asst. Gen. Pass. Agt. Asst. Gen. Frt. and Pass. Agt.
W. D. SKINNER, Traffic Manager, Portland, Ore.

PRINCIPAL CITY TICKET OFFICES

Portland—L. F. Knowlton, City Ticket Agent, Fifth and Stark Sts.
Spokane—Waldo G. Paine, Assistant General Freight and Passenger Agent, Terminal Bldg. H. S. Wagner, City Passenger Agent, Davenport Hotel.

Astoria—G. B. Johnson, General Agent, Twelfth St., opposite Weinhard Hotel.

Seattle—J. O. McMullen, City Passenger Agent, Northern Pacific Ry., L. C. Smith Bldg. T. J. Moore, City Passenger and Ticket Agent, Great Northern Ry., corner Second Ave. and Columbia St.

Tacoma—C. B. Foster, City Passenger Agent, Northern Pacific Ry., 925 Pacific Ave. F. P. Herbert, City Passenger and Ticket Agent, Great Northern Ry., Bankers' Trust Bldg.

San Francisco—665 Market St., A. B. C. Denniston, Assistant General Passenger Agent, Great Northern Pacific S. S. Co.

REPRESENTATIVES

Agents of various railroads sell tickets via the routes outlined herein. Additional details, fares, schedules, sleeping car accommodations, etc., will be furnished by ticket agents of Great Northern, Northern Pacific or Burlington Route, Spokane, Portland & Seattle, Oregon Trunk, and Oregon Electric Railways.

GOLDEN DAYS
at Clatsop Beach



SEASHORE OUTINGS
CLATSOP BEACH
PACIFIC OCEAN



**SEASHORE
AND MOUNTAIN
RESORTS
IN THE PACIFIC
NORTHWEST**



IN THE
FOREST PRIMEVAL
from Photographs

