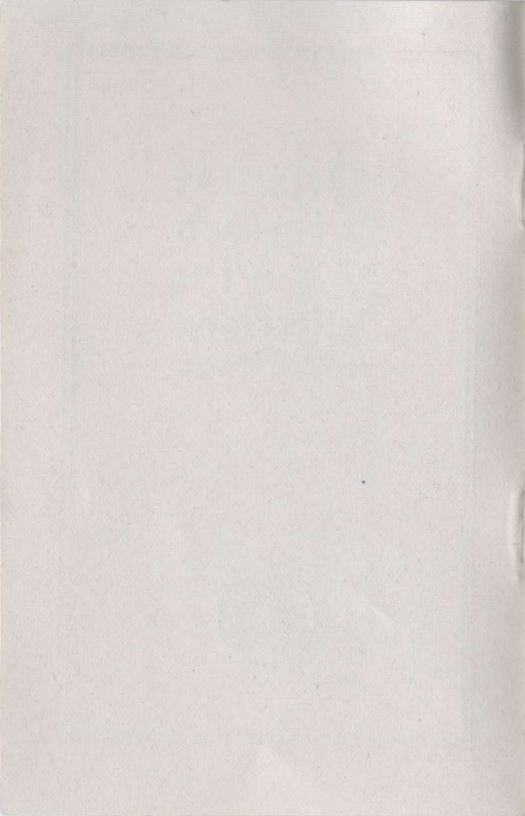


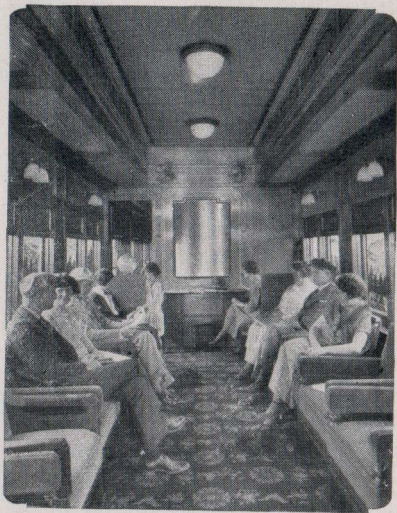
Oriental
Limited
Train
Directory





THIS LITTLE
DIRECTORY *of the*
New Oriental Limited
is published for the
purpose of acquainting
the patrons of the train
with the manifold com-
forts and conveniences
which make it "The
Finest Train" between
Chicago, St. Paul,
Minneapolis and the
Pacific Northwest and
assure its patrons serv-
ice of the highest class.
No Extra Fare

*For location of various features
consult index on page sixteen.*



COMPARTMENT OBSERVATION CAR

The New ORIENTAL
LIMITED

"As Wonderful As the Country It Serves"

Two

The Compartment Observation Car

Located at extreme rear end of train.

This Car Offers:

- A deeply recessed observation platform with comfortable seats.
- An observation room, equipped with restful upholstered movable arm chairs and new design extra high windows with unexcelled facilities for uninterrupted observation.
- A women's lounge room with shower bath in connection and a maid who is also a manicure, expert hair dresser and masseuse, in attendance.
- A men's smoking and club room with leather upholstered settees.
- A well stocked buffet in charge of porter where mineral waters and soft drinks may be obtained. Cigars, cigarettes, and playing cards are also carried in stock.
- A snug writing compartment with desk stocked with note paper, envelopes, post cards, correspondence cards and a locked mail box. Stamps may be obtained from porter in charge of car.
- Principal magazines of current month. Daily newspapers. Official Railroad Guide. Hotel Guide. Telegraphic daily news bulletins, baseball scores and stock market quotations.



THE WOMEN'S LOUNGE

Located In Compartment Observation Car.

The New ORIENTAL
LIMITED

"As Wonderful As the Country It Serves"

Descriptive literature of country through which train is passing.

Photograph albums of views in Glacier National Park.

Telegraph blanks.

A card adaption of the Chinese game of Mah Jongg. Ask the porter or maid.

The service of 4 o'clock tea daily to standard sleeping car passengers without charge.

Telephone connection is made direct from car while in terminals at Chicago, St. Paul, Seattle and Tacoma. No charges for local calls. Telephone directories of these four cities are on car.

This car also contains a Drawing Room and Two Compartments which may be purchased singly or ensuite.

The conveniences of the Observation Car are free to Standard Sleeping Car passengers.

The Ladies' Maid

Women traveling with children, and without nurses or maids, will find the services of the Ladies' Maid on the New Oriental Limited invaluable and a pleasant convenience during their trip. You are invited to make free use of her services.



WOMEN'S SHOWER BATH
Located In The Compartment Observation Car.

The New ORIENTAL
LIMITED

"As Wonderful As the Country It Serves"

Manicure - Hairdressing - Message

The Ladies' Maid on the New Oriental Limited is also a competent manicure, hairdresser and masseuse.

Manicure.....75c Hairdressing.....75c
Facial Massage..75c Shampoo.....75c

The porter of your car will arrange for the services of the Maid at your request.

Women's Shower Bath

The women's shower bath is located in the Compartment Observation Car just off the ladies' lounge and is in charge of the Maid. Reservations should be made through her. The charge for use of bath is 50 cents.

Barber and Valet

You will find the barber shop, valet and men's shower bath located in the car immediately forward of the dining car.

A skilled barber, who is also a specialist in the art of trimming and bobbing women's hair, is in attendance.

Charges for Barber Service for Women

Shingle Bob...\$1.00 Shampoo.....75c
Straight Bob... 1.00 Hairdressing....75c
Trimming Hair 1.00 Facial Massage...75c

Charges for Barber Service for Men

Haircut.....50c Hair Singe.....25c
Shampoo.....50c Beard Trimmed..35c
Facial Massage..50c Tonic.....25c
Shave.....25c Shower-bath....50c



BARBER SHOP

The New ORIENTAL
LIMITED

"As Wonderful As the Country It Serves"

Eight

Charges for Pressing Clothing

Entire Suit . . .	\$1.25	Trousers	\$0.50
Coat75	Overcoat	1.00
Vest25	Lady's Skirt75

The porter in your car will arrange with the valet for any pressing you may wish done during the night.

The Oriental Limited is vacuum cleaned daily.

The Dining Car

The beautiful new dining cars, on the New Oriental Limited are the work of the country's foremost designers and decorators. They are extremely wide and roomy and seat 36 people comfortably.

Kitchen and pantry are of extra size. The latest development in lockers and ice boxes assures fresh and clean food. The problem of ventilation and elimination of cooking odors has been solved through the liberal use of exhaust fans and automatic ventilators. The car, Pullman-built, is devoid of vibration, a point appreciated by those who eat as they travel. The crew, instead of sleeping in the dining car, as is generally the case, have specially designed quarters in the forward part of the train.

Passengers have their choice of either a la carte or table d'hôte meals at reasonable prices.

Consist of Train Equipment

Westbound

Observation Car, Chicago to Seattle-Tacoma, Car B-1.

Pullman, 12 section Drawing Room Sleeping Car, Chicago to Seattle-Tacoma, Car B-2.

Pullman Sleeping Car, Chicago to Portland via S. P. & S., Spokane to Portland. (10 sections, 2 Compartments, Drawing Room.) Car B-6.

Pullman Drawing Room Sleeping Car, St. Paul-Minneapolis to Seattle.

Dining Car, Chicago to Seattle-Tacoma.

Pullman, 12 section Tourist Sleeping Car, Chicago to Seattle-Tacoma, Car B-G.

(Sleeping cars ready for occupancy Chicago Union Station at 10 p. m.)

First Class Coach and Smoking Car, Chicago to Seattle-Tacoma.

Extra cars in service as required.

Eastbound

Observation Car, Tacoma-Seattle to Chicago, Car G-1.

Pullman, 12 section Drawing Room Sleeping Car, Tacoma-Seattle to Chicago, Car G-2.

Pullman, 12 section Drawing Room Sleeping Car, Seattle-Spokane, Car 80.

Pullman Sleeping Car, Portland to Chicago via S. P. & S., to Spokane. (10 sections, 2 Compartments, Drawing Room.) Car G-6.

Pullman Drawing Room Sleeping Car, Glacier Park to Chicago.

Pullman, 12 section Tourist Sleeping Car, Tacoma-Seattle to Chicago, Car G-G.

Dining Car, Tacoma-Seattle to Chicago.

Pullman, 12 sections Sleeping Car, Helena to St. Paul, on train 236 Helena to Havre, Car 17.

First Class Coach and Smoking Car, Tacoma-Seattle to Chicago.

Extra cars in service as required.



NEW TYPE EASY RIDING STEEL PULLMAN STANDARD
SLEEPING CARS WITH PERMANENT HEADBOARDS
BETWEEN SECTIONS INSURING PRIVACY AND FREE-
DOM FROM DRAFTS.

The New ORIENTAL
LIMITED

"As Wonderful As the Country It Serves"

Twelve

Oriental Limited Condensed Schedule

Westbound—Read Down Eastbound—Read Up

	49 Daily PM	Burlington Route Central Time		52 Daily PM	
Mon.	11 00	Lv Chicago.....	Ar	7 55	Thu.
Tues.	11 00	Ar St. Paul.....	Lv	8 00	Thu.
	1 Daily	Great Northern Ry.		2 Daily	
Tues.	11 25	Lv St. Paul.....	Ar	7 30	Thu.
Tues.	12 01	“ Minneapolis.....	“	7 00	Thu.
Tues.	6 05	“ Fargo.....	“	10 57	Wed.
Tues.	8 15	“ Grand Forks.....	“		
Wed.	2 15	“ Minot.....	Lv	4 10	Wed.
Wed.	5 40	Ar Williston.....	Lv	12 30	Wed.
		Mountain Time			
Wed.	4 45	Lv Williston.....	Ar	11 25	Wed.
Wed.	1 30	Ar Havre.....	Lv	2 45	Wed.
Wed.	7 53	“ Glacier Park.....	“	9 12	Tues.
Wed.	10 05	“ Belton.....	“	6 36	Tues.
Thu.	3 10	“ Troy.....	“	1 35	Tues.
		Pacific Time			
Thu.	2 15	Lv Troy.....	Ar	12 30	Tues.
Thu.	7 00	Ar Spokane.....	Lv	8 20	Tues.
Thu.	7 15	Lv Spokane.....	Ar	8 00	Tues.
Thu.	5 53	Ar Everett.....	Lv	9 05	Mon.
Thu.	7 00	“ Seattle.....	“	8 00	Mon.
Thu.	8 40	“ Tacoma.....	“	6 20	Mon.
	223	Connecting Trains		236	
Wed.	2 00	Lv Havre.....	Ar	1 40	Wed.
Wed.	6 15	Ar Great Falls.....	Lv	9 40	Tues.
.....		“ Helena.....	“	6 20	Tues.
.....		“ Butte.....	“	3 30	Tues.
	1	Spokane, Portland and Seattle Ry.		2	
Thu.	7 40	Lv Spokane.....	Ar	6 30	Tues.
Thu.	7 00	Ar Portland.....	Lv	8 00	Mon.

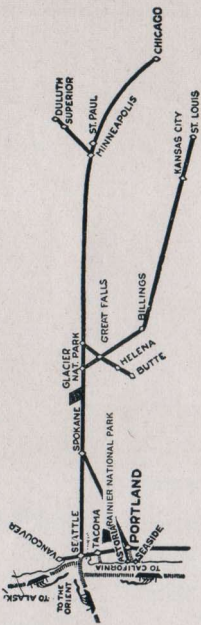


WIDER, ROOMIER DINING CARS
DEVOID OF VIBRATION

The New ORIENTAL
LIMITED

"As Wonderful As the Country It Serves"

Fourteen



Route of The New Oriental Limited

Through between Chicago and Seattle, Tacoma, Portland
 via St. Paul-Minneapolis, Glacier National Park and Spokane

I N D E X

Barber Shop.....Page 7
Consist of Train.....Pages 10 and 11
Dining Car.....Pages 9, 10 and 11
Hairdresser.....Page 7
Ladies' Maid.....Pages 5 and 7
Manicurist.....Page 7
Observation Car....Pages 3, 5, 7, 10 and 11
Lounge (Women's).....Page 3
Men's Smoking Room.....Page 3
Standard Sleeping Car.....Pages 10 and 11
Telephone Connections.....Page 5
Tourist Sleeping Car.....Pages 10 and 11
Shower Bath (Women).....Page 7
Shower Bath (Men).....Page 7
Valet.....Pages 7 and 9

