



An Open Pit Mine

### DULUTH — VIRGINIA — ELY

#### The Arrowhead Country

To the north and east of Duluth lies the Arrowhead Country — a marvelous vacation land long famous for its lakes and streams — a land of the big game, the moose, the deer and the bear — a land where the trail leads upwards and onwards into the forest primeval with its hunting and fishing.

Starting from Duluth the bus climbs the high bluff that overlooks the city and turning to the north takes you past Half Moon and the Central Lakes to the famous iron mining region.

#### The Iron Range

Covering an area of some four hundred square miles around Virginia is the Mesabi Iron Range which contains the world's largest deposits of iron ore. This ore lies so near the surface that the open pit method of mining is used; the surface dirt is stripped away and huge steam shovels scoop up several cubic yards of ore in one bite and dump it into railroad cars ready for the trip to the mills. These open pit mines are well worth a visit, as some of them are over a mile wide and several hundred



Travel by Bus

feet deep, and the steam shovels and trains look like automatic toys to the spectator on the rim. This district also has several fine lakes and Virginia boasts an excellent golf course.

Leaving Virginia the bus turns to the northeast and enters the country of the pine tree.

#### Lake Vermilion

Beautiful Lake Vermilion, on whose shores Tower is located, is one of the largest lakes in the state. Its rugged shore line with its background of pines, studied here and there with patches of the white birch tree, makes a wonderful frame for the sky-blue waters that surround the 365 islands of the lake.

This lake is a paradise for the fisherman and the vacationist. Its waters abound in pike, bass and "muskie" and the veriest "dub" can bring in a string of them that will make the "bunch" back home green with envy.

#### Ely

Ely, the end of the bus journey, is the entrance point of the Superior National Forest Region, a canoeist's wonderland. Here your canoe will carry you into the depths of the wilderness, the home of the moose and the deer. You will float on the same



The Land of the Canoe

waters that carried the voyageurs and fur-traders. You can follow the trail of Verendrye, of David Thompson, of Du Luth and of the many others whose names are famous in the early history of the Northwest.

It is truly a marvelous outing to paddle your canoe down the clear little rivers and through the island dotted lakes that spread in every direction before you; to go as slow or fast as you desire and to camp out under the stars when and where you will, and once you have entered this country you will hate to leave and each year will see you back among the streams and lakes of the outers' "happy hunting grounds," the Arrowhead Country.

For further information about fares, schedules or trips to the Arrowhead Country, apply at any Bus Station, or address

### NORTHLAND TRANSPORTATION COMPANY

507 W. Superior Street,  
Duluth, Minn.

### Condensed Schedules

#### MINNEAPOLIS—ST. PAUL—DULUTH Via Highway No. 1

Read Down			Read Up		
A. M.	P. M.	P. M.	P. M.	P. M.	P. M.
7:30	1:00	5:30	1:20	6:50	11:20
8:05	1:35	6:05	12:45	6:15	10:45
9:00	2:30	7:00	11:50	5:20	9:50
9:30	3:00	7:30	11:20	4:50	9:20
10:10	3:40	8:10	10:40	4:10	8:40
11:10	4:40	9:10	9:40	3:10	7:40
11:50	5:20	9:50	9:00	2:30	7:00
12:35	6:05	10:35	8:15	1:45	6:15
1:20	6:50	11:20	7:30	1:00	5:30

#### TWIN CITIES—TAYLORS FALLS—DULUTH The Friendly Valley

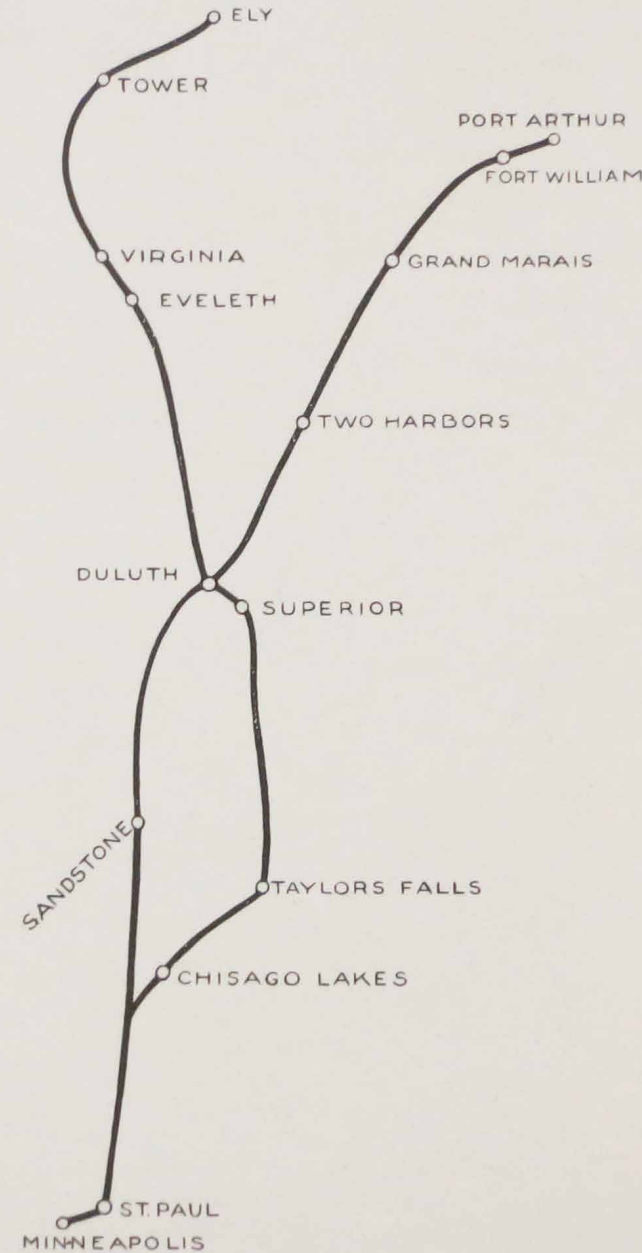
Read Down			Read Up		
A. M.	P. M.	P. M.	A. M.	P. M.	P. M.
10:30	3:00	Minneapolis	4:35	9:05	
11:05	3:35	St. Paul	4:00	8:30	
11:30	4:00	White Bear	3:35	8:05	
11:50	4:20	Forest Lake	3:10	7:40	
12:05	4:35	Chisago City	2:55	7:25	
12:30	5:00	Ar. Taylors Falls	2:30	7:00	
12:45	5:15	Lv. Taylors Falls	2:15	6:45	
2:35	7:05	Danbury	12:30	5:00	
4:05	8:35	Superior	10:55	3:25	
4:35	9:05	Duluth	10:30	3:00	

#### DULUTH—PORT ARTHUR The North Shore

Read Down			Read Up		
A. M.	A. M.	P. M.	P. M.	A. M.	P. M.
—	9:00	Duluth	4:30	—	—
11:30	10:15	Two Harbors	3:30	11:00	—
12:30	11:15	Beaver Bay	2:30	10:00	—
—	12:15	Ar. Tofte	1:30	9:00	—
1:30	1:00	Lv. Tofte	12:45	—	—
2:30	2:15	Grand Marais	11:45	7:30	—
—	3:45	Pigeon River (U. S. Boundary)	10:15	—	—
—	5:45	Fort William	8:15	—	—
—	6:00	Port Arthur	8:00	—	—

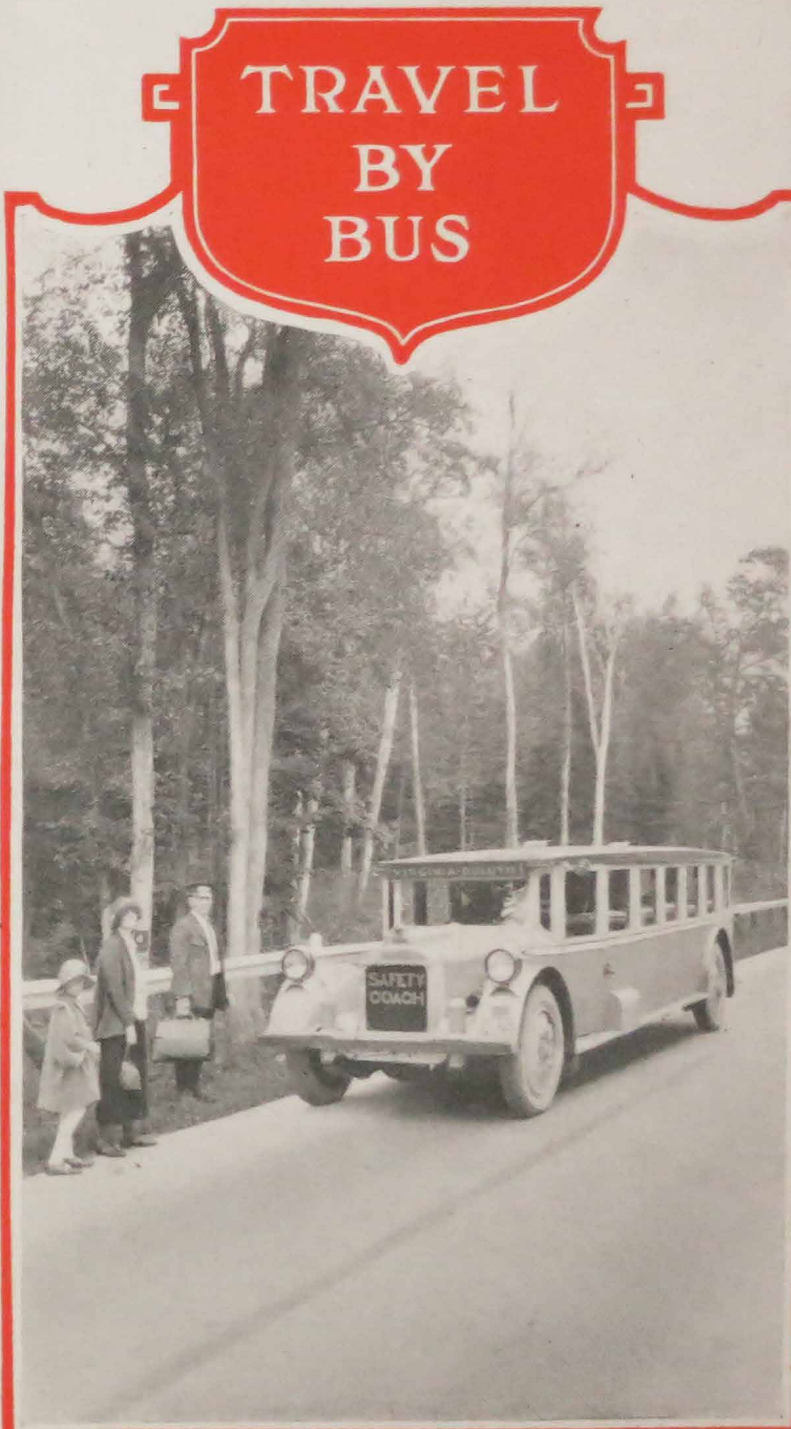
#### DULUTH—VIRGINIA—ELY The Arrowhead Country

Read Down			Read Up		
A. M.	P. M.	P. M.	A. M.	P. M.	P. M.
7:30	2:30	Duluth	3:45	10:45	—
8:50	3:50	Cotton	2:25	9:25	—
9:20	4:30	Eveleth	1:45	8:45	—
9:30	4:45	Ar. Virginia	1:30	8:30	—
9:30	5:00	Lv. Virginia	1:15	8:30	—
9:55	5:25	Piketown	12:50	8:20	—
10:30	6:00	Tower	12:15	7:45	—
11:15	6:45	Ely	11:30	7:00	—



Map showing routes covered by Northern Transportation Company

PRINTED IN U. S. A.

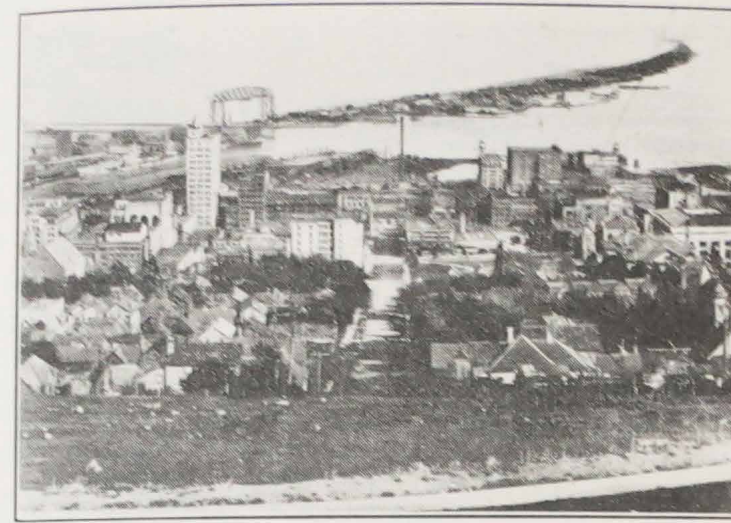


Northland Transportation Co.





*A "Northern" Bus*



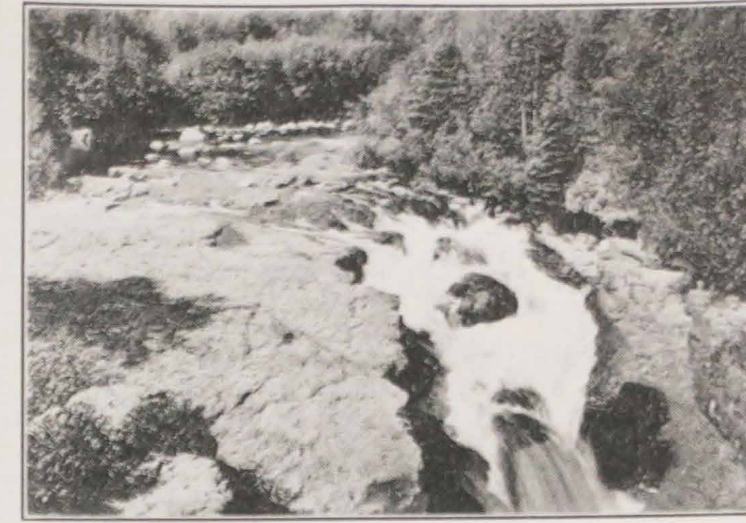
*Duluth from the Boulevard*



*The Dells of the St. Croix*



*On the Highway in Wisconsin*



*Falls on the North Shore Highway*



*International Boundary, Pigeon River*

## **MINNEAPOLIS — ST. PAUL — DULUTH**

### **Highway No. 1**

For travel between the Twin Cities, the Twin Ports and the other cities and resorts of the north woods country, the large roomy busses of the Northland Transportation Co., are ideal. These new parlor car busses, seating twenty-two people, carry you safely and swiftly over the highways that wind in and out past the lakes and streams and forests which have made this north country famous as a summer playground.

Leaving the station in Minneapolis the bus, traveling in an easterly direction, takes you through the business section of the "Flour City," the Midway district and the down-town section of St. Paul, and then turning to the north carries you past the tidy little farms and gardens, that supply the markets of these two cities with fruits and vegetables, to White Bear.

White Bear and Bald Eagle Lakes are about twelve miles from St. Paul and on their shores are the summer homes of a great number of St. Paulites.

Continuing to the north you pass through several thriving farming communities, past Forest Lake and Pine City, with its two beautiful lakes both well known for their fishing, and on to Sandstone.

## **Sandstone**

Here, on the banks of the Kettle River, are the huge quarries that produce some of the most remarkable building stone in the country, and in the Kettle River there is to be found excellent fishing for bass, pike and an occasional sturgeon.

From here the road still continues to the north for several miles, passing through Rutledge, Willow River and Moose Lake, the town that was burnt out by a forest fire several years ago. Traces of this fire can still be seen and from here the road gradually turning to the northeast takes you through many other prosperous towns and over the St. Louis River to the high bluffs that overlook Duluth.

## **Duluth**

Duluth, a splendid city of about 100,000 people is situated on the extreme western tip of Lake Superior and is one of the world's great ports. Thousands of tons of iron ore, not to mention wheat and the other Northwest products, are shipped from here annually.

It is a beautiful city, especially when seen from the boulevard that runs along the bluff 300 feet above the lake. From here you can see the city spread out below you, the harbor with Minnesota Point stretching out towards the Wisconsin shore, the Aerial Bridge and Lake Superior with the steamers gradually slipping over the horizon.

## **TWIN CITIES—TAYLORS FALLS—DULUTH**

### **The Friendly Valley**

The valley of the St. Croix River comprising a considerable portion of eastern Minnesota and western Wisconsin is known as the "Friendly Valley." It is essentially a farming and dairying country although there is some manufacturing being done in the various towns.

Scenically it is one of the prettiest spots in the Northwest and the bus trip through the heart of this valley is an unending succession of lakes, streams and woods, each seemingly more beautiful than those which have gone before.

Upon leaving St. Paul the bus follows No. 1 Highway for twenty-eight miles and then branches off towards the east to Chisago City and the Chisago Lakes.

### **The Chisago Lakes**

There are four of these lakes of which Chisago and Green Lakes are the largest, and they stretch in every direction from Chisago City. On their shores are model resort hotels, inns and cottage groups for summer housekeeping, making it possible for both the week-end visitor and the family spending an entire summer to want for nothing in the way of complete pleasure. Fishing is especially good here; bass, pickerel, crappies and sunfish being the most

numerous. Nowhere will there be found a greater diversity of sports and amusements, at such reasonable rates, as here.

Leaving Chisago City the bus passes through Lindstrom and Center City, the other two towns of the Chisago Lakes, and continuing to the east is soon on the high hills overlooking Taylors Falls and the Dells of the St. Croix.

### **Taylors Falls**

Descending the hill the bus moves onto the bridge crossing the river where we have an excellent view of the Dalles. Here nature, with her children, the wind, the ice and the waters of the river has carved the rocky sides of the Dalles into innumerable odd and wondrous shapes which, today, bear the names of "Devil's Chair," "Angle Rock," "The Old Man of the Dalles" and others. These wonderful rock formations, with the river flowing in between and the whole crowned with a forest of maples, oaks and evergreens make a picture you will never forget.

On the other side of the bridge is the state of Wisconsin and the town of St. Croix Falls, and here the bus turns to the north. From now on the country gradually assumes a wilder aspect and the bus rolls smoothly on up hill and down dale past stream and rivers and small towns and villages until, before you know it, you are on the streets of Superior and the journey is nearly over.

## **DULUTH — GRAND MARAIS —**

### **PORT ARTHUR**

#### **Along the North Shore**

Nearly two hundred miles of first class roadway passing through a magnificently scenic country where wilderness is king, that is the North Shore Highway. A beautiful drive skirting the shore of Lake Superior and meandering in and out past tumbled hills, unbroken forests, over murmuring brooks and dashing waterfalls with, every now and then, a glimpse of some crystal lake set back among the lofty pine and spruce. Here too, the moose and the deer still roam in numbers and the smaller animals find seclusion among the trees and underbrush that lines the road.

Starting from Duluth the bus follows State Highway No. 1 along the North Shore until it reaches Two Harbors, a city of over 5,000 people and an important shipping point for the iron ore region to the Northwest. Then, still clinging to the rocky shore of the lake, the highway leads past several little villages to Grand Marais.

#### **North of Grand Marais**

To the north of Grand Marais lies the Gunflint Trail and the wilderness of the north woods. This is the land of the virgin pine and deep lakes, the

waters of Gunflint attaining a depth of over 600 feet. Every stream is a trout stream and in the lakes pike, bass and lake trout abound.

Leaving Grand Marais the bus continues along the Lake Superior shore for several miles and then turning inland crosses the International Boundary into Canada at Pigeon River.

### **Pigeon River**

In this district there are numerous lodges and resorts where a delightful vacation may be spent visiting the falls of the Pigeon River, hiking along dim forest trails or fishing in the many streams and the Pigeon River.

Forty miles farther on is Fort William and Port Arthur, the Twin Ports of Canada.

### **Fort William and Port Arthur**

These two cities located on the shores of Thunder Bay are Canada's outlet on Lake Superior, shipping vast quantities of grain, ore and pulpwood annually.

The country around these towns and the Lake Nipigon district is a wonderful vacation land and is very interesting historically, being the country first visited by the early explorers and fur-traders.

A good way to make this trip is to go one way by bus and the other way by boat, as arrangements have been made with the Northern Navigation Company to honor bus tickets on their boats.