

### 3 DEPARTURES EVERY DAY—EACH WAY

Pacific Standard Time

SOUTH BOUND—Read Down

NORTHBOUND—Read Up

STREAMLINED INTERNATIONALS			VANCOUVER, B. C. BELLINGHAM- MOUNT VERNON- EVERETT-SEATTLE G. N. Ry.			STREAMLINED INTERNATIONALS					
361 Daily PM	359 Daily PM	357 Daily AM				358 Daily AM	360 Daily PM	362 Daily PM			
6 30	1 00	8 00	Lv Vancouver, BC.....	Ar	11 59	5 40	10 20				
6 50	1 22	8 23	Lv New Westminster.....	Lv	11 40	5 20	10 01				
			Lv Crescent Beach.....	Lv	11 13						
7 20	1 53	8 57	Lv White Rock.....	Lv	11 06	4 54	9 29				
			U. S. —Can. Bdry.								
7 29	2 01	9 09	Lv Blaine, Wash.....	Lv	10 59	4 46	9 19				
7 43			Lv Ferndale.....	Lv	10 42						
8 00	2 30	9 41	Lv Bellingham.....	Lv	10 28	4 21	8 53				
		10 18	Lv Burlington.....	Lv	9 49						
8 43	3 08	10 27	Lv Mount Vernon.....	Lv	9 41	3 39	8 06				
		10 40	Lv Stanwood.....	Lv	9 25						
		11 00	Lv Marysville.....	Lv							
9 31	3 47	11 15	Lv Everett.....	Lv	8 56	2 51	7 20				
9 52	4 06	11 38	Lv Edmonds.....	Lv	8 35	2 30	6 56				
10 25	4 35	12 10	Ar Seattle.....	Lv	8 05	2 00	6 25				
Western Star 4 Daily			SEATTLE-SPOKANE- MINNEAPOLIS- ST. PAUL-CHICAGO G. N. Ry.			Empire Builder 31 Daily			Western Star 3 Daily		
10 00	—	3 30	Lv Seattle.....	Ar	7 50	—	—	5 30			
10 30	—	3 58	Lv Edmonds.....	Lv	7 16	—	—	4 54			
10 49	—	4 18	Ar Everett.....	Lv	6 55	—	—	4 30			
11 10	—	4 18	Lv Everett.....	Ar	6 45	—	—	4 07			
7 10	—	11 15	Lv Spokane.....	Lv	11 55	—	—	9 15			
10 25	—	6 25	Ar Minneapolis.....	Lv	9 40	—	—	8 45			
10 55	—	7 00	Ar St. Paul.....	Lv	9 10	—	—	8 15			
			C. B. & Q. R. R.								
11 45	—	7 15	Lv St. Paul.....	Ar	8 40	—	—	7 30			
7 55	—	2 00	Ar Chicago.....	Lv	2 00	—	—	11 10			
9 45			S. P. & S. Ry.			7 15			6 00		
6 10	—	10 25	Lv Portland.....	Ar	11 59	—	—	9 45			
402 Daily			SEATTLE- TACOMA- PORTLAND			457 Daily			459 Daily	407 Daily	401 Daily
11 45	5 00	12 30	8 20	Lv Seattle... Ar	1 00	5 30	9 30	6 15			
1 15	6 02	1 26	9 16	Lv Tacoma... Lv	12 05	4 35	8 33	4 55			
5 45	9 15	4 30	12 20	Ar Portland... Lv	9 00	1 30	5 30	11 45			
19 Daily			CALIFORNIA Southern Pacific			12 Daily			20 Daily	10 Daily	
10 15	4 45	7 45	Lv Portland.....	Ar	8 15	7 55	11 25				
7 40	8 35	10 55	Ar Oakland Pier.....	Lv	4 38	8 35	8 05				
9 00	9 10	11 30	Ar San Francisco.....	Lv	4 00	8 00	7 30				
—	7 55	10 50	Ar Los Angeles.....	Lv	6 50	—	6 10				

Time from 12:01 midnight to 12:00 noon shown in light face type.

Time from 12:01 noon to 12:00 midnight shown in bold face type.

Train No. 358 connects with the Empire Builder and Western Star from the East.  
Train No. 359 connects with the Eastbound Empire Builder leaving Everett at 4:18 p.m.

Train No. 361 connects with the Eastbound Western Star leaving Everett at 11:10 p.m.

— Conditional Stop

S. T. THORSON, General Agent Passenger Department  
Great Northern Railway, Fourth Av. at Union St.,  
Seattle 1, Washington

HARRY CLARK, General Agent Passenger Department,  
Great Northern Railway, 787 W. Georgia St.,  
Vancouver 1, B. C.

PETHARD & DAWSON, Ltd., Travel Agents,  
734 Yates Street, Victoria, B. C.  
P. G. HOLMES  
Passenger Traffic Manager,  
Great Northern Railway, St. Paul 1, Minnesota

Convenient Connections  
with

## EMPIRE BUILDER WESTERN STAR

Southbound INTERNATIONALS connect at Everett, Washington, and Seattle (King Street Station) with the EMPIRE BUILDER and WESTERN STAR for Spokane, Minneapolis, St. Paul and Chicago. Connections in Chicago for Windsor, Toronto, Montreal and Eastern U. S. cities.

Connections at Seattle for Tacoma, Portland and Spokane.

### FOOD AND BEVERAGES

Dining car service is available in the cafe sections of northbound INTERNATIONALS 360 and 362, and southbound INTERNATIONALS 359 and 361. Limited breakfast service is provided on INTERNATIONAL trains 357 and 358.

### LOW DAILY FARES

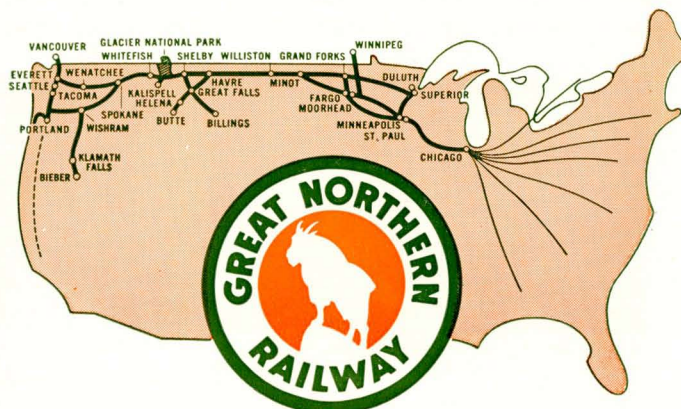
Special low coach fares are in effect on the INTERNATIONALS between Vancouver, British Columbia, and Seattle, Washington, and all intermediate stations. There is no tax on tickets purchased in Canada.

### FAMILY TRAVEL FARES

When the head of the family pays full fare, all others pay only half fare. Good Mondays, Tuesdays, Wednesdays and Thursdays. Children under 5 free.

### BAGGAGE INSPECTION

A customs room aboard the INTERNATIONALS for the inspection of baggage by U.S. and Canadian Customs officers helps speed your trip across the border.

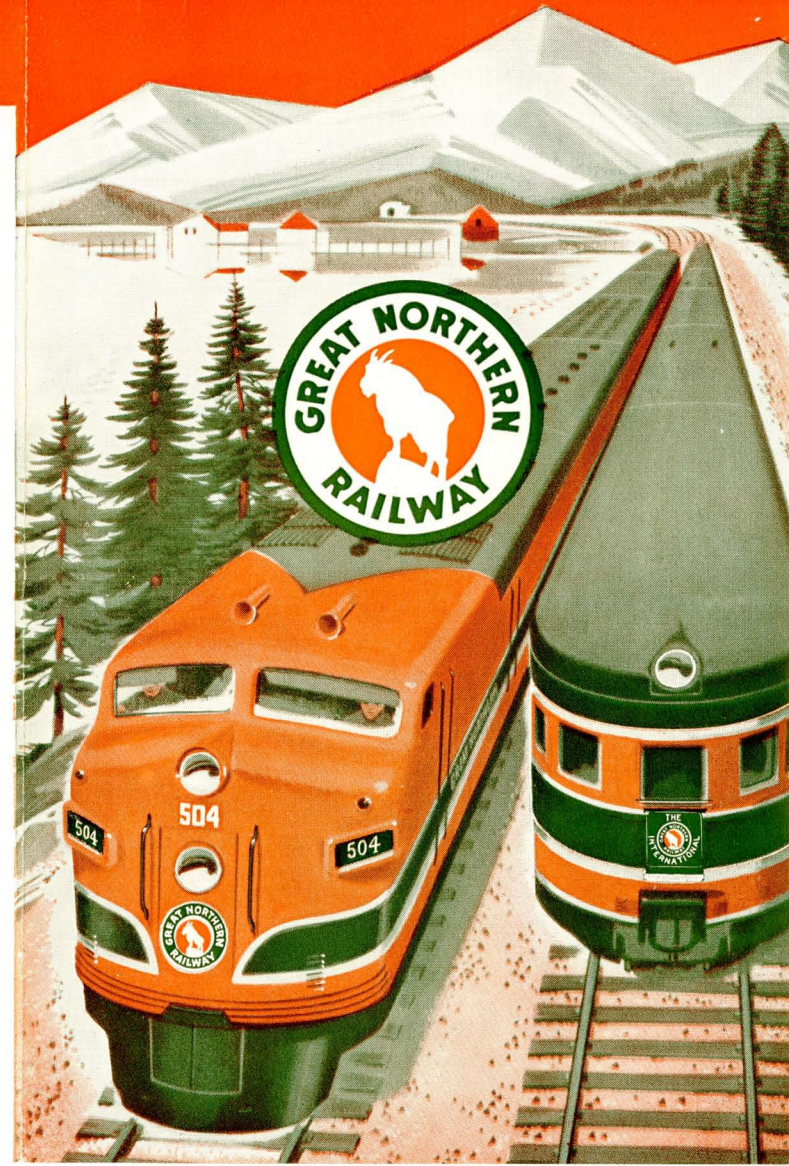


Go Great...Go Streamlined

# Internationals

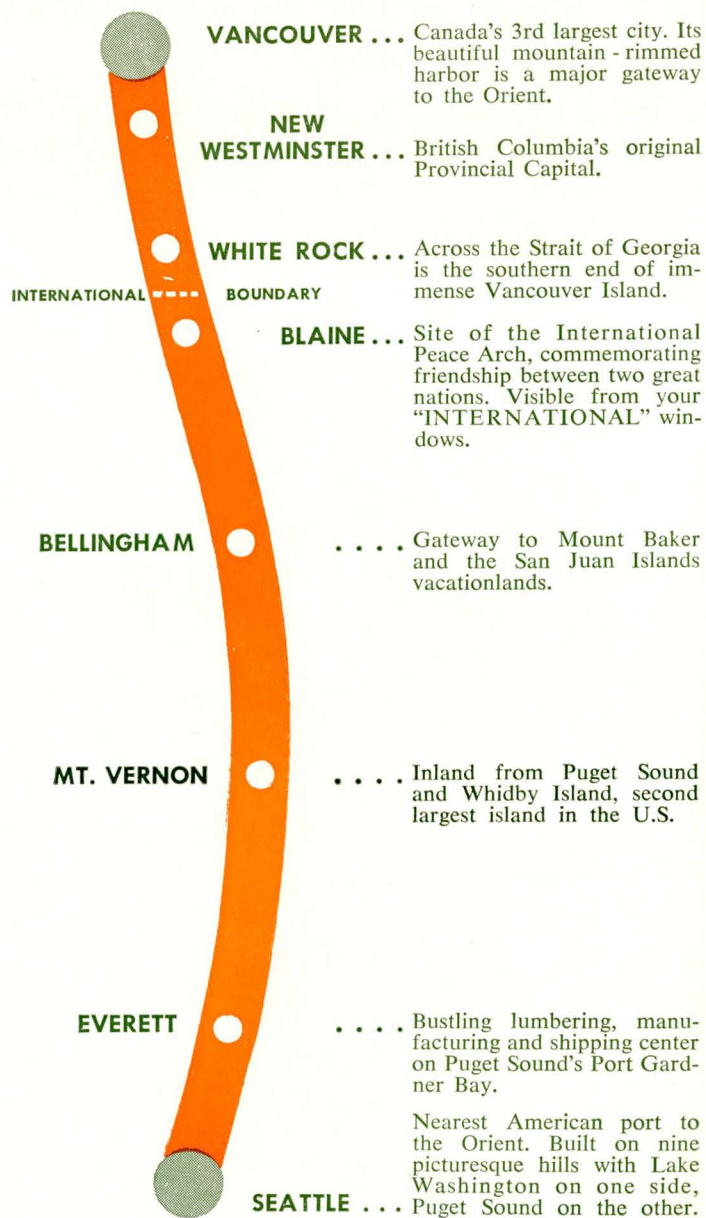
Between

SEATTLE • VANCOUVER  
Washington British Columbia

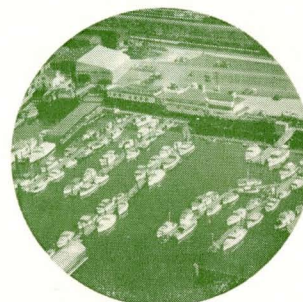




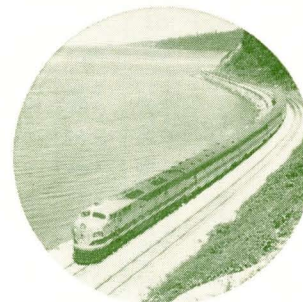
# Scenery's Great...Comfort's Great on the **INTERNATIONALS**



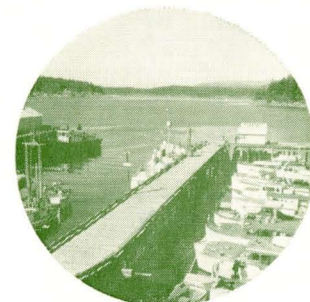
*MOUNT RAINIER forms a backdrop for Seattle, largest city in the Pacific Northwest.*



*THE YACHT HARBOR at Everett, thriving industrial city and third port in size on Puget Sound.*



*PUGET SOUND sparkles for 154 scenic miles along Great Northern's sea level route.*



*FRIDAY HARBOR in the San Juan Islands. Pleasure craft stop here for customs inspections.*



*SNOW-CAPPED Mount Shuksan in the Mount Baker National Forest recreational area.*



*THE IMPOSING Peace Arch stands astride the Canadian-U.S. border at Blaine, Washington.*



*VANCOUVER, queen city of British Columbia, Canada's gateway to Alaska and the Orient.*



*VICTORIA on Vancouver Island, capital of British Columbia. A city of old world charm.*

## Along Evergreen Shores

For 154 spectacular miles, Great Northern's streamlined **INTERNATIONALS** glide through North America's most varied scenery. You see Puget Sound as you wind along its bays and inlets . . . green and fertile valley

farmlands . . . endless acres of virgin timber . . . thriving cities . . . picturesque villages . . . the mighty Cascades and Olympics. Few other rides show you *so much in so short a distance.*



*RELAXING'S GREAT in the deep, foam-rubber seats of the **INTERNATIONALS'** smooth streamlined coaches.*



*FOOD'S GREAT on the **INTERNATIONALS'**—world-famous, and at reasonable cost, in keeping with Great Northern tradition.*



*SCENERY'S GREAT from the wide picture windows of the **INTERNATIONALS'** luxurious parlor lounges.*