



See Glacier Park in ease and comfort. Luxurious motor coaches like these carry you along wide, safe highways with frequent stops for better examination of points of special interest. Bring your camera!



Motor coaches operate daily over Logan pass highway.

COMPLETE AND MAIL THIS COUPON

For additional information to V. J. Kenny, Passenger Traffic Manager, 175 East Fourth Street, St. Paul 1, Minnesota, or to your nearest Great Northern travel representative.

Please send me information concerning vacations in the regions I have checked:

- ☐ Glacier National Park.
- ☐ Glacier Park, Waterton Lakes Park and Canadian Rockies.
- ☐ Glacier Park, Yellowstone Park, and Dude Ranches.
- ☐ Glacier Park and the Pacific Northwest.
- ☐ Glacier Park and California.

Name _____

Street Address _____

City _____ Zone No. _____ State _____

Form 6011-A 5-47 Printed in U. S. A.



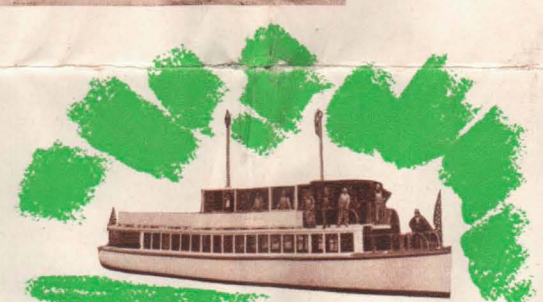
Motor Coach Tours

Regardless of the amount of time you have to spend in Glacier National Park, there is a regularly scheduled low-cost all-expense motor coach tour available that will take you through the best scenery in the Park.

The tours are one, two, three days or longer. They include big, comfortable sight-seeing buses, lake launches, and park hotels for meals and lodging. The three-day tour includes Prince of Wales Hotel in Waterton Lakes National Park in the Canadian Rockies.

Train passengers having but one or a few days to spare for a Glacier Park visit should not miss the opportunities offered by these tours.

Westbound passengers detrain at Glacier Park Station and retrain at Belton. East-bound passengers leave the train at Belton and continue their rail journey from Glacier Park Station.



As a part of any one of the West or East-bound all-expense tours you will cruise Two-Medicine Lake on a large motor-launch. From this vantage point you will come into the very shadows of some of the mountains that tower over the lake. Along the lake shore you'll see immense beds of wild flowers growing in colorful profusion.



Around a curve on Going-to-the-Sun Highway. Mount Reynolds looms with majestic splendor. Every curve brings a new and more exciting vista before your eyes.

The Oriental Limited



This fine, dependable train, providing economical, comfortable coaches and tourist sleeping cars, Standard Pullmans, observation-lounge car and dining car, will stop at Glacier Park station, eastern rail entrance, and Belton, western rail entrance, to Glacier-Waterton Lakes National Parks, during the Park season, June 15 to September 15.

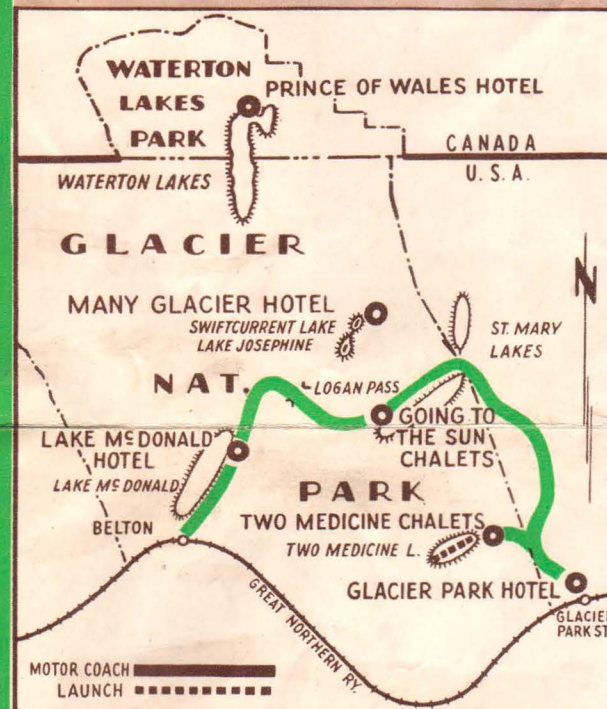
LOW COST All-Expense STOP-OFF TOURS

Tours May Begin at Either East or West Railway Entrances

ONE-DAY TOUR

Daily June 15 to Sept. 14
All Expense \$22.26
Including Tax

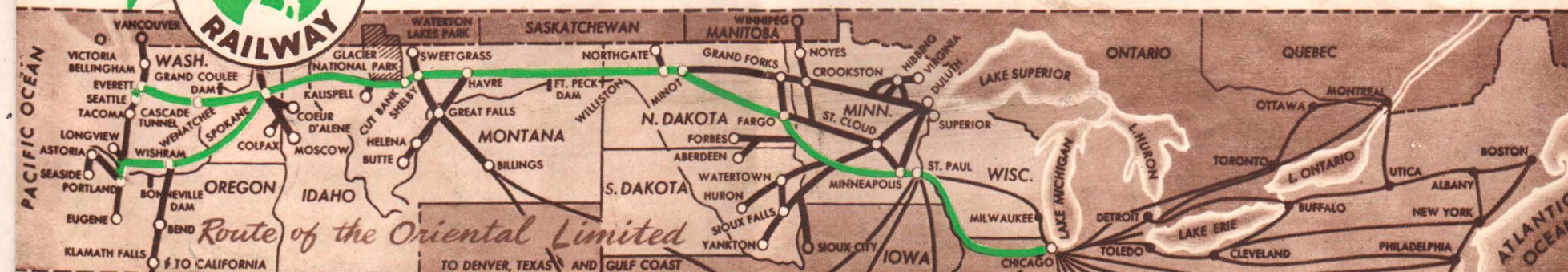
TOUR INCLUDES motor coach transportation, launch fare (Two Medicine Lake), hotel accommodations (four meals and one night's lodging) in rooms without bath. Rooms with bath may be obtained if reserved in advance, or if available after arrival, upon payment of the difference in rates.



SO EASY TO REACH!

GLACIER NATIONAL PARK, "Where the American and Canadian Rockies Merge Their Beauty", is the only National Park in the U.S. on the main line of a transcontinental railway — the GREAT NORTHERN.

MONTANA'S GLACIER NATIONAL PARK fits perfectly into any vacation plan that includes Pacific Northwest, California or Canadian Rockies.

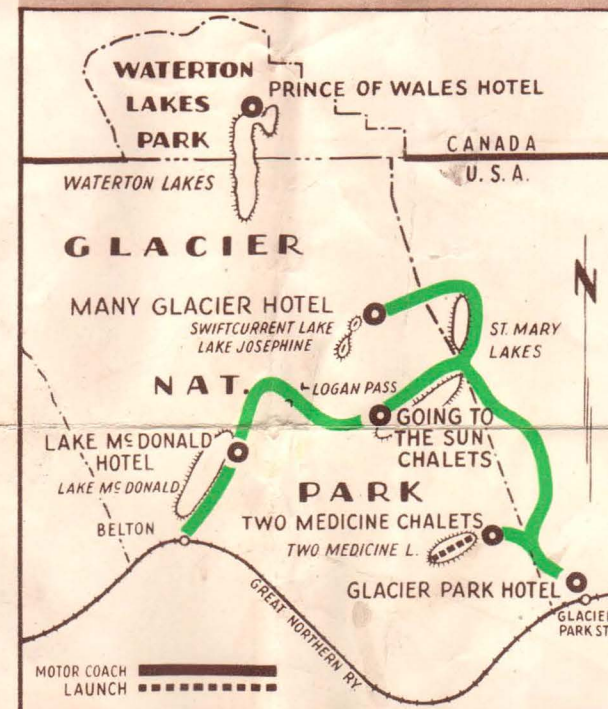


The Glacier Park Company operates, independently, all the hotels, chalets, motor cabins, coffee shops and launches on St. Mary and Waterton Lakes, as well as the Prince of Wales Hotel in Waterton Lakes National Park, Alberta, Canada. All other facilities are operated by independent concessionaires and the Great Northern Railway and the Glacier Park Company in issuing and selling tickets for all services in Glacier National Park and Waterton Lakes National Park act only as agents for the parties or concessionaires providing the service.

TWO-DAY TOUR

Daily June 15 to Sept. 13
All Expense \$33.97
Including Tax

TOUR INCLUDES motor coach transportation, launch fare (Two Medicine Lake only), hotel accommodations (seven meals and two nights' lodging) in rooms without bath. Rooms with bath may be obtained if reserved in advance, or if available after arrival, upon payment of the difference in rates.



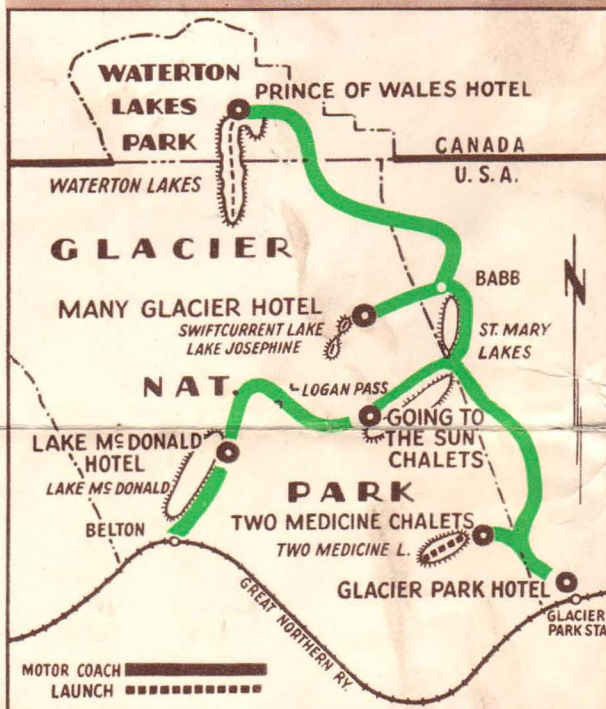
WRITE FOR TRAVEL INFORMATION, OR CALL IN PERSON ON THE NEAREST GREAT NORTHERN REPRESENTATIVE

BOSTON, 16, MASS.—Room 7, Little Building, 80 Boylston Street. Phone: Liberty 1639. T. E. Carroll, New England Passenger Agent.
BUFFALO, 3, N. Y.—696 Elliott Square. Phone: Washington 1020. M. A. Knos, General Agent.
CHICAGO, 5, ILL.—142 South Clark Street. Phone: Randolph 6700. S. M. Farrell, General Agent, Passenger Department.
CINCINNATI, 2, O.—1008 Traction Building. Phone: Main 3643. H. H. Knoke, General Agent.
CLEVELAND, 14, O.—1243 Union Commerce Building. Phone: Cherry 7137-7138. F. L. Cobb, District Passenger Agent.
DALLAS, 1, TEX.—1206 Kirby Building. Phone: Riverside 6787. Geo. W. Ploudre, General Agent.
DENVER, 2, COLO.—601 Railway Exchange Bldg. Phone: Cherry 3477. C. C. Conrad, General Agent.
DES MOINES, 9, IA.—305 Equitable Building. Phone: 3-7025. O. W. Pierce, District Passenger Agent.
DETROIT, 26, MICH.—5726 Lafayette Building. 149 Michigan Avenue. Phone: Randolph 8398-8399. H. G. Schuette, General Agent.
DULUTH, 2, MINN.—302 West Superior Street. Phone: Melrose 4491. E. C. LeRoy, City Passenger Agent.
FARGO, N. D.—701-2 Black Building. Phone: 6614. A. M. Brandvik, General Agent, M. Urbus, Ticket Agent.
GRAND FORKS, N. D.—Phone 1300. Omer Hall, Ticket Agent.
KANSAS CITY, 6, MO.—814-15 Dwight Building. Phone: Victor 3832. C. A. Rand, General Agent, Passenger Department.
LOS ANGELES, 14, CALIF.—918-19 Associated Realty Building. Phone: Vandike 1201. W. E. McCormick, General Agent.
MILWAUKEE, 3, WIS.—814 Marquette Building. Phone: Marquette 1751. Beni. C. Culbertson, General Agent.
MINNEAPOLIS, 2, MINN.—600 Marquette Avenue. Phone: Atlantic 1267. C. M. Cornelius, General Agent, Passenger Department.

THREE-DAY TOUR

Daily June 15 to Sept. 12
All Expense \$50.56
Including Tax

TOUR INCLUDES motor coach transportation, launch fare (Two Medicine Lake only), hotel accommodations (ten meals and three nights' lodging) in rooms without bath in Glacier Park, Lake McDonald, Many Glacier Hotels; with bath in Prince of Wales Hotel, Canada. Rooms with bath on entire tour may be obtained if reserved in advance, or if available after arrival, upon payment of the difference in rates.

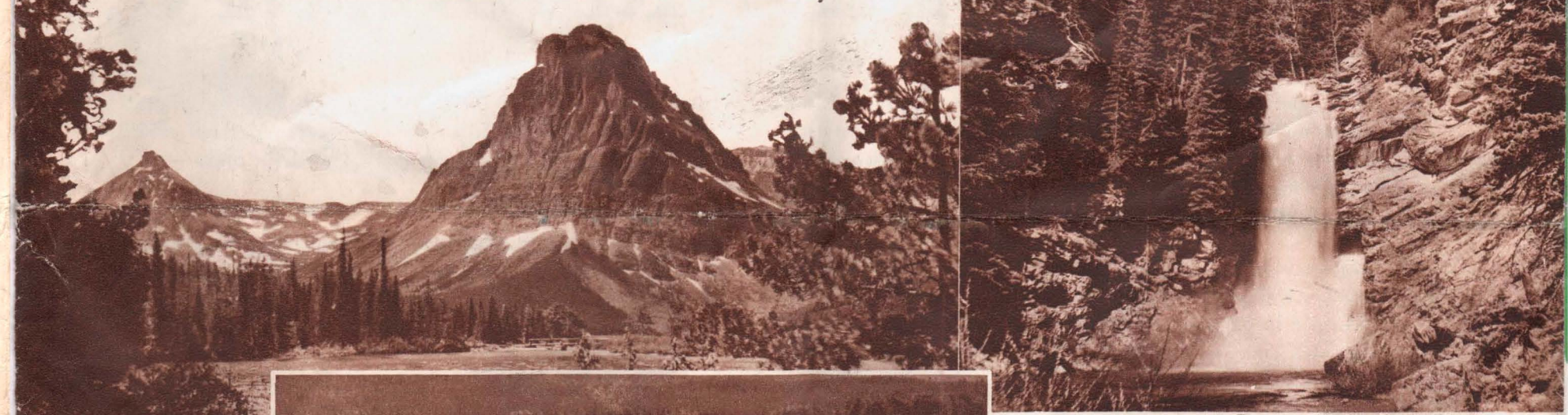


"HOWDY PARDNER
I'LL BE SEEING YOU IN

Glacier
Park"



America's Most Spectacular Vacation Land...On the
Main Transcontinental Line of Great Northern Railway



Trick Falls thunders in a sylvan setting.

You'll never forget the majestic snow-capped American and Canadian Rockies.

You'll swim, boat, go fishing in the hundreds of lakes and streams.

"Corral a Vacation"



Gateway to
Glacier National Park
Waterton Lakes Park

Nearby Parks in Canadian Rockies



Western Adventure

You take a last tug at the latigo to tighten the cinch, swing easily into the saddle, the cowboy guide waves his hand forward, and, with the sound of creaking leather mingling with exuberant shouts, you are off on another exciting western adventure in Glacier National Park in the Montana Rockies. You start doing instead of dreaming, living instead of just existing, when you become part of a scene like the one above. From that point on you are riding, hiking, motoring, boating, fishing, swimming your way through an endless panorama of thrilling experiences that will take your breath away with their memory in years to come.

"All West and over a Mile High," Glacier National Park is a magnificent part of America the Beautiful. Everything in it, from its craggy peaks, home of the sure-footed mountain goat, to its trout-filled crystal lakes and streams, is for your special vacation enjoyment. From the moment you step-off the Great Northern's Oriental Limited at either the West or East entrance, you'll be champing to plunge into the dozens of activities that await your participation. In this folder we have tried to picture a few of

Glacier Park's wonders but no printed page can convey the thrill that will be yours when you discover for yourself each vista, each adventure that this tremendous mountain playground has to offer.

It is so simple to see and do things in Glacier Park. Motor coaches tour the highways, taking you right through the heart of the park via spectacular Going-to-the-Sun Highway. Well-marked trails pierce the vastness beyond the highway, making it possible for you to personally unlock the innermost secrets of this vast wonderland. Sight-seeing motor launches carry you up and down the larger lakes.

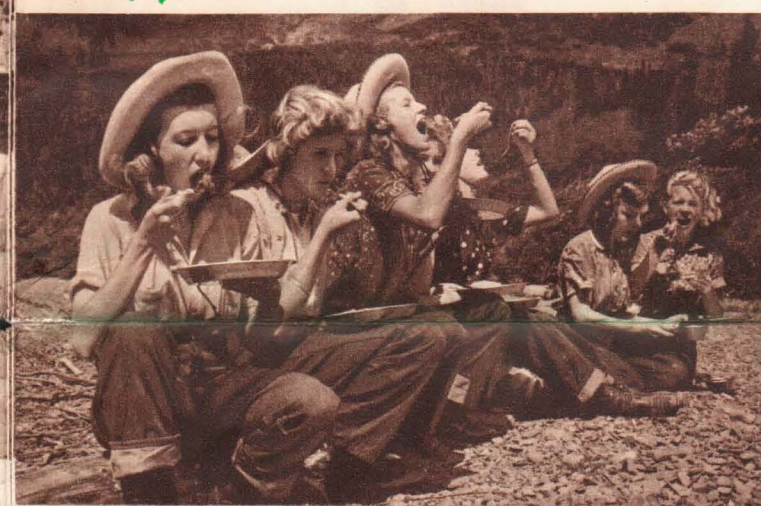
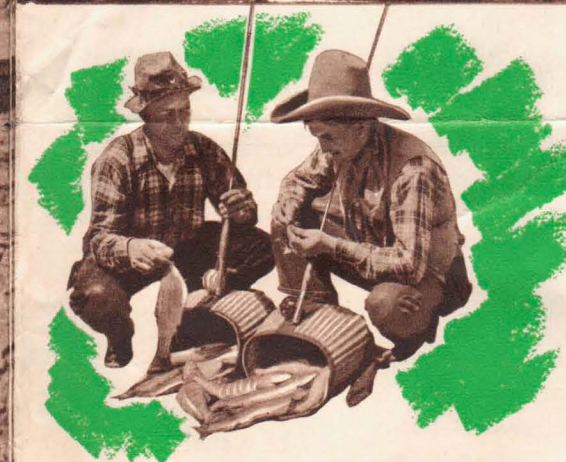
Facilities range from picturesque hotels to out-of-the-way chalets. Accommodations and meals are of the best. You can make any one of the four hotels your "base of operations" as you fish, play golf, hike, ride, attend Blackfeet Indian ceremonies, stalk wild game with a camera, or just relax in the invigorating mountain atmosphere.

Now is the time to plan . . . this is the year to go . . . there's real Western Adventure waiting for you in Glacier National Park!

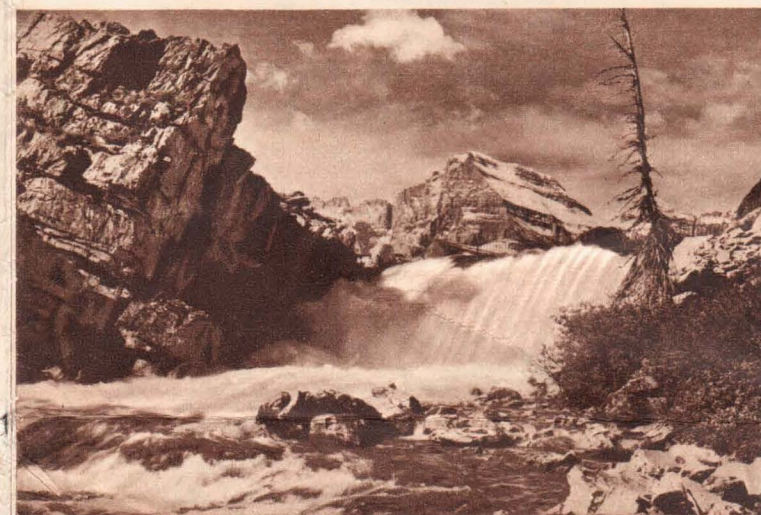


Wet a Line in the Finest Trout Waters

Glacier Park's streams and lakes offer a challenge to either the novice or the expert. Its trout strike with the swiftness and impact of a bullet, taking your breath away with their fighting spirit. Thousands of enthusiasts have visited Glacier Park for no other reason than to match wits and skill with these scrappy beauties.



Come and get it! Western "grub" along the trail.



Crashing streams play a symphony all of their own.

Nine sporty holes of golf at Glacier Park Hotel.



On the trail towards majestic Mount Jackson.

Exciting Trips, Indian Ceremonials, Campfire Parties

Walk miles along a lake, and through towering forests . . . or take an adventuresome trail trip, complete with horses, guides, and pack equipment back into the innermost wilderness. Wade through acres of colorful wildflowers in full bloom. Breathe deeply of the pure mountain air as you gaze from high across miles of soaring peaks with blue lakes nestled in the deep valleys below. Discover for yourself the secret of famed western friendliness around a blazing campfire.

Yes, in Glacier Park you'll have an opportunity to study regal Blackfeet Indians in their natural setting. You'll watch them perform ancient dances and other ceremonials in full dress costume.



Wildlife abounds in Glacier Park. Majestic Bighorn sheep find this rugged country exactly to their liking.

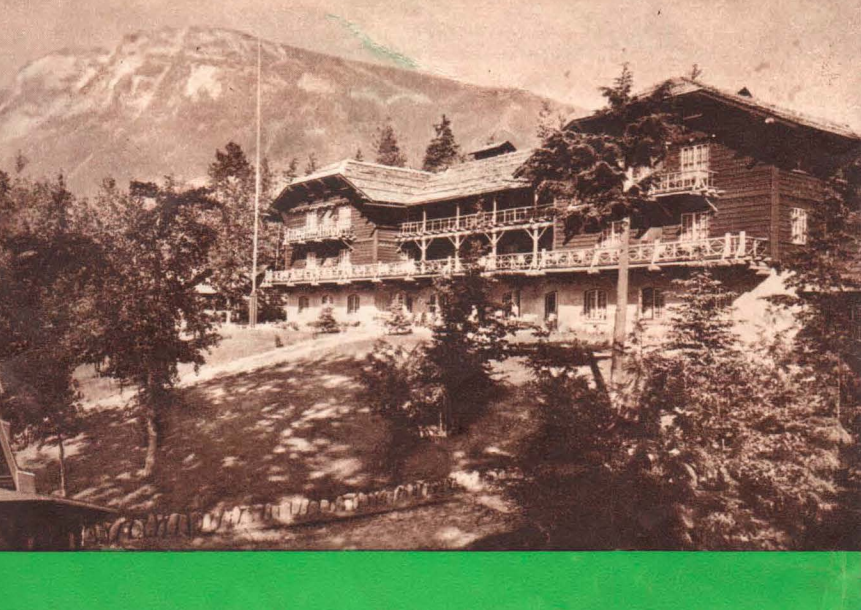


A sweeping approach says "Welcome to Glacier Park Hotel!"

Many Glacier Hotel is nearest to the center of the park.



Prince of Wales Hotel, in Waterton Lakes National Park offers the vacationer facilities for every activity.



Lake McDonald Hotel is located a few miles from the western entrance, and on the shore of Lake McDonald, largest lake in the park.

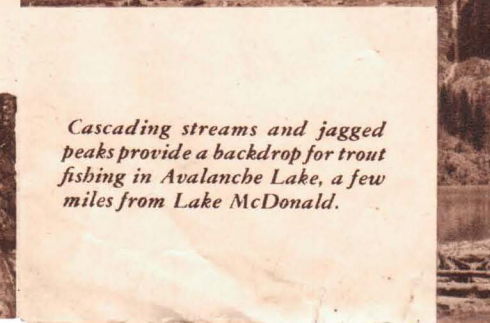
Four Picturesque Hotels
Glacier Park Many Glacier Prince of Wales Lake McDonald
Three Mountain Chalets
Two Medicine Granite Park Sperry
for your Rest and Relaxation



"Dudes" gather at Two Medicine Chalet to watch a saddle horse trip get under way.



Looking towards the Livingston Range from Granite Park Chalet.



Cascading streams and jagged peaks provide a backdrop for trout fishing in Avalanche Lake, a few miles from Lake McDonald.



Sperry Chalet overlooks an area of supreme grandeur.