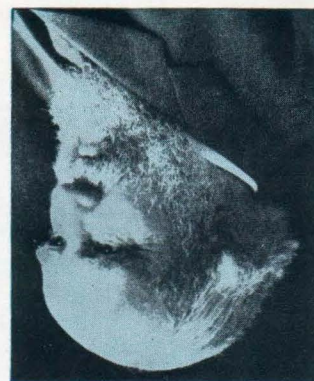


JAMES J. HILL came to be known as the Empire Builder. And well did he deserve that title. It was Hill who punched through the transcontinental line of Great Northern, and to populate his new rail line he urged people to settle the potentially rich areas stretching between St. Paul and Seattle. Then he worked diligently and imaginatively to help them gain mastery over nature—showing them how to improve their land, how to improve their farming practices.

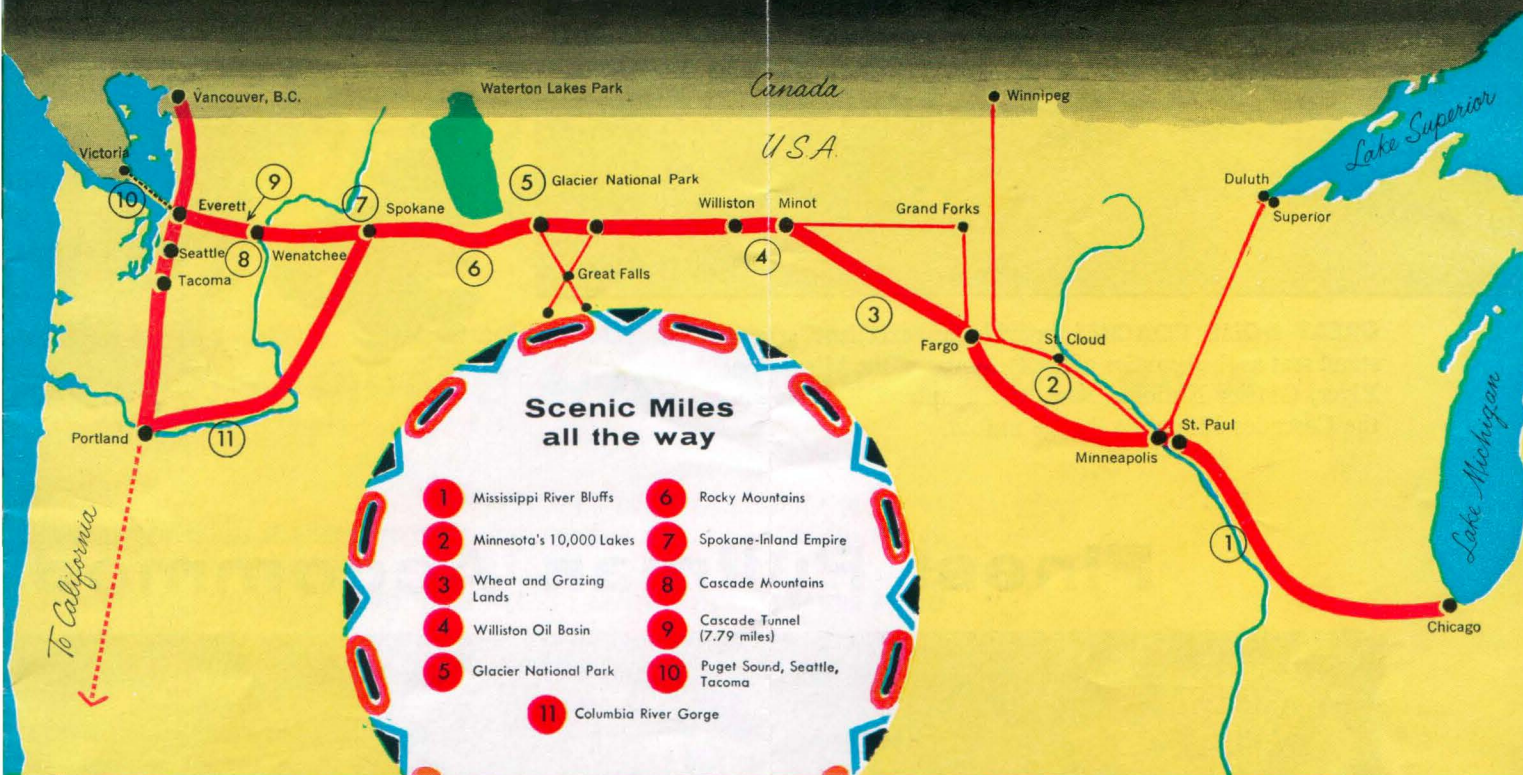


For nearly thirty years the EMPIRE BUILDER has stood for the finest in rail transportation. The present fleet of five streamlined trains, plying daily across the top of the nation, is the third generation to bear this famous name. Offering the most luxurious accommodations at standard railway fares, the EMPIRE BUILDER continues to reflect the pioneering vigor of the founder of Great Northern Railway. Latest addition to this train... Great Domes.

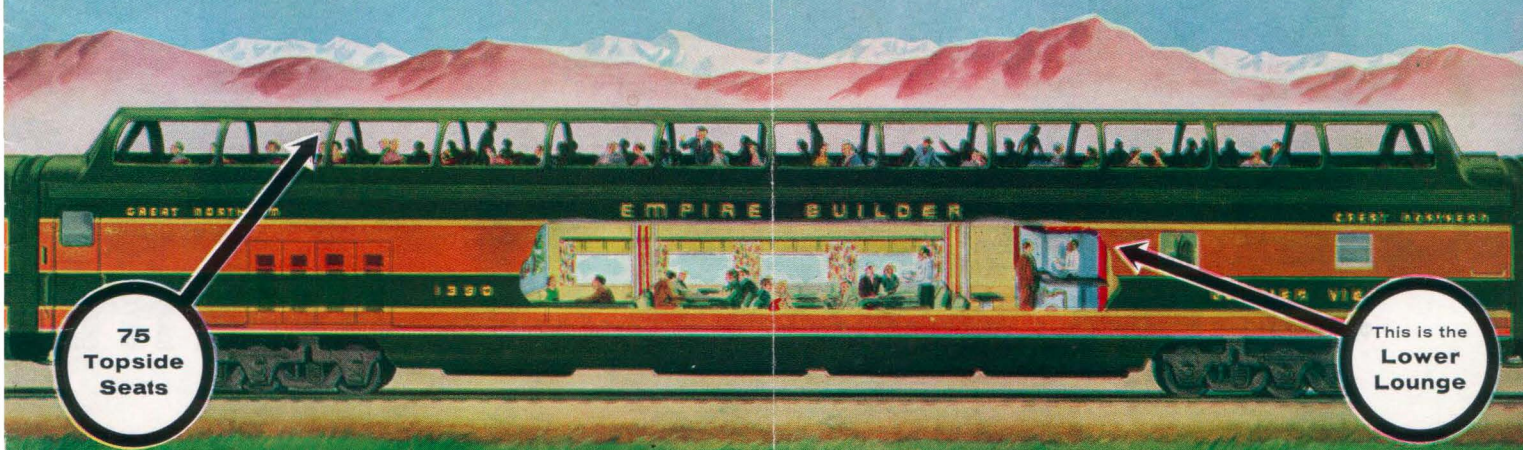
A GREAT TRAIN IN THE TRADITION OF A TOWERING
FIGURE OF AMERICAN RAILROADING—JAMES J. HILL

EMPIRE BUILDER

EMPIRE BUILDER every day, each way between
Chicago and Seattle - Portland via St. Paul, Minneapolis and Spokane



Here's the EMPIRE BUILDER'S
Double-deck Dome-Lounge Car



**EMPIRE
BUILDER**

Fastest and Finest
between
Chicago and Seattle

OTHER FINE GREAT NORTHERN TRAINS

STREAMLINED WESTERN STAR

Sleek companion streamliner to the Empire Builder. Daily each way between Chicago and Seattle-Portland via St. Paul, Minneapolis, Grand Forks, Great Falls and Spokane. Western Star stops at Glacier National Park daily June 15-September 10.

STREAMLINED INTERNATIONALS

Three departures each way every day from Seattle, Washington, and Vancouver, B.C.

STREAMLINED RED RIVER

Daily round trip between Grand Forks-Fargo, North Dakota, and Minneapolis-St. Paul.

WINNIPEG LIMITED

Daily overnight in both directions between St. Paul, Minneapolis and Winnipeg, Manitoba.

THE GOPHER — THE BADGER

Fast daily afternoon and morning trains each way between St. Paul-Minneapolis and Superior-Duluth.

THE CASCADIAN

Daily each way between Seattle, Wenatchee and Spokane, Washington.

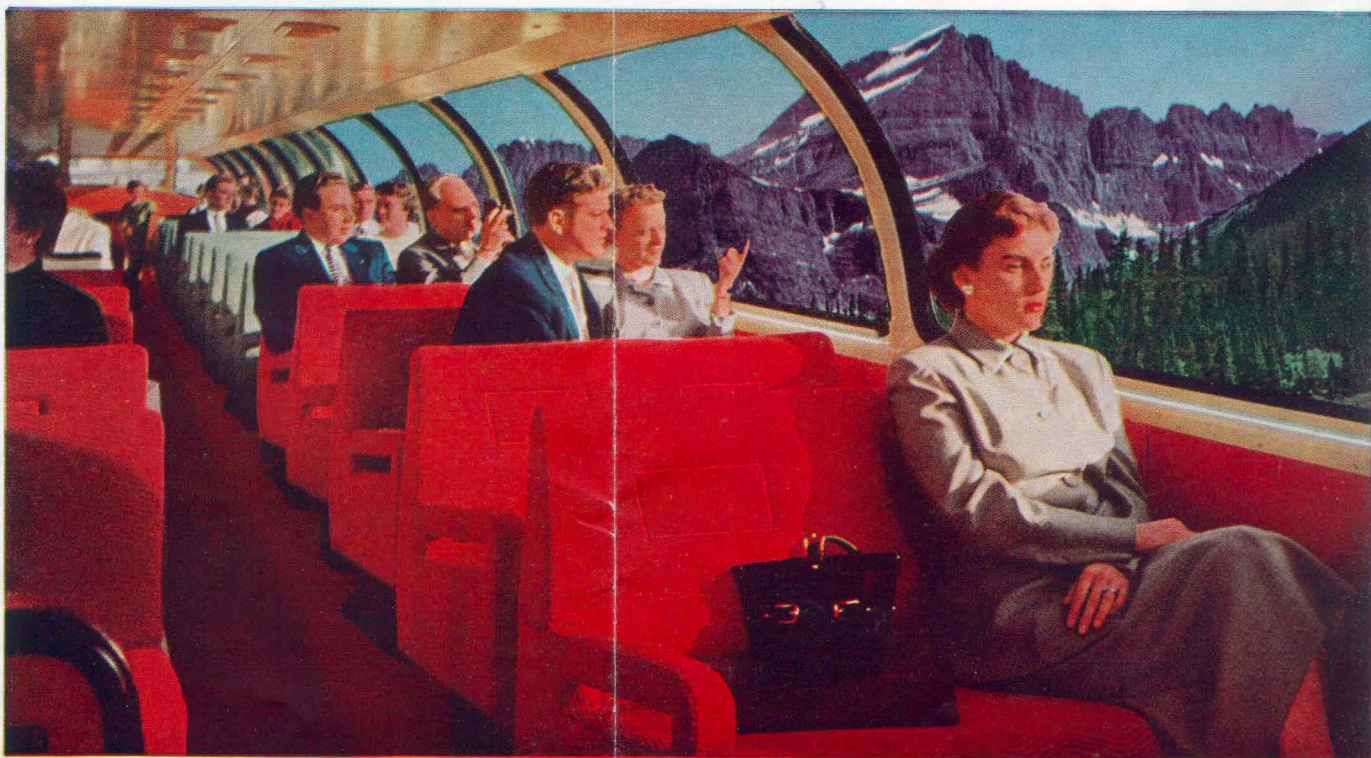
For information or reservations call or write Great Northern representatives located in principal cities of the U.S. and Canada—or write:—

P. G. Holmes
Passenger Traffic Manager
Great Northern Railway, St. Paul 1, Minn.

Form 6024-A-12-58 Printed in U.S.A.

**GREAT
DOMES**
on Great Northern's
Greatest Train





DOMES SEATS FOR THE ENTIRE LENGTH OF A CAR! Here's the Great Dome with 75 seats on the top deck, angled to permit easy viewing of the exciting terrain through which the Empire Builder passes between Chicago and the Pacific Northwest. For Pullman passengers.

More Dome Seats • More Scenic Miles
on Great Northern's Incomparable

Empire Builder



GREAT DOME COACHES provide an excellent grandstand seat as the beauties of the Palisades of the Mississippi River, Glacier National Park, the Montana Rockies and the Cascades Mountain Range unfold.



LOUNGE SECTION of the top deck of the full-length Great Dome is a cozy rendezvous where Pullman travelers may enjoy their leisure hours. Always a view in sight. Air-conditioned the year around.



BEVERAGE BAR on the lower deck of the full-length Great Dome serves a wide variety of refreshing drinks. Informal Western decor invites travelers to take it easy as they cross the country in style.



RANCH CAR is a unique coffee shop, serving delicious and inexpensive meals—and it has a lounge section where passengers while away the hours and enjoy refreshing beverages. The entire car is decorated in Western style, with branding irons, pinto-leather seats, and other ranch atmosphere. Absolutely unique!

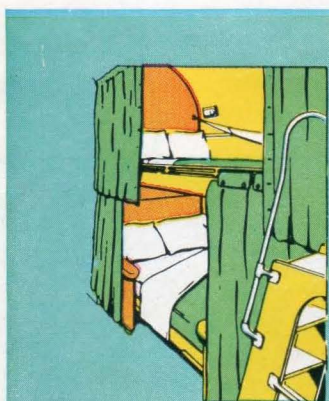


RECLINING SEATS, with adjustable leg rests, in the lower level of coach domes make your ride a distinct pleasure. All seats reserved. Colorful, modern, clean, comfortable!



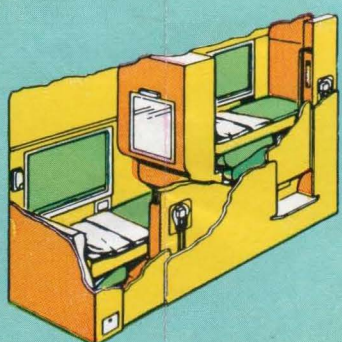
DINING'S A PLEASURE aboard the Empire Builder. The dining car serves meals fit for a king. Your dinner is by reservation, so waiting's never a problem.

Finest Pullman Accommodations on the EMPIRE BUILDER



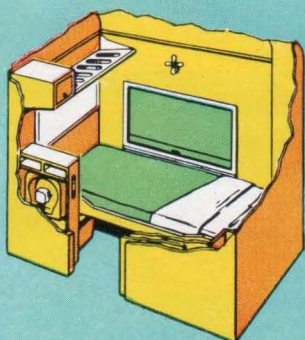
UPPER AND LOWER BERTHS

A limited number of upper and lower berth sections are available. Foam rubber mattresses. Commodious washrooms. The thrifty way to go.



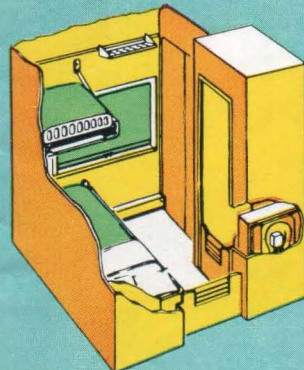
DUPLEX-ROOMETTES

Your own private room for only 10% more than a lower berth! Long beds pull out or down at night. Complete toilet facilities. Heat and ventilation controls.



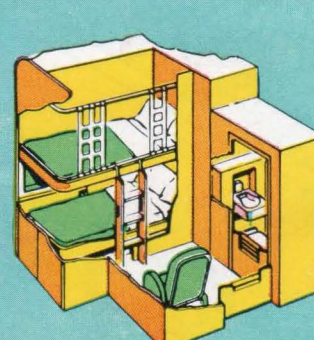
ROOMETTES

A self-contained home on wheels. Your bed pulls down from the wall. All toilet and personal facilities. Comfortable arm-rest seat. Heat and ventilation controls.



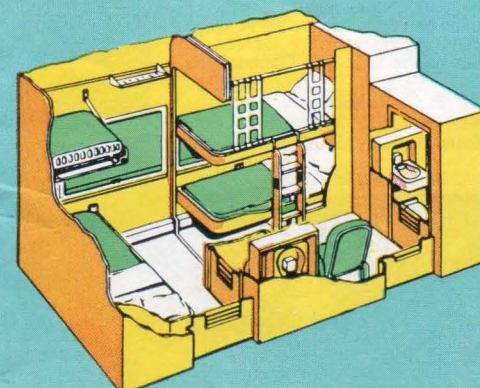
DOUBLE BEDROOMS

For one or two persons. Sofa by day converts into a bed, and second berth appears from ceiling. Complete toilet facilities. Heat and ventilation controls.



COMPARTMENTS

Superb accommodation for one or two persons, with comfortable sofa seat, plus extra chair. Enclosed toilet facilities. Heat and ventilation controls.



COMPARTMENT-BEDROOM SUITE

A spacious living room by day and two private rooms by night is made by combining a bedroom and compartment. Toilet facilities are enclosed.

• Incomparable Travel **EMPIRE BUILDER** Incomparable Luxury •