

More Dome Seats for More Scenic Miles on the Incomparable **Empire Builder**



Lounge Section on the top deck of the full-length Great Dome car has tables for cards or games. Here, Pullman passengers enjoy friendly conversation and magnificent views.



Beverage Lounge on the full length Great Dome's lower deck affords many pleasant hours en route. A wide variety of refreshing drinks are served. Tables for games and friendly chats.



Great Dome Coaches provide excellent grandstand seats as the splendor of the Cascades, Montana Rockies, great plains and Mississippi Palisades passes by . . . up close.



Lower Level of each coach dome is colorfully decorated with art forms of the Pacific North Coast Indians. Comfortable reclining leg-rest seats are reserved, make sleep come quickly.

Diner on the Western Star is famed for its wide selection of tempting foods, served in regal fashion. Dinner is by reservation, so there's no tiresome waiting to be seated.



Roomy Coach Seats have reclining backs, adjustable leg-rests. Only 48 seats to a car, so you have lots of leg-room. Convenient luggage racks overhead. Spacious dressing rooms.



Coffee Shop Car on the Western Star features delicious meals at budget prices. Both table and counter service. Refreshing beverages are also served during the day and evening.



Lounge Car for Pullman passengers. Easy-going atmosphere bespeaks hospitality as warm and friendly as your own living room. Great place to relax and enjoy miles of scenery.



Great Food, Great Luxury, Great Travel on Great Northern's **Western Star**

Great Northern Railway Travel Offices Pacific Northwest

BELLINGHAM, WASH. 212 Kulshan Bldg., Phone: 2111
BREMERTON, WASH. 228 First St., Phone: 3-1401
EUGENE, ORE. 115 Roberts Bldg., 338 West 11th Ave., Phone: Diamond 3-5021
EVERETT, WASH. Great Northern Station, Phone: Bayview 3101
KLAMATH FALLS, ORE. Great Northern Station, Phone: Tuxedo 4-4101
NELSON, B. C. 557 Ward St., Phone: 57
PORTLAND 5, ORE. 607 S.W. Washington St., Phone: Capitol 3-7273
SEATTLE 1, WASH. 4th Ave at Union St., Phone: Seneca 1900
SPOKANE 4, WASH. Davenport Hotel, Phone: Madison 4-5141
TACOMA 2, WASH. 116 South Ninth St., Phone: Market 7-0113
VANCOUVER, B.C. 787 W. Georgia St., Phone: Tatlow 4374
VICTORIA, B.C. 734 Yates St., Phone: 2-2822
WENATCHEE, WASH. Great Northern Office Bldg., Phone: Normandy 2-5907

N. D. KELLER
General Passenger Agent
Seattle 1, Washington

P. G. HOLMES
Passenger Traffic Manager
St. Paul 1, Minnesota

Great Northern Railway Travel Offices California

SAN FRANCISCO 5, CALIF. 679 Market St., Phone: Sutter 1-6051
OAKLAND 12, CALIF. 811 Financial Center Bldg., Phone: Templebar 2-7672
LOS ANGELES 14, CALIF. Room 317, Five Ten West Sixth St. Bldg., Phone: Madison 9-1473
SACRAMENTO 14, CALIF. 223 Forum Bldg., Phone: Gilbert 2-3376

A. L. SCOTT
Assistant General Passenger Agent
San Francisco 5, Calif.

P. G. HOLMES
Passenger Traffic Manager
St. Paul 1, Minnesota



GO **EAST** via **Glacier National Park**

to **CHICAGO** and the great
and historic cities of Eastern United States



on the incomparable
EMPIRE BUILDER

Great Northern's greatest train offers the ultimate in travel luxury—more dome seats for more scenic miles. Full length Dome-Lounge. Superb meals in either the diner or the unique Ranch Car. Reserved reclining coach seats. Deluxe Pullman sleeping accommodations.

on the streamlined
WESTERN STAR

Offering virtually the same accommodations, this modern streamliner serves more cities along Great Northern's route than its sister train, the Empire Builder. From June 15 through September 10, it stops at both eastern and western entrances to Glacier National Park in the Montana Rockies.

Both trains go each way every day between
Seattle-Portland and Chicago via Spokane,
Minneapolis and St. Paul.

Go Great Northern and Stop Over in Glacier National Park in the Montana Rockies

Pack the most in vacation thrills into your trip east. Go Great Northern via Glacier National Park and take in the nation's most spectacular scenery. From Seattle, you cross the snow-capped Cascades . . . the Inland Empire. From Portland, you marvel at the breathlessly beautiful Columbia River Gorge.

Then, on to Glacier Park . . . crowning glory of the Rockies. In Glacier, you can fish for fighting trout . . . hike or take saddle trips up majestic mountain trails. Golf, swimming, lake cruises and open-top motor coach trips are among the many other activities in this unspoiled vastness of natural beauty high in Montana's glacial Rockies.

The Empire Builder and the Western Star follow Glacier's southern boundary; the Western Star stops at both western and eastern entrances from June 15 through September 10 . . . meets you again to take you on to Chicago, and the great cities of Eastern United States. It's a trip unmatched for scenic splendor . . . for close-up views of America at its greatest.



Many Glacier Hotel in the heart of Glacier Park. Shining mountains and tempting trails beckon hikers or saddle horse riders to spectacular beauty.



Prince of Wales Hotel in adjoining Waterton Lakes Park in the Canadian Rockies. Cruise on deep, sparkling blue Waterton Lake, hemmed in by towering glacier-clad mountains.



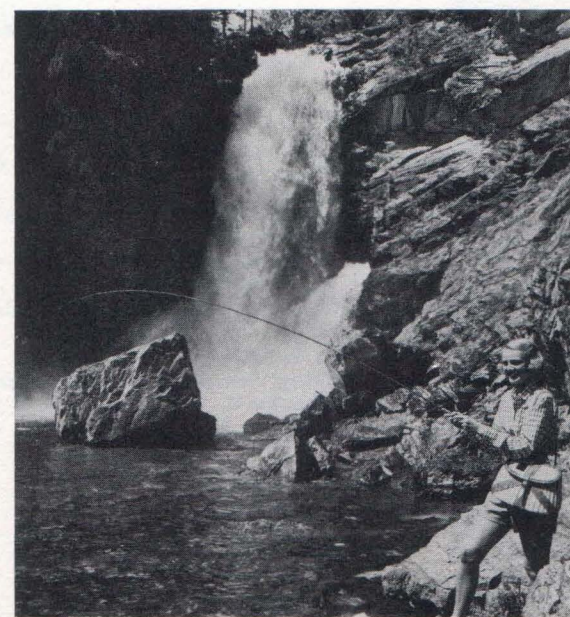
Glacier Park Lodge . . . just steps away from Great Northern's station. See Blackfoot Indians in tribal dances and ceremonies. Cruise on beautiful Two Medicine Lake nearby.



Open-Top Motor Coaches take you over Going-to-the-Sun Road and Logan Pass, past sparkling lakes, beautiful mountain flowers.



Camera Fans call Glacier a photographer's paradise. Incidentally, you can take wonderful pictures right from your train as it follows the park border.



Trick Falls, just a short distance from Glacier Park Lodge, where you'll want to try your luck at catching fighting trout. This is just one of the many streams and lakes where fishing is really fun.

See America's Cities, the Mississippi River, Great Lakes Region and Shrines of American History

Now, Great Northern's Route takes you across the broad reaches of Montana and North Dakota's plains teeming with wild life . . . dotted with oil wells. Great cattle ranches can be seen and golden wheat fields wave in the wind for as far as the eye can see. This is the bread basket of the world.

Then, on to Minnesota's Land of 10,000 Lakes and the mushrooming cities, Minneapolis, the milling center; Saint Paul, home of Great Northern. And, then, still another scenic beauty, the memorable Mississippi River Palisades. Follow this great river for 282 miles on your way to Chicago.

At Chicago, Great Northern passengers can make connections to all points East . . . Detroit, the motor city; Philadelphia, the first capital of the United States; Washington, D. C., and New York, the heart-city of our nation . . . cities filled with yesterday's history and today's excitement. There's so much to see going east when you go Great Northern!

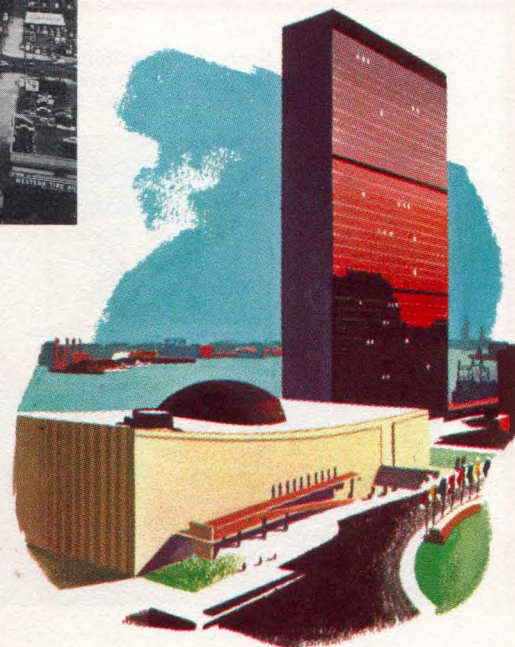
Minneapolis, city of lakes and parks, is the hub of a five-state industrial and agricultural region. The largest city in Minnesota in the Land of 10,000 Lakes.



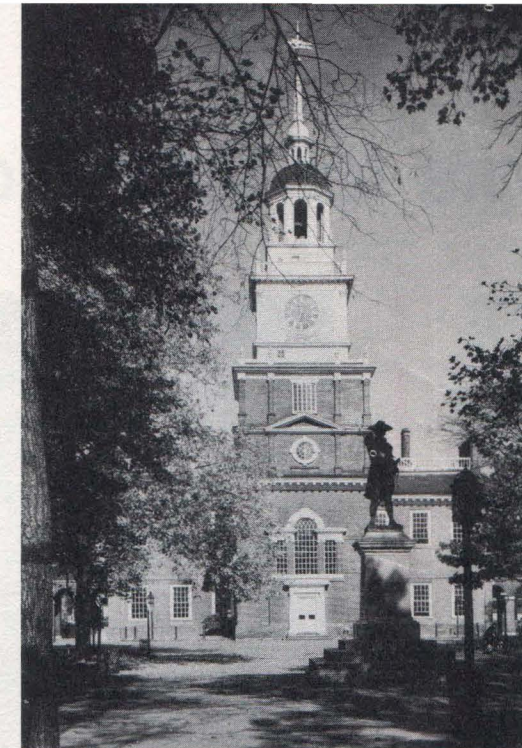
Chicago, America's second largest city and railroad hub. Here Great Northern's passengers connect with all points East and South. Famed for its skyline, Merchandise Mart and outer drive along Lake Michigan.



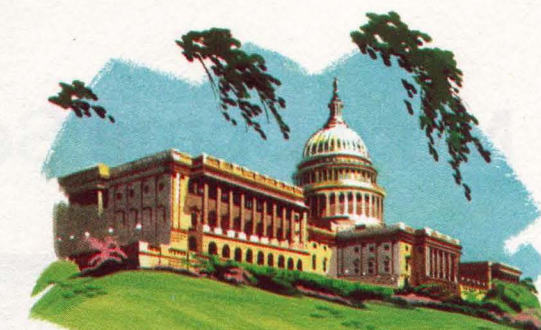
Detroit, America's automobile center. Visit the River Rouge plant, Greenfield Village. Across the Detroit River is quaint Windsor, Ontario—only Canadian city south of United States mainland.



United Nations, seat of international cooperation in New York City, offers guided tours. Visitors are permitted to sit in on regular sessions.



Philadelphia, the nation's first capital. Here men like Ben Franklin and John Hancock signed the Declaration of Independence. A great publishing center, it has the oldest art institute in the United States.



Washington, D. C., our nation's capital, is rich in attractions: the Capitol, White House, Washington Monument, Lincoln Memorial, The Library of Congress, Smithsonian Institution and many, many others.



St. Paul, capital of Minnesota, a thriving industrial center on the banks of the Mississippi River, is also the headquarters city for the Great Northern Railway.



New York is the most fascinating city on earth! Theatrical, culinary and pleasure capital of the western world. Famed for its Empire State Building, Radio City, the Statue of Liberty and Wall Street, the country's financial nerve center.