

GLORIOUS GLACIER PARK

Where the American and Canadian Rockies meet



Inter-Park Routes for Motor Coaches, Lake Launches, Hikers and Horseback Riders Make Glacier-Waterton Parks Easy to See

Direct to the Vacation Gateway

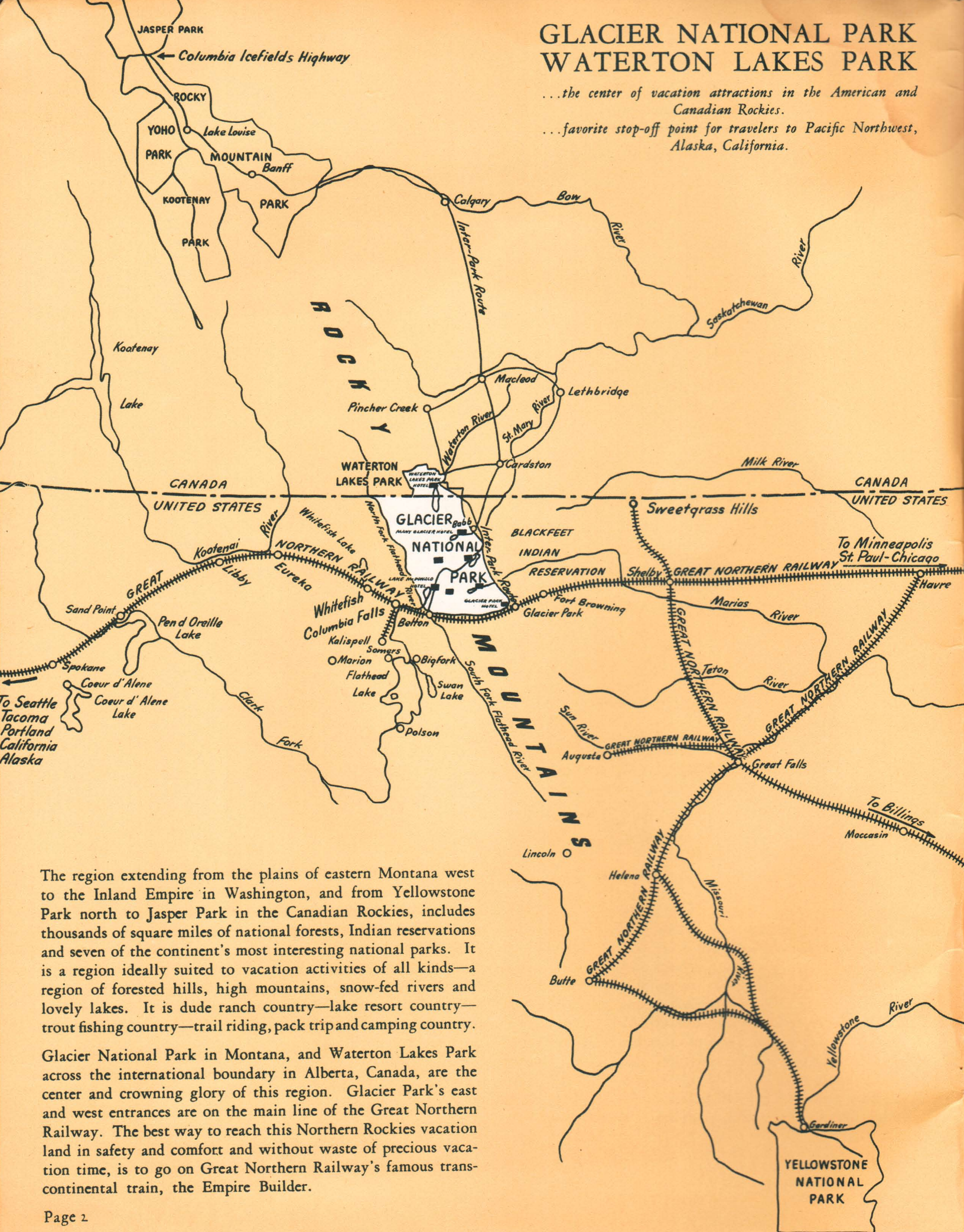
GLACIER NATIONAL PARK
WATERTON LAKES PARK
NEARBY PARKS IN CANADIAN ROCKIES



GLACIER NATIONAL PARK WATERTON LAKES PARK

...the center of vacation attractions in the American and Canadian Rockies.

...favorite stop-off point for travelers to Pacific Northwest, Alaska, California.



The region extending from the plains of eastern Montana west to the Inland Empire in Washington, and from Yellowstone Park north to Jasper Park in the Canadian Rockies, includes thousands of square miles of national forests, Indian reservations and seven of the continent's most interesting national parks. It is a region ideally suited to vacation activities of all kinds—a region of forested hills, high mountains, snow-fed rivers and lovely lakes. It is dude ranch country—lake resort country—trout fishing country—trail riding, pack trip and camping country.

Glacier National Park in Montana, and Waterton Lakes Park across the international boundary in Alberta, Canada, are the center and crowning glory of this region. Glacier Park's east and west entrances are on the main line of the Great Northern Railway. The best way to reach this Northern Rockies vacation land in safety and comfort and without waste of precious vacation time, is to go on Great Northern Railway's famous transcontinental train, the Empire Builder.

KEY TO GLACIER AND WATERTON LAKES PARKS

Season: June 15—September 15

FOUR PICTURESQUE HOTELS

Spacious — City Comforts — Excellent Meals — Reasonable Rates

GLACIER PARK HOTEL...at Great Northern Railway Eastern Entrance.
LAKE McDONALD HOTEL...near Great Northern Western Entrance.
MANY GLACIER HOTEL...in the heart of the American Rocky Mountains.
PRINCE OF WALES HOTEL...on Waterton Lake in the Canadian Rockies.

FOUR MOUNTAIN CHALETs

Romantic Settings — Restful Accommodations — Lower Rates

TWO MEDICINE CHALETs...on the shores of Two Medicine Lake.
GOING-TO-THE-SUN CHALETs...on beautiful St. Mary Lake.
SPERRY CHALETs...in the area of glaciers and goats.
GRANITE PARK CHALETs...on the west slope of the Garden Wall.
(All Hotels and Chalets Are Operated on the American Plan)

FOUR TRAIL CAMPS

Comfortable Beds in Floored and Heated Tents—Good "Grub"

RED EAGLE CAMP...on Red Eagle Lake, east of Little Chief Mountain.
FIFTY MOUNTAIN CAMP...on West Flattop Mountain, near Kootenai Pass.
CROSSLEY LAKE CAMP...on Crossley Lake, at foot of Mount Cleveland.
GOATHAUNT CAMP...at southern tip of majestic Waterton Lake.

OTHER IMPORTANT INFORMATION

Spectacular Things to See—Enjoyable Things to Do

1534 square miles of America's most colorful mountains...225 square miles of scenic beauty in adjoining Waterton Lakes Park, Canadian Rockies. ● 60 sparkling glaciers...Countless crystal streams... Hundreds of rainbowed waterfalls...250 jade and sapphire lakes...Meadows of gay wildflowers...A host of friendly animals. ● 1000 miles of foot and saddle trails...600 trustworthy saddle horses...plenty of capable guides...160 miles of excellent park highways...a

fleet of open-top motor coaches for sight-seeing and connecting Great Northern trains with all hotels and two chalets... launches on 5 lakes... ● Paradise for hikers and camera fans...Noble Blackfoot Indians in brilliant array...Fine trout fishing in streams and lakes...Golf...Swimming...Evening Parties...Dancing...Campfires...Nature shows, field trips and lectures conducted by Ranger-Naturalists. ● "Glacier Park Has Everything!"



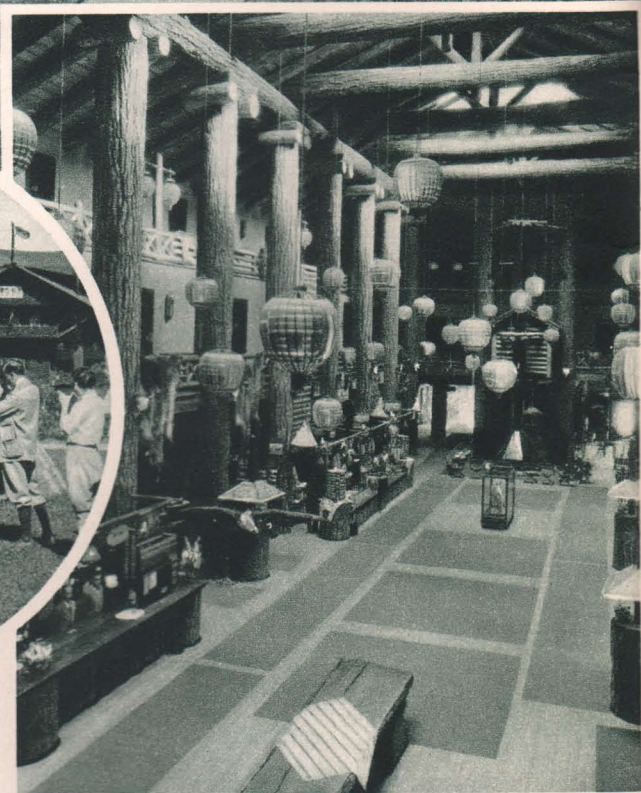
GLACIER PARK HOTEL



The modern Glacier Park Hotel welcomes travelers at the park's eastern entrance.



Blackfoot Indians pitch their tents and entertain guests with ceremonial dances.



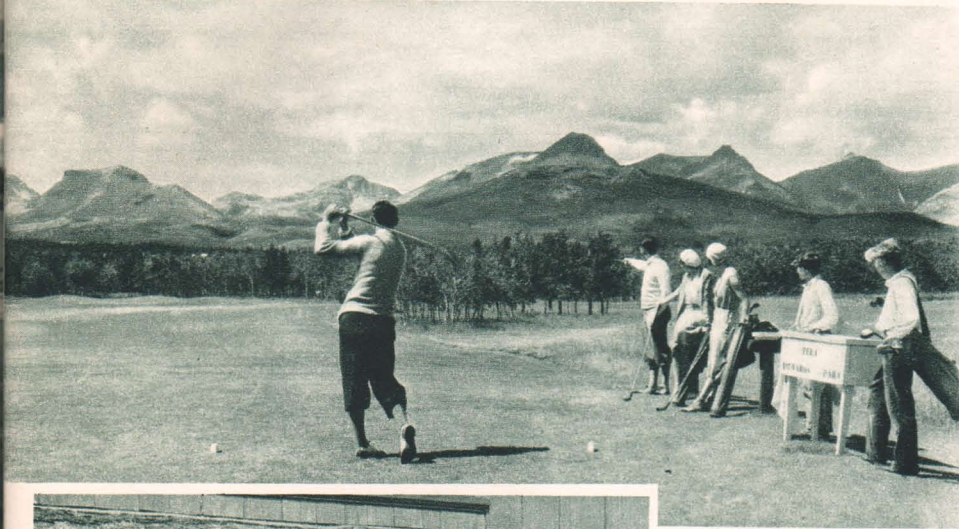
The lobby at Glacier Park Hotel invites relaxation and evening social activities.



Vacationers arrive at Glacier Park Station on Great Northern's Empire Builder.

The commodious Glacier Park Hotel is only a few hundred feet from the station at the eastern entrance to the park. "Big Trees Lodge," as the Blackfoot Indians call it, is an inspiring place to begin a thrilling vacation. All the essential comforts of the modern hotel are provided, and the meals are excellent. The large lobby, with its unique open fire, and the sun room facing the snow-tipped mountains, are most attractive. Glacier Park Hotel is the eastern

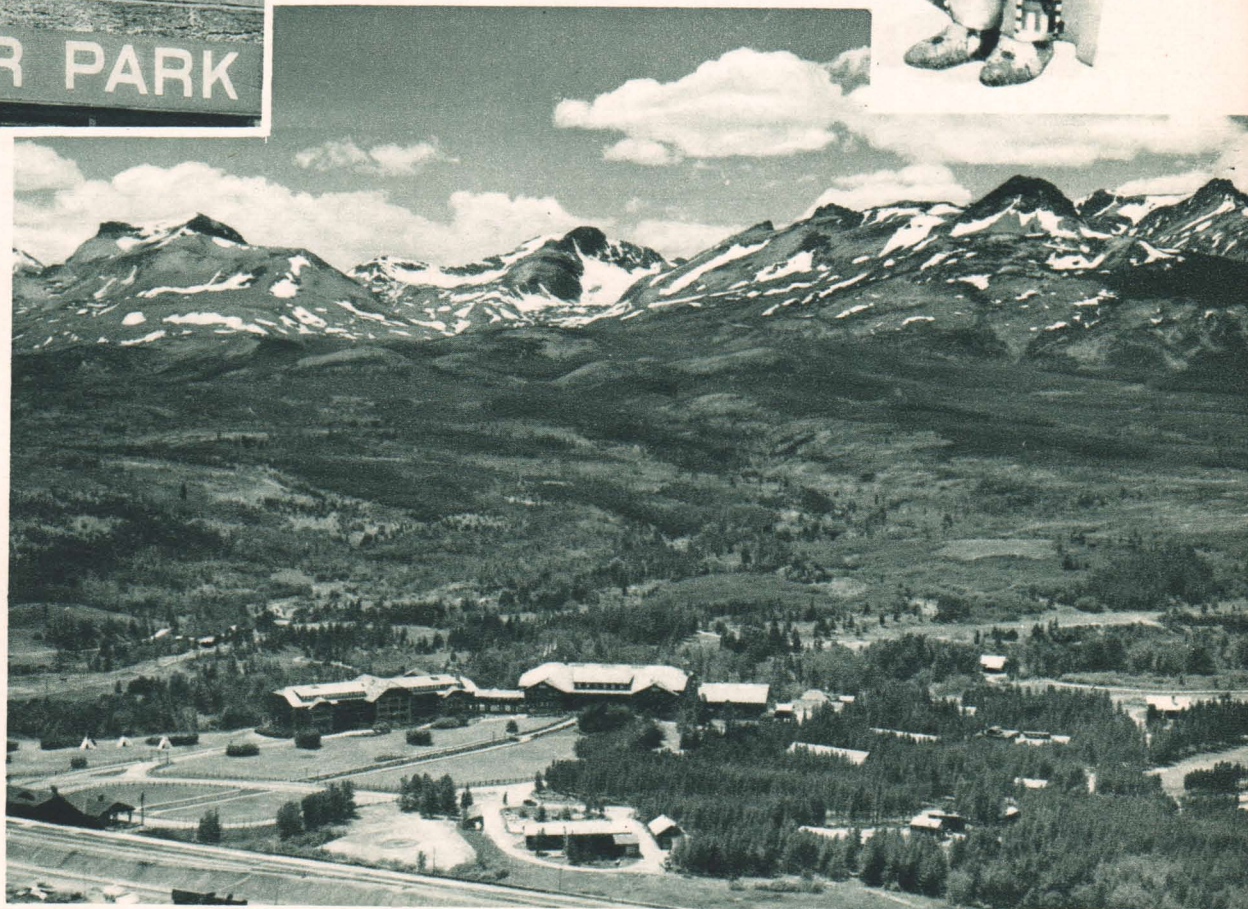
EAST ENTRANCE TO VACATION LAND IN AMERICAN AND CANADIAN ROCKIES



Right—
A young Blackfeet
brave dreams of the day
when he will sit in his
tribe's councils.

Left—
A sporty nine-hole
golf course is main-
tained for golfing guests
at the hotel.

Below—
Glacier Park Hotel,
snow-tipped mountain
peaks and forested
slopes from the air.



starting point for motor coach tours which take you through America's most colorful mountains. Within a radius of a few miles there are many interesting objectives for saddle horse riders and those who enjoy hiking on easy-grade mountain trails. But before you leave, be sure to challenge par on the sporty golf course near the hotel. And don't fail to see the Blackfeet ceremonials.



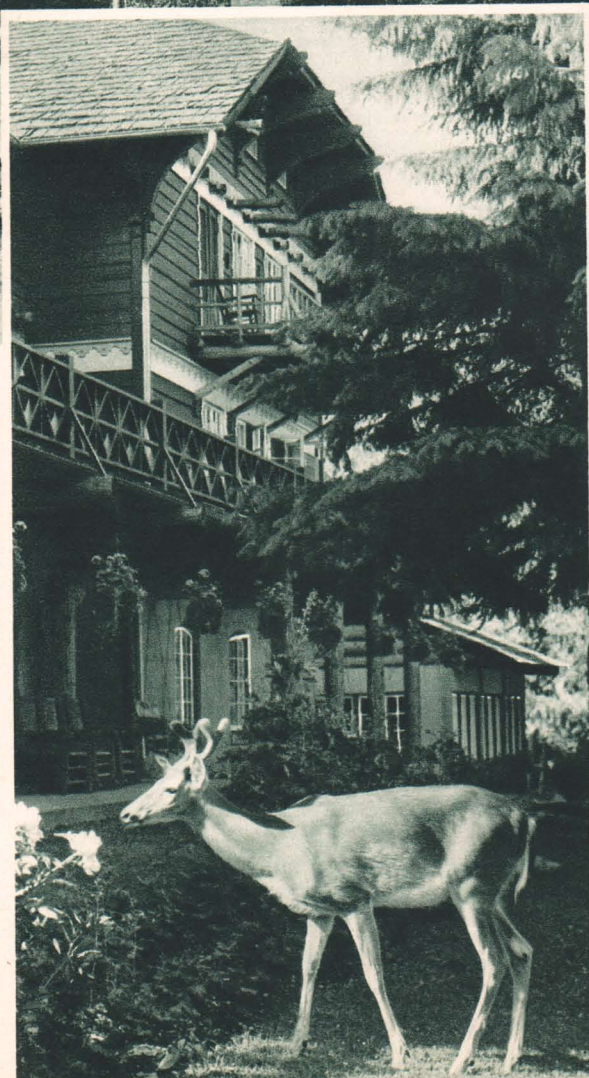
LAKE McDONALD HOTEL

West Portal to GLORIOUS GLACIER PARK

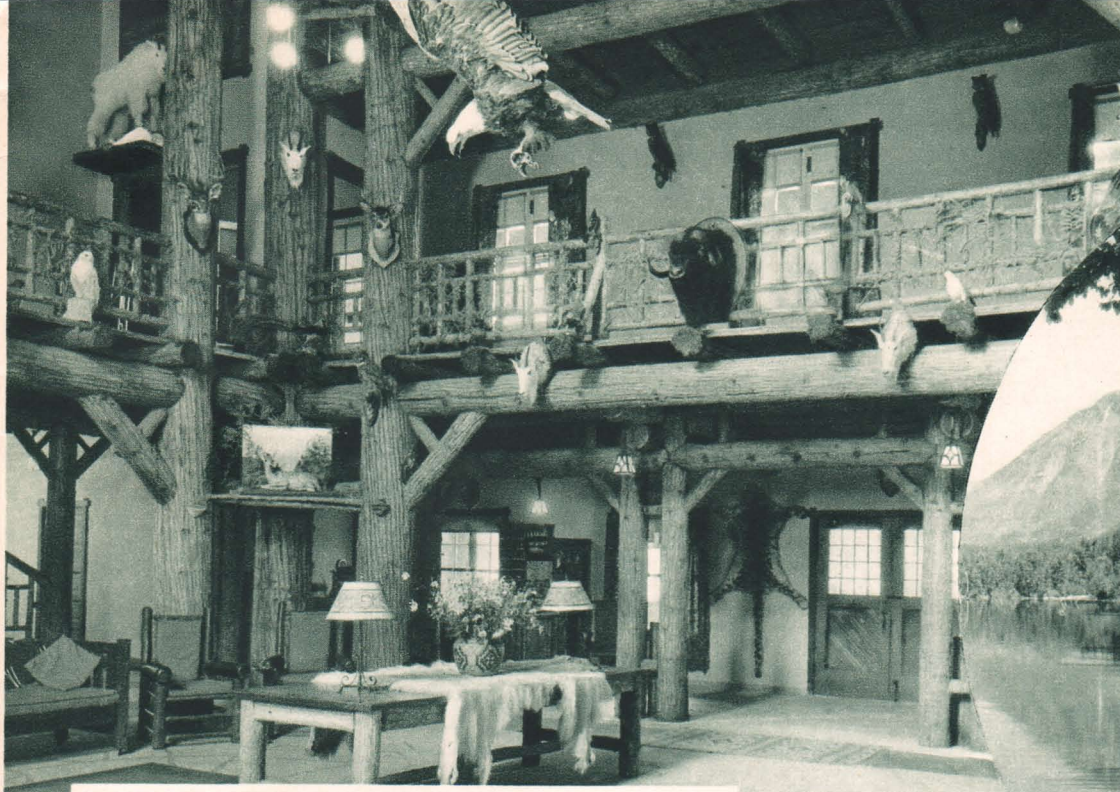


Picturesque Lake McDonald Hotel, near the western entrance to Glacier Park, overlooks magnificent lake and mountain vistas.

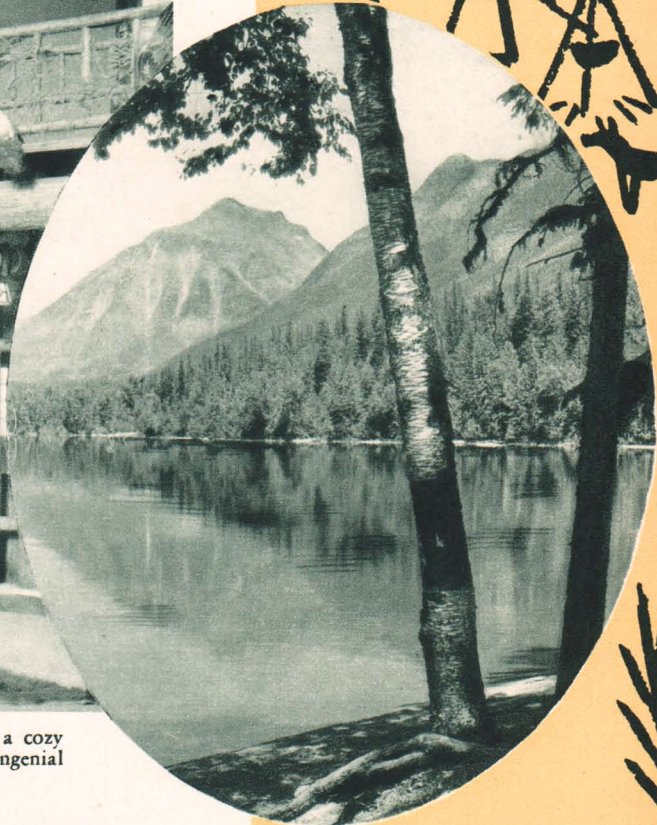
You are sure to receive a welcoming visit from Buck, the pet deer who has won the friendship of thousands at this hotel.



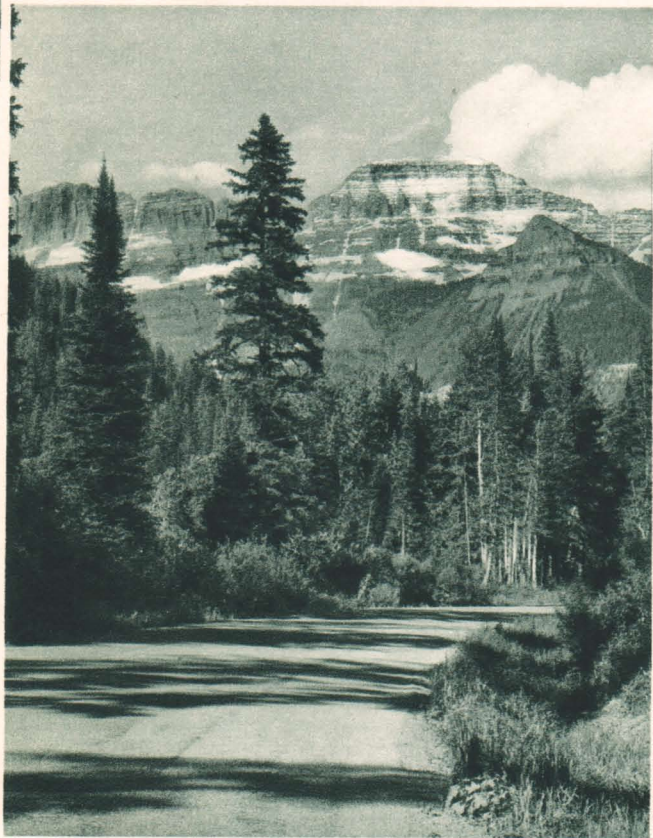
A dip in the lake is a refreshing diversion between hikes or rides.



The hotel lobby is a cozy gathering place for congenial vacationists.



The peak and forested slopes of Mt. Cannon are mirrored in tranquil Lake McDonald.



To have seen nature's beauty from this highway is to have experienced the sublime.



Early morning, and ready to go on a trail hike up the side of a mountain.

From Belton station, western entrance to Glacier Park, it's just a short motor coach ride along the shores of the park's largest lake to Lake McDonald Hotel. Here you'll find excellent hotel accommodations or, if you prefer, cozy log cottages in the adjoining park-like grounds. The lobby, where a huge open fire invites relaxation, and the dining room overlooking the lake and mountains, are reminiscent of hunting lodges.

Regularly scheduled motor coach tours over the inter-park highway have their western beginning at Lake McDonald Hotel. Here also, saddle and pack horses, guides and camping equipment for a long or short trail trip can be engaged. Cruising Lake McDonald is a large launch from which mountain grandeur can be seen or moonlight shadows and reflections enjoyed. If you like to fish, try your luck in Lake McDonald or nearby streams.

MANY GLACIER HOTEL

Heart of Scenic Grandeur



Hub of Many Park Activities



Many Glacier Hotel is nearest to the center of the park, and thus is the center of everything.

These western horses are sure-footed and gentle, and riding them is lots of fun.



Just a short walk from the hotel brings you to this beauty spot—Swiftcurrent Falls.



Many Glacier Hotel from Swiftcurrent Lake.



Off for a sightseeing tour on the park highway.



Boat trips on Swiftcurrent Lake, with a Ranger-Naturalist in attendance, are delightful and educational.



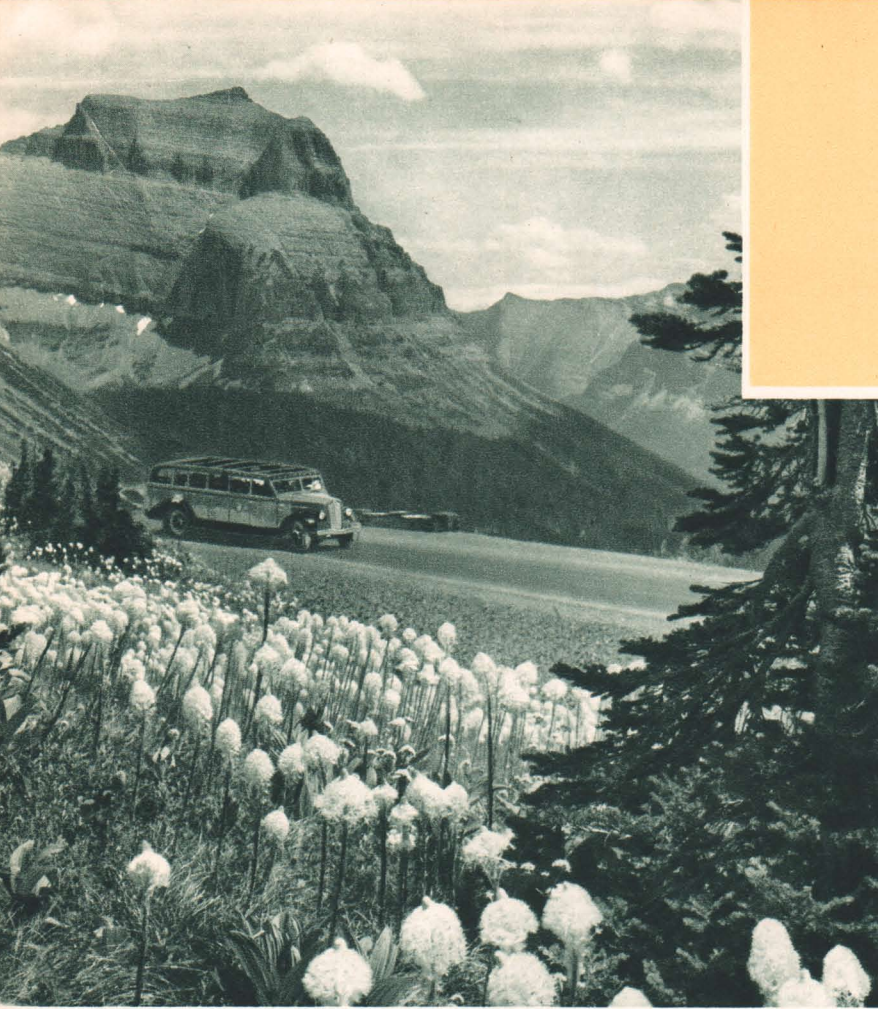
Many Glacier Hotel, Swiftcurrent Lake, Grinnell Mountain and Glacier.

Many Glacier Hotel, largest in the park, is located on Swiftcurrent Lake and is the center of many unsurpassed points of interest. In this picturesque hotel one finds a happy mixture of hospitality, comfort, fine meals and enjoyable entertainment. Built of native timber and stone, it is attractive architecturally and equally pleasing in every detail of service—and really delightful in the friendliness vacationists want.

Situated in one of the park's most alluring basins, Many Glacier Hotel commands a scenic area where peak after peak rears its snow-capped pinnacles toward fleecy clouds in deep blue skies. It is the key to "the sublime wilderness." From here, in many directions, lead motor coach routes, launch lanes and mountain trails for riders and hikers—all reaching into varied forms of beauty which no words can ever describe.

GOING

Inter-Park Boulevard Connecting With



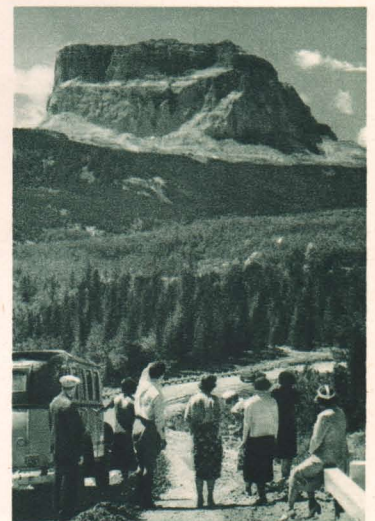
Rolling along the broad park highway, you are treated to continuous surprises, such as this field of fluffy Beargrass.



Approaching Logan Pass on Going - to - the - Sun Highway.



Frequent stops are made to afford passengers a long look at scenic splendors.



On the highway to Prince of Wales Hotel, stop and be enthralled by Chief Mountain—landmark of the old North Trail.

Within Glacier Park is one of the outstanding scenic motor coach roads of the world. This marvel of landscape location and engineering skill traverses the park, crossing the Continental Divide at Logan Pass, nearly 7,000 feet above sea level. Connecting with this wide highway, and forming an incomparable system for park motor coach service, are excellent roads to points of special interest and beauty.



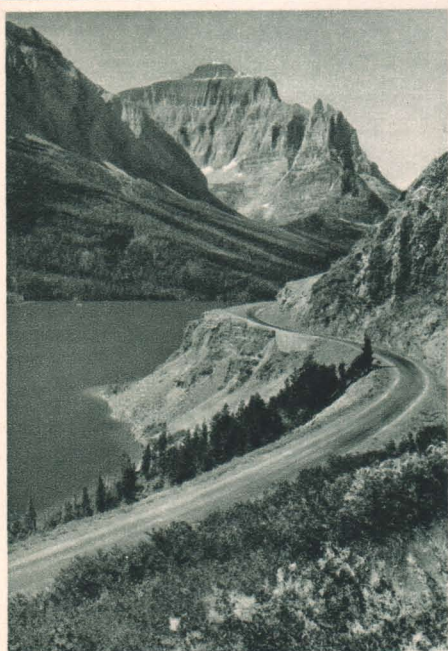
-TO-THE-SUN HIGHWAY

Over the Roof of the Rockies

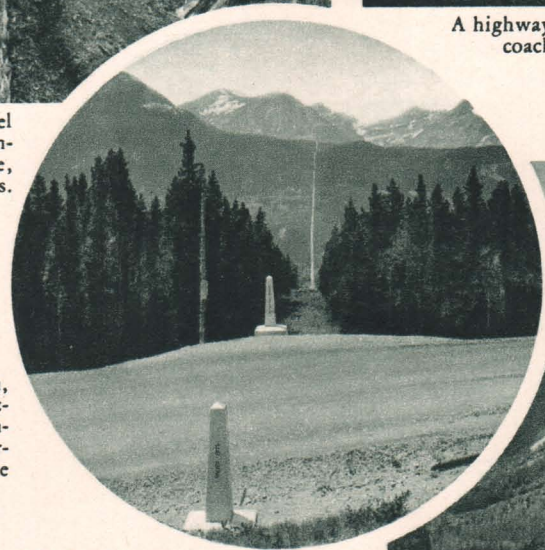
Highways to Canadian Parks and Resorts



A highway tunnel window frames a motor coach party enjoying the scene.

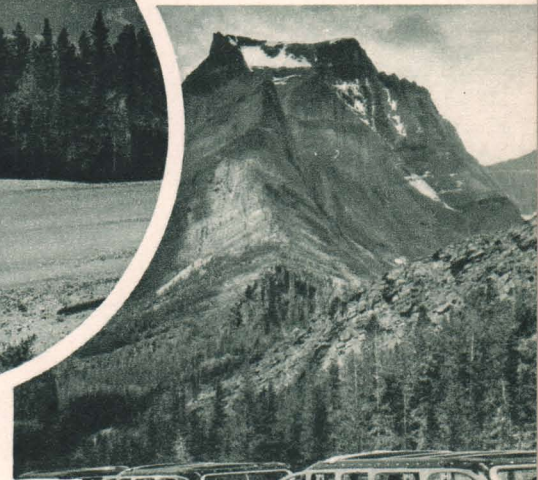


Highway tunnel through the Continental Divide, near Logan Pass.



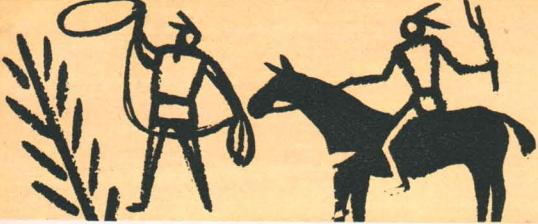
Around each turn, a new and amazing scene, seemingly more gorgeous than those before.

No barriers, no guns. Only two granite monuments mark the boundary between the United States and Canada.

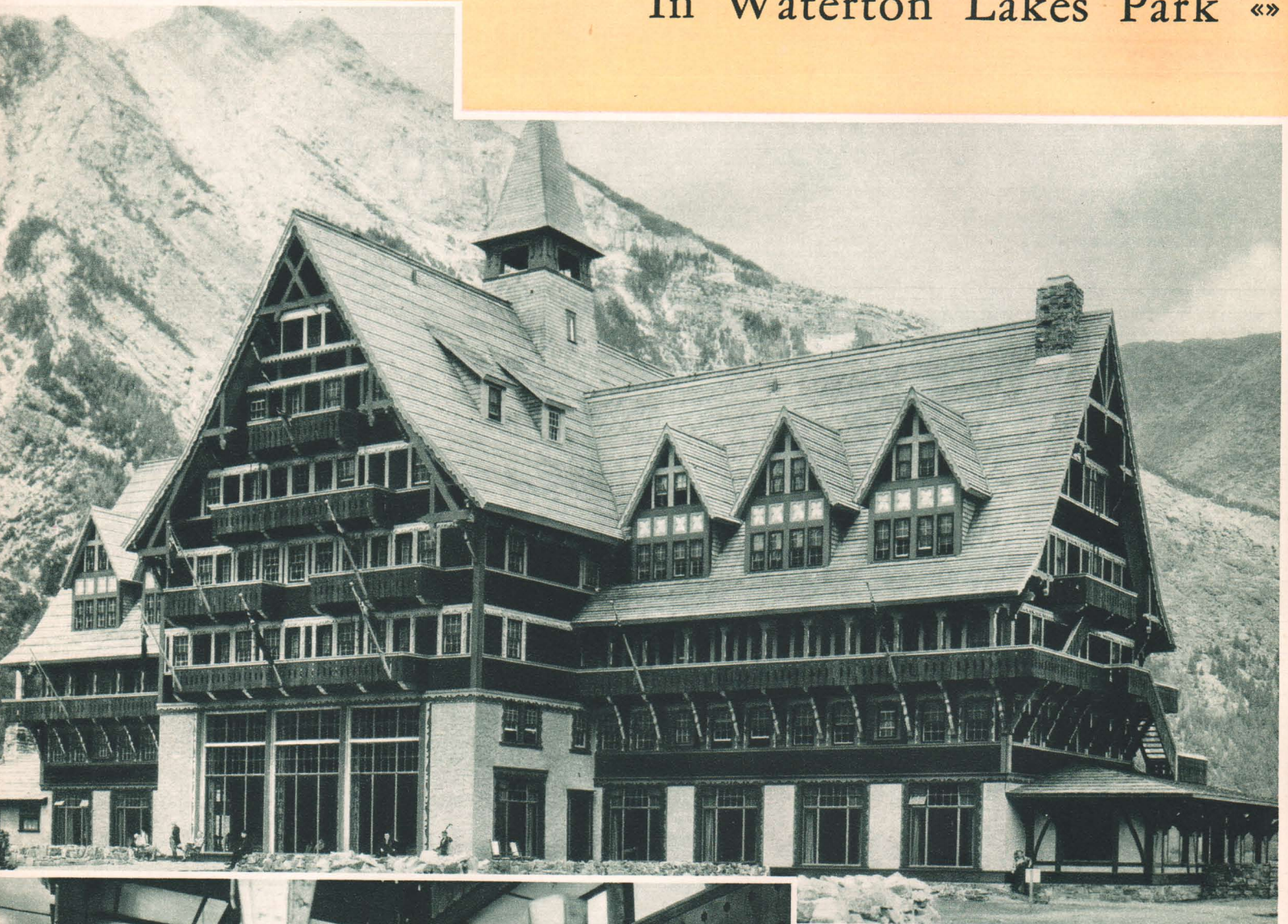


Motor Coaches stop at Going-to-the-Sun Chalets on beautiful St. Mary Lake.

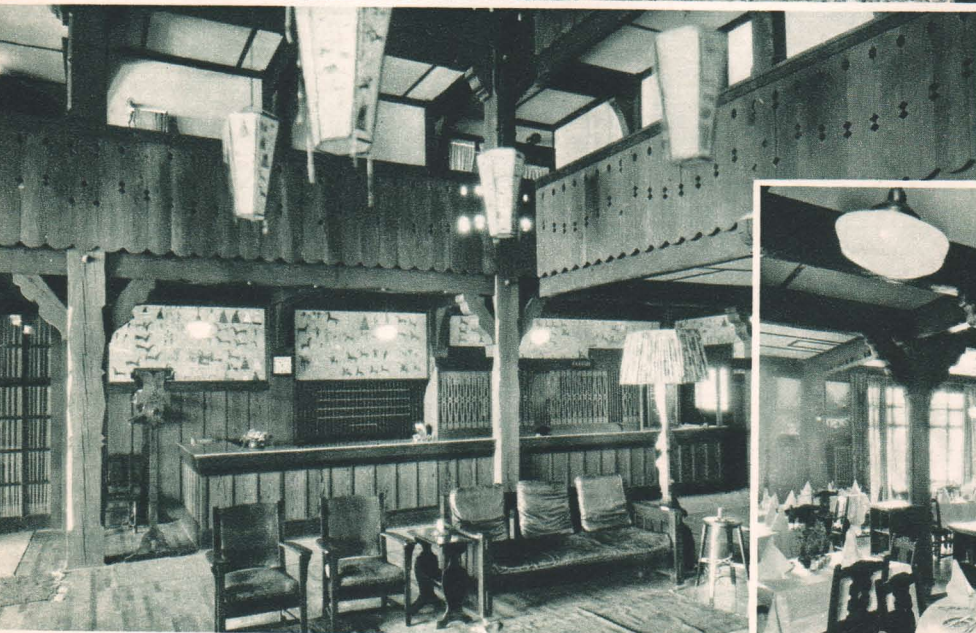
Comfortably seated in luxurious, specially-designed motor coaches, passengers feast on panoramas which even the most active imagination cannot paint with descriptive phrases. Leading north, this highway takes visitors close to the base of famed Chief Mountain, across the Canadian Boundary to the Prince of Wales Hotel at the upper end of Waterton Lake, in Waterton Lakes Park.



PRINCE OF In Waterton Lakes Park «»



Rare, indeed, is a resort hotel to compare with this—the Prince of Wales.



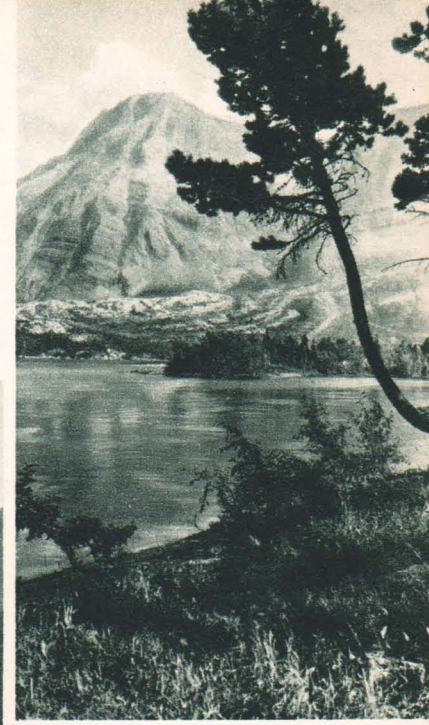
Corner of lobby, showing a few of the pictographs made by old-timers of the Blood Indian Tribe.



Attractive dining room at picturesque Prince of Wales Hotel.

WALES HOTEL

Canadian Rocky Mountains



Looking across Waterton Lake to Mt. Vimy.



Panorama of Waterton Lakes, looking south toward Glacier Park.



The launch, International, makes round trips the full length of Waterton Lake.



A fascinating view of Waterton Lake from the restful sunroom.

Crowning a vantage point at the foot of Mt. Crandell, on the shore of Waterton Lake, is the Prince of Wales Hotel. No ordinary hotel is this, and no ordinary locale. Each belongs to the other. To linger beneath these gabled roofs is a strong temptation—for there's nothing lacking in what one expects of a hotel nor in opportunities for full enjoyment. Trail riding, hiking, mountain climbing, swimming and launch trips are popular diversions. Close by is a good golf course and not far distant, in the village of Waterton Lakes, are tennis courts, children's playgrounds and other provisions for enjoyment. And from here lead motor coach routes to Banff, Lake Louise, the spectacular Columbia Icefields, Jasper Park and other parks which are the pride of Canada.



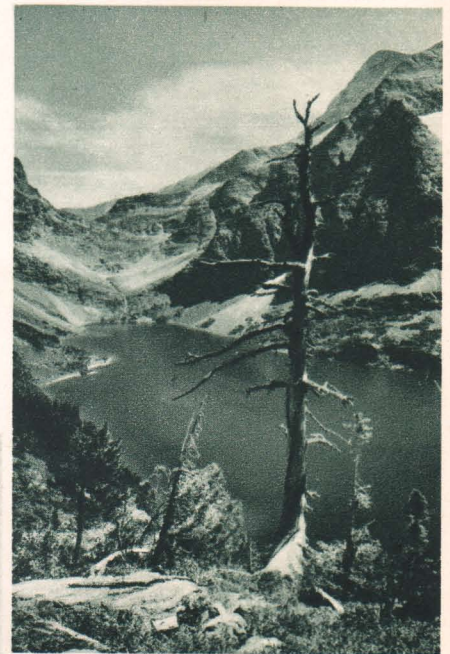
RESTFUL MOUNTAIN CHALETS

Each Surrounded by
Spectacular Panoramas
and Each
the Central Point for
Foot and Saddle Trails

•



Going-to-the-Sun Chalets, on St. Mary Lake, is delightful for a short or long stay.

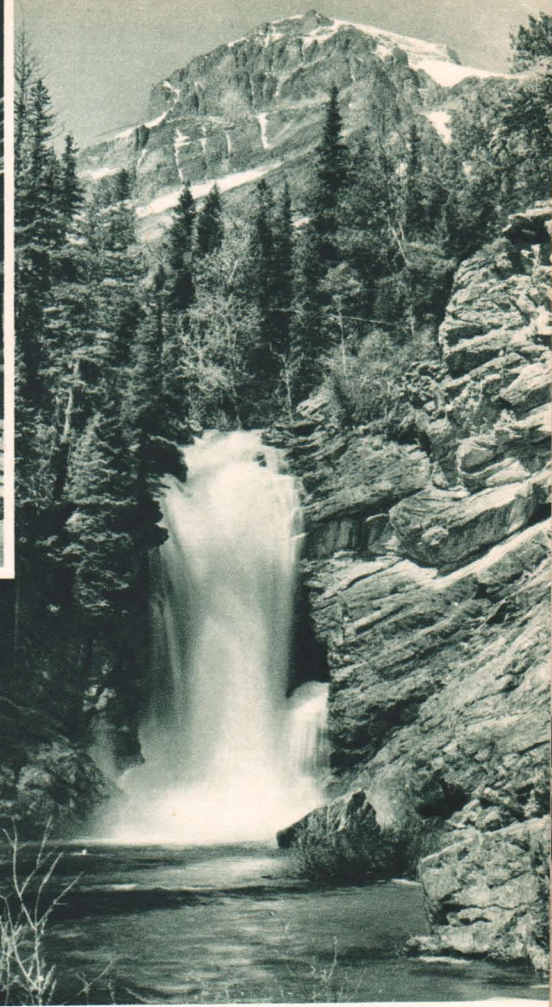
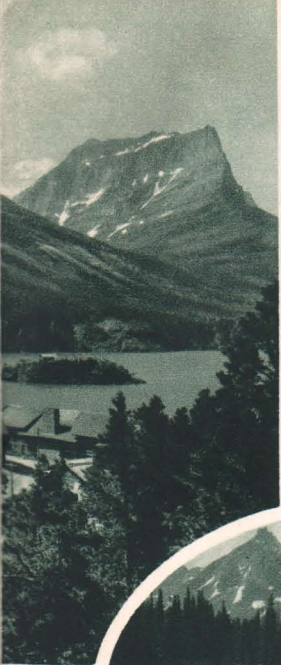


Lake Ellen Wilson, near Gunsight Pass on the South Circle Trail.



Sperry Chalets—a timberline retreat overlooking an area of supreme grandeur.

In Glacier Park are four attractive alpine chalets offering completely satisfying, inexpensive accommodations for a stay of a few days or a few weeks. Two are located on beautiful large lakes in verdant valleys, and on the inter-park highway. From both there are many trails to hike or ride. Two others are situated high in the mountains, on two of the park's most popular trails for saddle horse or walking trips, but not on a highway.



At Two Medicine Chalets, on Two Medicine Lake, you have a rendezvous with the great outdoors.

The launch makes regular trips on Two-Medicine Lake. The rowboats, too, are popular.

Trick Falls, near Two Medicine Chalets.



Granite Park Chalets command a fine view across Mineral Creek valley to the peaks of the Livingston Range.



Heavens Peak and Lake McDonald, west of Granite Park Chalets.

Many world travelers have said that nowhere else is so much beauty crowded into one compact area as in Glacier National Park. But much of this grandeur would be inaccessible and unknown to the majority of nature loving vacationists without the facilities provided by these four chalet groups—Going-to-the-Sun Chalets, Two Medicine Chalets, Sperry Chalets and Granite Park Chalets. Visit one and you'll want to see all.

Ten Thousand
 Things to See and Do
 IN
 THE MAGICAL LAND
 OF
 "THE SHINING
 MOUNTAINS"



In all the Rocky Mountain region there is no lake more beautiful than St. Mary.



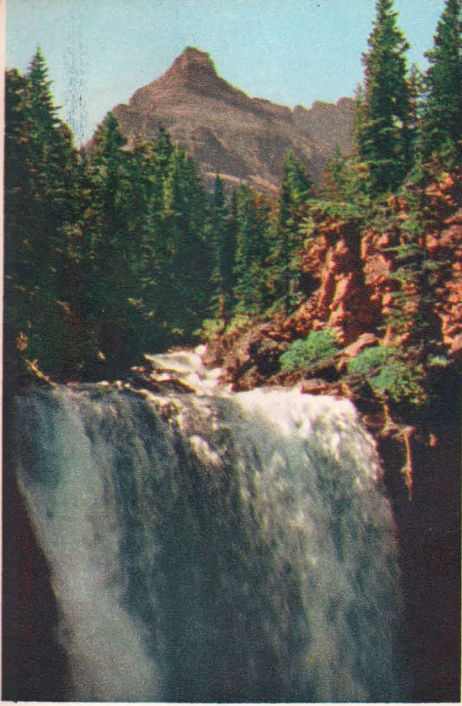
Glacier Park guides know the transmountain trails "like a book."



The Garden Wall and Grinnell Glacier from Lake Josephine, west of Many Glacier Hotel.



In Glacier Park there's a friendliness that is immediately noticeable to the first-time visitor and a major reason for return visits by many vacationists. Here the mountains are colorful and inviting, not drab and forbidding. Closely grouped, they seem to extend genuine cheer. Likewise, the glorious lakes and streams, dashing waterfalls and meadows blazing with gay wildflowers are more than ordinarily friendly.



Spectacular Dawn Mist Falls in the Belly River Country.



Going - to - the - Sun Mountain, east of Logan Pass, looks down on St. Mary Lake.



Blackfoot Indian encampment attracts visitors.

Every turn in the trail brings a new scenic surprise.



Vacationists learn about the mysteries of nature from a Ranger-Naturalist.



The ornate costumes and elaborate head-dresses of the Blackfeet Indians attract artists and photographers each summer.

Glacier Park's attractions are not limited to scenery. Here you can spend a day or a month that will be as exciting or as restful as you wish. Go trout fishing and catch a string of beauties. Pow-wow with Blackfeet braves and learn of the tribe's exploits. Add to your store of knowledge by going on a field trip with a Ranger-Naturalist. Climb a mountain or explore a glacier with a capable guide. Take pictures.



PARK TRAIL TRIPS

Up and Down, In and Out
Through Breath-taking
Beauty With Capable Guides
And Trustworthy
Western Horses

As man reckons time, Glacier Park is an ancient place, but long before the time computed by man, nature was preparing this now favored area to be a playground for you and the generations to follow. Today it is young and vigorous in spirit and imparts rejuvenation to those who come here to spend carefree days in the open.

On page 28 you can learn of the park's geologic history—how these amazing mountains, valleys, streams and lakes were formed in an area that was once a shallow, mud-bottomed sea. For the moment we will think not of the past but of today—the todays of your vacation.

Winding trails through the valleys and zig-zagging up the fascinating slopes to passes between towering peaks, have conquered the mountains—for you. Nature's secrets, once securely locked by walls of stone, are now an open book for you to read.

Dressed in comfortable outing clothes, swing into a real western saddle astride a gentle, trail-wise horse and be on your way to high adventure.

Ahead of you and your party, probably whistling a rollicking cowboy tune, is your guide. He knows these trails as you know

Boy meets girl in romantic wilderness.

Wranglers prepare for a day on the trail.

Far from the impediments of man-made civilization.

your own city streets—maybe better. And before you have completed your trip you'll learn that he is a combination of expert horseman, mountain guide, cook, philosopher and entertainer. He's a man you'll never forget.

If your first ride is a short one, everything needed will be strapped to the saddle backs. If you are going on one of the longer trips or into less frequented sections of the park, one or more reliable pack horses will follow in single file, bringing everything essential to your comfort and well-being. You haven't a thing to think about but this thrilling, healthful experience.

Before you have gone very far you'll feel two kinds of exhilaration—physical and spiritual. The sun-drenched mountain air will invigorate you and it's likely that you'll feel the approach of an appetite such as is rare in city living. But more important, you'll feel the cares of the workaday world dropping behind and you'll discover the real joy of living.

You'll ride through forests of stately cedar, fir, pine, spruce and other evergreen varieties. You'll ride through narrow lanes bordered with shrubs having leaves of shining green. You'll cross meadows splashed with the colors of dozens of species of wildflowers—many of them rarely seen elsewhere.

Your trail will take you along singing brooks, many of which leap down from high cliffs and fall into a foaming pool at your feet. Then you'll ride along the shores of a clear, cool lake and pause to watch the reflections in their mirror-like surfaces.

Soon you'll be riding into a high-walled canyon or up a switch-back—a series of alternating turns to make climbing easy for your horses. All the while you are making mental memory pictures of spectacular scenes, and if you have planned wisely you'll be shooting many rolls of standard or color film with your camera.

Somewhere along the trail when you are stopped by the view you'll hear the glad shout, "Come and get it," which is the guide's substitute for a butler's, "Luncheon is served." With your lunch he serves delicious hot coffee—a tradition on Glacier Park trails. Later in the day, after riding through an endless panorama of mountains, glaciers, lakes, streams and waterfalls, you'll arrive back at your starting point or at a chalet or trail camp where you'll spend a restful night in preparation for more adventure tomorrow.



COMFORTABLE CAMPS IN ROMANTIC SETTINGS

Deep in Nature's Sanctuary



Red Eagle Creek and Red Eagle Mountain.



Red Eagle Trail Camp, on the shore of Red Eagle Lake, is a welcome haven on the Inside Trail.



Kootenai Mountain north of Fifty Mountain Trail Camp.



Fifty Mountain Trail Camp on Flattop Mountain, on the North Circle Trail.

Red Eagle Camp is reached by trail only and is an over night stopping place for riders taking the "Inside Trail Trip." It is also a favorite spot for fishermen, as there are plenty of cutthroat trout in the lake.

Fifty Mountain Camp, also reached by trail only, is located on the "North Circle Trail." Here on Flattop Mountain, riders can see fifty of the park's beautiful mountain peaks and find good accommodations and good food.

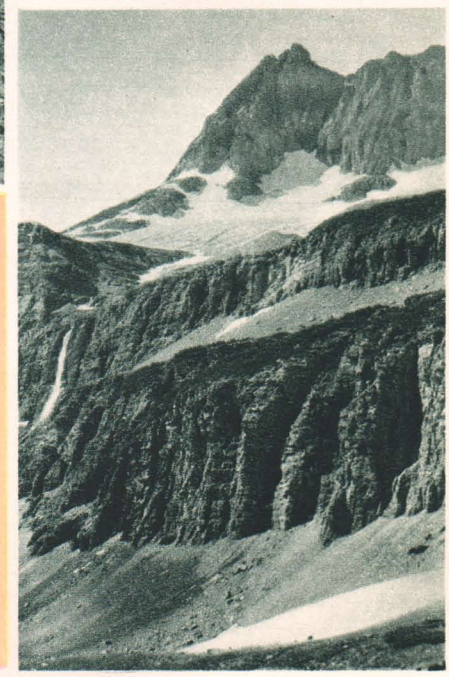


Trail riding party at Crossley Lake Trail Camp, ready for a glorious day.



Crossley Lake Camp, on the "North Circle Trail," is located in an especially beautiful lake and mountain region. The camp is comfortable and the food good. And there's superb trout fishing nearby.

Goathaunt Camp is beautifully situated at the southern end of Waterton Lake, and is another stopping place on the "North Circle Trail." From here one can go by boat to the Prince of Wales Hotel, in the adjacent Canadian Rockies.



Cradled in a rocky basin is the eternal ice of Shepard Glacier.



Goathaunt Trail Camp, farthest point north on the North Circle Trail.

The southern tip of Waterton Lake, on which Goathaunt Trail Camp is located.



TAKE YOUR PICK OF TRIPS

For a Short or Long Adventure in "The Sublime Wilderness"

Sperry, Granite Park and Cut Bank Chalets—Red Eagle, Fifty Mountain, Goathaunt and Crossley Lake Camps—and trails through high mountain passes, are open for saddle horse parties on July 1st and close about September 1st.

INSIDE TRAIL TRIP

A four-day, 62-mile trail ride which can be started at Two Medicine and Going-to-the-Sun Chalets or Many Glacier Hotel.

Northbound from beautiful Two Medicine the trail is over spectacular Cut Bank Pass, past Lake of Seven Winds and Jonah's Bowl to Cut Bank Chalets—a 16-mile trek. Over night in the Chalets, then a 15-mile ride to Red Eagle Camp through the Cut Bank Valley, over Triple Divide Pass (waters from Triple Divide Peak flow to the Arctic, Atlantic and Pacific Oceans).

The third day's ride from Red Eagle Camp to Going-to-the-Sun Chalets is 13 miles of enchanting beauty along the shores of St. Mary Lake, one of the world's famed mountain lakes. The fourth and last day's ride is toward Many Glacier Hotel—18 miles via Piegan Pass through country of sensational grandeur.

SOUTH CIRCLE TRAIL TRIP

This is a 5-day, 69-mile ride which may be started from Many Glacier Hotel, Going-to-the-Sun Chalets or Lake McDonald Hotel.

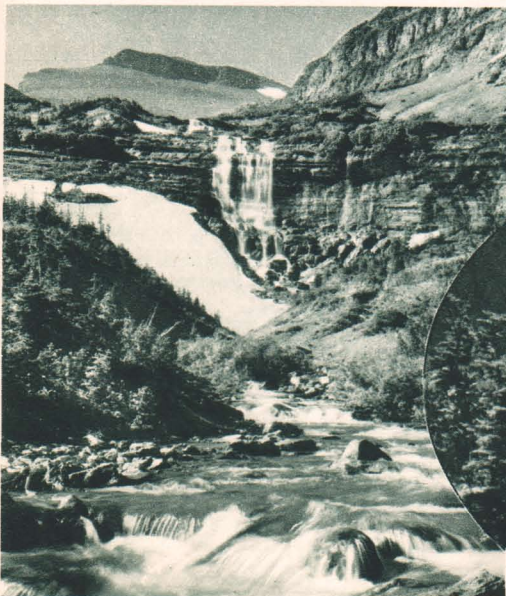
Let's start from Going-to-the-Sun. Up we go through Piegan Pass to Many Glacier Hotel, 18 miles, for the night. Next morning we ride 9 miles on the Swift-current Pass Trail to Granite Park Chalets, where the stop is over night. On the third morning we are on the trail for 19 miles to Lake McDonald Hotel, through some of the most scenic sections of the park.

On the fourth morning the ride is up to Sperry Chalets and Glacier (6 miles to the Chalets and 2 miles farther to the glacier). In the afternoon there's time to explore the glacier and surrounding country, home of the Rocky Mountain Goat. Over night at Sperry Chalets.

Up early next morning for 16 stupendous miles through Lincoln Pass and down along Lake Ellen Wilson. Then up again through Gunsight Pass. Not far distant from Gunsight Lake is Blackfoot Glacier—largest in the park. The ride from Gunsight Lake, below the pass, to Going-to-the-Sun Chalets—our starting point—is 9 miles.



Crossing Cleveland Creek in the north country.



Morning Eagle Falls in the Piegan Valley.



A "switchback" in the trail makes climbing easier for the horses.

A guide leads the way—a pack horse brings supplies.



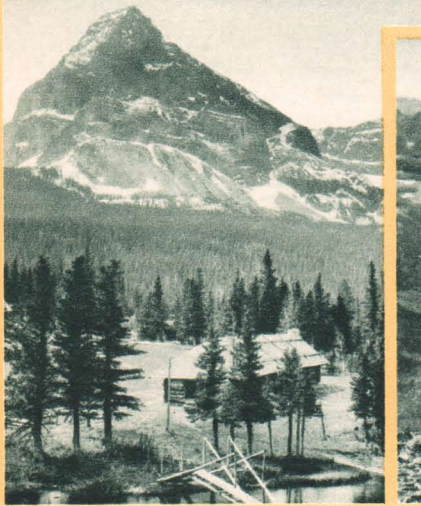
Water from Lake Ellen Wilson falls 1500 feet into Lincoln Lake.



Sperry Basin, showing trail in mid-distance.



Gunsight Lake, near the Continental Divide.



Cut Bank Chalets.



Upper Two Medicine Valley and Lake.



Rockwell Falls spills glacial waters into a foaming pool.

NORTH CIRCLE TRAIL TRIP

This five-day trip into the most rugged area of Glacier Park is a 66-mile ride if starting from Many Glacier Hotel. (The trek also may be made from Going-to-the-Sun Chalets and Lake McDonald Hotel.)

The first morning's ride is 9 miles via Swiftcurrent Pass to Granite Park Chalets. In the afternoon it's an easy hike to the top of the Garden Wall or up Swiftcurrent Peak. The second morning the ride is 11 miles over the Skyline Trail, above the timber line, affording a full view of the peaks of the Livingston Range to the west. There's time after lunch for a short ride to a vantage point at Ahern Pass, from which can be seen Ahern Glacier, Lake Helen and, in the distance, Lake Elizabeth and the Belly River Valley. In the afternoon, riders continue on the trail to Fifty Mountain Camp where they stay over night.

On the third day the trail switchbacks down from West Flattop Mountain into the forested Waterton River Valley. The distance to Goathaunt Camp, where the third night is spent, is 10 miles. The ride on the fourth morning is continuously upward, past deep blue Indian Lake, to Indian Pass—considered by many to be the most beautiful in the park. The view that unfolds before riders as they come through the pass is truly awe-inspiring. From the pass the trail zig-zags down to a beautifully wooded valley, then along the shore of Glens Lake—a day's ride of 18 miles.

It's another 18 miles the fifth day, over a trail that crosses and re-crosses the Belly River; leads past Dawn Mist Falls and Lake Elizabeth; goes up the north face of Ptarmigan Wall and through a trail tunnel to an eagle's-eye view of Ptarmigan Lake. From here the ride is down into Swiftcurrent Valley, to Many Glacier Hotel.

TRIANGLE TRAIL TRIP

An impressive, three-day trail trek of 44 miles, starting from Many Glacier Hotel. In the morning up Swiftcurrent Valley, past Bullhead Lake and Red Rock Falls to the summit of Swiftcurrent Pass—7,176 feet. Granite Park Chalets over night, and next morning southward along the Garden Wall to Logan Pass. Lunch on the trail, then down to the shores of St. Mary Lake and hospitable Going-to-the-Sun Chalets for the night.

The third day's trip, 18 miles, leads along the west side of famed Going-to-the-Sun Mountain to Piegan Pass, along the shores of Josephine and Swiftcurrent Lakes to Many Glacier Hotel. This trip also may be started from Going-to-the-Sun Chalets.

POPULAR TRAIL OUTINGS

of 1, 2, 3 and 5 days each
From Hotels and Chalets

FROM GLACIER PARK HOTEL. Forty Mile Creek and return, 8 miles. An easy half day's ride. Mount Henry and return, 12 miles. A fine one-day ride. Two Medicine Chalets and return via Mt. Henry going, lower trail returning, 23 miles—a two-day trip.

ALL-EXPENSE TRIPS. Inside Trail Trip to Two Medicine Chalets by bus and horseback to Cut Bank Chalets, Red Eagle Tent Camp and Going-to-the-Sun Chalets, 12 miles by bus, 44 miles on horseback, three days. Inside Trail Trip to Two Medicine Chalets by bus, and horseback to Cut Bank Chalets, Red Eagle Tent Camp, Going-to-the-Sun Chalets and Many Glacier Hotel, 12 miles by bus, 62 miles on horseback, four days.

FROM MANY GLACIER. Grinnell Lake and return, 10 miles, half day. Iceberg Lake and return, 14 miles, half day or full day. Granite Park Chalets and return, 18 miles, two days with overnight stop at Granite Park Chalets. Grinnell Glacier and return, 14 miles, one day. Cracker Lake and return, 14 miles, half day or full day. Morning Eagle Falls—Piegan Pass and return, 18 miles, one day. Ptarmigan Wall and return, 14 miles, one day. Iceberg Lake and Ptarmigan Wall and return, 19 miles, one day. Going-to-the-Sun Chalets via Piegan Pass, 18 miles, one day. Going-to-the-Sun Chalets via Granite Park Chalets, 26 miles, two days. Lake McDonald Hotel via Granite Park Chalets, 28 miles, two days. Crossley Lake Camp and return, 34 miles, two days.

Garden Wall Triangle Trip; to Granite Park Chalets, Going-to-the-Sun Chalets and return to Many Glacier Hotel via Piegan Pass, 44 miles, three days. South Circle Trip; to Granite Park Chalets, Lake McDonald Hotel, Sperry Chalets, Going-to-the-Sun Chalets, and return to Many Glacier Hotel, 69 miles, five days.

ALL-EXPENSE TRIPS. Indian Pass Trip; to Crossley Lake and Goathaunt Tent Camps via horseback and launch to Prince of Wales Hotel, 36 miles on horseback, 7 miles by launch, two days. Fifty Mountain Trip; to Granite Park Chalets, Fifty Mountain and Goathaunt Tent Camps via horseback and launch to Prince of Wales Hotel, 30 miles on horseback, 7 miles by launch, three days. Inside Trail Trip; to Going-to-the-Sun Chalets, Red Eagle Tent Camp, Cut Bank and Two Medicine Chalets by horseback and bus to Glacier Park Hotel, 62 miles on horseback, 12 miles by bus, four days. North Circle Trip; to Granite Park Chalets, Fifty Mountain, Goathaunt and Crossley Lake Tent Camps and return to Many Glacier Hotel, 66 miles, five days.

FROM LAKE McDONALD. Sperry Chalets—Sperry Glacier and return, 16 miles, one or two days.

Avalanche Basin and return, 18 miles, one day.

Snyder Lake and return, 10 miles, one day.

Sperry Chalets and Lincoln Peak and return, 16 miles, one or two days.

Mt. Brown and return, 15 miles, one day.

Going-to-the-Sun Chalets via Sperry Chalets, 23 miles, two days. Many Glacier Hotel via Granite Park Chalets, 28 miles, two days. South Circle Trip; to Sperry and Going-to-the-Sun Chalets, Many Glacier Hotel, Granite Park Chalets and return to Lake McDonald Hotel, 69 miles, five days.

ALL-EXPENSE TRIPS. Fifty Mountain Trip; to Granite Park Chalets, Fifty Mountain and Goathaunt Tent Camps via horseback and launch to Prince of Wales Hotel, 40 miles on horseback, 7 miles by launch, three days.

North Circle Trip; to Granite Park Chalets, Fifty Mountain, Goathaunt and Crossley Lake Tent Camps and Many Glacier Hotel, 76 miles, five days.

FROM GOING-TO-THE-SUN. St. Mary Falls and return, 4¼ miles, half day.

Baring Basin and return, 8 miles, half day.

Virginia Falls and return, 8 miles, half day.

Mt. Reynolds Lookout Station and return, 12 miles, one day.

Florence Falls and return, 12 miles, one day.

Sexton Glacier and return, 13 miles, one day.

Gunsight Lake and Pass and return, 14 miles, one day.

Many Glacier Hotel via Piegan Pass, 18 miles, one day.

Hidden Lake and return, 21 miles, one day.

Lake McDonald Hotel via Sperry Chalets, 23 miles, two days.

Sperry Chalets and return, 32 miles, two days.

Red Eagle Tent Camp and return, 26 miles, two days.

Garden Wall Triangle Trip; to Many Glacier Hotel, Granite Park Chalets and return to Going-to-the-Sun Chalets via Logan Pass, 44 miles, 3 days.

South Circle Trip; to Many Glacier Hotel, Granite Park Chalets, Lake McDonald Hotel, Sperry Chalets and return to Going-to-the-Sun Chalets, 69 miles, five days.

ALL-EXPENSE TRIPS. Inside Trail Trip; to Red Eagle Tent Camp, Cut Bank and Two Medicine Chalets by horseback and bus to Glacier Park Hotel, 44 miles on horseback, 12 miles by bus, three days. Fifty Mountain Trip; to Granite Park Chalets, Fifty Mountain and Goathaunt Tent Camps via horseback and launch to Prince of Wales Hotel, 38 miles on horseback, 7 miles by launch, three days. North Circle Trip; to Granite Park Chalets, Fifty Mountain, Goathaunt and Crossley Lake Tent Camps and Many Glacier Hotel, 74 miles, five days.

FROM TWO MEDICINE CHALETS. Mt. Morgan Pass and return, 12 miles, one day.

Cobalt Basin and return, 10 miles, one day.

Dawson Pass and return, 12 miles, one day.

Upper Two Medicine Lake and return, 10 miles, one day.

FROM PRINCE OF WALES HOTEL. Bertha Lake and return, half day.

International Boundary and return, half day.

Sofa Mountain and return, one day.

Cameron Lake via Carthew Lake and return, one day.

FROM GOATHAUNT TENT CAMP. Brown's Pass and return, 18 miles, one day.

Indian Pass and return, 17 miles, one day.

Fifty Mountain Tent Camp and return, 20 miles, one day.

Crossley Lake Tent Camp and return, 36 miles, two days.

Fifty Mountain Tent Camp and return, 20 miles, two days.

ALL-EXPENSE TRIPS. Indian Pass Trip; to Many Glacier Hotel via Crossley Lake Tent Camp, 36 miles, two days.

Fifty Mountain Trip; to Many Glacier Hotel via Fifty Mountain Tent Camp and Granite Park Chalets, 30 miles, three days.

North Circle Trip; to Crossley Lake Tent Camp, Many Glacier Hotel, Granite Park Chalets, Fifty Mountain Tent Camp and return to Goathaunt Tent Camp, 66 miles, five days.

ALL-EXPENSE TRIPS INCLUDE MEALS AND LODGINGS.

GOOD TROUT FISHING

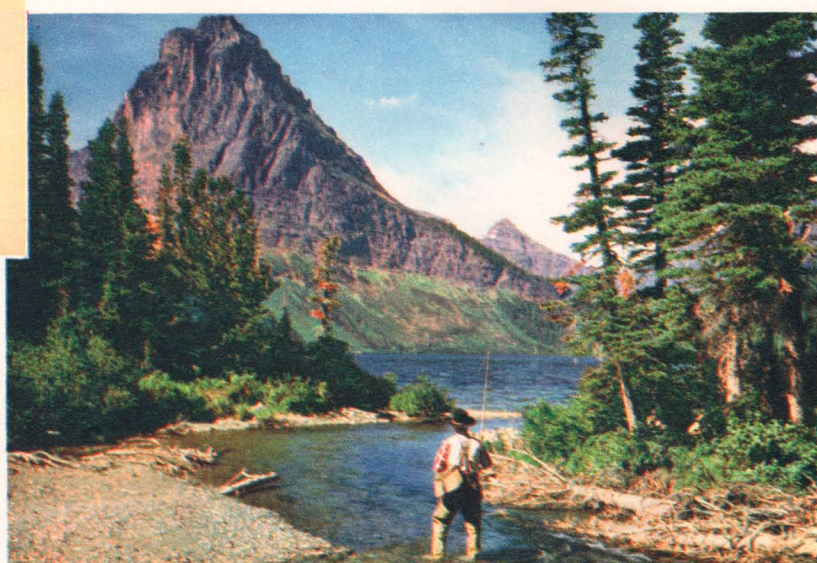
In Lakes and Streams

Near Hotels

Chalets and Camps

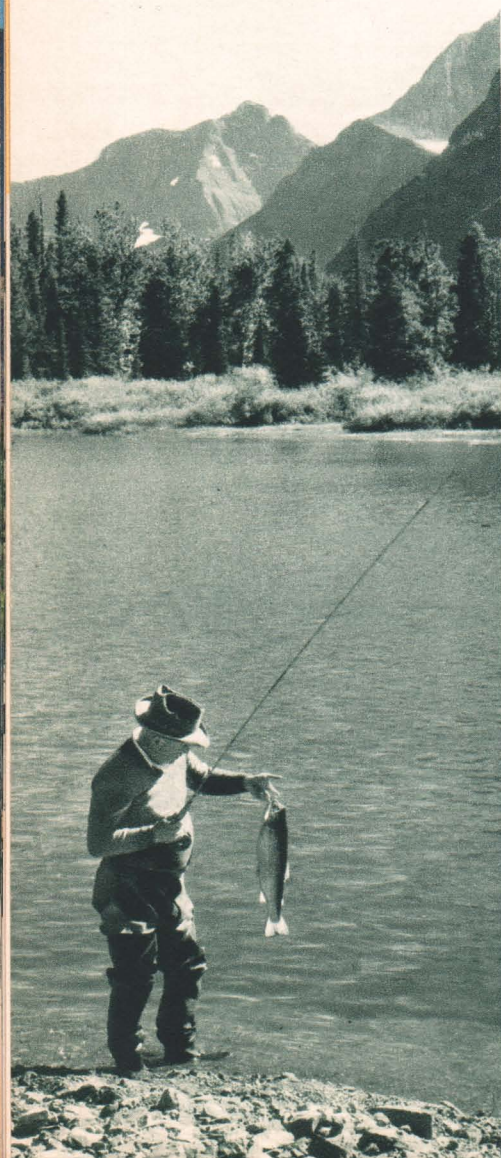


Wade into the lake, cast your fly—and then the excitement begins.

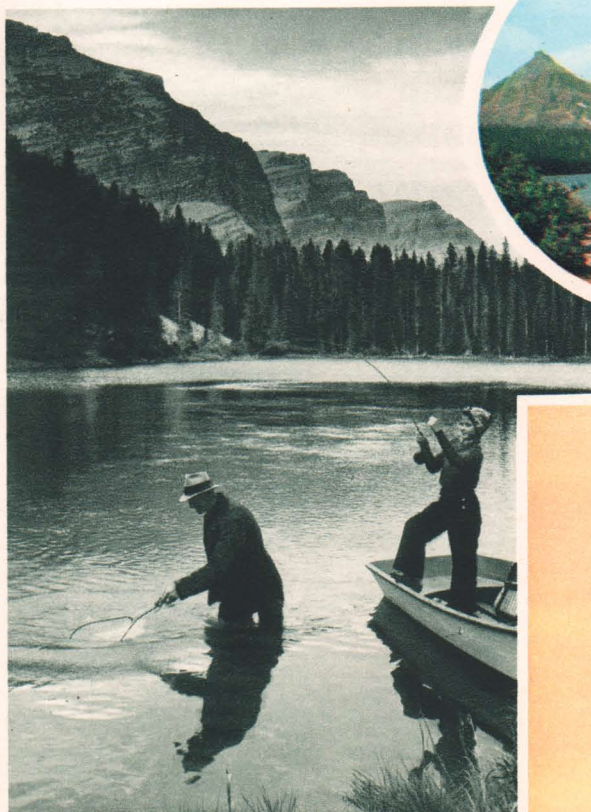


Or wade into a stream if you prefer.

Boy, what a beauty! And did he fight!



Try it where streams meet lakes.



Youngsters soon learn how it's done.

You can begin whipping the streams for trout or casting from a boat close by your hotel or chalet. Or you can go on a fishing-camping trip with guide and horses and lure gamy varieties into your creel in the wildest sort of environment. The National Park Service keeps the waters well stocked with native black-spotted or cutthroat, eastern brook, rainbow, grayling and Dolly Varden trout. These fish thrive here because of an abundance of natural fish foods and nearly constant water temperatures.



His Majesty, the Rocky Mountain Goat.



Black bear on a "sitdown."

VARIED
AND ABUNDANT
WILD LIFE
TO ENJOY



At Sperry Chalets, the goats come down to graze at night.



A Marmot pierces the air with his shrill whistle.

Big Horn Sheep "at home" in Glacier Park.

He'll tease for goodies or pose for a picture.



Glacier Park possesses practically every interesting species of the larger mammals native to the United States, except buffalo and antelope. In addition, there is a wide variety of the smaller animals which are very interesting. Probably the one animal capturing keenest interest is the white-coated Mountain Goat found in the high and snowy places. Have your camera ready, for pictures of goats are the ultimate in photographic endeavor within the park.

MOTOR COACH TOURS

In the Park and Nearby Canadian Rockies

In cooperation with the Glacier Park Transport Company and the Glacier Park Hotel Company, the Great Northern Railway has arranged for regularly scheduled park tours in connection with Empire Builder train service.

These inter-park, all-expense tours take you in ease and comfort over the famous Going-to-the-Sun Highway and through much of the best scenery in the park. Frequent stops are made to give visitors ample time to see and take pictures of the most spectacular panoramas. In addition, passengers taking any of the tours to Prince of Wales Hotel ride over the scenic Chief Mountain International Highway.

Train passengers having but one or a few days to spare for a Glacier Park visit should not miss the opportunities offered by these tours. You stay over night and get your meals at the picturesque mountain hotels and you take launch trips on the larger lakes. Cost of room and meals and launch rides is included in your tour rate.

Vacationists spending more time in the parks find one or more of these tours essential to fullest enjoyment of their stay and a marvelous prologue to trail trips.

Westbound passengers detrain at Glacier Park Station and retrain at Belton Station upon completion of tour. Eastbound passengers leave trains at Belton Station and continue their journey at Glacier Park Station. West and east tour routes are identical but in opposite directions. For convenience, tour descriptions are given from east to west. Let us trace our way through the parks on these tours.

TOUR FIVE

After lunch at Glacier Park Hotel we go by motor coach for a 12-mile scenic ride to Two Medicine Lake. On the way we stop for a short hike to Trick Falls. Two hours are spent at the lake for sightseeing and a launch ride to bring us closer to some of the colorful mountains. When the shadows grow long we start the return ride and arrive at Glacier Park Hotel for dinner, an enjoyable evening and a restful night.

Next morning after breakfast our motor coach leaves for Prince of Wales Hotel in Waterton Lakes Park, across the boundary in the Canadian Rockies. During the forenoon we travel 80 miles over the Blackfoot and Chief Mountain



Luxurious motor coaches, driven by park-trained college men, take you on wonderful tours.

Highways, via Hudson Bay Divide and Lower St. Mary Lake. After lunch at the hotel our motor coach takes us to the dock at the north end of Waterton Lake and we go for a 2-hour cruise on the 250-passenger launch, "International," to Goathaut Camp in Glacier Park, at the south end of the lake, and return. We arrive back at Prince of Wales Hotel for dinner and the night.

All of our third day is available for a saddle horse ride to Bertha Lake or other trail trips, or a motor coach trip to Cameron Lake and return. Rates for these optional side trips are very reasonable. If we prefer, we can swim, play golf, go on interesting walks—or just rest.

After breakfast on the fourth day we go by motor coach to Many Glacier Hotel, in the heart of Glacier Park grandeur. We travel 53 miles via Chief Mountain and Blackfoot Highways and arrive in time for lunch. In the afternoon we go for launch rides on Swiftcurrent and Josephine Lakes for a closer view of serrated peaks and spectacular Grinnell Mountain and Glacier. After dinner we spend a gay evening and a night of comfortable rest in preparation for another memorable day.

You'll have plenty of time to take launch rides on some of the most beautiful lakes.



Our fifth day is spent in optional, low-cost diversions. We can go for a saddle horse ride to Grinnell Glacier with an experienced glacier guide, to Iceberg Lake with its floating icebergs, or on any of several interesting one-day saddle horse excursions. We can go on hiking trips or take our fun in fishing on Swiftcurrent Lake or Lake Josephine.

On our sixth and last day we ride for 75 miles, the greater portion of which is via Going-to-the-Sun Highway, one of the world's most famous scenic mountain roads. We ride along the shore of St. Mary Lake to Going-to-the-Sun Chalets. Then up to Logan Pass through the Garden Wall (Continental Divide) and down a winding route on the west side to Lake McDonald Hotel, on Lake McDonald, where we have lunch. After lunch, our motor coach takes us to Belton Station where we continue our train journey on the Empire Builder.

TOUR FOUR

First Day. Lunch at Glacier Park Hotel, then over 12 miles of scenic highway by motor coach to Two Medicine Lake, after a stop en route for a short walk to Trick Falls. At the lake we spend two hours enjoying a launch ride and short hike to Twin Falls. In the late afternoon we return to Glacier Park Hotel for dinner and the night.

Second Day. After breakfast our motor coach takes us to Many Glacier Hotel—54 panoramic miles via the Blackfeet Highway, over the Hudson Bay Divide, down to the shore of Lower St. Mary Lake and through Swiftcurrent Valley. During the afternoon we go for launch rides on Swiftcurrent and Josephine Lakes. Lunch, dinner and night at Many Glacier Hotel.

Third and Fourth Days. Two entire days are open for optional saddle horse trips over interesting mountain trails—Grinnell Mountain and Glacier—Iceberg Lake—on any of several saddle horse trails—all at very reasonable rates, including a capable guide. Or we can explore the nearby region on walking trails—go for boat rides—fish, take pictures or do any of the many enjoyable things that are available for visitors.

Fifth Day. The motor coach ride is 75 miles, the greater portion being over Going-to-the-Sun Highway, said by many to be unmatched anywhere in the world. We ride along the shore of St. Mary Lake and stop for the view at Going-to-the-Sun Chalets. Then up to Logan Pass, over the Continental Divide at 6,675 feet, and down to



Your sightseeing ride will give you an appetite which extra good meals will satisfy.

Lake McDonald Hotel, on Lake McDonald. After lunch our motor coach takes us to Belton Station to our connection with our train, the Empire Builder.

TOUR THREE

This tour is the same as Tour Five, except that we do not have a full extra day at Prince of Wales Hotel and another full day extra at Many Glacier Hotel for the enjoyment of trail rides and the many other attractions in these two outstanding regions.

TOUR TWO

Tour Two takes us over the same route and provides the same accommodations and meals as Tour Four, except that we do not have two full extra days at Many Glacier Hotel for saddle horse trail rides, hikes, boat rides and other outdoor pleasures. Our time here is limited to one afternoon, evening and night.

TOUR ONE

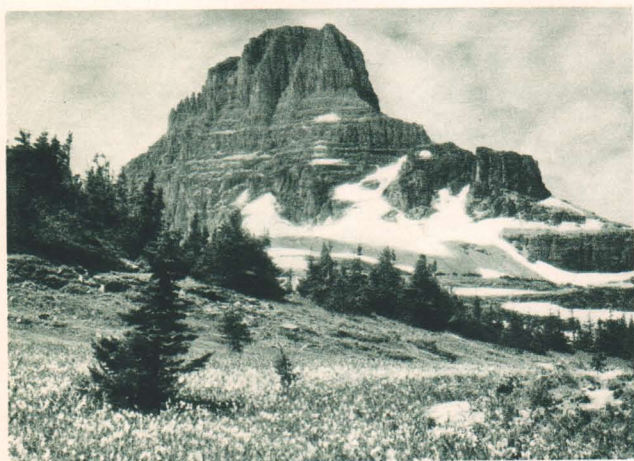
The first day of Tour One is the same as all others. Next morning, after breakfast, we go for a motor coach ride of 85 miles, over Blackfeet and Going-to-the-Sun Highways, described in other tours. After lunch at Lake McDonald Hotel our motor coach takes us to Belton Station where we resume our travel on the Empire Builder.

TOUR THREE NORTH

Glacier National Park, as the gateway to the Canadian Rockies, offers both westbound and eastbound Great Northern train passengers a scenic tour from Belton, Montana, through Glacier Park and northward across the International Boundary to the Prince of Wales Hotel in Waterton Lakes Park.

Nights are spent at Lake McDonald Hotel, Many Glacier Hotel and Prince of Wales Hotel. From the latter, passengers can travel north to Banff, Lake Louise, Columbia Icefields and Jasper Park.

Passengers going west or east via Canadian rail lines can take this motor coach tour in reverse direction, connecting with Great Northern's Empire Builder at Belton Station. Your railway ticket agent or tour bureau will supply complete travel and motor tour information.



Mt. Clements stands at the crest of Logan Pass, on Going-to-the-Sun Highway.

A NATION'S PLAYGROUND

Millions of Years In the Making

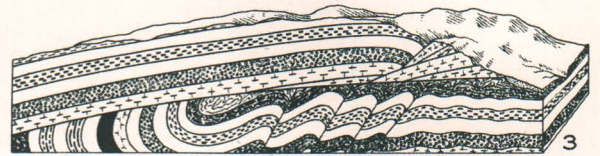
The spectacular beauty of the Glacier and Waterton Lakes section of the Rocky Mountains is partially explained by the structural history of the country. The rocks here tell an almost incredible story. The twisted, tilted and sometimes folded rocky layers or strata which lie from a mile to two miles above sea level were, several hundred million years ago, the bed of a shallow sea covering this region.

This portion of the earth's crust was lifted by tremendous pressure from deep within the earth and fracturing or "faulting" occurred. The rising mountains split lengthwise along their crests, and the western edge rose thousands of feet higher than the eastern edge. Under continuous, irresistible pressure the western edge overlapped the eastern edge for from fifteen to thirty-three miles, producing the phenomenon known as the "Lewis overthrust fault."

Then during many more thousands of years, the higher strata were eroded away until only the most ancient and colorful shales, argillites, limestones and sandstones rested on the younger layers which were once plains adjoining the shallow sea.

Later more snow fell than could melt during short summers. It packed into ice in the rocky basins and glaciers were born. This ice literally pried blocks of rock from the mountains and dug valleys higher and higher. As the glacial ice moved slowly down the mountains it carried loose rock material. This abrasive material gouged out the mountain slopes and valleys.

Chief Mountain is one of the best visible examples of ancient rocks resting on shale of a much younger age, forced upward and over adjacent horizontal rock layers.



The first of these diagrams shows sea bed layers being arched upward. In 2, the surface has bent so far that it has broken and older layers are moving over younger ones. Figure 3 shows a section after the thrust ended. The mountains as they are today, with rocks carved into peaks and valleys, are shown in Figure 4.

Gradually the valleys were thus moulded until they acquired the U-shaped character of today.

East of the Continental Divide precipices of immense height are characteristic of the mountain background. The extraordinarily diversified country below these serrated peaks and walls is crowded with glacier and snow-fed lakes and lakelets; heaped with lesser mountains and criss-crossed with streams. On the west side the country falls away gradually. The lakes are long and slender and are surrounded by superb forests.

With this brief story of a geological change in mind, the surprisingly formed and colored landscapes will be understood when you get there.



THINGS EVERY VISITOR SHOULD KNOW

WHAT TO WEAR

Glacier and Waterton Lakes Parks give you an opportunity to discard the conventionalities of dress that govern many vacation places. Here you can be yourself and follow the rule, "Comfort First." Outing clothes are preferred; warm clothing is essential. An overcoat, wool jacket or sweater is desired for motor coach tours in the cool mountains. For trail trips of a week or more, afoot or horseback, the following are about all you'll require in addition to toilet articles:

- 1 Suit of warm outing clothes.
- 1 Pair of riding breeches or knickers.
- 1 Sweater or wool jacket.
- 1 Felt hat or cap.
- 2 Pairs of cotton, wool or leather gloves.
- 2 Suits of underwear, either heavy cotton or light wool.
- 3 Pairs of wool sox. If wool next to the skin annoys you, use light-weight cotton sox under the wool.
- 1 Pair of stout riding or walking shoes. Do not use hob-nails or calks; except on hiking trips. They are not necessary; are dangerous if horseback riding and are not allowed in lobbies or dining rooms of hotels.
- 1 Rubber blanket or raincoat if on walking tour. Water-proof slickers are furnished free with saddle horses and are always on the saddle, ready for instant use.

Haversacks or cloth dunnage bags can be purchased at park stores. A pair of sun glasses is a wise precaution when on the water, glaciers or snow fields.

MAIL—TELEGRAPH—TELEPHONE

Mail for guests, except at Lake McDonald and Prince of Wales Hotels, should be addressed in care of Glacier Park Hotel Company, Glacier Park, Montana. If you are in the interior of the park and have left forwarding instructions, mail will be forwarded accordingly. Mail for guests at Lake McDonald Hotel should be addressed in care of the hotel, Lake McDonald P. O., Montana; for guests at Prince of Wales Hotel, in care of the hotel, Waterton Lakes Park, Alberta, Canada. The same procedure for addressing telegrams should be followed as that outlined for mail service. Telegrams and telephone calls will be transmitted to vacationists in the interior of the park at regular telephone tariff rates.

HAVEN FOR HAY FEVER SUFFERERS

Persons afflicted with hay fever find welcome relief in the pure, pollen-free air of Glacier Park.

MEDICAL SERVICE

Physicians, trained nurses, or both, and medical supplies, are available at all four hotels in the parks and Going-to-the-Sun Chalets.

RELIGIOUS SERVICES

At Glacier Park Hotel, Catholic Services are held each Sunday morning at 10.00 A. M., and usually Protestant Services at 8.30 P. M. At Many Glacier Hotel, Catholic Services only at 6.00 A. M.

KEEP YOUR CAMERA LOADED

Wherever you ride or walk—wherever you look—you'll see wonderful picture compositions. You'll want to "shoot" your friends in these



Warm clothing with comfortable shoes is the best garb for enjoyment of the park.

beautiful settings. You'll want to capture the gorgeously costumed Blackfeet Indians on film—and there'll be opportunities for shots of friendly animals, such as deer, bears, marmots, mountain sheep. With luck you may get a good picture of the agile Rocky Mountain goats. If you have both still and movie cameras, bring both. And if you go in for color film work, these parks will supply material for the best pictures you've taken. Supplies and finishing work are available at the hotels.

WHERE TO FISH

Generally speaking, almost anywhere in Glacier or Waterton Lakes Park. It's a good plan to inquire where the trout are most active and what flies they are taking. If trout fishing is your principal vacation interest, write in advance to Passenger Traffic Department, Great Northern Railway, St. Paul, Minn., or during the park season to the General Manager, Glacier Park Hotel Company, Glacier Park, Montana.

ALL-EXPENSE PARK VACATIONS. OR TOURS

Information about time schedules, cost of all-expense tours, saddle horse trail trips, hotel accommodations and rates for services of all kinds as authorized by the National Park Service, U. S. Dept. of the Interior, and the Canadian Parks Administration, is contained in a folder you can have on request from any railway ticket agent or travel bureau or by writing to Great Northern Railway, Passenger Traffic Department, St. Paul, Minn.

Tickets for all-expense trail trips and motor coach tours enable you to pay for all services, except optional side trips, in one sum, and thereby avoid the necessity of carrying funds with you for payment of each service as rendered, including saddle horse, motor coach and launch transportation, trail guides, meals and lodgings. You know the exact cost in advance and can plan accordingly.

PARK FACILITIES

The Glacier Park Hotel Company operates, independently, all hotels, chalets, Swiftcurrent Cabins and the launch on Waterton Lakes. The Canadian Rockies Hotel Company, Limited, operates, independently, the Prince-of-Wales Hotel at Waterton Lakes, Alberta, Canada. All other facilities are operated by independent concessioners, and the Great Northern Railway, Glacier Park Hotel Company and the Canadian Rockies Hotel Company, Limited, in issuing and selling tickets for all services in Glacier National Park and Waterton Lakes Park act only as agents for the parties or concessioners providing the services.

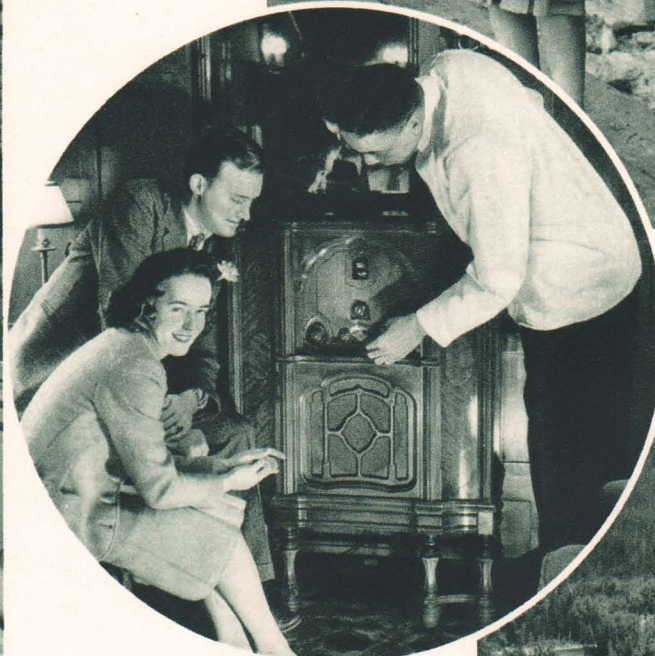
THE EMPIRE BUILDER

Famous
Transcontinental Train
Direct West or East to
GLACIER NATIONAL PARK



After a few hours of enjoyable travel they'll be in Glorious Glacier Park.

The Empire Builder along the Flathead River, bordering Glacier Park.

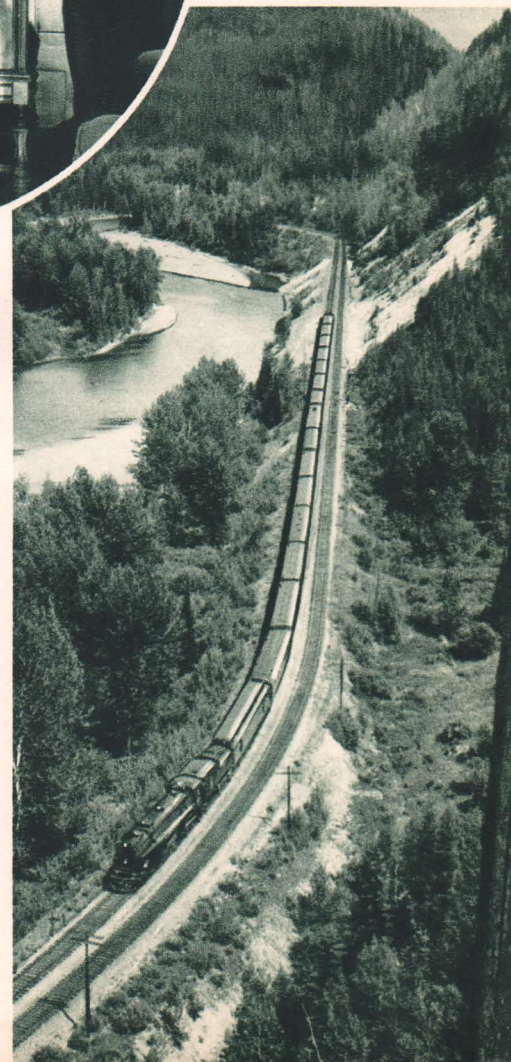


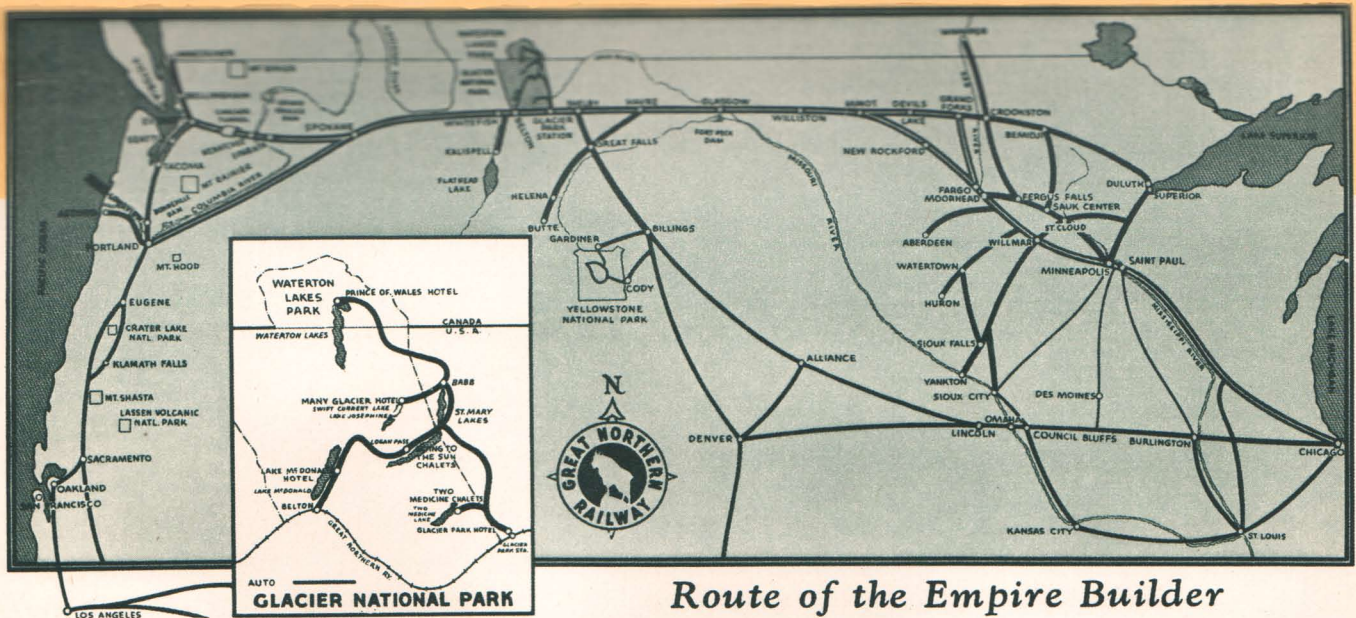
The lounge car is a club on wheels.

Modern luxury coaches are year 'round equipment on the air-conditioned Empire Builder.



Empire Builder dining car service has made thousands of friends for the Great Northern Railway.





Route of the Empire Builder

**FOR DETAILED INFORMATION ABOUT TOURS TO ALL POINTS IN THE WEST—
RATES, RESERVATIONS OR STOP-OVERS—INQUIRE AT ANY OF THE
FOLLOWING GREAT NORTHERN RAILWAY TRAVEL OFFICES:**

BELLINGHAM, WASH. 212 Kulshan Bldg.
 BILLINGS, MONT. 311 Electric Bldg.
 BOSTON, MASS. 203 Walker Bldg.
 BUFFALO, N. Y. 797 Ellicott Sq.
 BUTTE, MONT. 513 Metals Bank Bldg.
 CHICAGO, ILL. 142 So. Clark St.
 CINCINNATI, OHIO 1008 Traction Bldg.
 CLEVELAND, OHIO 508 Hippodrome Bldg.
 DALLAS, TEXAS 1004 Southwest Life Bldg.
 DENVER, COL. 601 Railway Exchange
 DES MOINES, IOWA 305 Equitable Bldg.
 DETROIT, MICH. Lobby, Transportation Bldg.
 DULUTH, MINN. 302 W. Superior St.
 EVERETT, WASH. Great Northern Station
 FARGO, N. D. 702 Black Bldg.
 GRAND FORKS, N. D. Great Northern Station
 GREAT FALLS, MONT. First Nat'l Bank Bldg.
 HELENA, MONT. First Nat'l Bank & Trust Bldg.
 KANSAS CITY, MO. 544 Railway Exch. Bldg.
 KLAMATH FALLS, ORE. Great Northern Station
 LEWISTOWN, MONT. Great Northern Station
 LOS ANGELES, CAL. 108 West 6th Street
 MILWAUKEE, WIS. 814 Majestic Bldg.
 MINNEAPOLIS, MINN. 640 Marquette Ave.

MINOT, N. D. Great Northern Station
 NELSON, B. C. 387 Baker Street
 NEW YORK, N. Y. 595 Fifth Avenue
 OAKLAND, CAL. 611 Central Bank Bldg.
 OMAHA, NEB. 938 First Nat'l Bank Bldg.
 PHILADELPHIA, PA. 504 Finance Bldg.
 PITTSBURGH, PA. 602 Oliver Bldg.
 PORTLAND, ORE. 530 Amer. Bank Bldg.
 SACRAMENTO, CAL. 223 Forum Bldg.
 ST. LOUIS, MO. 520 Boatmen's Bank Bldg.
 ST. PAUL, MINN. 4th & Minnesota Sts.
 SAN FRANCISCO, CAL. 679 Market St.
 SEATTLE, WASH. 1400 Fourth Avenue
 SIOUX CITY, IOWA 403 Commerce Bldg.
 SIOUX FALLS, S. D. 503 East 8th St.
 SPOKANE, WASH. Davenport Hotel
 SUPERIOR, WIS. Union Station
 TACOMA, WASH. 116 So. Ninth St.
 TORONTO, ONT. 507 Royal Bank Bldg.
 VANCOUVER, B. C. 683 Granville St.
 VICTORIA, B. C. 916 Government St.
 WASHINGTON, D. C. 303 Nat'l Press Bldg.
 WENATCHEE, WASH. Great Northern Bldg.
 WINNIPEG, MAN. 414 Main Street

A. J. DICKINSON, PASSENGER TRAFFIC MANAGER, ST. PAUL, MINNESOTA

THE EMPIRE BUILDER

Famous
Transcontinental Train
Direct West or East to
GLACIER NATIONAL PARK



After a few hours of enjoyable travel they'll be in Glorious Glacier Park.



The Empire Builder along the Flathead River, bordering Glacier Park.

The lounge car is a club on wheels.

Modern luxury coaches are year 'round equipment on the air-conditioned Empire Builder.



Empire Builder dining car service has made thousands of friends for the Great Northern Railway.

