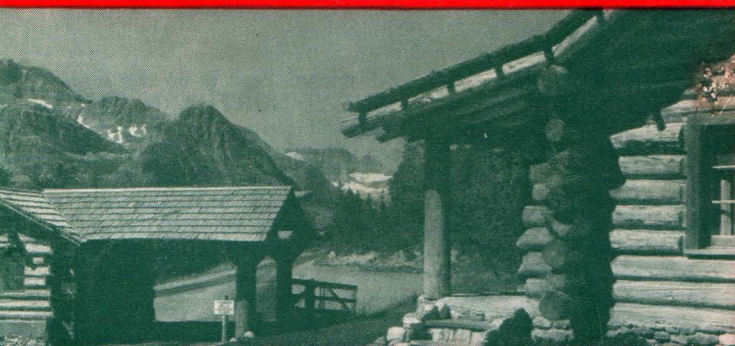
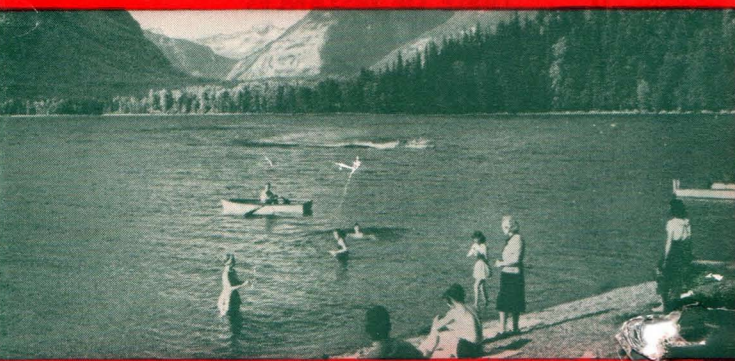


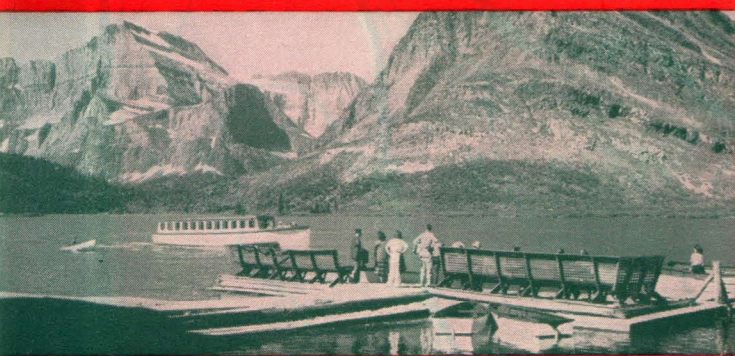
Land of a Thousand Thrills



The National Park Service maintains checking and information stations at all park highway entrances.

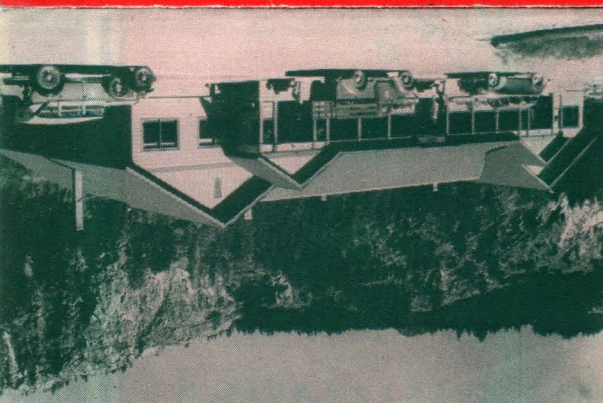


GLACIER'S LAKES provide vacation fun in sightseeing launches and on the shores of jewel-colored lakes.

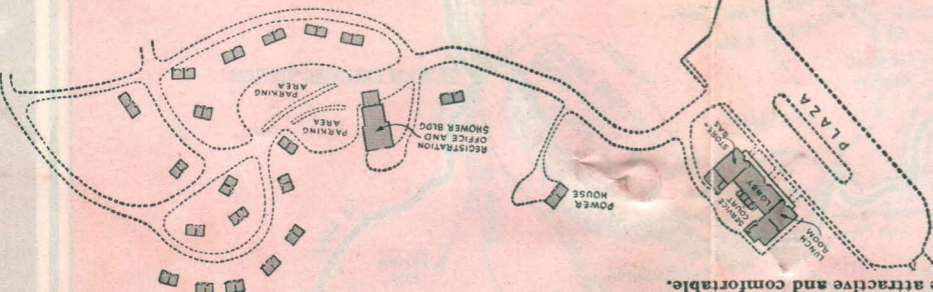


Swiftcurrent Lake is ringed by high mountains. Sightseeing launches operate on many of the Park's lakes.

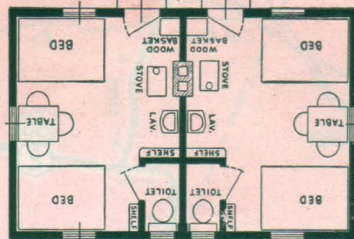
6103-3-55—PRINTED IN U.S.A.



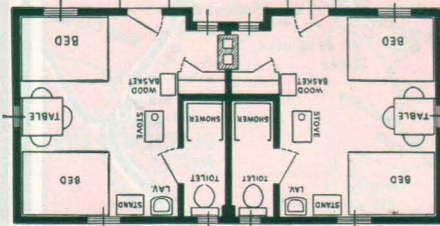
COFFEE SHOP, general store and service station at Rising Sun Cabins.



Floor Plan of Cabin without Shower Bath.

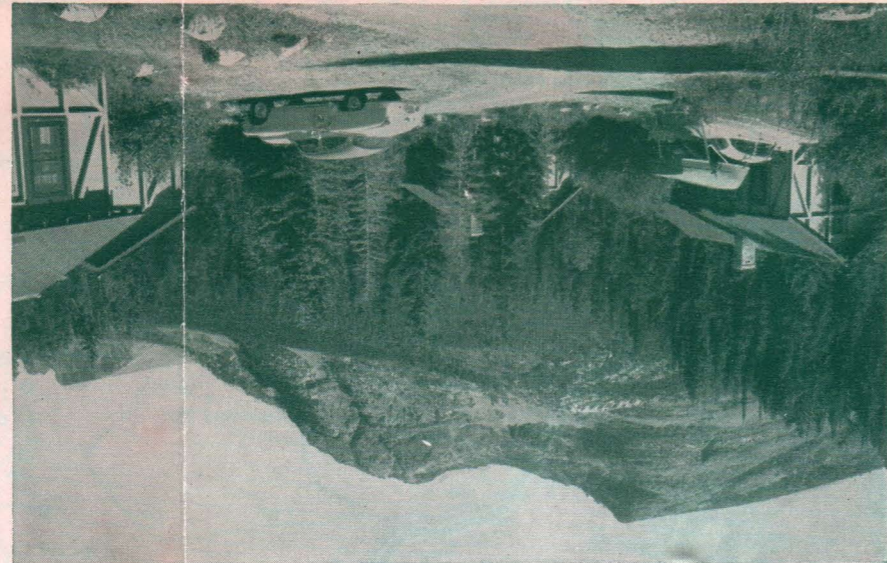


Floor Plan of Cabin with Shower Bath.



RISING SUN CABIN CAMP

OPEN JUNE 15 TO SEPTEMBER 15



Rising Sun Cabins and furnishings are attractive and comfortable.

COFFEE SHOP. Serves popular priced meals. Club breakfasts, plate lunches and dinners—also a la carte service with a variety of selections at moderate prices. Adjoining the Coffee Shop is a spacious lobby with fireplace and a soda fountain.

See Supplement Sheet, Paragraph No. 2 for Complete Information

RATES

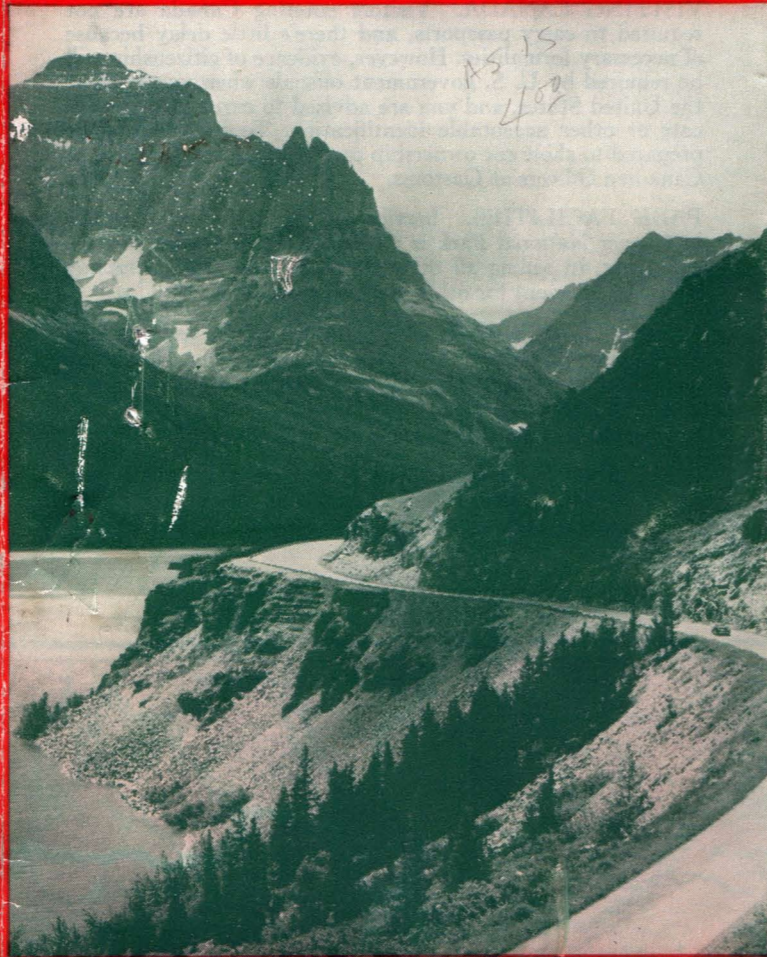
Rising Sun Cabins are located on Going to the Sun Highway at Rock Creek along the north shore to St. Mary Lake, about three miles east of Going to the Sun Point, or seven miles west of St. Mary Junction. No cooking is permitted in cabins. All cabins have two non-connecting rooms either with or without shower baths. Cabins without shower have running cold water. Cabins with shower have running cold and hot water. All rooms are equipped with lavatory, toilet, electric lights, heating stove, wood, table, chairs, bed, mattress, pillows and bedding.

CABIN CAMPS

Glacier National Park

IN MONTANA

Full information about cabins, stores and park accommodations

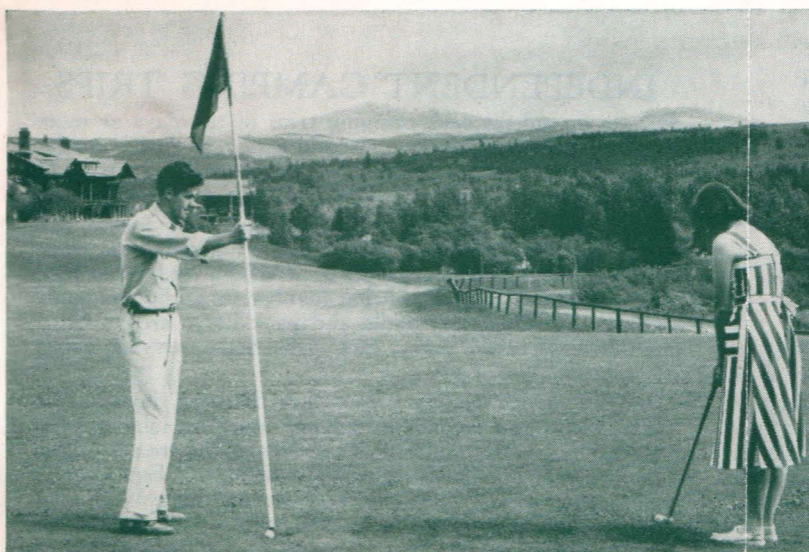


Going-to-the-Sun Highway Along St. Mary Lake

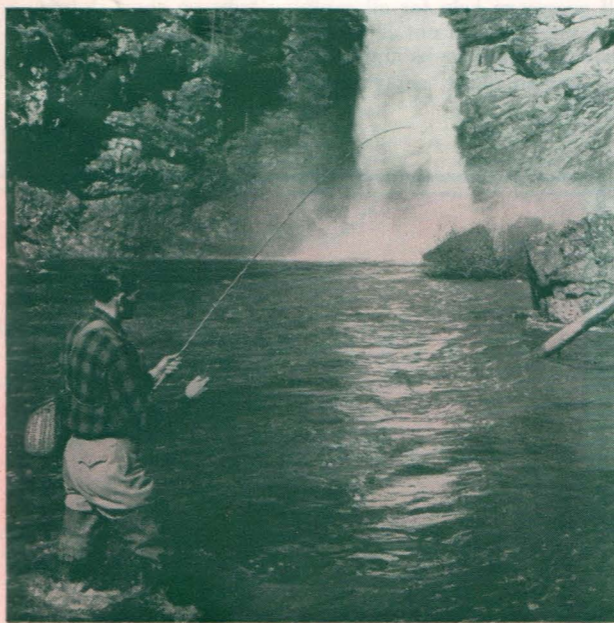
Glacier National Park is situated in the Rocky Mountains of Montana on the main transcontinental line of GREAT NORTHERN RAILWAY.



THOUSANDS OF THINGS TO SEE AND DO



GOLF in the mountains is an exhilarating experience. Courses are located at Glacier Park Hotel and in Waterton Lakes Park.

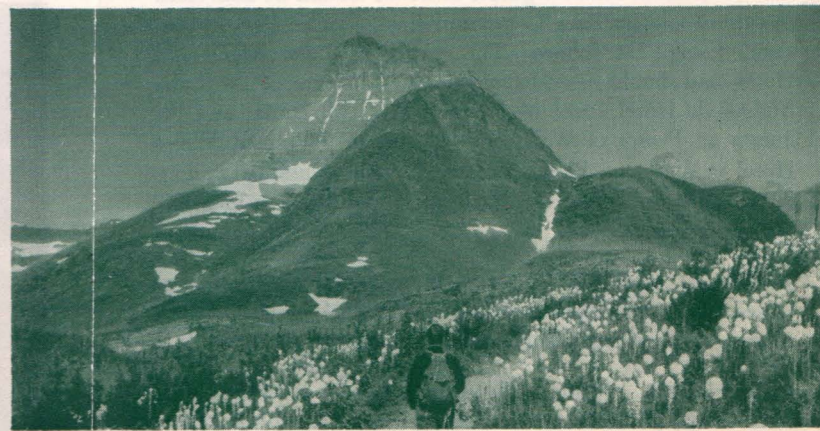


FISH abound in Glacier Park lakes. No license needed—and equipment and boats may be rented.

Never a dull day in the Land of the Shining Mountains—Glacier National Park in Montana and Waterton Lakes Park in Canada. Rugged mountain peaks soar mile-high above turquoise lakes . . . alpine meadows blaze with colorful flowers . . . a thousand miles of trail beckon to the adventurous . . . 60 glaciers, 250 lakes and countless streams and waterfalls make every turn a scenic thrill. Many of the park's finest features can be seen from broad highways—still others from launches, and short walks from camps and hotels reveal still more wonders.



ON THE TRAIL over Glacier's thousand miles of mountain paths. Glacier saddle horses are trustworthy.



HIKING takes you to high passes through meadows brightened by gay flowers. Many trails start at tourist camps.

COFFEE SHOP. Serves popular priced meals. Club breakfasts, plate lunches and dinners—also a la carte service, with a variety of selections at moderate prices.

See Supplement Sheet, Paragraph No. 1 for Complete Information

CABIN RATES

Swiftcurrent Cabins are located near Swiftcurrent Lake, at the foot of Grinnell Peak, 1 1/2 miles west of the auto entrance to the Many Glacier Hotel. Swiftcurrent Cabins provide accommodations in two and three-room cabins. Guests may prepare light meals or enjoy good food at the Coffee Shop. Three-room cabins have a kitchen and one private bedroom with one double bed. Two-room cabins have a kitchen and two private bedrooms with one double bed. Each bed is provided with spring, mattress, pillows and bedding. Combination heating and cooking stove, table, benches, sink, running cold water, electric lights and wood are furnished. Cabins are suitable for light housekeeping; however, there are no cooking utensils or dishes furnished, but a limited assortment of both are sold at the store. A central comfort station with free shower baths is provided for cabin occupants.

Swiftcurrent Cabins are arranged in community groups, separated to assure freedom from congestion.

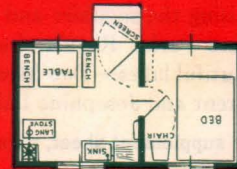


SWIFTCURRENT CABIN CAMP

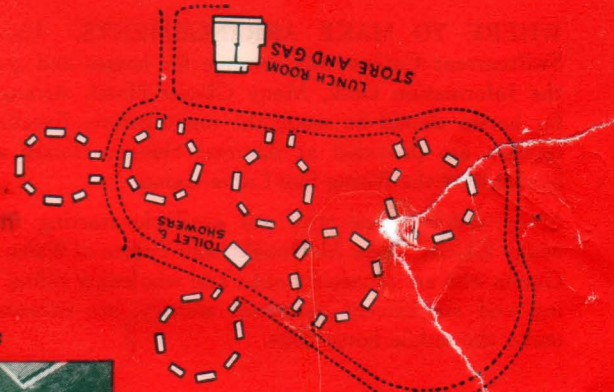
OPEN JUNE 15 TO SEPTEMBER 15



Floor Plan of Three-Room Cabin.



Floor Plan of Two-Room Cabin.



MOUNTAIN PANORAMA from the front door of a cabin at Swiftcurrent Camp.



EXCELLENT CABIN ACCOMMODATIONS FOR TOURISTS

TWO ATTRACTIVE GROUPS—ONE ON SWIFTCURRENT LAKE; THE OTHER ON ST. MARY LAKE

HELPFUL INFORMATION FOR TOURISTS IN GLACIER NATIONAL PARK

CAR PERMIT. A nominal government fee is collected at government checking stations within Glacier National Park which permits a car to be operated in Glacier Park for the season with "in and out" privileges. Only one fee is collected. When entering Waterton Lakes National Park at Waterton Lakes, Alberta, Canada, a government fee is collected which permits the holder similar privileges.

See supplement sheet, paragraph #3 for cost.

CAR SERVICE. Gas and oil are available at hotels, and cabin camps and at other convenient points bordering the park. Authorized and approved garage service at Glacier Park and Many Glacier hotels.

CAMERAS. Bring your still or movie camera for marvelous pictures, either black and white or color. Films are available at hotels and cabin camps. Finishing work accepted.

FISHING. Glacier Park offers good fishing. The lakes and streams are kept well-stocked with native black spotted or cutthroat, eastern brook and rainbow trout. (Montana state license required outside of Park.) Please inquire as to limit of catch and season.

MAIL. Registered guests at Rising Sun Cabin Camp and Swiftcurrent Cabin Camp can have mail addressed to them at either place in care of Glacier Park Company, East Glacier Park, Montana. Mail for guests at hotels should be addressed in care of Glacier Park Company, East Glacier Park, Montana. Except as follows: For guests at Lake McDonald Hotel mail should be addressed to them in care of the Lake McDonald Hotel, Lake McDonald, P.O., Montana; and for guests at Prince of Wales Hotel, care of Prince of Wales Hotel at Waterton Park, Alberta, Canada. Guests traveling in the Park or leaving the Park are urged to leave forward-addresses.

MEDICAL AID. A Physician is available to all hotels in Glacier Park but is stationed at Glacier Park Hotel. Trained nurses, and medical supplies, are available at all hotels.

HAY FEVER. Persons afflicted with hay fever find welcome relief in the pollen-free air of Glacier and Waterton Parks.

TRAIL RIDING IS GREAT FUN

Trail riding, comfortably seated in a real western saddle on a trustworthy western horse, is both a popular and health-giving sport in Glacier National Park. Even those who have never ridden a horse quickly get the knack of it and become enthusiasts.

Within the Park there are more than a thousand miles of trails for long or short rides into breath-taking beauty reached only by hiking or saddle horse. Friendly trail-wise horses and plenty of guides who know the trails as you know your home town streets are available to visitors.

SCORES OF SHORT TRIPS. Opportunities for trail riding are almost limitless, ranging from half day rides to the longer trips. Considering the rare enjoyment of horseback riding in this "sublime wilderness," rates are very reasonable.

See supplement sheet, paragraph #4 for cost.

WHERE TO MAKE ARRANGEMENTS. Visitors at Swiftcurrent Cabins may arrange for horses and guides at the Information Desk, Many Glacier Hotel. Arrangements for horses should be made the night before. Excellent box lunches are provided at nominal charge. Horses are not available at the Rising Sun Cabin Camp.

Many saddle horse trips are available starting from the Many Glacier, Lake McDonald, and Prince of Wales Hotels. Guests who are physically able, and who enjoy riding or hiking, and magnificent mountain scenery, are encouraged to make the saddle horse trips.

CRUISES ON BEAUTIFUL LAKES

Many of the most spectacular panoramas are seen while cruising the sapphire and jade lakes in Glacier and Waterton Lakes Parks. Regular launch service is maintained on five beautiful lakes—Two Medicine Lake, Lake McDonald, Swiftcurrent and Josephine Lakes, and Waterton Lake.

See supplement sheet, paragraph #5 for cost.

ROW BOATS. Row boats are available at Many Glacier Hotel (Swiftcurrent and Josephine Lakes), Lake McDonald Hotel, and Two Medicine Lake. Row boats with outboard motors may be had at some of these locations. Inquire at hotel Information Desks.

See supplement sheet, paragraph #5 for cost.

SIGHTSEEING MOTOR COACH TOURS

Many motorists, after driving to the Park, enjoy the opportunity to "let George do it" and revel in the scenic grandeur from the modern, comfortable observation motor coaches. A carefree tour over the marvelous Park highways is to many "just what the doctor ordered." Inquire at hotel Information Desks for information concerning low-cost all-expense tours and point-to-point trips.

INDEPENDENT CAMPING TRIPS

Private or independent camping trips of ten days or more may be arranged at rates quoted in paragraph #6 of supplement sheet. Special arrangements can be made for trips of less than ten days. Arrangements must be made in advance.

A special guide and one cook, including their horses, are furnished parties of one or two persons. For parties of three to five persons, a guide or helper is added. For each additional three persons or any part of that number, an additional guide or helper is added. A saddle and pack horse are provided each member of the party, each pack horse carrying about 150 pounds.

Camping parties making trips of less than ten days will be charged an extra day for assembling and dispersing guides, horses, and camp equipment in the event same are not immediately available. Camping parties starting or dispersing at points other than Many Glacier Hotel and Lake McDonald Hotel will be charged for time consumed in traveling from nearest above-named point to starting or dispersing point. If considerable personal luggage or large quantities of supplies are desired to be carried or additional help is required, extra pack horses will be furnished at additional cost.

The outfitters endeavor and usually are able to furnish cooks and all necessary help for all camping trips on short notice, but at least ten days notice should be given to permit time for securing proper cooks and assistants.

See supplement sheet, paragraph #6 for rates and additional information.

RELIGIOUS SERVICES. Catholic and Protestant services at the Glacier Park, Many Glacier, and Lake McDonald Hotels are held each Sunday. Both Catholic and Protestant services are held at Waterton Village.

See supplement sheet, paragraph #7 for full information.

VISITING CANADA. Visitors entering Canada are not required to carry passports, and there's little delay because of necessary formalities. However, evidence of citizenship will be required by U. S. government officials when you re-enter the United States, and you are advised to carry birth certificate or other acceptable identification. Tourists should be prepared to show car ownership card if requested by U. S. or Canadian Officers at Customs.

PARK FACILITIES. Service at the hotels, and cabins in Glacier National Park is furnished by the Glacier Park Company. In selling all other Park services the Company acts only as agent for other Park concessioners.

HOTELS. The hotels in Glacier Park and Waterton Lakes Park are operated on the American Plan. The Hotels are the Glacier Park, Many Glacier, Lake McDonald and Prince of Wales, the latter in Canada.

See supplement sheet, paragraph #8 for hotel rates.

MAPS AND FOLDERS. Helpful folders and leaflets published by the National Park Service, are issued free at the Park checking stations at highway entrances to the Park.

TRAIN SERVICE. Glacier National Park is on the main transcontinental line of the GREAT NORTHERN RAILWAY. The streamlined Western Star provides swift daily service from the east (Chicago, Minneapolis, St. Paul) and from the west (Seattle, Portland, Spokane). From June 15 thru September 10, daily stops are made at Glacier Park Station, Eastern rail entrance, and Belton, Western rail gateway to the Park. The streamlined Western Star provides economical, comfortable coaches and a variety of Pullman accommodations, lounge car, and dining car.

The Great Northern Railway publishes Glacier Park booklets, folders and maps, copies of which may be had at the hotels or on request to ticket offices, or Passenger Traffic Manager, St. Paul 1, Minnesota.

TABLE OF DISTANCES

From	Glacier Park Hotel	Two Medicine	Lake McDonald Hotel	Many Glacier Hotel	Swiftcurrent Cabins	Rising Sun Cabins	St. Mary Junction	P. W. Hotel
Glacier Park Hotel	0	12	74	53.6	54.8	40	32	80
Two Medicine	12	0	78	57.6	58.8	44	37	85
Lake McDonald Hotel via L.P.	74	78	0	61.6	62.8	34	41	89
Lake McDonald Hotel via #2	70	82	0	123.6	124.8	110	103	151
Many Glacier Hotel	53.6	57.6	61.6	0	1.2	27.6	20.6	50.6
Swiftcurrent Cabin Camp	54.8	58.8	62.8	1.2	0	28.8	21.8	51.8
Rising Sun Cabin Camp	40	44	34	27.6	28.8	0	7	55
St. Mary Junction	32	37	41	20.6	21.8	7	0	48
Prince of Wales Hotel	81	85	89	50.6	51.8	55	48	0

