

WONDROUS WILDERNESS

carved by ancient glaciers...
magnificently preserved for
your enjoyment!

A rare kingdom of glacier-clad mountains... radiant colors... jewel-like lakes... plunging waterfalls... soaring cliffs... hidden valleys... fascinating wildlife. A wonderland, created a million years ago by enormous moving sheets of ice—still untamed, unchanged, unspoiled.

This is Glacier National Park, cradled high on the backbone of the Rockies in western Montana.

Here you see fantastic sights, duplicated nowhere else on earth. Here you breathe cool, clean, pollen-free air as you choose from a myriad of pleasures—from golf, nature study and water sports to angling for fighting trout. And here you enjoy true wilderness "adventure" with the home-sweet-home comforts of restful lodging and superb food just a few steps away!

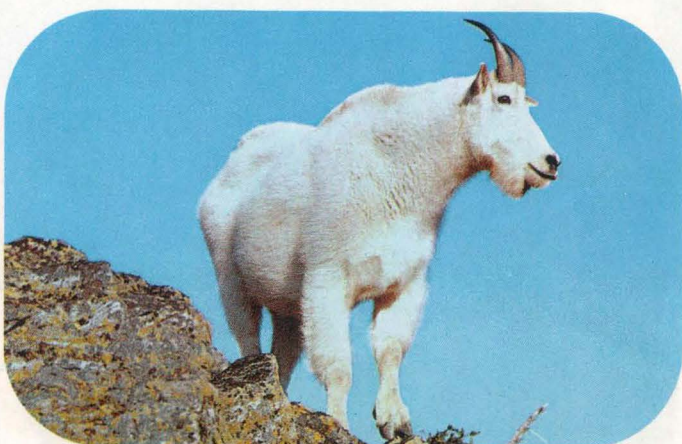
Great Northern's streamlined Western Star helps launch you on this "escape" with fast, direct service to Glacier Park entrances, both East and West. Open-top motor coaches, cruising 100 miles of smooth highways and stopping at fine hotels, make touring and sightseeing a joy. Over 1000 miles of well-marked trails afford easy and even closer access to Glacier's scenic splendors via foot or horseback. Another sightseeing delight: cruise in comfort on six beautiful lakes—McDonald, Two Medicine, St. Mary, Waterton, Swiftcurrent, Josephine.

Located in the heart of Western Vacationlands, you'll find Glacier National Park both a natural and ideal starting point for a whole summer of travel thrills. Welcome!



Mount Gould, mirrored in Lake Josephine's serene waters, thrusts its rugged head squarely skyward. Grinnell Glacier adjoins this mountain—an easy hike or horseback ride from Many Glacier Hotel.

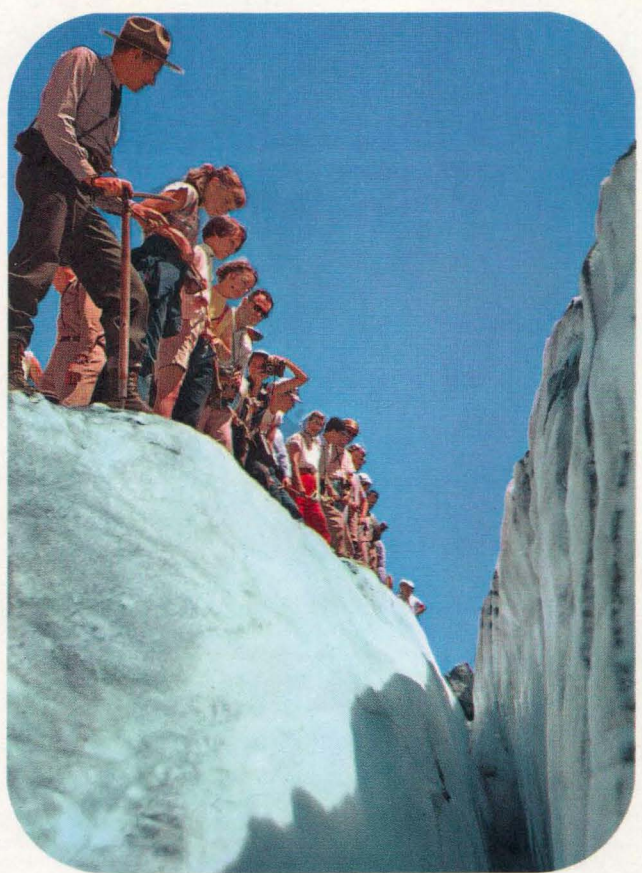
GREAT THINGS TO SEE!



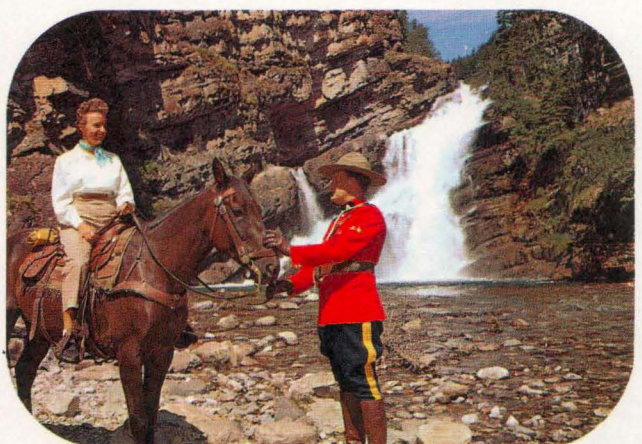
Rocky Mountain goats, Great Northern's trademark, are often seen high up on craggy peaks. Other wildlife includes moose, deer, elk, bear, coyote, bighorn sheep, golden eagle.



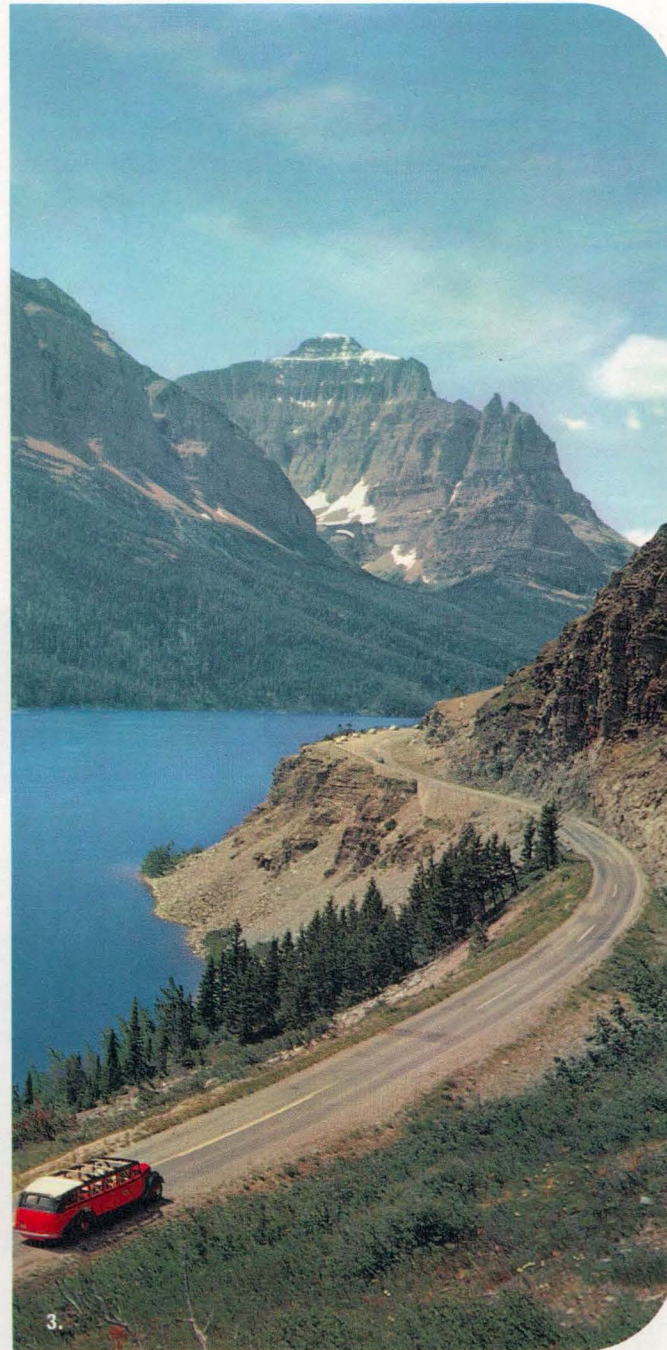
Beargrass is official park flower. Over a thousand other wildflower species brighten Glacier's many trails, roads. Look for Indian paintbrush, Glacier lilies, lupine, Monkey Flowers, Beardtongue.



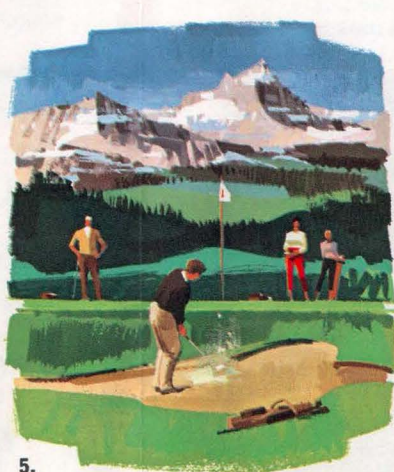
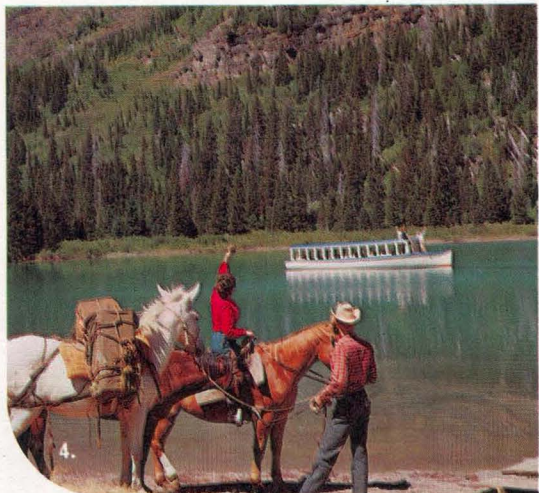
Broad crevasse in Grinnell Glacier is 50 feet deep... hence the safety rope for visitors (guided by a National Park Service ranger-naturalist).



Cameron Falls, near Prince of Wales Hotel, is a scenic highlight in Canada's colorful Waterton Lakes National Park (Glacier's good neighbor to the north). Crossing the border is easy.

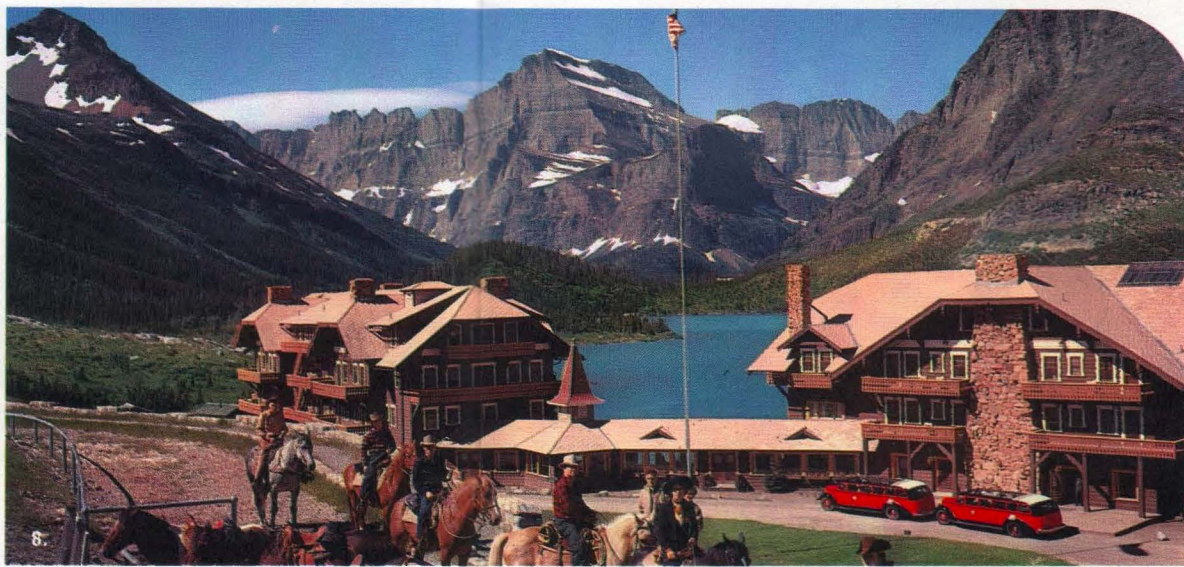


GREAT THINGS TO DO!

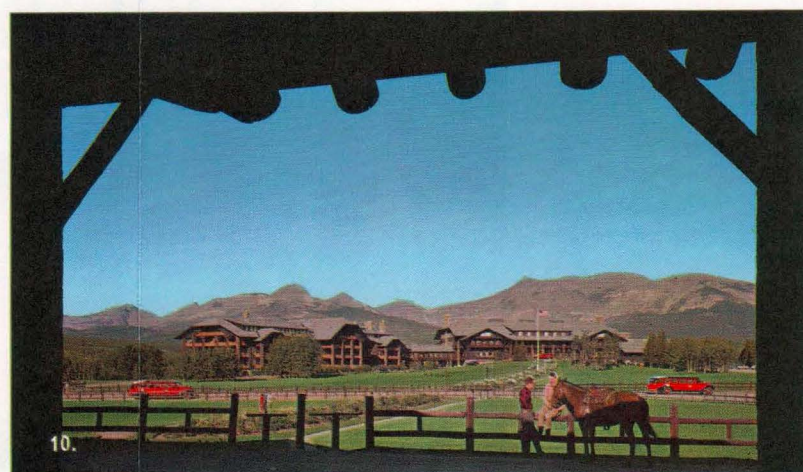


1. **Fishing's fun** for young and old in sparkling lakes like this (Lake Josephine, a short walk from Many Glacier Hotel). A rainbow or cutthroat trout's first strike is a thrill no youngster ever forgets. And you don't need a license.
2. **Beautiful new swimming pool**, adjoining Glacier Park Lodge, is large and L-shaped—features clean, sky-blue heated water. Spacious sun deck.
3. **Going-to-the-Sun Road**, a 50-mile engineering masterpiece, crosses the Continental Divide—gives motor coach passengers commanding views of Glacier's most breathtaking mountain scenery.

4. **Horseback party**, back from a pack trip, prepares to leave saddle guides and complete the sightseeing via launch cruise across Lake Josephine.
5. **Leisure on the links**. Stroke 'em down watered fairways to tailored grass greens on sporty 9-hole golf course near Glacier Park Lodge. (Also play 18-hole course near Prince of Wales Hotel in Canada's Waterton Lakes Park.)
6. **Perfect end** to a fun-filled Glacier Park day... a twilight songfest at Swiftcurrent Lake. Campfire's warmth is welcome after sunset.



GREAT PLACES TO STAY!



7. **Prince of Wales Hotel** in Canada's adjoining Waterton Lakes National Park abounds with rustic Old-World charm in its picturesque, lakeshore setting.
8. **Many Glacier Hotel** is in the heart of Park's majestic beauty. Swiftcurrent Lake (background) is just one of dozens within easy hiking or horseback distance from this gracious hotel. A stone's throw away: Swiftcurrent Motel, with adjacent gift shop, restaurant.
9. **Hearty appetites are welcome** in Glacier hotel dining rooms. The cuisine, served by cheerful

- gaily-costumed waitresses, is famous for both its variety and excellence.
10. **Glacier Park Lodge** at East entrance is largest of four great American Plan hotels in Glacier-Waterton Lakes Parks. Nearby fun: heated swimming pool, 9-hole golf course, riding.
11. **Lake McDonald Hotel**, stands in a "storybook" setting amidst giant cedar trees, overlooking Glacier Park's largest lake. A first stop for West entrance visitors, this hotel is noted for its quiet charm and restful lodging.

GREAT WAYS TO VISIT GLACIER

Choose from these special "package-price" vacations and tours (see map):

TEN-DAY VACATION includes luxurious lodging, meals for 3 days at Glacier Park Lodge; 2 days at Prince of Wales Hotel on Canada's Waterton Lakes; 3 days at Many Glacier Hotel; and 2 days at Lake McDonald Hotel. All-expense price also includes launch cruises on Two Medicine, Waterton, Swiftcurrent and Josephine Lakes and open-top motor coach trips. Among scenic attractions: Trick Falls, St. Mary Lake, Going-to-the-Sun Road, Logan Pass, hundreds of towering mountains. Start from East Glacier Park entrance or from Park's western entrance at Belton, Montana.

FIVE-DAY VACATION includes lodging, meals for 2 days at Glacier Park Lodge; 2 days at Many Glacier Hotel; 1 day at Prince of Wales Hotel. Also included in all-expense price: launch cruises on Two Medicine, Swiftcurrent and Josephine Lakes, lunch at Lake McDonald Hotel, motor coach trips to all points on ten-day vacation.

THREE-DAY TOUR offers choice of first day at Glacier Park Lodge, with a cruise on Two Medicine Lake—or overnight stop amidst scenic splendor at Lake McDonald Hotel; 1 day at Prince of Wales Hotel, with cruise of Waterton Lake; 1 day at Many Glacier Hotel. All-expense price includes meals, lodging, launch cruises and motor coach trips (featuring 50-mile drive over spectacular Going-to-the-Sun Road). This tour also may be arranged on a through-the-park basis, entering in the U.S. and leaving in Canada, or vice-versa.

TWO-DAY TOUR includes meals, lodging with choice of first day and night at Glacier Park Lodge or Lake McDonald Hotel. Second day at Many Glacier Hotel. All-expense price also includes launch cruise on Two Medicine Lake, Going-to-the-Sun and other motor coach trips.

ONE-DAY STOPOVER includes day and night at Glacier Park Lodge with cruise of Two Medicine Lake; breakfast next morning, followed by open-top motor coach trip over Going-to-the-Sun Road to Lake McDonald Hotel for lunch. (Or enjoy same pleasures in reverse order, starting from Park's western entrance at Belton.)

HELPFUL HINTS FOR GLACIER GUESTS

Clothing. Dress simply, informally. Sportswear acceptable for all occasions. Light clothing for sunny days and indoors; warm jackets, sweaters or top coats for mountain breezes, cool nights. On trails—afoot or horseback—a wool shirt, slacks or levis, sturdy comfortable shoes. Also a brimmed cap and sunglasses.

Mail and telegrams. For guests at Glacier Park Lodge or Many Glacier Hotel, address care of hotel or Glacier Park Company, East Glacier Park, Montana. Lake McDonald Hotel: care of hotel, Lake McDonald P.O., Montana. Prince of Wales Hotel: care of hotel, Waterton Lakes National Park, Alberta, Canada. All four hotels offer long distance telephone service at regular rates.

Hotel services. Valet, laundry service at all hotels. Beauty parlor at Glacier Park Lodge; barber shop with beauty services at Many Glacier. Physician, trained nurses, or both, and medical supplies at all hotels. Gift shops at all hotels offer sundries, curios, clothing. Cocktail lounges at Glacier Park Lodge, Lake McDonald, Many Glacier and Prince of Wales Hotels. (Many Glacier also operates a state liquor store.)

Guided trips. Fishing, camping, horseback trips with guides may be arranged at each hotel. Trail hikes conducted by National Park ranger-naturalists at Many Glacier. Box lunches for all outings available at hotels.

Photo supplies. Sold at all hotels, so bring your camera. Field glasses also add to the sightseeing enjoyment.

Religious services. Protestant and Catholic services at Glacier Park hotels each Sunday. Prince of Wales Hotel guests may attend services in nearby Waterton Village. Inquire at hotel desks for exact times, locations.

Rental equipment. Available for riding, hiking, fishing, golf. No fishing license required within Glacier Park boundaries.