



● EXCELLENT MEALS are a Great Northern tradition. Wide selection and prices to fit every budget.

● BUFFET in the club-observation-lounge is well-stocked with your favorite beverages.

A wide selection of sleeping car accommodations to fit every travel budget is available on the Oriental Limited. Standard Pullman sections, double bedrooms for two and ensuite for four persons, compartments and drawing rooms.

For less than the cost of Standard Pullman accommodations and slightly more than the cost for coach travel, passengers on the Oriental Limited may enjoy full sleeping car service in tourist sleeping cars, upper and lower berths, with all essential comforts provided.

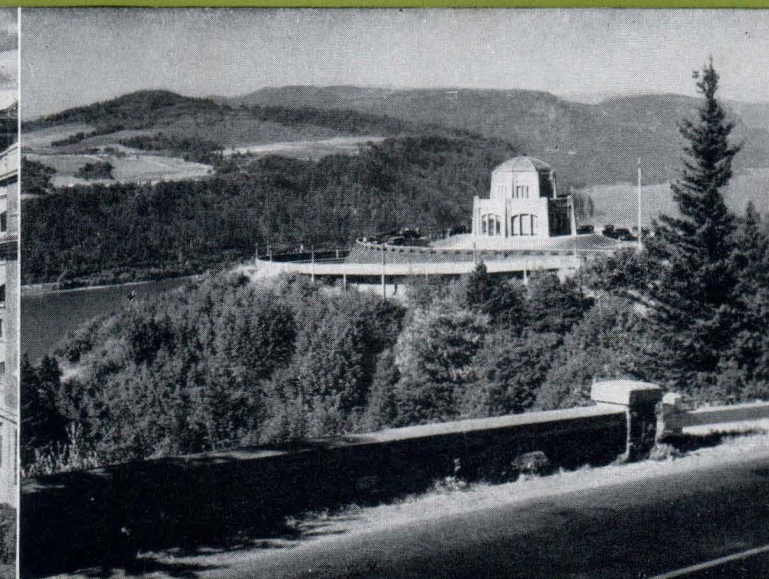
Great Northern dining car meals are famous for variety and excellence of foods—and in the delightful atmosphere of the club-observation-lounge car there is every facility for leisure-time comfort.

For the lowest rate of rail fare, there are deluxe coaches, with complete toilet facilities and dressing rooms. The deep cushioned adjustable reclining seats are comfortable for day and night travel.

● COACHES have deep-cushioned individual seats with adjustable reclining backs providing restful comfort day and night.



● SPOKANE—Impressive Civic Center. Capital of the Inland Empire and eastern gateway to Grand Coulee Dam.



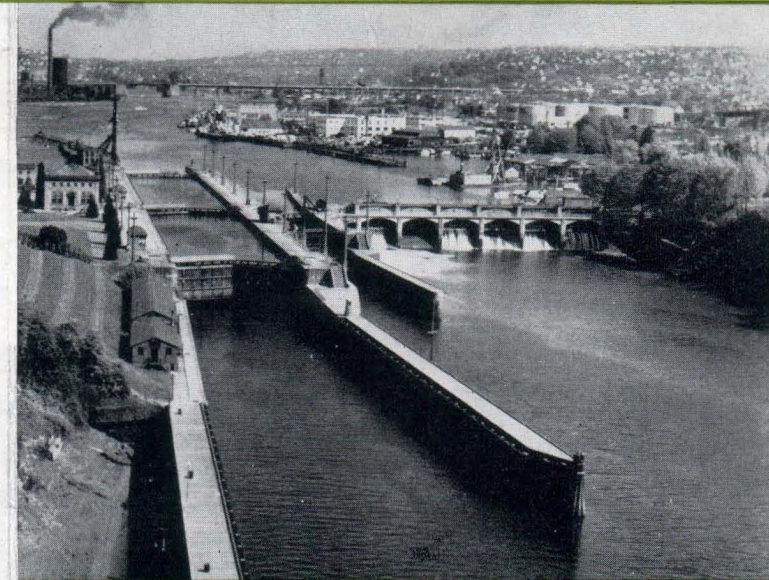
● PORTLAND—The City of Roses, affords scenic views like this along the mighty Columbia River.

The Oriental Limited

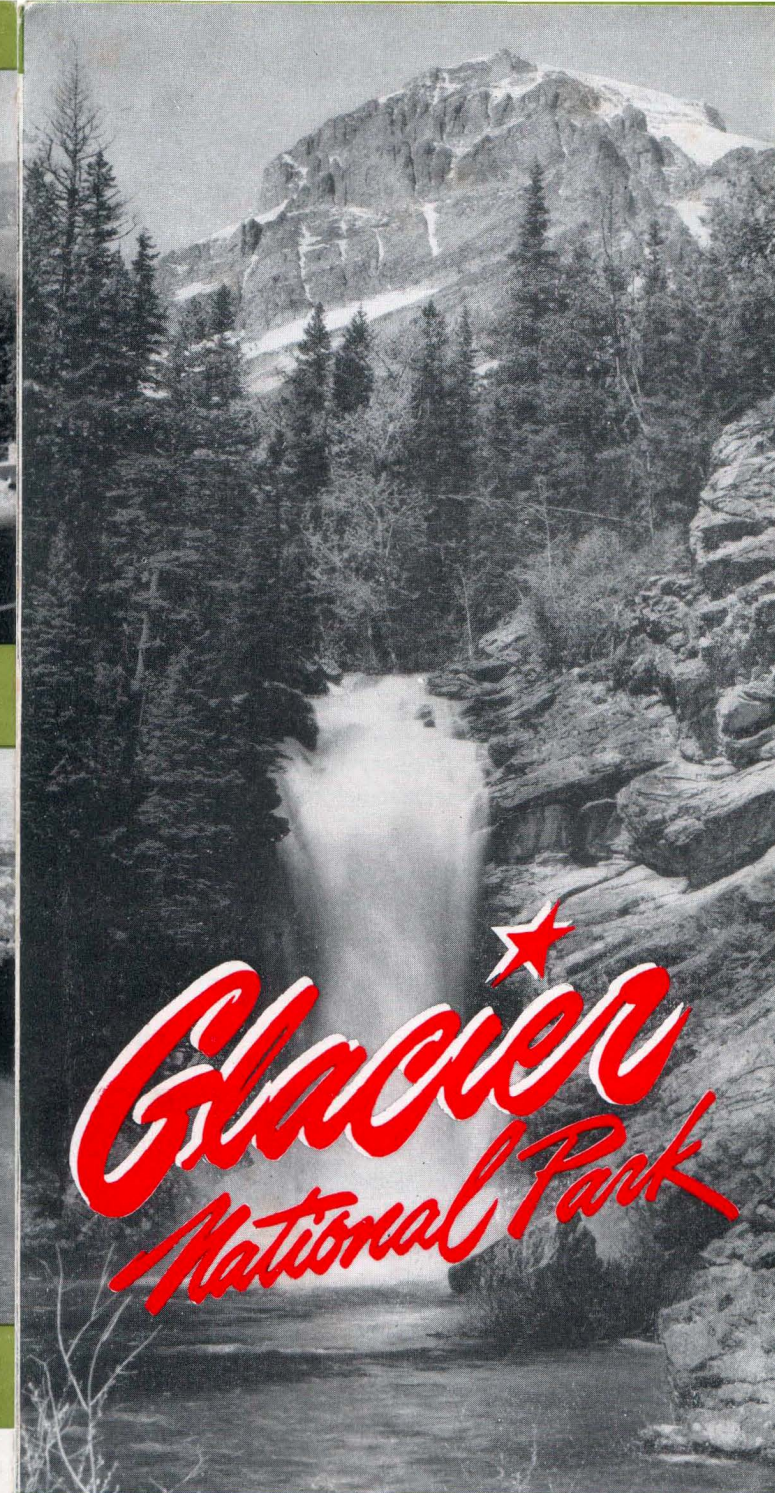
Completely Air-Conditioned — No Extra Fare

- Economical Travel
- Comfort and Convenience
- Excellent Meals
- Spectacular Scenery
- Safe Smooth Riding
- Lowest Rail Crossing of the Rockies

Between Chicago, St. Paul, Minneapolis, Fargo, Grand Forks, Minot, Great Falls, Spokane, Portland, Wenatchee, Seattle, Tacoma, Everett and Pasco, via Glacier National Park in Montana, with convenient train connections to British Columbia and California.

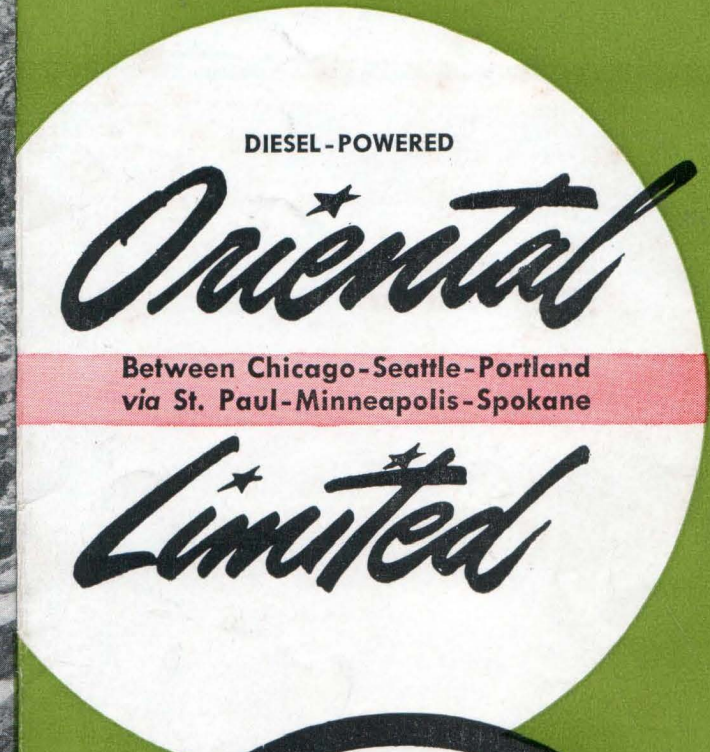


● SEATTLE—The second largest locks in the Americas, connecting Puget Sound with Lakes Union and Washington.



Glacier National Park

America's Greatest Mountain Vacationland



A Great Way To Travel

Glacier National Park

*Reached by the
Oriental Limited*

In the Montana Rockies



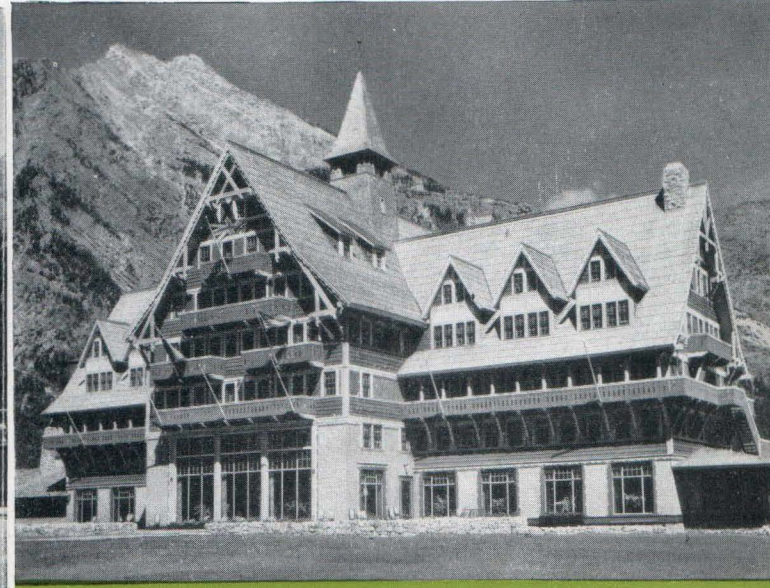
● **GLACIER PARK HOTEL**, within a few hundred yards of Great Northern's eastern rail entrance to the Park, provides all the essential comforts of a modern hostelry.

Magnificent hotels provide superb service—and the Park can be seen from open-top sightseeing busses operated by skilled drivers who know this vacation paradise like a book. Following stop-over tours, passengers entrain once more and continue the scenic trip on the Oriental Limited.

● **PRINCE OF WALES HOTEL**, in Waterton Lakes National Park, just across the border in Canada. A charming Swiss chalet-type hotel providing wonderful meals and comfortable rooms.

America's most breath-taking National Park is reached by Great Northern's Oriental Limited. Stops are made daily June 15 through September 15, both at the eastern and western rail entrances to the Park. From either Glacier Park Station or Belton, passengers may stop-over for one, two, three or many-day all-expense motor coach tours.

● **LAKE McDONALD HOTEL**, near Belton, is situated on the shore of Glacier Park's largest lake, and commands an excellent view of rugged mountain peaks.



● **THE LOUNGE-OBSERVATION CAR** on the Oriental Limited is a traveling living-room. For reading, relaxing and leisure-time comfort.

EVERY DAY EACH WAY

For Complete Travel Information

Write to, telephone or call in person on the nearest Great Northern Railway passenger representative, tour bureau or travel agent.
V. J. KENNY, PASSENGER TRAFFIC MANAGER,
Saint Paul 1, Minnesota

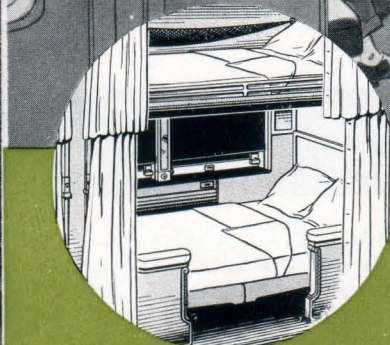
E. H. MOOT, GENERAL PASSENGER AGENT,
142 South Clark Street,
Chicago 3, Illinois

N. D. KELLER, GENERAL PASSENGER AGENT,
Fourth Avenue at Union Street,
Seattle 1, Washington

A SELECTION OF SLEEPING CAR ACCOMMODATIONS

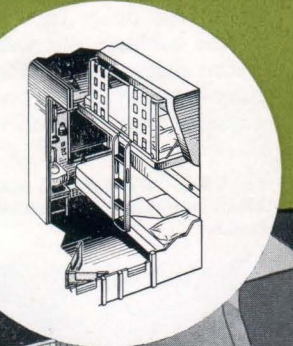
● **THE SECTION**—A combination of an upper and lower berth for night-time travel; a reserved lounge seat by day. Each berth has its own light and heat controls. Dressing rooms offer plenty of space for personal needs.

● **THE COMPARTMENT**—An attractive, spacious private room that will accommodate two to four persons, family style. For daytime travel it provides two large sofa-type lounge seats. At night, a bed below with berth above. Complete toilet, lavatory and wardrobe facilities, with individual heat, light and ventilation control.

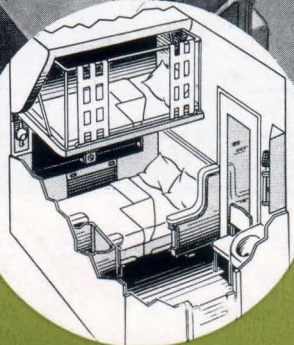


Double Bedroom by Night →
Bedroom Ensuite by Day ↓

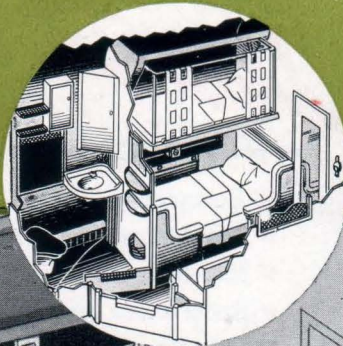
The Section by Day ↑
and
← Night



Compartment by Day ↑
and
← Night



Drawing Room by Day and Night ↓



For Comfort
Oriental Limited
..... Convenience

● **THE DOUBLE BEDROOM**—Smartly designed and beautifully furnished, providing private-room accommodations. A cozy sitting room by day with sleeping accommodations for two. Double bedrooms can be arranged **ENSUITE** to accommodate four adults. Complete toilet, lavatory and wardrobe facilities in each room, with individual control of heat, light and ventilation.

● **THE DRAWING ROOM**—The last word in travel luxury, providing complete privacy. A spacious living-room with double lounge and sofa. A separate adjoining room contains toilet and lavatory. For day-time travel there is ample room to seat four or more passengers comfortably. At night the commodious upper and lower berths accommodate two or three adults and the sofa one adult, or three adults and two children. Individual heat, light and ventilation control.

