

and dinner in the charming dining room.
largest lake. Room assigned for the day and overnight. Lunch
quiet charm, nestles under giant cedars on the shore of Glacier's
mile drive to LAKE McDONALD LODGE, which is noted for 12-
gateway to the Park, 8:45 A.M. Transfer to motor coach for 12-
the Continental Divide to arrive Belton, Montana, western
GLACIER NATIONAL PARK for sixty scenic miles and crosses
MONDAY — The streamliner skirts the southern boundary of
Valley, and through the vast rolling grain fields of North Dakota.
Minnesota, the land of ten thousand lakes, the rich Red River
Minneapolis, 10:05 A.M. in a northwesterly direction through
Continue aboard the WESTERN STAR from St. Paul 8:30 A.M.
SUNDAY — Arrive St. Paul 6:25 A.M. for two-hour stopover.

ton Route to St. Paul-Minneapolis.
SATURDAY — Leave Chicago Union Station 9:30 P.M. aboard
Great Northern's streamlined WESTERN STAR via the Burlington

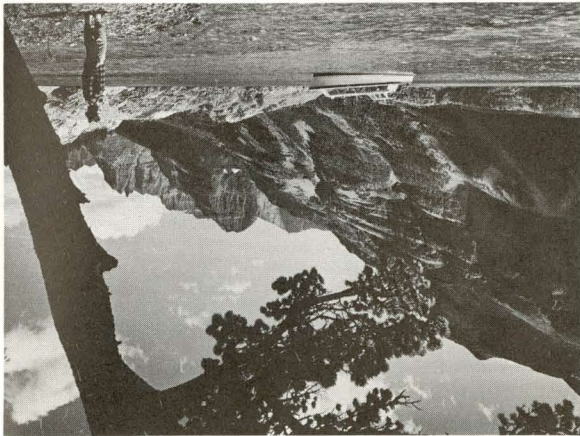
Leave any day during the season—EXAMPLE:

Itinerary No. 4

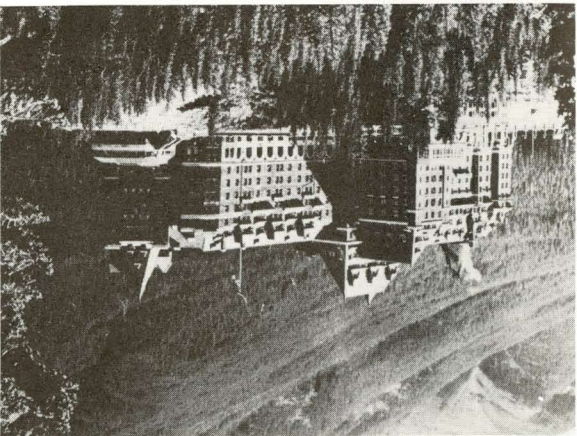
Suggested Itinerary for Independent Travel to be reserved and pre-arranged on dates selected by the traveler.

GLACIER NATIONAL PARK BANFF-LAKE LOUISE

In all the Rocky Mountain region there is
no more beautiful lake than St. Mary.



Famed Banff Springs Hotel, Banff National
Park, Alberta, Canada.



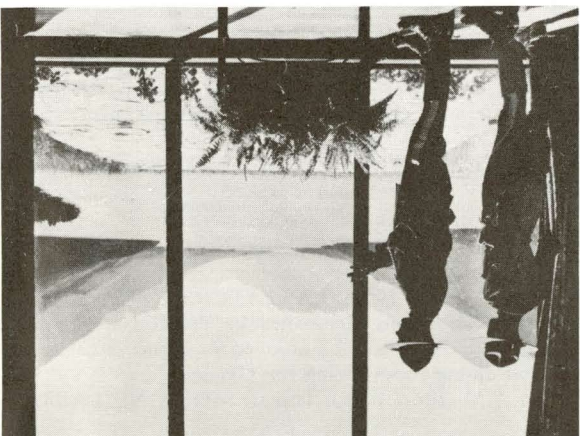
the lake, Victoria Glacier on Temple Mountain. All meals will
LOUISE, set in a ring of snow-crested peaks and, facing across
MONDAY — TUESDAY — WEDNESDAY — At CHATEAU LAKE
3:30 P.M., where room is assigned for three-day stay. Dinner.
Canyon for walk to the falls. Arrive CHATEAU LAKE LOUISE
SUNDAY — Depart 1:30 P.M. by motor coach for 40-mile drive
via the Bow Valley to LAKE LOUISE. Stop is made at Johnson
Canyon for walk to the falls. Arrive CHATEAU LAKE LOUISE
3:30 P.M., where room is assigned for three-day stay. Dinner.

sportswear.
for special merchandise such as imported china, linens, woollens,
Plenty of time for golf, the pool, hiking, or shopping in town.
to the top of Mt. Norquay for the magnificent panoramic view.
lowed for those wishing to take the Chairlift trip (\$1.50 charge)
for DELUXE General Drive of Banff and environs. Time is al-
Hotel. On either day at 8:45 A.M. or 1:15 P.M., leave from the hotel
meals impeccably served in the dining room of the Banff Springs
tifully situated in the valley of the Bow River. Superb, gourmet
SATURDAY-SUNDAY — Two wonderful days in BANFF, so beau-

two-night stay.
9:45 P.M. at BANFF SPRINGS HOTEL. Room assignment for
PARK, situated in the heart of the Canadian Rockies, arriving
(evening meal not included). Then on to BANFF NATIONAL
entourte to Calgary, Alberta, where snack-time stop is made
Depart by Western Canadian Greyhound bus at 3:00 P.M.
the municipal pool, or a stroll and shopping in Waterton town.
where the morning is at leisure with time for golf, a swim in
FRIDAY — Breakfast and lunch at PRINCE OF WALES HOTEL,
in the Royal Scarlet dining room.

ton Lake. Lunch in the dining room, then motor transfer to the
dock in Waterton Village for two-hour scenic launch trip on
Waterton Lake to Goathead and return. Delicious dinner served
in the Royal Scarlet dining room.

Picture window at Prince of Wales Hotel
frames Waterton Lake and surrounding
mountains.

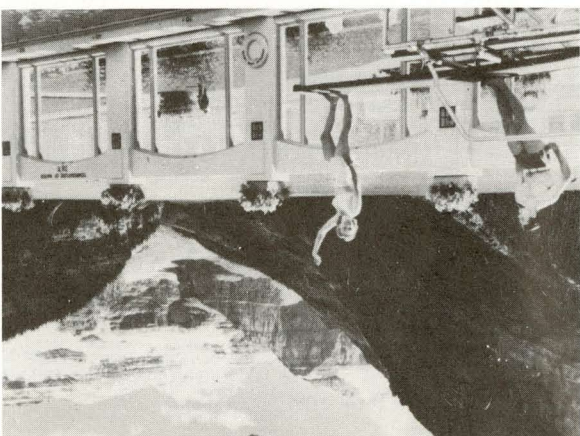


SATURDAY — Arrive Minneapolis 7:00 A.M., St. Paul 7:30 A.M.
Passengers enroute to Chicago may leave St. Paul at 8:25 A.M.
via the Burlington's MORNING ZEPHYR arriving CHICAGO
(Union Station) 2:45 P.M.
PEG LIMITED at 7:15 P.M.
woolens. Leave WINNIPEG (Great Northern Station) WINNI-
offering an abundance of fine imports—glass, china, silver, leather,
cellent dining and public rooms. There are several fine stores
check your baggage. Nearby is the Fort Garry Hotel with ex-
cial centre of Manitoba Province. Transfer across town by taxi
A.M. and detrain for a free day in WINNIPEG, bustling commer-
FRIDAY — Arrive WINNIPEG (Canadian Pacific Depot) 10:45

spiral tunnels of the Canadian Rockies.
ADIAN, departing 1:18 P.M. eastward through the world-famed
hues of its waters. Motor to Field in time to board THE CAN-
Leisure time at EMERALD LAKE, so named for the emerald,
and Kicking Horse Pass, with its many spectacular waterfalls,
motor coach proceeding through densely wooded YOHO VALLEY
THURSDAY — Leave CHATEAU LAKE LOUISE 8:30 A.M. by

over the Icefield. Return about 6:00 P.M.
Chalet and time is allowed for Snowmobile trip (nominal charge)
largest body of ice south of the arctic. Lunch included at the
magnificence of the Canadian Rockies to COLUMBIA ICEFIELD,
ing 9:30 A.M. over the Columbian Highway, through the thrilling
On any day of the stay, you will enjoy a full day trip, depart-
the glacier.
be enjoyed in grand style in the imposing dining room facing

Heated swimming pool at Chateau Lake
Louise in the Canadian Rockies.



RESERVATION INFORMATION

Great Northern Railway's Independent Summer Vacation arrangements permit the western vacationer to travel carefree yet "on his own." The itinerary and dates of travel as well as the type and extent of the services are tailor-made to individual specifications. Train and hotel reservations are made and confirmed prior to departure. In this folder are detailed four of the most popular and rewarding two-week vacation itineraries into Great Northern Railway territory.

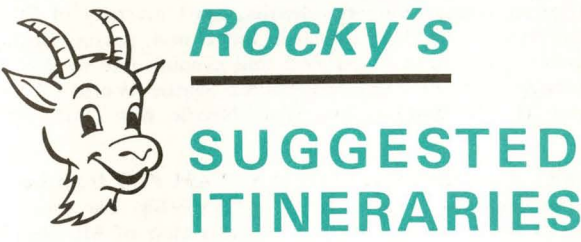
The cost of these various programs, detailed on the insert sheet, is governed by the class of railway travel selected (Coach or Pullman) and the type of hotel and room chosen.

To arrange for one of these "independent" vacations, call in person, telephone, or write to the representative shown in the box below. He will want to have the following information:

1. Full names of the persons traveling, relationship if pertinent to Family Plan railway fares, ages of children (if any).
2. Date trip is to start, together with any adjustments in the itinerary which personal inclinations might require. For mid-summer travel it might be well to suggest alternate starting dates, if possible.
3. Class of railway travel desired. If Pullman indicate type of room preferred. Most summer trains carry a choice of roomette (small room for one), double bedroom, double compartment, bedroom suites for 2, 3 or 4.
4. Indicate preference in hotels—superior, medium, economy; as well as type of room—single, twin-bedded, double bed.

When all is complete and final cost established, confirmation and final itinerary will be sent to you along with procedure for finalizing arrangements. Plan and act now for a memorable worry-free vacation in the glorious American and Canadian west.

GREAT NORTHERN RAILWAY



for Pre-arranged and Reserved INDEPENDENT TRAVEL SUMMER VACATIONS

- **Glacier-Banff-Lake Louise**
- **Glacier-Banff-Lake Louise-Jasper**
- **Pacific Northwest-Banff-Lake Louise**
- **Pacific Northwest-California-Las Vegas**



Mount Rainier—mighty monarch of the Cascades.

Go Great . . . on Great Northern's
GREAT TRAINS

**Incomparable EMPIRE BUILDER
and WESTERN STAR**

Great Northern Railway's Itinerary Suggestion for...

CALIFORNIA

GO VIA PACIFIC NORTHWEST—RETURN WITH STOPOVER IN LAS VEGAS

Itinerary No. 5

Many wonderful itineraries can be built from the numerous and varied features available over the "Grand Circle Route" to California. Here is a sample program which many travelers will enjoy.

FRIDAY — Leave CHICAGO Great Northern Railway's Great Dome EMPIRE BUILDER, 2:30 PM CST. Afternoon along scenic, historic Mississippi River. Twin Cities, evening.

SATURDAY — En route across Montana and circle of glorious Glacier National Park.

SUNDAY-MONDAY — SEATTLE, Wash., in the evergreen PACIFIC NORTHWEST. 4-hour "Land and Water" tour of highlights by motor and steamer. Full day Cruise on Puget Sound to old-English VICTORIA, Canada with guided tour of Butchart's famous gardens.

TUESDAY-WEDNESDAY — Morning train to PORTLAND, Oregon. Overnight. 5-hour drive along expansive Columbia River, visiting Shrine, Multnomah Falls, Bonneville Dam. Full day scenic trip on SHASTA DAYLIGHT through high timber, around Mt. Shasta to Oakland. Motor across Oakland Bay Bridge to SAN FRANCISCO.

THURSDAY-FRIDAY — SAN FRANCISCO — everyone's favorite city! 3-hour deluxe tour of city—Golden Gate, Cliff House, Twin Peaks. Evening tour to Chinatown, Fisherman's Wharf, Telegraph Hill. Free time for "Top O' the Mark" and shopping.

SATURDAY-SUNDAY-MONDAY — The real glory and beauty of California in a three-day, 537 mile, motor coach tour along the Pacific Ocean. Stanford, giant Redwoods of Santa Cruz, Cypress Point, Carmel-by-the-Sea, Point

Sur, Santa Barbara Mission, Malibu Shore, Santa Monica. Overnight CASA MUNRAS in Monterey and MIRAMAR in Santa Barbara. Meals at delightful restaurants. Frequent picture stops.

TUESDAY-WEDNESDAY — LOS ANGELES and Southern California. Trip to DISNEYLAND on a half-day. Free railway side trip to SAN DIEGO is available. Time to explore Hollywood, Restaurant Row, visit friends.

THURSDAY — Leave 8:00 AM Las Vegas Holiday Special with Buffet breakfast and lunch arriving LAS VEGAS 2:45 PM. Overnight reservation your choice of famous "strip" hotels.

FRIDAY — All day at leisure in LAS VEGAS! Sun, swimming pool, downtown, time for "dinner show." Depart CITY OF LOS ANGELES 10:50 PM.

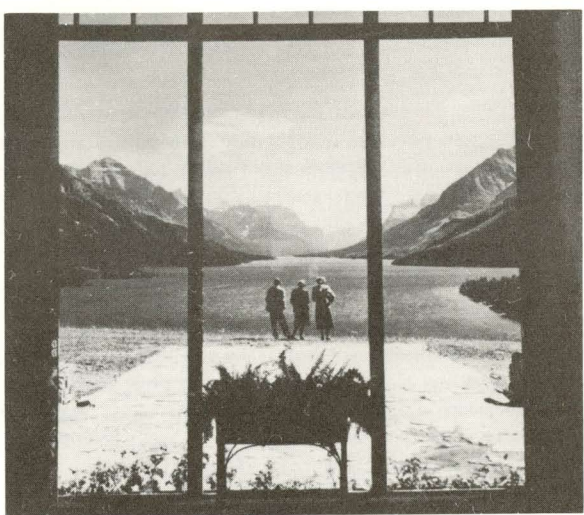
SATURDAY-SUNDAY — En route through Salt Lake City and western ranch country of Wyoming. Arrive CHICAGO (Union Station)—home again after a grand vacation... 11:59 AM CST.

EXAMPLE OF COST WHICH DEPENDS ON SERVICES SELECTED

(Basis: Coach on trains, moderately-priced hotels)

Coach individual round-trip railway ticket*	\$126.70
Steamer side trip to Victoria	7.00
Reserved seats on certain streamliners	5.50
Sightseeing tours, as shown above	24.95
California Motor Tour including 2 nights, 7 meals	82.00
Moderate hotels (10 nights), basis twin beds, bath	75.00
TOTAL, each of two persons sharing hotel room	\$321.15

*Note: If man and wife start trip on Monday through Thursday, Family Plan Savings on wife's ticket is \$51.30.



Picture window at Prince of Wales Hotel frames Waterton Lake and surrounding mountains.



Many Glacier Hotel in the heart of Glacier National Park in the Montana Rockies.



Victoria Glacier on Temple Mountain from Chateau Lake Louise.

GLACIER NATIONAL PARK BANFF-LAKE LOUISE COLUMBIA ICEFIELDS HIGHWAY JASPER PARK

Suggested Itinerary for Independent Travel to be reserved and pre-arranged on dates selected by the traveler.

Itinerary No. 2

Leave any day during the season—EXAMPLE:

SATURDAY—Leave Chicago Union Station 9:30 P.M. aboard Great Northern's streamlined WESTERN STAR via the Burlington Route to Saint Paul-Minneapolis.

SUNDAY—Arrive St. Paul, capital of Minnesota, 6:25 A.M. for a two-hour stopover. The WESTERN STAR continues westward from St. Paul 8:30 A.M., Minneapolis 10:05 A.M., across Minnesota, land of ten thousand lakes the rich Red River Valley, and the vast rolling grain fields of North Dakota.

MONDAY—The streamliner pauses briefly in the early morning at the eastern entrance to GLACIER NATIONAL PARK, then skirts the southern boundary of the park for sixty scenic miles to arrive Belton, Montana, western gateway, at 8:45 A.M. Transfer to motor coach for a 20-minute drive to LAKE McDONALD HOTEL, which nestles under giant cedars on the shore of Glacier's largest lake and is noted for its quiet charm. Room assigned for overnight stay. Lunch and dinner in the charming dining room facing the lake.

TUESDAY—After breakfast continue at 9:40 A.M. by motor coach for one of America's most spectacular mountain drives on GOING-TO-THE-SUN HIGHWAY over Logan Pass. A stop is made atop Logan Pass for the grand panoramic view. Descend the eastern slope through snowcapped peaks, along reflective upper St. Mary's Lake, and through deep green valleys to MANY GLACIER HOTEL, largest of the Park's fine hotels. Following arrival, 12:30 P.M., enjoy lunch in the high-windowed dining room facing Swiftcurrent Lake. At 2 P.M. leave for a launch trip on Swiftcurrent and Josephine Lakes, with optional hike with Ranger to Grinnell Lake and Glacier. Dinner in the dining room followed by evening program of musical entertainment.

WEDNESDAY—After breakfast continue motor coach trip northward at 9:40 A.M. to Canada's Waterton Lakes National Park

where you arrive at the PRINCE OF WALES HOTEL, perched spectacularly on a bluff overlooking seven-mile Waterton Lake, at 11:55 A.M. Lunch in the dining room, then motor transfer to the dock in Waterton Village for two-hour scenic launch trip on Waterton Lake to Goathaunt and return. Delicious dinner served in the quaint dining room. Lodging at PRINCE OF WALES HOTEL.

THURSDAY—Breakfast and lunch PRINCE OF WALES HOTEL with time for golf, a swim in the municipal pool, stroll and shopping in Waterton town. Depart by Western Canadian Greyhound bus at 3:00 P.M. enroute to Calgary, Alberta where snack stop is made (dinner not included). Then on to BANFF NATIONAL PARK in the heart of the Canadian Rockies, arriving 9:45 P.M., BANFF SPRINGS HOTEL. Room assignment for two-night stay.

FRIDAY-SATURDAY—Two wonderful days in BANFF, so beautifully situated in the valley of the Bow River. Superb, gourmet meals impeccably served in the dining rooms of the Banff Springs Hotel. On either day at 8:45 A.M. or 1:15 P.M. leave from the hotel for DELUXE General Drive of Banff and environs. Time is allowed for those wishing to take the Chairlift trip (\$1.50 charge) to the top of Mt. Norquay for the magnificent panoramic view. Plenty of time for golf, the pool, hiking, or shopping in town for specialized merchandise such as imported china, linens, woolens, sportswear.

SATURDAY—Depart 1:30 P.M. by motor coach for 40-mile drive via the Bow Valley to LAKE LOUISE. Stop is made at Johnson Canyon for walk to the Falls. Arrive CHATEAU LAKE LOUISE 3:30 P.M., where room is assigned. Dinner.

SUNDAY—At CHATEAU LAKE LOUISE, set in a ring of snow-capped peaks and facing across the lake, Victoria Glacier on Temple Mountain. All meals will be enjoyed in grand style in the high-windowed dining room facing the Glacier. At 10:00 A.M. short motor trip to MORaine LAKE and the

SATURDAY—IN SEATTLE—"Queen City of the Northwest." At time of choice (four departures daily) a four-hour LAND AND WATER TOUR of Seattle is included—this is one of the most enjoyable sight-seeing trips in the west and includes motor coach tour of business and residential district, the University of Washington, a cruise of Lakes Washington and Union, passing through the Government Locks. Afternoon and evening free to visit the stellar holdover attractions of the 1962 Seattle World's Fair—Monorail, U.S. Science Pavilion, Space Needle, new "Fun Area."

SUNDAY—Early departure today at 8:30 AM PDT from Lenora Street Dock aboard ocean-going PRINCESS ship. The four-hour crossing of Puget Sound affords wonderful view of Mt. Rainier, the Olympic Range, and Mt. Baker. Arrive VICTORIA, B. C. 12:20 PM PDT and disembark. Representative of the Gray Line will receive and check your baggage through to Vancouver leaving you free for the day. Depart from the pier by Gray Line for drive through the Saanich Peninsula and an hour's guided walk through BUTCHART'S GARDENS, rated among the finest in the world. Return to the center of old-English VICTORIA about 2:15 with time to see the Empress Hotel and Parliament Buildings. Depart 4:10 PM PDT on "ROYAL VICTORIAN" motor coach service along picturesque coast to Swartz Bay where coach boards ferry for 1-1/2 hour sail through island dotted strait to mainland. Restaurant, Coffee Shop, Snack bar available on ferry. The drive continues from Tsawwassen to downtown VANCOUVER. Transfer to HOTEL VANCOUVER where room reserved for overnight, arriving 7:35 PM PDT.

MONDAY—IN VANCOUVER. Morning is free for shopping. At 12:30 PM PDT leave hotel for a three-hour GRAND CITY TOUR which will include Stanley Park; Lions Gate Suspension Bridge; the exclusive residential section known as Shaughnessy Heights, with lovely homes and quaint English gardens; and the beautiful Queen Elizabeth Arboretum. Leave VANCOUVER (Canadian Pacific Station) on famed streamliner CANADIAN at 7:40 PM PST.

TUESDAY—Thrilling mountain scenery during the morning as the CANADIAN approaches the CANADIAN ROCKIES. Detrain at Field, B.C., 1:10 PM MST for four-day tour Brewster-Rocky Mountain-Gray Line. Drive to Emerald Lake, Yoho Valley, Takakkaw Falls and to CHATEAU LAKE LOUISE, arriving in time for dinner. Lodging for two nights.

WEDNESDAY—CHATEAU LAKE LOUISE. After Breakfast depart 9:30 AM MST by motor coach for an all-day tour of magnificent mountain scenery along the COLUMBIA ICEFIELD HIGHWAY to the COLUMBIA ICE FIELDS. Stop of about two hours is made for lunch and, if desired, snow-mobile trip on the Athabaska Glacier. Return to Lake Louise about 6:00 PM MST. Dinner in the splendid dining room.

THURSDAY—Morning at LAKE LOUISE with tour, 10:00 AM MST to Moraine Lake and Valley of Ten Peaks. Return for lunch. Depart at 1:30 PM MST for drive via Bow Valley with stop at Johnson's Canyon to arrive BANFF SPRINGS HOTEL 3:30 PM MST for dinner and overnight.



Spectacular Going-to-the-Sun Road atop the Rocky Mountains in Glacier National Park in Montana.

VALLEY OF TEN PEAKS, returning for lunch. Leave 1:30 P.M. for beautiful drive through densely wooded YOHO VALLEY and KICKING HORSE PASS, with its many spectacular waterfalls. Leisure time at EMERALD LAKE, so named for the emerald hue of its waters. Return to Lake Louise late afternoon.

MONDAY—Leave at 9:30 A.M. for one of the great motor tours on the North American Continent over the Columbia Highway through the heart of the Canadian Rockies to the vast 150 square mile COLUMBIA ICE FIELDS. Luncheon at Columbia Chalet. Continue at 3:00 P.M. along the spectacularly scenic highway to Jasper Lodge in JASPER NATIONAL PARK for a three-day stay. Arrive Jasper 5:45 P.M.

TUESDAY - WEDNESDAY - THURSDAY—At luxurious JASPER PARK LODGE, the world-famous summer resort, superbly situated in the beautiful Athabaska Valley of the Canadian Rockies. All meals will be enjoyed in the elegant and spacious dining room in the main lodge building. The program will include: Morning, 8:45 A.M.—an 80-mile motor trip down the valley of the Athabaska River to Punchbowl Falls and up the Fiddle River Canyon to Miette Hot Springs. Afternoon, 2:30 P.M., a trip to Mt. Edith Cavell and the Glacier of the Angel. Morning, 9:15 A.M., to Maligne Canyon and through Jasper to Pyramid Lake. Lunch at the lodge. On the last afternoon, transfer to the Jasper Station and depart on the Canadian National PANORAMA at 4:40 P.M. M.S.T.

FRIDAY—Travel across the Province of Saskatchewan and into Manitoba, arriving WINNIPEG 3:30 P.M. Change trains and depart from the same station in Great Northern Railway's WINNIPEG LIMITED 7:30 P.M.

SATURDAY—Arrive St. Paul, Minnesota, 7:30 A.M. Change trains and continue at 8:25 A.M. in the BURLINGTON ZEPHYR to arrive CHICAGO 2:45 P.M. (Union Station).

FRIDAY—BANFF SPRINGS HOTEL. Breakfast. Motor coach trip at 9:00 A.M. M.S.T. through Banff and environs; time allowed at the base of Mt. Norquay Chairlift to take the thrilling trip to the top for panoramic view of the Bow Valley (\$1.50 extra). Return to the hotel for lunch. Transfer to the Banff Station and depart on the streamliner CANADIAN, 2:57 P.M. M.S.T.

SATURDAY—The train enters the Province of Manitoba and arrives WINNIPEG (Canadian Pacific Station) 10:35 AM CST where you detrain for a day in this bustling Canadian city. Arrangements may be made to have baggage transferred to the Great Northern Station for claim on departure later this evening. There are many fine stores with good shopping opportunity for import items—glass, china, woolen, silk. Perhaps, dinner at the handsome Ft. Garry Hotel adjacent to the station. Depart 7:30 PM CST in Great Northern's sleek WINNIPEG, LTD.

SUNDAY—Arrive ST. PAUL (Union Station) 7:30 AM CST. Transfer to Burlington ZEPHYR departing 8:35 AM CST for scenic daylight ride along the Mississippi River, arriving CHICAGO (Union Station) 2:45 PM CST.



BANFF SPRINGS HOTEL in the Canadian Rockies.

PACIFIC NORTHWEST PORTLAND • MT. RAINIER • SEATTLE • VICTORIA • VANCOUVER CANADIAN ROCKIES BANFF AND LAKE LOUISE • COLUMBIA ICEFIELDS

SUGGESTED SUMMER VACATION: Pre-arranged • Independent • Unescorted

DAY-BY-DAY ITINERARY

All times indicated are Standard Time except Pacific Northwest portion from arrival Portland to departure Vancouver where all times shown are PACIFIC DAYLIGHT TIME—one hour faster than Standard Time.

Itinerary No. 3

Commence Trip Any Day During Summer Season . . .
EXAMPLE:

MONDAY—Leave CHICAGO (Union Station) 2:30 PM CST via the Burlington Route on the Streamlined EMPIRE BUILDER. From a high-riding Dome Seat enjoy the vast expanse of the scenic and historic Mississippi River. Depart from St. Paul, Minnesota, via Great Northern Railway, 9:50 PM CST; from Minneapolis, 10:20 PM CST.

TUESDAY—The EMPIRE BUILDER climbs the great backbone of the Rocky Mountain Range and crosses the ranging prairies of Montana. In the late afternoon circle glorious Glacier National Park for 60 scenic miles and cross the Continental divide at Summit, the lowest crossing north of New Mexico. Brief stop is made in Spokane, late evening.

WEDNESDAY—The streamliner travels along the north bank of the Columbia River to PORTLAND, Oregon, "City of Roses," arriving 8:00 AM PDT. Check your baggage in the Union Station for the day and leave at 9:30 AM by Gray Line for an 80-mile tour

over the COLUMBIA RIVER HIGHWAY with stops at the Shrine of our Sorrowful Mother, Vista House, Multnomah Falls, and Bonneville Dam and Salmon Hatcheries. Return to downtown Portland 2:30 PM where you will have some free time. Leave PORTLAND (Union Station) Train #407 5:15 PM PDT for short, interesting ride to TACOMA, reached 8:10 PM PDT. Dining car on train. Room will be reserved at the HOTEL WINTHROP.

THURSDAY—Time for leisurely Breakfast, then depart 9:25 AM PDT from the Winthrop Hotel by Mt. Rainier Park glass-topped motor coach for an exciting two-day adventure that will take you completely around magnificent MT. RAINIER with vast spectacular scenery and vistas of the mountain from all directions. Twenty-four wonderful hours are spent at PARADISE INN, at the 5,500 foot level, reached in time for lunch. Be sure to join the Naturalist Ranger this afternoon and in the morning for hike up the mountains, through fields of wild flowers, to vantage point of sweeping panoramic wonder. Evening illustrated lecture, employee show, dancing.

FRIDAY—Morning at PARADISE INN. Depart 3:00 PM PDT to continue the circle around Mt. Rainier past Reflection Lakes through Stevens and Box Canyons, Tipsoo Lake with a brief stop at Sunrise for view from the north side. Arrive SEATTLE, Washington about 6:30 PM. Confirmed reservation Olympic Hotel or other to be arranged.