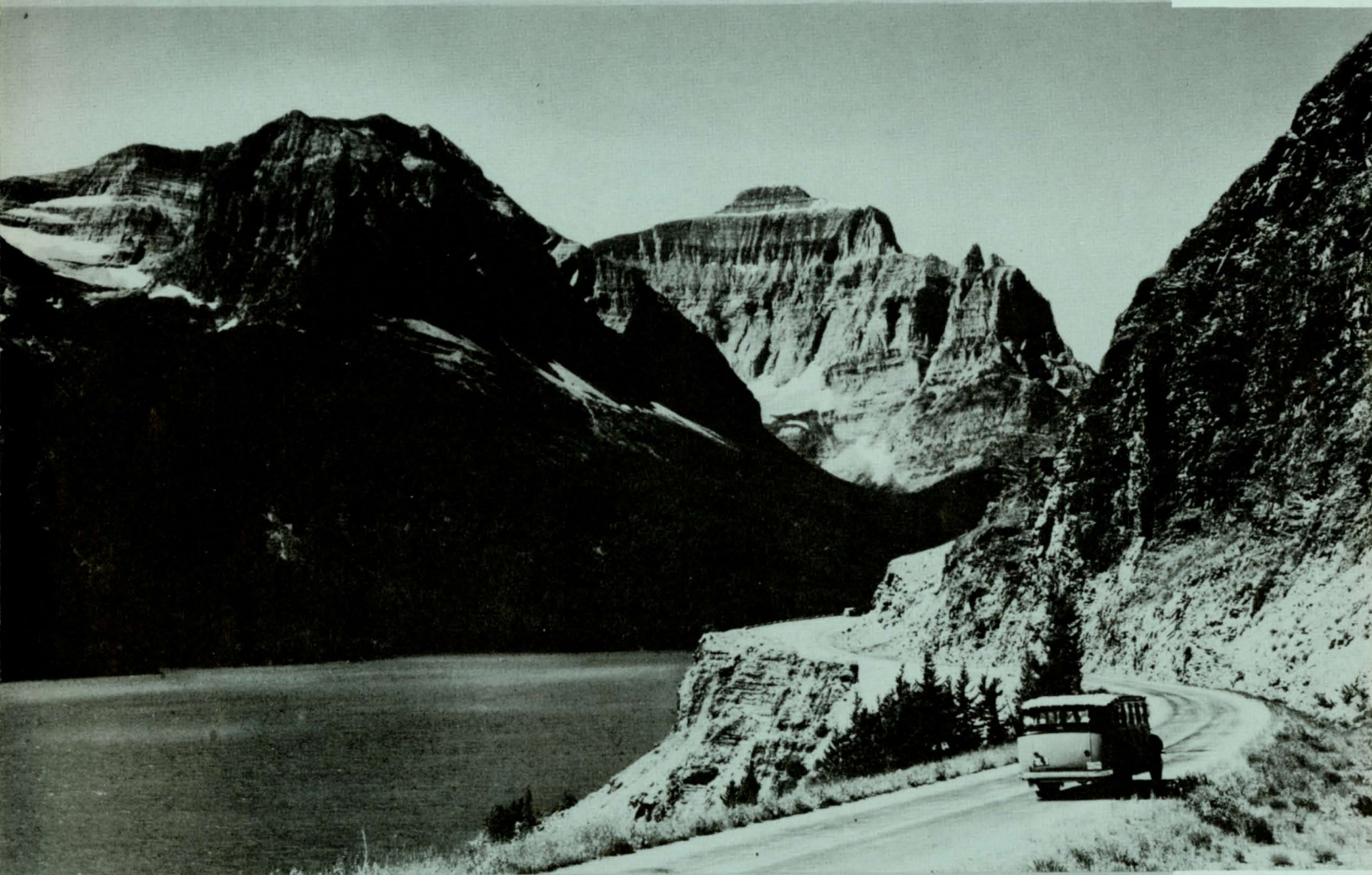


GLACIER NATIONAL PARK CANADIAN ROCKIES BANFF-LAKE LOUISE

Pre-Arranged Tour for Independent Travel



Lofty mountains seen from Going-to-the-Sun Road loom high
above upper St. Mary Lake in Glacier National Park in Montana

You go great when you go Great Northern

1958





Itinerary can be adjusted for any departure date during the summer vacation season. Length of tour or features may be added to or deleted as desired. All train schedules quoted herein are subject to change without notice. Consult your local travel agent for complete information.

ALL TIMES INDICATED ARE STANDARD TIME

Leave any day during the season—EXAMPLE:

FRIDAY — Leave Chicago Union Station 10:30 PM aboard Great Northern's streamlined **WESTERN STAR** via the Burlington Route to Saint Paul-Minneapolis.

SATURDAY — Leave Saint Paul 8:30 AM; Minneapolis 9:00 AM via Great Northern Railway. The **WESTERN STAR** speeds in a northwesterly direction through the famed Lake-Park 10,000 Lake Region of Minnesota, the rich Red River Valley, then westward through the vast rolling grain fields of North Dakota.

SUNDAY — The streamliner skirts the southern boundary of **GLACIER NATIONAL PARK** for sixty scenic miles and crosses the Continental Divide to arrive Belton, Montana, western gateway to the Park, 2:10 PM. Transfer to motor coach for 20-minute trip to **LAKE McDONALD HOTEL**, warm, hospitable lodge-type hotel overlooking deep blue Lake McDonald. Dinner and overnight.

MONDAY — Breakfast, then leave by motor coach 8:30 AM for drive over the Continental Divide via Logan Pass, on **GOING-TO-THE-SUN HIGHWAY**, one of America's most spectacular mountain roads. Short stop at Logan Pass, then down the eastern slopes through snowcapped peaks and deep green valleys to **MANY GLACIER HOTEL**, largest of the Park's fine hotels, delightfully situated in a magnificent mountain setting, arriving 11:30 AM. Luncheon, dinner, and lodging at **MANY GLACIER HOTEL**.

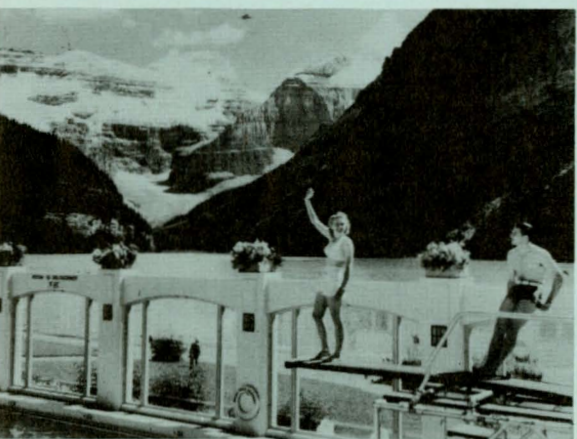
TUESDAY-WEDNESDAY — Two full days with meals and lodging at **MANY GLACIER HOTEL**. Diversions are many and varied and include strolls to nearby points of interest, longer hikes, saddle-horse trips, boating and fishing. Launch cruise on Swift-current and Josephine Lakes included in tour cost.

THURSDAY — After breakfast resume motor coach trip northward at 9:40 AM to Canada's Waterton Lakes National Park where you arrive at the **PRINCE OF WALES HOTEL**, perched spectacularly on a bluff overlooking seven-mile Waterton Lake, at 11:55 AM. Lunch in the dining room, then motor transfer to the dock in Waterton Village for two-hour scenic launch trip on Waterton Lake to Goathaunt and return. Delicious dinner served in the quaint dining room.

FRIDAY — Breakfast **PRINCE OF WALES HOTEL**. Depart 9:00 AM by Western Canadian Greyhound bus enroute to Calgary, Alberta, where lunch stop is made from 1:15 PM to 3:00 PM. (Lunch not included.) Then on to **BANFF NATIONAL PARK**

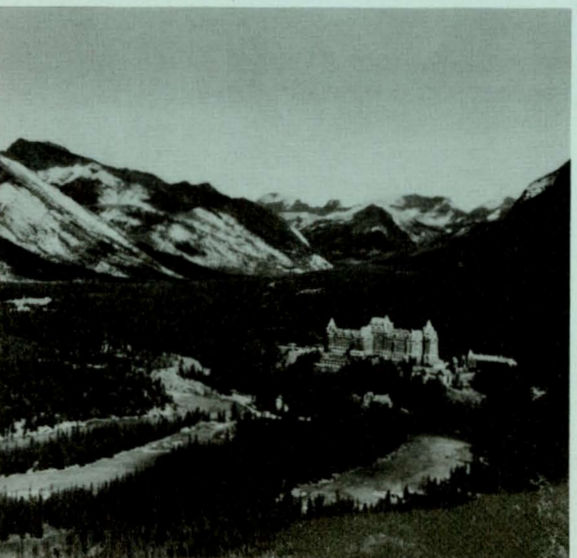


Glacier Park Lodge at the Park's Eastern rail entrance.



Heated swimming pool at Chateau Lake Louise in the Canadian Rockies.

Famed Banff Springs Hotel, Banff National Park, Alberta, Canada.



situated in the heart of the Canadian Rockies, where you arrive 5:30 PM at BANFF SPRINGS HOTEL. Room assignment for two-night stay. Dinner in your choice of two splendid dining rooms.

SATURDAY-SUNDAY — Two wonderful days in BANFF, so beautifully situated in the valley of the Bow River. Superb, gourmet meals impeccably served in the dining rooms of the Banff Springs Hotel. On either day at 9:30 AM or 1:30 PM leave from the hotel for DELUXE General Drive of Banff and environs. Time is allowed for those wishing to take the Chairlift trip (\$1.50 charge) to the top of Mt. Norway for the magnificent panoramic view. Plenty of time for golf, the pool, hiking, or shopping in town for special merchandise such as imported china, linens, woollens, sportswear.

SUNDAY — Depart 1:30 PM by motor coach for 40-mile drive via the Bow Valley to LAKE LOUISE. Stop is made at Johnson Canyon for walk to the falls. Arrive CHATEAU LAKE LOUISE 4:00 PM, where room is assigned for 3 day stay. Dinner.

MONDAY-TUESDAY-WEDNESDAY — At CHATEAU LAKE LOUISE, set in a ring of snow-crested peaks and facing across the lake, Victoria Glacier on Temple Mountain. All meals will be enjoyed in grand style in the high-windowed dining room facing the Glacier.

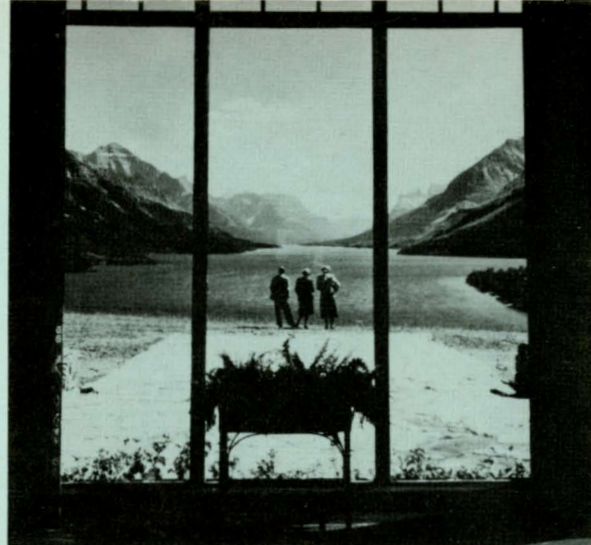
During the 3 day stay at Lake Louise two motor coach tours are scheduled: (1) Full day trip departing at 8:30 AM over the Columbian Highway through thrilling magnificence of the Canadian Rockies to the COLUMBIA ICEFIELD, largest body of ice south of the arctic. Lunch included at the Chalet and time is allowed for Snowmobile trip (nominal charge) over the Icefield. Return about 5:30 PM. (2) Shorter trip departing several times daily to MORaine LAKE and VALLEY OF TEN PEAKS.

THURSDAY — Leave CHATEAU LAKE LOUISE 8:30 AM by motor coach proceeding through densely wooded YOHO VALLEY and Kicking Horse Pass, with its many spectacular waterfalls. Leisure time at EMERALD LAKE, so named for the emerald hue of its waters. Motor to Field for connection with the MOUNTAINEER, then eastward through the world-famed spiral tunnels of the Canadian Rockies.

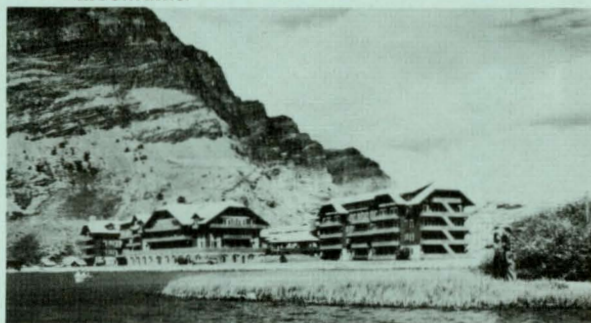
FRIDAY — Sightseeing through the car window as the train speeds across the prairies of Canada and the International Border into North Dakota.

SATURDAY — Arrive Minneapolis 6:30 AM, St. Paul 7:15 AM. Passengers enroute to Chicago may leave St. Paul at 8:25 AM via the Burlington's MORNING ZEPHYR or the Milwaukee's HIAWATHA 8:20 AM arriving CHICAGO (Union Station) 2:40 PM.

Great Northern's two great streamlined trains, the EMPIRE BUILDER and WESTERN STAR, provide twice-a-day through service each way between Chicago and Seattle-Portland via Saint Paul, Minneapolis and Spokane. Only the WESTERN STAR serves Glacier National Park in Montana, stopping at both Eastern and Western entrances during the summer vacation season—June 13 through Sept. 10.



Picture window at Prince of Wales Hotel frames Waterton Lake and surrounding mountains.



Many Glacier Hotel in the heart of Glacier National Park in the Montana Rockies.



Victoria Glacier on Temple Mountain from Chateau Lake Louise.



ESTIMATED COST OF TRIP

	From Chicago	From St. Paul
Coach-class rail travel	\$338.42	\$319.20
One person in upper berth	403.28	365.61
One person in lower berth	412.02	373.09
One person in duplex or roomette	420.88	381.45
Two persons in lower berth, each	392.22	357.62
Two persons in bedroom, each	415.77	376.15
Two persons in bedroom suite, each	445.22	400.87
Three persons in bedroom suite, each	421.84	381.29
Four persons in bedroom suite, each	410.15	371.50

PRICES SUBJECT TO CHANGE WITHOUT NOTICE.

ITEMS INCLUDED

- Special summer, coach or first class rail ticket from Chicago or Twin Cities to Belton, Montana, and from Field, British Columbia, to Twin Cities or Chicago.
- U. S. transportation tax of 10 per cent on all applicable items.
- Pullman accommodations as selected.
- Motor-coach transportation, sightseeing, and launch trips as indicated.
- Twin-bedded room with private bath at all hotels, American plan.
- All meals from dinner first day Lake McDonald Hotel through breakfast last day at Chateau Lake Louise, except lunch not included at Calgary.

ITEMS NOT INCLUDED

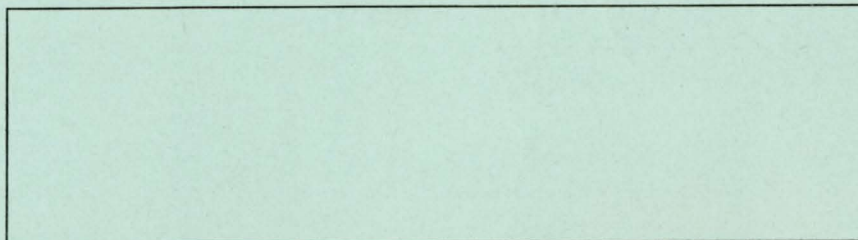
- Meals on trains and lunch at Calgary.
- Porters' fees, tips, gratuities, personal, and incidental items.

NOTE 1: Single room with bath throughout approximately \$35.25 additional.

NOTE 2: The same itinerary may be arranged providing rooms with bath at less pretentious hotels in Banff and Lake Louise. For such services deduct about \$39.00 per person from costs shown above.

- **FAMILY PLAN** Railway Fares offer a substantial saving. Consult or write your travel counselor.

**IF YOU ARE PLANNING A WESTERN VACATION WE INVITE YOUR
CONSIDERATION AND FURTHER INQUIRY.**



**OTHERWISE CONSULT YOUR LOCAL TRAVEL BUREAU, RAILWAY TICKET AGENT,
OR ANY GREAT NORTHERN RAILWAY AGENT.**

