

ENJOY A WESTERN VACATION IN...

# GLACIER NATIONAL PARK

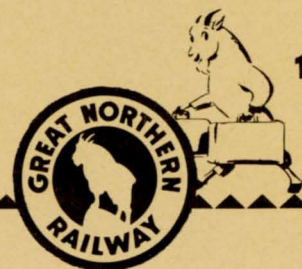
IN THE MONTANA ROCKIES



In all the Rocky Mountain region there is no more beautiful lake than St. Mary.

AS LOW AS **\$196<sup>07</sup>**  
FROM  
CHICAGO

• **\$174<sup>46</sup>**  
FROM  
ST. PAUL-MINNEAPOLIS

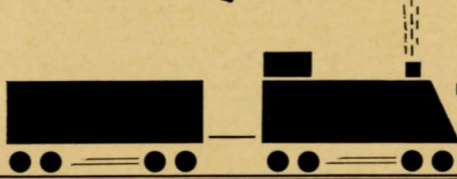


1958



# FOR YOUR NEXT AND BEST SUMMER VACATION

# Visit Glacier National Park



## GLACIER NATIONAL PARK

1,534 square miles of mountain wonderland in the Northern Rockies of Montana — a million-acre paradise of soaring peaks, glittering glaciers, cool green valleys, fast-flowing streams, churning waterfalls and jade green mountain lakes.

Year after year the area's popularity as a summer vacation area increases, yet Glacier remains an unspoiled, uncrowded mountain wilderness with comfortable hotel accommodations at reasonable cost, and an abundance and variety of recreational activity to please everyone. Choose Glacier National Park for your summer vacation this year. ALL TIMES INDICATED ARE STANDARD TIME

### EXAMPLE ITINERARY—(Leave Any Day of Your Choice)

**FRIDAY** — Your Western mountain vacation begins with departure from Chicago Union Station at 10:30 P.M. (CST) over the Burlington Route aboard Great Northern's streamlined WESTERN STAR. Pullman sleeping cars are ready for occupancy at 9:30 P.M. — DeLuxe Day-Nite coaches at 10:00 P.M. Refreshments or a late snack can be had in the colorful Coffee Shop Car.

**SATURDAY** — Early this morning travel is along the picturesque Mississippi enroute to St. Paul, Minnesota. After a brief stop at Minnesota's capital city the WESTERN STAR departs at 8:30 A.M., from Minneapolis at 9:00 A.M., and continues westward over Great Northern rails through Minnesota's famed "Land Of Sky Blue Waters," and the rich agricultural Red River Valley of North Dakota.

**SUNDAY** — After a brief early morning stop at Great Falls, Montana, the streamliner continues its approach to the Rocky Mountains, which rise abruptly from the plains

of northwestern Montana. Arrive at Glacier Park Station, eastern entrance to GLACIER NATIONAL PARK, at 12:20 P.M. (MST), where a friendly western welcome by costumed Blackfeet Indians awaits vacationists. Bellboys will transfer your baggage while you stroll along the flower-bordered path to GLACIER PARK LODGE, gay resort hotel, newly furnished, surrounded by beautifully landscaped grounds, and set against a backdrop of snow-capped peaks. For daytime activity there is a sporty nine-hole golf course, Pitch-and-Putt course, tennis, riding, hiking. The Blackfeet Indians stage tribal ceremonials nightly and there will be a musical show by employees, square dance or other evening amusement.

**MONDAY** — Another grand day at GLACIER PARK LODGE with all meals at your leisure in the picturesque dining room. At 2:15 P.M. depart in open-topped bus for an afternoon motor trip to TWO MEDICINE LAKE. A stop enroute for a quarter-mile hike to Trick Falls of the Two Medicine River, then a scenic launch cruise on Two

Glacier Park Lodge at the eastern entrance to Glacier National Park provides all the essential comforts of the modern hotel.



Rainbow Lounge, colorful cocktail room in Many-Glacier Hotel overlooks Swiftcurrent Lake in Glacier National Park.





# IN THE HEART OF THE... MONTANA ROCKIES

VACATION SEASON JUNE 13 THROUGH SEPTEMBER 10

Medicine Lake before returning to GLACIER PARK LODGE about 5:25 P.M. for a wonderful dinner and gay evening.

**TUESDAY** — After a hearty breakfast, leave GLACIER PARK LODGE by motor coach 8:20 A.M. for an 80-mile morning drive over Blackfeet and Chief Mountain Highways for Waterton Lakes National Park and the PRINCE OF WALES HOTEL, in Alberta, Canada. Room assignment upon arrival at 12:00 noon, followed by lunch. Transfer is provided to the dock in the village of Waterton for a scenic two-hour launch cruise on Waterton Lake to Goat-haunt (in the United States) at the south end of the lake and return. Delicious dinner in the quaint dining room which offers an unusual view of the lake. Imported fabrics and china are featured in the gift shop.

**WEDNESDAY** — After breakfast, leave by motor coach, at 8:30 A.M., for a 53-mile Chief Mountain Highway drive to MANY GLACIER HOTEL, on Swiftcurrent Lake in the very heart of GLACIER NATIONAL PARK. Prompt room assignment for a two-day stay. Here, as everywhere in GLACIER PARK, you will find comfortable accommodations, excellent service and the finest of meals.

**THURSDAY** — At leisure in the grand scenic region of MANY GLACIER HOTEL. A launch trip on Swiftcurrent and Josephine Lakes is included. Easy strolls bring varying views of Grinnell Glacier, the Garden Wall and massed peaks. Trails lead in all directions. Saddle horses, guides and fishing equipment are available.

**FRIDAY** — Breakfast in the gay dining room of Many Glacier Hotel, then at 8:25 A.M., off again in open-top sightseeing buses for one of the really great scenic motor drives in America, which takes you across the Continental Divide via Going-to-the-Sun Highway and spectacular Logan Pass. A short stop is made at the summit of Logan Pass, then the thrilling descent through the beautiful valley of McDonald Creek to LAKE McDONALD HOTEL, which nestles under giant cedars on the shore of Glacier's largest lake. Luncheon is served in the hotel's charming dining room. After luncheon you continue by motor along the shore of the lake to BELTON, Montana, western entrance to Glacier Park, to board the eastbound streamlined WESTERN STAR, departing at 2:55 P.M. Between Belton and Glacier Park Station, the streamliner skirts the southern boundary of Glacier National Park for 60 more miles of spectacular mountain scenery. After a brief stop at Glacier Park Station, the journey continues homeward bound.

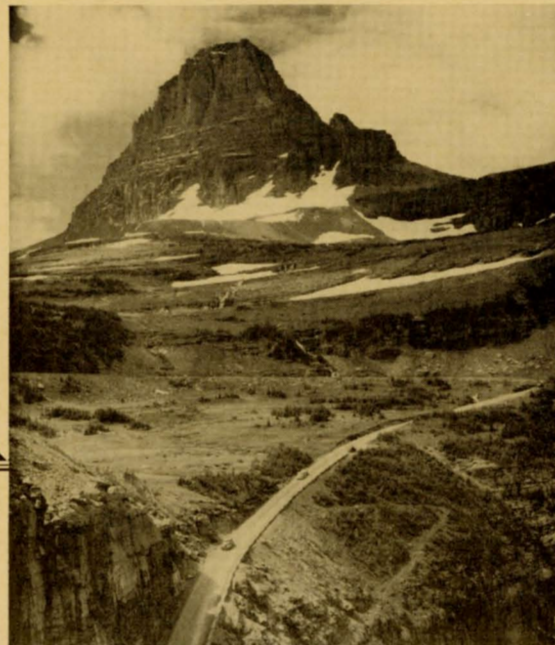
**SATURDAY** — Sightseeing from the wide car windows as the WESTERN STAR speeds across the fabulous Williston Basin, site of the nation's most recent major oil discovery; the undulating prairies and broad, fertile wheatlands of North Dakota, and the rich farm and dairyland of western Minnesota with its more than 10,000 lakes, to arrival in Minneapolis at 9:45 P.M., St. Paul at 10:20 P.M.

**SUNDAY** — The WESTERN STAR arrives CHICAGO UNION STATION at 7:15 A.M., ending a memorable western vacation.

Lofty Mount Rockwell and Two Medicine Lake is one of the most popular scenic centers in Glacier National Park.



Open-top motor coaches provide unobstructed views of spectacular mountains, lakes and glaciers in Glacier National Park.





# ESTIMATED COST OF TRIP

|   | FROM<br>CHICAGO | FROM ST. PAUL-<br>MINNEAPOLIS |
|---|-----------------|-------------------------------|
| Rail Travel in Deluxe Coaches . . . . .   | \$196.07        | \$174.46                      |
| In Pullman sleeping car—first class rail  |                 |                               |
| Two in lower berth, each person . . . . . | 247.83          | 213.50                        |
| One in upper berth . . . . .              | 258.18          | 221.59                        |
| One in lower berth . . . . .              | 267.30          | 228.97                        |
| One in duplex roomette . . . . .          | 271.16          | 232.05                        |
| Two in bedroom, each person . . . . .     | 271.32          | 232.15                        |
| PRICES SUBJECT TO CHANGE WITHOUT NOTICE.  |                 |                               |

## CORRESPONDINGLY LOW VACATION FARES FROM YOUR HOME TOWN

### ITEMS INCLUDED

- ★ Special round-trip first-class or coach railway ticket from Chicago or St. Paul and Minneapolis to Glacier National Park and return.
- ★ Reserved coach seat on WESTERN STAR or (first-class) Pullman accommodations of your choice.
- ★ Motor coach transportation, sightseeing and launch cruises as described.
- ★ Two persons in standard room, with private bath, at hotels for five nights in Glacier Park and Waterton Lakes Park, and all meals American Plan, commencing with dinner Glacier Park Lodge day of arrival, and ending with lunch Lake McDonald Hotel sixth day. Single standard room with bath \$10.00 additional.
- ★ U. S. Transportation Tax of 10 per cent on rail, Pullman, motor coach and launch.

### ITEMS NOT INCLUDED

- ★ Meals on trains.
- ★ Porter's fees, tips, gratuities, personal and incidental items.

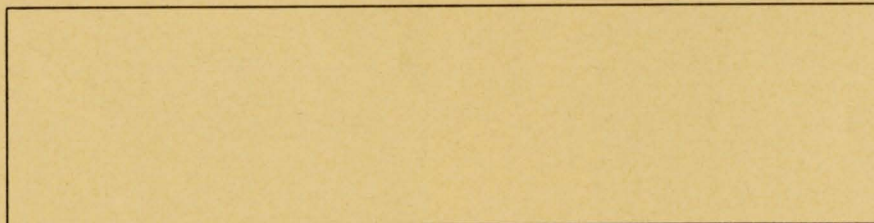
### SPECIAL ITEMS

- ★ The itinerary described in this folder (designation Tour 5W) covers the complete circuit tour of Glacier National Park. Additional days may be added at any hotel for actual cost of room and three meals (American Plan) per day: single with bath \$18.00; double with bath (per person) \$16.00.
- ★ For a full two-week vacation with 10-day tour of Glacier National Park add \$72.00 each person double, \$82.00 single.

**FAMILY PLAN** railway fares offer a substantial saving for departure from initial station on Monday, Tuesday, Wednesday or Thursday. For example, man and wife from Chicago save \$50.22 first-class, \$35.86 coach. From St. Paul, save \$36.77 first-class, \$26.28 coach. Comparable savings on children's fares quoted upon advice of exact ages of children.

*Vacations for as long a stay in Glacier National Park as desired may be arranged.*

**If you are planning a Western Vacation we invite your consideration and further inquiry.**



**Or consult your local travel bureau, railway ticket agent or any Great Northern Railway agent.**