

RATES AND INFORMATION • June 13 to Sept. 15 • 1958 SEASON

HOTEL RATES (European Plan)

(Glacier Park Lodge, Many Glacier Hotel, Lake McDonald Hotel, Prince of Wales Hotel)

	1 Person in Room	2 Persons in Room	3 Persons in Room
Standard	\$10.00	\$ 8.00 each	\$ 7.00 each
DeLuxe	13.50	11.50 each	10.50 each

Note: Rooms without bath at Lake McDonald Hotel — Single \$6.00, Double \$4.00 each, three or more \$3.50 each.

Special Children's Rate

No charge will be made for lodging for children under 12 years of age when occupying same room with adult member of family. Children under 12 years of age in dining rooms pay half-price.

Dining Room Prices at All Hotels

Breakfast \$1.75 each, Lunch \$2.00 each, Dinner \$4.25 each.

RATES FOR MOTOR COURTS (European Plan)

Swiftcurrent Motel and Rising Sun Motel	
1 Person in room	\$12.00
2 Persons in room	\$13.00
3 Persons in room	\$14.00
4 Persons in room	\$15.00

Swiftcurrent Cabins
One-bedroom cabin (1-2 persons) \$6.00
Two-bedroom cabin (2-4 persons) 9.50
These are light-housekeeping cabins . . . centrally-located showers. Linen, pillows, and blankets furnished.

Rising-Sun Cabins
Room with shower (1-2 persons) \$9.25
Room without shower (1-2 persons) 6.50
Non-housekeeping cabins . . . centrally-located showers. Linen, pillows, and blankets furnished.

Note: In cabins, additional persons \$2.00 each. Additional cot \$2.00. Coffee shops located at each of the Motor Courts. **NO WEEKLY RATES AT HOTELS, MOTELS, OR CABINS.**

RESERVATIONS

Request for reservations at all locations (including the Prince of Wales Hotel) should be addressed to the **GLACIER PARK COMPANY** at address shown on previous page. All requests should include the following information:

- (1) Name or Names
- (2) Relationship of Party
- (3) Number in Party
- (4) Ages of Children
- (5) Method of Arrival
- (6) Arrival and departure dates
- (7) Accommodations desired.

All reservations (except tours) are made on the European Plan. American Plan available after arrival.

DEPOSITS

Hotel, motel, and cabin reservations must be accompanied by a deposit equal to the charge for the first night's lodging for the entire party. Deposits will be refunded if reservations are cancelled 24 hours prior to the scheduled arrival date. Deposits are not required on all-expense tours. *Deposits should be made payable to the GLACIER PARK COMPANY.*

TRANSPORTATION

Open-top Scenic-coaches operate on daily schedules between each of the hotels. Chauffeur-driven limousine service is available between locations within the parks. Advance arrangements are required. Rates will be quoted upon application.

TOURS

A variety of all-expense tours from one day to ten days has been arranged for persons using commercial transportation. These tours include all meals, lodgings, and bus and launch transportation while in the parks. Guests on all-expense tours will be accommodated only at the hotels, and only on the American Plan. Rates are computed on the basis of standard accommodations with private bath at all hotels except at Lake McDonald Hotel, where rooms without bath are provided. DeLuxe accommodations, when available, may be obtained after arrival at additional charge.

Tours may be extended to any length. Reservation requests for all-expense tours should contain all items of information listed above (under Reservations) as well as the tour desired.

SEE OTHER SIDE FOR ADDITIONAL INFORMATION



Blackfeet Indians add to vacation fun! Here's a tribal dance on the front lawn.



Kiddies' Korral has a variety of playground equipment.



At Glacier, the sun shines virtually every day — wonderful for golf and sun bathing, too.



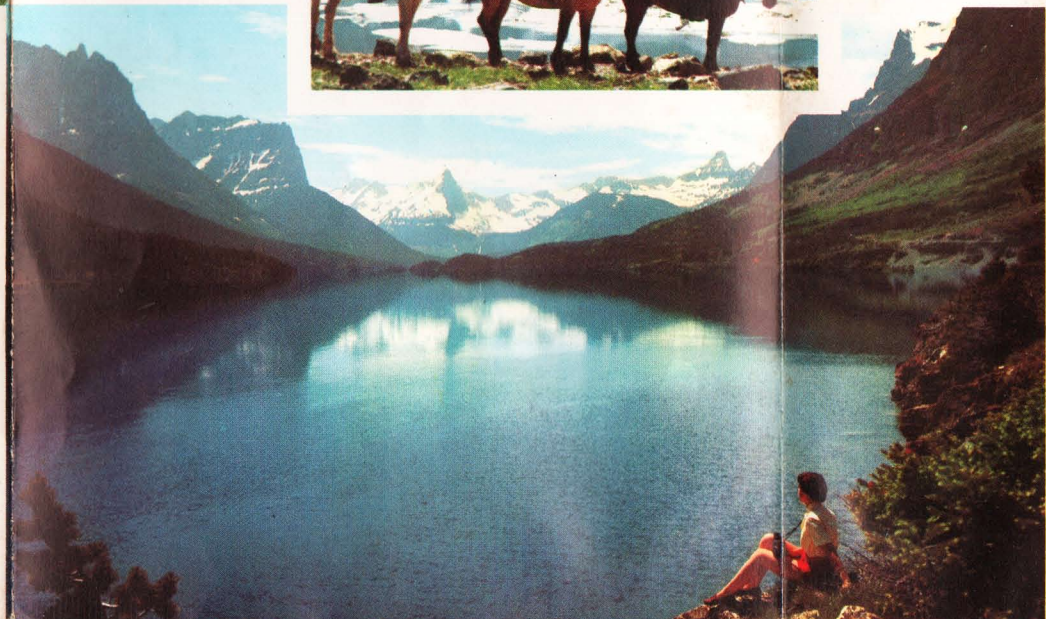
Campfire cookery climaxes a mountain bike.



New tennis courts offer fun at Glacier Park Lodge.

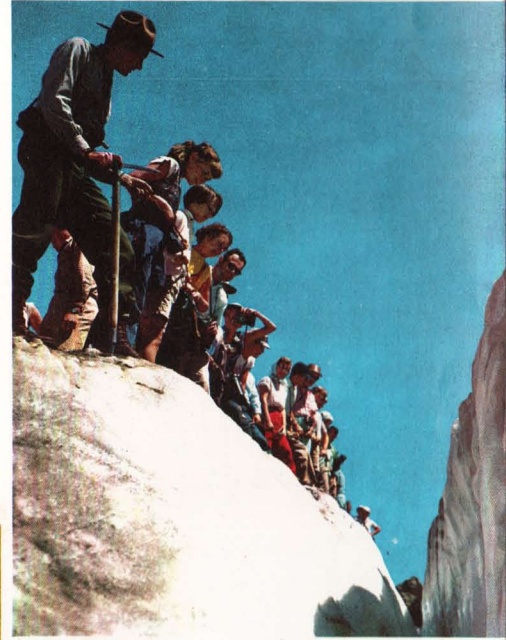


Riders along the shore of Iceberg Lake in mid-park.



Fighting trout lurk in 200 lakes and countless swift-moving streams.

Hikers view a deep crevasse in Grinnell glacier.



Launches cruise on five lakes.



GLORIOUS

Glacier

NATIONAL PARK

MONTANA

GLORIOUS

Glacier

NATIONAL PARK

MONTANA

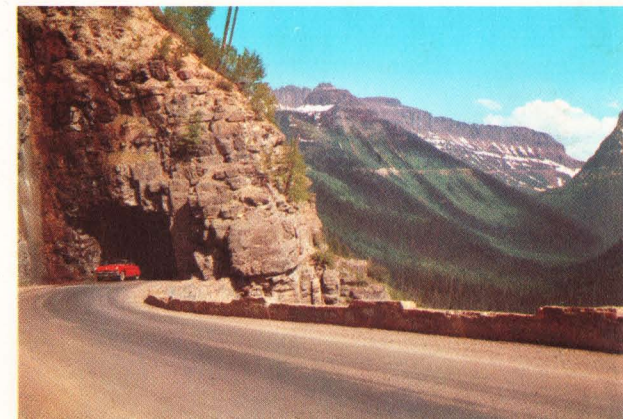
see your travel agent

Glacier National Park is located in Northwest Montana and Southern Alberta, Canada



HOW TO GET TO Glacier

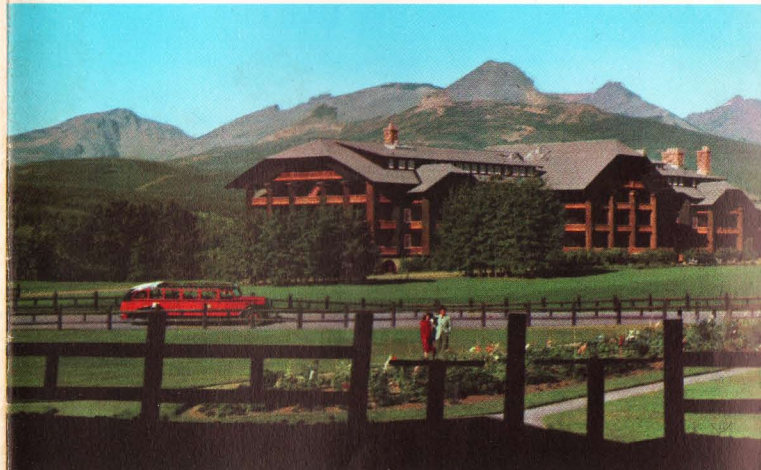
- BY AUTO**
New, modern U. S. Highways Nos. 2, 10, 89 or 93. From Canada, it's a choice of Alberta Highways 2, 5, or 6.
- BY PLANE**
Western Airlines into Cut Bank and Northwest-Orient Airlines to Kalispell.
- BY TRAIN**
Great Northern's "Western Star" stops daily at West Glacier and East Glacier Park.
- BY BUS**
Lines connecting with Greyhound stop twice daily at West Glacier and East Glacier Park.



GOING-TO-THE-SUN ROAD — The world-famous Going-to-the-Sun Road was constructed by Swiss engineers and is considered by many to be the most spectacular in the world.



MANY GLACIER HOTEL — Many Glacier Hotel is surrounded by lakes in the clouds and many glaciers on all sides.



GLACIER PARK LODGE — Breath-taking gardens surround Glacier Park Lodge, which is silhouetted against snow-capped peaks.



PRINCE OF WALES HOTEL — The awe-inspiring panoramic view from the large picture windows of this hotel lures travelers from all parts of the world. Imported chinaware and fabrics are featured in the gift shop.

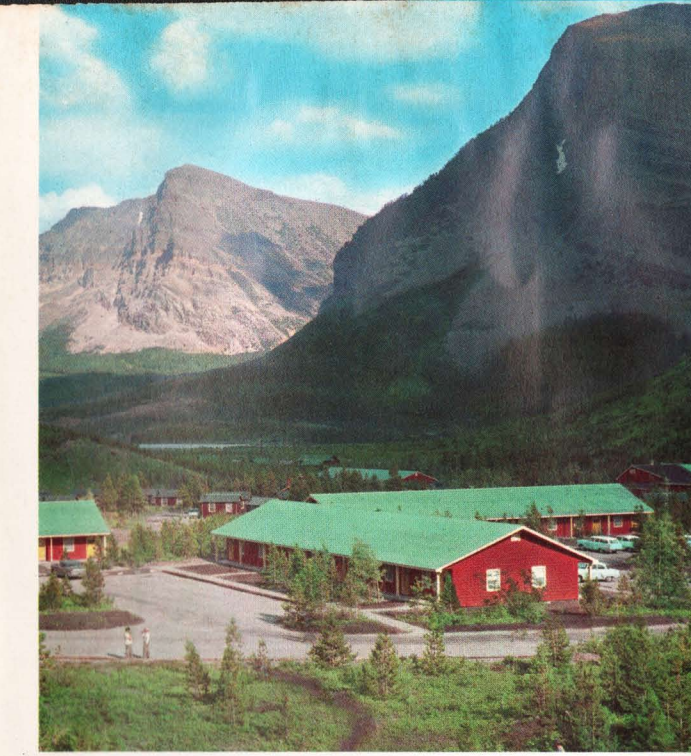
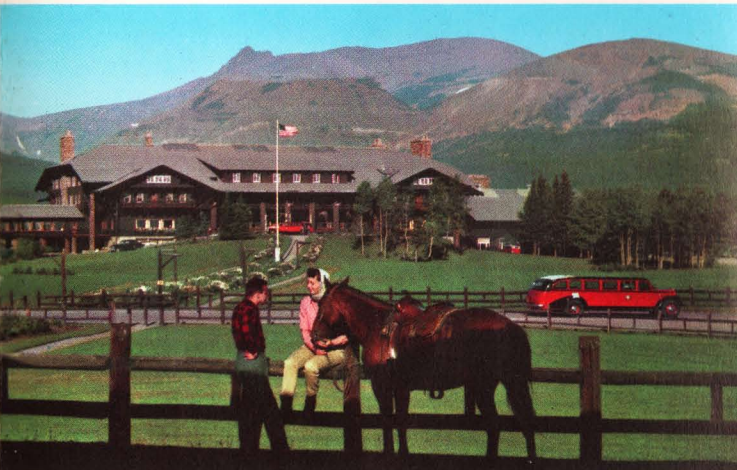
Fun in the Sun!

Something's always going on — Golf, tennis, fishing, horseback riding accompanied by seasoned wranglers, excursion boats, croquet, archery, volleyball, badminton, shuffleboard, horseshoes, cook-outs, swimming, picnicking, sight-seeing, ranger-escorted hiking trips to various glaciers, pitch and putt golf, sun bathing, playground for children, pack trips.

and When Day is Done!

Dancing, cocktails, park naturalist lectures, movies, employees' famous talent shows, musical varieties, Indian ceremonials, card parties, masquerade balls, buffet, chess, ping-pong, dance lessons, sketch-and-paint classes.

No Hay Fever or Asthma in Glacier National Park!



SWIFTCURRENT — In the heart of the glaciers near Iceberg Lake. New motel, housekeeping cabins, coffee shop, gift shop, general store. Thirteen miles west of Babb, Montana.

RISING SUN — New motel, roomy cabins. Coffee shop, general store. Located seven miles west of St. Mary on Going-to-the-Sun Road overlooking beautiful St. Mary Lake.



LAKE McDONALD HOTEL — Serenely located among towering virgin pines on the shore of beautiful Lake McDonald, the largest and deepest in Glacier Park.

General Information

SERVICES AVAILABLE AT HOTELS AND MOTELS

— Excellent dining rooms and coffee shops, beauty and barber shops, doctor, nurses, baby sitters, laundry, valet, newsstands, gift shops, telephone and telegraph, general stores, film shop, boat and motor rentals, fishing equipment, garages and service stations, sight-seeing buses, information desks, Protestant and Catholic church services at all locations.

CUSTOMS — Customs officials will inspect your baggage at the border between U. S. and Canada. You must be able to present proof of citizenship if requested. Your car registration card also is necessary.

FISHING — Over 200 lakes and streams are filled with rainbow, cutthroat, eastern brook, black spotted, Mackinaw and lake trout. No fishing license is needed in the park. For further information write: Superintendent, National Park Service, West Glacier, Montana. In Canada, write: Superintendent, Waterton Lakes National Park, Waterton Park, Alberta, Canada.

WHAT TO WEAR — Let your taste be your guide. You'll find sport and lounging clothes best for relaxation. If golfing, riding, hiking or motoring, we suggest a sweater or warm shirt, sun glasses, etc.

PETS — We suggest pets be left at home because of National Park Service regulations.

For Reservations:

For reservations for all hotels, motels and cabins (including Prince of Wales Hotel) write: Glacier Park Company as follows:

OCTOBER 1 TO MAY 15 MAY 15 TO OCTOBER 1
218 GREAT NORTHERN BLDG. EAST GLACIER PARK
ST. PAUL 1, MINNESOTA MONTANA

(The Glacier Park Company is owned by the Great Northern Railway Co.)

RATES AND INFORMATION • June 13 to Sept. 15 • 1958 SEASON

TEN-DAY HOLIDAY

Start either at East Glacier Park or at West Glacier. Spend three days at Glacier Park Lodge, three days at Many Glacier Hotel, two days at Lake McDonald Hotel and two days at the Prince of Wales Hotel in Canada. Included in the following prices are ten nights' lodging, thirty meals, three lake cruises and five Scenic-coach drives.

	1 Person in Room	2 Persons in Room	3 Persons in Room
10-E or 10-W	\$207.33	\$187.33 each	\$178.33 each
(East or West) (U. S. Transportation Tax Included.)			

FIVE-DAY VACATION

Itinerary commences at the East Entrance (East Glacier Park, Montana). Enjoy two days at Glacier Park Lodge, one day at the Prince of Wales Hotel and two days at Many Glacier Hotel. Something doing every minute! Included in the following prices are five nights' lodging, fifteen meals, three lake cruises and five Scenic-coach drives.

	1 Person in Room	2 Persons in Room	3 Persons in Room
5-W Tour	\$125.33	\$115.33 each	\$110.33 each
(Westbound only) (U. S. Transportation Tax Included.)			

THREE-DAY TOURS

There's a variety in this tour. The Prince of Wales and Many Glacier Hotels are wonderful overnight hosts. It's up to you whether you spend the first night at Lake McDonald Hotel or Glacier Park Lodge. Included in the following prices are three nights' lodging, nine meals, three lake cruises and five Scenic-coach drives.

(Eastbound or Westbound)	1 Person in Room	2 Persons in Room	3 Persons in Room
3-W Tour (West)	\$89.33	\$83.33 each	\$80.33 each
3-E Tour (East)	85.33	79.33 each	76.83 each
(U. S. Transportation Tax Included.)			

(Northbound or Southbound)

Here's a package for through-the-park guests. Start at West Glacier and go out into Canada, or begin in Canada and leave the park at West Glacier after three delightful days. Included in the following prices are three nights' lodging, eight meals*, two lake cruises and three Scenic-coach drives.

	1 Person in Room	2 Persons in Room	3 Persons in Room
3-N (Northbound)	\$68.48	\$62.48 each	\$59.98 each
3-S* (Southbound)	74.48	68.48 each	65.48 each
*3-S Tour includes nine meals. (U. S. Transportation Tax Included.)			

TWO-DAY TOURS

Here's a choice of either Glacier Park Lodge or Lake McDonald Hotel for the first day. Then delight in a carefree day at majestic Many Glacier Hotel. It's a wonderful two days either way. Included in the following prices are two nights' lodging, six meals, two lake cruises and four Scenic-coach drives.

	1 Person in Room	2 Persons in Room	3 Persons in Room
2-W Tour (West)	\$59.23	\$55.23 each	\$53.23 each
2-E Tour (East)	55.23	51.23 each	49.73 each
(U. S. Transportation Tax Included.)			

ONE-DAY STOPOVER

Start with a Two-Medicine lake cruise and enjoy a fun-filled evening at Glacier Park Lodge. Next morning motor over Going-to-the-Sun Road to Lake McDonald Hotel for lunch. Or do it in reverse by starting at Lake McDonald. Included in the following prices are one night's lodging, three meals, one lake cruise and three Scenic-coach drives.

	1 Person in Room	2 Persons in Room	3 Persons in Room
1-W (Westbound)	\$33.40	\$31.40 each	\$30.40 each
1-E (Eastbound)	29.40	27.40 each	26.90 each
(U. S. Transportation Tax Included.)			

For further information and assistance in making reservations, contact your local travel agent, or rail, air, or bus line agency.

SEE OTHER SIDE FOR ADDITIONAL INFORMATION