

ENJOY A SUMMER VACATION IN...

GLACIER NATIONAL PARK

AND

YELLOWSTONE NATIONAL PARK

(WITH OPTIONAL RETURN THROUGH COLORADO AND ROCKY MOUNTAIN PARK)



In all the Rocky Mountain region there is no more beautiful lake than St. Mary.

1957



Enjoy a Summer Vacation in...

GLACIER NATIONAL PARK and

(WITH OPTIONAL RETURN THROUGH CO

Leave any day of your choice—June 13 thru August 27. Monday is shown for example. For FAMILY PLAN rail fare, departure must be on Monday, Tuesday, Wednesday or Thursday.

MONDAY—Your Western vacation begins with departure from Chicago Union Station at 11:10 P.M. (CST) over the Burlington Route aboard Great Northern's streamlined WESTERN STAR.

TUESDAY—Early morning visit to St. Paul and Minneapolis, then westward over Great Northern through Minnesota, the "Land of Sky Blue Water," and the rich agricultural Red River Valley of North Dakota.

WEDNESDAY—Arrive GLACIER PARK HOTEL at 12:20 P.M. Register and receive your credentials for the three-day tour, then depart at 2:15 P.M. for an afternoon motor trip to TWO MEDICINE LAKE, with launch cruise on the lake. Return to GLACIER PARK HOTEL for dinner and an evening of entertainment by Blackfoot Indians.

THURSDAY—After a hearty breakfast, leave by motor coach for an 80-mile morning drive to Waterton Lakes National Park and the PRINCE OF WALES HOTEL in Alberta, Canada. Room is assigned on arrival at 12:00 Noon. Lunch and dinner in the dining room. Optional launch trip is available in the afternoon.

FRIDAY—After breakfast, leave by motor coach at 8:30 A.M. for a 53-mile drive to MANY GLACIER HOTEL on Swiftcurrent Lake in the very heart of GLACIER NATIONAL PARK. Here, as everywhere in Glacier, you will find comfortable accommodations and the finest of meals. Lunch and dinner.

SATURDAY—Today you have one of the really great scenic motor drives in America—across the Continental Divide via Going-to-the-Sun Highway and spec-

tacular Logan Pass. After the great panoramic view on Logan Pass, descend through the valley and arrive at LAKE McDONALD HOTEL for lunch. Continue to BELTON and board the WESTERN STAR at 2:10 P.M. for a wonderful afternoon traveling along the Kootenai River Canyon to arrive SPOKANE, Washington, at 8:15 P.M. Taxi (cost not included) to Northern Pacific Station and depart on the NORTH COAST LIMITED at 10:45 P.M.

SUNDAY—Splendid scenery as the streamliner passes through BUTTE and travels on to LIVINGSTON, arriving 10:45 A.M. Continue at 12:40 P.M. by motor coach to GARDINER, where you board the Yellowstone Park bus to arrive in MAMMOTH HOT SPRINGS at 3:10 P.M. Dinner and overnight accommodation. A limited time is afforded here to rest and relax before commencing your tour of YELLOWSTONE NATIONAL PARK. Visit the colorful terraces and interesting museum.

MONDAY—Breakfast and lunch at MAMMOTH HOT SPRINGS—then off by motor coach through the famous Norris Geyser Basin and past many sporadic geysers to arrive late afternoon at OLD FAITHFUL INN. Dinner and overnight.

TUESDAY—Morning at OLD FAITHFUL. Close to the Inn is the greatest geyser of all, which performs faithfully about every 60 minutes. After lunch, leave by motor coach past Paint Pots and along Yellowstone Lake to Artist Point for the thrilling view of the Grand Canyon of Yellowstone. Arrive GRAND CANYON HOTEL 5:00 P.M. for dinner and overnight.

YELLOWSTONE NATIONAL PARK

(COLORADO AND ROCKY MOUNTAIN PARK)

WEDNESDAY—After breakfast, depart at 9:20 A.M. for a side trip to beautiful Tower Falls and many other interesting sights, including roadside bears. Return to GRAND CANYON for lunch and leave at 1:30 P.M. via the colorful Cody Road to GREEN GABLES INN, arriving 5:50 P.M. for dinner. Evening motor coach 7:45 P.M. drive from CODY to BILLINGS, Montana, arriving 10:15 P.M., for overnight at the NORTHERN HOTEL.

THURSDAY—Morning in BILLINGS, booming Montana town. Leave 1:03 P.M. on NORTH COAST LIMITED, homeward bound.

FRIDAY—Daylight ride along the Mississippi River to arrive CHICAGO UNION STATION at 1:45 P.M. (CST).

Optional Return Through Colorado...

THURSDAY—Morning in BILLINGS. Leave at 1:00 P.M. via Burlington southbound through Wyoming and into Colorado.

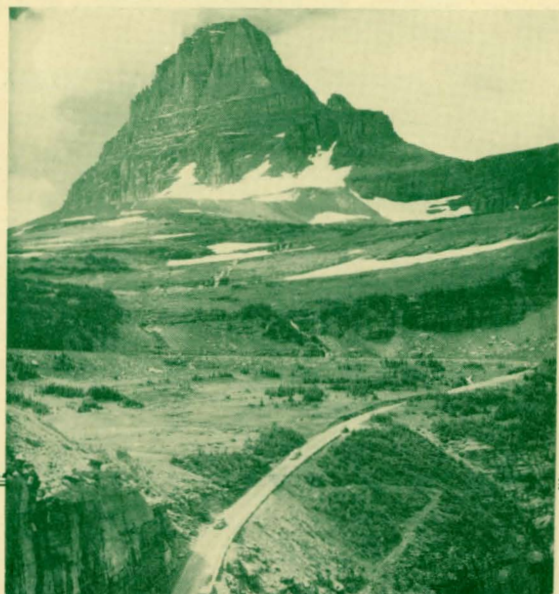
FRIDAY—Arrive DENVER, Colorado, at 7:15 A.M. Leave from the station at 9:15 A.M. for two-day tour of ROCKY MOUNTAIN NATIONAL PARK. Travel via Big Thompson Canyon to ESTES PARK CHALET for lunch, then at 2:15 P.M. continue via Trail Ridge and Continental Divide to GRAND LAKE LODGE for dinner and overnight.

SATURDAY—Breakfast at GRAND LAKE. Leave 8:15 A.M. via Berthoud Pass, Idaho Springs, and Clear Creek to arrive DENVER 11:50 A.M. Afternoon free to shop and visit in DENVER. Leave on Burlington ZEPHYR at 4:00 P.M.

SUNDAY—Arrive CHICAGO UNION STATION at 9:00 A.M.

Lofty Mount Rockwell and Two Medicine Lake is one of the most popular scenic centers in Glacier National Park.

Open-top motor coaches provide unobstructed views of spectacular mountains, lakes and glaciers in Glacier National Park.



APPROXIMATE COSTS

GLACIER — YELLOWSTONE PROGRAM

Includes motor transportation and sightseeing described in Glacier and Yellowstone; seven nights' hotel accommodation, basis twin-bedded room without private bath; six breakfasts, six lunches, and seven dinners.

	Per Person
With COACH SERVICE on trains.....	\$227.04
One in upper berth.....	292.29
One in lower berth.....	302.35
One in duplex roomette.....	306.87
Two in double bedroom, each.....	306.81

Single rooms at hotels—\$12.50 additional

On FAMILY TRAVEL PLAN a man and wife save about \$34.50 total on coach, and \$41.00 First Class.

GLACIER — YELLOWSTONE — COLORADO PROGRAM

Includes motor transportation and sightseeing described in Glacier, Yellowstone, and Rocky Mountain National Parks; eight nights' hotel accommodation; seven breakfasts, seven lunches, and eight dinners.

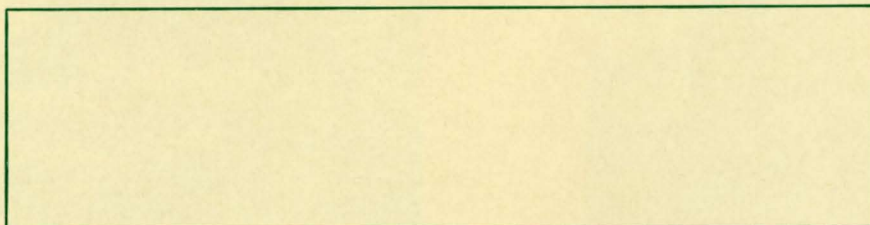
	Per Person
With COACH SERVICE on trains.....	\$253.74
One in upper berth.....	324.55
One in lower berth.....	336.81
One in duplex roomette.....	342.21
Two in double bedroom.....	341.99

Single room \$13.50 additional.

On FAMILY TRAVEL PLAN a man and wife save about \$34.50 total on coach, and \$41.00 First Class.

SERVICES *not included* in the costs quoted above for both plans are meals on trains or in towns or any place other than in National Parks as specified in the Itinerary, baggage handling, tips throughout, expenses of a personal nature.

FOR INFORMATION AND RESERVATIONS



Or consult your local travel bureau, railway ticket agent or any Great Northern Railway agent.

Printed in U.S.A. 3/57/5M