

ARRIVE EDMONDS — from East and North

Western Star	4:54 A. M.
Empire Builder	7:16 A. M.
International	11:38 A. M.
International	4:06 P. M.
Cascadian	4:54 P. M.
International	9:52 P. M.

The westbound Empire Builder and Western Star will stop at Edmonds station to detrain passengers from Chicago, St. Paul, Minneapolis, Spokane and east.

The southbound Internationals will stop at Edmonds station to detrain passengers from Vancouver, B. C.

The westbound Cascadian stops at Edmonds station to detrain passengers from Spokane and intermediate points.

The Incomparable **EMPIRE BUILDER**

LEAVE EDMONDS — to the East and North

International	8:35 A. M.
Cascadian	9:00 A. M.
International	2:30 P. M.
Empire Builder	3:58 P. M.
International	6:56 P. M.
Western Star	10:30 P. M.

The eastbound Empire Builder and Western Star will stop at Edmonds station to receive passengers destined to Spokane, Minneapolis, St. Paul, Chicago and east.

The northbound Internationals will stop at Edmonds station to receive passengers destined to Vancouver, B. C.

The eastbound Cascadian stops at Edmonds station to receive passengers destined to Spokane and intermediate points.

Daily between Seattle-Portland-Chicago via Spokane, Minneapolis and St. Paul. Connections in Chicago to Eastern and Southern Cities. Great Domes . . . for coach and Pullman patrons . . . Ranch Car . . . Dining Car . . . Reclining Coach Seats with Leg Rests . . . Choice of Pullman Accommodations. No Extra Fare.

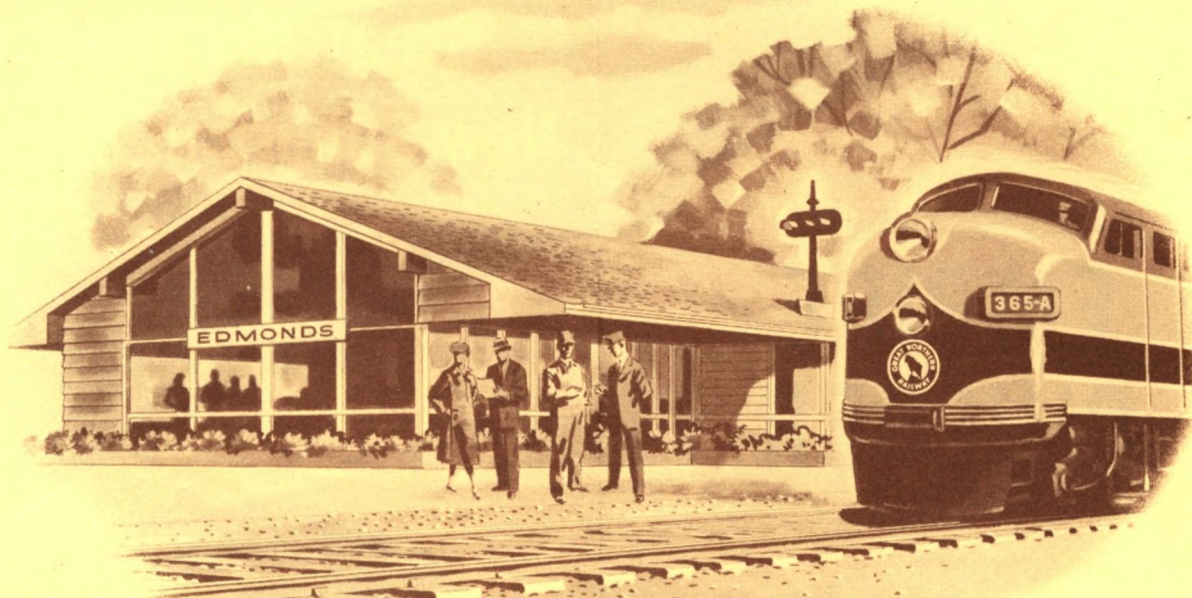
GO GREAT! GO GREAT NORTHERN!



Great Northern's New Suburban Station at Edmonds



North Seattle's
Only Suburban Railway Station



Edmonds Suburban Station is for the greater convenience of Great Northern train travelers. It is within easy driving distance for residents of Seattle's north-end, surrounding communities and the Olympic Peninsula.

Patrons of Great Northern's incomparable Empire Builder and Western Star, daily between Seattle, Spokane, Minneapolis, St. Paul and Chicago, the Internationals between Seattle and Vancouver, B. C. and the Cascadian between Seattle and Spokane, are now afforded the convenience of an attractive new suburban station in Edmonds.

Use of the Edmonds suburban station by residents of Seattle's north-end, surrounding communities and the Olympic Peninsula, will save many miles of city driving for Great Northern patrons traveling to and from Spokane, Minneapolis, St. Paul, Chicago and Vancouver, B. C.

A spacious, fenced and well-lighted parking lot adjoins Edmonds station where patrons may leave their automobiles during their trip. Complete information on services of the Empire Builder, Western Star, Internationals and Cascadian trains is obtainable from any Great Northern ticket agent or by phoning, writing or calling on:

S. T. THORSON, General Agent, Passenger Dept.
4th at Union, Seattle, Wash. **SENECA 1900**

TICKET OFFICE, King Street Station,
Seattle, Wash. **SENECA 1900**

E. P. GALBREATH, Ticket Agent,
Edmonds, Wash. **GREENWOOD 2411**

