

# VACATIONS

*in the Land of Shining*

*Mountains*



GRINNELL LAKE AND GLACIER



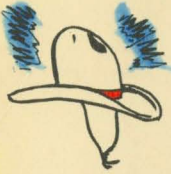
**GLACIER NATIONAL PARK  
WATERTON LAKES PARK**



# WESTERN

as a Ten-Gallon Hat

and High, Wide and Handsome for Complete Vacations



A mouthful, but it's the way you will feel about Glacier National Park, once that special brew of mountain air, sunshine, scenic splendor and easy-going Western hospitality takes over your body and soul.

A quick-acting elixir, too! The Great Northern Railway's distinguished Empire Builder introduces you to friendly folk on your arrival—and then it begins to happen. There's an urge to haul off and bounce pesky cares and worries off the tops of those purple peaks. You are reminded that this is your vacation...that here you are in Montana and Glacier National Park, and that it's going to be the grandest holiday in your life.

"Land of the Shining Mountains," Glacier National Park is in northwestern Montana, right where the rugged Rocky Mountains begin their majestic march across America. North of Glacier's 1,500 square miles of inspiring grandeur is Canada's smaller, yet spectacularly scenic Waterton Lakes Park. Connected by a splendid highway and a launch route across a deep, peak-guarded lake, the two recreational areas form the Glacier-Waterton International Peace Park.

Enough geography, eh? You want to know what to do in Glacier National Park during the season, June 15 through September 15.



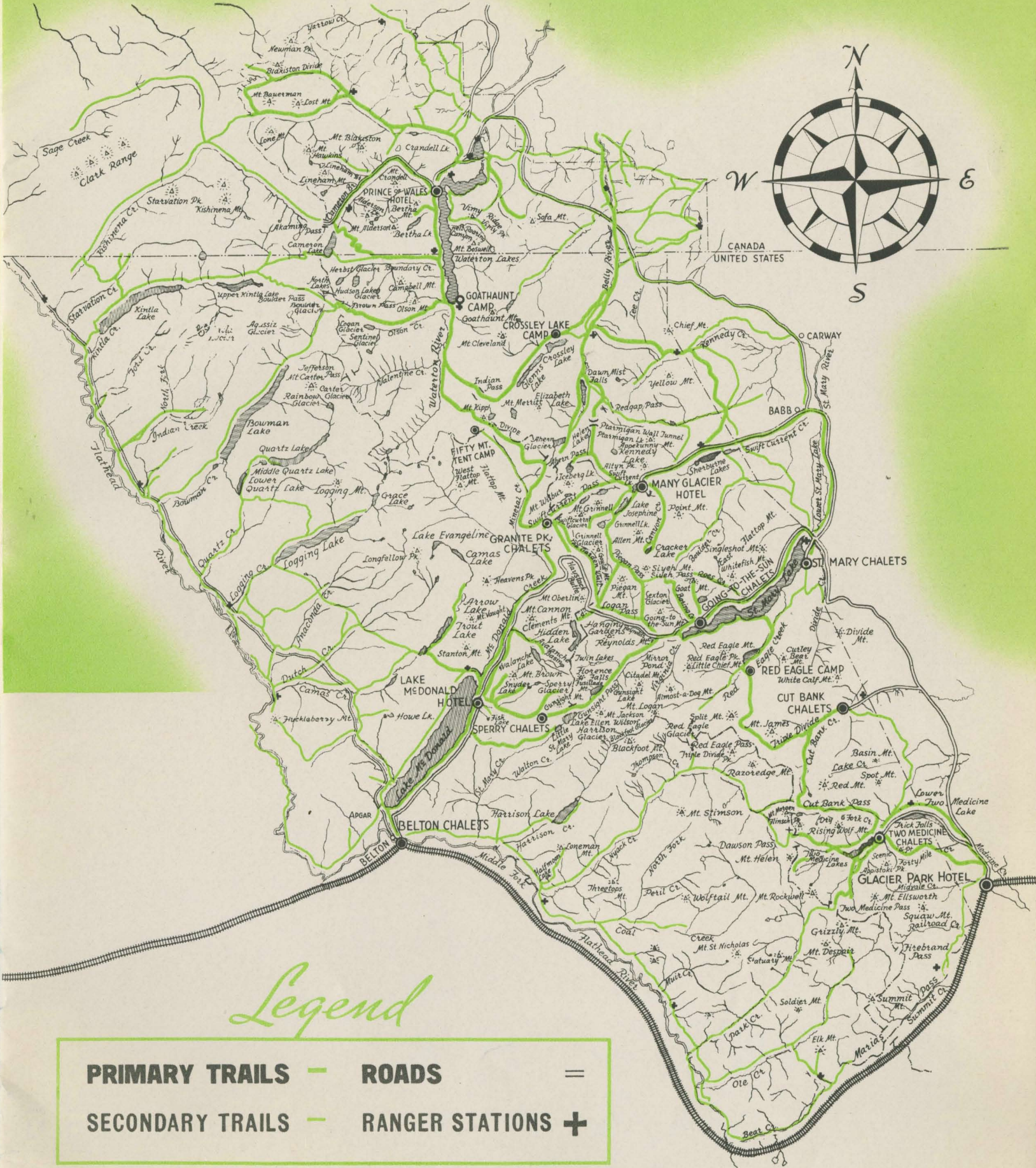
Perhaps you thrill to a trout's flashing fight and the press of swift water against your booted leg. Then step this way to Glacier for some of the finest trout waters in the land!...Hiking? One thousand miles of easy-grade trails and a real glimpse of America's most beautiful wilderness...Saddle horse trips over the same trails on sturdy, sure-footed animals, and guided by men who know the mountains...Swim in blue, zestful waters of glacial lakes, cascading streams or indoor pools...Thrilling launch trips on world-famed mountain lakes...Tackle a peak and experience the excitement of climbing Nature's skyscrapers...Go hunting—with a camera in a million-acre outdoor studio and click off prize pictures to your heart's content...

Camp...Drink in Glacier's glories from comfortable buses on wide, smooth highways...Visit the colorful Blackfoot Indians in their park camp or on their reservation adjoining Glacier...Golf on a sporty, grass green course.

And now for a few graphic ideas of what your vacation can be like. With every picture is a friendly invitation to spend your summer's holiday in Glacier National Park—western as a ten-gallon hat, and high, wide and handsome for complete vacations.



# A TRAIL MAP.. Glacier National Park .. Waterton Lakes Park



## Legend

<b>PRIMARY TRAILS</b>		<b>ROADS</b>	
<b>SECONDARY TRAILS</b>		<b>RANGER STATIONS</b>	

← On the Trail to Grinnell Glacier

# Glacier Park Hotel



↑ The Big Log Lodge—modern Glacier Park Hotel at the Eastern entrance.

Glacier Park Hotel, station and snow-capped peaks from the air. ↓

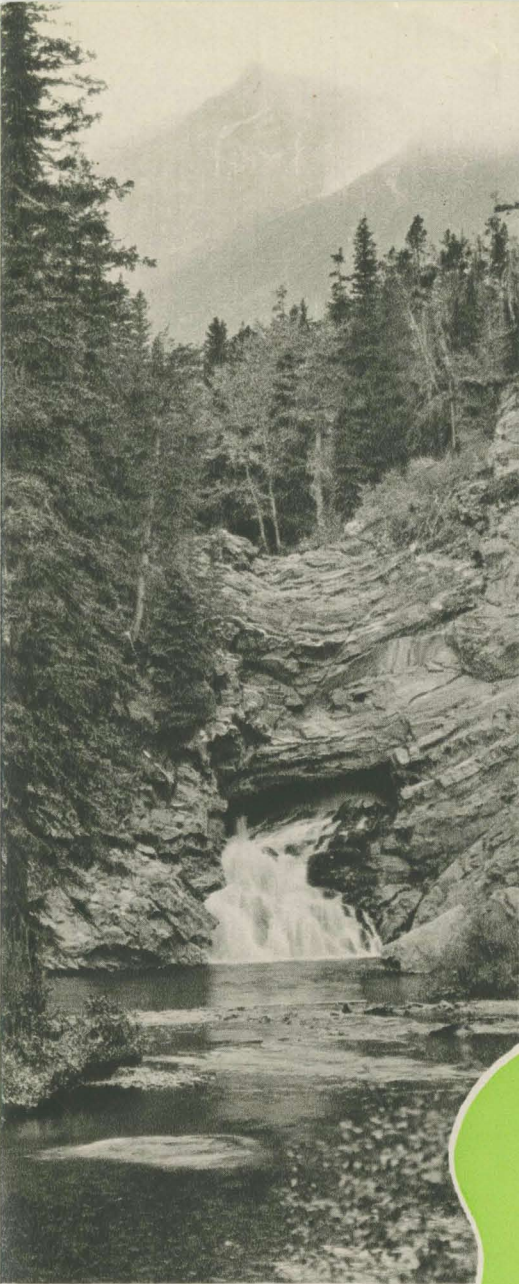
↑ Vacationers leave the Empire Builder at Glacier Park Station.



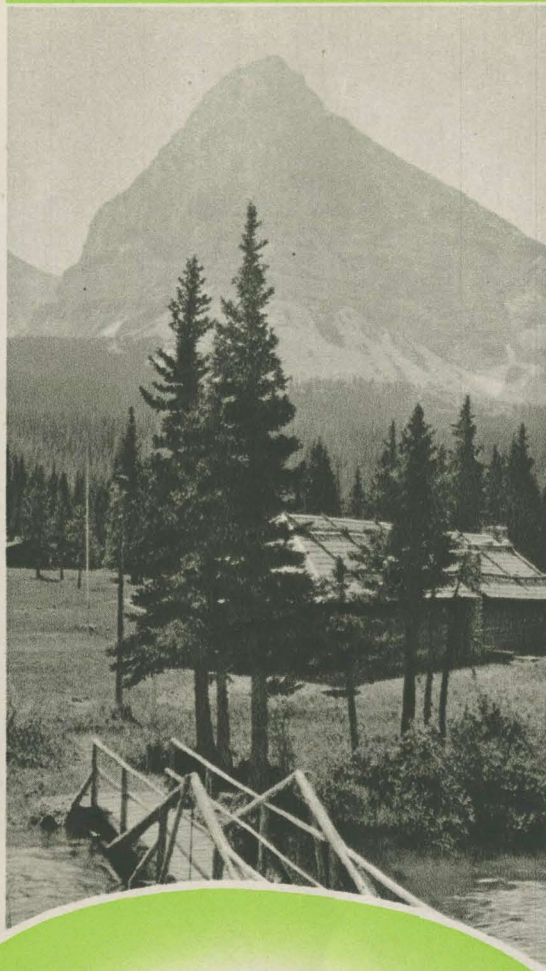
← Wham! Right down the middle on a mountain-side golf course.



Cutbank Chalets.



↑  
Enchanting Trick Falls at low water season.



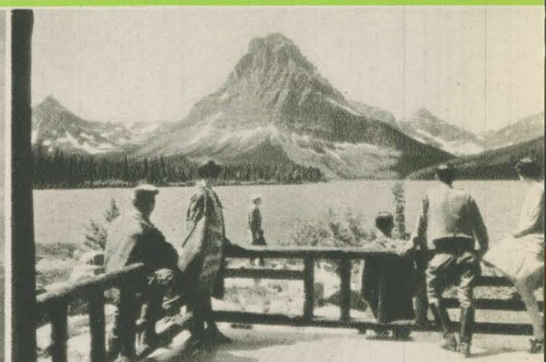
# Two Medicine and Cutbank Chalets



↑  
Mountain water roars over Trick Falls at freshet season.



Evening departure from Two Medicine.



Mount Rockwell from Two Medicine Chalet.

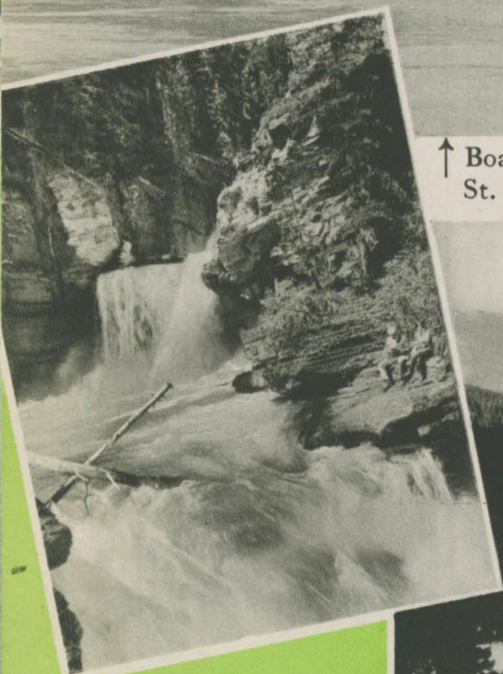
St. Mary Chalets and  
excursion boat landing.



## St. Mary Chalets

↓ Beautiful St. Mary Lake, looking toward Sun camp.

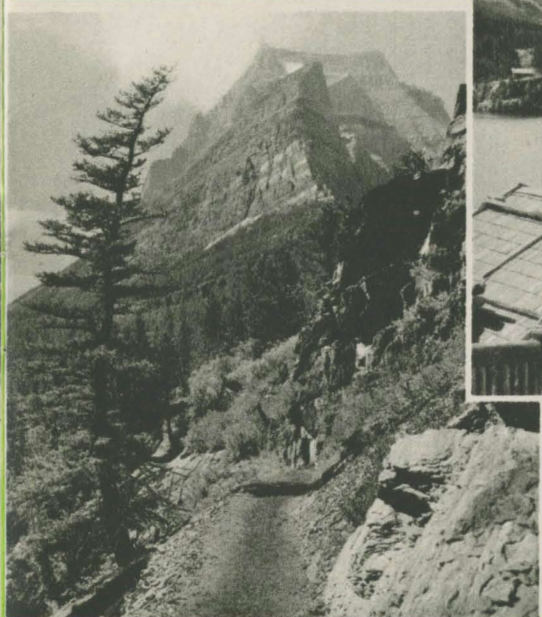
↑ Boating is good on  
St. Mary Lake.



↑ White water tumbles  
over St. Mary Falls.



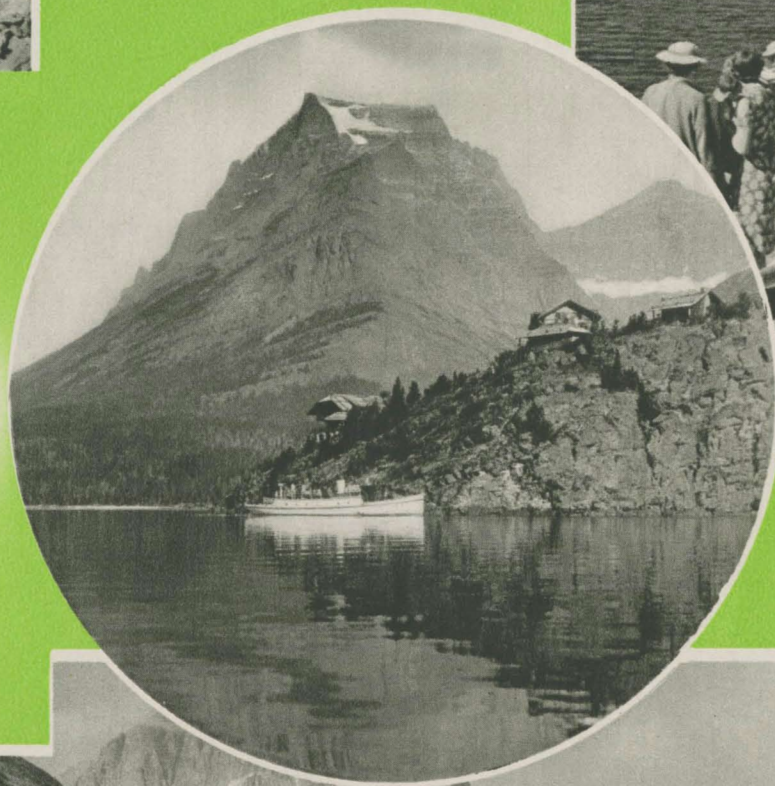
Mountainside trail near  
Going-to-the-Sun Chalets.



↑ Perched high above St. Mary Lake  
are Going-to-the-Sun Chalets.



# Going- to-the-Sun Chalets



↑  
Western shore of St.  
Mary Lake from the  
Chalets.

→  
Romantic Going-  
to-the-Sun moun-  
tain guards pic-  
turesque Sun  
camp.

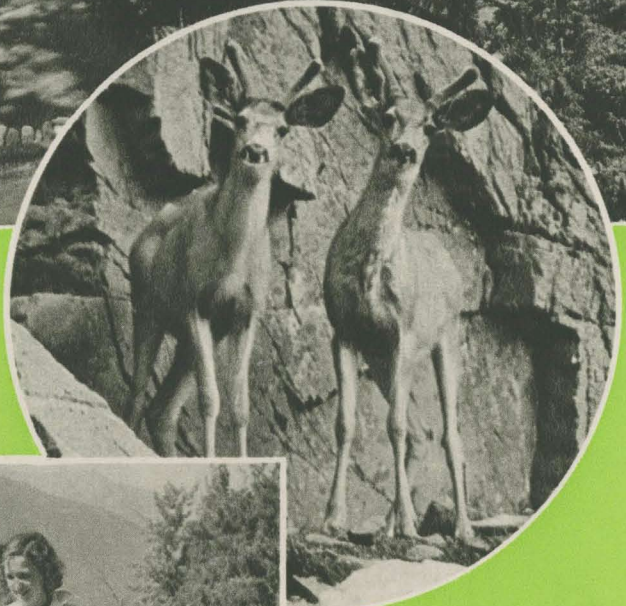


→  
Central Chalet at  
Sun camp.

Lake McDonald Hotel,  
near Belton, Mont.,  
Western entrance to  
Glacier Park.



# Lake McDonald Hotel



↑ Black-tail deer pose for an alert cameraman.



← Two fair visitors feed Buck, pet deer at Lake McDonald Hotel.

Tranquil Lake McDonald, superb  
trout water, mirrors Mount Cannon.

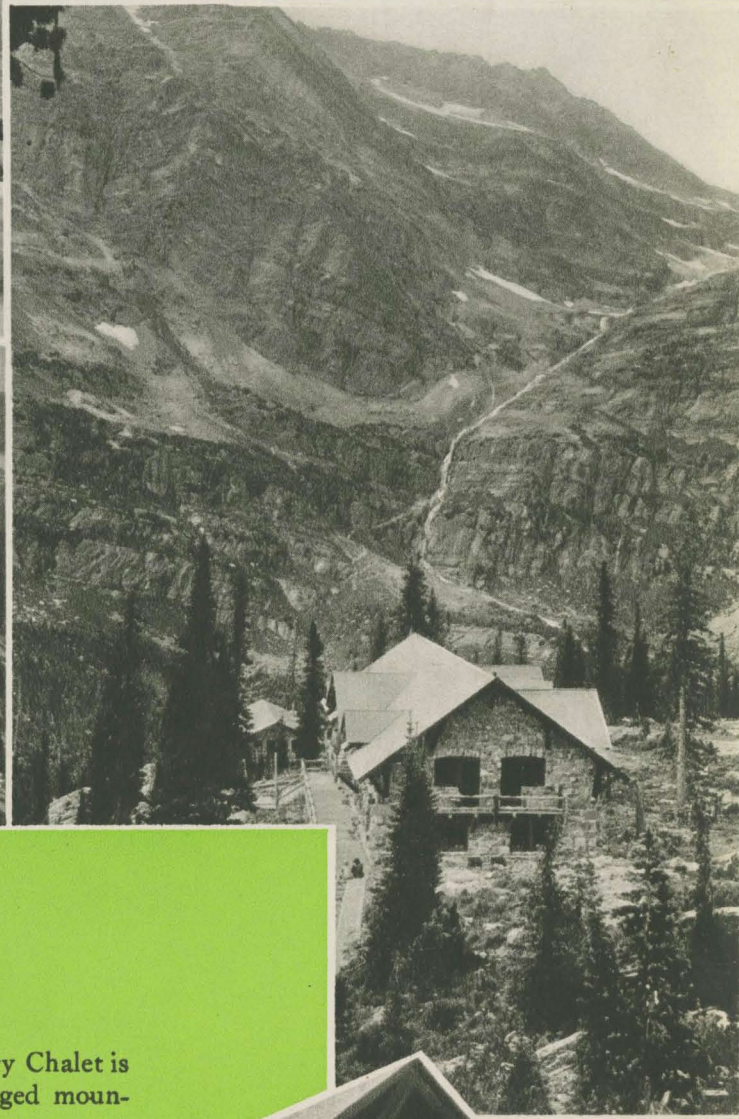




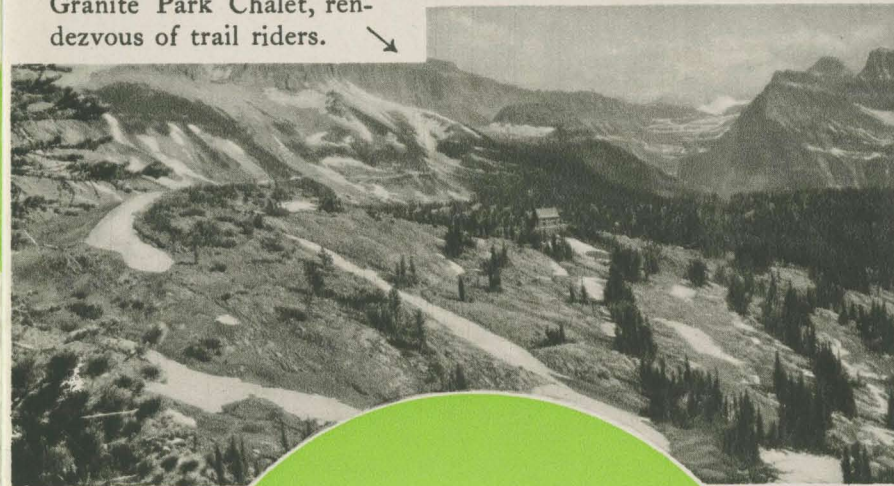


← Sperry Glacier high among Glacier's peaks.

Rugged, rustic Sperry Chalet on the West side of Glacier Park.

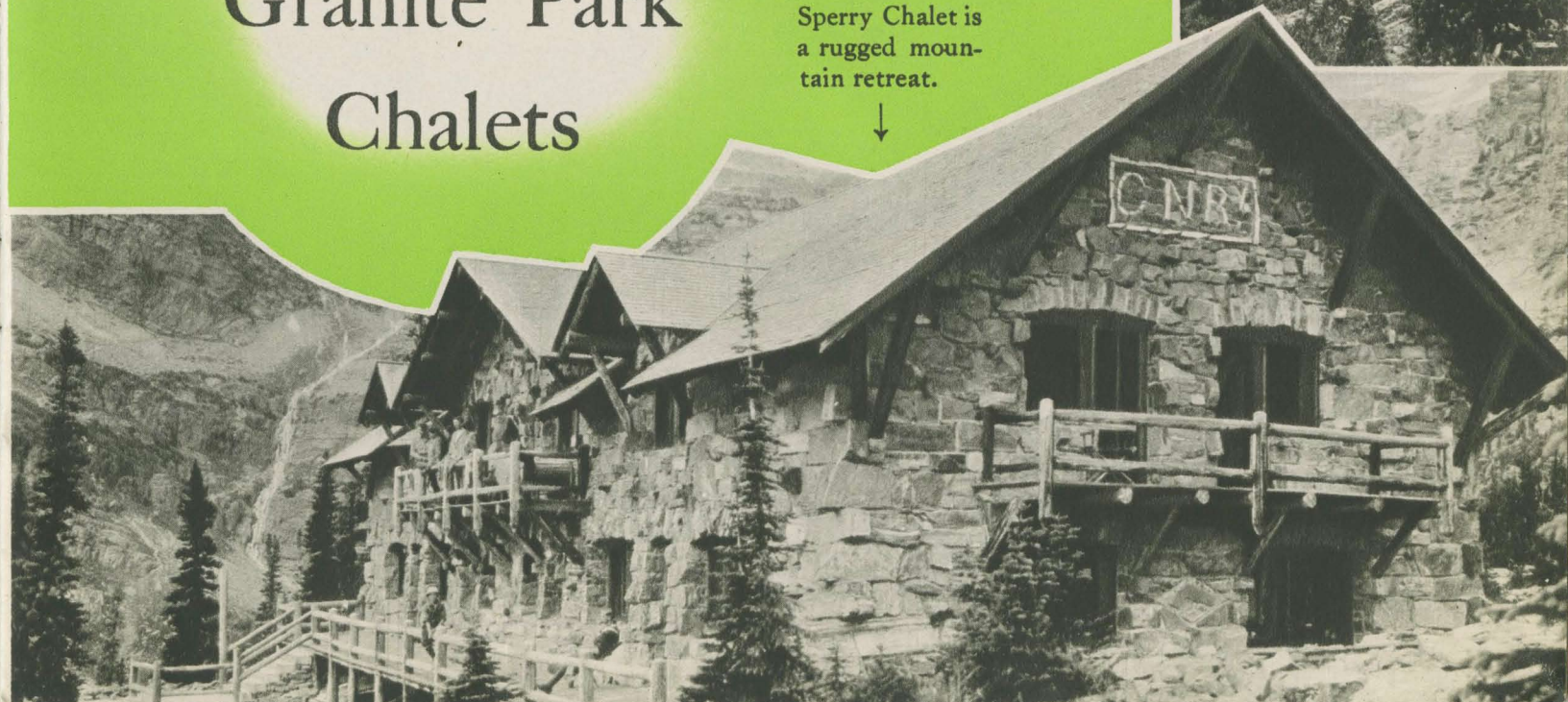


Granite Park Chalet, rendezvous of trail riders. ↘



# Sperry and Granite Park Chalets

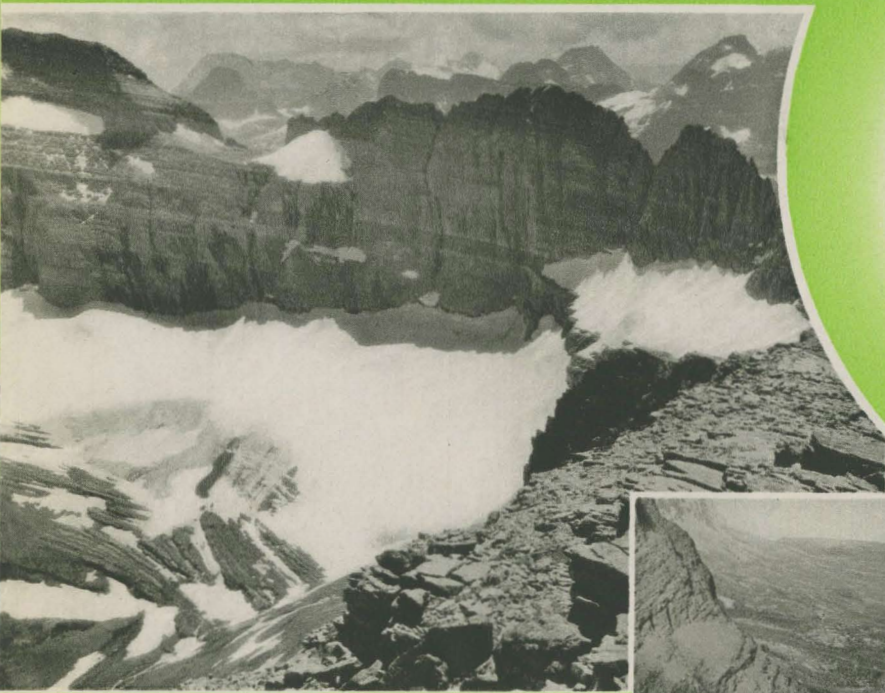
Sperry Chalet is a rugged mountain retreat.





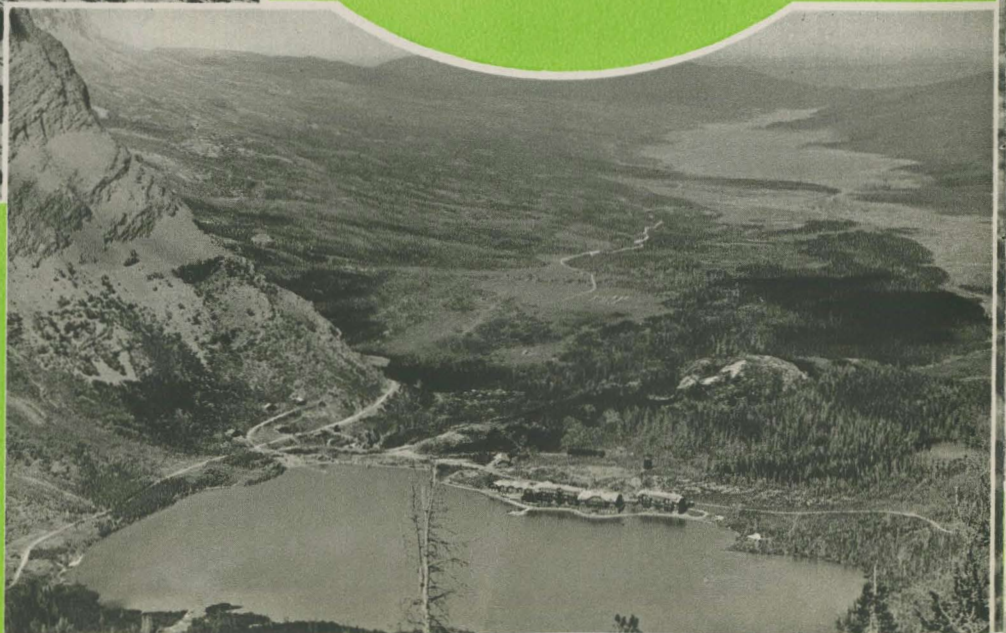
↑ Center of activity in Glacier Park is big, modern Many Glacier Hotel on Swiftcurrent Lake.

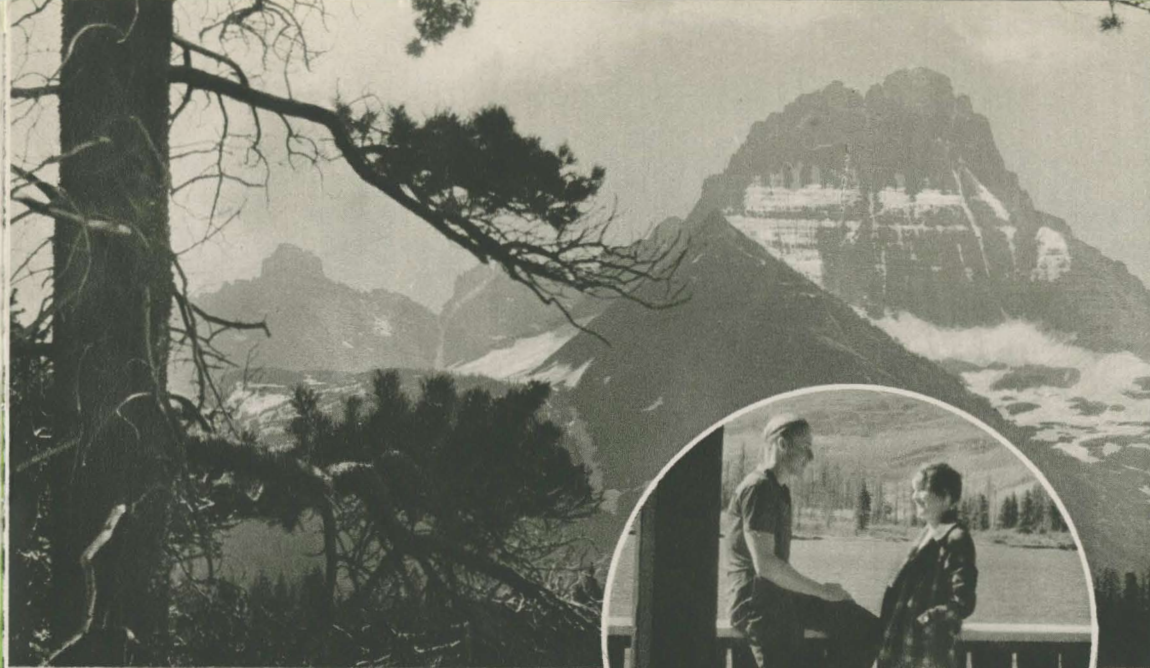
# The Many Glacier Hotel Region



↑ Famed throughout the world is Grinnell Glacier. Above the glacier is the Garden Wall.

Eagle's eye view of Many Glacier Hotel and the park country to the East. →

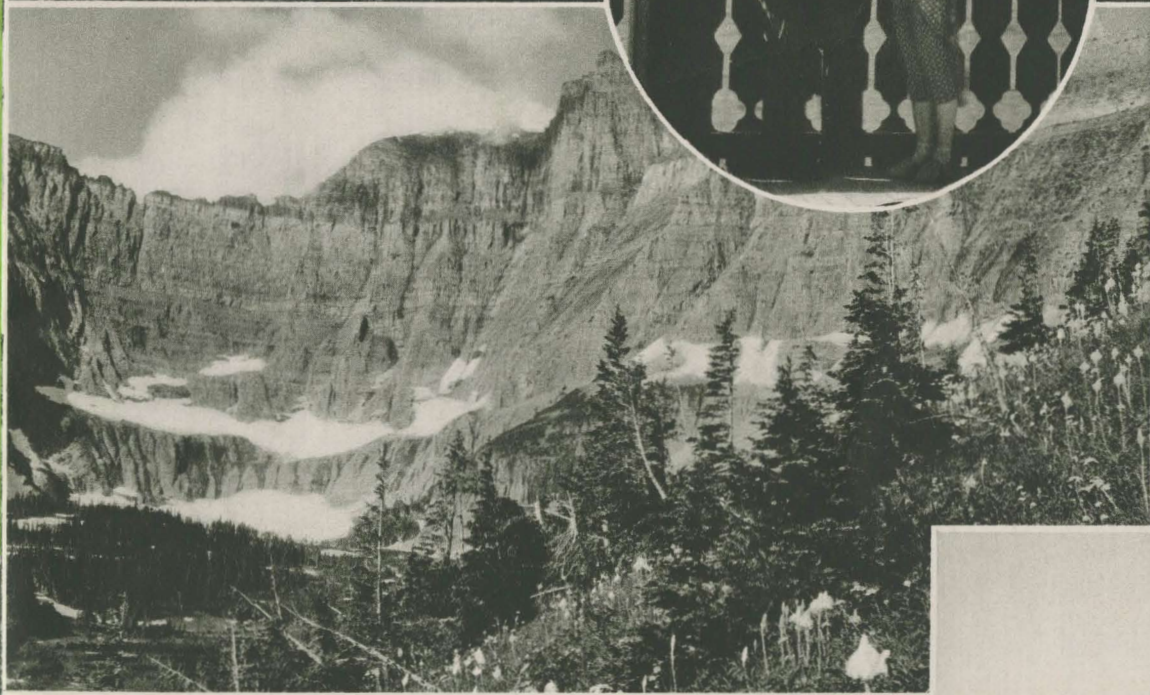




← Mount Wilbur stands sentinel over Many Glacier Hotel and Swiftcurrent Lake.



← Boy meets girl on the lake-side veranda of Many Glacier Hotel.

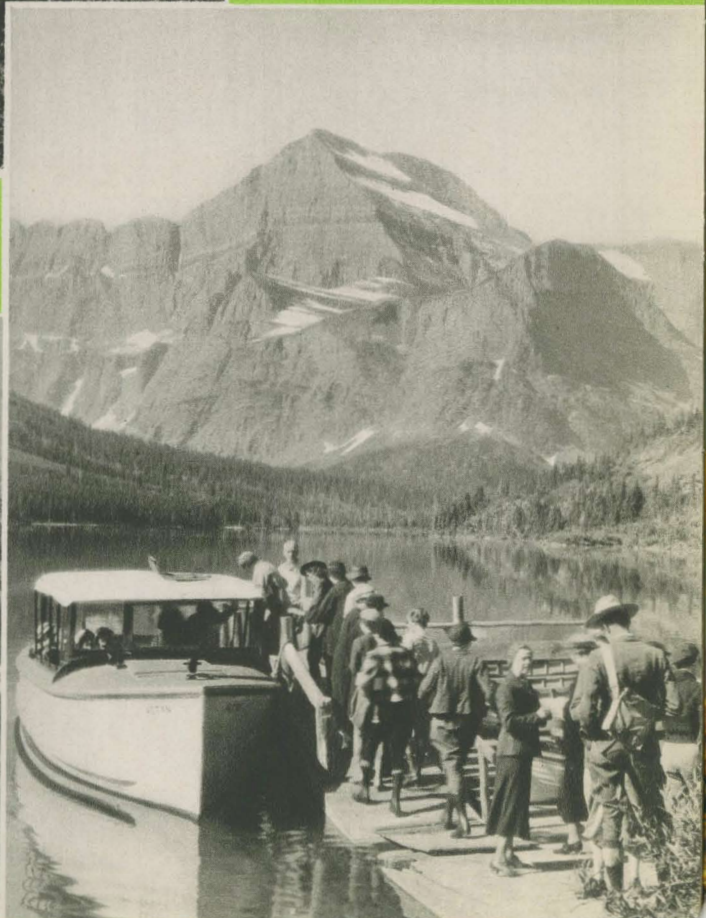


← Towering, rainbow-hued walls guard Iceberg Lake in Many Glacier region. Bear grass in foreground.

Few park visitors forego the launch excursion on Lake Josephine.



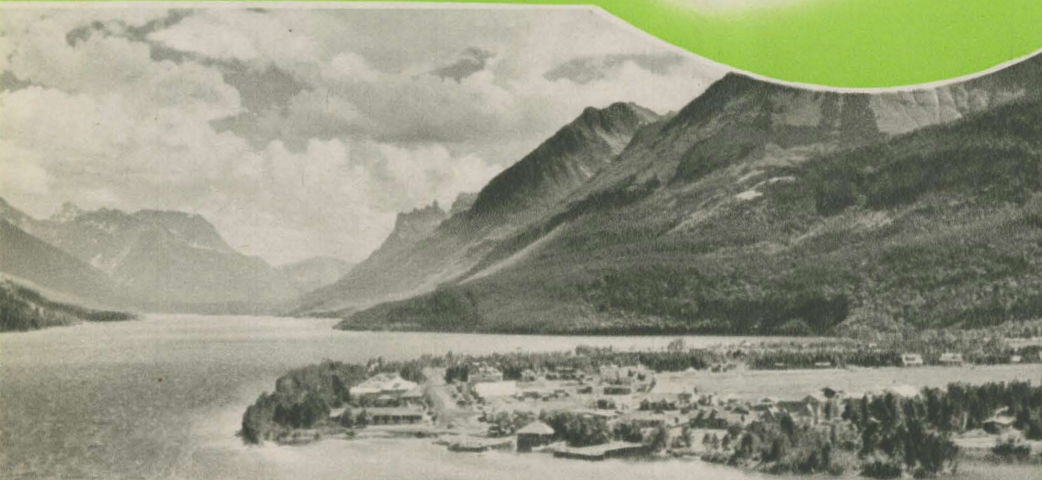
Gem of Glacier Park's many lakes is Josephine, fed by Grinnell Glacier.





↑  
The dining room in Prince of Wales Hotel.

The village of Waterton and the towering Canadian Rockies.  
↓



↑ Prince of Wales Hotel in Waterton Lakes Park, Canada.

Beyond the lobby in Prince of Wales Hotel is Waterton Lake.  
↓



↑  
The boundary between the United States and Canada is not an imaginary line.



← Visitors revel in scenic glories of Glacier Park.



# Going-to-the-Sun Highway

(Over Logan Pass)

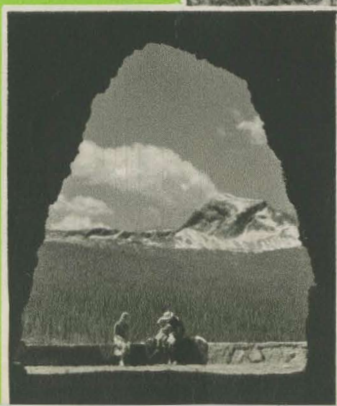


↑ High turn on spectacular Going-to-the-Sun highway.



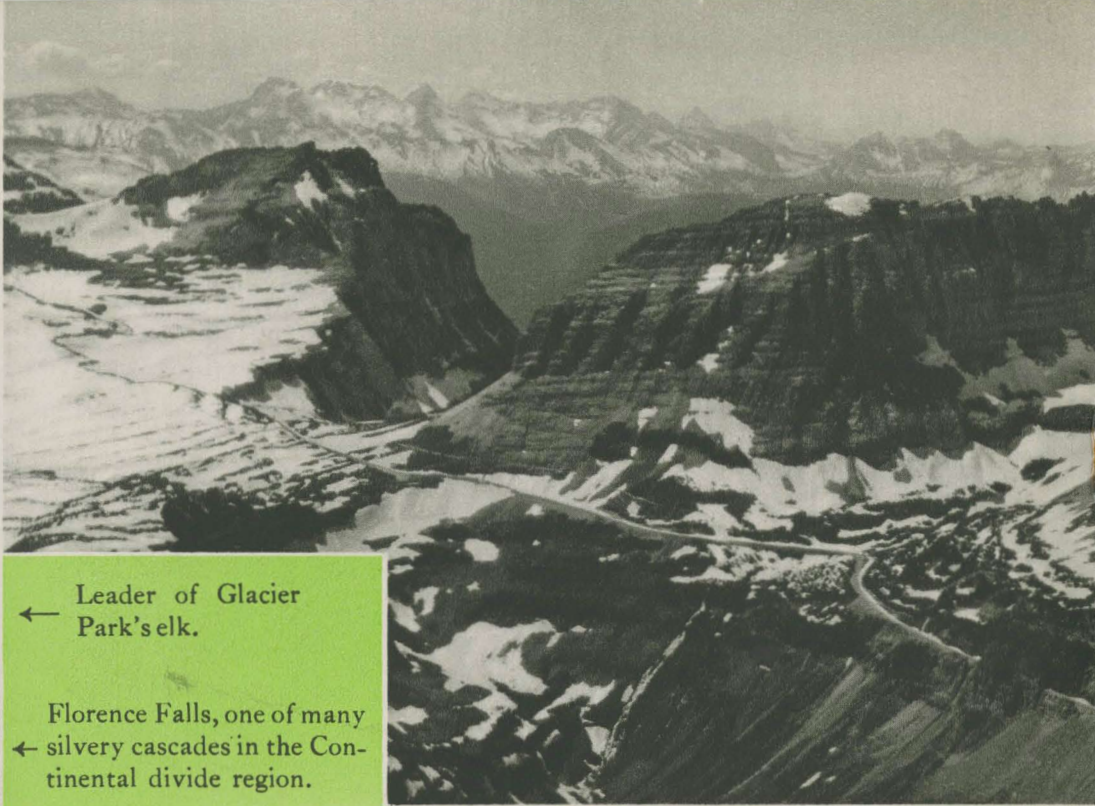
Approaching Logan Pass and ↑ Mount Clements.

Roadside waterfall on Going-to-the-Sun highway. →



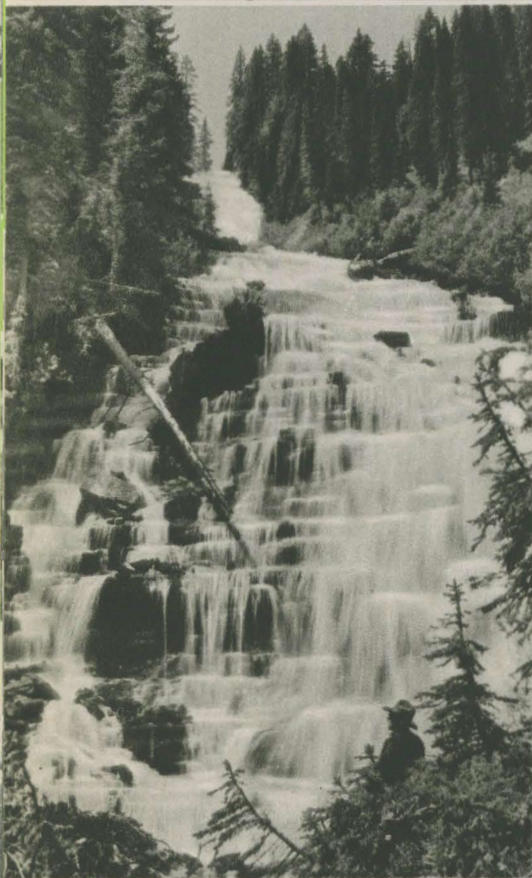
Heaven's Peak from Ptarmigan tunnel. →





← Leader of Glacier Park's elk.

← Florence Falls, one of many silvery cascades in the Continental divide region.



↑ Specta  
Sun h

# The Continental Divide and the West Side

Bighorn sheep settling an argument. ↓



Boulder Glacier and peak. ↑



panoramic panorama of Going-to-the-Sun Highway to Logan Pass.

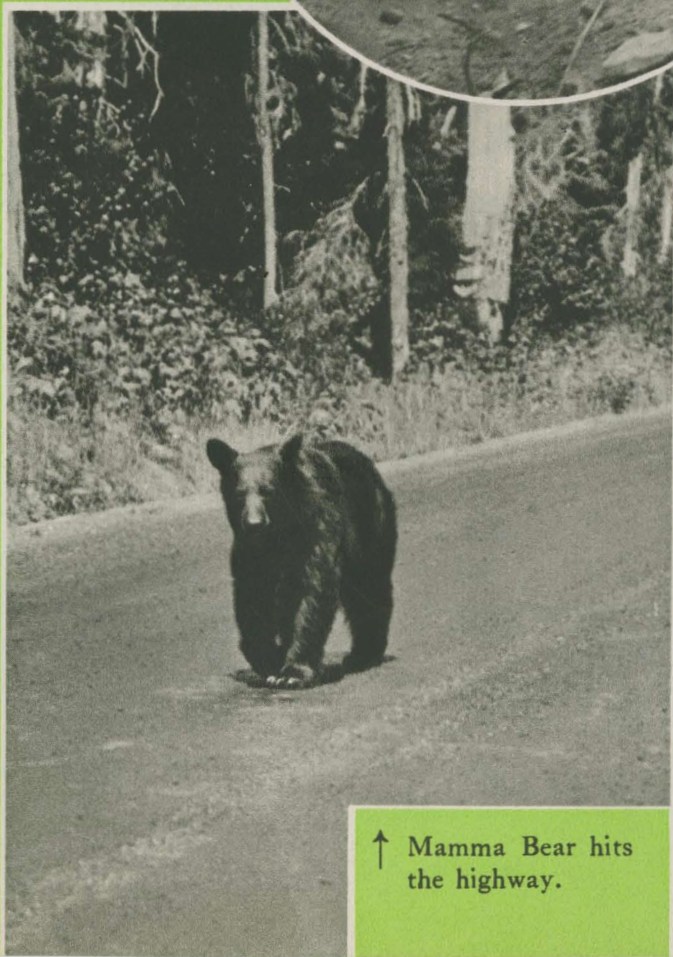


↑ His bewhiskered majesty, a Rocky Mountain goat, symbol of Glacier Park.

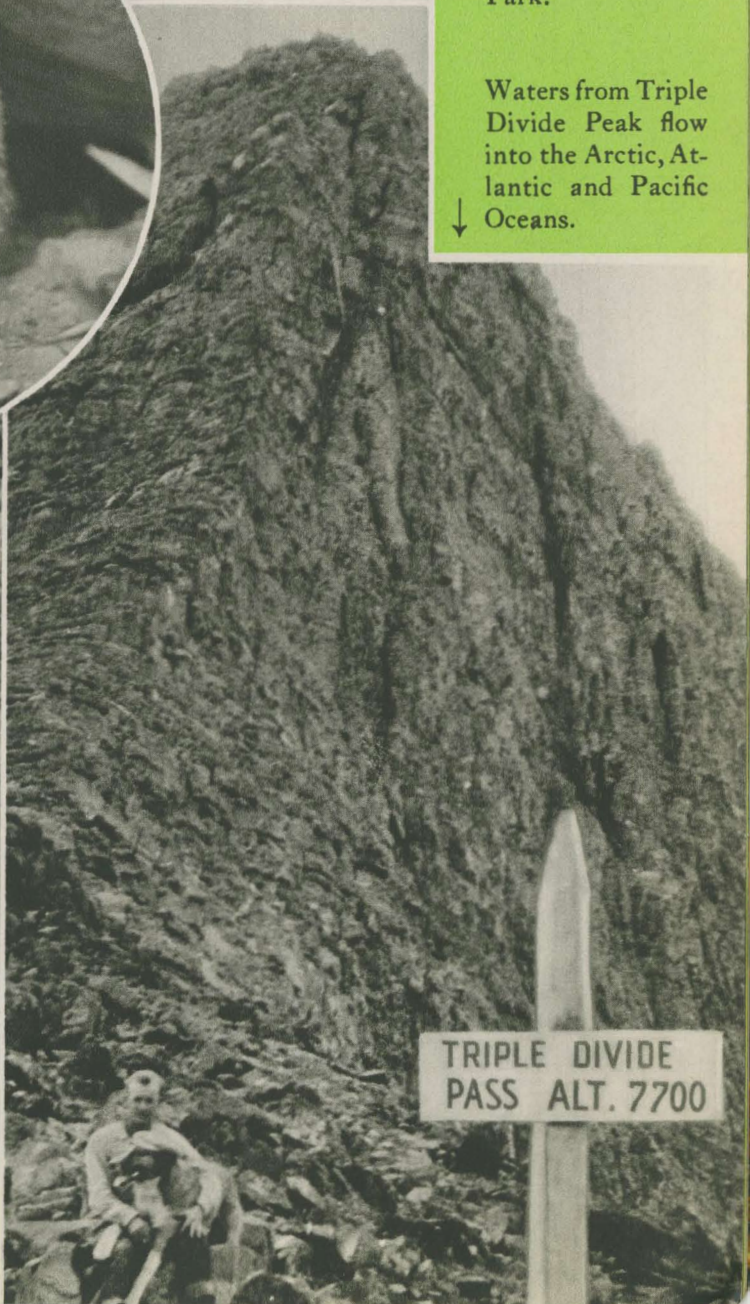


A whistling marmot. →

↓ Waters from Triple Divide Peak flow into the Arctic, Atlantic and Pacific Oceans.

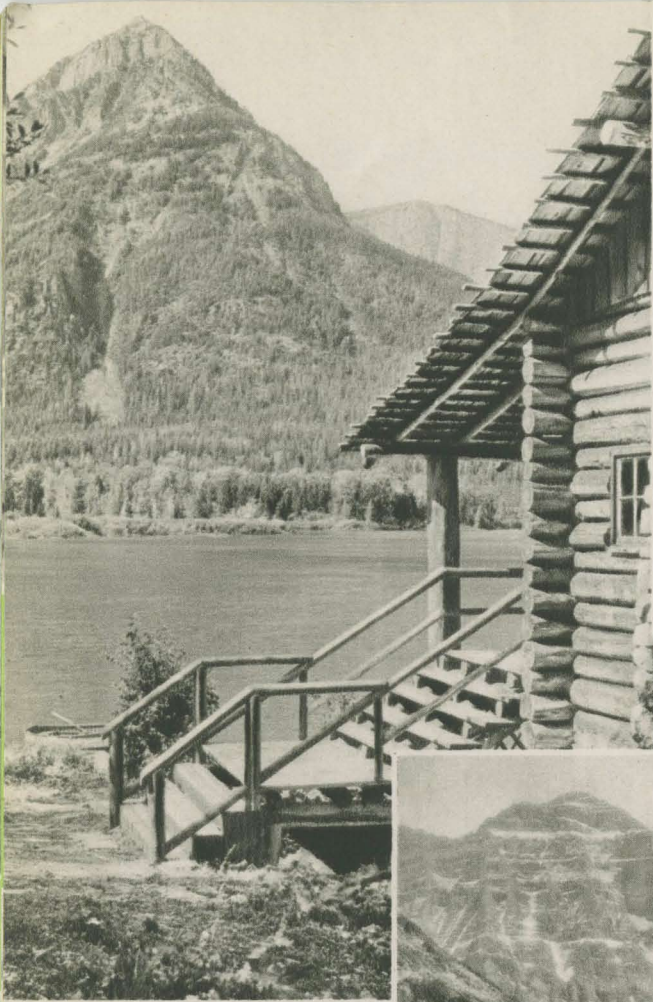


↑ Mamma Bear hits the highway.



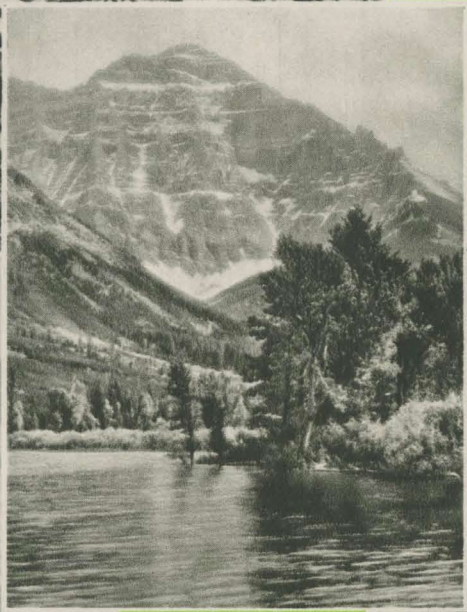
TRIPLE DIVIDE PASS ALT. 7700

Lake Helen and Ahern Glacier.

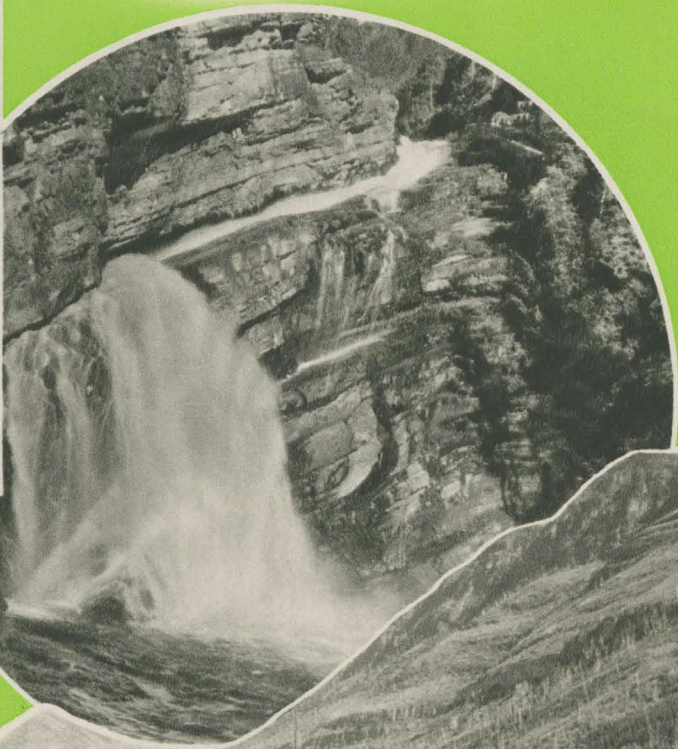


← Entrance to Goathaunt Chalet and Mount Olson.

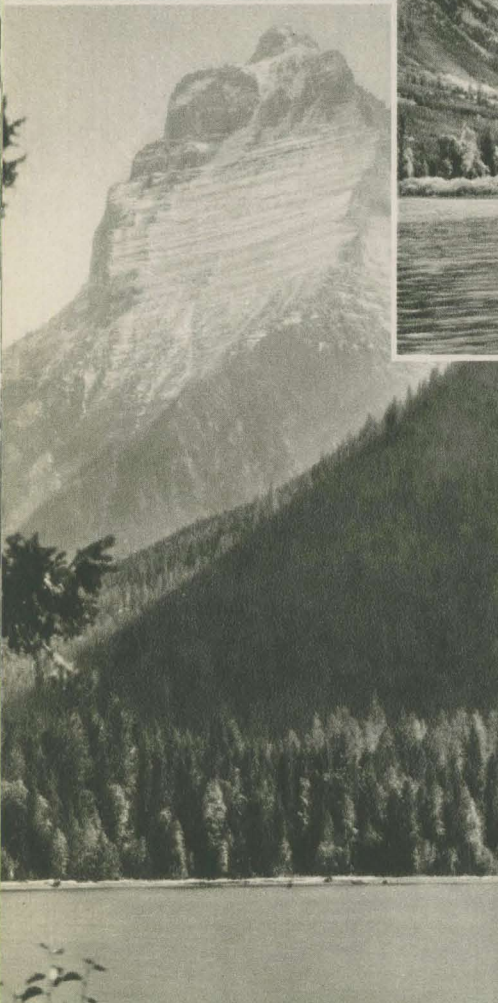
# The North Country



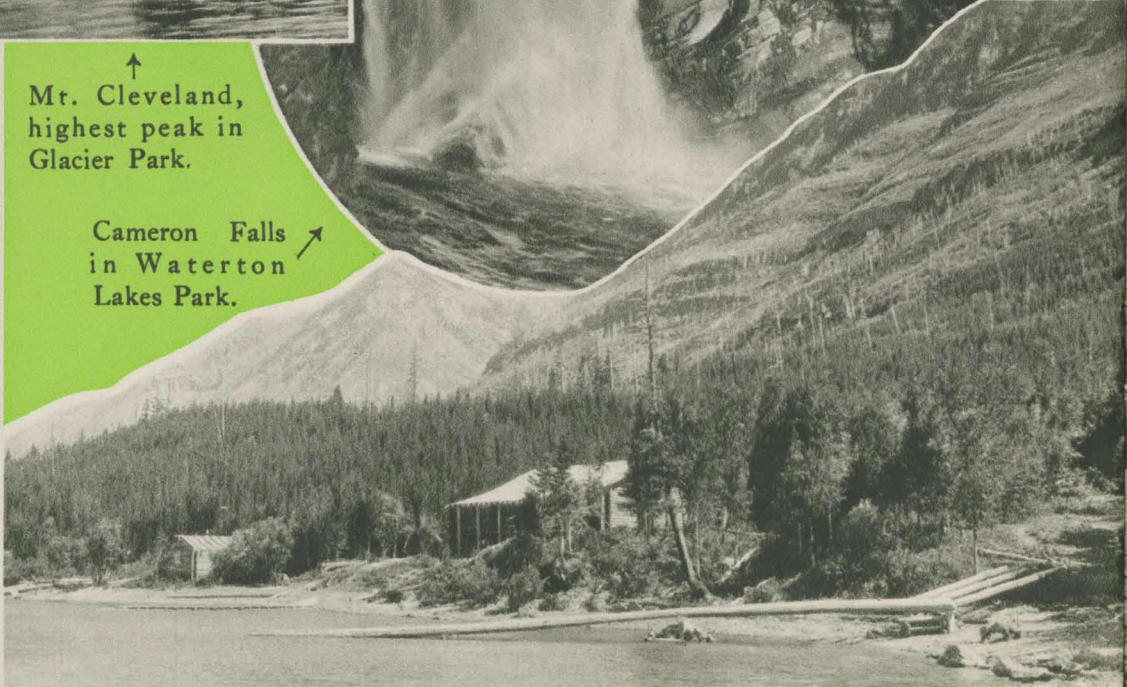
↑ Mt. Cleveland, highest peak in Glacier Park.



↗ Cameron Falls in Waterton Lakes Park.



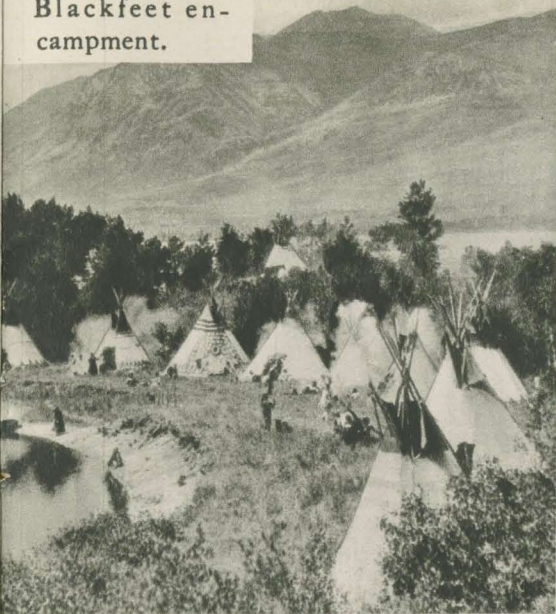
Kinnerly Peak from Kintla Lake.



Goathaunt Chalet on Waterton Lake.



Blackfeet en-  
campment.

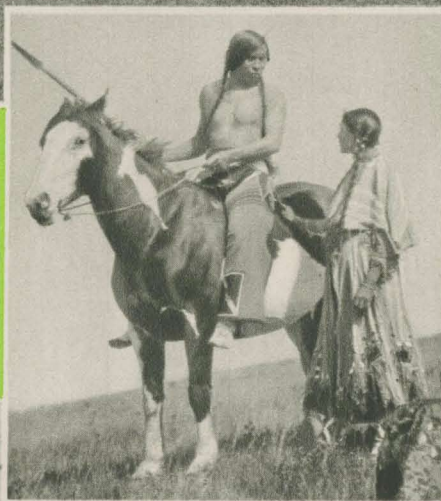


# Blackfeet Indians

Yellow Kidney Jr. in his  
glad rags.

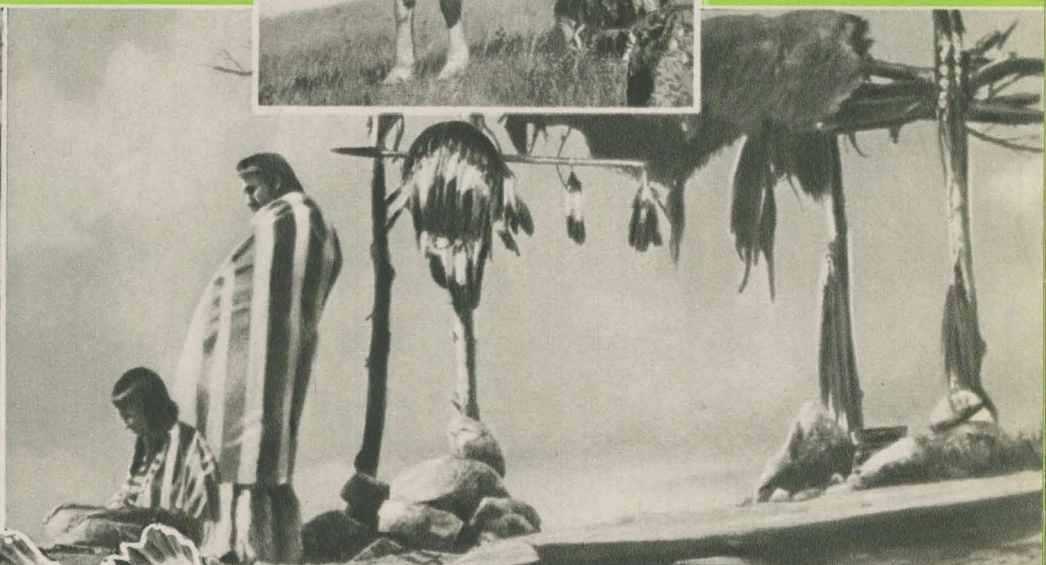


Blackfeet tribute  
to the dead.



↑ Most photograph-  
ed Indians in  
America are the  
Blackfeet in  
Glacier National  
Park.

← Indian talk.



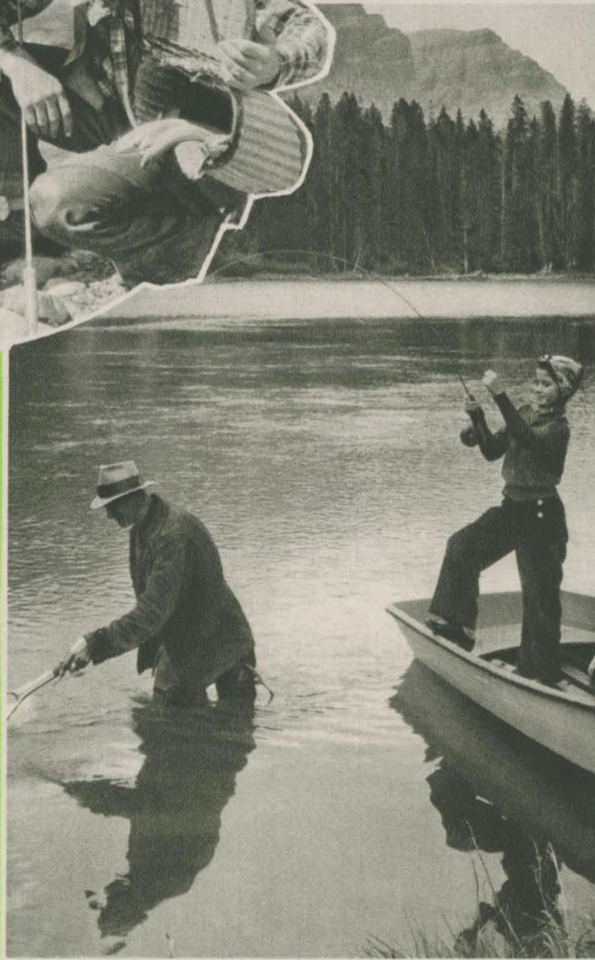
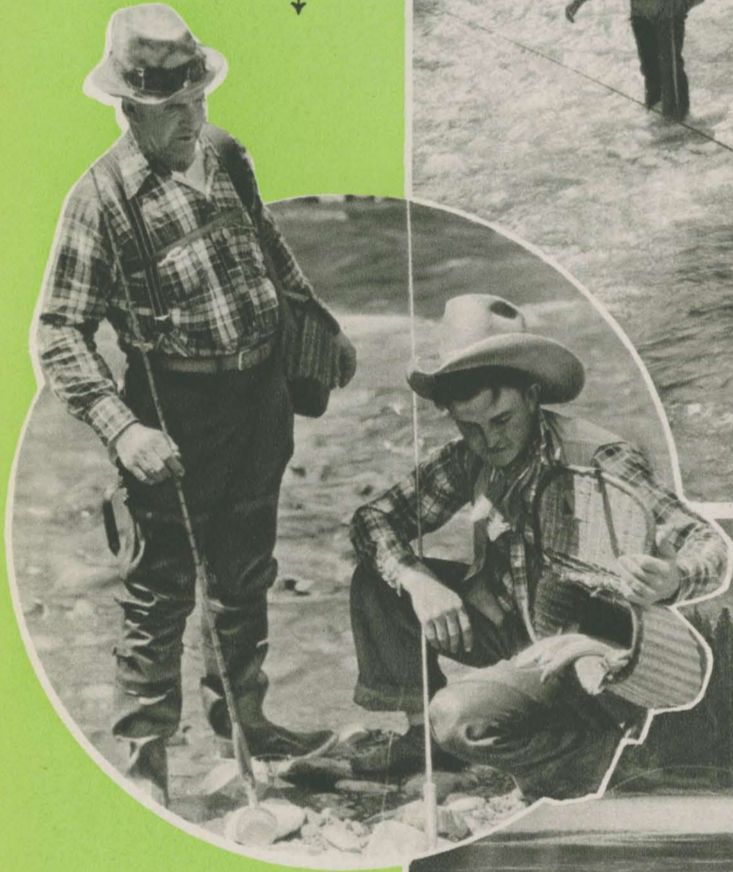
Blackfeet Indians meet the Empire Builder at Glacier Park Station.

Rainbows are gamey in →  
Grinnell creek.

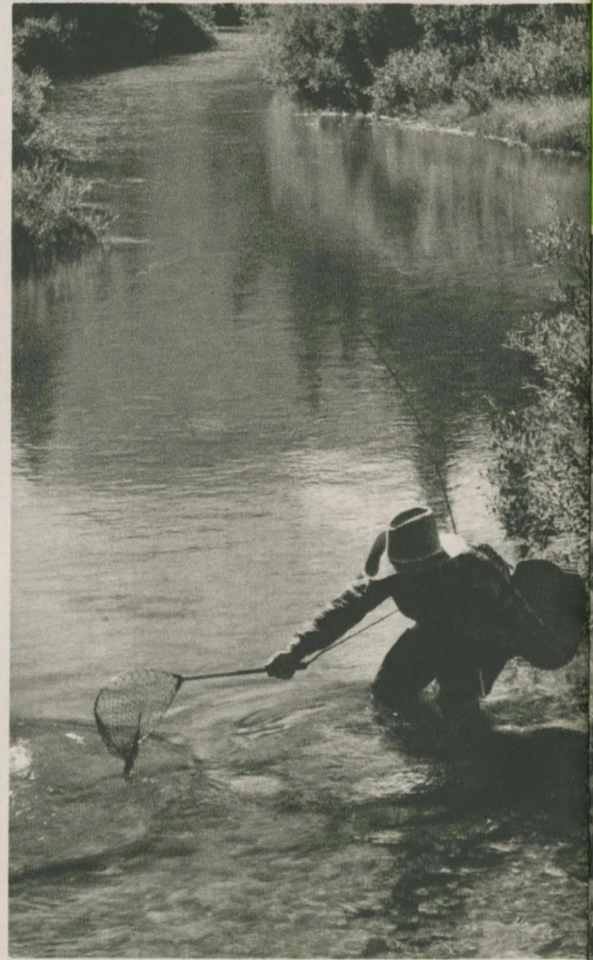
A creelful of beauties  
from a Glacier Park  
stream.



↑  
Trout fishing is good at Trick Falls.



Hold that line!



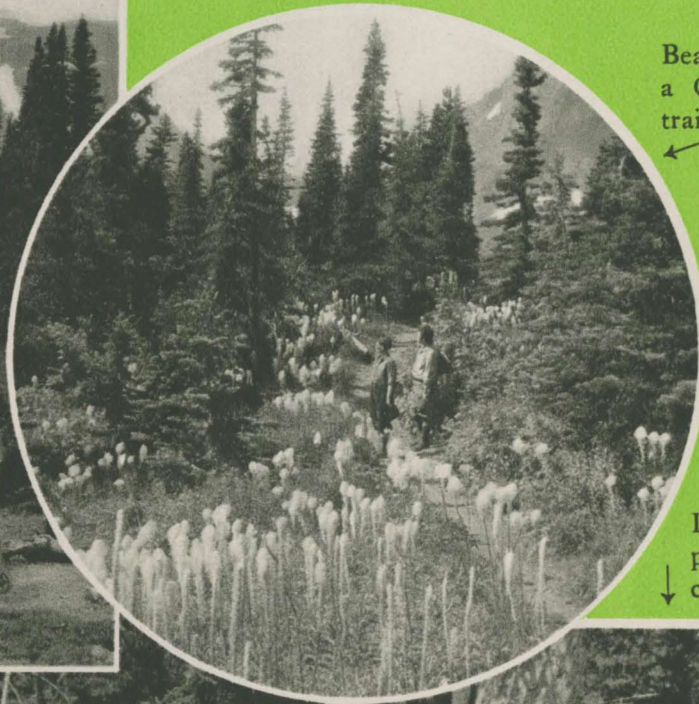
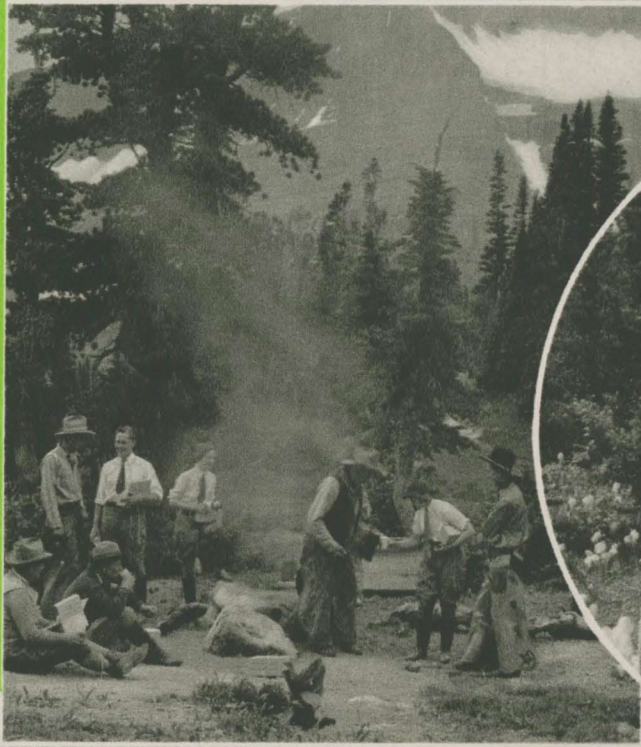
A valiant fight is nearly ended.

# Fishing

Grand for hot feet:  
hiking across a  
glacier →

# Hiking

Coffee for hungry  
hikers. ↓



Bear grass along  
a Glacier Park  
trail. ←

Deep in the  
pines on a Gla-  
cier Park trail. ↓





LOOK to the right, pardner, and what do you see? Glacier Park vacationers in boots and saddles on mountain-wise horses. In Montana's Land of the Shining Mountains are more than 1,000 miles of trails, and riding them on a steady steed behind a competent guide is a sure-fire way to escape workaday worries and revel in the glories of Glacier Park. Many combinations of saddle trips are available to vacationers. The most popular of these are listed below.

### Triangle Trip

AN impressive, three-day trail trek of 44 miles, starting from Many Glacier Hotel. In the morning up Swiftcurrent Valley, past Bullhead Lake and Red Rock Falls to the summit of Swiftcurrent Pass—7,176 feet. Granite Park Chalets overnight, and next morning southward along the Garden Wall to Logan Pass. Lunch on the trail, then down (and down) to the shores of St. Mary Lake and hospitable Going-to-the-Sun Chalets for the night.

The third day's trip, 18 miles, leads along the west side of famed Going-to-the-Sun mountain to Piegan Pass, along the shores of Josephine and Swiftcurrent Lakes to Many Glacier Hotel. This trip also may be started from Going-to-the-Sun Chalets.

### South Circle Trip

THIS is a five-day, 69-mile ride, which may be started from Many Glacier Hotel, Going-to-the-Sun Chalets or Lake McDonald Hotel.



Let's start from Going-to-the-Sun. Up we go to Piegan Pass to Many Glacier Hotel, 18 miles, for the night. Next morning we hit 9 miles of trail to Granite Park Chalets, where the stop is overnight. On the third morning we are on the trail for 19 miles to Lake McDonald Hotel through and over some of the most scenic sections of the park.

On the fourth morning up to Sperry Chalets and Glacier—9 thrilling miles. Time in the afternoon to explore the glacier and surrounding country, home of the Rocky Mountain goat. Overnight at Sperry chalets.

Up early next day for 16 stupendous miles through Lincoln Pass, then up again through Gunsight Pass; near the edge of Blackfoot Glacier (largest in the Park) and then to Going-to-the-Sun Chalets where the South circle started.

### North Circle Trip

NORTH this trip into the most rugged area of Glacier Park for five days and 66 miles if starting from Many

# Boots and Saddles on Glacier Trails

Glacier Hotel. (The trek also may be made from Going-to-the-Sun Chalets and Lake McDonald Hotel.)

The first day's ride is 9 miles to Granite Park Chalets. A healthy snooze, then up early the second day for an 11-mile jaunt along the timberline of the Continental Divide to West Flattop Mountain and Fifty Mountain Camp for the night. The third day's ride is 10 miles down into Waterton River valley to Goathaunt Camp, with Mount Cleveland, the park's highest peak, constantly in sight. Hit the hay early for the fourth day's ride is 18 magnificent miles past Indian Lake, over Indian Pass; Mount Kipp; the Belly River country; Glenn's Lake and Crossley Lake Camp deep in the heart of mountain timber. This is superb trout fishing country.

It's another 18 miles the fifth day, when the trail crosses and recrosses the Belly River; leads past Dawn Mist falls and Lake Elizabeth; up the windswept side of Ptarmigan Wall and through a tunnel to an eagle's-eye view of Ptarmigan Lake. You are thinking of dinner and blankets when Many Glacier Hotel is reached at twilight.

### Inside Trip

A FOUR-DAY, 62-mile trail ride which can be started at Two Medicine and Going-to-the-Sun Chalets or Many Glacier Hotel.

Northbound from beautiful Two Medicine the trail is over spectacular Cutbank Pass, past Lake of Seven Winds and Jonah's Bowl to Cutbank Chalets—a 16-mile trek. Overnight in the Chalets, then a 15-mile ride to Red Eagle Camp through the Cutbank valley, over Triple Divide pass (waters from Triple Divide peak flow to the Arctic, Atlantic and Pacific Oceans).

The third day's ride from Red Eagle Camp to Going-to-the-Sun Chalets is 13 miles of enchanting beauty along the shores of St. Mary Lake, one of the world's famed mountain lakes. The fourth and last day's ride is toward Many Glacier Hotel—18 miles through country of sensational grandeur.

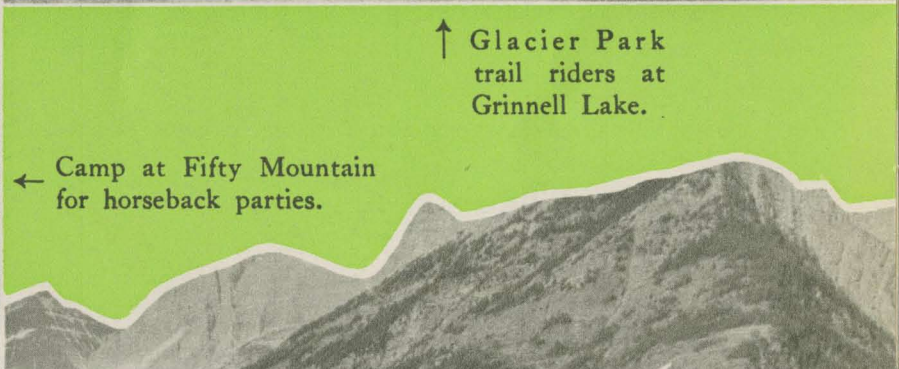
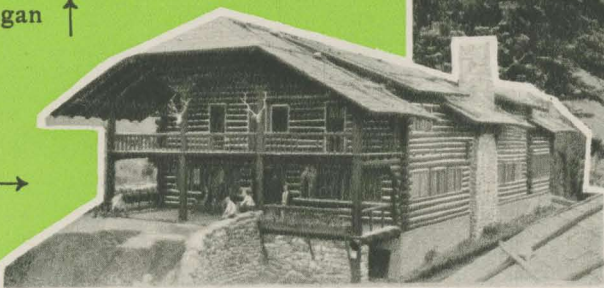




Riders on the Piegan Pass trail. ↑



Rendezvous of trail riders — St. Mary Chalet. →



↑ Glacier Park trail riders at Grinnell Lake.

← Camp at Fifty Mountain for horseback parties.



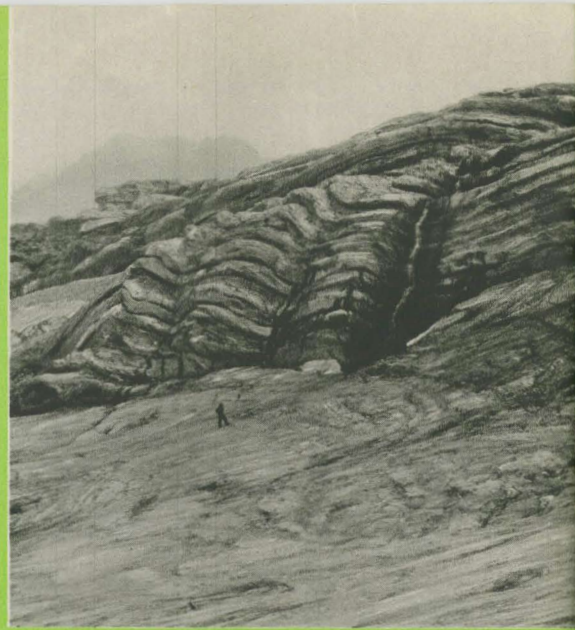
Ready for a day's ride at Crossley Lake.

# Geology

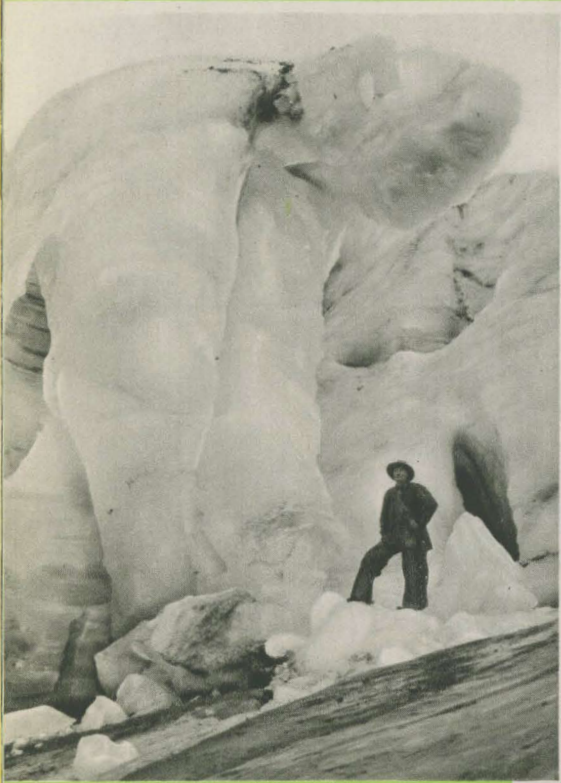
LONG before creation of Glacier National Park, this region was explored and partially developed by geologists, who found more of geologic interest than in any simi-

lar area on the continent. The processes of rock and valley formation and other changes in the surface of the earth caused by rain, wind, ice, pressure and other phenomena are clearly demonstrated. The celebrated Lewis overthrust fault which appears at Trick Falls, Swiftcurrent Falls, Chief Mountain is of great interest to scientists.

Other information about the Geology of this area may be found in the pamphlet on Glacier National Park, published by the National Park Service.



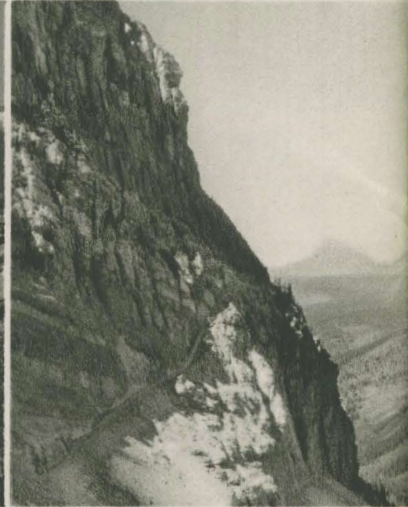
Sperry Glacier on the west side of Glacier Park.



↑  
Freakish ice formation on Blackfoot glacier, largest in Glacier Park.

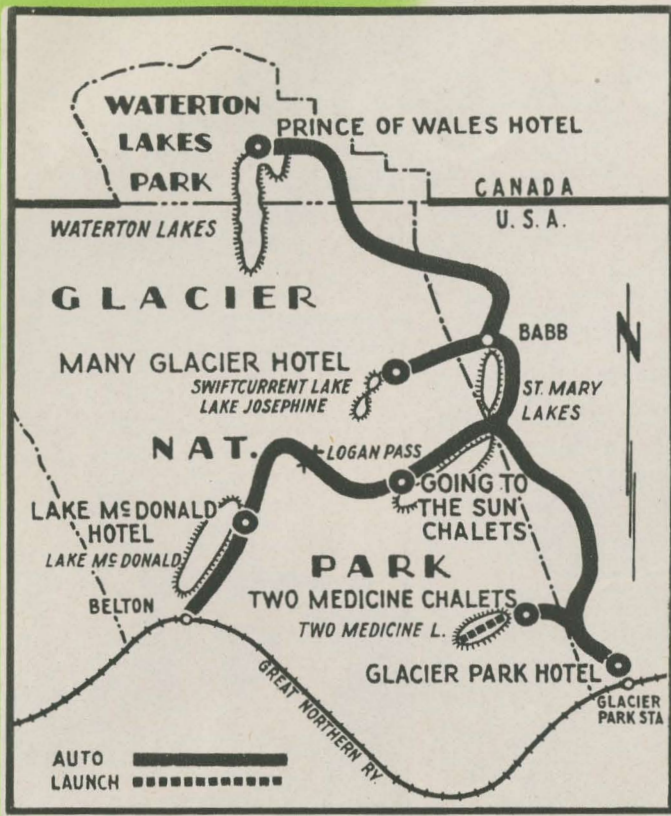
↓ Peculiar rock formations noted near Swiftcurrent falls and the mountain beyond.

↓ A trail clings to the mountain side.



Famed Chief Mountain, Glacier Park landmark and of geological importance.

# STOP-OFF TOURS



### 3 DAY TOUR

CERTAINLY, you are going to see Glacier National Park this summer—but, perhaps your time budget will not afford a complete vacation there.

And, that's why stop-off tours were born. They are all-expense treks for Empire Builder patrons with limited time and an over-whelming urge to meet glorious mountain country face-to-face.

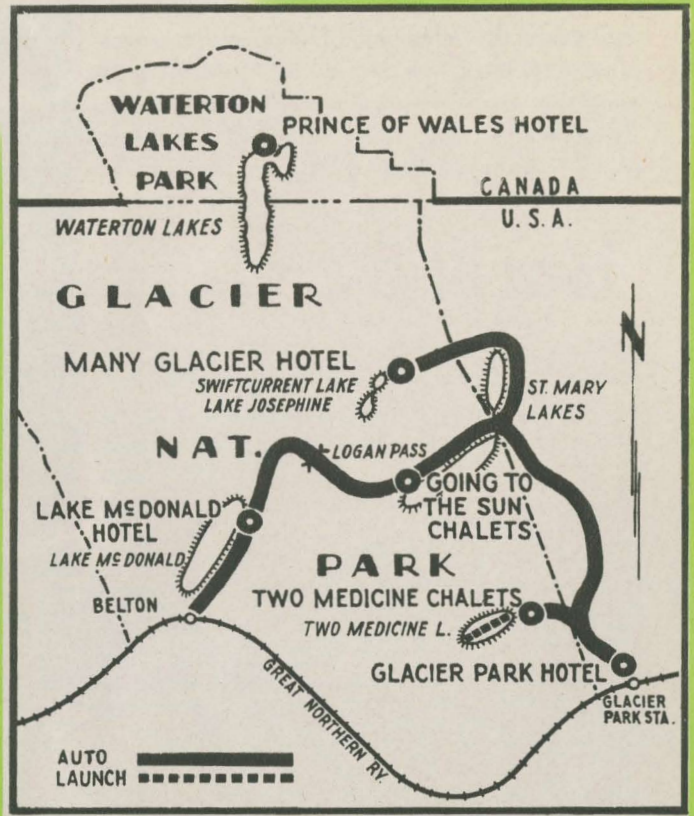
Stop-off tours in Glacier begin at either Glacier Park Station (eastern railway entrance) or Belton (western railway entrance) and cover from one to as many days as you may desire.

**TOUR No. 3** is a three-day trip through Glacier with an overnight visit to the Prince of Wales Hotel in Canada. (Note map of Tour No. 3.) The tour includes bus and launch transportation, nine meals and three nights' lodging.

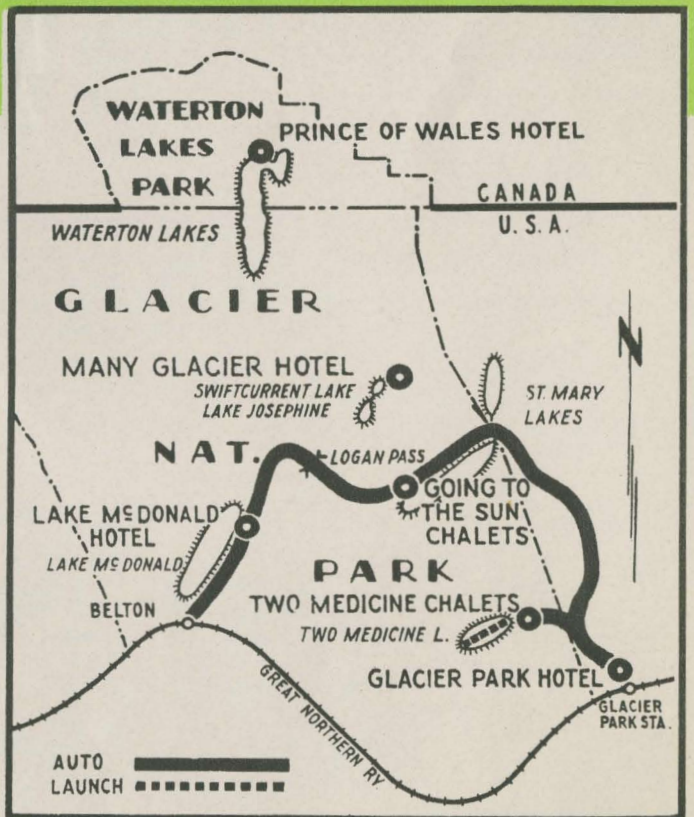
**TOUR No. 2** requires two days and covers only Glacier Park. (Note map of Tour No. 2.) Bus and launch transportation in addition to seven meals and two nights' lodging are included.

**TOUR No. 1** is a one-day trip, covering a small, but superbly scenic portion of Glacier Park. (Note map of Tour No. 1.) Four meals, one night's lodging, bus and launch transportation are included.

Any one of the stop-off tours may be stretched into a longer stay covering the same trips through Glacier and Waterton Lakes Parks as noted on the maps, but providing more leisure at hotels and chalets.



### 2 DAY TOUR



### 1 DAY TOUR

Complete information on Stop-off Tours available through A. J. Dickinson, Passenger Traffic Manager, Great Northern Railway, St. Paul, Minn., or see insert in this book.

# The Empire Builder

Air-conditioned



Empire Builder  
← lounge cars are big and comfortable.



Modern luxury coaches are year-around Empire Builder equipment. →



Empire Builder  
← food is the toast of travelers everywhere.

In a few hours they'll be dudes in Glacier Park. ↓



The Empire Builder ↑  
along the Flathead river,  
bordering Glacier Park.





# Information Please!

## The Clothing Question

THERE are no conventionalities in Glacier and Waterton Lakes parks—outing clothes are the rule, warm clothing is essential, an overcoat, a wool jacket or sweater is desirable for riding in the open buses, as it is generally cool in the mountains. For a week or two weeks' trip, either afoot or horseback, the following list is about all that is required:

- 1 Suit of warm outing clothes.
- 1 Pair riding breeches.
- 1 Sweater or wool jacket.
- 2 Suits of underwear, either heavy cotton or light-weight woolen.
- 3 Pairs of wool socks.
- 1 Rubber blanket or raincoat, if on walking tour.
- 1 Pair stout lace shoes or hiking shoes. Do not use hobnails or calks in shoes or boots except on hiking trips, they are not necessary, are dangerous if horseback riding and are not allowed in lobby or dining room of hotels.
- 1 Pair canvas leggings, puttees or golf stockings.
- 2 Pairs of cotton, wool or leather gloves.
- 1 Felt hat or cap.
- 1 Cloth dunnage bag or canvas knapsack.

Women should have either stout shoes or walking boots and knickers or riding breeches. All riding is western style—astride the saddle.

Do not wear low shoes or high heel shoes or thin silk stockings if riding or walking the trails.

Haversacks or cloth dunnage bags can be purchased at Park stores. Waterproof slickers are furnished free with all saddle horses. The slicker is always kept on the saddle ready for immediate use in case of rain. A pair of amber goggles is a good thing to protect one's eyes when on the glaciers or snow fields. The most comfortable footwear is heavy winter shoes or outing boots of soft leather. Wear heavy wool socks if doing much walking. If you cannot stand the wool next to the skin, use light-weight cotton socks and draw the wool ones over.

## Forwarding Address

MAIL for guests, except at Lake McDonald and Prince-of-Wales Hotels, should be addressed in care of Glacier Park Hotel Company, Glacier Park, Montana. If

addressee is in the interior of the Park and has left forwarding instructions, mail will be forwarded accordingly. Mail for guests at Lake McDonald Hotel should be addressed in care of the hotel, Lake McDonald P. O., Montana; for guests at Prince-of-Wales Hotel in care of the hotel, Waterton Park, Alberta, Canada.

## Telegraph and Telephone Service

THE same procedure for addressing telegrams should be followed as that outlined for mail service. Telegrams and telephone calls will be transmitted to tourists in the interior of the Park at regular telephone tariff rates.

## And, About Fishing!

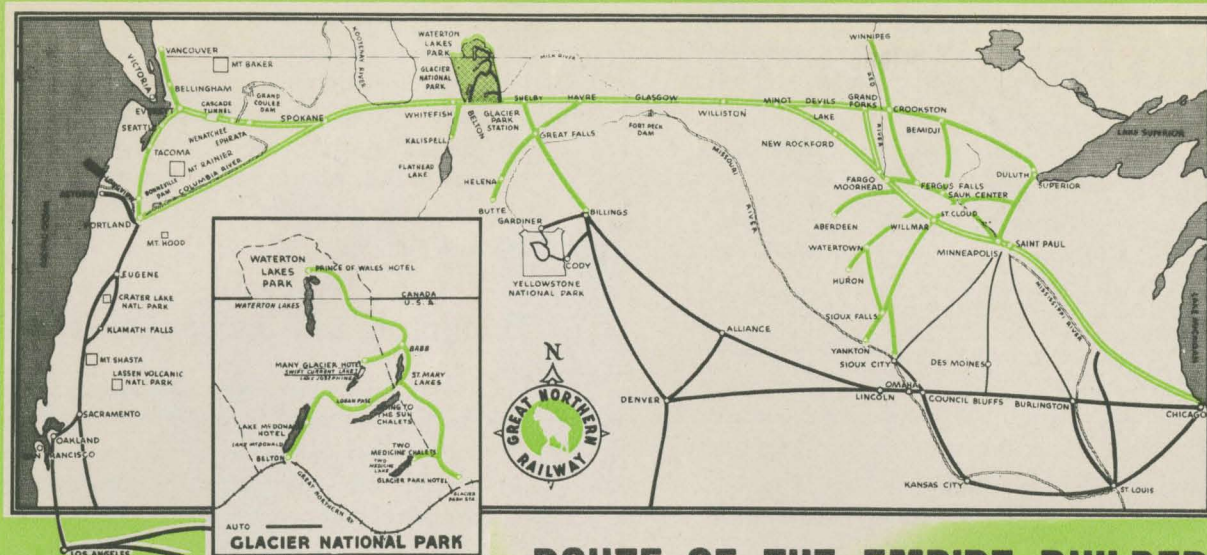
THAT depends on direction of the wind, heat of the sun and phase of the moon. Yes, really it does. For many of the streams in Glacier Park are fed by glaciers. The melting speed of the glaciers depends upon the sun and affects the speed and condition of the streams. It isn't so easy to explain why fish are more willing to snap at a fly when the wind is in one quarter or another, nor is it easy to say (truthfully) what the moon has to do with it. So let's rest with this answer: Usually you can fish almost anywhere in the park and enjoy good sport. Excellent catches are sometimes made within hailing distance of Two Medicine Chalets and Many Glacier Hotel, Red Eagle, Crossley and Goathaunt Camps. When you reach the park ask at the hotel or chalet where you stay, and they'll be able to give you up-to-the-minute information on fishing.

## Cost of Glacier Park Vacations

INFORMATION about the cost of all-expense tours, saddle-horse trips and rates for services of all kinds is contained in the enclosed insert, or in the folder—"A Pictorial Map of Glacier—Waterton Lakes International Peace Park"—published by the Great Northern Railway Company.

## Dude Ranches

AMONG America's finest dude ranches are those in the Montana area contiguous to Glacier National Park and territory served by the Great Northern Railway. Complete information is incorporated in a folder, Dude Ranches, published by the Great Northern.



## ROUTE OF THE EMPIRE BUILDER

**Write---Telegraph---Phone---or call in person on the Great Northern Railway Representative in any of these cities:**

He will advise you how to arrange your trip so as to include Glacier National Park—the highspot of any vacation trip. If it's a dude ranch vacation you're thinking of, take advantage of Great Northern's service and see Glacier Park in the bargain. Both the East and West entrances to the Park—Glacier Park Station and Belton, Montana—are on the Great Northern main line. When you travel between Chicago and the Pacific Northwest, take Great Northern's fine, air-conditioned transcontinental train, the EMPIRE BUILDER, which offers every luxury, every economy.

### EAST AND MIDWEST

BILLINGS, MONTANA—Phone 2249. 311 Electric Building.  
 BOSTON, MASSACHUSETTS—Phone Liberty 1639. 203 Walker Bldg.  
 BUFFALO, NEW YORK—Phone Wa 1020. 797 Ellicott Square.  
 BUTTE, MONTANA—Phone 3943. 513 Metals Bank Building.  
 CHICAGO, ILLINOIS—Phone Randolph 6700. 212 South Clark Street.  
 CINCINNATI, OHIO—Phone Main 0249. 1008 Traction Building.  
 CLEVELAND, OHIO—Phone Cherry 7137. 508 Hippodrome Bldg.  
 DES MOINES, IOWA—Phone 3-7025. 305 Equitable Building.  
 DETROIT, MICH.—Phone Randolph 8398. Lobby, Transportation Bldg.  
 DULUTH, MINNESOTA—Phone Melrose 118. 302 West Superior St.  
 FARGO, NORTH DAKOTA—Phone 1800. 702 Black Building.  
 GRAND FORKS, NORTH DAKOTA—Phone 67. Great Northern Station.  
 GREAT FALLS, MONTANA—Phone 5481. 802 First Natl. Bk. Bldg.  
 HELENA, MONTANA—Phone 2700. 415 First Nat. Bank & Trust Bldg.  
 KANSAS CITY, MISSOURI—Phone Victor 3852. 544 Railway Exch. Bldg.  
 MILWAUKEE, WISCONSIN—Phone Marquette 1753. 502 Majestic Bldg.  
 MINNEAPOLIS, MINNESOTA—Phone Atlantic 1267. 640 Marquette Ave.  
 MINOT, NORTH DAKOTA—Phone 1840. Great Northern Station.  
 NEW YORK, NEW YORK—Phone Volunteer 5-0144. 595 Fifth Avenue.  
 OMAHA, NEBRASKA—Phone At. 5622. 1412 First National Bk. Bldg.  
 PHILADELPHIA, PA.—Phone Rittenhouse 3275. 504 Finance Bldg.  
 PITTSBURGH, PA.—Phone Atlantic 1541. 602 Oliver Building.  
 ST. LOUIS, MISSOURI—Phone Garfield 2956. 520 Boatmen's Bk. Bldg.

ST. PAUL, MINNESOTA—Phone Garfield 5588. 4th and Minnesota Sts.  
 SIOUX CITY, IOWA—Phone 87581. 403 Commerce Building.  
 SIOUX FALLS, SOUTH DAKOTA—Phone 105. 503 East 8th Street.  
 SUPERIOR, WISCONSIN—Phone Broad 2800. Union Station.  
 TORONTO, ONTARIO—Phone Elgin 3992. 507 Royal Bank Building.  
 WASHINGTON, D. C.—Phone National 1345. 303 National Press Bldg.  
 WINNIPEG, MANITOBA—Phone 92974. 414 Main Street.

### PACIFIC NORTHWEST

BELLINGHAM, WASHINGTON—Phone 2111. 212 Kulshan Building.  
 EVERETT, WASHINGTON—Phone Main 840. Great Northern Station.  
 KLAMATH FALLS, OREGON—Phone 1400. Great Northern Station.  
 NELSON, BRITISH COLUMBIA—Phone 57. 387 Baker Street.  
 PORTLAND, OREGON—Phone 7273. 530 American Bank Building.  
 SEATTLE, WASHINGTON—Phone Seneca 0400. 1400 Fourth Avenue.  
 SPOKANE, WASHINGTON—Phone Main 5141. Davenport Hotel.  
 TACOMA, WASHINGTON—Phone Main 0113. 116 South Ninth Street.  
 VANCOUVER, B. C.—Phone Seymour 3386. 683 Granville Street.  
 VICTORIA, B. C.—Phone Empire 9823. 916 Government Street.  
 WENATCHEE, WASHINGTON—Phone 376. Great Northern Building.

### CALIFORNIA

LOS ANGELES—Phone Vandike 1201. 605 Central Building.  
 OAKLAND—Phone Templebar 7672. 611 Central Bank Building.  
 SACRAMENTO—Phone Capital 1822. 223 Forum Building.  
 SAN FRANCISCO—Phone Sutter 6051. 679 Market Street.

The Glacier Park Hotel Company operates, independently, all hotels, chalets, Swiftcurrent Cabins, and Launches on St. Mary and Waterton Lakes. The Canadian Rockies Hotel Company, Limited, operates, independently, the Prince of Wales Hotel at Waterton Lakes, Alberta, Canada.

All other facilities are operated by independent concessioners and the Great Northern Railway Company, The Glacier Park Hotel Company and the Canadian Rockies Hotel Company, Limited, in issuing and selling tickets for all services in Glacier National Park and Waterton Lakes Park, act only as agents for the parties or concessioners providing the services.

**A. J. DICKINSON, PASSENGER TRAFFIC MANAGER, ST. PAUL, MINNESOTA**

*Pictures in this book by: William S. Yale, T. J. Hileman, Channing Powell, National Park Service, Wide World Photos, R. F. Williams, John Kabel; Leica photos by Anton F. Baumann.*

# PHOTOGRAPHERS' PARADISE



JUST as a friendly tip, the National Park Service frowns on unofficial gun-toting in Glacier Park—but not a man in forest green uniform will put up a stop sign on shooting with a camera.

Chances are he will whip out his own camera and take you taking a picture in North America's paradise for photographers.

Wherever you walk or ride in Glacier Park, pictures pop up—and they are yours for the clicking. So varied are the subjects and compositions in the Land of the Shining Mountains that two pictures of the same scene never are twins.



Mother Nature is captious; her moods in clouds and sunlight on pastel-tinted mountains, on tumbling streams, lakes, waterfalls and meadows change constantly. So, everywhere in this enchanting Montana playground are pictures worth remembering on film.



Your impedimenta for a Glacier Park vacation need not include an expensive camera; for, many of the finest photographs ever taken in the park have been made with popular-priced equipment.

But, if you are a dyed-in-the-dark-room picture "bug," the proud owner of superfine equipment, so much the better. You never will have learned just what those magic gadgets will do until they click in Glacier Park.

Motion pictures? Color pictures? The most imaginative photographer could never fancy a picture paradise like this. There's unlimited action and 1,500 square miles of picture book color.



Write it down: Take your camera to Glacier National Park!

Upper right: Flying Higher, youngest Blackfeet chieftain, and Chief Weasel Feather; lower right: Bear Grass in early summer; left above: fishing below Two Medicine Falls.



**GLACIER NATIONAL PARK  
WATERTON LAKES PARK**