

# TAKE THE EMPIRE BUILDER-VIA GREAT NORTHERN RAILWAY-AND STOP OFF AT GLACIER NATIONAL PARK EN ROUTE TO ALASKA



## All Aboard the EMPIRE BUILDER

On your way to Alaska take the Great Northern Railway's completely air-conditioned EMPIRE BUILDER to Seattle, your port of departure. The EMPIRE BUILDER is Great Northern's most luxurious train. No convenience of modern travel has



DINING CAR

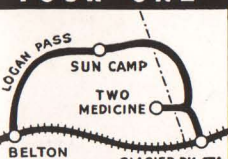
been overlooked. Not only drawing rooms, compartments, bedrooms, and Pullman berths at lower prices, but the club lounge, radio lounge, library, observation car, solarium and dining car leave nothing to be desired. Well trained attendants have charge of buffet, and barber shop, bath and valet service are always available. New type Luxury Day Coaches and Empire Builder tourist sleepers furnish air-conditioned comfort for those who wish to travel at lowest cost. There is no extra charge on the EMPIRE BUILDER. Delicious meals served in the dining car for as little as 50 cents.

<b>BOSTON</b> J. H. Kenney New England Passr. Agt. 203 Walker Bldg. 120 Boylston St.	<b>NEW YORK</b> M. M. Hubbert Gen. Eastern Passr. Agent 595 Fifth Ave. at 48th St.	<b>WASHINGTON</b> E. H. Whitlock Gen. Agt., Passr. Dept. 303 Nat'l Press Bldg. 14th and F Sts., N. W.	<b>PHILADELPHIA</b> A. E. Rohmer Dist. Passr. Agent 504 Finance Bldg.	<b>PITTSBURGH</b> P. H. Yorke General Agent 602 H. W. Oliver Bldg.	<b>CLEVELAND</b> F. L. Cobb Dist. Passr. Agt. 508 Hippodrome Bldg.	<b>CINCINNATI</b> V. J. Kenny General Agent 1008 Traction Bldg.	<b>DETROIT</b> H. G. Schuette Main Floor Lobby Transportation Bldg.	<b>CHICAGO</b> E. H. Moot Gen. Agt., Passr. Dept. 212 South Clark St.	<b>MILWAUKEE</b> B. C. Culbertson City Ticket Agent 502 Majestic Bldg.	<b>ST. PAUL</b> W. G. Mitsch City Ticket Agent Fourth St. at Minnesota	<b>MINNEAPOLIS</b> C. M. Cornelius Gen. Agt., Passr. Dept. 640 Marquette Ave.	<b>ST. LOUIS</b> Paul R. Shaw Traveling Passr. Agent 520 Boatmen's Bank Bldg.	<b>DES MOINES</b> O. W. Pierce Dist. Passr. Agt. 305 Equitable Bldg.	<b>KANSAS CITY</b> C. A. Rand Gen. Agt., Passr. Dept. 544 Railway Exch. Bldg.
--	---	---	--	---	---	--	--	--	---	---	--	--	---	--

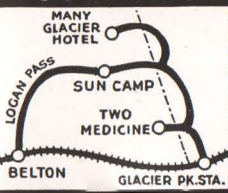
## Highspot of Alaska Trips

### STOP-OFF TOURS IN GLACIER NATIONAL PARK on Great Northern Railway Route of the Empire Builder

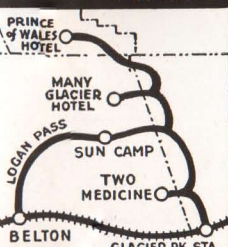
#### TOUR ONE



#### TOUR TWO



#### TOUR THREE



#### GLACIER PARK Stop-Off Tour Number 1

Hundreds of tourists whose time is limited take this glorious trip through Glacier Park in open-top observation buses. The tour leads through the heart of the Park, across the Great Divide over Logan Pass. It includes a boat trip on Two Medicine Lake. Tour includes night's lodging and delicious meals in splendid Park Hotels. Available either westbound or eastbound June 15 to September 15. All-expense rate \$17.00.

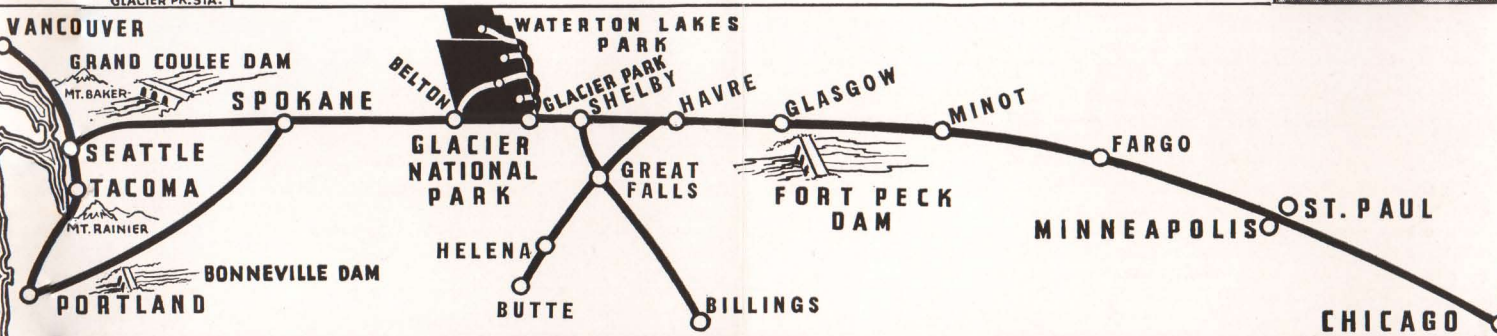
#### GLACIER PARK Stop-Off Tour Number 2

This tour goes farther North into Glacier Park and gives you a full day at the famous Many-Glacier Hotel. Here is spectacular scenery—nearby glaciers fringed by flowering alpine meadows, romantic forest trails for horseback or hiking. This tour also

includes open-top bus trip over Logan Pass via Going-to-the-Sun Highway, and boat trip on Two Medicine Lake. Available either westbound or eastbound June 15 to September 15. All-expense rate \$28.25.

#### GLACIER PARK Stop-Off Tour Number 3

This tour crosses the international boundary line into Canada and gives you a wonderful day in Waterton Lakes Park, with headquarters at Prince of Wales Hotel. It includes also a day in the region of Many-Glacier Hotel on Swift Current Lake in Glacier Park, and the spectacular sight-seeing open-top bus trip over Logan Pass via Going-to-the-Sun Highway; also the boat trip on Two Medicine Lake. Available either westbound or eastbound June 25 to September 7 only. All-expense rate \$42.50.



### THE ROUTE OF THE EMPIRE BUILDER—SMOOTH, LOW ALTITUDE, SCENIC, HISTORIC

#### WESTBOUND OR EASTBOUND

When you cross the Rocky Mountains do not fail to spend a day or longer in Glacier National Park. Glacier Park Station, the East gate of the Park, and Belton, the West gate, are both on the main line of the Great Northern Railway, which runs West from Chicago and the Twin Cities to Seattle, Tacoma and Portland. Glacier

Park Stop-Off Tours have been arranged to accommodate either Eastbound or Westbound Passengers. Any of the officials whose names appear on the bottom strip of this folder will gladly route your transportation via Great Northern with stop-off privilege. In fact, any railroad ticket agent anywhere will do it for you.



## LOW ROUND TRIP SUMMER EXCURSION FARES TO SEATTLE

Effective May 15, 1938

FROM	*First Class Round Trip Summer Excursion Fares	One-way Lower Standard Berth
Chicago	\$90.30	\$15.75
Milwaukee	89.10	15.75
St. Louis	85.60	15.00
Minneapolis	75.60	13.25
St. Paul	75.60	13.25
Omaha	75.60	13.25
via St. Paul	80.25	15.75
Kansas City	75.60	13.25
via St. Paul	80.25	15.00
Des Moines	80.25	14.25

\*Intermediate fare (tourist class) approximately one-fifth and coach fare one-fourth less than first-class fare.

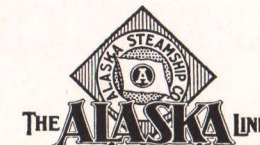
Proportionately low summer round trip fares will apply from other eastern and southern points, effective May 15.

Stopovers at Glacier National Park or at other points en route can easily be arranged.

For further information about railroad or steamship fares, reservations, side trip or hotel accommodations, address any one of the Great Northern representatives listed at the bottom of this folder or

MR. A. J. DICKINSON  
Passenger Traffic Manager  
Great Northern Railway  
St. Paul, Minnesota

Ride the Famous Empire Builder

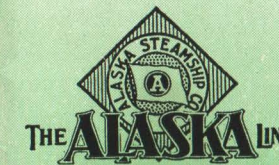


Via GREAT NORTHERN RAILWAY

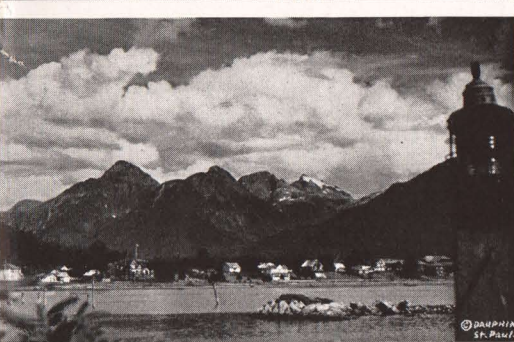
"The Glacier National Park Route"

PRINTED IN U.S.A. FRANK McCaffrey SEATTLE

1938 SEASON







Magic Mendenhall Glacier and Auk Lake

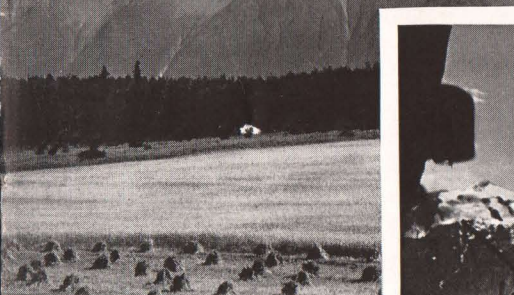
Typical Alaska port of romance



Approaching Columbia, mightiest of tide-water glaciers



Famous Matanuska Valley, under the Midnight Sun



Vacation-explorers off for adventure ashore



# ALASKA

# CRUISES

MAY THROUGH SEPTEMBER



## Strange ALASKA

Come—explore this nearby land of wonders, where summer comes early and stays late! Beneath Alaska's warm May-through-September sun, sail the world's longest protected ocean waterway, past peaks so tall they are forever crowned in snow, to the face of mighty roaring glaciers, into silent sunlit fjords, to towns where streets still whisper of the past when Russians ruled and men stampeded for gold. Stand face-to-face with the Indians' hand-carved family trees—weirdly designed, brightly colored totem poles.

Alaska is the most incredible of vacationlands. The strange charm of Alaska reaches out to you as soon as you head north from Seattle . . . it closes in as you sail the sheltered seas of the Inside Passage . . . it calls from the towering peaks of the Fairweather and St. Elias ranges as you cross the Gulf of Alaska . . . it nestles close again as you sail the blue waters of rugged Prince William Sound . . . it accompanies you as you travel inland to Matanuska Valley, Mount McKinley National Park, and the mighty Yukon River.

Days are filled with romance, adventure, rest and relaxation as you play rollicking deck games, lazily watch scenery-from-a-deck-chair, and make thrilling discoveries ashore with fellow vacation travelers. At night you dance to the ship's orchestra, or stroll the deck beneath the fantastic rays of Alaska's Midnight Sun.

### ALASKA'S VACATION SEASON

Contrary to general misinformation, Alaska's vacation season is not limited to one or two short months, but is at its height for five full months, from the very first day of May through September. It is suggested that you come early, if possible—May or June—and assure yourself best accommodations. The early season brings you the most pronounced sunlit nights . . . while later months bring the glorious Alaska moonlit nights.

All fares quoted are first-class, round-trip from Seattle, and include berth and meals aboard ship

## Short Cruises—Long Cruises

### "TOTEMLAND" AND "INSIDE PASSAGE" CRUISES

Suppose you choose one of the equally famous nine-day TOTEMLAND Cruises or eleven-day INSIDE PASSAGE CRUISES. Your route from Seattle and beautiful Puget Sound takes you northward along the Inside Passage, that practically unruffled ocean lane between islands and mountains, with scenery all the way. On these 2500-mile cruises you sail as far north as Skagway, still reminiscent of her rip-roaring boom days during the gold rush to the Klondike. Every one of THE ALASKA LINE'S Totemland and Inside Passage cruise steamers visits Sitka, that dreamy city, once capital of Russian America. These cruises bring you to all of Southeastern Alaska's port cities, nestled at the base of towering mountains . . . to picturesque villages replete with their grotesque totems . . . to the very face of jagged "living" Taku Glacier, where the ship's whistle blows in salute to bring down a thundering cascade of blue ice. Round trip fares are as low as \$95 from Seattle.

### "PRINCE WILLIAM SOUND" CRUISES

Cruising and visiting along the smooth Inside Passage, this twelve-day trip from Seattle takes you north to Ketchikan, Wrangell, Petersburg and Juneau, and then westward to call at Cordova, Copper Gateway to Alaska; quaint Valdez, literally built on a dead glacier; and Seward, that bustling all-year gateway to the Interior. Scenically, the Prince William Sound district beggars mere description, and the spectacle of Columbia, Alaska's mightiest glacier, in action will never leave your memory.

Combining the picturesque grandeur of Southeastern Alaska's Inside Passage, with the rugged natural splendor of Alaska's great Westward, the Prince William Sound Cruise is unquestionably the outstanding "all-water" Alaska vacation choice. Fares are as low as \$130 for these three thousand five hundred miles of adventure and romance in Alaska.

### "WESTWARD" CRUISES

These twelve-day cruises cover generally the same territory as Prince William Sound Cruises. Fares are as low as \$130 round trip from Seattle.

### SPECIAL "ARCTIC" CRUISE

Practically a month's vagabonding in Eskimoland—consult your Great Northern agent for details.

## Low Fares—Fair Weather

### "GOLDEN BELT LINE" TOURS

These popular tours of the Interior are aptly named, for they take you from The Alaska Line steamer at Cordova or Seward and lead northward to Fairbanks, center of Alaska's placer gold mining country. The scenic rail and highway routes embraced in Golden Belt Line Tours present thrilling sights along the Copper River, with its "hanging" glaciers . . . intimate beauty and native life along the historic Richardson Trail to the gold fields . . . the feeling of freedom while exploring the vast reaches of the national park guarded by eternally snow-clad Mt. McKinley, highest peak on the North American continent. On these cruise-tours you may readily visit the Government's famous Matanuska Valley colonization project. On this trip into the Interior you visit every port but one of the Prince William Sound Cruise. For these 19-day cruise-tours, fares as low as \$222.70, exclusive of hotels and meals ashore, except meals and lodging at Mt. McKinley Park and Chitina, which are included.

### "YUKON RIVER CIRCLE" TOURS

These 33, 35, and 36-day cruise-tours from Seattle take you up the Yukon River, above the Arctic Circle, and through the storied Klondike region. Included are the Prince William Sound Cruise to Seward, rail to Mt. McKinley Park, Fairbanks and Nenana, river steamer through Dawson to Whitehorse, and by rail down the famous "Trail of '98", to join The Alaska Line steamer at Skagway for Seattle. Include side trip to West Taku Arm. In the reverse direction (downstream) the trips take 20, 23 and 30 days round trip from Seattle. Fares start at \$307.70, exclusive of hotels and meals ashore, except meals and lodging at Mount McKinley Park, which are included.

### "COPPER RIVER—KEYSTONE CANYON" TOURS

Leaving the northbound Prince William Sound Cruise steamer at Valdez, you go by automobile through deep-walled Keystone Canyon to Upper Tonsina and Chitina. Here you take the Copper River & Northwestern Railway, along the Copper River, past Miles and Childs Glaciers, to Cordova, to connect with the same steamer southbound. Fares for this 12-day round trip are as low as \$157 from Seattle, exclusive of hotels and meals ashore, except at Chitina, which are included.

Sailings two, three and four times weekly during Alaska's extensive vacation season

## Modern RAIL—STEAMER Service

Modern American rail and steamship lines have combined to place an enchanting Alaska vacation easily within your reach, both as to your budget and your time. The fast, safe service for which American railroads are famous throughout the world brings nearby Alaska even closer! Your fascinating vacation begins the moment you step aboard the luxurious, completely air-conditioned Empire Builder, famous train of the Great Northern Railway, to enjoy a grandstand seat on the scenic route to Seattle!

From Seattle your All-American steamer turns her bow north along the world's longest protected ocean waterway, where romance lingers in every port, where mystery lurks in every fjord. Aboard The Alaska Line ship you enjoy every moment, sailing sheltered seas. Two days out from Seattle you are in Alaska waters.

Both rail and steamer fares are attractively low. Aboard ship, fares are all-inclusive, covering your transportation, berth and meals. Because Alaska is a United States territory—America's last great frontier—you are saved the inconvenience of passports and customs. The Alaska Steamship Company offers the widest choice of cruises—from nine to thirty-six days, round trip from Seattle.

Plan now for a smooth "air-cooled" vacation by rail and steamer—all the way! Ask any Great Northern representative for colorful and fully descriptive Alaska Steamship Company cruise literature.

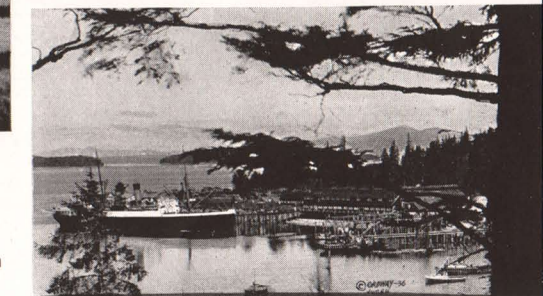
### SIDE TRIPS AND STOPOVERS

There are a number of interesting and inexpensive Alaska side trips available to The Alaska Line's passengers. Many of these may be made to connect with following steamers of The Alaska Line. Stopovers may be made at any port at no extra fare. Everything has been planned to make your Alaska vacation a happy and unforgettable experience.

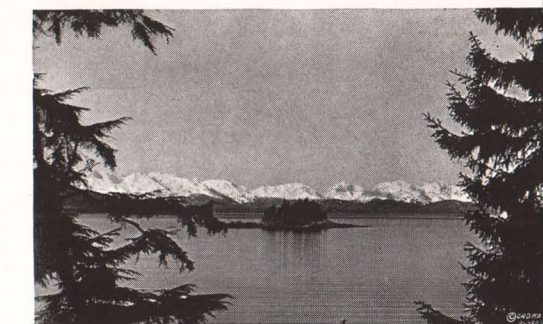


In Totemland

A fascinating Alaska "Surprise Port"



The glistening peaks of Alaska's Sheltered Seas



Grandeur that is Alaska's; majestic Mt. McKinley



Bells of czarist Russia lend enchantment to historic Sitka

