



Roomy upper berths invite sound, restful sleep.

EMPIRE BUILDER TOURIST SLEEPING CARS

The Great Northern policy of offering the utmost in comfort and economy within the budget range of travelers is once again demonstrated by its superb Tourist Sleeping Car equipment.

Tourist sleeping car berths are full length and width. They are completely equipped with thick, spring mattresses; light, warm blankets; clean, snow-white sheets and pillow cases; and soft, downy pillows. Complete rest and sound sleep are further assured because the car is air-conditioned.

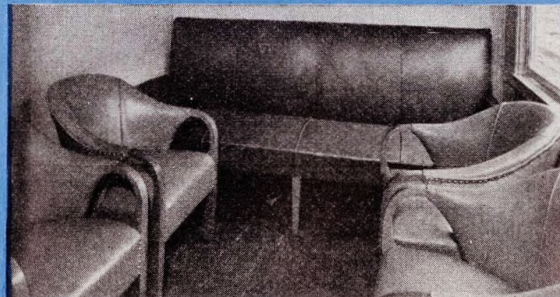
EACH TOURIST SLEEPING CAR offers spacious, completely equipped washrooms for men and for women, and a roomy smoking compartment for men.

GREAT NORTHERN DINING CAR SERVICE—famous for its complete Fifty-Cent meals—is available to Coach and Tourist Sleeping Car passengers. Sandwiches, pie, hot coffee, fruit, ice cream, etc., may also be obtained from train attendants, served at your seat.

Seats are adjustable to suit individual comfort.



There's a clubby air about the Men's Smoking Room.



Scenic Route TO AND FROM THE PACIFIC NORTHWEST

between

CHICAGO • ST. PAUL • MINNEAPOLIS •
GLACIER NATIONAL PARK • SPOKANE •
SEATTLE • TACOMA • PORTLAND •
VANCOUVER and VICTORIA, B. C., with
connections for CALIFORNIA • ALASKA.

TRAVEL on the Empire Builder offers every comfort, every economy . . . and every opportunity to enjoy the scenic beauty of America's most popular transcontinental route. In addition to the deft, courteous service—the luxury of air-conditioned cars featuring the latest of modern travel refinements, and the satisfaction of famous Great Northern meals for as little as fifty cents—The Empire Builder Route also offers 1600 clean, cinderless miles behind giant electric and oil-burning locomotives, 60 scenic miles of it along the border of Glacier National Park and 300 miles of spectacular beauty through the Rocky and the Cascade Mountains. Direct connections at Seattle, Wash., or Portland, Ore., for California points by ship or train—and for Alaska or Hawaii by steamship—is another convenience travelers appreciate.

TRAVEL
GREAT
NORTHERN



SAFETY
COMFORT
ECONOMY

PRINTED IN U. S. A. 11-37 6007

NEW TRAVEL COMFORT and ECONOMY in New Ultra Modern AIR · CONDITIONED COACHES



Featured on the Famous
EMPIRE BUILDER
LOWEST TRAVEL COST



Note the wide aisle, ample leg room between seats, and the high quality of all appointments.

You'll Like the Riding Comfort...the Low Travel Cost

WHEN you sum up the many travel comforts of this new ultra-modern coach—and add the low coach fares via Great Northern—you will be convinced that no other mode of travel even approaches it for luxury and economy. In the first place, the new coach seats 58 passengers—although large enough to accommodate 78 persons—thus providing more leg room and aisle space.

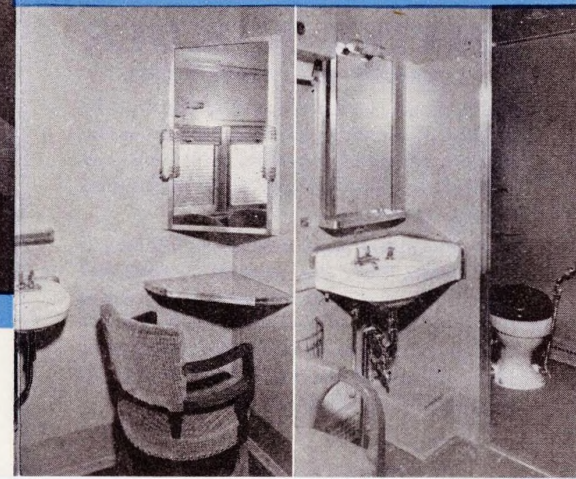
The individual chair-type, two-place seats turn on a swivel, and each passenger may adjust his seat for reading—tilt it back for resting—or recline it for sleeping without disturbing others. Made of molded sponge rubber—no springs—and richly upholstered in corded fabrics, the seats are exceptionally comfortable.

The coach is attractively decorated in light French green and ivory, satin finish aluminum hardware, colorful window shades. An electric water cooler is another modern feature. The Ladies' Lounge is larger—smartly modernized with diffused lighting, mirror and vanity table, large dressing mirror, complete toilet facilities, and individual upholstered chairs. The smoking compartment for men is also roomy and is furnished with comfortable leather chairs.



The Ladies' Lounge is as inviting as a boudoir.

Toilet facilities are modern, attractive, complete.



You'll Like the Luxury of Air-Conditioning

TRULY, you are "traveling in style" when you ride in the new ultra-modern Great Northern coaches. They are specially designed to afford all the essential comfort features of travel and are furnished and decorated luxuriously as well.

The new ultra-modern coaches are mechanically air-conditioned—which means scientifically accurate heating for the fall, winter, and spring months, as well as proper cooling for the summer. Fresh air is inducted, filtered, heated or cooled, then humidified or de-humidified to the proper relative degree to afford the most comfortable and healthful inside air at all times. Center ceiling air ducts carry off the used air continuously, thus affording healthful ventilation. The ceiling serves as a reflector for restful indirect lighting. To accommodate passengers who desire to read or play cards, there is an individually controlled light at each seat.

Sandwiches, pie, hot coffee, fruit, ice cream, etc., are served in coaches and tourist sleeping cars by train attendants. Prices are extremely low—the service prompt.