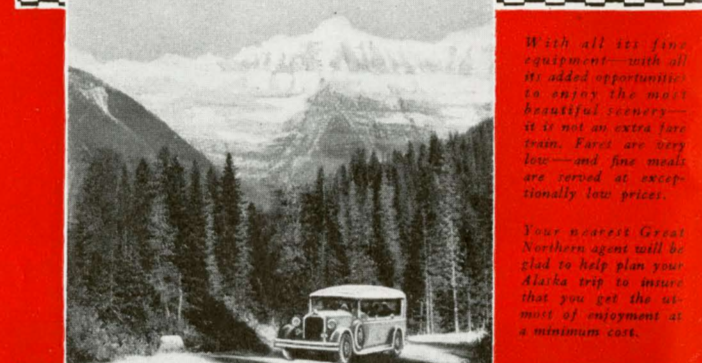
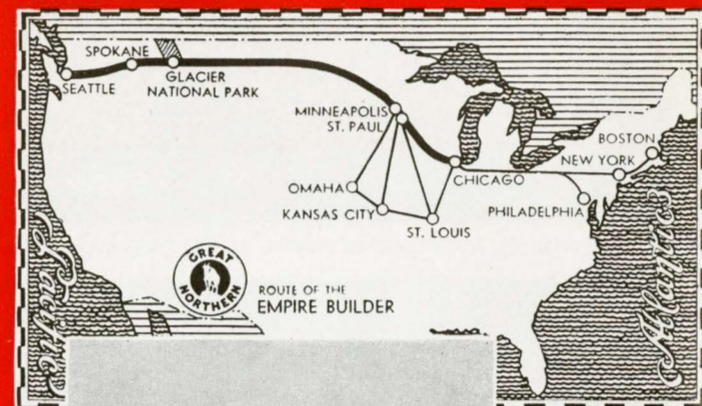


On your **Alaska** trip, be sure to include



# Glacier NATIONAL PARK

An additional travel thrill is yours when you go to Seattle, en route to Alaska, aboard the Empire Builder, crack transcontinental flyer of the Great Northern Railway. You follow the southern boundary of Glacier National Park for its entire distance—many glorious daylight miles of unsurpassed scenic beauty. You ride in supreme comfort along sparkling river valleys and lake shores through evergreen mountains, crossing the Continental Divide in the Rockies at Marias Pass.

The Empire Builder gives you the utmost in travel luxury all the way, with its air-conditioned cars and superb equipment. You will find a solarium lounge, library, radio lounge, smoking rooms, buffet, baths, barber, valet—everything to make travel comfort complete. Riding is smooth and clean on the Empire Builder—it is powered by electric and oil-burning locomotives for 1600 miles.

## Going-to-the-Sun Highway LOGAN • PASS • DETOUR

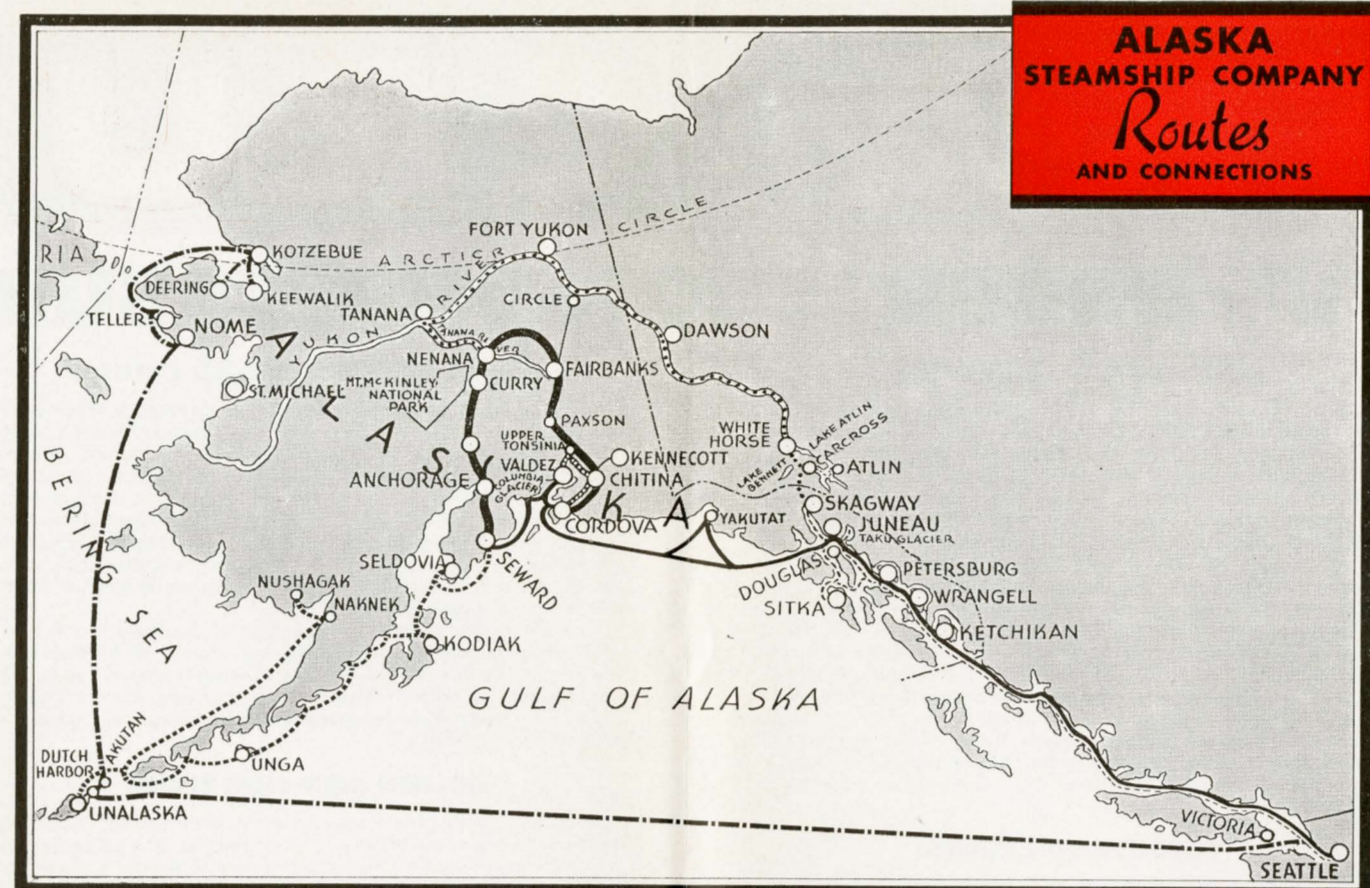
It only requires 26 hours longer to take a trip through the heart of Glacier Park, with its living glaciers and ice-blue lakes . . . this matchless trip takes you over the famed Logan Pass Detour on the recently completed Going-to-the-Sun Highway.

The Empire Builder takes you to the very gateway of Glacier Park—an exclusive Great Northern feature.

You get more for your money when you ride the Empire Builder.

**GO GREAT NORTHERN** *Ride the famous*  
*to Seattle* **"EMPIRE BUILDER"**

- |   |  |   |  |  |   |  |   |   |   |   |  |  |   |
|---|--|---|--|--|---|--|---|---|---|---|--|--|---|
| <b>BOSTON</b><br>J. H. Kenney<br>New England Pass. Agt.<br>203 Walker Bldg.<br>120 Boylston St. | <b>NEW YORK</b><br>M. M. Hubbert<br>Gen. Eastern Pass. Agent<br>595-5th Ave. at 48th St. | <b>PHILADELPHIA</b><br>E. H. Whitlock<br>Dist. Pass. Agent<br>504 Finance Bldg. | <b>PITTSBURGH</b><br>P. H. Yorke<br>General Agt.<br>602 H. W. Oliver Bldg. | <b>CLEVELAND</b><br>F. L. Cobb<br>Dist. Pass. Agt.<br>508 Hippodrome Bldg. | <b>CINCINNATI</b><br>J. H. Brinkman<br>General Agt.<br>608 Traction Bldg. | <b>DETROIT</b><br>H. G. Schuette<br>General Agt.<br>Main Floor Lobby<br>Transportation Bldg. | <b>CHICAGO</b><br>E. H. Moot<br>Gen. Agt., Pass. Dept.<br>212 So. Clark St. | <b>MILWAUKEE</b><br>B. C. Culbertson<br>General Agent<br>502 Majestic Bldg. | <b>ST. PAUL</b><br>W. G. Mitsch<br>City Ticket Agent<br>Fourth St. at Minnesota | <b>MINNEAPOLIS</b><br>C. M. Cornelius<br>Gen. Agt., Pass. Dept.<br>640 Marquette Ave. | <b>ST. LOUIS</b><br>J. M. Sanford<br>General Agent<br>520 Boatmen's Bank Bldg. | <b>DES MOINES</b><br>A. E. Rohmer<br>Dist. Pass. Agt.<br>305 Equitable Bldg. | <b>KANSAS CITY</b><br>C. A. Rand<br>Gen. Agt., Pass. Dept.<br>544 Railway Exch. Bldg. |
|---|--|---|--|--|---|--|---|---|---|---|--|--|---|



**ALASKA STEAMSHIP COMPANY**  
*Routes AND CONNECTIONS*



- LEGEND**
- ALASKA STEAMSHIP COMPANY—PRINCE WILLIAM SOUND CRUISE
  - ALASKA STEAMSHIP COMPANY—INSIDE PASSAGE CRUISE
  - GOLDEN BELT LINE TOUR
  - COPPER RIVER-KEYSTONE CANYON TOUR
  - YUKON RIVER CIRCLE TOUR
  - ALASKA STEAMSHIP COMPANY—BERING SEA ROUTE
  - ALASKA PENINSULA ROUTE—CONNECTING STEAMSHIP LINE



## GREAT NORTHERN GIVES MORE FOR YOUR MONEY

Great Northern Railway offers very low round-trip summer excursion fares to Seattle, effective May 15, 1936.

FROM	*First Class Round Trip Summer Excursion Rail Fares	One-way Lower Standard Berth
Chicago	\$86.00	\$15.75
Milwaukee	84.85	15.75
St. Louis	81.50	15.00
Minneapolis	72.00	13.25
St. Paul	72.00	13.25
Omaha	72.00	13.25
via St. Paul	77.65	15.75
Kansas City	72.00	13.25
via St. Paul	77.65	15.00
Des Moines	77.65	14.25

\*Intermediate fares (tourist class) average one-fifth and coach fares one-third less than first-class fares.

Proportionately low summer round-trip fares will apply from other eastern and southern points, effective May 15.

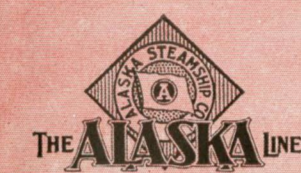
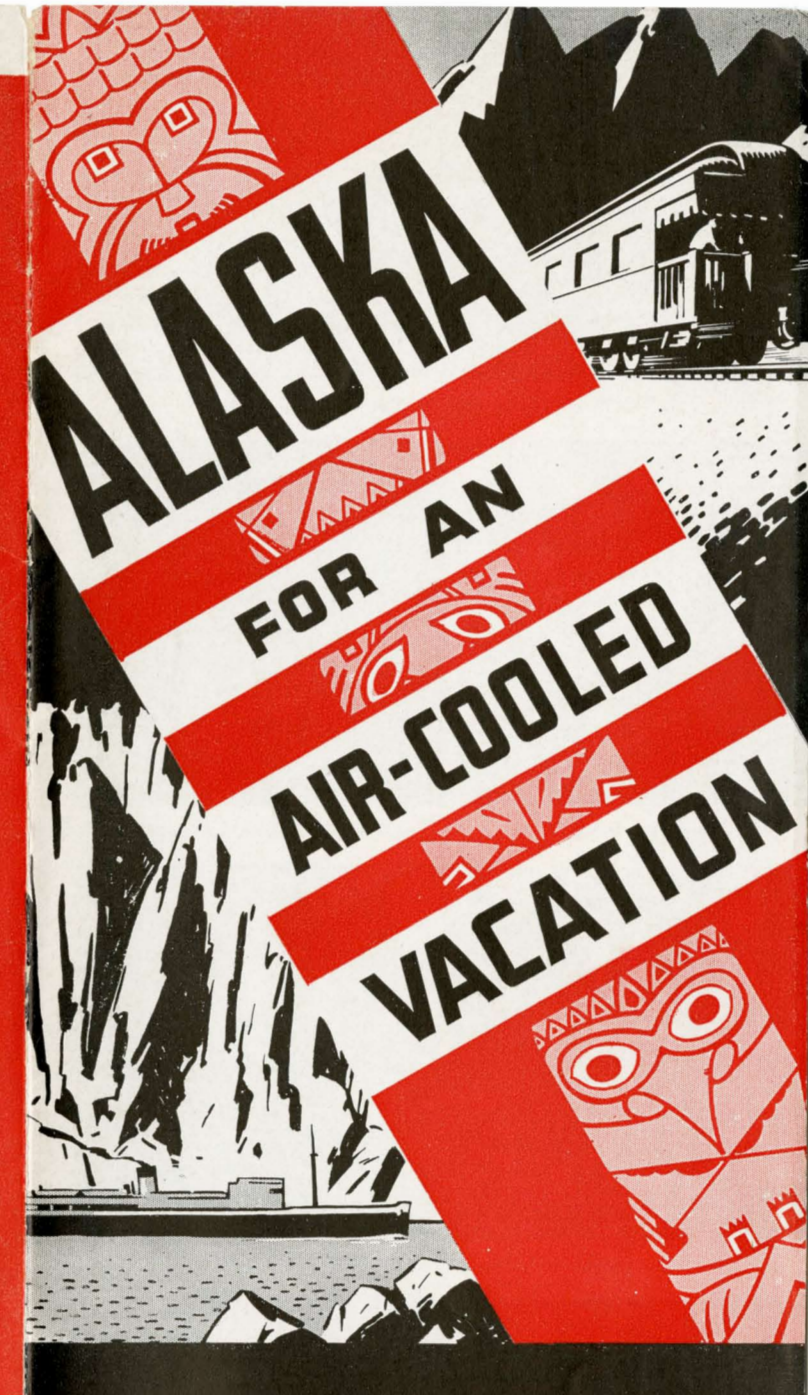
Stopover at Glacier National Park and other points may be easily arranged.

Go Great Northern. It gives more for your money—air-conditioned cars, fine meals at low prices, low fares, choice of 3 classes of tickets—no extra fare on the crack Empire Builder.

**Ride the Famous Empire Builder**



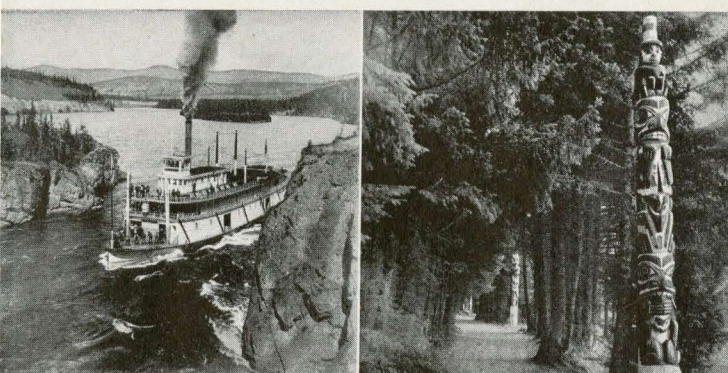
Via **GREAT NORTHERN RAILWAY**  
"The Glacier National Park Route"





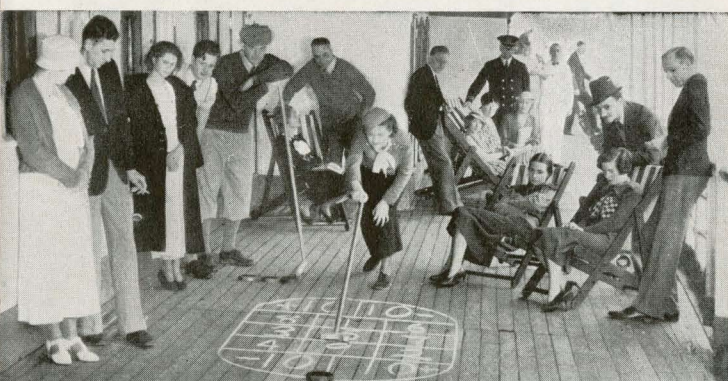


Only The Alaska Line visits mighty Columbia Glacier



Along the Yukon

Totem-lined Lovers' Lane, at Sitka



Congenial shipmates gather on The Alaska Line



Mt. Edgecumbe, replica of Fujiyama, rises near Sitka

## A Smooth Vacation



You'll like Alaska—*All* Alaska! You'll revel in the glamorous scenery—you'll enjoy the all-too-short days and sunlit nights cruising along mountain-protected lanes of glassy water. You'll spend happy hours with your fellow travelers in exhilarating deck games and "exploring" the many picturesque Alaska towns. Probably no

other corner of the earth is so richly endowed with such contrasting, natural phenomena . . . nor any other vacation so crammed full of thrills.

Just forty-eight hours from Seattle, Alaska certainly is not a far-away land of inhospitable polar blasts. Alaska's summer vacation climate is ideal. Her summer days are a pleasant escape from summer's intense heat, and her nights are delightfully cool.

But you must see Alaska to know her magic—magic of snow-topped mountains . . . flowered lands . . . green valleys . . . mighty blue glaciers . . . native atmosphere and weird totems . . . fascinating historic ports of call where interesting hours are spent wandering along streets once filled with gold-frenzied people, others once graced by Russian ladies clad in precious Alaska furs. These give to Alaska an allure not to be surpassed by any other lovely section of the globe. And when you return from this adventurous vacation, the memories of all you have seen will thrill you again and again—for the spell of the Midnight Sun will always belong to you!

### SIDE TRIPS AND STOPOVERS

There are a number of interesting and inexpensive Alaska side trips available to The Alaska Line's passengers. Many of these may be made while the steamer is in port. Others, such as short trips into the interior, may be made to connect with following steamers of The Alaska Line. Stopovers may be made at any port at no extra fare. Everything has been planned to make your Alaska vacation a happy and unforgettable experience.

## "UP-UNDER" THE MIDNIGHT SUN

### INSIDE PASSAGE CRUISES

Whatever your selection of these Alaska cruises, your route from Seattle and beautiful Puget Sound takes you northward along the Inside Passage, that practically unruffled ocean lane between islands and mountains, with scenery all the way. On this 2500-mile "Inside Passage Cruise" you will sail as far north as Skagway, still reminiscent with the evidences of her rip-roaring boom days during the gold rush to the Klondike. Every "Inside Passage Cruise" steamer of The Alaska Line visits Sitka, that dreamy capital of Russian America, where totem-lined "Lovers' Lane" and her magnetic natural setting compete for your interest with her historic Greek Orthodox Church of St. Michael, her block-house, grim reminder of native warfare, her thrilling past under rule of Baranof, "Little Czar of the Pacific." This cruise will bring you to Alaska's port towns, nestled at the base of towering mountains . . . to picturesque villages replete with their grotesque totems . . . to the very face of jagged "living" Taku Glacier, that answers your ship's whistle with a thundering cascade of blue ice. This cruise is scheduled for eleven days, and may be made for as little as \$90.

### TOTEMLAND CRUISES

This itinerary covers identically the same territory as does the "Inside Passage Cruise." Totemland Cruises make it possible to enjoy an Alaska vacation in extremely limited time—within the confines of a two-weeks period from most points in the States. Aboard a larger, faster express steamer of The Alaska Line, the schedule calls for nine, instead of eleven days. Even with this express service, a number of accommodations are offered at \$90, others at \$95 and \$105.

### COPPER RIVER—KEYSTONE CANYON TOURS

Leaving the Prince William Sound Cruise steamer, a short trip by rail from Cordova takes you over the Copper River & Northwestern Railway (the "Iron Trail" of history and fiction) along the Copper River, returning by automobile through deep-walled Keystone Canyon to Valdez, where you again board the same steamer. This trip is also made in the reverse direction, entering at Valdez and boarding your steamer at Cordova. Fares for this 12-day trip are as low as \$165.50, with some shore expenses included.

### SPECIAL ARCTIC CRUISE

Practically a month's vagabonding in Eskimoland—limited membership—consult your rail line agent for details.

**All fares quoted are first-class, round-trip from Seattle, and include berth and meals aboard ship. Sailings two and three times weekly during Alaska's extensive vacation season**

### PRINCE WILLIAM SOUND CRUISES

Cruising and visiting along the smooth Inside Passage, this twelve-day trip from Seattle takes you north to Juneau, Alaska's capital and home of the world's largest gold mill. Westward with the snow-clad Fairweather and St. Elias mountain ranges majestically guarding the nearby coastline, you call at Cordova, Copper Gateway to Alaska; quaint Valdez, literally built on a dead glacier; and Seward, that bustling all-year gateway to the Interior. Scenically, the Prince William Sound district beggars mere description, and the spectacle of Columbia, Alaska's mightiest glacier in action, will never leave your memory.

Combining the picturesque grandeur of Southeastern Alaska's Inside Passage, with the rugged natural splendor of Alaska's great Westward, the Prince William Sound Cruise is unquestionably the outstanding "all-water" Alaska vacation choice. Fares are as low as \$125 for these three thousand five hundred miles of adventure and romance in Alaska.

### GOLDEN BELT LINE TOURS

This popular tour of the Interior is most aptly named, for it takes the traveler from The Alaska Line steamer at Seward or Cordova and leads northward to Fairbanks, center of Alaska's placer gold mining country. The scenic rail and highway routes embraced in the Golden Belt Line Tour present thrilling sights along the Copper River, with its "hanging" glaciers . . . intimate beauty and native life along the historic Richardson Trail to the gold fields . . . the feeling of freedom while exploring the vast reaches of the national park guarded by eternally snow-clad Mt. McKinley, highest peak on the North American continent. It is on this cruise-tour that you may visit the Government's famous Matanuska Valley colonization project. You sacrifice no bit of coastline beauty on this trip into the Interior, for you visit every port, see every sight on the Prince William Sound Cruise, too. For this 19-day cruise-tour, fares are as low as \$222.70, exclusive of hotels and meals ashore.

### YUKON RIVER CIRCLE TOURS

This 35-day cruise-tour from Seattle takes you up the Yukon River, above the Arctic Circle, and through the storied Klondike region. Included are the Prince William Sound Cruise to Seward, rail to McKinley Park, Fairbanks and Nenana, river steamer through Dawson to Whitehorse, and by rail down the famous "Trail of '98," to join The Alaska Line steamer at Skagway for the Seattle-bound trip through the Inside Passage. In the reverse direction (downstream on the swift-moving Yukon) the trip takes 23 days, round trip from Seattle. Fares for the Yukon River Circle Tour are as low as \$316.70, exclusive of hotels and meals ashore.

## To a Land of Magic Moods

Modern American rail and steamship services combine to make your Alaska vacation a reality—pleasantly and economically. Travel on the Empire Builder, famous completely air-conditioned train of the Great Northern Railway, to Seattle, in the heart of the evergreen Pacific Northwest. Northward from Seattle your course finds you aboard friendly ships of The Alaska Line, threading your way along the calm and fjord-like Inside Passage—resting and playing in the invigorating salt air, visiting ashore at Alaska ports *en route*!

You can't afford to miss seeing Alaska this year—rail fares were never more attractive, and aboard ship the fastidiously prepared meals and your comfortable berth are included in the surprisingly low rate. There is no aggravating dollar-depreciation, no inconvenience of passports and visas.

American travel routes—by rail and steamer via Seattle, afford wide choice of routes, and more stops at interesting ports. On The Alaska Line—"surprise ports" not shown on regular itineraries, are visited, and while your ship is receiving or discharging cargo, you have an opportunity to "explore" and enjoy the characteristic charm of the truly "out-of-the-way" settlements.

Ask any Great Northern Railway representative for more descriptive Alaska Steamship Company cruise literature—plan for a smooth, "air-cooled" vacation this year.

### ALASKA'S VACATION SEASON

Contrary to general misinformation, Alaska's vacation season is not limited to one or two short months, but is at its height for five full months from May to September. If you come early, May, June, and early July bring you the most pronounced sunlit nights . . . while later July and August bring you the glorious Alaska moonlit nights. Somewhat lower fares are offered prior to June 1.



Majestic Mt. McKinley, reached by The Alaska Railroad



Son of the Midnight Sun

Finest foods—fastidiously prepared



Sightseeing at night—where the sun works overtime



The Alaska Line's ocean trail through mountains