

to the evergreen

**PACIFIC
NORTHWEST *and*
CALIFORNIA**



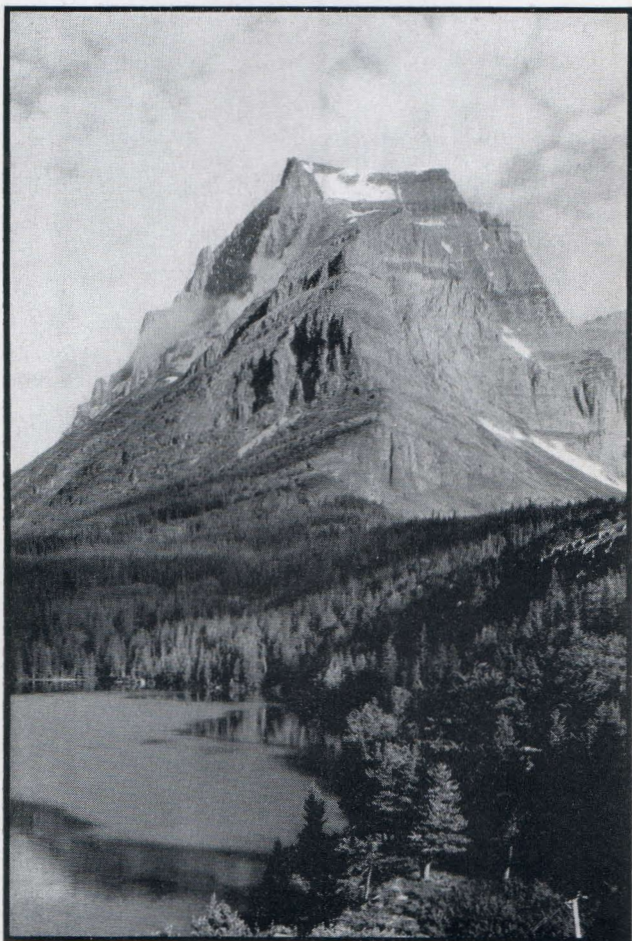
*through
the*

**GREAT NORTHERN
ADVENTURE LAND**

WHY GO WEST?

Well, you see . .

● Every one needs a change—new scenes, new faces, new ideas. Board the luxurious Empire Builder at Chicago, St. Paul or Minneapolis for a smooth, care-free journey to the Pacific Northwest and California.



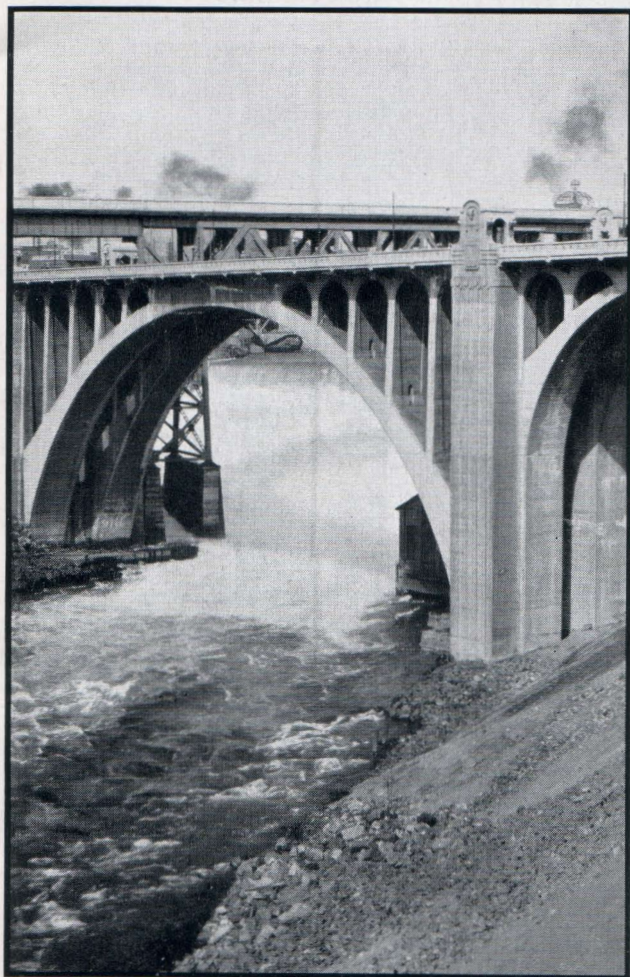
Going-to-the-Sun Mountain

Glacier Park—You can't miss it when you take the Empire Builder, for the Great Northern right of way marks the southern boundary. A gorgeous mountain spectacle at any season of the year, the Park is open from June 15 to September 15. If you travel west during the season take the Logan Pass Detour through the heart of the Park—you can do it in 24 hours. A glorious interlude, and inexpensive.

WONDERFUL CLIMATE

Gorgeous Scenery

● The Pacific Northwest is brimful of gorgeous scenery—great mountain ranges trimmed with snow, evergreens, waterfalls, rivers and lakes. California carries on from pines to palms. The Pacific Coast enjoys an equable year 'round climate.

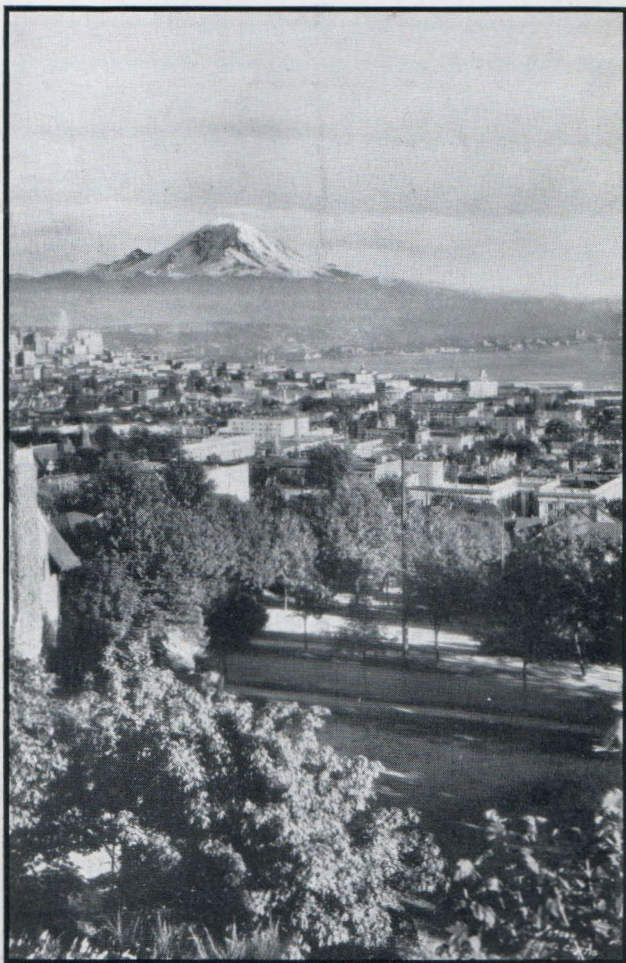


Monroe Street Bridge, Spokane Falls

Spokane—A river tumbles headlong through the second largest city in the State of Washington, falling 142 feet. The Indians called these flashing cascades "Spokane" or "Children of the Sun." Picturesque lakes, broad fertile valleys and lofty mountain peaks are in plain sight. 1900 feet above the sea and just 16 miles from the Idaho line, Spokane offers the visitor interest and hospitality.

SEATTLE

*Here they pick roses;
play golf the year around*



Mt. Rainier, from a Seattle home

Seattle—It has salt water beaches on Puget Sound, fresh water beaches on Lake Washington and Green Lake. Lake Union also lies within this city of nine hills, some of them rising 500 feet above sea level. From its streets and parks one sees Mt. Baker, northward; Mt. Rainier, southward; the snow-capped Olympics, westward; the Cascades, eastward. You see ships from all the seven seas in this, America's great port nearest the Orient and Alaska.

VANCOUVER *and* VICTORIA

*Canadian Cities . . yes . .
but the Japan Current supplies
an equable climate*

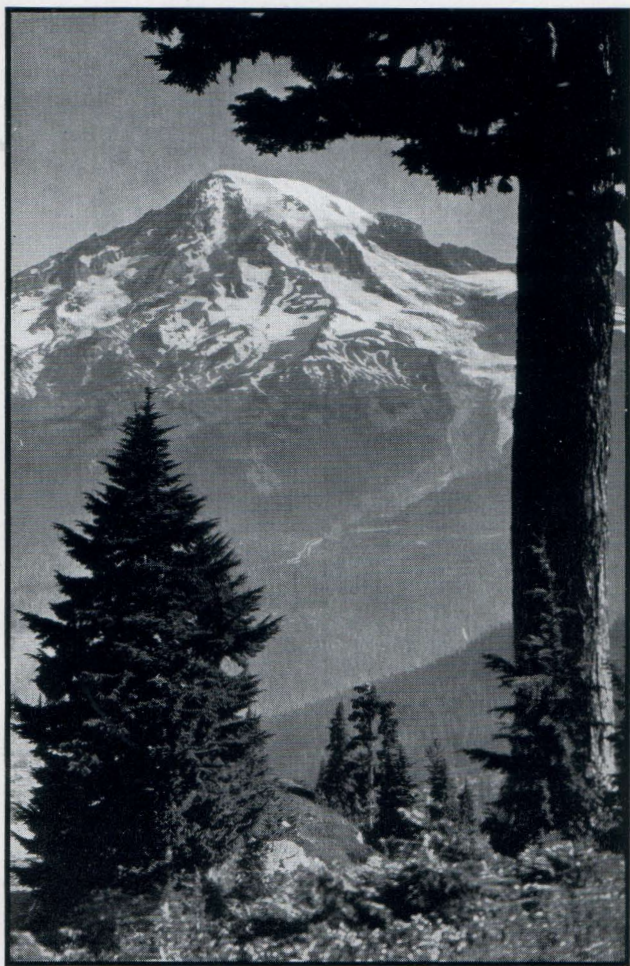


Parliament Building in Victoria, B. C.

Victoria—a quaint ivy-clad bit of Old England, on the southern tip of Vancouver Island, capital of British Columbia. Its semi-tropical gardens and flowers are worth crossing an ocean to see. Eighty-six miles northeast across the Gulf of Georgia is Vancouver, British Columbia's largest city. Both are easily reached from Seattle. Other cities you should see are Everett, Bellingham, Bremerton.

A MOUNTAIN THAT DOMINATES THE PACIFIC NORTHWEST—

its many towns and hamlets



Mt. Rainier, considered the most beautiful mountain in America, is an extinct volcano 14,408 feet high. It is now a National Park. It is a glorious sight visible from Seattle and Tacoma and many towns and hamlets throughout this beautiful country.

ANOTHER GREAT MOUNTAIN USED AS A LANDMARK

by ships at sea and by Canadians



Mt. Baker—another famous landmark of the Northwest, is a National Forest. Rising 10,780 feet it serves as a guide to ships at sea. It is a visible joy to Seattle, Victoria, Vancouver and Bellingham, the city which is the gateway to Mt. Baker National Forest.

TACOMA

Lumber Capital of the West

Tacoma is just fifty miles from Mt. Rainier. Part of the city is on a plateau 300 feet above the sea, but ocean-going vessels dock at its feet. Snow-capped mountains rise to the east and the west and plunging mountain torrents furnish not only sport for the fisherman but power for the city's great industries.



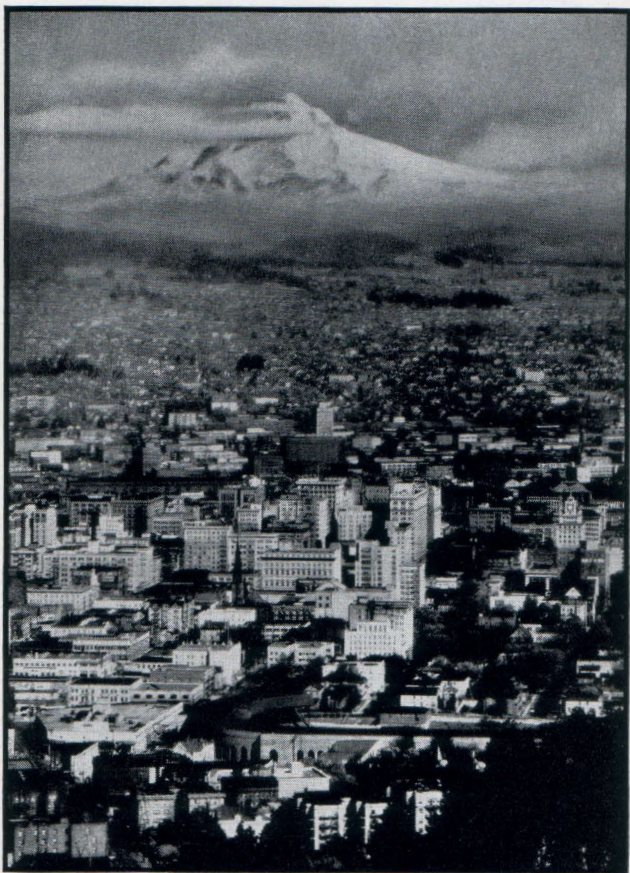
Mt. Rainier from a Tacoma skyscraper

Tacoma visitors enjoy both the mountains and the sea. For Puget Sound and its wooded islands are as beautiful in their way as is the grandeur of that most magnificent of peaks in North America—Mt. Rainier.

PORTLAND

City of Roses

Portland is proud of roses picked at Christmas, of Mt. Hood (11,225 feet), of far-famed Columbia Highway. Not far from Portland is Astoria with important fisheries and lumber trade—a thriving city now where John Jacob Astor built a port more than a century ago to win a place in the Northwest fur trade.



Mt. Hood from downtown Portland

Portland is only four hours away from Mt. Hood over the Columbia River Highway. Across the Columbia River, Mt. Adams rises (12,037 feet). On nearby beaches Portlanders and guests go sea bathing. In nearby mountain streams they cast for fighting trout.

and then

CALIFORNIA

which means

Sacramento

SAN FRANCISCO

Oakland

Berkeley

Palo Alto

Santa Cruz

Monterey

Yosemite

Santa Barbara

LOS ANGELES

Pasadena

Palm Springs

HOLLYWOOD

San Diego

Agua Caliente [MEXICO]

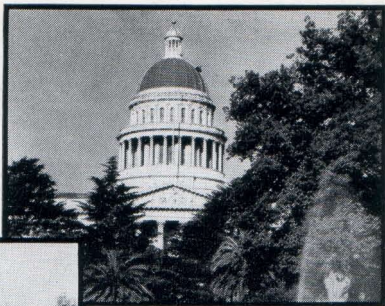
Catalina Island



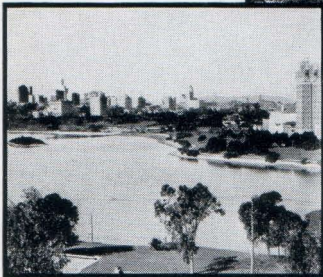
**the very names suggest
romance and beauty
and charm**



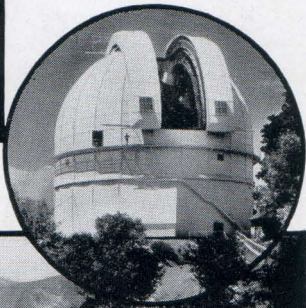
Right—The State Capitol at Sacramento, a beautiful edifice



Below—A view of Oakland from the shore of San Francisco bay



Below—Mt. Wilson Observatory near Pasadena



Below—Lookout on Artist's Point, Yosemite National Park



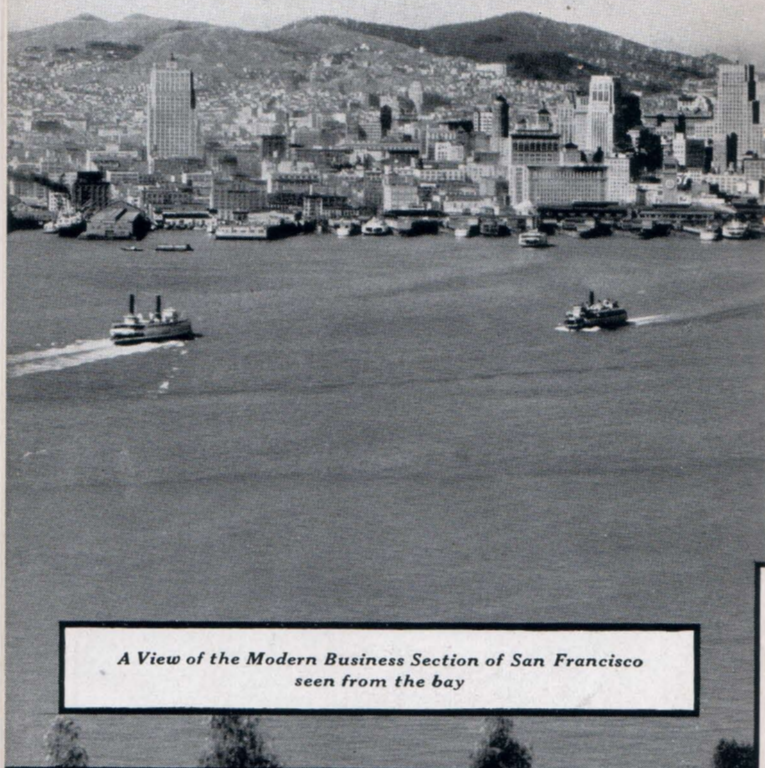
Right—Del Monte Hotel near the Bay of Monterey



Above—Long Beach, Charming Seaside Resort

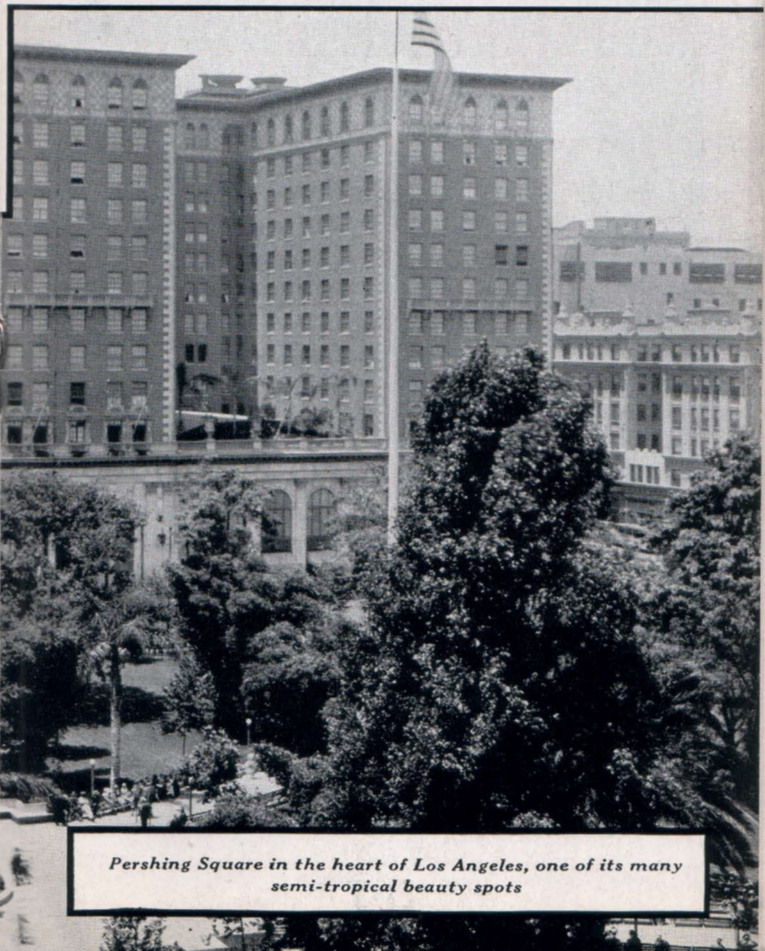
Right—Palm Springs Popular Desert Resort 113 Miles East of Los Angeles



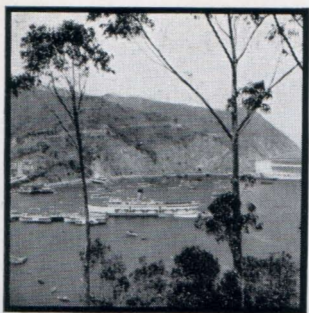


*A View of the Modern Business Section of San Francisco
seen from the bay*





Pershing Square in the heart of Los Angeles, one of its many semi-tropical beauty spots



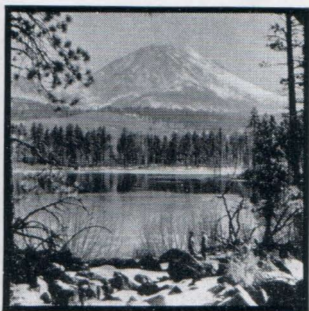
Avalon Bay, Catalina Island



*Agua Caliente, Hotel Resort
near Tiajuana, Mexico*



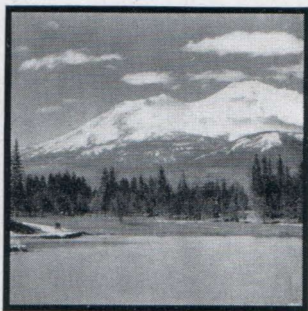
*Palm Canyon near Palm
Springs Desert Resort*



*Mt. Lassen—only active vol-
cano in the United States
proper*



*Vista Del Arroyo Hotel, typical
of Pasadena*



*Mt. Shasta, Monarch of North-
ern California, 14,380 feet high*



*The new Biltmore Hotel
at Santa Barbara*



*San Luis Rey Mission
in San Diego*

HAVING DECIDED TO GO WEST

THE NEXT QUESTION
IS **HOW?**



We recommend

"The EMPIRE BUILDER"



*One of America's Finest
Trans-Continental Trains*

**Air-conditioned Dining and
Observation Cars**

A train whose equipment, service and traditions are of the finest. Of which travelers often say, "It's an extra fine train without extra fare." It starts without jerking, gathers speed smoothly, maintains a uniform pace up grade or down—thanks to super-powerful locomotives, electrified or oil-burning for more than 1600 miles.

**Start from CHICAGO,
ST. PAUL or MINNEAPOLIS
via EMPIRE BUILDER**

*a Hotel on Wheels
that glides swiftly, luxuriously
westward*

A train so comfortable you judge all travel by its standards, the Empire Builder takes you from the Great Lakes to the Pacific at high speed over extra heavy rails laid on rock ballast and maintained in perfect condition.



Modern Picture of Modern Chicago



Above—Business district of St. Paul. Below—Business district of Minneapolis



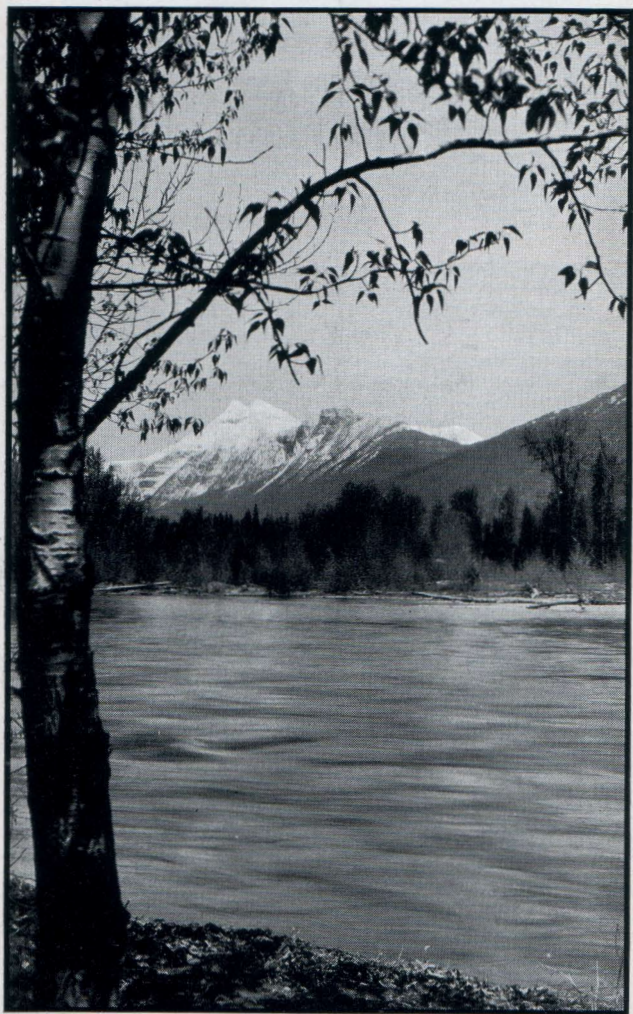
The Empire Builder on Stone Arch Bridge, Minneapolis

A fleet of six complete Empire Builder trains is constantly in service between Chicago, St. Paul, Minneapolis and the Pacific Northwest—Seattle, Tacoma and Portland.

CERTAINLY A FASCINATING ROUTE



*We cross the Rockies
thru low Marias Pass*



Mt. Stimson, Flathead River, from Great Northern Railway

James J. Hill, the "Empire Builder," believed in water-level routes. Hence Great Northern makes good use of many a river valley in its low level short distance right-of-way thru 600 miles of mountain ranges. To you this means "comfort."

***and* WE HAVE TRAVELERS
WHO CROSS WITH US
YEAR AFTER YEAR**



*They say they never tire
of the "Empire Builder"*



We always like to see old friends board the Empire Builder at the Union Station in Chicago, at St. Paul, Minneapolis or other points en route. And we are glad to see new guests—they find a friendly welcome on this home-like train.

THEY RELISH "EMPIRE BUILDER" MEALS



Few ever miss a meal. The reason: excellent food faultlessly served, and low prices

Back of the dining room must be kitchens with competent chefs. Chefs with skill, imagination, resourcefulness. Also deft and well trained waiters. And menus that provide for everyone's tastes and everyone's purse. You may be on a diet—but even a diet is enjoyable in an Empire Builder dining car. All Empire Builder dining cars are air-conditioned.

THEY LIKE OUR FRIENDLY SERVICE



*We are often complimented by guests who say
they wish the trip were longer*

Your home is duplicated on the **EMPIRE BUILDER**—sun room—living room—library—bedroom—bath—with lounge—radio—barber and valet added for good measure. Here you will find a smiling eagerness to anticipate your wishes. That is what makes the hours pass as swiftly as the miles. Empire Builder Dining and Observation Cars are Air-Conditioned.

THEY SPEND HOURS *just* "WATCHING the WEST GO BY"



*From the Great Lakes to the Pacific Northwest,
every daylight hour brings interesting things
to view along the Empire Builder route*

The Great West glides swiftly by your windows—enterprising cities, prosperous farms, ranches, towns, oil fields, Indian Reservations, Glacier National Park, mountain ranges, famous rivers, settlers' clearings, orchards, lumber camps, mines, more cities in the Inland Empire and the Puget Sound Country. Two days is all too short a time for this fascinating parade.

THE REAL COSTS OF TRAVEL

THERE has been a good deal of error in thinking of travel costs. Sometimes we have been fooled like the man who exchanged his good money for the pig in the poke. We have deluded ourselves into assuming that highway travel must be cheaper than the more comfortable forms of travel by train because, for example, gas costs less per mile than a train ticket.



The real facts are that today train travel on the Great Northern Railway and other western lines is actually cheaper than highway travel. But even before Great Northern led the way to the new low basic fare of 2c per mile in coaches and tourist sleeping cars, train travel compared favorably in cost with other forms of travel.

In some apparently inexpensive forms of travel there are eight different items that must be figured into actual cost. But when you buy a ticket on the Empire Builder you need figure only three items—cost of ticket, meals and sleeping car berth.

Isn't it a comfort to start your journey knowing exactly what it will cost, exactly when you will start and arrive? Isn't it gratifying to know that you will be safeguarded by the experience, equipment and personnel of a great trans-continental railway system—the Great Northern?

And all this now costs so little!

Great Northern Travel Headquarters

Boston, Mass.	80 Boylston St.
Chicago, Ill.	212 So. Clark St.
Cincinnati, O.	608 Traction Bldg.
Cleveland, O.	508 Hippodrome Bldg.
Dallas, Tex.	1004 S. W. Life Bldg.
Des Moines, Ia.	305 Equitable Bldg.
Detroit, Mich.	Main Floor Lobby,
Transportation Bldg.	
Duluth, Minn.	424 W. Superior St.
Fargo, N. D.	702 Black Bldg.
Grand Forks, N. D.	Great Northern Station
Kansas City, Mo.	544 Railway Exchange Bldg.
Milwaukee, Wis.	502 Majestic Bldg.
Minneapolis, Minn.	640 Marquette Ave.
Minot, N. D.	Great Northern Station
New York, N. Y.	595 Fifth Ave. at 48th St.
Omaha, Neb.	1421 First National Bank Bldg.
Philadelphia, Pa.	504 Finance Bldg.
Pittsburgh, Pa.	214 H. W. Oliver Bldg.
St. Louis, Mo.	520 Boatmen's Bank Bldg.
St. Paul, Minn.	4th & Minnesota Sts.
Sioux City, Ia.	403 Commerce Bldg.
Sioux Falls, S. D.	504 E. Eighth St.
Toronto, Ont.	507 Royal Bank Bldg.
Winnipeg, Man.	414 Main St.

A. J. DICKINSON

Passenger Traffic Manager

St. Paul, Minn.

