

## SCHEDULES

### Eastbound

Eastbound the leaving time has been set to make connections in the Twin Cities with the **Oriental Limited**, the **Winnipeg Limited** and the **Red River Limited**, as follows:

#### TRAIN SCHEDULE

	<b>Oriental Limited</b>	<b>Winnipeg Limited</b>	<b>Red River Limited</b>
Ar. Minneapolis.....	6:55 am	7:12 am	6:50 am
Ar. St. Paul.....	7:30 am	7:45 am	7:25 am

#### AIRPLANE SCHEDULE

Lv. Minneapolis 8:30 am	Wold-Chamberlain Field
Lv. St. Paul..... 8:40 am	Municipal Airport
Ar. Chicago..... 12:10 pm	Cicero Airport

Connections are made at either the 63rd Street or Englewood stations with the fast trains, leaving Chicago for eastern and southern destinations.

### Westbound

Westbound planes will leave Chicago on a schedule making connections in the Twin Cities with the **Glacier Park Limited** and the **Red River Limited**, as follows:

#### AIRPLANE SCHEDULE

Lv. Chicago.... 3:00 pm	Cicero Airport
Ar. St. Paul.... 7:00 pm	Municipal Airport
Ar. Minneapolis 7:10 pm	Wold-Chamberlain Field

#### TRAIN SCHEDULE

	<b>Glacier Park Limited</b>	<b>Red River Limited</b>
Lv. St. Paul.....	11:00 pm (sleeper ready 9:45 pm).	9:45 pm
Lv. Minneapolis	11:45 pm	10:25 pm

Passengers arriving in Chicago on morning trains and using the air service to the Twin Cities are afforded a stopover of half a day in Chicago without loss of time in making their westbound connections in the Twin Cities.

#### Transportation Between Depots and Flying Fields

Patrons of the Air-Rail service are transported between the Twin City Depots and the flying fields by the Yellow Cab Company. Eastbound passengers arriving in Chicago are taken from the Cicero Airport by busses operated by the Parmelee Company. Westbound passengers arriving in Chicago are transported from the depots by the Yellow Cab Company. Passengers arriving in the Twin Cities or Chicago are requested to present their tickets to representatives of the above-named companies who will promptly provide for their transfer.

### Great Northern Railway Travel Bureaus

Detailed information regarding the Twin Cities-Chicago Air-Rail Service, reservations and tickets may be secured through any of the Great Northern Railway offices listed below:

BELLINGHAM, WASH.....	212 Kulshan Bldg.
BILLINGS, MONT.....	311 Electric Bldg.
BOSTON, MASS.....	Shop 3—Little Bldg., 80 Boylston St.
BUFFALO, N. Y.....	683 Ellicott Square Bldg.
BUTTE, MONT.....	513 Metals Bank Bldg.
CHICAGO, ILL.....	113 South Clark St.
CINCINNATI, OHIO.....	609 Traction Bldg.
CLEVELAND, OHIO.....	508 Hippodrome Bldg.
DALLAS, TEX.....	1004 Southwestern Life Bldg.
DES MOINES, IOWA.....	305 Equitable Bldg.
DETROIT, MICH.....	Main Floor Lobby, Transportation Bldg., 131 La Fayette Blvd.
DULUTH, MINN.....	422 W. Superior St.
EVERETT, WASH.....	G. N. Station
FARGO, N. D.....	603 First National Bank Bldg.
GRAND FORKS, N. D.....	G. N. Station
GREAT FALLS, MONT.,	802 1st National Bank Bldg.
HELENA, MONT.....	Placer Hotel Bldg.
KANSAS CITY, MO.....	516 Railway Exchange Bldg.
KLAMATH FALLS, ORE.....	Slater Bldg.
LOS ANGELES, CAL.....	605 Central Bldg.
MILWAUKEE, WIS.....	812 Majestic Bldg.
MINNEAPOLIS, MINN.....	524 2nd Ave. So.
MINOT, N. D.....	G. N. Station
NEW YORK, N. Y.....	595 Fifth Ave., Cor. 48th Street
NELSON, B. C.....	421 Baker St.
PHILADELPHIA, PA.....	504 Finance Bldg.
PITTSBURGH, PA.....	206 Oliver Bldg.
PORTLAND, ORE.....	201 Morgan Bldg.
ST. LOUIS, MO.....	517 Boatmen's Bank Bldg.
ST. PAUL, MINN.....	4th and Jackson Sts.
SAN FRANCISCO, CAL.....	1009 Hearst Bldg.
SEATTLE, WASH.....	1205 4th Ave.
SIOUX CITY, IOWA.....	516 Nebraska St.
SPOKANE, WASH.....	Davenport Hotel
SUPERIOR, WIS.....	1227 Tower Ave.
TACOMA, WASH.....	116 So. Ninth St.
TORONTO, ONT.....	507 Royal Bank Bldg.
VANCOUVER, B. C.....	607 Hastings St.
VICTORIA, B. C.....	916 Government St.
WENATCHEE, WASH.,	203 Savings and Loan Bank
WINNIPEG, MAN.....	226 Portage Ave.

J. F. PEWTERS

Asst. Gen. Freight and Pass. Agt., Helena, Mont.

C. W. MELDRUM

Asst. Gen. Pass. Agent, Seattle, Wash.

F. T. HOLMES

Asst. Gen. Pass. Agt.

St. Paul, Minn.

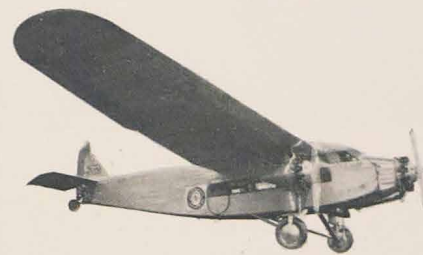
E. H. WILDE, Gen. Pass. Agent, St. Paul, Minn.

A. J. DICKINSON

Passenger Traffic Manager, St. Paul, Minn.

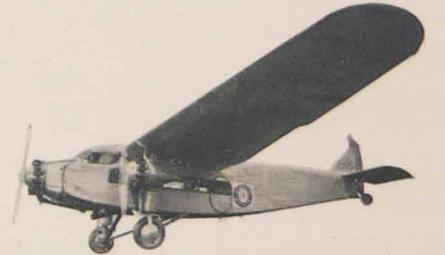
(Printed in U. S. A.)

## VIA AIR Chicago ~ Twin Cities



**GREAT NORTHERN**  
*A Dependable Railway*

## VIA AIR Twin Cities ~ Chicago



**GREAT NORTHERN**  
*A Dependable Railway*

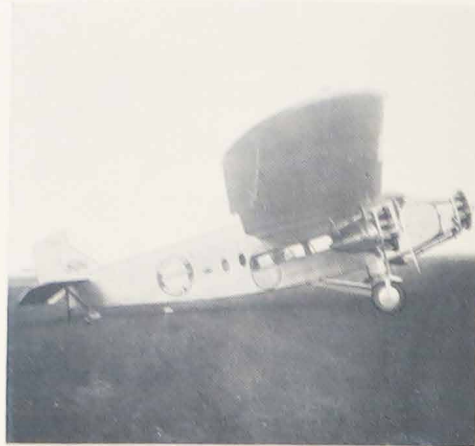


Business District, Minneapolis

## Via AIR

**A** NEW travel feature is now offered to passengers on Great Northern trains running into and out of the Twin Cities. This is the non-stop airplane service between Minneapolis-St. Paul and Chicago.

The ships used in this service are tri-motored monoplanes of all-metal construction manufactured by the Aircraft Engineering Department of the Ford Motor Company. They have a capacity of fourteen passengers and crew. The three Pratt-Whitney 410 horse-power Wasp motors give these planes a top speed of 135 to 140 miles per hour and a cruising speed of 115 miles per hour. The cabins are roomy and are equipped with comfortable upholstered seats. In each cabin is a separate compartment for those who wish to smoke. In addition to the space provided for passengers there is room for baggage and express. The planes are operated by the Northwest Airways, Inc., associated with the



A Northwest Airways Ship

Trans-Continental Air Transport Company. This company is the one with which Colonel Lindberg is connected.

For those who desire to reach their journey's end as speedily as possible this "air hop" will shorten the journey across the continent by a half day or more. It makes it possible for passengers from the Pacific Northwest and from Canadian cities arriving in St. Paul and Minneapolis in the morning on the eastbound Oriental



The First Passengers Arrive in Chicago

Limited and the south-bound Winnipeg Limited and Red River Limited to board the airplane at the Twin City airports and arrive in Chicago in time to make connections with the east and south-bound limited trains that leave Chicago at noon or later.

To others it will be the means of adding a new and unusual feature to their journey, for the route of the plane high above the waters of the Mississippi and over the rolling farm lands of

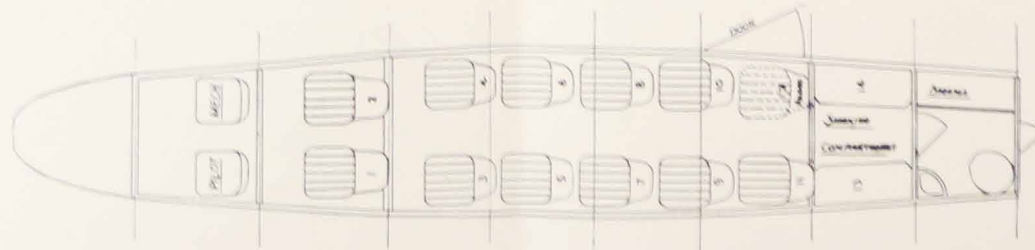


Diagram of seating arrangement in 14-passenger planes used in the Chicago-Twin Cities Air Transportation Service



Michigan Boulevard, Chicago

southern Wisconsin and northern Illinois is a trip of rare beauty.

The well-marked route followed and the many landing fields scattered between the Twin Cities and Chicago make this trip a safe one. Also, as the initiated know, there need be no fear of dizziness, for there is no sense of height experienced while watching the diminutive landscape slide by far underneath the speeding plane, such as you get when gazing into the street from the roof of a tall building or down the sheer slopes of some mountain precipice. The reason for this is that there is no line of perspective drawing the eye to make height comparisons.

The fare for this air journey will be \$45 which includes the trip by automobile between the stations in St. Paul or Minneapolis and Chicago and the airports in these cities. Thirty pounds of baggage will be carried free and all in excess of that to be charged for at 25 cents per pound—the Northwest Airways reserving the right to place a limit of 50 pounds of baggage per passenger.