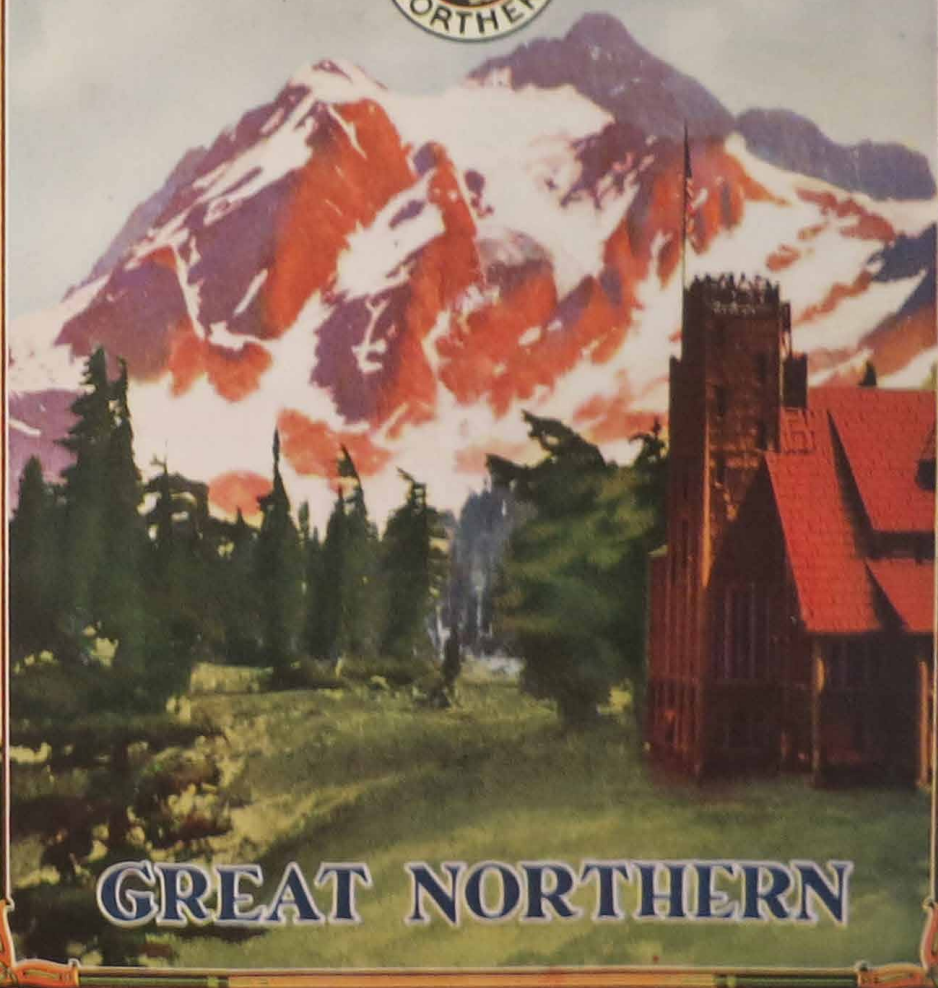


Mt. BAKER National Forest



GREAT NORTHERN

Mt. Baker Lodge

and

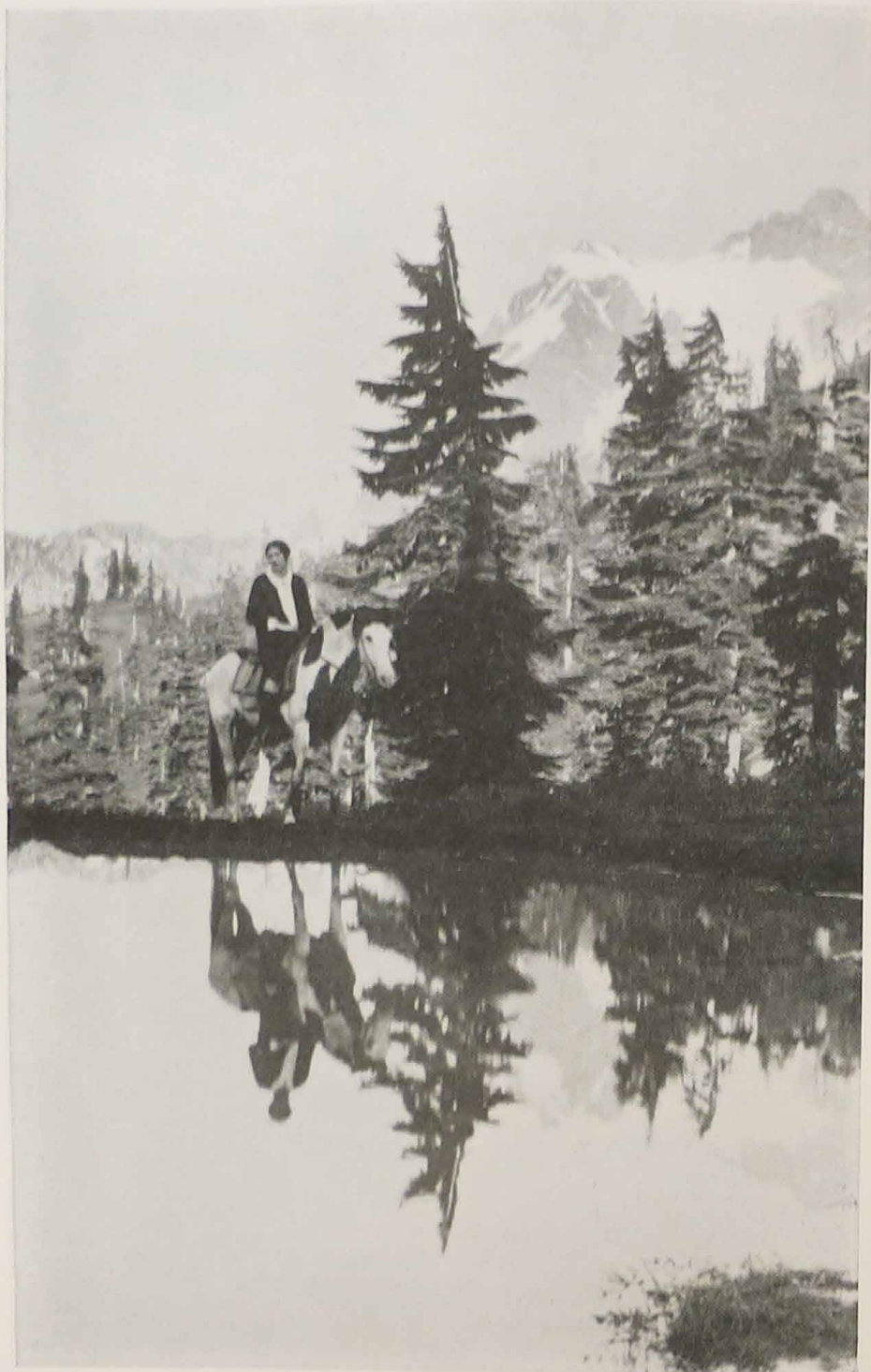
*The
Newest
National
Playground*



A Dependable Railway



Mount Baker



Mount Shuksan, Mount Baker National Forest

Mt. Baker National Forest

SIXTY miles east of Bellingham, Washington, in the heart of the scenic Mount Baker National Forest Park, lies the picturesque Mount Baker Lodge, the Pacific Northwest's newest and finest alpine resort for tourists, reached via the Great Northern Railway via Everett or Seattle. Springing up almost over night, as it were, this phenomenal development has opened up to American tourists one of the richest scenic paradises in the country, and has given added occasion to proclaim the Pacific Northwest as the Charmed Land of America.

Mount Baker Lodge marks the culmination of many years' dreaming and planning on the part of visitors to the Mount Baker National Forest to have provided a highway that would make this region accessible to tourists and to build there a resort unsurpassed in its charm in the center of this wealth of scenic beauty. The lodge was first officially opened for the season of 1927, and it will operate regularly from June 15 to September 15, each year.

The drive from Bellingham, Washington, to Mount Baker Lodge is one of the most magnificent from the standpoint of scenic grandeur in the West. The road leads out of Bellingham over 16 miles of perfect concrete highway, followed by a smooth and well-groomed macadamized surface. The way lies through mellow grain fields and rich orchards, here and there chubby, rosy apples bobbing over the highway and tempting the appetite. Through the quaint town of Deming one drives, and then on to Glacier, famed mining town, many years old.

At Shuksan is the lodge company's cabin camps, and from this cozy spot the route lies through vast stretches of virgin forest and up, up to entrancing heights that command gorgeous panoramas, some of the most spectacular scenic perspectives in the world. But the climb is not hard. Even, easy grades of never more than six per cent make the entire trip to Mount Baker Lodge a treat to motorists. And when one slips suddenly into Heather Meadows, all the glories of the trip are climaxed by the grandeur of a vast Nature Scene painted and tucked away in the fastnesses of mighty mountains. It is the locale of Mount Baker Lodge.

The setting for this new development is one of incomparable beauty and grandeur. The "New Scenic Wonderland of America" comprises an area of 75,000 acres in the heart of the Charmed Land of the Pacific Northwest. Magnificent Mount Baker, worshipped by the Indians of old, as the "Great White Watcher" and the outstanding feature of the landscape, rises 10,827 feet above sea level. Eleven miles to the east, and smiling down on the lodge is Mount Shuksan, 9,038 feet high. Between the two mighty sentinels is Heather Meadows, resting, in its repose, like a vast sunken garden.

The meadows are dotted with mirror-like lakes and carpeted with heather, which in late summer turns into many flaming hues. Giant evergreens, and as a background in the clear, bracing mountain air, the great glacier-covered peak itself, provide from many vantage points a view so exotically beautiful as to seem unreal.

In this setting, on the edge of Sunrise Lake, at an elevation of 4,200 feet, lies Mount Baker Lodge, of Swiss chalet type of architecture and constructed of native logs and cedar shakes. Steep pitched roofs have been built to match their wits with winter snows, and from an observation tower rising above the rest of the structure guests are provided with a complete panorama of surrounding mountains and lakes.



The lodge has 100 rooms, 60 with bath and connecting telephones, and all electrically heated. Immediately adjacent to the main lodge building is the new annex with thirty-two rooms, each with private bath. From every room a view similar to that afforded by the public rooms is available. Bungalows adjacent to the lodge enable accommodation of 300 guests. All rooms are equal in comfort and appearance to those of the finest city hostels.

The main lobby is 50 x 130 feet and is of massive log construction, with the ceiling decorated in Indian designs, perfect and true in every detail to the original art. The polished oak floor is bordered by beautiful parchment electric lamps, all painted in Indian motif. A huge fireplace, 20 feet wide and 10 feet in its opening, rises the full height of the lobby at one end and casts its cheer across the entire room.

The dining-room, seating 300 guests, is 50 x 90 feet, and there also is a private dining room. The dining service, unexcelled in its quality, is made possible by a huge model kitchen, fully equipped with its own refrigerating plant and all other latest accessories, all under the capable direction of an efficient chef. There is a spacious ladies' parlor on the mezzanine floor, from the veranda of which one gains an awe-inspiring view of the mighty Shuksan.

A central electric plant supplies light in the lodge and cabins, and heat for the bedrooms. A cafeteria service is operated in Heather Inn, a smaller lodge building a short distance from the main lodge. There are bungalow cabins, each with connecting rooms and completely equipped and housing from two to eight guests. Several cabins are provided with fireplaces. Guests staying in these cabins take their meals in the main dining room of the lodge, the entire project being operated on the American plan.

Ten miles below the lodge and fifty miles from Bellingham is Shuksan Camp, resting snugly along the shores of the Nooksack River at an elevation of 2,000 feet. Here, in the midst of a forest of great towering evergreens, many comfortable, natural log cabins peek out from beneath low-hanging boughs. These cabins may be rented furnished or unfurnished. There is a camp lunch room and store, where campers may take their meals and purchase their supplies, and there also is a gas and oil station. Each cabin is electrically lighted and supplied with cold water, and the entire grounds are electrically lighted and equipped with a bath house. Fuel is free to guests.

The recreation possibilities of the Mount Baker area are unlimited. Beautiful mountain lakes for boating and bathing surround the lodge, while the lakes and streams delight the fisherman. Saddle and pack horses and complete outfits for more extended excursions deeper into the mountains are available. Exploration trips nearby and at a distance, reaching points of rugged beauty amidst Alpine glories, may be made. Many of these require no special clothing and can be enjoyed by visitors of all ages. A month's stay will leave many delightful hikes, mountain summits, glaciers, lakes and beauty spots yet to explore.

Mount Baker is an extinct volcano, though fumes still rise from its several craters. Its summit is snow-turbaned, but its slopes support 44 square miles of ice fields and 12 prominent glaciers. Mount Shuksan, in contrast, bares its head to the clouds in a sharp rocky pinnacle, 1,000 feet in height. This mountain, one of the oldest peaks in the world, is characterized by ice-filled gorges, frowning crags, massive rock faces and dashing waterfalls.

Dancing, motion pictures, radio, camp fires, songfests, etc., keep the guests entertained in the evenings.



Mount Baker and Chain Lake

MOTOR STAGE SERVICE

Comfortable motor coaches, manned by skillful and careful drivers, maintain reliable state-supervised service from Bellingham, over the scenic Mount Baker National Forest Highway, direct to the lodge without transfer. These stages leave the Hotel Leopold, Bellingham, twice a day, at 9 A. M. and 3 P. M., arriving at the lodge at 12 M. and 6 P. M. Stages leave Mount Baker Lodge at 8 A. M. and 2 P. M., making convenient connections with Great Northern trains for Seattle and Vancouver, B. C. Round trip fare from Bellingham to the lodge is \$8.00, to Shuksan \$6.50.

RESERVATIONS

Reservations may be made by addressing the main office of the Mount Baker Development Co., Hotel Leopold Bldg., Bellingham, Washington, or by making inquiry at any tourist agency, hotel, auto club or chamber of commerce. Reservations for lodge and transportation should be made as far as possible in advance. Reservations will not be held later than 6 P. M. of date named unless the lodge is definitely advised that parties are en route.

TRIPS, HIKES, ENTERTAINMENT

What can one do at Mount Baker Lodge? What can one see?

A variety of saddle horse and hiking trips are offered. These range from half a mile to thirty miles and more, requiring from an hour to two days to negotiate and providing plenty of new experience and thrills for everyone, from the most hardy mountaineer to the neophyte. The Guide Service provides experienced guides who are anxious to show tourists how to get the maximum of enjoyment out of their stay in this new playground.



CHAIN LAKES. Mount Baker Lodge's saddle ponies leave twice daily for the trip around Table Mountain to the incomparable Chain Lakes, a series of three lakes linked in chain formation. Iceberg Lake, one of the group, is a miniature polar sea and even in the summer seldom is free from floating ice. Each lake has been well stocked with trout. This trip, four miles each way, requires four hours.

KULSHAN RIDGE. One of the most popular of the shorter trips is that to Kulshan Ridge, along a sky-line of every-changing vistas. A spectacular view of Swift Creek Canyon is offered from this ridge. Saddle horses leave twice daily for Kulshan Ridge, via Table Mountain, the distance being two miles.

TABLE MOUNTAIN. This hike is the talk of the tourists, for it offers a grand medley of sights. There is no finer half-day hike anywhere than that to Table Mountain, over Table Mountain Glacier to heights where one can look down for thousands of feet on the dreamy repose of Chain Lakes. Mount Baker looms up startlingly before you when you set foot on the surface of Table Mountain.

PANORAMA DOME. For a splendid panorama of Heather Meadows and the lodge, a hike or pony-trip to the top of "Panoram" is suggested, and nearly everyone visiting the lodge makes this one and one-half hour trip, for it is an easy climb and leaves the memory filled with wonderful visions of the trip to Mount Baker Lodge.

AUSTIN PASS. A delightful twenty minutes takes one to the head of Terminal Lake and Austin Pass from where, the tourist, surrounded with glorious peaks, can sit and revel in the spell of the Alpine wonders about him.

SHUKSAN ARM. The journey to Shuksan Arm, made via the Panorama Dome trail, leads one through a small canyon and up and along the ridge towards Mount Shuksan.

BAGLEY LAKE. Leaving the road at Terminal Lake and crossing the meadows towards Table Mountain, the tourist comes suddenly upon Bagley Lake, an extinct crater, about which are many interesting rock formations, and near which have been found petrified clam shells. This trip is filled with interest and requires not more than two hours.

THE SADDLE. For a bracing climb to scenic outlooks far up, the hike to the Saddle between Table Mountain and Mount Hermann is well worth while. Following around the south side of Bagley Lake, the tourist climbs over the rocks and heather slope to a point where the climber looks out on Mount Baker and Chain Lakes. There is no trail, but the pathfinding is easy on this three hour trip.

POWER DAM SITE. A short delightful walk can be taken from the hotel to the site of the power dam, in the rear of the lodge, and then following Bagley Creek to Bagley Lake.

BAKER LAKE. Just ten miles from Mount Baker Lodge lies picturesque Baker Lake, the site of a large government fish hatchery, and one of the gems of the forest. In going to Baker Lake the tourist follows the trail from Austin Pass down towards Swift Creek, descending from an elevation of 4,630 feet to 670 feet. This trip is recommended for only those in the best of hiking trim.

BAKER HOT SPRINGS. On the trail to Baker Lake six miles below Austin Pass the hiker passes Baker Hot Springs, where the water stays at a temperature of 110 degrees and provides fine bathing.



SHOLES GLACIER. This is a thrilling trip for those who wish to explore a living glacier. Tourists are thrilled with their visits to the ice caves and crevasses. This is an all-day journey.

COLEMAN PEAK. One of the most magnificent views in the Mount Baker region is that from Coleman Peak. The climb takes one across the upper slopes of Sholes Glacier and then up over the rocks for a short distance to the summit. It takes six hours to climb Coleman Peak and return.

MOUNT HERMANN. This is an all-day climb, strenuous in spots, but well worth the effort, for it affords splendid sights of Alpine scenery. Mount Hermann lies directly behind the lodge.

LAKE ANN, MOUNT ANN. Nestling at the foot of Mount Shuksan, and commanding a magnificent view of the great Hanging Glacier, Lake Ann is one of the most beautiful spots on the earth. This lake can be reached via the Shuksan Arm or by following the Baker Lake trail for a mile below Austin Pass, and then eastward through the timber towards Mount Shuksan. Mount Ann can be scaled from this point and offers a glorious scaling. The trip to Lake Ann requires six hours, but Mount Ann is an overnight trip, camp being made near Lake Ann.

LASIOCARPA RIDGE. Lasiocarpa Ridge provides a variety of mountain climbing. To approach the ridge the climber crosses Sholes Glacier at the foot of Coleman Peak, on across to the great crevasses and ice caves and thence up over a gradual heather slope from Camp Kiser to the highest point on the ridge. This is an unusual trip, offering startling panoramas and requiring an entire day.

EPLEY PORTALS. Genuine thrills are in store for the hiker who aspires to approach Mount Baker as far as Epley Portals. The spectacular part of this trip is the crossing of Mazama and Sholes Glaciers. From the Portals one faces out on to Rainbow Glacier, one of the greatest icefields on Mount Baker, and can easily pick out the route taken by climbing parties on their way to the summit of Mount Baker.

BURRO TRIPS. Burros can be obtained for children to ride around in the meadows. Children are delighted with the unusual experience of riding around the crystal lakes and over the colored heather.

SUMMIT CLIMBS OF MOUNT BAKER AND MOUNT SHUKSAN. Under the direction of experienced guides the mountain climber or hiker in fit physical condition may climb Mount Baker or Mount Shuksan. The summit climb of each peak requires two days and should be made only by those in good trim. Full information supplied by the guides on request.

SCHEDULED SADDLE HORSE TRIPS

CHAIN LAKES and return, once daily. Time, about 7 hours. Saddle Horse, Special Clothing and Guide Service, minimum 5 people, each.....\$ 5.00

KULSHAN RIDGE AND PANORAMA DOME and return, twice daily. Time about 4 hours. Saddle Horse, Special Clothing, and Guide Service, minimum 5 people, each.....\$3.50

GUIDE SERVICE

Guides for all hiking and saddle horse trips are provided by Mount Baker Lodge. Information regarding guide service and equipment rental can be obtained at the Guide Department and at the Information Desk, Lobby Floor. Rates for special service can be arranged through the Guide Department.



Mount Baker Lodge, 60 miles from Bellingham, elevation 4,200 feet

RATES FOR GUIDE SERVICE FOR HIKING PARTIES

SUMMIT CLIMB; Mount Baker or Mount Shuksan:

Minimum charge for 5 persons or less.....	\$50.00
More than 5 people, per person.....	10.00
Clothing and Equipment, per person.....	2.50
Food Service, per person.....	2.50

NORTH CRATER CLIMB, MOUNT BAKER:

Guide Service, Special Clothing, Food, minimum 5 people, each.....	\$10.00
--	---------

SUMMIT CLIMB, MOUNT ANN:

Guide Service, Special Clothing, Food, minimum 3 people, each.....	10.00
--	-------

SUMMIT CLIMB, MOUNT HERMANN:

Guide Service, Special Clothing, minimum 3 people, each.....	4.00
--	------

SHUKSAN ARM CLIMB:

Guide Service, Special Clothing, minimum 3 people each.....	4.00
---	------

SHOLES GLACIER AND ICE CAVES:

Guide Service, Special Clothing, minimum 3 people, each.....	4.00
--	------

TABLE MOUNTAIN AND CHAIN LAKES:

Guide Service, Special Clothing, minimum 3 people, each.....	3.00
--	------

PANORAMA DOME AND KULSHAN RIDGE:

Guide Service, Special Clothing, minimum 3 people, each.....	2.50
--	------



MT. BAKER NATIONAL FOREST



LOCATION OF MT. BAKER LODGE:

Sixty miles east of Bellingham, Washington, in the heart of the 75,000 acre Mount Baker National Recreation Area, lately set aside by the U. S. Department of Agriculture in Mount Baker National Forest. Unlike a national park, there is no entrance fee on cars entering a national forest. Altitude at the lodge, 4,200 feet.

CONNECTIONS FROM SEATTLE TO BELLINGHAM: Distance 95 miles.

Great Northern Railway:

Leave Seattle on G. N. 8:00 A. M. Arrive Bellingham 11:55 A. M.

Leave Seattle on G. N. 5:00 P. M. Arrive Bellingham 8:15 P. M.

Fare:

\$3.47 one way. \$4.65 round trip. Hotel Leopold bus meets all trains. Fare 25c.

Plate Lunch at Hotel Leopold..... \$.65

Table d'hote dinner..... 1.00

Sunday dinner..... 1.50

For those making a more leisurely trip, the Hotels Leopold and Henry in Bellingham will make a delightful place for an all night stop. Every comfort and convenience will be found there and an over night stop in Bellingham will give the tourist an opportunity of seeing one of our most interesting coast cities.

CONNECTIONS FROM VANCOUVER TO BELLINGHAM: Distance 59 miles.

(Corrected to May 6, 1928)

Great Northern Railway:

Leave Vancouver, B. C. 12:01 A. M. Arrive Bellingham 2:40 A. M.

Leave Vancouver, B. C. 9:00 A. M. Arrive Bellingham 11:15 A. M.

Leave Vancouver, B. C. 4:30 P. M. Arrive Bellingham 6:45 P. M.

Fare:

\$2.32 one way. \$3.10 round trip.

TRANSPORTATION FROM BELLINGHAM TO MT. BAKER LODGE:

The Mount Baker Development Company operates splendid, 14 passenger motor stages, leaving the Hotel Leopold for the lodge twice daily; 16 miles of the 60 mile drive is paved, the balance of the 44 miles is excellent macadam road with easy grades.

Leave Bellingham 9:00 A. M. Arrive Mount Baker Lodge 12:00 Noon.

Leave Bellingham 3:00 P. M. Arrive Mount Baker Lodge 6:00 P. M.

Fare:

\$8.00 round trip. \$4.50 one way.

TRANSPORTATION FROM MT. BAKER LODGE TO BELLINGHAM:

Leave Mount Baker Lodge 8:00 A. M. Arrive Bellingham 11:00 A. M.

Leave Mount Baker Lodge 2:00 P. M. Arrive Bellingham 5:00 P. M.

TRANSPORTATION FROM EAST:

Via Great Northern Railway and Everett or Seattle.

TRANSPORTATION FROM BELLINGHAM TO SEATTLE:

(Corrected to May 6, 1928)

Great Northern Railway:

Leave Bellingham 2:50 A. M. Arrive Seattle 7:00 A. M.

Leave Bellingham 11:25 A. M. Arrive Seattle 2:15 P. M.

Leave Bellingham 6:50 P. M. Arrive Seattle 10:10 P. M.

TRANSPORTATION FROM BELLINGHAM TO VANCOUVER, B. C.:

(Corrected to May 6, 1928)

Great Northern Railway:

Leave Bellingham 4:10 A. M. Arrive Vancouver 7:40 A. M.

Leave Bellingham 11:55 A. M. Arrive Vancouver 2:30 P. M.

Leave Bellingham 8:15 P. M. Arrive Vancouver 10:45 P. M.

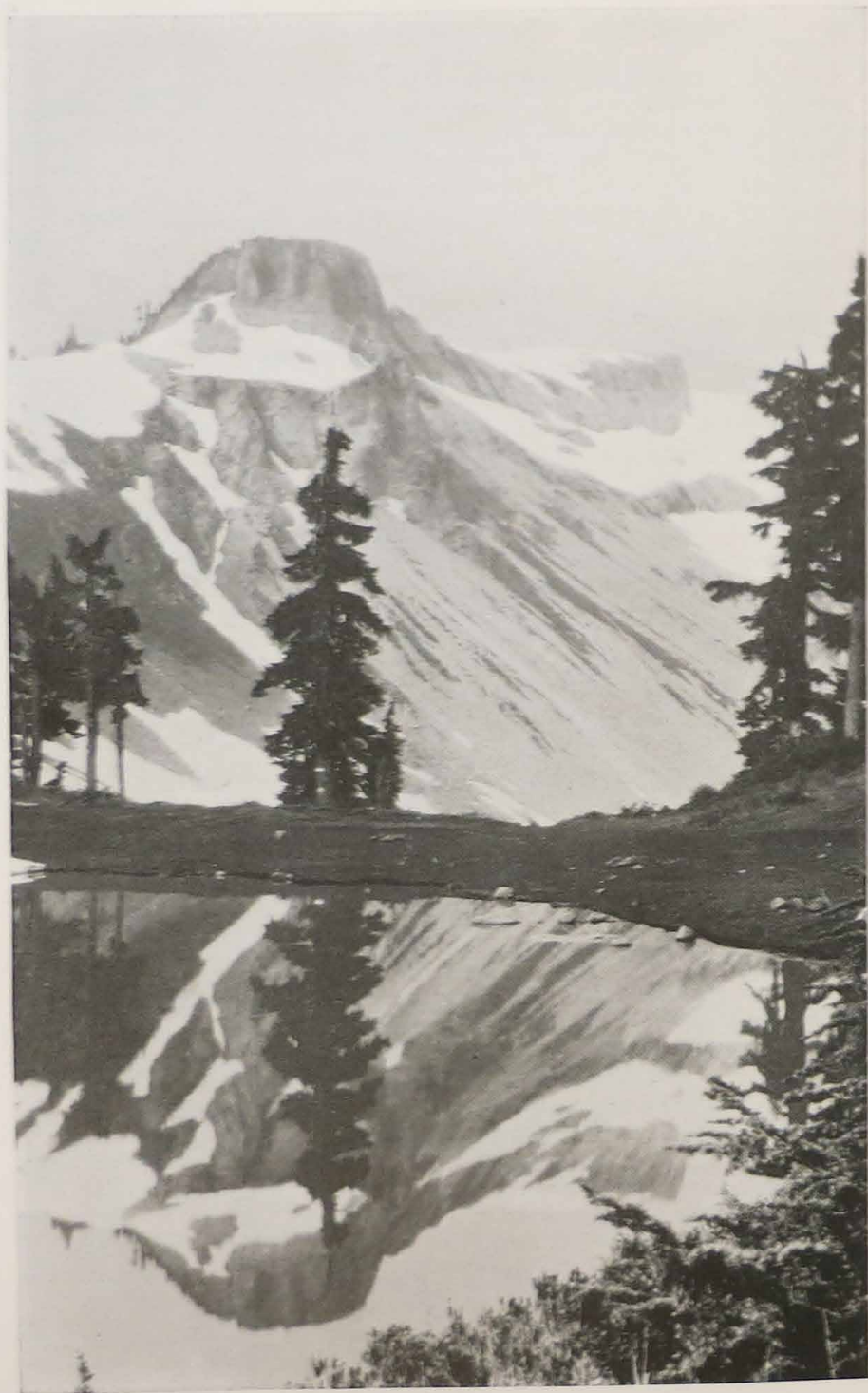


Table Mountain at end of Mount Baker Highway



MT. BAKER NATIONAL FOREST



ACCOMMODATIONS AT MT. BAKER LODGE:

Main Lodge Building:

Two floors of guest rooms, 132 in all, 60 with connecting baths, and new annex with thirty-two rooms, each with bath, and 40 with hot and cold water.

Lobby, 50 x 130 feet, with mammoth stone fireplace and hardwood floors.

Dining Room, 50 x 90 feet, with accommodations for 300. Building splendidly lighted and heated with steam and electricity.

RATES PER DAY AT LODGE: Season June 15th to September 15th

(Children under eight years, half rates)

Bungalow Cabin Rooms—(Meals Included)

Two or more persons in room, each.....\$5.50

One person in single room.....6.50

Cabin guests have equal access to Baths, Public Rooms and entertainment at Lodge.

Main Lodge Rooms—(Meals Included)

Two or more persons in room (hot and cold water) without bath, each.....\$ 7.00

One person in single room (hot and cold water) without bath.....8.00

Two or more persons in room, with bath, each.....9.00

One person in single room, with bath.....10.00

10% discount to guests remaining full week or more.

Single Meals: Breakfast \$1.25 — Lunch \$1.50 — Dinner \$1.50.

RECREATION FEATURES:

Hiking, horseback riding, mountain climbing, guide trips, fishing, swimming, boating, and dancing, bridge, radio concerts, etc., in the evening. Hostess.

SPECIAL NOTICE:

For rail passengers having the free coupon ticket from Seattle to Vancouver and return, the Mount Baker trip makes a wonderful side trip from Bellingham with the small transportation cost of \$8.00, plus accommodations at the hotel. For the passengers making the trip by C. P. R. one way, and the boat trip from Seattle to Vancouver or Vancouver to Seattle, we suggest the Mt. Baker Lodge trip via the San Juan Islands from Victoria (Sidney) to Bellingham as a delightful addition to their trip on the Sound.

The San Juan Islands, known as the "Thousand Islands of the Puget Sound," are a group of 172 picturesque islands lying between Vancouver Island and Bellingham. Tourists always thank us for routing them through this delightful part of the "Charmed Land," and we believe that your tourists will welcome this opportunity to prolong their trip on the salt water. Motor stages make the trip from Victoria to Sidney, a distance of 18 miles, to meet all boats through the islands.

Fare:

75c one way. \$1.25 round trip.

COMBINATION AUTO AND PASSENGER FERRY:

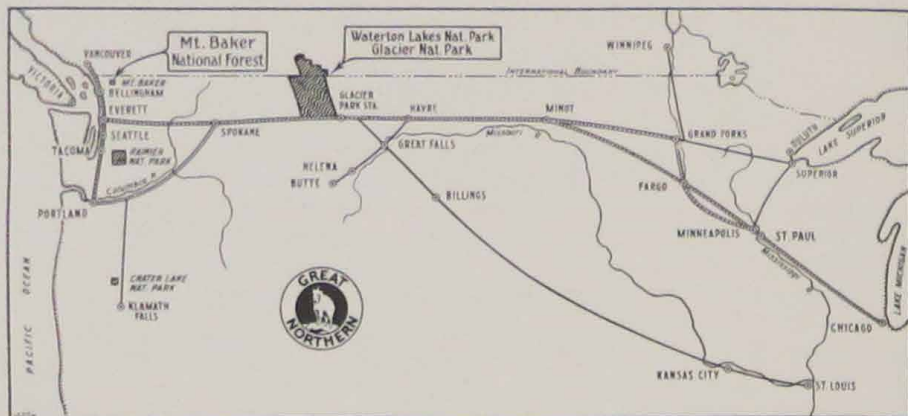
Leave Sidney 8:30 A. M. Arrive Bellingham 11:45 A. M. Leave Bellingham, returning, 12:30 P. M. (Noon). Arrive Sidney 4:00 P. M. where boat is met by auto stage taking passengers to Victoria.

(This boat service from May 20th to September 11th.)

Reservations for Mount Baker Lodge may be made with the Mount Baker Development Company, Hotel Leopold, Bellingham, Wash., any tourist agency, hotel, or auto club. Seattle office, New Washington Hotel

If any additional information is desired, please address inquiry to the undersigned.

MT. BAKER DEVELOPMENT CO.
Hotel Leopold,
Bellingham, Washington
B. W. HUNTOON, Manager.



Great Northern Travel Headquarters

that exist for your convenience. Each one is in charge of a travel specialist and a force of competent ticket men who will be glad to show you how to get to whatever resort you select in the quickest and most comfortable manner. Avail yourself of their service. They are anxious to serve you.

Bellingham, Wash.
212 Kulshan Bldg.

Billings, Mont.
311 Electric Bldg.

Boston, Mass.
Shop 3, Little Bldg.
80 Boylston St.

Buffalo, N. Y.
683 Ellicott Square

Butte, Mont.
513 Metals Bank Bldg.

Chicago, Ill.
113 South Clark St.

Cincinnati, Ohio
609 Traction Bldg.

Cleveland, Ohio
508 Hippodrome Bldg.

Dallas, Tex.
1013 Southwestern Life Bldg.

Des Moines, Iowa
305 Equitable Bldg.

Detroit, Mich.
Main Floor Lobby,
Transportation Bldg.

Duluth, Minn.
422 West Superior St.

Everett, Wash.
Great Northern Station

Fargo, N. D.
603 First National Bank Bldg.

Grand Forks, N. D.
Great Northern Station

Great Falls, Mont.
802 First National Bank Bldg.

Helena, Mont.
510 Power Bldg. and
Placer Hotel Bldg.

Kansas City, Mo.
516 Railway Exchange Bldg.

Klamath Falls
Slater Bldg.

Lewistown, Mont.
Great Northern Station

Los Angeles, Cal.
605 Central Bldg.

Milwaukee, Wis.
812 Majestic Bldg.

Minneapolis, Minn.
524 2nd Ave. So.

Minot, N. D.
Great Northern Station

Nelson, B. C.
421 Baker St.

New York, N. Y.
595 Fifth Avenue at 48th St.

Omaha, Neb.
308 Paxton Block

Philadelphia, Pa.
504 Finance Bldg.

Pittsburgh, Pa.
206 Oliver Bldg.

Portland, Ore.
201 Morgan Bldg.

St. Louis, Mo.
517 Boatmen's Bank Bldg.

St. Paul, Minn.
4th and Jackson Sts.

San Francisco, Cal.
1009 Hearst Bldg.

Seattle, Wash.
1205 4th Ave. and
407 Douglas Bldg.

Sioux City, Iowa
516 Nebraska St.

Sioux Falls, S. D.
504 East 8th St.

Spokane, Wash.
Davenport Hotel

Superior, Wis.
1227 Tower Ave.

Tacoma, Wash.
116 So. Ninth St.

Toronto, Ont.
507 Royal Bank Bldg.

Vancouver, B. C.
607 Hastings St.

Vancouver, Wash.
Great Northern Station

Victoria, B. C.
916 Government St.

Wenatchee, Wash.
203 Wenatchee Savings and Loan
Bank

Winnipeg, Man.
226 Portage Ave.

C. W. Meldrum, Asst. Gen. Pass. Agent, Seattle, Wash.

J. F. Pewters, Asst. Gen. Pass. and Frt. Agent, Helena, Mont.

W. A. Wilson, Asst. Gen. Pass. Agent, St. Paul, Minn.

F. T. Holmes, Asst. Gen. Pass. Agent, St. Paul, Minn.

E. H. Wilde, General Passenger Agent, St. Paul, Minn.

A. J. Dickinson, Passenger Traffic Manager, St. Paul, Minn.



A Dependable Railway