

# MONTANA MOUNTAIN RESORTS



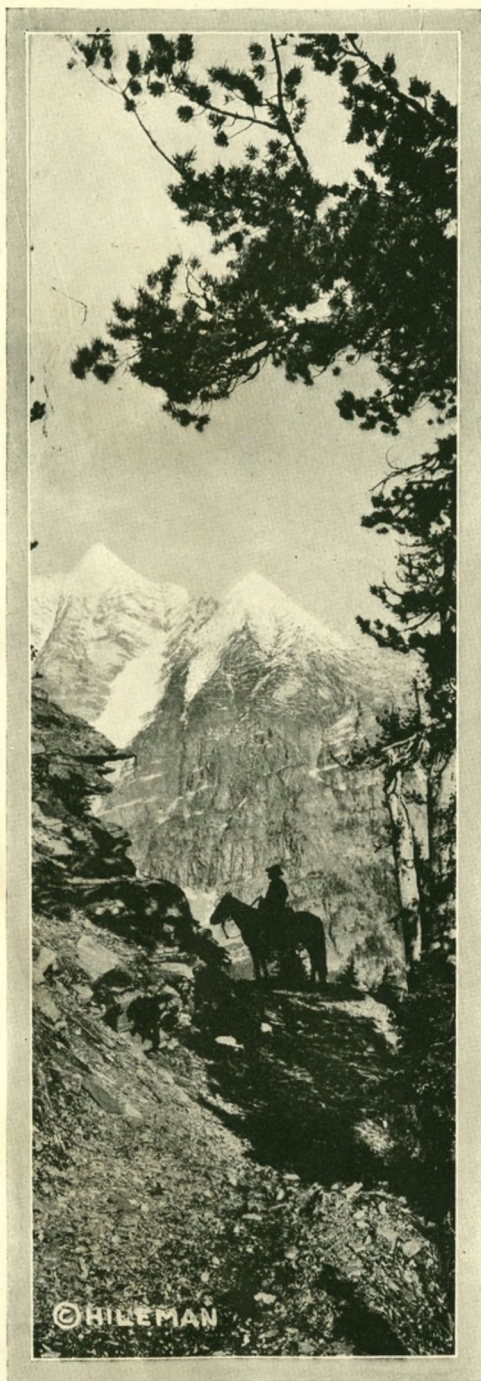
GREAT NORTHERN RAILWAY





# Montana Mountain Resorts

*A directory of Dude  
Ranches, Hotels and  
Camps in the terri-  
tory served by the  
Great Northern Ry.*







*A Fisherman's Paradise*





*A Rustic Mountain Camp*

## MONTANA MOUNTAIN RESORTS

In every man, woman or child there is something of the adventurer, the explorer or the pioneer. We read of the daring Indian scout such as Jim Bridger or Buffalo Bill Cody, of famous explorers like Lewis and Clark or David Thompson, or of the many prospectors who roamed every fastness of the northwest Rockies nearly three-quarters of a century ago in their ceaseless search for gold, and wish that we too could live for awhile such a life of freedom and adventure.

Many people think that these days are gone forever, that no more will the Red man hunt the buffalo on the wide plains or the mountain man hunt the beaver in the fastness of the Rockies and hold gay carnival with others of his kind at some secluded rendezvous. All this is true enough but those who have camped among the majestic Rockies of northwest Montana or ridden along some almost forgotten trail high up above their timbered slopes, know that it does not take much thought to imagine yourself back a hundred years when the west was still an unknown land peopled by almost legendary figures.

The same mountains rise like a vast barrier between the east and the west, the snows of centuries clinging to their topmost peaks. The forested slopes, in the main set aside by a beneficent government as National Forests and National Parks, form a vast reserve and playground for the present generation and for generations yet to come and have remained practically unchanged since the first white man gazed upon their pristine beauty. The same lakes glisten in the sunlight and the same trails follow the same streams and cross the mountains over the same passes as before.



Of course there have been many changes in this mountain area but they have been a matter of construction rather than destruction. No longer does it take weeks and even months to reach their eastern slopes; the growth of the railroad has made them accessible to the visitor with a limited time at his disposal. The rancher's cabin and the rustic lodge have provided a place where he can stay and enjoy all of the comforts which his city softened body demands. The experienced guide and trail broken horse have made the mountain paths safe for the veriest tyro. Still—a hundred yards from the ranch doorstep he has shaken off the shackles of civilization, his tweed jacket and riding britches have changed to buckskin, his guide has become a faithful Indian scout and once again he is back with the explorer and adventurer. Each turn in the trail opens up new vistas, new adventures.

This is the Rocky Mountain country of today. A land where the civilization burdened citizen of the east can rub elbows with the great outdoors, learn something of the romantic past of the great Northwest, and return home a better man for his experience.

### Go Great Northern

For the journey to these Montana Mountain Resorts we wish to impress upon you the many advantages gained by going Great Northern, a route that makes a strong appeal to the traveler because of the excellent condition of its road bed, the protection afforded by the new light type block signals, the smooth, easy movement of the trains obtained by the reduction of grades and curves to a minimum, the use of powerful oil-burning locomotives on its main line west of Williston, N. D., the luxuriousness of the train equipment and the beauty and the variety of all the scenery en route.



*A String of Beauties*

### The Waterway Route

You will follow historic rivers; the Mississippi, the scene of the explorations of Radisson, Marquette and La Salle; the Red River of the North, home of the ancient Red River ox cart; the Missouri, the Big Muddy of steamboat days, followed by Lewis and Clark in their memorable journey across the continent and along whose banks can still be seen the site of old Fort Union, mightiest of the fur trading posts; and if your route takes you on the Havre-



Butte or Billings-Shelby lines you will see still other rivers and streams whose names ring of memories of the free trapper and the prospector.

### The Four Districts

In this booklet we have tried to list **all** the resorts in the Montana Rockies that are accessible from points on the Great Northern Railway. They vary from the ranch cabin to the modern hotel with all conveniences, and to facilitate the arrangement of these resorts we have divided the mountainous area into four districts as follows:



*A Stop for Lunch*

1. The East Glacier—Rocky Mountain country—that portion of the Rockies lying in the eastern side of Glacier National Park and extending south as far as the Pendroy and Augusta branch lines.
2. The Gate-of-the-Mountains country—that portion of the Rockies lying to the west of Helena and extending east to include the Belt and Little Belt Mountains.
3. The Flathead Lake country—the country around Flathead Lake, including the Cabinet and Mission ranges.
4. The West Glacier country—the western slopes of the Rockies in and adjacent to Glacier National Park and extending west to include Whitefish Lake.

### Low Round Trip Fares

When you have made your selection from the resorts listed in this directory it will be well to write to address listed with the resort to check up on reservations and costs. Then communicate with the nearest Great Northern representative listed on page 40 and he will make all arrangements for transportation, etc., to and from the nearest Great Northern station. Ask him about the low round trip summer tourist fares that will be in effect to points in Montana between June 1 and September 30. These fares are substantially lower than the regular rates and it will be well to have the agent explain them to you.





**The Rocky  
Mountain Country**

*1—Party Leaving Bruckert's Ranch.*

*2—Dean Lake.*

*3—Rock Creek Falls.*

*4—The Sun River Canyon.*

*5—A Hunting Camp.*





# East Glacier-Rocky Mountain Country

In the country adjacent to Glacier National Park and scattered along the eastern slopes of the Rocky Mountains throughout the Lewis and Clark National Forest are many outing resorts ranging from the rustic lodge with all modern conveniences to the quiet primitive cabin used as a base of operations for riding and pack-horse camping trips into the mountains.

This country has long been noted for the sheer ruggedness of its mountain scenery, the profuseness and variety of its wild life and the excellence of its hunting and fishing. The greater part of it is still a primeval wilderness, practically unchanged since the days of Lewis and Clark and the time when the "Free Trapper" roamed over the timbered slopes.

Its history is as interesting as its scenery for this was the ancient hunting ground of the dreaded Blackfeet Indians of a century ago, now picturesque farmers and cattle raisers on their reservation just east of Glacier National Park. Here, too, roamed many a historic character famous in the early annals of the Northwest, the explorer, the fur-trader, the miner and the free trapper: men who have left many a reminiscence of their stirring times in the names of peaks and valleys.

The Continental Divide runs north and south along the west side of this region and the trails wind back and forth across it—now wandering along through some secluded mountain valley, now clinging to the precipitous wall of a frowning canyon, now high up above the timber line where one can gaze out upon the wide expanse of the Montana prairies or westward toward an endless chain of towering peaks.

Horseback riding and hiking are the principal attractions of this country along with fishing in the lakes and streams and hunting during the early spring and the fall seasons in the areas outside of Glacier National Park. At many of the resorts there are excellent libraries for the evenings and rainy days, as well as clock golf courses, croquet and tennis grounds. Rodeos, broncho busting and the old cow-camp life are featured at the "Dude Ranches."

The resorts in the vicinity of Glacier National Park are reached from stations on the main line of the Great Northern, while those farther south in the Lewis and Clark National Forest are only short distances from the Havre-Great Falls and the Great Falls-Shelby lines or the Pendroy and Augusta branches. Convenient service is maintained on all these lines and the ranch and resort people will meet guests at the stations upon advance notice.



### Allan Ranch

Eight miles by horse trail beyond the end of an auto road which traverses a narrow canyon stands a mountain lodge on the banks of a shining emerald trout laden river, surrounded by big rock cliffed, green studded, game trodden mountains—the Allan Ranch. Here one may enjoy all the outdoor sports which nature provides. Everything is clean and comfortable, meals well served with fresh milk, cream, butter, eggs, vegetables and ice from the ranch. Small cabins are used as sleeping quarters and the main lodge is used for dining and recreation. The place is electric lighted, has hot and cold running water and on the ranch grounds there is a warm plunge for the use of the guests. Its elevation of nearly 5,000 feet means cool nights and no mosquitoes. No formalities. Sport togs the rule. Interesting day trips afoot or on horseback to beaver workings, waterfalls, caves, mountains and streams. Piano, phonograph, radio, good library, dancing, games and gatherings around fireplace for evenings and rainy days.

Or if the far trails call, there are trips from three to ninety days into a big game, big trout, big scenic country, reached only by pack train. Everything is arranged for and furnished at the ranch for these trips. You bring your own bed roll and personal things, and it is your own individual party trip.



*The Bar Lazy D. N. Ranch*

The Allan Ranch is 25 miles from Augusta, Montana, and is reached by auto and horseback, the ranch people making regular trips every Saturday or meeting any train if given advance notice. The ranch season begins June 1st and ends November 15th. Thirty-five people can be accommodated at one time. For further information and rates write to Ralph Allan, Allan Ranch, Augusta, Mont.

### Bar Lazy D. N. Ranch

The Bar Lazy D. N. Ranch is a typical western ranch with first class accommodations for about fifty guests, situated in the heart of the Rocky Mountains at an elevation of 5,000 feet, almost on the Continental Divide and nine miles southwest of Glacier Park Station on the main line of the Great Northern Railway. The guest accommodations consist of a large ranch house, with living room, dining room, kitchen and sleeping quarters for twelve people. Additional guests are housed in smaller log cabins and tent houses. Here one can enjoy real western ranch life, horseback riding, hiking, mountain climbing, swimming, camping, hunting and fishing with efficient guides, packers and cooks.

The summer season is from June 15th to September 15th and the fall hunting season is from October 15th to November 15th. Guests will be met at Glacier Park Station upon advance notice. Address all communications and requests for information and reservations to Mr. A. B. Brash, Glacier Park, Mont.

### Broken Arrow Ranch

Situated in a charming location among the high hills just south of Glacier Park Station is the Broken Arrow Ranch, one of the oldest tourist ranches in northern Montana, with accommodations for from 25 to 30 guests. Its buildings include several small comfortably furnished log cabins for the guests and a large centrally located chalet containing a recreation room, dining room, kitchen and baths. The simple old time ranch life is the rule on this ranch. Each guest has his own horse and is allowed to roam the hills and valleys at will or to join one of the parties under the lead of an experienced guide. Numerous trails lead in all directions, to picturesque little lakes nestling among the



mountains, to trout laden streams or high up towards the haunts of the mountain sheep. During the fall months there is also excellent hunting for elk, deer, lion and bear in the country adjacent to the ranch.

The Broken Arrow Ranch is especially proud of their saddle horses and each year they break in some new ones so that the guests may see something of the old time ranch life without the frills of rodeos. Guests for this ranch are met at Glacier Park Station upon advance notice. Further information and rates may be had by writing to the owner, Mr. H. M. Ralston, P. O. Box 15, Glacier Park, Mont.

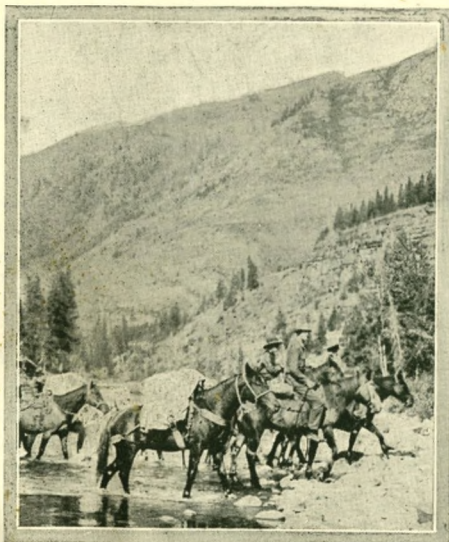
### Bruckert Ranch

About sixteen miles west of the Great Northern station of Augusta, Montana, and on the banks of Willow Creek is the Bruckert Ranch with accommodations for about sixty guests. A large centrally located log cabin with a big open porch, houses the dining and recreation rooms, while sleeping quarters are provided in adjacent small log cabins and wooden floored tents.

Running in all directions from the camp are innumerable trails leading to fishing streams, rocky gorges, lakes, mountains and waterfalls. During the fall season big game hunting for elk, deer and bear is to be had. Guests should bring fishing tackle and non-residence fishing license fee of \$3.50 may be paid at the ranch. The camp season is from May to November and requests for further information, reservations and transportation to the ranch should be addressed to Mr. Henry Bruckert, Bruckert Ranch, Augusta, Mont.

### Buffalo Head Ranch

Buffalo Head Ranch is located on the east shore of Lower St. Marys Lake some two miles by auto road from the St. Marys Chalets in Glacier National Park. It has accommodations for fifty guests in small four-room log cabins and also has a larger centrally located building containing a recreation lobby and dining room. The ranch season is from May 1st to November 1st and during the regular Glacier Park season the park busses provide transportation from Glacier Park station to the camp. At other



*A Trail Party*

times the ranch people will meet guests at the train if given advance notice.

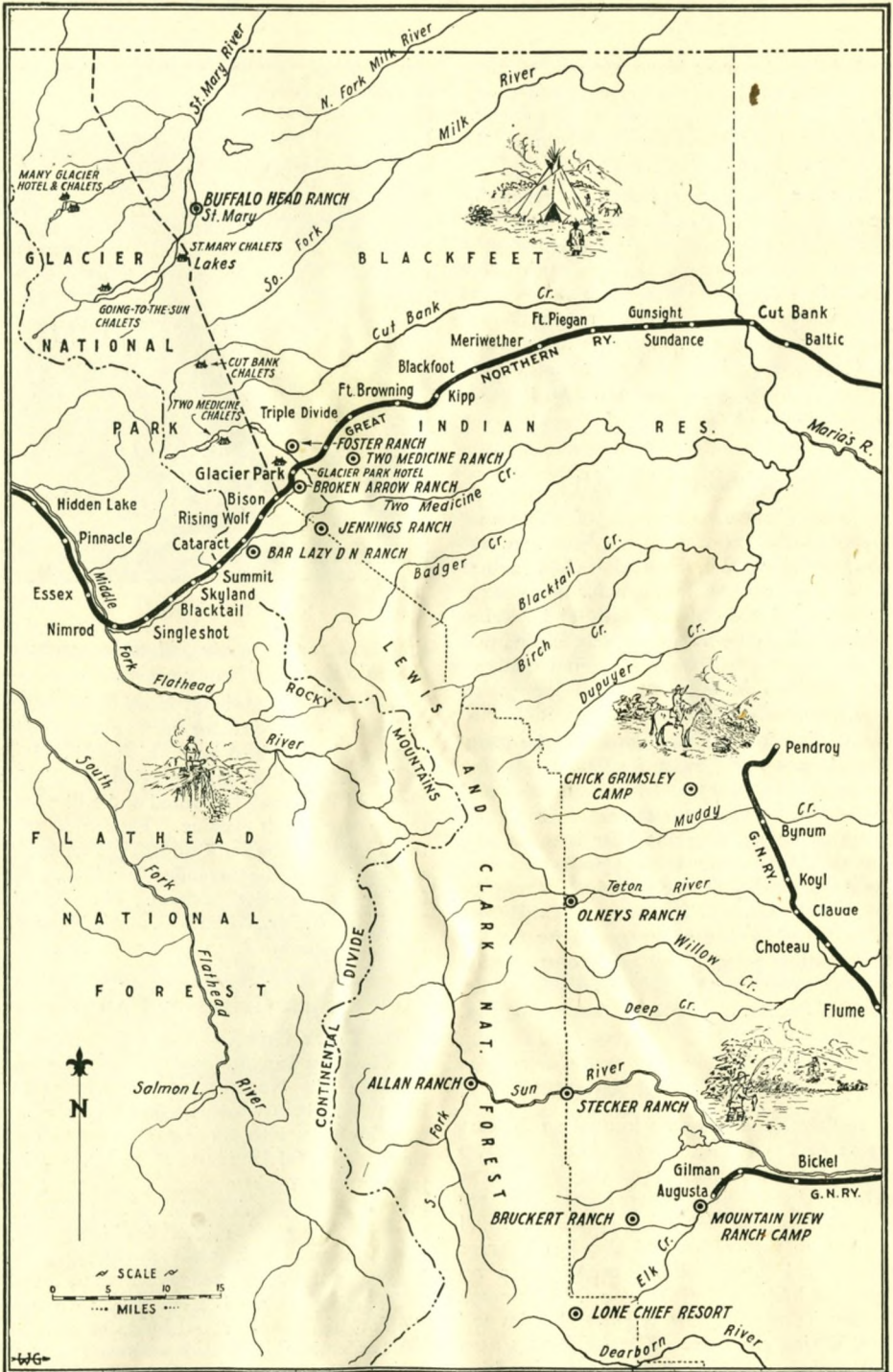
Hiking, riding, fishing, hunting in season and many other outdoor recreational activities may be indulged in at this ranch. It is so located that a large portion of Glacier National Park may be visited and still return to the ranch each evening. Pack train trips to all parts of the Park and to points to the south can also be arranged for here. For further information address, The Buffalo Head Ranch, Mr. William C. Gird, Manager, Babb, Montana.

### Chick Grimsley Camp

The Chick Grimsley Camp is located in the Blackleaf Canyon some twenty miles west of the Great Northern station of Bynum, Montana. It is used as a headquarters for camping trips into the mountains and over the Continental Divide to the west, and has tent and log cabin accommodations for the guests. The camping trips are at the discretion of the guest and they lead in all directions to innumerable scenic spots where there is wonderful hunting and fishing to be found.

The camp season is from May 10th until the first of December and for rates, reservations or further information address communications to Mr. Chick Grimsley, Bynum, Mont.





Map of East Glacier-Rocky Mountain Region



## Foster Ranch

(Diamond-Bar F)

The Foster Ranch comprises about 300 acres of rolling grazing land in the Blackfeet Reservation about four and one-half miles from Glacier Park station. The kitchen, eating cabin, corral, saddle shed, etc., are situated in a little basin, the sides of which are covered with cottonwoods, and around them are clustered the guest tents. These tents have sides about four feet high, wooden floors and contain sleeping provisions for two persons each. The food is plain but wholesome and adapted to the type of life lead at the ranch.

Every guest has his own horse and saddle, for which he is made responsible during the season. Boys take part in the roping and the branding of the new horses, under the supervision of Mr. Foster's sons, and on trips and on the ranch are expected to assist in the "wrangling" or gathering together of the stock. Trips are taken from the ranch into the surrounding mountains and range country. Boys in parties of five or six, guided by competent guides, go with pack-train into the mountains of Glacier National Park or north to Milk River. The season is from July 4th to September 1st and while the camp is intended primarily for boys, a few grownups can be accommodated. Tutoring in school and college subjects will be provided on advance notice. The ideal situation, careful supervision, combined with Mr. Foster's twenty-five years' experience with boys, make this a splendid place in which to combine the making up of school work

with western ranch life. For further information address, Mr. Charles R. Foster, University School, Cleveland, Ohio.

## Glacier Park Hotel Company

Glacier National Park is in reality a vast "dude" ranch—automobiles can only skirt along its outer edges or penetrate to the shores of its more important lakes, but its innermost secrets, the beauty of its skyline trails, lure of its glaciers and the appeal of its secluded valleys are open to the trail rider and hiker.

Located at the more important scenic spots throughout Glacier National Park the Glacier Park Hotel Company operates a series of hotels and chalets. These resorts, especially the chalet groups, while intended primarily for the convenience of the Park sightseers, have all the advantages of the "Dude Ranch" and make excellent places for an extended visit in this mountainous region. At all of the hotels and nearly all of the chalet groups, horses and guides may be obtained for short or long trips to all points in and adjacent to the Park. This phase of the Park service is handled by the Park Saddle Horse Company. (See page 36). Some of these resorts are on the west side of the Park but as a matter of convenience they are all listed here. These hotels and some of the chalet groups are open from June 15 to September 15, while the remainder open about July 1 and close during the first week in September. For further information address the Glacier Park Hotel Company, Great Northern Ry. Bldg., St. Paul, Minn., or during the Park season at Glacier Park, Mont.



*The Mountains of Glacier National Park from Lower St. Mary Lake*



**Glacier Park Hotel.** This hotel is located at Glacier Park station, the eastern entrance to Glacier National Park. It is electric lighted, steam heated and contains all the conveniences of a metropolitan hotel.

**Many Glacier Hotel.** This hotel is beautifully located on the east shore of McDermott Lake, 55 miles by auto road from Glacier Park station from which point there is daily bus service. It is of the same high standard as the Glacier Park Hotel.

**Prince of Wales Hotel.** This is a new hotel operated by the Canadian Rockies Hotel Company, a subsidiary of the Glacier Park Company, and of the same class as the Glacier Park Hotel. It will open early in the 1927 season. It is located on the Narrows of Waterton Lake and just over the International boundary in the adjoining Waterton Lakes National Park of Canada. Auto busses will make the trip from Glacier Park station.

**Two Medicine Chalets.** On the lower end of Two Medicine Lake commanding a view of the mountains and lakes of the Two Medicine country, reached by automobile, horseback or afoot from Glacier Park Hotel.

**Cut Bank Chalets.** Located in the Cut Bank valley 22 miles from the Glacier Park Hotel. The Cut Bank River is a favorite fishing stream.

**St. Mary Chalets.** Located on south shore near lower end of St. Mary Lake, 32 miles from Glacier Park Hotel. A popular fishing trip from this resort is to Red Eagle Lake 8 miles away.

**Going-to-the-Sun Chalets.** Located on the northwest shore of St. Mary Lake at foot of Going-to-the-Sun Mountain and commanding a view of the Continental Divide. They are reached by boat or trail from St. Mary Chalets.

**Many Glacier Chalets.** Located on northeast shore of Lake McDermott, one-eighth mile from Many Glacier Hotel and operated as a part of it, the Chalets furnishing only lodging.

**Granite Park Chalets.** Located on the west side of the Continental Divide 9 miles by trail from Many Glacier Hotel and in Granite Park. Reached only by horseback or afoot.

**Sperry Glacier Chalets.** Located in the Sperry Glacier Basin on the west side of the Continental Divide and nine miles from the head of Lake McDonald. Reached only by horseback or afoot from either Lake McDonald or Going-to-the-Sun Chalets.

## Jennings Ranch

Jennings Ranch, a spring and fall hunting camp and summer Dude Ranch, has accommodations for about fifteen guests. It is conveniently located six miles south of Glacier Park station on the shoulder of the main range of the Rocky Mountains at an elevation of 5,000 feet and comprises the proprietor's 160 acre homestead and 900 acres under lease. It is just at the eastern gateway of the famous Spotted Bear game country and convenient to the rolling hills and vast plains to the east, where jack rabbit and coyote hunting on horseback and good prairie chicken, duck and grouse shooting may be enjoyed in season. Guides, furnished by the ranch, take guests over innumerable wooded trails through the mountains and across the Continental Divide to the South Fork of the Flathead where large type trout, Cutthroat and Dolly Varden, are to be caught.

Guests are housed in log cabins and tent houses with bath house and toilets conveniently placed. An abundance of fresh milk, cream, eggs and chickens from the ranch's own herd and flock supply an unusual feature in the ranch dietary. Guests will be met at Glacier Park Station on advance notice. The season is, for hunting, May 1st to July 1st; September 15th to November 15th; summer, July 1st to October 1st. For further information address Mr. George H. Jennings, Glacier Park, Montana.

## Lone Chief Resort

The Lone Chief Resort is a three hundred acre "Dude Ranch" situated in Elk Creek Canyon about fourteen miles by auto road from the Great Northern station of Augusta, Montana. This resort has under development a mineral spring of excellent medicinal quality. There are at present accommodations for ten guests but more cabins are being built and in the near future quite a number more may be taken care of. The ranch raises



**The East Glacier  
Country**

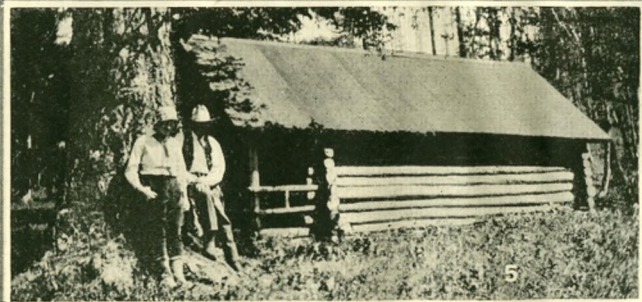
*1—Cabin at Broken Arrow Ranch.*

*2—A Party on the Trail.*

*3—Breaking a Wild One.*

*4—South Fork of the  
Two Medicine River.*

*5—At the Jennings  
Ranch.*





its own vegetables and berries as well as supplying its own cream, butter and eggs for the table.

There is excellent trout fishing in nearby streams and hunting for large and small game. Numerous trails lead in all directions into the mountains and guests can take short rides into the nearby hills or make more extended trips across the Continental Divide and north toward Glacier National Park. This resort is open from April 1st to November 15th and Mr. Fern Cooke, Box 38, Augusta, Montana, will be glad to furnish any further information desired.

### Mountain View Ranch Camp

#### Boys' Camp

The Mountain View Ranch Camp is located in the upper end of the Sun River valley about two miles from the town of Augusta, Montana, on the Great Northern Railway. It is an old established cattle ranch, one thousand acres in extent, and is situated at over four thousand feet above sea level. At the beginning of the season, which is for seven weeks starting about July 5th, the boys are brought to this ranch to learn to ride and get hardened up generally for the trips to the mountain camp sixty miles over the Continental Divide.

This trip is made by saddle horse, the camp outfit and supplies being brought in by pack train. From this inside camp, side trips will



*The Jennings Ranch*

be made to explore trout streams, lakes, caves and mountain peaks. College men who have had considerable experience in camp life and with boys will be in charge of different groups. For further information write Mr. H. B. Sallee, Mountain View Ranch Camp, Augusta, Montana.

### Olney's Ranch

The Olney ranch is located on the banks of the North Fork of the Teton River about twenty-five miles from the Great Northern station of Choteau, Montana, at which point guests will be met by the ranch people upon advance notice. It is used primarily as a base of operations for extended camping and pack-horse trips into the mountain regions directly west of the ranch, although there are accommodations for fifteen guests in tents and log cabins on the grounds. Mr. Olney will also guide parties starting from stations adjacent to Glacier National Park.

The North Fork of the Teton and many of the other nearby streams afford excellent trout fishing, and hunting for large and small game is to be had in season. The ranch is open from June to September, inclusive, and further information can be obtained from the proprietor, Mr. O. R. Olney, P. O. Box 372, Choteau, Montana.

### Rock Spring Ranch

Just to the north of Haro, Montana, on the main transcontinental line of the Great Northern Railway is the Rock Spring Ranch nestling among the hills that hem in the Milk River at this place. It has tent and log cabin accommodations for a large number of guests. The surrounding country is generally hilly with the Little Rocky Mountains a few miles to the east. In the Milk River and the streams adjacent to the ranch there is good fishing, while during the fall hunting season sage hens, grouse, rabbits, etc., are plentiful.

Horses and guides may be obtained at the ranch for short jaunts into the surrounding hills or if the guests so desire, longer trips to the Little Rockies and the Bear Paw Mountains may be made. Mr. E. S. Rich, Coburg, Montana, will be glad to furnish further information regarding rates, reservations, etc., upon application.

### Stecker Ranch

The Stecker Ranch, which is open from June 1st to November 15th, is located in the Sun River Canyon about twenty miles from the town of Augusta, Montana, on the Great



Northern Railway. The main ranch is used as a headquarters for parties making saddle and pack horse trips into the mountains, otherwise the two log cabins and two tent houses are rented for light housekeeping.

For the pack horse trips the ranch people furnish saddle and pack horses, tents and guides while the members of the party bring their own bedding and supplies. There are two main trips. The first is the Wood Creek trip into the mountains amongst game and beautiful alpine scenery to fine trout fishing streams. The second is to Salmon Lake, a sixty mile trip over the Continental Divide returning by a different trail. The scenery on this trip is wonderful and many wild animals such as elk, deer, mountain sheep and occasionally bear are to be seen. For further information and rates address Mr. W. H. Stecker, Stecker Ranch, Augusta, Montana.

### Two Medicine Ranch

Two Medicine Ranch is situated on the Two Medicine river, about four miles from Glacier Park Station. It is reached by automobile.

The ranch is equipped with modern water and sanitary systems. Wholesome food, good horses, and comfortable accommodations will make your vacation a success. Hunting and fishing trips into the Rocky Mountains are handled by skilled woodsmen. References exchanged.

For further information address Mr. Geo. T. Mollander, Glacier Park, Montana.

### Hughes and Conners

This concern specializes in pack horse camping trips into the Rocky Mountains to the south of Glacier National Park. During the summer months there is the best of fishing for Dolly Vardens, Cut Throat, Eastern Brook and Rainbow trout in this region; while in the fall there is hunting for bear, elk, deer and mountain lion. In the month of May the Silvertip bear is plentiful.

Hughes and Conners have fifty head of good, gentle, easy riding saddle horses available at all times and are prepared to supply complete equipment for camping or for hunting trips. All the guest needs to bring along is



*On the Trail*

his personal clothing, fishing tackle and guns. For further information regarding itinerary of trips, rates, reservations, etc., address Hughes and Conners, Glacier Park, Montana.

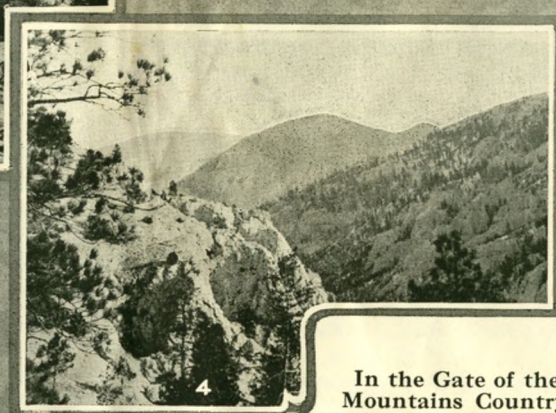
### Licensed Guides

Choteau, Montana, on the Great Northern Railway is the headquarters for a number of licensed guides who are equipped to take parties to any part of the Northwest Rockies, on fishing, hunting or just touring trips. These men provide the tents, horses, guides, food and cooks—in other words everything but the guests' personal belongings. Some of them have ranches that they use for headquarters where the prospective campers can remain for a while to harden up for the forthcoming pack-horse trip.

Either Choteau or Glacier Park station can be selected as the starting point for these trips which can be made at any time between the first of May and the middle of November. For further information address one of the following:

- Bill Black, Choteau, Montana.
- K. B. Cohoe, Choteau, Montana.
- Jess Gleason, Choteau, Montana.
- Lestrude and White, Box 231, Choteau, Montana.





**In the Gate of the  
Mountains Country**

*1—Camp Lincoln.*

*2—King's Pass Road near  
Neihart.*

*3—Broadwater Natatorium,  
Helena.*

*4—The Gate of the  
Mountains.*

*5—Spring Creek.*



# Gate-of-the-Mountains Country

The Gate-of-the-Mountains Country centering about Helena, Montana, includes the greater part of the Helena and Jefferson National Forests and that famous portion of the Missouri River known as the Gate of the Mountains where this great river, at this point a half a mile wide, cuts through the Rockies. Here one may ride by boat down the river for twenty-two miles with white cliffs and green mountains rising straight from the water to heights of 3,500 feet.

The main range of the Rocky Mountains forms the western boundary of this region while the Belt and Little Belt Mountains lie in the central and eastern sections, respectively. In their entirety they comprise some of the grandest scenery in central Montana being generally well timbered and interspersed with almost innumerable streams and waterfalls.

Seventy years ago this area was the scene of great activity—the gold seekers who had rushed to California in '49 gradually spread throughout the whole Rocky Mountain country. Gold was first discovered in Montana in 1852 but it wasn't until the fabulously rich deposits of Alder Gulch were unearthed in 1862 that the great rush for the Montana gold fields started. Outlaws and desperados of all kinds flocked to the workings on the heels of the miners and a period of lawlessness followed, ending in the hanging of one Henry Plummer and twenty of his gang by the Vigilantes.

Today in roaming through these mountains you will come upon ghost cities of the past—a group of tumbled down cabins that once was a thriving mining town with its saloon, gambling dens and dance halls. Here also, tucked away in some alluring canyon or perched high up on some mountain side, you will find prospect holes, abandoned shafts and other reminiscences of that adventurous period.

The Great Northern Railway has a number of lines extending throughout this territory—the Havre, Helena, Butte line crossing it from the northeast to the southwest; the Great Falls, Billings line running in a southeasterly direction and the Neihart and Lewistown branches entering the northeastern portions. Convenient connections are made by trains on these lines with trains on the main transcontinental line and in nearly all instances guests will be met at the train by the resort people.



### Alhambra Hot Springs

At the mouth of Warm Springs Canyon and on the banks of Prickly Pear Creek lies Alhambra Hot Springs Hotel, with the Elkhorn Range of the Rockies rising in the background. It is a Colonial style frame building, accommodating 75 guests and equipped with all modern conveniences. Water from natural hot springs is piped into the hotel for heating, drinking and bathing purposes. These waters are highly mineralized and possess exceptional curative qualities. Adjoining the hotel are tennis courts, a nine-hole golf course, croquet grounds, facilities for trap shooting and in the surrounding hills are fishing streams and numerous trails for either walking or horseback riding.

### Boulder Hot Springs

In the Boulder Valley, some three miles from Boulder, Montana, on the Havre-Butte line of the Great Northern Railway is the Boulder Hot Springs resort. These hot springs are noted for their medicinal qualities and the hotel, a modern up-to-date building, is equipped to give natural hot water and vapor baths from these springs. The hotel provides a milk diet of which it makes a specialty.

The surrounding hills and rugged mountains offer many opportunities for hiking and horseback riding and horses may be rented at the hotel, a charge of fifty cents an hour being made. In the Boulder River, within walking distance from the hotel grounds, there is good fishing to be found. This resort is open during



*A Hunting Party in the Jefferson National Forest*

Eight miles back in the hills, the hotel people maintain a ranch of 1,500 acres, with cabin accommodations for 25 guests. These can be reached from the main hotel either by auto, wagon or horseback. From here many points of interest may easily be reached, such as an ice cave, beaver dams, active and long deserted mining camps, and huckleberry camps, besides the longer trips into the mountains. Not less than six persons constitute a party and trips are planned ahead for this camp.

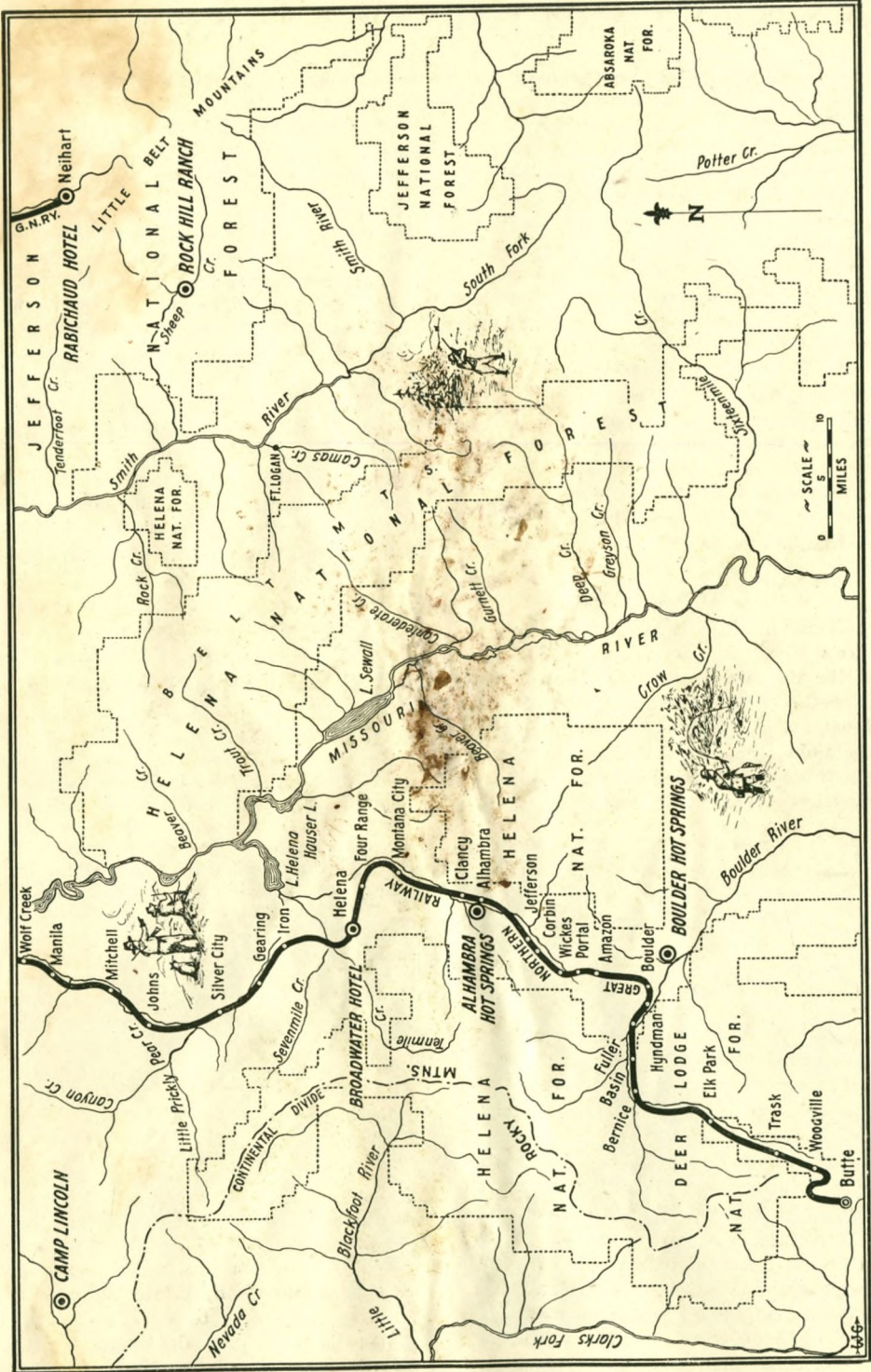
The main hotel of this resort is only a hundred yards from the Great Northern station of Alhambra, Montana. Additional information and rates may be obtained upon application to the proprietor, Mr. M. J. Sullivan, Alhambra, Montana.

the entire year and the hotel bus meets all trains at Boulder. For further information address the Manager, Boulder Hot Springs, Boulder, Montana.

### Broadwater Hotel

The Broadwater Hotel is located on the banks of Ten Mile Creek on the outskirts of Helena, Montana. It is a large, roomy hotel with all the comforts and conveniences of the largest resorts. In connection with the hotel is maintained the celebrated Broadwater Natatorium—one of the world's largest covered pools. It is fed by natural hot and cold springs of soft pure water. An excellent tent-cottage camp is operated by the hotel company on grounds adjacent to the main build-





Map of Gate-of-the-Mountains Country

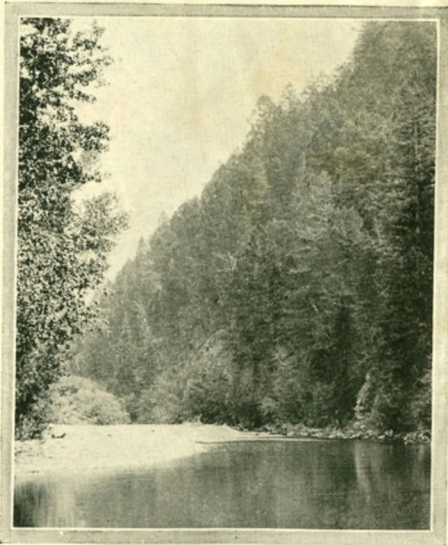


ing. Each tent-cottage has running hot and cold water and the camp has its own dining room.

The hotel is in the center of a vast playground region. Ten miles to the west is the Continental Divide of the Rockies and a short distance away is the Gate of the Mountains, where the great Missouri River, a half a mile wide, cuts through the Rockies and one may ride by boat down the river 22 miles with white cliffs and green mountains rising straight from the water to heights of 3500 feet. There are numerous horseback trips into the Helena National Forest and guests have full privileges on the fine course of the Helena Country Club. The season lasts from June to September, inclusive. For reservations, rates, etc., address Mr. O. L. Anderson, Manager, The Broadwater Hotel Company, Helena, Montana.

### Camp Lincoln

Camp Lincoln is situated in the main range of the Rocky Mountains on the headwaters of the Big Blackfoot River about 38 miles from the Great Northern station of Silver, Montana. It consists of a large frame hotel, containing the central dining room and 25 guest rooms, and 15 log and frame cabins all electrically lighted. It also has a large mer-



*Blackfoot River near Lincoln, Mont.*

cantile store and one of the finest dance pavilions in the state.

The adjacent country is one of the scenic spots of the state with the giant yellow pines surrounding the whole valley of the Blackfoot River and the rugged peaks of the Rockies rising directly to the west. Here also there is to be found excellent fishing for trout during the summer months and hunting for large and small game in the fall. At this camp arrangements can be made for saddle and pack horse trips that take you into all parts of the northwest Rockies, one of the longest trips, for instance, being from Lincoln to Belton, the western entrance to Glacier National Park, a distance of 200 miles along the backbone of the continent. This camp is open from June 1st to November and accommodates 150 guests. Trains will be met at Silver, Mont., upon advance notice. The proprietor, L. J. Lambkin, Camp Lincoln, Lincoln, Montana, will be glad to furnish further information upon application.

### Curley Dunlap's Dude Ranch

In the heart of the Snowy Mountains near Half Moon Pass and some eighteen miles southeast of Lewistown, Montana, on the Great Northern Railway is Curley Dunlap's Dude Ranch, an old cattle ranch with accommodations for about fifteen guests. There is a large ranch cabin that is used for dining and recreation purposes, while the guests are housed in small cabins and tents. Saddle horses and guides are available at a reasonable cost for trips to Crystal Lake, near the top of the Snowy Mountains and other points of interest. For the fisherman there is the North Fork of Flatwillow Creek nearby, noted for its trout fishing, and during the fall season there is hunting for large and small game.

A feature of this ranch is the rodeo held each Sunday when cowboys from "all the country round" gather there to test their skill in roping, riding and other feats of the range. This place is open from June 1st to November 1st. For rates and additional information address Mr. Curley Dunlap, Lewistown, Mont.

### Lone Wolf Ranch

Lone Wolf Ranch is situated in a beautiful basin at the foot of the Pryor Mountains and on Little Pryor River. The ranch comprises



five thousand acres, of hills, valleys and mountains. The ranch building has a large dining room filled with rare specimens of the old western life. Fresh meats, dairy products, fruits and vegetables are provided for the dining room. Guests are housed in new log cabins. Bathing facilities are of the best. Pure spring water, large shade trees, under which there are comfortable seats and hammocks, make this an ideal place to rest.

There are first class saddle horses and a competent man to teach you to ride. There are many trips to canyons and caves, as yet visited by comparatively few white men.

Every two weeks Indians come to the ranch and put on a sports program to amuse the guests. There are also two or three big dances through the season with the best of music. The Lone Wolf Ranch is forty-five miles south of Billings, Montana, on the Great Northern Railway and guests will be met there on advance notice. The season is from May 15th to November 1st. For further information address Mrs. Charles Phelps, Box 25, Pryor, Montana.

### Rabichaud Hotel

Just a few minutes' walk from the Great Northern station at Neihart, Montana, is the Rabichaud Hotel with accommodations for about 25 guests. It is a modern little hotel with steam heat, electric lights and running water in all bedrooms.

This spot lies in the heart of the Belt Mountains whose streams, many of which are only a short distance from the hotel, abound with trout and whose hills afford excellent opportunity for the hunting of grouse, ducks and deer in season. It is also a wonderful spot for persons suffering from hay fever. For further information address Mrs. J. Rabichaud, Neihart, Montana.

### Rock Hill Ranch

After a ride of some fifteen miles through the Little Belt Mountains from the station of Neihart, Montana, on the Great Northern Railway, you come to the Rock Hill Ranch with accommodations for 20 guests, who are lodged either in the main building, a large log house equipped with bath and electric lights, or in the adjoining log cabins. On the ranch grounds there are facilities for tennis, and target shooting, as well as dancing in the evening.

Guests should bring their fishing tackle for while there are no lakes nearby there is good fishing in Sheep Creek, which runs through the grounds, and in Moose, Butte and Newlan streams which are only a short distance away. Hunting is good in the fall. Horses can be obtained at the ranch and there are many trails leading to points of interest in the nearby mountains. The season is from June 15th to October 1st. For further information inquire of the ranch owner, Mr. Charles Dreibelbis, Barzee, Montana.



*Recreation Room of Lone Wolf Ranch*





**Flathead Lake**

*1—Hiawatha Lodge.*

*2—The Narrows, Flathead Lake.*

*3—Sunset on Flathead Lake.*

*4—Camp Flathead.*

*5—Echo Lake.*





# Flathead Lake Country

Flathead Lake, the largest body of fresh water in the western part of the United States, lies in a region of unsurpassed grandeur. Forests, lakes, valleys, mountains, streams and waterfalls abound on every side. To the west are the serried peaks of the Cabinet Range while directly to the east rise the rugged outlines of the Mission Range, one of America's most beautiful mountain chains, a district that is often compared to the Alps by world travelers.

The lake was first visited by white men in the early years of the nineteenth century, the fur traders of the Northwest and Hudson's Bay Companies building trading posts in the vicinity. One of the first men to gaze upon its waters was that great explorer-geographer, David Thompson, who reached the lower end of the lake after a journey up the Clark's Fork and Flathead Rivers in 1812. In the years that followed the adjacent mountain ranges became a favorite hunting ground for the free trappers or mountain men.

Three National Forests are included in this area; Flathead National Forest to the East, Blackfeet National Forest to the north, and Cabinet National Forest to the west, while to the south near Dixon is a large tract of land set aside as a National Buffalo Reserve, where one of the very few remaining herds of these animals is to be seen.

Almost innumerable trails beckon to the hiker or rider, some leading to crystal clear little lakes securely hidden in the thickly forested valleys, some following the wanderings of picturesque mountain streams and others climbing upward towards the high passes where magnificent views of the whole area can be seen. To the fisherman there are the lakes and streams with their varied collection of trout, bass and land-locked salmon. To the hunter the national forest areas are noted for the quantity and variety of the game to be shot during the hunting season. For the person desiring rest and relaxation the quiet lodges and camps are ideal.

Kalispell is located in the northern part of this area and is its chief city. It is served by a branch line of the Great Northern Railway extending south from Columbia Falls on the main transcontinental line. From Kalispell are two further extensions of this branch, one south to Somers at the upper end of Flathead Lake and the other west to Marion. From these three points there is bus and mail auto stage service that will take you either directly to the resorts or to points where you will be met by the resort people.



### Binko Recreation Ranch

At the Binko Ranch, located in the heart of the Rockies some 70 miles by auto stage south of Kalispell on the Great Northern Railway and surrounded by a score of lakes and tumbling streams, you will find a large rustic, log ranch house with spacious dining hall and assembly, and seven artistically furnished log cabins, with screened sleeping porches. The ranch is completely equipped with all modern conveniences such as shower baths, etc.

Each guest is supplied with a horse upon arrival at the camp, to carry him over the numerous mountain trails that go winding up towards the sky. Fishermen find excellent trout fishing at Binko Ranch, for the ranch has its own private lakes stocked from its own hatchery, while many other famous fishing lakes and streams are to be found nearby. In season there is hunting for elk, deer, bear and for many varieties of small game.

Horseback riding, fishing, dancing, swimming and boating are daily sports that whet the appetite for the best of home-cooked foods. The menu is enhanced by an abundance of fresh cream, butter, eggs, poultry, garden products, huckleberries and trout. For further information address Mr. W. E. Binko, Clearwater, Mont.

### Bosworth's Cabins

Some forty miles by auto stage from the Great Northern station at Kalispell, Montana, and on the shores of Swan Lake are the Bosworth Cabins with accommodations for twenty-five people. These cabins are completely furnished for light housekeeping, including bedding and table dishes. Each cabin has a screened porch. A common cold storage room is furnished for the use of all the cabins as well as wood, light and a row boat for each cabin. Water is piped to within a few feet of

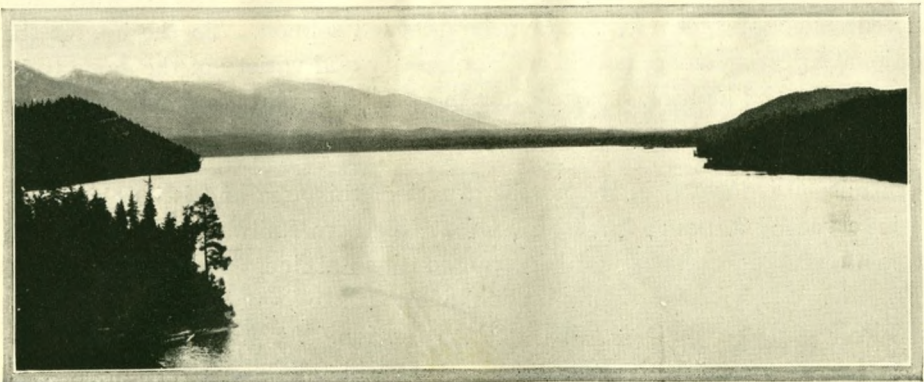
each cabin. Groceries, ice, fresh vegetables and dairy products may be obtained daily at reasonable prices.

Green lawns and shade trees environ the cabins which are situated only a few feet from the beach, where there is excellent bathing in the clear shallow waters of Swan Lake. There is excellent fishing nearby and during the season hunting for deer, bear, mountain lions and small game in the adjacent hills. Horses can be hired for \$1.00 per day. The season is from May to November and detailed information will be gladly sent to any one interested by addressing Mr. Frank Bosworth, Swan Lake, Montana.

### Camas Hot Springs

The Camas Hot Springs are located at Hot Springs, Montana, some sixty miles south of the Great Northern station of Kalispell, Montana, from which point they can be reached by an auto stage line. These springs are owned by the Flathead Indians, under the supervision of the U. S. Indian Department, and are operated by A. E. Hurst, Lessee, who has made numerous improvements including a bath house equipped with sanitary bath tubs, showers, sweat rooms and dressing rooms. There are also three natural hot mineralized mud baths with small plunges and a standard concrete swimming pool. These springs are considered very beneficial in curing a number of ailments.

Three modern steam heated and electric lighted hotels and a number of furnished cottages and cabins are available at very reasonable rates for those who desire to remain at this place, which is open the year around. All communications requesting further information should be addressed to Mr. A. E. Hurst, Lessee, Hot Springs, Montana.



*Swan Lake from Bosworth's Cabins*



### Camp Flathead

On the west shore of Flathead Lake about two and one-half miles from the Great Northern station at Somers, Montana, is Camp Flathead consisting of fourteen furnished cabins and an artistic eight-room bungalow. A community kitchen is located close to the cabins and they can be rented separately for light housekeeping if desired, food supplies being obtainable at the main camp and in Somers. The bungalow has a large living room with fireplace and is furnished with a piano, phonograph and other amusement features.

A motor boat and a number of row boats are part of the camp equipment and for the swimmer there is a diving ladder and a spring board on the camp dock. The surrounding country is mountainous and affords many opportunities for hiking and horseback riding. Fishing and hunting in season are also to be indulged in. For further information address Mrs. J. J. Macdonald, Camp Flathead, Somers, Montana.

### Camp Tuffit

A ride of some thirty miles by auto-stage from the Great Northern station at Somers, Montana, brings you to lovely Lake Mary, Ronan and Camp Tuffit. This camp has accommodations for over three hundred guests, and consists of a large centrally located hotel and a number of small log cabins. Some of the cabins can be rented for light housekeeping and supplies can be obtained at the camp store. The camp buildings are all constructed from local materials and harmonize nicely with the virgin forests which surround them.

Lake Ronan is considered one of the best fishing lakes in Montana, seven varieties of game fish being found in its confines. Swimming, rowing and motorboating are other sports that can be indulged in on its waters. For hiking and horseback riding there are many trails that lead around the lake and into the mountains. The camp season is from May 21st until the last of November and the manager, Mr. C. H. Thomas, Proctor, Montana, will gladly supply any further information upon request.

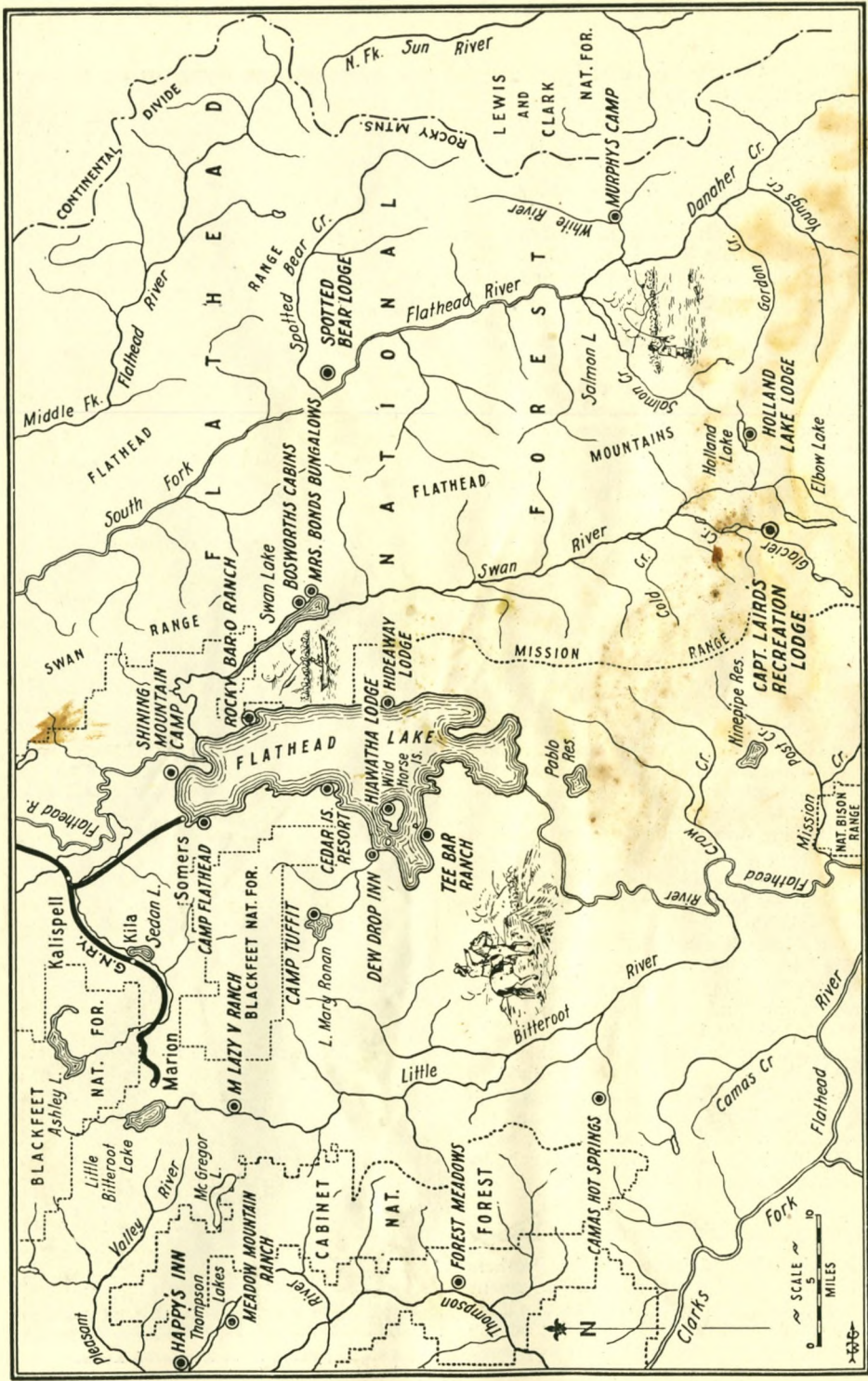
### Captain Laird's Recreation Lodge

Captain Laird and the Stonebraker Brothers of Idaho are now establishing a permanent camp consisting of ten tent cabins and a large recreational headquarters building on the shores of Elbow Lake in the Glacier Creek



*A Riding Party from Hiawatha Lodge*





Map of Flathead Lake Country



Country near the lower end of the Flathead National Forest. This region is famous for the ruggedness of its mountain scenery, its lakes, waterfalls and glaciers, and the excellence of its trout fishing.

Pack horse camping trips into the surrounding mountains will be made from this camp, and a large herd of horses and pack mules will be kept at the camp for the accommodation of the guests. The lodge may be reached by auto stage from Kalispell, and for further information, rates, reservations, etc., address Captain Eli Laird, Coeur d'Alene, Idaho.

### Cedar Island Resort

The Cedar Island Resort is at Cedar Island on the west shore of Flathead Lake about two miles from Rollins, Montana. Daily auto-stage service is maintained between this point and Somers, Montana, on the Great Northern Railway and here the guests will be met by the hotel boat. The resort consists of a main building, where there is an attractive dining room and a number of sleeping rooms, a smaller log cabin and a number of tents.

Guests should bring their fishing tackle as there is good fishing in the nearby streams and also in Flathead Lake during the cooler seasons. In the fall season there is hunting for deer and grouse. For the athletically inclined there is hiking, horseback riding and mountain climbing and on the lake rowing, motorboating, swimming and many other water sports. The camp season is from June 15th to September 1st and the proprietress, Mrs. W. S. Jelleff, Rollins, Montana, will gladly furnish any further information desired upon request.

### Dew Drop Inn

Overlooking Flathead Lake at Dayton, Montana, is the Dew Drop Inn run by Mrs. E. P. Lawrence. It is a comfortable little hotel with accommodations for from twelve to fifteen guests and is reached by auto-bus from either Kalispell or Somers on the Great Northern Railway.

There are many and varied recreational activities to be indulged in, in and around this place. Bathing, rowing, motor-boating and fishing are to be found here, either on Flathead Lake or on one of the numerous other Lakes and streams nearby. Horses can be obtained for those who wish to ride among the hills and mountains while in season there is hunting for large and small game. Further information about this resort can be obtained from the proprietress by writing to Dayton, Montana.

### Forest Meadows

Forest Meadows has a quiet, homelike atmosphere. It consists of comfortable cabins and tent houses so situated as to give privacy to each party, the cabins and tents not being laid out in street formation but each one in a shady and beautiful spot. The dining room and kitchen are in a centrally located log cabin and the best foods obtainable are served. This camp has accommodations for twenty people and is located on the Thompson River forty-four miles from the Great Northern station at Marion, Montana, where guests will be met upon advance notice.

There are many opportunities for boating, fishing, swimming, tennis, hiking and riding in and around the camp, one especially popu-



A Row of Cabins at Happy's Inn



lar trip being to Bear Creek Falls one mile away. During the open season there is also excellent hunting for bear, deer and grouse. The camp season is from June 10th to November 15th and further information can be obtained by writing to the owner, Mr. Victor Stobie, Forest Meadows, Plains, Montana.

### Happy's Inn

Happy's Inn is located on the National Parks Highway about 28 miles from the Great Northern station at Marion, Montana, from which point it can be reached by an auto stage which makes the trip every Tuesday and Friday. It consists of a number of small log cabins providing sleeping quarters for about fifty people and a larger cabin which contains the lobby, store, dining room and kitchen.

In the country immediately adjacent to the Inn is a chain of thirteen lakes, all well stocked with many varieties of trout and also providing excellent swimming and boating. A good nine-hole golf course is a feature of this place. There is a dance pavilion and saddle horses can be obtained by those desiring to ride along one of the many trails leading in and out among the mountains. The season is from May 1st to November 1st, which takes in the deer hunting season. For rates and further information, address Happy's Inn, F. J. Townsend, Prop., Box 471, Libby, Montana.

### Hiawatha Lodge

This charming ranch is on Wild Horse Island in Flathead Lake, an island with sixteen miles of shoreline and surrounded by smaller islands. It can be reached directly by boat from Somers on the Great Northern Railway, or by bus from Kalispell to Dayton and then by launch to the island. The lodges are on the northeast shore of the island and the rooms are plainly but cozily furnished. Baths, showers and toilets are not attached to the rooms but are conveniently located about the grounds. Vegetables in season are supplied from the farms and surrounding gardens, milk and cream in liberal quantities by the ranch dairy and the selection of supplies is made with the thought of purity and quality. The whole effect is to provide wholesome, homestyle meals, served nicely in a bright cool dining room.

Horseback riding, hiking, motoring, mountain climbing, fishing, rowing, swimming, launching, tennis, croquet, boxing, a spin to Kalispell for golf and camera shooting are available for the actively inclined; and for all

the enjoyment of the many wonderful scenes with their changing lights and shadows. Clara I. Edgington, Dayton, Montana, is the owner and manager of Hiawatha Lodge and will be glad to furnish rates and further information upon request.

### Hideaway Lodge

The Hideaway Lodge, on the east shore of Flathead Lake some forty odd miles from the Great Northern station at Somers, Montana, offers accommodations for twelve guests in log cabins and tents. It is picturesquely located with the rugged outline of the Mission Range rising directly to the east while to the west are the sparkling waters of Flathead Lake and beyond them the mountains of the Cabinet Range.

Swimming, fishing, boating and other aquatic sports are to be indulged in in the waters of Flathead Lake, while many trails lead to points of interest on the lower slopes of the Mission Range. The Big Fork River twenty miles away is a famous fishing stream and in the fall there is hunting for bear, deer and small game. The camp is open from June 15th until the last of October. For further information regarding rates, reservations and transportation arrangements address the proprietress Mrs. R. Dee, Polson, Montana.

### Holland Lake Lodge

Holland Lake Lodge is on the shores of Holland Lake in the Swan River Valley between the lofty, snow-capped Kootenai and Mission Ranges of the Rockies. The latter, often called the most scenic in the United States and by some travelers as comparable to the Alps, lie to the west, while Holland Lake rests right at the foot of the Kootenais. A picturesque mountain fall, feeding Holland Lake, is close to the lodge. The lodge consists of a large centrally located building and a number of smaller cottages and has accommodations for 50 guests.

Deer, elk, bear (black and silver-tip), goat and mountain sheep are to be found hereabouts while fishing in the South Fork Valley is very good. This valley is reached via Gordon Pass, which starts its climb over the Kootenai Range almost at the camp door. From the top of this pass there can be seen 17 mountain lakes nestling in the surrounding virgin forests. There are also several other excellent fishing streams nearby. The lodge is open from June 1st to November 15th and can be reached by auto stage from Kalispell, Montana, on the Great Northern Railway. Further information can be obtained from White and Wilhelm, Seeley Lake, Montana.



**In the Flathead  
Valley**

*1—Holland Lake Lodge.*

*2—The M. Lazy V.  
Ranch.*

*3—Camp Tuffit on Lake  
Ronan.*

*4—Lake LaVemme, near  
Happy's Inn.*

*5—Canyon near M. Lazy  
V. Ranch.*





### Meadow Mountain Ranch

The Meadow Mountain Ranch is located on the shores of the Middle and Lower Thompson Lakes, 28 miles from the Great Northern station at Marion, Montana, from which point it can be reached by automobile. The camp is principally for those who bring their own outfits but the management expects to have a number of log cabins completed in time for the 1927 season which is from May 1st to November 1st.

The Thompson Lakes are six miles long and less than a mile in width and are safe for boating at all times. The ranch has a fleet of safe, well built boats for rent. Fishing is good and guests should bring their own tackle. In the fall there is hunting for White Tail and Mule Deer, Bear, Lion and small game. At this ranch there are also opportunities for trap-shooting, hiking and mountain climbing. Miss Clara B. Howell is the owner and Mr. Lloyd A. Bower, Meadow Mountain Ranch, Yakt Post Office via Marion, Montana, is the manager and to him should be addressed all requests for further information.

### M. Lazy V. Ranch

The M. Lazy V. Ranch is a real cattle ranch situated in the heart of the Rockies some fifty miles southwest of Glacier National Park. Here, where the cattle graze in the open pine forests, you can have a horse of your own and can ride him in any direction through the woods with little underbrush to bar your way. Within five miles of camp are many lakes and streams all well stocked with fish and a half a mile away is a canyon where the water falls 150 feet to the rocks beneath you. You can take your horse and ride to the top of a deep gorge half an hour away and look a thousand feet down into a deep, dark lake and out fifty miles over the tops of the Bitter Root Mountains. You can climb the hills or ride the trails and come home to a warm bath and a cool shower. You will find an equally warm welcome from people who seek to make your stay a pleasure to you and to them.

Individual log cabins of from one to three rooms are used to house the guests, while the dining and recreation rooms are located in a large, centrally located building. Bath houses with showers and tubs are conveniently close to the cabins. The ranch may be reached either from Marion or Kalispell on the Great Northern Railway. For reservations, rates, transportation arrangements and other information, communicate with Mrs. A. M. Moore, M-Lazy-V Ranch, Marion, Montana.

### Mrs. Bond's Bungalows

Mrs. Bond's Bungalows are a group of four-room log cabins located at the head of Swan Lake, forty odd miles from the Great Northern station of Kalispell, Montana, from which point they can be reached by auto mail stage. These bungalows are rented completely furnished for light housekeeping and the camp season is from the first of June until late in the fall.

Swan Lake is situated partly in the Flathead National Forest and is nine miles long and about three miles wide at its point of greatest breadth. The surrounding country is mountainous and in the numerous streams that empty into the lake there is excellent fishing for trout. In the fall there is hunting for large and small game. For rates, reservations or additional information, address Mrs. E. C. Bond, Swan Lake, Montana.

### Murphy's Camp

This camp is maintained as a headquarters post for pack-horse camping trips through the Montana Rockies in search of the best fishing, hunting and scenery. It is located at the mouth of the White River on the South Fork of the Flathead about ninety miles south of the Great Northern station of Citadel and can accommodate twenty-five guests in log cabins and tents.

Guests should bring fishing tackle, as the country abounds with good trout streams and Salmon Lake is only three miles away, where boating and swimming are available as well as fishing. The season is from June 15th to November 15th. For information regarding rates, reservations and transportation arrangements to and from the camp, write Jos. B. Murphy, Ovando, Montana.

### Rocky Bar O Ranch

At the head of Woods Bay on the east shore of Flathead Lake some 30 miles by auto from Kalispell on the Great Northern Railway is the Rocky Bar O Ranch, one of the newer "Dude Ranches" in this region. It has at present accommodations in picturesque log cabins for six guests but the camp facilities are rapidly being enlarged so that it will eventually take care of 25 or 30 people.

Horses and guides are available at the camp for short or long trips into the surrounding mountains and for the fisherman there are the secluded bays of Flathead Lake and the trout-laden Forks of the Flathead, the Swan



River and many smaller streams. The camp season is from June to September, inclusive, and for further information, transportation arrangements from Kalispell, etc., address Mr. R. V. Jennison, Big Fork, Mont.

### Shining Mountain Camp

A Dude Ranch for Girls

Shining Mountain Camp is a "dude ranch" for girls of high school and college age. It is located on Flathead Lake, adjacent to the



A "Dudette" at Shining Mountain Camp

western entrance to Glacier National Park. Upon reaching camp each girl is provided with a western saddle horse and riding equipment which she keeps during the camp period. There is a wealth of old game trails in the mountainous regions surrounding the camp and daily trips are taken on horseback. The camp program is a flexible one, some days are spent lounging in and around camp or swimming in the cool, clear waters of the mountain lake.

The last week, the girls are taken on an extensive horseback trip through Glacier National Park. Starting at Lake McDonald, the western entrance, the following places are visited: Glacier Chalet, Granite Park, Going-to-the-Sun, Many Glacier, Iceberg Lake and Glacier Park Hotel at the eastern entrance.

Only a limited number of girls are taken at Shining Mountain Camp. They are carefully chaperoned at all times and are under the supervision of experienced guides. The

camp is reached by auto or boat from the Great Northern station of Somers, Montana, and the season is for six weeks beginning July 1. For further information, booklets, references and fees, address, Florence Rogers Cassill, 6022 25th N. E., Seattle, Washington.

### Spotted Bear Lodge

The Spotted Bear Lodge is located in the heart of the Flathead National Forest and also within the limits of the Spotted Bear Game Preserve, about 76 miles east of Kalispell and 60 miles south of Belton. It can be reached from either of these Great Northern stations by automobile and the guests will be met at these points by the lodge people upon advance notice.

Saddle horses and guides are available at this camp and the forest reserve abounds in well marked trails. Wonderful fishing is to be had in the South Fork of the Flathead and the many smaller streams around this resort, while in season there is hunting for big game nearby. Wild animal life is plentiful in this game preserve and this combined with the rugged mountain scenery makes this region a paradise for the camera hunters. For further information address Mr. Guy Clatterback, Kalispell, Montana.

### Tee Bar Ranch

The Tee Bar Ranch is beautifully situated on a high bench of land some 25 miles from the Great Northern station at Somers, Montana, and is reached from that point by auto stage to Big Arm where guests will be met by ranch automobile. To accommodate the guests on the ranch, there are 18 log cabins with room for from 2 to 4 persons per cabin. The main building contains the kitchen and dining rooms and the table is bountifully supplied with all kinds of fresh vegetables and small fruits from the ranch gardens, while the dairy furnishes plenty of fresh milk, cream and butter.

The life on this ranch is interesting, giving one the opportunity to learn to ride, to camp out, to go to the different cattle and horse roundups, and to see the work of the cowboys. There are also hiking and horseback trails to follow, water sports on Flathead Lake, fishing in the various lakes and streams and hunting for large and small game in season. A special pack train trip can be made from this point to the National Buffalo Range at Dixon, Montana. The ranch season is from June 1st to November 30th. Further information will be supplied upon request to the proprietors, Hilaire Ledoux, Carl Davis and Dannie J. Longpre, The Tee Bar Ranch, Big Arm, Montana.





**West Glacier  
Country**

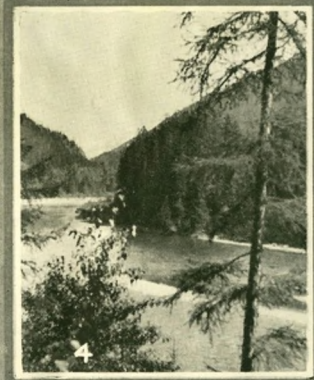
*1—Kintla Lake, Glacier  
National Park.*

*2—Rest Haven on White-  
fish Lake.*

*3—Whitefish Lake.*

*4—North Fork, Flathead  
River.*

*5—Appar's Cabin Resort.*





## West Glacier Country

The West Glacier Country, as its name implies, embraces that part of Glacier National Park lying west of the main range of the Rocky Mountains and a large portion of the adjoining Blackfeet and Flathead National Forests. It is a country of rare scenic beauty, heavily timbered and with a number of large lakes nestling at the foot of peaks that tower a mile and more further into the sky, and on whose upper slopes may be found large snow fields and numerous glaciers. It is a region that has not been developed to the extent obtained on the eastern side of the Park but a number of comfortable ranches and camps afford accommodations to those desiring to spend their vacation in this region.

Practically the entire region is included either in a National Park or National Forest and is interspersed with highways and trails that are maintained by the government. Fishing is excellent in practically all the lakes and larger streams throughout this country and while hunting is forbidden in Glacier National Park the National Forest areas are famous as being among the last stands of big game in the United States. Horseback and camping trips are another specialty of this region, nearly every resort being able to supply horses, camping equipment and efficient guides.

Whitefish Lake, located near the western side of this area, is a beautiful mountain lake hemmed in by mountains of the Whitefish Range and is well known as a resort lake, a number of cottage camps being located on its shores.

Many historic figures passed through this region during the first part of the nineteenth century. The fur traders, particularly the members of the Northwest and Hudson's Bay Companies, penetrated this area to trade with the Kootenai and Flathead tribes. Later members of the Isaac Stevens party, exploring and surveying for a route for a transcontinental railroad, crossed through this region searching for Marias Pass, which, by the way, was not explored until many years later when John F. Stevens accomplished the feat in the winter of 1889 while routing the Great Northern through the Rockies.

All of the resorts in this region are accessible, either by ranch automobile or bus line, from stations on the main transcontinental line of the Great Northern Railway.



### **Appgar's Cabin Resort**

Appgar's Cabin Resort consists of eight small log cabins of two and three rooms each, which are equipped for light housekeeping. They are located at the foot of Lake McDonald in the western side of Glacier National Park and close to the main auto road that runs from Belton into the park. Daily bus service is maintained on this road, making the cabins easily accessible from the Great Northern station at Belton. Close to the camp is the post office with daily mail service and just across the road is a mercantile store where fresh milk, vegetables, fruit and staple supplies can be obtained.

Hunting is not allowed in the park but in Lake McDonald and in the Flathead River, a short distance away, there is excellent fishing for trout and bass. Many trails lead to points of interest on the west side of the Park and horses are available at moderate rates. The camp is open for three months, beginning the 15th of June and for further information, address Mr. H. W. Hutchings, Belton, Montana.

### **Glenwood Park**

On the shores of Whitefish Lake, a beautiful mountain lake one mile wide and seven miles long, and about one mile from the Great Northern station at Whitefish, Montana, is the Glenwood Park with cottage accommodations for about 75 guests. These cottages are built with enclosed sleeping porches and are equipped with electric lights and running water. They are rented for light housekeeping and supplies may be obtained in Whitefish, the stores making deliveries to the camp.

Fishing is very good in Whitefish Lake and also in the many streams and rivers nearby. In the fall there is hunting for large and small game. The camp faces on a shallow sandy beach that is equipped with a diving tower, toboggan chute and bath houses and has an attendant in charge at all times. There are many trails leading in all directions from this camp and long trips to points of interest and scenic beauty can be arranged for with the proprietor. This camp is open from June to September, inclusive, and further information can be obtained from Mr. R. T. George, P. O. Box 442, Whitefish, Montana.

### **Kelly's Camp**

Kelly's Camp is located on the west shore and near the head of Lake McDonald in Glacier National Park. It is reached from

the Great Northern station at Belton by auto bus to the lower end of the lake and then by motor boat to the camp dock. The camp consists of eight cottages, one of which is quite large, furnished for light housekeeping, including wood and electricity, and with spring water piped to each. There is a good store nearby where all kinds of provisions may be purchased.

Arrangements can be made with guides and the Park Saddle Horse Company for trips to all parts of the park. Fishing is excellent in the nearby lakes and streams. There are also a number of short trips to points of interest that can be made either on foot or on horseback. The camp season is from June 1st to November 1st and further information may be obtained by writing to Mr. Frank Kelly, Belton, Montana, or to Lake McDonald during this park season.

### **Lake McDonald Camp**

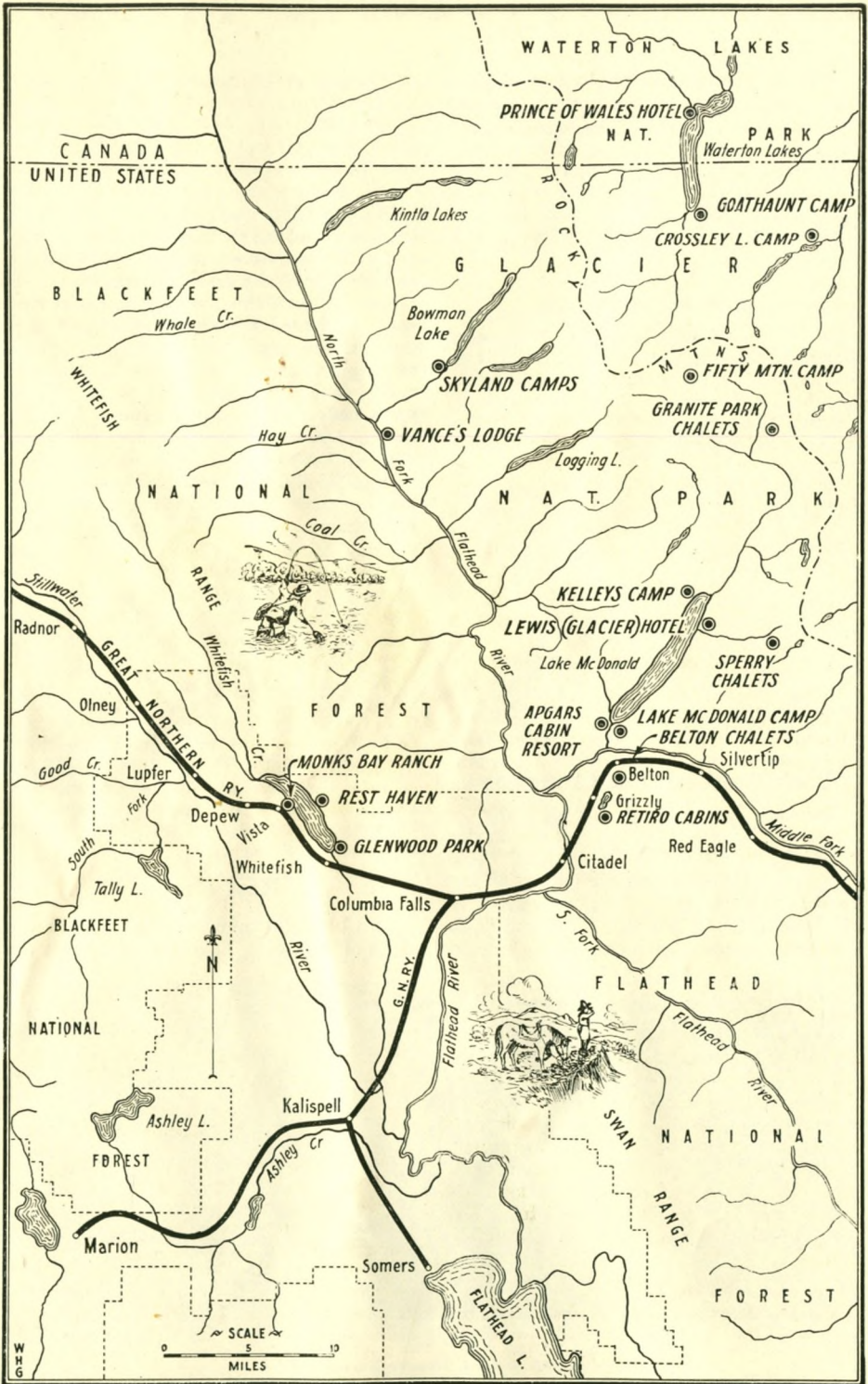
Lake McDonald Camp is on the south shore of that lake in Glacier National Park and is reached by bus from the Great Northern station at Belton, Montana. The camp buildings consist of a central lodge with dining room, nine bed rooms and bath; a club house with large porches facing the lake, a fireplace, hardwood dance floor, curio shop and post office, and 14 cabins rented either for lodging or light housekeeping.

Guests of this camp have access to all Park saddle horse and motor trips, and boat trips on Lake McDonald or down the Flathead River. Fishing for trout is good in the many lakes and streams nearby and the camp is only two miles from the boundary of the Flathead National Forest, one of the last stands of big game in the United States, and accommodations are offered to hunting parties during the months of October, November and December. The regular summer season is from June 15th to September 15th and for further information and reservations, address Gold Brothers, Managers, Lake McDonald Camp, Belton, Montana.

### **Lewis' (Glacier) Hotel**

On the east shore and near the head of Lake McDonald in Glacier National Park, is the Glacier Hotel, a log hotel of pleasing style of rustic architecture, containing a spacious lounging room, open fire in lobby and a large veranda facing the lake. This hotel is equipped with private baths and has additional accommodations in 20 furnished log cabins. It is reached from the Great Northern station at Belton, Montana, either by auto bus direct





Map of West Glacier Country



to the hotel or by auto to the foot of Lake McDonald and then by boat to the hotel dock.

Guests at this hotel have access to trips to all parts of Glacier National Park. Horses and guides are available. Fishing is good in Lake McDonald and the nearby streams. For further information, address the proprietor, Mr. J. E. Lewis, Lake McDonald, Montana.

### Monk's Bay Ranch

In a secluded bay on the east shore of Whitefish Lake and about three miles from the Great Northern station at Whitefish, Montana, is the Monk's Bay Ranch with accommodations at present for about twelve guests, who are housed in a modern frame cottage.

Whitefish Lake is one and half miles wide and about seven miles long and boasts of some excellent fishing for salmon trout and whitefish. The surrounding country is mountainous, with the lower slopes thickly forested and crisscrossed with innumerable trails for the hiker and rider. This camp is open from May 15th until September 1st and guests will be met at Whitefish upon advance notice. The owner, Mr. J. A. Monk, Whitefish, Montana, will gladly furnish further information upon request.

### Park Saddle Horse Company

The Park Saddle Horse Company has the concession for saddle and pack horse service and camp outfits in Glacier National Park. They are equipped to handle parties of any size for trips to any point in or adjacent to Glacier Park, and guides, saddle and pack horses, and camp equipment can be secured

or released at Glacier Park Station, Many Glacier Hotel, Going-to-the-Sun Chalets and Lewis's Hotel on Lake McDonald. Horses and guides only can be secured at Two Medicine Chalets and Lake McDonald Camp.

This company supplies all the horses and guides for side trips from the various hotels and camps in the park and in addition, conducts a five-day circle tour of the Waterton and Crossley Lake section of the Park. In connection with this five-day tour, the company maintains three permanent camps in the northern section of the park. These are tent camps, the guests sleeping in small tent houses, equipped with board floors, comfortable beds and heating stoves. Meals are provided in large mess tents and permanent hosts at these camps are prepared at all times, to receive hikers as well as regular saddle-horse parties. The location of these camps is as follows:

**Fifty Mountain Camp.** Near the top of the Continental Divide, on the slopes of Flattop Mountain, just to the west of Mount Kipp. Reached only by trail from Granite Park, Lake McDonald and Waterton Lake.

**Goathaunt Camp.** Near the upper end of Waterton Lake and at the foot of Goathaunt Mountain. It is reached by horseback from Granite Park and Fifty Mountain Camp or by boat from the Prince of Wales Hotel.

**Crossley Lake Camp.** On the north shore of Crossley Lake in the northeast portion of the Park. It is reached by horseback from Goathaunt Camp or Many Glacier Hotel.

### Rest Haven

This beautiful summer villa is on the east shore of Whitefish Lake between three and



Lake McDonald, Glacier National Park



four miles from Whitefish, Montana, on the Great Northern Railway, and easily reached by either auto or boat. It has 142 acres of ground and takes in over a mile of lake shore. Near the dock is the home of the owner, Sunset Lodge. There is a bearing orchard and a clubhouse for dancing and recreational purposes. At present there are about ten summer homes built and others in the course of construction. These are rented out for light housekeeping and a restaurant is operated in conjunction with the camp.

This camp is open the greater part of the year and besides boating and swimming, there is a tennis court and horses and guides may be obtained for trips into the surrounding mountains. Father Joseph J. Carroll is the owner of this resort and request for reservations, rates and further information should be addressed to him at Rest Haven, Whitefish, Montana.

### Retiro Cabins

Retiro Cabins is a pleasantly situated farm home located on the south shore of Lake Five, about three miles from the Great Northern station at Belton, Montana, at which point guests will be met upon advance notice. The guests are housed in nine furnished log cabins which are rented for light housekeeping, although a few guests can be boarded at the main building.

It is a quiet little camp where the guests are left to themselves to wander along the many trails that run around the lake and to points of interest in the adjacent country and in nearby Glacier National Park. For the disciples of Izaak Walton there is good fishing, both in Lake Five and in the numerous streams that are easily reached from the ranch. Hunting for large and small game is also to be had in season. The resort is open from June 1st to September 15th and further information may be obtained from the proprietor, Mr. J. H. Ridenour, Lake Five, Montana.

### Skyland Camps

This concern maintains a permanent camp on the shores of Bowman Lake in the west side of Glacier National Park, about 40 miles by road from Belton, Montana, on the Great Northern Railway from which point it can be reached by automobile. Temporary camps will be established, upon a week's notice, at Lower or Upper Kintla Lakes when five or more persons desire accommodations. The permanent camp consists of Rainbow Lodge,

a log chalet used for dining and assembly purposes, and a number of smaller log cabins and floored tents for sleeping quarters.

Side trips to Quartz Lake, the famous "Hole-in-the-Wall" country and Kintla Lakes can be made at moderate cost. Excellent saddle horses are available and competent guides will be furnished at authorized rates. Fishing is good in this region. Further information may be obtained by writing to Skyland Camps, suite 2009, 25 East Washington St., Chicago, Ill., before June 1st or Skyland Camps, Belton, Montana, between June 1st and October 15th.

### Vance's Lodge

The Vance Lodge is situated on the North Fork of the Flathead River, the western boundary of Glacier National Park. It is reached by U. S. Mail stage from the Great Northern station at Belton, Montana, every Tuesday and Friday or by hired auto from either Belton or Columbia Falls. Both are very picturesque, driving through a valley with wooded mountains and deep canyons on either side. One gets a splendid view of Lake McDonald and scenic views of the Flathead via Belton; the latter route follows the river closely, giving one a wonderful panorama of Glacier Park's mountain ranges. At the lodge, which is open from June 1st to November 15th, a large log house provides comfortable quarters for ten people.

There are eight lakes besides mountain streams within a radius of fifteen miles of the lodge, these abound in fish and wonderful scenery. They can be reached by horseback, hiking or auto. Fishing can be had one mile from the camp and there is deer, bear and chicken hunting in the fall. Camping parties can be arranged for. Address Mrs. A. G. Vance, Polebridge, Montana, for further information.

### Frank Higgins

Frank Higgins, a guide of twenty-five years' experience in the north Montana Rockies, is prepared to outfit parties with competent guides, horses, tents and all that makes a camp complete for any sort of a trip into the mountains. These trips start from Columbia Falls and can take in Glacier National Park or any of the National Forest areas that adjoin it on the south and west. A country that is noted for its scenery and fishing and, outside of the Park, for its big game hunting. For particulars write to Frank Higgins, Columbia Falls, Mont.



## GENERAL INFORMATION

There are a number of things that the prospective mountain resort patron asks himself, and the first of these is what shall I wear. The National Park Service recommends the following apparel for wear in Glacier National Park and the same should prove suitable for a stay at any of the resorts listed:

### How to Dress

As a rule tourists are inclined to carry too much. A very inexpensive outfit is required, old clothes and stout shoes are the rule. For a week's to two weeks' trip, either afoot or horseback, the following list is about all that is required:

- 1 suit of old clothes or suitable warm outing clothes.
- 1 sweater or mackinaw jacket.
- 2 suits of wool underwear (medium weight).
- 3 pairs of wool socks (heavy).
- 1 pair of stout lace shoes or hunting boots.
- 1 pair of canvas leggings (if shoes are worn).
- 2 pairs of cotton gloves.
- 1 old felt hat.
- 1 rubber blanket or rain coat for hiking. Waterproof slicker for horseback.

"The above, together with toilet articles, will go in a compact bundle and can be put in haversack or bag. Women should have either stout shoes or boots and riding trousers, as greater freedom of movement is permitted."

### State Game Laws

The U. S. Forest Service gives the following information on hunting and fishing in the National Forests:

"Fishing and hunting in the National Forests are regulated by Federal and State laws. The Forest Service makes no charge for hunting, or fishing, or for ordinary camping, within the National Forests. In order, however, legally to hunt, take, or kill game animals, game birds, or game fish in any of the Western States, a license must first be obtained from the game department of the State, or from its local representative. A small fee is charged for this privilege. Licenses may be purchased in all of the towns and cities within the National Forests and at other points along public highways.

"Usually licenses are either general or special. A general license permits the taking of a limited number of game animals, game birds, and game fish during the hunting or fishing season. Special licenses permit the taking of only one kind, such as fish, birds, or animals. It is customary to publish on the back of each license the conditions under which it is issued or its limitations. As a general rule, licenses are also classified into citizen or resident, non-resident, alien, and trapper. The latter authorizes the capture of fur-bearing animals. The fee for a non-resident or an alien license is in some States much greater than for a citizen or resident license.

"Some species of game are protected throughout the year, and a license to hunt or fish does not authorize the capture or killing of the protected kinds. \* \* \*

"Forest officers are required by Federal law to assist in the enforcement of the State game laws. A violation of a State game law within a National Forest is also an offense against the Federal law."

### Fire Prevention

The most important thing in hiking or riding through the forests of the West is the prevention of forest fires and for this purpose the U. S. Forest Service has made six rules which cannot be emphasized too strongly. They are as follows:

1. *Matches.*—Be sure your match is out. Break it in two before you throw it away.

2. *Tobacco.*—Throw pipe ashes and cigar or cigarette stumps in the dust of the road and stamp or pinch out the fire before leaving them. Don't throw them into brush, leaves, or needles.

3. *Making Camp.*—Build a small camp fire. Build it in the open, not against a tree or log or near brush. Scrape away the trash from all around it.

4. *Leaving Camp.*—Never leave a camp fire, even for a short time, without quenching it with water and earth.

5. *Bonfires.*—Never build bonfires in windy weather or where there is the slightest danger of their escaping from control. Don't make them larger than you need.

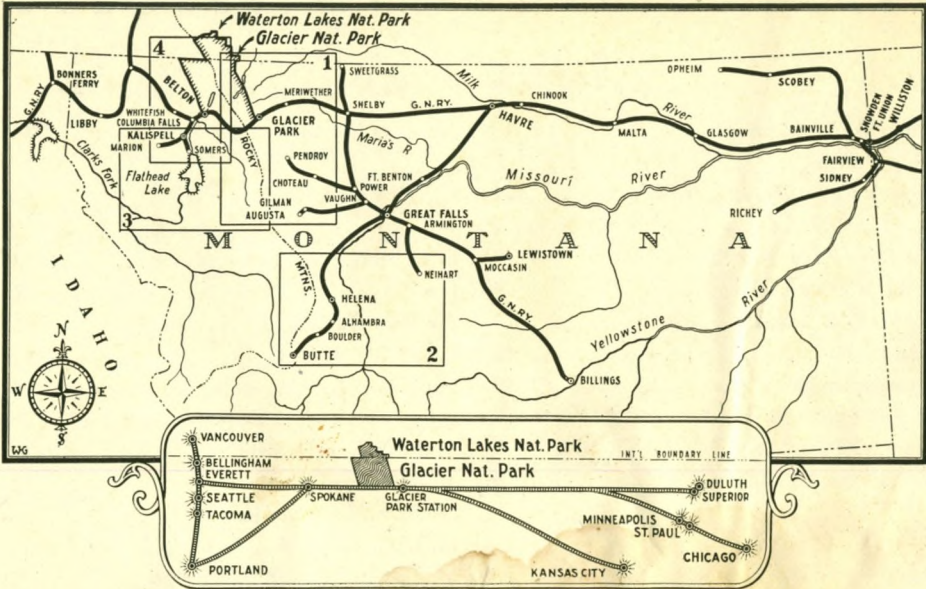
6. *Fighting Fires.*—If you find a fire, try to put it out. If you can't, get word of it to the nearest U. S. forest ranger or State fire warden, at once. Keep in touch with the rangers.



Index to Resorts

Alhambra Hot Springs . . . . .	18	Jennings Ranch . . . . .	12
Allan Ranch . . . . .	8	Kelly's Camp . . . . .	34
Apgar's Cabin Resort . . . . .	34	Lake McDonald Camp . . . . .	34
Bar Lazy D. N. Ranch . . . . .	8	Lewis' (Glacier) Hotel . . . . .	34
Binko Recreation Ranch . . . . .	24	Licensed Guides . . . . .	15
Bosworth's Cabins . . . . .	24	Lone Chief Resort . . . . .	12
Boulder Hot Springs . . . . .	18	Lone Wolf Ranch . . . . .	20
Broadwater Hotel . . . . .	18	Many-Glacier Chalets . . . . .	12
Broken Arrow Ranch . . . . .	8	Many-Glacier Hotel . . . . .	12
Bruckert Ranch . . . . .	9	Meadow Mountain Ranch . . . . .	30
Buffalo Head Ranch . . . . .	9	M. Lazy V. Ranch . . . . .	30
Camas Hot Springs . . . . .	24	Monk's Bay Ranch . . . . .	36
Camp Flathead . . . . .	25	Mountain View Ranch Camp . . . . .	14
Camp Lincoln . . . . .	20	Mrs. Bond's Bungalows . . . . .	30
Camp Tuffit . . . . .	25	Murphy's Camp . . . . .	30
Captain Laird's Recreation Lodge . . . . .	25	Olney's Ranch . . . . .	14
Cedar Island Resort . . . . .	27	Park Saddle Horse Company . . . . .	36
Chick Grimsley Camp . . . . .	9	Prince of Wales Hotel . . . . .	12
Crossley Lake Camp . . . . .	36	Rabichaud Hotel . . . . .	21
Curley Dunlap's Dude Ranch . . . . .	20	Rest Haven . . . . .	36
Cut Bank Chalets . . . . .	12	Retiro Cabins . . . . .	37
Dew Drop Inn . . . . .	27	Rock Hill Ranch . . . . .	21
Fifty Mountain Camp . . . . .	36	Rock Spring Ranch . . . . .	14
Forest Meadows . . . . .	27	Rocky Bar O Ranch . . . . .	30
Foster Ranch . . . . .	11	St. Marys Chalets . . . . .	12
Glacier Park Hotel . . . . .	12	Shining Mountain Camp . . . . .	31
Glacier Park Hotel Company . . . . .	11	Skyland Camps . . . . .	37
Glenwood Park . . . . .	34	Sperry Chalets . . . . .	12
Gothaunt Camp . . . . .	36	Spotted Bear Lodge . . . . .	31
Going-to-the-Sun Chalets . . . . .	12	Stecker Ranch . . . . .	14
Granite Park Chalets . . . . .	12	Tee Bar Ranch . . . . .	31
Happy's Inn . . . . .	28	Two Medicine Chalets . . . . .	12
Hiawatha Lodge . . . . .	28	Two Medicine Ranch . . . . .	15
Hideaway Lodge . . . . .	28	Vance's Lodge . . . . .	37
Higgins, Frank . . . . .	37		
Holland Lake Lodge . . . . .	28		
Hughes and Connors . . . . .	15		





## Great Northern Travel Headquarters

that exist for your convenience. Each one is in charge of a travel specialist and a force of competent ticket men who will be glad to show you how to get to whatever resort you select in the quickest and most comfortable manner. Avail yourself of their service. They are anxious to serve you.

- |   |  |   |
|---|--|---|
| Bellingham, Wash.<br>212 Kulshan Bldg.                      | Great Falls, Mont.<br>802 First National Bank Bldg.        | St. Louis, Mo.<br>517 Boatmen's Bank Bldg.                  |
| Billings, Mont.<br>311 Electric Bldg.                       | Helena, Mont.<br>510 Power Bldg. and<br>Placer Hotel Bldg. | St. Paul, Minn.<br>4th and Jackson Sts.                     |
| Boston, Mass.<br>Shop 3, Little Bldg.<br>80 Boylston St.    | Kansas City, Mo.<br>516 Railway Exchange Bldg.             | San Francisco, Cal.<br>1009 Hearst Bldg.                    |
| Buffalo, N. Y.<br>683 Ellicott Square                       | Lewistown, Mont.<br>Great Northern Station                 | Seattle, Wash.<br>1403 4th Ave. and<br>407 Douglas Bldg.    |
| Butte, Mont.<br>513 Metals Bank Bldg.                       | Los Angeles, Cal.<br>605 Central Bldg.                     | Sioux City, Iowa<br>516 Nebraska St.                        |
| Chicago, Ill.<br>113 South Clark St.                        | Milwaukee, Wis.<br>812 Majestic Bldg.                      | Sioux Falls, S. D.<br>504 East 8th St.                      |
| Cincinnati, Ohio<br>609 Traction Bldg.                      | Minneapolis, Minn.<br>524 2nd Ave. So.                     | Spokane, Wash.<br>Davenport, Hotel                          |
| Cleveland, Ohio<br>508 Hippodrome Bldg.                     | Minot, N. D.<br>Great Northern Station                     | Superior, Wis.<br>1227 Tower Ave.                           |
| Dallas, Tex.<br>1013 Southwestern Life Bldg.                | Nelson, B. C.<br>421 Baker St.                             | Tacoma, Wash.<br>116 So. Ninth St.                          |
| Des Moines, Iowa<br>305 Equitable Bldg.                     | New York, N. Y.<br>595 Fifth Avenue at 48th St.            | Toronto, Ont.<br>202 Webster Bldg.                          |
| Detroit, Mich.<br>Main Floor Lobby,<br>Transportation Bldg. | Omaha, Neb.<br>308 Paxton Block                            | Vancouver, B. C.<br>607 Hastings St.                        |
| Duluth, Minn.<br>422 West Superior St.                      | Philadelphia, Pa.<br>504 Finance Bldg.                     | Vancouver, Wash.<br>Great Northern Station.                 |
| Everett, Wash.<br>Great Northern Station                    | Pittsburgh, Pa.<br>206 Oliver Bldg.                        | Victoria, B. C.<br>916 Government St.                       |
| Fargo, N. D.<br>603 First National Bank Bldg.               | Portland, Ore.<br>201 Morgan Bldg.                         | Wenatchee, Wash.<br>203 Wenatchee Savings and Loan<br>Bank. |
| Grand Forks, N. D.<br>Great Northern Station                |  | Winnipeg, Man.<br>226 Portage Ave.                          |

C. W. Meldrum, Asst. Gen. Pass. Agent, Seattle, Wash.  
 J. F. Pewters, Asst. Gen. Pass. and Frt. Agent, Helena, Mont.  
 W. A. Wilson, Asst. Gen. Pass. Agent, St. Paul, Minn.  
 F. T. Holmes, Asst. Gen. Pass. Agent, St. Paul, Minn.  
 E. H. Wilde, General Passenger Agent, St. Paul, Minn.  
 A. J. Dickinson, Passenger Traffic Manager, St. Paul, Minn.



